

- Prior to 1859** Postal Service in the locality then known as the Moreton Bay District administered by New South Wales.
- 1859** Moreton Bay District separated from New South Wales as the Colony of Queensland on 10 December 1859.
- 1860** The first stamps printed from steel plates engraved by Perkins Bacon in London. Steel plates were then delivered to the Colony for further printings.
- 1866** First Lithograph plates for the 4d. and 5s. made by taking lithographic transfers from Perkins Bacon steel plates.
- 1876** General decision that Queensland should produce its own stamps. Electrotypes came into use for printing from 1879.
- 1880** Authorisation of Fiscal Stamps for Postal use.
- 1903** Printing from lithographic stones from transfers taken from recess plates.



View of Moreton Bay ca. 1855

1860, Imperforated



6142



6143

| | | Gibbons | Start price in CHF | Start price approx. € |
|------|--|---------|-----------------------|--------------------------|
| 6142 | 1 d. carmine-rose, wmk. Large Star, imperforate, a superb used example with enormous margins all round, particularly at left, lightly cancelled in black. A superb example of this rare stamp Gi = £ 800. | 1 | 400 | (€ 355) |
| 6143 | 1 d. carmine-rose, wmk. Large Star, imperforate, a fine used horizontal pair, of excellent rich colour, large margins all round and lightly cancelled in black. A choice and exceptional multiple. Cert. BPA (1974) Gi = £ 1'600+. | 1 | 750 | (€ 670) |



6144



Queen Victoria

| | | | | | |
|------|--|-------------|-----|-------|-----------|
| 6144 | Perkins Bacon original Die Proof of the 2 d. value, engraved and affixed to die sunk card, 52 x 57 mm., fresh and very fine, a beautiful example of the engraver's art. Superb. <i>Provenance: Spink, London, 9 Nov 2006, lot 2050.</i> | 2 Die Proof | (*) | 5'000 | (€ 4'450) |
|------|--|-------------|-----|-------|-----------|



6145



View of Brisbane ca. 1860

- | | | | | | |
|-------------|--|---------|------|-----------------------|--------------------------|
| | | Gibbons | | Start price in CHF | Start price approx. € |
| 6145 | Perkins Bacon Plate Proof of the 2 d. value, engraved in black on thick paper, a superb block of four from left of sheet. Some light aging but a most attractive multiple. | 2 Proof | 田(*) | 150 | (€ 135) |



6146

- | | | | | | |
|-------------|--|---|--|------------|---------|
| 6146 | 2 d. blue, wmk. Large Star, imperforate, a superb used example with ample margin at right and large on the other three sides, of excellent vibrant colour, neatly cancelled by Q.L. obliterator in black. A delightful stamp Gi = £ 1'800. | 2 | | 750 | (€ 670) |
|-------------|--|---|--|------------|---------|



6147



6148

- | | | | | | |
|-------------|---|---|---|--------------|---------|
| 6147 | 6 d. green, wmk. Large Star, imperforate, a superb used example in a rich shade, clear to large margins all round and sheet marginal at left, used on small piece tied by fine strike of "Brisbane / Queensland / QL" duplex (Nov 4, 1860) in black. Delightful and rare. Signed Holcombe. Cert. Ferchenbauer (1987) Gi = £ 800. <i>Provenance: Collection Alfred Clayton, Harmers, London, 14-15 Dec 1959, lot 893.</i> | 3 | △ | 400 | (€ 355) |
| 6148 | 6 d. green, wmk. Large Star, imperforate, a superb used horizontal pair, huge margins on all sides and portion of adjoining stamp at left, of excellent colour, lightly cancelled in black. A rare and most attractive multiple in the foremost quality Gi = £ 1'600+. | 3 | | 1'000 | (€ 890) |

1860, Clean-cut perf 14-16, Watermark Large Star



6150



Queen Street in Brisbane ca. 1860



6149

- 6149** 2 d. blue, wmk. Large Star, clean cut perf. 14-16, a fine used example on 1860 cover to the Colonial Treasurer in Brisbane, lightly tied in black with 'Gayndah' cds of despatch at left (Nov 4) and reverse with Brisbane arrival (Nov 9). A fresh and fine cover.
- 6150** 6 d. green, wmk. Large Star, clean cut perf. 14-16, a fine example in a deep shade, used on cover to Birmingham, England tied by oval obliterator in black. Reverse with 'Brisbane / Queensland' cds (April 19) and Birmingham arrival (June 16), both in black. A charming and scarce cover.

| Gibbons | | Start price in CHF | Start price approx. € |
|---------|---|-----------------------|--------------------------|
| 5 | ✉ | 200 | (€ 180) |
| 6 | ✉ | 250 | (€ 225) |

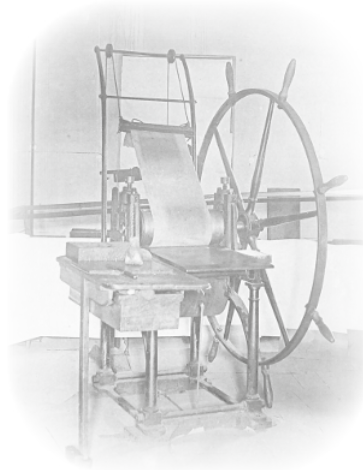
1860/61, Clean-cut perf 14-16, Watermark Small Star



6151

- 6151** Perkins Bacon Die Proof in the completed state, imperforate in black on India paper, tiny nick in margin at top of no significance as the Proof has huge margins all round and is in superb quality. A great rarity and a fantastic example of the printer's art.
Provenance: Spink, London, 22 Sept 2004, lot 1149.

| | | | |
|----------|-----|-------|-----------|
| 10 Proof | (*) | 1'500 | (€ 1'335) |
|----------|-----|-------|-----------|



The printing press supplied by Perkins Bacon



6152



Gibbons

Start price
in CHF Start price
approx. €

- 6152** 1 d. carmine-rose, wmk. Small Star, clean-cut perf. 14 at Somerset House, the remarkable re-joined vertical pair sharing bold strike of the Perkins Bacon "CANCELLED" obliterator in black, applied by favour of Perkins Bacon upon the request, in April 1861 by Ormond Hill who required copies of stamps, other than those of Great Britain for his collection. Perkins Bacon sent, in September 1861, six examples of each stamp held in stock, to Mr. Pearson Hill and asked him to forward four of the examples to Ormond Hill. The resulting fracas led to the termination of some of Perkins Bacon's Colonial contracts. A wonderful and choice pair, the upper stamp with tiny manuscript stain on top stamp, lower stamp with somewhat clipped perfs. but showing the Plate error, position 72 on the sheet, with "N" and "S" of QUEENSLAND joined. Exceptional and of great rarity for the advanced Exhibitor and philatelic connoisseur Gi = £ 19'000.

Provenance: Collection E. H. Collins, 1928.

Collection Tommy Allen.

Collection General Robert Gill, Baltimore, 1957.

Collection John Gartner, Melbourne, 1978.

Collection Noel Turner, 1989.

12

7'500 (€ 6'675)



6154



6153



6155

- 6153** 1 d. carmine-rose, wmk. Small Star, rough perf. 14-16, an unused horizontal pair, corner marginal from lower left of the sheet of 240 subjects, of good colour and showing the marginal lined watermark. Margins creased but an attractive multiple Gi = £ 200+.
- 6154** 1 d. carmine-rose, wmk. Small Star, rough perf. 14-16 (perf. 15 x 15), an unused horizontal pair, well centred and of good colour, watermark showing through (should be mounted on white card), slightly aged at top, large part og. Gi = £ 200+.
- 6155** 1 d. blue, wmk. Small Star, rough perf. 14-16, an unused example of gorgeous aspect (American philatelists would term this a 'jumbo' example), fresh and fine without gum Gi = £ 300.

| Gibbons | | Start price in CHF | Start price approx. € |
|---------|-----|-----------------------|--------------------------|
| 14 | (*) | 100 | (€ 90) |
| 14 | * | 100 | (€ 90) |
| 15 | (*) | 200 | (€ 180) |



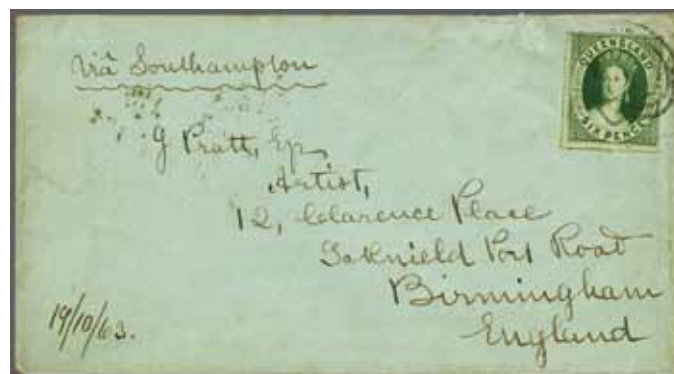
6156



6157

- 6156** 3 d. brown, wmk. Small Star, rough perf. 14-16, an unused block of eight (4 x 2) of excellent colour, marginal from left of sheet with POST of POSTAGE in watermark, fresh and fine with large part og. and lower four stamps unmounted og. A scarce and most attractive multiple Gi = £ 680+.
- 6157** 3 d. brown, wmk. Small Star, rough perf. 14-16, an unused block of six (3 x 2) of excellent colour, marginal from left of sheet with lined watermark, second stamp with small closed tear at top, fine appearance, large part og. Gi = £ 500+.

| | | | |
|----|-------|------------|---------|
| 16 | 田*/** | 250 | (€ 225) |
| 16 | 田* | 100 | (€ 90) |



6158

- 6158** 6 d. deep green, wmk. Small Star, rough perf. 14-16, a fine used example on 1863 cover to Birmingham, England tied by oval obliteration in black. Reverse with Brisbane despatch cds (Oct 19) and Birmingham arrival cds (Dec 18) in black. The envelope with slight faults and soiled but scarce.

| | | | |
|----|---|------------|---------|
| 17 | ✉ | 150 | (€ 135) |
|----|---|------------|---------|

1862/67, No Watermark, printed by Thomas Ham



6159

Gibbons

Start price
in CHFStart price
approx. €

- 6159** Locally printed Plate Proofs imperforate on unwatermarked white wove paper, 2 d, in deep blue, 2 d. horizontal pair in ultramarine (with crayon defacement) and a 1 s. value struck in violet, marginal from left of sheet. Small faults but an attractive group.

21+ 23+ 29
Proofs

*

200

(€ 180)



6160



6162

- 6160** 1 d. Indian-red, no wmk., rough perf. 13, a horizontal pair of deep colour, used on 1863 cover to the Sheriff's Office in Brisbane, each stamp tied by "96" numeral obliterator with 'Maryborough / Queensland' despatch cds at left (Jan 29) in black. Brisbane arrival cds on reverse of an attractive cover.

21

**200**

(€ 180)



Thomas Ham
(1821-1870)



6161

- 6161** 1 d. orange-vermilion, no wmk., rough perf. 13, a fine unused block of sixteen (4 x 4), of superb colour, fifteenth stamp with thin and some minor creasing as usual, fresh and fine, large part og. with many unmounted og. A scarce multiple Gi = £ 1'750+.

Provenance: The 'Mayfair Find', Harmers, London, 9 Nov 1925 ex lot 67 or 68.

22

**500**

(€ 445)

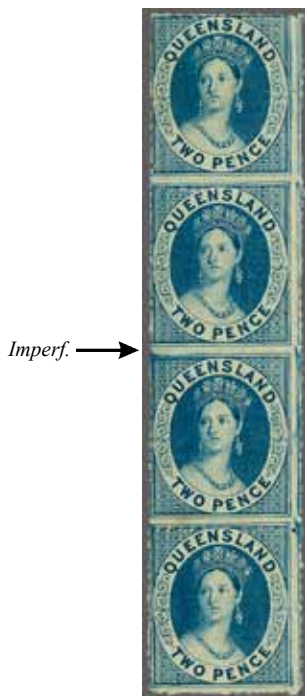
- 6162** 2 d. blue, no wmk., rough perf. 13, three examples used on 1863 cover endorsed 'via Southampton' to London, all lightly cancelled by 'Gayndah / Queensland' despatch cds's (Jan 2, 1864, erroneously dated 63), and by London arrival cds in red. Reverse with 'Brisbane / Queensland' transit cds (Jan 8, 1864) in black and obverse endorsed 'Rec'd 17 March, 64'. Some imperfections but an attractive cover.

Provenance: Collection P. Wise, March 1948.

24

**200**

(€ 180)



6163



6164

Gibbons

Start price
in CHF Start price
approx. €

- 6163** 2 d. blue, no wmk., rough perf. 13, a vertical strip of four unused, central stamps with variety "Imperforate Between Horizontally", of outstanding fresh colour except for one minor age spot between third and fourth stamp, otherwise near 'Post Office' fresh with full original gum. A magnificent, extremely fine and rare multiple Gi = £ 5'000+.
Provenance: From the 'Mayfair Find', Harmers, London, 9 Nov 1925, lot 69. The Find included a part sheet of 106 stamps with two rows imperforate between horizontally, although the photograph in the original catalogue clearly shows one imperforate row, the second such is not at all clear. This strip is certainly from the find due to its overall freshness and quality and a copy of its position on the Mayfair block of 106 stamps is attached.

24c ** **2'000** (€ 4'450)

- 6164** 6 d. apple-green, no wmk., rough perf. 13, a magnificent unused block of fifteen from lower right corner of the sheet, aged in right margin and corner stamp with small mark, otherwise of lovely fresh colour, minor gum bend unapparent on face, superb og. with nine stamps unmounted og. A lovely block Gi = £ 2'700.
Provenance: The 'Mayfair Find', Harmers, London 9 Nov 1925, lot 72.

26 田*/** **1'500** (€ 1'335)



6165



Panorama from Brisbane

- 6165** 6 d. bright yellow-green, no wmk., rough perf. 13, a fine used block of four tied to refolded 1863 cover to Sydney by four strikes of the 'Q.L.' obliterator in black, some aging around the perfs., reverse with 'Brisbane / Queensland' despatch cds (Sept 26) and SHIP-LETTER / SYDNEY arrival cds (Sept 30) in black. A rare franking at quadruple rate that displays well.

27 田 **400** (€ 355)



6166

Gibbons

Start price
in CHFStart price
approx. €

- 6166** 1 s. grey, no wmk., rough perf. 13, a fine unused example of good colour, without gum, together with a further example with diagonal SPECIMEN overprint struck in blue, large part og. Scarce pair Gi = £ 400.

29+ 29 spec

*

150

(€ 135)



6167

- 6167** 1 s. grey, no wmk., rough perf. 13, a magnificent lightly cancelled used horizontal pair, variety **"Imperforate Between Vertically"** with good outer perforations all round. A remarkable and extremely rare variety, the sole example mentioned in A. F. Basset Hull (RPSL, London, 1930) on page 101. A great rarity of Queensland philately Gi = £ 17'000.

Provenance: Collection J. H. Chapman.

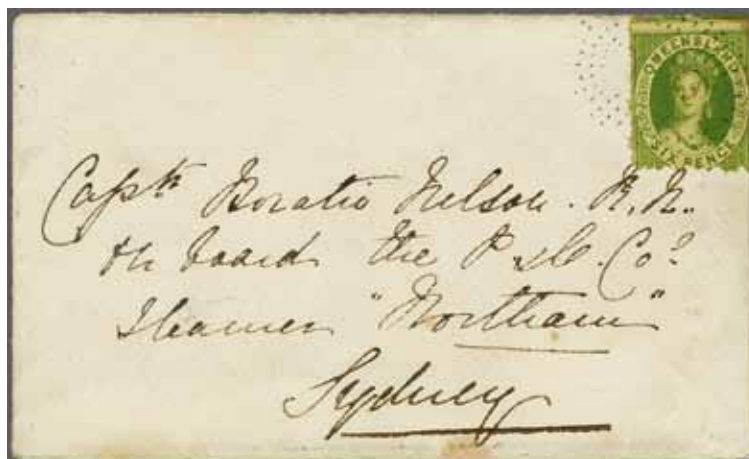
Collection Ernest B. Lye.

Collection Leslie Digby Nelson, Grosvenor, London, 4 Oct 2012, lot 18.

29a

7'500

(€ 6'675)



6168



P&O Steamer 'Northam'

- 6168** 6 d. yellow-green, no wmk., rough perf. 12½ x 13, a fine used example on 1865 cover to Sydney cancelled in black, interestingly addressed to: "Captain Horatio Nelson RN., on board the P&O Co. Steamer 'Northam', Sydney". Reverse with single ring SHIP LETTER / QUEENSLAND cds (June 18) and SHIP-LETTER / SYDNEY arrival cds (June 21).

34

**75**

(€ 65)

1864/96, Watermark Small Star, printed by Thomas Ham



6169

Gibbons

| | |
|-------------|-------------|
| Start price | Start price |
| in CHF | approx. € |

- 6169** 2 d. blue, wmk. Small Star, perf. 13, a fine used horizontal strip of three, left hand pair showing the variety: **"Imperforate Between Vertically"**, with a double line of horizontal perforations at top. Lightly cancelled and nigh on faultless but for slight crease of no importance on third stamp. Basset Hull records, on page 106 of 'The Postage Stamps of Queensland', *"a horizontal strip of three of the 2 d. blue with rough perforation 13 has been seen with double perforation at top, the two stamps on the right being the variety imperforate between"*. This is the same strip erroneously described in Basset Hull. Extremely rare, just one other pair exists of this variety, a major rarity of both of Australian and Queensland classic philately Gi = £ 13'000.

Provenance: Collection J.H. Chapman, mentioned in Basset Hull, page 106.

Collection Ernest B. Lye.

Collection Leslie Digby Nelson, Grosvenor, London, 4 Oct 2012, lot 27.

46b

5'000 (€ 4'450)



ex 6170

- 6170** 1895: Reprints of the Chalon Head issue, all in horizontal marginal strips of ten stamps perf. 12 or 13 on watermarked paper, with REGISTERED 6 d. yellow, 1 d. orange-vermilion, 2 d. deep dull blue Plate II, 3 d. brown, 6 d. in yellow green and 1 s. in violet; the 2 d. strip imperforate at top and with 'Imperforate Between Vertically' error between the fourth and fifth stamp. A charming and rare set.

49+ 59+

61+ 67+

68+ 73

Reprints

*

750 (€ 670)



6171

- 6171** 1 d. orange-vermilion, no wmk., perf. 12½ x 13, an unused block of four, of good colour and typically erratic perforations, fresh and very fine, large part og. An extremely rare stamp in a multiple. Signed A. Diena Gi = £ 640+.

50

田*

200 (€ 180)

1866 (Jan.), Watermark QUEENSLAND / POSTAGE - POSTAGE / STAMPS - STAMPS



6172

Gibbons

Start price
in CHFStart price
approx. €

- 6172** 2 d. blue, perf. 13, a fine used block of four of good colour, lightly cancelled by 'QL' obliterations in black.

52

田

100

(€ 90)

1866/67, Lithographed, No Watermarks



6173



6174

- 6173** 4 d. grey-lilac and 4 d. reddish lilac, First Transfer, no wmk., perf. 13, fine unused examples, the 4 d. reddish lilac with part sheet margin at right, each with minor age spot on large part og. Rare stamps Gi = £ 850.
- 6174** 5 s. pale rose, Second Transfer, no wmk., perf. 13, a fine unused block of four of excellent depth of colour, each stamp overprinted SPECIMEN diagonally in blue. Fresh and very fine, large part og.

53+ 54

*

200

(€ 180)

58 spec

田*

150

(€ 135)

1868/74, Watermark Small Truncated Star



6175



6176

- 6175** 1 d. orange-vermilion, wmk. Small truncated Star, perf. 13, an unused block of four, each stamp diagonally overprinted SPECIMEN in blue, fresh and fine, large part og.
- 6176** 2 d. pale blue, wmk. Small truncated Star, Plate I, perf. 13, an unused block of four, each stamp diagonally overprinted SPECIMEN in black, fresh and fine, large part og. Scarce and most attractive block.

59 spec

田*

150

(€ 135)

60 spec

田*

150

(€ 135)



6177

6177 2 d. full blue, wmk.Small truncated Star, Plate I, perf. 13, an unused block of forty (10 x 4), marginal from the top right hand corner of the sheet, showing full watermark QUEENSLAND, of outstanding colour, fresh and very attractive, some perf. reinforcement commensurate with a block this size, large part og. with a few unmounted og. A lovely multiple Gi = £ 3'000+.

Gibbons

Start price in CHF Start price approx. €

62 田*/** 1'000 (€ 890)



6178

6178 2 d. bright blue, wmk. Small truncated Star, Plate I, perf. 13, an unused block of six (2 x 3) of brilliant colour, fresh and fine, large part og. with some reinforcement. A scarce stamp in a multiple. Cert. RPS (1947) Gi = £ 500+.

6179 6 d. green, wmk. Small truncated Star, perf. 13, an unused horizontal pair, of excellent fresh colour, usual slightly irregular perfs. but fresh and very fine, large part og., matched with a horizontal pair of 6 d. yellow-green, each stamp diagonally overprinted SPECIMEN in black. Scarce Gi = £ 450+.



6179

62 田* 200 (€ 180)

69+ 68 spec * 150 (€ 135)

1868/78, Watermark Crown and Q



6180

Gibbons

Start price
in CHF Start price
approx. €

- 6180** 6 d. pale apple-green, wmk. Crown over Q, perf. 13, a fine unused strip of five marginal from top left corner of the sheet, variety "Imperforate", of clear to large margins all round, fine colour, slight ironed corner bend not detracting from appearance, unused without gum. Rare and most attractive multiple Gi = £ 1'400+.

92a (*) **400** (€ 355)



6181



6182

- 6181** 1 d. pale orange-vermilion, wmk. Crown over Q, perf. 12, an unused block of four in a dry shade, fresh and fine, large part og. Scarce Gi = £ 340+.
- 6182** 4 d. buff-yellow, wmk. Crown over Q, Second Transfer, perf. 12, a fine used block of six of good colour for this stamp, cancelled by "214" numeral obliterations of Toowoomba. A fine and extremely scarce multiple Gi = £ 270+.

95 田* **120** (€ 105)

103 田 **150** (€ 135)



6183

- 6183** 6 d. yellow-green, wmk. Crown over Q, perf. 12, an unused block of twelve (4 x 3), of brilliant vibrant colour, fresh and very fine, large part or unmounted og. A lovely block Gi = £ 3'000+.

106 田*/** **1'000** (€ 890)



Brisbane General Post Office on Queen Street



6184



6185



6186

Gibbons

| Start price in CHF | Start price approx. € |
|-----------------------|--------------------------|
|-----------------------|--------------------------|

- 6184** 4 d. yellow, wmk. Crown over Q, perf. 12 x 13 x 13 x 13, a fine used example with this scarce perforation, neatly cancelled by "33" numeral obliterator of Mackay Gi = £ 375.
Provenance: Collection Leslie Digby Nelson, Grosvenor, London, 4 Oct 2012, lot 76.

112

120 (€ 105)

- 6185** 2 d. blue, wmk. Crown over Q, Plate I, perf. 12½, x 13, a superb used example of excellent colour, neatly cancelled by 'Ipswich' datestamp (April 9, 1870) in black. A delightful example of a scarce stamp Gi = £ 350.

Provenance: Collection Leslie Digby Nelson, Grosvenor, London, 4 Oct 2012, lot 80.

115

150 (€ 135)

- 6186** 2 d. blue, wmk. Crown over Q, Plate II, perf. 12½, a fine used horizontal pair, of excellent appearance, good colour, very lightly cancelled in black. Charming and scarce Gi = £ 2'000.
Provenance: Collection Leslie Digby Nelson, Grosvenor, London, 4 Oct 2012, lot 85.

115b

500 (€ 445)

6187

- 6187** 2 d. blue, wmk. Crown over Q, Plate I, perf. 12½, a fine used horizontal strip of four, of excellent colour and centering, lightly cancelled in black. A great rarity (probably the largest known used multiple) and absolutely superb. Cert. BPA (1989) Gi = £ 4'000+.

115b

1'500 (€ 1'335)

1880, Lithographed



6188



6189

- 6188** 2 s. blue, wmk. Crown over Q, a fine imperforate horizontal pair, of rich colour and large margins all round, left hand stamp with manuscript 'tick' in ink, otherwise superb unused without gum. Most attractive and scarce.

119 var

(*)

150 (€ 135)

- 6189** 2 s. 6 d. dull scarlet, wmk. Crown over Q, perf. 12, an unused block of four of lovely colour, fresh and fine, large part og. A scarce multiple Gi = £ 1'300+.

121

田*

350 (€ 310)



6190



Kangaroo Stalking

Gibbons

Start price
in CHFStart price
approx. €

- 6190** 20 s. rose, wmk. Crown over Q, perf. 12, an unused horizontal pair, marginal from top of sheet, well centred and of good colour for this stamp, very fine og. A superb and very rare pair Gi = £ 3'600+.

127

*

1'000

(€ 890)



6191

- 6191** 20 s. rose, wmk. Crown over Q, perf. 12, a delightful horizontal strip of five showing all Types of the Lithographic Transfer, neatly cancelled by "QL" obliterations in black. A dramatic and extremely rare multiple in lovely condition Gi = £ 1'250+.
Provenance: Collection Leslie Digby Nelson, Grosvenor, London, 4 Oct 2012, lot 95.

127

500

(€ 445)

1879/81, Sideface Issue



6192



6194



6193

- 6192** Plate Proof for the 1 d. value struck in blue (as utilised for the issued 2 d.), a horizontal pair on thick card paper, Die II and showing left hand Proof with QUEENSLAND error (position 48) in pair with normal. Slight stain but very scarce.
- 6193** 1879: Essay by William Bell for the proposed ½ d. adhesive, imperforate se-tenant pair showing left hand example with white vignette and right hand example without, each with reversed "Q" in "Queensland", in orange-red on thick card paper with slight defacement line in manuscript at top. Diagonal bend not apparent on face, a scarce Essay.
- 6194** 1 s. pale lilac, wmk. Crown and Q (Type 6), an unused block of four of good colour, some hinge reinforcement otherwise fresh and fine, with part og. A scarce multiple Gi = £ 640+.

129 var

(*)

200

(€ 180)

Essay

(*)

200

(€ 180)

145

田*

180

(€ 160)

1882/95, High Values



6195

Gibbons

| | |
|-------------|-------------|
| Start price | Start price |
| in CHF | approx. € |

- 6195** Bradbury Wilkinson / Queensland Govt. Printer's Trials, for the 2 s., 5 s. and 10 s. values in issued colours, all on Crown on Q watermarked paper, the 2 s. bright blue in an Imperforate pair (positions 21-22) with close or huge margins; the 5 s. rose in a perforated pair (positions 27-28), marginal from base of sheet with 'Bradbury Wilkinson' imprint at base on gummed paper; the 10 s. brown in an Imperforate pair (positions 27-28), marginal from base of sheet with 'Bradbury Wilkinson' imprint at base on gummed paper; all are overprinted SPECIMEN horizontally in orange-red ink. Faults but a splendid and rare group: the engraver's imprint was removed from the Plates prior to issue.

Provenance: The 5 s. and 10 s. pairs are those illustrated on Plate XXVIII in Basset Hull.

152+ 154+

155 Proofs

/()

500

(€ 445)



6196

- 6196** Bradbury Wilkinson £ 1 value, Imperforate on wove paper, printed in an unused / unissued claret colour, perforated SPECIMEN. Scarce and most appealing, these Proofs were found in Bradbury Wilkinson Salesman's Sample Books. Scarce and fine.

156 Proof

(*)

150

(€ 135)

1882/1908, Sideface Issue



ex 6197



Queen Victoria

- 6197** 1882: Die Proofs (5) for the 2 d. value, without the frame around the stamp area, 60 x 60 mm., on cream wove paper without watermark, printed in brown, violet, orange-brown, green and the accepted blue. Some staining but a very rare group.

168 Proof

(*)

750

(€ 670)



View of Rockingham Bay, Queensland



6198



6199

| | | Gibbons | | Start price in CHF | Start price approx. € |
|------|---|-----------|-----|-----------------------|--------------------------|
| 6198 | Die Proof for 2 d. value with frame around the design, printed in mauve (colour selected for the 1 s. value) on unwatermarked cream wove paper, 110 x 78 mm., annotated in manuscript "Engravers Proof 6" at lower left, some minor spotting but extremely rare. | 168 Proof | (*) | 500 | (€ 445) |
| 6199 | Die Proof for the 2 d. value in the issued colour, Imperforate and engraved, applied to part of letter explaining the stamp, with manuscript notations "or space for perforations....the new Die" alongside, presumably from the designer or printer. Unusual working project for this issue. | 168 Proof | (*) | 200 | (€ 180) |



6200



6201

| | | | | | |
|------|---|-----------|----|-----|---------|
| 6200 | Third Sideface Issue 1887/89: Perforated Colour Trial for the 2 s. value on watermarked, perforated and gummed paper, printed in grey in a top marginal block of four. Some minor tone spots, largely unapparent on face, large part og. Scarce. | 181 Proof | 田* | 200 | (€ 180) |
| 6201 | Perforated Colour Trial for the 2 s. value on watermarked, perforated and gummed paper, printed in deep brown-purple in a top marginal block of four, large part og. Scarce. | 181 Proof | 田* | 250 | (€ 225) |



6202



6204



6205

Gibbons

Start price
in CHF Start price
approx. €

- 6202** 1/2 d. deep green, 2 1/2 d. carmine and 3 d. brown, wmk. Crown over Q, perf. 12 1/2, all applied to small piece and handstamped 'SPECIMEN.' in violet by the Natal Post Office (Samuel type NA2) upon receipt from the UPU. A few minor age spots but a rare and unique group. 185s+ 191s+ 192s

△

120 (€ 105)

6203



Brisbane Post Office
with Double Decker Horse Drawn Bus

- 6203** **Fourth Sideface Issue** 1890: 1 d. vermilion-red, a fine imperforate pair used on 1893 cover to Brisbane, cancelled by "472" numeral obliterator with corresponding 'Woolloongabba' despatch datestamp at left (June 24). Minor envelope imperfections but a scarce usage of the variety on letter Gi = £325 off cover.
- 6204** Essay for the 2 1/2 d. value, Imperforate with the 2 1/2 d. value tablet in the top corners, printed in deep blue on white watermarked 'Queensland' paper. Rare and very attractive.
- 6205** 1 d. vermilion-red, no wmk. with burelé in blue, a fine unused strip of three, central stamp (position 2 on sheet) showing the variety "PE" of PENCE missing. Unapparent diagonal bend but fresh and fine, large part og. Scarce and appealing multiple, the fault was later corrected Gi = £ 300+.

187a

**200** (€ 180)

191 Essay

**250** (€ 225)

206b

**120** (€ 105)

6206

- 6206** **Fifth Sideface Issue with White Background** 1895/96: Proofs (2) for the 2 1/2 d. value, Imperforate in violet on unwatermarked blue granite safety paper, a fine block of four, marginal from left of sheet, and another block printed in brown on the same blue paper. Scarce..

213 Proofs

**200** (€ 180)



ex 6207



6208



6209

Gibbons

Start price
in CHFStart price
approx. €

6207 **Seventh Sideface Issue with Value in All Four Corners** 1897/1908: Part set of seven values with 1 d., 2 d., 2½ d. purple on blued, 3 d., 6 d. with corner perf. fault, 1 s. and 2 s., each overprinted SPECIMEN in black or red in sans serif lettering. Fresh and generally fine, a scarce set.

233-254
spec

*

150

(€ 135)

6208 Colour Trial for the 4 d. value, Die II, printed in black on watermarked wove paper, perforated 13 and scored through in red to prevent re-use, fresh and fine, large part og. Rare.

244a Proof

*

150

(€ 135)

6209 ½ d. deep green and 9 d. brown & ultramarine, wmk. Crown over Q, perf. 12½, each applied to small piece and handstamped 'SPECIMEN.' in violet by the Natal Post Office (Samuel type NA2) upon receipt from the UPU. A few minor age spots but rare and unique. Cert. BPA (1981).

262s+ 265s

△

120

(€ 105)

1903/11, High Values



6210

6210 £ 1 deep green, wmk. Crown over Q sideways, perf. 12½, a fine unused example from top left corner of the sheet, of vibrant fresh colour and superb og. A gem Gi = £ 2'000.

271

*

750

(€ 670)



6211

6211 £ 1 deep yellowish green, wmk. Crown on A sideways, perf. 13, a superb unused corner marginal pair from lower right corner of the sheet, thus showing the first stamp with the Retouch alongside the lower right "1" value tablet. Fresh and extremely fine, large part og. A delightful and very rare pair. Cert. RPS (2011) Gi = £ 6'000+.

Provenance: Collection W. Frazer, Spink, London, 5 May 2011, lot 421.

312d+ 312da

*

2'000

(€ 1'780)

1878/79, Stamp Duty



New Court House in Maryborough, Queensland



6212

6212 Proof of the 1 d. value printed in brown, engraved by William Bell, a scarce horizontal pair Imperforate on thick card paper, marginal from right with margins touched and some staining but very scarce. Ex Yardley collection.

| Gibbons | | Start price in CHF | Start price approx. € |
|-----------|-----|-----------------------|--------------------------|
| F33 Proof | (*) | 150 | (€ 135) |



6213



6213 Proof / Colour Trial of the 6 d. value in issued colour of yellow green, imperforate on white wove watermarked Crown over Q paper with sheet margin at base, toned at top but with some gum. Unusual and appealing - note the 'Duty Stamp' tablet with small retouches and ink splashes, illustrated in Basset Hull on plate XXIV. Ex Yardley collection.

| | | |
|---|-----|---------|
| * | 150 | (€ 135) |
|---|-----|---------|

- 1836** Proclaimed as a British Colony on 28 December 1836.
- 1839** First local Post Office Act introducing a rate of 3d. per letter, irrespective of weight, for all letters received or posted for delivery in the Colony.
- 1841** Postal rate for internal letters based on weight and distance carried.
- 1854** Inland rate of 2d. per ½ ounce weight on prepaid, double rate on unpaid letter mail.
- 1855** The first stamps printed from steel plates engraved by Perkins Bacon in London. Steel plates were then delivered to the Colony for further printings.
- 1868** First surface printing plates by De La Rue delivered to Adelaide for printing.
- 1874** First Official stamps overprinted ,O.S.‘



Proclamation of South Australia in 1836

1855, Printed in London



6214



Perkins Bacon printing rooms in London

| | | Gibbons | | Start price in CHF | Start price approx. € |
|------|--|---------|---|-----------------------|--------------------------|
| 6214 | 1 d. dark green, wmk. Large Star, imperforate, a fine unused example, ample margins on two sides and large at left and at top, of good rich colour and large part og. An exceptionally scarce stamp in unused condition $G_i = \pounds 10'000$. <i>Proveance: Collection John Boker; Harmers, London, 14 April 1981, lot 45.</i> | 1 | * | 2'500 | (€ 2'225) |



6215

| | | | | | |
|------|--|---|---|-----|---------|
| 6215 | 1 d. dark green, wmk. Large Star, imperforate, a very fine used horizontal pair, large to huge margins all round, of excellent colour, tied to small piece by "62" numeral obliterator of Coromandel Valley. Delightful and rare $G_i = \pounds 1'000+$. <i>Proveance: Collection Arthur Hind.</i> | 1 | △ | 300 | (€ 265) |
|------|--|---|---|-----|---------|



6216

| | | | | | |
|------|---|---------|------|-----|---------|
| 6216 | Plate Proof for 2 d. value in black, Plate I with dot in front of ear, a fine block of four with large margins all round, marginal from top of sheet. | 2 Proof | ⊞(*) | 150 | (€ 135) |
|------|---|---------|------|-----|---------|



6217

Gibbons

Start price
in CHFStart price
approx. €

- 6217** 2 d. rose-carmine, wmk. Large Star, imperforate, a fine used example, close to large margins all round, of vivid colour, struck with large part "CANCELLED" obliterator in black by Perkins Bacon, when donating the six stamps to Rowland Hill's nephew Ormonde Hill, an issue that led to the loss of Perkins Bacon's printing contract with many Colonies. A splendid example of this great rarity Gi = £ 11'000.

2

5'000 (€ 4'450)

6218



6219



6220

- 6218** 2 d. rose-carmine, wmk. Large Star, imperforate, a fine used example of excellent appearance, large margins all round and of excellent colour, redistributed og. Cert. BPA (1979) Gi = £ 800.

2

(*)

200 (€ 180)

- 6219** 2 d. rose-carmine, wmk. Large Star, imperforate, a group of seven used examples with singles (4) used in Adelaide, Angaston and "68" of McLaren Vale, single example with pre-printing horizontal paper-fold and an attractive strip of three used at Hindmarsh Gi = £ 500+.

2

150 (€ 135)

- 6220** 6 d. deep blue, wmk. Large Star, imperforate, a fine unused example with large margins all round, of excellent colour and appearance, small part og. A very rare stamp so fine. Cert. A. Diena (1962) Gi = £ 4'500.

Provenance: Collection Maurice Burrus, RL, London, 28 Nov 1962, lot 255.

3

*

1'000 (€ 890)

6221

- 6221** 6 d. deep blue, imperforate Plate Proof block of nine, close to large margins all round and sheet marginal at left, of fresh deep colour and delightful appearance, third stamp with corner bend otherwise fine, a scarce and attractive block.

3 Proof

田(*)

200 (€ 180)

*Sir Rowland Hill*

6222

*Alfred F. Lichtenstein**Louise Boyd Dale*

Gibbons

| | |
|-------------|-------------|
| Start price | Start price |
| in CHF | approx. € |

6222 6 d. deep blue, wmk. Large Star, imperforate, three fine used examples, close to large margins all round, of rich colour, trivial thins of no significance and not affecting appearance, each rejoined by hinges to their former positions in the block of six, all struck with large part "CANCELLED" obliterator in black by Perkins Bacon, when donating the six stamps to Rowland Hill's nephew Ormonde Hill, an issue that led to the loss of Perkins Bacon's printing contract with many Colonies. A splendid example of these rarities, being half of the only examples extant Gi = £ 30'000.

Provenance: Top Stamp: Collection Louise Boyd Dale & Alfred Lichtenstein, Harmers, London, 14 May 1990, lot 142.

Lower two Stamps: Collection Colonel Napier, RL, London, 11 May 1976, lot 1.

3

12'500 (€ 11'125)



6223

Gibbons

Start price
in CHF Start price
approx. €

- 6223** 6 d. deep blue, wmk. Large Star, imperforate, a four margined example, somewhat aged at top, used on Great Britain 1 d. pink postal stationery envelope to North Melbourne, Victoria tied by "10" numeral obliterator of Kensington. Corresponding 'Kensington / South Australia' despatch cds in black (Oct 9, 1858) on front and reverse with 'Adelaide' transit in blue (same day) and 'Ship Letter / Free / GPO Melbourne' arrival in red (Oct 14). A charming, attractive and very rare usage.

3



500 (€ 445)



*Perkins & Bacon
premises in London where South Australia's
first stamps were produced*



6224

- 6224** 1 s. violet, wmk. Large Star, imperforate, prepared for use and sent to the Colony but never issued, a wonderful and fresh unused example with large margins all round and portion of adjoining stamp at left, of excellent delicate colour, an outstanding example of this enormously rare and elusive stamp. Signed Herbert Bloch Gi = £ 26'000.

Note: The stocks of this stamp were destroyed on June 5, 1857 (date of confirmation letter from the Adelaide GPO signed by the Assistant Treasurer, Assistant Auditor and the Inspector of Stamps) as they could have been confused with the 6 d. value. It is thought that all surviving examples derive from a block of 24 released by Perkins Bacon, six of which were given to Ormonde Hill with the barred 'Cancelled' obliterator handstamp. From the balance of 18 stamps, four are in institutional collections and Michael Blake and Tony Presgrave located the whereabouts of 15 examples - one of which, judging by the margin on the left of this example is defective! What must be pointed out though is that these 24 stamps never reached South Australia.

4

(*)

7'500 (€ 6'675)



6225

| | | |
|---------------|-----------------------|--------------------------|
| Gibbons | Start price in CHF | Start price approx. € |
| 4 Proof 田 (*) | 400 | (€ 355) |

6225 Plate Proof for the 1 s. value in black, imperforate, an irregular block of thirteen and a vertical pair (lower Proof with noticeable re-entry in 'Postage' and in 'One Shilling' value tablet) with sheet margin at top. Scarce and generally fine, from the Dr. Osborne reconstruction of the Plate.

1856/58, Adelaide Printing, imperforated



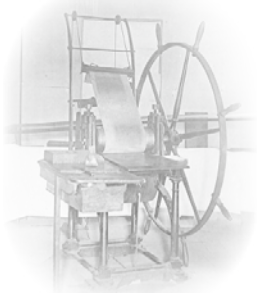
6226



6227



6228



Printing press sent to the colony
by Perkins Bacon

6226 1 d. deep yellow-green, wmk. Large Star, imperforate, an unused example of superb appearance, good to large margins all round, of rich defining colour, tiny inclusion at lower left and filled pinhole below the neck and without gum, otherwise a fresh and very attractive example of an exceedingly rare stamp Gi = £ 9'500.

6227 1 d. deep yellow-green, wmk. Large Star, imperforate, used example with ample to large margins all round with portion of adjoining stamp at base, in a dry shade, small wrinkle, unusually cancelled by 'Adelaide' datestamp in blue Gi = £ 550.

6228 1 d. yellow-green, a used example showing a 'dry' printing, large margins all round with portions of adjoining stamps at left and at right, cancelled lightly in black. Traces of an apparent re-entry on 'S' in POSTAGE at top. Scarce Gi = £ 650.

| | | | |
|---|-----|-------|---------|
| 5 | (*) | 1'000 | (€ 890) |
| 5 | | 180 | (€ 160) |
| 6 | | 200 | (€ 180) |



6229



View of Adelaide's Port River

Gibbons

Start price
in CHFStart price
approx. €

- 6229** 1 d. pale yellow-green, wmk. Large Star, imperforate, used block of four with just touched to large margins and sheet marginal at right, lightly cancelled by Adelaide obliterations in black. Despite the small imperfections, an exceptionally rare stamp in a multiple Gi = £ 2'000+.
Note: As far as we are aware, this appears to be the sole recorded block of four of this stamp.
Provenance: Colonel Napier, RL, London, 11 May 1976, lot 36.

6

**1'000**

(€ 890)



6230



6231

- 6230** 2 d. orange-red, wmk. Large Star, imperforate, a fine example with large margins all round and portion of adjoining stamp at base, used on 1858 cover to Gawler Place tied by PAID / ADELAIDE S.A. datestamp (Aug 4) in blue. Exceptional quality, a most attractive cover.
- 6231** 2 d. 'blood' red, wmk. Large Star, imperforate, a fine large margined example with 'dry ink' variety especially prominent at right where parts of the design are missing, used on 1857 entire letter within Adelaide, with PAID / ADELAIDE S.A. datestamp in red (May 4) at left. A most unusual entire.

7

**200**

(€ 180)

8

**200**

(€ 180)



6232



6233

- 6232** 2 d. red, wmk. Large Star, imperforate, a used horizontal strip of three, ample to large margins all round with portion of adjoining stamp at right, lightly cancelled by grill handstamp in black. Exceptional and most attractive multiple.
- 6233** 6 d. slate-blue, wmk. Large Star, imperforate, a fine used horizontal pair with ample even margins all round, of good colour with first stamp showing signs of re-entry on the SIX PENCE value tablet at base, lightly cancelled by Adelaide obliterations in black. A fine pair in choice quality Gi = £ 400+.

9

150

(€ 135)

10

180

(€ 160)



Maurice Burrus



John R. Boker Jr.



6234

Gibbons

Start price in CHF Start price approx. €

- 6234** 1 s. orange, wmk. Large Star, imperforate, the magnificent and famous used block of 21 (7 x 3), margins touched to fine, insignificant faults and one or two ironed bends, but of outstanding colour and freshness, with manuscript 'Received 8/11/58' removed from bottom row, all cancelled by multiple strikes of PAID / ADELAIDE S.A. date stamps (Sept 11, 1858) in blue. Illustrated in Colour Plate 1 of the Robson Lowe Encyclopedia. An extraordinary and unique multiple for the connoisseur of classic philately.
Provenance: Collection Julius Beresford, RL, London, 5 Feb 1958, lot 392.
Collection Maurice Burrus, RL, London, 28 Nov 1962, lot 289.
Collection John Boker, Harmers, London, 14 April 1981, lot 50.

12

田

10'000 (€ 8'900)

1858/59, Adelaide Printing, First rouletted issue



6235



Port Adelaide ca. 1855

Gibbons

Start price
in CHFStart price
approx. €

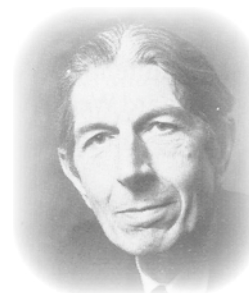
- 6235** Adelaide printing from Perkins Bacon Plates 1858/59: 1 d. light yellow-green, wmk. Large Star, rouletted, a magnificent unused block of four of vibrant fresh colour, full roulettes, and superb og. with the lower pair unmounted og. A wonderful multiple and a highlight of South Australian philately Gi = £ 4'000+.

Provenance: Collection John O. Griffiths, RL, London, 3 June 1992, lot 1108.

14 田*/**

2'000 (€ 1'780)

6236



Arthur Ronald Butler RDP

- 6236** Adelaide printing from Perkins Bacon Plates 1858/59: 6 d. slate-blue, wmk. Large Star, rouletted, a fine example used on second sheet of 1859 entire letter to Melbourne endorsed 'pr. Omeo' tied by "1" numeral obliterator with PORT ADELAIDE / S-A datestamp (Nov 17) alongside in black. Reverse with Melbourne arrival cds in red (Nov 23). A fresh and fine cover.

Provenance: Collection A. Ron Butler RDP, Spink, London, 22 Sept 2004, lot 1346.

17 ☒

200 (€ 180)

6237

- 6237** Adelaide Printing from Perkins Bacon Plates 1859 (March 18): 1 s. orange, rouletted, a used horizontal strip of three, rouletted on three sides and trimmed at base but with clear margin, all cancelled by 'Adelaide' datestamps in blue (Sept 28, 1860) with code '4' sideways. An attractive and scarce multiple Gi = £ 150+.

18

150 (€ 135)

1860/69, Second rouletted issue



6238



6239

6238 1 d. dull blue-green, wmk. Large Star, rouletted, a fine unused block of six of good definitive colour, fresh and fine, large part og. An attractive and scarce multiple Gi = £ 800+.

6239 1 d. sage-green, rouletted, a fine unused horizontal pair, of lovely rich colour, scissor cut well below roulettes at base (which run through value tablet), fresh and fine, large part og. Scarce Gi = £ 300+.

Gibbons

Start price
in CHF

Start price
approx. €

20 田*/**

250 (€ 225)

21 *

150 (€ 135)

6240

6240 1 d. pale red, wmk. Large Star, rouletted, unused blocks of four (2), each in differing shades from very pale to bright, large part og. Scarce and attractive multiples Gi = £ 2'000+.

24a 田*

400 (€ 355)

6241

6241 1 d. bright vermillion, wmk. Large Star, rouletted, a fine unused horizontal strip of three, of good colour, usual minor gum creasing, fresh and fine, large part og. An attractive and scarce multiple Gi = £ 450+.

26 *

150 (€ 135)



6242



6243



6245

6242 Plate Proof for the 4 d. value in black on white card paper, Plate 2 without dot on Queen's ear, a fine block of four, slight stain on one stamp. Scarce.

6243 6 d. dull ultramarine, wmk. Large Star, rouletted, a fine unused vertical strip of three, marginal from left of sheet with full 'Postage' watermark, slight horizontal crease from margin, of fresh colour and large part og. A most attractive multiple *Gi* = £ 675+.

Provenance: Collection Colonel Napier, RL, London, 11 May 1976, lot 94.

Gibbons

Start price
in CHFStart price
approx. €

27 Proof

田(*)

150

(€ 135)

30

*

200

(€ 180)



6244

6244 6 d. dull blue, wmk. Large Star, rouletted, a fine example used on 1867 registered cover to Rowlands Flat, neatly tied by 'Adelaide / S.A.' cds in black with curved REGISTERED handstamp in black at left. Scarce and most attractive cover.

32

✉

200

(€ 180)

6245 9 d. grey-lilac, wmk. Large Star, rouletted, a used example showing variety 'Double Impression' very clearly, lightly cancelled by part Adelaide cds in black. Exceptional and rare.

Provenance: Collection Maurice Burrus, RL, London, 28 Nov 1962, lot 317.

34 var

350

(€ 310)

1869, TEN PENCE inverted surcharge



John R. Boker Jr.



6246

Gibbons

Start price
in CHF

Start price
approx. €

6246 'Ten Pence' in black on 9 d. yellow, wmk. Large Star, rouletted, variety 'Surcharge Inverted at Top', the unique example used on 1869 cover with imprinted 'Overland via Marseilles' in red, mailed to London tied by 'Adelaide' datestamps (Oct 13) in black. Reverse with partial London arrival cds. the envelope with minor wrinkles but a wonderful and outstandingly rare cover, one of the true gems of South Australian philately. Cert. RPSL (1968) Gi = £ 7'000 off cover.

Provenance: Collection Colonel Napier.

Collection John Boker, Harmers, London, 14 April 1981, lot 58.

37a



10'000 (€ 8'900)



6247



6248

6247 1 s. chestnut, wmk. Large Star, rouletted, a used block of nine of excellent fresh colour, one trivial surface scuff on third stamp, otherwise of fine appearance and lightly cancelled by Adelaide obliterations in black. A rare large multiple.

6248 Plate Proof for the 2 s. value in dull claret / mauve, imperforate on thick white wove paper, fresh and very fine. Very scarce in this colour - it is interesting to note that the Robson Lowe Encyclopaedia catalogued the 4 d Plate Proof in black at £ 1, the 2 s. in black at £ 3 each and the mauve example offered here at £ 10. This example is believed to be the sole such outside the Royal Collection of Her Majesty Queen Elizabeth II.

Gibbons

Start price
in CHFStart price
approx. €

41

田

200

(€ 180)

43 Proof

(*)

350

(€ 310)

1868/71, Rouletted x perforated, Perforation experiments/Emergency Issue



6249



6250



front

6251



reverse

6249 1 d. bright green, wmk. Large Star, perf. 11½-12½ x roulette, a fine unused horizontal pair in fresh bright shade, with large part og. Scarce Gi = £ 700.

51

*

250

(€ 225)

6250 6 d. Prussian blue and 6 d. indigo, wmk. Large Star, rouletted issue perforated 11½-12, an unused vertical pair in the Prussian blue shade, with large part og., and an unused horizontal pair in the indigo shade, some staining from iron spits and gum creased, with part og. Despite imperfections, very scarce unused multiples Gi = £ 3'800.

57+ 58

*

750

(€ 670)

6251 'Ten Pence' in blue on 9 d. yellow, wmk. Large Star, perf. 11½ x rouletted, a fine used example showing variety "Printed on Both Sides", cancelled by neat cds in black (June 18, 1869). A rare stamp in much above average condition Gi = £ 1'400.

59a

400

(€ 355)

1868/79, Perforated



6252



6253

- 6252** 1 d. deep yellow green, wmk. Large Star, perf. $11\frac{1}{2}$ - $12\frac{1}{2}$, a superb unused block of four of vibrant colour, fresh and very fine, large part og. A very scarce stamp in a multiple Gi = £ 680+.
- 6253** Plate Proof for the 9 d. value, printed in black on soft white wove paper, a block of 21 (7 x 3), marginal from left of sheet, margins just touched at upper left corner and at right, lower horizontal row with unobtrusive crease, nevertheless a splendid and rare multiple.
Provenance: Collection Peter Jaffé, 2006.

Gibbons

Start price
in CHF Start price
approx. €

65

田*

200 (€ 180)

75 Proof

田*

500 (€ 445)

6254

- 6254** 1 d. green (shades), wmk. Large Star, perf. 10, the unused selection with 1 d. pale bright green, 1 d. bright green and a 1 d. in a dull green shade, each fresh and fine with large or small part og. A scarce group in much above average quality Gi = £ 800+.

88+ 89+ 90

*

250 (€ 225)

6255



Steamer 'Royal Shepherd'

- 6255** '3-PENCE' on 4 d. pale ultramarine, wmk. Large Star, perf. 10, overprinted in black, a fine used example on 1872 cover to Melbourne endorsed 'per Royal Shepherd' at top, tied by 'Port Adelaide' cds (March 21) in black. Reverse with Melbourne arrival cds (March 25). Couple of envelope imperfections but a scarce stamp on letter.
Provenance: Sefi Pemberton & Co., 20 May 1936.

92

✉

150 (€ 135)

1870/73, Compound perforation



6256

Gibbons

Start price
in CHFStart price
approx. €

- 6256** 1 d. deep green, compound perf. $11\frac{1}{2} \times 10$, an unused horizontal strip of three, marginal from right of sheet, one stamp light iron spot otherwise fresh and very fine, large part og.
Gi = £ 570+.

101

*

150

(€ 135)



Baron Philipp von Ferrary



Maurice Burrus



John R. Boker Jr.



6257

- 6257** 10 d. on 9 d. yellow overprinted in black, compound perf. $10 \times 11\frac{1}{2} - 12\frac{1}{2}$, a superb and fresh unused horizontal strip of five, of brilliant colour and superb og. Extremely rare stamp in a multiple and with exceptional provenance. A gem Gi = £ 1'500+.
*Provenance: Collection Baron Philipp von Ferrary, Sale 7, Paris, 13-15 June 1923, lot 103.
Collection Maurice Burrus, RL, London 28 Nov 1962, lot 332.
Collection John Boker, Harmers, London, 14 April 1981, lot 66.*

107

*

750

(€ 670)

1871 (July), 4 d., perf. 10, Watermark 'V' over 'Crown'



front

6258



reverse

- 6258** 4 d. dull lilac, wmk. V over Crown, perf. 10, a superb used example with variety "Printed Both Sides", of excellent colour and neatly cancelled by 'GPO / Adelaide' datestamp (Sept 11, 1871) in black. Extremely rare and a choice example Gi = £ 4'250.

111a

2'000

(€ 1'780)



6259

Gibbons

Start price
in CHF Start price
approx. €

- 6259** 1877 (Dec 29): 6 d. Prussian blue, wmk. Broad Star, perf. $11\frac{1}{2} \times 10$ and compound, the magnificent and famous unused block of 48, being the top four horizontal rows of the sheet with full margins at top and sides, perf. $11\frac{1}{2} \times 10$ throughout but for one vertical row perforated $12\frac{1}{2}$ and margin at right perforated $10\frac{1}{2}$ with the rotary machine, with imprint requisition number "6D 1724" in black, slight stain at left, but of wonderful colour, minor creases and perf. separation as one would expect of a block this size, superb og or unmounted og. Delightful and a very rare Exhibition piece Gi = £ 6'240+.

Provenance: Collection Colonel Napier.

RL, London, 19 April 1977, lot 197.

Collection John Boker, Harmers, London, 14 April 1981, lot 69.

139 田*/** **3'000** (€ 2'670)



6260



6261

- 6260** 1887: 2 s. rose-carmine, wmk. Broad Star, perf. $11\frac{1}{2} \times 10$ and compound, a fine used horizontal pair, showing variety "Imperforate Between Vertically" and a resulting vertical bend, slight corner crease but neither affecting the fine appearance of this rare variety Gi = £ 1'800.

145a

600 (€ 535)

- 6261** 1901/02: 1 s. dark reddish brown, wmk. Crown SA, perf. $11\frac{1}{2}$ (large holes), a vertical strip of three, marginal at base showing the variety "Imperforate Between Horizontally", imperforate at top and between stamp and margin, fresh and very fine with full unmounted og., a rare variety - just three vertical strips of three and a vertical pair are recorded, this example in wonderful condition Gi = £ 2'750+.

Provenance: Collection E. R. Slade Slade, Harmers, Sydney 29 Nov 1979, lot 321.

148a

**

1'000 (€ 890)

1868/76, De La Rue plates and electrotypes, Surface Printed Issues



6262

Gibbons

Start price
in CHF Start price
approx. €

- 6262** 1874: Essay for proposed 1 d. value on small brown card, 29 x 31 mm., dated at top "26. Jun. 1874" with printed Victoria vignette in pale green and hand-painted surround painted in deep green, turquoise and SOUTH AUSTRALIA and ONE PENNY picked out in Chinese white. See 'The De La Rue Collection' edited by Frank Walton FRPSL, plate 7001. The Essay was rejected in favour of the issued January 1875 1 d. blue-green. A delightful and extremely rare Essay.

Provenance: Collection Henry Frenkle, RL, London, 26 Sept 1979, lot 1205.

Essay (*) **1'000** (€ 890)



6263



6265

- 6263** 1868/76: 2 d. pale orange-red, Trail Colour Plate Proof block of eight with Plate Number "2" in lower right corner margin, on gummed paper, unmounted og. Slightest of creases in margin only but scarce and most attractive.

152 Proof 田** **200** (€ 180)



ex 6264

- 6264** 1877/80: Trial Colour Plate Proofs for the 2 d. value, all on thin white wove paper, watermarked 'Crown over SA' (wide), in seven blocks of four in a range of seven different shades: steel blue, deep green, deep violet, orange-red, deep carmine, brick-red, and rose-red. Generally superb, a lovely group.

152 Proofs 田(*) **280** (€ 250)

- 6265** 1871, 2 d. brick-red, wmk. V over Crown, perf. 10, an unused block of four centred to right, clearly showing the watermark in margin, slight gum staining in margin, one stamp small part, balance with large part og. A scarce multiple Gi = £ 720+.

166 田* **200** (€ 180)



ex 6266



Adelaide from the River Torrens

Gibbons

| | |
|-------------|-------------|
| Start price | Start price |
| in CHF | approx. € |

- 6266** 1878/87: Group of four covers all from a correspondence to Newry, Ireland, with 1878 registered cover bearing 1877 1 s. red brown single franking from Adelaide, 1880 with 1876 2 d. orange-red in a block of four, 1883 registered cover with 1876 2 d. orange-red single and block of four used from Kooringa and 1888 cover sent registered with pair of 1876 2 d. orange-red and single 1887 6 d. pale blue. Faults but an attractive group.

| | |
|-----------|----|
| 168+ 185+ | |
| 125 | ☒田 |

| | |
|------------|---------|
| 150 | (€ 135) |
|------------|---------|



6267



6269

- 6267** 1894: De La Die Proof for 1 d. value in black on glazed white card, for the re-engraved plate, dated "16 Oct. 1894" in blue at top. Fresh and very fine Proof.
Provenance: Collection A. Ron Butler RDP, Spink, London, 22 Sept 2004, lot 1413.

| | | | |
|-----------|-----|------------|---------|
| 175 Proof | (*) | 200 | (€ 180) |
|-----------|-----|------------|---------|



6268



- 6268** 1896/1904: 1 d. rosine, 2 d. bright violet, 1891/93 2½ d. on 4 d. pale green, 5 d. on 6 d. pale brown, 1894/96 2½ d. violet-blue, 5 d. brown-purple, 2½ d. indigo and ½ d. yellow-green; all on piece from the Natal Post Office archives, four with pre-cancels in black, all overprinted with three different types of SPECIMEN in black or violet (Samuel NA2). A unique group. Cert. BPA (1981).

| | |
|-----------|---|
| 176+ 178+ | |
| 229+ 230+ | |
| 234+ 235+ | |
| 237+ 241 | △ |

| | |
|------------|---------|
| 200 | (€ 180) |
|------------|---------|

- 6269** 1882: De La Rue Die Proof for ½ d. value in black on glazed white card, showing the 'Double Die' method, handstamped '30 JAN 82' at top in blue with BEFORE HARDENING in black. A fine and scarce Proof.

| | | | |
|-----------|-----|------------|---------|
| 182 Proof | (*) | 200 | (€ 180) |
|-----------|-----|------------|---------|

1883/99, De La Rue, New Designs



6270



6271



6272

6270 1882/83: De La Rue imperforate Colour Trial for ½ d. value in pale green on gummed unwatermarked white wove paper, a block of twelve (4 x 3), marginal from right of sheet with Plate Number "1" at right, diagonal crease at left but fresh and very fine, unmounted og. An attractive block.

6271 1885: De La Rue Essay for 3 d. value, unadopted, hand-painted in pale green and green on thick brown card, the POSTAGE & REVENUE and THREE PENCE and SOUTH AUSTRALIA all picked out in Chinese white, dated at top "1 July 1885" in manuscript. See 'De La Rue Collection' edited by Frank Walton RDP plate 7003. A beautiful and particularly lovely Essay.

6272 1885: De La Rue Essay for 6 d. value, unadopted, hand-painted in pale mauve and mauve on thick brown card, the POSTAGE & REVENUE and SIX PENCE and SOUTH AUSTRALIA all picked out in Chinese white, dated at top "1 July 1885" in manuscript. See 'De La Rue Collection' edited by Frank Walton RDP plate 7003. A beautiful and particularly lovely Essay.

Gibbons

Start price
in CHFStart price
approx. €

182 Proof

田**

150

(€ 135)

183 Essay

(*)

1'000

(€ 890)

185 Essay

(*)

1'000

(€ 890)



ex 6273

6273 1886/90: 3 d. sage-green, 4 d. pale violet and 6 d. pale blue, wmk. Crown over SA, rough perf. 10, all in horizontal strips of five, two with margin, all overprinted SPECIMEN in black, some perf. irregularities but fresh and very fine, superb og. or unmounted og. A charming trio.

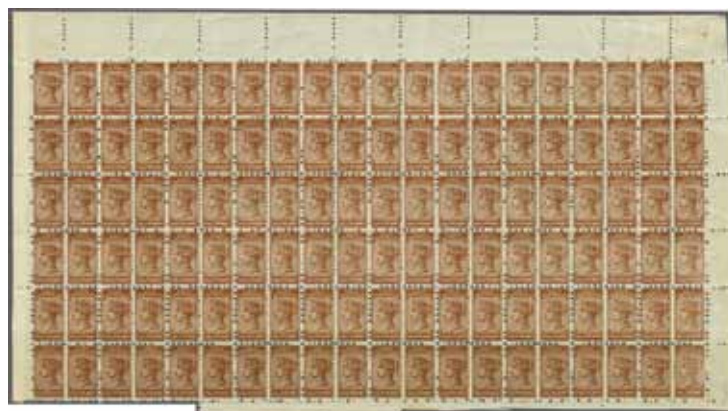
183+ 184+

185

*/**

200

(€ 180)



6274

6274 1891 (Sept 25): Bantam ½ d. red-brown, wmk. Crown over SA, a complete unused pane of 120 stamps (20 x 6), complete margins on three sides and most of margin at base, showing the compound perf. 10 x 11½ affecting the alternate vertical rows, a few wrinkles as to be expected on a multiple this size, fresh and very fine, large part or unmounted og. Rare and splendid piece Gi = £ 3'500+.

186 田**

750

(€ 670)

1886/96 The 'Long' Stamps, 'POSTAGE & REVENUE'



6275



6276



6277

Gibbons

| Start price in CHF | Start price approx. € |
|-----------------------|--------------------------|
|-----------------------|--------------------------|

6275 1886/96: 15 s. brownish-yellow, wmk. Crown over SA, perf. 10, a fine unused example of good colour, minor wrinkling, small paper hinge, large part og. A scarce stamp. Cert. BPA (1981) Gi = £ 750.

198

*

200 (€ 180)

6276 1886/96: £ 1 blue, wmk. Crown over SA upright, perf. 11½-12, a fine unused example, of brilliant freshness, well centred, superb og. A delightful stamp Gi = £ 500.

199a

*

180 (€ 160)

6277 1886/96: £ 2 Venetian-red, wmk. Crown over SA upright, perf. 11½-12, a fine unused example, brilliant fresh deep colour, superb og. A very rare stamp in exceptional quality. Signed Herbert Bloch. Cert. BPA (1983) Gi = £ 3'750.

200a

*

1'000 (€ 890)

6278



Adelaide's Government House

6278 1886/96: £ 4 lemon, wmk. Crown over SA upright, perf. 11½-12, a fine unused example, of brilliant freshness and superb centering, superb large part og. A lovely example of this extremely rare stamp. Cert. RPSL (1964) Gi = £ 8'500.

Provenance: Collection William Frazer; Spink, London, 18 Sept 2003, lot 363.

203a

*

3'000 (€ 2'670)

6279



6280

6279 1886/96: £ 5 brown, wmk. Crown over SA sideways, perf. 11½-12, a fine unused example of good colour, perforations slightly blunted, very fresh and fine, large part og. Signed Herbert Bloch, A. Diena, E. Diena. Certs. Friedl (1977) and Philatelic Foundation (1977) Gi = £ 5'500.

205

*

1'200 (€ 1'070)

6280 1886/96: £ 5 brown, wmk. Crown over SA upright, perf. 11½-12, a fine used example, of brilliant freshness in a deep shade, cancelled by part obliterator handstamp in black. A stamp of great scarcity Gi = £ 1'000.

Provenance: Collection William Frazer; Spink, London, 18 Sept 2003, lot 365.

205

250 (€ 225)

1891/93, Surcharges



No stop after 'D'

6281

Gibbons

Start price in CHF Start price approx. €

- 6281** 5 d. in red on 6 d. pale brown, a fine unused block of eighteen (6 x 3), well centred and of fresh colour, the twelfth stamp in the block showing variety "No Stop after D", fine unmounted og. A lovely multiple Gi = £ 475+.

230+ 230b 田*/**

180 (€ 160)

1894 (June), New Designs



6282

- 6282** De La Rue Essay for the proposed 2½ d. design as accepted, hand-painted on thick card, 24 x 27 mm., with the Red Kangaroo in black ink and in pencil, Queen's head in ink and the tablets SOUTH AUSTRALIA and TWO PENCE HALFPENNY picked out in Chinese white. See 'De La Rue Collection' edited by Frank Walton RDP, plate 7011. An exquisite and wonderful Essay.

234 Essay

(*)

1'500 (€ 1'335)

1902/04, The 'Long' Stamps/thin 'POSTAGE'



6283

- 6283** 8 d. ultramarine, wmk. Crown over SA upright, perf. 11½-12½, a c.t.o. used example, showing variety "EIGHT" for EIGHT, lightly cancelled in black, leaving the variety clear. Slightly nibbed perfs. but scarce and attractive Gi = £ 3'000.

272a

500 (€ 445)



6284



6285

Gibbons Start price in CHF Start price approx. €

- 6284** 9 d. rosy-lake, wmk. Crown over SA, perf. 11½-12, a fine unused corner marginal vertical pair with Plate Number "1" in margin, variety "Imperforate Horizontally Between", of rich vibrant colour, some perf. separation, fresh and fine, large part og. Slight bend in margin only not detracting from the lovely appearance of this very rare pair Gi = £ 2'750.
Provenance: Collection William Frazer, Spink, London, 18 Sept 2003, lot 351.
- 273a * **1'200** (€ 1'070)

1902/04, The 'Long' Stamps/thick 'POSTAGE'

- 6285** 1 s. brown, wmk. Crown over SA upright, perf. 12, a superb unused block of four of good colour and centering, variety "Imperforate Between Horizontally", marginal from left of sheet with description in ink in margin, exceptionally fine, full unmounted og. Extremely rare Gi = £ 5'000+.
- 288a 田* **2'000** (€ 1'780)



6286

- 6286** 1 s. brown, wmk. Crown over SA upright, perf. 12, a superb unused horizontal pair of good colour and centering, variety "Imperforate Between Vertically", fresh and very fine, superb og. Rare Gi = £ 2'750.
- 288b * **750** (€ 670)



6287

Gibbons

Start price
in CHFStart price
approx. €

- 6287** 1905/12: 2½ d. indigo-blue, wmk. Crown over A, perf. 12½ x 11½, a fine unused block of twelve from lower left corner of the sheet, with Plate Number "1" in margin, dramatically mis-perforated due to pre-printing paper fold, fresh and fine, large part or unmounted og. An attractive variety.

296 田*/**

150 (€ 135)

General Official Stamps



6288

- 6288** 1874/76: Overprinted O.S. in black, perf. 11½-12 x 10, 4 d. dull violet, 6 d. Prussian blue and 2 s. carmine, fine unused examples, the very rare 2 s. carmine perf. 10 x 11½, fresh and largely fine, large part og. The 2 s. unpriced unused by Stanley Gibbons.

O3+ O4+
O5

*

150 (€ 135)

6289



6290



6291

- 6289** 1876/85: 6 d. bright ultramarine, wmk. Large Star, perf. 10 x 11½-12½, overprinted O. S. in black, a fine unused block of four, of excellent delicate colour, with fault to 'O' in 'O. S.' on second stamp, fresh and fine, large part og. with lower pair unmounted og. Gi = £ 560+.
- 6290** 1891: 2½ d. on 4 d. deep green, perf. 10, overprinted O. S. in black, a fine used vertical pair, lower stamp with variety "O. S. Omitted", lightly cancelled in black. A few minor imperfections but with interesting notations on hinge regarding purchase from H. R. Harmer in 1932. A very rare pair Gi = Listed but Unpriced.
- 6291** 1891/96: 4 d. orange-red, wmk. Crown over SA, perf. 10, overprinted O. S. in black, a fine unused block of four of excellent centering and colour, superb large part og. with lower pair unmounted og. Gi = £ 240+.

O19

田*

180 (€ 160)

O51d

1'000 (€ 890)

O55

田*/**

100 (€ 90)



6292

- 6292** 1891/99: 4 d. slate-violet, wmk. Crown over SA, perf. 15, overprinted O. S. in black, a fine unused horizontal pair, variety "O. S. Overprint Double", fresh and fine, large part og. Gi = £ 950.

Gibbons

Start price
in CHF Start price
approx. €

O66a

*

200

(€ 180)



6293



6294



6295

- 6293** 1891/99: 6 d. blue, wmk. Crown over SA, perf. 13, overprinted O. S. in black, a fine unused block of four, marginal from top of sheet with part "O. S." in margin, fresh and very fine, stamps unmounted og. Gi = £ 280+.
- 6294** 1891/95: 5 d. on 6 d. brown, wmk. Crown over SA, perf. 10, overprinted O. S. in black, a fine unused block of nine, fresh and very fine, large part og. with seven stamps unmounted og. Gi = £ 495+.
- 6295** 1899/1901: 1/2 d. yellow green, perf. 13, overprinted O. S. in black, a fine unused block of four, single unused example with variety "O. S. Inverted", part og., and single example with "No Stop after S" error, large part og. Gi = £ 300+.

O70

田**

100

(€ 90)

O72

田*/**

180

(€ 160)

O80+

O80a+

O80b

田*

100

(€ 90)

General Official 'Long' Stamps



6296



6297

- 6296** 1891 (May): 5 s. pale rose, wmk. Crown over SA sideways, perf. 10, overprinted O. S. in black, a fine unused example of good colour and large part og. An immensely rare stamp with just one sheet of 60 stamps issued. Signed Herbert Bloch. Cert. BPA (1980) Gi = £ 8'000.
- 6297** 1891 (May): 5 s. pale rose, wmk. Crown over SA sideways, perf. 10, overprinted O. S. in black, a fine used example cancelled by part 'Adelaide' cds in black, fresh and very fine, a very rare stamp with just 60 printed. Signed Tommy Allen. Cert. BPA (1980) Gi = £ 6'000.

O87

*

3'000

(€ 2'670)

O87

2'000

(€ 1'780)

- 1804** Governor Collins arrived with over 400 convicts from Port Phillip (Victoria).
- 1824** Van Diemen's Land was proclaimed independent of New South Wales.
- Prior to 1825** Tasmanian postal arrangements were under the authority of the Chief Postmaster in Sydney, NSW
- 1828** Erection of General Post Office in Hobart. Appointment of General Postmaster. First legislative Postal Act fixing letter rates.
- 1842** Distance-weight sliding scale abolished. Letters per ½ ounce weight in Hobart and Launceston 2d., Inland letters 4d.
- 1853** Van Diemen's Land was renamed Tasmania in August 1853. First adhesive postage stamps issued and use of adhesive stamps on letter mail made compulsory: 1d. per ½ ounce on town letters, 4d. per ½ ounce on inland and ship letters. The first stamps printed from steel plates engraved by Perkins Bacon in London. Steel plates were then delivered to the Colony.

Corresponding 1d. and 4d. adhesive stamps locally engraved in steel plates by C.W.Coard, printed by H. and C. Best at the 'Courier' Newspaper Office.
- 1855** New stamp issue printed from steel plates engraved by Perkins Bacon in London. Steel plates were then delivered to the Colony for further printings.
- 1856** Tasmania was granted self-government.
- 1870** First surface printing plates by De La Rue, typographed in the Colony.
- 1882** Fiscal stamps authorised for postal use.



*Colonel David Collins
1st Lt. Governor of Van Diemen's Land*



Southwest view of Hobart Town

1853 (Nov.), First Issue on medium soft yellowish paper



Alfred F. Lichtenstein



Louise Boyd Dale



6298



6299

Gibbons

Start price
in CHF

Start price
approx. €

- | | |
|--|-----------------------------------|
| <p>6298 1 d. blue, a fresh unused example in a deep shade with all cross-hatching distinct, sheet marginal at left and enormous margins on all sides, slightest of vertical gum bends in margin only not detracting from the lovely appearance, of wonderful colour and large part og. A beautiful stamp. Signed Warren H. Colson Gi = £ 12'000. <i>Provenance: Collection Louise Boyd Dale & Alfred Lichtenstein, Harmers, London, 14 May 1990, lot 169.</i></p> | <p>2 * 5'000 (€ 4'450)</p> |
| <p>6299 1 d. blue, a superb used example with distinct cross-hatching in a slightly greenish blue-shade, marginal from top of sheet and with huge margins on all sides, lightly cancelled in black. A gem Gi = £ 1'500.</p> | <p>2 1'000 (€ 890)</p> |



View of Launceston ca. 1855



6300

- | | |
|---|-----------------------------------|
| <p>6300 1 d. blue, a superb used example with large margins all round and in a vibrant shade, used on 1855 entire letter to Invermay tied by fine "60" numeral obliterator of Launceston. Fine strike of circular 'PRE-PAID / 4.O'CLOCK' datestamp in red at left (Oct 1). The entire with file fold and small tear in face panel, containing an invoice for a Parasol, Kid Gloves, Skirt and Lady's Bonnet etc. A rare and interesting cover.</p> | <p>2 ✉ 3'500 (€ 3'115)</p> |
|---|-----------------------------------|

1853 (Nov.), First Issue on hard white paper



Flourmill in Launceston



6301

Gibbons

Start price
in CHF

Start price
approx. €

- 6301** 1 d. blue, position 19, a fine used example with good even margins all round, background only slightly blurred, cancelled by "59" numeral obliterator of Launceston. Scarce and fine stamp. Cert. RPS (2001) Gi = £ 1'300.

4

400

(€ 355)

1853, Four Pence, plate I



6302

- 6302** **Fine Engraving** 1853 (Nov): 4 d. bright red-orange, Plate I, imperforate on vertically laid paper and thus from the Proof sheet of 24 subjects, with ample to large margins all round. Extremely attractive and a superb and rare Proof Gi = £ 10'000.

5 Proof

(*)

3'000

(€ 2'670)



6303



6304

- 6303** 4 d. bright red-orange, Plate 1, imperforate on wove paper, a superb used example with large even margins all round, of bright colour, minor wrinkle, neatly cancelled by "59" numeral obliterator of Launceston in black. A delightful stamp Gi = £ 1'000.
- 6304** **Second State of the Plate** 1853 (Nov): 4 d. orange, a fine used example in a bright shade, with large margins on all sides, cancelled by probable "59" numeral obliterator of Launceston in black. A fine and most attractive stamp Gi = £ 400.

5

350

(€ 310)

8

180

(€ 160)

1853 (Nov.), Four Pence, plate II



6305

Gibbons
Start price in CHF Start price approx. €

6305 4 d. bright orange, Plate II, imperforate on vertically laid paper and thus from the Proof sheet of 24 subjects, with ample to huge margins all round and of vibrant colour. Extremely attractive and a superb and rare Proof Gi = £ 10'000.
10 Proof (*) **3'500** (€ 3'115)



6306

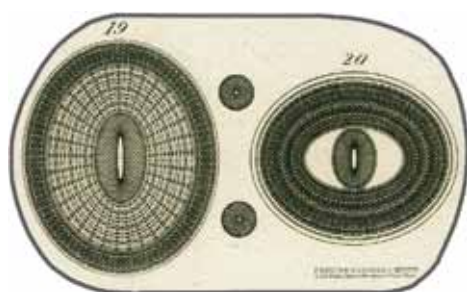
6306 14 d. orange, Plate II, position 10, lines of background blurred, an exceptional used example with good to large margins all round, of lovely colour, cancelled by "59" numeral obliterator of Launceston in black. Signed A. Diena Gi = £ 425.
10 **200** (€ 180)

1855, Chalon Heads, London Printing



6307

6307 1854: Perkins Bacon Original Die Proof by Humphrys, printed in deep black on thick card, with remarkable engine-turning surround and head-plate and without value, 'Postage' or country inscriptions. Wonderful and of great rarity.
Provenance: Collection Sebastian Earl, RL, Geneva, 25 April 1980, lot 2081.
14 Proof * **2'500** (€ 2'225)



6308



6309

Gibbons

Start price
in CHFStart price
approx. €

- 6308** 1820/22: Small part of the sample Plate produced and inscribed by "Perkins, Fairman & Heath / London. Patent Hardened Steel Plate" in microscopic lettering at base. The oval engine turning for item '20' being very similar to both the Tasmania Chalon issue and the Peru Steam Navigation Company issue of 1857. In June 1854 Perkins, Bacon were awarded the contract for the Chalon issue, William Humphrys being responsible for the head-plate from a water-colour sketch by E. Corbould.

- 6309** Perkins Bacon Die Proof for the rejected / unfinished Transfer 1 d. Die, printed in black on soft surfaced white card, 43 x 47 mm., without 'Van Diemens Land' at top, with oval surround guide lines in pencil. For similar examples in black and vermillion see Sebastian Earl lots 2086 and 2087. A rare and beautiful Proof.

| | | | |
|----------|-----|------------|---------|
| 14 Proof | (*) | 100 | (€ 90) |
| 14 Proof | (*) | 250 | (€ 225) |



6310

- 6310** Perkins Bacon Original Die Proof by Humphrys, printed in deep black on thick card, 30 x 38 mm., the completed Die Proof. Fresh, very fine and very rare.

Provenance: Collection Sebastian Earl, RL, Geneva, 25 April 1980, lot 2082.

| | | | |
|----------|-----|--------------|-----------|
| 14 Proof | (*) | 1'500 | (€ 1'335) |
|----------|-----|--------------|-----------|



6311



6312

- 6311** 1855 (Sept 16): 1 d. carmine, wmk. Large Star, imperforate, a fine used example with ample to large margins all round and portion of adjoining stamp at right, merest impression of a tiny thin spot from previous hinge mentioned for accuracy only, cancelled by "64" numeral obliterator of Hobart in black. A fine example of a rare stamp. Signed A. Diena Gi = £ 900.

- 6312** Die Proof for the 2 d. value in green, prepared by De La Rue from the Perkins, Bacon Plates, on thin white wove paper, 26 x 33 mm., for the Paris Exhibition of 1870. Fresh and very fine, see Sebastian Earl sale lot 2085, there are believed to be just three examples struck for display at the Exhibition. Rare.

| | | | |
|----------|-----|------------|---------|
| 14 | | 300 | (€ 265) |
| 15 Proof | (*) | 500 | (€ 445) |



6313



6314



ex 6316

Gibbons

Start price
in CHF Start price
approx. €

- 6313** 2 d. deep green, wmk. Large Star, imperforate, a fine used example with good margins all round, of excellent colour, lightly cancelled in black. Cert. RPSL (1969) Gi = £ 550.
- 6314** 2 d. deep green, wmk. Large Star, imperforate, an unused example with close to large margins on three sides, shaved vertically at right, of fine colour, fingerprint mark on the partial og. and with horizontal roulette at top. Rare and most unusual stamp. Cert. RPSV (1985) which states '*is genuine, unofficial roulettes may be contemporary*'. Gi = £ 5'500.

15

180 (€ 160)

15 var

*

500 (€ 445)

6315

- 6315** Perkins Bacon 4 d. value, the Master Die Proof in black on thick card, 31 x 38 mm., superb Proof of gorgeous execution and extremely rare.
- 6316** 4 d. blue or deep blue, wmk. Large Star, imperforate, used examples (5) with two very fine single examples and a pair, all with four margins and cancelled lightly in black. An attractive group Gi = £ 650.

17 Proof

(*)

2'500 (€ 2'225)

17/18

200 (€ 180)

6317



City View of Hobart ca. 1855

- 6317** 4 d. blue, wmk. Large Star, imperforate, two examples each with good margins, used on 1856 entire letter from Hobart to London endorsed 'per Red jacket', tied by "68" numeral obliterations in black. Circular 'General Post Office / Hobart / Crown / VDL' datestamp alongside (Jan 5) in red. Reverse with AUSTRALIAN / PACKET / LIVERPOOL datestamp in black (April 8) in black and London arrival where charged with handstruck '1/-' due marking in black. File fold well away from adhesives but a rare and most appealing entire. Provenance: Collection Maurice Burrus, RL, London, 28 Nov 1962, lot 496.

18

✉

500 (€ 445)

1856/57, Chalon Heads, Local Printing by H. C. Best without watermarks



6318

Gibbons

Start price
in CHFStart price
approx. €

- 6318** 1 d. deep red-brown, Papermaker's Watermark with lettering, a fine used example lightly cancelled in black and by part red datestamp. Extremely rare and unusual. Cert. BPA (1979)
Gi = unlisted.

24 var

200

(€ 180)

1857/67, Chalon Heads, Local Printing by H. C. Best with watermark 'Numerals'



6319



6320



6321

- 6319** 1 d. pale brick-red, wmk. '1' inverted, a superb used strip of three from the first printing, huge margins all round and portion of adjoining stamp at right, from the base of the sheet, fine delicate colour, boldly cancelled by "75" numeral obliterations of Hobart in black. An important and rare strip in the foremost quality and of excellent pedigree Gi = £ 120+.
Provenance: Collection Maurice Burrus, RL, London, 28 Nov 1962, lot 526.
Collection Professor Enrico Bombieri, Spink, Melbourne, 28 March 1999, lot 1079.

26

300

(€ 265)

- 6320** 2 d. yellow-green, wmk. '2' upright, a fine used horizontal pair in a pale shade with huge margins all round, lightly cancelled by "6" numeral obliterator of Bothwell. Scarce and most attractive Gi = £ 220+.

32

150

(€ 135)

- 6321** 2 d. slate-green, wmk. '2' upright, a fine used horizontal pair, large margins all round and in a greyish shade, minute corner fault at lower right, neatly cancelled by "20" numeral obliterator of Circular Head in black.

34

100

(€ 90)



6322

- 6322** 6 d. dull lilac, wmk. '6', a fine used example on 1858 cover from Launceston to Moorfields, London, franked additionally with Great Britain 1856 2 d. blue, perf. 14 and 1855/57 4 d. pale carmine to make up the 1 shilling rate, all tied by "60" numeral obliterations of Launceston with diamond 'POST OFFICE / LAUNCESTON / Crown' datestamp in red of despatch (Sept 11) at left. London arrival cds also on obverse (Nov 13) in red. A charming and extremely rare combination cover.
Provenance: Collection J. Grant Glassco, RL, London, 25-237 Nov 1969, lot 1973.

40

**1'000**

(€ 890)



Launceston Theatre ca. 1855



6323



Maurice Burrus

Gibbons

Start price
in CHFStart price
approx. €

- 6323** 1 s. vermillion, wmk '12' upright, a wonderful unused horizontal strip of four in a bright shade, close but not touched at right with large margins on three sides, marginal watermark at base, minor bend of no significance, fresh and very fine with large part og. A dramatic and lovely multiple $G_i = £ 3'200+$.

Provenance: Collection Maurice Burrus, RL, London, 28 Nov 1962, lot 469.

Christie's, Melbourne, 10 May 1991, lot 273.

41

*

2'000 (€ 1'780)

1863/71, Chalon Heads, unofficial roulettes and perforations



6324



Port Arthur ca. 1865

- 6324** 4 d. pale blue, wmk. '4', rouletted 7 and horizontally perf. $11\frac{1}{2}$ by J. Walch & Sons of Hobart, a fine used horizontal pair, cancelled "Port Arthur 12/1/69" in manuscript ink. Extremely scarce. Cert. BPA (1983) $G_i = £ 900$.

52 var

200 (€ 180)

View of New Norfolk



6325

- 6325** 4 d. blue, perforated 12 x 12 by J. Walch & Sons under Contract, a fine example used on 1870 cover to Ouse tied by "63" numeral obliterator with "N. NORFOLK / 11.6.72" datestamp in black at left. A fine and scarce cover.

73

**200** (€ 180)

1870/71, Surface Printings from plates made by De La Rue



6326

Gibbons

Start price
in CHFStart price
approx. €

- 6326** De La Rue archive Essay for the 1 d. value, frame only Essay on thick card, 42 x 51 mm., with TASMANIA and ONE PENNY inked in Chinese white over hand-painted background in grey and in black. Wonderful and extremely fine. Unique.
Provenance: RL, London, 24 July 1976, lot 447.

127 Essay

(*)

750

(€ 670)



6327

- 6327** De La Rue Die Proof for 1 d. value in black on glazed white card, struck with BEFORE HARDENING and dated 'Mar. 19, 1870' at top. Superb and rare.
Provenance: Collection A. Ron Butler RDP, Spink, London, 25 July 2007, lot 655.

127 Proof

(*)

200

(€ 180)



6328

- 6328** De La Rue Die Proof for 2 d. value in black on glazed white card, struck with BEFORE HARDENING and dated 'Mar. 25, 1870' at top. Superb and rare.
Provenance: Collection A. Ron Butler RDP, Spink, London, 25 July 2007, lot 657.

129 Proof

(*)

200

(€ 180)



Walch Business Premises in Hobart



6329



6330

- 6329** 4 d. blue, deep shade, wmk. '4', perf. 12 by J. Walch & Sons of Hobart, a fine unused example, well centred and fine, large part og. A very rare stamp. Cert RPSV (1991) Gi = £ 1'200.
6330 10 d. black, wmk. '10', a fine unused horizontal pair, variety "Imperforate", marginal from right of sheet, fresh and fine with large part og. Rare Gi = £ 700.

130

*

300

(€ 265)

131a

*

200

(€ 180)

1871/91, Chalon Heads perforated by the Post Office



6331



6332

- 6331** 1 s. brown-red (vermilion), wmk. '12', perf. 11½, an unused vertical pair of fine appearance, one corner perf. creased, fresh and fine, large part browned og. Cert. RPSL(1947) Gi = £ 600.
- 6332** 6 d. dull claret, wmk. '6', perf. 12, final printing, a superb unused marginal block of sixteen (4 x 4), of excellent fresh colour with the marginal ring markings, couple of small creases but of superb appearance and large part og. with most stamps unmounted og. Rare and most appealing multiple Gi = £ 800+.

Gibbons

Start price
in CHF

Start price
approx. €

140

*

150

(€ 135)

143

田*/**

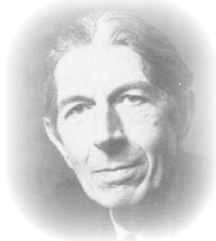
250

(€ 225)

1871/78, Surface Printings from plates made by De La Rue, watermark 'TAS'



6333



Arthur Ronald Butler RDP

- 6333** De La Rue Die Proof for 3 d. value in black on glazed white card, struck with BEFORE HARDENING and dated 'Nov. 19, 1870' at top. Superb and rare.
Provenance: Collection A. Ron Butler RDP, Spink, London, 25 July 2007, lot 660.

146 Proof

(*)

200

(€ 180)



6334



6335

Gibbons

Start price
in CHFStart price
approx. €

- 6334** 3 d. pale red-brown, wmk. TAS, perf. 11½, a very fine unused block of four from top of sheet with Plate Number "5" in margin, all overprinted SPECIMEN (Type 2) in black, some wrinkles, fresh and fine, unmounted og.

146 spec

田**

200

(€ 180)

- 6335** De La Rue Die Proof for 9 d. value in black on glazed white card, struck with BEFORE HARDENING and dated 'Apr. 1, 1871' at top. Small stain at right otherwise superb and rare.

148 Proof

(*)

200

(€ 180)



ex 6336

- 6336** De La Rue imperforate Proofs (6), all ex the Printer's Day Book, with the Proofs attached to the original paper and annotated with dates when the Plates were sent to Hobart, with 4 d. blue and 10 d. mauve optd. SPECIMEN in blue and annotated "Plate Sent Ap. 8. 1870" in red ink; 3 d. red-brown, 8 d. dull purple-brown, 9 d. dull mauve and 5 s. purple all optd. CANCELLED in black or red and sent between "Dec 10. 1870" and "Ap. 17. 71", together with the 1891 File copies for the 1 d. rose (endorsed 'Geranium') optd. SPECIMEN or CANCELLED and the 2 d. green optd. CANCELLED. A superb group, all are illustrated in the 'De La Rue Collection' edited by Frank Walton RDP on Plate 7901. Unique.

Proofs

(*)

1'000

(€ 890)



ex 6337

- 6337** De La Rue Colour Trial Proofs (3) for 9 d. value in yellow, violet and orange, all imperforate on wmk. Crown CC paper, in superb marginal blocks of four, fresh and very fine, superb og.

148 Proofs

田*

300

(€ 265)



6338



6340

Gibbons

| | |
|--------------------|--------------------|
| Start price | <i>Start price</i> |
| in CHF | <i>approx. €</i> |

- 6338** 4 d. buff, wmk. TAS, perf. 12, a fine unused horizontal pair, fresh and fine, large part og. Scarce stamp. Cert. RPS (1989) *Gi* = £ 700.

153

*

200 (€ 180)

6339

- 6339** De La Rue Die Proof for 2 d. value in black on glazed white card, dated '15 JUL 87' at top in black, initialled "GN" in manuscript with AFTER STRIKING at base. Plate 4 of the 2 d. sideface issue was invoiced on September 6, 1887. Some rubbing but fine, a scarce Proof.
- 6340** 1880/91: 1 d. pink, perf. 12, a fine unused corner marginal horizontal pair with Serial Number "41" in margin, the second stamp showing "Wedge Flaw", fresh and fine, large part og. An attractive pair *Gi* = £ 230+.

157 Proof

(*)

200 (€ 180)

164d

*

120 (€ 105)

6341

- 6341** 1886 (Jan 6): De La Rue hand-painted Essay for proposed 2 s. 6 d. design, marked 'A' at upper left, stamp size on tracing paper, 40 x 45 mm., with the Essay drawn in violet including POSTAGE AND REVENUE and TWO SHILLINGS AND SIX PENCE and the head-plate in this colour, the central oval, two triangles at base and TASMANIA being picked out in Chinese white and the perforations in pencil. See the 'De La Rue Collection' edited by Frank Walton RDP, plate 7905. Rare and beautiful, unique.

Essay

(*)

1'000 (€ 890)



6342

Gibbons

Start price
in CHF Start price
approx. €

- 6342** 1886 (Jan 6): De La Rue hand-painted Essay for proposed 2 s. 6 d. design, marked 'D' at lower right and dated 'Jan 6th 86' at top, stamp size on thick card, 73 x 92 mm., with the Essay drawn in violet and purple including TWO SHILLINGS AND SIX PENCE and the head-plate in this colour, the central circles, TASMANIA and POSTAGE & REVENUE being picked out in Chinese white with perforations in pencil. See the 'De La Rue Collection' edited by Frank Walton RDP, plate 7906. Rare and beautiful, unique.

Essay (*) **1'500** (€ 1'335)



6343



6344

- 6343** 1886 (Jan 6): De La Rue hand-painted Essay for proposed 10 s. design, marked 'K' at upper left, larger size on tracing paper, 53 x 54 mm., with the Essay drawn in green including the POSTAGE & REVENUE and head-plate in this colour, the central frame, TASMANIA, floral embellishments and TEN SHILLINGS being picked out in Chinese white and the perforations in pencil. See the 'De La Rue Collection' edited by Frank Walton RDP, plate 7905. Rare and beautiful, unique.
- 6344** 1886 (Jan 6): De La Rue hand-painted Essay for proposed 10 s. design, marked 'M' at upper left, stamp size on tracing paper, 39 x 44 mm., with the Essay drawn in green including the value and head-plate in this colour, the central framee, TASMANIA and POSTAGE & REVENUE being picked out in Chinese white and the perforations in pencil. See the 'De La Rue Collection' edited by Frank Walton RDP, plate 7905. Rare and beautiful, unique.

Essay (*) **1'000** (€ 890)

Essay (*) **1'000** (€ 890)

1889/99, Later Issues



6345



6346

Gibbons

| Start price in CHF | Start price approx. € |
|-----------------------|--------------------------|
| 750 | (€ 670) |
| 500 | (€ 445) |

- 6345** 1889 (Jan 1): ½ d. on 1 d. scarlet, locally surcharged 'Halfpenny' in black, a superb unused positional block of four, second stamp showing variety "al in Half Printed Sideways", fresh and very fine, large part og., the variety unmounted og. Rare and splendid variety Gi = £ 1'900+. *Provenance: Christie's. Melbourne, 10 May 1991, lot 331.*

167a+ 167 田*/**

- 6346** 1891 (Apr-Aug): ½ d. orange, wmk. TAS, a spectacular unused block of twelve (6 x 2) from the base of the sheet, entirely imperforate and each overprinted SPECIMEN in black (Type 2), showing 62 mm. gap between stamps and the base of the sheet with diagonal TAS watermark showing through and complete TASMANIA watermark at base. Without gum and minor creasing but most attractive and rare.

172a spec 田(*)



6347

- 6347** 1891 (June 18): De La Rue hand-painted Essay for the proposed 2½ d. design in lilac and deep lilac, marked 'A' at top and dated 'June 18th 91', largely as accepted, painted on to thick card, 66 x 78 mm., with Key Plate value in red and "2½d." and TASMANIA in Chinese white, with perforations drawn round in pencil. An exquisite and beautiful Essay, unique.

217 Essay

(*)

1'500 (€ 1'335)



6348



6349

- 6348** 1892/99: The bicoloured definitive set of ten values, fresh and fine, all overprinted SPECIMEN horizontally in black, large part og. Scarce Gi = £ 650.
- 6349** 1892/99: Bicoloured £ 1 green & yellow, corner block of four from lower left of sheet, slight crease in margin only, fresh and fine, unmounted og. Rare Gi = £ 2'000+.

Gibbons

Start price
in CHFStart price
approx. €216/225
spec

*

200

(€ 180)

225

田**

750

(€ 670)

1899/1900, Pictorial Issues and Sideface



ex 6350

- 6350** 1899/1912: De La Rue Plate Proofs engraved in black on thick card, the complete set of eight values, all cut down and imperforate, fresh and very fine, a rare and delightful set.

229/236
Proofs

(*)

350

(€ 310)



ex 6351



6352

- 6351** Tasman's Arch 2½ d. deep blue, superb unused blocks of four, each marginal centre-line blocks from left of sheet, Plate 1 and Plate 2, fresh and fine and each showing the small dot above Plate Number, superb og. with most unmounted og. Scarce Gi = £ 175+.
- 6352** 9 d. ultramarine, wmk. V over Crown, perf. 12½, a fine unused block of four in this rare shade, one stamp with light gum crack, large part og. with lower pair unmounted og. Rare Gi = £ 1'700.

Provenance: Christie's, Melbourne, 10 May 1991, lot 343.

232 田**/**

100

(€ 90)

242f 田**/**

500

(€ 445)



ex 6353



6354



6357

- 6353** 1905/12: Russell Falls 4 d. pale yellow- brown, perf. 12½ corner block of four and a perf. 11 block of four; 4 d. orange-yellow shade, with perf. 12½ block of four and the same perf. 11 (these last two blocks are marginal), all four fresh and fine, large part og. A scarce and fine group Gi = £ 600+.

Provenance: Collection J. R. W. Purves, RL, London, 28 July 1981, lot 1392.

- 6354** Lake Marion ½ d. yellow-green, typo, a fine unused block of four from lower left corner of the sheet, compound perf. 11 x 12½, slight stain in lower margin otherwise fresh and fine with stamps unmounted og. Scarce Gi = £ 520+.

Gibbons

Start price
in CHF

Start price
approx. €

247+ 247a+

247d+ 247da

田*/**

200

(€ 180)

249b

田**

150

(€ 135)



6355



6356

- 6355** Pictorial Issue 1905/11: 1 d. rose-red, typo, wmk. Crown over A inverted, perf. 11, a fine vertical strip of four from right of sheet, variety "Imperforate Between Stamp and Margin". the variety affecting all four examples, folded between perfs. and slight spot on gum of one stamp, otherwise fresh and fine, large part og. A very rare strip.

- 6356** 2 d. plum, a fine unused corner marginal block of twenty four (4 x 6), compound perf. 11 x 12½, largely fresh and fine, some perfs. strengthened by hinges but majority fine, large part or unmounted og., a rare large multiple Gi = £ 1'000+.

- 6357** Spring River 3 d. brown, typo, wmk. Crown over A sideways, a fine unused pair from lower left of sheet, compound perf. 12 x 11, with additional row of vertical perforations in the centre of the pair, fresh and fine with large part og., a scarce and unusual pair Gi = £ 425+.

250a var

*

300

(€ 265)

251c

田*/**

200

(€ 180)

253c

*

200

(€ 180)



6358



6359

- 6358** 1906/09: 9 d. blue, wmk. upright, a fine unused corner marginal block of four from lower left of sheet with Plate Number "7" in margin, compound perf. $12\frac{1}{2} \times 11$, fresh and superb, unmounted og. Rare Gi = £ 440+.
- 6359** 1911 (Jan): 2 d. bright violet, a fine unused corner marginal block of six (3 x 2) from upper left of sheet, compound perf. $11 \times 12\frac{1}{2}$, fresh and very fine, minor tear in sheet margin at top and one stamp with natural gum wrinkle, unmounted og. Scarce multiple Gi = £ 780+.

Gibbons

Start price
in CHFStart price
approx. €

256b

田**

150

(€ 135)

259c

田**

200

(€ 180)

Postal Fiscals



6360

- 6360** 1877: De La Rue Master Die Proof for 'Duck-billed Platypus' vignette only in black, dated 'May 18, 1877' and struck with BEFORE HARDENING at top in black. Rare and fine.

F26 Proof

(*)

200

(€ 180)



6361

- 6361** 1880: Duck-billed Platypus 1 d. slate, vertical strip of six used on 1883 cover to London, all tied by 'Launceston / Tasmania' duplexes (Jan 16). Reverse with 'Plymouth / Ship Letter' datestamp (March 11) and London arrival cds in black. Some edge wear and minor imperfections but a rare usage.

F26

✉

200

(€ 180)



6362



6363



6366

Gibbons

Start price
in CHFStart price
approx. €

- 6362** 1900 (Nov 15): 2 s. 6 d. lake, perf. 12, overprinted REVENUE in black with left hand stamp showing variety REVFNUE, a fine unused pair, both creased but not affecting appearance, large part og. Very rare. Cert. RPSL (1984) Gi = £ 1'300.

F32+ F32a

*

350

(€ 310)

- 6363** Duck-billed Platypus 2 d. chestnut overprinted REVENUE in black, a fine unused example with variety "TWO PENCE doubled", fresh and very fine with large part og., an unusual stamp. Signed A. Diena.

F34 var

*

150

(€ 135)



6364



6365

- 6364** Duck-billed Platypus 1 d. blue overprinted REVENUE in black, a fine unused block of six (2 x 3) with interpanneau margin at top, variety "Revenue Overprint Double", fresh and very fine, usual gum wrinkles, unmounted original gum. A rare multiple Gi = £ 1'950+.

F36d

田**

400

(€ 355)

- 6365** Duck-billed Platypus 2 d. chestnut overprinted REVENUE in black, variety "Value Omitted", a fine unused block of four, of good colour, fresh and very fine, large part original gum. With lower pair unmounted original gum. Rare, for a similar multiple see the A. Ron Butler RDP collection, lots 1619 and 1620.

F36 var

田*/**

400

(€ 355)

- 6366** £ 1 green & yellow, overprinted REVENUE in black, an unused horizontal pair, variety Overpinted Double, One Vertically Reading Up", fresh and very fine, unmounted original gum. Extremely rare Gi = £ 950.

Provenance: Christie's, Melbourne, 10 May 1991, lot 400.

F39a

**

250

(€ 225)



6367

- 6367** 2 s. 6 d. lake, Duck-billed Platypus 3 d. chestnut, 10 s. salmon and £ 1 green & yellow, all optd. REVENUE in black, used on "Last Day" cover within Hobart, tied by 'Hobart' datestamps (Nov 30, 1900) in black. Chronically philatelic but absolutely charming usage of these rare adhesives Gi = £ 1'500+.

F32+ F33+

F34+ F39

✉

350

(€ 310)

- 1803** Arrival of 360 convicts and approx. 50 Royal Marines and free settlers in October 1803.
- 1835** Proclamation announcing that „the Settlement called Port Phillip was in the Colony of New South Wales“.
- 1841** First Post Office erected in Melbourne.
- 1850** Separation from New South Wales was anticipated by the local administration. First adhesive stamp issue ‚Victoria Half Lengths‘, lithographed by Thomas Ham, introduced on 1 January 1850.
- 1851** Separation from New South Wales on 1 July 1851.
- 1852** New stamp design for the 2d. the ‚Queen on Throne‘.
- 1854** Lithographic printings of ‚Victoria Half Lengths‘ and ‚Queen on Throne‘ continued by J.S. Campbell & Co. and Campbell & Fergusson.
- 1854/56** New stamp issues produced by local Printers.
- 1856** ‚Queen on Throne‘ 2d. and 6d. printed by Perkins Bacon & Co from steel plates in London.
- 1857** New design of adhesive stamps ‚Emblems‘, printed by Calvert Bros. from electrotpe plates.
- 1860/63** The ‚Beaded Ovals‘, ‚Netted Corners‘ and ‚Laureated‘ issues.
- 1868** Bi-colour printings from two plates.
- 1870** ‚Joubert‘ 2d. and later issues printed from electrotyped plates
- 1884** Fiscal stamps authorised for postal use.



Sullivan Bay, Port Phillip in 1803



First Post Office in Melbourne, 1841

Stampless Mail



6368

Gibbons

Start price
in CHF Start price
approx. €

- 6368** 1841: Cover from Melbourne to Edinburgh, Scotland endorsed 'per Steamer 'Sea Horse' to Sydney', struck with superb framed PAID AT / MELBOURNE in orange-yellow ink, prepaid '7' (pence) in manuscript and struck in transit with PAID SHIP LETTER / Crown / SYDNEY in red (Nov 1). Reverse with oval 'Melbourne / Crown / New S. Wales' in black (Oct 28), octagonal LIVERPOOL / SHIP datestamp in black and '8' (pence) ship fee on front and Edinburgh arrival cds (April 13, 1842). A charming and scarce cover with all markings very fine.

Provenance: Collection J. R. W. Purves, Sale III, RL, Zurich, 13 May 1981, lot 531.



250 (€ 225)



6369

- 6369** 1854: Prepaid cover from La Rochelle, France with cds of despatch (July 29) on front, mailed via Bordeaux and London with 'Paid' transit in red (July 31) with rate '15' décimes on reverse in manuscript. On arrival struck with "14" Swan Hill Butterfly handstamp in red and with three line "ADVERTISED / AND / UNCLAIMED" on obverse with circular SHIP LETTER / FREE / GPO VICTORIA datestamp (Oct 16) in red. A scarce and early cover from France with a very rare instructional handstamp.



300 (€ 265)

1850 (Jan.), "Half Length", lithographed by Thomas Ham



Charles Lathrop Pack



John R. Boker Jr.



6370

Gibbons

Start price
in CHF

Start price
approx. €

6370 1 d. orange-brown, Original State, the famous used block of six (3 x 2), with enormous margins for this issue, of outstanding fresh colour and each stamp neatly cancelled by "15" Butterfly handstamp of Geelong in blue. Imperceptible thin spot, the vertical crease described by Harmers in the Boker sale and Siegel in the 'KL' sale being the impressions of the Butterfly handstamp showing through the soft paper to the reverse. Discussed in Kellow on page 32 "*the greatest Victorian piece extant*" and illustrated on Colour Plate 1. A beautiful, immaculate and extremely rare multiple of great importance to the connoisseur of classic philately. Signed A. Diena $G_i = £ 13'500+$.

Provenance: Collection Charles Lathrop Pack, Harmers, New York, 6-15 Dec 1944, lot 1720.

Collection John Boker, Harmers, London, 14 April 1981, lot 85.

Collection 'K. L.', Siegel, New York, 23 April 1996, lot 64.

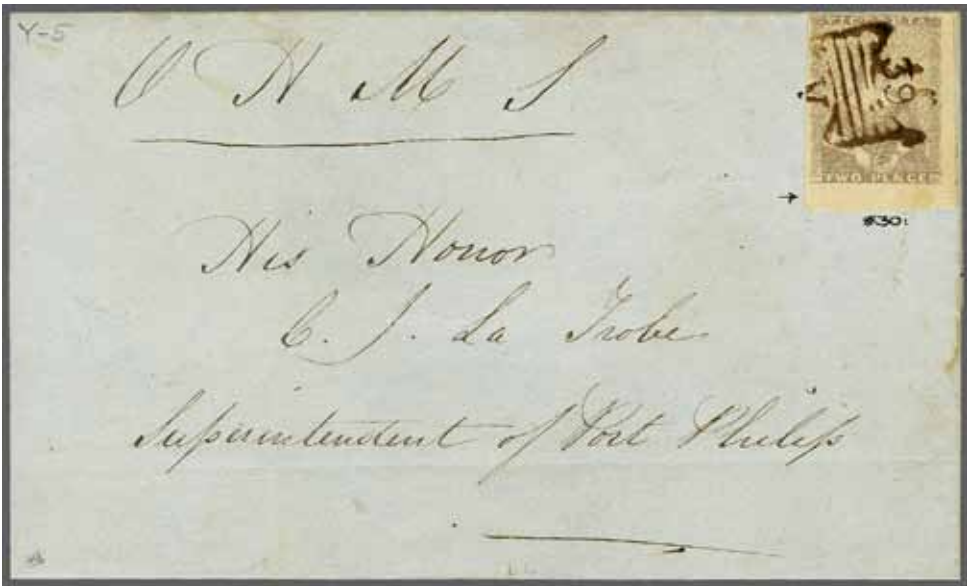
1a

田

30'000 (€ 26'700)



Hobson's Bay from the Williamstown lighthouse ca. 1850



Charles Lathrop Pack

6371

Gibbons

Start price
in CHF Start price
approx. €

- 6371** 2 d. lilac-mauve, Stone A, position 30, a wonderful corner marginal example from the lower right of the original pane of 30, huge margins and imperceptibly touched at upper left, used on 1850 OHMS cover to the Superintendent of Port Phillip, tied by fine strike of "9" Butterfly handstamp of Williamstown in black. Reverse with 'Williamstown / Crown / Port Phillip' datestamp of despatch (Sept 6) and Melbourne arrival of the following day. Exceptional and extremely rare, a delightful cover.
*Provenance: Collection Charles Lathrop Pack, Harmers, New York, 16-18 Feb 1945, lot 996.
Collection J. R. W. Purves, Sale III, RL, Zurich, 13 May 1981, lot 656.*

2 1'000 (€ 890)



6372



6373



6374

- 6372** 1 d. red-brown, 2nd. State, positions 24-25, a used horizontal pair with good to large margins all round, lightly cancelled by "1" Butterfly handstamp of Melbourne in black Gi = £ 900+.
- 6373** 2 d. grey-lilac, Second State, a fine used example with two huge margins from lower right of sheet and clear to just touched at lower left, of excellent colour, well cancelled by "30" Butterfly handstamp of Warnambool in blue Gi = £ 200.
- 6374** 2 d. grey-lilac, Second State, position 2, a fine used example with four good to large margins, of good strong colour, well cancelled by "51" New South Wales numeral obliterator of Deniliquin in black. Rare and extremely attractive usage. Signed Calves Gi = £ 200+.

5 200 (€ 180)

6 150 (€ 135)

6 200 (€ 180)



A glimpse of Port Fairy



6375

Gibbons

Start price
in CHFStart price
approx. €

- 6375** 2 d. grey-lilac, Second State, a used example with four good to large margins, slight rub at upper right, used on 1850 second page of entire letter (a shopping list) to Sydney, neatly cancelled by "23" Butterfly handstamp of Burn Bank in black. Reverse with oval **'PORT FAIRY / Crown / N.S.W'** datestamp (April 30) in black, 'Melbourne / Crown / Port Phillip' transit (May 2) and 'Sydney / Crown / New South Wales' datestamp of arrival (May 10) in black. A rare and most attractive usage showing the acceptance of Victorian stamps in New South Wales.

6

**350** (€ 310)

6376



6377

- 6376** 2 d. dull grey-lilac, Second State, position 11, a fine used example with sheet margin at left and good margins on other three sides, well cancelled by "37" Butterfly handstamp of Melbourne (emergency / Ship Letter cancellation) in black *Gi* = £ 200.
- 6377** 1 d. dull orange-vermilion, Third State, positions 16-17, a fine used horizontal pair, just shaved at base to large margins all round with portion of adjoining stamp at top, each neatly cancelled by very scarce "35" Butterfly handstamps of Upper Glenelg in blue. Rare and most appealing multiple. *Cert. RPSV (2012)* *Gi* = £ 1'300+.
- Provenance: Collection John Barwis, Spink, London, 23 Oct 2012, lot 596.*

6a

150 (€ 135)

8

500 (€ 445)



Charles Lathrop Pack



Louise Boyd Dale



Alfred F. Lichtenstein



6378

Gibbons

Start price
in CHF Start price
approx. €

6378 1 d. reddish brown, Third State, fourth printing, positions 3/7-12/1-6/7-12 (thus the lower two rows form a complete setting), the extraordinary unused block of 19 from the lower left corner of the sheet, of good colour and appearance, horizontally creased and with some aging primarily in margin at base, fresh and very fine, with large part original gum. A spectacular unused multiple, the largest recorded and an Exhibition item of the highest calibre Gi = £ 133'000+.

Provenance: Collection Charles Lathrop Pack, Harmers, New York, 6-15 Dec 1944, lot 1733.

Collection Louise Boyd Dale & Alfred Lichtenstein, Harmers, London, 14 May 1990, lot 214.

12 田* **20'000** (€ 17'800)



6379



6380



6381



6382

Gibbons

Start price
in CHFStart price
approx. €

6379 2 d. blue, Third State, fifth printing, 'White Veils', a fine used example showing an enormous Retouch showing 'VICTORIA!' at top and the entire vertical frameline at right disturbed, lightly cancelled by oval '1/V' obliterator of Melbourne *Gi* = £ 180.

14c

250

(€ 225)

6380 2 d. dull brownish-lilac, Fourth State, Sixth printing, position 25, a fine used example, large margins all round, neatly cancelled by "1" Butterfly handstamp of Melbourne in black. Very scarce so fine. Cert. RPSV (1995) *Gi* = £ 180.

Provenance: Collection John Barwis, Spink, London, 23 Oct 2012, lot 706.

15c

150

(€ 135)

6381 2 d. brown-lilac, Fourth State, Seventh printing, a fine unused example with large margins all round for this printing, of excellent rich colour, unused without gum. A choice example of a very rare stamp *Gi* = £ 5'000.

16b

(*)

750

(€ 670)

6382 2 d. buff, Fourth State, Eighth printing, position 4, a fine used example, clear to large margins all round, cancelled by oval obliterator in black. Scarce stamp in such excellent quality *Gi* = £ 250.

Provenance: Collection John Barwis, Spink, London, 23 Oct 2012, lot 758.

17e

150

(€ 135)

1852/54, Queen on Throne, Recess printed by Thomas Ham



6383

6383 2 d. reddish brown, the famous imperforate Plate Proof block of 47 subjects with additional single example lettered 'ZC' added at lower right, all backed on to linen card paper (with manuscript in pencil 'Owner: Fred R. Ham, Woodstock Avenue, Taringa, Brisbane, 1st July 1956' on reverse), a few small imperfections and scuffs or stains mentioned for full accuracy, but a remarkable and extraordinary multiple of the greatest scarcity.

Provenance: Collection J. R. W. Purves, RL, Zurich, 27 Nov 1980, lot 2038.

18 Proof

田(*)

3'500

(€ 3'115)



J. R. W. Purves



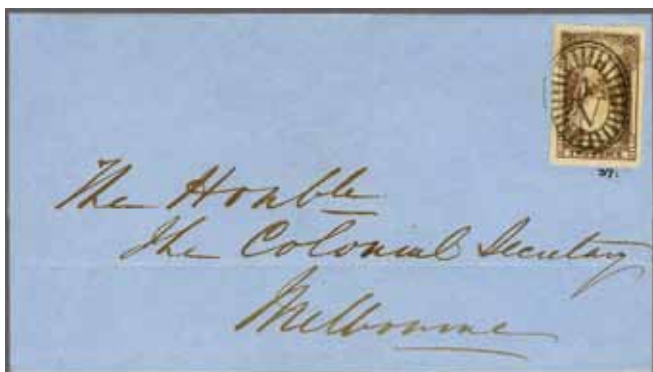
6384

- 6384** 2 d. deep purple-brown, position 35 (KP), a fine used example showing 'Double Print' variety most prominently at base, cancelled in black leaving the variety clear.

Gibbons

Start price
in CHFStart price
approx. €

18b var

100 (€ 90)

6385



6387

- 6385** 2 d. deep purple-brown, position 37 (MR), a magnificent used example of lovely colour, large margins all round, used on 1853 cover within Melbourne, tied by neat "1/V" oval obliterator with 'Melbourne / Crown / Victoria' datestamp (March 2) on reverse. Choice and fine 'drop letter' cover.

Provenance: Collection Charles Lathrop Pack.

18b

**200** (€ 180)

1854 (Jan.), Lithographed by J. S. Campbell & Co., Melbourne



6386



6388

- 6386** Queen on Throne' 2 d. brownish-purple, clear impression, position 46 (WZ), an unused example with large margins all round, marginal from base of sheet, with some minor gum creasing and part og. Scarce Gi = £ 550.

19

*

150 (€ 135)

- 6387** 2 d. purple-black, clear impression, position 4 (DH), used example on 1854 cover to Melbourne cancelled by oval "36" obliterator in black of Bacchus Marsh, with manuscript 'Pd. per Stamp' at right. Reverse with 'Bacchus Marsh / Crown / Victoria' despatch datestamp (Feb 28) and Melbourne arrival, the adhesive being further tied by fine strike of "14" Butterfly handstamp (Departmental usage) in orange ink. Small piece of margin missing and side flaps removed but an unusual cover.

Provenance: Collection Charles Lathrop Pack, Harmers, New York, 6-15 Dec 1944, lot 2098.

Collection Louise Boyd Dale & Alfred Lichtenstein, Harmers, London, 14 May 1990, lot 246.

19b

**200** (€ 180)

- 6388** 2 d. greyish-black, poorer impression, position 32 (GM), a fine unused example with good margins all round, minor corner bend, without gum. Scarce stamp Gi = £ 750.

20a

(*)

150 (€ 135)

1854 (Feb. - June), 'Half Length', Lithographed by J. S. Campbell & Co., Melbourne



6389

Gibbons

Start price
in CHFStart price
approx. €

- 6389** 1 d. orange-red on wove paper, a magnificent unused example with good to large margins on all sides, of excellent fresh colour, unused without gum. Rare and most appealing stamp. Cert. BPA (1983) Gi = £ 3'000.

23

(*)

750

(€ 670)



6390



6391



Baron Philipp von Ferrary

- 6390** 1 d. orange-red on wove paper, positions 13-14-15-16, a delightful used strip of four with large margins on all sides, of excellent fresh colour, second stamp with small defect in bottom margin and thin spot on position 13, otherwise extremely fresh and fine, lightly cancelled in black. A scarce and most attractive multiple Gi = £ 560+.

23

300

(€ 265)

- 6391** 3 d. blue, position 1, an unused example with exceptional margins all round, of vibrant colour and small part og. An extremely rare stamp unused Gi = £ 1'100.

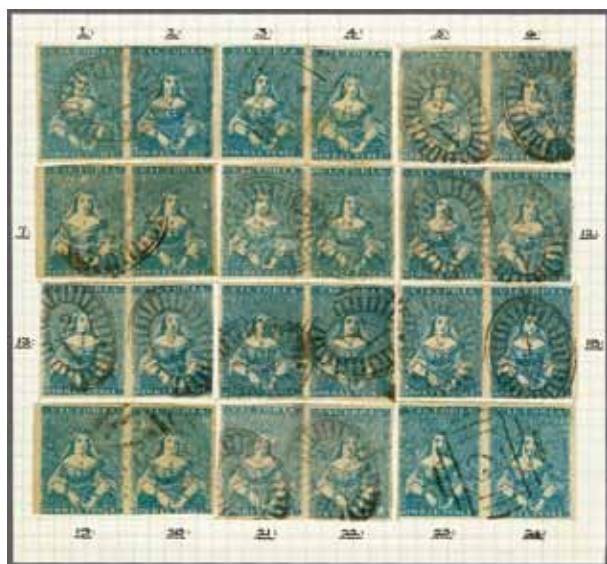
Provenance: Collection Baron Philipp von Ferrary, Sale 8, Paris, 7-9 Nov 1923, lot 463.

24

*

300

(€ 265)



6392



6393

- 6392** 3 d. blue (shades), a fine reconstruction of an intermediate Stone of 24 subjects (6 x 4), the re-plating made up of twelve horizontal pairs, margins fair to superb on all, most lightly cancelled by oval numeral obliterators in black. A fine reconstruction Gi = £ 1'200.

24

300

(€ 265)

- 6393** 3 d. pale blue, positions 12-7, 8-9, two horizontal pairs with large margins all round (position 9 with value at base weak - reading 'THREL RENCE'), used on small 1854 cover to Dundee, Scotland tied by '1/V' oval obliterators of Melbourne in black. 'Melbourne / Crown / Victoria' datestamp at left in black (July 27) and reverse with London cds (Oct 6) and Dundee arrival in green where charged '1s.' to pay in manuscript. The envelope with small cleaned area at lower right but a charming and scarce franking.

24

✉

500

(€ 445)

1854, 1 Shilling, Lithographed by J. S. Campbell & Fergusson



*Duke and Duchess of Cornwall and York
attended the opening of the first Parliament
in Melbourne in 1901*



6394

Gibbons

Start price in CHF Start price approx. €

6394 1854/1901: Composite Proof strip of five subjects for the 1 shilling value (138 x 33 mm.), printed in black and grey on somewhat creased surface glazed paper, with first Proof at left showing "POSTAGE / ONE SHILLING" unadopted wording, second Proof with accepted "VICTORIA / ONE SHILLING" (both the items with wording have been hand-painted), and the three further Proofs all without wording in the circular surround. Just two or perhaps three impressions (ref. Rod Perry) are believed to have been struck from the Original Die on the occasion of the Duke of Cornwall & York's (later King George V) visit to Australia in 1901. A splendid Proof and of great rarity.
Provenance: Collection Henry Harvey, RL, London, 11 May 1976, lot 340.

25 Proof (*) **3'500** (€ 3'115)



6395

| | | Gibbons | | Start price in CHF | Start price approx. € |
|------|---|---------|---|-----------------------|--------------------------|
| 6395 | 1854 (July 6): 1 s. blue, imperforate, a superb unused vertical strip of three in a clear pale shade, large margins all round for a multiple of this stamp, fresh and very fine, large part og. Minor gum bend mentioned for complete accuracy but not affecting the beautiful appearance in any way. An extremely rare and most attractive multiple. Cert. BPA (1990) Gi = £ 3'000+. | 25 | * | 1'000 | (€ 890) |

1854/57, 'Half Length', Lithographed by Campbell & Fergusson



6396



6397



6398

| | | | | | |
|------|--|-----|-----|-----|---------|
| 6396 | 1 d. (bright) brick-red, a magnificent unused example of phenomenal rich colour, with missing 'E' in 'ONE' at base, clear even margins all round, fresh and very fine, unused without gum. Extremely rare. Signed Georg Bühler Gi = £ 3'250. | 26a | (*) | 750 | (€ 670) |
| 6397 | 1 d. brick-red on poorer quality paper, positions 6 and 20, two clear to large margined used examples, one with small corner crease, each lightly cancelled in black and most attractive Gi = £ 220. <i>Provenance: Collection Gary Diffen, Spink, London, 14 Nov 2007, lots 298 and 300.</i> | 26a | | 120 | (€ 105) |
| 6398 | 1 d. dull rose-red on poorer quality paper, an unused example, of excellent colour and with large margins all round, paper with some natural airholes, fresh and fine, part og., but with repaired lower right corner Gi = £ 3'750. | 27a | * | 400 | (€ 355) |



6399



6400

Gibbons

| | |
|--------------------|--------------------|
| Start price | Start price |
| in CHF | approx. € |

6399 1 d. brick-red shade on poorer quality paper, Stone 2, Seventh printing, four single examples in a bright shade, margins touched to huge, all used on 1855 cover, side flaps missing, mailed to Sydney, NSW tied by oval '1/V' obliterations of Melbourne in black. Reverse with oval 'Melbourne / Victoria' despatch (Oct 16) and 'Ship Letter / Sydney' arrival cds (Oct 19) in black. The cover with imperfections but a generally fine and attractive franking.

26a

**400** (€ 355)

6400 1 d. rose-pink shade on poorer quality paper, Stone 3, Eighth printing, position 16, showing 'Creased Transfer' lithographic flaw with Queen's face crushed at right, a lightly used example leaving the transfer flaw clear.

27b

100 (€ 90)

Baron Philipp von Ferrary



Maurice Burrus



6401



6402



John R. Boker Jr.

6401 1 d. rose shade on poorer quality paper, Ninth printing, positions 1-2/7-8, a used block of four with large margins on three sides, just touched at lower left, of vivid fresh colour, neatly cancelled by circular "97" barred obliterator in black. Usual minor airholes in paper and one or two ironed bends but a delightful and most attractive multiple of great scarcity. Signed Holcombe.

Provenance: Collection Baron Philipp von Ferrary, Sale 8, 7-9 Nov 1923, lot 431.

Collection Maurice Burrus, RL, London, 11 Feb 1964, lot 574.

28a

**750** (€ 670)

6402 1 d. 'dried' pink shade on poorer quality paper, Ninth printing, positions 17-18/23-24, a wonderful used block of four of vibrant colour and with huge margins all round, typical natural airholes, neatly cancelled by two strikes of oval '2/V' obliterator of Geelong in black. Exceptional and rare. Signed A. Diena.

Provenance: Collection John Boker, Harmers, London, 14 April 1981, lot 164.

Collection Rod Perry, DF, Zurich, 16-21 Nov 1987, lot 20189.

28b

**750** (€ 670)



6403

Gibbons

Start price
in CHFStart price
approx. €

- 6403** 1 d. dull red-brown shade on poorer quality paper, Stone 4, Eighth printing, positions 6-17-18-19, a fine used horizontal strip of four, just touched on position 6 otherwise with ample to fine margins all round, lightly cancelled in black. A charming and scarce multiple.

28c

250 (€ 225)

Baron Philipp von Ferrary



6404



6405

- 6404** 3 d. bright blue on poorer quality paper, Stone B, Seventh printing, positions 21-22, an unused horizontal pair in a fresh shade on poorer quality paper, with margins close to large (huge on position 22), two minor ironed creases otherwise fresh and very fine, unused without gum, one of just four recorded unused pairs of this stamp and the largest recorded unused multiple Gi = £ 4'500+.

Provenance: Collection Baron Philipp von Ferrary, Sale 8, Paris, 7-9 Nov 1923, lot 480.

29

(*)

1'000 (€ 890)

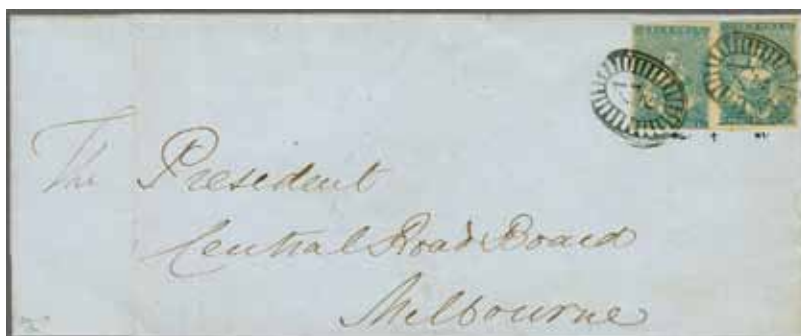
- 6405** 3 d. blue, Second State, a fine used block of four in a deep shade, large even margins all round and imperceptibly touched at lower left, cancelled by four strikes of the oval 'V' obliterator in black. A scarce and most attractive multiple Gi = £ 280+.

29

田

200 (€ 180)

Charles Lathrop Pack



6406



John R. Boker Jr.

- 6406** 3 d. greenish-blue, a fine horizontal interpanneau pair, Pack types 6 and 1 with large margin between, positions 24-19, large margins all round, used on 1854 cover from Geelong to Melbourne tied by '2/V' oval obliterations of Geelong in black. Reverse with 'Geelong / Crown / Victoria' datestamp (Oct 24) and Melbourne arrival (Oct 25). File folds well away from the fine adhesives, a very scarce cover.

Provenance: Collection Charles Lathrop Pack, Harmers, New York, Dec 6-15 1944, lot 1998.

Collection John Boker, Harmers, London, 14 April 1981, lot 140.

29a

✉

300 (€ 265)



6407

Gibbons

| | |
|-------------|-------------|
| Start price | Start price |
| in CHF | approx. € |

- 6407** 3 d. greenish blue on poorer quality paper, Stone D, Ninth printing, positions 11-12, an unused horizontal pair of fine appearance with rich colour, large margins all round, hinge thin not detracting from appearance, partial og. A scarce and attractive pair. Signed A. Diena Gi = £ 3'800.

31a

*

750 (€ 670)

6408

- 6408** 3 d. deep blue on poorer quality paper, Stone D, Ninth printing, positions 9-10-11-12-7, a fine horizontal strip of five with ample to large margins all round, minor thin and vertical crease in the gutter margin between position 12 and 7, lightly cancelled by circular (probable) '23' numeral obliterator of Buninyong in black. Lovely appearance and a very scarce multiple.
Provenance: Collection Charles Lathrop Pack, Harmers, New York, 6-15 Dec 1944, lot 2073.
Collection Louise Boyd Dale & Alfred Lichtenstein, Harmers, London, 14 May 1990, lot 234.

31c

200 (€ 180)

6409

- 6409** 3 d. deep blue on poorer quality paper, Stone D, Ninth printing, positions 5-6, a horizontal pair, margins just touched at top right to large all round on each, used on 1856 cover addressed to 'George Smith, formerly of Geelong, Pawnbroker, but now it is believed an Innkeeper in Sydney', tied by oval "2/V" obliterator of Geelong. Reverse with 'Geelong / Crown / Victoria' despatch (Sept 7), Melbourne transit and front with ADVERTISED / UNCLAIMED handstamp in black (and docket number '42' in manuscript). Some file folds away from adhesives, a scarce and interesting cover.
Provenance: Collection Charles Lathrop Pack, Harmers, New York, 6-15 Dec 1944, lot 2067.
Collection Louise Boyd Dale & Alfred Lichtenstein, Harmers, London, 14 May 1990, lot 244.

31c

✉

300 (€ 265)

1854/55, Typographed from woodblocks



6410



ex 6412



6414

Gibbons

Start price
in CHF Start price
approx. €

- 6410** 6 d. dull orange, imperforate, a fine used sheet marginal example used on 1855 cover to Launceston, Tasmania tied by oval "2/V" obliterator and by framed SHIP LETTER - INWARDS FREE datestamp in red (Nov 15). Reverse with Geelong despatch (Nov 12), Melbourne transit and SHIP LETTER - INWARDS FREE diamond datestamp in red. Minor soiling but an attractive cover.

32



100 (€ 90)



6411



6413



6415

- 6411** 6 d. dull orange, imperforate, a fine unused example in a deep shade, good to large margins all round, small gum skip on reverse otherwise fresh and fine with large part og. Gi = £ 550.
- 6412** 6 d. orange (shades), imperforate, single example used on 1856 cover, flap missing, from Melbourne to Paris endorsed 'per Kent' at top, tied by circular "1" numeral of Melbourne and rated '8' décimes un arrival (Sept 5), and a horizontal pair, scissor cut at base, used on March 1857 entire letter to Paris endorsed 'Per European, via Marseilles' similarly cancelled and charged '5' décimes due on arrival, the latter signed A. Diena and G. Lamy. A scarce pair - neither listed by Palmer in 'Pre-UPU Victorian Mail'.
- 6413** 'Too Late' 6 d. lilac & green, a fine example in a bright vibrant shade, used on small piece with overlapped 1854 6 d. dull orange tied by oval "2/V" obliterator of Geelong in black. A charming piece Gi = £ 250+.
- 6414** 'Registered' 1 s. rose-pink & blue and 6 d. dull orange, fine examples used on registered cover to England endorsed 'per Kent via Melbourne', tied by scarce oval "50/V" obliterator of Port Fairy. Reverse with SHIP LETTER / FREE / G.P.O. VICTORIA datestamp in red (Sept 12) and London and Marlow (Nov 29). Obverse of cover with opening tear at right and manuscript '6' (pence) split rate correctly altered to 3d. to pay. Scarce.
- 6415** 2 s. bluish-green on yellow, imperforate, an unused example with large margins all round, insignificant corner bend in margin only at top right, minor aging and some gum cracking, otherwise fresh and fine with large part og. A great rarity, there are believed to be only a dozen (but probably less) known unused examples, this being one of the finest Gi = £ 3750.

Provenance: Collection Tomasini.

Collection Rod Perry, DF, Zurich, 16-21 Nov 1987, lot 20294.

32a



180 (€ 160)

32a



150 (€ 135)

33+ 32a



100 (€ 90)

34+ 32a



250 (€ 225)

35



800 (€ 710)

1855/56, "Queen on Throne", Lithographed by J. S. Campbell and Fergusson



6416

Gibbons

| | |
|--------------------|--------------------|
| Start price | Start price |
| in CHF | approx. € |

- 6416** 'Queen on Throne' 2 d. brown-purple, early impression from over-used Stone, positions 39-40 (OT-PU), an unused pair on yellowish poor quality paper, one stamp slight stain and creasing, large part og. Despite faults, a very scarce unused multiple from this printing Gi = £ 1'000+.

37a

*

200 (€ 180)

1854/56, "Queen on Throne", Recess Perkins, Bacon & Co, London



6417

- 6417** 'Queen on Throne' Perkins Bacon sunken Die Proof (53 x 65 mm.), similar to the central vignette of the 1 d. value, with VICTORIA inscribed on lower step and laurel leaf surround, printed in black on thick card paper, signed at base "Humphrys" in pencil (extremely unusual and rare thus). The design was based on a watercolour drawing by Edward Henry Corbould. Scarce and most appealing, almost identical to the Die Proof offered (lot 2068) in the first Purves sale. Rare.

Provenance: 'Rarities', Spink, 6 June 2007, lot 1120.

40 Proof

(*)

1'500 (€ 1'335)

6418

- 6418** 1 d. in bright red and 1858 6 d. in violet, two superb imperforate Die Proofs by Perkins Bacon, imperforate on unwatermarked white wove paper, produced especially for the 1872 South Kensington Exhibition. Rare and beautiful. Cert. BPA (1993).

| |
|--------|
| 40+ 73 |
| Proofs |

(*)

1'000 (€ 890)

South Kensington Exhibition, 1872



6419



6420 Gibbons

- 6419** 1 d. yellow-green, wm. Star, a fine unused horizontal strip of three, close to large margins all round, of fresh bright colour and large part og Gi = £ 900+.
- 6420** 1 d. yellow-green, wm. Star, a fine unused block of four, margins ample to large all round, of good colour, third stamp showing clear re-entry in the value tablet at base, fresh and very fine, large part og. Gi = £ 1'200+.

40

*

Start price
in CHFStart price
approx. €**250**

(€ 225)

40

田*

400

(€ 355)



View of Melbourne ca. 1855



6421

- 6421** 1 d. yellow-green, wm. Star, a wonderful horizontal strip of six, margins just grazed to large all round with prtios of four adjoining stamps at top, of excellent colour, used on 1856 cover to Gravesend, England cancelled by circular "1" numeral obliterations of Melbourne in black. Reverse with 'Melbourne' despatch in black (Dec 15) and Gravesend arrival in green (March 10, 1857), front with London cds in red and handstruck '3' split rate accountancy marking in red. A delightful cover, almost certainly the finest of this issue.
- Provenance: Corinthila sale 72, 23-28 September 1985, lot 7392.*

40

✉

1'500

(€ 1'335)



6422

Gibbons

Start price
in CHF Start price
approx. €

- 6422** 1 d. yellow-green, wmk. Star, shaved at left otherwise with large margins all round, used with November 1856 Half-Length 3 d. Prussian blue, shaved at base but with portion of adjoining stamp at left, used on 1857 entire letter to Beechworth tied by circular "1" numeral obliterator of Melbourne in black. Reverse with Melbourne despatch (Jan 19) and 'Beechworth / Victoria' arrival (Jan 22) datestamp in black and fine (and very early) "James J. Blundell & Co. / Melbourne" blue wafer seal. A scarce combination and a charming entire.

Provenance: Collection J. R. W. Purves, RL, Zurich, 13 May 1981, lot 708.

40+ 30

**350** (€ 310)

1857, Later Issues



6423



6425

- 6423** **Emblems Issue** 1857 (Feb 18): 1 d. yellow-green, imperforate, wmk. Large Star, a very fine used horizontal strip of four with ample to huge margins all round, lightly cancelled by circular "60" numeral obliterator of Maldon in black. A choice multiple.

41

100 (€ 90)

6424



Ballarat Post Office

- 6424** 1857 (Feb 18): 1 d. deep green, imperforate, wmk. Large Star, with 1854/57 Campbell & Fergusson 3 d. greenish blue with large margins all round, used on 1857 cover to Creswick, sharing circular "5" numeral obliterator of Ballarat in black. Reverse 'Ballarat / Crown / Victoria' despatch in black (Aug 11) and 'Creswick's Creek / Crwon / Victoria' arrival (Aug 12). An attractive cover.

41a+ 29

**200** (€ 180)

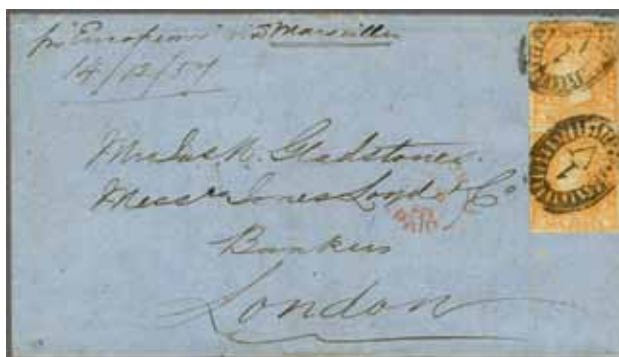
- 6425** 1857 (Aug-Sept): 1 d. yellow-green, rouletted 7-9 by GPO clerks in Melbourne, a fine used horizontal pair cancelled by circular "1" of Melbourne. Scarce. Ex Tommy Allen. Cert. RPSL (1939) Gi = £ 220+.

46

100 (€ 90)



6426



6427

- 6426 Woodblock Issue** 1857 (Aug-Sept): 6 d. orange-yellow, rouletted 7-9 by GPO clerks in Melbourne, a horizontal pair used on 1858 cover to England, separated by scissors horizontally, neatly tied by circular "1" numeral obliterator of Melbourne. Ampt Hill arrival cds on reverse. The stamps lifted for checking and hinged back in place. A scarce stamp on letter. Cert. RPSL (1942).

- 6427** 6 d. dull orange, serpentine roulette 10-10½ by Calvert on all four sides, two single examples from a vertical pair used on 1857 second sheet of entire letter endorsed 'per European' to London, tied by oval "1/V" obliterations in black of Melbourne. London arrival cds (Feb 8) in red on front. A very rare issue on cover.

Gibbons

Start price
in CHFStart price
approx. €

53b

**200**

(€ 180)

58

**250**

(€ 225)



6428

- 6428 Emblems Issue** 1858 (June 1): 4 d. rose on smooth vertically laid paper, rouletted 5½-6½, used on 1859 entire letter to Belfast tied by circular "27" numeral obliterator in red, with corresponding 'Caramut / Crown / Victoria' datestamp at left (Feb 21) in same colour. Reverse with 'Belfast / Crown / Victoria' datestamp in black (Feb 25). File fold well away from scarce cancellations.

71

**150**

(€ 135)



6429

- 6429 Recess by Perkins Bacon** 1856: 'Queen on Throne' 6 d. Die Proof on India paper, printed in black, cut down and mounted on card, 39 x 43 mm., with wonderful depth of engraving, tiny scuff below 'S' of 'SIX' at base mentioned for full accuracy only and not detracting from the lovely appearance of a fine and rare Proof of which only five examples are recorded. Cert. BPA (1982).

73 Proof

(*)

1'250

(€ 1'115)



6430



World Exhibition in Paris 1867
Victoria, Australia Exhibit



6431

- 6430** Plate Proof for 6 d. value in black, imperforate on white paper without watermark, a sheet marginal block of twelve (3 x 4), showing excellent depth of engraving, position 36 (third stamp, top row) showing signs of retouching. Margins touched to large all round, minor crease in margin only, a scarce multiple with only one sheet of 240 subjects struck.
- 6431** Die Proof for 6 d. value in deep violet, imperforate on white thin (almost pelure) paper without watermark, prepared by De La Rue from the Perkins Bacon plates for the 1867 Paris Exhibition. Narrow margins but of vivid deep colour and similar to the Proof offered in the first Purves sale. Rare and particularly fine Proof. Cert. Robson Lowe (1977).

| Gibbons | | Start price in CHF | Start price approx. € |
|----------|------|-----------------------|--------------------------|
| 73 Proof | 田(*) | 350 | (€ 310) |
| 73 Proof | (*) | 750 | (€ 670) |



6432

- 6432** 1858, 6 d. blue, wmk. Star, rouletted 5½-6½, a single example used on 1859 registered cover to Locarno, Switzerland with horizontal pair of 1859 1 s. pale blue, perf. 12, the 6 d. folded over top of cover, all tied by "13" numeral obliterations with, on reverse, 'Daylesford / Victoria' despatch datestamp July 12) in black. Thence via Melbourne and London with red transits (Sept 19) and manuscript '2/-' accountancy credit applied in red ink. CHARGE in black on front and Paris 'Bureau Centrale' cds in red, Basel transit and Locarno (Sept 23) arrival on reverse. Some aging but scarce, #100 in the Palmer 'Pre-UPU Destination Mail census.
- Provenance: Heinrich Köhler, sale 238, 8-12 Feb 1983, lot 1399.*

| | | | |
|--------|---|------------|---------|
| 73+ 81 | ✉ | 200 | (€ 180) |
|--------|---|------------|---------|



6433



6434

Gibbons

Start price
in CHF Start price
approx. €

- 6433** 1859: 1 s. blue, perf. 12 by Robinson, a single and vertical pair used with 1862 6 d. grey on registered 1862 cover from Chiltern (Sept 22) to Locarno, Switzerland, tied by circular "28" numeral obliterations in black. Fine REGISTERED / MELBOURNE in red of transit (Sept 24), oval 'PD' and 'Registered / London' datestamp in red (Nov 20) and manuscript accountancy split '2/-' in red ink, thence via Calais with CHARGÉ in red on front and rate box in black on reverse. Small piece missing from flap but with Locarno arrival cds (Nov 24). Listed by Palmer in 'Pre-UPU Destination Mail', census #150. A fine and scarce franking.

81+ 106

**300** (€ 265)

- 6434** **Woodblock Issue** 1859 (May): 2 s. dull bluish green on pale yellow in a horizontal pair and single 1863 4 d. rose-pink, used on 1864 registered cover to Locarno, Switzerland tied by circular "25" numeral obliterations of Hepburn. Reverse with 'Hepburn' despatch cds (Aug 23) with 'Registered / Melbourne' datestamp in red on front (Aug 24), thence via Suez and Marseille (Oct 15) with CHARGÉ applied on front in black. Rate box and Locarno arrival cds (Oct 18) on reverse. Cover #174 in the Ben Palmer 'Pre-UPU Destination Mail' census. An extraordinary and rare cover.

Provenance: Plumridge & Co., London, sale 879, 6-14 March 1930, lot 696.

Collection Rod Perry, DF, Zurich, 16-21 Nov 1987, lot 20299.

82+ 110b

**500** (€ 445)

6435



6436



6437

- 6435** **Beaded Oval Issue** 1860/66: Proof in black for the 4 d. value, imperforate on wove surfaced paper. See first Purves sale (lot 2116) for a similar Proof, which is thought to have been struck on the occasion of the visit of the Duke of Cornwall & York (later King George V) in 1901. Fine, attractive and very rare with just two, perhaps three, Proofs taken.

89 Proof

*

500 (€ 445)

- 6436** 3 d. maroon on T. H. Saunders paper, wmk.d in words, perf. 13 variety, the famous unused block of four, of outstanding rich colour and superb large part browned og. Extremely rare and probably the sole block extant Gi = £ 1'400+.

Provenance: Collection J. R. W. Purves, RL, Zurich, 27 Nov 1980, lot 2124.

Collection Rod Perry, DF, Zurich, 16-21 Nov 1987, lot 20364.

- 6437** 1863 (Sept): 1 d. pale green, wmk. numeral, on De La Rue paper, perf. 12, a fine unused block of four of good colour, diagonal crease, large part og. A scarce stamp in a multiple

Gi = £ 520+.

91a

**350** (€ 310)

104b

**150** (€ 135)

1863/73, "Laureated" series



6440



6438



Arthur Hind



6439



6443

6438 De La Rue paper, 1 d. deep green, perf. 13. a fine unused block of nine (3 x 3) with part selvage from edge of sheet at left, of brilliant fresh colour, minor gum creasing, large part og. A delightful and scarce multiple *Gi* = £ 800+.

6439 4 d. deep rose, perf. 12, the famous example with un-printed tablet at top or missing 'VICTORIA', a used example cancelled by circular "3" numeral obliterator of Castlemaine in black. Extraordinary error and very rare: illustrated in the Robson Lowe Encyclopaedia on page 229. Cert. RPS (1963) *Gi* = unlisted.

Provenance: Collection Arthur Hind, Harmers, London, 2-4 July 1934, lot 526.

Collection J. R. W. Purves, RL, London, 9 Sept 1981, lot 242.

6440 Emergency printing on De La Rue paper, 3 d. lilac, wmk. '8', perf. 13, an unused block of four of rich deep colour, fresh and very fine, large part og. *Gi* = £ 1'000+.

Gibbons

Start price
in CHF Start price
approx. €

108da

田*

200

(€ 180)

110 var

300

(€ 265)

118

田*

250

(€ 225)



6441



6442

6441 **Woodblock Issue** 1865 (Sept): 2 s. dark blue on greenish paper, perf. 12, a single example used on large 1867 registered cover to Chesterfield, UK neatly tied in black with fine oval REGISTERED in red and 'Melbourne' despatch cds (Sept 26) in black at left. The adhesive with small closed tear at right and the cover with file folds but an extraordinary quadruple rate franking.

Provenance: DF Auction, Geneva, 29 Nov-3 Dec, 2005, lot 31654.

129a

☒

500

(€ 445)

6442 **Laureated Issue** 1867/81: 1 d. green, perf. 12, Bell 1873 9 d. pale brown on pink, 1873/87 2 d. dull mauve, perf. 12 single and horizontal strip of five, all used on 1874 cover to Paris tied by 'Melbourne / Victoria' duplexes (May 19) in black. Slight file fold crosses the 9 d. value which has, along with the 1 d. value been lifted for checking wmk., but a delightful and colourful franking for the 1/10 d. rate for under ½ ounce.

Provenance: Köhler, sale 225, 11-14 Oct 1978, lot 3602.

142c+ 172+

183b

☒

200

(€ 180)

6443 Emergency printing, 1 d. green, Saunders paper, wmk. 'SIX PENCE' in words, perf. 13, an unused example centred to left, trivial aging on reverse at top, fine part og. A very rare stamp *Gi* = £ 950.

162

*

200

(€ 180)

1873/87, New Design by William Bell



J. R. W. Purves



6444

Gibbons

Start price
in CHFStart price
approx. €

6444 Essay by William Bell for ½ bantam value, handpainted in deep rose-red and pale rose on card (56 x 38 mm.), extremely close to the issued design, initialled "J. P. A." by J. P. Atkinson, the stamp printer. Exceptionally rare and beautiful Essay.

Provenance: Collection J. R. W. Purves, RL, Zurich, 27 Nov 1980, lot 2157.

Collection Richard Stevenson, Spink, London, 6 April 2006, lot 1324.

176 Essay

(*)

1'000

(€ 890)



6445



6446

6445 Engraver's Die Proof by William Bell for the 1 d. value printed in red on very thin slightly greyish pelure paper, 25 x 30 mm., showing the incomplete Die without figure of value at lower right corner and with additional rectangular frame surround. The completion of the Die was done on the premises of the Post Office to ensure no further impressions could be made. See Geoff Kellow 'Stamps of Victoria' page 194, this Proof being similar to Purves lot 2166. Small stain at top but a fragile, charming and very rare Proof.

177 Proof

(*)

500

(€ 445)

6446 Essay for the proposed 6 d. value by William Bell, unadopted, with head plate vignette hand-painted in shades of pink, affixed to card, 39 x 45 mm., the frame hand-painted in shades of red and carmine. Delightful Essay which bears some resemblance to the issued 9 d. adhesive, see Geoff Kellow 'Stamps of Victoria' page 189. Unique.

Provenance: Collection J. R. W. Purves, RL, Zurich, 27 Nov 1980, lot 2161.

Essay

(*)

1'000

(€ 890)



6447

6447 1873/81: Essays (2) by William Bell for the 2 s. design, both imperforate, one in brownish-purple and the other in black, with "2/-" in upper left corner only and the other three corners blank (the issued stamp had the value in all four corners), each on very thin paper, the black example with border surround in black, but with some aging. A scarce pair.

190 Essays

(*)

350

(€ 310)

1884, Stamp Statute



6448

6448 3 d. mauve, wmk. V over Crown sideways, a fine unused example of fine delicate colour, merest trace of aging on two top perforations, fresh and fine, large part og. Rare Gi = £ 1'700.

| Gibbons | | Start price in CHF | Start price approx. € |
|---------|---|-----------------------|--------------------------|
| 221 | * | 350 | (€ 310) |

1884, Stamp Duty



6449

6449 1879: Die Proof for 1 s. 6 d. value in black on cream wove paper, 43 x 50 mm., engraved by Arthur Williams of Sands & MacDougall, typographed at the Victorian Stamp Printer's. Unfinished State of the Die with letters 'J' and 'L' missing from the lower corners, these letters standing for Charles Jackson and Ludwig Lang who designed much of the 1879 Stamp Duty series. The sole recorded unfinished Proof of this value, see Geoff Kellow 'Stamps of Victoria' page 228. Scarce and most attractive.

6450 1884: Essay for the 15 s. value, designed by Charles Jackson and Ludwig Lang, handpainted on card, 76 x 89 mm., in reddish-purple shades, with FIFTEEN SHILLINGS in black and VICTORIA picked out in Chinese white, with hand drawn surround in pencil; similar to the design adopted for the 1 d. value. See Geoff Kellow 'Stamps of Victoria' page 227. Beautiful and unique.

Provenance: Collection J. R. W. Purves, RL, Zurich, 27 Nov 1980, lot 2255.



6450

| | | | |
|-----------|-----|-------|-----------|
| 236 | (*) | 400 | (€ 355) |
| 241 Essay | (*) | 1'500 | (€ 1'335) |



6451



6452



6453

6451 1879: Die Proof for 2 s. value in deep yellow-brown on thick wove cream paper, 36 x 57 mm., engraved by Arthur Williams of Sands & MacDougall, typographed at the Victorian Stamp Printer's. Unfinished State of the Die with letters 'J' and 'L' missing from the top corners, these letters standing for Charles Jackson and Ludwig Lang who designed much of the 1879 Stamp Duty series. Eight Die Proofs are recorded of this value, see Geoff Kellow 'Stamps of Victoria' page 240. Scarce and most attractive.

6452 Die Proof for 5 s. value in pale brown on cream wove paper, 35 x 50 mm., engraved by Arthur Williams of Sands & MacDougall, typographed at the Victorian Stamp Printer's. Unfinished State of the Die with letters 'J' and 'L' missing from the left and right of the 'Victoria Stamp Duty' frame, these letters standing for Charles Jackson and Ludwig Lang who designed much of the 1879 Stamp Duty series. Seven Die Proofs are recorded of this value of which three are in this colour, see Geoff Kellow 'Stamps of Victoria' page 241. Scarce and most attractive.

6453 1884/96: £ 2 bright blue, wmk. V over Crown sideways, perf. 12½, a superb unused example of excellent colour, fresh and very fine, superb large part og. Rare Gi = £ 2'000.

Gibbons

Start price
in CHFStart price
approx. €

258 Proof

(*)

200

(€ 180)

260 proof

(*)

200

(€ 180)

276

*

350

(€ 310)



6454

6454 1884/1900: £ 25 yellow green, £ 50 dull lilac-mauve and £ 100 crimson, perf. 12½, wmk. V over Crown sideways, upright on the £ 100, the set of three values all with margins all round, each with "Specimen" in manuscript ink in red or black (£ 100). A magnificent and extremely rare set in superb condition, fresh and very fine, superb og. A dramatic and extremely rare set.

283+ 284+

285 Spec

*

2'000

(€ 1'780)



6455



6456

Gibbons

Start price in CHF Start price approx. €

- 6455** 1884: Die Proof for the Nash 2 s. 6 d. value, imperforate and printed in violet on blue card (not as issued - note the colour block behind the Queen's head at right and the blocks of colour towards lower corners which were altered), together with the issued 2 s. 6 d. brown-orange, wmk. V over Crown, perf. 12½, fresh and fine, large part og. The Proof illustrated in Kellow 'Stamps of Victoria' on page 253. Scarce.
Provenance: Collection J. R. W. Purves, RL, Zurich, 27 Nov 1980, lot 2181.

292+ 292
Proof */(*)

300 (€ 265)

- 6456** Stamp Duty overprint in blue on 3 d. yellow-orange, a fine unused block of nine, marginal from right of sheet, fresh and very fine, superb og. with four stamps unmounted og. Gi = £ 600+.

308 田*/**

150 (€ 135)

Later Issues incl. High Values



6457



6458

- 6457** 1890: Die Proof for the 1 d. chestnut in close to the issued colour, on cream wove paper, 68 x 113 mm., engraved by Samuel Reading and typographed at the Victorian Government printing Office, with manuscript 'X' at top in ink. The stamp was issued to coincide with 1 d. postage for inland mail and was loosely based on the 1 d. black. A rare Proof with just six known in various colours, all come from the estate of the engraver and were discovered in 1952.
- 6458** 1887: Die Proof in red for 1 s. 6 d. design, imperforate on card paper, 26 x 31 mm., designed and engraved by Charles Naish and typographed at the Victorian Government printer's in Melbourne. The sole recorded Proof in this colour.

313 Proof (*)

300 (€ 265)

322 Proof (*)

350 (€ 310)



Queen Victoria



6459



6459A



6459B



6459C

- 6459** 1886/87: £ 6 yellow & pale blue, wmk. 'V over Crown' sideways, perf. 12½, a fine appearing unused example of good centering and colour, slight mark removed from face of stamp, diagonal crease unapparent on face and regummed, nevertheless a most attractive example of an extremely rare stamp. Certs. APS (1980) and BPA (1991) Gi = £ 12'000.
- 6459A** 1886/89: £ 7 rosine & black, wmk. V over Crown sideways, perf. 12½, an unused example of excellent rich colour, slightly blunted perforations at base and regummed, nevertheless a marvellous example of an extremely rare and most elusive stamp. Certs. APS (1980), BPA (1991) Gi = £ 13'000.
- 6459B** 1886/90: £ 8 mauve & brown-orange, wmk. V over Crown upright, perf. 12½, an unused example of splendid colour, centred to base, regummed, nevertheless a marvellous example of an extremely rare and most elusive stamp. Certs. APS (1980), BPA (1991) Gi = £ 14'000.
- 6459C** 1886/90: £ 9 apple-green & rosine, wmk. V over Crown sideways, perf. 12½, an unused example of excellent fresh colour, centred to left, regummed, nevertheless a marvellous example of an extremely rare and spectacular stamp. Certs. APS (1980), BPA (1991) Gi = £ 14'000.

Note: Geoff Kellow records just three unused examples of each of these high values (£6-£9) as offered above, including the set in the collection of Her Majesty Queen Elizabeth II. Despite imperfections, these high values demonstrate the excellence of the printer's art and remain great rarities for both the Victoria and the British Commonwealth collector.

Gibbons

Start price
in CHFStart price
approx. €325 (*) **2'000** (€ 1'780)326 (*) **3'000** (€ 2'670)327 (*) **3'000** (€ 2'670)328 (*) **3'000** (€ 2'670)



6460

Gibbons

Start price
in CHF Start price
approx. €

- 6460** 1886/96: High Values: £ 6 yellow & pale blue, £ 7 rosine & black, £ 8 mauve & brown-orange and £ 9 apple-green & rosine, unused, perf. 12½, all wmk. Crown over V sideways except for the £ 8 value which is upright, overprinted "Specimen." in black, all of delightful fresh appearance although the £ 8 has a few soiled perfs. at top, fresh and fine with part og. Scarce.

325/328
spec

*

400 (€ 355)



6461

- 6461** 1900 (Jan 12): Boer War Patriotic Fund, the set of two values 1 d. (1 s.) olive-brown and 2 d. (2 s.) emerald green, unused, each diagonally overprinted 'SPECIMEN.' in violet (Samuel type NA2) upon receipt from the UPU by the Natal Post Office. A fine and unique set. Cert. BPA (1981).

374/375
spec

*

200 (€ 180)



6462

- 6462** 1901 (Jan 29): 1 s. yellow, a superb unused block of eight, marginal from top of sheet of excellent centering and vivid colour, superb og. with four stamps unmounted og. Scarce and attractive Gi = £ 640+.

381 田*/**

150 (€ 135)



6463

Gibbons

Start price
in CHFStart price
approx. €

- 6463** 1901: £ 1 carmine-rose, a used example on large piece with 1 d. dull red, 4 d. bistre, 6 d. emerald and 5 s. rose-red & pale blue all tied by 'Post Office / Stock Exchange' datestamps (March 3, 1905) with framed LATE FEE handstamp in black at left. Some creasing and imperfections but rare.

Provenance: Collection J. R. W. Purves, RL, London, 14 Jan 1981, lot 1048.

399

△

150

(€ 135)



6464



6466



6465

- 6464** 1901/10: Die Proof for £ 1 value in carmine on card, 62 x 68 mm., State 1 with two dashes below beard, some minor scuffing but most attractive and of great rarity.
- 6465** 1901/10: Die Proof for £ 1 value in salmon, on wove paper, 83 x 66 mm., State 2 with line vertical below the beard, some minor scuffing and a corner crease but of great rarity.
- 6466** 1901/10: Die Proof for £ 2 value in dull ultramarine, on yellowish wove folded paper 63 x 101 mm., State 2 with base of beard pointed, some minor scuffing and bends but of great rarity.

431a Proof

(*)

1'000

(€ 890)

431 Proof

(*)

1'000

(€ 890)

432 Proof

(*)

1'000

(€ 890)

Postage Due



6467



J. R. W. Purves

Gibbons

Start price
in CHFStart price
approx. €

6467 1890/94: Die Proof for the 10 d. value, in pale blue & black printed on thick card (39 x 43 mm.). Minor spotting on reverse of no significance, exceptionally attractive and unique.

Provenance: Collection J. R. W. Purves, RL, Zurich, 27 Nov 1980, lot 2217.

Collection Rod Perry, DF, Zurich, 16-21 Nov 1987, lot 20484.

D7 Proof

*

1'000

(€ 890)

Incoming Mail



View of Glasgow



6468

6468 1847/54: Great Britain embossed 6 d. dull lilac, two examples with just touched to large margins all round, used on 1855 entire letter from Glasgow to Melbourne, Victoria tied by obliterators in black. Reverse with 'Port Glasgow' despatch (Aug 16), Liverpool cds (Aug 18) in green and SHIP LETTER / FREE / GPO VICTORIA datestamp in red (Nov 17). Front with scarce "5" Butterfly handstamp of Ovens in black, however the addressee presumably unfound as struck alongside with "48" Butterfly handstamp in red of the Melbourne Dead Letter Office. Minor imperfections but a rare and most attractive entire.

Provenance: Collection Rod Perry, DF, Zurich, 16-21 Nov 1987, lot 20013.

59

500

(€ 445)