

Thursday, 31 May 2018, 9:00 h

FROM  
AUSTRALIAN STATES TO THE  
COMMONWEALTH OF AUSTRALIA  
1850-1960

The 'BESANÇON' Collection  
(part II)



*The First Fleet entering Port Jackson on January 26, 1788*

# NEW SOUTH WALES

**1788** A fleet of 11 ships with convicts, soldiers and others arrived at Botany Bay in January 1788. Captain Phillip proclaimed the new colony. The first settlement was made at Sydney. The area was known as New South Wales with Sydney as the administrative centre and included all territory east of longitude 135° East.

**1803** The Sydney Gazette of 10 July 1803 first mentions Postal services.

**1825** „Act to Regulate the Postage of Letters in New South Wales“ under Governor Sir Thomas Brisbane.

**1838** „Act to Provide for the Conveyance and Postage of Letters“ under Governor Sir Richard Bourke introduced letter charges according to weight and distance carried.

A cheap local Sydney Post is established by the issue of prepaid embossed stamped envelopes.

**1848/49** Proposals for a uniform rate of postage followed by the „Act to Establish a Uniform Rate of Postage and to consolidate and Amend the Law for the Conveyance and Postage of Letters“ which took effect from 1 January 1850. The Act authorised the issue of adhesive postage stamps.

**1850** The first stamps „The Sydney Views“ were issued. They were engraved locally on copper plates. The 1d. by Robert Clayton, the 2d. by John Carmichael and the 3d. by H.C. Jervis. All three copper printing plates wore rapidly and were variously re-engraved by H.C. Jervis.

**1851** The second locally produced „Laureated“ issue, engraved by John Carmichael and H.C. Jervis on steel plates (1d., 2d. plate I, 3d.) and on copper plates (2d. plate II, 6d., 8d.)

**1852** Stamps to prepay postage made obligatory.

**1854** The third „Diadem“ issue made from engraved steel plates made by Perkins, Bacon in London.

**1856** „Laureated“ Sixpence Registration Stamp.

**From 1862** New issues printed from typographed plates printed by De La Rue in London.

**1879** First appearance of O.S. overprinted Official Stamps



*First Fleet Entering Botany Bay*



*Government House in Sydney*



*Custom House and Circular Wharf in Sydney*

Essays



3001

**3001** 1850: Carmichael Essay for proposed 6 d. 'Laureated Crown' and 1 s. 'Lion & Crown' se-tenant Essays, imperforate on thick wove paper (61 x 37 mm.), printed in royal blue. Fresh, fine and very scarce.  
*Provenance: Collection George Ginger, RL, London, 5-6 December 1945, lot 492.*

Gibbons		Start price in CHF	Start price ca. AU \$
Essay	(*)	200	(270)



3002

**3002** 1850: Alfred Clayton 'Sydney View' Essays, composite photo-lithographic facsimile of the original Essay which is housed in the Tapling Collection in the British Library, comprising reproductions of the 1d. and 3d. Essays which are mounted on paper and endorsed '*The form and colour are approved, but the execution is very far from satisfactory and must be greatly improved before the contract can be sanctioned*'. This facsimile was produced by Alfred van Dyck, some time before the originals were sold by him to Tapling and prior to Thomas Tapling's death in 1891. The blank space in between contained the Essay for the 2d. value which was purchased for and remains in the Royal Collection. We record just one other example of this reproduction (copy with the lot), ex Sir Gawaine Baillie, sold at Sotheby's, Melbourne in July 2005, lot 812, which was not as fine as the example offered here.

Essay	(*)	1'000	(1'350)
-------	-----	-------	---------

### 1850 (Jan.) One Penny, Sydney View, Plate I, no clouds



3003



3004



3005

Gibbons

Start price  
in CHFStart price  
ca. AU \$

- 3003** 1 d. deep orange-red, Proof from Plate I, position 2, with large margins all round and part of sheet margin at top, of excellent rich colour, merest trace of thin in margin only, superb and rare.

*Provenance: Collection George Ginger, RL, London, 5-6 December 1945, lot 8.*

- 3004** 1 d. carmine-lake on soft yellowish paper, Plate I, a fine used example with clear margin at right and large margins on three sides, position 1 on the sheet of 25 subjects, lightly cancelled in black. A fine and attractive stamp. Cert BPA (1980) Gi = £ 550.

- 3005** 1 d. reddish rose, Plate I, position 8, a fine large margined example of good delicate colour, cancelled by 'water strike' obliterator in brownish ink. A fine stamp. Cert. RPSL (1958) Gi = £ 475.

1 Proof

(\*)

**300**

(405)

1

**180**

(245)

3

**150**

(205)



3006



3007



3008

- 3006** 1 d. reddish rose, Plate I, positions 13-14, a fine used horizontal pair, good to large margins all round, lightly cancelled by "44" numeral obliterator of Yass. An exceptional and most attractive multiple Gi = £ 950+.

*Provenance: Collection 'España', Harmers, London, 23 March 1984, lot 2014.*

- 3007** 1 d. brownish red, Plate I, positions 14-15, a delightful horizontal pair in a deep resonant shade, tied to small piece by bold strikes of "3" numeral obliterator of Windsor with oval 'WINDSOR / Crown / NEW S. WALES' datestamp above (Feb 5, 1850). Fresh and extremely fine. Cert. BPA (1990) Gi = £ 1'000+.

- 3008** 1 d. pale red on hard bluish paper, Plate I, position 14, a fine used example with clear to good margins all round, neatly cancelled by "89" numeral obliterator of Kempsey in black. Signed Köhler Gi = £ 475.

3

**400**

(540)

4

△

**400**

(540)

5

**150**

(205)





Baron Philipp von Ferrary



3009

		Gibbons	Start price in CHF	Start price ca. AU \$
<b>3009</b>	1 d. pale red on hard bluish paper, Plate I, position 21, a fine unused example, marginal from lower left corner of the sheet with large margins on the other two sides, of rich colour and large part og. Merest trace of gum thin at top otherwise a magnificent example of a very rare stamp Gi = £ 11'000. <i>Provenance: Baron Philipp von Ferrary, Sale 3, Paris, 5-7 April 1922, lot 5.</i>	5	*	<b>3'500</b> (4'725)

### 1850 (Aug.), One Penny Plate I re-engraved by Henry C. Jervis (commonly termed Plate II with clouds)



3010



3011



3012



3013

<b>3010</b>	1 d. vermilion on hard toned paper, Plate II, position 17, a fine used example of good rich colour, good margins all round, neatly cancelled by "81" numeral obliterator of Warwick, Moreton Bay District (now Queensland) in black Gi = £ 375.	7		<b>200</b> (270)
<b>3011</b>	1 d. vermilion on hard toned yellowish paper, Plate II, position 4, a fine used example with large margins all round, cancelled by complete Sydney mute obliterator in black, slightest of scuffs at top otherwise fresh and very fine. Signed Ferchenbauer; cert. BPA (1980) Gi = £ 375.	7		<b>150</b> (205)
<b>3012</b>	1 d. dull carmine on hard toned paper, Plate II, position 2, a fresh unused example in a fine rich shade, good to fine margins all round, unused without gum. Signed Herbert Bloch; cert. RPSV (1978) Gi = £ 9'000.	8	(*)	<b>1'000</b> (1'350)
<b>3013</b>	1 d. crimson-lake on hard greyish blued paper, Plate II, position 11, a fine used example with four margins, close at right, showing clear overall "Double Print", lightly cancelled in black leaving the design clear. An unusual stamp Gi = £ 375+.	9 var		<b>150</b> (205)



Hotel in Wee Waa



3014



Baron Philipp von Ferrary



Maurice Burrus

Gibbons

Start price	Start price
in CHF	ca. AU \$

- 3014** 1 d. crimson-lake on hard greyish blued paper, Plate II, positions 5/10/15/20, a vertical strip of four with margins all round, position 15 with plate variety 'No Clouds', tiny pinhole in fourth stamp otherwise extremely fine and attractive, all cancelled by fair strikes of uncommon "72" numeral obliterator of Wee Waa in black. A delightful and rare multiple that has graced some of the most outstanding collections ever formed. Signed Bühler; cert. RPSV (1998) Gi 9+12c = £ 1'875+.

*Provenance:* Collection Baron Philipp von Ferrary, Sale 3, Paris, 5-7 April 1922, lot 43.

Collection Maurice Burrus, RL, London, 11 Feb 1964, lot 59.

Collection 'España', Harmers, London, 23 March 1984, lot 2025.

Collection John S. White, Spink, London, 22 May 1997, lot 78.

9+ 9c

**1'000** (1'350)

3015

- 3015** 1 d. dull carmine on hard greyish blued paper, Plate II, positions 19-20, a fine used horizontal pair, good to generous margins all round, one stamp with natural iron spot in paper, lightly cancelled in black Gi = £ 750+.

*Provenance:* Collection Charles Lathrop Pack, Harmers, New York, Dec 1944 or 1945.

11

**200** (270)



Charles Lathrop Pack



3016



3017

- 3016** 1 d. brownish-red on hard greyish blue paper, Plate II, positions 11-12-13, a horizontal strip of three, margins clear to large all round, of fine colour, tied to small piece cancelled by mute obliterations in black with 'Paid Ship Letter / Crown / Sydney' in red (Dec 16, 1851). A fresh and fine multiple. Signed A. Diena, P. Holcombe *Gi* = £ 1'050+.
- Provenance: Collection Charles Lathrop Pack, Harmers, New York, 6-15 Dec 1944, lot 979.*
- 3017** 1 d. carmine on hard greyish blue laid paper, Plate II, position 9, a fine used example with some doubling of impression and showing portion of paper-maker's watermark, of rich colour with large margins all round, cancelled by light numeral obliterator in black. A very scarce stamp so fine. Signed Saatchi *Gi* = 700+.

Gibbons

Start price  
in CHF

Start price  
ca. AU \$

12

△

**350**

(475)

13 var

**250**

(340)

### 1850 (Jan.), Two Pence, Plate I, vertical-lined background



3018



3019



3020

- 3018** 2 d. greyish-blue, Plate I, early impression, positions 2-3-4, a remarkable top marginal horizontal used strip of three with ample margin at left and huge on three sides, each cancelled by "59" numeral obliterations of Dungog in black. Position 2 with minor thin of no significance and not detracting from the appearance of a delightful and extremely rare multiple *Gi* = £ 1'650+.
- Provenance: Collection George Ginger, RL, London, 5 Dec 1945, lot 121.*
- Collection 'V. P. Manwood', Siegel, New York, 8 Nov 1995, lot 4090.*
- 3019** 2 d. greyish blue, late intermediate impression, Plate I, position 22, a fine used example with good margins all round, cancelled solely (contrary to regulations) with large part 'Paid Ship Letter / Crown / Sydney' datestamp in red. Trace of thin but rare and most unusual *Gi* = £ 325.
- Provenance: Collection Alfred Lichtenstein & Louise Boyd Dale, Harmers, London, 14 May 1990, lot 27.*
- 3020** 2 d. greyish blue, later impression, Plate I, position 14-15, a fine used horizontal pair, large margins all round, position 14 with "Double Impression", some aging and small thin in margin only at top, cancelled by "48" numeral obliterations of Tarcutta in black. A fine and unusual pair *Gi* = £ 380+.
- Provenance: Collection Dr. W. R. D. Wiggins, RL, Zurich, 26 Nov 1981, lot 1598.*
- Collection 'España', Harmers, London 23 March 1984, lot 2126.*

15

**1'200**

(1'620)

16b

**150**

(205)

17

**200**

(270)



3021



3022

- 3021** 2 d. dull blue, later impression, Plate I, position 24, a fine unused example from the lower right corner of the sheet of 24 subjects, of good rich colour and impression, small trace of original gum. A very rare stamp unused. Cert. BPA (1979) Gi = £ 7'000.
- 3022** 2 d. greyish-blue, Plate I retouched, a fine used example with enormous margins all round, used on small piece and tied by "14" obliterator of Orange. Fresh and fine with full dividing lines on three sides and the line at top only just touched. A superb stamp. Cert. BPA (1955) Gi = £ 300.

Gibbons

Start price  
in CHFStart price  
ca. AU \$

18

\*/(\*)

**1'200**

(1'620)

19

△

**120**

(160)

**1850 (April - July), Two Pence, plate entirely re-engraved by Henry C. Jervis  
(plate II - horizontal-lined background)**



3023



3024



3025

- 3023** 2 d. indigo, Plate II, an Early Impression with large margins and of rich colour, neatly cancelled by "3" numeral obliterator of Windsor in black. A fine example of this scarce stamp. Signed G. Bolaffi, A. Diena. Cert. RPSL (1945) Gi = £ 350.
- 3024** 2 d. indigo, Plate II, position 2, a fine used example in a deep shade, large margins all round showing 'Fan as in Plate III, but without shading and inner circle bisects fan' plate variety, neatly cancelled by "67" numeral obliterator of Muswellbrook in black Gi 24b = £ 600.
- 3025** 2 d. indigo, Plate II, position 10 and showing 'Pick & Shovel' omitted, an Early Impression with good even margins and of rich colour, neatly cancelled by "62" numeral obliterator of Morpeth in black. A scarce stamp Gi = £ 600.

21

**120**

(160)

21b

**200**

(270)

21f

**200**

(270)



3026

- 3026** 2 d. lilac-blue, Plate II, position 10, early impression in this extremely scarce shade, showing 'Pick and Shovel omitted' plate variety, large even margins all round, lightly cancelled in black. An exceptional stamp Gi 24f = £ 600/Gi 22f = £ 2'600.  
*Provenance: H. R. Harmer private sale (1938).*

22f

**500**

(675)





3027

Gibbons

Start price  
in CHF      Start price  
ca. AU \$

- 3027** 2 d. grey-blue, Plate II, position 6, early impression, an unused example of outstanding appearance in a fresh shade, good margins on all sides, fresh and fine unused, without gum. A most attractive example of this rarity. Cert. BPA (1950) Gi = £ 12'000.  
Provenance: Collection 'V. P. Manwood', Siegel, New York, 8 Nov 1995, lot 4126.

23 (\*) **2'500** (3'375)



3028



3029

- 3028** 2 d. grey-blue, Plate II, position 11, early impression, a very fine used example with large even margins all round, cancelled by fine strike of Victoria Butterfly handstamp No. 37 (Melbourne) in black. Exceptional and scarce Gi = £ 300+.
- 3029** 2 d. bright blue, Plate II, position 4, early impression, a fine used example with large even margins all round, showing 'No Whip and inner circle intersects fan' plate variety, cancelled by bold strike of "47" numeral obliterator of Tumut in black. Scarce and fine. Signed Holcombe Gi = £ 600.

23 **200** (270)

24d **200** (270)



3030

- 3030** 2 d. bright blue, Plate II, position 10, early impression, a very fine used example with large even margins all round, with plate variety 'Pick and Shovel omitted', used on 1850 OHMS cover from Sydney to the District Council in Paterson tied by obliterator in black. Reverse with 'Sydney / Crown / New South Wales' cds (July 19). Some edge wear but a fine and scarce cover. Signed A. Diena.  
Provenance: Collection John F. Seybold.  
Collection Charles Lathrop Pack, Harpers, New York, 6-15 Dec 1944, lot 1048.

24f  **500** (675)



3031



3032

Gibbons

Start price  
in CHFStart price  
ca. AU \$

- 3031** 2 d. bright blue, Plate II, position 13, early impression, a very fine used example with large even margins all round, with plate variety 'CREVIT omitted', cancelled by numeral "54" with typical '4' reversed of Carrington. Slightly aged at top otherwise fresh and very fine. A scarce stamp Gi = £ 950.
- 3032** 2 d. dull blue, Plate II, position 24, intermediate impression, a very fine used example with large even margins all round, cancelled by bold "9." numeral obliterator with figure reversed of Bathurst. A fine and appealing stamp Gi = £ 170.

24g

**250**

(340)

25

**150**

(205)



3033

- 3033** 2 d. dull blue, Plate II, positions 13, worn impression, a fine example with good margins all round, showing 'CREVIT omitted' plate variety, used on 1850 cover to Sydney tied by over-inked "63" numeral obliterator of East Maitland in black. Reverse with Sydney arrival cds (July 5) in black. Trivial age spots on front panel but a scarce entire.

*Provenance: Collection 'España', Harmers, London, 23 March 1984, lot 2207.*

25g

**400**

(540)



3034



3035



3036

- 3034** 2 d. Prussian blue, Plate II, position 2, worn impression, a very fine used example with good margins all round, showing 'Fan as in Pl. III, but without shading, inner circle intersecting with fan' plate variety clearly, cancelled by "7" numeral obliterator of Penrith. Signed H. R. Harmer Gi = £ 425.
- 3035** 2 d. dull grey-blue, Plate II, positions 13-14, worn impression, a very fine used horizontal pair with large margins all round, position 13 showing 'CREVIT omitted', lightly cancelled by numeral obliterator in black leaving the plate variety clear. Tiny thin in margin on right hand stamp but a fine appearing multiple Gi = £ 850+.
- 3036** 2 d. Prussian blue, Plate II, worn impression retouched at base, position 4, a fine large margined used example cancelled by full strike of scarce Victoria Butterfly No. 37 handstamp in black. Fresh and fine, a lovely stamp Gi = £ 325.

26b

**150**

(205)

26g+ 26

**200**

(270)

27

**200**

(270)

# 1850 (Sept.), Two Pence plate re-engraved a second time by Henry C. Jervis (plate III)



Louise Boyd Dale



3037



Alfred Lichtenstein

Gibbons

Start price  
in CHF      Start price  
ca. AU \$

- 3037** 2 d. ultramarine, Plate III, positions 8-9, a superb used top marginal pair in a greyish shade, large margins all round with trivial aging and bend in top margin of no importance, well cancelled by "48" numeral obliterations of Tarcutta in black. A delightful multiple  $G_i = £ 450+$ .  
*Provenance: Collection Charles Lathrop Pack, Harpers, New York, Dec 1944 or 1945.*  
*Collection Alfred Lichtenstein & Louise Boyd Dale, Harpers, London,*  
*14 May 1990, lot 41.*

29

**200** (270)



3038

- 3038** 2 d. ultramarine, Plate III, a fine four margined example used on 1850 entire letter from Scone to Newcastle, the adhesive with contemporary scissor cut in margin only at base, tied by "68" numeral obliterator (water strike) with corresponding 'Scone / Crown / New S. Wales' datestamp at left (Dec 30) in same ink lacking the linseed oil. Reverse with very scarce 'NEWCASTLE / N.S.W. / P. OFFICE' intaglio seal handstamp in black. Exceptional and attractive cover.

29



**500** (675)



3039

- 3039** 2 d. ultramarine, Plate III, position 8, earliest impression, a superb sheet marginal example in a rich deep shade with large margins all round, used on 1850 O.H.M.S. cover to Brisbane, tied by bold strike of the Sydney mute obliterator in black. Reverse with oval 'Brisbane / New S. Wales' oval despatch datestamp (Oct 10) in black and Sydney arrival cds (Oct 14) in black. A superb cover in premium quality.

29



**750** (1015)

# 1851 (Jan.), Two Pence plate re-engraved a third time by Henry C. Jervis (plate IV)



3040

Gibbons

Start price  
in CHFStart price  
ca. AU \$

- 3040** 2 d. Prussian blue, on hard bluish grey wove paper, Plate IV, position 2, marginal at top and with large to ample margins all round, of good strong colour, cancelled by "90" numeral obliterator of Grafton. A scarce and attractive stamp *Gi* = £ 170.

32

**100**

(135)



3041



View of Sydney Harbour

- 3041** 2 d. bright blue, on hard bluish grey wove paper, Plate IV, positions 18 and 21, two examples marginal from base of sheet with good margins all round, affected by aging and vertical file fold, used on 1851 cover from Sydney to London endorsed 'p. Blackwall' tied by Sydney mute obliterations in black. Circular 'Paid Ship Letter / Crown / Sydney' datestamp at right (March 14) in red and charged '8' (pence) for Ship Letter fee. Reverse with Sydney datestamp in black (same day) and London cds (June 14) in red. Rare.

*Provenance: Collection 'España', Harmers, London, 23 March 1984, lot 2279.*

33

**300**

(405)



3042



3043

- 3042** 2 d. Prussian blue, on stout yellowish vertically laid paper, Plate IV, position 12, a fine large margined used example showing 'Hill Unshaded' plate variety clearly, cancelled by indistinct numeral obliterator in black *Gi* = £ 425.

*Provenance: Collection 'España', Harmers, London, 23 March 1984, lot 2293.*

35a

**150**

(205)

- 3043** 2 d. Prussian blue, on stout yellowish vertically laid paper, Plate IV, position 17, a fine unused example, clear impression, with four even margins all round, showing 'No Waves' plate variety clearly. Fresh and fine unused with some og. Rare *Gi* = £ 8'500.

35e

\*

**1'000**

(1'350)



# 1851 (April), Two Pence plate re-engraved a fourth time by Henry C. Jervis (plate V)



3044



3045

Gibbons

Start price  
in CHFStart price  
ca. AU \$

- 3044** 2 d. ultramarine on greyish paper, Plate V, position 6 on the sheet of 24 subjects, a fine unused example with large margins all round and of fresh colour, a most attractive example of this scarce stamp. Signed Bloch. Cert. Friedl (1979) Gi = £ 8'500.

36

(\*)

**1'500**

(2'025)

- 3045** 2 d. ultramarine, on hard greyish wove paper, Plate V, position 9, a fine used example showing 'No Clouds' plate variety, large margins all round, boldly cancelled by "32" numeral obliterator of Berrima in black. A fine and scarce stamp Gi = £ 180.

36

**100**

(135)



3046

- 3046** 2 d. ultramarine, on hard greyish wove paper, Plate V, a superb large margined used example on Evans correspondence 1851 entire letter from Tarcutta to Albury, tied by "48" numeral obliterator in black. Reverse with oval 'Tarcutta / Crown / New S. Wales' datestamp (June 23) in black and faint Albury arrival. A charming and scarce entire.

36

✉

**350**

(475)



3047

- 3047** 2 d. deep dull blue, on hard greyish wove paper, Plate V, a large margined used example on 1851 cover from Parramatta to Sydney, in a resonant shade, cancelled by poor strike of numeral obliterator in black with scarce MID-DAY / MAIL oval handstamp alongside. Reverse with 'Parramatta / Crown / New S. Wales' oval despatch datestamp in black and Sydney (July 4) arrival.

37

✉

**250**

(340)

### 1850 (Jan.), Three Pence plate engraved by Henry C. Jervis



3048

Gibbons

Start price  
in CHFStart price  
ca. AU \$

- 3048** 3 d. yellow green, on soft yellowish wove paper, position 2 on the sheet of 25 subjects, a fine used example with large margins all round, cancelled by "68" numeral obliterator of Scone. A fine stamp Gi = £ 325.

39

**150**

(205)



*General Post Office of Sydney*



3049

- 3049** 3 d. myrtle green, on soft yellowish wove paper, a superb used example, position 5 on the sheet, with huge regular margins all round, tied to 1850 cover to Hobart, Tasmania by bold strike of the Sydney mute obliterator in black. Oval 'Paid Ship Letter / Crown / Sydney' datestamp at left (April 13) in red and manuscript '4' (pence) for Ship fee. Reverse with framed SHIP LETTER (April 21) arrival in black. Tiny tear at top of cover well away from adhesive but a charming and very fine cover. Cert. BPA (1981).

40

**500**

(675)



Alfred H. Caspary



Lars Amundsen



3050

Gibbons

Start price  
in CHF      Start price  
ca. AU \$

**3050** 3 d. myrtle green, on soft yellowish wove paper, position 14 on the sheet of 25 subjects used with 1850 1 d. reddish rose, Plate I, horizontal pair, positions 21-22, on the famous cover to Van Diemen's Land, all tied by fine strikes of "61" numeral obliterations of Gresford. The adhesives all with four margins, the right hand 1 d. with slight surface scuff at top, otherwise all are superb. Front with 'Paid Ship Letter / Crown / Sydney' datestamp in red (May 8) and manuscript '4' (pence) for Ship fee. Reverse with 'Gresford / Crown / New S. Wales' despatch datestamp (May 6), 'Patterson / Crown / New S. Wales' oval transit datestamp (May 6) both in black and framed SHIP LETTER in black applied on arrival (June 8). A magnificent and extremely attractive cover for the connoisseur of the Sydney Views. Cert. P. Holcombe.

*Provenance:* Collection Alfred H. Caspary, Harmers, London, 6-9 Oct 1958, lot 14.

Collection Lars Amundsen, SG, London, 6-8 Dec 1967, lot 321.

Collection 'España' Harmers, London, 23 March 1984, lot 2023.

40+ 3

**7'500** (10'125)



3051

Gibbons

Start price  
in CHFStart price  
ca. AU \$

- 3051** 3 d. yellow green, on greyish wove paper, a four margined used example tied to 1851 cover from Sydney to Stokesley, Yorkshire endorsed per 'Strathedine' at lower left, tied by mute obliterator in black. Manuscript '8' (pence) ship fee on front and circular 'Paid Ship Letter / Crown / Sydney' datestamp in red (Dec 16). Reverse with London cds in red (June 1) Northallerton and Stokesley cds's (June 2) in blue. Minor aging to envelope but an attractive cover.

42

**300**

(405)



3052



3053

- 3052** 3 d. deep yellowish green, on yellowish horizontally laid paper, position 12, a very fine used example in a rich vibrant shade with large margins all round, boldly cancelled by "78" numeral obliterator of Cassilis. Exceptional and scarce. Cert. RPSL (1946) Gi = £ 500. Provenance: Collection E. R. Slade Slade, Harpers, London, 3-4 April 1979, lot 264.

43e

**200**

(270)

- 3053** 3 d. yellowish green, on greyish horizontally laid paper, positions 18-19, a used horizontal pair with ample even margins all round, showing the 'No Whip' plate varieties on each stamp, cancelled by Sydney mute obliterations. A very scarce positional multiple Gi = £ 1'700.

43ef

**350**

(475)



3054

- 3054** 3 d. emerald-green on greyish laid paper, a fine sheet corner marginal example, position 1, used on 1851 cover with Laureated 2 d. greyish blue, margins just clear to large, addressed to Barnsley, Yorkshire tied by "64" numeral obliterations of West Maitland in black (the numeral '4' characteristically reversed). Obverse with 'Paid Ship Letter / Crown / Sydney' in red (Oct 9) and manuscript '8' (pence) Ship fee. Reverse with 'W. Maitland' despatch in black (Oct 6) and London cds of transit (Feb 14) in red with Barnsley arrival cds in blue of the same day. A splendid and rare mixed issue franking.

43+ 53

**1'000**

(1'350)



## 1851 (Dec.), Laureated One Penny



3055



3057

Gibbons

Start price  
in CHFStart price  
ca. AU \$

- 3055** 1 d. carmine on thick yellowish paper, a fine used example with three large margins and ample at base, lightly cancelled in black Gi = £ 300.

44

**100**

(135)



3056

3058

- 3056** 1 d. carmine on thick yellowish paper, a fine used example with three large margins and just clear at right, used on 1852 entire letter to Darling Point, neatly tied by Sydney mute obliterator with framed '6 / O CLOCK' handstamp in black alongside. Reverse with 'Sydney / New South Wales' datestamp (Oct 25) in black. File fold at top not affecting the appearance of a most attractive entire.

*Provenance: Collection 'España', Harmers, London, 23 March 1994, lot 2398.*

44

**200**

(270)

- 3057** 1 d. carmine on thick yellowish paper, position 7, the sensational used example, marginal from top of sheet (this indicating exact position easily), full margins all round and large portion of adjoining stamp at right, showing 'No leaves right of SOUTH' plate variety, lightly cancelled in black leaving the plate variety clearly apparent. Tiny repair to margin in lower left corner otherwise a magnificent stamp and most probably the finest appearing used example of this variety Gi = £ 500.

*Provenance: Collection Charles Lathrop Pack, Harmers, New York, Dec 1944 or 1945.*

*Collection Alfred Lichtenstein & Louise Boyd Dale, Hamers, London, 11 May 1990, lot 67.*

44a

**200**

(270)

- 3058** 1 d. vermilion, on bluish medium wove paper, a used example with good margins all round and just touched top right, used on cover, no side flaps, from Bathurst to Killoshill, tied by "9" reversed numeral obliterator in black. Reverse with 'Bathurst / Crown / New S. Wales' datestamp (July 13) in black.

47

**100**

(135)



Albury from the Murray



normal 'NNY'



small 'NNY'



3059

Gibbons

Start price in CHF      Start price ca. AU \$

**3059** 1 d. vermilion, on bluish medium wove paper, a used horizontal pair, positions 25-26, with right hand stamp showing small 'NNY' in 'PENNY' plate variety, clear margins as somewhat roughly separated, used on 1853 Evans correspondence entire letter to Albury tied by bold strikes of "48" numeral obliterations of Tarcutta. Reverse with superb 'Tarcutta / N. S. W.' datestamp (Feb 14) in black. The stamps lifted for checking and hinged back in to place. Scarce and most attractive entire.

48



**200**

(270)



3060



3061

**3060** 1 d. brick-red on bluish medium wove paper, position 21, a fine used example, showing 'No leaves to right of SOUTH' plate variety, four margins and lightly cancelled leaving the variety clear, some natural paper flaws. Scarce so fine Gi = £ 350.

48a

**120**

(160)

**3061** 1 d. claret on bluish thick vertically laid paper, a fine used example, four margins with portion of adjoining stamp at top, lightly cancelled by numeral obliterator in black. A scarce stamp Gi = £ 475.

50

**150**

(205)

1851 (July) / 1855, Two Pence, Plate I



3062



3064



3065



3066

		Gibbons		Start price in CHF	Start price ca. AU \$
3062	2 d. ultramarine, on thick yellowish paper, Plate I, an unused example with huge margins all round, of excellent delicate sky blue colour, without gum Gi = £ 1'800.	51	(*)	300	(405)



3063

3063	2 d. ultramarine, on thick yellowish paper, Plate I, a fine used example on 1852 Evans correspondence cover to Albury, tied by "48" Tarcutta numeral obliterator in black. Reverse with 'Tarcutta / Crown / New S. Wales' datestamp (Jan 19), Albury datestamp (Jan 20) and 'Melbourne / Crown / Victoria' datestamp (Jan 22) and thus apparently forwarded without notification on the front panel (perhaps bundled with other letters). Stamp removed for checking and hinged back in to place as usual but an attractive cover.	51	✉	120	(160)
3064	2 d. greyish blue, fine impression on greyish medium thick wove paper, Plate I, position 10, an unused example with full margins all round in a deep grey shade, one small age spot does not detract, fresh and fine unused, without gum Gi = £ 1'300. <i>Provenance: Collection Maurice Burrus, RL, London, 11 Feb 1964, lot 314.</i>	55	*	200	(270)
3065	2 d. greyish blue, fine impression on greyish medium thick wove paper, Plate I, positions 46-47, an unused horizontal pair, of excellent colour, some minor age spots and very minor corner bend not affecting appearance and mentioned for full accuracy, a fresh and most attractive multiple. Rare Gi = £ 2'600. <i>Provenance: Dr. W. R. D. Wiggins, RL, Zurich, 26 Nov 1981, lot 1761.</i>	55	*	500	(675)
3066	2 d. ultramarine, worn impression on blue wove medium paper, Plate I, a very fine used example with very clear 'Double Print' variety showing two lower framelines 1 mm. apart, large margins all round, neatly cancelled in black.	58		100	(135)

### 1853 (Oct.), Two Pence, Plate II



3067



3069



3068

		Gibbons	Start price in CHF	Start price ca. AU \$
3067	2 d. deep ultramarine on bluish hard paper, Plate II, position 34, a superb used example with large margins all round, cancelled by Victoria Butterfly No. 1 (Melbourne) in black. Scarce and most attractive. Opinion Holcombe (1998) Gi = £ 130.	60	150	(205)
3068	2 d. deep Prussian blue, worn impression in an early state on hard blue wove paper, Plate II, position 4, a fine unused example with good to large margins all round, of exceptional fresh colour and most attractive. A rare stamp Gi = £ 2'000. <i>Provenance: Baron Philipp von Ferrary, Sale 3, Paris, 5-7 April 1922, lot 144.</i>	62 (*)	400	(540)
3069	2 d. deep Prussian blue, worn impression, on hard blue wove paper, Plate II, positions 9/19, a fine used vertical pair with large margins all round, of fine colour, cancelled by "66" numeral obliterator of Singleton. A fine and attractive pair Gi = £ 240+.	62	100	(135)

### 1852 (Dec.), Three Pence

Baron Philipp  
von Ferrary

Arthur Hind



3070



Alfred H. Caspary



Josiah K. Lilly Jr.

3070	3 d. dull yellow-green, on medium greyish paper, a fine unused example, position 8, marginal from top of sheet, clear margin at right and base and portion of adjoining stamp at left, of rich colour and large part og. A wonderful and extremely rare stamp, this was cut (for some obscure and daft reason) from the famous Sir Daniel Cooper (first President of the RPSL) block of 38 stamps, thus this is the finest of the single stamps from the original multiple. Cert. BPA (1975) Gi = £ 3'000. <i>Provenance: Collection Baron Philipp von Ferrary, Sale 3, Paris, 3-4 April 1922, lot 132. Collection Arthur Hind, Harmsers, London, 2-4 July 1934, lot 217. Collection Alfred H. Caspary, Harmsers, London, 6-9 Oct 1958, lot 160. Collection Josiah K. Lilly, Harmsers, New York, 15-16 May 1958, lot 284. Thereafter cut with the John Boker and 'V. P. Manwood' sales showing the left hand block of fifteen stamps only.</i>	67	*	1'000	(1'350)
------	---	----	---	-------	---------





3071



View of Sydney



3072

Gibbons

Start price in CHF	Start price ca. AU \$
-----------------------	--------------------------

- 3071** 3 d. dull yellow-green, on medium greyish paper, a vertical pair and a vertical strip of three used on small piece, each stamp cancelled by Sydney mute obliterations in black, lower stamp with part London 'Paid' cds in red (Aug 20). Margins touched to large but a spectacular piece Gi = £ 500+.

67	△	<b>200</b>	(270)
----	---	------------	-------

### 1852 (April), Six Pence

- 3072** 6 d. yellow-brown, on medium bluish grey wove paper, Plate I, position 1, a superb used example from the top left corner of the sheet, in a pale sandy shade, tiny trace of thin not detracting from fine appearance, lightly cancelled and most unusual Gi = £ 275.

74		<b>150</b>	(205)
----	--	------------	-------

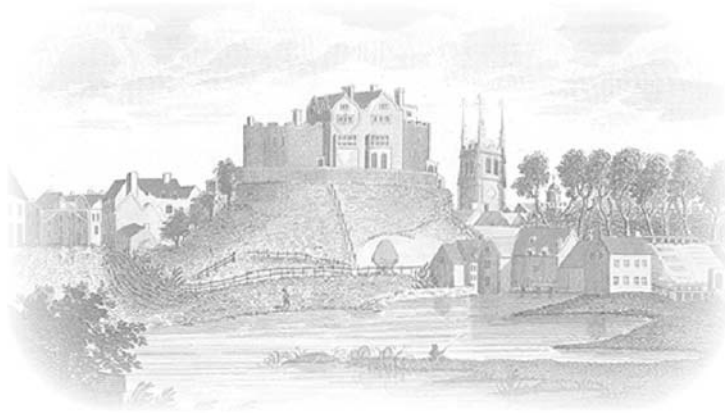


3073

- 3073** 6 d. greyish-brown, on medium bluish grey wove paper, Plate I, a fine large margined used example on 1853 cover, slightly trimmed and without side flaps, endorsed 'p. Vimeira' to Finsbury, London, tied by Sydney mute obliterator in black with manuscript charge '1/4d.' due upon receipt (double rate). Reverse with 'Ship Letter / Crown / Ship Letter' (Jan 19) in black and London arrival (April 29) in red. Some tone spots but a scarce usage.

76	✉	<b>150</b>	(205)
----	---	------------	-------

## 1853 (May), Eight Pence



Tamworth Castle, Staffordshire



3074



Maurice Burrus

Gibbons

Start price  
in CHF

Start price  
ca. AU \$

**3074** 8 d. dull yellow on medium bluish paper, three single examples used in combination with single 1852 6 d. grey-brown on bluish wove paper, vertically creased by file fold, margins generally fine for these issues, used on 1853 cover, no side flaps, from Sydney to Tamworth endorsed '*per Chusan via Southampton*', all tied by mute obliterations in black. Manuscript '2/-' (shillings) credit in red ink on front and 'London / Paid' cds in red (Nov 3). Reverse with 'Sydney / N.S.W.' datestamp (July 28) in black and 'Tamworth' arrival cds in green (Nov 3). The front panel with sympathetically removed inking over the addressee's name but a remarkable and beautiful cover for the connoisseur.

*Provenance:* Collection Maurice Burrus, RL, London, 11 Feb 1964, lot 344.

Collection E. R. Slade Slade, Harmers, London, 3-4 April 1979, lot 356.

Collection 'España', Harmers, London, 23 March 1984, lot 2432.

79+ 74



**2'500**

(3'375)



3075

Gibbons

Start price in CHF	Start price ca. AU \$
-----------------------	--------------------------

- 3075** 8 d. orange-yellow on medium blued paper, an unused example with four margins and sheet marginal from left of sheet, in a fine vibrant shade, with part og. Trivial, possibly natural spot in margin otherwise an outstanding example of a very rare stamp indeed. Cert. RPSL (1981) Gi = £ 13'000.

*Provenance: Collection 'V. P. Manwood', Siegel, New York, 8 Nov 1995, lot 4440.*

80	*	<b>3'500</b>	(4'725)
----	---	--------------	---------



*The Butcher Shop in Wagga Wagga*



3076

- 3076** 8 d. orange-yellow on medium bluish paper, a fine large margined example used on 1854 registered cover from Wagga Wagga to Springfield tied by bold "49" numeral obliterator in black. 'REGISTERED / WAGGA WAGGA' at left and reverse with 'Wagga Wagga / N.S.W.' datestamp (May 19), 'Tarcutta' datestamp of transit (same day), 'Yass' datestamp (May 20) all in black. An attractive and extremely scarce single franking.

80	✉	<b>1'000</b>	(1'350)
----	---	--------------	---------



## 1854 (Jan. - March), Laureated with double-lines watermark figures

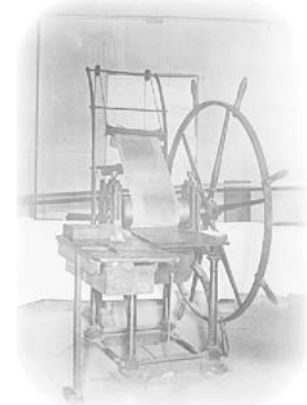
No Leaves



pos. 21



3077



Printing Press used in 1854

Gibbons

Start price  
in CHF

Start price  
ca. AU \$

- 3077** 1 d. red-orange on yellowish wove wmk'd paper, an unused block of twelve, positions 21-24/31-34/41-44, of outstanding fresh colour and with just touched to large margins all round, position 21 showing 'No Leaves to right of SOUTH' variety, central crease in margin between second and third vertical rows, horizontal gum crease at base, neither affecting the dramatic appearance of this rare multiple with near full browned original gum. Remarkable and rare. Cert. RPSV (2000) GI = £ 5'800+.

82+ 82a

田\*/\*\*

**2'000**

(2'700)



3078



3079



John R. Boker Jr.

- 3078** 2 d. Prussian blue on wmk'd paper, Plate III, a fine four margined used example, variety 'Watermark '2' Inverted', lightly cancelled in black GI = unpriced.

85w

**100**

(135)

- 3079** 3 d. bright yellow-green on wmk'd paper, a superb used example with large margins all round and "J. Carmichael" imprint at base, lightly cancelled in black. A lovely stamp  
GI = £ 50.

Provenance: Collection John Boker, Harmers, London, 14 April 1981, lot 34.  
Collection 'España', Harmers, London 23 March 1984, lot 2441.

87

**150**

(205)



1854/59, Garter



3080



Maurice Burrus

- 3080** 5 d. dull green, imperforate, an unused example of rich colour, good even margins all round, variety 'Inverted & Reversed Watermark', fresh and very fine without gum. Unlisted by Stanley Gibbons, an exceptional stamp and extremely rare <sup>Gi = £ 1'300+</sup>.  
*Provenance: Collection Maurice Burrus, RL, London, 11 Feb 1964, lot 375.*

Gibbons		Start price in CHF	Start price ca. AU \$
88w	(*)	500	(675)



3081

- 3081** Perkins Bacon Die Proof for the Garter 6 d. value, printed in black on thick card (45 x 44 mm.), the surround with some minor scuffs due to usage, otherwise superb and a great philatelic rarity. Unique.

89 Proof	(*)	5'000	(6'750)
----------	-----	-------	---------



3082



3083

- 3082** Perkins Bacon Plate Proof for Garter 6 d., printed in black, a superb block of four on thick paper, marginal from right of sheet, fresh and very fine.  
**3083** Perkins Bacon Plate Proof for Garter 6 d., printed in black, a superb block of four on thick paper, marginal from left of sheet, fresh and very fine.

89 Proof	田(*)	200	(270)
89 Proof	田(*)	200	(270)



S.S. Boomerang

3084

Gibbons

Start price  
in CHF

Start price  
ca. AU \$

- 3084** 6 d. slate green, imperforate, a fine large margined example used on 1855 cover from Sydney to Paris endorsed '*per 'Boomerang' via Melbourne*', tied by Sydney mute obliterator in black with Sydney datestamp (June 2). Struck on despatch with framed '*INSUFFICIENTLY / STAMPED*' in black. On arrival in Liverpool struck with both '*AUSTRALIAN / PACKET / LIVERPOOL*' datestamp (Sept 19) and with large charge marking "*d 6*" (pence) on front. Struck in London with '*COLONIES / &C. ART 13*' in red with transit cds verso (Sept 21) and thence via Calais to Paris where charged due with handstruck '*15*' décimes charge mark in black. A rare and superbly attractive cover.

91    ✉    **750**    (1'015)



3085

- 3085** 6 d. fawn brown, imperforate, an unused example with watermark error '*8*' for '*6*', good margins all round, trivial bend at top of no significance, without gum. A very rare stamp unused Gi = £ 4'000.  
*Provenance: Rapp auction, 31 Oct 1991.*

93a    (\*)    **1'000**    (1'350)



3086

- 3086** Plate Proofs for 8 d. value, imperforate on thick unwatermarked paper, a single example in yellow and a horizontal pair in blue (with some slight ageing to the paper), also a thin paper Proof for same value in dull purple on blued paper. A scarce trio.

97 Proofs    (\*)    **200**    (270)



3087

Gibbons

Start price	Start price
in CHF	ca. AU \$

- 3087** 1 s. rosy vermilion, imperforate, a used block of four, marginal from right of sheet with good to huge margins all round, lightly cancelled in black. Some minor bends on top pair only, not affecting the fine appearance of a scarce and attractive multiple. Signed G. Bolaffi; cert. A. Diena (1958) Gi = £ 300+.

99	⌘	<b>150</b>	(205)
----	---	------------	-------

View of Sydney Cove



3088

- 3088** 1 s. pale red, imperforate, two fine horizontal pairs with large margins all round, one pair with one stamp imperceptibly touched at top, used on 1857 cover endorsed 'Via Marseilles, per Mail Steamer Columbian' to London tied by Sydney mute obliterations in black. Reverse with 'Sydney / New South Wales' datestamp of despatch (July 17) in black. Central strike of London 'Paid' cds in red of arrival on front (Sept 19). A wonderful usage, carried at eight times the single rate, the 4 shilling franking being correct for a letter of between 1¾ and 2 ounces in weight. Rare and most appealing cover.  
Provenance: Collection John S. White, Spink, London, May 1997, lot 462.

100	✉	<b>1'000</b>	(1'350)
-----	---	--------------	---------



1856/59 (Jan.), Registration



3089

Gibbons

Start price in CHF      Start price ca. AU \$

3089      (6d.) vermillion & Prussian blue, imperforate without wmk., a fine unused example with good margins, cancelled by scarce 'Rocky River / NSW' (June 6, 1858) in black, also a further example in a paler shade showing portion of adjoining stamp at left, lightly cancelled in black Gi = £ 340.

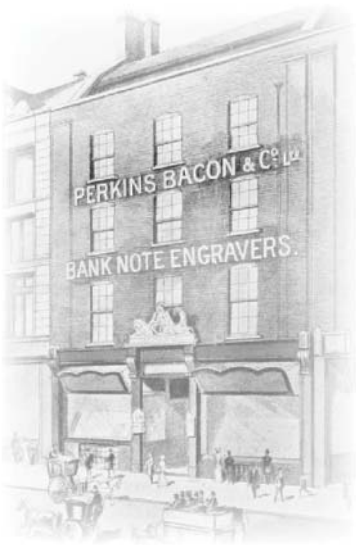
102

100      (135)

1856 (April - Oct.), Diadem



3090



Perkins Bacon & Co, London

3090      Perkins Bacon Diadem Proof, from a small Plate of six impressions (2 x 3), recess printed (engraved by Frederick Heath) in the 'Orange Chrome' shade on yellowish wove paper, each with waxed corners at lower left to prevent possible re-use and the value and 'Postage' erased from the transfer roller before laying down, marked "O.C." denoting the colour in manuscript at base. Minor corner bend but rare and most appealing Proof.

Proof      田(\*)

500      (675)





3091

Gibbons

<b>Start price</b>	<b>Start price</b>
<b>in CHF</b>	<b>ca. AU \$</b>

- 3091** 1 d. orange-vermilion, an unused horizontal, privately rouletted by James Dutton, positions 13-14 on the unique block of 24 subjects which was split up, some trivial ageing and with some creasing not detracting from the appearance, fresh and fine with large part og. Scarce - sold together with the original lot description and a colour copy of the original block.  
*Provenance: Robson Lowe, 6 Dec 1945, lot 661.*

107 var	*	<b>250</b>	(340)
---------	---	------------	-------



3092

- 3092** 1 d. carmine-vermilion, imperforate, a used horizontal strip of six, good to large margins all round but sixth stamp touched, of fine fresh colour, cancelled by scarce dotted "140" numeral obliterations of Moorna in black. Moorna P.O. was transferred to NSW from Victoria in 1855. A scarce and attractive multiple.  
*Provenance: Collection George Ginger, RL, London, 5-6 Dec 1945, lot 542.*

108		<b>150</b>	(205)
-----	--	------------	-------



3093



3094

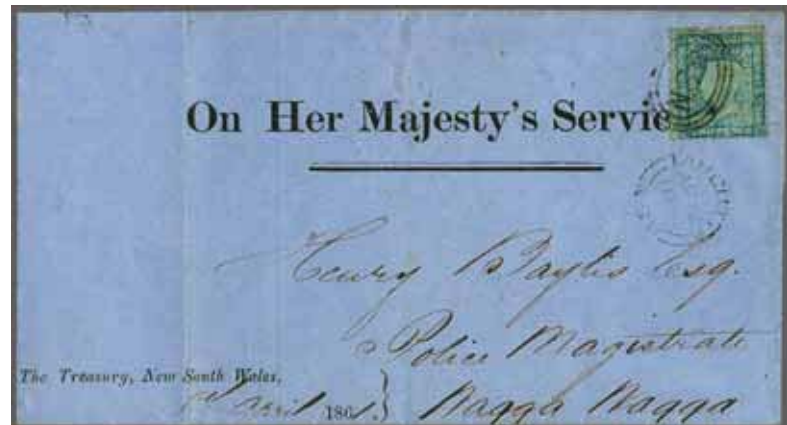
- 3093** 2 d. ultramarine, Plate I, imperforate, a fine unused corner block of four from upper left of the sheet, positions 1-2/13-14, of outstanding fresh colour with part of the scrolling marginal imprint at left, couple of negligible gum thins from previous hinge and light vertical crease affects two stamps but not the delightful appearance, large part og. A rare and attractive multiple Gi = £ 1'000+.  
*Provenance: Collection Dr. W. R. D. Wiggins, RL, London, 26 Nov 1981, lot 1837.*
- 3094** 2 d. blue, Plate II, imperforate on wmk'd paper, an unused example in a deep shade, ample to large margins all round, fresh and fine, large part og. Rare. Cert. RPSL (1944) Gi = £ 850.

111	田*	<b>750</b>	(1'015)
114	*	<b>300</b>	(405)

# 1860/72, Diadem Perf. 12



3095



3096

- 3095** 1 d. scarlet, perf. 12, used on 1863 Ladies's Envelope within Windsor, tied by dotted "3" numeral obliterator with Windsor datestamp (March 7) on reverse in black. A most unusual and very early usage.
- 3096** 2 d. pale Prussian blue, Plate II, Retouched, perf. 12. A fine example from Position 44, showing the Retouch above 'PEN' of 'PENCE' at base, used on 1861 OHMS envelope from Sydney to Wagga Wagga tied by oval NSW obliterator with 'Tarcutta' cds of transit alongside. Reverse with Sydney cds (April 8), Gundagai and Wagga Wagga cds's. An extremely rare example of the Retouch on letter, the cancellation leaving the Retouch clear. Cert. BPA (1989).

Gibbons

Start price  
in CHFStart price  
ca. AU \$

132

**150**

(205)

136b var

**300**

(405)

## Perf. 13



3097



3098

- 3097** 3 d. yellow-green, perf. 13, a fine unused horizontal pair, well centred and of excellent colour, with watermark error "6" for "3", fresh and fine, large part og. Scarce and most attractive Gi = £ 450+.
- Provenance: Collection Bill Frazer, Spink, London, Sept 2003.*  
*Collection 'Alvarado', Spink, London, 19 May 2010, lot 264.*
- 3098** 5 d. dark bluish green, a fine unused corner marginal pair in a deep shade, with the marginal scrolling in yellow green at left. Fresh and very fine, superb og. Scarce. Signed Ferchenbauer Gi = £ 190+.

157a

\*

**150**

(205)

162a

\*

**500**

(675)



3099

Gibbons

Start price	Start price
in CHF	ca. AU \$

- 3099** 1 s. crimson-lake, perf. 13, a magnificent unused block of four, marginal from left of sheet and showing the scrolling in margin at left in a rich deep shade with superb large part og. An exceptional and rare multiple Gi = £ 1'100+.

170

田\*

**750** (1'015)

### Compound perf. 12x13



3100

- 3100** 2 d. dull blue, compound perf. 12x13, a fine used example in a pale shade, cancelled by "86" numeral obliterator of Pennant Hills. Scarce stamp. Signed Herbert Bloch Gi = £ 180.  
Provenance: Collection E. R. Slade Slade, Harmers, London, 3-4 April 1979, lot 754.

172

**100** (135)

### 1861/88, Corbould



3101

- 3101** 5 s., a Colour Trial block of four printed in sepia-brown on wove paper watermarked by Large Star, horizontal crease between the Trials not greatly affecting the fine appearance of a very scarce multiple.

Provenance: Collection George Ginger, RL, London 5-6 Dec 1945, lot 731.  
Sotheby's, London, 15 Dec 1995, lot 415.

174 Trial

田(\*)

**750** (1'015)





3102

**3102** 5 s. rose-lilac, perf. 11, a superb unused block of four of rich colour, light wrinkles, two minute tone spots on large part og. A fine multiple *Gi* = £ 1'300+.  
*Provenance: Collection Sir Gawaine Baillie, Sotheby's, Melbourne, 13-15 July 2005, lot 860.*

Gibbons		Start price in CHF	Start price ca. AU \$
181	田*	300	(405)

1862/69, De La Rue



3103



Thomas De La Rue Company



3104

**3103** De La Rue Die Proof for the 1 d. value in pale brick-red on glazed white card, fresh and very fine.

**3104** De La Rue Die Proof for the 2 d. value in black on white glazed card, an early state with no cross-hatching above 'New South Wales' in the top corners and a full stop after 'Two Pence'; dated in black 'Sept. 5-61' at upper left. A rare and most interesting intermediate Proof.

186 Proof	(*)	200	(270)
188 Proof	(*)	250	(340)





3105

Gibbons

Start price  
in CHF      Start price  
ca. AU \$

- 3105** 2 d. blue, London printing on unwatermarked paper, an unused block of 24 (6 x 4) from the upper right pane, of outstanding freshness and appearance, marginal at right with imprint '(1)abel. 1s. per Row of Six. 10s. per Sheet of Sixty' in blue. Large part or unmounted og. A delightful and rare multiple Gi = £ 4'800.

188    田\*/\*\*    **1'000**    (1'350)

### 1871/1902, De La Rue



3106

- 3106** 1 d. dull red in two vertical pairs and 2 d. Prussian blue (4), all perf. 13, used on 1872 cover to London endorsed 'via Southampton' and tied by "32" numeral obliterations of Berrima with datestamp of despatch on front (March 17). Reverse with Sydney cds (May 18) and London arrival cds (July 15). Minor edge wear but a fine and most attractive double weight cover.

207+ 209

**150**

(205)



3107



3109



3108

- 3107** De La Rue sunken Die Proof for the 6 d. value in black, the completed Die, inset into white card struck with BEFORE HARDENING and dated 'Feb, 28. 1870', both in black, with mica cover for the stamp area. Rare and most attractive.
- 3108** De La Rue Die Proofs (2) for the 6 d. value in green on glazed white card, and in pale brown on glazed white card, this last very slightly rubbed, a fresh and fine pair.
- 3109** De La Rue Die Proof for the 1 s. value in black on glazed white card, intermediate state showing the four corners without scrolling and without dots between the wording, dated 'Aug 11. 1875' in black at upper left. Fresh and fine, a rare Proof.

Gibbons

Start price  
in CHFStart price  
ca. AU \$

216 Proof

(\*)

**250**

(340)

216 Proofs

(\*)

**200**

(270)

221 Proof

(\*)

**250**

(340)



3110

- 3110** De La Rue Die Proofs (2) for the 1 s. value in pale lilac on glazed white card, and in pale blue on glazed white card, this last very slightly rubbed, a fresh and fine pair.

221 Proofs

(\*)

**200**

(270)





3111



3112

- 3111** Diadem 3 d. yellow-green, wmk. Crown/NSW upright, a fine unused block of four, variety Imperforate, of excellent fresh colour and superb large part og. A rare and attractive multiple Gi = £ 1'000+.
- 3112** 5 d. blue-green, wmk. Crown/NSW, a superb unused horizontal strip of three, large margins all round and of rich colour, fresh and very fine, trivial gum wrinkles, superb og. A rare and most attractive strip Gi = £ 475+.
- Provenance: Collection 'Alvarado', Spink, London, 19 May 2010, lot 285.*

Gibbons		Start price in CHF	Start price ca. AU \$
226g	田*	<b>300</b>	(405)
233e	*	<b>200</b>	(270)



Double Surcharge



3113



3114

- 3113** 'Ninepence' on 10 d. red-brown, wmk. Crown/NSW, perf. 11, a fine example with variety "Double Surcharge", used on registered cover to Auckland, tied by 'Registered / Sydney / NSW' cds (Feb 1, 1901) in black with information strike alongside. Top back flap missing but with part Auckland arrival cds on reverse Gi = £ 425 off cover.
- 3114** 10 d. violet, wmk. Crown/NSW, perf. 11x12, an unused corner block of 36 (6 x 6) from lower right corner of the sheet, Plate '5' in margin at base, fresh and very fine, superb og. with most stamps unmounted og. A delightful and very scarce multiple Gi = £ 1'250+.

236dca	✉	<b>200</b>	(270)
236e	田*/**	<b>300</b>	(405)

## 1885/94, Stamp Duty overprinted POSTAGE



3115

Gibbons

Start price  
in CHFStart price  
ca. AU \$

- 3115** £ 1 lilac & claret, wmk. NSW sideways, overprinted POSTAGE in blue, perf. 12, a wondrous unused example of extraordinary depth of colour, a few somewhat nibbed perforations at base, otherwise fresh and fine, browned large part og. An extremely rare stamp. Signed A. Diena; cert. RPSL (1968) Gi = £ 10'000.

240a

\*

**2'000**

(2'700)

## 1888/89, Centenary of New South Wales



3116



3117



- 3116** 1 s. violet-brown with 'Kangaroo' vignette, a fine unused horizontal pair, variety Imperforate, large margins all round with portion of adjoining stamp at top, part og. Very scarce. Cert. RPSL (1978) Gi = £ 1'400.
- 3117** 'Map of Australia', 5 s. Colour Trials (3), imperforate on unwatermarked white wove paper, printed in black, pale brown and in bluish grey. A scarce group.

258ca

\*

**350**

(475)

261 Trials

(\*)

**250**

(340)



3118



3119



3120

- 3118** 'Map of Australia', 5 s. deep purple and 5 s. deep violet, wmk. '5/-', perf. 10, unused examples of the two shades, typical centering for the issue, one with horizontal crease, both with large part og. Gi = £ 850.
- 3119** 20 s. cobalt-blue, wmk. '20/NSW', perf. 10, a fine unused example of good colour, marginal from top of sheet with 'Postage' imprint, fresh and fine, large part og. Scarce and attractive stamp Gi = £ 475.
- 3120** 20 s. cobalt-blue, wmk. '20/NSW', perf. 12, a fine unused example in a pale shade, marginal from base of sheet with 'G.Pr.O/N.S.W.' imprint, thin in margin not detracting from appearance, fresh and fine, large part slightly browned og. Scarce and attractive stamp Gi = £ 450.

261+ 261a

\*

**150**

(205)

264

\*

**150**

(205)

264ca

\*

**150**

(205)



1894/1904: Stamp Duty overprinted POSTAGE



3121

Gibbons

Start price in CHF      Start price ca. AU \$

**3121** De La Rue Die Proof for Stamp Duty 6 s. value in lilac & carmine on glazed white card. Minor rubbing otherwise fresh and fine, a scarce Proof.

(\*)      **150**      (205)



3122



3123

**3122** 10 s. violet & claret, overprinted POSTAGE in blue, wmk. NSW type 59, perf. 12x11, a fresh unused block of four, marginal from left, of excellent rich colour and fine, somewhat wrinkled large part og. A scarce and most attractive multiple Gi = £ 1'400+.

275b      田\*      **450**      (610)

**3123** 10 s. violet & aniline crimson, overprinted POSTAGE in blue, wmk. NSW type 59, perf. 12x11¼, a fresh unused horizontal pair, of deep fresh colour and fine, large part og. A scarce and most attractive multiple Gi = £ 850.

276b      \*      **250**      (340)

Later Issues from 1897



3124

		Gibbons		Start price in CHF	Start price ca. AU \$
3124	1 d., 2 d. and 2½ d., a fine composite Die Proof (1 d. and 2 d. Die I), imperforate, printed in reddish-brown on glazed white paper, 145x95 mm., fresh and very fine. A scarce and most attractive Proof.	288+ 292+ 295	*	150	(205)



3125

3125	1 d. rose-carmine, Die II, an unused vertical pair, variety "Imperforate Horizontally Between", fresh and very fine, trivial aging on large part og. Rare Gi = £ 1'200.	290d	*	300	(405)
------	---	------	---	-----	-------



3126

Gibbons

Start price  
in CHF

Start price  
ca. AU \$

- 3126** 1 d. rose-carmine, Die II, a wonderful unused complete pane of 60 stamps (6 x 10), with variety "Completely Imperforate", full imprints at sides with 'Diamond Jubilee Postage Stamp. Price: 1 d. per Label. 6 d. per Row of Six. 5 s. per Sheet of Sixty.' at left, 'Postage - One Penny' at top and 'WCA' monogram of engraver (Amor), 'G.Pr. O. / N.S.W.' and '1897' all at base, minor stain in margin at left otherwise fresh and very fine with full somewhat browned unmounted og. Extremely rare and most attractive sheet Gi = £ 22'500.

291

田\*\*

**4'000** (5'400)





3127



3128

Gibbons

Start price  
in CHFStart price  
ca. AU \$

- 3127** 5 s. reddish-purple re-issue, perf. 11x11, an unused block of four, corner marginal from upper left of the sheet with the floral margin at left, of rich colour with top two stamps with re-entries, with hinge to prevent separation on position 1 which has left a minor trace of stain, large part og. Scarce Gi = £ 195+.
- 3128** 5 s. reddish-purple re-issue, perf. 11x12, a fine used block of eight (2 x 4), positions 6-7/16-17/26-27/36-37, with pos. 26 showing 'Cracked Plate' and position 36 with re-entry, in a deep shade and lightly cancelled in black. Rare multiple.  
*Provenance: E. R. Slade Slade, Harpers, London, 3-4 April 1979, lot 784.*

297c

田\*

**150**

(205)

297ce

田

**150**

(205)



3129



3130



- 3129** 6 d. orange, a fine unused horizontal pair, variety "Imperforate" with part sheet margin at left, fresh and fine with large part og. Scarce Gi = £ 600.
- 3130** Lyrebird 2 s. 6 d. green, the rare 'Postal Forgery' of this stamp, printed in a deep myrtle green shade, apparently successfully used in Sydney (but the Sydney cancellation also appears to be forged), matched with a genuine used example; together with the article by Robson Lowe from the 'Philatelist' detailing the original find of this Postal Forgery, these being the two stamps used to illustrate the article.

305a

\*

**200**

(270)

326 Postal  
Forgery**100**

(135)





3131

**3131** 5 d. dark blue-green, perf.  $11\frac{1}{2} \times 11\frac{1}{2}$ , a spectacular unused block of 40 (4 x 10) of rich colour, positions 17-20/97-100, marginal from right of sheet with manuscript ink notation 'August 10, 07' at top right for date of purchase, some hinges to prevent separation of the multiple, large part of unmounted og. Gi = £ 400++.

Gibbons		<b>Start price</b> in CHF	<i>Start price</i> ca. AU \$
329b	田*/**	<b>200</b>	(270)



3132

**3132** 6 d. deep orange, perf. 11x11 all round, a fine unused example, of excellent rich colour, marginal from base of sheet, large part og. Scarce Gi = £ 350.

342a	*	<b>100</b>	(135)
------	---	------------	-------

New South Wales / Victoria Combination Cover



Maurice Burrus

3133

Gibbons

Start price in CHF    Start price ca. AU \$

**3133** 1860/72: NSW Garter 6 d. reddish purple, perf. 13, used in combination with Victoria 1862/63 6 d. black, on 1864 cover from Deniquilin (on the Edward River on the border with Victoria) to Inverary, Scotland tied by sunburst "51" numeral obliterator in black and by Melbourne barred obliterator. Backstamped 'Deniquilin' cds (May 20), Moama (May 21), Melbourne (May 23) and Greenock (July 19). A superb and extremely rare cover. *Provenance: Collection Maurice Burrus, Harmers, London, 11 Feb 1964, lot 419.*

163    ✉    **750**    (1'015)

OFFICIAL STAMPS



3134

**3134** 1879/85: Diadem 3 d. yellow-green, perf. 12, a fine unused block of six (3 x 2), fresh colour and superb og. A rare and most attractive multiple. Cert. BPA (1982) Gi = £ 1'350+.

O5bb    田\*    **350**    (475)



3135

- 3135** 1880 (Feb 15): Courbould 5 s. deep purple, perf. 13x13, an unused example centred to base, of good colour with paper slightly yellowed due to part og. A very stamp. Cert. RPSL (1959)  
Gi = £ 850.

Gibbons

Start price  
in CHF

Start price  
ca. AU \$

O13

\*

**120**

(160)



3136



3137



3138

- 3136** 1882/85: 8 d. yellow, wmk. inverted and reversed, perf. 10x10, a fine unused block of eight (2 x 4), marginal at right, of rich colour, with Requisition Sheet number "7751" printed inverted on the reverse of the eighth stamp in the block. Fresh and fine, large part og. An unusual multiple Gi = £ 200+.
- 3137** 1886/87: 1 d. scarlet, perf. 10, a fine unused block of four of fresh colour, fourth stamp with variety 'O' in 'O.S.' sideways, fine large part og. An attractive and scarce multiple Gi = £ 400+.
- 3138** 1891 (March): 20 s. cobalt-blue, perf. 10, a fine used example of good centering, typical slightly rough perfs., cancelled by oval NSW cto handstamp in black. Rare Gi = £ 1'100.

O32

田\*

**120**

(160)

O34

田\*

**150**

(205)

O50

**200**

(270)