

Great Britain 1840–1841 The World's First Postage Stamps

The Simon Beresford-Wylie Collection (part I)

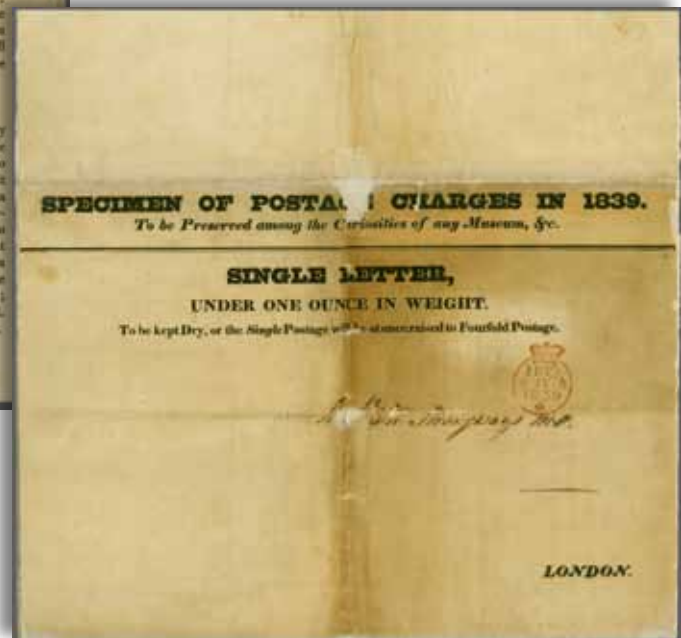
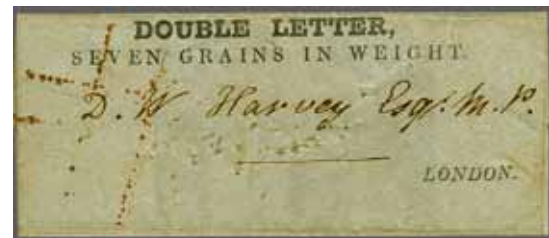
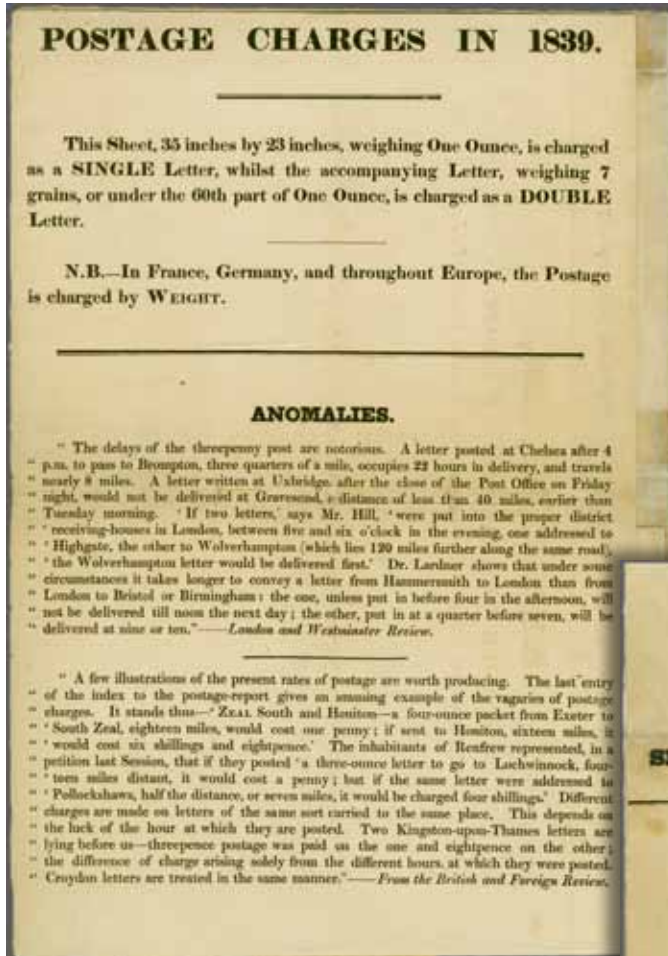


Rowland Hill

The Beginning of the Uniform Penny Post



Daniel Whittle Harvey, M.P.



10001

Gibbons

Start price in CHF Start price approx. €

- 10001 1839, Mercantile Committee, "SPECIMEN OF POSTAL CHARGES IN 1839 / To be Preserved among the Curiosities of any Museum", giant letter-sheet to M.P. Strangeways in London, struck with FREE Crown Circle (5 July, 1839), with contents highlighting anomalies in postage rates of the period, some reinforced folds and prior repairs, as expected with such an item, offered with its companion small envelope, 71mm x 30mm, printed "DOUBLE LETTER / SEVEN GRAINS IN WEIGHT", to D.W. Harvey, M.P., with contents beginning "The delays of the threepenny post are notorious...", an exceptional and rare group illustrating the arguments for postal reform, and demonstrating the lobbying efforts of the business community to bring about change.

✉ 1'500 (€ 1'575)



View of London



10002

Gibbons

Start price in CHF Start price approx. €

10002 **First Official Day of Use:** wrapper bearing "P1" manuscript notation in purple, indicating prepayment of one penny, further "1d paid" in black at lower left, struck on reverse with "Rugeley" double-arc'd despatch of 10 January, 1840, London double-lined tombstone in red (11 JA) on front, to London, fresh and fine.

✉ **150** (€ 160)



10003

10003 **Second Day of Use:** small cover, struck with London octagonal PD datestamp in red (11 January), used by the Chief Office of the Two Penny Post, further partial double-circle PAID marking, sent within London to St. Mary Cray, neatly-struck "Too Late" and red c.d.s. receiver backstamp (13 January), some edge toning, an unusual second day usage.

✉ **150** (€ 160)

Treasury Competition Essays and Embossed Essays for Stamping Paper



10004



James Bogardus

Gibbons

Start price in CHF Start price approx. €

10004 1839, 1d red and white composite paste-up essay, attributed to James Bogardus, built up from cut-outs in red and white paper with hand-drawn "1" at centre and "1/2 oz / Penny" below, originally discovered among the papers of Rowland Hill, a mere thirteen singles and two blocks of four recorded in the Karl Louis Card Index, fine and rare.
Provenance: Ex. Mariner Collection, Spink, 17 December 1997, lot 1053.

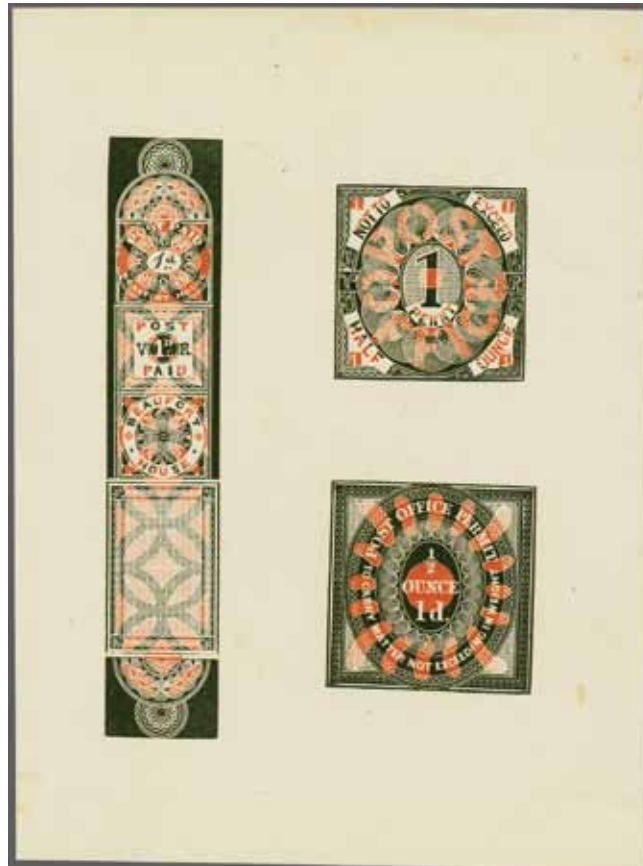
(*) **1'000** (€ 1'050)



10005



10006



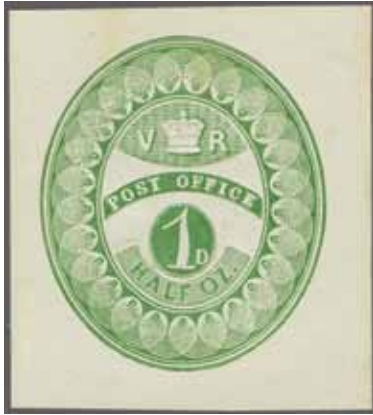
10007

10005 1839, Charles Whiting of Beaufort House, 1d. red and blue on wove paper, Congreve Method essay, margins ample to clear, small paper wrinkles at upper left, else fine.
10006 1839, Charles Whiting of Beaufort House, 1d. black and red on wove paper, Congreve Method essay, large balanced margins, attractive and very fine.
10007 1839, Charles Whiting of Beaufort House, composite essay of five in red and black, 105mm x 142mm, printed using the Congreve Method of using separately inked interlocking plates to allow simultaneous printing in two colours, demonstrating how Whiting printed the examples he presented to the Parliamentary Commission, and later used to promote his printing business, the odd trivial tone spot, else a remarkably fresh and scarce essay.

(*) **200** (€ 210)

(*) **280** (€ 295)

(*) **500** (€ 525)



10008



10009



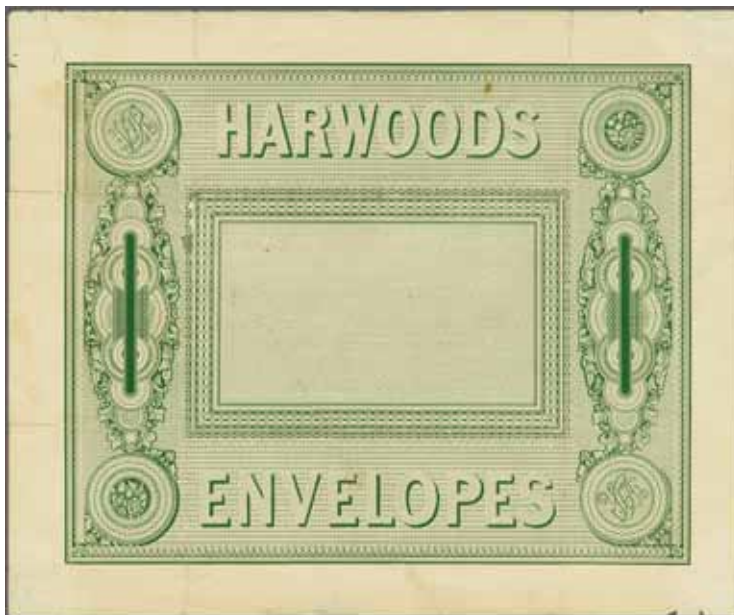
10010

Gibbons

Start price in CHF Start price approx. €

- 10008** 1839, Charles Whiting of Beaufort House, oval embossed essay in green on un gummed white wove paper, with "V (Crown) R / POST OFFICE / 1D / HALF OZ" in centre, margins well clear of design, the odd trace of toning, else fine and scarce.
- 10009** 1839, Charles Whiting of Beaufort House, embossed essay in carmine-lake, 1862 reprint on wove paper, with PAID above uncrowned Queen, wonderfully fresh and very fine.
- 10010** 1839, Charles Whiting of Beaufort House, embossed essay in rose using Wyon's head, with POSTAGE ONE PENNY above Queen, cut to oval, 29mm x 28mm, small pinhole, scarce.

(*)	300	(€ 315)
(*)	180	(€ 190)
(*)	100	(€ 105)



10011



Charles Whiting

- 10011** 1839, Charles Whiting of Beaufort House, Harwood's Envelopes, sheet in green, 26mm x 21.5mm, adhesive-reinforced folds on reverse, repaired diagonal tear and other small edge faults, still a scarce essay.

(*)	150	(€ 160)
-----	------------	---------



10012



10013

Gibbons

Start price
in CHF Start price
approx. €

- 10012** 1837, London District Post, John Dickinson, 1d. yellow-buff envelope essay, on Dickinson silk thread paper, engine-turned background, designed as a protection against forgery, fresh and fine. Huggins E1a

Note: These essays were submitted to the Commissioners of the Post Office in 1837, and later re-submitted for the 1839 Treasury Competition.

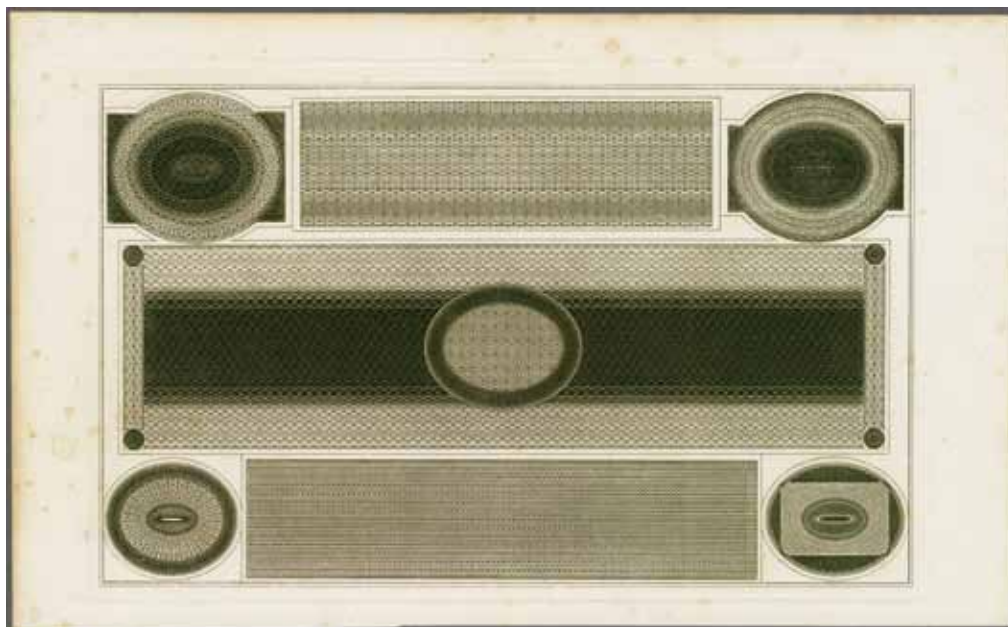
**200** (€ 210)

- 10013** 1837, London District Post, John Dickinson, 2d green letter sheet essay, on Dickinson silk thread paper, engine-turned background, designed as a protection against forgery, fresh and fine. Huggins E1b

These essays were submitted to the Commissioners of the Post Office in 1837, and later re-submitted for the 1839 Treasury Competition.

**120** (€ 125)

Design and Engraving of World's First Postage Stamp



10014

- 10014** 1840, 1d. black background trials, the so-called "Genesis Plate", plate proof on India on soft white card in black, from an original pull taken in 1825, with ornate engine-turned design by Perkins & Heath, from which the background for both the 1d. Black and 2d Blue was taken, some spotting mostly confined to borders, otherwise a fine example of this rare and important trial. Gi DP9 = £30,000

Note: In 1822, Perkins & Heath executed a bank note plate in hardened steel, for submission to the Bank of England in hopes of obtaining a printing contract. In 1825, a proof was pulled in black for a book which included potential designs for security bank notes, with the plate being used for subsequent reprints in 1827 and 1838, followed by later colour reprints in 1937.

DP9

(*)

6'000 (€ 6'300)



Charles Heath (1785-1848)



Henry Corbould (1787-1844)



10015



Colonel Bates

Gibbons

Start price in CHF Start price approx. €

10015 1840, the First (Later Rejected) Die for the One Penny Stamp, on India paper on soft white card, completed with the addition of "POSTAGE ONE PENNY" in sans-serif letters, hinge remnants on reverse of no importance given the exceptional desirability of this fourth and final stage of the ultimately rejected die, fine and rare, with 2016 P.T.S. Expertising Ltd. certificate. Gi. DP7 = £95,000+

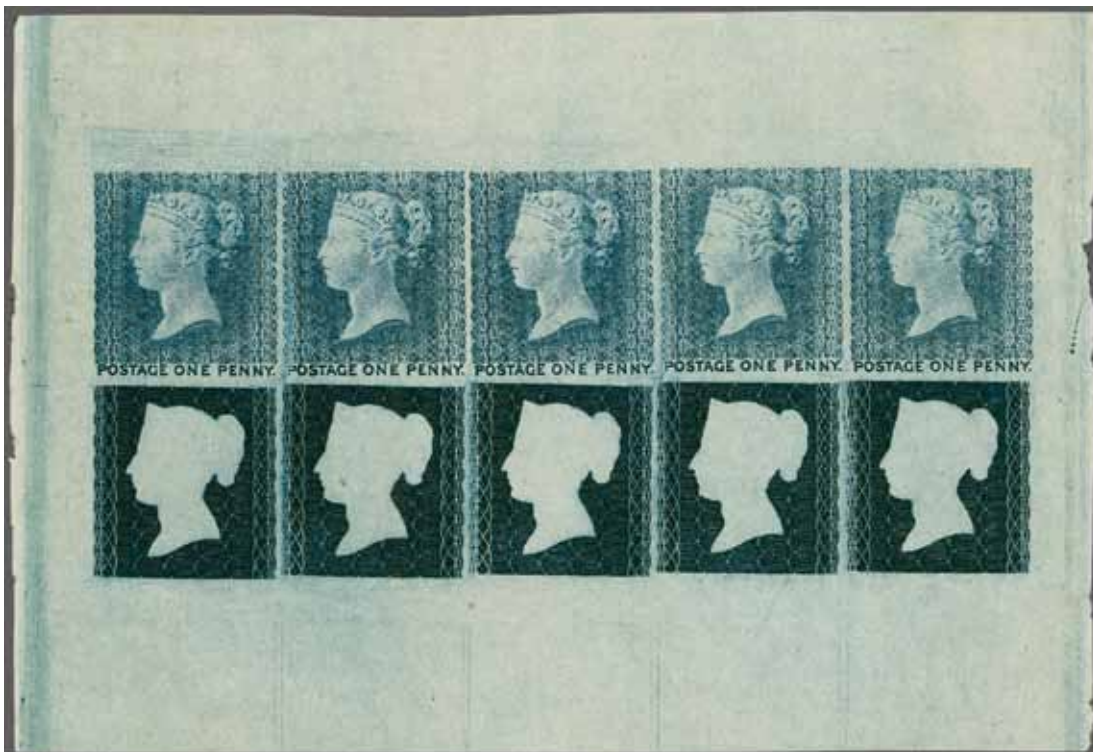
Note: In January, 1840, Charles Heath was commissioned to engrave the Queen's head onto a security background previously deemed suitable for postage stamps. A number of states of this die were prepared, based on the drawing by Henry Corbould. Ultimately, the die was abandoned as the background was deemed too light, and the Queen's head too lightly engraved, thus resulting in a poor transfer from the die.

Provenance: Collection Colonel Bates, H.R. Harmer; December 3-5, 1934.

DP7 (*) **25'000** (€ 26'250)



A young Queen Victoria



10016

Gibbons

Start price in CHF Start price approx. €

10016 1840 (January), combination proof in dark blue on wove paper, showing five impressions of the fourth stage of the first (later rejected) die, together with five impressions of the first stage of the accepted die, showing the cleared space prior to the engraving of the Queen's head, from an experimental plate made for comparison of the two backgrounds, as well as for a trial spacing between impressions, the occasional small and trivial edge flaw at left and right sides, of no consequence to the impressions, a choice example of this exceptionally rare proof. Gi. DP11 = £150,000

Provenance: Ex. A. Phillips Collection, Stanley Gibbons auction, 17-19 February 1972, lot 493

Ex. The "Yorkshire" Collection.

(*) **60'000** (€ 63'000)



View of 281 Strand in London



10017



James W. Palmer

Gibbons

Start price in CHF Start price approx. €

10017 1840 (March), 1d. Black, Master Die Proof, on India paper, mounted on soft card, cut to stamp size, showing the addition of the words POSTAGE and ONE PENNY, the four corner squares left blank, cancelled with "London W.C." squared circle, central horizontal crease, yet a die proof of great philatelic significance, one of the few such examples recorded in private hands, illustrating the stage at which final approval could be given to the design that would become the world's first adhesive postage stamp, this being the unique recorded cancelled example; with 2004 Royal Philatelic Society London certificate. Gi DP17a
A mere six examples (cancelled in favour for J.W. Palmer; a London Stamp Dealer at 281 Strand in 1886) of this Master Die Proof are recorded, with even fewer available to collectors. Three are held in institutional collections, with two examples found in the Royal Philatelic Collection, and one in the R.M. Phillips Collection at the Postal Museum (London). A further three are recorded in private hands, two of which, including the example offered here, are in the Beresford-Wylie Collection.
Provenance: Collection Shaida, Harmers Auctions SA, Lugano.

DP17a (*) **35'000** (€ 36'750)



10018



Ormond Hill

10018 1871, 2d Ormond Hill die proof, retouched in sage green on soft card, 59mm x 59mm, showing blank lower corners, stars in upper corners, light abino impression of "NEW DIE" lettering above, some light discoloration and small imperfections to card, but a most rare (just two such die proofs in green recorded in Karl Louis Card Index) and attractive die proof. Gi. DP46 = £18,000.
Provenance: Chartwell Collection, Spink 12 Dec. 2012, lot 67

(*) **4'500** (€ 4'725)

Rainbow Trials



10019



10020



10021

				Gibbons	Start price in CHF	Start price approx. €
10019	1840, 1d. Rainbow trial, State 1, from position 2 of the sheet, orange-red on white wove paper, large even margins, scarce and fine. Gi. DP20(1) = £3,500			DP20(1)	(*)	400 (€ 420)
10020	1840, 1d. Rainbow trial, State 2, position 5 and 6 of the sheet, bright pink on white wove paper, clear to large margins on three sides, including sheet margin at left, touched along foot, bright colour, a scarce trial. Gi. DP20(2)c. <i>Provenance: Sugden Collection, Robson Lowe, 27 July 1951, lot 46 (then part of a block of eight, positions 1 to 8).</i>			DP20(B)c	(*)	500 (€ 525)
10021	1840, 1d. Rainbow trial, State 3, deep blue on white wove paper, large balanced margins, showing trace of cancellation and evidence of subsequent official attempt at removal, fine. Cert RPSL (2001). Gi. DP20(3)b			DP20(3)b	(*)	400 (€ 420)



10022

- 10022** 1840, 1d. Rainbow trial, sheet of twelve subjects, State 1, reddish-brown on stout wove unwatermarked paper, deep rich colour and immaculate impression, the odd light trivial wrinkle due to previous hinging, small paper tear at lower right corner, in no way detracting from the dramatic visual appeal of this rare sheet. Gi. DP20
The Rainbow Trial sheets were prepared in order to test combinations of stamp and cancellation inks. They were printed without corner lettering, and with ragged upper right voided corners, traditionally-believed to be due to the corresponding grooves in the plate having been filled with wax, with more recent research suggesting a harder-filling substance may have been used.
Provenance: Major K.M. Beaumont Collection, Robson Lowe, 7-8 December 1965, lot 65 Collection "Tes", Robson Lowe, London, 5 October 1995, lot 98.

DP20 Ⓜ(*) **15'000** (€ 15'750)

VR 1d. Black Official Stamp



The Houses of Parliament in London



10023

Gibbons

Start price in CHF Start price approx. €

- 10023** 1840, "VR" 1d. black, lettered IH, large margins on two sides, close to clear at left and foot, unused no gum, some uniform toning, else fine. Cert RPSL (1983). Gi. V1 = £20,000
Though prepared in April 1840 for official use, the plan for special stamps for government use was abandoned, but only after 3323 sheets had been delivered. While these were ordered destroyed, 21 sheets are recorded as having survived; 13 were used for distribution with Postmasters Notices, while others were mistakenly allowed through the post, or used by Rowland Hill for cancellation experiments.
Provenance: Robson Lowe, 25 February, 1948, lot 410.
Robson Lowe, 6 May, 1959, lot 419

V1 (*) **2'500** (€ 2'625)



10024

- 10024** 1840, "VR" 1d. black, horizontal pair, lettered OI-OJ, ample to large margins all around, unused no gum, a desirable and fine multiple which may have originated from a Postmaster's Notice. Cert Royal Philatelic Society London (2001). Gi. V1 = £40,000
Remarks: Not from the Dublin Find/Crawford sheet. OI-OJ are still incorporated in the Crawford/Hind/Wills block MA-OL.
Though prepared in April 1840 for official use, the plan for special stamps for government use was abandoned, but only after 3323 sheets had been delivered. While these were ordered destroyed, 21 sheets are recorded as having survived; 13 were used for distribution with Postmasters Notices, while others were mistakenly allowed through the post, or used by Rowland Hill for cancellation experiments.
Provenance: Spink, 15 December 1999, lot 2280.

V1 (*) **6'000** (€ 6'300)

Cancellation Removal Trials



10025

- 10025** 1840, Paper and Gum Trials, small piece, 26mm x 41mm, endorsed in manuscript "og" [ordinary], "17lbs", and "La Po." [large Post], light thinning largely at right and horizontal crease near top, clear of notations, otherwise a fine and desirable trial. Gi. DP20G = £3,500+.
Remark: For similar "Specimens of Paper tried during the latter part of 1840 to test the efficiency of the gum on a thinner paper" see; N.P.M. London, Phillips Collection, volume III, pages 22 and 23.

Gibbons

Start price
in CHF Start price
approx. €

DP20G

400 (€ 420)

10026

- 10026** 1840, "VR" 1d. black, lettered OJ, with black Maltese Cross trial cancellation, on which an official attempt was made to remove the marking for experimental purposes, large even margins, scarce and fine. Cert Holcombe (1989) and BPA (2015). Gi. V1 = £22,500
Though prepared in April 1840 for official use, the plan for special stamps for government use was abandoned, but only after 3323 sheets had been delivered. While these were ordered destroyed, 21 sheets are recorded as having survived, some of which were used for official experimental attempts at cancellation removal.
Provenance: Collection Michael Lea, 1978.
Habsburg, Feldman Auction, Zurich, 1-3 May, 1989, lot 20301
Harmers of London, 6-7 October, 1998, lot 1959

5'000 (€ 5'250)

1840, 1d. black, early usages during May 1840



10027



London's General Post Office

Gibbons

Start price
in CHF Start price
approx. €

- 10027 May 6 (First Official Day of Use):** 1d. intense black, plate 1a, lettered GI, margins clear to good, tied to large part wrapper by red Maltese Cross, the reverse struck with red "London Chief Office" c.d.s. (C MY - 6 1840), a fine and scarce first day usage. Cert RPSL (1973).
Gi. AS1ta = £75,000.

The accompanying RPSL certificate notes "the piece is genuine and the stamp may have been used on it, but the proof is lacking through the weakness of the tie." Robson Lowe, in his 1974 sale description of this wrapper, took issue with this opinion noting "with respect, in our opinion the stamp is clearly tied by the indentation of the cancellation and the percolation of the linseed oil (with which the cancelling ink was made) through the paper. We guarantee it to be genuine." In our opinion, Robson Lowe reached the correct conclusion.

Reference: Illustrated in "May Dates", by Michael Jackson, 1999, pages 36 and 37.

Provenance: Robson Lowe, London, 20 November, 1974, lot 1011

AS1ta

△

2'500 (€ 2'625)



10028

- 10028 May 7 (Second Official Day of Use):** 1d grey-black, plate 1a, lettered NB-NC, good to large margins on three sides, shaved at top, tied to folded cover to Carlisle by red-brown Maltese Cross, unusually made from a portion of a map of Fleetwood on Wyre, reverse with London Chief Office evening duty date-stamp (7 May), slight staining to upper right of NC, a rare double-rate usage, one of only three recorded on this early May date. Gi. AS2tb.

Reference: Illustrated in "May Dates", by Michael Jackson, 1999.

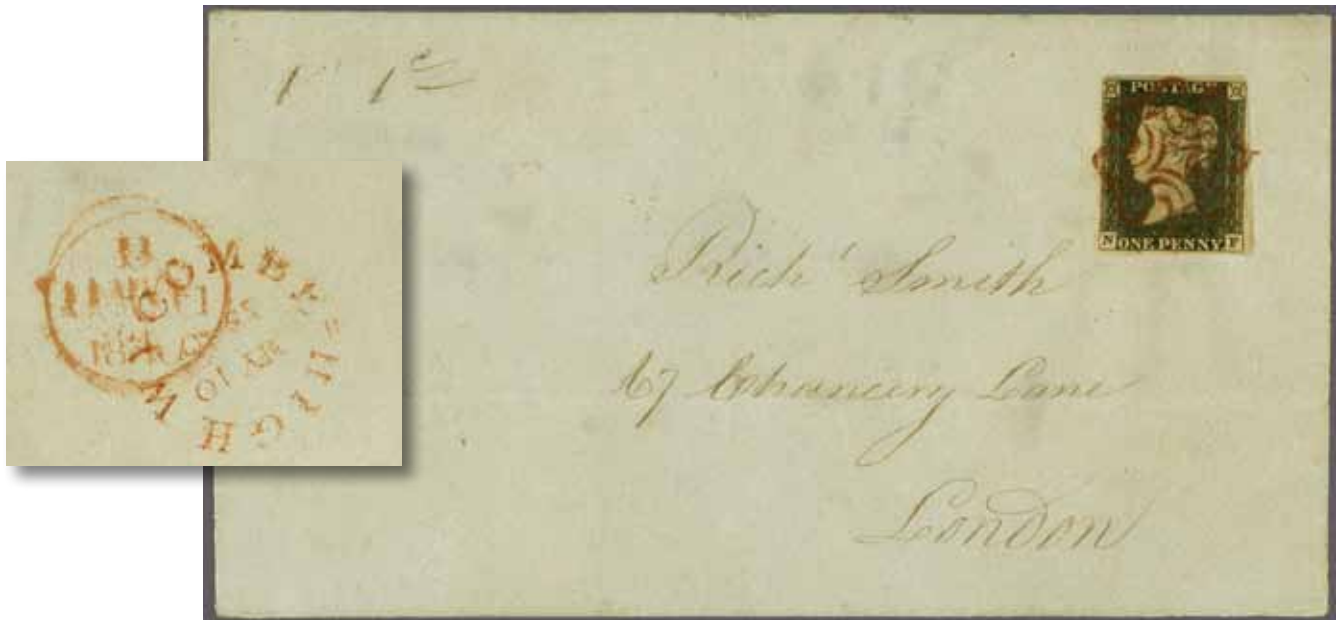
Provenance: Christies Robson Lowe, 13 March, 1990, lot 1130

Christies Robson Lowe, 5 June, 1992, lot 3846

AS2tb

✉

3'000 (€ 3'150)



10029

Gibbons

Start price
in CHF Start price
approx. €

- 10029** **May 10 (First Sunday Usage):** 1d grey black, plate 1a, lettered NF, clear to good margins on three sides, somewhat roughly shaved at left, tied to folded cover to London by red Maltese Cross, postmarked on reverse with red "High Wycombe" despatch (May 10, 1840) and same-day London Chief Office circular morning duty date-stamp, an extremely rare usage, one of only thirteen of this date recorded by Jackson. Gi. AS2te = £35,000.
Reference: Illustrated in "May Dates", by Michael Jackson, 1999.
Provenance: Robson Lowe, 19 March 1942, lot 71
Ex. "A Continental Philatelist" Collection, Stanley Gibbons, 16 November, 1972, lot 300
Phillips, 25 November, 1982, lot 147
Collection Nigel Howard, Christies Robson Lowe, 14 June, 1995, lot 704

AS2te

**5'000** (€ 5'250)

10030



10031

- 10030** **12 May:** 1d grey-black, plate 1a, lettered OL, margins just touching at lower corners to good at top, tied to folded entire to Ballymoney by bright orange Maltese Cross, postmarked on reverse with "Liverpool" double-arc c.d.s. (May 12), next-day Dublin diamond date-stamp, filing folds well clear of adhesive, a desirable early usage to Ireland. Gi. AS2tf = £3,250.
- 10031** **May 15:** 1d black, plate 1a, lettered LD, large margins on three sides, clear at foot, tied to wrapper to London by red Maltese Cross, reverse with black Coventry circular despatch strike and adjacent London circular receiver (15 May, 1840) in red, heavy vertical filing fold, else a fine early May example. Gi. AS2tf = £3,250.

AS2tf

**500** (€ 525)

AS2tf

**350** (€ 370)



10032



10033

- 10032** **May 16:** 1d. grey-black, plate 1a, two singles, lettered IB and IC, margins chiefly good though close in places, tied to large piece by bold red Maltese Cross, with London octagonal PD datestamp (May 16), some staining to adhesives, but a scarce May date. Gi AS21f.
- 10033** **May 18,** 1d. black, plate 2, lettered LA, three good to large margins, cut into at left, tied to part folded cover by red Maltese Cross, Brentwood double-arc despatch backstamp (18 May, 1840), a scarce May franking. Cert BPA (1971). Gi AS14th.

Gibbons	Start price in CHF	Start price approx. €
AS21f	△	300 (€ 315)
AS14th	☒	300 (€ 315)



10034



10035

- 10034** **May 20:** 1d. intense black, plate 1a, lettered RF, large balanced margins on all sides, tied by red Maltese Cross to folded entire from London to Gloucester, internally dated 20 May, partial Lombard Street despatch marking on reverse, light horizontal filing fold clear of adhesive, a charming cover. Gi AS1th = £2,500.
- 10035** **24 May (Third Sunday of Use):** 1d. grey-black, plate 1a, lettered NE, tied to folded cover from Glasgow to Edinburgh by red Maltese Cross, reverse with Glasgow heptag despatch strike (23 May, 1840) and next-day Edinburgh morning duty c.d.s. receiver "MAY 24 1840", traces of toning spots, a few on adhesive, filing folds clear of stamp, else a fine and scarce May usage sent within Scotland. Gi AS21j = £6,000.

AS1th	☒	450 (€ 475)
AS21j	☒	800 (€ 840)

1840, 1d. black, plate 1A



10036



10037



10038

Gibbons

Start price
in CHF Start price
approx. €

10036 1d. intense black, plate 1a, lettered EH, an unused (regummed) example with good to large margins, pleasing deep colour consistent with an early impression, attractive and rare. Gi. AS1 = £24,000.

AS1 (*) **1'500** (€ 1'575)

10037 1d. grey-black, plate 1a, lettered GB, large margins all around, a late example showing heavy plate wear, neatly cancelled with orange-red Maltese Cross, barest trace of thin near top, not detracting from this otherwise lovely stamp. Gi. AS3 = £525

AS3 **120** (€ 125)

10038 1d. grey-black, plate 1a, lettered KJ, large to very large margins all around, a late example showing heavy plate wear, neatly cancelled with orange-red Maltese Cross, remarkably fresh and fine. Gi. AS3 = £525

AS3 **150** (€ 160)

10039



ex 10040



ex 10041



ex 10042

10039 1d. grey-black, plate 1a, lettered OC, good to large margins, a late example showing heavy plate wear, cancelled with neatly-struck Maltese Cross in red, a fine stamp. Gi. AS2 = £525

AS3 **150** (€ 160)

10040 1d. black, plate 1a, four used examples, lettered HB, HD, OA, and PB, all but OA being four-margin examples, varying degrees of little to moderate plate wear, each cancelled by red or black Maltese Cross and showing the original re-entries, OA tied to small piece and additionally cancelled in manuscript, a chiefly fine group, difficult to assemble. Cert Philatelic Expertising (Great Britain) Ltd for OA (1993). Gi. AS1b/AS2b = £2,200.

AS1b **350** (€ 370)

10041 1d. intense black, plate 1a, group of six used singles and one pair, lettered FL, HF, NI, NL, QB, GE, and LK-LL, each a four-margin example with chiefly very good margins, and being early printings showing little plate wear, chiefly cancelled with red Maltese Cross, some small imperfections or close margins, the pair with crudely-repaired lower right corner, else a pleasing assembly with many fine stamps. Gi. AS1 = £5,400.

AS1 **600** (€ 630)

10042 1d. black, plate 1a, group of eight used singles, lettered FD, FK, GE, HH, LI, JL, SI, and TE, each a four-margin example cancelled by red Maltese Cross and showing moderate plate wear, the odd small fault or close margin, HH and JL show some uniform toning, a mostly fine assembly. Gi. AS2

AS2 **500** (€ 525)

10043

10043 1d. intense black, plate 1a, horizontal strip of four, lettered OA - OD, chiefly good to large margins, close in places at foot, an early impression beginning to show traces of plate wear, all showing the 10 o'clock and 5 o'clock ray flaws, cancelled with multiples strikes of red Maltese Cross, horizontal crease in margin between OB and OC, small thin to OC, otherwise fine and scarce multiple. Gi. AS1 = £3,600.

*Provenance: Christies, 10 July 1984, lot 2093; Spink, 17 December 1997, lot 1400
FC.Moldenhauer AS Bergen, Norway, 24-25 November 2000, lot 269.*

AS1 **400** (€ 420)



10044

Gibbons

Start price
in CHF Start price
approx. €

- 10044** 1d. grey-black, plate 1a, reconstructed block of four, made up from two vertical pairs NA-OA and NB-OB, lettered NA-OB, chiefly ample to very good margins, showing moderate plate wear, position OA with characteristic re-entry, imperfections and repairs but still an attractive item with a good visual appeal, rare multiple. Gi. AS2 = £24,000.

*Provenance: (as a reconstructed block of six NA-OC): Ex. Sugden Collection, Harmer, London, 8-9 January 1951, lot 38
Stanley Gibbons, 23-24 May 1996, lot 1385.*

AS2

田

300 (€ 315)

1840, 1d. black, plate 1B



10045



10046



10047

- 10045** 1d. intense black, plate 1b, lettered BC, unused, without gum, margins good to clear, deep shade consistent with an early impression, black mark on reverse, small thin spots, cleaned of soiling. Cert. RPSL (2023). Gi. AS4 = £17,500.

AS4

(*)

500 (€ 525)

- 10046** 1d. black, plate 1b, lettered CI, good to large margins, tied to piece by superbly-struck Maltese Cross in red, with dot in centre, a fine example. Gi. AS5 = £375

AS5

△

150 (€ 160)

- 10047** 1d. grey-black, plate 1b, lettered FA, four large to very large margins, showing moderate plate wear, neatly-struck Maltese Cross in red, a superb example, very fine. Gi. AS6 = £500.

AS6

150 (€ 160)

10048



10049



ex 10050

- 10048** 1d. black, plate 1b, lettered EK, four large even margins, tied to small piece by black Maltese Cross, fresh and fine. Gi. AS5 = £375.

△

150 (€ 160)

- 10049** 1d. black, plate 1b, lettered OL, four large margins, showing partial sheet inscription at right, lightly-struck Maltese Cross in red, a few trivial thins in sheet margin, not detracting from the desirability of this otherwise very fine stamp. Gi. AS5 = £375

150 (€ 160)

- 10050** 1d. black, plate 1b, eight used singles, lettered AJ, CE, FD, IF, OI, PE, SB, and SF, all with four-margins and struck with red Maltese Cross cancels, the stamps showing varying clarity of impression, the odd close margin or imperfection, several fine examples. Gi. AS5.

AS5

500 (€ 525)



ex 10051



ex 10052

- 10051** 1d. black, plate 1b, seven singles, lettered GH, HK (2), GC, JC, MK, and QL, each with four mostly good margins, close in places, cancelled with Maltese Cross in red or black, each with the non-coincident re-entry showing portions of the original impression, the occasional minor flaw not detracting from this challenging group. Gi. AS5b.
- 10052** 1d. black (4) lettered BF, CF, FL, and NA, and 1d. red (2), lettered FD and NC, plate 1b, six singles, each cancelled with black Maltese Cross, the black stamps each with four chiefly fair to good margins, the red examples with at least one close margin, NA with small central pinhole, else a fine group. Gi. AS5.

Gibbons

Start price
in CHF Start price
approx. €

AS5b

800 (€ 840)**500** (€ 525)

10053

*J. B. Seymour*

- 10053** 1d. black, plate 1b, vertical strip of three, lettered BE-DE, margins good to large all around, cancelled with three strikes of red Maltese Cross, fresh appearance, a very fine and beautiful multiple. Gi. AS5 = £1,025 as singles.
Provenance: J.B. Seymour Collection, Robson Lowe, 7 November 1951, lot 59 (DE small defect).

400 (€ 420)

10054

- 10054** 1d. black, plate 1b, horizontal strip of four, lettered CI-CL, margins chiefly good to large, clear at lower left, neatly-cancelled with red Maltese Crosses, CL showing re-entries in NW and SE squares and through value, a fine and scarce strip of great beauty. Gi. AS5 = £2,500+

AS5

450 (€ 475)



10055



10057

Gibbons

Start price
in CHF Start price
approx. €

- 10055** 1d. black, plate 1b, block of four, lettered SG-TH, margins chiefly fair to good though touching in places, affixed to piece and cancelled by red Maltese Cross, Arundel double-arc c.d.s. (Aug 13) struck at left, positions SG-SH showing thinner than usual top frame lines, a scarce block. Gi. AS5 = £18,000.

Provenance: J. B. Seymour Collection, Robson Lowe, 30 April 1952, lot 91

Robson Lowe, 12-13 April 1978, lot 199

Habsburg, Feldman, 27 November to 1 December 1989, lot 30058

Zev Barak Collection, exhibited London International Exhibition, 2000.

AS5 △田 **1'000** (€ 1'050)

10056

- 10056** 1d. black, plate 1b, horizontal strip of six, lettered LG-LL, margins chiefly fair to good, touching in places, tied to folded entire letter to Edinburgh by black Maltese Crosses, reverse with boxed Prestonkirk despatch strike (4 Mar), same-day circular Edinburgh receiver, LH crossed by vertical filing fold, a rare franking, paying the 6d. rate for up to three ounces. Cert BPA (2010). Gi. AS5.

Provenance: Robson Lowe, 6 March 1963, lot 366

Robson Lowe Christies, 7 May 1992, lot 1089

Cooley Collection, Shreves, 23 September 1995, lot 203

Alan Holyoake Collection (2013).

AS5 ☒ **2'500** (€ 2'625)

- 10057** 1d. black, plate 1b, lettered CE, margins large at top and bottom, clear to into at sides, and 1d red, plate 11, lettered LL, tied to mourning cover to Lansdowne by two Maltese Cross strikes in black, red London Inland Office morning duty despatch on reverse (26 Mar), cover with tear at left, and uncommon rate for such a small envelope, paying for a weight greater than 1/2oz, scarce as such, with Simpson and Louis listing only ten such usages, this example being unrecorded. Cert. Mike Jackson (2022). Gi. AS5 / AS74.

AS5/AS74 ☒ **450** (€ 475)

1841, 1d. red, printed from "black plate 1"



10058



10059



ex 10060



10062

		Gibbons	Start price in CHF	Start price approx. €
10058	1d. red brown, plate 1b, lettered GA, good to large margins all around, cancelled with black Maltese Cross, showing non-coincident re-entry, very fine. Gi. AS7b = £475	AS7b	120	(€ 125)
10059	1d. red brown, plate 1b, lettered PB, margins good to large, centrally-struck with bold Maltese Cross in black, very fine. Gi. AS7 = £375.	AS7	120	(€ 125)
10060	1d. red brown, plate 1b, four singles, lettered EL, DB, DC, and QK, most with four good margins, EL touching at lower left but showing portion of sheet inscription at right, each cancelled with black Maltese Cross, DB and DC showing the roller flaw in left star, QK ex-Wheeler, the odd small flaw, an otherwise fine group. Gi. AS7, AS7g, AS7k = £1,575	AS7	200	(€ 210)



10061



Alan Holyoake

10061	1841, 1d. red-brown, block of six, lettered MB-ND, stamps MD and ND being plate 1c, the remaining plate 1b, very good to large margins all around, cancelled with neatly-struck Maltese Crosses in black, trivial scissor cut at left in margin only, pleasing rich colour, an exceptional and important block, the largest recorded used block from this plate in private hands. Cert. BPA (2010). Gi. AS7/AS8 <i>Provenance: Collection "Mayflower" Collection Alan Holyoake, National Grand-Prix, London International Stamp Exhibition, 2015.</i>	AS7/8	田	4'000	(€ 4'200)
10062	1d. red-brown, plate 1c, lettered TC, margins chiefly good to large, showing non-coincident re-entry of this position, cancelled with centrally-struck Maltese Cross in black, leaving many of the distinguishing re-entry characteristics clear, some light uniform paper toning, else a fine and scarce stamp. Gi. AS8a = £800	AS8a		180	(€ 190)

1840, 1d. black and red, plate 1A/1B/1C, "matched pairs and triplets"



10063

Gibbons

Start price in CHF Start price approx. €

10063 1d. black, plate 1a and plate 1b., each lettered NL and struck with black Maltese Cross, margins mostly good to large, with State A close but clear at lower right, together with 1d. red brown, plate 1b, lettered NL, with slight central wrinkle and spots on reverse, otherwise a fine matched trio. Gi. AS2, AS5, AS7 = £1,125.

AS2, AS5, AS7

200 (€ 210)

1840, 1d. black, plate 2



10064

10064 1d. black, plate 2, lettered SG, imprimatur from the first registration sheet, un gummed on white wove paper, good even margins all around, fine and rare. Cert RPSL (1994). Gi. = £15,000
Provenance: Collection Trivett, Plumridge & Co, 6-7 November, 1924, lot 83.
Harmer, Rooke, 19-20 February, 1959, lot 7
Collection Chartwell, Spink London, 16 February, 2012, lot 69
Collection J.E. Safra, Spink London, 5 May, 2014, lot 1031

(*) **4'000** (€ 4'200)



10065



10066



10067



10068

10065 1d. black, plate 2, lettered AI, four very good balanced margins, cancelled with light Maltese Cross in red, a fine stamp. Gi. AS14 = £375

10066 1d. black, plate 2, lettered HD, four good to large margins all around, cancelled with red Maltese Cross, very fine. Gi. AS14 = £375

10067 1d. black, plate 2, lettered HF, four large even margins, cancelled with red Maltese Cross, a lovely stamp. Gi. AS14 = £375

10068 1d. black, plate 2, lettered OK, four very good balanced margins, centrally-struck Maltese Cross in red, fine. Gi. AS14 = £375.

AS14

120 (€ 125)

AS14

150 (€ 160)

AS14

150 (€ 160)

AS14

120 (€ 125)



10069



ex 10070



ex 10071

- 10069** 1d. grey-black, plate 2, lettered SL, very large margins including sheet margin at right, portion of adjoining stamp showing at top, cancelled with red Maltese Cross, a striking stamp. Gi. AS15 = £500.
- 10070** 1d. black, plate 2, five used singles, lettered AC, FL, HD, LB and NL, almost all with good to large margins, AC close at foot though showing portion of adjoining stamp at top, each cancelled with red Maltese Cross, the occasional trivial flaw, an overall fine and pleasing group. Gi. AS14 = £1,875.
- 10071** 1d. black, plate 2, group of four used singles, lettered CE, DB, II, and PI, each with four mostly good margins and cancelled with Maltese Cross in black, PJ with slight toning at right, else a fine group. Gi. AS14.

Gibbons

Start price in CHF *Start price* approx. €

AS15

150 (€ 160)

AS14

400 (€ 420)

AS14

300 (€ 315)



ex 10072

- 10072** 1d. black, plate 2, thirteen used singles, lettered KA, CA, OJ, AL, BE, CA, DJ, EI, HB, LB, QF, RF, and TL, almost all with four good or superior margins all around, each struck in red with Maltese Cross, the odd small flaw, but an overall fine or better group, nicer than often seen. Gi. AS14.

1'000 (€ 1'050)



ex 10073

- 10073** 1d. black, plate 2, three used singles, one pair, and one strip of three, lettered TF, CE, GI, IK-IL, and ND-NF, margins mostly ample to good, selected for postmark interest, with TE struck with Maltese Crosses in red and black, CE with Scottish numeral 139 of Falkirk, GI with red Maltese Cross and manuscript mark, the strip with bold Maltese Crosses in red and Totness double-arc, three tied to piece, some small faults, the pair with corner crease, an unusual group. Gi. AS14 = £4,000+
Provenance: (CE with Scottish numeral 139 of Falkirk): Martin Townsend, December 2002

AS14

400 (€ 420)



10074

Gibbons

Start price in CHF Start price approx. €

10074 1d. black, plate 2, horizontal pair, lettered HC-HD, good to large margins all around, neatly-cancelled with two strikes of Maltese Cross in red, a fresh and fine used pair. Gi. AS14 = £1,250

250 (€ 265)



10075

10075 1d. black, plate 2, horizontal strip of eight, lettered BE-BL, mostly clear to good margins all around, touching at lower right, creases, vertical on BF and BK and in the corners of BE and BL, yet a very rare strip of great appeal; the second largest used strip recorded in the Karl Louis Card Index. Cert. RPSL (2023). Gi. AS14 = £5,000+

*Provenance: Collection Sugden, Harmers of London, 8-9 September, 1951, lot 83
Robson Lowe, 13 October, 1959, lot 332.*

AS14

田

1'000 (€ 1'050)



10076

10076 1d. black, plate 2, block of eight, lettered EE-FH, clear to large margins all around, multiple strikes of red Maltese Cross, EE-EF and EG-FG with crease, the former partially rebacked, EH with small tear at top, EE with stain at top, other small faults, nevertheless a rare multiple with great visual appeal. Cert RPSL (1984) and BPA (2001), Gi. AS14.

*Provenance: Collection "Magnificent", Harmers of London, 24-5 April, 1950, lot 27
Collection H.O. Fraser, Spink London, 7 November 2001, lot 131*

AS14

田

4'000 (€ 4'200)



10077

Gibbons

Start price in CHF Start price approx. €

10077 1d. black, plate 2, lettered DK, margins ample to large, tied to folded cover by red Maltese Cross, Ipswich despatch backstamp in black (16 December, 1840) and next-day London c.d.s. receiver, adhesive with slight discoloration at foot, else a fine and fresh cover. Gi. AS14 = £750

AS14



120

(€ 125)



View of Coleraine



10078

10078 1d. black, plate 2, block of four, lettered AG-BH, margins cut into at top, otherwise clear to ample, tied to folded entire by red Maltese Cross cancellations, posted locally within Coleraine, with two double-arc datestamps (23 June, 1840) struck on front, heavy vertical filing fold resulting in splitting which has been reinforced internally, a rare franking and internal (local!) Irish usage. Gi. AS14.

Provenance: Collection Litchfield, Robson Lowe, 26 March, 1947.

Collection W. Knox, Edgar Mohrmann & Co, 18-21 October, 1977, lot 2131.

AS14



2'000

(€ 2'100)

1840, 1d. red, printed from "black" plate 2



10079



10080



10081

Gibbons

Start price
in CHF *Start price*
 approx. €

- 10079** 1d. red-brown plate 2, lettered BA, four chiefly good to large margins, close at lower right, showing 7 o'clock and 10 o'clock ray flaws, cancelled with bold strike of black Maltese Cross, fine. Gi. AS17 = £325.
- 10080** 1d. red-brown, plate 2, lettered KF, good to large margins all around, showing 7 and 10 o'clock ray flaws consistent with early red printings from this plate, bright colour, cancelled with black Maltese Cross, fine. Gi. AS17 = £325
- 10081** 1d. red-brown, plate 2, horizontal pair, lettered EG-EH, four good to large margins all around, showing the 7 o'clock ray flaw only, left well clear by black Maltese Cross cancellations, very fine, an attractive and scarce multiple. Gi. AS17 = £800.

AS17

100 (€ 105)

AS17

100 (€ 105)

AS17

250 (€ 265)

10082

- 10082** 1d. red-brown, horizontal strip of four, lettered TB-TE, chiefly good margins on all sides, touching at lower right, cancelled with strikes of Maltese Cross in black, TC, TE being from State 2, showing stronger engraving on face and burr lines in margins, ironed out creases, but a scarce multiple. Cert. RPSL (2023). Gi. AS17, AS17b = £1,750+

AS17,
AS17b**160** (€ 170)

1840, 1d. black and red, plate 2, "matched pairs"



10083

- 10083** 1d. black and 1d. red-brown, each plate 2 and with four good to large margins, showing distinguishing re-entry marks in letter squares and corner squares, cancelled with Maltese Crosses in red or black, a scarce and attractive matched pair. Gi. AS14a, AS17a = £1,100

AS14a,
AS17a**250** (€ 265)

1840, 1d. black, plate 3



10084



10085

- 10084** 1d. black, plate 3, lettered DI, unused, without gum, four good to large margins all around, a fine and rare example. Cert. RPSL (2023). Gi. AS20 = £20,000
- 10085** 1d. black, plate 3, lettered FI, four very good to large margins, neatly-cancelled with red Maltese Cross, a superb example, very fine. Gi. AS20 = £500.

Gibbons

Start price
in CHF Start price
approx. €

AS20

(*)

1'500 (€ 1'575)

AS20

180 (€ 190)

ex 10086



ex 10087

- 10086** 1d. black, plate 3, six used singles, lettered DJ, GA, GC, HG, EJ, and SF, each with chiefly four good to large margins, cancelled with red Maltese Cross, the occasional example with subtle fault but an overall fine and desirable group, superior to what is often encountered. Gi. AS20 = £3,000.
- 10087** 1d. black, plate 3, seventeen used singles, lettered AC, AJ, CJ, EA, EL, (2), HC, HG, HI, KE, NA, OD, OJ, OK, PC, SC, and TK, all with four chiefly fair to good margins and cancelled with red Maltese Cross, HK and KE affixed on piece and jointly cancelled in manuscript, with partial Houghton-Le-Spring straight-line below, a few examples showing signs of plate wear, the occasional stamp with small imperfection, but chiefly fine and useful lot for further study. Gi. AS20, AS21 = £8,500

AS20

600 (€ 630)

AS20, AS21

1'000 (€ 1'050)

10088

- 10088** 1d. black, plate 3, horizontal strip of three, lettered QA-QC, three very large margins including sheet margin at left and showing portion of adjoining stamp at right, lower margin close in places, cancelled with neatly-struck Maltese Crosses in red, QB with light crease, a scarce multiple with tremendous appeal. Gi. AS20 = £2,200+
- Provenance: *This strip appeared in each of the following sales as a strip of four, from which position QD was later removed.*
H.R. Harmer, 7-8 April, 1941, lot 496.
Robson Lowe, 26 February, 1969, lot 1046
Collection "Daisy", Christies Robson Lowe, 8 October, 1996, lot 211
Collection Sayeed, Spink London, March 2022, lot 2171

AS21

500 (€ 525)



10089



10090

- 10089** 1d. black, plate 3, lettered CE, clear to good margins, tied to folded cover to Carlisle by red Maltese Cross, reverse with neatly-struck Penrith double-arc c.d.s. in blue (18 June, 1840) a fresh and attractive cover. Gi. AS20 = £1,000
- 10090** 1d. black, plate 3, lettered KC, three large margins, close but clear at right, cancelled with red Maltese Cross, on folded cover to Dunbarton, with boxed receiver datestamp (14 July, 1840) on reverse, tears from removal of sale, adhesive with some light stains, else a fine use to Scotland. Gi. AS20 = £1,000

Gibbons	Start price in CHF	Start price approx. £
AS20 ☒	200	(€ 210)
AS20 ☒	120	(€ 125)

1840, 1d. black, plate 4



10091



10092



10093

- 10091** 1d. intense black, plate 4, lettered TD, unused, part gum heavily hinged, three good to large margins, touching at right, showing small portion of sheet margin inscription at foot, small thins, soiled lower left, despite its flaws a scarce unused example. Cert. RPSL (2023). Gi. AS22 = £18,000
- 10092** 1d. black, plate 4, lettered KD, chiefly good to large margins, close at lower right, cancelled with black and a faint red Maltese Cross, horizontal crease, otherwise fine appearance. Gi. AS23vk = £1,500
- 10093** 1d. black, plate 4, lettered SL, good to very large margins, showing portion of adjoining stamp at top and with sheet margin at right, light Maltese Cross cancellation in red, a lovely stamp. Gi. AS23 = £400+

AS22 (*)	800	(€ 840)
AS23vk	100	(€ 105)
AS23	400	(€ 420)



ex 10094



10095

- 10094** 1d. black, plate 4, three singles, lettered FA, LB, and RC, each cancelled with black Maltese Cross, FA and LB with trivial imperfections, else a fine trio. Gi. AS23 = £1,200
- 10095** 1d. black, plate 4, horizontal pair, lettered CH-CI, large margins all around, cancelled with red Maltese Crosses, a fresh and very fine pair of great attractiveness. Gi. AS23 = £1,250

AS23	200	(€ 210)
AS23	300	(€ 315)



10096

Gibbons

Start price
in CHF Start price
approx. €

- 10096** 1d. black, plate four, horizontal strip of four, lettered CG-CJ, mostly good to large margins all around, just clear at lower left, cancelled with multiple strikes of Maltese Cross in red, light surface abrasion crossing CG-CH, yet a scarce and pleasing multiple. Gi. AS23 = £2,500+
Provenance: Robson Lowe, 8-9 July, 1975, lot 114
Collection Jack Clark, Cavendish, 13 June, 1997, lot 28

AS23

300 (€ 315)

10097



10098

- 10097** 1d. black, plate 4, lettered LB-MC, large even margins on all sides, tied to piece by red Maltese Crosses, a most attractive and scarce multiple. Cert. E. Diena (1999) and RPSL (2023). Gi. AS23 = £18,000.
- 10098** 1d. black, plate 4, block from two rejoined pairs, lettered PG-QH, mostly good to large margins, shaved at right, cancelled with cleanly-struck Maltese Crosses, QG thinned at lower right and with vertical crease, scissor cut between top pair, a fine-appearing multiple. Gi. AS23 = £2,500+
Provenance: Robson Lowe, Harmers, 1 March, 1983, Lot 106

AS23

田 **1'500** (€ 1'575)田 **800** (€ 840)

10099



View of Cheltenham

- 10099** 1d. black, plate 4, lettered CC, margins fair to large, tied to folded cover to Cheltenham, cancelled with red Maltese Cross, ideal Bromyard double-arc despatch c.d.s. on front (30 May, 1840), equally-clear next-day Bromyard receiver further tying adhesive, light filing folds of no importance, a lovely and very early use of this plate, the first example recorded being a week prior to this cover, and a rare Sunday cancellation. Gi. AS23 = £850+
Provenance: Stanley Gibbons, 8-9 November, 1973, lot 319
Collection Chartwell, Spink London, 29 June 2011, lot 1112.

✉ **700** (€ 735)



10100



10101

Gibbons

Start price
in CHF Start price
approx. €

- 10100** 1d. black, plate 4, lettered HI, four ample to large margins, tied to folded entire to Warrington by red Maltese Cross and Hull double-arc datestamp (30 May, 1840), some light wrinkling to cover mentioned for strict accuracy, an impressive entire with adhesive tied by town cancel, postmarked on the final Saturday of May, and little more than one week after the earliest recorded usage of this plate. Cert. RPSL (1992). Gi. AS23tj = £2,000+
Provenance: Collection Michael Lea (1978)

Collection Shaida, Harmers of Switzerland, 13 February, 1992, lot 182.

- 10101** 1d. black, plate 4, two singles, lettered SA and TJ, with good to large margins, SA touching at upper left, both affixed to folded entire from Bath to Cardiff, each tied by crisp red Maltese Cross, reverse with neatly-struck Bath double-arc despatch c.d.s. (8 June, 1841), a lovely and scarce usage to Wales, remarkably fresh and fine. Cert. RPSL (2023) Gi. AS23.

AS23tj

**600** (€ 630)

AS23

**500** (€ 525)

1840, 1d. black, plate 5



In the printing room of Perkins Bacon & Co.



10102

- 10102** 1d. black, plate 5, imprimatur from the second registration sheet, lettered SH, unused, without gum as are all examples, margins ample to large, trivial wrinkle at lower left mentioned for strict accuracy, deep colour, a fine and rare example of this imprimatur, one of only twenty three examples removed from the sheet. Cert RPSL (1966). Gi. = £15,000.
Provenance: H.R. Harmer, 21 - 28 September, 1925, lot 353 or 354.
H.R. Harmer, 3-4 October, 1966, lot 105

(*) **4'500** (€ 4'725)



		Gibbons	Start price in CHF	Start price approx. €
10103	1d. black, plate 5, lettered MC, unused without gum, margins clear to large, small thin at top, otherwise fine. Gi. AS25 = £12,500	AS23 (*)	600	(€ 630)
10104	1d. black, plate 5, lettered AE, ample to large margins, with sheet margin at top showing partial "...abels ABOVE the..." inscription, cancelled with red Maltese Cross, an impressive single, fine. Gi. AS25 = £375+.	AS25	180	(€ 190)
10105	1d. black, plate 5, lettered DK, four very good even margins, cancelled with Maltese Cross in red, fine. Gi. AS25 = £375.	AS25	120	(€ 125)
10106	1d. grey-black, plate 5, lettered GA, four very good to large margins, showing traces of plate wear, cancelled with red Maltese Cross, most attractive. Gi. AS26 = £500.		150	(€ 160)
10107	1d. black, plate 5, lettered QH, four large balanced margins, cancelled with neatly-struck Maltese Cross in red, a pleasing example, very fine. Gi. AS25 = £325.	AS25	120	(€ 125)
10108	1d. black, plate 5, lettered TA, four large to very large margins, showing portion of adjoining stamp at right, cancelled with Maltese Cross in red, a superb stamp. Gi. AS25 = £375.	AS25	200	(€ 210)



10109	1d. black, plate 5, six singles, lettered DI, ED, LK, RH, and SJ (2), each with four mostly good margins and cancelled with red Maltese Cross, the odd trivial imperfection, but a chiefly fine group. Gi. AS25 = £2,250	AS25	400	(€ 420)
10110	1d. black, plate 5, nine used singles, lettered CJ, CK, DI, JA, MG, NC, NF, SH, and SJ, each with four mostly good or better margins and cancelled with black Maltese Cross, the occasional small corner crease or stain, an otherwise chiefly fine assembly. Gi. AS25 = £3,375	AS25	500	(€ 525)
10111	1d. black, plate 5, horizontal pair, lettered GF-GH, margins close to large, cancelled with black Maltese Crosses, fine. Gi. AS25 = £1,250	AS25	300	(€ 315)



10112



10113

10112	1d. black, plate 5, horizontal pair, lettered TD-TE, four clear to large margins, including sheet margin at foot, cancelled with neat strikes of red Maltese Cross, bare traces of small imperfections near top, of fine appearance. Gi. AS25 = £1,250.	AS25	200	(€ 210)
10113	1d. black, plate 5, horizontal strip of three, lettered NE-NG, good to large margins all around, cancelled with multiple strikes of Maltese Cross in red, a lovely multiple. Cert RPSL (2005). Gi. AS25 = £1,625+		250	(€ 265)



10114



10115

Gibbons

Start price in CHF Start price approx. €

- 10114** 1d. black, plate 5, block of four, lettered PA-QB, PB in the first (unrepaired) state, margins ample to very good, lightly cancelled by red Maltese Crosses, creases and tiny thins or imperfections, including small repair at left, scissor cut between PB-QB, but a scarce multiple. Gi. AS25 = £18,000
- 10115** 1d. black, plate 5, lettered HF, good to large margins, showing portion of adjoining stamp at foot, tied to large part folded cover by Maltese Cross in back, reverse with York dual-lined c.d.s. despatch (15 April, 1841), to Bedale, fine. Cert RPSL (1986). Gi. AS25 = £775.

AS25



800

(€ 840)



200

(€ 210)

1841, 1d. red, printed from "black plate 5"



10116



10117

- 10116** 1d red-brown, plate 5, lettered GA, four good to large margins, cancelled with unobtrusive Maltese Cross in black, rich colour, fine. Gi. AS32 = £500.
- 10117** 1d. red-brown, plate 5, horizontal pair, lettered KF-KG, large margins all around, cancelled with Maltese Crosses in black, rich colour, small scissor cut and trivial wrinkle to KG, not detracting from the tremendous visual appeal of this otherwise fine pair. Gi. AS29 = £500

AS32

150

(€ 160)

AS29

120

(€ 125)

1840/41, 1d. black and red, plate 5, "matched pairs"



ex 10118

- 10118** 1d. black, plate 5, two singles, and 1d. red-brown, each lettered PB and with mostly good to large margins, the 1d red touching in places, cancelled with Maltese Cross in red or black, illustrating the first three states of this printing, the red in State 3 showing the re-entry, the odd imperfection but an overall fine matched trio. Gi. AS25, AS28, AS32a = £1,425.
Provenance (for 1d. red-brown): Robson Lowe, 21-2 April, 1977, lot 2672
Collection Woods, Harmers, 22 April 1986, lot 229

AS25,
AS28,
AS32a

300

(€ 315)

1840, 1d. black, plate 6



10119



10120



10121



10122



10123



ex 10124

			Start price in CHF	Start price approx. €
10119	1d. black, plate 6, lettered JB, unused, gum redistributed overtop small central pinhole, margins chiefly good all around of fine appearance. Cert RPSL (2017) Gi. AS41 = £13,500.	AS41	500	(€ 525)
10120	1d. black, plate 6, lettered IA, four very large balanced margins, cancelled with Maltese Cross in red, very fine. Gi. AS41 = £375.	AS41	120	(€ 125)
10121	1d. black, plate 6, lettered AA, good margins on two sides, clear at lower right, with partial sheet margins at left and top, showing partial "...PRICE 1d Per L..." inscription and trace of plate number "6" at upper left, fresh deep colour, cancelled with black Maltese Cross, despite two tiny rebacked tears at right a lovely stamp. Gi. AS41 = £375+ <i>Provenance: Harmers, 4-5 July, 1938, lot 406. J.B. Seymour Collection, Robson Lowe, 6 June, 1951, lot 359 Robson Lowe, 6 June, 1951, lot 359. Collection Durham, Phillips, 11 November, 1993, lot 75.</i>	AS41	500	(€ 525)
10122	1d. black, plate 6, lettered QK, four good to large margins all around, cancelled by neat strike of red Maltese Cross, showing distinctive characteristics of the re-entry, very fine. Gi. AS41a = £450.	AS41	150	(€ 160)
10123	1d. black, plate 6, lettered TF, four clear to large margins including sheet margin at foot, showing partial "...Address and tow..." inscription, deep colour, cancelled with red Maltese Cross, lovely and fine. Gi. AS41 = £375.	AS41	120	(€ 125)
10124	1d. black, plate 6, fourteen used singles, lettered BI, DA, DE, GJ, JD (2), JF, JI, KL, MJ, OL, PA, SI, and TL, most with four good margins, cancelled with Maltese Cross in black (5) or red (9), some with small faults, chiefly very good to fine, a useful group for further detailed study of this plate. Gi. AS41 = £5,250	AS41	650	(€ 685)



10125



10126



10127



J. B. Seymour

10125	1d. black, plate 6, vertical pair, lettered EA-FA, clear to large margins, cancelled with red Maltese Crosses, fine. Gi. AS41 = £1,250	AS41	200	(€ 210)
10126	1d. black, plate 6, horizontal strip of 3, lettered HF-HH, good to large margins all around, showing portion of adjoining stamp at left, cancelled with multiple strikes of red Maltese Cross, deep colour and quite attractive. Gi. AS41 = £1,625+ <i>Provenance (as a former strip of four): Harmers, London, 21-23 May, 1951, lot 348.</i>	AS41	250	(€ 265)
10127	1d. black, plate 6, block of four, lettered DG-EH, margins mostly clear to very good, just touching in places, cancelled with black Maltese Crosses, a few light wrinkles, crease to EG with small split near centre, also showing vertical and horizontal guidelines in upper right square, a fine-appearing multiple. Gi. AS41 = £18,000. <i>Provenance: Collection Seymour, Robson Lowe, 11 April 1951, lot 230. Stanley Gibbons, 28 June, 1974, lot 503.</i>	AS41	1'000	(€ 1'050)



View of London



10128

Gibbons

Start price in CHF Start price approx. €

10128 1d. black, plate 6, block of six, lettered GE-HG, good to very large margins all around, showing portion of adjoining stamps to GE and GG, cancelled with multiple strikes of red Maltese Cross, a rare and most attractive multiple. Gi. AS41 = £19,250+

AS41



4'000 (€ 4'200)



10129



10130

10129 1d. black, plate 6, lettered QL, tied by red Maltese Cross to folded entire, with partially printed contents from the Dissenters General Life & Fire Insurance Office in London, to Abingdon, Berkshire, November 7 1840 c.d.s. backstamp, the odd light tone spot, else fine. Gi. AS41 = £775.

AS41



120 (€ 125)

10130 1d. black, plate 6, lettered SF, on folded cover from Bath to Wells, with double-arc despatch backstamp (31 January, 1841), neatly-struck Wells Somerset c.d.s. on front (1 February), returned to Bath, remarkably franked with a second 1d. black, plate 6, SF, and cancelled with red Maltese Cross, a most charming and remarkable cover, for which Robson Lowe is said to have had a "special liking." Gi. AS41.

AS41



400 (€ 420)

1840, 1d. black, plate 7



In the printing room of Perkins Bacon & Co.



10131

Gibbons

Start price in CHF Start price approx. €

10131 1d. black, plate 7, block of four, lettered CK-DL, unused, without gum, mostly good to large margins including sheet margin at right, touched at upper left, showing "O Flaw" Stage 2, fresh colour, an exceptional and rare multiple of great beauty. Cert PTS Expertising Ltd. (2013). Gi. AS46 = £100,000.

Provenance: Robson Lowe, 7 May, 1958, lot 17, originating from "an outstanding collection made by a well-known Fellow of the RPSL."

Robson Lowe, 5 November, 1958, lot 357.

Robson Lowe, 27 June, 1967, lot 100.

Christies, 14 September, 1994, lot 2184.

Collection Forrester, June, 2008.

AS46 ₤(*) **20'000** (€ 21'000)



10132



ex 10133



10134

Gibbons

Start price in CHF Start price approx. €

- 10132 1d. intense black, plate 7, lettered KK, four large even margins, showing re-entry quite pronounced in upper right square and lower margin, cancelled with Maltese Cross in black, very fine. Gi. AS45a = £525+
- 10133 1d. black, plate 7, group of thirteen singles, mostly four-margin examples, lettered EA, FJ, HB, JA, KG, LD, LL, NJ, PJ, QA, RB, TI, and TL, a couple with signs of plate wear, without "O" Flaws, cancelled with red (10) or black (2) Maltese Cross, the occasional small fault, stain, or touched margin, overall very good to fine. Gi. AS46/7 = £5,200+
- 10134 1d. greyish-black, plate 7, horizontal pair, lettered CE-CF, four good to large margins all around, showing various signs of plate wear, cancelled with red Maltese Crosses, fine. Gi. AS47 = £1,400+

AS45a

150 (€ 160)

AS46/7

650 (€ 685)

AS47

250 (€ 265)



10135

- 10135 1d. black, plate 7, horizontal strip of three, lettered GB-GD, mostly good to large margins, close at foot of GC, cancelled with slightly smudged Maltese Crosses in red, fine. Gi. AS46 = £1,800+

AS46

250 (€ 265)



10136



10137

- 10136 1d. black, plate 7, block of four, lettered MK-NL, without "O Flaw", good to large margins, on experimental thin paper, cancelled with multiple strikes of red Maltese Cross, diagonal crease and minor repair, but a fine-appearing block and scarce multiple. Cert. RPSL (2023). Gi. AS46 = £20,000.
Provenance: Collection Shaida, Harmers of Switzerland, 13 February, 1992, lot 256.
- 10137 1d. black, plate 7, block of four, lettered RG-SH, large even margins all around, which have been enhanced with repair to upper left stamp, each stamp neatly-cancelled with red Maltese Cross, stamps showing no "O" Flaw, a rare multiple, of great visual appeal. Cert. RPSL (2023). Gi. AS46 = £20,000.
Provenance: Harmers, 18 November, 1986, lot 15.

AS46c

⊞

1'000 (€ 1'050)

AS46

⊞

750 (€ 790)



10138

Gibbons

Start price in CHF Start price approx. €

- 10138** 1d. black, plate 7, horizontal pair, lettered CJ-CK, good to large margins just close at upper left, affixed to small piece slightly overlapping 2d. blue, plate 1, all tied by red Maltese Cross, paying the 4d. rate for up to two ounces, adjacent Windsor double-arc c.d.s. in red (21 October, 1840), attractive and fine. Gi. AS46, DS5 = £2,375

AS46, DS5

△

1'500 (€ 1'575)

10139

- 10139** 1d. grey-black, plate 7, lettered CA, margins clear to large, showing signs of plate wear and doubling of "C", tied to folded entire by bold Maltese Cross, superb Salisbury c.d.s. despatch strike on front, light horizontal filing fold through adhesive, a quite fresh and most attractive cover. Cert. RPSL (1997). Gi. AS47b = £825+

AS47b

⊠

200 (€ 210)

10140

- 10140** 1d. black, plate 7, block of four, lettered AK-BL, margins mostly close to good, touching at upper left, each adhesive showing "O Flaw" Stage 2, tied to large folded entire by smudged Maltese Crosses in red, reverse with Coventry double-arc despatch c.d.s. (10 January, 1841), to Ashby-de-la-Zouch, some imperfections to block, vertical filing fold and light overall creasing as often seen when such light weight paper is used, a scarce franking.

Gi. AS46 = £20,000 as a used block.

AS46

⊠

800 (€ 840)

1840, 1d. black, plate 8



J. B. Seymour



10141

Gibbons

Start price
in CHF Start price
approx. €

10141 1d. black, plate 8, imperforate imprimatur, lettered TJ, unused, without gum, as always, four good to large margins, showing the major re-entry, pleasing deep colour, one of only twenty three examples removed from the registration sheet, particularly desirable with the re-entry, very fine and rare. Cert RPSL (1974) (Photocopy, also showing the stamp from position TK). Gi. = £18,000+.

Provenance: J.B. Seymour Collection, Robson Lowe, 11 April 1951, lot 86

Robson Lowe, 21 September 1955, lot 113

Collection Cawardine, Spink London, 20 September, 2001, lot 1409.

Collection Severn, David Feldman, 14 April, 2010, lot 20627.

(*) **5'000** (€ 5'250)



ex 10142

10142 1d. black, plate 8, four singles, lettered AL, EH, EJ, and MD, each with four good to large margins and cancelled with red Maltese Cross, EJ tied to piece, the odd small flaw, but a chiefly fine quartet. Gi. AS49 = £2,100.

350 (€ 370)



10143



Charles Nissen

Gibbons

Start price
in CHF Start price
approx. €

10143 1d. black, plate 8, horizontal pair, lettered RA-RB, margins mostly close to very good, touching at upper left, with sheet margin at left, unused with large part original gum, deep fresh colour, once forming part of a re-joined block of twenty-four (RA-TH, TI-TK), creases, yet a scarce and fine-appearing unused pair. Gi. AS49 = £45,000

Remarks: The history of this pair may go back to the year 1917, when Charles Nissen mentioned in THE BRITISH PHILATELIST (Sept. 1917, page 51) the existence of a mint 1d black plate 8 "... corner block of eight, from the lower left corner..." which was at the time the largest mint block known to Nissen. This block must have been a "vertical" block lettered QA/TB, because no horizontal block of eight from the lower left corner has ever been seen. Later, at a date unknown, the block has been reduced to the vertical block of 6, RA/TB, by cutting off QA-QB. The reduced corner marginal block of 6 RA/TB was seen in the 1970s in Michael Lea's collection and then went into Hassan Shaida's collection. In November 1988, "out of the blue", a re-joined block of 21 turned up at Phillips auction consisting of RC/TD, RE/TH and TI-TK. Hassan Shaida realised that his block of six RA/TB originally adjoined the block of 21 to a block of 27, RA/TH plus TI-TK. He bought the block of 21 and re-joined it with his block of 6. A poor photo exists of this re-joined block of 27 (provided to Karl's Card Index by Mike Jackson). Hassan Shaida's collection was sold after the London 1990 International Exhibition. The 'R'- row was then sadly cut from the blocks, including RA-RB, making a re-joined strip of 6, RA-RF, consisting of three pairs (Phillips auction May 1992, lot 291). Later in the mid 1990s, the re-joined strip RA-RF was separated again, the pair RC-RD was cut in singles, the pair RE-RF has not been seen since 1997 and the pair RA-RB finally went into Simon's collection, offered herewith. The remaining three blocks of 4, SA/TB, SC/TD and SE/TF are now forming a re-joined corner block of 12, now housed in a famous collection, and was illustrated in 'Il Collezionista' Italian philatelic magazine in January 2009.

Provenance: (as part of a block) Michael Lea collection (1978)

Hassan Shaida (London 1990)

Grosvenor, 9 December, 1997, lot 134.

AS49 * **4'000** (€ 4'200)

10144



10145

10144 1d. black, plate 8, lettered LA, clear to large margins, including sheet margin at left, showing partial "...ce the Labels ABOVE..." inscription, cancelled with black Maltese Cross, corner crease at lower right, yet a most appealing stamp. Gi. AS49 = £525.

AS49 **150** (€ 160)

10145 1d. black, plate 8, ten used singles, AG, CC, CD, DF, DJ, EF, EH, FA, HH, and HL, all with four margins, all cancelled with Maltese Cross in red, EH tied to piece and also struck with Maltese Cross in black, scarce as such, CD tied to piece by "Almchw Penny Post" in red, a few flaws, CD with horizontal crease, but a chiefly fine group including scarce postmarks.

AS49,
AS49vk,
AS49ya**1'000** (€ 1'050)

Gi. AS49, AS49vk, AS49ya = £6,900



10146



10147

Gibbons

Start price in CHF Start price approx. €

10146 1d. black, seven singles, and 1d. red-brown, one single, all from plate 8, almost all with good or better margins, cancelled with Maltese Cross in either black (4) or red (4), OL (1d black) and PC (1d red) each from the Second State, lacking the "O" Flaw, some small creases or other flaws, yet a chiefly very good to fine group to further examine the intricacies of this plate. Gi = £3,915+

450 (€ 475)

10147 1d. black, plate 8, horizontal pair, lettered SE-SF, good to large margins all around, cancelled with two strikes of Maltese Cross in black, showing Stage 1 of the "O" Flaw, SE with a few small red ink marks near lower left, mentioned for strict accuracy and not noted on accompanying certificate, else very fine and most attractive. Cert RPSL (1982). Gi. AS49 = £1,800.

AS49

300 (€ 315)



10148

10148 1d. black, plate 8, two singles and a pair, reconstructed to form a block of four, lettered IB-JC, large apparent margins all around, cancelled with neatly-struck Maltese Crosses in black, imperfections and repairs at foot in addition to reconstruction, yet of fine appearance and visual appeal. Gi. AS49 = £2,100+

AS49

400 (€ 420)



10149

10149 1d. black, plate 8, four singles, lettered FG, GA, IF and LC, slightly oxidised red Maltese Crosses (giving a brown impression), stamps with some small imperfections. Cert RPSL (2023).

△

400 (€ 420)



10150



10153



10151



10152



10154

		Gibbons	Start price in CHF	Start price approx. €
10150	1d. red-brown, plate 8, lettered AE, unused, large part original gum, three good to large margins, clear at right, rich warm shade, negligible thin mentioned for strict accuracy, otherwise fine, a rare unused example of this plate. Gi. AS51 = £11,000. <i>Provenance: Phillips, 5-7 September, 1979, lot 294. Stanley Gibbons, Spring 1980, lot 374. Phillips, 10 March, 1988, lot 115.</i>			
10151	1d. red-brown, plate 8, horizontal pair, lettered CG-CH, four ample to large margins, cancelled by neat Maltese Crosses in black, a few small spots in margin, otherwise a fine pair in a warm shade. Gi. AS51 = £575.	AS51	*	1'500 (€ 1'575)
10152	1d. red-brown, plate 8, horizontal pair, lettered OK-OL, large margins all around including partial sheet margin at right with trace of inscription, showing Stage 1 "O" Flaw, cancelled with two crisp Maltese Crosses in black, a beautiful pair. Gi. AS51 = £575.	AS51		120 (€ 125)
10153	1d. red-brown, plate 8, vertical strip of five, lettered JF-NF, good to large margins on two sides, into at foot and in places at left, cancelled with black Maltese Crosses, variously creased and other small imperfections, but the only vertical strip from this plate recorded in the Karl Louis Card Index. Gi. AS51 = £1,290+ <i>Provenance: Robson Lowe, 29-30 April 1969, lot 335.</i>	AS51		150 (€ 160)
10154	1d. red-brown, plate 8, block of eight, lettered AJ-BK, mostly good to large margins, touching at lower right and shaved along top of IC-ID, Stage 2 "O" Flaw evident in most stamps, cancelled with eight strikes of Maltese Cross in black, variously creased, faults on IA-IB-IC as can be expected for a used multiple of this size, but an important and rare multiple, the largest used example recorded for this plate. Cert. RPSL (2023). Gi. AS51.	AS51	⊕	600 (€ 630)

1840, 1d. black, plate 9



10155



10156



10157



Gibbons

Start price in CHF Start price approx. €

- 10155 1d. black, plate 9, lettered AB, state I, unused with part original gum, margins fair to good, trivial thins at foot. Cert. RPSL (2023) states "...heavily hinged, part original gum.... surface soiling, subject to condition is genuine.". Gi. AS57 = £20,000.
- 10156 1d. black, plate 9, lettered EL, four close to large margins, including sheet margin at left, with partial "PRI..." inscription and sheet watermark "PO"(STAGE), crisp red Maltese Cross cancellation, fine and attractive. Gi. AS57 = £625+
- 10157 1d. black, plate 9, group of sixteen singles and two pairs, used, almost all with four good margins, cancelled with Maltese Crosses in black or red, showing Stage 2 of the "O" Flaw, which appears on most examples from this plate, JC affixed to small piece with c.d.s. alongside, SL with sheet margin (repaired), some light creases or small flaws, but a chiefly very good to fine group with many attractive cancellations, ideal for further study of this scarcer plate. Gi. AS57 = £13,600

AS57

*

1'200 (€ 1'260)

600 (€ 630)

AS57

1'500 (€ 1'575)



10158

- 10158 1d. black, plate 9, horizontal strip of three, lettered DJ-DL, mostly good to large margins, close but clear in places, lighter shade, showing the "O" Flaw, Stage 2, cancelled with three neat strikes of Maltese Cross in black, slight wrinkle to DL from hinge, a fine and scarce multiple from this plate. Gi. = AS57 = £2,425.
Provenance (as a former strip of four):
Collection "Victoria", Robston Lowe, 14 May, 1975, lot 35
Collection Atkinson, Christies Robson Lowe, 6 November 1990, lot 105.
Stanley Gibbons, 26-7 March, 1998, lot 569.
Grosvenor, 16 March, 1999, lot 230.

AS57

325 (€ 340)



10159

- 10159 1d. black, plate 9, lettered JJ, mostly good margins all around, tied to part folded cover by Maltese Cross in black, struck with blue "Chancery Lane" straight-line, sent within the city to Regent Street, with red London Chief Office receiver on reverse (16 January, 1841), horizontal filing fold, else fine. Gi. AS57 = £1,200.

AS57

✉

150 (€ 160)

1841, 1d. red, printed from "black plate 9"



10160



Dublin's General Post Office

Gibbons

Start price	Start price
in CHF	approx. €

- 10160** 1d. red-brown, plate 9, block of four, lettered PG-QH, good to large margins, touching at left of QG, unused, large part original gum, beautiful rich colour, creases and slight thins including small paper fault in "N" of PENNY on PH yet a rare multiple from the "Dublin Find". Gi. AS59 = £25,000.

Reference: Illustrated in "The Dublin Find", Don Madden and Karl Louis, page 35.

Provenance: "The Dublin Find", Plumridge & Co, 2 March, 1904.

Stanley Gibbons, 7-9 June, 1972, lot 635.

AS59

田*

1'200 (€ 1'260)

10161

- 10161** 1d. red-brown, plate 9, horizontal pair, lettered HK-HL, three good to large margins, including sheet margin at right showing partial "...Per Sheet Plac..." inscription, touching at places at foot, cancelled with two strikes of black Maltese Cross, fresh colour, a scarce marginal pair. Gi. AS59 = £475+

Remark: This pair HK-HL and a single TE are the only sheet marginal used 1d red, plate 9, recorded in the Karl Louis Card Index.

AS59

100 (€ 105)

10162

- 10162** 1d. red-brown, plate 9, horizontal strip of six, lettered OA-OF, cancelled with multiple strikes of black Maltese Cross, small imperfections, OA with crease and OC with small tear at top, attractive bright shade, a rare and fine-appearing multiple, being the second largest used strip from this plate recorded in the Karl Louis Card Index. Gi. AS59 = £1,425+

AS59

400 (€ 420)

1840, 1d. black, plate 10



10164



10165



ex 10166



10167

Gibbons

Start price
in CHFStart price
approx. €

- | | | | | | |
|--------------|---|------|---|--------------|-----------|
| 10163 | 1d. black, plate 10, lettered BC, second state with "O" flaw removed, margins close to large, small part original gum, small creases, but an extremely rare unused example; the only recorded unused second state from the 1d black plate 10 recorded in the Karl Louis Card Index. Cert RPSL (1976). AS68. | AS66 | * | 1'200 | (€ 1'260) |
| 10164 | 1d. black, plate 10, lettered ML, mostly large margins including portion of sheet margin at right, showing ..."In Wetting the..." inscription, cancelled with black Maltese Cross, a few small marks not detracting from this appealing stamp. Gi. AS66 = £950+ | AS66 | | 200 | (€ 210) |
| 10165 | 1d. black, plate 10, lettered QE, four good to large margins all around, cancelled with neatly-struck Maltese Cross in black, fine. Gi. AS66 = £950. | AS66 | | 150 | (€ 160) |
| 10166 | 1d. black, plate 10, five used singles, lettered FE, IF, IG, LB, and QE, each with four mostly good or better margins, FE just touching at right, and cancelled with Maltese Cross in black (2) or red (3), a chiefly fine and desirable group. Gi. AS66 = £4,750 | AS66 | | 650 | (€ 685) |
| 10167 | 1d. black, plate 10, horizontal pair, lettered LD-LE, four good to large margins, close but clear at lower right, cancelled with indistinct Maltese Cross in black, light diagonal crease at upper right does not detract from its otherwise fine appearance, with pairs of this plate being quite scarce. Gi. AS66 = £3,500. | AS66 | | 450 | (€ 475) |



10163



10168

- 10168** 1d. black, plate 10, block of four, lettered EG-FH, large to very large margins all around, including portion of adjoining stamps at right, cancelled with Maltese Crosses in red, a scarce colour on examples from this plate, barest trace of pressed crease, of no consequence for this rare multiple, an important exhibition piece. Gi. AS66.

Provenance: Robson Lowe, 24 January, 1945, as the original E,J-FL block.

Collection "Victoria", Robson Lowe, 14 May, 1975, lot 37, as a block of five "...removed from a cover from Brecon."

Phillips, 7-8 May, 1987, lot 835, as the EG-FH block of four.

Collection Shaida, Harmers of Switzerland, 13 February, 1992, lot 319.

Collection "Tes", Christies Robson Lowe, 5 October, 1995, lot 274.

Collection Pichai Buransombati, Shreves Philatelic Galleries, 15 March, 2001, lot 146.

Collection Sayeed, Spink, May 2002, lot 2299.

AS66

田

4'000 (€ 4'200)



View of Swansea



10169



J. B. Seymour

Gibbons

Start price in CHF Start price approx. €

10169 1d. black, plate 10, horizontal strip of six, lettered OA-OF, margins mostly ample to large, touching in places, tied to large part folded cover from Swansea to Cardiff by black Maltese Crosses, with Cardiff double-arc receiver (1 April, 1841) on front, OA and OD creased, other small flaws as expected with such a franking, rare, believed to be one of only three strips of six on cover extant from this plate of which this is by far the finest. Cert RPSL (2000). Gi. AS66.

Provenance Collection J. B. Seymour; Robson Lowe, 11 April, 1951, lot 285.

Robson Lowe, 20 February, 1957, lot 139.

Collection Hunt, Stanley Gibbons, 21-3 February, 1968.

Collection "Daisy", Christies Robson Lowe, 8 October, 1996, lot 326

Collection Dr. Pichai Buranasombati, Shreves Philatelic Galleries, 15 March, 2001, lot 149

AS66 (✉) **2'500** (€ 2'625)

1841, 1d. red, printed from "black plate 10"



John O. Griffiths



10170

Gibbons

Start price in CHF Start price approx. €

10170 1d. red-brown, plate 10, lettered AB, large margins on three sides, close at right, unused, without gum, with distinctive Stage 3 of the "O" Flaw, a few small tone spots in margin, originally from the AA-AB pair ex-Griffiths. Gi. AS68 = £2,500.
Provenance: John O. Griffiths Collection, Christies, 27 June 1985, lot 4242.

(*) **300** (€ 315)



10171

10171 1d. red-brown, plate 10, upper left corner marginal block of four, lettered AA-BB, showing plate "10" and inscription "PRICE 1d Per Label, 1/- Per Row...", good margins on other sides, unused, remarkably warm rich colour, an exceptional and rare block of tremendous beauty, and an important exhibition piece. Gi. AS68.
*Provenance: E.H. Williams Collection, as part of the famous "Williams Sheet", Harmers, 3-4 February 1938, lot 802
 Phillips, 4 February, 1982, lot 235
 Phillips, 17 February, 1994, lot 322a.*

AS68 田(*) **4'000** (€ 4'200)



10172



ex 10173

- 10172** 1d. red-brown, plate 10, lettered SA, four large to very large margins, including sheet margin at left, showing Stage 2 of the "O" Flaw, cancelled with full strike of Maltese Cross in black, very fine. Cert RPSL (2003). Gi. AS68 = £190+
- 10173** 1d. red-brown, plate 10, twelve singles and a pair, lettered AG, BE, BF (2), CI, FL, GD, GI, JJ, LL, OH, PL, and IL-JL, used, most with four good margins, cancelled with Maltese Crosses in black, showing the progression of the "O" Flaw, with examples from Stage 1, 2, and 3, ranges of shades, the odd small flaw, but an ideal and quite attractive group for study of this printing. Gi. AS68 = £2,780.

Gibbons

Start price
in CHF Start price
approx. €

AS68

100 (€ 105)

AS68

400 (€ 420)

10174



J. B. Seymour

- 10174** 1d. red-brown, plate 10, strip of six, lettered QA-QF, margins chiefly good to large, close but clear at places, cancelled with six clear strikes of Maltese Cross in black, rich colour, minor imperfections as can be expected, a scarce multiple from this difficult plate. Gi. AS66 = £1,500+
Provenance: Collection J. B. Seymour; Robson Lowe, 6 July, 1951, lot 745.

AS68

300 (€ 315)

1840/41, 1d. black and red, plate 10, "matched pairs"



10175

- 10175** 1d. black and 1d red-brown, both plate 10 and lettered JL, chiefly good margins, the black touching at lower left, incredibly showing identical portion of "...the Address and tow..." in right sheet margin, the red trimmed slightly but clear of inscription, the 1d. black with light creases, but a remarkable matched pair. Cert BPA (2008) for the 1d. red. Gi. AS66 = £1,140+
Provenance (for the 1d. black): Collection Sayeed, Spink, May 2022, lot 2302.

AS66, AS68

300 (€ 315)

1841, 1d. black, plate 11



Stamping and sorting letter in London's General Post Office



10176

Gibbons

Start price in CHF Start price approx. €

10176 1d. black, plate 11, horizontal strip of five, lettered MG-MK, mostly good to large margins, cut into at upper right unused, with large part original gum, various creases, and scissor cut at foot between MG and MH but a most rare multiple from this challenging plate. Cert BPA (1988). Gi. AS73 = £120,000.

*Provenance: Robson Lowe, 12 April, 1967, lot 647
264. Heinrich Köhler auction, February 1989
Spink, 9-10 March 2005, lot 26.*

AS73

20'000 (€ 21'000)



10177



10178



10179



10180



10181

10177 1d. greyish-black, plate 11, lettered AH, four large margins all around, cancelled with crisp Maltese Cross in black, an exceptional example of this rare plate, very fine. Cert. RPSL (2023). Gi. AS72 = £4,600.

AS72

1'800 (€ 1'890)

10178 1d. greyish-black, plate 11, lettered DK, four good to large margins all around, cancelled with Maltese Cross in black, a fine example. Gi. AS72 = £4,600.

AS72

750 (€ 790)

10179 1d. grey-black, plate 11, lettered HA, good to large margins all around, showing signs of plate wear, lightly-cancelled with Maltese Cross in black, a fine example of this scarce plate. Gi. AS72 = £4,600.

AS72

800 (€ 840)

10180 1d. greyish-black, lettered HI, mostly large margins all around, clear at upper left, cancelled with black Maltese Cross, fine and scarce. Gi. AS72 = £4,600.

AS72

800 (€ 840)

10181 1d. greyish-black, plate 11, lettered LC, four good to very large margins, showing portion of adjoining stamp at left and top right, centrally-struck crisp Maltese Cross in black, repaired lower margin and right corner, but most impressive appearance. Cert. RPSL (2023) states "...cleaning has resulted in staining the stamp". Gi. AS72 = £4,600.

AS72

400 (€ 420)



ex 10182



10183

Gibbons

Start price
in CHF Start price
approx. €

- 10182** 1d. black, plate 11, group of seven used examples, lettered CK, HA, HE, MB, NE, and QH (2), most with four ample or better margins, showing varying shades of greyish black to black, cancelled with Maltese Crosses in black, most with faults or small imperfections, MB with heavy crease, chiefly very good to fine appearance, and an uncommonly-offered assembly from this rarest of plates. Gi. AS72/3 = £32,200+
- 10183** 1d. black, plate 11, horizontal pair, lettered DE-DF, four apparent good to large margins, cancelled with neatly-struck Maltese Crosses in black, trace of well-executed repair at foot, enhancing margin, crossing both stamps, but a most appealing and scarce pair. Gi. AS73 = £12,000. *Provenance: David Feldman, 3-8 November 1996, lot 21951.*

3'000 (€ 3'150)

AS73

1'500 (€ 1'575)*A street scene of Liverpool*

10184

- 10184** 1d. black, plate 11, lettered IB, chiefly ample margins, touching on two sides, tied to folded entire from Liverpool to Lancaster with black Maltese Cross, reverse with Liverpool c.d.s. despatch strike (23 March, 1841), pressed filing folds, a scarce franking from this plate. Gi. AS73 = £16,000. *Provenance: Robson Lowe, 24-25 November, 1971, lot 1639.*

AS73

**600** (€ 630)

1841, 1d. red, printed from "black plate 11"



10185

Gibbons

Start price in CHF Start price approx. €

10185 1d. red-brown, plate 11, lettered OH, close to mostly good margins, unused, large part original gum, fresh colour, a fine and scarce unused example. Gi. AS74 = £8,500.

AS74

* **1'200** (€ 1'260)



10186



10187



10186 1d. red-brown, plate 11, two singles, lettered AG, on each from State 1 and State 3, both with good to large margins all around, cancelled with black Maltese Cross, the strike on the 1st State example being particularly attractive, small things, else a fine and scarce duo. Gi. AS74, AS75a = £580.

AS74, AS75a

120 (€ 125)

10187 1d. red-brown, plate 11, nineteen singles and a pair, almost all four margin examples, one with sheet margin at right, each cancelled with Maltese Cross in black, ranges of shades, the occasional flaw, most attractively cancelled and with fresh appearance, a chiefly fine group for further detailed study of this challenging plate. Gi. AS74 = £2,770.

AS74

300 (€ 315)



10188

10188 1d. red-brown, plate 11, horizontal strip of four, lettered PA-PD, close to large margins, cancelled with multiple strikes of black Maltese Cross, PD shows duplication to design at foot, recorded as a re-entry by Lichfield, rich deep colour, fine. Gi. AS74var = £600+

AS74

150 (€ 160)



10189

10189 1d. red-brown, plate 11, block of four, lettered MA-NB, margins chiefly good to large, cut into at lower left but showing portion of adjoining stamp at top, cancelled with black Maltese Crosses, rich deep colour, a most attractive and rare multiple. Gi. AS74, unpriced as block.

AS74

田

400 (€ 420)

1841, 1d. black and red, plate 11, "matched pairs"



10190

Gibbons

Start price	<i>Start price</i>
in CHF	<i>approx. €</i>

- 10190** 1d. black and 1d. red-brown, plate 11, lettered QI, each cancelled with black Maltese Cross, 1d. black with mostly large margins, touching at right, 1d. red mostly close to good, small imperfections, but rare matched pair. Gi. AS72, AS74 = £4,730.

AS72+
AS74

450	(€ 475)
------------	---------



The Hill House in Streatham



10191

- 10191** 1d. greyish-black, plate 11, lettered JJ, good to large margins all around, tied to folded cancelled by black Maltese Cross, struck on front with two-line "Shaftsbury - Penny Post" and "No. 7" in black, to Streatham, Surrey, reverse with two 22 September 1841 datestamps in red, vertical filing fold, one through adhesive, offered with a matching 1d. red-brown plate 11, JJ single with four good to very large margins, a pleasing duo. Gi. AS72, AS74 = £16,130. Provenance: Phillips, 23 November 2000, lot 232.

AS73



500	(€ 525)
------------	---------

1840, 2d. Blue, plate 1



In the printing room of Perkins Bacon & Co.



10192

Gibbons

Start price
in CHF Start price
approx. €

- 10192** 2d. deep full blue, plate 1, block of four, lettered BI-CJ, mostly close to good margins, shaved at left, full original gum, radiant colour, a few light creases not visible from the front, a tremendously rare and most attractive block. Cert BPA (1965, copy of certificate for block of six from which this originates), . Gi. DS1 = £175,000.
Reference: Article: "Pick of the Pack - 1840, Twopence Plate 1 Mint Blocks", by Karl Louis, Great Britain Philatelic Society, GB Journal, November 2023.
Provenance: Harmer, 26-27 April 1937, lot 161
Harmer, 14 November 1950, lot 376
Robson Lowe, 12 October 1965, lot 103
61. Corinphila auction, 11 March 1980, lot 1915
R.J. Cooley Collection, Shreves, 23 September 1995, lot 277
Dr. Pichai Buranasombati Collection, Shreves, 15 March 2001, lot 202
The Bill Gross Collection, 11 June 2007, lot 42.

DS1 田** **30'000** (€ 31'500)



10193



10194



10195

Gibbons

Start price
in CHF Start price
approx. €

10193 2d. blue, plate 1, lettered OJ, good even margins, clean strike of Maltese Cross in red, fine. Gi. DS5 = £975.

DS5

180 (€ 190)

10194 2d. blue, plate 1, horizontal pair, lettered HG-HH, ample to large margins, lightly cancelled with Maltese Crosses in black, pleasing lighter shade, fine. Gi. DS5 = £2,200.

DS5

350 (€ 370)

10195 2d. blue, plate 1, horizontal pair, lettered LA-LB, four large even margins, cancelled with black Maltese Cross, fresh colour, attractive and very fine. Gi. DS5 = £2,200.

DS5

400 (€ 420)

10196



10197

10196 2d. pale blue, plate 1, horizontal pair, lettered TG-TH, good to large margins all around, centrally-struck Maltese Cross in black, corner crease at upper left, else a fine pair in a pleasing delicate shade. Gi. AS6 = £2,200.

DS6

200 (€ 210)

10197 1d. blue, horizontal strip of three, lettered HC-HE, four mostly good to large margins, touching at lower left, cancelled with multiple strikes of Maltese Cross in red, repaired at upper right, else a fine-appearing and scarce multiple. Gi. DS5ua = £3,750

DS5ua

400 (€ 420)

10198



10199

10198 2d. blue, plate 1, horizontal strip of three, lettered LJ-LL, large margins on three sides, close at foot, bright shade, cancelled with neatly-struck Maltese Crosses in red, light crease to LK, a most pleasing strip. Gi. DS5 = £3,175.

DS5

650 (€ 685)

10199 2d. blue, plate 1, horizontal strip of three, lettered PH to PJ, mostly good margins touching in places, cancelled with crisp Maltese Cross postmarks in red, PH showing left lower corner lines recut, delicate almost pastel-like shade, light crease to PI not mentioned on certificate but noted for strict accuracy, else a fine and appealing multiple. Cert RPSL (1989). Gi. DS5 = £3,195+

350 (€ 370)

10200

10200 2d. blue, plate 1, group of eleven used singles and two pairs, most with four good margins, cancelled with red (3) or black (8, plus both pairs) Maltese Crosses, range of shades from pale to darker blue, some small faults, but a most appealing group with many fine stamps, ideal for further study of this issue. Gi. DS5/6 = £15,125+

DS5/6

1'500 (€ 1'575)



10201

Gibbons

Start price
in CHF Start price
approx. €

- 10201** 2d. blue, plate 1, horizontal strip of four, lettered PB-PE, chiefly good margins, touched in places, cancelled with Maltese Crosses in black, light creases but of fine appearance. Gi. DS5 = £4,400+
Provenance: Robson Lowe, Bournemouth, 31 October, 1953, lot 375.
Robson Lowe, 23 September, 1986, lot 252.

DS5

450 (€ 475)

10202

- 10202** 2d. blue, plate 1, block of four, lettered FI-GJ, mostly good to large margins all round, close in places, deep shade, cancelled with neatly-struck Maltese Crosses in red, FI-FJ with crease, some repairs, but a fine-appearing block that presents beautifully. Cert RPSL (2001).
Gi. DS5 = £22,000.

Provenance: Stanley Gibbons auction, 7-9 July 1972, lot 605

H.F. Johnson Stock Collection, Stanley Gibbons, 27-28 May 1982, lot 159.

DS5

⊞

1'000 (€ 1'050)

10203

- 10203** 2d. (deep dull) blue (2) and 2d pale blue (2), all from plate 1, four margins all around, tied to small piece by black Maltese Crosses, OC showing the shifted transfer, PE with the constant variety, some small imperfections, a most striking quartet, signed Calves. Cert RPSL (2019). Gi. DS5, DS6 = £3,950.

Provenance: Corinthila, 11 March, 1980, lot 1951.

Collection H.O. Fraser, 7 November, 2001, lot 295.

DS5, DS6

△

650 (€ 685)



View of Wigtown



10204

Gibbons

Start price
in CHF Start price
approx. €

- 10204** 2d. blue, plate 1, horizontal pair, lettered CC-CD, tied to folded cover by black Maltese Crosses, endorsed "OHMS" and carried from Stranraer to Wigtown, reverse with boxed despatch strike (27 February, 1844) and next-day receiver, portion torn from back from removal of seal, a nice franking paying the 4d rate for one to two ounces and a very rare "O.H.M.S." Official use with only one other 2x 2d franked letter recorded in the Karl Louis Card Index. Gi. DSS.

DSS

**600** (€ 630)

10205

- 10205** 2d. blue, plate 1, horizontal strip of three, lettered RJ-RL, margins mostly clear to good, tied to folded entire by black Maltese Crosses, reverse with Settle double-arc despatch strike in blue (11 May, 1841), next-day receiver datestamp of the London Chief Office, filing folds, one through RL, a scarce franking. Gi. DSS.

DSS

**500** (€ 525)



A street scene of Edinburgh



Alan Holyoake



10206

Gibbons

Start price
in CHF Start price
approx. €

10206 2d. blue, plate 1, block of five, lettered RJ-RL, SK-SL, chiefly good to large margins, just touching at lower left of SK, tied to folded entire by red Maltese Crosses, paying the 10d for up to 5 ounce rate, from London, to Edinburgh, reverse with London despatch c.d.s. (16 June, 1840), with Edinburgh receiver (18 June), contents discussing legislation before Parliament, pressed crease through RJ-RL, cover with internal repair, exceptionally rare, believed to be the earliest recorded block of the 2d used on cover. Cert. BPA (2010). (Gi. DS5ua).

Provenance: H.R. Harmers, London, 6-8 July 1959, lot 282

Collection Dr. Pichai Buranasombati, Shreves Philatelic Galleries, 15 March, 2001, lot 224

Collection "Mayflower" Grand Prix Exhibit (Alan Holyoake, 2015)

Collection Forrester.

DS5ua **10'000** (€ 10'500)

1840, 2d. Blue, plate 2



10207

Gibbons

Start price
in CHF Start price
approx. €

- 10207** 2d. blue, plate 2, lettered NK-NL, unused, part original gum, margins touching at left, else large including sheet margin at right, with partial "Back be careful not..." inscription, deep colour, horizontal crease, repairs to NK, but a fine appearing and extremely rare unused marginal pair. Gi. DS8 = £100,000.

*Provenance: (as part of a larger block) Collection G. Mackay block (1898)
Puttick & Simpson auction, 29-30 October 1901
Stanley Gibbons auction, 21 May 1975, lot 301
R.J. Cooley Collection, Shreves, 29 September 1995, lot 289.*

DS8

*

1'000 (€ 1'050)

10208

- 10208** 2d. blue, plate 2, lettered OJ, four good to large margins, cancelled with Maltese Cross in both black and red, some light staining, thinned, yet a rare cancellation combination. Gi. DS8ug = unpriced.

DS8ug

120 (€ 125)

10209

- 10209** 2d. blue, plate 2, three horizontal pairs, lettered CK-CL, DK-DL, and EK-EL, all with four mostly good margins, all cancelled with Maltese Crosses in black, two of the pairs very lightly so, EK-EL with lovely bold strikes, some small imperfections, EK-EL pair with vertical crease, a fine appearing group of multiples with a pleasing range of shades and charming link in plate positions. Cert Philatelic Expertising (Great Britain) for EK-KL (1996). Gi. DS8, DS9 = £7,500

DS8, DS9

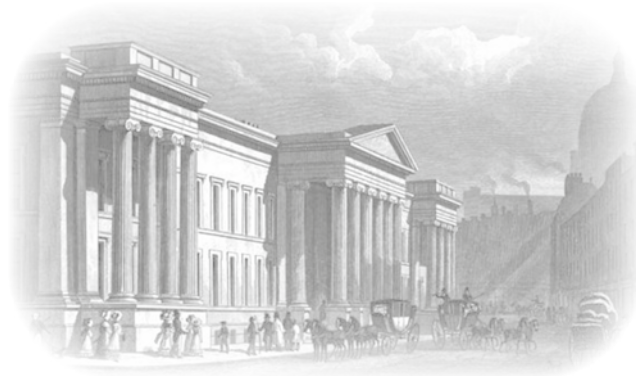
800 (€ 840)

10210

- 10210** 2d. blue, plate 2, horizontal strip of four, lettered PH-PK, good to large margins, cancelled with Maltese Crosses in black, light crease to PH, else a fine and scarce multiple. Gi. DS8 = £5,000+

DS8

600 (€ 630)



London's General Post Office



10211

Gibbons

Start price in CHF Start price approx. €

- 10211** 2d. blue, plate 2, horizontal strip of nine, lettered MA-MI, margins touching in places but chiefly ample to very good, cancelled with multiple crisp strikes of Maltese Cross in black, deep fresh colour, small tear to MG and pinhole in MA, trace of trivial pressed creases, not detracting from this significant and striking multiple. Cert BPA (2012). Gi. DS8.
 Provenance: Collection "Daisy", Christies, 8 October 1996, lot 452
 Collection Dr. Pichai Buranasombati, Shreves Philatelic Galleries, 15 March, 2001, lot 243

DS8

3'000 (€ 3'150)



10212

- 10212** 2d. blue, plate 2, block of ten, lettered IG-JK, chiefly good margins, touched at places, neatly-cancelled with black Maltese Crosses, fresh colour, trivial thin to IK and pressed creases not detracting from the beautiful appearance of this rare showpiece. Cert BPA (1996). Gi. DS8 = £46,500+
 Provenance: Sugden Collection, Harmers, 8-9 January 1951, lot 248
 Collection "Daisy", Christies, 8 October 1996, lot 455
 Dr. Pichai Buranasombati Collection, Shreves, 15 March 2001, lot 244.

DS8

田

7'500 (€ 7'875)

Local Maltese Crosses



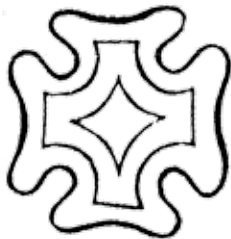
10213



10214

- 10213** 1d. red-brown, plate 11, lettered IA, four large to very large margins, showing trace of sheet margin inscription at left, tied to piece by choice strike of the Greenock Maltese Cross in black, confirming boxed Greenock datestamp above (22 December, 1841), light vertical crease at right through piece and adhesive, not detracting from this exceptionally attractive example. Gi. AS74uc = £600.
- 10214** 1d. red-brown, plate 10, lettered HL, ample to large margins all around, cancelled with partial strike of distinctive Manchester "Fishtail" Maltese Cross in black, small pinhole, else fine. Gi. AS68uf = £700.

Gibbons		Start price in CHF	Start price approx. €
AS74uc	△	150	(€ 160)
AS68uf		120	(€ 125)



10215



10216



- 10215** 2d. blue, plate 1, lettered RJ, good to large margins on three sides, touched at left, deep shade, cancelled with very fine large part strike of the distinctive Whitehaven Maltese Cross in black, the sole example on this issue recorded by Rockoff and Jackson, and in the Karl Louis Card Index, extremely rare and ideal for exhibition. Cert RPSL (2008). Gi. DS5.
*Provenance: Stanley Gibbons auction, 7-8 November 1974, lot 674
Robson Lowe, 27-28 February 1979, lot 506.*
- 10216** 2d. blue, plate 1, lettered DD, three very large margins, clear at right, cancelled with distinctive Maltese Cross of Wotton-under-Edge in black, a fresh and superb example of this rare postmark, one of only six singles recorded in the Karl Louis Card Index. Cert RPSL (2011). Gi. DS5vq = £15,000.

DS5		1'500	(€ 1'575)
DS5vp		1'500	(€ 1'575)

Coloured Maltese Crosses



10217



10218



10220



10221

Gibbons

Start price in CHF Start price approx. €

10217 1d. black, plate 4, lettered QG, four good to large margins, cancelled with both red and black Maltese Cross, a fine example of this scarce combination with both colours clearly visible. Cert. RPSL (1984). Gi. AS23vk = £1,500.

AS23vk

300 (€ 315)

10218 1d. black, plate 2, lettered SI, margins touching to good, cancelled with bold Maltese Cross in the characteristically fugitive fluid violet ink, thinned at upper left, yet a striking example of this rare cancellation. Gi. AS14vf = £14,000

AS14

400 (€ 420)



10219

10219 2d. blue, plate 1, lettered DB, good to large margins all around, tied to folded cover by Maltese Cross of Haddington in brown, Haddington despatch cancellation in matching ink (31 October, 1840), to Edinburgh, with same-day c.d.s. on reverse, a remarkably fresh example of this rare coloured cancellation, thought to be the only existing example on cover with this combination. Cert BPA (1994). Gi. AS5uh = £25,000.

DS5



3'000 (€ 3'150)

10220 1d. red-brown, plate 5, lettered SJ, ample to large margins all around, cancelled with neatly-struck Maltese Cross in red, scarce as such, rich colour, a lovely example, fine. Cert RPSL (1990). Gi. AS29va = £3,750.

AS29va

400 (€ 420)

10221 1d. red-brown, plate 5, State 2, lettered GA, margins clear to very large, cancelled with Maltese Cross in red, repaired tear at foot, negligible thin at top right, but a rare and attractive example of this coloured cancellation. Cert. PTS Expertising Ltd. (2929). Gi. AS32va = £3,750.

AS32va

300 (€ 315)

Penny Post and other Receiving Houses



10222

Gibbons

Start price
in CHF Start price
approx. €

- 10222** 1d. black, plate 4, two singles, lettered AB and AH, good to large margins, each tied to folded cover by red Maltese Cross, black "Middleton Rd / Penny Post" alongside, to Stockton on Tees, with Darlington double-arc c.d.s. on reverse (23 August, 1840), light filing fold crossing AH, else a fine example of this 2d rate for up to one ounce.

AS23

**350**

(€ 370)



10223



10224

- 10223** 1d. grey-black, plate 1a, lettered NC, good to large margins, tied to small piece by neatly-struck Maltese Cross in red, adjacent boxed "Peter - / borough / Penny Post", a fine and delightful stamp. Gi. AS2.

Provenance: Collection Chartwell.

AS2

**180**

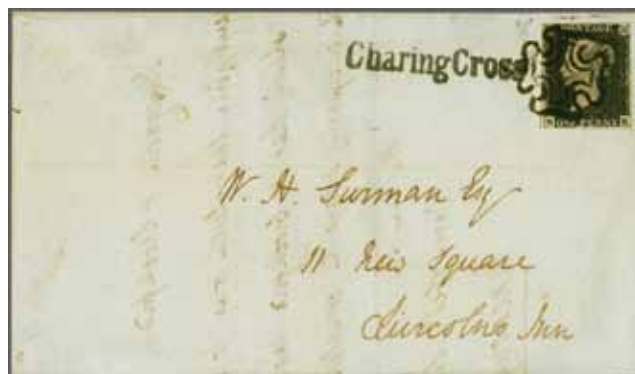
(€ 190)

- 10224** 1d. red-brown, plate 10, lettered FK, mostly good margins, touching at upper right, cancelled with both black Maltese Cross and partial "Penny Post" in red, rich colour, a fine and scarce combination of postmarks. Gi. AS68ye = £800.

AS68ye

140

(€ 145)



10225



A street scene of Charing Cross

- 10225** 1d. black, plate 6, lettered NK, chiefly good to large margins all around, clear at lower left, tied to folded entire by superbly-struck Maltese Cross in black, equally crisp "Charing Cross" straight-line adjacent, sent within London to Lincoln's Inn, with red arrival backstamp (12 November, 1840) confirming use within the experimental period in London where blank ink was being used for Maltese Cross cancellations, light horizontal filing fold, a tremendously fresh and attractive entire. Gi. AS41.

AS41

**300**

(€ 315)

London Maltese Crosses with Numbers



10226

- 10226** 1d. red-brown, plate 9, lettered SD, four large margins all around, showing signs of plate wear, cancelled with ideal strike of "2" Maltese Cross, very fine. Gi. AS59wb = £700.

Gibbons

Start price
in CHF Start price
approx. €

AS59wb

150 (€ 160)



10227



10229

- 10227** 1d. red-brown, plate 9, lettered PC, tied to folded entire by neatly-struck "2" Maltese Cross of London, to Wymondh, internally dated 2 June, with next-day double-arc receiver strike on reverse, vertical fold clear of adhesive and light wrinkles, an attractive example of this scarce strike. Gi. AS59wb = £1,600.

AS59wb

✉

250 (€ 265)



10228

- 10228** 1d. red-brown, plate 9, lettered KF, four large even margins, tied to small piece by clear strike of "5" Maltese Cross in black, most attractive. Gi. AS59we = £700.

AS59we

△

150 (€ 160)

- 10229** 1d. red-brown, plate 9, lettered PG, ample to very large margins, showing portion of two adjoining stamps, affixed to folded entire and cancelled with clear strike of "7" Maltese Cross of London, with morning duty datestamp (25 May, 1843) on reverse and next-day Petersfield receiver on front, some wrinkles, an ideal strike of this desirable cancellation and extremely rare on a "black plate". Cert. RPSL (2023). Gi. AS59wg = £1,600.

AS59wg

✉

350 (€ 370)

1844, Numeral Cancellations



10230



10231

- 10230** 1d. grey-black, plate 1a, lettered GA, three large margins, slightly torn into design at right, tied to small piece by Liverpool experimental machine obliterator (4 DE 58) of the type introduced by G.H. Creswell, a rare late usage, eighteen years after the stamp's introduction.

Gi. AS2 = £375

Note: In 1862, Creswell was awarded the sum of £400, and the rights to his patented invention were surrendered to the Post Office.

- 10231** 2d. pale blue, plate 1, lettered PK, four good even margins, neatly-canceled with large part Scottish town handstamp, scarce and fine. Gi. DS6xc = £2,000.

Gibbons

Start price
in CHFStart price
approx. €

AS2

△

100

(€ 105)

DS6xc

250

(€ 265)

Tax and various other Instructional Markings



10232



A view of Falkland Palace and Town

- 10232** 1d. black, plate 2, lettered HJ, four large even margins, affixed to folded cover and cancelled by red Maltese Cross, posted from London (7 June, 1840), to Falkland, Fifeshire, received and re-addressed to Edinburgh, struck with FALKLAND straight-line in red, 1d forwarding fee prepaid, indicated by boxed "1" handstamp, formerly used as a receiving house marking, boxed Kettle (June 9) datestamp on front, a scarce usage, with the use of this handstamp as a prepayment mark recorded on only three days. Cert. RPSL (2023). Gi. AS14.

AS14

✉

500

(€ 525)



10233

Gibbons

Start price
in CHFStart price
approx. €

- 10233** 1d. black, plate 9, lettered RI, three large margins, close at right, tied to piece with black Maltese Cross, additional strike alongside, typically associated with Spilsby, double-circle "More to Pay" and manuscript "2" beside, fine. Gi. AS57 = £750+

AS57

△

150

(€ 160)

Later Essays and Reprints



10234



10235

- 10234** 1850, 1d. Prince Consort Essay, by Henry Archer, the finished design in red-brown, four large margins, two light creases and small natural inclusion, a scarce essay. Gi. DP71(2) = £2,000.
- 10235** 1850, 1d. Prince Consort Essay, by Henry Archer, the finished design in black, imperforate, four good to large margins, paper slightly toned, else a fine example of this desirable essay. Gi. DP71(2) = £3,000.

DP71(2)

(*)

500

(€ 525)

DP71(2)

(*)

800

(€ 840)



10236



10237



10238

- 10236** 1867, 1d. black, Paris Exhibition Proof, on soft white card, horizontal pair, lettered MG-MH, three good to large margins, shaved at left, small imperfections and slight staining as often seen, a scarce multiple of this proof. Gi. DP38(a) = £4,500.
On occasion of this Exhibition, proof sheets in black and rose were printed from Plate 103, one sheet for each colour; and blocks of twenty were displayed. The formerly adjoining pair MI-MJ is in the collection of His Majesty King Charles III.
- 10237** 1867, 2d. black, Paris Exhibition Proof, on soft white card, lettered JC, good even margins, small thin, otherwise fine. Gi. DP49 = £3,000
- 10238** 1872, 1d. black, South Kensington Exhibition Proof lettered ND, imperforate, on thick white card, four even margins all around, uniform toning, but quite attractive and scarce. Gi. DP36 = £2,000.
Note: On occasion of this exhibition, Perkins, Bacon printed proofs from Die II, Plate 27, in black. This sheet was afterwards retained by the printers, and sold upon the firm's dissolution in 1935.

DP38a

(*)

500

(€ 525)

DP49

(*)

400

(€ 420)

DP36

(*)

350

(€ 370)

Mulready Envelopes & Letter Sheets used in 1886 by J. W. Palmer



10239



10240

Gibbons

Start price
in CHF Start price
approx. €

10239 1840, Mulready, 2d. blue envelope, stereo a208, a late usage to J.W. Palmer at 281 Strand, struck with London squared circle (11 March, 1886), originally not accepted and struck with "2" charge mark, crossed-out and endorsed in manuscript "Charged in error. The stamp envelope being genuine. F.H. Postmaster W.C. District", reverse with two London W.C. c.d.s. (11 March), quite fresh, a rare and charming usage.

Two letter sheets with similar usages, one 1d. back and one 2d. blue, reside in the R.M. Phillips Collection of the Postal Museum. (Vol. II, Page 29). The addressee, Joseph W. Palmer, was a London stamp dealer, (see lot 10241, middle painting) famed for his "Chamber of Philatelic Horrors", the walls of an entire room being papered with forgeries.

✉ **600** (€ 630)

10240 1840, Mulready, 1d. black letter sheet, stereo A26, a late usage to J.W. Palmer at 281 Strand, struck with London squared circle (11 March, 1886), originally not accepted and struck with "2" charge mark, crossed-out and endorsed in manuscript "Charged in error. The stamp envelope being genuine. F.H. Postmaster W.C. District", reverse with two London W.C. c.d.s. (11 March), the odd toning spot, a rare and most appealing usage.

Two comparable letter sheets, one 1d. back and one 2d. blue, reside in the R.M. Phillips Collection of the Postal Museum. (Vol. II, Page 29). The addressee, Joseph W. Palmer, was a London stamp dealer, (see lot 10241, middle painting) famed for his "Chamber of Philatelic Horrors", the walls of an entire room being papered with forgeries.

✉ **500** (€ 525)



10241

The Shop front at 281 Strand, shown in the middle painting, is the addressee of the Mulready covers available in lots 10239 and 10240.

10241 Alfred Bennett Bamford was a prolific watercolour painter, most known for his pictures of Essex. Three watercolours in grey, depicting the shop fronts that were once home to London stamp dealers, depicting No. 38 Hollywell Street (S. White), No. 281 Strand (Jim Palmer)

100 (€ 105)

For additional lots Great Britain please see our catalogue 313

British Stamp Perforation

The Ray Simpson Collection

30 313 Corinphila Auction



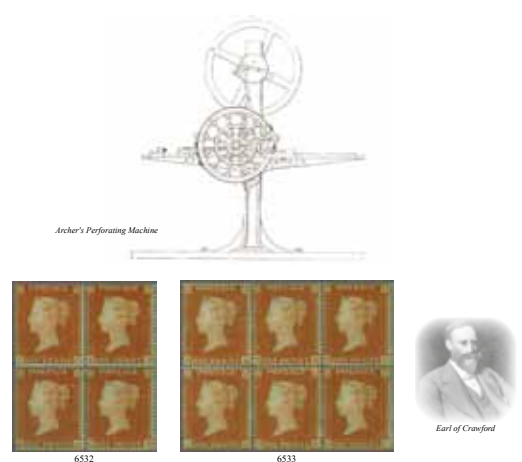
6523

House of Commons

6523 1851, "PERFORATED POSTAGE LABEL STAMPS" Archer Pamphlet, announcing the availability of the stamps at the House of Commons during the 1851 Parliamentary Session, extolling the advantages of the invention with "Perforated labels may now be had at the House of Commons"; this particular pamphlet was sent as a letter, franked with an Archer 16 plate 94, purchased at the House of Commons by Henry Gratian, MP for Meath, sent from London to Dublin, dated 23 March 1851; some tears, creasing and imperfections as might be expected, although a very important piece and rare. Cert. BPA (1996).
 Reference: "Distribution and Usage of Archer-Perforated Stamps - Updated" by R.C. Simpson, *GB Journal*, Volume 60, Number 1, January/February 2022, illustrated on page 5.

168 1'500 (#1757)

313 Corinphila Auction 35



Archer's Perforating Machine

6532 6533

Earl of Cranford

6532 1850, 1 d. red, plate 96, lettered JC-KD, Archer Perf. 16, unused block of four, nicely positioned, with small part original gum, extremely fresh colour, vibrant printing, excellent perforations all round which match those from the Hill/Addenbrooke Punch Set; distinct from the Wilkenson set as they are more precisely aligned; superb appearance and rare block. Cert. BPA (1996). 30100 - 31900.
 Reference: "The Postage Stamps of Great Britain Part Two" by Dr. W.R.D. Wiggins, illustrated on Plate 3.
 Provenance: Earl of Cranford (1912) - originally incorporated in a part sheet.

6533 1850, 1 d. red, plate 96, lettered NA-OC, Archer Perf. 16, unused block of six, strong colour, crisp bright printing, part original gum, perf. separation in places reinforced by four black hinge strips and one mount, OC has small paper flaw and ink spot, however very attractive, eye catching multiple, an important and rare block from the Hill/Addenbrooke Punch Set in the third state of use. Cert. BPA (1954). 30100 - 31900 as a block of four across margin.
 Reference: "Stamp Perforation: The Somerset House Years 1848 to 1880", by R. Simpson & P. Sargent, illustrated on Plate 1.
 Provenance: Earl of Cranford (1912) incorporated into a part sheet, Robson Lowe, 28 September 1939, lot 106
 P.C. Litchfield Collection, Robson Lowe, 19 April 1950, lot 290
 John Lewis Collection, Robson Lowe, 14 April 1954, lot 323
 Fisher Collection, Phillips, 23 March 1983, lot 288
 Christie's, 3 June 1994, lot 3226
 David Feldman, 14-20 February 1999, lot 31181.

168 2'000 (#2100)

168 (*) 3'000 (#3150)

313 Corinphila Auction 53



6584

The Grand Pagoda of Rangoon

6584 1841, 2 d. blue, plate 4, lettered LL, imperf., three margins, used on cover in combination with 1854 1 d. red, plate 167, lettered OE, perf 16 and embossed 1847, 1 s. green, vertical pair, sent from Stalybridge to Rangoon (Burma), dated 23 March 1854, tied by "502" English numeral, endorsed via Marseille, a 2 s. 3d rate; arrival date stamp to reverse dated (?) May 1854, with transit in Calcutta which looks to be 16 May, horizontal filing crease clear of stamps, toned wrapper, the embossed are close to touching and one has a tear into left side, very scarce, the earliest recorded with such a combination, one of only ten covers with imperf. perf. stamps, attractive tri-colour mixed-franking to an unusual destination.
 Reference: "Mixed-Frinking Covers" by R.C. Simpson & K. Louis, MJ Publications, 2020, illustrated page 69 and recorded page 76.

14, 17, 55 800 (#840)



View of Bombay

6585

6585 1841, 2 d. blue, plate 4, lettered JH, imperf., four margins, used on cover in combination with 1857, 1 d. red, perf 14 and 1856, 6 d. lilac, plate 1, sent from London to Bombay (India), dated 3 April 1860, tied by London 80P duplex cancel, sent via Marseille, arrival date stamp to reverse dated 26 April, stained and toned around edges, a rare tri-colour mixed-franking, one of three covers from the original find about 25 years ago with this specific combination, all dated 1860 from the same sender.
 Reference: "Mixed-Frinking Covers" by R.C. Simpson & K. Louis, MJ Publications, 2020, illustrated page 70 and recorded page 78.

14, 40, 70 1'500 (#1757)

313 Corinphila Auction 67



6624 6625

6624 1862, 4d pale red, plate 3, lettered CG, 'SPECIMEN' variety "abnormal official perforations", portion of wing margin still attached at left, mounted to a small piece with 1861, 3 d. rose, plate 2, state 1, shaded spandrels, lettered HH, 'SPECIMEN' and 1862, 9 d. bistre, plate 2, lettered HH, 'SPECIMEN'; both Wing margins, some soiling, dulled perfs. top of 4d and very lower tip of 9d clipped, very attractive and scarce trio. 301 Spc. 303, 253A and 303, 01-1923.
 Provenance: Marcus Samuel Collection, Spink, 3 December 2002, lot 1097.

6625 1867, 3 d. rose, plate 8, lettered QE-RH, wmk. spray, perf 14, used block of eight, from the middle pane showing Wing margin on both sides, cancelled with Irish numeral "174" of Dingle, fine and very scarce example illustrating the printing perforation lay-out and used in Ireland. The largest recorded used block from plate 8 in the Karl Louis Card Index. 301 103 - 6507 as one block of four.

80, 75, 86 500 (#325)

102 200 (#210)



6626

6626 1867, 3 d. rose, plate 7, lettered EI-FJ, wmk. spray, perf. 14, used "Gutter block of four", confirming "two-pane" format of Post Office sheets, a spectacular exhibition item, being the only "Gutter" multiple of the 1855/80 Surface Printed issues recorded in the Karl Louis Card Index in used condition, an important piece.

6627 1867, Selection of marginal with inscription 1 s. green, used stamps, comprising five examples from plate 6 and one example from plate 4, five with cds cancels, all showing various parts of the top or bottom margin, an attractive lot. (Photo = [www])

102 1'000 (#1100)

104, 106 150 (#140)