

NEW SOUTH WALES

including the "Mint" Collection of
Peter Campbell

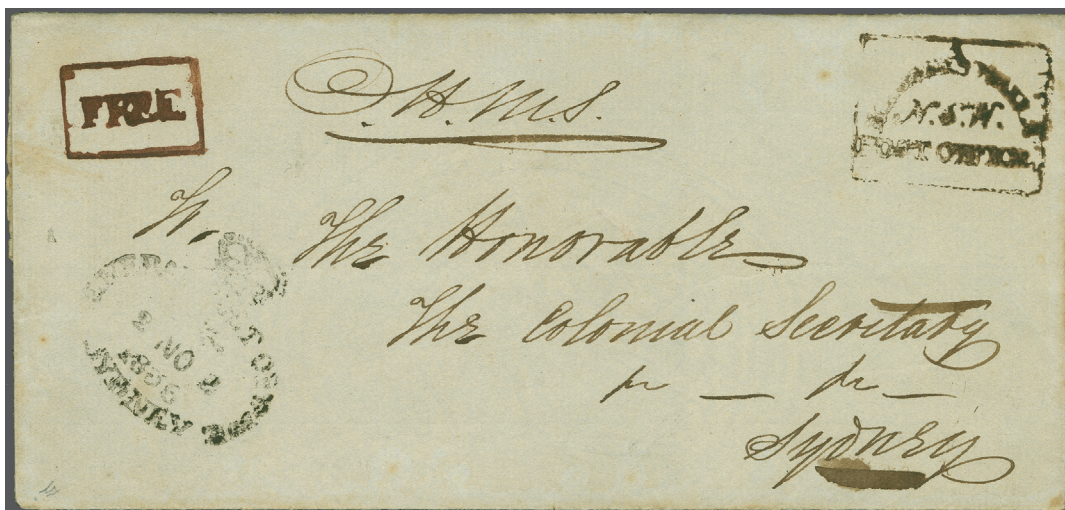


View of Sydney

Stampless Mail



Alexander McLeay
(1767-1848)



3201

Gibbons

Start price
in CHF

- 3201** 1836 (Nov): Official cover to the Colonial Secretary (Alexander McLeay) in Sydney headed "OHMS" at top, struck with framed "FREE" and framed "HASSANS WALLS / N.S.W. / POST OFFICE" despatch handstamps in brown, with "☪ / GENERAL POST OFFICE / SYDNEY" arrival in black at left (Nov 2). The lot is accompanied by photographs of the gravestone of Michael Keenan, the Postmaster at Hassan Walls (although a Mr. Dalway was Postmaster when this cover was sent, Keenan being the previous incumbent) and a brief history of this elusive office. An extremely rare and historic cover - **the sole example of the Hassan Walls handstamp in private hands.**

Provenance: Collection Slade Slade, Harmers, London, 3-4 April 1979, lot33.



5'000



3202



View of Bathurst

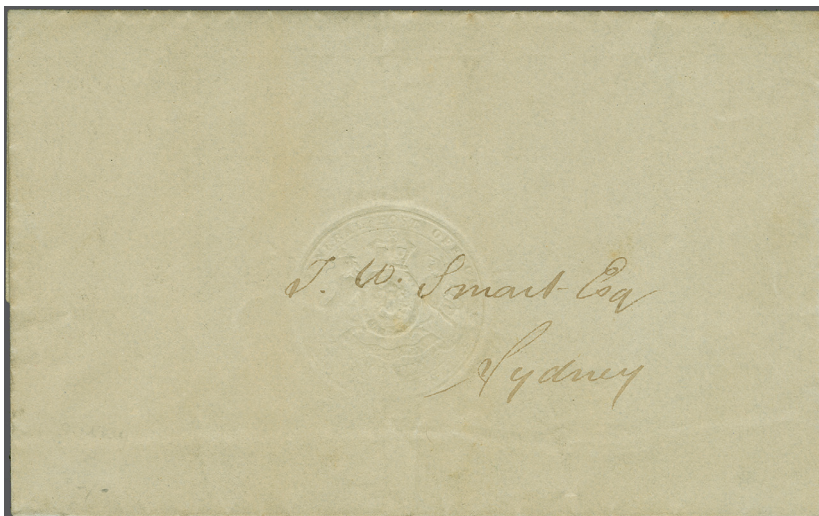
Gibbons

Start price
in CHF

- 3202** 1838c.: Entire letter locally mailed to a Mrs. Ranken at Saltham Lodge, rated "1d." in manuscript alongside superb strike of "BATHURST / N.S.W." handstamp in black. The letter was written by Emily Morisset (1803-1892), wife of Lieut.-Colonel James Morisset (1780-1852), the Police Magistrate in Bathurst at this date, prior to this he was Commandant of the penal settlement on Norfolk Island.

**500**

1838/52: GPO-Embossed Lettersheets



3203

The General Post Office
in Sydney

- 3203** 1848: Folded lettersheet, approximately 247 x 199 mm., white wove paper with double-lined watermark "J. WHATMAN / TURKEY MILL / 1848", centrally embossed before folding with "GENERAL POST OFFICE / (Royal Arms) / SYDNEY / NEW SOUTH WALES", addressed to "J.W. Smart, Esq. / Sydney", without message or postal markings, a rare pre-stamped stationery precursor, *believed to be the unique example on this paper*, light filing folds and barest trace of edge toning, very fine and rare. Cert Ceremuga (2019).
Note: The embossing pre-paid local postage only; whilst stocks of letter-sheets were available at the Sydney General Post Office, potential customers could bring their own stationery to the Post Office for embossing.

**500**

1850 (Jan.): One Penny, Sydney View, Plate I, No Clouds



3204

- 3204** 1 d. carmine-lake on soft yellowish wove paper, plate 1, position 23, unused, without gum, four mostly good to large margins, an early impression with pleasing deep colour, a couple small thins, not detracting from this otherwise exceptional stamp, with even many of the renowned New South Wales collections of the past missing an unused example; a classic rarity. Cert Ceremuga (2012).
Gi = £ 20'000.

Gibbons

Start price
in CHF1 (*) **5'000**

3205

- 3205** 1 d. carmine on soft yellowish paper, plate 1, without clouds, unused, without gum, four large balanced margins, rich deep shade, thin at upper left, else a remarkable unused example, a rarity of exceptional appearance. Cert. B.P.A. (1996) Gi = £ 20'000.

2 (*) **5'000**

3206

- 3206** 1 d. reddish-rose on soft yellowish wove paper, plate 1, without clouds, from position 8, unused with part original gum, particularly difficult as such, four good to large margins all around, delicate light shade, vertical crease, else a fine example of this rare unused stamp. Cert Ceremuga (2013) Gi = £ 18'000.

3 * **3'000**



Charles Lathrop Pack



Alfred H. Caspary



Dr. Chan Chin Cheung



Lars T. Amundsen



Rod Perry



3207

Gibbons

Start price
in CHF

3207 1 d. reddish-rose, Plate I (positions 21-22) in a horizontal pair with huge margins all round the right hand stamp with insignificant surface scuff at top, used with single **3 d. myrtle-green** on soft yellowish paper (position 14), large margins all round and slightly overlapping the pair, on the famous 1850 cover from Gresford to Hobart, Van Diemen's Land all tied by bold strikes of "61" barred obliterators in black. Obverse with oval "PAID SHIP LETTER / 🏰 / SYDNEY" in red (May 8) and manuscript "4d." due for incoming Ship fee; reverse "GRESFORD / 🏰 / NEW S. WALES" despatch datestamp (May 6) and Crowned "PATTERSON" transit together with framed "SHIP LETTER" Hobart arrival (June 8) in black. Palmer cover census #108. Just three covers are recorded with the rare 3 d. myrtle-green. A magnificent and extremely attractive cover for the connoisseur (see the extraordinary provenances below) of the Sydney Views. Cert. P. Holcombe (1999).

Provenance: Collection Charles Lathrop Pack, Harmers, New York, 6-8 and 13-15 Dec 1944, lot 982
Harmers, London, 6-9 Oct 1958, lot 14

Collection Alfred H. Caspary, Harmers, New York, 6-9 Oct 1958, lot 14

Collection Dr. Chan Chin Cheung, Harmers, London, 29 May 1961, lot 116

Collection Lars Amundsen, SG, London, 6-8 Dec 1967, lot 321

SG First Hong Kong sale, 28-29 Sept 1976, lot 3

Collection "España", Harmers, London, 23 March 1984, lot 2023

Rod Perry, Melbourne, 6 Feb 1998, lot 671

Rod Perry, Melbourne, 18 March 1999, lot 559

Collection "Besançon", Corinthila sale 223, 31 May 2018, lot 3050.

3+ 40

**20'000**



Philipp von Ferrary



3208



3209

3208 1 d. pale red on hard bluish wove paper, plate 1, position 13, unused, without gum, four large balanced margins, a worn impression in a strikingly fresh and delicate shade, a beautiful example of this rare stamp, ideal for the connoisseur. Cert Ceremuga (2010) Gi = £ 16'000.

Provenance: Ferrari de La Renotière, 3rd Auction, 13 October, 1921, lot 6.

3209 1 d. pale carmine on hard bluish wove paper, plate 1, position 20, slightly worn impression, unused with disturbed original gum, lower left sheet corner single with four large margins, fresh colour, being an intermediate sheet between pale red and dull lake, a lovely and rare stamp. Cert Ceremuga (2018) Gi = £ 18'000.

Gibbons		Start price in CHF
5	(*)	5'000
6	*	4'500

1850 (Aug.): One Penny, Sydney View Plate I, Re-Engraved by Henry C. Jervis (Commonly Termed Plate II) With Clouds



View of Sydney Cove



3210

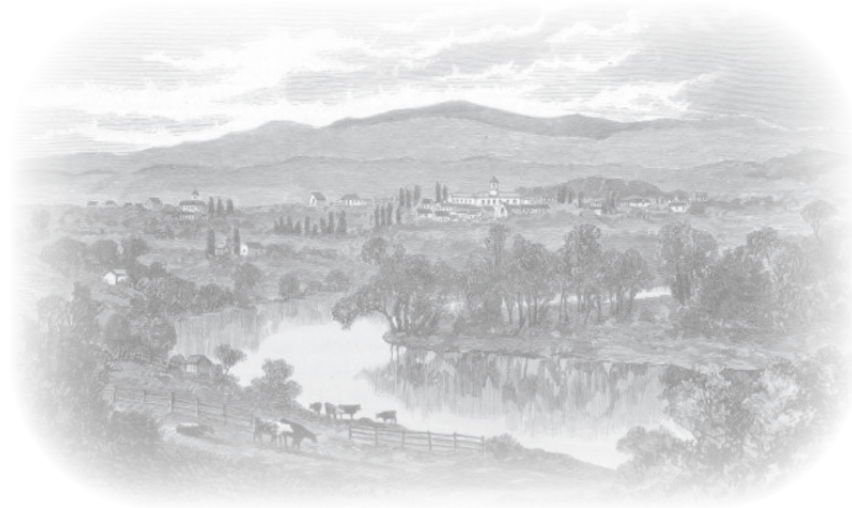


3211

3210 1 d. vermilion on hard off-white wove paper, plate II, re-engraved with clouds by Henry Jervis, unused, without gum, four mostly large margins, close but clear at left, deep colour and attractive early impression, fine and rare. Cert. Ceremuga (2010) Gi = £ 14'000.

3211 1 d. dull carmine on hard toned off-white paper, plate 1, position 9, re-engraved, unused, without gum, four large margins, blurred impression, the odd surface mark and slight staining at right side, scarce. Cert BPA (2015) Gi = £ 16'000.

7	*	3'500
8	(*)	3'000



A view of Albury



3212

Gibbons

Start price
in CHF

3212 1 d. crimson-lake on hard greyish mdium paper, Plate II (positions 11-12-13-14), the used horizontal strip of four with huge even margins all round, used on 1851 double rate entire letter to Albury, all crisply cancelled by "48" barred oval obliterations of Tarcutta in black. Reverse with oval "TARCUTTA / 🇺🇦 / NEW S. WALES" despatch in black (Sept 29) and faint Albury arrival of the following day. File folds well away from the adhesives, a splendid and beautiful entire with just two covers recorded with a strip of four of the Sydney View Plate II 1 d., this being without doubt the finest. A gorgeous cover for the connoisseur.

Reference: Melbourne International Exhibition catalogue (1963), page 44

Philately from Australia, Volume 15, March 1963, page 26

Provenance: Collection of Dr. W.P. Heslop

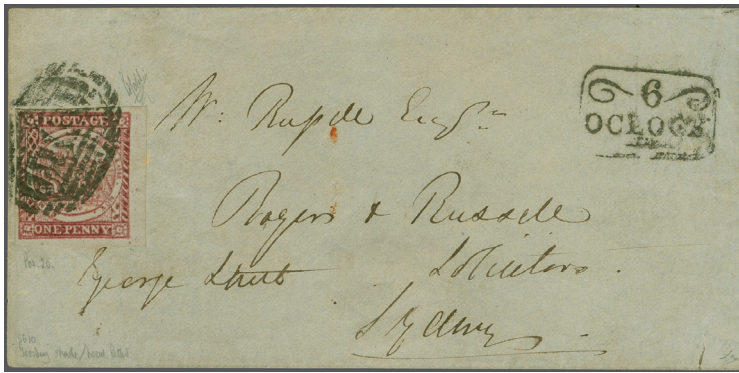
Collection Dr. W.R.D. Wiggins, Robson Lowe, 26 Nov 1981, lot 1731

Collection "Carrington", Millennium, Sydney, 7 Nov 2012, lot 56.

9



15'000



3213



View of George St. in Sydney

Gibbons

Start price
in CHF

- 3213** 1 d. gooseberry red on hard greyish paper, Plate II, position 20, a used example with good to huge margins all round in this scarce shade, tied to local Sydney Drop Letter to George Street by barred obliterator in black. Fine strike of framed "6 / O'CLOCK" handstamp at right in black, the reverse with circular "SYDNEY / 🇺🇦 / NEW SOUTH WALES" datestamp (Jan 17) in black. Not recorded in the Palmer cover census. An extremely rare usage of the gooseberry shade on a local letter. Cert. Holcombe (1992).

10 ✉

2'500

3214

- 3214** 1 d. dull carmine, on hard greyish wove paper, plate II, position 22, unused, without gum, four large even margins, intermediate impression, fresh colour, rare, a lovely stamp in all respects. Cert Ceremuga (2013) Gi = £ 17'000.

11 (*)

4'500

3215

- 3215** 1850: 1 d. dull carmine, Plate II (positions 6/11) on horizontally laid paper, a vertical pair with just clear to huge margins, showing portions of two adjoining stamps at right, used on 1851 cover to Yass lightly tied by obliterator in black. Reverse with circular "SYDNEY 🇺🇦 / NEW SOUTH WALES" despatch datestamp (March 1) and oval "YASS / 🇺🇦 / NEW S. WALES" arrival (March 4) in black. Side flaps missing and slight bend in margin between stamps but an attractive and scarce multiple. Palmer cover #83. Signed Miro.

Provenance: Collection Alfred Clayton, Harmers, London, Dec 7-8 and 14-15 1959, lot 619

Harmers, London, 29 Aug 1996, lot 898

Christie's, London, 13 Dec 1994, lot 735

Spink, London, 23-24 May 2002, lot 527

Millennium, Sydney, 12 Feb 2003, lot 503

Schuyler Rumsey, 2-4 Dec 2005, lot 2099

Spink, London, 9-11 Nov 2011, lot 1792

Abacus, Melbourne, 30-31 Aug 2020, lot 1377.

13 ✉

2'500

1850 (Jan.): Two Pence, Sydney View, Plate I, Vertical-Lined Background



3216

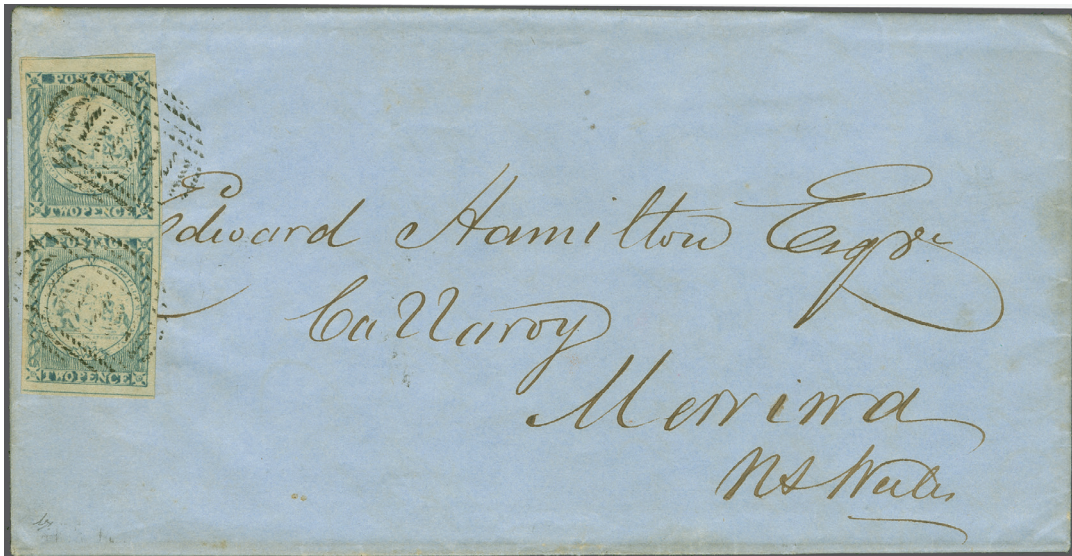


3217



3218

- | | | Gibbons | Start price
in CHF |
|------|---|---------|-----------------------|
| 3216 | 2 d. greyish blue, on soft yellowish wove paper, plate I, position 14, unused without gum, a crisp early impression, large to very large margins all around, detailed impression and fresh colour, skilfully repaired at upper left with small part of colour reinforced, a rare unused example of exceptionally attractive appearance. Cert Ceremuga (2012) Gi = £ 21'000. | 15 (*) | 4'000 |
| 3217 | 2 d. greyish-blue, on soft, yellowish wove paper, plate I, position 16, unused, without gum, four margins, large on three sides, close but clear at top, early to intermediate impression of impressive deep colour, fine and scarce. Cert Ceremuga (2009) Gi = £ 13'000. | 16b (*) | 3'000 |
| 3218 | 2 d. dull blue, on soft yellowish wove paper, plate I, position 11, unused, without gum, select centering without four very large margins, dramatic late worn impression, a visually-striking example of this scarce stamp. Cert. Ceremuga (2009) Gi = £ 11'000. | 18 (*) | 2'500 |



3219

- 3219 2 d. greyish-blue, a vertical pair with large margins all round (Plate I, positions 3/15, pos. 15 with central circles retouched) with near full framelines on three sides, used on 1850 double rate entire letter from Sydney to Merriwa tied by crisp strikes of the Sydney obliterator in black. Reverse with "SYDNEY / 🇺🇦 / NEW SOUTH WALES" despatch datestamp in black. An early usage of the retouched Plate, the retouching believed to have commenced from the end of January. Palmer cover census #41. A splendid and rare franking in extremely fine quality.

Provenance: Harmers, London, 14-15 Jan 1935, lot 347

Harmers, London, 7-8 Nov 1938, lot 352

Collection Geo. B. Boucher, RL, London, 19 April 1972, lot 641

Balasse, Brussels, 26-28 June 1972, lot 728

Collection "España", Harmers, London, 23 March 1984, lot 2124

Collection "V.P. Manwood", Siegel, New York, 8 Nov 1995, lot 4124

DF, Geneva, May 2002, lot 10613

"Carrington", Millenium, Sydney, 7 Nov 2012, lot 141.

17+ 19



3'000

**1850/51: Two Pence, Sydney View, Plate Entirely Re-engraved by Henry C. Jervis
(Plate II - Horizontal-Lined Background)**



3220

Gibbons

Start price
in CHF

- 3220** 2 d. indigo blue, Plate II (position 21), a fine example of excellent rich colour with large margins on three sides with ample margin at base although roughly separated, used on 1850 entire letter to West Maitland endorsed "Immediate", tied by barred "67" obliterator of Muswellbrook in black. Small imperfection to letter sheet, no side flaps at base; reverse with showing oval "MUSWELLBROOK / NEW S. WALES" despatch (June 17) and "MAITLAND" oval arrival (June 18) in black. Palmer census # 139.

Provenance: RPSL Jubilee catalogue, page 53 (1935)

RL, Basel, 17 Oct 1972, lot 856

Christie's, London, 24 May 1995, lot 635

Collection "Carrington", Millenium, Sydney, 7 Nov 2012, lot 148.

21



400



Maurice Burrus



3221



Lars T. Amundsen

- 3221** 1 d. reddish-rose, Plate I (position 5), with good to large margins all round, used with 2 d. deep blue (position 1, 'Fan as Plate III but with shading outside) with large margins all round and showing partial framelines on three sides, used on 1850 cover to London endorsed "p. Oriental" and tied by barred obliterations in black. Faint oval "SHIP LETTER / SYDNEY" in red (June 3) alongside and reverse with London arrival cds in red and rated "8d." for incoming Ship Letter. Palmer cover census #129. A fine and rare cover. Signed A. Diena. Cert. Behr (2004).

Provenance: Collection Maurice Burrus, Harmers, London, 11 Feb 1964, lot 277

Lars Amundsen, SG, London, 6-8 Dec 1967, lot 300

"España", Harmers, London, 23 March 1984, lot 2008

B. Behr, Private Treaty sale, 20 Feb 2004, lot 5436

"Carrington", Millenium, Sydney, 7 Nov 2012, lot 147.

3+ 21a



5'000



3222

Gibbons

Start price
in CHF

- 3222** 2 d. bright blue, Plate II (positions 22-23), a fine horizontal pair in a vivid shade with good to large margins all round, used on 1850 entire letter from Sydney to Geelong, tied in black by faint obliterations with framed "TOO LATE" handstamp adjacent (extremely rare on Sydney View covers). Manuscript dated at lower left "June 28, 1850" and reverse with "SYDNEY / 🇺🇦 / NEW SOUTH WALES" despatch datestamp "MELBOURNE / 🇺🇦 / PORT PHILLIP" oval and "GEELONG / 🇺🇦 / PORT PHILLIP" arrival (July 9). Palmer cover census #148. A fine and most attractive entire.
Provenance: Harmers, Sydney, 26 Sept 1969, lot 80; RL, London, 14 March 1978, lot 53
Collection "Besançon", Corinphila sale 221, Zurich, 23 Nov 2017, lot 6030.

24 ✉

5'000



3223

- 3223** 2 d. blue, Plate II (position 4) showing "No Whip and inner circle intersects Fan" variety, and 3 d. yellow-green on soft yellowish paper (position 1), each with large margins and of fine fresh colour, used on 1850 entire letter from Parramatta to London tied by bold strikes of barred "2" obliterator in black. Oval "SHIP LETTER / 🇺🇦 / SYDNEY" in red at right (June 20), reverse with "PARRAMATTA / 🇺🇦 / NEW S. WALES" despatch in black (June 19) and London arrival cds (Nov 4) in red where rated "8d." for an incoming Ship Letter in manuscript. Slight internal repairs to chatty letter "Still living in the Union Inn Public House...Beef at 1d. per pound". Palmer cover census #141. A fresh and fine entire.
Provenance: Harmers, London, 31 Oct - 1 Nov 1955, lot 302
Christie's, London, 25 May 1995, lot 2115
Collection "Carrington", Millenium, Sydney, 7 Nov 2012, lot 192.

24d+ 39 ✉

2'000



3224

Gibbons

Start price
in CHF

- 3224 2 d. Prussian blue, on hard greyish wove paper, plate II, position 1, showing the "fan with shading outside" and "i of crevit omitted" varieties, unused, without gum, four large even margins, worn impression, deep shade, a lovely stamp. Cert. B.P.A. (1985). Gi = £ 15'000.

26a

(*)

3'500

1850 (Sept.): Two Pence, Sydney View, Plate Re-Engraved a Second Time by Henry C. Jervis (Plate III)

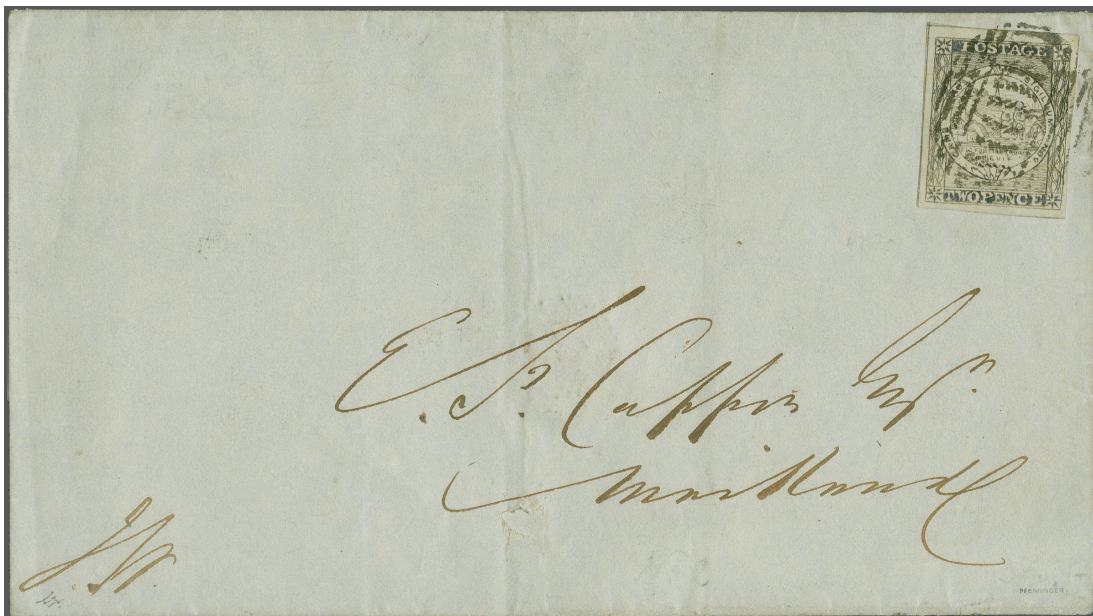


3225

- 3225 2 d. pale ultramarine on hard greyish wove paper, plate III, position 12, showing the "double lines on bale" variety, unused, without gum, exceptionally-centered within four balanced margins, intermediate impression, a choice example of this rare unused stamp. Cert Ceremuga (2012).

29c

(*)

4'000

3226

- 3226 2 d. ultramarine, Plate III (position 2), a fine example with large margins all round and showing the outer frame lines at top and at left, used on 1850 cover from Sydney to Maitland tied by obliterator handstamp in black. Reverse with fine circular "SYDNEY / 🇺🇦 / NEW SOUTH WALES" despatch datestamp (Oct 16) and fair only "MAITLAND / 🇺🇦 / NEW S. WALES" arrival both in black. Unrecorded in the Ben Palmer census. A fine and attractive cover. Signed Pfenninger.

Provenance: Abacus, Melbourne, 30-31 Aug 2020, lot 1375.

29

✉

2'000




View of Sydney



3227

Gibbons

Start price
in CHF

- 3227** 1851: 2 d. ultramarine, worn impression, Plate III (positions 1/13) a vertical pair with huge margins all round and showing complete marginal rule at left, overlapped by 1850 1 d. reddish-rose on yellowish paper, Plate I, with good margins all round and imperceptibly touched at lower right, used on 1851 cover to New Scone, nr. Perth, Scotland tied by barred "48" numeral obliterations of Tarcutta and by circular "SHIP LETTER /  / SYDNEY" datestamp in red (July 18). Reverse with Crowned oval "TARCUTTA" datestamp (July 14) and "GUNDAGI" datestamp (July 15) and Sydney cds (July 18) in black; London cds in red (Nov 29) and Perth cds (Nov 30) where charged "8d." due in manuscript for an incoming Ship Letter. Palmer cover census #198. A magnificent and most attractive cover. Signed Forster.

*Provenance: Collection "V.P. Manwood", Siegel, New York, 8 Nov 1995, lot 4208
Collection "Carrington", Millennium, Sydney, 7 Nov 2012, lot 229.*

29+ 3



5'000

1851 (Jan.): Two Pence, Sydney View, Plate Re-Engraved a Third Time by Henry C. Jervis (Plate IV)



3228

Gibbons

Start price
in CHF

- 3228** 2 d. ultramarine, Plate IV (position 12) showing "Unshaded Hill" variety, a fine example of good colour with good to large margins all round and showing marginal line complete at top and at left, used on 1851 O.H.M.S. cover from the Colonial Secretary's Office to Raymond Terrace, tied by barred obliterator in black with manuscript date "25 January 1851" at base. Reverse with circular "SYDNEY / 🇬🇧 / NEW SOUTH WALES" despatch datestamp (Jan 27) and oval "RAYMOND TERRACE / 🇬🇧 / NEW S. WALES" arrival (Jan 28) in black. The *second earliest usage of the 2 d. Plate IV* in the Palmer cover census (#53). Most attractive and scarce.

Provenance: Collection Geo. Boucher, RL, London, 19 April 1972, lot 745

RL, London, 26-27 Oct 1982, lot 264

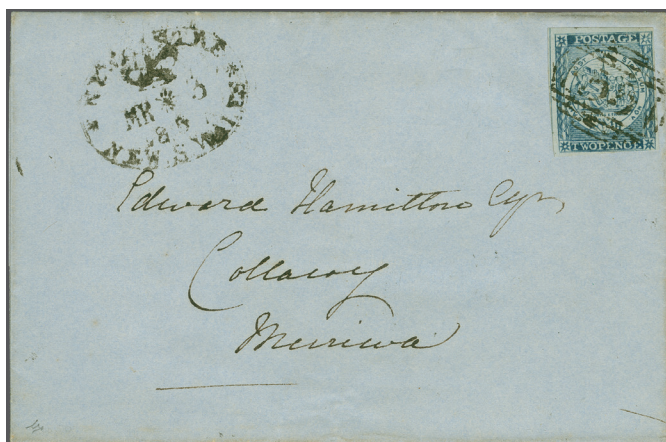
SG, Melbourne, 25 May 1994, lot 674

Millennium, Sydney, 21 Oct 2009

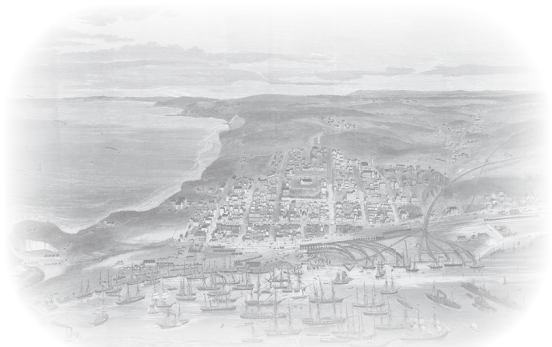
DF, Geneva, Dec 2011, lot 40419

Abacus, Melbourne, 30-31 Aug 2020, lot 1376.

31a

3'000

3229



View of Newcastle

- 3229** 2 d. Prussian blue on hard bluish-grey wove paper, Plate IV (position 10), a used example with large margins on three sides, imperceptibly touched at lower right and showing vertical rule at left, on 1851 cover from Newcastle to Merriwa tied by "55" numeral obliterator in black. Oval framed "NEWCASTLE / 🇬🇧 / NEW S. WALES" datestamp (March 3) at left and reverse with "MAITLAND / 🇬🇧 / NEW S. WALES" oval datestamp (March 4) in black. Palmer cover census #84. An attractive cover.
- Provenance: Collection "Carrington", Millennium, Sydney, 7 Nov 2012, lot 240.*

32

400



3230

Gibbons

Start price
in CHF

- 3230** 2 d. Prussian blue on thick vertically laid paper, plate IV, position 7, unused, without gum, four mostly large margins, close but clear at left, worn impression, upper left corner crease and trace of light paper toning, otherwise a fine example of this scarce stamp. Cert Ceremuga (2012) Gi = £ 15'000.

35

(*)

2'500

1851 (April): Two Pence, Sydney View, Plate Re-Engraved a Fourth Time by Henry C. Jervis (Plate V)



3231



3233

- 3231** 2 d. ultramarine, on hard greyish wove paper, plate 5, position 2, unused, without gum, four large margins all around, intermediate impression with pleasing colour, trivial tone spot at top of little importance only mentioned for strict accuracy, a rare stamp of lovely quality. Cert BPA (2017), RPSL (2017) Gi = £ 18'000.

Provenances: Victor Frankenstein, DF, 26-27 May 2000

'Carrington', Millenium Auctions, Sale 54, 7 November 2012, lot 259.

36

(*)

4'500

Charles Lathrop Pack



3232



Louise Boyd Dale



Alfred F. Lichtenstein

- 3232** 2 d. ultramarine, on hard greyish wove paper, Plate V (position 19), a large margined used example with part vertical rule at right, on 1851 small entire letter from Parramatta to Sydney, tied by "2" barred numeral obliterator in black. Reverse with "PARRAMATTA / 🏰 / NEW S. WALES" oval despatch datestamp (Aug 23) in black and Sydney arrival (Aug 25). Palmer cover census #240. File folds away from the very fine adhesive, a scarce entire.

Provenance: Collection Charles Lathrop Pack, Harmers, New York, 6-8 and 13-15 Dec 1944, lot 1089

Collection Alfred Lichtenstein & Louise Boyd Dale, Harmers, London, 14 May 1990, lot 61

Collection "Besançon", Corinphila sale 221, Nov 2017, lot 6046.

36

✉

1'000

- 3233** 2 d. dull ultramarine, on wove paper, plate V, position 16, unused, without gum, well-centered within large balanced margins, light tone spots at upper right, the stamp appears to have been cleaned slightly and the gum has been removed since issuance of certificate, a rare stamp with tremendous visual appeal. Cert Ceremuga (2000) Gi = £ 18'000.

37

(*)

3'000

1850 (Jan.): Three Pence, Sydney View



3234



3235

- 3234** 3 d. emerald-green on soft yellowish wove paper, position 25, unused, without gum, three large margins, just into at foot, intermediate impression with bright colour, trace of stain at upper right of little importance, an extremely scarce stamp. Cert Ceremuga (2012) Gi = £ 15'000.
- 3235** 3 d. yellow-green on thick greyish/bluish wove paper consistent with the later 1852 printings, position 7, unused without gum, four large margins, slightly blurred intermediate impression, horizontal crease, a scarce stamp of fine appearance. Cert Ceremuga (2012) Gi = £ 18'000.

Gibbons

Start price
in CHF

41

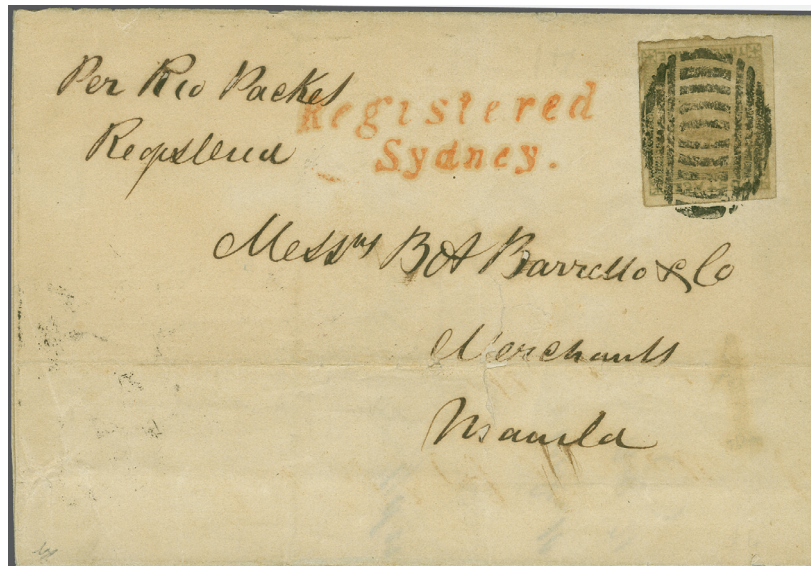
(*)

3'000

42

3'000

View of Manila



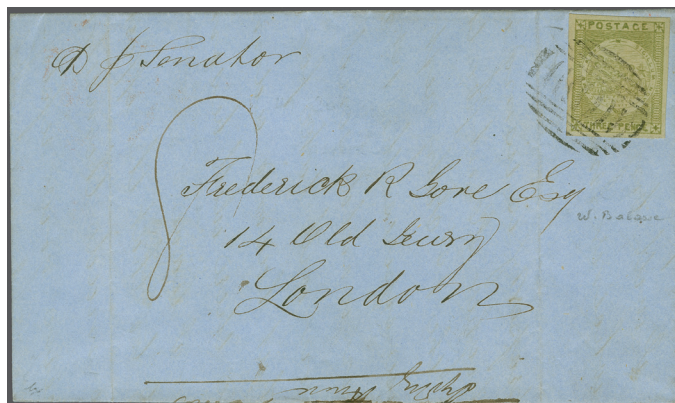
3236

- 3236** 3 d. yellow-green on soft yellowish wove paper, a used example with good margins all round, used on 1851 registered cover from Sydney to Manila, Phillipines endorsed "Per Rio Packet Registered", boldly tied by Sydney obliterator in black with two line "Registered / Sydney." in red alongside. Handstruck "1" (real) due marking at right and reverse with superb circular "SYDNEY / NEW SOUTH WALES" datestamp in black (Nov 17) and "MANILA / ISLs FILIPs." arrival cds (10 Jan 1852) in blue. Palmer cover census #282. The 3 d. paying the Ship rate - the registration fee was paid in cash. Slight closed tear in front panel not affecting the appearance of a very rare cover with just six Sydney View registered covers recorded, just three with the registration charge paid in cash. Rare.
Provenance: Christie's, Melbourne, 3 May 1998, lot 13
DF, Geneva, April 2007, lot 31101
Prestige, Melbourne, 11 May 2012, lot 427.

39

✉

1'200



3237



Alfred H. Caspary

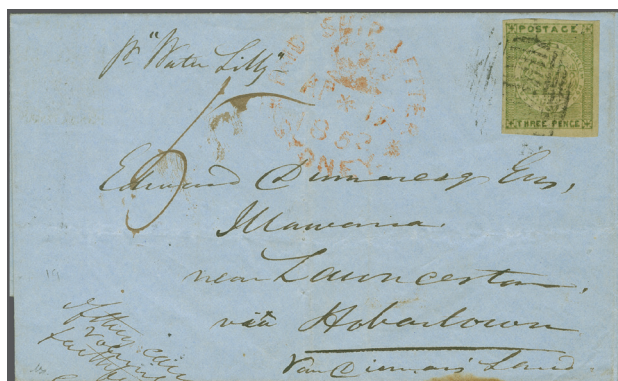
Gibbons

Start price
in CHF

- 3237** 3 d. yellow-green on soft yellowish paper (position 22, no lower left ray in upper left corner ornament), a superb example of fine impression and vivid colour with large even margins all round, used on 1852 second sheet of entire letter to London endorsed "*p.s Senator*" in manuscript, tied by fine strike of barred obliterator in black. Reverse with circular "SHIP LETTER / 🇺🇦 / SYDNEY" datestamp (May 18) in black with London arrival cds (Oct 1) in red and charged "8d." in manuscript for an incoming Ship Letter. Palmer cover census #61. Very modern contents: "*the cost of property in Sydney is rising...*". File folds well away from the delightful adhesive, a superb cover. Signed W. Balasse.

Provenance: Collection Alfred H. Caspary, Harmers, London, 6-9 Oct 1958, lot 121
Collection Raymond Wilson, Harmers, London, 20-21 My 1968, lot 264
RL, London, 19 April 1977, lot 65
Balasse, London, 3 Dec 1980, lot 555
Collection "España", 3 Dec 1984, lot 2382
Collection "Carrington", 7 Nov 20112, lot 287.

39 ✉ 2'500



3238



3239

- 3238** 3 d. yellow-green on soft yellowish wove paper (position 19) with "No Whip" variety, a used example of resonant colour with large margins all round paying Ship Letter charge, on 1852 cover from Sydney to Launceston via Hobart endorsed "*pr. Water Lilly*", tied by light strike of barred obliterator in black. Circular "SHIP LETTER / 🇺🇦 / SYDNEY" datestamp at left (April 17) in red. Reverse with framed "SHIP LETTER" (May 7) in black and LAUNCESTON arrival cds (May 8) in black, where charged "5d." due in manuscript for an incoming Ship Letter. Central file fold. A fine and most attractive cover.

Provenance: Collection Slade Slade, Harmers, London, 3-4 April 1979, lot 251
Collection "Carrington", Millennium, Sydney, 7 Nov 2012, lot 286.

39a ✉ 750

- 3239** 3 d. yellow-green on thick grey wove paper (position 14), a fine example with large even margins all round with Laureated 1851 2 d. ultramarine, good to large even margins all round, on 1852 entire letter from Singleton to Bristol endorsed "*Paid*", tied by "66" barred obliterations of Singleton in black. Circular "SHIP LETTER / 🇺🇦 / SYDNEY" despatch cds in red (April 22) at left and reverse with oval "SINGLETON / 🇺🇦 / NEW S. WALES" despatch datestamps (April 15) in black, London cds in red (Aug 21) and Bristol arrival in blue, where charged "8d." for an incoming Ship Letter. Palmer cover census #43. A fine mixed issue franking paying the 2 d. inland rate and 3 d. Ship rate.

Provenance: Collection Dr. W.R.D. Wiggins, RL, London, 6-7 April 1982, lot 327
Collection Baetgen, RL, London, 9 March 1994, lot 2665
Collection "Carrington", Millennium, Sydney, 7 Nov 2012, lot 309.

42+ 56 ✉ 1'500



Panorama of Albury



3240

Gibbons

Start price
in CHF

3240 3 d. yellow-green on stout hard yellowish grey wove paper (positions 11-12-13-14), a horizontal strip of four with large even margins all round and of resonant colour with position 22 showing missing lower right ray in NW corner ornament, used on the famous 1852 entire letter from Tarcutta to Albury at six times the internal rate of 2 d. (the letter mentions enclosures), tied by crisp strikes of the "48" numeral obliterator in black. Reverse with oval "TARCUTTA / 🇺🇦 / NEW S. WALES" despatch datestamp (May 7) and fair Albury arrival of the following day. Ironed vertical file fold touches third stamp but a truly delightful entire, just two Sydney View 3 d. covers known with a strip of four, this being undoubtedly the finest.

Reference: Melbourne National Philatelic Exhibition catalogue, 1963, page 44

Adelaide National Philatelic Exhibition catalogue 1955, page 18

Philately from Australia, Dec 1958, page 112

Sydney National Philatelic Exhibition catalogue, 1959, page 17

Provenance: Collection Robson Lowe

Collection Dr. W.R.D. Wiggins, Robson Lowe, Zurich, 26 Nov 1981, lot 1733

Robson Lowe, London, 4 May 1983, lot 61

Collection "V.P. Manwood", Siegel, New York, 8 Nov 1995, lot 4312

Collection "Carrington", Millennium, Sydney, 7 Nov 2012, lot 298.

42

**15'000**



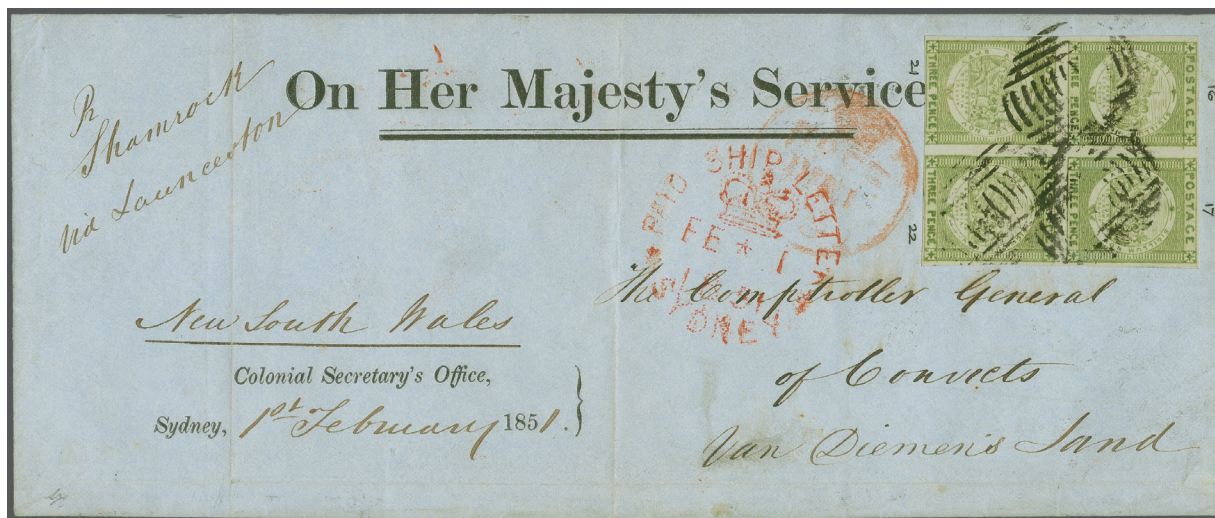
Charles Lathrop Pack



Alfred H. Caspary




Lars T. Amundsen



3241

Gibbons

Start price
in CHF

3241 1850: 3 d. bright yellow-green (positions 16-17 / 21-22), the magnificent block of four on hard thick bluish grey wove paper, with good mostly even margins all round, with position 22 showing 'missing lower left ray in NW corner ornament'; used on 1851 printed Official envelope from the Colonial Secretary's Office in Sydney to the Comptroller General of Convicts in Van Diemen's Land to pay the quadruple Ship Letter rate, endorsed "*Pr. Shamrock, via Launceston*"; tied by three strikes of the Sydney barred obliterator in black. Circular "PAID SHIP LETTER /  / SYDNEY" despatch in red (Feb 1) and Crowned "Free" in red applied on arrival with Launceston arrival cds on reverse (Feb 10) in black. Palmer cover census #63 - just two blocks of the 3 d. on cover are known, file folds well away from the wonderful block, a stunning cover of great importance to both Worldwide classic and Australian Philately, without doubt one of the most important covers in New South Wales Postal History and of impeccable provenance. Cert. RPSL (1962).

Reference: "Stamp Collecting", 2 March 1918, page 306

Australian Stamp Journal, May 1918, page 121

Provenance: Collection Charles Lathrop Pack, Harmers, New York, 6-8 and 13-15 Dec 1944, lot 1104

Collection Alfred H. Caspary, Harmers, London, 6-9 Oct 1958, lot 130

Collection Sir Andrew Clark, Harmers, London, 29-30 Jan 1962, lot 137

Collection Lars Amundsen, SG, London, 6-8 Dec 1967, lot lot 320

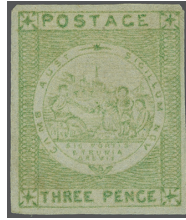
Collection V. Frankenstein, DF, London, 26-27 May 2000, lot 10740

Collection "Carrington", Millennium, Sydney, 7 Nov 2012, lot 299.

42



50'000



3242

Gibbons

Start price
in CHF

- 3242** 3 d. emerald-green on hard greyish/bluish paper, position 18, showing the "no whip" variety, unused without gum, well-centered amidst good to large margins, intermediate impression and of good colour, a rare variety, *potentially the sole example extant*, fine. Cert Ceremuga (2014) Gi = unpriced.

43b

(*)

4'000

1851/52: Laureated One Penny



3243



3244



3245



3246

- 3243** 1 d. vermilion on thick yellowish paper, unwatermarked, four ample to large margins, fresh colour, thinned and rebacked, lower left corner crease, yet a rare unused example, this particular shade and paper combination unlisted in Gibbons, fine appearance. Cert Ceremuga (2016).
- 3244** 1 d. scarlet on medium bluish paper, unused, without gum, clear to ample margins all around, bright colour, thin, repaired tear at right and other small flaws, a rare unused example, fine appearance. Cert Ceremuga (2016) Gi = £ 2'500.
- 3245** 1 d. scarlet on bluish medium wove paper, two leaves to the right of "SOUTH", from position 15, unused, without gum, clear to large margins on three sides, into design at top, a rare and possibly unique unused example. Cert Ceremuga (2016).
- 3246** 1 d. scarlet on bluish medium wove paper, unused, without gum, showing the "WALE" instead of "WALES" variety, three mostly good margins, just into frameline at top, two small blemishes on reverse slightly showing through at left and top, an extremely rare unused example of this variety. Cert Ceremuga (2016).

(*)

300

46

(*)

400

46b

(*)

1'000

46c

(*)

600

3247



3248



3249

- 3247** 1 d. vermilion on bluish medium wove paper, unused, without gum, margins mostly clear to good, just touching frameline at top, bright fresh colour, thin at upper left corner, else fine and scarce. Gi = £ 2'500.
- 3248** 1 d. brick red on bluish medium wove paper, unused, without gum, large margin at foot showing portion of upper frameline of adjacent stamp, into design at upper left else just clear, bright fresh colour, an extremely scarce stamp unused. Cert Ceremuga (2016).
- 3249** 1 d. brick red on bluish medium wove paper, "No leaves right of SOUTH" variety, unused, without gum, ample margins at left and right, touching to into frameline at top and foot, bright shade, an attractive and rare unused example of this variety. Cert Ceremuga (2016).

47

(*)

600

48

(*)

600

48a

(*)

600



3250

Gibbons

Start price
in CHF

- 3250** 1 d. orange brown on thick vertically laid bluish paper, from position 43, unused, without gum, margins touching frameline at upper right and lower left, rich deep colour and detailed impression, an attractive and rare stamp. Cert R.P.S.L. (1941) and Ceremuga (2012) $G_i = \text{£ } 9'000$.

49

(*)

2'000

1851/53: Laureated Two Pence, Plate I



3251



3252



3253

- 3251** 2 d. bright ultramarine on thick yellowish paper, plate 1, three ample to large margins, into frameline at top, early impression and bright shade, manuscript notation on reverse, a fine and pleasing stamp. Cert Ceremuga (2015) $G_i = \text{£ } 2'500$.
- 3252** 2 d. ultramarine on greyish medium paper, three large margins, just touching frameline at lower left, fine impression and pleasing deep colour, a few extraneous black spots at lower left, else a lovely and rare unused example, fine. Cert Ceremuga (2015) $G_i = \text{£ } 1'900$.
- 3253** 2 d. chalky blue on medium greyish wove paper, unused, without gum, good to large margins all around, fresh and delicate shade, a rare stamp, particularly desirable in this quality. Cert Ceremuga (2015) $G_i = \text{£ } 1'900$.

51

(*)

600

52

(*)

500

53

(*)

500

3254



View of Brisbane

- 3254** 2 d. blue, of fine colour and with four large margins but affected by file fold, used in combination with 1850 Sydney View, 3 d. emerald-green on yellowish wove paper, three good margins, touched at base, on 1853 cover from Brisbane to Bristol, England tied by "95" barred obliterated. Originally mailed without adhesives with oval "BRISBANE / 🇬🇧 / NEW S. WALES" datestamp (Feb 22) and circular "SHIP LETTER / 🇬🇧 / SYDNEY" datestamp (Feb 28) in black. Presumably returned for postage with "To Pay 5" on obverse at left, reverse struck again with oval "BRISBANE / 🇬🇧 / NEW S. WALES" datestamp (March 11) and circular "SHIP LETTER / 🇬🇧 / SYDNEY" datestamp (March 16) in black and London cds (Aug 4) in red and rated "8d." to pay for incoming Ship Letter. Unrecorded in the Palmer cover census and a most unusual 'Queensland' usage.

41+ 54

✉

1'000



3255



3257



3258

Gibbons

Start price
in CHF

3255 2 d. greyish blue on medium greyish wove paper, good to large margins all around, detailed impression, hinge remnant causing slight bend, otherwise fine and rare. Cert Ceremuga (2015) Gi = £ 1'800.

55

(*)

500



Australian Club in Sydney



3256

3256 2 d. ultramarine on bluish medium paper, Plate I, all with good to large margins all round, with 2 d. Prussian blue, Plate III, clear to ample margins all round, used on 1855 registered cover to the Australian Club, Sydney tied by barred numeral "35" and by two line "REGISTERED/GOULBURN" with repeated strike below the adhesives. Reverse with oval "GOULBURN / NEW S. WALES" despatch (March 13) and faint circular Sydney arrival (March 16) in black. Filing spike hole affects lower left corner of fourth stamp, but a cover of great aesthetic appeal and very rare. Signed Forster. Provenance: Wise, Jan 1948

Collection "V.P. Manwood", Siegel, New York, 8 Nov 1995, lot 4399
Collection "Carrington", Millennium, Sydney, 7 Nov 2012, lot 366.

56+ 55

✉

1'200

3257 2 d. ultramarine, worn plate, on medium bluish wove paper, unused, no gum, ample to large margins all around, fresh colour, trivial adhesion to "N" of "New" mentioned for strict accuracy, fine and most attractive Gi = £ 1'500.

58

(*)

450

3258 2 d. ultramarine, Plate I, worn impression, unused, with disturbed part original gum, three large margins, just clear at foot, traces of doubling in places most noticeable in "TWO PENCE" and lower portion of tablet, scarce and fine. Cert Ceremuga (2019) Gi = £ 1'500.

59

(*)

400

1853 (Oct.): Laureated Two Pence, Plate II



3259



3260



3261

Gibbons

Start price
in CHF

- | | | | | |
|------|--|-------|-----|------------|
| 3259 | 2 d. Prussian blue, unused, no gum, worn impression, on medium bluish wove paper, large balanced margins all around, showing outer frameline on all sides, fresh colour, an exceptional example and beautiful stamp in all respects, very fine. Cert. Ceremuga (2012) Gi = £ 2'750. | 62 | (*) | 800 |
| 3260 | 2 d. Prussian blue, worn impression on medium bluish wove paper, unused, without gum, four large even margins, showing the "No bow at back of head" variety, delicate light shade, small tone spot on Queen's head, a lovely stamp. Cert R.P.S.L. (1928) and Ceremuga (2015) Gi = £ 2'750. | 62var | (*) | 800 |

1855 (Sept.): Laureated Two Pence, Plate Re-Engraved by Henry C. Jervis (Plate III)

- | | | | | |
|------|--|----|-----|------------|
| 3261 | 2 d. Prussian blue, on medium greyish wove paper, unused, without gum, margins mostly clear, fresh colour, small nick in left margin and miniscule tone spots at lower left, trivial given the scarcity of unused examples of this printing, else fine. Cert Ceremuga (2015) Gi = £ 1'500. | 64 | (*) | 400 |
|------|--|----|-----|------------|

1852 (Dec.): Laureated Three Pence



3262



3264



3263



Philipp von Ferrary



R. B. Yardley



Lars T. Amundsen

- | | | | | |
|------|---|----|-----|--------------|
| 3262 | 3 d. green on medium greyish blue wove paper, from position 32, unused, without gum, three clear to good margins, into design at right, typical for these tightly-spaced stamps, bright colour, clear impression, fine and rare. Cert Ceremuga (2012) Gi = £ 5'500. | 66 | (*) | 1'200 |
| 3263 | 3 d. dull yellow green on medium greyish blue wove paper, unused, with part original gum, upper right corner vertical pair, with sheet margins, touching to into design at left and foot, pencil notation of engraver "J. Carmichael" in selvage, good colour, vertical crease at left, horizontal crease through top stamp, small pinhole and repaired scissor cut, yet an attractive and extremely rare multiple, with even unused single examples being scarce. Cert R.P.S.L. (1959).
<i>Provenance: Ferrari de la Renotière, 5-7 April, 1922, lot 131
R. B. Yardley, H. R. Harmer (London), 11-12 December 1944
H. R. Harmer (London), Sale 2705, 25 March 1957
Lars Amundsen, Stanley Gibbons Auctions, 6-8 December, 1967, lot 332
Robson Lowe, Sales 4163-4, 19 April 1977
'Manwood', Siegel (NY), Sale 770, 8 November 1993, lot 4413.</i> | 67 | * | 3'000 |
| 3264 | 3 d. emerald-green, early impression on medium greyish blue wove paper, unused, no gum, large margins at top and bottom, showing portion of adjoining stamp at top, shaved at right, good colour, thin near right margin, else fresh and fine. Cert Ceremuga (2020) Gi = £ 7'500. | 69 | (*) | 1'500 |

1852 (April): Laureated Six Pence, Plate I



3265



3266



3267



3268

Gibbons

Start price
in CHF

3265	6 d. chocolate brown, plate proof on thick white wove paper, Plate I, earliest impression, deep colour chiefly ample margins just touching at upper right, a rare proof, with only six examples recorded, fine. Cert Ceremuga (2016).	72P	(*)	300
3266	6 d. Vandyke brown on medium bluish-grey wove paper, Plate I, part original gum, four ample and even margins, rich colour, a rare unused example in this shade, attractive and fine. Gi = £ 7'500.	73	*	2'000
3267	6 d. chocolate-brown on bluish wove paper, Plate I, unused, without gum, three large margins, showing portion of adjoining stamp at left, barely touching at right, rich dark shade, a rare unused example, fine. Cert Ceremuga (2013). Gi = £ 7'500.	75	(*)	1'800
3268	6 d. grey brown on medium blue grey wove paper, Plate I, worn impression, unused, without gum, margins close to into design in places, a rarely seen unused example. Cert Ceremuga (2020). Gi = £ 7'500.	76	(*)	1'500

1853 (June): Laureated Six Pence, Plate Re-Engraved by Henry C. Jervis (Plate II, Coarse Background)



3269



3270

3269	6 d. brown, on thick grey-bluish wove paper, Plate I, unused, without gum, margins clear to ample on three sides, just touching at right, rich deep shade, small thins, otherwise fine and attractive. Cert RPSL (1980). Gi = £ 6'000.	77	(*)	1'500
3270	6 d. grey-brown on thick grey-bluish wove paper, Plate I, unused, without gum, margins mostly clear to ample, touching in places, true fresh colour, fine. Cert R.P.S.V. (2012). Gi = £ 5'500.	78	(*)	1'200

1853 (May): Laureated Eight Pence



3271



3272

3271	8 d. orange-yellow on medium blued paper, position 10, unused, without gum, ample margin at right, others clear to touching in places, fresh colour, stain at right, yet an extremely scarce stamp of otherwise fine appearance. Cert Ceremuga (2001). Gi = £ 20'000.	80	(*)	3'500
3272	8 d. orange-yellow on thick greyish-blue paper, position 32, unused, without gum, an early impression showing the "no lines in spandrels" variety, margins close to touching in places, fresh deep colour, a fine and pleasing example of this rare stamp, particularly desirable with the variety, <i>believed to be the only recorded example</i> . Cert Ceremuga (2020). Gi = £ 20'000+.	80c	(*)	4'000

1854 (Jan.-March): Laureated with Double-Lines, Watermark Figures



3273



3274

		Gibbons		Start price in CHF
3273	1 d. red-orange on yellowish wove paper, watermark double lined "1", unused, without gum, chiefly good to large margins all around, just touching at lower right, bright fresh colour, fine. Cert Ceremuga (2016) Gi = £ 650.	82	(*)	180
3274	1 d. red-orange on yellowish wove paper, watermark double lined "1", unused, large part original gum, chiefly good to large margins all around, just touching at lower right, fine. Gi = £ 650.	82	*	180



3275



3276



3277



3278



3279

3275	2 d. ultramarine on wove paper, plate III, watermark double lined "2", unused, without gum, large margins, particularly on three sides, pleasing fresh shade, which accompanying certificates notes as a dull Prussian blue, upper left corner skilfully repaired, a visually-appealing example. Cert. Ceremuga (2015) Gi = £ 500.	84	(*)	100
3276	2 d. ultramarine on wove paper, plate III, watermark double lined "2", unused, without gum, large margins all around, fresh and appealing colour, which accompanying certificates notes as a dull Prussian blue shade, a lovely stamp. Cert. Ceremuga (2015) Gi = £ 500.	84	(*)	150
3277	2 d. Prussian blue on wove paper, plate III, unused, without gum, mostly clear margins on all sides, touching at lower right, deep fresh shade, fine. Gi = £ 500.	85	(*)	120
3278	2 d. chalky blue on wove paper, plate III, unused, without gum, very large margins on three sides, close but clear at upper left, vertical crease, otherwise striking appearance. Cert Ceremuga (2009). Gi = £ 500.	86	(*)	100
3279	2 d. chalky blue on wove paper, plate III, watermark double lined "2", unused, without gum, large margins all around including sheet margin at top, bright colour, a scarce stamp with exceptional visual appeal. Cert Ceremuga (2015) Gi = £ 500.	86	(*)	160



3280



3281



"WAEES" variety,
the first "E" appearing
as an "L"
with stroke at top

3280	3 d. yellow-green on wove paper, watermark double-lined "3", unused, without gum, mostly ample margins, close but clear at right, negligible thin at upper left, else fine. Cert Ceremuga (2020) Gi = £ 950.	87	(*)	200
3281	3 d. yellow-green on wove paper, position 37, unused, without gum, "WAEES" variety, the first "E" appearing as an "L" with stroke at top, good to large margins, bright fresh colour, a lovely example of this scarce variety. Cert Ceremuga (2012) Gi = £ 2250.	87a	(*)	600

1854/59: Garter



3282



3283



3284



3285

		Gibbons		Start price in CHF
3282	5 d. dark green, unused, with redistributed original gum, four large balanced margins, striking deep colour, signed A. Brun, a lovely stamp, very fine. Cert B.P.A. (1978) $G_i = £ 2'000$.	88	*	500
3283	6 d. slate grey, watermark double-lined "6", unused, with large part original gum, clear to ample margins all around, deep colour, fine $G_i = £ 3'000$.	89	*	800
3284	6 d. greenish-grey, watermark double-lined "6", unused, ample to large margins on all sides, small stain at lower margin and to Queen's neck, a scarce unused example, without gum. Cert Ceremuga (2013) $G_i = £ 3,000$.	90	(*)	800
3285	6 d. bluish-grey on wove paper, watermark double-lined "6", unused, without gum, ample to large margins, sealed tear at lower left, else fresh and fine $G_i = £ 3'000$.	92	(*)	500



3286



3287



3288

3286	6 d. fawn, unused, without gum, watermark "8" instead of "6" variety, mostly large margins, just into frame at lower right, pleasing delicate shade, light diagonal crease at left, an otherwise fine example from the rare 1859 emergency printing. Cert Ceremuga (2013) $G_i = £ 4'500$.	93	(*)	1'200
3287	6 d. fawn, watermark double-lined "6" (inverted), horizontal pair, unused, large part original gum, light horizontal crease in lower margin, not detracting from the visual appeal of this otherwise fine and scarce multiple. Cert B.P.A. (2010) $G_i = £ 6'000$.	93	*	1'200
3288	6 d. grey, watermark double-lined "6", unused, without gum, large to very large margins all around, fresh colour, horizontal crease, yet a scarce and visually-appealing stamp. $G_i = £ 3'000$.	94	(*)	600

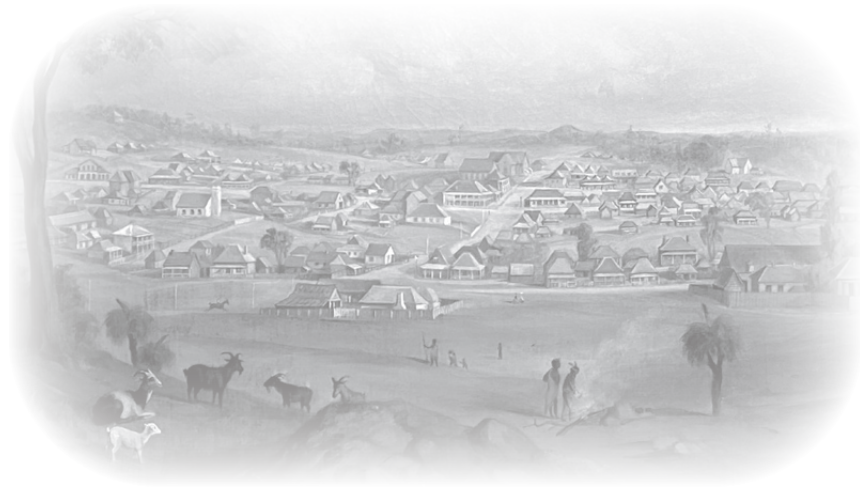


3289

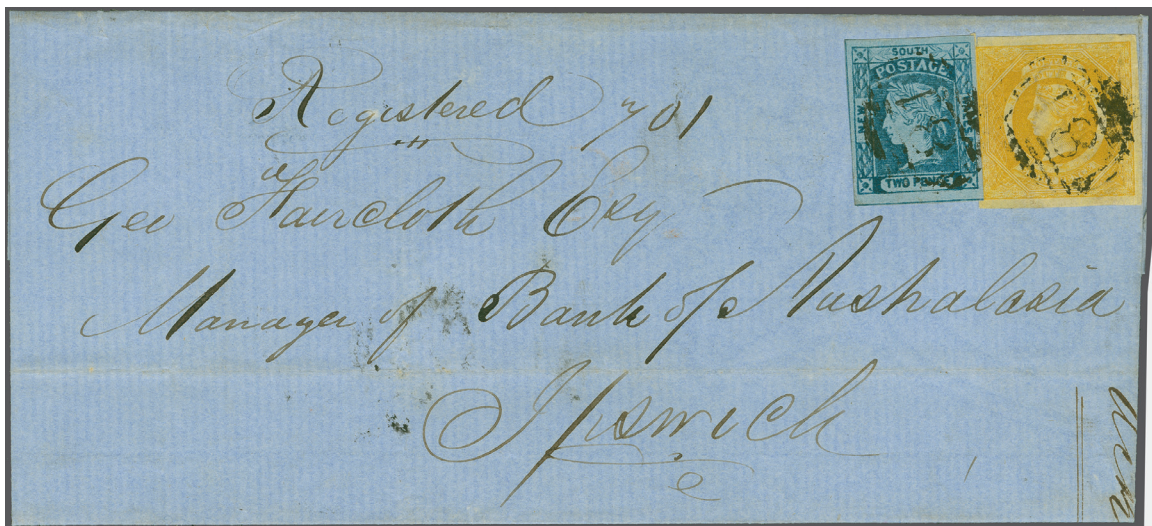


3290

3289	6 d. olive-grey, watermark double-lined "6", horizontal pair, unused, large part original gum, clichés misplaced by approximately 1 mm. vertically, fresh colour, a scarce multiple, particularly so with original gum, fine. Cert R.P.S.L. (1973) for the irregular block of three from which this pair was removed. Ceremuga (2009) $G_i = £ 6'000$.	95	*	1'500
3290	6 d. greyish brown, watermark double-lined "6", unused, small part original gum, four mostly large margins, scarce and fine $G_i = £ 3'000$.	96	*	800



View of Ipswich



3291

Gibbons

Start price
in CHF

- 3291** 8 d. golden yellow, a splendid example with huge margins, internal bend and just cut at top left corner where overlapped by 1854 Laureated 2 d. ultramarine, used on 1856 registered double rate cover from Warwick to the Bank of Australasia, Ipswich, Moreton Bay District (Queensland), cancelled by "81" barred numeral handstamps in black. Reverse with oval framed "WARWICK / NEW S. WALES" despatch (May 17), Crowned "DRAYTON" transit and "IPSWICH" arrival - this last with "MY 20" date inverted, all struck in black. The registration specific 6 d. adhesive was issued on Jan 1, 1856 and a registered cover without this stamp is most unusual. A charming cover bearing the 8 d. golden yellow -one of the finest such known bearing this rarity.

Provenance: Collection "V.P. Manwood", Siegel, 8 Nov 1995, lot 4583

Collection "Carrington", Millennium, Sydney, 7 Nov 2012, lot 569.

97+ 84

**5'000**



3292

3292 8 d. dull yellow orange, watermark double-line "8", large part original gum, minor gum crease noted for strict accuracy, four good to large margins, deep colour, a most appealing example of this rare stamp. Cert B.P.A. (2013) *Gi* = £ 24'000.

Gibbons	Start price in CHF
98	* 6'000



Philipp von Ferrari



3293



Arthur Hind

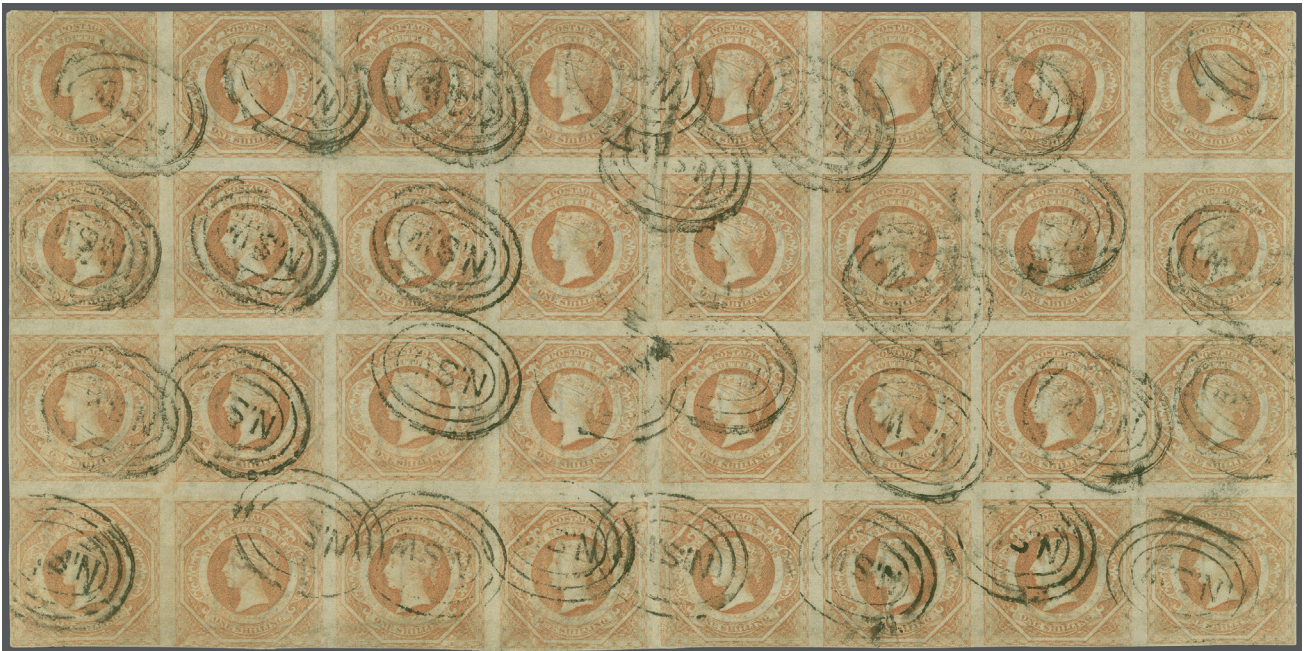
3293 8 d. dull yellow orange, watermark double-line "8", vertical pair, part original gum, chiefly ample to large margins on all sides, cut into slightly at upper right, detailed impression and bright fresh colour, an exceptional and important pair, being the only recorded unused multiple of this issue, and an important exhibition piece of the Diadem issue. Robson Lowe Certificate of Opinion. Cert B.P.A. (2010) *Gi* = £ 48'000.

Provenance: Collection Ferrari de La Renotière, Sale 3, April 5-7, 1922
 Arthur Hind, Sale 5, Harmers, London, July 2-4, 1934, lot 250
 G.J. Hutson; V.P. Manwood, Siegel, New York, November 8, 1995, lot 4585
 Collection "Alvarado" of New South Wales, Spink, London, May 19, 2010, lot 127.

98	* 10'000
----	-----------------



		Gibbons	Start price in CHF
3294	1 s. rosy vermilion, watermark double lined "12", unused, without gum, four large balanced margins, fresh bright colour, an exceptional and extremely attractive stamp, fine and rare. Cert R.P.S.L. (1938), Ceremuga (2014) Gi = £ 5'500.	99 (*)	1'500
3295	1 s. salmon, Plate Proof, four large margins including sheet margin at top, scattered tone spots and the odd wrinkle, typical of this thin paper, infrequently offered.	100P (*)	100
3296	1 s. pale red, watermark double-lined "12", unused, without gum, four clear to very large margins, fresh colour, trivial light corner crease at lower right noted for strict accuracy, a rare stamp. Cert Ceremuga (2014). Gi = £ 5'000.	100 (*)	1'200
3297	1 s. brownish-red, watermark double-lined "12", unused, without gum, very large margins on three sides, close but clear at left, pleasing colour, scarce and fine. Cert. Ceremuga (2014). Gi = £ 5'500.	101 (*)	1'500



3298

3298 1 s. pale brownish-red, wmk. double lined 12, imperforate, a used block of thirty-two (8 x 4), with shaved margins all round, cancelled by 31 strikes of the oval "NSW" framed handstamp in black. Small repairs in the central vertical margin and ironed bends, however this is a major multiple for the New South Wales specialist - *the single largest used multiple of any imperforate stamp of the Australian States recorded*. Rare and outstanding.
Provenance: Millennium, Sydney, 7 Nov 2012, lot 1052.

101 ☒ **2'500**

1856/59: Registration



		Gibbons		Start price in CHF
3299	6 d. vermilion & Prussian blue, unused, without gum, margins clear on three sides, touching oval at right, noticeably shifted central vignette, fresh colour, small central thin, fine <small>Gi = £ 3'000.</small>	102	(*)	500
3300	6 d. vermilion-red & blue and 6d. orange & blue on stout yellowish wove paper, part original gum, without watermark, two four-margin singles, one being from the upper left sheet corner, from the official reprints of 1888, a scarce duo, with only three sheets in either shade recorded, one of each of which are in the Tapling Collection in the British Library, attractive and fine. Cert Ceremuga (2012/4).	102(R)	*	150



3301

3301	6 d. orange & blue on stout yellowish wove paper, block of six, from the 1888 official reprint, unused, without gum, four clear to large margins, bright and fresh appearance, a scarce multiple, with only three sheets in this shade recorded, one of each of which is in the Tapling Collection in the British Library, fine. Cert Ceremuga (2014).	104(R)	⊞(*)	200
-------------	--	--------	------	------------

1856/60: Diadem



3302

3302	1 d. orange-vermilion, watermark double-lined "1", unused horizontal pair, large part original gum, four large balanced margins, fresh colour, light wrinkles as often found due to the typical heavy application of gum, a fine and scarce multiple <small>Gi = £ 900+.</small>	107	*	250
-------------	--	-----	---	------------



3303



The Post Office of Sydney

- | | | | | |
|-------------|---|---------|-----|-----------------------|
| | | Gibbons | | Start price
in CHF |
| 3303 | 1 d. orange-vermilion, watermark double-lined "1", vertical strip of three, unused, without gum, large margins on three sides, showing portion of adjoining stamp at lower left, touching at foot, exceptional fresh and deep colour, a lovely and scarce multiple <small>Gi = £ 1'350.</small> | 107 | (*) | 350 |



3304



3305



3306

- | | | | | |
|-------------|---|----------|-----|------------|
| 3304 | 1 d. orange-vermilion, watermark double-lined "1", unused horizontal pair with part original gum, experimentally rouletted on four sides, slightly into design at upper right, colour somewhat oxidised, yet a scarce pair, the rouletting done by James Dutton and submitted to the Postmaster General in 1856, with only one block of twenty four recorded. Cert Ceremuga (2012). | 107(var) | * | 150 |
| 3305 | 1 d. carmine vermilion, watermark double-lined "1", horizontal pair, unused, without gum, mostly large margins, close but just clear at lower left, fresh deep shade, fine. <small>Gi = £ 900.</small> | 108 | (*) | 200 |
| 3306 | 1 d. carmine vermilion, watermark double-lined "1", horizontal pair, unused, part original gum, large margins all around, dark shade, scarce and very fine <small>Gi = £ 900.</small> | 108 | * | 250 |



3307

- | | | | | |
|-------------|---|-----|-----|------------|
| 3307 | 1d. orange-red, watermark double-lined "1", unused, without gum, three margins, shaved at left, remarkable bright colour, fine <small>Gi = £ 450.</small> | 109 | (*) | 120 |
|-------------|---|-----|-----|------------|



3308



3309



3310



3311

			Gibbons	Start price in CHF
3308	2 d. deep turquoise blue, watermark double-lined "2", unused, without gum, exceptional margins on three sides, showing portion of adjoining stamp at left, close but clear at top, fresh colour, a most attractive stamp $G_i = \text{£ } 375$		110 (*)	100
3309	2 d. ultramarine, watermark single line "2", unused, without gum, large margins at top and bottom, close but clear at right and shaved at left, good colour, an uncommon example of this printing without SPECIMEN overprint, fine.		111 (*)	100
3310	2 d. ultramarine, plate 1, watermark double-line "2", large part original gum, four good to large margins, fresh and fine $G_i = \text{£ } 375$.		111 *	100
3311	2 d. ultramarine, watermark double-lined "2", horizontal pair, part original gum, four close to ample margins, impression showing signs of plate wear, good colour, a difficult unused multiple, fine $G_i = \text{£ } 750$.		111 *	200



3312

3312	1 d. blue, watermark double-lined "2", block of four, unused, with large part original gum, four good to large balanced margins, good colour, impression showing signs of plate wear, folded through central margin, not detracting from this superb and scarce multiple $G_i = \text{£ } 1'500+$.		112 田*	450
------	---	--	--------	-----



3313



3314



3315

3313	2 d. blue, watermark double-lined "5", unused, without gum, four balanced margins all around, striking bright colour, a lovely example of this scarce watermark variety $G_i = \text{£ } 950$.		112c (*)	250
3314	2 d. blue, watermark double-line "2", plate II, horizontal pair, large part original gum, good to large margins, vivid colour, a challenging multiple of this plate, fine. Cert RPSV (2013) $G_i = \text{£ } 1'900$.		114 *	500
3315	3 d. yellow-green, watermark double-line "3", unused, without gum, mostly good margins, touched at upper left, small central thin and traces of soiling in places but a scarce unused example $G_i = \text{£ } 2'500$.		115 (*)	300



View of Ipswich



3316

Gibbons

Start price
in CHF

3316 Registration 6 d. vermilion & Prussian blue imperforate, in combination with 1856/60 1 d. orange-red, 2 d. blue (two) and 3 d. yellow-green, all with geerally fine margins, used on 1856 registered quadruple rate cover from Warwick to the Bank of Australasia, Ipswich, Moreton Bay District (Queensland), cancelled by "81" barred numeral handstamps in black. Two line "REGISTERED / WARWICK" handstamp below and reverse with double ring Warwick despatch cds (Feb 17) and Ipswich arrival (Feb 18) struck in black. A famous, colourful and extremely rare cover. Cert. BPA (2002).

Provenance: Collection "V.P. Manwood", Siegel, New York, 8 Nov 1995, lot 4483.

102+ 109+
112+ 115



10'000



3317



3318

3317 3 d. dull green, watermark double-line "2" instead of "3", three mostly good to large margins, barely touched at top, lightly cancelled with "NSW" in ovals, pleasing fresh colour, slight thins of no importance given the rarity of this desirable watermark error, with approximately twenty examples recorded, its elusiveness further attested to by the absence of any examples in the Burrus, Caspary, Dale-Lichtenstein, Hind, Slade, or Wiggins collections. Cert Ceremuga (2016) Gi = £ 4250.

117a

1'000

1871/1902: Watermark Trials

3318 1 d. orange-vermilion, watermark Trial on 1856 issue, an unused example with good margins to large margins all round, watermark Crown over NSW, unused, without gum.

207 Trial

(*)

150