

SPAIN 1850 – 6 CUARTOS BLACK

Specialised Collection (part III)



Queen Isabella II

1850, 6 cs. black

*The National Mint and Stamp Factory in Madrid*

2477

Michel

Start price
in CHF

- 2477** 1850: Die Proof 6 cs. black, imperforate, printed on white wove unwatermarked paper, the only Proof example of the lithographic design made by Bartolomé Tomás Coromina, crisp detailed printing presenting fine detail of the Isabella II engraving, touching lower left otherwise four margins, small corner fold south east, very fine appearance, beautiful example, a unique piece. Cert. F Graus (2011).
Provenance: Manuel Gálvez.

(*) 15'000



2478

- 2478** 1850: 6 cs. black, plate 1, unused block of twenty one, no gum, with sheet margin left showing frameline, four good to large margins all round, vertical crease centrally, diagonal crease in margin into first stamp, tear to lower portion of margin not affecting block, thin to one stamp, overall a spectacular exhibition item, very fine to superb appearance, extraordinarily rare, one of the largest known unused blocks from this plate and in such fine condition. Cert. Comex (1989).

1 (*) 10'000



2479

Michel

Start price
in CHF

- 2479** 1850: 6 cs. black, plate 2, types 14-15-16 / 22-23-24, imperforate, unused, no gum, right marginal block of six, thin to one stamp not affecting appearance, fresh clean printing, very fine example, extremely rare unused multiple. Cert. F. Graus (1999).
Provenance: Enrique Magriñá.

1 (*)

750

2480



2481

- 2480** 1850: 6 cs. black, plate 1, type 20, used example, cancelled by a combination of the CAB.DEL BUEY/ESTREMADURA/BAXA mark in black and a spider in writing ink, stamp cut in two halves and restored, Antoni Roig expert mark to back, extremely rare in black. Cert. Comex (2018).
2481 1850: 6 cs. black, plate 1, types 14-15, used pair, cancelled with the MADRID GRILL in black, four margins, four good margins, attached to paper, scarce pair with Provisional Postmark.

1

200

1

100

2482

- 2482** 1850: 6 cs. black, plate 1, types 6-4-5-6 / 12-10-11-12 / 18-16-17-18, imperforate, used block of twelve, cancelled by lightly struck spider handstamps in black, touching one stamp top otherwise four good to large margins all round, thin affecting two stamps which does not affect the exceptionally fine visual appearance, a rare and impressive multiple. Cert. F. Graus (1996).
Provenance: Enrique Magriñá.

1

300



2483



2485

Michel

Start price
in CHF

- 2483** 1850: 6 cs. black, reconstruction of the initial report block of 24 types from plate 1, all cancelled by the PARRILLA framed grill handstamp of MADRID in black, mixed condition although nine four margins examples, a difficult group to assemble and as such very rare.

1

700



Arthur Hind



2484

- 2484** 1850: 6 cs. black, used, reconstruction block of fifty four, made up of two blocks of 24 (12 x 2) each and one of 6 (3 x 2), all heavily cancelled by spider handstamps in black, many defects, although a spectacular and eye catching piece, an important reconstruction, with philatelic pedigree, comes with diagram showing composition.
Provenance: The Collection of Arthur Hind, Harmer, London, 25th March 1935, lot 31.

1

8'000

- 2485** 1850: 6 cs. black, reconstruction of the report block of 40 types from plate 2, all cancelled by the spider cancel in blue, mixed condition although several fine examples, a very rare and extraordinary assembly.

1

700

*View of Sevilla*

2486

Michel

Start price
in CHF

2486

1850: 6 cs. black, plate 2, types 14 and 15, two singles used on Judicial cover front, from SEVILLA to BAENA, with pair of 12 cs. purple and two 10 r. greens, tied by spider hadstamp in black, Sevilla datestamp in red (6 June 1850) and Sevilla Court administration mark in black, some acid ink erosion and imperfections, although to be expected for such a large piece, an appealing tri-colour franking, exhibition item, an extraordinary rarity, of the upmost significance. Cert. CEM (2004) and F. Graus (2006).

1 (✉)

20'000



2487

Michel

Start price
in CHF

- 2487** 1850: 6 cs. black, plate 2, types 34-35-36 and 38-39-33, two strips of three used on piece of Judicial cover, tied by spider handstamp in black, four margins to both strips, piece has been folded vertically in two places not affecting stamps, a spectacular franking, extremely rare multiples combined, exceptional item especially stamps being in such fine condition. Cert. Comex (1975).

1

△

600

2488

- 2488** 1850: 6 cs. black, group of 31 examples reconstructed with BAEZA datestamps covering each day of January 1850 (1st to 31st), mounted neatly on an album page, mixed condition although almost half have four margin; the 1 Jan 1850 stamp is four margins and comes with a certificate as does the group; an extraordinary assembly and extremely rare. Cert. F. Graus (1998 and 2011).

1

1'800



The people of Soria dancing



2489

Michel

Start price
in CHF

2489 1850: 6 cs. black, plate 1, type 13, four margin used example on FIRST DAY COVER, addressed to ZARAGOZA, tied by ***/1-ENE-1850/SORIA circular datestamp in red, very fine and attractive, one of just four known examples, a rare and important cover. Cert. F. Graus (2001) and CEM (2007).
Provenance: Antonio Valdés, González Roldán and Luis Alemany.

1



6'000



2490

Michel

Start price
in CHF

- 2490** 1850: 6 cs. black, plate 2, a quadrisected example on cover, from VALLS to TARRAGONA, sent on 16 April 1850, arriving 23 April, accepted by the Post with Manuscript 'Ha Llegado en este estado' (it has arrived in this state) and signed Adm. A. Lazcano; an exceptional fraudulent usage of a quadrisected stamp accepted by the Postal service contrary to regulations; the earliest bisect of a Spanish stamp and unique. Cert. F. Graus (2011).

1

**3'000**

View of Jaca en Aragón



2491

- 2491** 1850: 6 cs. black, plate 1, type 4, used on cover, from JACA ARAGON to MADRID, cancelled by the ATAUD DE JACA stamped in blue (Jaca Coffin), alongside is the red datestamp JACA/15-FEB-1850/ARAGON, attractive cover, exceptionally rare, only known example. Cert. Comex (1969) and F. Graus (1994).

Provenance: Luis Cervera.

1

**3'500**



2492



View of Manresa

Michel

Start price
in CHF

- 2492** 1850: 6 cs. black, plate 1, type 16, used on cover from MANRESA to GANDIA, cancelled by the handstruck 'R' in red of Maresa, with MANRESA/CATALUÑA datestamp (25 Feb 1850) in red alongside, stamp just touched top of right side otherwise good to large four margins, slight soiling and creasing to cover but does not detract, exceptionally rare, the only known example, Antoni Roig expert mark to front. Cert.Comex (1974).

Provenance: Jean Dupont and Pedro Miranda.

1 ☒

2'400

2493



2494

- 2493** 1850: 6 cs. black, plate 1, type 10, used on cover front, from ANDUJAR to MALAGA, tied by the Andujar handstruck '6' in red, four good to large margins, fine fresh printing, an outstanding rarity, Antoni Roig expert mark to front. Cert. F. Graus (1985).

1 (☒)

1'200

- 2494** 1850: 6 cs. black, plate 2, type 30, used on cover, from ALCOY to ALICANTE, tied by a superb combination of the '1 R' double circle in red, and a spectacular spider handstamp in black, Alcoy datestamp (8 Jan 1851) also to front, with manuscript 'Con Cargo', and '1R' charge (the stamp circulated after the period of validity), arrival to reverse (8 Jan 1851), two vertical filing creases, one affecting the left side of the stamp, otherwise fine, a visually appealing, rare and almost certainly unique example. Cert. Comex (2007).

1 ☒

1'200

2495



2496

- 2495** 1850: 6 cs. black, plate 1, type 6, used on cover front, from LOGRONO to CALAHORRA, tied by a fine strike of the rare THREE PARALLEL BARS cancel in black, with Logrono datestamp in red alongside (3 March 1850), fine appearance, extremely rare. Cert. F Graus (1988).

Provenance: J.V. Senabre.

1 (☒)

1'200

- 2496** 1850: 6 cs. black, plate 2, used on a cover sent from MADRID to USAGRE, tied by a spider handstamp in black, readdressed to LLERENA with additionally applied 6 cs. black, plate 2, not tied but with two red cancellations washed out in order to defraud the Post; a most unusual example of Postal Fraud especially upon a readdressed cover. Cert. F. Graus (2013).

1 ☒

100



View of Alicante



2497

Michel

Start price
in CHF

- 2497** 1850: 6 cs. black, plate 1, types 21-22-23-24-19, used strip of five tied by spider cancel in black to a Bill of Landing cover, from ALICANTE to TARRAGONA and BARCELONA, carried by the schooner 'Carmen', with Alicante datestamp in red (12 April 1850) to front, the script reads "I certify that this ship registry bears the corresponding stamps" with signature, in remarkably good condition for a large envelope carried by sea, extremely rare example and an important large multiple on a Bill of Landing. Cert. F. Graus (2011).

1

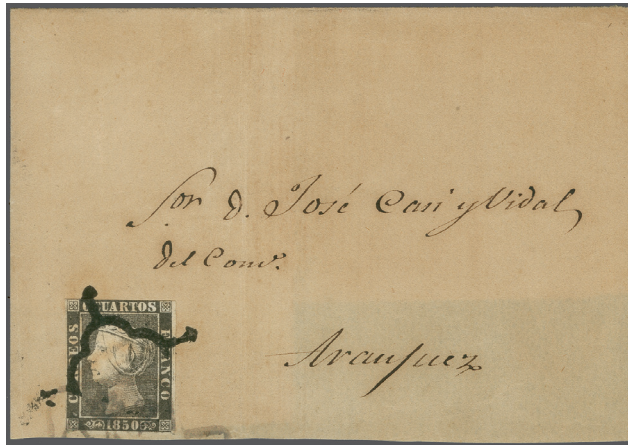
**2'500**

2498

- 2498** 1850: 6 cs. black, plate 2, type 11, used on cover from ZARAGOZA to MADRID, cancelled by 'I.R.L.' handstamp in blue, applied at Zaragoza, with faint ZARAGOZA/ARAGON datestamp to front, adhesive cut into lower right otherwise four margins, a rare cover, unique on a plate 2 of this issue, Antoni Roig expert mark to front. Cert. Comex (2010).

1

**1'700**



2499



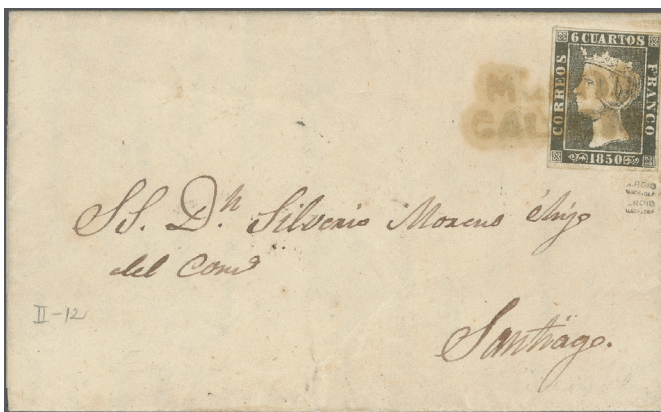
View of Arneys de Mar

Michel

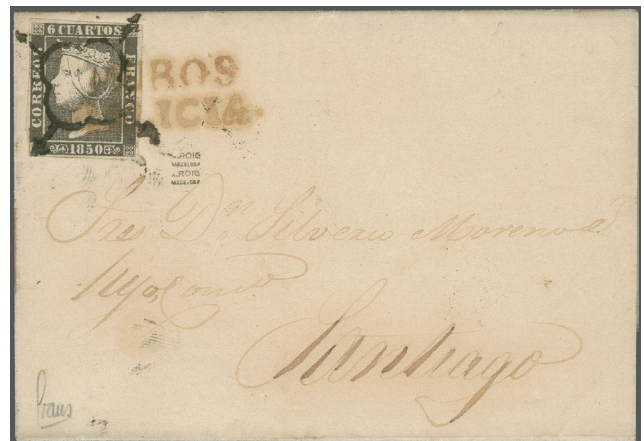
Start price
in CHF

- 2499** 1850: 6 cs. black, plate 2, type 4, used on reduced cover, from ARENYS DE MAR to ARANJUEZ, tied by AR/CATALUÑA in black applied in Arenys de Mar, also tied by spider cancel in black during transit presumably in Barcelona, a rare and unusual example. Cert. F. Graus (2013).

1

**700**

2500



2501

- 2500** 1850: 6 cs. black, plate 2, type 28, used on cover, from MUROS GALICIA to SANTIAGO, tied by the two-line MUROS/GALICIA in blue-green, four margins, very fine and fresh, uncreased and clean cover, very rare especially this fine. Cert. Comex (1977).

1

**600**

- 2501** 1850: 6 cs. black, plate 2, type 2, used on cover, from MUROS GALICIA to SANTIAGO, tied by a combination of a very fine strike of a black spider cancel and the two-line MUROS/GALICIA in red, four margins, uncreased and clean cover, very rare especially in this condition.

1

**200**

2502

- 2502** 1850: 6 cs. black, plate 2, type 5, used example, cancelled by a combination of a spider cancel in black and 'LUM..NAV..' in red, the pre-philatelic two-line handstamp of LUMBIER, four margins, fine appearance, although does have a shallow thin to back, a rare usage. Cert. F. Graus (2000).

1

200

Pre-Philatelic Cancellations



2503



2504



2505



2506

Michel

Start price
in CHF

- 2503** 1850: 6 cs. black, plate 1, type 1, used example, cancelled by the pre-philatelic GALICIA/CEREZAL in red, four good to very large margins with sheet marginal to top, thin to reverse, exceptionally rare, almost certainly a unique example. Cert. F Graus (1999). 1 **700**
- 2504** 1850: 6 cs. black, plate 1, type 12, used example, cancelled by the pre-philatelic YNOJa DEL DUQe / ESTREMADURA / BAXA handstamp in red, cut into and small pin hole, however a very rare cancel on the first issue, the sole recorded example. Cert. CEM (2007). 1 **600**
- 2505** 1850: 6 cs. black, plate 1, type 4, used example, cancelled by the pre-philatelic three-line MERIDA / ESTREMADURA/BAJA in red, cut into along base and bottom of right side, has a small tear top margin above 'CU', however very appealing visually and extremely rare. Cert. CEM (2008). 1 **400**
- 2506** 1850: 6 cs. black, plate 1, type 19, used example, cancelled by the pre-philatelic TRUGILLO / ESTREMADURA BAJA in blue, four margins, vibrant printing, a rare example. Cert. CEM (2007). 1 **200**



2507



2508

- 2507** 1850: 6 cs. black, plate 1, type 9-10, used horizontal pair, cancelled by the pre-philatelic CAZERES in black, four margins, good to fine appearance, extremely rare especially a multiple with this early handstamp. 1 **200**
- 2508** 1850: 6 cs. black, plate 2, type 7-8, used horizontal pair, cancelled by the C FRANQUEADO pre-philatelic franchise mark in red, not quite four margins, two small thins to back, but very attractive and exceptionally rare especially on a multiple. Cert. Comex (1974). 1 **1'000**

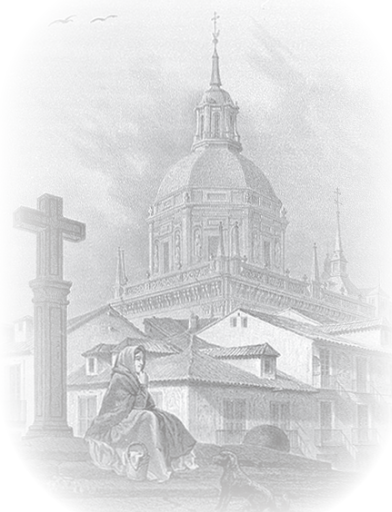


2509

- 2509** 1850: 6 cs. black, plate 1, type 24, cancelled by a pre-philatelic handstruck '6' in red of JEREZ de la FRONTERA, with corresponding datestamp of the city of origin (19 Feb 1850) to front also, four margins, fresh clean and exceptionally fine example, a rare and important cover; the only recorded example; with Antoni Roig expert mark to front. Cert. F. Graus (1990). 1 **2'000**



2510



View of San Isidro in Madrid

Michel

Start price
in CHF

- 2510** 1850: 6 cs. black, plate 2, type 24, used on cover, from MATARO to MADRID, tied by a pre-philatelic dater 'D 8/IR' in red applied on arrival in Madrid, also alongside the datestamp of origin (4 dec 1859), insufficiently franked with 'IR' charge mark in red and manuscript top left, two vertical and one horizontal filing crease not affecting the four margin stamp, a fine rare postage due cover. Cert. F. Graus (2010).

1

**1'700**

"Abano" Paid Cancellations



2511



2512



2513



2514



2515

- 2511** 1850: 6 cs. black, plate 1, type 4, used example, cancelled by a superb 'A' postmark in red of GANDIA, four even margins, extremely attractive, very fine to superb used, a rare cancel and especially in such exceptional condition. Cert. F. Graus (2008).
- 2512** 1850: 6 cs. black, plate 1, type 7, used example, cancelled by a fine strike of the 'A' postmark in red of GRANADA, three margins, very attractive, cut into right side otherwise fine to very fine appearance, a rare example. Cert. F. Graus (2012).
- 2513** 1850: 6 cs. black, plate 1, type 5, used example, manuscript 'A' in writing ink, origin thought to be OVIEDO, cut into, almost three margins, rub to surface and toned, however extraordinarily rare. Cert. CEM (2010).
- 2514** 1850: 6 cs. black, plate 1, type 6, used on small piece, tied by 'A' postmark in red, origin unknown, four margins, fine appearance, a scarce example. Cert. F. Graus (1997).
- 2515** 1850: 6 cs. black, plate 2, used example, combination of the CÓRDOBA 'A' postmark in black and a spider handstamp, four margins, central kink, pale shade, good used example of this rare cancel; Antoni Roig expert mark to back of stamp and pencil note 2-34.

1

1'000

1

600

1

400

1

**200**

1

200



2516



2517



2518



2519

Michel

Start price
in CHF

- 2516** 1850: 6 cs. black, plate 1, type 21, used example, cancelled by an 'A' postmark in black, origin unknown, four good even margins, fine to very fine appearance, a scarce example. Cert. F. Graus (1997).

Provenance: Enrique Magriñá.

1

200

- 2517** 1850: 6 cs. black, plate 1, type 13, used example, cancelled by a 'A' postmark in red of BEJAR (Salamanca), just four margins clear along the base (margin is close but appears large due to additional paper to back being added for cosmetic reasons), a fine and rare example of this cancel. Cert. Comex (2010).

1

200

- 2518** 1850: 6 cs. black, plate 1, type 3, used example, cancelled by the Abono 'A' postmark in red from TORRELAVEGA, four margins, fine used, scarce cancel. Cert. F. Graus (1999).

1

200

- 2519** 1850: 6 cs. black, plate 1, type 13, used example, cancelled by the Abono 'A' postmark in red from TRUJILLO, three margins, fine strike of this rare cancel. Cert. F. Graus (1996).

1

400



2520



2521



2522

- 2520** 1850: 6 cs. black, plate 1, type 20, used single, with 'A' postmark in red, origin unknown, four margins, fine appearance, a scarce example. Cert. F. Graus (2003).

1

100

- 2521** 1850: 6 cs. black, plate 2, type 18, used example, cancelled by blue 'AS' postmark of ABONO from Barcelona, four margins, stamp in two halves has been restored, thinned to back, fine appearance otherwise, scarce cancel.

1

100

- 2522** 1850: 6 cs. black, plate 1, type 5-6, used horizontal pair, cancelled by very fine strikes of the 'A' of ABONO cancel in red from GUADALAJARA, four margins, deep shade, fresh printing, vibrant impression, superb looking, extremely rare multiple with this rare cancel. Cert. Comex (2007).

1

1'000



2523

- 2523** 1850: 6 cs. black, plate 1, type 24, used on piece, cancelled by the 'A' within a circle of TALAVERA DE LA REINA in black and the Abono 'A' postmark in red from TRUJILLO, four margins, fine piece, a great rarity. Cert. Comex (2007).

1

△

500

*View of Burgos*

2524

Michel

Start price
in CHF

- 2524** 1850: 6 cs. black, plate 1, type 20, used on cover, from BURGOS to MADRID, cancelled by a very fine strike of the Burgos 'A' postmark in black and the datestamp of Burgos in red, four margins, very vivid printing, horizontal filing crease not affecting stamp, fine cover, extremely rare.

1

**2'000**

"Abano" AS Cancellations



2525

- 2525** 1850: 6 cs. black, plate 1, type 19, used on large fragment, from TARREGA to BARCELONA, tied by the Abono 'AS.' postmark in red from TARREGA, with very fine strike of the red TARREGA/CATALUÑA datestamp alongside (25 Feb 1850), good four margins, fresh deep shade, very fine piece, exceptional rarity, only recorded example. Cert. F. Graus (1992).

1

**2'000**



2526



2528

- 2526** 1850: 6 cs. black, plate 2, type 14, used on cover, from BARCELONA to MADRID, tied by a blue 'AS' postmark of ABONO (Abonada), with Barcelona datestamp alongside (2 Feb 1850), three margins, clear profile, horizontal filing crease not affecting stamp, a fine and very scarce example.

Michel

Start price
in CHF

1

**200**

2527

- 2527** 1850: 6 cs. black, plate 2, type 22, used on small piece, cancelled by the 'AS' postmark of ABONO in black from Barcelona, cut into top otherwise large margins, fine strike of this scarce cancel on piece.
- 2528** 1850: 6 cs. black, plate 2, type 22, used on cover front, from BARCELONA to MADRID, tied by the 'AS' postmark of ABONO in black and the Barcelona datestamp (17 Feb 1850), four margins, attractive and fine piece, scarce.

1

**100**

1

**100**

'O' Cancellations



2529



2530



2531

- 2529** 1850: 6 cs. black, plate 1, type 3, used example, cancelled by a combination of the Abono 'A' postmark in red from TORRELAVEGA and the 'O' cancel of the same also in red, four margins, a great rarity, the only recorded example with both cancels. Cert. F. Graus (2007).
- 2530** 1850: 6 cs. black, plate 1, type 4, used example, cancelled by an 'O' cancel applied at AREVALO, three margins, attractive appearance, a rare example. Cert. Comex (2007).
- 2531** 1850: 6 cs. black, plate 1, type 5, used on small piece, tied by an attractive 'O' cancel in black from CACERES, four margins, fresh bright printing, fine used, very rare example. Cert. Exfima (1974).

1

700

1

300

1

**200**



2532

Michel

Start price
in CHF

- 2532** 1850: 6 cs. black, reconstruction of the initial report block of 24 stamps type 1, all cancelled by the 'O' handstamp in red of ALICANTE, mixed condition although very attractive visually, an extremely rare assembly.

1

1'200



View of Huesca



2533

- 2533** 1850: 6 cs. black, plate 1, type 9, used on cover, from VERGARA to HUESCA, cancelled by a very attractive 'O' cancel in blue applied at Vergara, with VERGARA/VITORIA datestamp alongside, four margins, a great rarity, the only known example. Cert. Comex (1986) and F. Graus (1986).
Provenance: Juan Senabre and Pedro Miranda.

1



2'200



2534



2535

Michel

Start price
in CHF

- 2534** 1850: 6 cs. black, plate 1, type 8, used on cover front, from AREVALO to MADRID, cancelled by a red 'O' cancel, applied at AREVALO, with datestamp alongside, three margins, vary rare item. Cert. Comex (1978).

1 (X)

1'800

- 2535** 1850: 6 cs. black, plate 1, type 8, used on cover, from ALICANTE to MADRID, cancelled by a very attractive strike of the 'O' cancel applied at ALICANTE, datestamp in red alongside, four margins, horizontal filing crease centrally not affecting stamp, a fine and rare cover.

1 X

300

Numeral Cancellations



2536



2537

- 2536** 1850: 6 cs. black, plate 1, type 10, cancelled by the handstruck '1' in red of Ocaña, stamp fixed to a small piece, four margins and very fine appearance, rare example. Cert. Comex (2010).

1

300

- 2537** 1850: 6 cs. black, plate 2, type 3, cancelled by a combination of the handstruck '3' in red of unknown origin, and the '11.' in blue of Zaragoza, very fine four margins, bright vivid printing, superb appearance, outstanding, the only known example. Cert. F. Graus (1985).

Provenance: Juan Senabre and Pedro Miranda.

1

700

2538



2539



2540

- 2538** 1850: 6 cs. black, plate 2, type 18, cancelled by the handstruck '5.R' in red, attributed to MADRID, four margins, very fine appearance, extremely rare and most attractive. Cert. Comex (1974) and F. Graus (1997).

1

300

- 2539** 1850: 6 cs. black, plate 2, type 4, cancelled by the handstruck '5' in red of unknown origin, four good margins, very fine and fresh appearance, extremely rare example and probably unique on this issue, Antoni Roig expert mark to reverse.

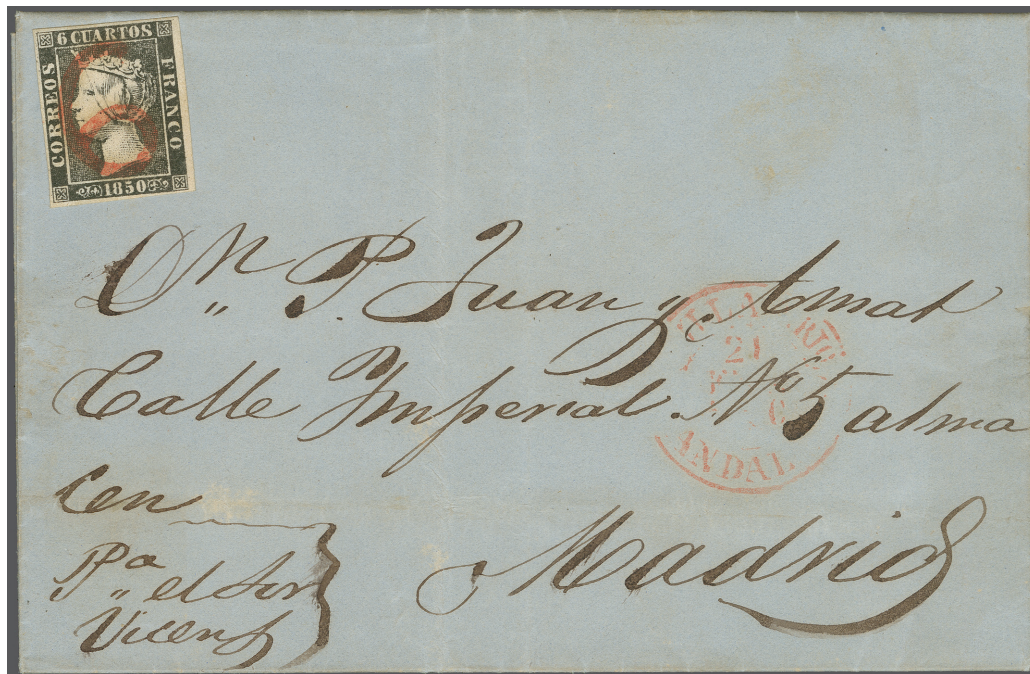
1

300

- 2540** 1850: 6 cs. black, plate 2, type 36, cancelled by a spectacular combination of the handstruck '5' in red of unknown origin and a spider cancel in black, printed upon thin paper, cut into down the right side otherwise fine, an outstanding rarity. Cert. F. Graus (2009).

1

300



2541

Michel

Start price
in CHF

- 2541** 1850: 6 cs. black, plate 1, type 24, used on cover from VILLA DEL RIO to MADRID, cancelled by a superb upright and perfectly centered handstruck '6' in red of Villa del Rio, with VILLA D. RIO/ANDAL. A. datestamp alongside, stamp is very fine to superb, with four good to large margins, bright vibrant printing, a most attractive and rare example on cover. Cert. F. Graus (1988).
Provenance: Juan Senabre.

1



2'500



2542



View of Santiago de Compostela

- 2542** 1850: 6 cs. black, plate 2, type 29, used on cover from ESTEIRO to SANTIAGO, tied by the handstruck '10' in red, with pre-philatelic two-line GALICIA/NOVA in green to front, stamp not quite four margins, although very fine appearance, a clean and uncreased cover, most attractive, exceptionally rare, unique example. Cert. Comex (1997).
Provenance: Tollu.

1



2'500



2543



2544



2545

Michel

Start price
in CHF

- 2543** 1850: 6 cs. black, plate 2, type 23, used, cancelled by the handstruck '10½' in red of ZARAGOZA, a two to three margin example, fine strike of this rare handstamp, a scarce example. Cert. CEM (2007). 1 **100**
- 2544** 1850: 6 cs. black, plate 1, type 11, used example, cancelled by the handstruck '11' in red of ORIHUELA, four good margins, two shallow thins to reverse almost imperceptible, very fine appearance, an exceptional rarity, the only known example recorded, Antoni Roig expert mark to back. Cert.F. Graus (1985). 1 **600**
- 2545** 1850: 6 cs. black, plate 1, type 23, used example, cancelled by a combination of a red MONTILLA/ANDAL datestamp and a handstruck '11' in black, four margins, good to fine used, a rarity, very few known. 1 **200**



2546



2547

- 2546** 1850: 6 cs. black, reconstruction of the initial report block of 24 stamps type 1, all cancelled by the dotted '11' limado handstamp in blue of SEVILLA, mixed condition although some finer examples, very difficult assembly and rare. 1'000
- 2547** 1850: 6 cs. black, plate 2, type 37, used on cover from ZARAGOZA to HUESCA, cancelled by the '11' handstamp in blue of Zaragoza, with dispatch datestamp to reverse (26 Feb 1850), cut into down left side otherwise good margins, horizontal filing crease through top of stamp, a clean and good to fine example of this rare cancel on cover. 1 **100**



2548



2549

- 2548** 1850: 6 cs. black, plate 2, type 30, used example, cancelled by a '14' handstamp in black, origin unknown, four even margins, slight rub to surface otherwise very fine, exceptionally rare cancel, especially struck almost upright and complete, outstanding rarity. 1 **600**
- 2549** 1850: 6 cs. black, plate 2, type 3, used example, tied to small fragment by a blue handstruck '15', origin unknown, also part of a spider cancel in black, four margins, fine example, exceptional rarity. 1 **600**

Manuscript Cancellations



2550

Michel

Start price
in CHF

- 2550** 1850: 6 cs. black, plate 2, type 16, used on piece, tied by THREE INK LINES in manuscript, four margins, fine appearance although some climatic toning, a rare piece. Cert Comex (2009).

1

△

100

Commercial Cancellations



2551

- 2551** 1850: 6 cs. black, plate 1, type 12 and 10, used pair, cancelled by a spider handstamp in black and a commercial oval cancel 'TARRAGONA' which is also in black, very fine four margin example, extremely rare multiple and scarce this fine. Cert. F. Graus (2011).

1

500

Seal Cancellations



2552



2553

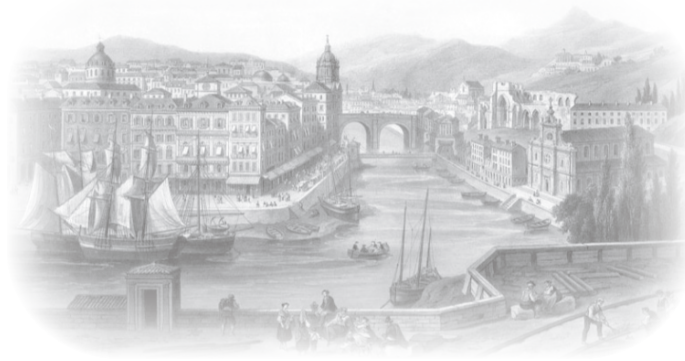
- 2552** 1850: 6 cs. black, plate 1, type 16, used, with a MA Seal cancel in black, origin of which is unknown, four margins, fine used, very rare, probably a unique example. Cert. F. Graus (1997).
- 2553** 1850: 6 cs. black, plate 2, type 10, used, cancelled with a combination of a BAEZA DE MÁLAGA datestamp in red and a black Seal cancel, origin unknown, cut into top and base otherwise with margins, a rare combination. Cert. F. Graus (2013).

1

600

1

300



View of Bilbao



2554

Michel

Start price
in CHF

- 2554** 1850: 6 cs. black, plate 2, type 10, used on cover, from GIJÓN to BILBAO, tied by the datestamp of origin and cancelled by an unknown Lacrador within P.V. Seal cancel in black, with Gijón datestamp alongside, vertical filing crease not affecting the three margin stamp, an exceptionally rare combination cover, certainly unique. Cert. F. Graus (2013).

1

**2'500**

2555



2556

- 2555** 1850: 6 cs. black, plate 2, type 30, used on small piece, tied by a combination of a rare LACRADOR DE LA ORDEN DE FRANCISCANA Seal cancel in red and a black spider handstamp, four close to very large margins, slight climatic discoloration, otherwise very fine, an outstanding and unique piece. Cert. F. Graus (1990).
Provenance: Pedro Miranda.
- 2556** 1850: 6 cs. black, plate 2, type 25, used with Lacrador Seal cancel in red, unknown origin, four margins, fine appearance, rare usage.

1

**1'200**

1

100