

Tuesday 26 May 2015, 17:30 h



**SPECIAL VIEWING IN COPENHAGEN:**

Friday 8 May 2015 from 13:00 h to 18:00 h at the  
Hotel Marriott Bella Sky Copenhagen - Meeting Room 69/70  
Center Boulevard 5 - 2300 Copenhagen S

## Scandinavia (Part I)



# Denmark



Frederick VII King of Denmark 1848-1863



Castle of Friedrichsborg, Copenhagen



3001



3002



3003



3004

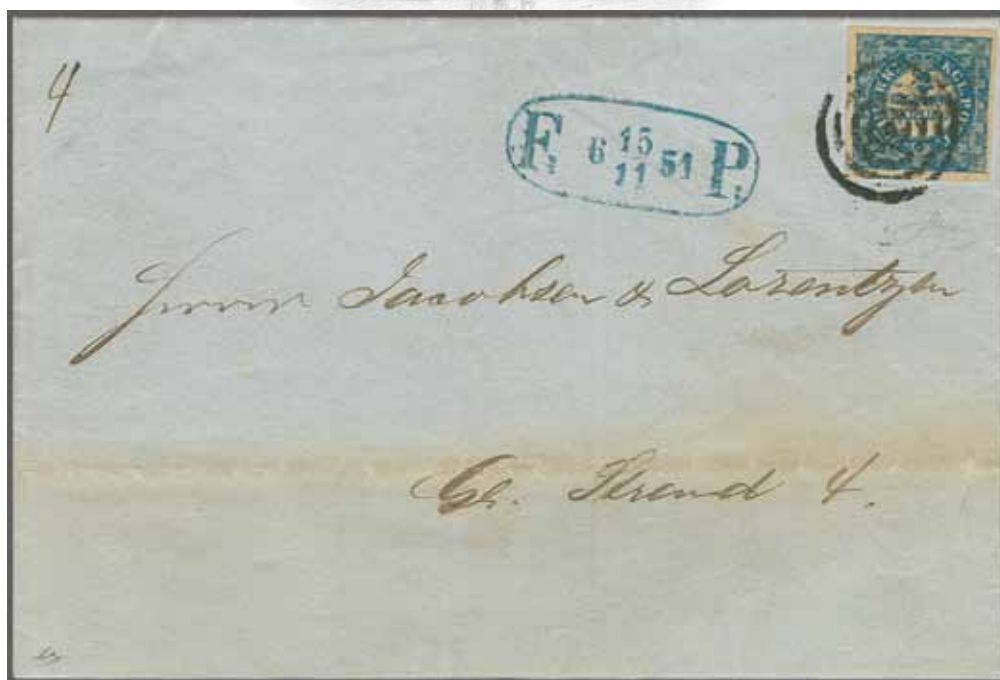
## 2 Rigsbank Skilling: First Printing (Ferslew) May 1851

- 3001** 2 rbs. blue, Plate I, Type 3, position 59 on the sheet, one of the four 'Substituted (or reserve) Clichés', with a Type 3 stamp used in place of a Type 1, showing a large white flaw over AE of FRIMAERKE; a very fine large margined used example of excellent impression and colour, lightly cancelled by concentric ring mute handstamp in black. Certs. Dr. A. Debo (1987), C. A. Møller (2004), L. Nielsen (2008) Mi 2/I = € 2'200+/Facit = 25'000+ skr.  
*Provenance: Collection Christian Andersen (Oct 1989), lot 2526.*
- 3002** 2 rbs. blue, Plate I, Type 9, position 18 on the sheet, one of the four 'Substituted (or reserve) Clichés', with a Type 9 stamp used in place of a Type 4, showing a white flaw on I of FRIMAERKE and dot between M and AE of FRIMAERKE; a fine large margined used example of fine impression and colour, cancelled by concentric ring mute handstamp in black. Certs. S. Kaiser (1981), C. A. Møller (1993) Mi 2/I = € 2'200+/Facit = 25'000+ skr.
- 3003** 2 rbs. blue, Plate II, Type 5, position 29 on the sheet, a very fine large margined used example tied to piece by Copenhagen '1' numeral in black. A very fine stamp. Cert. L. Nielsen (1999) Mi 2/I var = € 2'200+/Facit = 18'000 skr.  
*Provenance: Collection Gene Scott (Oct 1999), lot 31.*
- 3004** 2 rbs. blue, Plate I, Type 10, position 48 on the sheet, with Major Flaw showing base of '2' almost touching S of RIGSBANK and KCL for KGL flaw, a fine large margined used example, lightly cancelled by Copenhagen '1' numeral in black. A fine example of a very rare stamp. Certs. Dr. Debo (1979), C. A. Møller (2002) Mi 2/I var = € 2'200+/Facit = 18'000 skr.  
*Provenance: Corinphila sale 133 (June 2002), lot 1524.*

Facit	Start price in CHF	Start price approx. €
1/Iv5	<b>750</b>	(€ 715)
1/Iv5	<b>750</b>	(€ 715)
1/Iv2     △	<b>500</b>	(€ 475)
1/I	<b>400</b>	(€ 380)



Palace of Roseberg, Copenhagen



3005

Facit

Start price  
in CHF      Start price  
approx. €

- 3005** 2 rbs. blue, Plate I, Type 2 showing 'Disjoined numeral '2'', a fine large margined example used on local 1851 entire letter, tied by circular target obliterator in black with Copenhagen Footpost datestamp (15/11) in blue alongside. Two minor file folds away from the adhesive but a rare and appealing franking. Signed Friedl. Cert. Paaskesen (1999) Mi 2/IF = € 3'000+/Facit = € 65'000.

*Provenance: Corinthila sale 118 (Oct 1999), lot 6012.*

1v1



**2'500** (€ 2'375)

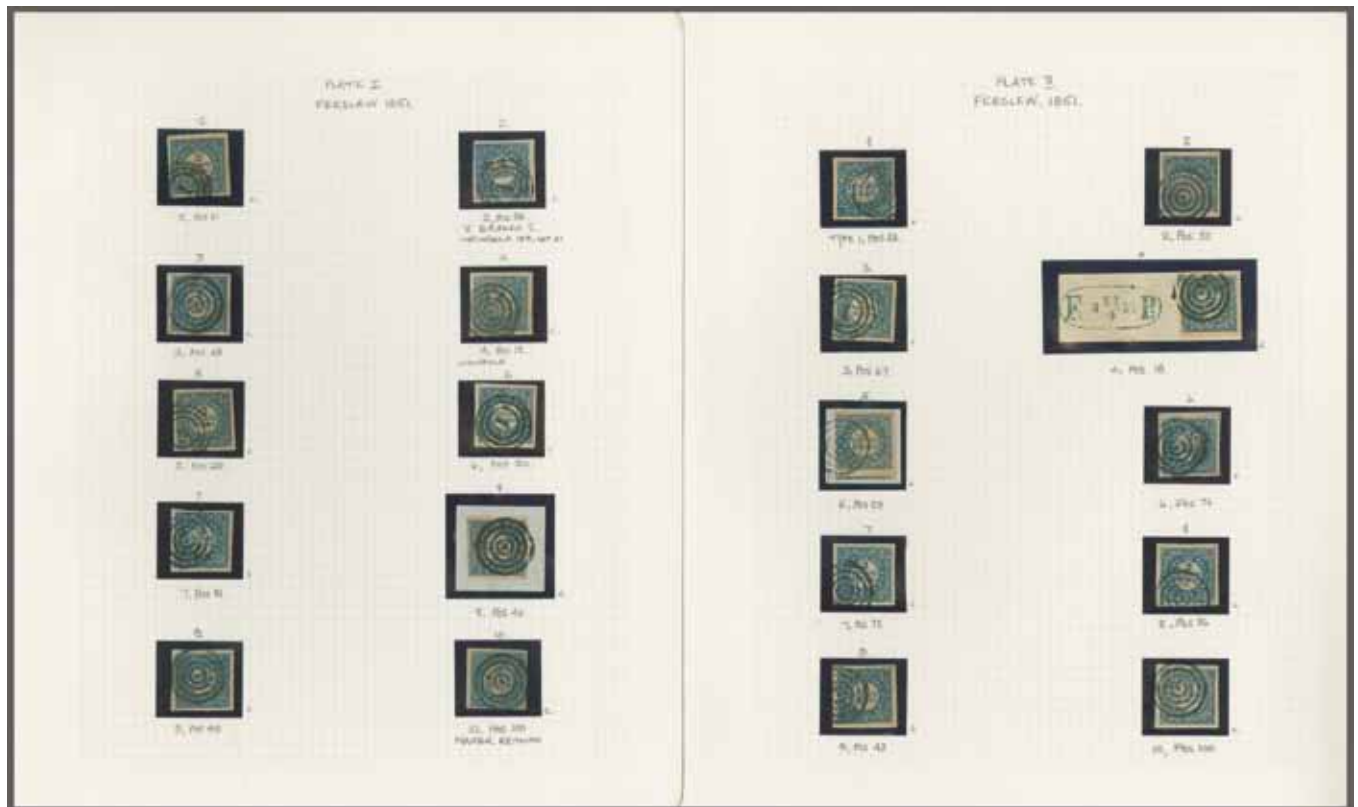
- 3006** 2 rbs. blue, Plate I and Plate II, each with Types 1-10, the superb four margined complete used 'set' of 20 stamps, showing all the ten Types from each of the first two Ferslew Plates, nearly every stamp is very fine to extremely fine or superb with the exception of Plate I, Type 1 which is just touched at lower left. Plate I: Four examples with numeral '1' handstamp of Copenhagen (rare on this plate) and six with the mute concentric ring handstamp, one stamp being on piece. Plate II mostly cancelled by the mute concentric ring handstamp with two examples on piece. A splendid and extraordinarily rare offering, all 20 stamps are with genuine certificates giving the sheet positions Afa 2a/I + 2a/II, Yvert = € 66'000/Scott 1a = \$ 48'000/Michel 2/I = € 44'000/Facit = 220'000 skr.

(Photo = 10)

1/I



**5'000** (€ 4'750)



ex 3006



ex 3013





3007



3008



3009

## 2 Rigsbank Skilling: Second Printing (Thiele) August 1852

- 3007** 2 rbs. blue, Plate I, Type 6, position 20 on the sheet, one of the four 'Substituted (or reserve) Clichés', with a Type 6 stamp used in place of a Type 4, with blue stroke under second L of SKILLING due to a nail head, a fine used example with ample to huge margins on three sides, cancelled by '1' numeral handstamp of Copenhagen handstamp in black. Cert. L. Nielsen (1999) Mi 2/II = € 1'100+/Facit = 13'000+ skr.  
*Provenance: Collection Gene Scott (Oct 1999), lot 77.*
- 3008** 2 rbs. blue, Plate II, Type 10 position 46, a superb used example tied to small 1852 piece by Copenhagen '1' numeral in black with complete Footpost datestamp in blue alongside (29/11) with manuscript '9' at left. Scarce and very fine. Cert. L. Nielsen (2004) Mi 2/II = € 1'100/Facit = 11'000 skr.
- 3009** 2 rbs. blue, Plate I, Type 10, position 100 on the sheet, the Major Retouch with FRI of FRIMAERKE deformed, a fine used example with ample margins on two sides and huge on the other two sides, cancelled by '1' numeral handstamp of Copenhagen handstamp in black. Cert. L. Nielsen (2003) Mi 2/II = € 1'100+/Facit = 13'000+ skr.

Facit	Start price in CHF	Start price approx. €
1/IIv5	<b>350</b>	(€ 335)
1/II	<b>300</b>	(€ 285)
1/IIv4	<b>300</b>	(€ 285)



3010



3011

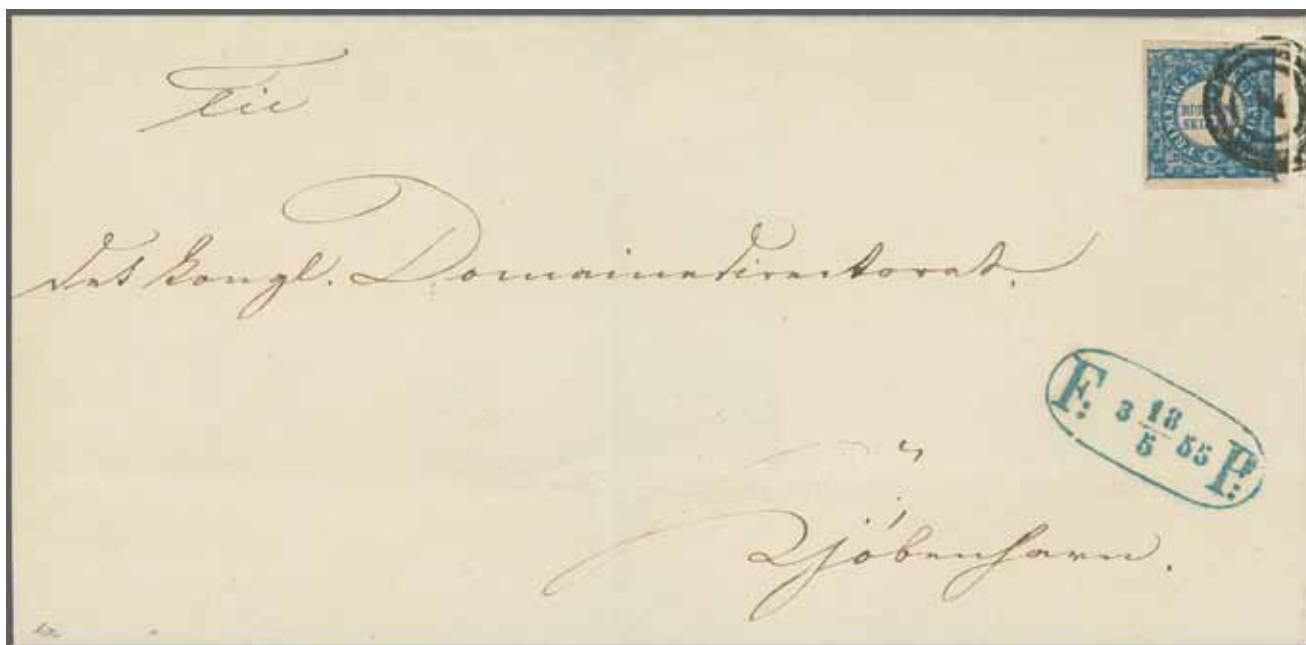


3012

- 3010** 2 rbs. blue, Plate I, Type 9, position 93 on the sheet, a Major Retouch with RKE of FRIMAERKE deformed, a fine used example with large even margins all round, contemporary pre-printing paperfold at base, cancelled by '1' numeral handstamp of Copenhagen handstamp in black. Cert. C. A. Møller (2004), L. Nielsen (2006) Mi 2/II = € 1'100+/Facit = 13'000+ skr.
- 3011** 2 rbs. blue, Plate I, Type 6, position 80 on the sheet, a Major Retouch with G of KGL joined to outer circular frame, a fine used example with large even margins all round, tiny crack in top margin, cancelled by '1' numeral handstamp of Copenhagen handstamp in black. Cert. S. Kaiser (1980) Mi 2/II = € 1'100+/Facit = 13'000+ skr.
- 3012** 2 rbs. blue, Plate II, Types 3-4, positions 15-16, a fine used horizontal pair with large margins all round, left hand stamp showing 'spur' from the lower left corner and the pair showing vertical guide line between the stamps, neatly cancelled by two strikes of Copenhagen '1' numeral obliterator. Cert. Helge Witt (1974) Mi 2/II = € 3'000/Facit = 25'000 skr.
- 3013** 2 rbs. blue, Plate I and Plate II, each with Types 1-10, the superb four margined complete used 'set' of 20 stamps, showing all the ten Types from each of the first two Thiele Plates, nearly every stamp is very fine to extremely fine or superb. Plate I: All examples with numeral '1' handstamp of Copenhagen two examples on piece including one with Footpost cancel; Plate II similarly cancelled with one example on piece and Type 8 unplated. A splendid and extraordinarily rare offering, 19 stamps are with genuine certificates giving the sheet positions Afa 2b/I + 2b/II, Yvert = € 33'000/Scott 1 = \$ 20'000/Michel 2/II = € 22'000/Facit = 220'000 skr.

1/IIv4	<b>300</b>	(€ 285)
1/IIv4	<b>150</b>	(€ 145)
1/II	<b>750</b>	(€ 715)
1/II	<b>5'000</b>	(€ 4'750)

(Photo = 10)



3014

- |             |   |       |   |                       |                          |
|-------------|---|-------|---|-----------------------|--------------------------|
|             |   | Facit |   | Start price<br>in CHF | Start price<br>approx. € |
| <b>3014</b> | 2 rbs. blue, Plate I, Type 10, position 48; a fine large margined example used on 1855 local cover tied by Copenhagen numeral '1' in black with Footpost datestamp (18/5) in blue below. Minor file fold well away from the adhesive, a charming and scarce cover. Cert. G. L. Nielsen (1972) and Eichele (2004) Mi 2/II = € 2'000/Facit = 18'000 skr.<br><i>Provenance: Collection Christian Andersen.</i> | 1/II  | ✉ | <b>600</b>            | (€ 570)                  |



3015

- |             |   |        |   |            |         |
|-------------|---|--------|---|------------|---------|
| <b>3015</b> | 2 rbs. blue, Plate II, Type 2 position 10, a large margined example on 1855 cover tied by '1' numeral with framed Footpost datestamp alongside (6/6) struck in blue. Some minor wear to the letter-sheet on reverse but an exceptional stamp - with centre of Crown retouched and the foot of '2' disjoined. Rare. Certs. G. L. Nielsen (1971), C. A. Møller (1993) Mi 2/II = € 2'000/Facit = 21'000 skr. | 1/IIv1 | ✉ | <b>500</b> | (€ 475) |
|-------------|---|--------|---|------------|---------|



3016



3017



3019



3018

#### 4 Rigsbank Skilling: First Printing (Ferslew) 1 April 1851

- 3016** 4 rbs. deep brown, Plate II, the magnificent mint example in a rich chocolate brown shade, with good to large margins all round, full unmounted original gum. Excessively rare and 'flawless'. Cert. C. A. Møller (2005) Mi 1/I = € 800+/Facit = 10'000 skr.
- 3017** 4 rbs. chocolate brown, Plate I position 73, a fine four margin example used on small piece cancelled by manuscript pen cross with SVENDBORG straight line handstamp at left and manuscript '14/4' (1851) alongside. A marvellous and rare usage. Cert. L. Nielsen (1989).
- 3018** 4 rbs. chocolate brown, Plate II positions 5/15/25/35, vertical strip of four on piece, top stamp - position 5 - being the 'Kranhold Retouch' with open bell to Posthorn at upper right corner and small O in POST, both flaws being easily visible on this remarkable strip; neatly cancelled by concentric ring mute handstamps in black. Rare and splendid item. Certs. L. Nielsen (2004), C. A. Møller (2005).
- 3019** 4 rbs. chocolate brown, a magnificent horizontal used strip of four, 'Ferslew 1a', Plate II, positions 67-68-69-70, with unretouched Crowns, all tied to small piece by three complete strikes of the concentric ring mute handstamp in black. A delightful and rare multiple, being the largest recorded with the unretouched Crown and the finest of the two recorded multiples of this size. Extremely rare. Certs. C. A. Møller (2007), L. Nielsen (2008) Mi 1/I = € 300+/Facit = 16'000+ skr.
- 3020** 4 rbs. chocolate brown, Plate I and Plate II: The exceptional used study (148 stamps) of Plating, Retouches, Cancellations on single stamps and multiples, with 90 stamps from an attempted re-plating, the Pemberton Retouch (ex collection Gene Scott), the Kranhold Retouch, fine vertical (pos. 52/62) and horizontal (pos 88-89) pairs, numeral cancellations 1, 6, 7, 14, 16, 19, 27, 36, 42, 55, 57, 88, 90, manuscript usages, blue cancellation (ex Christian Andersen collection), Plate II position 86 with inverted watermark variety, the whole with 25 certificates or guarantees and in generally 'luxus' quality Facit = 100'000+ skr/Mi 1/I = € 10'000+.

(Photo = www)

Facit		Start price in CHF	Start price approx. €
2/I	**	<b>600</b>	(€ 570)
2/Iv7	△	<b>300</b>	(€ 285)
2/Iv4	△	<b>1'000</b>	(€ 950)
2/I	△	<b>750</b>	(€ 715)
2/I	△	<b>2'500</b>	(€ 2'375)

View of Flensburg, 1850



3021

Facit

Start price  
in CHFStart price  
approx. €

**3021** 4 rbs. chocolate brown, Plate II position 5 (after retouch, with 'Open Posthorn in upper right corner, the 'Kranhold Retouch'), a fine large margined example used on 1851 cover to Aarhus tied by concentric ring mute handstamp with FLENSBURG datestamp at left (9/12) in black. Part of flap missing to envelope otherwise a fine and an extremely rare usage on letter. Cert. Dr. Debo (1987).

*Provenance: Collection Christian Andersen (Oct 1989), lot 2520.*

2/Iv4

**750**

(€ 715)



3022

**3022** 4 rbs. chocolate brown, Plate I position 52, a fine margined example used on 1851 cover to Copenhagen tied by concentric ring mute handstamp in black with bold ROESKILDE datestamp of despatch (10/6) at left. A beautiful cover. Cert. C. A. Møller (1994) Facit = 11'000 skr.

2/I

**500**

(€ 475)





3023

Facit

Start price  
in CHFStart price  
approx. €

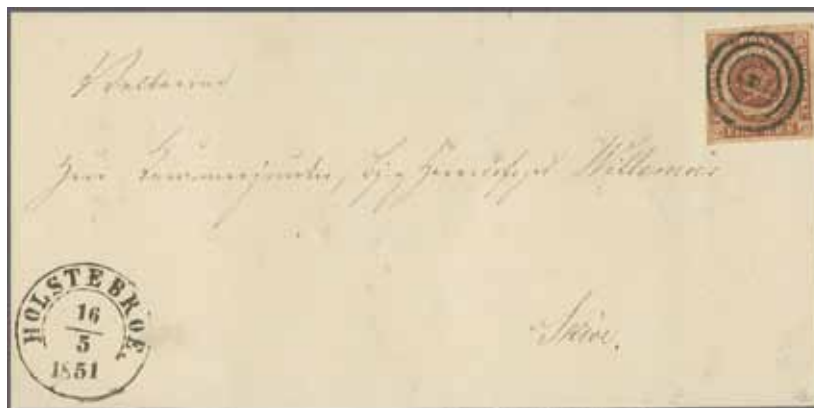
- 3023** 4 rbs. chocolate brown, Plate 1 position 65 on sheet with un-retouched Crown, a superb large margined example tied by concentric ring mute handstamp in black to 1851 cover to Copenhagen, with VORDINGBORG datestamp (24/4) at left in black. Part of reverse of cover missing but a rare cover, used in the first month of issue. Cert. C. A. Møller (2002)

Facit = 15'000 skr.

2/1

**500**

(€ 475)



3024

- 3024** 4 rbs. chocolate brown, Plate II pos. 7 with un-retouched Crown, a fine large margined example used on 1851 refolded cover to Skive, cancelled by concentric ring mute handstamp in black, with superb HOLSTEBROE cds at left (16/5) in black. A lovely cover. Cert. Schonning (2004), Møller (2005) Mi 1/1.

2/1

**400**

(€ 380)



3025

- 3025** 4 rbs. chocolate brown, Plate II position 64, a fine large margined example on 1852 entire letter to Holstebro tied by numeral '55' with corresponding RIBE datestamp (24/12) at lower left. Light file fold away from adhesive, a very scarce usage of the numeral handstamp on this issue and certificate states 'probably unique'. Cert. C. A. Møller (2010).

2/1

**350**

(€ 335)



3026




3027



3028

#### 4 Rigsbank Skilling: Second Printing (Thiele I) April 1852

		Facit	Start price in CHF	Start price approx. €
3026	4 rbs. reddish brown, 1st printing, Plate II position 88, used example with huge margins all round clearly showing variety: <i>Inverted Watermark</i> , lightly cancelled by large part Roeskilde '58' numeral cancel in black. An extremely rare stamp in outstanding quality, small natural paper inclusion of no significance. The certificate states 'to my knowledge the only flawless Thiele I stamp with inverted watermark'. Cert. C. A. Møller (2005) Facit = 15'000 skr. <i>Provenance: Corinthila sale 169 (Sept 2011), lot 1800.</i>	2/IIv6	500	(€ 475)
3027	4 rbs. deep red-brown, Plate I position 60, a fine used example cancelled by large part VIBORG circular datestamp (20.1.1853) in black. Extremely rare usage contrary to regulations. Certs. C. A. Møller (1997), V. Jensen (1997).	2/II	200	(€ 190)
3028	4 rbs. reddish brown, 1st printing, Plate II position 5, used example with large margins all round showing the 'Kranhold Retouch', with O in POST smaller and open bell to Posthorn in NE square, cancelled by concentric ring mute handstamp leaving the retouched areas clear. Rare thus. Cert. Paaskesen (1985) Facit = 3'000 skr.	2/IIv4	150	(€ 145)
3029	4 rbs. chocolate brown, first Thiele printing, 51 used examples from Plates I and II, including Kranhold Retouch cancelled by '34' numeral, two stamps cancelled in manuscript (certs.), single examples with numeral 5, 7, 8, 12, 14, 17, 25, 56, 62, 65, 66, 67, 68, 71, 78, 80, 83, 84, 88, 90, 101, 112, 131, 156, as well as multiples including four pairs, two strips of three and a strip of four. Majority fresh and fine, a good lot Facit = 23'000+ skr/Mi 1/II = € 2'500+. (Photo =  www)	2/II	400	(€ 380)



3030



3031

3030	4 rbs. deep brown, 2nd printing, a fine large margined example in a rich shade used on 1853 entire letter to Lübeck, well tied by numeral '156' with corresponding framed L.P. / No.2 handstamp of the Hanerau-Itzehoe Rural Post Route at left. ITZEHOE datestamp (23/10) below and charged '1/2' silver groschen due on receipt in red crayon. Reverse with KDOPA half-round datestamp in blue. A delightful and rare entire.	2/II	⊠	400	(€ 380)
3031	4 rbs. deep brown, 1st printing, a huge margined example (adjoining stamps on two sides), used on 1852 entire letter to Saxkjobing, cancelled by '43' numeral with NAKSKOV datestamp (19/12) alongside. A fresh and fine entire. Cert. L. Nielsen (2008).	2/II	⊠	150	(€ 145)





3038

#### 4 Rigsbank Skilling: Fourth Printing (Thiele III) 1854

		Facit		Start price in CHF	Start price approx. €
3038	4 rbs. greyish brown, Plate IV position 62, a fine large margined mint example with excellent colour, unmounted original gum. Rare. Cert. C. A. Møller (2004) Mi 1/IIb = € 1'000+/Facit = 9'500+ skr.	2/IVc	**	400	(€ 380)
3039	The remarkable and complete used plating of all 100 subjects on the sheet, all or nearly all stamps being fair to very fine, much incidental cancellation interest as nearly all stamps on this issue have circular numeral handstamps. A labour of love from the collector and a splendid and extremely rare plating. Afa 1/III, Plate III./Mi 1b = € 5'500/Facit = 55'000 skr. (Photo =  www)	2/IV		1'250	(€ 1'190)

#### 4 Rigsbank Skilling: Ferslew & Thiele Printing



3040



3041



3040	4 rbs. chocolate brown and deep red brown, matched pair from Plate II, position 5, the 'Kranhold' Retouch, from both Ferslew and Thiele printings, each stamp with large margins all round and neatly cancelled by concentric ring mute handstamp or numeral '1' in black. Certs.L. Nielsen (2003) Facit = 6'500 skr.	2/IV4+ 2/IIv4		200	(€ 190)
3041	4 rbs. chocolate brown and deep red brown, matched pair from Plate II, position 5, the 'Kranhold' Retouch, from both Ferslew and Thiele printings, each stamp with large margins all round and neatly cancelled by concentric ring mute handstamp or numeral '131' (Preetz) in black. Certs C. A. Møller (1991/92) Facit = 6'500 skr.	2/IV4+ 2/IIv4		200	(€ 190)

#### 1854 - 1863 Skilling Issue



3042

3042	2 sk. dark blue, Plate II, position 61, with variety 'comma between 2 and S', a fine mint example with full sheet margin at left, fine unmounted og. Margin with gum crease but an exceptional stamp. Cert. C. A. Møller Mi3 = € 90+/Facit = unpriced.	3v3	**	150	(€ 145)
------	--	-----	----	-----	---------





3043

- 3043** 2 sk. blue, the magnificent mint corner marginal block of nine from upper left of sheet, positions 1-3/11-13/21-23, with large margins on all sides and of exquisite colour, diagonal corner crease in margin only, a wonderful and rare multiple with full original gum Mi 3 = € 1'200+/Facit = 7000 skr (for two blocks of four).

*Provenance: Collection Christian Andersen (Oct 1988), lot 2076.*

Facit

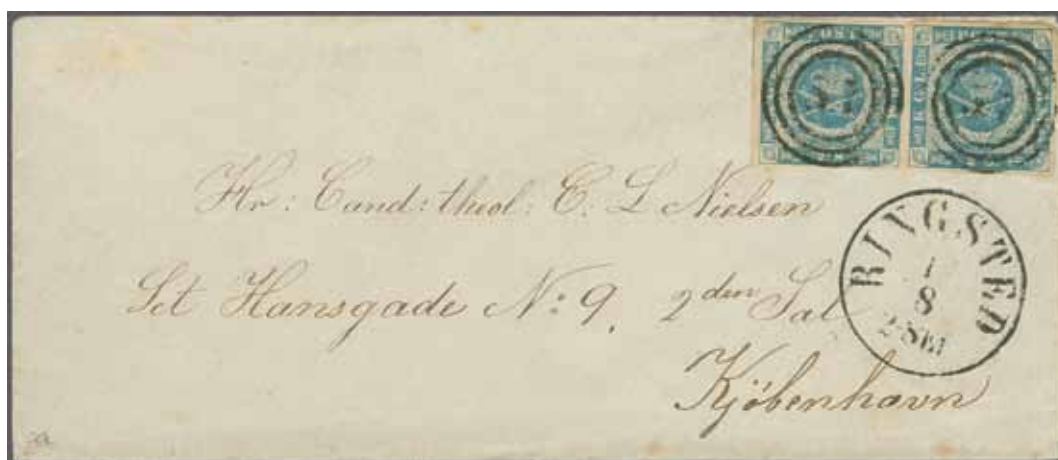
Start price  
in CHFStart price  
approx. €

3

\*\*

**300**

(€ 285)



3044

- 3044** 2 sk. light blue, fine horizontal pair with good margins all round and part of adjoining stamp at left, used on cover to Copenhagen tied by two strikes of numeral '57' with corresponding RINGSTED datestamp of despatch (17/8) below in black. Copenhagen cds of receipt on reverse in black. Minor aging around margins but a fine and most unusual franking. Certs. C. A. Møller (1992), L. Nielsen (2003) Mi 3.

3a

**300**

(€ 285)

- 3045** 2 sk. blue, the range of 18 used examples and a cover, with cancellation interest incl. a vertical pair with '34' numeral, numeral '7', '53', '182' on fine single examples, 'KLH' in circle (Kallehave), manuscript usages (2) and further example with part 'Aus Denmark' in red. A scarce and generally very fine group (with 8 opinions/certificates) Mi 3 = € 1'000+/Facit = 12'000+ skr.

(Photo = www)

3

**250**

(€ 240)



3046



3047



3048



3049

- 3046** 4 sk. brown, a mint vertical pair corner marginal from lower right of sheet, Plate III positions 90/100 from the 1859 printing, large margins all round and portion of adjoining stamp at top, of excellent freshness and colour, full unmounted og. Rare and most attractive multiple. Certs. L. Nielsen (1985 and 2004) Mi 4 = € 700+/Facit = 8'000+ skr.
- 3047** 4 sk orange-brown, 1st printing, a wonderful used example cancelled contrary to regulations by HOLSTEBROE datestamp (13.9.1855) in black. Minor bends but extremely scarce and most attractive.
- 3048** 4 sk. yellowish brown, 3rd printing, a superb used example with full sheet margin at top, neatly cancelled by '40' numeral of Lögstör in black. Exceptional and most attractive stamp. *Provenance: Corinthila sale 103 (Sept 1998), lot 122.*
- 3049** 4 sk. reddish orange-brown, 1st printing, Plate II, a fine used block of four with ample margins all round on small piece, each stamp cancelled by bold '32' numeral handstamp of KALLUNDBORG. Fresh and fine, a scarce multiple. Cert. C. A. Møller (1998) Mi = € 1'400/Facit = 12'000 skr.

Facit		Start price in CHF	Start price approx. €
4	**	<b>500</b>	(€ 475)
4a		<b>200</b>	(€ 190)
4d		<b>150</b>	(€ 145)
4c	△田	<b>300</b>	(€ 285)



3050

- 3050** 4 sk. yellowish brown, a marvellous horizontal pair in a bright shade with large margins all round, neatly tied to 1855 cover to Sorøe by numeral 65 handstamps with fine SLAGELSE cds (4/8) at left. *Provenance: Corinthila sale 103 (Sept 1998), lot 131.*
- 3051** 4 sk. brown (shades), the remarkable collection of 88 stamps with all printings represented, multiples with marginal pairs (2), pairs (8), strips of three (3, one cancelled in manuscript), strip of five on piece, with much cancellation interest including numerals: 1, 2 (on privately rouletted example on piece), 4, 5, 6, 24, 40, 50, 51, 64, 68, 70, 71, 104, 105, 112, 113, 115, 117, 119, 131, 141, 143, 149, 151, 159, 171, 177 and 184; manuscript usages, marginal pieces and plate flaws etc. A splendid collection with 24 certificates, viewing is recommended (Photo = [www](http://www))

4	✉	<b>150</b>	(€ 145)
4a/4h	△	<b>500</b>	(€ 475)



3052



3053



3054



3055

**3052** 8 sk. yellow-green, a superb mint corner marginal horizontal pair from lower right corner of the sheet, position 99-100, of outstanding colour and full sheet margins, minor diagonal crease at right margin mentioned for accuracy and of no significance, full unmounted og. A lovely item. Cert. C. A. Møller (1994) Mi 5 = € 640+/Facit = 6'000+ skr.

**3053** 8 sk. yellow green, a fine used horizontal strip of three, good to large margins all round, neatly cancelled by three strikes of '47' numeral of NYKJOBING, Falster. Exceptional and most attractive multiple Mi 5 = € 500/Facit 2'400+ skr.  
*Provenance: Collection Christian Andersen (Oct 1988), lot 2085.*

**3054** 8 sk. yellow green, a fine used horizontal strip of four, good to large margins all round, neatly cancelled by three strikes of '70' numeral of SVENDBORG. Exceptional and most attractive multiple. Cert. C. A. Møller (1996) Mi 5 = € 500+/Facit 3'200+ skr.

**3055** 8 sk. green, four margined horizontal pair in a matt yellow-green shade, used on 1859 cover to Frederiksberg tied by two strikes of '25' numeral handstamps with corresponding HIRSCHHOLM datestamp (1/4) at lower left in black. File fold well away from the adhesives. A fine and rare franking Mi 5/Facit = 3'000+ skr.

**3056** 8 sk. green (shades), the used selection of 30 examples including four pairs: cancelled '1', '46', '47' and '181' numerals respectively (one pair with pronounced plate flaw in SE corner), a vertical strip of three, horizontal strip of three cancelled '51' numeral, single with manuscript usage, and two pieces with combination frankings of 4 sk. An exceptionally fine and appealing selection, together with 9 certificates Mi 5 = € 2'250/Facit = 24'000 skr.

Facit

Start price  
in CHFStart price  
approx. €

5

\*\*

**350** (€ 335)

5a

**200** (€ 190)

5a

**200** (€ 190)

5a

**200** (€ 190)

5

**500** (€ 475)

(Photo = www)





3057



3058

**3057** 16 sk. greyish violet, a superb mint example with large margins all round, fresh colour and full unmounted og. Rare so fine. Cert. C. A. Møller (2003) Mi 6 = € 550+/Facit = € 4'500+ skr.

**3058** 16 sk. grey-violet, used horizontal strip of four, large margins all round, slight divot at left in margin and not touching design, of fresh colour, neatly cancelled by '61' numeral handstamps of Ronne. A splendid and rare multiple. Cert. L. Nielsen (2000) Mi 6 = € 1'500 for a strip of three/Facit = 7'200+ skr.

*Provenance: Collection Knud Mohr (March 2000), lot 94.*

Facit

Start price  
in CHFStart price  
approx. €

6c

\*\*

**180**

(€ 170)

6b

**300**

(€ 285)



3059

**3059** 2 sk. blue, 1854 4 sk. dark red-brown (6th printing), 1858 8 sk. green and 1857 16 sk. grey-violet, all used on attractive four colour piece cancelled by '182' numeral duplex and numeral '181' at right. Fresh and fine, a most attractive piece. Cert. Paaskesen (1988).

*Provenance: Corinthila sale 77 (Sept 1988), lot 2580.*

3+ 4h+ 8+ 6

△

**300**

(€ 285)



3060

**3060** 2 sk. blue and 16 sk. grey-lilac used in combination with 1858 4 sk. brown on 1860 cover from Copenhagen to Berlin, the adhesives all with four margins and tied by '1' numeral handstamps in black. Copenhagen cds at left (29/8) and reverse with Berlin arrival cds (31/8). Fresh and very fine three colour 22 skilling franking in excellent quality - 'flawless'. Cert. C. A. Møller (2002) Mi 3+6+7a.

3+ 6+ 7

✉

**400**

(€ 380)



*Royal Circus, Edinburgh*

3061

Facit

Start price  
in CHF      Start price  
approx. €

- 3061** 8 sk. yellow-green, 16 sk. grey-lilac in a horizontal pair and 1858/62 4 sk. brown all used on 1858 double rate cover to Edinburgh, Scotland; the stamps being fresh and fine with 16 sk. pair with vertical scissor cut between the pair in margin only, the 4 sk. just grazed at left, all tied by '282' numeral handsamps in black with SJAELL:POST:SPED:BUREAU datestamp in black below (26/7). 'Hamburg' fleuron of transit at left (27/7) in black and reverse with London cds in red and Edinburgh arrival cds (July 30) where charged ¼ d. due in manuscript. A delightful and rare three colour franking at 44 skilling rate. Cert. Kaiser (1979).

5+ 6+ 7

**500** (€ 475)

ex 3062



ex 3063

- 3062** 8 sk. yellow-green, a fine used pair with fine oval framed ANGE BREF / FR. DANMARK in black, also single examples of the 8 sk. and 16 sk. greyish violet cancelled by the same Ship cancellation but struck in blue. A scarce group. Cert. (for 16 sk) C. A. Møller (1993).

5+ 6

**200** (€ 190)

- 3063** 16 sk. greyish-violet (shades), the superb used selection of 20 stamps, with two singles, two fine pairs and a very fine strip of three used in Copenhagen, another cancelled by 'Copenhagen' datestamp, a single cancelled '2' of Hamburg, singles cancelled '30' of Horsens and '43' of Nakskov, and an attractive piece with a four colour franking of 2 sk., 4 sk, 8 sk. and 16 sk. Exceptional group, together with 9 certificates Mi 6 = € 4'400+ / Facit = 36'000+ skr.

6

**500** (€ 475)

- 3064** 1854/57: Postal History selection with covers (28), mostly single 4 sk. frankings with numeral cancels 2, 4, 5, 14, 15, 16, 17, 26, 29, 34, 42, 44, 53, 63, 64, 67, 72, 116, 117, 121, 156, 161, 185, 186, 199 (on superb pair) noted; three covers with 8 sk. yellow green (numerals 1, 47 and 51) with certs., also a splendid combination cover with 2 sk. blue, 8 s. yellow green and 1864/70 4 sk. red and 16 sk. greenish grey used to London (cert). Condition varies but an interesting and attractive collection.

(Photo = www)

3+ 4+ 5

**1'000** (€ 950)



3065



3066



3067



3068

### 1858 - 1862 Imperforate (Wavy lined Spandrels)

- 3065** 4 sk. brown, fresh mint example from the 4th printing, large margins all round and of exceptional colour, full unmounted og. Cert. C. A. Møller (2002) Mi 7a = € 100+/Facit = 1'000+ skr.
- 3066** 4 sk. brown, a delightful used example with good margins all round neatly cancelled by large part BERGEDORF (24/9) datestamp in black. A gem. Signed Thier. Cert. C. A. Møller (1994).
- 3067** 4 sk. brown, a fine used example, tiny scissor cut outside frame at top, with variety 'Inverted Watermark', neatly cancelled by numeral 11 of Cappeln. Scarce stamp. Cert. L. Nielsen (2012) Facit = 4'500 skr.
- 3068** 4 sk. orange-brown, 1st printing, a fine used horizontal strip of three cancelled by excellent strikes of 98 numeral of Fjertislev. An outstandingly attractive strip. Cert. Paaskesen (1998).  
*Provenance: Corinthila sale 103 (Sept 1998), lot 189.*

Facit

Start price  
in CHFStart price  
approx. €

7g

\*\*

**150**

(€ 145)

7

**250**

(€ 240)

7v4

**150**

(€ 145)

7

**150**

(€ 145)



3069

- 3069** 4 sk. brown in a very clear impressions, probably 4th printing, the superb used horizontal strip of six, ample to large margins all round, portions of adjoining stamps at base, each stamp neatly cancelled by numeral 26 of Hjorring in black. Exceptional and most attractive multiple. Cert. Paaskesen (1998).  
*Provenance: Corinthila sale 103 (Sept 1998), lot 195.*

7g

**500**

(€ 475)



3070

- 3070** 4 sk. coffee brown, Plate III positions 87-88-89-90/97-98-99-100, a magnificent block of eight with close to huge margins all round and portion of adjoining stamps at left, neatly cancelled in black. A splendid and rare multiple. Cert. Dr. Debo (1988) Facit = 9'000+ skr.  
*Provenance: Christian Andersen (Oct 1989), lot 2585.*

7

田

**400**

(€ 380)



ex 3071

**3071** 4 sk. brown, used examples (6), with single examples cancelled by circular MERN. handstamp, another with fine HELS. handstamp, another with FAXE handstamp (cert.) and an attractive strip of three with ESRON handstamps.

**3072** 4 sk brown (shades), the specialised collection of choice used examples (105), with one or two multiples, numeral cancellations of nos. 3, 7, 10, 16, 19, 20, 23, 25, 26, 29, 38, 43, 47, 50, 60, 62, 66, 67, 71, 80, 82, 83, 84, 87, 89, 93, 95, 101, 111, 113, 118 (2 in blue, one on piece and a third in black), 120, 121 (in blue), 122 (two, both in blue), 123, 127, 156, 166, 170, 181, 182, 186, 192, 196, 204, 205, 207, 208; barred obliterator of Bergedorf (signed Bloch), strip of three on piece cancelled in manuscript (cert. Nielsen), single with mute cancel applied in Hadersleben (opinion Møller), single with framed PER DAMPSCHIFF (opinion Møller), marginal example used in Nakskov (cert.), usages with circular datestamps (4) etc. An exquisite lot.

(Photo = www)

Facit

Start price  
in CHFStart price  
approx. €

7

**200**

(€ 190)

7

△

**500**

(€ 475)



3073

**3073** 4 sk. red-brown, a fine example with ample to large margins all round, used on 1860 cover to Varde tied by '205' numeral handstamp in blue, with corresponding FANO datestamp at lower left (5/4) in blue. Exceptional and rare thus. Cert. L. Nielsen (2000).

7

✉

**200**

(€ 190)



3074

**3074** 4 sk. red-brown, bright shade, a fine vertical pair, privately rouletted 9½, used on 1862 cover to Nortorf tied by bold strikes of '127' numeral handstamps, with corresponding OLDENBURG cds (12/5) below in black. Nortorf arrival cds on reverse and some interesting comments from previous owner. Rare and very fine quality. Cert. L. Nielsen (2004) Facit = 6'000+ skr.

7v7

✉

**300**

(€ 285)





3075

		Facit		Start price in CHF	Start price approx. €
<b>3075</b>	8 sk. green, mint example with large margins all round, with portions of adjoining stamps at both left and at right, in a fine bright shade, superb og. A wonderful example of a scarce stamp. Cert. L. Nielsen (1980) Mi 8 = € 800/Facit = 7'000 skr.	8	*	<b>400</b>	(€ 380)
<b>3076</b>	8 sk. green (shades), the splendid cancellation study with 18 examples showing manuscript usage (cert.), three examples cancelled by circular datestamps, another with oval Swedish Ship handstamp ANGB. BREF FRAN DANMARK (cert.), numeral cancels with an example in blue, small piece with single and 1864/70 4 sk. (cert.), together with a horizontal pair and a vertical strip of three (cert.). An attractive and scarce collection Facit = 25'000 skr. (Photo =  www)	8	△	<b>400</b>	(€ 380)

### 1863 Rouletted



3077

<b>3077</b>	Rouletted 4 sk. brown, horizontal strip of four, all cancelled by numeral 19 of Frederikshavn. Scarce multiple. Cert. C. A. Møller (2000).	9		<b>150</b>	(€ 145)
-------------	--	---	--	------------	---------



3078

<b>3078</b>	Rouletted 4 sk. brown, Plate VIII positions 6-7/16-17, block of four used on small piece cancelled by numeral 19 of Frederikshavn. Rare. Cert. C. A. Møller (1987) Mi 9 = € 600/Facit = 6'000 skr.	9	田	<b>200</b>	(€ 190)
<b>3079</b>	Rouletted 4 sk. brown (shades), used on covers (2), one cancelled by circular ESROM ring handstamp superbly struck in black, the other cover (ex Gene Scott), cancelled by MERN circular ring handstamp. A fine and scarce pair of covers. (Photo =  www)	9	⊠	<b>200</b>	(€ 190)





3080

- 3080** Rouletted 16 sk. red-lilac, mint example, variety Imperforate, superb large margins all round and with sheet margin at left, fresh and very fine in a rich shade, unmounted og. Cert. S. Kaiser (1984) Mi 10U = € 1'000+/Facit = 7'000+ skr.

Facit

Start price  
in CHFStart price  
approx. €

10v4

\*\*

**300**

(€ 285)



3081



3082



3083

- 3081** Rouletted 16 sk. lilac, a fine used example cancelled by oval ANGB. BREF / FR. DANMARK oval framed handstamp in black. A superb combination of rare stamp and rare cancellation Mi 10 = € 650/Facit = 7'000 skr.

10

**200**

(€ 190)

- 3082** Rouletted 16 sk. lilac, a fine used example, position 31 with 'indentation to outer frame above L of KGL', neatly tied to small piece by numeral 1 of Copenhagen, leaving the plate flaw clear. Rare and appealing stamp. Cert. Paaskesen (1985) Facit = 8'000 skr.  
*Provenance: Collection Gene Scott (Oct 1999), lot 137.*

10v1

△

**200**

(€ 190)

- 3083** Rouletted 16 sk. lilac, a wonderful used horizontal pair of good colour, cancelled by numeral '34' handstamps in black of Copenhagen. A rare multiple and cancellation on this stamp. Cert. Gronlund (1962) Facit = 14'000 skr.

10

**350**

(€ 335)



3084

- 3084** Rouletted 16 sk. lilac, a fine used horizontal strip of four, slightest of ironed horizontal bend from former position on cover, all cancelled by numeral 1 of Copenhagen. A splendid and very rare multiple (only one used block of four is known). Cert. S. Kaiser (1982) Mi = € 3'500/  
Facit = 28'000+.  
*Provenance: Postiljonen sale (Sept 1982), lot 683.*

10

**1'000**

(€ 950)



3085

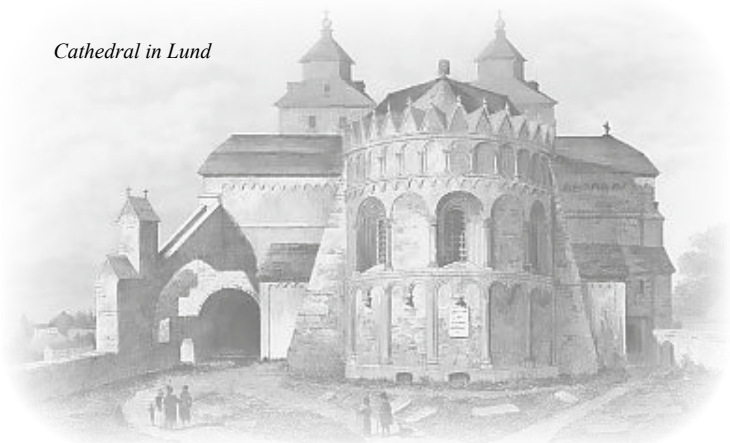
- 3085** Rouletted 16 sk. lilac, two used examples, one in the normal lilac shade, the other in a deep reddish lilac shade (position 27 on the sheet), each cancelled by numeral '1' handstamps of Copenhagen. Cert. C. A. Møller for the latter (1986) Facit = 14'000 skr.

10

**350**

(€ 335)

Cathedral in Lund



3086

		Facit		Start price in CHF	Start price approx. €
3086	Rouletted 16 sk. lilac-rose, a fine example of good rich colour used on 1864 cover to Lund near Malmo, tied by Copenhagen numeral '1' handstamp in black. Copenhagen despatch cds (14/6) at left and Malmo cds (15/6) alongside. A fine and scarce usage. Cert. L. Nielsen (1994) and C. A. Møller (1995) Mi 10 = € 5'000/Facit = 40'000 skr.	10	✉	600	(€ 570)
3087	Rouletted 4 sk. brown (35 examples) and 16 sk. lilac (5 examples), the cancellation study with 4 sk. showing mute circular handstamp, numerals 1, 5, 28, 51, 60, 62, 93, 116, 149, 170, 171 (in blue), 210, 212, 217, 220, 225, also three examples with circular datestamps (incl. complete 'Roskilde' on piece) and four with 'Esron' types and a vertical pair with manuscript cancels (cert.), 16 sk. lilac with numeral 1 and 2 (cert.), manuscript usage (cert.) and a rare vertical pair cancelled by numeral 1 (cert.). Generally fine to very fine, a rare assembly Facit = 40'000 skr. (Photo = <a href="#">www</a> )	9+ 10		750	(€ 715)
3088	1858/63: 4 sk. brown (shades), the cover collection (34 + 1 piece) with predominantly single frankings with cancellation interest with numerals 2, 6, 15, 23, 27, 46, 53, 65, 83, 86 - Laek with Posthorn, 113, 116, 117, 119, 127, 135, 146, 151, 152, 155, 157 (with Landpost cachet), 159, 161, 168, 179, 189, 207, 210, 211 also rouletted 1863 4 sk. tied 'Esron' and another example on cover with Field Post Office 221. Condition obviously varies but many fine. (Photo = <a href="#">www</a> )	7+ 9	✉	350	(€ 335)



3089

### 1864 - 1870 Large Oval Type

- 3089** 2 sk. blue, a superb mint Imperforate block of four from the 1870 printing, wmk'd, from upper right corner of the sheet, positions 9-10/19-20, of excellent fresh colour on slightly yellowish paper, unmounted og. Just 612 examples exist. A scarce and most attractive multiple. Cert. C. A. Møller (2004) Mi 11U = € 480+/Facit = 4'400+ skr.

Facit		Start price in CHF	Start price approx. €
11ev4	田**	<b>150</b>	(€ 145)



3090



3091



3092

- 3090** 3 sk. lilac, perf. 13 x 12½, a fine mint example, 1st printing, rich shade, superbly centred, unmounted og. A splendid and extremely rare stamp in such quality. Cert C. A. Møller (2004) Mi 12A = € 110+/Facit = 2'500 skr.
- 3091** 3 sk. violet, perf. 13 x 12½, fine mint example marginal from upper right corner of the sheet, 2nd printing of July 1866, position 10 on the sheet with 'colourless dot between sceptre and sword', well centred, superb og. A very scarce stamp so fine. Cert. L. Nielsen (2009) Mi 12A = € 110+/Facit = 1'300 skr.
- 3092** 3 sk. lilac, mint Imperforate pair from the first printing of 1865, with large margins all round, unmounted og. Very scarce with just 196 examples possible. Cert L. Nielsen (206) Mi 12U = € 400+/Facit = 3'000+ skr.

12a	**	<b>150</b>	(€ 145)
12bv4	*	<b>100</b>	(€ 95)
12v5	**	<b>180</b>	(€ 170)



Belaggio ca. 1855



3093

Facit

Start price  
in CHFStart price  
approx. €

- 3093** 3 sk. lilac, perf. 13 x 12½ (three examples) used in combination with 1857 8 sk. green, cut at lower right corner, on 1868 cover to Montreux, Switzerland, all tied by bold '17' numeral handstamps with corresponding FREDERICIA cds at left (26/6) in black. Readdressed twice, once to Belaggio and then to Interlaken, with part of yellow label for this purpose at upper left. Reverse with 14 (!) datestamps of transit. Minor imperfections but rare - the 17 skilling rate to most places in Switzerland was in use from May 1 to August 31, 1868 only.

12+ 5

**750**

(€ 715)



3094



3095

- 3094** 4 sk. carmine, perf. 13 x 12½, fine mint example, 1st printing of May 1864, wmk. small Crown, bright shade, well centred, unmounted og. A very rare stamp in such quality. Certs. C. A. Möller (1993), L. Nielsen (2008) Mi 13Ab = € 220+/Facit = 4'500 skr.
- 3095** 8 sk. yellow-brown, perf. 13½ x 12½, fresh mint example of excellent centering and rich colour, fine unmounted og. Rare thus. Cert. G. L. Nielsen (1975) Mi 14A = € 350+/Facit = 7'000 skr.

13a

\*\*

**150**

(€ 145)

14b

\*\*

**250**

(€ 240)





3096



3097

- 3096** 8 sk. yellow-brown, perf. 13 x 12½, a fine used example on 1869 entire letter apparently forwarded from Copenhagen to Gothenburg without cancellation, tied on arrival in Sweden with fine PKXP Nr.2 datestamp (18/3) in black, with repeated fine strike of same on reverse. An attractive and most unusual cover. Cert. Witschi (1992) Mi 14A = € 350/Facit = 3'000 skr.
- 3097** 8 sk. yellow-brown and 2 sk. blue, perf. 13 x 12½, used on COD cover to Kraagerup via Helsingør, each stamp tied by bold '99.' numeral handstamps with corresponding FREDENSBORG datestamp below (17/4). Manuscript notation at left 'Postforsku 5 Rdl. 25 S.'. Reverse with removed tape stain but a superb and very scarce usage. Cert. C. A. Möller (2002).

Facit

Start price  
in CHFStart price  
approx. €

14b

**200**

(€ 190)

14+ 11

**400**

(€ 380)



View of Interlaken



3098

- 3098** 2 sk. blue (4th printing), 3 sk. lilac (2nd printing) and 8 sk. yellow-brown (1st printing) all used on attractive 1869 small envelope to the Poste Restante at Interlaken, Switzerland tied by '25' numeral handstamps with corresponding HORSHOLM cds below (1/6) in black. Reverse with Kiel / Hamburg TPO datestamps and Interlaken arrival cds (4/6) in black. Note the '2' rappen charge for collection fee in red crayon. A charming and most attractive cover. Cert. C. A. Möller (1999) Mi 11A+12A+14A.

11+ 12+ 14

**750**

(€ 715)



School house and church  
in Russikon



3099

Facit

Start price  
in CHF Start price  
approx. €

- 3099** 2 sk. blue, 3 sk. lilac-rose and 8 sk. yellow-brown all used on 1870 entire letter to Russikon near Zurich, Switzerland tied by '1' numeral handstamps in black with oval and circular Copenhagen despatch datestamps (29 and 30 November) below. Manuscript '2' and 'Wfr.' at lower left and reverse with 'Wamdrup / Flensburg' transit and Zurich cds (2/XII) in black. A fresh and fine entire paying the 13 skilling rate to major cities in Switzerland.

*Provenance: Collection Knud Mohr (March 2000), lot 394.*

11+ 12+ 14



**350** (€ 335)



3100



3101

- 3100** 8 sk. grey brown, Imperforate pair from top of sheet and 16 sk. olive-green, Imperforate, fresh and fine mint, the 8 sk. pair unmounted og., the 16 sk. very fine og. Scarce and fine, only 199 of the 8 sk. exist and just 50 of the 16 sk. Opinion C. A. Møller (2001) and cert. L. Nielsen (1981) respectively Mi 14U+15U = € 1'500/Facit = 13'500 skr.

14v2+ 15v3

\*/\*\*

**400** (€ 380)

- 3101** 2 sk. light greenish-blue, line perf. 12½, a fine used horizontal pair from this scarce printing, neatly cancelled by complete strike of HOLSTEBRO / 233 duplex (¼) in black. A delightful and scarce multiple. Cert C. A. Møller (1999), L. Nielsen (2000) Mi 11B = € 600/Facit = 6'000 skr.

16

**180** (€ 170)



3102



3105

- 3102** 2 sk. blue, line perf. 12½, single example used on cover to Lerchenfeldt tied by KALLUNDBORG cds (21/2) in black. A scarce stamp and franking. Cert. L. Nielsen (2002)  
Facit = 4'500 skr.

Facit

Start price  
in CHFStart price  
approx. €

16

**180**

(€ 170)



3103



3104

- 3103** 3 sk. lilac-rose, line perf. 12½, mint example of excellent centering and vivid delicate colour, 4th printing of 1870, variety 'colourless dot between sceptre and sword', fresh and fine, unmounted og. A superb and rare stamp. Cert. G. L. Nielsen (1970) Mi12B = € 500+/Facit = 9'000 skr.
- 3104** 3 sk. lilac-rose, line perf. 12½, a fine used horizontal pair neatly cancelled by Swedish Railway PKXP nr. 2 datestamp in black (22.11.1870). Exceptional and most attractive pair. Cert. C. A. Møller (1992) Mi 12B = € 1'200/Facit = 12'000 skr.
- 3105** 3 sk. lilac-rose, line perf. 12½, a fine used horizontal pair tied to 1870 Printed Matter entire letter to Halmstad, Sweden by numeral '1' handstamps in black with Copenhagen despatch cds at left (20/11) with reverse showing Railway transit and Helsingborg cds (21/11). A fresh and fine usage of a scarce stamp on letter. Cert. C. A. Møller (1991) Mi 12B = € 1'000/Facit = 10'000 skr.

17v4

\*\*

**300**

(€ 285)

17

**300**

(€ 285)

17

**300**

(€ 285)



3106

- 3106** 8 sk. yellow-brown, line perf. 12½, a superb mint example of excellent centering and colour, corner marginal from upper right of sheet, mounted in margin only, stamp unmounted og. A splendid example of a rare stamp. Cert. L. Nielsen (2009) Mi 14B = € 550+/Facit = 12'000 skr.

18

\*\*

**400**

(€ 380)






3107



3108

		Facit		Start price in CHF	Start price approx. €
3107	16 sk. light olive-green, line perf. 12½, mint example from lower right corner of the sheet, of excellent colour and showing both Crown and part of Posthorn watermark on the stamp, large part og. Rare Mi 15B = € 850/Facit = 8'500 skr. <i>Provenance: Collection Christian Andersen (Oct 1998), lot 2129.</i>	19	*	350	(€ 335)
3108	16 sk. light olive, line perf. 12½, a fine used example centrally cancelled by numeral 1 of Copenhagen. A rare stamp so fine. Cert. S. Kaiser (1982) Mi 15B = € 1'200/Facit = 12'000 skr.	19		250	(€ 240)
3109	Small group of covers (10) with 2 sk. and strip of three 4 sk. red used on 1866 entire letter to Leith, Scotland via London; cover with vertical pair of 3 sk. lilac used to Kiel (cert.), single 4 sk. red frankings with one cancelled '77' numeral in blue, 4 sk. red with four examples on cover from Odense (cert.) with further 24 sk. paid in cash; 8 sk. olive grey single franking (cert.) to Stettin, 2 sk., 3 sk. and 8 sk. on cover to Switzerland, single 16 sk. greenish grey frankings on covers (2) to France or Sweden and pair of 2 sk. pale blue, line perf. 12½ on 1871 cover from Aalborg to Copenhagen (cert.). Generally fair to very fine, a most appealing and valuable selection. <i>(Photo =  www)</i>	11/16	✉	500	(€ 475)

### 1870 - 1905 Bi-coloured Type, Perf. C<sup>1</sup> 14 x 13½



3110

3110	2 sk. greenish grey & dull ultramarine, Third Printing, perf. 14 x 13½, a fine horizontal pair used on 1872 cover to Copenhagen, the pair being positions 89-90 on the sheet and thus the right hand stamp showing 'Inverted Frame' variety clearly, neatly tied by crisp strikes of RINGSTED datestamps (22/10) in black. Reverse with Copenhagen arrival cds. A charming and extremely rare cover. Cert. Kaiser (1984) and C. A. Möller (1985) Afä 16 + 16y/Facit = 18'000 skr for used off cover.	20+ 20v	✉	600	(€ 570)
------	--	---------	---	-----	---------





3111

- 3111** 2 sk. grey & lilac, a fine used pair from 2nd printing, positions 89-90, with right hand stamp showing 'Inverted Frame' variety, neatly cancelled by 229 duplex (18/12) in black. One minor blunted perforation mentioned for accuracy but a remarkable and rare pair. Certs. Dr. Debo (1988), C. A. Møller (1993), L. Nilesen (1993) Facit = 20'000 skr.

Facit

Start price  
in CHFStart price  
approx. €

21bv

**400** (€ 380)

3112



3113

- 3112** 3 sk. lilac & grey, a fine example in a delicate shade, used as single franking on 1872 Printed Matter entire letter to Frederikstad, Norway tied by Copenhagen despatch cds (2/3) in black. A charming and scarce usage in excellent quality. Cert. L. Nielsen (2003) Mi 17/1Aa = € 180+/Facit = 1'700+ skr.

21

**200** (€ 190)

- 3113** 3 sk. lilac & grey, two examples from the 2nd printing used on 1872 cover from Copenhagen to Landskrona, Sweden tied on arrival with fine LANDSKRONA datestamp (3/10) in black. Cert. L. Nielsen (2009) Mi 17/1Aa = € 180+/Facit = 1'600+ skr.

21b

**150** (€ 145)

3114

- 3114** 8 sk. dark brown & dark greenish grey, perf. 14 x 13½, mint block of four from upper left corner of the sheet, of excellent fresh colour, some perf. separation at top margin otherwise fresh and very fine, unmounted og. Cert. C. A. Møller (1992) for original block of eight Mi 19/1a = € 880+/Facit = 10'000 skr.

23d

**350** (€ 335)



3115

- 3115** 2 sk. dull ultramarine & grey, 8th printing with position 77 'Inverted Frame', used on small piece with 4 sk. red & grey (10th printing) and 8 sk. brown & grey (3rd printing, minor aging at base), all tied by two strikes of Copenhagen datestamps (9/5) in black. Scarce and attractive piece. Certs. Jensen & Lundegaard (1969), L. Nielsen (2004) Facit = 8'000 skr for 2 sk. used.

Facit

Start price  
in CHF Start price  
approx. €20hv2+  
22g+ 23c

△

**200** (€ 190)

3116



3117

- 3116** 3 sk. light lilac & grey in a horizontal strip of three with 8 sk. yellowish brown & grey used on 1872 Cover to Helsinki, Finland tied by bold strikes of VSJ. JB. PB / 181 duplexes in black, paying the 14 skilling rate. Reverse with 'Kiel / Hamburg' transit (17/7) and St. Petersburg transit in black. A scarce and appealing usage.

21b+ 23

✉

**400** (€ 380)

- 3117** 16 sk. emerald green & grey horizontal pair from 1st printing (pos. A52-A53) and, on reverse, 3 sk. purple lilac & grey horizontal pair from first printing (pos. B1-B2), used on opened for display registered cover to Copenhagen tied by '17' numeral handstamps and by FREDERICA datestamp (20/9) in black with registered labels at left. Minor aging but an attractive and rare cover. Certs. C. A. Møller (1997), L. Nielsen (2002) Mi 17/1Aa + 20/1a = € 600+/ Facit = 6'000+ skr.

24+ 21a

✉

**500** (€ 475)

- 3118** Bicoloured Issue selection, all perf. 14 x 13½, with 2 sk. in a mint block of ten from corner of sheet, 3 sk. mint (cert.), 4 sk. mint, 8 sk. mint from 1st printing (2 examples, both with certs, both unmounted og.), 16 sk. mint (2, one with cert.), a fine and scarce group Mi 16/20 = € 2'500+/Facit = 25'000+ skr. (Photo = www)

20/24

\*/\*\*

**400** (€ 380)

- 3119** Small correspondence to Landskrona, Sweden with 7 covers bearing bicoloured issue frankings: one 1871 with pair of 3 sk., similar 1873 cover with pair of 3 sk., 1872 cover with 2 sk. and 4 sk. tied by 'Landskrona' cds on arrival (cert.), 1873 cover with single 8 sk., 1872 double rate cover with 4 sk. and 8 sk., and an 1872 registered cover with 3 sk. pair and single 8 sk. Generally very fine quality, four with certs. L. Nielsen (2002/2009). (Photo = www)

20+ 21+

✉

**500** (€ 475)

- 3120** Bicoloured Issue, the Postal History selection with covers (13) with single 2 sk. frankings (3), pair of 2 sk. used on 1872 entire from Bodense; 2 sk. and 3 sk. used with pair of 4 sk. to Solothurn, Switzerland (cert.), 2 sk., 3 sk. and 8 sk. on 1873 cover to Basel (cert.) and a similar franking to Luzern (cert.), 4 sk. single frankings (4) incl. one with 'Inverted Frame' variety (cert.), 8 sk. pair on 1874 cover to France, 8 sk. and pair of 3 sk. on 1872 cover to London (cert.), generally fine, a highly catalogued and appealing group. (Photo = www)

20/23

✉

**500** (€ 475)



3121

**Line Perf. C<sup>2</sup> 12½ x 12½**

- |             |  | Facit |   | Start price<br>in CHF | Start price<br>approx. € |
|-------------|--|-------|---|-----------------------|--------------------------|
| <b>3121</b> | 2 skilling, line perf. 12½ x 12½, 1st printing of 1871, a superb horizontal pair used on small piece, positions A61-A62 on the plate, tied by Railway 181 duplex cancellation. Exceptional and extraordinary multiple of great rarity. Certs. Dr. Debo (1988), C. A. Møller (1989), L. Nielsen (2008) Afa 16A/Mi 16/1B = € 6'400/Facit = 60'000 skr. | 25    | △ | <b>1'500</b>          | (€ 1'425)                |



3122



3123

- |             |  |      |  |            |         |
|-------------|--|------|--|------------|---------|
| <b>3122</b> | 48 sk. lilac & brown, perf. 12½, position 80, a fine used example of good colour and centering for this stamp showing variety: 'Inverted Frame', neatly cancelled by numeral 29 of Holstebro. Rare and attractive stamp. Cert. Gronlund (1973) Facit = 16'000 skr.<br><i>Provenance: Gene Scott (Oct 1999), lot 203.</i> | 27v1 |  | <b>350</b> | (€ 335) |
| <b>3123</b> | 48 sk. lilac & brown, perf. 12½, a superb used horizontal strip of three, all cancelled by excellent strikes of numeral 84 of HERNING. Rare and most appealing multiple. Cert. C. A. Møller (1987), L. Nielsen (2003) Mi 21/1B = € 750+/Facit = 7'500+ skr.  | 27   |  | <b>300</b> | (€ 285) |

**1875 - 1895 Öre Values Perf. C<sup>1</sup> 14 x 13½**

3124

- |             |   |                   |   |            |         |
|-------------|---|-------------------|---|------------|---------|
| <b>3124</b> | Imperforate 4 öre bright blue & grey and imperforate 8 öre aniline red & grey used on registered 4 öre blue postal stationery envelope in combination with 1886 20 öre blue to Hamburg, all tied by Copenhagen cds's (21/1) in black. Framed registration handstamp at left and reverse with Hamburg arrival cds of the following day. Scarce usages of the imperforates on a most attractive cover. Cert. L. Nielsen (1998) Afa 23b+25b+36/Mi 23U+25U (unpriced used).<br><i>Provenance: Chiani sale (Oct 2001), lot 2716.</i> | 29v3+<br>31v1+ 55 | ✉ | <b>250</b> | (€ 240) |
|-------------|---|-------------------|---|------------|---------|



3125



3126

- 3125** 5 öre greyish-blue & carmine-red, perf. 14 x 13½, a mint horizontal pair, positions 61-62 on the sheet, left hand stamp showing 'Inverted Frame' variety and right hand stamp with missing ornaments at lower right, fresh and very fine, superb og. Rare Mi 24/IYA = € 1'200/Facit = 10'000 skr.
- 3126** 5 öre greyish-blue & carmine-red, perf. 14 x 13½, a mint horizontal pair, positions 60-61 on the sheet, right hand stamp showing 'Inverted Frame' variety, fresh and very fine, superb og. Rare Mi 24/IYA = € 1'200/Facit = 10'000 skr.

Facit

Start price  
in CHFStart price  
approx. €

30cv2

\*

**300**

(€ 285)

30cv2

\*

**300**

(€ 285)



3127

- 3127** 5 öre ultramarine & carmine, perf. 14 x 13½, first printing, used on 1879 Printed Matter entire letter to Aalesund, Norway neatly tied by Copenhagen cds (6/12) in black. Fresh and fine, a scarce usage. Cert. L. Nielsen (2006) Mi 24/IYA, Facit = 6'000 skr.

30a

**200**

(€ 190)



3128

- 3128** 50 öre blue-violet & brown, first printing (1b), positions 76-79, a fine used strip of four, each stamp well cancelled by numeral 209 obliterator in black. Fresh and fine, a scarce multiple Facit = 8'000 skr.

36a

**200**

(€ 190)



## 1904/15 Bi-coloured Surcharges



3129

		Facit		Start price in CHF	Start price approx. €
<b>3129</b>	80 øre on 12 ø. red-lilac & grey, a fine used block of four, positions 51-51/61-62, with position 51 showing 'Inverted Frame' variety, superb and rare multiple with light Saeby circular daterstamp leaving the variety clear. Cert. L. Nielsen (2007) Facit = 7'500+ skr.	49+ 49v	田	<b>250</b>	(€ 240)
<b>3130</b>	Surcharged with New Values, the small group of 8 covers/fronts with 4 ø. on 8 ø. (2) on 7 on 5 ø. green stationery envelope, 4 ø. on 8 ø. in a strip of five on registered 1915 cover from Holbaek (cert.), 4 ø. on 8 ø. used with further values on registered cover from Skive to Reunion, 35 ø. on 20 ø. single franking on registered cover to Basel, 35 ø. on 20 ø. pair used on registered cover front, 35 ø. on 20 ø. block of four on registered cover front to Berne, 80 ø. on 12 ø. pair used with 80 ø. on 8 ø. Official pair tied by Vedbaek datestamps to 1916 cover to Paris, generally fine, a scarce selection. (Photo =  www)	46/49	✉(✉)	<b>250</b>	(€ 240)

## Collections

<b>3131</b>	1875/1905: Used collection with bicoloured issue arranged by printing with choice examples from 3 ø. (5), 4 ø. (14), 5 ø. (5, including delightful example used in Hamburg), 8 ø. (19) with fine example on piece with 'Inverted Frame' variety, 12 ø. (14), 16 ø. (8), 20 ø. (9), 25 ø. (5), 50 ø. (10), 100 ø. (9) with many of the rarer printings or varieties with certs., thereafter with 1896/1905 perf. issues, 1882/1902 with small figures sets used (certs.), 1904/06 Christian IX incl. block of four 50 ø. lilac, Frederik VIII set with varieties incl. retouches on 5 ø., 100 ø. with rare 'monogram missing' variety (cert.), 1912 GPO 5 kr. red-brown with 18 examples including two blocks of four, Christian X incl. 15 ø. with retouch, 1915 GPO 5 kr. used (12) including a block of four, surcharged Newspaper stamps set of seven and ten used, and two further volumes of more modern material. A fine lot with much to recommend. (Photo =  www)			<b>1'500</b>	(€ 1'425)
<b>3132</b>	1875/1905: Bicoloured Issue, the Postal History selection with covers/cards (28), incl. 1875 3 ø. pair used on local cover within Copenhagen, 3 ø. pair on Printed Matter entire, 4 ø. single franking on Printed Matter entire (cert.), 20 ø. on registered usage of 8 ø. stationery card from Lemvig, 1890 cover to Hamburg franked by 3 ø. strip of seven (cert.), 1893 four colour franking to Switzerland, 1893 3 ø. strip of four, 4 ø. and 16 ø. used on 4 ø. stationery envelope to Switzerland; Parcel Card with 100 ø. (6) used from Maribo with further values (cert.) etc. A generally fine and very appealing group. (Photo =  www)	28-45	✉	<b>1'500</b>	(€ 1'425)

Images of most of our collections you will find on our webpage: [www.corinphila.ch](http://www.corinphila.ch)

## 1882 and later issues



3133



3134

- 3133** 1882: 5 öre green, small figures, a fine example used on 1882 card from Copenhagen carried by ship and tied solely by Swedish PKXP No. 2 B.UTR.B datestamp in black (11/11). Further strike of datestamp at left and interesting order for Morphine and Opium products on reverse. A rare and most unusual single franking. Cert. L. Nielsen (2006) Mi 32 = € 900/Facit = 8'000 skr.

- 3134** 1882: 5 öre deep green, small figures, a fine horizontal strip of four used on 1883 cover to Switzerland, each stamp cancelled by circular 58 numeral handstamps in black with corresponding ROESKILDE cds (24/5) alongside. Reverse with Ambulant and Montreux arrival cds (27/5) in black. A rare and most unusual franking. Cert. L. Nielsen (1995) Mi 32 = € 900/Facit = 8'000 skr.

Facit		Start price in CHF	Start price approx. €
50	✉	<b>250</b>	(€ 240)
50a	✉	<b>200</b>	(€ 190)



3135



3136

- 3135** 1882: 20 öre blue, small figures, a fine horizontal strip of four used on registered cover to Copenhagen tied by circular numeral 8 handstamps with corresponding BOGENSE datestamp at left (12/10) in black. A scarce multiple of this elusive stamp on letter. Cert. L. Nielsen (2006) Mi 33/Facit = 1'400+ skr.

- 3136** 1895/1905: Bicoloured 100 öre yellow & grey, perf. 12¾, a horizontal strip of four and a strip of six (8th printing of 1901) all used on 1903 registered cover to Frederica in combination with 1895/1902 5 ö. green and 15 ö. lilac pair, perf. 12¾, tied by Copenhagen cds's (18/6) with three Packet registration labels at upper left. The two strips comprise the entire row, being positions 51-54 and 55-60 on the sheet. A fine and most unusual high franking. Certs. C. A. Møller (1998), L. Nielsen (2004).

- 3137** 1884/1902: Small group of covers/cards (6) with 1884 5 ö. green on 3 ö. stationery card, 1889 printing 20 ö. blue (position 74 on sheet) used as single franking to Berlin (cert.), registered cover with 10 ö. red and four 20 ö. blue used to Sweden; 1901 registered cover with single 24 ö. brown franking etc.

(Photo = www)

52	✉	<b>150</b>	(€ 145)
45+ 45aa+ 57+ 59	✉	<b>200</b>	(€ 190)
53-61	✉	<b>250</b>	(€ 240)



3138

- 3138** 1904/06: Christian IX, 100 öre yellow-brown, horizontal mint pair, variety Imperforate, fresh and fine, unmounted og. Rare. Cert. L. Nielsen (2006) Mi 52U = unpriced/Facit = 12'000 skr.

Facit		Start price in CHF	Start price approx. €
68v	**	<b>300</b>	(€ 285)



3139



3140

- 3139** 1912 (Sept 16): Copenhagen GPO 5 kr. brown-red, wmk. Crown, perf.  $12\frac{3}{4}$ , a fine mint block of four, imperceptibly mounted, superb og, one stamp unmounted og. A very rare stamp in a multiple Mi 66 = € 1'200+/Facit = 13'000+.

- 3140** 1912: Post Office 5 kr. brown-red, a superb used block of four with lower left stamp showing position 44 KJOBFNHAVNS variety, cancelled neatly by Copenhagen cds (28.2.1917) in black. Scarce and fine multiple. Cert. S. Kaiser (1982) Mi 66 var = € 480+/Facit = 8'200 skr.

120	田*/**	<b>400</b>	(€ 380)
120+ 120v2	田	<b>200</b>	(€ 190)



3141

- 3141** 1912: Post Office Festival Booklet with Menu and Music Programme inside, 'franked' on front with GPO 5 kr. brown-red neatly cancelled on day of the Concert by two strikes of Copenhagen datestamps (22.9.1912) in black. Some hinge remnants on reverse and minor cover bend but extremely scarce. Cert. S. Kaiser (1981).

120	<b>200</b>	(€ 190)
-----	------------	---------





3142



Aalborg Cathedral

- 3142** 1915: Post Office 5 kr. brown-red, a superb used block of four, marginal from top of sheet, from 1919 4th printing, centrally cancelled by Aalborg cds in black (5.7.1920). Fresh and fine, a scarce multiple. Cert. L. Nielsen (2004) Mi 81 = € 480+/Facit = 5'600+ skr.

Facit

Start price  
in CHFStart price  
approx. €

121

**200**

(€ 190)



3143



3145

- 3143** 1912 (April 1): First Day Cover sent registered to Birmingham franked by set of three 1912 35 öre overprints on 16 ö. brown & grey, 35 ö. on 20 ö. grey & carmine and 35 ö. on 32 ö. yellow-green all tied by Copenhagen datestamps (1.4.1912) in black. Reverse with London and Birmingham arrivals (April 3). Rare Facit = unlisted.

47+ 48+ 122

**300**

(€ 285)

- 3144** 1915: 80 öre on 8 ö. carmine-red, single examples used on Insured or Registered covers (2), one neatly cancelled by RONNE datestamp, the other cover registered from Assens to Dresden showing the adhesive with scarce POSTERIM for POSTFRIM variety (cert. S. Kaiser, 1981). Scarce and fine pair Facit = 8'000+ skr.

(Photo = www)

123+ 123v

**180**

(€ 170)

- 3145** 1915: GPO 5 kr. brown-red used on 1919 registered 'Adressebrev' cover to Naestved in combination with 1913/28 10 ö. red and 1 kr. yellow-brown all tied by Copenhagen cds's (4/6) in black. Violet registration label at upper left and arrival of the same day on reverse. A fine and rare usage. Cert. L. Nielsen (2006) Facit = 4'000+ skr.

121+ 134+

**200**

(€ 190)





3146

Facit

Start price  
in CHF      Start price  
approx. €

- 3146** 1915: GPO 5 kr. brown-red, three examples, used on 1919 registered 'Adressebrev' cover to Aalborg in combination with 1913/28 10 ö. red (3), 1 kr. yellow-brown and 2 kr. grey all tied by Nyborg cds's (12/2) in black. Rated for three packets with requisite registration labels at left. A fine and very scarce franking.

121+ 134+  
165+ 166



**300** (€ 285)



3147



3148

- 3147** 1955: Provisional 30 on 20 öre brown-red Type I, a superb mint example showing variety: 'Double Surcharge' in black, mounted on marginal selvedge only, fresh and fine, unmounted og. A rare stamp with just 100 issued in error Afa 363ay/Facit = 9'000 skr.

385v2

\*\*

**250** (€ 240)

- 3148** 1955: Provisional 30 on 20 öre brown-red Type I, a superb mint example showing variety: 'Inverted and Misplaced Surcharge' in black, fresh and fine, unmounted og. A rare stamp with just 100 issued in error Afa 363bx/Facit = unlisted.

385 var

\*\*

**250** (€ 240)

## Danish Post Office in Hamburg



3149

- 3149** Hamburg 1 1/4 sch. grey, a fine used horizontal pair tied to 1864 cover to Copenhagen by concentric ring '2' numeral of Hamburg and by Hamburg despatch datestamp (8/6) in black. Copenhagen arrival cds on reverse of a fresh and fine cover. Signed Jakubek.  
Provenance: Collection E. Kuphal, Corinthila sale 142 (Jan 2005), lot 53.



*Hamburg 1 1/4 sch. grau, farbfrisches und breitrandiges waagrechtes Paar, jeder Wert sauber entwertet mit dänischem Dreiringstempel '2' übergehend auf Faltbrief mit inhalt sowie übergehend getroffen vom Aufgabe-Nebensteinempel 'Hamburg 8/6 3-4' (1864) nach Kopenhagen mit rückseitigem Ankunfstempel. Signiert Jakubek.*

8c



**200** (€ 190)

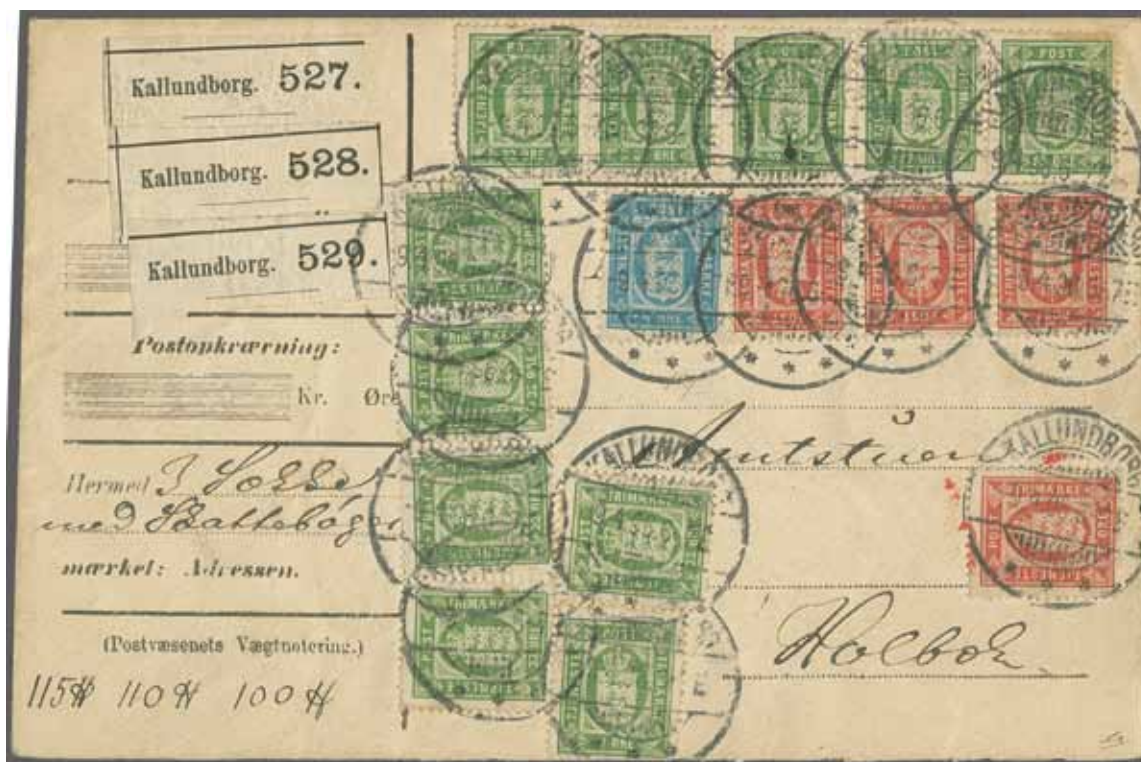
## Officials

- 3150** 1871: Covers (6), with three covers bearing 2 sk. ultramarine, one being a single franking used in Lemvig, the other two covers with pairs of 2 sk used from Frederikssund and Horsens; also three covers with single 4 sk. carmine usages from Aarhus (ex Gene Scott collection), Fredensborg and Nykjobing p. Falst. Fresh and fine, a scarce group Facit = 5'000+ skr. (Photo =  www) TJ1+ TJ2  **200** (€ 190)




3151

- 3151** 1875 (Jan): Official 4 öre. ultramarine, second printing, perf. 14 x 13½, inverted wmk., a fresh mint example with good centering and colour, unmounted og. Cert. L. Nielsen (2011) Facit = 4'000 skr. TJ7a/vm \*\* **150** (€ 145)



3152

- 3152** 1875/1923: 4 öre ultramarine, 8 ö. carmine (4 examples) and 32 ö. green (41 examples!), used on back and front of registered 'Adressebrev' cover to Holbek for three parcels of varying weights; the adhesives all tied by 'Kallundborg' datestamps (9/4) in black. The cover would benefit by being opened for Exhibit display, an extraordinary and very unusual franking. TJ7+ TJ8+ TJ9  **250** (€ 240)



3153



3156

### Postal Ferry Issues

- 3153** 1919: 10 øre red and 15 øre violet, each in mint blocks of nine stamps, each with central stamp showing variety, POSFFAERGE for POSTFAERGE in overprint at top (position 54 on the sheet), fresh and very fine matching multiples with just 490 possible of the 10 ø. and 850 possible for the 15 ø., variety unmounted og Mi 1+2 var/Facit = 14'000+ skr.

Facit	Start price in CHF	Start price approx. €
PF1v+ PF2v    */**	<b>300</b>	(€ 285)



3154



3155

- 3154** 1919: 30 ø. blue 'Postfaerge' and 1926 20 ø. on 40 ø. blue used on 1927 registered cover to USA cancelled in transit by 'Parkston / Harwich' datestamps in black (May 10) with scarce framed HARWICH / SHIP LETTER handstamp in black alongside. Reverse with Harwich, London and New York (18/5) datestamps. Scarce.
- 3155** 1924/30: Waybill from Aggersund to Logstor bearing high franking of 'Postfaerge' 1924 1 kr. blue & brown single and block of four (Type II) and horizontal pair of 1930 10 kr. yellow-green & red all tied by 'Aggersund' Crown & Posthorn circular handstamps in violet. Extremely rare.
- 3156** 1919: 1 kr. yellow-brown in mint block of nine stamps, with central stamp showing variety, POSFFAERGE for POSTFAERGE in overprint at top (position 54 on the sheet), fresh and very fine multiple with just 260 possible, seven stamps incl. the variety unmounted og Mi 4 var/Facit = 28'000+ skr.

PF4+ 176    ☒	<b>150</b>	(€ 145)
PF7b+ PF9    ☒	<b>350</b>	(€ 335)
PF10v    */**	<b>500</b>	(€ 475)





3157



3158

- 3157** 1919: 1 krone yellow-brown, a fine overprinted block of four used on 1919 registered cover from Nordby to Copenhagen accompanying parcel of 22 kgs., tied by two strikes of NORDBY datestamps (26/6) in black. Registered label at left and cover with vertical file fold well away from adhesives, a very scarce and fine usage in second month of issue. Cert. C. A. Møller (1986) Afa 4/Mi 4/Facit = 11'000+ skr.

Facit Start price in CHF Start price approx. €

- 3158** 1919: 10 ø. red, 30 ø. orange horizontal pair and 1 kr. brown in block of four, all used on Parcel Form tied by oval framed NORDBY PAA FANO / KONGELIG POSTFAERGE datestamps (26 Aug 1922) in black. Exceptional and extremely scarce usage.

PF10 ☒ 250 (€ 240)  
PF1+PF3+ PF10 ☒ 350 (€ 335)



3159



3160

- 3159** 1919: 15 ø. violet, 50 ø. grey in a block of four and single 1922 10 ø. green all used on Parcel Card to Aggersund cancelled by Crown & Posthorn LOGSTOR handstamps in violet. Scarce.
- 3160** 1927: 15 ø. red, corner Control block of four used on 1927 registered cover to USA cancelled in transit by 'Parkston / Harwich' datestamps in black (May 10) and by scarce framed HARWICH / SHIP LETTER handstamp in black. Reverse with Harwich, London and New York (18/5) datestamps. Scarce.

PF2+PF6+ PF16 ☒ 200 (€ 190)  
PF23 ☒ 150 (€ 145)



3161

Facit

Start price  
in CHF      Start price  
approx. €

- 3161** 1919: 1 kr. brown & blue, a horizontal strip of six (Type II overprint), single (rare) 10 kr. yellow-green & red, 1930 10 ö. brown, rounded corner perf. and 1922/53 Caravel 40 ö. green pair all used on 1934 Parcel Card (for 4675 tons of Coal) and cancelled by the oval FANO-ESBJERG / FAERGERI ESBJERG datestamp in black (June 2). Couple of minor file folds but a remarkable franking. Cert. C. A. Möller (2001) Mi 10+11+14+15/Facit = 14'000 skr. PF7b+ PF9+ PF17+ PF25

300 (€ 285)



ex 3162

- 3162** 1919/73: The magnificent collection with 1919 10 ö. red mint (5) and used (13), 15 ö. violet mint (15, incl. block with POSFFAERGE error) and used (22), 15 ö. pale grey violet mint (12), and used (25), 50 ö. black & wine-red mint (9 incl. a very rare block of four) and used (7), 1 kr. yellow-brown mint (14, incl. two plate number blocks of four) and used (22), 1922 10 ö. green mint (8) and used (17) and 10 ö. brown (hearts) with rare mint example in the red-brown shade; 30 ö. orange mint (8) and used (12); 50 ö. grey mint (12) and used (19); 1 kr. brown & blue mint (14) and used (22), 30 ö. blue mint (9) and used (4), Caravel sets mint and used with additional multiples and 40 ö. green with 'Coloured spot on Flag' variety mint, 10 kr. green & red mint (12) and used (9); 1936 10 ö. orange mint (8) and used (12), 1949 'Bang' retouches on 40 ö. in mint and used blocks etc. A splendid lot with many multiples and large pieces with much cancellation interest.

PF1/PF48

5'000 (€ 4'750)









3164



3165

## Airmail

- 3164→** 1912: Postcard to Hellerup franked by 5 ö. green tied by HARESKOV datestamp (29.V) carried on Pioneer Flight by Ulrich Birch, with oval cachet FLYVEPOST / No. 1 / ULRICH BIRCH and framed HOJSOMMERFESTER / I HARESKOV 1912 both in violet. A scarce flight Müller #6.
- 3165→** 1914: Postcard franked 5 ö. green, minor aging and slight bend, tied by ROSSKILDE cds (12.5) in black, carried on Ussing's Pioneer return flight back to Copenhagen, with circular BESORGET MED DANMARKS / 1ste FLYVEPOST cachet in violet and BORNEHJAEPLS / DAGEN cachet in red dated May 12. Scarce flight. Cert. Gronlund (1969) Müller # 11a.

Facit

Start price  
in CHFStart price  
approx. €✉ **200** (€ 190)✉ **200** (€ 190)

3166



3167

- 3166→** 1916: 5 ö. green stationery card with 'Danmarks Luftvaern' vignette tied by Copenhagen cds used to Randers. Unusual.
- 3167→** 1919: Cover carried on First Pioneer Flight between Naestved and Storehedinge with 3 ö. grey adhesive on 7 ö. on 5 ö. stationery envelope with various labels including 'Flyvepostmaerke / 50 Öre' black on dull red label, all tied by NÆSTVED datestamps (13/9) and by Storehedinge arrival (13/9). The Pioneer flight was flown by Otto Reichert, with just 111 items of mail carried. Scarce Müller # 15.

✉ **150** (€ 145)✉ **300** (€ 285)



3168



3169

- 3168→** 1925: 15 ö. violet postal stationery card used on Naestved to Copenhagen Pioneer flight with 1925 red & black on orange Flight label tied by both NAESTVED and by KASTRUP arrival (3/9) datestamps. An attractive usage with just 260 items of mail flown Muller # 36.
- 3169→** 1925/29: Set of five values complete, all used on 1929 registered airmail cover to Porto Alegre, Brazil tied by Copenhagen Airmail datestamps (Dec 5) in black. Scarce and fine Facit = 5'500 skr for used set.

Facit	Start price in CHF	Start price approx. €
✉	150	(€ 145)
213/217 ✉	200	(€ 190)



ex 3170



Pilot Robert Svendsen

- 3170→** 1930 (July 17): Special flight commemorating first Oeresund-flight by Robert Svendsen (1910), semi official air vignette 5 Kr. in an unused mint block of four, scarce imperf. vignette marginal of top left of sheetlet together with Air 15 ö. (2) on envelope from "KOBENHAVN 17.7.30" to Malmö as well as perf. usage on picture postcard, both with special cachet "Danske Flyver" and Malmö arrival mark of same day.

✉	300	(€ 285)
---	-----	---------



ex 3171

		Facit		Start price in CHF	Start price approx. €
3171→	1924/29: 1 kr. brown, block of 30 and a strip of four, used on 1939 registered airmail cover to the USA weighing 240 grams (in manuscript), all tied neatly by 'Varde' datestamps in black, with arrivals on reverse. Slight cover tears at top away from the adhesives but an extraordinary cover Facit = 71'400 skr as used stamps.	217	✉	400	(€ 380)
3172→	1928/44: Group of 30 airmail covers and cards including better frankings and usages to foreign destinations as registered envelope to Belgium Congo (1930), Bangkok / Siam (1934) or Swakopmund / SWA, further usages without airpost stamps, first postal overnight service Stockholm - London (1928) as well as first air connection Copenhagen to Prague (29.VIII.28). Fine. (Photo =  www)		✉	300	(€ 285)
3173→	1925/76: Fine assembly of 80 airmail covers/cards, including first and special flights as 1925 (Sep.3) first Flight Naestved - Copenhagen with two stationeries and one envelope bearing semi official labels, postal overnight service Stockholm - London (1928), card franked with 1930 semi official label commemorating Robert Svendsen Oeresund flight (1910) together with an unused miniature sheet of four, 1930 (16. May) first overnight service Copenhagen - Stockholm, airmail covers franked only with definitives without airpost stamps, Mail to Switzerland, as well as some aerogrammes. (Photo =  www)		✉	500	(€ 475)

Bid on-line live as if you were attending the sale in the auction room: [www.corinphila.com](http://www.corinphila.com)





ex 3174

## Denmark - Scadta

- 3174→** 1923/27: Selection of Scadta Consular overprint 'D', incl. handstamped 'D' in violet on 15 c. carmine used, scarce black handstamp on 30 c. blue unused with cert. Philatelic Foundation (2000) and small 'D' handstamp in violet on 50 c. green used, as well as 1927 machine overprint in black the complete set of 12 values to 5 p. with 20 c. registration stamp, all unused with much o.g., 2 p. orange marginal from right of sheet with some paper adherences, otherwise fresh and fine Scott CLD3+ 12+ 18+ 35/45+ CFLD4 = \$ 550, Mi = € 1'050.

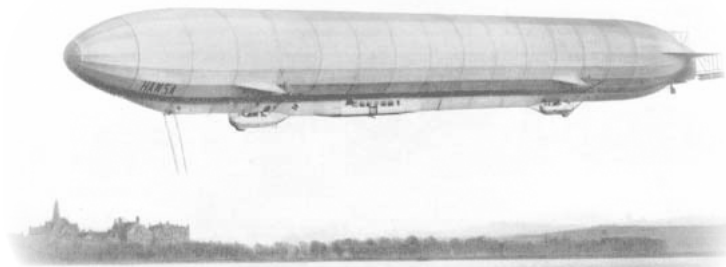
Start price  
in CHF

Start price  
approx. €

**200** (€ 190)

## Zeppelin Mail

LZ 13 Hansa



3175

- 3175→** 1912 (Sept. 19): Airship LZ 13 HANSA - Copenhagen Flight, lettercard franked with 2 ö. red + 3 ö. grey, each in a horizontal pair for 10 ö. rate, cancelled on board with violet handstamp and "Kopenhagen IX 19.9.12 1-2E" cds. to "Praestø 19.9.12 10-11E", scarce Sieger 5A = € 3'000.
- 3176→** 1932/36: Group of ten covers/cards flown by Zeppelin on various flights, mostly with Berlin connection flight, including various South America flights starting with 1932 first flight from Copenhagen to Santiago de Chile up to 1934 Christmas flight to La Paz in Bolivia. A scarce and appealing selection Sieger = € 2'300+ (Photo = [www.zeppelinmail.com](http://www.zeppelinmail.com))



**750** (€ 715)



**500** (€ 475)



3177



3178

## Catapult Mail

- 3177→ 1931 (May 10): Steamer 'Bremen' - New York, card franked with 10 ö. green horiz. pair tied by "KOEbenhavn LUFTPOST 4.5.31" cds. in combination with German Eagle issue 10 Pf. + 20 Pf. + 50 Pf. cancelled at "Köln Luftpostamt -4.5.31 7-8N" with special cachets shore to ship and catapult flight. Fine and scarce acceptance Haberer 40 Dk = DM 1'500.
- 3178→ 1931 (Aug. 19): Steamer 'Bremen' - New York, envelope franked with 1 Kr. brown + 50 ö. grey tied by "KOEbenhavn LUFTPOST 13.8.31" cds. with special cachets shore to ship and catapult flight. Fine Haberer 64 Dk = DM 1'000.

Start price  
in CHF      Start price  
approx. €

✉      200      (€ 190)

✉      200      (€ 190)



3179



3180

- 3179→ 1931 (Sept. 27): Steamer 'Europa' - New York, card franked with 15 ö. + 25 ö. + 50 ö. all tied by "KOEbenhavn 21. SEPT. 31" advertising duplex with adjacent special cachets shore to ship and catapult flight. Fine and scarce Haberer 74 Dk = DM 1'000.
- 3180→ 1933 (Sept. 14/15): Steamer 'Bremen' - New York, envelope franked with 15 ö. violet (2) + 50 ö. grey, all tied by "KOEbenhavn LUFTPOST 8.9.33" cds. backstamped at "Köln Flughafen -9.9.332" with adjacent special cachets shore to ship and catapult flight. Fine and scarce acceptance Haberer 143 Dk = without price.

✉      200      (€ 190)

✉      200      (€ 190)



3181

Start price  
in CHF      Start price  
approx. €

- 3181→** 1933 (Oct. 1/2): Steamer 'Bremen' - New York, envelope franked with 15 ö. violet horiz. pair + 50 ö. grey, all tied by "KOESENHAVN LUFTPOST 25.9.33" cds., backstamped at "Hamburg Fuhlsbüttel 25.9.33 16-17" with adjacent special cachet of the catapult flight. Fine and scarce acceptance Haberer 147 Dk = without price.



**200** (€ 190)



3182

- 3182→** 1934 (Aug. 1): Steamer 'Bremen' - New York, envelope franked with 20 ö. green (2) + 50 ö. grey, all tied by "KOESENHAVN LUFTPOST 25.7.34" cds., backstamped at "Köln Flughafen 25.7.34-2" on reverse, with adjacent special cachets shore to ship and catapult flight. Fine and scarce acceptance. Cert. Simon (2002) Haberer 169Dk = DM 900.



**200** (€ 190)

- 3183→** 1931/34: Group of 14 covers/cards from different North Atlantic Catapult Flights from Denmark to USA, all with good frankings and shore to ship flights, including Haberer Nos: 48Dk, 52Dk, 58Dk, 64Dk, 72Dk, 97Dk, 101Dk, 110Dk, 117Dk, 121Dk, 125Dk, 150Dk, 167Dk, 170Dk, as well as scarce cover sent by steamer 'Columbus' (2.7.31). A fine assembly (Photo = [www.haberer.de](http://www.haberer.de))



**1'000** (€ 950)



## Collections

		Start price in CHF	Start price approx. €
<b>3184</b>	1851/1945c.: Collection with used 1851 2 rbs. blue (2) used, 4 rbs. brown (60+) including strips of three (6), 1854/63 2 sk. (4), 4 sk. red-brown (40), 8 sk. (2) and 16 sk. (2), 1858 4 sk. (40+); 1864/70 sets used (2), extensive Posthorn issues, 1912/1915 Post Office 5 kr. red mint and used (7), extensive definitive and commemorative issues fresh mint, Postal Ferry issues mint incl. 1919 POSFFAERGE error on 10 ö. red single and in a block of nine mint, 1 kr. brown in block of four mint and used, an interesting collection of high catalogue value. (Photo =  www)	<b>1'000</b>	(€ 950)
<b>3185→</b>	1851/2000c.: Mint collection with value mostly in issues from 1875, with 1851 4 rbs, 1858 8 sk. green, 1870 2 sk. and 16 sk., Bicoloured 1875 3 ö. (6, shades), 4 ö. (6) including imperf. pair, 5 ö., 8 ö. (3), 12 ö. (6, shades), 16 ö. (3), 20 ö. (5, shades, incl. pair with one showing inverted frame), 25 ö. (6, shades), 50 ö. (2) and 100 ö. (6); perf 12¾ issue with fine selection incl. block of 50 ö., 1882/1902 Vapentyp incl. block of 20 ö. blue, 1895/1902 1 ö. orange imperforate, 1904/06 Christian IX issue with varieties and shades, 1907/12 Frederik VIII set with varieties (5 ö. 'white spot' etc) and shades, 1912 GPO 5 kr. (3) and 1915 GPO 5 kr. (3), 1913 Christian X set incl. 10 ö. imperf pair, 50 ö. black & wine red in unm. corner block of four, 80 ö. block of four, 2 kr. red & grey in block of four, 1913 2 ö. red imperf block, 1918 surcharged set of ten in blocks, 1921 10 ö. on 20 ö. block with 'No Pearl in 10' variety, 1921/27 12 ö. retouch variety in pair, 1927 Caravel 15 ö. red with OPE for ORE variety in strip, 1934 2 kr. block with retouch, Airmail Miniature sheet of 2000 imperforate at left and at right, myriad further fine stamps and varieties with 40 certificates, condition generally exceptionally fine. A wonderful lot. (Photo =  www)	<b>5'000</b>	(€ 4'750)
<b>3186</b>	1875/1945: 'Back of the Book' Collection with Official issues from 1875 with 2 sk. mint and a used pair, 4 sk. mint (3, two with certs.), 16 sk. in superb used strip of three, 1875/1923 values mint, 1917 Soldier's Stamps optd. 'SF' with 5 ö. green pairs (2) showing position 21 with inverted 'S' mint, Porto/SF 10 ö. red with pair showing same variety mint, Postage Due sets mint and used with some multiples, 'Gebyr' issues, Newspaper stamps incl. 1914 20 ö. green imperforate mint, fine array of booklet tête-bêche varieties used (7 ö. orange & 3 ö. grey in eleven pairs or strips), Schleswig 'I Zone' set mint in blocks of four and single set used, rare 'C.I.S.' set used on piece complete (Facit = 30'000 skr. cert.), Feltpost set of three on piece used etc. Many items with certs., viewing is a pleasure. (Photo =  www)	<b>2'000</b>	(€ 1'900)
<b>3187</b>	1904/1982c.: Mint Collection with 1904 surcharge set and duplication, 1913/24 issue with 27 ö. black & red (3) and other better values, 1925/29 Airmail sets (2) and duplicates, 1929 Cancer Issue sets (3), 1930 Christian X issue sets of ten (2), 1934 Airmail sets (3), thereafter seemingly complete with much useful duplication throughout. (Photo =  www)	<b>500</b>	(€ 475)
<b>3188</b>	1912/2004c: Collection with a few bicoloured Öre values mint, 1912/15 GPO 5 kr. brown-red mint, 1913/28 Christian X values mint with fine 2 kr. grey, 1918 Surcharged Newspaper issue set of seven and ten complete mint, Caravel set mint, 1934 definitives mint, Airmail mint, H C Andersen set with interpaneau tête-bêche pairs mint, later issues complete through to the present day, replete with Afa and Facit listed varieties, Booklets, Postal Ferry issues with 1919 10 ö. and 15 ö. values in strips of three with 'Posffæрге' error, also a complete collection of Aland Island and apparently complete FDC's etc. (Photo =  www)	<b>500</b>	(€ 475)
<b>3189</b>	1933/93c.: Collection in mint blocks of four, most unmounted, with 1933 Caravel 25 öre blue, Type I, the superb mint block of four (Facit = 6'000 skr), 1934 Airmail set of five in blocks, Caravel 1934 20 ö. on 15 ö. red with block of four showing 'hook on mast' variety (Facit = 12'000 skr) and another block with surcharge misplaced, commemoratives in mint blocks, a fresh and fine lot with high catalogue value. (Photo =  www)	<b>400</b>	(€ 380)
<b>3190</b>	1864/1905: Used 'Skilling' Collection with 2 sk. blue (8), 3 sk. lilac (14), 4 sk. red including an imperforate pair and superb examples with KLH and MERN handstamps, 8 sk. grey-brown (9) including a delightful strip of three, 16 sk. greenish grey (9) with superb choice examples showing numeral 1, 7, 12, 17, 51 and 217; rare 8 sk. and 16 sk. with superb line perf. 12½ examples; bicoloured 1870 issue presented by printing with examples of nearly every shade from 2 sk. (15, including a strip of five on piece), 3 sk. purple & grey (12) with beautiful pairs cancelled MALMO cds's, 4 sk. (14) including a strip of three with rare line perf. 12½, 8 sk. brown & grey (9), 16 sk. green & grey (8), 48 sk. lilac & brown (5) including a pair and a fine single example cancelled 55 numeral (ex Gene Scott). A fine classic lot with much of interest to the specialist with 24 certificates. (Photo =  www)	<b>750</b>	(€ 715)
<b>3191</b>	1904/1987: Collection of Jul stamps, with singles, usages on cover, mint multiples and some booklets as well as a written up Stamp Day collection, with many hundreds of commemorative covers/cards of Denmark, Norway, Sweden and Iceland. (Photo =  www)	<b>200</b>	(€ 190)



3192

### Danish West Indies

- 3192** 1873/1902: 4 cents dark ultramarine & brown, perf. 14 x 13½, first printing of September 1873, a fine used horizontal pair, positions 33-34 with pos. 34 showing 'white dot between T and I' plate flaw, neatly tied by concentric ring cancellation in black to 2 c. blue postal stationery envelope to Copenhagen. Reverse with 'St. Thomas' transit cds (22.8.1893) and arrivals (9/9) in black. Minor edge wear to envelope but a scarce and most appealing cover. Cert. C. A. Møller (1994).

Facit

Start price  
in CHFStart price  
approx. €

7av12

**250**

(€ 240)



3193



3194

- 3193** 1873/1902: Bicoloured 1 c., 3 c., 4 c., 5 c., 7 c., 10 c. and 12 c. used on 1902 registered cover to Moudon, Switzerland together with 1900/03 1 c. green and 5 c. blue, all tied by 'Frederiksted' datestamps (9.8.1902) in black. Framed registration cachet in red at right and New York registration label on front, reverse with Moudon arrival (30/8) in black. A philatelic but charming franking.

Provenance: Collection 'Cihangir', Corinthila sale 123 (Oct 2000), lot 3656.

**250**

(€ 240)

- 3194** 1873/1902: 7 c. dull orange-yellow & red-lilac, second printing, and 1900 5 c. clear blue used on 3 c. orange postal stationery envelope to USA all tied by 'St. Thomas' cds's (3.3.1903) in black. Registration handstamp at left and reverse with New York transit (10/3) and Everett, WA arrival cds (15/3) in violet. A scarce and most attractive cover: the 7 c. value being rare thus Facit = 15'000 skr.

Provenance: Collection 'Cihangir', Corinthila sale 123 (Oct 2000), lot 3655.

9b+ 21a

**300**

(€ 285)