

Wednesday, 28 November 2018, 11:30 h

FROM AUSTRALIAN STATES TO THE COMMONWEALTH OF AUSTRALIA 1850-1960

The 'BESANÇON' Collection
(part III)



The First Fleet entering Port Jackson on January 26, 1788

NEW SOUTH WALES

1788 A fleet of 11 ships with convicts, soldiers and others arrived at Botany Bay in January 1788. Captain Phillip proclaimed the new colony. The first settlement was made at Sydney. The area was known as New South Wales with Sydney as the administrative centre and included all territory east of longitude 135° East.

1803 The Sydney Gazette of 10 July 1803 first mentions Postal services.

1825 ‚Act to Regulate the Postage of Letters in New South Wales‘ under Governor Sir Thomas Brisbane.

1838 ‚Act to Provide for the Conveyance and Postage of Letters‘ under Governor Sir Richard Bourke introduced letter charges according to weight and distance carried.

A cheap local Sydney Post is established by the issue of prepaid embossed stamped envelopes.

1848/49 Proposals for a uniform rate of postage followed by the ‚Act to Establish a Uniform Rate of Postage and to consolidate and Amend the Law for the Conveyance and Postage of Letters‘ which took effect from 1 January 1850. The Act authorised the issue of adhesive postage stamps.

1850 The first stamps ‚The Sydney Views‘ were issued. They were engraved locally on copper plates. The 1d. by Robert Clayton, the 2d. by John Carmichael and the 3d. by H.C. Jervis. All three copper printing plates wore rapidly and were variously re-engraved by H.C. Jervis.

1851 The second locally produced ‚Laureated‘ issue, engraved by John Carmichael and H.C. Jervis on steel plates (1d., 2d. plate I, 3d.) and on copper plates (2d. plate II, 6d., 8d.)

1852 Stamps to prepay postage made obligatory.

1854 The third ‚Diadem‘ issue made from engraved steel plates made by Perkins, Bacon in London.

1856 ‚Laureated‘ Sixpence Registration Stamp.

From 1862 New issues printed from typographed plates printed by De La Rue in London.

1879 First appearance of O.S. overprinted Official Stamps



First Fleet Entering Botany Bay



Government House in Sydney



Custom House and Circular Wharf in Sydney

Essays by Thomas Ham



Thomas Ham

3001

Gibbons

Start price
in CHF

Start price
approx. €

- 3001** 1850: Thomas Ham 'Two Pence Blue' Essay, photo-lithographic facsimile of the original Essay which is in the Thomas Tapling Collection in the British Library, comprising three impressions on glazed card with black ink endorsement at left and further manuscript '3d.' and 'This Blue would be brighter; T. H.'. This facsimile was produced by Alfred van Dyck, some time before the originals were sold by him to Tapling and prior to Thomas Tapling's death in 1891. We record just this sole example of this reproduction last sold at Sotheby's, London, 15 December 1995, lot 321.

Provenance: Collection W. W. Mann and docketed thus in pencil on reverse.

Essay

(*)

500 (€ 450)



3002

- 3002** 1850: Thomas Ham 'Two Pence Red' Essay, photo-lithographic facsimile of the original Essay which is in the Thomas Tapling Collection in the British Library, comprising three impressions on glazed card with black ink endorsement at left and further manuscript '1d.' and 'This red can be a little darker; T. H.'. This facsimile was produced by Alfred van Dyck, some time before the originals were sold by him to Tapling and prior to Thomas Tapling's death in 1891. We record just one other example of this reproduction (copy with the lot), ex Sir Gawaine Baillie, sold at Sotheby's, Melbourne in July 2005, lot 815, which was trimmed down and therefore not as fine as the example offered here.

Provenance: Collection W. W. Mann and docketed thus in pencil on reverse.

Essay

(*)

500 (€ 450)

Essays by Carmichael



3003



3004

- 3003** 1850: Carmichael Essay for proposed 6 d. 'Laureated Crown' and 1 s. 'Lion & Crown' set-tenant Essays, imperforate on thick wove paper (59 x 35 mm.), printed in black. Fresh, fine and very scarce.

Provenance: Collection George Ginger, RL, London, 5-6 December 1945, lot 492.

- 3004** Carmichael 'Essays' for the proposed Sydney View issue, copied from the Great Britain 1840/41 designs, 1 d. values (3), imperforate in black, blue and in red on white or yellowish wove paper. Presumably reprints (see Robson Lowe Encyclopaedia page 19) but nevertheless scarce.

Gibbons

Start price
in CHF Start price
approx. €

Essay (*) **200** (€ 180)

Essays (*) **120** (€ 110)

1850 (Jan.) One Penny, Sydney View, Plate I, no clouds



3005

- 3005** 1 d. carmine-lake, a horizontal used pair, Plate I, positions 4-5, close but clear at upper left otherwise with huge margins all round, cancelled by watery but bold strikes of "89" obliterator of Kempsey. An attractive multiple $G_i = £ 1000+$.

Note: The ink for the numeral obliterators was frequently lacking in the linseed oil ingredient. These 'water strikes' are nowadays scarce, largely due to forgers realising that the 'water strikes' would wash off more easily to form an unused stamp.

1 **350** (€ 315)



3006

- 3006** 1 d. carmine, Plate I, position 7, a superb used example on small piece, large even margins all round, cancelled by "45" numeral obliterator of Binalong. Scarce and most attractive. Signed Ferchenbauer $G_i = £ 500$.

Provenance: Corinphila sale 80, March 1990, lot 5240.

2 △ **150** (€ 135)



Alfred H. Caspary



Josiah K. Lilly Jr.



John R. Boker Jr.



3007

Gibbons

Start price
in CHF

Start price
approx. €

- 3007** 1 d. pale red on hard bluish paper, Plate I, position 8 (Hill unshaded), a fine unused example with large margins all round, of excellent delicate colour and large part og. Merest trace of corner bend mentioned for full accuracy, an extremely rare stamp in such excellent quality and of impeccable provenance. Cert. RPSL (1968) Gi = £ 11'000.

Provenance: Collection Alfred J. Caspary, Harmers, London, 6 Oct 1958, lot 18.

Collection Josiah K. Lilly, Siegel, New York, 15-16 May 1968, lot 273.

Collection John R. Boker Jr., Harmers, London, 14 April 1981, lot 2.

5

*

3'500 (€ 3'150)



3008

- 3008** 1 d. pale red on hard bluish paper, Plate I, position 15, worn impression, a fine unused example, even margins all round, fresh and fine, without gum. Rare. Cert. Ceremuga (2018) Gi = £ 11'000.

5

(*)

1'500 (€ 1'350)



3009

- 3009** 1 d. pale red on hard bluish paper, Plate I, positions 23-24, a used horizontal pair with clear margins at top and marginal at base, each neatly cancelled by "90" numeral obliterations of Grafton. A fine pair Gi = £ 950+.

5

200 (€ 180)

1850 (Aug.), One Penny Plate I re-engraved by Henry C. Jervis (commonly termed Plate II with clouds)



3010



3011

- 3010** 1 d. dull lake on hard bluish paper, Plate I, positions 9/14, a very fine used vertical pair, with large margins all round, neatly cancelled by mute obliterations in black. Cert. BPA (1975)

Gi = £ 1'000+.

- 3011** 1 d. vermillion on hard toned paper, Plate II, position 2, early impression, a fine used example of good rich colour, large marginal at top and with large margins on all sides, lightly cancelled by clear "69" numeral obliterator of Murrurundi. A fine and rare usage

Gi = £ 375.

Provenance: Collection Dr. W. R. D. Wiggins, RL, Zurich, 26 Nov 1981, lot 1546.

Gibbons

Start price
in CHF

Start price
approx. €

6

300

(€ 270)

7

200

(€ 180)



Philipp von Ferrary



3012

- 3012** 1 d. dull carmine on hard toned paper, Plate II, position 1, the famous unused example, marginal from top of sheet and good margins on other three sides, slight stain on front from the still intact original somewhat browned gum. Rare and splendid rarity for the connoisseur. Signed H. Bloch, A. Diena. Cert. P. Holcombe Gi = £ 9'000.

Provenance: Collection Philipp von Ferrary, sale 4, Paris, 14-16 June 1922, lot 336.

8

*

3'500

(€ 3'150)



3013



3014



3015

- 3013** 1 d. dull carmine on hard toned paper, Plate II, position 17, a very fine used example with good even margins, lightly cancelled by part obliterator in black *Gi* = £ 375.
- 3014** 1 d. carmine, Plate II on hard white paper, a fine used vertical pair with large margins all round, positions 15/20 with upper stamp showing 'No Clouds' variety, lightly cancelled in black. A most attractive pair *Gi* = £ 1'100+.
- 3015** 1 d. dull carmine on hard toned paper, Plate II, positions 19-20, a fine horizontal pair used on small piece, clear to large margins all round and showing portion of adjoining stamps at top, cancelled by single strike of the mute obliterator in black. Fine and most attractive. Signed Ferchenbauer *Gi* = £ 750+.

Provenance: Corinthila sale 80 (March 1990), lot 5241.

Gibbons

Start price
in CHF

Start price
approx. €

8

150 (€ 135)

8c+ 8

200 (€ 180)

8

△

300 (€ 270)



3016



3017



3018

- 3016** 1 d. crimson-lake on hard greyish paper, Plate II, position 19, used example with clear to good margins all round, neatly cancelled in black. Signed Miro *Gi* = £ 375.
- 3017** 1 d. crimson-lake, Plate I on hard greyish paper, position 7 with 'No Trees on Hill' variety, a fine used example lightly cancelled in black leaving the vignette clear. Scarce and attractive stamp *Gi* = £ 750.
- 3018** 1 d. crimson-lake on hard greyish blued paper, Plate II, position 7, a fine used example with large margins all round, showing plate variety 'No Trees on Hill', lightly cancelled in black. Cert. BPA (1981) *Gi* 12a = £ 750.

9

120 (€ 110)

9a

200 (€ 180)

9a

200 (€ 180)



3019

- 3019** 1 d. crimson-lake on hard bluish paper, Plate II, positions 14-15, a fine used horizontal pair with ample to large margins all round, characteristically printed with the somewhat blurred print of the earlier impressions; position 15 showing "Without Clouds' Plate Flaw, neatly cancelled by "82" numeral obliterations of Armidale. An attractive and scarce multiple *Gi* = £ 1'100+.

9+ 9c

300 (€ 270)



Alfred F. Lichtenstein



Louise Boyd Dale



3020



3021



3022



3023

Gibbons

Start price
in CHF Start price
approx. €

- 3020** 1 d. 'gooseberry-red' on hard greyish blued paper, Plate II, positions 9/14, a fine used vertical pair in this vibrant shade, large margins all round, neatly cancelled by "55" numeral obliterator of Newcastle. Rare and very fine multiple. Signed Holcombe Gi = £ 1'100+.
Provenance: Collection Alfred Lichtenstein & Louise Boyd Dale, Harmers, New York, 14 May 1990, lot 10.
- 3021** 1 d. dull carmine, Plate II, intermediate impression on hard greyish wove paper, position 10, a fine unused example with clear to large margins all round, fresh and very fine unused without gum. Cert. Ceremuga (2018) Gi. = £ 10'000.
- 3022** 1 d. carmine, Plate II on horizontally laid paper, a superb used example with large even margins all round, cancelled by "26" numeral obliterator of Shoalhaven in black. A fine stamp Gi = £ 700.
- 3023** 1 d. crimson-lake (shades) on hard greyish paper, Plate II, the selection of eight used examples including two horizontal pairs, all with four clear margins, generally fine, one pair with slight double print error on position 12. A scarce and attractive group Gi = £ 3'000+.

10

350 (€ 315)

11

(*)

1'500 (€ 1'350)

11

200 (€ 180)

11

500 (€ 450)

John F. Seybold
1858-1909



3024



Charles Lathrop Pack

- 3024** 1 d. brownish red on hard greyish blued paper, Plate II, position 1, a fine used example, four clear margins, used on 1851 cover to Pitt Street, Sydney cancelled indistinctly in black with framed '2 / O'Clock' handstamp at right. Backstamped 'Sydney / New South Wales' (Jan 1) in black. Some minor wear to envelope but a scarce usage.
*Provenance: Collection John F. Seybold (1909).
Collection Charles Lathrop Pack, Harmers, New York, 6-15 Dec 1944, lot 994.
Collection Alfred Lichtenstein & Louise Boyd Dale, Harmers, London, 14 May 1990, lot 58.*

11

**500** (€ 450)



Charles Lathrop Pack



John R. Boker Jr.



3025

Gibbons
Start price in CHF Start price approx. €

- 3025** 1 d. dull carmine on hard greyish blued paper, Plate II, positions 6-7-8-9, a fine used horizontal strip of four, large margins all round, showing position 7 'No Trees on Hill' and position 8 'Hill unshaded' plate varieties, tied in black to cover to Burrown endorsed 'via Yass' by indistinct "31" numeral obliterations of Picton. The strip with small contemporary bend at lower right corner mentioned for full accuracy only. Reverse with oval datestamps of Picton (July 22), Yass (July 24) and Goulburn in black. Some minor wear to envelope but a rare and most remarkable usage of exceptional provenance. Signed A. Dena. Cert. P. Holcombe (1999).
Provenance: Collection Charles Lathrop Pack, Harmers, New York, 6-15 Dec 1944, lot 1008.
Collection John R. Boker Jr., Harmers, London, 14 April 1981, lot 6.
Collection 'España', Harmers, London, 23 March 1984, lot 2054.

11+ 11a+
11b **5'000** (€ 4'500)



3026

Gibbons

Start price	Start price
in CHF	approx. €

- 3026** 1 d. brownish-red on hard greyish blue paper, Plate II, positions 15/20, a used vertical pair, marginal from right of sheet with position 15 showing 'No Clouds' plate variety, the lower stamp cut into at left, well cancelled by "95" numeral obliterator of Brisbane (Queensland). Trace of double printing variety on each, despite the fault a spectacular usage *Gi* = £ 1'100+.
Provenance: Collection John S. White, Spink, London, 22 May 1997, lot 77.

12+ 12c

200 (€ 180)

1850 (Jan.), Two Pence, Plate I, vertical-lined background



3027



3028

- 3027** 2 d. greyish-blue, Plate I, intermediate impression, position 12, a fine used corner marginal example with huge margins on all sides, cancelled by centrally struck "35" numeral obliterator of Goulburn. Fine and rare. Cert. BPA (1978) *Gi* = £ 325.
- 3028** 2 d. greyish blue, Plate I, position 17, Intermediate impression, a superb large margined used example neatly cancelled by "3" numeral obliterator of Windsor *Gi* = £ 325.

16b

200 (€ 180)

16b

150 (€ 135)

3029

- 3029** 2 d. greyish blue, late intermediate impression, Plate I, position 6-7, a fine used horizontal pair marginal from top of sheet, of fine colour with large margins all round, neatly cancelled by two strikes of "45" numeral obliterator of Binalong in black. Charming and scarce multiple *Gi* = £ 650+.

16b

200 (€ 180)



'Phoenician' of the Aberdeen White Star Fleet



3030

Gibbons

Start price in CHF Start price approx. €

3030 1 d. carmine-lake, Plate I, showing a blurred printing (early thus) and Intermediate Impression of 2 d. greyish-blue, each with large margins all round, used on 1850 cover to Glasgow endorsed *'per Phoenician'* (White Star Line Clipper under Captain Sproat), tied by barred obliterators in black with oval 'PAID SHIP LETTER / Crown / SYDNEY' datestamp in red below (Jan 22). Rated '8' (pence) for Ship Letter charge and struck on arrival with framed 'Glasgow' datestamp (April 24). Slight closed tear in front panel not affecting the appearance of a wonderful first issue cover *used in the first month of issue*. Cert. RPSL (2018).

Note: The 'Phoenician' of the Aberdeen White Star fleet, was to make a reputation for speed under command of one of best known passage makers of the day, Captain Sproat. The first 3 voyages were considered extraordinarily good for those days:

1849-50 London-Sydney 90 days, Sydney-London 88 days, carrying this cover.

1850-51 London-Sydney 96 days, Sydney-London 103 days.

1851-52 London-Sydney 90 days, Sydney-London 83 days.

1+ 16b



2'500 (€ 2'250)



3031



3032



3033



3034

Gibbons

Start price
in CHF Start price
approx. €

3031 Intermediate Impression, 2 d. greyish blue, used examples (3) all with four margins, with a delightful example showing both vertical and horizontal dividing lines, second example with bold strike of "3" obliterator in black (cert. RPSL, 1944); third example similarly cancelled in black; this last ex 'España' collection, lot 2116 Gi = £ 975.

16b

250 (€ 225)

3032 2 d. deep or greyish blue, Plate I, intermediate impressions, used examples (4) all with four margins, with position 5 showing "95" numeral cancel (signed A. Diena), position 8 similarly cancelled, an example in a deep shade cancelled "2" (cert. RPSL, 1953) and a fourth example from base of the sheet, signed Brun and Calves Gi = £ 1'300.

16b+ 16c

300 (€ 270)

3033 2 d. greyish-blue, Plate I, later impression without clouds, position 3 on the sheet of 24 subjects, large margins all round, well cancelled by bold "3" numeral of Windsor. Signed A. Diena. Gi = £ 190.

17

100 (€ 90)

3034 2 d. blue, Plate I, later impression, a superb large margined used example neatly cancelled by "21" numeral obliterator of Campbelltown. A most attractive stamp. Cert. RPSL (1959)

Gi = £ 190.

Provenance: Collection Lars T. Amundsen, SG, London, 6-8 Dec 1967, lot 305.

17

120 (€ 110)

The Paterson District from Morpeth



3035

3035 2 d. greyish-blue, Plate I, late impression, position 3-4, a fine horizontal pair used on 1850 entire letter to Sydney, large margins all round, tied by neat strikes of "62" numeral obliterations of Morpeth. Reverse with 'Morpeth / Crown / New S. Wales' datestamp (April 12) in black and Sydney arrival datestamp. File fold well away from the adhesives, a fine and attractive entire.

Provenance: Collection 'España', Harmers, London, 23 March 1984, lot 2128.

17

**500** (€ 450)



3036



3037



3038

- 3036** 2 d. dull blue, later impression, Plate I, position 13, a fine corner marginal used example from lower left of sheet, huge margins on three sides and clear at top, cancelled by "48" numeral obliterator of Tarcutta. A fine and scarce usage. Signed A. Diena Gi = £ 180.
- 3037** 2 d. dull or greyish blue, Plate I, later impressions, used examples (5) all with four margins, one with fine "8" obliterator cancel, one example on dated piece showing clear "Double Print" variety - this being scarcer on the 2 d. value than on the 1 d. Sydney View. Generally fine, a good group Gi = £ 900.
- 3038** 2 d. dull blue, later impression, Plate I, position 13, a fine lower left corner marginal example cancelled by "71" numeral obliterator of Tamworth, superb but for minor bend in corner margin only, matched with 2 d. blue, Plate I, position 13, after Retouch, also with four large margins, cancelled by "64" numeral obliterator of West Maitland. A fine and scarce pair Gi = £ 480.

Gibbons

Start price
in CHF

Start price
approx. €

18

150 (€ 135)

17/18

△

200 (€ 180)

18+ 19

200 (€ 180)

1850 (April - July), Two Pence, plate entirely re-engraved by Henry C. Jervis (plate II - horizontal-lined background)



3039



3040



3041

- 3039** 2 d. deep blue, Plate II, a superb large margined used example with dividing line at base, cancelled by complete strike of Victoria / 37/V butterfly handstamp in black. A fine and attractive stamp.
- 3040** 2 d. indigo, Plate II, position 8, a fine used example in a deep shade, large margins all round showing 'No Whip' plate variety, cancelled by "66" numeral obliterator of Singleton. Fresh and fine, a most attractive stamp Gi 24e = £ 475.
- 3041** Plate II, 2 d. indigo, two used examples with large margins all round, both from an early state of the Plate, with fine example from position 11 on the sheet of 24 subjects, and a further example showing major horizontal pre-printing paper fold. Scarce Gi = £ 700.

21

150 (€ 135)

21e

200 (€ 180)

21+ 21 var

200 (€ 180)



View of Kiama



3042

Gibbons

Start price
in CHF Start price
approx. €

- 3042** 2 d. indigo, Plate II, position 12, a fine four margin example, roughly separated from corner margin at edges, used on 1850 cover to Sydney tied by "25" numeral obliterator of Kiama in black. Reverse with oval 'Kiama / Crown / New S. Wales' datestamp in black (July 15) and Sydney arrival (July 17) in black. File fold well away from adhesive, a fine cover.

21



400 (€ 360)



3043



3044



3045



3046

- 3043** 2 d. grey-blue, Plate II, position 22, early impression, a very fine used example with large even margins all round, cancelled by fine strike of Victoria Butterfly handstamp No. 37 (Melbourne) in black. Exceptional and scarce *Gi* = £ 300+.
Provenance: Corinphila sale 107 (Sept 1998), lot 4825.

23

200 (€ 180)

- 3044** 2 d. blue (shades), Plate II, early impressions, fine used large margined used examples (7), with some splendid examples including position 6 cancelled by "66" numeral, position 8 showing 'No Whip' variety cancelled "38" numeral, position 12 cancelled by "62" numeral, position 16 cancelled "66", one or two with minor imperfections but a scarce and attractive group *Gi* = £ 2'000+.

23

400 (€ 360)

- 3045** 2 d. bright blue, Plate II, position 22, early to intermediate impression, a very fine used example with large even margins all round, cancelled by scarce Sydney 'Diamond of Dots' cancellation in black. Scarce and fine *Gi* = £ 300.

24

200 (€ 180)

- 3046** 2 d. bright blue, Plate II, position 10, early impression, a very fine used example with large even margins all round, with plate variety 'Pick and Shovel omitted', cancelled by numeral "77" of Merriwa in manuscript. Exceptional and rare *Gi* = £ 600+.

Provenance: Collection A. Leslie Leon, RL, London, 14 March 1978, lot 58.

Collection 'España', Harmers, London, 23 March 1984, lot 2168.

24f

250 (€ 225)



Arthur Hind



3047

Gibbons
Start price in CHF Start price approx. €

3047 2 d. deep bright blue, Plate II, position 13, early impression, the famous unused example with large even margins all round, showing "CREVIT omitted" variety clearly, with contemporary manuscript on reverse "*never been used. I send this for you to keep*" over the partial browned gum. Negligible crease and minor dusting of age from gum, neither affecting the dramatic appearance of this exceptional and (most probably unique) rare stamp. A splendid item for the connoisseur. Cert. Ceremuga (2018) Gi = £ 12'000.
*Provenance: Collection Arthur Hind, Harmers, New York, 2-4 July 1934, lot 156.
Collection Dr. W. R. D. Wiggins, RL, Zurich, 26 Nov 1981, lot 1627.
Collection 'España', Harmers, London 23 March 1984, lot 2171.*

24g * **3'500** (€ 3'150)



Maurice Burrus

3048

Gibbons

Start price
in CHF Start price
approx. €

- 3048** 2 d. deep bright blue, Plate II, position 12, intermediate impression, a very fine used example with large margins all round and part of sheet margin at top, used on 1850 cover from Bathurst to Sydney tied by "9" numeral obliterator (with numeral reversed) of Bathurst in black. Reverse with 'Bathurst / Crown / New S. Wales' datestamp (Aug 1) and Sydney arrival cds (Aug 3) in black. An exceptional and charming cover. Signed A. Diena, Engel.
Provenance: Collection Maurice Burrus, RL, London, 11 Feb 1964, lot 279.

24

**1'000** (€ 900)'Pick and Shovel omitted'
plate variety

3049



3050



3051



3052

- 3049** 2 d. dull blue, Plate II, position 10, a fine used example with large margins all round, showing 'Pick and Shovel omitted' plate variety, lightly cancelled by "60" numeral obliterator of Paterson in black *Gi* = £ 425.
Provenance: Collection John R. Boker, Harmers, London, 14 April 1981, lot 13.
- 3050** 2 d. dull blue, Plate II, position 20, intermediate impression, a very fine used example with large margins all round, in a deep shade, 'No Whip' plate variety, cancelled by scarce Sydney 'Diamond of Dots' handstamp in black *Gi* = £ 350.
- 3051** 2 d. dull grey-blue, Plate II, position 13, intermediate impression, a very fine used example with sheet corner large margins and ample at right, showing 'CREVIT omitted' plate variety, cancelled by "62" numeral obliterator of Morpeth in black leaving the plate variety clear. A fine and attractive stamp *Gi* = £ 650.
Provenance: Collection W. R. D. Wiggins, RL, Zurich, 26 Nov 1981, lot 1648.
- 3052** 2 d. Prussian blue, Plate II, worn impression retouched at base, position 17, a fine large margined used example cancelled by good strike of "37" numeral obliterator of Bungendore. One small age spot at lower left but a scarce cancel. Cert. RPSV (1978) *Gi* = £ 325.

25f

150 (€ 135)

26e

200 (€ 180)

26g

180 (€ 160)

27

150 (€ 135)

1850 (Sept.), Two Pence plate re-engraved a second time by Henry C. Jervis (plate III)



3053



3054



3055

Gibbons

Start price
in CHFStart price
approx. €

- 3053** 2 d. ultramarine (shades), Plate III, the used selection (8), all with four margins, with position 1 showing Berrima "32" numeral, horizontal pair from positions 1-2, pos. 19 with 'No Whip' variety cancelled at Gunning with "43" numeral, further examples from positions 10 with 'Double Line on Bale', position 3 cancelled by Wellington "16" and another example with superb "78" numeral. A generally fine group $G_i = £ 1'800+$.
- 3054** Sydney Views 2 d., small group of six used examples incl. a horizontal pair from Plate I, positions 23-24 showing corner dividing lines, a Plate III example with '68' numeral of Scone in brown, 2 d. ultramarine Plate III cancelled by '38' numeral of Queanbeyan etc. A scarce and attractive group.
- 3055** 2 d. ultramarine (shades), Plate III, position 15, a fine used example with good even margins, lightly cancelled and thus leaving the 'No Whip' variety clear $G_i = £ 375$.

29

400 (€ 360)18+ 23+
26+ 29**250** (€ 225)

30a

120 (€ 110)

3056



3057



3058

- 3056** 2 d. ultramarine, Plate III, position 20, an unused example of excellent colour, large to very large margins all round, showing 'Fan with six segments' plate variety clearly, some natural thinning and browned original gum. An extremely rare stamp. Cert. BPA (1968) $G_i = £ 8'000+$.
Provenance: Collection A. Leslie Leon.

Collection 'V. P. Manwood', Siegel, New York, 8 Nov 1995, lot 4177.

30b

*

1'000 (€ 900)

- 3057** 2 d. dull blue, Plate III, position 4, used example with clear margins all round cancelled by scarce 'Lozenge of Dots' obliterator in black $G_i = £ 225$.

30

120 (€ 110)

- 3058** 2 d. ultramarine (shades), Plate III, the used selection of four margin examples (8) with two horizontal pairs from positions 6-7 and 7-8 and thus each showing one stamp with variety 'Double Lines on Bale', a generally fine and scarce group $G_i = £ 1'800+$.

30+ 30c

500 (€ 450)

3059



Campbelltown Post Office

- 3059** 2 d. deep blue, Plate III, position 5, a fine large margined example used on 1850 cover to Picton tied by bold strike of "21" numeral obliterator of Campbelltown in black. Reverse with 'Campbelltown / Crown / New S. Wales' datestamp (Dec 13) in black. Closed tear in address panel and adhesive lifted for checking and replaced. Despite the fault an attractive and scarce cover.
Provenance: Collection 'España', Harmers, London, 23 March 1984, lot 2229.

30

**200** (€ 180)

1851 (Jan.), Two Pence plate re-engraved a third time by Henry C. Jervis (plate IV)



3060



3061



Plate variety
'PENOE' for PENCE



3062

- 3060** 2 d. Prussian blue, on hard bluish grey wove paper, Plate IV, position 19, with large margins all round, of strong colour, cancelled by "32" numeral obliterator of Berrima. A fine stamp Gi = £ 170.
- 3061** 2 d. ultramarine, on stout yellowish vertically laid paper, Plate IV, positions 1-2-3-4, a superb used horizontal strip of four with enormous margins all round, each stamp beautifully cancelled by water strikes of "5" numeral obliterator of Gosford in brown. Ironed vertical bend on fourth stamp not affecting the appearance of a magnificent multiple Gi = £ 1'000+.
- 3062** 2 d. Prussian blue, Plate IV, a fine large margined used example on vertically laid stout paper, position 24, showing Plate variety PENOE for PENCE at base, lightly used leaving the flaw clear. Gi = £ 450.

Gibbons

Start price
in CHFStart price
approx. €

32

100

(€ 90)

34

750

(€ 675)

35f

150

(€ 135)

1851 (April), Two Pence plate re-engraved a fourth time by Henry C. Jervis (plate V)



3063

- 3063** 2 d. ultramarine, on hard greyish wove paper, Plate V, position 4, a fine unused example with large margins all round in a resonant shade, without gum but very fresh and fine for an unused Sydney View. Signed Herbert Bloch. Cert. BPA (1950) Gi = £ 8'000.

Provenance: *Probably ex Pack.*

Collection 'V. P. Manwood', Siegel, New York, 8 Nov 1995, lot 4243.

36

(*)

1'000

(€ 900)



3064

- 3064** 2 d. ultramarine, on hard greyish wove paper, Plate V, a superb large margined used example on Evans correspondence 1851 entire letter from Tarcutta to Albury, lightly tied by faint "48" numeral obliterator in black. Reverse with superb oval 'Tarcutta / Crown / New S. Wales' datestamp (June 27) in black and faint Albury arrival. A charming and scarce entire.

36

✉

300

(€ 270)



George Street in Sydney ca. 1850



3066



3065

- 3065** 2 d. ultramarine, on hard greyish wove paper, Plate V, position 17, a large margined used example with 'Pick and Shovel' omitted plate variety, used on 1851 small envelope from Berrima to Picton, tied by fine "32" numeral obliterator in black. Reverse with 'Berrima / Crown / New S. Wales' datestamp (July 21) of despatch. A fine and attractive cover.
Provenance: Collection E. R. Slade Slade, Harmers, London, 3-4 April 1979, lot 236.
- 3066** 2 d. ultramarine, on hard greyish wove paper, Plate V, position 22, a large margined used example on 1851 cover to Sydney with large "3" numeral in manuscript of Windsor. Reverse with oval 'Windsor / Crown / New S. Wales' datestamp (June 30) in black and Sydney arrival cds (July 1). A fine cover matched with equally fine 2 d. Plate V, also cancelled by large "3" in manuscript. An outstanding pairing and extremely fine and rare.
Provenance: Collection T. V. 'Tommy' Roberts, RL, London 26 April 1989, lot 2181.

Gibbons

Start price
in CHF Start price
approx. £

36

**400** (€ 360)

36

**750** (€ 675)

3067

- 3067** 2 d. dull blue, Plate V, position 21 on the sheet of 24 subjects, a fine large margined used example showing sheet margin at base, lightly cancelled in black. Fine and scarce thus
Gi = £ 180+.
- 3068** Sydney Views 2 d. blue (shades), the used selection with 15 examples, mostly fine to very fine from the later printings, with much cancellation interest (numbers 6, 26, 44, 46, 61, 64, 66, 71, 86 noted), including two single examples on large pieces. A scarce assembly Gi = £ 2'500+.

37

120 (€ 110)

19-37

750 (€ 675)



3069

		Gibbons		Start price in CHF	Start price approx. €
3069	2 d. dull ultramarine, Plate V, position 14, an early impression in thick vertically laid paper, an attractive unused example with large margins all round, couple of small ink spots in upper left corner square, otherwise fresh and fine, unused without gum. Exceptionally rare unused and most attractive. Cert. Ceremuga (2018) Gi = £ 12'000.	38	(*)	3'000	(€ 2'700)



3070

3070	2 d. ultramarine with violet tinge, on stout yellowish vertically laid paper, Plate V, position 13, a large margined used example showing dividing lines on three sides and sheet margin at left, with 'Circle in Bale' plate variety, neatly cancelled by "44" numeral obliterator of Yass. A fine and scarce stamp Gi = £ 425. <i>Provenance: Collection Dr. W. R. D. Wiggins, RL, London, 26 Nov 1981, lot 1703.</i>	38		200	(€ 180)
-------------	--	----	--	------------	---------



3071

3071	2 d. dull ultramarine on stout yellowish vertically laid paper, Plate V, position 24, a fine used example with good to huge margins, cancelled by bold "44" numeral obliterator of Yass. Scarce stamp Gi = £ 425.	38		150	(€ 135)
-------------	---	----	--	------------	---------

1850 (Jan.), Three Pence plate engraved by Henry C. Jervis



3072

Gibbons

Start price
in CHF Start price
approx. €

- 3072** 3 d. yellow green, on soft yellowish wove paper, position 8 on the sheet of 25 subjects, a fine used example with very large margins all round, cancelled by probable "56" numeral obliterator of Hexham. A fine stamp *Gi* = £ 325.

39

150 (€ 135)

3073



3074

- 3073** 3 d. yellowish green, on soft yellowish wove paper, position 20, a fine appearing used example in a deep shade with clear margins all round, used on 1850 entire letter from Sydney to Launceston, Tasmania tied by bold Sydney mute obliterator in black. Manuscript '4' (pence) Ship fee on front alongside 'Paid Ship Letter / Crown / Sydney' datestamp (April 26) in red. Reverse with 'Launceston' cds of receipt (May 15) in black. A fresh and very attractive entire.

39

✉

250 (€ 225)

- 3074** 3 d. yellow green, on soft yellowish wove paper, position 23 on the sheet of 25 subjects, a four margined used example with 'SIGIIUM' for 'SIGILLUM' plate variety, used on small 1850 piece with 2 d. greyish blue, Plate 1, later impression cancelled by "95" numeral obliterator of Brisbane (Queensland). Complete 'Paid Ship Letter / Crown / Sydney' datestamp (May 20) in red below. Rare and attractive piece *Gi* = £ 500+.

41b+ 17

△

250 (€ 225)

3075

- 3075** 3 d. yellowish green, on greyish wove paper, position 22, a used example with large even margins all round, cancelled by a water strike of "36" numeral obliterator of Braidwood in brown. Scarce *Gi* = £ 275.

42

150 (€ 135)



3076

Gibbons

Start price
in CHF Start price
approx. €

- 3076** 3 d. yellow green, on greyish wove paper, a fine example with very large margins all round, used on 1852 entire letter from Sydney to Rochdale, England endorsed '*per Clifton*', tied by mute obliterator in black. Manuscript '8' (pence) ship fee on front and reverse with Sydney despatch in black (Oct 9), London cds in red (April 27, 1852) and Rochdale arrival cds of the same day in green. A scarce and most attractive entire.

42



300 (€ 270)



3077



'SIGILLUM' FOR 'SIGILLUM'
plate variety



3078

- 3077** 3 d. bright yellowish green, on yellowish horizontally laid paper, position 23, used example with good margins all round and fine delicate colour, showing 'SIGILLUM' fort 'SIGILLUM' plate variety, cancelled by Sydney mute obliterator and in manuscript. Minute pinhole otherwise extremely fine Gi = £ 1'200.

Provenance: Collection John S. White, Spink, London, 22 May 1997, lot 197.

43eg

200 (€ 180)

- 3078** 3 d. yellow-green on bluish to grey wove paper, a fine used single and horizontal pair; the single from Position 22 showing the 'Missing Ray' flaw in upper left corner, the unplated pair in the emerald shade with clear to large margins all round Gi = £ 750+.

42+ 43

200 (€ 180)

1851 (Dec.), Laureated One Penny



'No leaves right of SOUTH'



3079

- 3079** 1 d. carmine on thick yellowish paper, position 7, a fine used example with four large margins clearly showing plate variety 'No leaves right of SOUTH', used on small piece with further 1 d. carmine, position 5, large margins all round and imperceptibly touched at top left corner only, sharing bold strike of very scarce "87" numeral obliterator of Ipswich (Queensland). Fine and rare Gi = £ 800+.

44+ 44a



300 (€ 270)



Maurice Burrus



'Two leaves right of SOUTH'



3080



Lars Amundsen

Gibbons

Start price
in CHF

Start price
approx. €

- 3080** 1 d. carmine on bluish medium wove paper, positions 15-16, the superb unused pair of excellent vibrant colour and full margins all round, left hand stamp showing 'Two leaves right of SOUTH' plate variety, fresh and very fine, large part og. A delightful and extremely rare multiple in the foremost quality for the connoisseur. Cert. BPA (1964) Gi 45+48b = £ 5'500+.

Provenance: Collection Maurice Burrus, RL, London, 11 Feb 1964, lot 306.

Collection Lars Amundsen, SG, London, 6-8 Dec 1967, lot 325.

Classics of the British Empire, SG, London, 4 Oct 1973, lot 79.

45+ 45b

*

2'500 (€ 2'250)

3081

- 3081** 1 d. carmine on bluish medium wove paper, positions 35/45, a used vertical pair with large margins all round, minute scissor cut in margin only at left and some minor thins not affecting appearance, neatly cancelled by two strikes of "69" numeral obliterator of Murrurundi in black Gi = £ 320+.

46

120 (€ 110)

3082

- 3082** 1 d. brick-red on bluish medium wove paper, an unused horizontal strip of four, marginal from left of sheet, in a vibrant shade, roughly separated at top but with clear to large margins all round, just touched into design on first stamp in upper left corner, small thins and diagonal crease not apparent on face, but all with large part crackly brown og. An extremely attractive and rare multiple. Cert. RPSL (1946) Gi = £ 7'500+.

Provenance: Collection George Ginger, RL, London 5-6 Dec 1945, lot 356.

48

*

1'500 (€ 1'350)



3083



3084

- 3083** 1 d. brick-red on very blued medium wove paper, a fine used example with good margins all round, cancelled by "57" numeral obliterator of Raymond's Terrace in black, and 1 d. scarlet with four margins, lightly used Gi = £ 300.
- 3084** 1 d. brick-red on bluish medium wove paper, an unused example with large margins all round, in a rich copper shade, fresh and fine, without gum Gi = £ 1'900.

Gibbons

Start price
in CHFStart price
approx. €

48+ 46

100

(€ 90)

49

(*)

250

(€ 225)

1851 (July) / 1855, Two Pence, Plate I



3085

- 3085** 2 d. ultramarine, on thick yellowish paper, Plate I, a fine used example on 1852 Evans correspondence cover to Albury, tied by "48" Tarcutta numeral obliterator in black. Reverse with 'Albury / Crown / New S. Wales' datestamp (Jan 15) of arrival. Stamp removed for checking and hinged back in to place as usual but a fine and attractive cover.

51

**Offer**

Gebot



3086



3087



3088

- 3086** 2 d. greyish blue, fine impression on greyish medium thick wove paper, Plate I, an unused example with large margins all round in a deep shade, fresh and fine unused, without gum. Signed Herbert Bloch Gi = £ 1'300.
- 3087** 2 d. bright blue on medium paper, slightly worn plate, an unused example with ample margins all round, position 10 showing '10 Leaves after South' variety, without gum. Scarce and attractive stamp Gi = £ 900+.
- 3088** 2 d. Prussian blue, worn impression on bluish medium thick wove paper, Plate I, position 10, an unused example with large margins all round and of rich colour, fresh and very fine unused without gum. Signed Herbert Bloch Gi = £ 850.
Provenance: Collection E. R. Slade, Harmers, London, 3-4 April 1979, lot 306.

55

*

250

(€ 225)

56 var

(*)

200

(€ 180)

57

200

(€ 180)



Alfred H. Caspary

'WACES for WALES'
plate variety

3093



3094

Gibbons

Start price
in CHFStart price
approx. €

- 3093** 3 d. dull yellow-green, on medium greyish paper, positions 27-28/37-38, a splendid used block of four of good colour, position 37 showing 'WACES for WALES' plate variety, clear to large margins all round, cancelled by Sydney mute obliterations in black. One stamp with filled pinhole otherwise a marvellous and rare multiple in excellent quality Gi = £ 750+.

Provenance: Collection Alfred H. Caspary, Harmers, London, 6 Oct 1958, lot 159.

67+ 67a

田

300

(€ 270)

- 3094** 3 d. dull yellow-green, on medium greyish paper, position 41-42, a fine used pair, marginal from base of sheet, in combination with 2 d. ultramarine, worn plate, all tied by "62" numeral obliterations of Morpeth. Scarce and attractive Gi = £ 250+.

Provenance: Collection Raymond S. Wilson, SG, London, 21 May 1968, lot 270.

67+ 58

△

150

(€ 135)

1852 (April), Six Pence



3095



3096

- 3095** 6 d. brown, Plate I, used examples (3) in differing shades on medium bluish grey wove paper, with two single examples with one cancelled by "84" numeral of Tenterfield, together with a piece bearing a fine example of the 6 d. yellow-brown used with 2 d. blue. Small imperfections but a scarce group Gi = £ 750+.

73/75

△

200

(€ 180)

- 3096** 6 d. greyish-brown, on medium bluish grey wove paper, Plate I, a superb used example with portion of adjoining stamp at left, showing extensive 'Double Print' variety, most apparent in the SIX PENCE at base, lightly cancelled leaving design clear, scarce and unusual stamp, together with the original July 1946 lot sheet Gi = £ 250.

76

Offer

Gebot

1853 (May), Eight Pence



3097

- 3097** 8 d. orange-yellow on medium blued paper, a fine used example with good margins all round, lightly cancelled in black Gi = £ 600.

80

200

(€ 180)

1854 (Jan. - March), Laureated with double-lines watermark figures



3098

Gibbons

Start price
in CHF Start price
approx. €

- 3098** 1 d. orange-vermilion on yellowish wove wmk'd paper, an unused horizontal pair, positions 32-33, ample to large margins all round with portion of adjoining stamp at left, of good colour and large part og. Rare $G_i = £ 900+$.

83

*

300 (€ 270)



3099



Charles Lathrop Pack

- 3099** 1 d. orange-vermilion on yellowish wove wmk'd paper, position 38, a fine used example with four margins and part of adjoining stamp at base, tiny scissor incision at upper right, used on 1854 cover to Surrey Hills tied by Sydney mute obliterator with framed '2 / O CLOCK' handstamp at left. Reverse with 'Sydney / Crown / New South Wales' datestamp (Jan 13) in black. An attractive local cover.

Provenance: Collection Charles Lathrop Pack, Harmers, New York, Dec 1944 or 1945.

83



150 (€ 135)

- 3100** 1851/55: Laureated issue, the used range on leaves with 2 d. blue (shades) with Plate I single examples (11) including a vertical and a horizontal pair, examples from the Worn Plate with single used examples (8), Plate II with single examples (2, one with superb '23' of Wollongong); 1854 wmk'd. 1 d. orange-red on 1856 local cover, Plate III 2 d. ultramarine singles (2) and a used strip of three-this last being ex John Boker-and a single 3 d. yellow-green. A delightful group (27 items).

52-84

250 (€ 225)



'Bow Tie' variety



3101



3102

'WALE for WALES'
plate variety

- 3101** 2 d. Prussian blue on wmk'd paper, Plate III, position 44, a fine unused example with close to enormous margins all round, of fresh colour showing the 'Bow Tie' plate variety; without gum, a scarce and attractive stamp $G_i = £ 350$.

85

*

150 (€ 135)

- 3102** Laureated 3 d. yellow-green on wmk'd paper, positions 43-44-45, a fine used horizontal strip of three, large margins all round, scissor cut between first and second stamp at top but showing portion of adjoining stamp at left, position 43 showing 'WALE' for 'WALES' plate variety, lightly cancelled in black (cert. Alcuri); also a single example from position 47 showing the 'WACES for WALES' plate variety, fine used with the variety clear $G_i = £ 330+$.

87+ 87a

150 (€ 135)

1854/59, Garter

- 3103** Plate Proofs, the selection (16) with 5 d. value in shades of blue on card paper with two single examples, a strip of three and a creased block of four; 5 d. value in shades of green on medium paper with two singles and two horizontal pairs, also a thin paper Proof in bright purple. Some with thins but a most attractive selection.

Gibbons

Start price
in CHF Start price
approx. €

88 Proofs 田*/*(*) **200** (€ 180)



3104

- 3104** 5 d. dull green, imperforate, an unused example of rich colour, good even margins all round, variety 'Inverted & Reversed Watermark', fresh and very fine with part og. Unlisted by Stanley Gibbons, an exceptional stamp and extremely rare. Cert. RPSV (1978) Gi = £ 1'300+.

88w

*

600 (€ 540)



3105

- 3105** 1854/59: Perkins Bacon Cancellation Trials, 6 Proof examples of the Garter 6 d. value on card paper, all with diagonally waxed corners, printed in brown, red-brown, deep blue, pale blue, indigo-blue and orange-red; without notations and applied to wove paper backing. Fresh and fine, an unusual and rare group.

Provenance: Spink, London, 9 Nov 2006, lot 1962.

89 Trials

(*)

750 (€ 675)



3106



3107

- 3106** Perkins Bacon Proof for Garter 6 d., each with waxed corner, each printed in rose-lake shade on bleuté paper, and glued to paper, ex the Perkins Bacon archives. Rare and most unusual Proof.

89 Proof

(*)

300 (€ 270)

- 3107** Perkins Bacon Proof for Garter 6 d. a superb block of four on thick paper, each with waxed corner, printed in bright orange-vermilion. Rare and most unusual Proof. Cert. BPA (1988).

89 Proof

田(*)

300 (€ 270)



3108



3111

Gibbons

Start price
in CHF Start price
approx. €

- 3108** 6 d. greenish grey, imperforate, a magnificent unused horizontal pair with huge margins all round, ironed vertical bend in right hand stamp that does not affect the appearance, large part og. A charming multiple. Cert. BPA (2018) Gi = £ 3'200.

90

*

500

(€ 450)



3109



Bishop
Robert William Willson
(1794-1866)

- 3109** 6 d. grey, imperforate, a fine used example with fine to large margins all round, used on 1859 cover from Sydney to a Bishop in Tasmania tied by Sydney duplex (April 21) in black and by framed 'SHIP LETTER INWARDS FREE' datestamp (April 28) in red. Church crest on reverse and docketing on front 'From the Archbishop, Extract. Admonition from Rome'. A fresh and attractive cover.

94

✉

200

(€ 180)



3110

- 3110** 1854/55: Plate Proofs for 8 d. value, imperforate on thick unwatermarked paper, a sheet marginal block of four printed in yellow and a sheet marginal block of four printed in blue, this last with lower pair horizontally creased and some natural paper ageing. A scarce pair, especially so in multiples.

97 Proofs

田(*)

400

(€ 360)

- 3111** 8 d. golden yellow, imperforate, a fine used example with large margins and portion of adjoining stamp at left, of excellent vibrant colour and lightly cancelled in black. A lovely example of a rare stamp. Cert. RPSL (1976) Gi = £ 1'400.

97

350

(€ 315)



3112

- 3112** 8 d. dull yellow-orange, used example with fine to large margins all round, lightly cancelled in black. A scarce stamp. Cert. BPA (1938), A. Diena (1967) Gi = £ 1'300.

Gibbons

Start price
in CHF

Start price
approx. €

98

350

(€ 315)



3113

- 3113** 8 d. dull orange-yellow, imperforate, a very fine used example with large margins all round, used on large piece of 1859 cover to New York endorsed 'per Northam', tied by 'Sydney' duplex (July 14) in black. Part New York arrival in black adjacent, a rare and fine piece. Cert. BPA (1949) Gi = £ 1'300.

98

△

350

(€ 315)



New York City Hall



3114

- 3114** 1854/59: Perkins Bacon Die Proof for the Garter 1 s. value, printed in black on thin white wove paper, slight hinge thin trace at top, otherwise extremely fine and very rare.

99 Proof

(*)

350

(€ 315)



3115



Queen Victoria



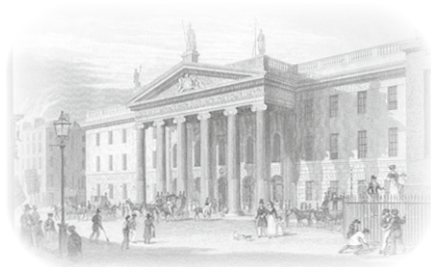
3117

- 3115** 1 s. pale red, imperforate, a used block of eight, marginal from top of sheet with good to huge margins all round, lightly cancelled by (probable) "71" numeral obliterations of Tamworth in black. Horizontal creases on fifth and sixth stamps not affecting the appearance of a scarce and most attractive multiple *Gi* = £ 550+.
Provenance: Collection Charles Lathrop Pack, Harmers, New York, 6-15 Dec 1944, lot 1278.

Gibbons		Start price in CHF	Start price approx. €
100	田	250	(€ 225)



3116



Dublin Post Office

- 3116** 1 s. pale red, imperforate, a fine used example with large margins all round, slightly creased at top right, used on 1859 cover to Dublin, Ireland tied by NSW oval obliterator in black. Reverse with Sydney despatch datestamp (Aug 15) and Dublin arrival (Oct 15). An attractive single franking. Cert. BPA (2018).
- 3117** Garter 1 s. brownish-red, a fine unused example with ample to large margins all round, pronounced watermark showing through, fresh and fine without gum. A very rare stamp *Gi* = £ 4'250.

100	✉	150	(€ 135)
101	(*)	750	(€ 675)

1856/59 (Jan.), Registration



3118

Gibbons
Start price in CHF Start price approx. €

3118 (6d.) dull vermillion & indigo, imperforate Proof without wmk., on thick paper, large margins at top and at right, close but clear at other two sides, minor thin spot, note that none of the usual faint blue guidelines around NEW SOUTH WALES are present on the Proof.

102 Proof (*) 350 (€ 315)



General Post Office, Brisbane



3119

3119 (6d.) vermillion & Prussian blue, a huge margined example and 1854/59 Garter 6 d. slate imperforate, large margins, used on 1858 registered cover from Brisbane (Queensland) to Newcastle, UK, endorsed 'per first mail steamer'. Each stamp neatly tied by dotted "95" numeral obliterator of Brisbane with REGISTERED / BRISBANE handstamp in black at left and despatch cds (March 22) and Sydney transit cds (March 29) on reverse. Handstruck 'd6' (pence) marking applied on arrival with oval 'London / Registered' datestamp (June 21) on front in red. A charming and extremely rare usage.

102+ 89 ✉ 1'000 (€ 900)

1856 (April - Oct.), Diadem



3120



3121

- 3120** Perkins Bacon Diadem Proof, from a small Plate of six impressions (2 x 3), recess printed (engraved by Frederick Heath) in lemon chrome shade on wove paper, each stamp with waxed lower left corners to prevent possible re-use and the value and 'Postage' erased from the Transfer roller before laying down, undated by with "LC" at base indicating the "Lemon Chrome" colour; together with a further pair in a dark shade with "D.P." in manuscript (Dutch Pink) and a further horizontal pair in dull red. A scarce group.
- 3121** Perkins Bacon Diadem Proof, from a small Plate of six impressions (2 x 3), recess printed (engraved by Frederick Heath) in a Rose Lake shade on vertically laid paper, each with waxed corners at lower left to prevent possible re-use and the value and 'Postage' erased from the transfer roller before laying down, marked "2" in manuscript at base. Rare and most attractive. *Note: A.G. Rigo de Righi believed these to have been laid down in 1870 as Colour Charts for the proposed Great Britain 1870 1½d. lake definitive stamp. The Reginald M. Phillips collection at the National Postal Museum contains 12 of these Proofs in varying colours on varying types and colours of paper. The example offered here is very close in shade to the issued 1½d. adhesive.*

		Gibbons		Start price in CHF	Start price approx. €
Proof	田(*)			400	(€ 360)
Proof	田(*)			750	(€ 675)



3122

- 3122** Perkins Bacon Diadem Plate Proof for 1 d. value on bleuté thin paper, an imperforate block of eight (4 x 2), marginal from top of sheet in brown. Minor bends but a very attractive multiple.

Proof	田(*)	250	(€ 225)
-------	------	------------	---------



3123

- | | | Gibbons | | Start price
in CHF | Start price
approx. € |
|-------------|--|------------------|------|-----------------------|--------------------------|
| 3123 | Perkins Bacon Diadem Proofs, six individual examples, recess printed (engraved by Frederick Heath) on wove paper, each stamp with waxed lower left corners to prevent possible re-use and the value and 'Postage' erased from the Transfer roller before laying down, imperforate in brown, green, rose, mauve, yellow and red. A fine and scarce group. | Proof | (*) | 200 | (€ 180) |
| 3124 | 1854/59: Collection with Plate proofs of 6 d. value imperforate in pale grey-brown (2) and in black (2), 5 d. dull green unused and used, 6 d. grey / brown (shades) with large margined used examples (19) including a pair on piece; Plate Proofs of the 8 d. value in blue (4, two are 'used'); Plate Proofs of the 1 s. value in rose-red (3) and rare individual head-plate Proof in green; 1 s. values used (3) including one with '8' watermark error. A scarce selection (36 items). | 88-101
Proofs | △ | 400 | (€ 360) |
| 3125 | Perkins Bacon Diadem Plate Proofs and Trials, the collection on leaves with 1 d. orange vermilion optd SPECIMEN in black and two examples on Crown over NSW paper, Plate Proof in black and unused examples on blued paper including a strip of three; 2 d. Plate Proofs in black with pair, blocks of four (2), six and eight; 2 d. blue on wmk'd '2' paper optd. SPECIMEN in black, 3 d. value with Plate Proof in black and in green (10). A fine and very scarce group (29 items). | Proof, Trials | ⊞(*) | 300 | (€ 270) |



3126



3127

- | | | | | | |
|-------------|--|---------|---|------------|---------|
| 3126 | 1 d. orange-vermilion, privately rouletted from the issued imperforate, a fine unused example of good colour and large part og. A rare stamp. Cert. RPSL (1979) Gi = £ 350++. | 107 var | * | 200 | (€ 180) |
| 3127 | 1 d. orange-vermilion, an unused horizontal pair, privately rouletted by James Dutton, positions 16-17 on the unique block of 24 subjects which was split up, some oxidisation and with some creasing not detracting from the appearance, fresh and fine with large part og. Scarce - sold together with the original lot description and a colour copy of the original block. Provenance: Robson Lowe, 6 Dec 1945, lot 661. | 107 var | * | 200 | (€ 180) |



Alfred H. Caspary



3128



John R. Boker Jr.

- | | | | | | |
|---|---|-----|----|------------|---------|
| 3128 | 1 d. orange-vermilion, imperforate, an unused block of four from the lower left corner of the sheet, positions 97-98/109-110, of good colour and with the scrolling in the sheet margin at left. Two diagonal creases and another affecting margin only, nevertheless a remarkable and rare multiple with large part og. Gi = £ 1'300+. | 107 | ⊞* | 750 | (€ 675) |
| Provenance: Collection Alfred H. Caspary, Harmers, London, 6-9 Oct 1958, lot 191.
Collection Josiah K. Lilly, Harmers, New York, 15-16 May 1968, lot 191.
Collection John R. Boker Jr., Harmers, London, 14 April 1981, lot 40. | | | | | |



3129

Gibbons

Start price
in CHFStart price
approx. €

- 3129** Die Proof for the 2 d. value in black on India paper applied to thick card, original completed state of the Die, minor finger prints and ageing but an extremely scarce and attractive Proof.

110 Proof

(*)

300

(€ 270)



3130

- 3130** 2 d. blue, Plate I, imperforate used with 1856 Registration (6d.) vermilion & Prussian blue on 1858 registered cover from Maryborough (now Queensland) to Sydney, tied by dotted "96" obliterations. Cover endorsed at upper left '*per Steamer Wacatah, 1/9/58*' in manuscript and unfortunately some fool has for the most part erased the endorsement "*Registered*" and the docket number at left. Reverse with 'Maryborough / NSW' cds and two Sydney arrival datestamps (Sept 6) in black. Cert. A. Diena (1963).

112+ 102

**250**

(€ 225)



3131



3132

- 3131** 2 d. pale blue, Plate I, imperforate, a fine unused corner marginal pair from lower right of sheet, positions 119-120, minor bends at top, of fine delicate colour and large part somewhat browned og. Scarce Gi = £ 525.

Provenance: Collection 'España', Harmers, London, 23 March 1984, lot 2463.

113

*

150

(€ 135)

- 3132** 2 d. blue, Plate II, imperforate on wmk'd paper, an attractive used horizontal strip of three, large to ample margins all round, very lightly cancelled in black. A rare multiple Gi = £ 195+.

114

150

(€ 135)



3133

Gibbons

Start price
in CHFStart price
approx. €

- 3133** 3 d. dull green, imperforate, the extremely rare error on wmk'd "2" paper, a superb used example with large margins all round, of excellent colour and lightly cancelled in black. Exceptional for this great rarity - just 19 examples are recorded (it should be noted that Burrus, Caspary, Dale-Lichtenstein, Hind, Slade Slade and Wiggins had no examples of this stamp) and the examples in Ginger, España and White are in much worse condition than the example offered here. Finer than the exceptional Isleham example, this is, without doubt, one of the top examples recorded for overall quality and beauty. Cert. RPSL (1939) *Gi* = £ 3'750. *Provenance: Collection G. H. Boucher.*

117a

2'000 (€ 1'800)

- 3134** Diadem issue collection with 1 d. orange-vermilion (shades) unused (3) and used examples (49) including eighteen pairs and two strips of three, 2 d. blue (shades) with unused (2) and used examples (15) including 2 d. pale blue with marginal used example, pair and a strip of three with central stamp showing small "2" watermark clearly and single usages on covers (2); 3 d. green (shades) with used examples (8) including two pairs. A fine lot *Gi* = £ 2'500+.

107/117

**500** (€ 450)

1860/72, Diadem, Perf. 12



3135

- 3135** 1 d. orange-red, perf. 12, an attractive unused horizontal pair, marginal from top of sheet (imperf. between stamp and margin), of excellent fresh colour, one stamp with horizontal wrinkle, unused without gum. Rare and most appealing multiple *Gi* = £ 650+.

131

(*)

200 (€ 180)

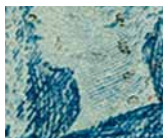
3136

- 3136** 1 d. scarlet, perf. 12, a horizontal pair, marginally imperforate at left, used on 1861 second sheet of entire letter to Sydney, tied by 'Raymond Terrace' datestamps (Oct 28), reverse with 'Limeburner's Creek' cds (same day) and Sydney arrival cds. File fold away from adhesives, an attractive cover.

132

**100** (€ 90)

Hunter's River, Raymond Terrace



"Major (Second) Retouch"
below the Queen's chin
and around the neck



3137



3138

Gibbons

Start price
in CHF Start price
approx. €

- 3137** 2 d. pale Prussian blue, Plate II, Retouched, perf. 12. A fine used vertical pair, positions 57/69, with watermark "2" inverted, the upper stamp showing the "Major (Second) Retouch" especially apparent below the Queen's chin and around the neck. Rough perfs., fortunately lightly cancelled leaving the Retouch clear. An extraordinary and very rare positional multiple Gi = £ 425+.

136bw

500 (€ 450)

- 3138** 1 s. rose-carmine, perf. 12, a wonderful unused vertical pair, marginal from left of sheet, of brilliant vibrant colour, near perfect centering for the issue, showing the imperforate sheet margin and the scrolling at left. Fresh and extremely fine, with large part og., the lower stamp being unmounted og. A magnificent multiple Gi = £ 2'800+.

Provenance: Collection William Frazer, Spink, London, Sept 2003, lot 135.

Collection 'Alvarado', Spink, London, 19 May 2010, lot 314.

153

*/**

1'500 (€ 1'350)

Main Street through Tenterfield



3139

- 3139** 1 d. scarlet horizontal pair used with diagonally bisected Diadem 1 s. rose-carmine for correct 8 d. rate, used on January 1862 cover sent registered to Tenterfield, with manuscript "Haste" at top and docket number '467', tied by '132' numeral obliterations in black. REGISTERED / GLEN INNES handstamp at lower left in black and reverse with Glen Innes cds (Jan 31), Dundee (Feb 1) and Tenterfield arrival cds (Feb 1) all in black. The addressee's name excised, patched and redrawn but of great rarity being the sole recorded bisected usage. A famous cover. *Cert. BPA (2018)*

Provenance: Collections Charles Jewell, Wilkins and Bolton.

153 var+

132

**1'000** (€ 900)

Perf. 13



J. R. W. Purves



3140

Gibbons

Start price
in CHF Start price
approx. €

- 3140** **New South Wales / Victoria Combination Cover** 1860/72: NSW Garter 6 d. purple, perf. 13, used in combination with Victoria 1862/63 4 d. rose and 6 d. deep blue, on 1867 mourning cover from Deniquilin (on the Edward River on the border with Victoria) to London tied by sunburst "51" numeral obliterator in black and by Melbourne barred obliterations in black. Back flap missing but with despatch of 'Deniquilin' cds (Sept 22) and London cds (Nov 16) in red. A superb and extremely rare cover.

Provenance: Collection J. R. W. Purves, RL, London, 13 May 1981, lot 631.

164

**500** (€ 450)

3141

- 3141** 6 d. purple, Plate II, perf. 13, a superb unused block of twelve (6 x 2), lower left stamp with corner missing, otherwise fresh and very fine, of good centering and rich colour, large part og. with some unmounted og. A scarce and most attractive multiple Gi = £ 1'350+.

165

**400** (€ 360)



3142

Gibbons

Start price in CHF Start price approx. €

3142 New South Wales / Victoria Combination Cover 1860/72: NSW Garter 6 d. purple, perf. 13, used in combination with Victoria 1862/63 6 d. black, on 1865 cover from Moulamein (on the Edward River on the border with Victoria) to London tied by sunburst "265" numeral obliterator in black and by Melbourne barred obliterator in blue. Back flap missing but with despatch of 'Moulamein' cds (Sept 20), Deniquilin (Sept 21), Melbourne (Sept 23) in blue and London cds (Nov 16) in red. A superb and extremely rare cover.

165



750 (€ 675)



3143

3143 8 d. bright yellow, perf. 13, the famous unused vertical strip of four, marginal from left of sheet, some minor splitting, of wonderful fresh colour and superb og. Extremely rare and fine Gi = £ 1'800+.

*Provenance: Collection William Frazer, Spink, London, Sept 2003, lot 142.
Collection 'Alvarado', Spink, London, 19 May 2010, lot 370.*

167c



1'000 (€ 900)

3144 Diadem issue, with 6 d. brown, perf 12 used (2), 6 d. violet unused and used, 1 s. brownish red used, perf. 13 values with 1 d. pairs (2), 3 d. yellow green in an unused pair, 5 d. in a used pair, 6 d. reddish purple unused (3 shades) and used examples, 1 s. rose-carmine unused (2), 8 d. yellow-orange unused and used etc. Generally fine, a scarce group (20 items) Gi = £ 2'500+.

143-167b



400 (€ 360)



3145

Gibbons

Start price
in CHF Start price
approx. €

- 3145 New South Wales / Victoria Combination Cover** 1860/72: NSW Garter 1 s. rose carmine, perf. 13, used in combination with Victoria 1863 4 d. deep rose in a horizontal strip of three, on 1865 cover from Moulamein (on the Edward River on the border with Victoria) to London tied by sunburst "265" numeral obliterator in blue and by Melbourne barred obliterator in black. Back flap missing but with Deniquilin cds (Oct 22), Melbourne (Oct 24) in blue and London cds (Dec 22) in red. A few minor faults but a superb and extremely rare cover.

168

**500** (€ 450)

3146



General Post Office, Sydney

- 3146** 6 d. violet (2) and 1 s. rose-carmine, all perf. 13, used on 1867 cover to London endorsed 'via Bombay & Marseilles' with 1863 2 d. pale blue all tied by barred 'GPO' obliterations in black. Reverse with Sydney (May 24) despatch cds in black and London (July 20) cds of arrival in red. A most attractive mixed issue three colour franking.

166+ 168+

192

**250** (€ 225)

1861/88, Corbould



Edward Henry Corbould
(1815-1905)



3147



3148

- 3147** Die Proof for Courbould 5 s. in black on thin cream paper (52 x 40 mm.), mounted on inset card (66 x 57 mm.), some minor aging which does not detract from a lovely Proof of great scarcity.
Provenance: Collection A. Leslie Leon, RL, London, 14 March 1978, lot 219.
- 3148** 5 s., a Plate Proof block of four printed in grey-black on thick soft white card paper. Fresh and fine, a rare Proof.
*Provenance: Collection George Ginger, RL, London 5-6 Dec 1945, lot 730.
Sotheby's, London, 15 Dec 1995, lot 413.*

		Gibbons	Start price in CHF	Start price approx. €
174 Proof	(*)		500	(€ 450)
174 Proof	田(*)		750	(€ 675)



3149

- 3149** 1 d. pale red, perf. 13, wmk. single line 'I' inverted, a fresh and fine unused block of eight, marginal from top of sheet, the watermark as usual permeating the stamp paper, some trivial splitting, superb large part og. A wonderful and rare multiple Gi = £ 880+.
Provenance: Collection William Frazer, Spink, London, Sept 2003, lot 152.

195	田*	250	(€ 225)
-----	----	-----	---------

1862/69, De La Rue



Office of De La Rue



3150



3151

- 3150** De La Rue Die Proofs (2) for the 10 d. value in black on white glazed cards, the completed Die, struck with AFTER HARDENING and dated 'May 2, 1867' in black and a similar, slightly darker Proof in black, struck before the Die was sent to New South Wales in March 1870 and dated at upper left 'Jan 10, 1870' in black. A fine and rare pair.
- 3151** De La Rue Die Proofs (2) for the 10 d. value in black on glazed white card, and in lilac on glazed white card, this last with slight rubbing but a fresh and fine pair.

Gibbons		Start price in CHF	Start price approx. €
205 Proofs	(*)	250	(€ 225)
205 Proofs	(*)	200	(€ 180)



3152



3153

- 3152** De La Rue Die Proof for 10 d. value, printed in bright mauve on white glazed card, with manuscript at upper left '6d. Postage' and thus probably produced in 1871 as a guide to the colour for the January 1872 6 d. value. Fine and unusual Proof.
- 3153** 10 d. lilac, perf. 13, an unused horizontal strip of four of vibrant colour, sheet margin at top with watermark SOUTH WA, vertical crease in wing margin only but a scarce and most attractive multiple Gi = £ 200+.

205 (216) Proof	*	150	(€ 135)
205	*	100	(€ 90)

1871/1902, De La Rue



3154



3156

Gibbons

Start price
in CHF Start price
approx. €

3154 New South Wales & Victoria Combination Cover 1871: NSW 1 d. dull red, perf. 13, a horizontal pair used in combination with Victoria 1872 6 d. Prussian blue (Gi 145a) used on 1873 cover to Ludlow, England endorsed 'per R. M. S. S. Baroda' tied by '398' numeral obliterations of Wanganella in black. Reverse with Wanganella cds (May 20), Denilquin cds (May 20) and Melbourne cds (May 21). Slight opening tear at top but a rare and most appealing cover.

207



300 (€ 270)



3155

3155 De La Rue Die Proofs (2) for the 6 d. value in ochre-yellow on glazed white card, and in bright mauve (issued colour) on glazed white card, a fresh and fine pair.

216 Proofs



200 (€ 180)

3156 2 d. Prussian blue, perf. 11x12, two examples, 6 d. mauve, perf. 10x12 and 8 d. yellow perf. 12, all used on 1886 cover endorsed 'per S.S. Orient' from Sydney to Lindau, Germany, all tied by 'Sydney / NSW' in black (Oct 26). Reverse with Lindau arrival cds (Dec 4). An attractive cover.

225g+

235c+ 236a



150 (€ 135)



3157

3157 3 d. yellow-green perf. 10, in a top right corner marginal strip of six fine unused with superb og., and 5 d. bright green perf. 10, in a marginal strip of four, also fresh and fine with large part og. An attractive pair Gi = £ 300+.

226+ 231



100 (€ 90)



3158



3159

- 3158

8 d. yellow, wmk. Crown/NSW inverted, perf. 10, an unused block of nine (3 x 3), marginal from left of sheet, of excellent rich colour and freshness, minor wrinkles of no significance, superb large part og. with five stamps unmounted og. A very rare multiple in wonderful quality *Gi* = £ 1'800+.
- 3159

8 d. yellow, wmk. Crown/NSW, perf. 12, a fine unused block of four, of excellent fresh colour, trivial age spot on superb, large part og. Rare and most attractive multiple *Gi* = £ 1'200+.

Gibbons		Start price in CHF	Start price approx. €
236	田**	500	(€ 450)
236a	田*	300	(€ 270)

1885/94, Stamp Duty



3160



The Royal Mint in Sydney

- 3160

1885/86: Stamp Duty £ 1 lilac & claret, wmk. NSW sideways, overprinted POSTAGE in blue, perf. 12 x 10, the extraordinary unused block of four in a lovely shade, marginal from right of sheet, the block in two horizontal pairs but nevertheless of stunning appearance, typical somewhat blunted perfs., superb unmounted og. A magnificent rarity *Gi* = £ 40'000.
Provenance: Collection Rod Perry, DF, Geneva, 16-21 Nov 1987, lot 20670A.

242	田**	7'500	(€ 6'750)
-----	-----	-------	-----------

1888/89, Centenary of New South Wales



3161



3162

		Gibbons		Start price in CHF	Start price approx. €
3161	2 d. Prussian blue with 'Emu' vignette, wmk. Crown/NSW, a fine unused imperforate pair, fresh and very fine, superb og. Gi = £ 375.	254a	*	150	(€ 135)
3162	2 d. Prussian blue with 'Emu' vignette, wmk. NSW, perf. 11x12 and imperforate at right, an unused block of four from right of sheet, of good colour, one stamp with corner bends, fresh and fine, large part og. Gi = £ 440+.	260	田*	150	(€ 135)



3163

3163	20 s. cobalt-blue, wmk. '5/-' sideways, perf. 10, an unused example, well centred and of good colour, large part og. A scarce stamp: just 2'500 printed. Cert. Ceremuga (2018) Gi = £ 750.	262	*	200	(€ 180)
-------------	--	-----	---	------------	---------



3164



3165

3164	'Map of Australia', 5 s. mauve, wmk. '5/NSW', perf. 10, a fresh unused horizontal pair, marginal from base of sheet, well centred for this issue, minor wrinkles on unmounted og. Scarce and attractive Gi = £ 750+.	263d	**	200	(€ 180)
3165	'Map of Australia', 5 s. bright mauve, perf. 11, an unused example centred to top, of fresh colour with part NSW imprint in margin at base, large part og. Gi = £ 375.	263da	*	120	(€ 110)

Later Issues from 1890



3166

Gibbons

Start price
in CHF Start price
approx. €

3166 1890 (Dec): Imperforate Plate Proof for the allegorical 2½ d. value, printed in orange-red and mounted on thick card, with issued stamp for comparison. Scarce.

265 Proof

(*)

120 (€ 110)

3167 1872/92: Six registered covers to UK with five from same correspondence from Tamworth to Grasmere or Liverpool, franked at 5½ d., 6½ d., 10 d. (2), 1 s., 1/4 d. rates bearing 27 adhesives; with an interesting range of usages showing the gradual rate reduction between the two countries.

✉

150 (€ 135)

3168

3168 1897: Cover to Sydney franked initially by rouletted Australian New Hebrides Co. 2 d. blue & red-brown tied by PORT VILA cds (Aug 4) and over-lapped by NSW 1890 2½ d. ultramarine tied by "New Hebrides" cds. Sydney arrival (Aug 13) on reverse of a scarce combination cover.

265

✉

120 (€ 110)

3169 1891 (Jan): Provisional Surcharges, the specialised collection of the three values, with ½ d. on 1 d. grey in unused blocks of four, six and twelve; two complete panes of 60 unused (ex Ron Butler RDP), 7½ d. on 6 d. brown with 'Thomas Richards' monogram and 'GPO / NSW' blocks of six unused and four further multiples unused; single optd. "Specimen" in blue, 12½ d. on 1 s. red unused (10) and Plate blocks of six and 12 unused, single optd. "Specimen" and three covers. A fine lot.

266/68

✉田

200 (€ 180)

3170 1891 (July): 3 d. (yellow)-green, wmk. '10', in a fine unused block of 20 (4 x 5), marginal from base of sheet, and 3 d. dark green in a fine unused block of nine; fresh and fine, large part og. Gi = £ 350+.

269/270

*/**

100 (€ 90)



3171

- 3171** 1897: ½ d. slate, perf 12x11½, an unused block of four, marginal from top of sheet, the left hand vertical pair each showing the variety 'Imperforate on three sides', slight fold between stamp and margin and some trivial aging otherwise fresh and very fine, a rare multiple displaying the error to it's best advantage Gi = £ 3'400+.
- 3172** 1892/1899: ½ d. grey (shades), the collection on leaves with range of unused multiples in the three primary shades, with blocks of four, imprint strip of six, block of ten, and two panes of 60 in grey (ex collection Ron Butler RDP), 1897 ½ d. slate in blocks of four, 1899 ½ d. bluish green in a block of four and a pane of 60 unused, together with usages on registered covers (2).

Gibbons		Start price in CHF	Start price approx. €
272c	田*	1'000	(€ 900)
271/273	田*/**	150	(€ 135)

1894/1904: Stamp Duty overprinted POSTAGE



3173



3174

- 3173** 10 s. violet & claret, overprinted POSTAGE in blue (with 'jump' in overprint leaving slight doubling), wmk. NSW type 59, perf. 12x11, a fine unused horizontal strip of five, marginal from top of sheet, of excellent fresh colour, two left hand stamps with diagonal crease not detracting from appearance, somewhat wrinkled large part og. A scarce and most attractive multiple Gi = £ 1'750+.
- 3174** 10 s. violet & rosine on chalk surfaced paper, overprinted POSTAGE in blue, wmk. NSW type 59, perf. 12x11, a fresh unused example of superb colour, large part og. Cert. BPA (1980) Gi = £ 375.

275b	*	400	(€ 360)
277b	*	150	(€ 135)

1897 (June), Diamond Jubilee and Hospital Charity

Gibbons

Start price
in CHF Start price
approx. €

- 3175** 1 d. (1 s.) green & brown, a fine unused block of twelve from the lower right corner of the sheet of 30 subjects, fresh and fine appearance, some bends across perforations and minor separation, typical browned og. A scarce large multiple, believed to be the third largest recorded Gi = £ 600.

Note: Only one complete sheet of 30 subjects (5 x 6) from the 1'336 sheets printed of this value is still intact.

280 */** **150** (€ 135)

Later Issues from 1897



3176

- 3176** 1897/99: 1 d., 2 d. and 2½ d., a fine composite Die Proof (1 d. and 2 d. Die I), imperforate, printed in deep myrtle-green on glazed white paper, 145x95 mm., fresh and very fine. A scarce and most attractive Proof.

288+ 292+
295 (*) **150** (€ 135)



3177

- 3177** 1897: Re-Issue 5 s. reddish-purple, wmk. '5/-', perf. 11½, in a foliate marginal block of four, of fresh vibrant colour, typical slight wrinkling, superb large part og. A scarce and most attractive multiple.

297c 田* **120** (€ 110)



3178

Gibbons

Start price
in CHF

Start price
approx. €

- 3178** 1897/99: Courbould 5 s. reddish-purple re-issue, perf. 11x11, an unused block of four, variety "Imperforate Between Vertically", of fine rich colour and superb appearance, fresh and very fine, large part og. An outstanding multiple, with just three blocks recorded of this extremely rare variety Gi = £ 19'000+.

Provenance: Collection John S. White, Spink, London 22 May 1997, lot 537.

297ca

田*

5'000 (€ 4'500)



3180



3179



3182

- 3179** 1899: 9 d. on 10 d. dull brown, unused horizontal pair of excellent colour, variety "Albino Surcharge" on each, fresh and very fine, superb og Gi = £ 550.
- 3180** 1903/08: Diadem 3 d. yellow-green, wmk. Crown/NSW (Type II), perf. 12, a remarkable unused block of twelve (3 x 4) of excellent colour, the four left hand pairs all showing variety "Imperforate Vertically Between", fresh and very fine, hinge remnants to protect the block, large part og. A splendid and rare multiple. Cert. BPA (1999) Gi = unpriced.
- 3181** Diadem 3 d. yellow-green, wmk. Crown/NSW (Type II) inverted, perf. 12x11, a remarkable unused pane of 60 stamps (6 x 10), with sheet margins on three sides, of wonderful 'Post Office' fresh colour, unmounted og. A lovely multiple in the foremost quality Gi = £ 600+.
- 3182** 1905/10: 2 d. deep ultramarine, perf. 12 x 11½, an unused block of four showing the 'WAG' circular monogram in top sheet margin, creased during printing with two left hand stamps partially "Imperforate Between" with misplaced perforations running diagonally through the stamp design. Traces of gum but largely unused, a most unusual and attractive multiple.

309b

*

150 (€ 135)

327ba+ 327b

田*

1'000 (€ 900)

327c

田**

200 (€ 180)

335 var

田(*)

150 (€ 135)

Postage Due



3183

Gibbons

Start price
in CHF

Start price
approx. €

- 3183** 1891/92: Postage Dues ½ d. yellow-green to 8 d. yellow-green, the part set of eight values, all on piece of album page, the ½ d. value sent in 1892 when issued later than the rest of the values, with SPECIMEN in black, the balance with each stamp handstamped "SPECIMEN." in violet (Bendon type NA2) upon receipt in Natal from the U.P.U. Some toning but a unique group. Cert. BPA (1981).

D1/D8 spec △(*) **300** (€ 270)

Official Stamps



3184



3185

- 3184** 1879/85: Official Garter 5 d. green, wmk. inverted, perf. 10, a fine unused block of 16 (4 x 4), marginal from right of sheet, fresh and very fine, superb og. with most unmounted og. A delightful multiple in pristine condition Gi = £ 400+.
- 3185** 1882/85: Official 4 d. red-brown and 4 d. dark brown, both shades in unused blocks, both perf. 10, the 4 d. red-brown in a vertical format block of six with upper left stamp showing 'O' in 'O.S.' sideways, large part og. with minor imperfections; the 4 d. dark brown in a block of four with Plate 4 in margin but with diagonal crease, large part og. Scarce Gi = £ 580+.

O7 田*/** **150** (€ 135)

O26+ O27 田* **150** (€ 135)



3186

- 3186** Official Diadem 3 d. yellow green and Garter 5 d. blue-green, each in superb unused horizontal strips of three, each overprinted "Specimen" in black. Fresh and very fine, superb og. or unmounted og. Scarce multiples and most attractive Gi = £ 225+.

Gibbons

Start price
in CHFStart price
approx. €O24as+
O29as

*

100

(€ 90)



3187

- 3187** 1887/90: Official 10 s. mauve & claret, perf. 10, a good used example of fine delicate colour, usual somewhat rough perforations, cancelled by part oval NSW cto handstamp in black. Extremely rare. Signed A. Diena Gi = £ 3'000.
- 3188** 1891 (Jan): Official 2½ d. ultramarine, perf. 11x12, a complete unused sheet of 120 subjects, all margins intact, folded down the interpanneau gutter with full 'CP' monogram, 'G. Pr. O. / N.S.W.' and '1890' in ultramarine at base. Note the 'Wide Spaced OS' on stamp 16 (Row 4/4) in each pane; fresh and fine with large part or mostly unmounted og. An unusual complete sheet Gi = £ 1'400+.
- 3189** 1879/92: Official Issues, the collection on leaves with 1879 1 d. salmon unused and used, 2 d. blue perf. 11 x 12 used with cert. RPSL (Gi O3d = £ 225), 1 s. black used (3), 1880/88 5 s. purple unused (2), 1882/85 1 d. orange perf. 10 x 13 used (cert. RPSL), unused and used paires showing Plate Flaws on 'N' of 'NEW', 2 d. blue in an unued block of ten, 3 d. green, 4 d. brown, 5 d. green unused and used range, 8 d. yellow in an unused block of four, 1 s. black in unused strip of six and block of four, 1888/90 1 d. lilac in an unused sheet of 120 and range of values to 5s. incl. multiples etc.

O37b

750

(€ 675)

O54 田*/**

200

(€ 180)

O2-O58 田田*

500

(€ 450)

Collections

- 3190** 1862/1890: Small collection balance with 1862/64 1 d. dull red unused, 1871/1902 9 d. on 10 d. red-brown in Plate Number 1 and 5 unused examples, 1882/97 1 d. orange-red, perf. 10 x 12 used (cert. RPSL), 8 d. yellow, perf. 10 in an unused horizontal pair, 1888/89 Centenary issue with 8 d. imperforate Colour Trials in grey and in yellow, 1 d., 2 d. and 4 d. values in unused blocks of 12, 1889 5 s. purple used, watermarked with value 1890 5 s. lilac unused (5) and used (5), 20 s. cobalt-blue unused (7) and used (7) with the differing perforations. A generally splendid and highly catalogued collection (56 items) Gi = £ 5'000+.
- 3191** 1897/1907: Collection on leaves with 1897 Diamond Jubilee 1 d. (1 s.) used, cut-down Proof of 1897/99 2½ d. value imperforate and a perf. block of four unused, Courbould re-issue 5 s. in an unused marginal pair and a marginal single together with three fine blocks of four; 1898/99 6 d. emerald in a block of six from right of sheet, 2 d. cobalt in an imperforate strip of three, 1905 20 s. cobalt-blue unused (3), 1905 9 d. unused (7), 1907 1 s. purple-brown in a marginal block of four etc. A fine and appealing collection (67 items).

186-265

*

1'000

(€ 900)

280-362 田田*

750

(€ 675)

QUEENSLAND

- Prior to 1859** Postal Service in the locality then known as the Moreton Bay District administered by New South Wales.
- 1859** Moreton Bay District separated from New South Wales as the Colony of Queensland on 10 December 1859.
- 1860** The first stamps printed from steel plates engraved by Perkins Bacon in London. Steel plates were then delivered to the Colony for further printings.
- 1866** First Lithograph plates for the 4d. and 5s. made by taking lithographic transfers from Perkins Bacon steel plates.
- 1876** General decision that Queensland should produce its own stamps. Electrotypes came into use for printing from 1879.
- 1880** Authorisation of Fiscal Stamps for Postal use.
- 1903** Printing from lithographic stones from transfers taken from recess plates.



View of Moreton Bay ca. 1855

1860, Imperforated



3192

Gibbons

Start price in CHF	Start price approx. €
-----------------------	--------------------------

- 3192** The Humphrys Chalon Head, a marvellous impression engraved in black inset into thick card, 74 x 87 mm., a superb frontispiece to any collection of British Commonwealth, a delightful Proof.

1 Proof

(*)

500

(€ 450)



3193

- 3193** 1 d. carmine-rose, wmk. Large Star, imperforate, a magnificent used example with huge margins all round and large portion of adjoining stamp at top, corner bend affecting the adjoining stamp only and otherwise of lovely appearance, neatly cancelled by sunburst "10" numeral obliterator in black. Cert BPA (1980) Gi = £ 800.

1

200

(€ 180)



3194



3195

- 3194** Perkins Bacon Plate Proof of the 2 d. value, engraved in black on thick paper, a superb block of four from top of sheet. Some light aging but a most attractive multiple.
- 3195** Perkins Bacon Plate Proof for 2 d. value, engraved in black on thick card paper, a superb corner block of six from upper left of sheet. Slight aging on reverse but a most attractive multiple.

2 Proof

田(*)

150

(€ 135)

2 Proof

田(*)

120

(€ 110)



3196



Maurice Burrus

Gibbons

Start price
in CHF Start price
approx. €

- 3196** 2 d. blue, wmk. Large Star, imperforate, a superb used horizontal pair, margins clear at lower right to huge margins on the other three sides, of fresh colour and lightly cancelled by dotted "87" numeral obliterator of Ipswich in black. An exquisite pair. Signed A. Diena, Giulio Bolaffi. Cert. BPA (1979) Gi = £ 3'600+.

Provenance: Collection Maurice Burrus, RL, 11 Feb 1964, lot 442.

2

1'200 (€ 1'080)



3197

- 3197** 6 d. green, wmk. Large Star, imperforate, a superb used example in a pale shade, ample to large margins all round and part of adjoining stamp at base, lightly cancelled in black. A very fine example of a scarce stamp. Signed Houtzamer Gi = £ 800.

3

400 (€ 360)

1860, Clean-cut perf 14-16, Watermark Large Star



3198

- 3198** 2 d. blue, wmk. Large Star, clean cut perf. 14-16, a used horizontal pair in a deep shade, lightly cancelled by oval obliterations in black. A charming multiple Gi = £ 220+.

5

150 (€ 135)



3199



3200

- 3199** 6 d. green, wmk. Large Star, clean cut perf. 14-16, an unused example of good colour, minor aging on perfs., large part somewhat redistributed og. A very rare stamp unused. Cert. Ceremuga (2018) Gi = £ 1'400.

6

*

300 (€ 270)

- 3200** 2 d. brown, wmk. Small Star, clean cut perf. 14-16 (perf. 15½), a fine unused horizontal pair, of fresh colour and large part og. Slight separation at top but a rare and most appealing multiple Gi = £ 1'500.

8

*

400 (€ 360)

1860/61, Clean-cut perf 14-16, Watermark Small Star



The Stamp Office, Somerset House



Rowland Hill



3201

Gibbons

Start price in CHF Start price approx. €

3201 1861 (Jan): REGISTERED (6 d.) olive-yellow, wmk. Small Star, clean-cut perf. 14 at Somerset House, the remarkable used example with bold part strikes of the Perkins Bacon "CANCELLED" obliterator in black, applied by favour of Perkins Bacon upon the request, in April 1861 by Ormond Hill who required copies of stamps, other than those of Great Britain for his collection. Perkins Bacon sent, in September 1861, six examples of each stamp held in stock, to Mr. Pearson Hill and asked him to forward four of the examples to Ormond Hill. The resulting fracas led to the termination of some of Perkins Bacon's Colonial contracts. A wonderful and choice example, perforations trimmed at right. Illustrated on page 56 in Peter Jaffe's handbook, just three of the six examples sent are recorded, one of which is housed in the collection of Her Majesty Queen Elizabeth II. Exceptional and of great rarity for the advanced Exhibitor and philatelic connoisseur Gi = £ 10'000.



3202

- 3202** 1 d. carmine-rose, wmk. Small Star, clean-cut perf. 14 at Somerset House, a fine unused example of exceptional colour, without gum. A rare and most attractive stamp Gi = £ 375.

Gibbons

Start price
in CHF

Start price
approx. €

12

(*)

180

(€ 160)



3203

- 3203** 1861 (July): 2 d. blue, wmk. Small Star, clean-cut perf. 14 at Somerset House, the remarkable re-joined vertical pair with bold strikes of the Perkins Bacon "CANCELLED" obliterator in black, applied by favour of Perkins Bacon upon the request, in April 1861 by Ormond Hill who required copies of stamps, other than those of Great Britain for his collection. Perkins Bacon sent, in September 1861, six examples of each stamp held in stock, to Mr. Pearson Hill and asked him to forward four of the examples to Ormond Hill. The resulting fracas led to the termination of some of Perkins Bacon's Colonial contracts. Peter Jaffe's handbook records just four of the probable six examples sent, one of which is housed in the collection of Her Majesty Queen Elizabeth II. A wonderful and choice pair, perforations trimmed at right. *Exceptional and of great rarity for the advanced Exhibitor and philatelic connoisseur* Gi = £ 19'000.
Provenance: Collection General Robert Gill, Baltimore, 1957.
Collection John Gartner, Melbourne, 1978.
Collection Noel Turner, 1989.

13

7'500 (€ 6'750)

3204

- 3204** 1 d. carmine-rose, wmk. Small Star, rough perf. 14-16, an unused block of four of excellent colour, one stamp with unobtrusive corner crease otherwise fresh and fine with superb og. A scarce and most attractive multiple Gi = £ 400+.

14

田*

250

(€ 225)



3205



3207

Gibbons

Start price
in CHF

Start price
approx. €

- 3205** 1 d. carmine-rose, wmk. Small Star, rough perf. 14-16, an unused block of eight (2 x 4) of rich colour and centred to left, fresh and very fine, superb quality with lower six stamps unmounted og. Gi = £ 800+.

14 田*/**

400 (€ 360)

3206

- 3206** 2 d. blue, wmk. Small Star, rough perf. 14-16, a fine used horizontal strip of three on 1864 entire letter endorsed 'per Telegraph' to Melbourne, tied by "QL" obliterations in black. Reverse with SHIP LETTER / QUEENSLAND datestamp (Oct 31) in black and Melbourne arrival cds in blue (Nov 8). A charming and scarce entire.

15 田*

250 (€ 225)

- 3207** REGISTERED (6 d.) orange-yellow, wmk. Small Star, rough perf. 14-16, an unused block of four of fresh colour, with large part og. and lower pair unmounted og. Scarce and very fine. Signed A. Diena Gi = £ 440+.

21 田*/**

200 (€ 180)

1862/67, No Watermark, printed by Thomas Ham



Thomas Ham



3208

Gibbons

Start price
in CHF Start price
approx. €

- 3208** 1 d. orange-vermilion, no wmk., rough perf. 13, a fine unused block of sixteen (4 x 4), of superb colour, fifteenth stamp with thin and one stamp with corner crease, fresh and fine, large part og. with twelve stamps unmounted og. A scarce multiple Gi = £ 1'750+.

Provenance: The 'Mayfair Find', Harmers, London, 9 Nov 1925 ex lot 67 or 68.

22 田*/**

500 (€ 450)



3209

- 3209** 2 d. pale blue, no wmk., rough perf. 13, a fine unused block of twelve (4 x 3), marginal from right of sheet, with additional row of horizontal perforations across the upper strip of four, of superb colour, fresh and very fine, large part og. An interesting off centre block demonstrating the problems Thomas Ham had with the perforation machine in Brisbane. Scarce Gi = £ 1'650+.

23 田*/**

400 (€ 360)



Queen Victoria



3210

Gibbons

Start price
in CHF Start price
approx. €

- 3210** 2 d. blue, no wmk., rough perf. 13, a lightly cancelled horizontal pair, with variety **"Imperforate Between Vertically"**, with the error possibly continuing at the right hand side where the margin is roughly separated and with slight bend at upper right, but with definite vertical perforations at left. A fine and enormously rare variety Gi = £ 15'000.
Provenance: Collection Ernest B. Lye.
Collection Leslie Digby Nelson, Grosvenor, London, 4 Oct 2012, lot 10.

24b

7'500 (€ 6'750)



3211

- 3211** 3 d. brown, no wmk., rough perf. 13, an unused block of six of good colour, third stamp with slight thin, otherwise fresh and very fine, large part og. A scarce multiple Gi = £ 720.

25

田*

200 (€ 180)



Early Rotary Perforating Machine



3212

Gibbons

Start price
in CHF

Start price
approx. €

3212 6 d. bright yellow-green, no wmk., rough perf. 13, a magnificent lightly cancelled used horizontal pair, variety "**Imperforate Between Vertically**" with portion of adjoining stamp at left roughly separated, and cut by scissors at right. A remarkable and extremely rare variety, the sole example mentioned in A. F. Basset Hull (RPSL, London, 1930) on page 101. A great rarity of Queensland philately Gi = £ 16'000.

Provenance: Collection J. H. Chapman.

Collection Ernest B. Lye.

Collection Leslie Digby Nelson, Grosvenor, London, 4 Oct 2012, lot 15.

27a

7'500 (€ 6'750)



3213

Gibbons

Start price
in CHF Start price
approx. €

- 3213** 1 s. grey, no wmk., rough perf. 13, a fine unused example of good colour, large part og. A scarce stamp Gi = £ 350.

29

*

100 (€ 90)

3214

- 3214** 3 d. brown, no wmk., rough perf. 12½ x 13, a fine unused block of twelve (4 x 3), of excellent fresh colour, first stamp with small fault at upper left corner and left stamps trimmed vertically, fresh and fine, large part og. with eight stamps unmounted og. A charming and rare multiple Gi = £ 1'170.

32 田*/**

300 (€ 270)

3215

- 3215** 1 d. orange-vermilion, no wmk., perf. 13, an unused block of fifteen (5 x 3), of excellent fresh colour, some minor tone spots not affecting appearance, fresh and very fine, large part og. with the lower twelve stamps unmounted og. A delightful and very rare multiple Gi = £ 1'800.
Provenance: Tommy Allen.

44 田*/**

750 (€ 675)

1866 (Jan.), Watermark QUEENSLAND / POSTAGE / STAMPS



3216

- 3216** 1 d. orange-vermilion, perf. 13, an unused horizontal strip of three, of good fresh colour, large part og. with heavy gum crack shows through on face, nevertheless a rare stamp in a multiple Gi = £ 600+.

Gibbons

Start price
in CHF Start price
approx. €

51

*

150

(€ 135)

1866/67, Lithographed, No Watermarks



3217

- 3217** 4 d. grey-lilac, First Transfer, no wmk., perf. 13, a fine unused block of six of excellent colour, well centred and large part og. with some reinforcement. An outstanding and very rare multiple in the foremost condition. Signed W. H. Colson Gi = £ 2'500+.

54

田*

1'000

(€ 900)



3218

- 3218** 4 d. lilac, Second Transfer, no wmk., perf. 13, a fine unused block of four of excellent depth of colour, each stamp overprinted SPECIMEN diagonally in black. Fresh and very fine, large part og.

55 spec

田*

150

(€ 135)

1868/74, Watermark Small Truncated Star



3219

Gibbons

Start price
in CHF Start price
approx. €

- 3219** 2 d. pale blue, wmk. Small truncated Star, Plate I, perf. 13, an unused irregular block of thirty eight marginal from top left of sheet, 7 x 5 plus vertical strip of three positions 8/20/32, each stamp diagonally overprinted SPECIMEN in black, some parts of the sheet margin creased or missing otherwise fresh and fine, large part og. A rare and most attractive large multiple.

61 spec 田*/**

500 (€ 450)

3220

- 3220** 2 d. pale blue, wmk. Small truncated Star, Plate I, perf. 13, an unused horizontal strip of seven, with QUEENSLAND in watermark, of fine colour, some perf. reinforcement, large part og. A scarce multiple Gi = £ 525+.

61

*

200 (€ 180)

3221

- 3221** 6 d. yellow-green, wmk. Small truncated Star, perf. 13, an unused block of four, of excellent fresh colour, some typical irregular perfs. at top but fresh and very fine, large part og. A scarce stamp in a multiple Gi = £ 1'000+.

68

田*

250 (€ 225)

1868/78, Watermark Crown over Q



3222

Gibbons

Start price
in CHF Start price
approx. €

- 3222** Reprint of 1868/74 2 d. deep dull blue, Plate II on watermarked Crown over Q paper, a fine horizontal pair of lovely appearance, variety "Imperforate Vertically Between". Rare and most unusual, see footnote under Gi. 82 *"One sheet of the 2 d. reprint is known to have the perforations missing between the fourth and fifth rows."*, thus only 10 pairs can exist thus. Fresh colour, gum scrape but part og. Scarce and attractive pair. Cert. BPA (1991).

81 Reprint

*

350 (€ 315)

3223



3224

- 3223** Perkins Bacon Plate Proofs, on unwatermarked white wove paper, struck for the first printing when the 'Crown over Q' paper was reintroduced, all in blocks of four, with 1 d. rose, 2 d. ultramarine, 3 d. brown, litho 4 d. yellow, 6 d. yellow-green and 1 s. mauve, largely fine with reasonable margins, a scarce group.

83-109
Proofs

田(*)

400 (€ 360)

- 3224** 1 d. orange-vermilion, wmk. Crown over Q, perf. 13, a fine unused block of four, variety "Imperforate", of clear to large margins all round, fine colour, unused without gum. Rare. Cert. BPA (1987) Gi = £ 1'600.

83a

田(*)

500 (€ 450)

3225

- 3225** 2 d. blue, wmk. Crown over Q, Plate II, perf. 13, a fine used horizontal strip of six, of excellent appearance and colour, used on 1876 cover to London cancelled by "210" numeral obliterator with 'DURINGA' cds below (March 24). Reverse with Rockhampton cds (March 25) and London arrival (May 22) in red. A charming and most attractive cover.

87

✉

200 (€ 180)

DURINGA HOTEL



3226

Gibbons

Start price
in CHF Start price
approx. €

- 3226** 1 d. pale orange-vermilion, wmk. Crown over Q, perf. 12, a fine used block of nine, of good colour and centering, cancelled in black. A scarce multiple.

95



Offer Gebot



3227

- 3227** 4 d. yellow, wmk. Crown over Q, First Transfer, perf. 12, an unused example of fine colour, with Plate variety 'R' of FOUR joined to outer oval frame, of excellent centering, unused without gum. A superb example of this rare stamp. Cert. BPA (1982) Gi = £ 1'600.

102

(*)

400 (€ 360)



3228

- 3228** 1 d. deep orange-vermilion and vertical pair of 4 d. buff-yellow, Transfer II, wmk. Crown over Q, perf. 12½, used on 1875 cover to London endorsed 'Overland Route', cancelled by "97" numeral obliterators in black. Reverse with Rockhampton cds (Oct 4) and London arrival cds (Nov 29) in red. Slight imperfections but multiples of the 4 d. are scarce on letter.

103+ 94



150 (€ 135)



3229



3230

Gibbons

Start price in CHF	Start price approx. €
-----------------------	--------------------------

- 3229** 6 d. green, wmk. Crown over Q, perf. 12, a fine unused block of six (3 x 2), of brilliant colour, fresh and very fine, large part or unmounted og. A lovely block. Cert. BPA (1999)
Gi = £ 1'350+.

105 田*/**

500 (€ 450)

- 3230** 6 d. apple-green, wmk. Crown over Q, perf. 12, a fine unused block of six (2 x 3), of fresh colour, the central pair with crease, but of delightful appearance with large part og. A rare multiple Gi = £ 1'650+.

107 田*

500 (€ 450)

Provenance: Collection Leslie Digby Nelson, Grosvenor, London, 4 Oct 2012, lot 71.



View of Freiberg, Germany



3231

- 3231** 1 d. orange vermillion in a horizontal pair and 6 d. green, both perf. 12, used on 1876 cover endorsed 'via Melbourne' to Freiberg, Saxony, Germany tied by "81" obliterations of Warwick with despatch datestamp at right (Feb 16) in black and also struck by straight line TOO LATE handstamp. 'London / Paid' cds in red on front (May 1). Reverse with Brisbane transit (Feb 17) and Freiberg arrival cds (May 4) in black. Some minor imperfections and envelope faults but a most attractive franking to an unusual destination. Cert. BPA (2018).

95+ 107

**400** (€ 360)



3232



3233

Gibbons

Start price
in CHFStart price
approx. €

- 3232** 2 d. blue, wmk. Crown over Q, Plate I, perf. $12\frac{1}{2}$, x 13, a superb used example of excellent colour, neatly cancelled by "53" numeral obliterator of Charleville. Superb and elusive stamp Gi = £ 350.

Provenance: Collection Leslie Digby Nelson, Grosvenor, London, 4 Oct 2012, lot 81.

115

150 (€ 135)

- 3233** 6 d. yellow-green, wmk. Crown over Q, Plate I, perf. $12\frac{1}{2}$, x 13 x 13 x 13, a superb used example of excellent colour, neatly cancelled in black. Superb and very elusive stamp Gi = £ 1'200.

Provenance: Collection Leslie Digby Nelson, Grosvenor, London, 4 Oct 2012, lot 84.

115a

350 (€ 315)

3234



3235

- 3234** 2 d. pale blue, wmk. Crown over Q, Plate I, perf. $12\frac{1}{2}$ x 13, a fine used horizontal pair, of excellent appearance, good colour, cancelled by "108" numeral obliterator Nanango in black, extremely rare: the cancellation leaving the Position 10 and 11 Plate variety (Horizontal Line in SE and SW corners respectively) clear, not seen by Basset Hull but on page 129 he remarks "The Line variety should also be found on Plate I printings of Crown Q paper...". Charming and scarce and possibly the sole example recorded to date on the compound perforation Gi = £ 700+.

Provenance: Collection Leslie Digby Nelson, Grosvenor, London, 4 Oct 2012, lot 87.

115

250 (€ 225)

- 3235** 2 d. blue, wmk. Crown over Q, Plate I, perf. $12\frac{1}{2}$, a fine used horizontal strip of four, of excellent colour and centering, lightly cancelled in black. A great rarity (probably the largest known used multiple) and absolutely superb. Cert. BPA (1989) Gi = £ 4'000+.

115b

400 (€ 360)

1879, No Watermark



3236

- 3236** 6 d. pale emerald-green, no wmk., perf. 12, a fine unused horizontal pair, of vivid colour, right hand stamp with tiny inclusion at right otherwise fresh and fine with large part og. A scarce stamp Gi = £ 800.

116

*

150 (€ 135)

1880, Lithographed



3237

- 3237** 2 s. blue, wmk. Crown / Q, rough perf. 12, a fine appearing horizontal pair with variety "Imperforate Vertically Between", fiscal blue crayon and ink manuscript marks removed and the pair cleaned, nevertheless a rare pair. Cert. Ceremuga (2018) Gi = £ 8'500 unused.

119a

(*)

750 (€ 675)



3238



3239

3238 10 s. reddish brown, a horizontal pair, imperforate Plate Proof on watermarked 'Large Crown over Q' paper, each overprinted SPECIMEN in violet reading down, diagonally creased but of fine appearance. A scarce multiple.

3239 10 s. reddish brown, wmk. Crown over Q, a fine Imperforate example, marginal from left of sheet with contemporary ink notation "Now in use 12/1/82". Scarce and most unusual.

Gibbons

Start price
in CHFStart price
approx. €

125 Proof

*

150

(€ 135)

125 var

(*)

150

(€ 135)



3240

3240 10 s. bistre-brown (coffee shade), wmk. Crown over Q, perf. 12, an unused block of four of lovely delicate colour, Transfer Types 6-7/1-2, fresh and very fine, some minor vertical gum bends not affecting appearance, large part og. An extremely scarce and most attractive multiple Gi = £ 3'400+.

126

田*

1'000

(€ 900)



3241

3241 20 s. rose, wmk. Crown over Q, perf. 12, an unused horizontal pair, perfs. a tad ragged at top and heavily hinged at top, well of good colour for this stamp, small part og. A very rare pair Gi = £ 3'600+.

127

*

500

(€ 450)

1879/81, Sideface Issue



3242

3242 Essay by William Bell, imperforate on white wove paper watermarked Crown over Q, with "Q" of "Queensland" no longer reversed, overprinted SPECIMEN diagonally in blue. Scarce.

Essay

(*)

150

(€ 135)



3243

Gibbons

Start price	Start price
in CHF	approx. €

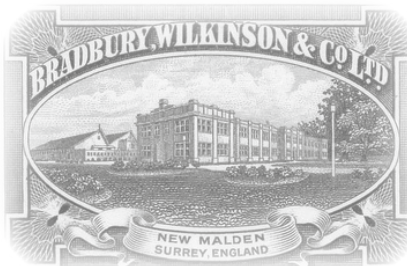
- 3243** 6 d. yellow-green, wmk. Crown and Q (Type 6), an unused block of six (3 x 2) marginal from left of sheet, traces of aging just showing on perfs. and on reverse, sheet margin with vertical crease but attractive and scarce with large part og. Gi = £ 1'080.

143

田*

200 (€ 180)

1882/95, High Values



3244



3245



3246

- 3244** Bradbury Wilkinson Colour Trials for the 2 s. value (4), all imperforate, with 2 s. (position 26) in deep rose as chosen for 5 s. value, 2 s. (position 20) in yellow-green (a rejected colour) and 2 s. in vermilion in a vertical pair (positions 2/7) as selected for the 2 s. 6 d. value, a fine and scarce group. All ex Yardley.
- 3245** 10 s. brown on thin paper, wmk Crown over Q sideways, a fine unused example, variety "Imperforate", marginal from base of sheet. Scarce and appealing stamp with large part og.
- 3246** £ 1 deep green on thick paper, wmk. Crown on Q (Type 10), a superb unused example of perfect centering and colour, showing "Retouch on £ 1 tablet at lower right" (position 29 on the sheet), superb og. Scarce stamp Gi = £ 850.

152 Proofs

(*)

300 (€ 270)

155 var

*

150 (€ 135)

161b

*

200 (€ 180)

1882/1908, Sideface Issue

- 3247** **Second Sideface Issue** 1882/91: The collection of the issue from 1 d. to 1 s. values, all ex Charles Lathrop Pack collection and on his brilliantly researched album leaves, with unused blocks of all values and showing the four different electrotypes; incl. unused examples of 1 d. vermilion (23), 2 d. blue (15), 4 d. yellow (11), 6 d. green (19) and 1 s. mauve (47). A lovely collection (Pack pages numbered 2109-2120) Gi = £ 2'200+.

166/174

田*

300 (€ 270)



3248

Gibbons

Start price
in CHF Start price
approx. €

- 3248** 1882: Die Proof for 2 d. value with frame around the design, printed in vermillion (colour selected for the 1 d. value) on unwatermarked cream wove paper, 110 x 78 mm., annotated in manuscript "Engravers Proof 4" at lower left, some minor spotting but extremely rare.

168 Proof

(*)

500

(€ 450)



3249

- 3249** 2 d. blue, wmk. Crown over Q, compound perf. $9\frac{1}{2} \times 12$, a fine used horizontal strip of three cancelled by "59" numeral obliterations in black. A scarce multiple Gi = £ 250+.

177

100

(€ 90)



3250



Brisbane General Post Office

- 3250** **Fourth Sideface Issue** 1890: 1 d. vermillion-red, a fine imperforate pair used on 1895 cover to Brisbane, cancelled by "GPO" obliterations with despatch datestamp at left (Nov 15). Minor envelope imperfections but a scarce usage of the variety on letter Gi = £325 off cover.

187a

**150**

(€ 135)



3251



3252



3253



Gibbons

Start price
in CHFStart price
approx. €

3251 Essay for the 2½ d. value, Imperforate with the 2½ d. value tablet in the top corners, printed in mauve on white watermarked 'Queensland' paper. Rare and very attractive.

191 Essay

(*)

250

(€ 225)

3252 Essay for the 2½ d. value, Imperforate with the 2½ d. value tablet in upper corners, printed in myrtle green on white watermarked 'Queensland' paper. Slight bend but very scarce.

191 Essay

(*)

200

(€ 180)

3253 Essays (3) for the 2½ d. value, imperforate with the 2½ d. value tablet centrally at base on two printed in green and in blue; and 2½ d. value in white on 2 d. rosine, all on 'Queensland' white paper. A few minor imperfections but a scarce group.

191 Essays

(*)

400

(€ 360)



3254

3254 4 d. yellow, wmk. Crown over Q, a fine unused block of fifteen (5 x 3), marginal from right of sheet, first stamp (Row 4, stamp 6) showing Plate Variety "EN" in PENCE joined, fresh and very fine, superb or unmounted og. Scarce and attractive positional multiple Gi = £ 325+.

194b+ 194

田*/**

150

(€ 135)



3255

3255 Fifth Sideface Issue with White Background 1895/96: Proof for the 2 d. value, Imperforate in blue on white wove thick paper, a fine block of four, right hand vertical pair showing over-runs of colour at right. Scarce.

212 Proof

田(*)

150

(€ 135)

3256 2½ d. Imperforate Proofs on granite safety paper: pair in dull brown on greyish blue, 2½ in dull violet on greenish in a block of four and 2½ d. rosy-mauve on bluish in a block of four. Scarce group, all ex Yardley collection.

213 Proofs

田(*)

150

(€ 135)



3257

Gibbons

Start price	Start price
in CHF	approx. €

- 3257** **Seventh Sideface Issue with Value in All Four Corners** 1897/1908: Colour Trial for the 2 d. value, Imperforate and printed in blue, a marginal pair, each with Double Print and handstamped CANCELLED in black, with manuscript "Printer's Test Stamps" in margin at top. Scarce and most unusual.

- 3258** Mint Collection on leaves (all are ex Charles Lathrop Pack collection), with shades and Plate Flaws noted from ½ d. deep green (5), 1 d. vermilion (26), 2 d. blue (30), 2½ d. rose (13), 2½ purple on blue (25), 3 d. brown (17), 4 d. yellow (12), 5 d. brown (17), 6 d. green (21), 1 s. violet (20), 2 s. turquoise (13); a beautiful lot written up by a consummately careful, knowledgeable and diligent collector.
Provenance: Collection Charles Lathrop Pack.

234 Proof (*) **150** (€ 135)231/254 田*/** **400** (€ 360)

3259



View of Port Moresby

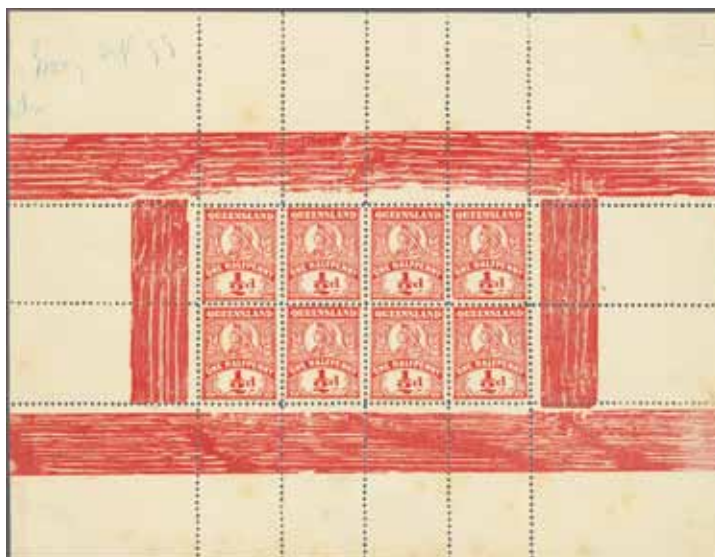
- 3259** "Used in New Guinea" 1896/96, ½ d. deep green, four examples used on 1899 cover to Brisbane, all cancelled by "BNG" obliterator with PORT MORESBY / BRITISH NEW GUINEA cds at left (Sept 5) in black. Reverse with 'Cookstown / Queensland' transit cds (Sept 8). A scarce cover, stated to have been mailed in Bwagoia and cancelled at Port Moresby in transit. Small opening tear at top but a very scarce cover. Cert. BPA (1960).

209 ☒ **350** (€ 315)

3260

- 3260** ½ d. deep green to 2 s. turquoise (12 stamps), wmk. Crown over Q, perf. 12½-13, all applied to small pieces (4) and handstamped 'SPECIMEN.' in violet by the Natal Post Office (Samuel type NA2) upon receipt from the UPU. A few minor age spots but a rare and unique group. Cert. BPA (1981).

231s-254s △ **250** (€ 225)



3261

Gibbons

Start price
in CHF Start price
approx. €

- 3261** Essay for the 1899 issue ½ d. in sheetlet format of eight stamps (4 x 2) printed in carmine, perforated 12 on soft wove ungummed paper. Some minor aging and manuscript notations in blue crayon at upper left but a magnificent sheet (see the Alan Griffiths collection for a similar sheet printed in green). Very rare.

262 Proof 田(*)

1'200 (€ 1'080)

1900, Anglo-Boer War Patriotic Fund



3262



Boer Militia Men

- 3262** 1900: 1 d. (6 d.) claret and 2 d. (1 s.) violet, used on 1900 cover from Brisbane to London tied in black by Brisbane / 'QL' obliterations (July 14) in black. Taxed on arrival in UK as the issue was not permitted by the UPU for overseas usage and charged with "5d. / FBA" handstamp for the amount due upon receipt at the Foreign Branch. Minor imperfections but an extremely rare usage.

Provenance: Collection A. Ron Butler RDP, Spink, London, 22 Sept 2004, lot 1237.

263/264

**300** (€ 270)

1907/11, Watermark Crown on A



3263

- 3263** 1907/11: 1 d. vermillion, wmk. Crown on A, a fine Imperforate horizontal pair, fresh and fine, unmounted og. Scarce Gi = £ 400.

288a

**150** (€ 135)

Postal Fiscals, Stamp Duty



3264



3265

- 3264 Postal Fiscals** 1866/72: Small group with 1866 1 d. blue, wmk'd, unused, 1871/72 2 s. blue unused and the wmk'd set of eight values unused each overprinted SPECIMEN in black. Imperfections but generally fair to fine, a scarce group.
- 3265 Stamp Duty** 1871/72: Lithographed Proofs / Colour Trials (9) for the Stamp Duty series, Imperforate, with 6 d. value in claret and red-brown, 1 s. in yellow-green (partial printing on reverse), 2 s. in deep blue, 2 s. 6 d. in brick-red, 5 s. in orange-brown, 10 s. in brown and 20 s. in rose, together with a further 1 s. in yellow green with blue crayon mark and overprinted CANCELLED in black. A scarce group.
- 3266** Lithographed Proofs / Colour Trials (9 pairs) for the Stamp Duty series, Imperforate, with 1 d. value in mauve, 6 d. red-brown, 1 s. in yellow-green (partial printing on reverse), 2 s. in deep blue, 2 s. 6 d. in brick-red, 5 s. in orange-brown, 10 s. in brown and 20 s. in rose, 10 s. brown and 20 s. rose, all fresh and fine, a scarce group. Ex Yardley collection.

Gibbons		Start price in CHF	Start price approx. €
F9+ F19+ F16/F23 spec	*/(*)	150	(€ 135)
F16-F23	(*)	300	(€ 270)
F16-F23	(*)	500	(€ 450)



3267

- 3267 Stamp Duty** 1878/79: Proof of the 1 d. value printed in violet & dull lilac, engraved by William Bell, a scarce horizontal pair Imperforate on thick card paper, the pair somewhat out of alignment and marginal at base, some staining but very scarce, illustrated in Basset Hull on plate XXIV. Ex Yardley collection.
- 3268 Fiscals** 1895/1901: Impressed Duty Stamps, the set of 63 stamps from 3 d. to 10 s. printed in blue (two 2 s. values with one optd. CANCELLED and the other the redrawn variety), 11 s. to 19 s. values in green, 20 s. to 45 s. values in red, £ 3 to £ 9 values in orange-brown and £ 10 - £ 500 values in violet; all invalidated by a negative circular embossing upon presentation to MP's in 1901 together with a further 62 stamps with cto black cancel on corners; together with five Edward VII Impressed Duty stamps from 6 d. - 10 s. and George V 10 s., 30 s. and £ 7 values, all used. An interesting lot (141 items).

F33 Proof	(*)	300	(€ 270)
Fiscals	(*)	150	(€ 135)

Collections

- 3269** 1860/80: Chalon Heads collection with 1860 1 d. carmine used, 6 d. green (shades) used (3, one with cert. RPSL), imperforate Plate Proofs (4) on unwmk'd paper with 2 d. in black, 3 d. value in blue (2) and 1 s. in mauve; 1861 rough perf. 1 d. carmine unused, 2 d. blue unused, 3 d. brown unused (2) and used and single franking of 6 d. on 1862 cover from Gayndah to Sydney; 1863 1 d. vermilion unused (5) including a strip of three, 6 d. apple green unused (4), 1863/67 2 d. blue unused (2), 3 d. brown unused (3), 1866 2 d. blue in an unused pair, 1866/67 issue with 5 s. pale rose block of four handstamped SPECIMEN diagonally in blue, 1868/74 2 d. blue in a fine block of four optd. SPECIMEN in black, 1868/78 2 d. blue in an unused block of four, 1880 lithographed 2 s., 2 s. 6 d., 5 s. (2) and 10 s. each overprinted SPECIMEN diagonally; together with covers with 2 d. on 1876 Land Department wrapper, 1870 registered cover to Brisbane franked by 2 d. blue and 6 d. orange-yellow, 1870 cover from Nebo with 1 d. pair, 1875 cover from Aramac with 1 d. pair, 1871 cover to Melbourne with 1 d. (2) and 2 d. (2) etc. Generally fine, an attractive lot (100+ items).

☒ 750 (€ 675)

		Gibbons		Start price in CHF	Start price approx. €
3270	1879/95: Collection of first and second Sideface issues and the High Values, with 1 d. reddish brown and 2 d. blue each in bottom marginal strips of four (showing mixed Dies) optd. SPECIMEN diagonally in black, strips of four 1 d., 2 d., 4 d. (2, one optd. in violet) and 6 d. all optd. SPECIMEN diagonally in black, 1 s. lilac in two pairs similarly overprinted, and 1 s. lilac in a regummed block of four and an imperforate single example, 1880 ½ d. on 1 d. reddish brown (3) each optd. SPECIMEN, 2 d. blue and 6 d. green in imperf. wmk'd pairs, 1882/95 High Values with 1882 2 s. and 10 s. unused, £ 1 deep green with Re-entry used, 1886 thick paper 2 s. 6 d., 5 s. rose single, marginal pair and block of four unused and used, 10 s. brown single and marginal pair unused and block of four used and £ 1 deep green (2) all unused and £ 1 deep green showing Re-entry used; 1895 5 s. rose unused (2) and blocks of four unused and used, 5 s. rose in an unused strip of three and a used block, £ 1 deep green used showing Re-Entry; 1889 2 s. brown block of four optd. SPECIMEN in violet and an imperforate Proof pair (ex Yardley), further SPECIMEN opts. on single values struck in black or in blue etc. A most appealing collection (113 items).	128-182	田*	750	(€ 675)
3271	1890/96: Collection with the specialised study largely formed by Charles Lathrop Pack and Ron Butler RDP., showing 1890 issue with ½ d. unused blocks of four (4) and a block of 60 and a full sheet of 120; 1 d. vermilion with an imperforate horizontal pair (Gi = £ 300), 1 d. in blocks of four (2), nine, twelve (2) and 84; 2 d. blue blocks of four (6), block of 30 and a complete sheet of 120 from the retouched plate with FWO for TWO error, 2½ d. carmine in blocks of four (5), and nine and an Imperforate Proof; 3 d. brown blocks of four (4), six and eight, 2 s. red-brown in blocks of four (2); 1895 2 d. blue retouched plate block of sixty, 1 s. mauve block of four; 1895/96 ½ d. in blocks of four (6) and an Imperforate Proof block of four (ex Yardley), 1 d. in blocks of four (4), 2 d. in blocks of four, 2½ d. in blocks of four (2) and a range of covers/cards. A delightful study.	184/228	田*/**	500	(€ 450)
3272	1897/1901: Colour Trial Proofs for the 2½ d. value on Crown over Q paper, perf. 12 or 12½, with unused blocks of four in lake (two, one is marginal), brown, greenish-blue (two, one is marginal), deep slate (two, one is marginal), rose on blued, yellow and a marginal block of six in violet on blued. Fresh and fine, a scarce assembly. Ex Yardley collection.		田*	300	(€ 270)
3273	1896/1908: The specialised primarily unused collection with multiples throughout, with 9 d. blue-green blocks of four (4) and a block of fifteen, 1 d. in blocks of nine, 48 and 60, 2 d. unused with "Cracked Plate" flaw (2) and "Scratched Plate" variety used (4, two are on covers), 2 d. blocks of four and six unused; 1898 2½ d. rose in an unused block of 36, 2½ d. violet on blued with blocks and a cover to India, 3 d. brown blocks of four (8) and eight, 4 d. yellow block of four (8) and a block of nine, 5 d. brown in blocks of four (3), six and eight, 6 d. green blocks of four (3), 1 s. pale mauve block of four (2), 2 s. turquoise-green in blocks of six, nine, twelve and 18 etc., together with used blocks and cancellation interest throughout.	229/254	田*/**	750	(€ 675)
3274	1897/1908: Collection with 1 d. vermilion unused multiples with experimental rouletting (Gi 256/259d), with blocks of four (5), six (2), eight, twelve and a block of thirty six, 1900 Patriotic Fund set of two unused and 2 d. used, 1903/05 9 d. unused (3), 1903 2 s. 6 d. unused, 1907/11 set with multiples including 2 s. turquoise in a block of four and block of eight, May 1911 5 d. dull brown in blocks of six and nine (2) unused, 1 s. violet in a block of six, 1907 2 s. 6 d. vermilion in an unused block of four and three single examples, 5 s. rose unused (2), 10 s. blackish brown unused, £ 1 unused (2, in differing shades) etc. A generally fine collection with much of interest (102 items).	257-307	田*/**	500	(€ 450)

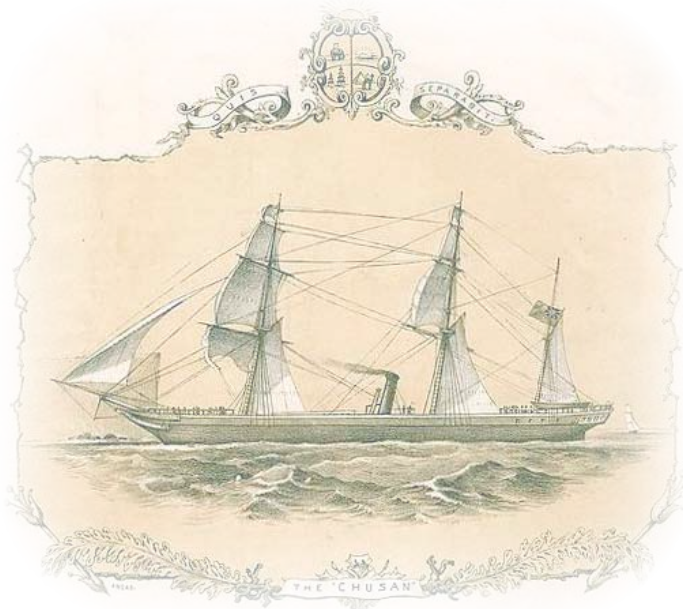
SOUTH AUSTRALIA

- 1836** Proclaimed as a British Colony on 28 December 1836.
- 1839** First local Post Office Act introducing a rate of 3d. per letter, irrespective of weight, for all letters received or posted for delivery in the Colony.
- 1841** Postal rate for internal letters based on weight and distance carried.
- 1854** Inland rate of 2d. per ½ ounce weight on prepaid, double rate on unpaid letter mail.
- 1855** The first stamps printed from steel plates engraved by Perkins Bacon in London. Steel plates were then delivered to the Colony for further printings.
- 1868** First surface printing plates by De La Rue delivered to Adelaide for printing.
- 1874** First Official stamps overprinted ,O.S.‘



Proclamation of South Australia in 1836

Stampless Mail



Steamer 'Chusan'



3275

3275 1852: Cover to Swan River, Perth, Western Australia prepaid '6' (pence) in red ink manuscript endorsed 'pr. Steamer via Adelaide' (this deleted) and replaced by (Steamer) 'Chusan' at top, struck with ADELAIDE / SOUTH AUSTRALIA cds in red (Sept 11).

Gibbons

Start price in CHF Start price approx. €



150 (€ 135)

1855, Printed in London



John R. Boker Jr.



3276

Gibbons

Start price
in CHF

Start price
approx. €

3276 1 d. dark green, wmk. Large Star, imperforate, a fine unused example, ample margins on two sides and large at left and at top (with tiny portion of adjoining stamp), of good rich colour. Trivial thin at lower right and fresh, slightly redistributed original gum. An exceptionally scarce stamp so fine. Cert. Ceremuga (2018) Gi = £ 10'000.

Provenance: Collecion John R. Boker Jr., Harmers, London, 14 April 1981, lot 45.

1

*

2'500 (€ 2'250)



Philipp von Ferrary



Alfred H. Caspary



3277

3277 1 d. dark green, wmk. Large Star, imperforate, an exceptional horizontal strip of three, ample to large margins all round, of fine colour and lightly cancelled by "28" numeral obliterator of Koorringa in black. A lovely multiple in superb quality Gi = £ 1'500+.

Provenance: Collection Philipp von Ferrary, Sale 7, Paris, 13 June 1923, lot 71.

Collection Alfred J. Caspary, Harmers, London. 8 Oct 1958, lot 406.

1

1'000 (€ 900)



3278



3279

		Gibbons		Start price in CHF	Start price approx. €
3278	Perkins Bacon 2 d. Plate Proof in dull carmine-lake, on medium wove paper without watermark, imperceptibly touched at right and sheet marginal at left. A fine and scarce Proof. Cert. Ceremuga (2018).	2 Proof	(*)	200	(€ 180)
3279	Plate Proof for 2 d. value in black, Plate II without dot in front of ear and 'cleaner' impressions, a fine block of nine with large margins all round, marginal from right of sheet. Scarce.	2 Proof	田(*)	200	(€ 180)



Rowland Hill



3280

3280	2 d. rose-carmine, wmk. Large Star, imperforate, a fine used example, close to large margins all round, of vivid colour, struck with large part "CANCELLED" obliterator in black by Perkins Bacon, when donating the six stamps to Rowland Hill's nephew Ormonde Hill, an issue that led to the loss of Perkins Bacon's printing contract with many Colonies. Position 6 in the Peter Jaffé reconstruction. A splendid example of this great rarity Gi = £ 11'000.	2		5'000	(€ 4'500)
------	--	---	--	-------	-----------



3281



3282

- 3281** 2 d. rose-carmine, wmk. Large Star, imperforate, a used vertical pair, clear to good margins all round, positions 1/5, each stamp showing a re-entry, position 1 with re-entry at top left and in 'Postage', position 5 with re-entry in lower right corner ornament and in 'Pence'; neatly cancelled by "75" numeral obliterator of Yankallila.
- 3282** 2 d. rose-carmine, wmk. Large Star, imperforate, a horizontal strip of four with large margins all round and portion of adjoining stamp at right, showing a 'plate laying down' squeezing together of the second and third stamps in the strip, lightly cancelled in black. Rare.

Gibbons

Start price
in CHF Start price
approx. €

2

100 (€ 90)

2

250 (€ 225)



3283

- 3283** 2 d. rose-carmine, wmk. Large Star, imperforate, a single and horizontal pair used on cover to Tavistock, Devon endorsed 'Per Steamer; via India & Southampton', the adhesives tied by "31" numeral obliterations with corresponding ANGASTON / SOUTH AUSTRALIA cds at left (Jan 26) and by London 'Paid' cds in red (April 6). Reverse with 'Adelaide' cds in red (Jan 27) and Tavistock arrival cds (April 7) in black. The cover with closed tear on front just away from the pair and one back flap missing but an early usage of the first issue in the first month of issue.

2



500 (€ 450)



View of Angaston



3284



3285

- 3284** 6 d. deep blue, wmk. Large Star, imperforate, a used horizontal pair, large margins all round with portion of adjoining stamps at top and at right, lightly cancelled by Adelaide obliterator in black. Fine and most attractive Gi = £ 340+.
- 3285** 6 d. deep blue, wmk. Large Star, imperforate, a used horizontal pair, large margins all round with portions of adjoining stamps on three sides and marginal at left, lightly cancelled by barred obliterator in black. Exceptional and most attractive Gi = £ 340+.

3

150 (€ 135)

3

200 (€ 180)



3286

Gibbons

Start price
in CHF Start price
approx. €

- 3286** 6 d. deep blue, the used selection of six items with single examples (3, including one on piece from Morpeth Vale), an attractive horizontal pair cancelled '30' numeral of Tanunda, a strip of three on piece and a small piece with 3 d. and 1858 Adelaide printing 2 d. orange-red (Gi 7). A few with small faults but a scarce group Gi = £ 1'500+.

3 △ **250** (€ 225)



Post Office and Town Hall of Adelaide



3288



3287

- 3287** 6 d. deep blue, a four margin example used on 1857 cover to Lembrück, Hannover tied by numeral obliterator in black. Faint Marseille entry marking in red on front and reverse with Adelaide datestamp (Oct 14), Lyons à Paris cds (Jan 12, 1858) and 'Frankreich per Aachen' transit in red and obverse with an array of rate charges in blue manuscript. A few minor envelope imperfections due to journey but a scarce usage to a most unusual destination. Cert. BPA (2018).

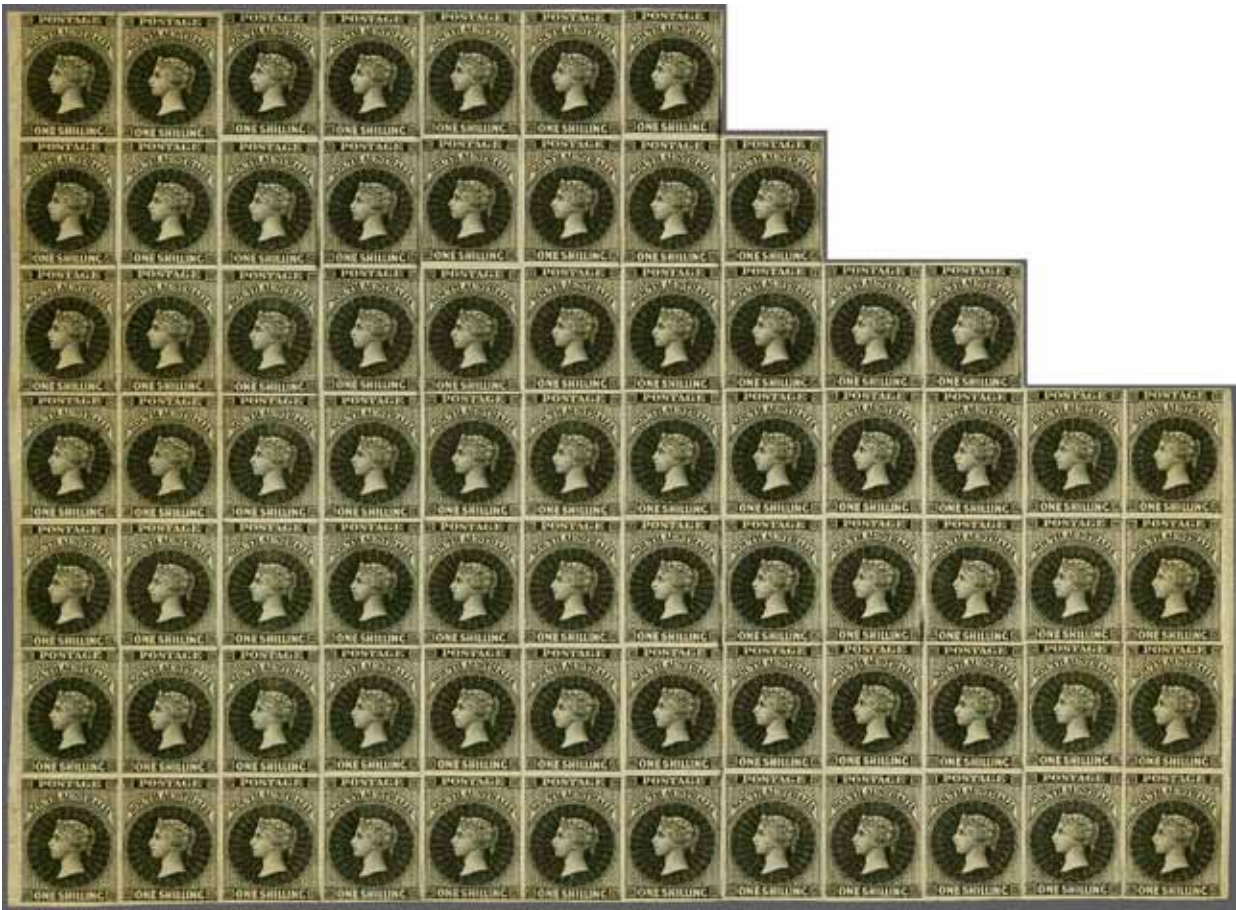
3 ☒ **500** (€ 450)

- 3288** 6 d. deep blue, wmk. Large Star, imperforate, a fine four margined example used on 1858 cover to Dunfermline, Scotland tied by "55" numeral obliterator with corresponding 'Strathalbyn / South Australia' despatch cds (Sept 5) in blue at left. Reverse with Adelaide cds in blue (Sept 7) and Stirling and Dunfermline cds's (Nov 15). A fine and scarce cover.

3 ☒ **200** (€ 180)



Perkins, Bacon & Co. Printers



3289

Gibbons
Start price in CHF Start price approx. €

3289 Plate Proof for the 1 s. value in black, imperforate, the extraordinary 'Dr. Osborne' block of 73, marginal from left of sheet with four complete horizontal rows of 12 below horizontal rows of seven, eight and nine respectively. Some minor ironed bends of no significance as this is the largest block of this Proof recorded.

4 Proof ⌘(*) **2'000** (€ 1'800)

1856/58, Adelaide Printing, imperforated



3290



3291



'comma' within
the first 'A'
of 'Australia'



3292

Gibbons

Start price
in CHF Start price
approx. €

- 3290** 1 d. deep yellow-green, wmk. Large Star, imperforate, used example with ample to large margins all round with portion of adjoining stamp at left, cancelled by "25" numeral obliteration of Gawler in black. A rare stamp so fine Gi = £ 550.

5

200 (€ 180)

- 3291** 1 d. deep yellow-green, wmk. Large Star, imperforate, a stupendous used example with enormous margins on all sides, portions of adjoining stamps on all sides, of vibrant colour, lightly cancelled in black. A wonderful 'jumbo' example and amongst the finest possible extant. Signed H. R. Harmer Gi = £ 550.

Note: The stamp shows an interesting plate flaw, with a 'comma' within the first 'A' of 'Australia'.

5

300 (€ 270)

- 3292** 1 d. pale yellow-green, wmk. Large Star, imperforate, an unused example of superb appearance, good to large margins all round with trace of adjoining stamp at right, of rich defining colour, tiny inclusion at lower left and filled pinhole below the neck and without gum, otherwise a fresh and very attractive example of an exceedingly rare stamp Gi = £ 8'500.

6

(*)

300 (€ 270)



3293

- 3293** 2 d. orange-red, wmk. Large Star, imperforate, an unused horizontal strip of four in a rich dark shade, large margins all round, third stamp with closed tear and thin on fourth stamp, otherwise truly exceptional for this stamp in unused condition with large part original gum. A very rare multiple. Cert. RPSL (1980) Gi = £ 9'000+.

7

*

1'500 (€ 1'350)



3294



3295

- 3294** 2 d. orange-red, large margins all round, used locally within Adelaide on 1858 entire letter tied by circular 'PAID ADELAIDE S.A.' datestamp (Dec 4) in blue with further information strike alongside. Fresh and fine cover.

7

✉

200 (€ 180)

- 3295** 2 d. orange-red, wmk. Large Star, imperforate, a fine example with large margins all round, scissor cut well away from design at lower left, used on 1858 entire letter to Gawler Place tied by PAID / ADELAIDE S.A. datestamp (Oct 25) in blue-green. Exceptional quality, a most attractive entire.

7

✉

200 (€ 180)



3296



3298

Gibbons

Start price
in CHFStart price
approx. €

- 3296** 2 d. 'blood-red', wmk. Large Star, a fine unused example in this wondrously rich shade, with clear to large margins all round, slightest of horizontal creases not affecting the spectacular appearance, fresh and very fine for this rarity, large part og. Cert. Ceremuga (2018) Gi = £ 3'000.

8

*

750

(€ 675)



3297

- 3297** 2 d. 'blood' red, wmk. Large Star, imperforate, a fine example in a deep bright shade, with ample to large margins all round, used on 1856 entire letter to Gawler Place tied by Adelaide obliterator with PAID / ADELAIDE S.A. datestamp (Dec 5) in red alongside. Exceptional quality, a most attractive entire, used in third week of issue.

8

✉

200

(€ 180)

- 3298** 2 d. red, wmk. Large Star, imperforate, a used horizontal strip of four, margins clear to large on all sides, of excellent fresh colour, neatly cancelled by "25" numeral obliterations of Gawler. A superb strip.

9

200

(€ 180)



3299

- 3299** 2 d. red, wmk. Large Star, imperforate, a fine used example with grazed to large margins all round with portions of adjoining stamps at top and at base, used on 1858 cover to Dry Creek tied by PAID / ADELAIDE S.A. datestamp (Sept 29) in blue-green. Reverse with 'Dry Creek' arrival cds and obverse with manuscript "Opened by Mr. John Hill of Dry Creek - not for him" and held at the P.O. for one month with UNCLAIMED straight line, GRAND JUNCTION / S.A. cds (Oct 29) and oval ADVERTISED UNCLAIMED / ADELAIDE all in black (Oct 31). A scarce and most unusual cover.

9

✉

300

(€ 270)



City View of Adelaide



Maurice Burrus



3300

Gibbons

Start price
in CHF Start price
approx. €

- 3300** 1 s. orange, wmk. Large Star, imperforate, a magnificent used horizontal strip of three, large margins all round and of excellent colour, lightly cancelled by Adelaide obliterators in black. Exceptional quality, a choice multiple and very rare *Gi* = £ 1'400+.
Provenance: Collection Maurice Burrus, RL, London, 28 Nov 1962, lot 288.

12

750 (€ 675)

1858/59, Adelaide Printing, First rouletted issue



3301

- 3301** 2 d. red, wmk. Large Star, rouletted, a fine example used on 1859 entire letter to Gawler Place cancelled by PAID / ADELAIDE S.A. datestamp (Nov 28) in blue. Scarce and very fine.

15

**150** (€ 135)

3302

- 3302** 2 s. orange, wmk. Large Star, rouletted, a fine horizontal strip of four, lightly cancelled by Adelaide obliterators in black. An attractive and scarce multiple *Gi* = £ 200+.

18

150 (€ 135)

1860/69, Second rouletted issue



3303

Gibbons

Start price
in CHFStart price
approx. €

- 3303** 1 d. dull bluish sage green, wmk. Large Star, rouletted, an unused block of four of rich colour, small surface thin at upper right and tiny tear at base of lower left stamp, despite the two faults an exceedingly rare multiple of delightful appearance, large part og. Ceret. Ceremuga (2018) Gi = £ 600+.

20

田*

200

(€ 180)



3304



3305

- 3304** 1 d. pale red, wmk. Large Star, rouletted, a fine unused block of six of good colour, minor corner creases not apparent on front, first stamp with slight stain, otherwise fresh and fine, large part og. An attractive and scarce multiple Gi = £ 1'250+.

24a

田*

300

(€ 270)

- 3305** 1 d. bright vermillion, wmk. Large Star, rouletted, a fine unused block of eight of good colour, slight rusting at base on roulettes, minor gum creasing, fresh and fine, large part og. An attractive and scarce multiple Gi = £ 1'200+.

26

田*

300

(€ 270)



3306

- 3306** Die Proof for the 4 d. value in black on white paper, Plate 1 with dot on the Queen's ear, affixed to card, 38 x 41 mm., superb and very rare.
Provenance: Collection E. R. Slade Slade, Harmers, Sydney, 29 Nov 1979, lot 152.

27 Proof

(*)

1'000

(€ 900)



3307



3308

- 3307** 4 d. dull violet, wmk. Large Star, rouletted, a fine unused block of four of good rich colour, fresh and very fine, large part og. A scarce and most attractive multiple Gi = £ 640+.
- 3308** 9 d. grey-lilac, wmk. Large Star, rouletted, a fine unused block of six (3 x 2), of fine delicate colour, one small natural gum stain barely affects appearance, superb og. with lower three stamps unmounted og. A delightful block, the largest recorded unused multiple Gi = £ 900+.
- Provenance: Collection Colonel Napier; RL, London, 11 May 1976, lot 101.*
- Collection John O. Griffiths, RL, London 3 June 1992, lot 1150.*

Gibbons		Start price in CHF	Start price approx. €
27	田*	180	(€ 160)
34	田*/**	750	(€ 675)



3309

- 3309** TEN PENCE in blue on 9 d. orange-red, opt. Type 6, rouletted, a fine unused example of good colour, fresh and fine, large part og. Cert. Ceremuga (2018) Gi = £ 550.
- 3310** No Lot

35	*	180	(€ 160)
----	---	-----	---------



3311

- 3311** Plate Proof for the 2 s. value in black, imperforate block of four on thick white wove paper, fresh and very fine. A scarce and attractive block.

43 Proof	田(*)	200	(€ 180)
----------	------	-----	---------

1868/71, Rouletted & Perforated/Perforation Experiments/Emergency Issue



3312



3313

- 3312** 2 d. vermilion, wmk. Large Star, perf. $11\frac{1}{2}$ - $12\frac{1}{2}$ from imperforate issue, a fine used example of this elusive stamp, cancelled by fine strikes of "108" numeral obliterator of Callington in black. Superb example of a very rare stamp. Signed Houtzamer. Cert. BPA (2001) Gi = £ 1'400.
- 3313** 2 d. blue-green, perf. 11 - $12\frac{1}{2}$ x roulette, an unused horizontal pair of good colour, watermark and slight iron in gum showing through, minor thin, large part og. A scarce multiple Gi = £ 1'100+.

Gibbons

Start price
in CHF

Start price
approx. €

45

400

(€ 360)

53

*

200

(€ 180)



Alfred H. Caspary



3314

- 3314** 6 d. pale bright blue, wmk. Large Star, rouletted issue perforated $11\frac{1}{2}$ - $12\frac{1}{2}$, a fine unused block of five, of excellent colour and generally very fine large part og. An exceedingly scarce stamp in a large multiple Gi = £ 4'500+.
- Provenance: Collection Alfred H. Caspary, Harmers, London, 8 Oct 1958, lot 445.*

56

田*

1'000

(€ 900)



3315



3316



3317

- 3315** TEN PENCE in blue on 9 d. yellow, opt. Type 3, perf. $11\frac{1}{2}$ x reperforated 10 at sides, a used example variety "Printed Both Sides", cancelled by 'Eden Valley' cds and part barred numeral handstamp in black. Reverse with weaker but fine impression. A rare variety, only known used. Cert. Ceremuga Gi = £ 1'200.
- 3316** TEN PENCE in blue on 9 d. yellow, wmk. Large Star, perf. $11\frac{1}{2}$ x rouletted, a fine used example showing variety "Printed on Both Sides", a used example cancelled by neat KADINA cds in black (June 19, 1869). A rare stamp in much above average condition Gi = £ 1'400.
- Provenance: Collection Julius Beresford, RL, London, 5 Feb 1958, lot 428.*
- 3317** 1 s. chestnut red-brown, wmk. Large Star, rouletted issue perforated $11\frac{1}{2}$ - $12\frac{1}{2}$, lightly used example showing significant 'Double Impression' variety, especially prominent on the SOUTH AUSTRALIA tablet, cancellation leaving the variety very clear. Scarce.

59a

150

(€ 135)

59a

500

(€ 450)

61 var

100

(€ 90)

1868/79, Perforated



3318 9 d. bright mauve, wmk. Large Star, perf. 11½-12½, a fine used example with variety 'Printed on Both Sides', cancelled neatly by 'Port Adelaide' cds dated SP.10.73 in black. A fine example of this rare stamp. Cert. BPA (2007) Gi = £ 900.

76a

Gibbons	Start price in CHF	Start price approx. €
	300	(€ 270)



3319

3319 **Incoming Mail** 1870 (Oct 31): Cover franked by Great Britain 1867/80 6 d. mauve pl. 9 tied by 'Galway / 232' duplex in black, originally addressed 'via Southampton' to 'Green, Proprietor of Hotel, Port McQueen, South Australia', with Port Adelaide arrival cds (Jan 17, 1871) on reverse. The addressee unbound (framed ADVERTISED / UNCLAIMED) and the cover struck with MISDIRECTED TO / SOUTH AUSTRALIA in black and the cover sent on to Sydney (Jan 26) and thence to 'Port Macquarie / NSW' (Jan 30) where marked 'Opened by A. Green and not for him' in manuscript. Framed NOT KNOWN BY THE / LETTER CARRIERS and 'Sydney' cds (Feb 4) in red also on front and eventually mailed on to the 'Chinese Interpreter, Police Office, George St, Sydney'. A most unusual and fascinating cover.

GB 109	✉	300	(€ 270)
--------	---	------------	---------

3320 3-PENCE in red on 4 d. dull ultramarine, wmk. Large Star, perf. 10, a fine unused example of good colour and perforations, redistributed large part og. A very rare stamp. Cert. Ceremuga (2018) Gi = £ 1'500.

91	*	400	(€ 360)
----	---	------------	---------

3321 3-PENCE on 4 d. ultramarine, wmk. Large Star, perf. 10, overprinted in black, a fine unused example of good colour, fresh and very fine with just a couple of tiny gum skips,, large part og. Scarce Gi = £ 500.

92	*	180	(€ 160)
----	---	------------	---------



Clarence St., Port Macquarie

1870/73, Compound perforation



3322

3322 4 d. dull lilac, compound perf. 11½ x 10, a very fine unused horizontal pair in this rare shade, exceptional correct colour without any of the blue tinge found in the slate-lilac shade, fresh and very fine, large part og. Rare. Gi = unpriced.
Provenance: Colonel Napier.

103	*	300	(€ 270)
-----	---	------------	---------



View of Port Augusta



3323

Gibbons

Start price
in CHF

Start price
approx. €

3323 3-PENCE on 4 d. Prussian blue, perf. 11½-12, used on the famous 1871 cover to London endorsed 'via Brindisi' with 1870/73 6 d. bright Prussian blue, tied by 'Port Augusta' datestamps (Oct 5) in black. Reverse with 'P-O / Railway' cds (Oct 7) and 'GPO Adelaide' transit cds (Oct 7). The envelope with insignificant tears at top away from the adhesives. Wonderful and of great rarity - the sole recorded usage of the overprinted 3 d. on 4 d. Prussian Blue on letter. Cert. RPS (1958).

Provenance: Collection Julius Beresford, RL, London, 5 Feb 1958, lot 436.

66+ 106



2'500 (€ 2'250)



3324



3325



3326

Gibbons

Start price
in CHF Start price
approx. €

- 3324** TEN PENCE in black on 9 d. yellow, compound perf. 10 x 11½, a fine unused example of excellent centering for this stamp, fresh and fine, large part og. Gi = £ 300.
- 3325** TEN PENCE in black on 9 d. yellow, opt. Type 3, perf. 10 x 12½, a fine unused example of good colour, fresh and fine, large part og. Cert. Ceremuga (2018) Gi = £ 325.
- 3326** TEN PENCE in black on 9 d. yellow, opt. Type 5, perf. 10 x 12½ x 11½ x 12½, a fine unused example of good colour, fresh and fine, large part og. Cert. Ceremuga (2018) Gi = £ 325+.

107

*

100

(€ 90)

107

*

120

(€ 110)

107 var

*

120

(€ 110)

1871 (July), 4 d., perf. 10, Watermark 'V' over 'Crown'



3327

- 3327** 4 d. dull lilac, wmk. V over Crown, perf. 10, a fine used horizontal strip of three (a marginal strip showing POSTAGE watermark), centred to left, of good colour with central stamp showing vertical pre-printing paper fold, lightly cancelled in black (April 12, 1872). A scarce and most unusual multiple of this rare stamp Gi = £ 975.

111

300

(€ 270)

1876/1900, Watermark 'Broad Star'



3328



3329

- 3328** 3-PENCE on 4 d. ultramarine, wmk. Broad Star, perf. 11½-12, a superb unused block of sixteen (4 x 4), in a lovely fresh shade with large part or unmounted og. A magnificent and rare multiple Gi = £ 2'500+.
- 3329** 1 s. red-brown, wmk. Broad Star, perf. 11½-12 (large holes), a fine unused horizontal pair, variety "Imperforate Vertically Between", fresh colour, slight diagonal bend, unused without gum. Scarce Gi = £ 450.

112 田*/**

100

(€ 90)

130a

*

180

(€ 160)



Maurice Burrus



3330

Gibbons

Start price
in CHFStart price
approx. €

- 3330** 6 d. Prussian blue, wmk. Broad Star, perf. $11\frac{1}{2} \times 10$ and compound, the magnificent and famous unused block of 72, being the lower six horizontal rows of the sheet with full margins at base and sides, perf. $11\frac{1}{2} \times 10$ throughout but for one vertical row perforated $12\frac{1}{2}$ (left block of four) and margin at right perforated $10\frac{1}{2}$ with the rotary machine, with imprint requisition number "6D 3763" in black, of wonderful colour, minor creases and perf. separation as one would expect of a block this size, superb og or unmounted og. Delightful and a very rare Exhibition piece Gi. = £ 9'360.+.
Provenance: Collection Maurice Burrus, RL, London, 28 Nov 1962, lot 341.

139 □*/**

3'000 (€ 2'700)

1901/02, Watermark 'Crown SA'



3331



3332

- 3331** 1 s. dark reddish brown, wmk. Crown SA, perf. 11½-12, a fine unused block of sixteen (4 x 4), of fresh colour and superb large part or unmounted og. A scarce and most attractive multiple Gi = £ 400+.
Provenance: Colonel Napier.
- 3332** 2 s. carmine, wmk. Crown SA, perf. 11½ x 12, (small holes), a fine unused vertical strip of five in a deep shade, each stamp overprinted SPECIMEN in black, fresh and fine multiple with large part og. Signed Holcombe.

Gibbons	Start price in CHF	Start price approx. €
148 田*/**	150	(€ 135)
151 spec */**	120	(€ 110)

1868/76, De La Rue plates and electrotypes, Surface Printed Issues



3334



3333



3335

- 3333** Trial Colour Plate Proofs for the 2 d. value, all on thin white wove paper, watermarked 'Crown over SA' (wide), in eight blocks of four in a range of eight different shades: pale blue, green, violet, orange-yellow, orange-brown, dull orange, pale rose and deep brown-rose. Generally superb, a lovely group.
- 3334** 2 d. pale orange-red, wmk. Crown SA, perf. 10 x rouletted, a fresh unused example, large part og. A very scarce stamp *Gi* = £ 500.
- 3335** 1 d. deep green, wmk. Crown SA, perf. 10, a used example with variety "Double Impression", with slight central stain of no significance as this example is the discovery copy which resulted in the Stanley Gibbons listing. Matched with an unused normal example for comparison. A very scarce stamp. Cert. BPA (1993) *Gi* = listed but unpriced.
Note: Since the Stanley Gibbons listing we are aware of further examples being found.

Gibbons

Start price
in CHF Start price
approx. €

152 Proofs

田(*)

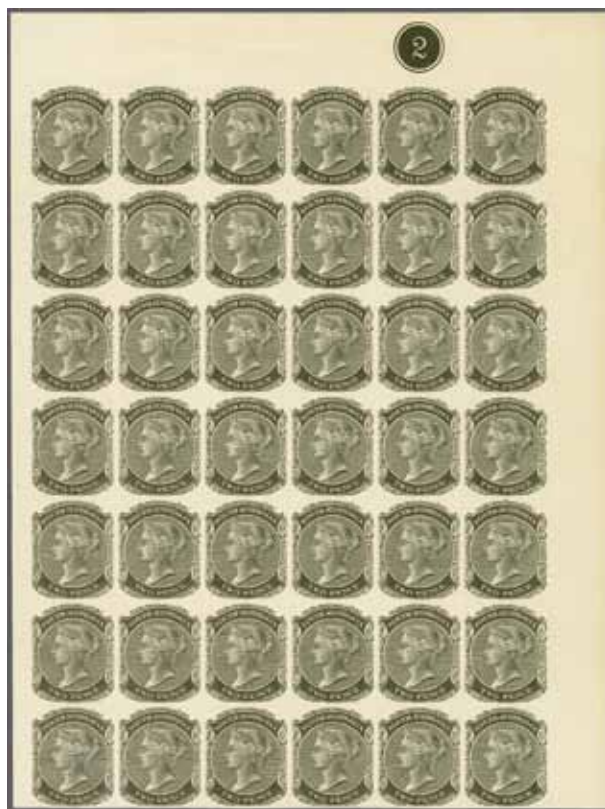
300 (€ 270)

157

*

150 (€ 135)

167bb

200 (€ 180)

3336

- 3336** Plate Proof for the 2 d. value, an imperforate block of 42 (6 x 7), printed in black on thick card paper, from the top right corner of the sheet with Plate Number "2" in margin. Fresh and very fine, a superb large multiple and very rare thus.
Note: The new plate was invoiced on February 26, 1880.

168 Proof

田(*)

750 (€ 675)

1883/99, De La Rue, New Designs



3337



3338

				Gibbons	Start price in CHF	Start price approx. €
3337	De La Rue Die Proof for 1/2 d. value in black on glazed white card, showing the 'Double Die' method, handstamped '13 JAN 82' at top in blue. A fine and scarce Proof.	182 Proof	(*)		200	(€ 180)
3338	De La Rue Die Proof for 1/2 d. value in black on glazed white card, showing the 'Double Die' method, handstamped '1 FEB 82' at top in blue with AFTER HARDENING in black. A fine and scarce Proof.	182 Proof	(*)		200	(€ 180)
3339	Bantam 1/2 d. red-brown, wmk. Crown over SA, a complete unused pane of 120 stamps (20 x 6), complete margins on three sides and most of margin at base, showing the compound perf. 10 x 11 1/2 affecting the alternate vertical rows, a few wrinkles as to be expected on a multiple this size, fresh and very fine, large part or unmounted og. Rare and splendid piece Gi = £ 3'500+.	186	田*/**		400	(€ 360)



3340

3340	Bantam 1/2 d. chocolate, wmk. Crown SA, perf. 15, a fine unused pair, variety "Perforated 12 1/2 Between", fresh and fine, large part og. Gi = £ 325.	188c	*		120	(€ 110)
------	---	------	---	--	-----	---------

1886/96 The 'Long' Stamps, 'POSTAGE & REVENUE'



3341

3341	1883: Essay for proposed 1/2 d. value, eventually adopted and used for the Postal Stationery wrapper (see 'De La Rue Collection' edited by Frank Walton RDP, plate 7021) hand-painted in stamp size on tissue paper, 154 x 125 mm., the design for the head-plate in flesh with background of vignette in deep brown, the surround picked out in Chinese white on black; with handstamp date "13 APR 83" above. A stunning, unique and absolutely beautiful Essay. Provenance: Collection Henry Frenkle, RL, London, 26 Sept 1979, lot 1306.	Essay	(*)		300	(€ 270)
3342	No Lot					



3343



3344

- 3343** 50 s. dull pink, wmk. Crown over SA upright, perf. 11½-12, a fine unused example, of fresh colour, smallest of browning at base on reverse not affecting appearance, superb unmounted og. A very rare stamp. Signed A. Diena. Cert. RPSL (1975) Gi = £ 4'500.
- 3344** £ 3 sage-green, wmk. Crown over SA upright, perf. 11½-12 small holes, a fine unused example, of brilliant freshness, usual somewhat blunted perforations, superb og. A lovely stamp of great scarcity. Cert. Ceremuga (2018) Gi = £ 5'250.
- Provenance: Collection William Frazer, Spink, London, 18 Sept 2003, lot 362.*

Gibbons

Start price
in CHF Start price
approx. €

201a

**

1'000

(€ 900)

202a

*

1'500

(€ 1'350)



3345

- 3345** £ 15 silver, wmk. Crown over SA upright, perf. 11½-12, a fine c.t.o. used block of four, marginal from base of sheet, of brilliant freshness, well centred and superb unmounted og. Extremely scarce, a lovely block.
- Provenance: Australia Post Philatelic Archive, 1979.*
Spink, London, 18 Sept 2003, lot 351.

207a

田

2'500

(€ 2'250)

1894 (June), New Designs



3346

Gibbons

Start price in CHF Start price approx. €

3346 1892: De La Rue Essay for the proposed 5 d. design as accepted, hand-painted on tracing paper, 56 x 84 mm., with the Shield & Arms in black ink and in pencil, Queen's head in ink and the tablets SOUTH AUSTRALIA and FIVE PENCE picked out in Chinese white with perforations drawn in pencil, dated at top "July 12, 92". See 'De La Rue Collection' edited by Frank Walton RDP plate 7011. Exquisite and wonderful Essay.

235 Essay (*) 750 (€ 675)

1902/04, The 'Long' Stamps/thin 'POSTAGE'



3347



"EIGHT" for "EIGHT" variety

3347 8 d. ultramarine, wmk. Crown over SA, perf. 11½-12½, a horizontal pair on small piece used in conjunction with 3 d. olive-green, the 8 d. pair with left hand stamp showing variety "EIGHT" for EIGHT, all tied by 'Adelaide' squared circle datestamps in black, leaving the variety clear. Minor imperfections of no significance, a rare and famous piece Gi = £ 3'000+. Provenance: Collection Julius Beresford, RL, London, 5 Feb 1958, lot 507. Collection Henry Frenkle, RL, London, 26 Sept 1979, lot 1284.

272a+ 272+ 268 △ 1'200 (€ 1'080)



3348

Gibbons

Start price
in CHF Start price
approx. €

- 3348** 1 s. brown, wmk. Crown over SA upright, perf. $11\frac{1}{2}$ - $12\frac{1}{2}$, a superb unused block of four of good colour and centering, variety "Imperforate Between Horizontally", marginal from base of sheet and imperforate between stamp and margin, one tone spot on gum otherwise exceptionally fine, large part og. Extremely rare Gi = £ 5'000+.

275b

田*

1'500 (€ 1'350)

3349

- 3349** The set of eleven values, wmk. Crown over SA upright, perf. $11\frac{1}{2}$ - $12\frac{1}{2}$, all on three pieces and pre-cancelled, (6 d. with surface scuff but the £ 1 blue showing damaged "N" in "ONE" flaw), all struck upon receipt from the UPU with "SPECIMEN." handstamps in violet (Samuel NA2) by the Natal Post Office. An attractive and unique set. Cert. BPA (1981).

278/279
spec

△

400 (€ 360)

1902/12, The 'Long' Stamps/thick 'POSTAGE'



3350



3351



3352



3353

- 3350** The unused range with 6 d. blue-green, 8 d. ultramarine, 9 d. rose-lake, 10 d. dull yellow, 10 s. green and £ 1 blue, fresh and fine, large part og. Gi = £ 600+.
- 3351** The set of nine values to £ 1, wmk. Crown over SA upright, perf. 12, fresh and fine, large part og. A fine set Gi = £ 800+.
- 3352** 6 d. blue-green, perf. 12, a fine unused example showing the rare variety "Imperforate between Stamp and Margin at base", fresh and very fine with large part og., matched with an attractive perf. 12½ corner marginal pair from top right of sheet with requisition number "6d. 29017" in black, fresh and fine, large part og.
- 3353** 8 d. bright ultramarine, wmk. Crown over A upright, perf. 12½, an unused block of four from lower left, positions 42 and 52 each showing the variety "Value Closer Together", fresh and fine, unmounted og. Slight stain in margin only, a most attractive positional multiple Gi = £ 100+.

Gibbons

Start price
in CHFStart price
approx. €284/287+
291/292

*

150

(€ 135)

284/292

*

220

(€ 200)

300 var+
300a

*

250

(€ 225)

301+ 301a

田**

100

(€ 90)



3354

- 3354** 9 d. deep lake on thin paper, wmk. Crown over A upright, perf. 12½, Type C with 2½ mm. spacing, a magnificent unused block of sixteen (8 x 2) corner marginal from left of the sheet, of brilliant fresh colour and full unmounted og. Gi = £ 600+.

302ea

田**

150

(€ 135)



3355

Gibbons

Start price
in CHF Start price
approx. €

- | | | | | | |
|-------------|---|---------|------|--------------|-----------|
| 3355 | 9 d. brown-lake, wmk. Crown over A upright, perf. 12, a superb unused block of eight of good colour and centering, variety "Imperforate Between Horizontally", exceedingly fine and very fresh multiple, superb og. with all lower stamps unmounted og. A very rare and most attractive multiple (probably the largest known) in the foremost quality Gi = £ 8'000+. | 302a | 田* | 3'500 | (€ 3'150) |
| 3356 | Second wmk., the unused set of eight values with duplication and perforation varieties, with 3 d. sage-green (8), 4 d. orange (6), 6 d. blue-green (2), 8 d. ultramarine (8, including two pairs), 9 d. lake (7), 1 s. brown (15, including a corner marginal strip of five), 2 s. 6 d. bright violet (10) and 5 s. bright rose (4), largely fresh and fine, large part or unmounted og. Gi = £ 1'500+. | 298/305 | */** | 250 | (€ 225) |

General Official Stamps

Departmental Stamps 1868-1874 see catalogue 230, lot 4501 following!



3358



3357



3359

- | | | | | | |
|-------------|--|-----------------|-----|------------|---------|
| 3357 | 1876/85: 4 d. deep mauve, wmk. Large Star, perf. 10, overprinted O. S. in black, a fine unused block of four, marginal from right of sheet, second stamp showing "Comma for Stop" with stop mostly missing, of good colour and large part og. Scarce Gi = £ 280+. | O17+ O17
var | 田* | 150 | (€ 135) |
| 3358 | 4 d. deep mauve, optd. 'O.S.' in black, perf. 10 x 11½, a magnificent unused horizontal pair of rich colour, right hand stamp with variety: "No Stop after S", fresh and fine, unmounted og. Scarce and attractive multiple. Cert. Ceremuga (2018) Gi = £ 295+. | O17+ O17a | ** | 180 | (€ 160) |
| 3359 | 4 d. deep mauve, optd. 'O.S.' in black, perf. 10 x 11½, a fine unused example with variety "Overprint Inverted" and positional variety "Tops of Letters Sliced Off", of good colour, blunted perfs. at left and without gum but extremely scarce and possibly unique. Cert. Ceremuga (2018) Gi = unpriced unused, £ 275 for 'normal' used. | O17d | (*) | 250 | (€ 225) |



3360



3361

Gibbons

Start price
in CHFStart price
approx. €

- 3360** 6 d. bright blue, optd. 'O.S.' in black, wmk. Broad Star, perf. 11½ x 10, a fine unused example of deep colour, variety "OS Overprint Inverted", a few nibbed perfs, fresh and fine, unused without gum. Rare. Cert. Ceremuga (2018) Gi = listed but unpriced.

Note: Ceremuga: "Extremely rare - the first example in unused condition known to me".

- 3361** 1 s. red-brown, optd. 'O.S.' in black, wmk. Broad Star, perf. 11½ x 12½, a fine unused example of good colour, variety "Overprint Inverted", large part og. A very rare stamp. Cert. Ceremuga (2018) Gi = £ 700.

O18a

(*)

500

(€ 450)

O27a

田*

250

(€ 225)



3362

- 3362** 1876/80: 4 d. brick-red, wmk. Crown over SA, perf. 10, overprinted O. S. in black, an unused block of eight with margin at base, two affected by vertical crease but of good colour and superb large part og. A scarce multiple Gi = £ 600+.

O44h

田*

150

(€ 135)



3363



3364

- 3363** 1891/96: 1 d. deep green, wmk. Crown over SA, perf. 10, overprinted O. S. in black, a fine unused block of four, first stamp with variety "Missing Stop after S", fresh and fine, large part og. Gi = £ 320+.

O54+ O54c

田*

100

(€ 90)

- 3364** 2 d. orange-red, wmk. Crown / wide SA, perf. 15, optd. 'O.S.' in black, a fine unused horizontal pair, variety "Overprint Double", second overprint diagonally struck, fresh and fine, large part og. Extremely rare on unused (unpriced thus in Gibbons). Cert. Ceremuga (2018) Gi = £ 180+ for used.

O57a

*

150

(€ 135)



3365



3366



3367

Gibbons

Start price
in CHF Start price
approx. €

- 3365** 1891/99: 4 d. pale violet, wmk. Crown over SA, perf. 10, overprinted O. S. in black, a fine unused block of six, of good colour with large part og. A fresh and fine multiple Gi = £ 420+.
- 3366** 4 d. slate-violet, wmk. Crown over SA, perf. 13, overprinted O. S. in black, a fine unused example with variety "O. S. Overprint Double", fresh and fine, large part og. Gi = £ 450.
- 3367** 4 d. violet optd. 'OS' in black, perf. 13, overprint shifted downwards, leaving one strike of the 'OS' on each vertical pair, upper pair with horizontal crease not affecting the appearance, fresh and fine, large part or unmounted og. Cert. Ceremuga (2018) Gi = £ 480+.

O61	田*	150	(€ 135)
O69a	*	180	(€ 160)
O69 var	田*/**	200	(€ 180)



3368

- 3368** 1891/95: 2½ d. on 4 d. deep green, wmk. Crown over SA, perf. 10, overprinted O. S. in black, a fine unused block of eight, upper left stamp with variety "2 and ½ Closer Together", fresh and fine, large part og., left hand block unmounted og. Gi = £ 470+.

O71+ O71b	田*/**	150	(€ 135)
-----------	-------	------------	---------



3369



3370



3371



3372

- 3369** 1897/1901: 5 d. brown-purple, perf. 13, overprinted O. S. in black, a fine unused example of good colour, centred to right, variety "No Stop after S", large part og. A very rare stamp Gi = Listed but unpriced.
- 3370** 1899/1901: ½ d. yellow-green, optd. wide 'O.S.' in black, a fine unused example with unlisted variety "Overprint Double" with second overprint shifted slightly upwards and with slightly less inking, fresh and very fine, large part og. Cert. Ceremuga (2018) Gi = unlisted. Note: Ceremuga: "Extremely rare - the first example known to me".
- 3371** 1 d. rosine, optd. wide 'O.S.' in black, two rejoined used examples, showing variety "Overprint Double", one normal, one diagonally misplaced, each stamp lightly cancelled in black (used separately and rejoined). The stamps with minor aging on perfs. but remarkable and rare. Cert. Ceremuga (2018) Gi = £ 950+.
- 3372** 4 d. violet, optd. wide 'O.S.' in black, variety "No Stop after S" and the entire overprint shifted and thus reading "S O.", fresh colour and fine, large part og. An extremely rare variety. Cert. Ceremuga (2018) Gi = £ 250+. Note: Ceremuga: "Extremely rare combination - the only example known to me".

O76a	*	250	(€ 225)
O80 var	*	250	(€ 225)
O81b		300	(€ 270)
O84b var	*	150	(€ 135)

General Official 'Long' Stamps



3373



3374

		Gibbons	Start price in CHF	Start price approx. €
3373	1891: 2 s. 6 d. pale violet, wmk. Crown over SA sideways, perf. 10, overprinted O. S. in black, a fine used example cancelled by part 'Adelaide GPO' cds in black (not c.t.o.), minor bend at base otherwise fresh and very fine, a very rare stamp with just 60 printed. Signed Tommy Allen. Cert. Ceremuga (2018) Gi = £ 5'500.	O87	2'000	(€ 1'800)
3374	5 s. pale rose, overprinted "O.S." in block type in black (with large wide letters and round 'O'), made from the 'Postal Stationery' overprint typeface; wmk. Crown / narrow SA, perf. 10, a used example cancelled by 'Parcel P.O. Adelaide' cds in black (1891, probably August). Minor wrinkles on partially remaining gum on reverse. Just 20 examples are believed to have been overprinted: two were recorded in the Robson Lowe Encyclopædia (page 146), there are now <i>just four examples known</i> . An extraordinary rarity. Cert. Ceremuga (2018). <i>Note: Priced in RL Encyclopædia at £ 30 (RL 101), the same as for SG O87, currently catalogued at £ 6'000.</i>	O87 var	1'000	(€ 900)

Collections

3375	1874/1891: The collection, predominantly unused, with 1874/77 values including fine 2 s. crimson-carmine, 1876/85 values with perf. 10 2 s. carmine in a horizontal pair; perf. 11½-12½ 4 d. violet-slate, 4 d. mauve in a pair, 6 d. blue in a pair, 1 s. red-brown in a pair and a block of four; 2 s. carmine in a pair; 1891/92 (surcharge Type 2) with multiples of the 1 s. value in various shades, similar range for the 2 s. value; 1876/80 issue with 1 d. blue-green in a range of multiples including a perf. 10 block of nine, 2 d. orange-red in a block of nine, 1882 ½ d. on 1 d. pair, 1891/96 2 d. block of four and a pair with one stamp 'No. Stop' variety, 1891/99 bantam ½ d. brown in a block of four, 2½ d. on 4 d. deep green in a pair with additional row of horizontal perforations etc. A highly catalogued collection largely in premium quality throughout (210 items).	O3/O85	田*/**	1'500	(€ 1'350)
3376	1856/1906: Collection with 1856 2 d. red used (3), 1858 2 d. orange-red in a used strip of three and three single examples, 1858 rouletted 1 d. green pairs used (2), 2 d. red in a used strip of three, 6 d. slate in a used pair and 1 s. orange in used pairs (3) and a strip of three, 1860/69 second rouletted issue 1 d. green in an unused pair, 1867/70 perf. x rouletted 1 d. green unused (6, incl. a pair) and used (7), 4 d. dull violet used, 6 d. blue used (6), 1 s. brown used (5); 1870/71 1 d. green used (11 incl. a trimmed cover with two singles), 3 d. on 4 d. in red used (3), 3 d. on 4 d. bright ultramarine unused and used (8), 4 d. unused (2), 6 d. blue unused and used (4), 1 s. chesnut unused and two used pairs; 1870/73 1 d. green unused (4), 4 d. lilac unused (2) and used (5), 2 s. carmine unused and used; 1876/1900 with 3 d. on 4 d. unused (4) and used (4), 4 d. mauve (shades) unused (7) and used (8), 6 d. blue unused (3) and used (5), 8 d. on 9 d. unused (7) and used (9, one with double print variety), 9 d. rose-lilac unused (18 incl. a block of nine) and used (10), 1 s. brown (shades) unused (17) and used (20), 2 s. carmine unused (9) and used (20, incl. a block of six), 1879 6 d. perf. 10 unused and used (5); 1879/87 4 d. unused (17 incl. a block of four) and used (17 incl. a double print), 6 d. unused (14) and used (17) 1 s. unused (4) and used (6), 2 s. unused (7) and used (9); Government reprints overprinted in black (24 stamps); 1886/96 2 s. 6 d., 5 s. (2) and 10 s. unused and a SPECIMEN set to £ 20; 1891 2½ d. on 4 d. in a pane of 60 stamps with two stamps showing missing Fraction Bar variety etc. A generally fine lot with much to attract the specialist (400+ items).		田*/**	1'200	(€ 1'080)