

# COMMONWEALTH OF AUSTRALIA

- 1897** A convention of delegates from each State, except Victoria, meet to draw up a Federal Constitution.
- 1900** The Constitution had been agreed by all States, including Victoria.
- 1901** The Duke of York (later King George V) opened the First Federal Parliament in Melbourne on 1st. May 1901.  
The States continued to print and issue their own stamps, valid only within their State.
- 1902** First issue adopted for and valid in all States except Victoria: the Postage Due issue of 1902.
- 1911** Competition announced for designs for the new ‚Australia‘ stamps, closing date 31 May 1911.
- 1911** Mr. Blamire Young's submitted design for Commonwealth of Australia adhesive stamps is chosen. After various modifications, this design later became known as the famous ‚Kangaroo Series‘.
- 1913** ‚Kangaroo Series‘ issued in 1st. January.
- 1913/14** New definitives: King George V and ‚Laughing Kookaburra‘
- 1914/33** Surface printed George V Issues.



*The Duke of Cornwall and York  
opening the first Federal Parliament*



Essays



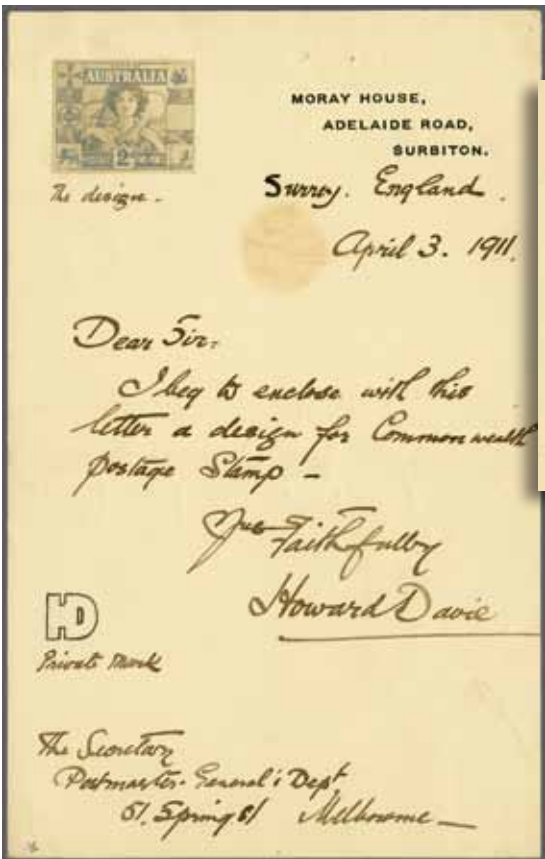
3734

Gibbons

Start price in CHFStart price approx. €

**3734**    **Competition Essays** 1911 (May 31, closing date): Two Essays photographically produced on printed postcards, each for proposed "1d. / One Penny" values with "1d." in six pointed star, each showing Map of Australia with "Postage", "Advance Australia" and "Commonwealth of Australia" tablets, one with Edward VII (looking singularly unhappy) as a vignette; the second with Coat of Arms over Map, each surrounded by Kangaroo and Emu. Both with spike holes in corners and each with notation on reverse "H. Grey Norris, May Terrace, Kensington Park, South Australia" in ink.

Essays    (\*)    **500**    (€ 450)



3735

**3735**    Stamp size photographic Essay, 30 x 24 mm., applied to letter dated April 3, 1911, addressed to the Postmaster General's Department in Melbourne, with the competition entry showing Coats of Arms of the individual States with 'Australia' at top and 'Postage Two Pence' in lower tablet, the vignette of an allegorical 'Australia Fair' with a young lady clutching a scythe. Sent in by one Howard Davie of Surbiton, England. The letter with two pinholes at top and numbered on reverse 35 in pencil. A marvellous and extremely rare document and Essay.

Essay    (\*)    **1'000**    (€ 900)



3736



*Staff preparing advertisements  
for 'The Melbourne Age'*

Gibbons

Start price  
in CHF

Start price  
approx. €

- 3736** Essays (3), all imperforate printed on thin wove paper in purple, with "Postage" at either side of vignette, value tablet (in Boomerang form) empty and "Australia" below the first with a vignette of a Cockatoo; the second in similar form with head of George V facing right, the third with vignette of a Kangaroo. A rare and splendid set. All possibly proposed by E. T. Luke of Montana, Beaconsfield, Victoria who was on the staff of the Melbourne Age Newspaper. Superb and extremely fine group, see lots 4-6 in the Kilfoyle sale for similar examples.

Essays

(\*)

**1'000**

(€ 900)



3737

- 3737** 1903/13: Essays for proposed issues, with 1903 'Advance Australia' pencil Essay on card paper; 1913c. example also in pencil with Kangaroo and Emu with 'One Penny Postage' at top with manuscript "*a suggestion for the Commonwealth Postage Stamp*" and signed at base "*E. F. Nuttall, 2//713*"; two 1 d. Photographic Essays for 1 d. values entered by E. Whitehead & Co.

Essays

(\*)

**250**

(€ 225)

## 1913/35, the Kangaroo and King George V Heads



3738



*Perforating one penny greens*

- 3738** 1912/13: Proof / Colour Trial for proposed 1 d. value, printed in pale yellow green on thick gummed unwatermarked paper, perforated 12½, some minor thinning not apparent from the front of the Proof with large part streaky thick brown gum. Extremely rare - just 8 examples are recorded with a pair in the Kilfoyle collection (lot 21). Extremely rare. BW 3PP2A.

Proof

\*

**500**

(€ 450)

1913, Kangaroo, First Watermark



Die sinking the individual lead matrices used in the form



3739



3742

Gibbons

Start price in CHF Start price approx. €

- 3739 1/2 d. green, Die I, Plate 2, a superb unused corner block of six from lower right corner of the sheet with full "JBC" monogram, of excellent centering, colour and full unmounted og.  
BW 1Azb = \$ 500+.  
Provenance: Collection 'Fordwater', Spink, London, 9 Nov 2011, lot 6.

1 田\*\* 150 (€ 135)



3740



3741



3743

- 3740 1 d. carmine, Die I, a single example with "JBC" monogram on torn margin, variety "Watermark Inverted", gum crease and slight aging, superb og. Perhaps not of the finest appearance but a very rare monogram piece with this variety. BW 2azc.  
3741 2 d. grey, Die I, Plate II, an unused strip of three from lower right corner of the sheet with "JBC" monogram, variety "Watermark Inverted", fresh and very fine, full unmounted og. Rare BW5azb.  
3742 Proof of the 3 d. Kangaroo, Die I, Imperforate, printed in black on blued granite thick safety paper, worn and with surface rubbing but unusual and scarce.  
3743 3 d. olive, Die I, Plate 2, a superb unused example of excellent fresh colour, marginal from base of sheet with "JBC" monogram, very fine, large part og. BW 12zc = \$ 1'000.

2cw \* 150 (€ 135)

3w \*\* 750 (€ 675)

5 Proof 田(\*) 300 (€ 270)

5 \* 200 (€ 180)





3744

Gibbons

Start price  
in CHF      Start price  
approx. €

- 3744** 3 d. olive, Die I, two unused blocks of four of excellent fresh colour, one with slight spot but fine, large part og. Gi = £ 640+.

5

田\*

**150** (€ 135)

3745



3746

- 3745** 5 d. chestnut, Die II, Plate 2, a fine unused example, marginal from base of sheet with "JBC" monogram, of excellent appearance, crease in margin only, large part og. BW 16za = \$ 2'000.  
*Provenance: Collection Lord Cornwallis, Grosvenor, London, 17 March 2011, lot 33.*

8

\*

**300** (€ 270)

- 3746** 6 d. ultramarine, Die II, Plate 2, a superb unused "CA" monogram horizontal strip of three from lower left corner of sheet, fresh and fine, large part og. Scarce and most attractive BW 17z = \$ 6'000.

*Provenance: Collection William & Hugh Morgan, Spink, London, 13 Nov 2012, lot 103.*

9

\*

**1'000** (€ 900)

3747

- 3747** 6 d. ultramarine, Die IIA, the substituted cliché in the Die II plate, a superb unused example, corner marginal from lower right corner of the sheet, trivial age spots not affecting the dramatic appearance, unmounted og. Rare and delightful and surely one of the finest examples known. Cert. Ceremuga (2018) Gi = £ 6'000/ACSC 17(1)ja = \$ 4'500+.  
*Provenance: Collection William & Hugh Morgan, Spink, London, 13 Nov 2012, lot 102.*

9b

\*\*

**2'000** (€ 1'800)



		Gibbons		Start price in CHF	Start price approx. €
3748	1 s. emerald, Die II, an unused horizontal strip of three, marginal from base of sheet with left hand stamp showing "JBC" monogram, somewhat trimmed as usual, third stamp with gum bend and trace of tone spot on top perfs., otherwise fresh and fine, superb og. Extremely rare BZ 30zb = \$ 6'000. <i>Provenance: Collection William &amp; Hugh Morgan, Spink, London, 13 Nov 2012, lot 112.</i>	11	*	1'200	(€ 1'080)
3749	1 s. blue-green, Die II, an unused example with variety "Watermark Inverted", a couple of ragged perfs. at base otherwise fresh and fine, large part og. A rare stamp Gi = £ 1'500/BW 30Ca.	11aw	*	200	(€ 180)



Checking the sheets of stamps

3750	5 s. grey & yellow, Die II, a fine unused example from base of sheet with "JBC" monogram, of excellent fresh colour, light tone spots on gum not affecting the appearance, large part og. Extremely rare - just 6 unused examples are available to collectors, with a further strip of three in the collection of Her Majesty Queen Elizabeth II and a single example in the Australia Post collection. A rarity of the Australian Commonwealth BW 42zc = \$ 25'000. <i>Provenance: Collection Lord Cornwallis, Grosvenor, London, 17 March 2011, lot 61.</i>	13	*	7'500	(€ 6'750)
3751	£ 1 brown & ultramarine, a fine used example of good colour, probably c.t.o., nevertheless a superb example of a scarce stamp Gi = £ 2'500.	15		400	(€ 360)

## 1913/14, Engraved Issues

Gibbons

Start price  
in CHF

Start price  
approx. €

- 3752** **No Watermark** 1913/14: Small group with 1 d. red and 1 d. rose-red in unused blocks of four, together with fine study of Kookabura 6 d. claret with two single examples unused, three unused blocks of four, a used block of four and a registered cover with single 6 d. to Chicago. Generally fine group Gi. = £ 900+.

17/19

✉田\*

**200**

(€ 180)

## 1914/20, King George V Heads, Single Watermark



3753

- 3753** ½ d. bright green, Electro 2, an unused block of six (3 x 2) from lower left of sheet with "JBC" monogram, fresh and fine, with large part og. and lower stamps unmounted og. Scarce. BW 63(2)z.  
*Provenance: Corinphila sale 173, April 2012, lot 955.*

20

田\*

**200**

(€ 180)



3754

- 3754** ½ d. bright green, line perf. 14¼, a fine used example cancelled in black. A scarce and most elusive stamp. Cert. ACSS (1956) Gi = £ 600.

20a

**200**

(€ 180)



Perkins, Bacon & Co. Printers



3755

Gibbons

Start price in CHF      Start price approx. €

**3755** Perkins Bacon Die Proof for the 1 d. value, printed in black on glazed white card paper, 125 x 95 mm., being the original Die Proof, with slight ink smudge on front and reverse with circular 'Perkins, Bacon & Co. Ltd. / PROOF / London S.E. / 14. Southwark Bridge Road' cachet in black. Extremely rare and seldom seen, much less offered. A rarity.

21 Proof      (\*)      **750**      (€ 675)



3756

**3756** Perkins Bacon Proof for the 1 d. value, printed in rose-carmine, Imperforate on thick white glazed card paper, a fine block of four with sheet margin at right. Scarce.

21 Proof      ⌘(\*)      **200**      (€ 180)





3757



3758



3760

- 3757** 1 d. carmine-red, perf.  $14\frac{1}{4} \times 14$ , a fine unused example, marginal from base of sheet with "CA" monogram, fresh and fine, superb large part og. Scarce BW 71z.  
*Provenance: Corinphila sale 173, April 2012, lot 963.*
- 3758** 1 d. carmine-red, Plate 2, perf.  $14\frac{1}{4} \times 14$ , used examples (2), each showing the "Rusted Cliché" variety, positions 34-35 on the right pane, each cds used (position 35 used at George Street), a few small imperfections but generally fine and scarce Gi = £ 900.
- 3759** 1 d. carmine-red, comb perf.  $14\frac{1}{4} \times 14$ , a spectacular block of 30 from lower left of sheet positions 31-36/37-42/43-48/49-54/55-60 left pane, with position 57 showing "CA" monogram, varieties on positions 34, 36 (Saddle on Emu), 40, 41, 49, 55 and 57, some hinge reinforcement but majority unmounted og. Scarce and attractive multiple.
- 3760** 1 d. pale carmine-red, comb perf.  $14\frac{1}{2} \times 14$ , Die II, a fine unused example of excellent colour and centering, superb og. A scarce stamp Gi = £ 425.

Gibbons

Start price  
in CHFStart price  
approx. €

21

\*

**150**

(€ 135)

21ca

**250**

(€ 225)

21c

田\*/\*\*

**200**

(€ 180)

21d

\*

**150**

(€ 135)



3761



3762

- 3761** 4 d. orange, Plate 1, a fine unused block of four from lower left of sheet with "JBC" monogram, fresh and very fine, minor splitting at top left, superb unmounted og., and 4 d. orange horizontal pair from Plate 2, with "CA" monogram from right of sheet, tone spot and perfs. split at margin, large part og. Scarce pairing BW 110(i)z + 110(2)zb.  
*Provenance: Collection Lord Cornwallis, Grosvenor, London, 17 March 2011, lots 222, 223.*
- 3762** 4 d. pale orange-yellow, Plate 1, an unused block of four, marginal from base of sheet with "JBC" monogram, minor gum bend otherwise fresh and fine with large part og. BW110E(1)g/z = \$ 1'200.  
*Provenance: Collection Sir Gawaine Baillie, Sotheby's, Melbourne, 13-15 July 2005, lot 527. Collection 'Fordwater', Spink, London, 9 Nov 2011, lot 206.*

22

田\*

**300**

(€ 270)

22b

田\*

**300**

(€ 270)



3763

3763

4 d. orange, an unused horizontal pair, right hand stamp showing variety 'Line through FOUR of FOUR PENCE', fresh and very fine, large part og. Scarce and attractive pair Gi = £ 350.

Gibbons

Start price in CHF Start price approx. €

22e \*

150 (€ 135)



"Horned Emu"



3764



"Line through  
FOUR PENCE"



"PE" of PENCE  
joined

3764

4 d. orange, a fine unused block of ten (2 x 5), of excellent colour with fourth stamp (Row 2, Stamp 6) showing "Line Through FOUR PENCE", fifth stamp with "Horned Emu" flaw and tenth stamp showing "PE" of PENCE joined, fresh and very fine multiple, some reinforcement, large part or unmounted og. Rare BW 110(2)h+j+m.

22+ 22e 田\*/\*\*

350 (€ 315)



"Damage to NW corner"  
plate flaw



3765

Gibbons

Start price  
in CHF      Start price  
approx. €

- 3765** 5 d. bright chestnut, line perf.  $14\frac{1}{4}$ , an unused horizontal strip of three from lower left of sheet with "CA" monogram, the monogram stamp with "Damage to NW corner" Plate Flaw, some reinforced perfs., fresh colour, large part og. Scarce BW 122Bz = \$ 1'000.  
Provenance: Collection 'Fordwater', Spink, London, 9 Nov 2011, lot 214.

23

\*

**200** (€ 180)



3766

- 3766** 5 d. brown, comb perf.  $14\frac{1}{4} \times 14$ , a fine unused horizontal pair from lower right of sheet with "JBC" monogram, fresh and very fine, unmounted og. Scarce BW 123zb.  
Provenance: Collection Lord Cornwallis, Grosvenor, London, 17 March 2011, lot 239.

23b

\*\*

**200** (€ 180)



3767

- 3767** 5 d. brown, comb perf.  $14\frac{1}{4} \times 14$ , an unused block of four of excellent colour and centering, variety "Watermark Inverted", minor diagonal bend affects one stamp but not the frontal appearance, fresh and very fine, superb og. Rare Gi = £ 3'000+.

23bw

田\*

**500** (€ 450)

- 3768**  $\frac{1}{2}$  d. green (shades) unused examples (4) incl. one with inverted watermark, 1 d. carmine, comb. perf. unused (5), 4 d. orange unused (8) with all five shades between SG 22/22d, also 5 d. brown with one line and one comb perf. example unused. Fresh and fine, large part og. Gi = £ 600+.

20/23

\*/\*\*

**150** (€ 135)

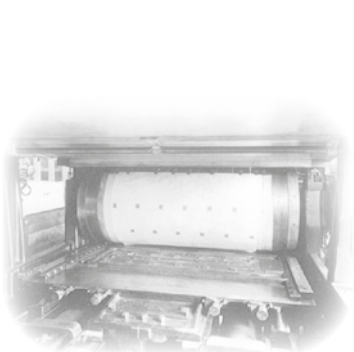


1915, Kangaroo, Second Watermark



3769

- 3769** 2 d. grey, Die I, an unused block of eight (4 x 2) from base of sheet, divided by interpanneau margin and vertically creased through margin, of excellent colour and fine, large part or unmounted og. A scarce and most attractive multiple *Gi* = £ 800+.



Printing the stamps on a Miehle printing press

Gibbons	Start price in CHF	Start price approx. €
---------	-----------------------	--------------------------

24	田*/**	<b>300</b>	(€ 270)
----	-------	------------	---------



3770

- 3770** 2½ d. indigo, Die II, Plate 2, an unused horizontal pair centred to left, marginal from base of sheet with "CA" monogram, fresh and fine, large part og. Scarce *BW* 10zc = \$ 1'250.  
*Provenance: Collection William & Hugh Morgan, Spink, London, 13 Nov 2012, lot 148.*

25	*	<b>300</b>	(€ 270)
----	---	------------	---------



3771

- 3771** 6 d. ultramarine, Die II, an unused horizontal strip of four, corner marginal from lower left of sheet with "CA" monogram, fresh and fine, minor diagonal gum crease, fine unmounted og. Rare and splendid multiple *Gi* = £ 800/*BW* 18z.

26	**	<b>250</b>	(€ 225)
----	----	------------	---------





3772

Gibbons

Start price  
in CHF      Start price  
approx. €

- 3772** 1 s. blue-green, Die II, a fine unused example, marginal from base of sheet with "JBC" monogram, fresh and very fine, superb og. Extremely rare BW 31ze = \$ 6'000.  
Provenance: Collection 'Fordwater', Spink, London, 9 Nov 2011, lot 85.

28

\*

**2'000** (€ 1'800)



3773

- 3773** 2 s. brown, Die II, a fine unused example of good colour, fresh and very fine, large part og. A scarce stamp Gi = £ 700.

29

\*

**200** (€ 180)



3774

- 3774** 5 s. grey & yellow, Die II, an unused horizontal pair, marginal from base of sheet with "CA" monogram, centred to left, of excellent colour, fresh and very fine, large part og. A very scarce pair, just 9 examples with monogram recorded unused BW 43za = \$ 20'000+.  
Provenance: Collection William & Hugh Morgan, Spink, London, 13 Nov 2012, lot 174.

30

\*

**5'000** (€ 4'500)

1915/27, Kangaroo, Third Watermark



3775



3777

**3775** 2 d. silver-grey, Die IIA, a fine unused example, marginal from base of sheet with "CA" monogram, fresh and very fine, large part og. Scarce BW 8za.

Gibbons

Start price in CHF Start price approx. €

35d

\*

150

(€ 135)



3776



3778

**3776** 2½ d. deep blue, Die II, a fine unused block of four from base of sheet, divided by interpanneau margin with full T. S. HARRISON imprint, fresh and very fine, large part og. with lower pair unmounted og. Scarce and very fine BW 11zh.

**3777** 2½ d. indigo, Die II, a fine unused block of four, well centred and of good colour, variety "Watermark Inverted", fresh and fine, one stamp with slight gum skip, large part og. Scarce and attractive multiple Gi = £ 520+/BW 11a = \$ 500.

**3778** 3 d. yellow-olive-green, Die I, Plate 2, a fine unused block of eight (4 x 2), divided by interpanneau margin, with full T. S. HARRISON imprint, one tone spot on one perf., otherwise of fresh colour with large part og. and left hand block unmounted og. Very scarce BW 13zi = \$ 3'000.

Provenance: Collection Lord Cornwallis, Grosvenor, London, 17 March 2011, lot 104.

36

田\*/\*\*

200

(€ 180)

36aw

田\*

200

(€ 180)

37

田\*/\*\*

1'000

(€ 900)



3779



3781

Gibbons      Start price in CHF      Start price approx. €

**3779** 3 d. light olive, Die IIB, a fine unused horizontal strip of four divided by interpanneau margin, with full T. S. HARRISON imprint, one tiny age spot on gum, creased down the interpanneau margin, of fresh colour with large part og. Scarce and attractive strip BW 14z = \$ 2'500.  
*Provenance: Collection Lord Cornwallis, Grosvenor, London, 17 March 2011, lot 105.*

37e      \*      **250** (€ 225)



"Leg of Kangaroo Broken"



3780



3782

**3780** 6 d. ultramarine, Die II, Plate 1, a fine unused block of four from upper right corner of the sheet, with second stamp showing "Leg of Kangaroo Broken" Plate flaw, some marginal bends and gum creasing, mounted in margin only, stamps unmounted og. Rare and most attractive multiple Gi = £ 2'250+/BW 20d.  
*Provenance: Collection Lord Cornwallis, Grosvenor, London, 17 March 2011, lot 113.*

38da+ 38      田\*\*      **750** (€ 675)

**3781** 9 d. violet, Die II, Plate 1, a fine unused example, marginal from base of sheet with "JBC" monogram, fresh and fine, large part og. BW 26ze = \$ 1'750.

39      \*      **300** (€ 270)

**3782** 9 d. violet, Die II and Die IIB, a fine unused block of eight from base of sheet divided by interpanneau margin, with full T. S. HARRISON imprint, with upper row all Die II but showing third stamp Die IIB, lower row all Die IIB with third stamp Die II; with variety "Inverted Watermark", reinforced and with thins in margin at base, large part og. Scarce and most attractive multiple Gi = £ 2'475/BW 27za.

39aw+ 39bw      田\*      **500** (€ 450)





Thomas S. Harrison



3783

Gibbons

Start price  
in CHF

Start price  
approx. €

- 3783** 1 s. blue-green, Die II, an unused horizontal pair from base of sheet divided by interpanneau margin, with full T. S. HARRISON, COMMONWEALTH STAMP PRINTER single line imprint, fresh and fine with large part og. Extremely rare BW32zi.  
*Provenance: Collection Lord Cornwallis, Grosvenor, London, 17 March 2011, lot 124.*

40

\*

**2'500** (€ 2'250)

3784



3785



3786

- 3784** 1 s. blue-green, Die IIB, an unused block of four from base of sheet divided by interpanneau margin, with full A. J. MULLETT imprint, fresh and very fine, minor hinge browning, large part og. A very scarce multiple BW 33zb = \$ 1'000.  
*Provenance: Collection Lord Cornwallis, Grosvenor, London, 17 March 2011, lot 129.*
- 3785** 1 s. blue-green, Die IIB, unused examples (20) all in five blocks of four, one corner block from lower right corner of the sheet showing 'Double Perforation' variety with upright watermark, other blocks all wmk. sideways, generally fresh and fine, large part or unmounted og. A scarce group Gi = £ 1'200+.
- 3786** 1 s. blue-green, Die IIB, unused blocks of four (2), one marginal from base of sheet with upright watermark, the other from top left hand corner of the sheet with "Watermark Sideways", each fresh and fine, large part or unmounted og. Gi = £ 540+.
- 3787** Kangaroo range of unused with 2 d. grey (3) with Die I and Die II examples, 2½ d. deep blue Die II unused single, block of six and a block of four in the indigo shade; 3 d. yellow-olive Die I unused singles (3) one with inverted watermark; 6 d. ultramarine Die II unused examples (5) in varying shades incl. one interpanneau pair; 9 d. violet Die II and Die IIB unused; 1 s. blue-green Die II unused (2) and Die IIB unused, generally fresh and fine group Gi = £ 1'200+.

40b

田\*

**300** (€ 270)

40b var +

40ba

田\*/\*\*

**250** (€ 225)

40b+ 40ba

田\*/\*\*

**150** (€ 135)

35-40b

田\*

**250** (€ 225)





3788

Gibbons

Start price  
in CHF      Start price  
approx. €

- 3788** 2 s. brown, Die II, a fine unused horizontal pair, marginal from base of sheet and divided by interpanneau margin, with full T. S. HARRISON, COMMONWEALTH STAMP PRINTER single line imprint, fresh and extraordinarily fine, superb og. Extremely rare BW 37zi.

*Provenance: Collection Lord Cornwallis, Grosvenor, London, 17 March 2011, lot 135.*

41

\*

**5'000** (€ 4'500)



3789



3790



John Ash

- 3789** 5 s. grey & yellow, Die II, an unused block of four, of fresh colour, well centred, fresh and fine but for small internal gum bend on one stamp, large part or unmounted og. A most attractive multiple Gi = £ 1'000+.

42

田\*/\*\*

**250** (€ 225)

- 3790** 5 s. grey & orange, Die II, a fine unused block of four, marginal from base of sheet, divided by interpanneau margin with full JOHN ASH imprint, right hand stamp with "Beach off NSW Coastline" Plate flaw, diagonal gum crease not detracting from appearance, fresh and fine with vibrant colour and large part og. Rare BW 44ze.

42a

田\*

**400** (€ 360)



3791

- 3791** 5 s. grey & pale yellow, Die II, a fine unused example with variety "Kangaroo with Broken Ear", Right Pane, Row 8, Stamp 5. Fresh and fine, large part og. Scarce.

42c var

\*

**150** (€ 135)

- 3792** 5 s. grey & yellow (shades), the unused study (14 examples) with single examples (8) in a range of differing shades (one with variety 'Left Ear Broken on Roo'), a vertical pair in a pale shade with upper stamp showing 'Fox-faced Roo' variety and a fine well centred block of four, generally fine to superb og. throughout, a scarce group Gi = £ 3'750+.

42+ 42a+

42b+ 42c

田\*

**1'000** (€ 900)



3793



3794



3795

Gibbons

Start price  
in CHFStart price  
approx. €

**3793** 10 s. grey & pink, Die II, the three shades (grey & pink, bright aniline pink and pale aniline pink), all in fine unused condition, generally well centred and with large part og. Trivial imperfections, a fine reference set Gi = £ 1'500+.

43a+ 43b+  
43c

\*

**500**

(€ 450)

**3794** £ 1 chestnut & bright blue, a fine unused example, well centred with variety "Watermark Inverted" and part marginal watermark on stamp, fresh colour and fine, large part og. A lovely example of a very scarce stamp Gi = £ 4'500.

44aw

\*

**1'500**

(€ 1'350)

**3795** £ 2 purple-black & pale rose, Die II, a fine used example, lightly cancelled by part c.t.o. cds. Gi = £ 2'750.

45b

**500**

(€ 450)



"Broken Tail  
to Kangaroo"



3796



3797



**3796** £ 2 black & rose, Die II, a fine unused example of good strong colour overprinted SPECIMEN in black (Type B), showing variety "Broken Tail to Kangaroo", fine and scarce, large part og.

45b spec

田\*

**200**

(€ 180)

**3797** 10 s. grey & bright pink, £ 1 chocolate & dull blue and £ 2 black & rose, all Die II, the set of three values overprinted SPECIMEN in black (length 14.5 x height 2.5 mm.). Fresh and fine, large part og. Gi = £ 850.

43s/45s spec

\*

**200**

(€ 180)

## 1916/18, King George V Heads, Rough Unsurfaced Paper, Second Watermark



3798

**3798** 1916/18: 1 d. deep scarlet, Plate 4, a magnificent unused block of twelve (6 x 2), corner marginal from lower left of sheet, with "CA" monogram, of exceptional colour and showing "Watermark Inverted" variety, superb and fresh, large part og. with lower six stamps unmounted og. A wonderful multiple Gi = £ 720+/BW 72A(4)a/z = \$ 800+.  
Provenance: Collection 'Fordwater', Spink, London, 9 Nov 2011, lot 221.

47hw 田\*/\*\*

**500**

(€ 450)



3799

Gibbons		Start price in CHF	Start price approx. €
47 var	*	150	(€ 135)

**3799**    **Rough Unsurfaced Paper, Second Watermark** 1916/18: 1 d. carmine-red, a fine unused example from Pane 1, marginal from base of sheet with "CA" monogram, large part og. Scarce. Cert. SPRS (2005) BW 72Pza.  
*Provenance: Corinphila sale 173, April 2012, lot 995.*

1918/20, Cooke Printing

**3800**    ½ d. green, the album page with two marginal blocks of four and two corner blocks of twelve, all showing either the "CA" and "JBC" monograms (two of each), one block showing the "É" flaw in POSTAGE, some splitting on the large "CA" multiple, otherwise fresh and very fine, large part or unmounted og. A scarce group BW 65(4)z.za.zb.zc.  
*Provenance: Collection 'Fordwater', Spink, London, 9 Nov 2011, lot 239.*

48	田*/**	250	(€ 225)
----	-------	-----	---------

1918/20, Multiple Crown over A Watermark



3801



Miehle printing machine

**3801**    1 d. carmine, a fine unused block of four from base of sheet, divided by interpanneau margin, with full T. S. HARRISON imprint perforated through, fresh and fine, large part og. with upper pair unmounted og. Scarce.

50	田*/**	150	(€ 135)
----	-------	-----	---------



## 1918, Cooke Provisional Printing on War Savings Paper



3802

Gibbons

Start price  
in CHF

Start price  
approx. €

- 3802** 1 d. rose-red, Die III, an unused horizontal strip of three from lower left corner of sheet, with "JBC" monogram, centred to top with fresh colour, minor natural gum bends and large part reinforced og. Scarce and most unusual multiple BW 75Az = \$ 3'000.  
Provenance: Collection 'Fordwater', Spink, London 9 Nov 2011, lot 248.

53

\*

**500** (€ 450)

## 1918/23, Return to Single Watermark



"RA" of AUSTRALIA joined



"Kangaroo's Tongue Out"



3803

- 3803** 1 d. violet, a fine unused block of eight from base of sheet, divided by interpanneau margin with full T S. HARRISON imprint, creased thought the interpanneau margin as usual, with position 60 (left pane) showing Plate Flaws "RA" of AUSTRALIA joined and position 56 (right pane) with "Kangaroo's Tongue Out". Fresh and fine, unmounted og.

57

田\*/\*\*

**150** (€ 135)

- 3804** 2 d. brown-orange, a fine unused block of four marginal from base of sheet, divided by interpanneau margin with full T. S. HARRISON imprint perforated through, some reinforcement and thin in margin, large part og, lower pair unmounted og. Scarce BW 95z = \$ 1'500.

Provenance: Collection William & Hugh Morgan, Spink, London, 14 Nov 2012, lot 504.

62

田\*/\*\*

**250** (€ 225)



3804





Plate Flaw  
"FOUR PENCE"  
in thinner lettering



3805

- 3805** 4 d. violet, a fine unused example showing Plate Flaw "FOUR PENCE" in thinner lettering (Plate 2, Right Pane, Row 2, Stamp 6), fresh and very fine, superb unmounted og. A scarce stamp Gi = £ 475/BW 111(2)e = \$ 450.

Gibbons

Start price  
in CHFStart price  
approx. €

64b

\*\*

**150**

(€ 135)



Albert James Mullett  
Government Printer to the Commonwealth  
and Victoria (1913-1924)



Damaged "1"



3806

- 3806** 1 s. 4 d. pale blue, a fine unused horizontal strip of six marginal from base of sheet, divided by interpanneau margin with full A. J. MULLETT imprint perforated through, sixth stamp with "Damaged '1' at right" Plate Flaw, fresh and very fine, some reinforcement, large part og. Scarce and most attractive multiple.

Provenance: Collection William & Hugh Morgan, Spink, London, 14 Nov 2012, lot 583.

66

\*

**200**

(€ 180)

## 1923/24 Kangaroo, Third Watermark



3807

- 3807** 6 d. chestnut, small unused group with single in a deep shade with "Broken Leg to Kangaroo" variety, the same variety in a pair with normal in a paler shade, and a horizontal pair divided by interpanneau margin with full T. S. HARRISON imprint perforated through, all fresh and fine, large part og.

Provenance: Corinphila sale 173, April 2012, lot 1003.

73

\*

**150**

(€ 135)



3808

Gibbons

Start price in CHF    Start price approx. €

**3808** 2 s. maroon, Die II, a fine unused block of four, variety "Watermark Inverted", fresh and very fine, well centred and of fresh appearance, some reinforcement but with large part og. and one stamp unmounted og. Extremely rare Gi = £ 9'000+.

74w    田\*/\*\*    **2'500** (€ 2'250)



3809

**3809** £ 1 grey, a fine unused block of four, marginal from base of sheet, divided by interpanneau margin with T. S. HARRISON imprint (not complete) perforated through, fresh deep colour and very fine, with two stamps unmounted og. Rare. Signed A. Diena Gi = £ 2'600+.

75    田\*/\*\*    **1'000** (€ 900)



3810

**3810** The set of three values, 6 d. chestnut, 2 s. maroon and scarce £ 1 grey, all in unused blocks of four, the £ 1 with two stamps affected by vertical crease otherwise fresh and fine, large part or unmounted og. Gi = £ 3'000.

73/75    田\*/\*\*    **750** (€ 675)

## 1924/26, King George V Heads, Second Watermark

Gibbons

Start price  
in CHF

Start price  
approx. €

- 3811** 1 d. sage green, no wmk., a fine block of 18 divided by interpanneau margin with T. S. HARRISON imprint, together with October 1926 1 d. sage-green in two marginal interpanneau pairs, one with A. J. MULLETT imprint (with "RA" joined in AUSTRALIA variety on left stamp), and the other, perforated through, with JOHN ASH imprint. Fresh and fine, large part or unmounted og. Gi = £ 250+.

83+ 86+ 86d 田\*\* 120 (€ 110)

## 1926/30, Multiple Crown & A Watermark



3812



3813

- 3812** 1½ d. scarlet, perf. 14, a fine unused block of four, marginal from base of sheet and divided by interpanneau margin, showing full A. J. MULLETT imprint perforated through, variety "Watermark Inverted", fresh and fine but for light gum crease, large part og. with three stamps unmounted og. Gi = £ 120+/BW 91za = \$ 400.
- 3813** 4 d. yellow-olive, perf. 14, a fine unused block of eight, marginal from base of sheet and divided by interpanneau margin, showing full JOHN ASH imprint perforated through, fresh and very fine, unmounted og. Scarce and most attractive Gi = £ 440+/BW 115z.

87w 田\*\* 150 (€ 135)

91 田\*\* 250 (€ 225)



3814

- 3814** 2 d. golden scarlet, Die III, perf. 13½ x 12½, an unused block of four, variety "No Watermark", of fine fresh appearance, somewhat heavily mounted but extremely rare Gi = £ 5'200+.  
*Provenance: SG, London, 5 May 1978.*

99ab 田\* 1'500 (€ 1'350)





3815



3816

- 3815** 4 d. yellow-olive, perf. 13½ x 12½, an unused imprint block of four separated by interpaneau margin, with full JOHN ASH imprint at base, minor vertical bend in margin only, fresh and fine, large part og. with lower pair unmounted og.
- 3816** 4½ d. violet, Die I, perf 13½ x 12½, a fine unused block of four, marginal from base of sheet and divided by interpaneau margin, showing full JOHN ASH imprint perforated through, fresh and fine, large part og. Gi = £ 280+/BW 120Az.  
*Provenance: Corinphila sale 173, April 2012, lot 1017.*

Gibbons		Start price in CHF	Start price approx. €
102	田*/**	150	(€ 135)
103	田*	150	(€ 135)



3817

- 3817** 1 s. 4 d. turquoise, perf. 13½ x 12½, a fine unused interpaneau marginal horizontal pair with full JOHN ASH monogram perforated through, fresh and fine, superb og. BW130Az / Gi = £ 240+.  
*Provenance: Corinphila sale 173, April 2012, lot 1019.*

104	*	120	(€ 110)
-----	---	-----	---------



## 1927, Opening of Parliament House, Canberra

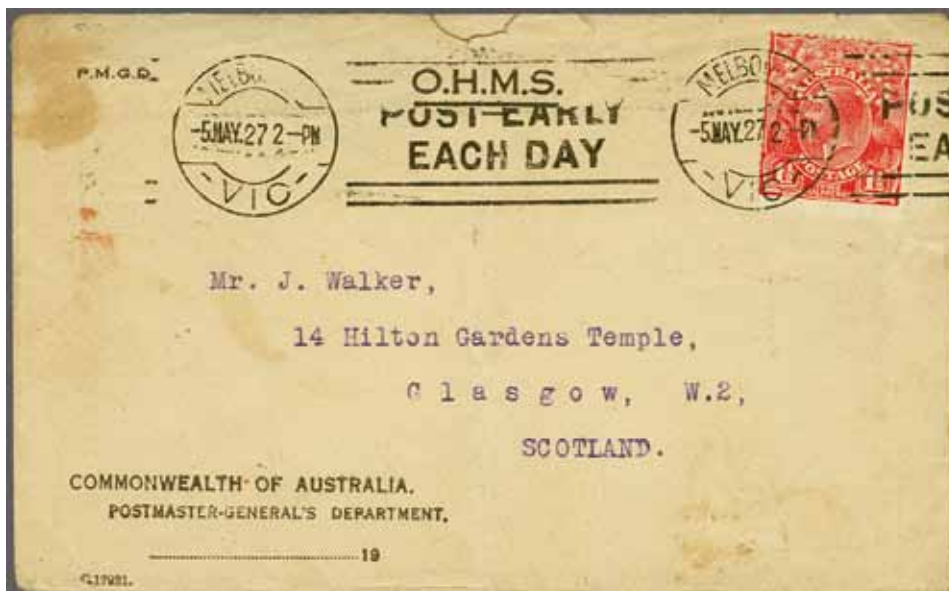
Gibbons

Start price  
in CHF

Start price  
approx. €

- 3818** 1926/28: Competition Essays, the collection with 1½ d. values (four different) produced for the 'Opening of Parliament' and proposed by A. Y. Shearsby of Yass, NSW; further larger photographic reproduction of a design by E. T. Luke also for the Opening; 1928 Essay for 1½ d. Airmail value with aeroplane, Kangaroo and Emu signed "*Kinross, 1928*" at base; photographic Essay for 1½ d. value with Kookaburra and offspring by H. Perry on thick card with 'Mirrabooka No.1' at base; another design (Mirrabooka No.2) with Merino Sheep also by Perry; further photographic and ink designs (6) in red or blue submitted during the 1928 Melbourne Philatelic Exhibition. A most interesting collection.

(\*) **500** (€ 450)



ex 3819

- 3819** Essay 1½ d., hand-painted in red on small card, 28 x 40 mm., with two frames containing POSTAGE under the value, Arms flanked by Kangaroo and Emu and ADVANCE AUSTRALIA above CANBERRA 1927 legend at base. A charming and fine Essay, with original typed letter headed PMG's Department "Canberra Commemorative Postage Stamp Design Competition" written on May 9, 1927 thanking Mr. J. Walker of Glasgow for his design and sending him an unused issued 1½ d. brownish lake together with a used example with 'Canberra' First Day of Issue cds; together with the original envelope sent to Glasgow franked by 1½ d. Official cancelled on May 5, 1927. An extraordinary group.

105 Essay (\*) **1'500** (€ 1'350)



Opening day of the  
Canberra Parliament House



3820

Gibbons

Start price  
in CHF

Start price  
approx. €

**3820** 1½ d. brownish-lake, block of four with variety "Imperforate Between Vertically", fresh and fine but for one toned perforation at top, superb og. with lower pair unmounted og. A great rarity of Australian philately Gi = £ 24'000.  
*Provenance: Bridger & Kay auction, 25-26 April 1979, lot 582.*

105b 田\*/\*\*

**10'000** (€ 9'000)



3821

Gibbons	Start price in CHF	Start price approx. €
SB22	100	(€ 90)

3821 Commemorative Booklet with illustration of HMS Renown on reverse, containing two panes of eight 1 1/2 d. brownish-lake (Gi. 105), all individually cancelled by "Canberra" First Day of Issue (May 9, 1927) datestamps in black. The staple slightly rusted but seldom encountered thus.

1929/30, Kangaroo, Typographed by J. Ash, Multiple Crown & A Watermark



3822

107	田*/**	150	(€ 135)
107/110	田*/**	300	(€ 270)

3822 1929/30: Typographed by J. Ash, wmk. Multiple Crown & A, 6 d. chesnut, Die IIB, a fine unused block of eight from base of sheet divided by interpanneau margin, with full JOHN ASH imprint, fresh and very fine, superb og. with five stamps unmounted og. Gi = £ 280+/BW22z = \$ 350+.

3823 Typographed by John Ash, Multiple Crown & A watermark, the selection of multiples with 6 d. chesnut in blocks of four (2, one is marginal), 9 d. violet in blocks of four (2, one is top marginal), 9 d. violet in a spectacular corner marginal block of twelve from top left corner of the sheet; 1 s. blue-green in a block of four and 2 s. maroon in marginal blocks of four (2). Largely fresh and very fine, large part or unmounted og. Gi. = £ 2'000+.





3824

Gibbons      **Start price**      *Start price*  
in CHF      approx. €

**3824**      Typographed by John Ash, Multiple Crown & A watermark, 5 s. grey & yellow, Die II, a superb unused block of four from upper left of sheet, of excellent colour and large part og. with upper pair unmounted og. A scarce and most attractive multiple Gi. = £ 1'000+.

111      田\*/\*\*      **200**      (€ 180)



3825

112      田\*\*      **600**      (€ 540)

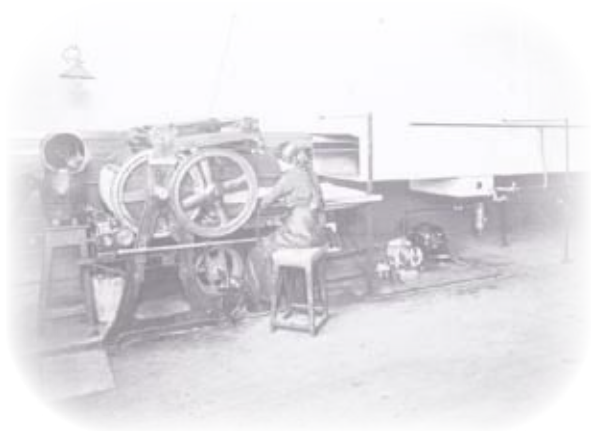
**3825**      Typographed by J. Ash, wmk. Multiple Crown & A, 10 s. grey & pink, Die II, a fine corner marginal block of four from upper left corner of sheet, fresh and fine, mounted in margin only, stamps unmounted og. Gi = £ 1'900+./BW 49.



3826

114      **200**      (€ 180)

**3826**      £ 2 black & rose, Die II, perf. 12, a used example lightly if unclearly, cancelled in black. Gi = £ 750.



*Gumming the stamp paper*



3827

Gibbons  
Start price in CHF    Start price approx. €

3827    Typographed by J. Ash, wmk. Multiple Crown & A, £ 2 black & rose, Die II, a splendid unused block of four from top of sheet, centred to top and of excellent vibrant colour, superb og. A remarkable and lovely multiple    Gi = £ 18'000+.

114    田\*    5'000    (€ 4'500)

1931/36, King George V Heads, Watermark Crown C of A



3828



3829

- 3828** ½ d. to 1/4 d., wmk. C of A, perf. 13½ x 12½, the complete set of eight values in blocks of four, seven values in corner blocks of four from top of sheet, the 1½ d. in an interpanneau JOHN ASH imprint block of four, all fresh and very fine, large part or unmounted og. Gi = £ 520+.
- 3829** ½ d. orange to 1 s. 4 d. turquoise, wmk. C of A, the complete set of eight values, all in unused marginal blocks of four from base of sheet, divided by interpanneau margin, all with full JOHN ASH imprint either imperf. or perforated through, fresh and fine superb og. or unmounted og. A wonderful set Gi = £ 520+.

Gibbons		Start price in CHF	Start price approx. €
124/131	田*/**	200	(€ 180)
124/131	田*/**	400	(€ 360)

1931/36, King George V Head 3d. ultramarine, Watermark inverted



3830

- 3830** 3 d. ultramarine, Die II, wmk. C of A, perf. 13½ x 12½, a fine example centred to right, variety "Watermark Inverted", fresh and very fine used. A rare stamp with, currently, just 16 examples recorded. Cert BPA (2010). Gi = £ 16'000/BW 109a.

128w	500	(€ 450)
------	-----	---------



## 1931/36, Kangaroo, Watermark Crown C of A



"Open Mouthed Kangaroo"



3831



3832



"Open Mouthed Kangaroo"

Gibbons

Start price  
in CHFStart price  
approx. €

- 3831** 5 s. grey & yellow, Die II, a fine unused block of four from base of sheet divided by interpanneau margin, with full JOHN ASH imprint, lower right hand stamp with "Open Mouthed Kangaroo" flaw, fresh and fine, large part og. with left hand pair unmounted og. Scarce Gi = £ 680+/BW 46z.

*Provenance: Collection Lord Cornwallis, Grosvenor, London, 17 March 2011, lot 189.*

135

田\*/\*\*

**350**

(€ 315)

- 3832** 10 s. grey & pink, Die II, a superb unused horizontal pair from base of sheet divided by interpanneau margin, with full JOHN ASH imprint perforated through, lower right hand stamp with "Open Mouthed Kangaroo" flaw, centred to top but of brilliant vibrant colour and slight browned large part og. with lower pair unmounted og. Rare Gi = £ 1'700+/BW 50z. *Provenance: Collection Lord Cornwallis, Grosvenor, London, 17 March 2011, lot 192.*

136

田\*/\*\*

**400**

(€ 360)



3833

- 3833** £ 2 black & rose, Die II, a used horizontal strip of three, some minor staining, cancelled by GPO Melbourne datestamps. Despite minor imperfections a scarce commercial usage Gi = £ 1'800.

138

**300**

(€ 270)

## Later Issues



3834

- 3834** 1941: 2½ d. on 2 d. scarlet, an unused horizontal pair, left hand stamp showing "Medallion Flaw", fresh and fine, large part og. Gi = £ 450.

200b+ 200

\*

**150**

(€ 135)



3835



3836



3838

- 3835** 1950: Centenary of First Adhesive Postage Stamps in Australia 2½ + 2½ d. maroon, Die Proof on white wove paper mounted in sunken card frame (99 x 85 mm.). Just eight Die Proofs were prepared for presentation purposes. This is numbered "10" and dated in manuscript "5.7.50" on reverse. With letter (addressee's name excised) from PMG's office dated 23 August 1950. Very rare.
- 3836** 1955: South Australia Stamp Centenary 3½ d. green, Die Proof on white wove paper mounted in sunken card frame (88 x 115 mm.), Just eight Die Proofs were prepared for presentation purposes. This is numbered "50" and dated in manuscript "12.9.55" on reverse. With letter (addressee's name excised) from PMG's office dated 18 October 1955. The Proof with stain at top but very rare BW 330DP(1) = \$ 3'000.

Gibbons		Start price in CHF	Start price approx. €
239a Proof	(*)	500	(€ 450)
288 Proof	(*)	300	(€ 270)



3837

- 3837** 1957: Christmas 3½ d. red and 4 d. purple, Die Proofs on white wove paper, both mounted in sunken card frames (125 x 90 mm.), the 3½ d. with some aging within the frame and the 4 d. very fine. Eight Die Proofs were prepared for presentation purposes, the 3½ d. is numbered "14" on reverse and the 4 d. numbered "21", each dated "20.8.57" in manuscript. Some staining on reverse where mounted into album but very rare. BW338DP(1)+339DP(1) = \$ 6'000.
- 3838** 1960: Queensland Stamp Centenary 5 d. deep myrtle green, Die Proof on white wove paper mounted in sunken frame (88 x 95 mm.). Eleven Die Proofs were prepared for presentation purposes. This is numbered "32" on reverse and dated in manuscript "12.7.60" in ink. Rare and most attractive, with part letter from the PMG's department but the addressee's name excised BW 380DP(1) = \$ 3'000.

298+ 299 Proofs	(*)	250	(€ 225)
337 Proof	(*)	350	(€ 315)

		Gibbons		Start price in CHF	Start price approx. €
3839	1913/30: Collection with early Commonwealth period largely unused unless stated, including 1913 5 s. grey & yellow used with single and cto pair, 1918/20 Cooke printing ½ d. block of four and a pair with "Thin 1 in Fraction" variety, 1 d. single examples (7), 1½ d. brown in both shades (4, one with inverted wmk.), 1918/23 with set of eleven and duplication including 4 d. ultramarine with inverted wmk., 1923/24 6 d. in ASH and MULLETT imprint blocks of four, 2 s. in ASH and MULLETT imprint pairs and scarce £ 1 grey; 1924 set with 1 d. sage in A. J. MULLETT imprint block of eight, 1½ d. with HALEPENCE variety in block of six, 3 d. dull ultramarine in a marginal block of four, 4 d. olive-yellow in a marginal block of eight, 1926/30 with set of eight to 1 s. 4 d. including 2 d. red brown in a A. J. MULLETT marginal imprint block of eight; perf. 13½ x 12½ set of eleven to 1 s. 4 d. including marginal 3 d. dull ultramarine with wmk. inverted variety. Generally fine, a splendid collection for the specialist (128 items incl. 30 blocks of four or larger).				
		11-104	田*/**	2'000	(€ 1'800)
3840	1927/1971: Unused collection, with a fine basic run of issues mostly in blocks of four, with 1928 Kookaburra 3 d. blue sheetlets of four in a block of four (Gi MS106a) and a further sheet containing nine blocks of four; 1929 Centenary 1½ d., Plates 1-4 NW corner blocks of four and imprint block of eighteen with re-entry; 1931/36 'C of A' set to 1/4 d. complete and 'Roo values complete to £ 1 grey and 10 s. £ 2 values in SPECIMEN set of three (3 sets); 1931 Kingsford Smith re-entry on 3 d., 1932 Lyrebird block of four; Sydney Harbour Bridge 5 s. imprint strip of three (minor perf. split and gum aged); 1934 Macarthur 2 d. Type II, 3 d. and 9 d. in John Ash imprint blocks, Silver Jubilee set in blocks (2 sets), 1938/49 £ 1 bluish slate in blocks of four (3, one with imprint) and single optd. SPECIMEN (Gi 178s = £ 800), 1930 2 d. with 'Tail Flaw' used, 1940 Imperial Forces set in imprint blocks, 1948/1951 5 s. - £ 2 in imprint blocks (thus the £ 2 green showing the 'Roller Flaw' variety on two stamps) and Specimen set of three etc. A fine highly catalogued collection mostly in the foremost quality.				
		105/371	田*/**	2'000	(€ 1'800)

## Postage Due Stamps



3841



3842

3841	1902: 6 d. emerald-green, wmk. Crown over NSW upright, perf 11½, 12, a fine unused block of four, of superb colour and centering, full unmounted og. Gi = £ 200+.	D5	田**	120	(€ 110)
3842	1902/04: 3 d. emerald-green, wmk. Crown over NSW upright, perf 11½, 12, a fine used block of four, cancelled 'Perth / WA' cds's (Oct 3, 1907) in black. A scarce and attractive multiple Gi = £ 400.	D15	田	150	(€ 135)



3843



3844

3843	10 s. dull green, wmk. Crown over NSW upright, perf 11, an unused example, centred slightly to right, of good colour, fresh and fine, large part og. A choice example of a rare stamp. Copy of cert. Nussbaum (1978) Gi = £ 2'000.	D43	*	400	(€ 360)
3844	20 s. dull green, wmk. Crown over NSW upright, perf 11, an unused example of good colour and centering for the issue, fresh and fine, full unmounted og. An exquisite example of a very rare stamp. Cert. Nussbaum (1978) Gi = £ 4'250.	D44	**	1'000	(€ 900)
3845	1906/08: ½ d. green, wmk. Crown over A, perf. compound 11½ or 12 with 11, a superb unused pane of fifty (5 x 10) from top left hand corner of the sheet, fresh colour and very fine, most stamps unmounted og. A very rare large multiple Gi = £ 750.	D45	田*/**	200	(€ 180)





3846



3847



3848



3849

Gibbons

Start price  
in CHF      Start price  
approx. €

- 3846** 1902/04: 1 d. dull green, wmk. Crown over NSW upright, perf 11 all round, a fine used example of good colour, lightly cancelled by barred obliterator in black. An extremely scarce stamp Gi = £ 1'100.

*Provenance: Collection Martin West, Grosvenor, London, 4 Oct 2012, lot 313.*

D51

**250** (€ 225)

- 3847** 1907: The set from ½ d. to 6 d., wmk. Crown over double lined A, perf. 11½ x 11, the fine unused set of five values, all of good colour and centering, the 6 d. with slight surface spot, large part og. Rare Gi = £ 900.

D53/D57

\*

**200** (€ 180)

- 3848** 1909: Stroke after Value, 2/- dull green, wmk. Crown over A, perf. 11, a fine unused example of resonant colour, well centred and superb og. A superb example of a rare stamp Gi = £ 1'000.

*Provenance: SG Auction, London, 28-30 June 1978, lot 227.*

D60

\*

**300** (€ 270)

- 3849** 1908/09: 10/- dull green, stroke after value, perf. 11, an unused example of this scarce stamp, with part marginal watermark, of good appearance, without gum Gi = £ 2'500.

D61

(\*)

**250** (€ 225)

3850



3851



3852

- 3850** 1913/23: 3 d. rosine & apple green (1916 printing), wmk. Crown and double lined A, perf. 14, variety "Watermark Sideways", a fine used example centred to right, lightly cancelled in New South Wales (June 9, 1922) in black. Extremely rare. Cert. Ceremuga (2008) Gi = £ 4'500/BW D100a.

*Provenance: Collection Martin West, Grosvenor, London, 4 Oct 2012, lot 338.*

D82a

**1'200** (€ 1'080)

- 3851** 1931/36: Bicoloured 3 d. carmine & yellow-green, a fine unused block of four from base of sheet, divided by interpanneau margin with full JOHN ASH imprint, unmounted og. Scarce and choice multiple Gi = £ 300+.

D108

田\*\*

**250** (€ 225)

- 3852** 1953/59: 2 s. carmine & deep green, the rare shade in a fine used block of four. Scarce Gi = £ 520+.

D130a

田

**180** (€ 160)

- 3853** 1902/1960: The wonderful primarily unused collection with 1902 set of eight values unused with further blocks of four of the 4 d. and 6 d. values, 1902/04 5 s. - 2 s. values unused, 5 d., 1 s. and 2 s. optd. SPECIMEN in black, seventeen stamps optd. SPECIMEN in black and further optd. ULTRAMAR in blue by Portuguese receiving authority on receipt from the UPU; 1909/10 set of eleven to £ 1. with additional 5 s. in corner block of four and £ 1 cto used; 1913/23 set to £ 1 incl. corner block of six of the 1 s. with monogram; 1922/30 set of eight incl. imprint multiples and the 4 d. in a block of 28 from lower right of sheet; 1931/36 with set of seven incl. additional multiples; 1938 set of seven incl. additional multiples; 1946/57 redrawn set of ten with additional multiples; 1953/59 set of three high values in blocks of four; 1958/60 set in multiples etc. A delightful and extremely valuable lot with viewing a pleasure.

D1-D141 田\*/\*\*

**1'500** (€ 1'350)

## Official Stamps



3854

Gibbons

Start price  
in CHF      Start price  
approx. €

- 3854** 1913: 1 d. red, Die I, Plate C, a fine unused block of twelve (6 x 2) punctured 'O.S.', from lower right corner of the sheet with "JBC" monogram, superb colour, a few minor bends, mounted in margin only, stamps superb unmounted og. Rare and most attractive multiple. Cert. Ceremuga (2018) ACSC 2ba(C)zb.  
Provenance: Collection 'Fordwater', Spink, London, 9 Nov 2011, lot 59.

O2      田\*\*      **200**      (€ 180)



3855



3856

- 3855** 1 d. red, Die II, punctured 'OS', an unused marginal example with "CA" monogram, fresh and fine, superb large part og. Scarce thus. Cert. Ceremuga (2018) ACSC 3ba/za / Gi = £ 48+.
- 3856** 2 d. grey, Die I, Plate 2, an unused horizontal strip of three punctured 'O.S.', marginal from lower left corner of the sheet with "CA" monogram, fresh and fine appearance, some hinge reinforcements as the stamps were added to the margins by the printer; believed to be an Official repair to a faulty sheet, part og. A scarce multiple. Cert. Ceremuga (2018) ACSC 5(2)z/bb = \$ 1'000.  
Provenance: Collection 'Fordwater', Spink, London, 9 Nov 2011, lot 62.

O2d      \*      **100**      (€ 90)

O3      \*      **300**      (€ 270)

*If you cannot participate in our auction in person, please let us have your maximum bids in writing as early as possible. Written bids will be used only if they exceed any personally present bidders in the auction room, or any other written bids.*





3857

Gibbons

Start price  
in CHF      Start price  
approx. €

- 3857** 1914: ½ d. yellow-green, Die I, Plate 2, punctured 'O.S.' (Type 2), a fine unused block of six from lower left corner of the sheet, "CA" monogram, fresh and very attractive with upper left stamp showing 'Break in Shading over 'U' of Australia', large part og. with five stamps unmounted og. Cert. Ceremuga (2018) ACSC 1(2)z/bd = \$ 500+.

*Provenance: Collection Arthur Gray, Feb 2007.*

*Collection 'Fordwater', Spink, London, 9 Nov 2011, lot 73.*

O16    田\*/\*\*      **200**    (€ 180)



3858



3859

- 3858** 2½ d. indigo, Die II, wmk. 1st Crown / A, a fine unused marginal block of four, punctured 'OS', fresh colour and most attractive, large part og. with lower pair unmounted og. Cert. Ceremuga (2018) ACSC 9bb / Gi. = £ 1'500+.

O19    田\*/\*\*      **400**    (€ 360)

- 3859** 2½ d. indigo, Die II, punctured 'O.S.' (Type 2), an unused block of eight (4 x 2) from lower left corner of the sheet, "JBC" monogram, fresh and fine with left two stamps showing 'heavy coastline to WA', large part og. with six stamps unmounted og. Rare and most attractive multiple. Cert. Ceremuga (2018) ACSC 9bb(2)d/z / Gi = £ 3'000.

O19    田\*/\*\*      **1'200**    (€ 1'080)





3860



3862



3861

- 3860** 3 d. olive-green, Die II, a fine unused block of four, punctured 'OS', well centred and very fresh, large part og. A very scarce multiple. Cert. Ceremuga (2018) ACSC 12bs / Gi. = £ 3'000+.
- 3861** 3 d. olive, Die I, punctured 'O.S.' (Type 2), a fine unused block of four, well centred and of good colour, large part og. Scarce multiple. Cert. Ceremuga (2018) Gi = £ 720+.
- 3862** 1915: 6 d. ultramarine, Die II, second watermark, an unused corner block of four, punctured 'O.S.' (Type 2), of excellent colour and showing additional line of horizontal perforations at top, fresh and fine, minor splitting, one tiny tone spot otherwise full unmounted og. Rare. Cert. Ceremuga (2018) Gi = £ 1'700/ACSC 18b/ba.  
*Provenance: Collection William & Hugh Morgan, Spink, London, 13 Nov 2012, lot 156.*
- 3863** No Lot

Gibbons		Start price in CHF	Start price approx. €
O20e	田*	750	(€ 675)
O20+ O20e	田*	200	(€ 180)
O33	田**	500	(€ 450)



3864



3865

- 3864** 1914/20: 1 d. rose-carmine in a 'dry' shade, Die I, wmk. 2nd Crown / A, comb perf. 14¼ x 14, a fine unused block of four on smooth paper, punctured 'OS', lower right stamp with 'damaged lower right frame' variety, fresh and very fine, large part og. A scarce and attractive multiple. Cert. Ceremuga (2018) ACSC 71Lbb(3)g.
- 3865** 1 d. rose-carmine in a 'dry' shade, Die I, wmk. 2nd Crown / A, comb perf. 14¼ x 14, a fine unused block of four on smooth paper, punctured 'OS', fresh and very fine, large part og. A scarce and attractive multiple. Cert. Ceremuga (2018) ACSC 71Lbb/ca.

O39 var	田*	120	(€ 110)
O39 var	田*	100	(€ 90)



3866



3867

Gibbons

Start price  
in CHF      Start price  
approx. €

- 3866** 1915/28: 2 d. grey, Die I, third watermark, an unused example, punctured 'O.S.' (Type 2), marginal from base of sheet with "CA" monogram, superb large part og. Scarce and most attractive. Cert. Ceremuga (2018) ACSC 7(1)zb/ba.

*Provenance: Collection Lord Cornwallis, Grosvenor, London, 17 March 2011, lot 328.*

O43

\*

**150** (€ 135)

- 3867** 3 d. olive, Die I, third watermark, an unused horizontal pair, punctured 'O.S.' (Type 2), marginal from base of sheet with "CA" monogram, superb unmounted og. Scarce and most attractive. Cert. Ceremuga (2018) ACSC 13b(2)za.

*Provenance: Collection Lord Cornwallis, Grosvenor, London, 17 March 2011, lot 330.*

O45

\*\*

**150** (€ 135)

3868



3870

- 3868** 3 d. olive-green, Die I, wmk. 1st Crown / A inverted, a fine unused block of four, punctured 'OS', well centred and of good colour, corner crease on one stamo not affecting appearance, large part og. A very scarce multiple. Cert. Ceremuga (2018) ACSC 13a/b / Gi. = £ 560+.

O45cw    田\*/\*\*

**180** (€ 160)

- 3869** No Lot

- 3870** 1916/28: 9 d. violet, Die II, wmk. Crown / A, perf. 12, a fine unused block of four punctured 'OS', of excellent centering and colour, fresh and fine but for two diagonal gum creases unapparent on face; large part or, lower pair, unmounted og. Cert. Ceremuga (2018) ACSC 26ba/Gi = £ 380+.

O47    田\*/\*\*

**120** (€ 110)

3871

- 3871** 1915/28: 2 s. red-brown (Aniline), Die II, third watermark, an unused example, punctured 'O.S.' (Type 2), centred to left but of excellent colour and unmounted og. An extremely elusive stamp. Cert. Ceremuga (2018) Gi. = £ 2'250/ACSC 37Gba = \$ 3'000.

*Provenance: Collection 'Fordwater', Spink, London, 9 Nov 2011, lot 150.*

O49b

\*\*

**500** (€ 450)



3872

Gibbons      **Start price**      *Start price*  
                         **in CHF**      *approx. €*

**3872**      5 s. grey & yellow, third watermark, a fine used block of eight (2 x 4) from top right corner of the sheet, punctured 'O.S.' (Type 2), cancelled by Melbourne datestamps in black. Note first stamp at top of block with "Forked Tail to Kangaroo" variety. A scarce and most appealing multiple Gi = £ 550+.

O50      田      **200**      (€ 180)



3873



*Parliament House, Melbourne*

**3873**      10 s. grey & pink, third watermark, an unused block of four, marginal from base of sheet, punctured 'O.S.' (Type 2), with "JBC" monogram, fresh colour and appearance, superb large part og. with lower pair unmounted og. A most attractive multiple: just this block of four and a block of six are recorded on the OS 10 s. value with monogram. Cert. Ceremuga (2018) Gi = £ 4'800/ACSC 48ba/zb = \$ 60'000+.

O51      田\*/\*\*      **5'000**      (€ 4'500)





3874



3875



3877



3878



3880

- 3874** 1914/21: 1 d. carmine-red, second watermark, rough paper, comb perf. 14¼ x 14, punctured 'O.S.' (Type 2), a fine unused horizontal pair showing Die I and Die II adjacent, in a deep shade, large part og. Rare. Cert. Ceremuga (2018) ACSC 72P(1)ic/Gi = £ 1'100.  
*Provenance: Collection Martin West, Grosvenor, London, 4 Oct 2012, lot 292.*

- 3875** 1916/20: 1 d. rosine, Die II, 2nd. watermark, rough paper, comb perf. 14¼ x 14, punctured 'OS', a fine unused example centred to right, superb large part og. A scarce stamp. Cert. Ceremuga (201) ACSC 72Ibb(1)ic/Gi = £ 750.

Gibbons

Start price  
in CHFStart price  
approx. €

O54b+ e

\*

**300**

(€ 270)

O54f

\*

**200**

(€ 180)



3876

- 3876** 1 d. rosine on rough paper, second watermark, Die and Die II, Plate 1, comb perf. 14¼ x 14, perforated 'O.S.', an unused block of twelve from lower right corner of sheet, with second and third vertical rows being Die II (Gi = £ 750 each), showing "JBC" monogram below position 58, fresh and very fine, perforations reinforced, large part og. Cert Ceremuga (2018). Gi = £ 1'500+/BW 72I(1)ic/zb.

- 3877** 1918/20: 1 d. deep red (Aniline), **Multiple Crown over A Watermark** punctured 'O.S.', a superb unused example of fresh colour and superb og. A very rare stamp. Cert SPRS (2004) Gi = unlisted/BW 74Eb = \$ 400.

*Provenance: Collection 'Fordwater', Spink, London 9 Nov 2011, lot 247.*

- 3878** 1918/23: 2 d. bright rose-scarlet, second watermark, perf. 14, punctured 'O.S.' (Type 2), a superb unused example, variety "Watermark Inverted", fresh and fine, unmounted og. Rare. Cert. Ceremuga (2018) ACSC 96Ca/b / Gi = £ 1'300.

- 3879** No Lot

- 3880** 1924: 1½ d. scarlet-red, Die I, 2nd. wmk. Crown / A inverted, a fine unused example punctured 'OS', variety: "Printed on the Gummed Side", fresh and very fine, both sides of stamp unmounted og. Rare. Cert. Ceremuga (2018) ACSC 89c/Gi = £ 375.

O54c/f

田\*

**1'500**

(€ 1'350)

O63 var

\*

**200**

(€ 180)

O72w

\*\*

**400**

(€ 360)

O80wa

\*\*

**150**

(€ 135)



3881

- 3881** 4½ d. violet, Die I, wmk. Crown / A, perf. 14, punctured 'OS', a fine interpanneau marginal pair with full T.S.HARRISON imprint at base, fresh and very fine, large part og. An attractive and scarce multiple. Cert. Ceremuga (2018) ACSC 118b/z / Gi = 525+.

Gibbons

Start price  
in CHF

Start price  
approx. €

O84

\*

**200**

(€ 180)



3882

- 3882** 1926/30: 2 d. red-brown, Die I, wmk. Crown / A, comb perf. 14¼ x 14, punctured 'OS', a fine unused example centred to right, fresh and fine, unmounted og. Cert. Ceremuga (2019) ACSC 98ba/Gi = £ 250.

O92

\*\*

**100**

(€ 90)



3883

- 3883** 1 d. green, wmk. multiple Crown, perf. 13½ x 12½, a fine unused strip of three, interpanneau marginal at left, Die I-II-II se-tenant, punctured 'OS', fresh and very fine, unmounted og. A rare and most attractive multiple. Cert. Ceremuga (2018) ACSC 81(1)ic/Gi = 320+.

098+ 098b

\*\*

**150**

(€ 135)

*We accept consignments of suitable rarities and collections or entire estates for our forthcoming auctions at any time.  
Please do not hesitate to contact our Philatelic Experts to discuss further details for consignments. Absolute discretion is guaranteed.*





3884

**3884** 1929/30: 6 d. chestnut, Die IIB, wmk. Multiple Crown and A, punctured 'O.S.' (Type 2), an unused block of eight divided by interpaneau margin with full JOHN ASH imprint, fresh and fine, some black paper adherence on gum of one stamp, others superb large part og. or unmounted og. Cert. Ceremuga (2017) ACSC 22b(4)z / Gi = £ 320+.

Gibbons		Start price in CHF	Start price approx. €
O114	田*/**	200	(€ 180)



3885

**3885** Centenary of Western Australia 1½ d. dull scarlet, punctured 'O.S.', an unused block of eight from base of sheet with full JOHN ASH imprint, fresh and fine with seven stamps unmounted og. Gi = £ 200+.

**3886** 1931/33: Overprinted 'OS' in black, the unused collection on leaves with Kingsford Smith 2 d. and 3 d., Kangaroo 6 d. chesnut in a block of four, Sydney Harbour Bridge 2 d. and 3 d. in imprint blocks of four, 1 s. Lyre Bird in corner block of four etc. A fine and attractive lot (27 items) Gi = £ 1'750+.

O120	田*/**	120	(€ 110)
O123/O136	田*/**	250	(€ 225)





3887

Gibbons

Start price  
in CHF      Start price  
approx. €

**3887** 1932: Superb Lyrebird 1 s. green, an extraordinary unused block of sixty (6 x 10) with sheet margins on three sides, fresh and very fine, large part or unmounted og. A magnificent and extremely rare multiple Gi = £ 3'000+.

O136 田\*/\*\*

**800** (€ 720)

**3888** 1914/30: Punctured 'OS' unused collection on leaves with 1914/21 4 d. (2), 1915/28 3 d. pair Die IIB, 6 d. ultramarine Die II, 1 s. Die IIB, 1916/20 with 1 d. values, 1918/20 with 1½ d., (4 different), 1918/23 with values to 2 s., 1926/30 perf. 12½ 1 d. sage, 4½ d. violet, 1926/30 perf. 13½ x 12½ range incl. 1 d., 2 d., 3 d. Die II in a block of four incl. position 33 and 38 varieties, 4 d. and 5 d. Die II; 1929/30 9 d. violet, 1 s. blue-green; two with certs. Ceremuga (2018).

O41-O116 田\*

**250** (€ 225)

British Commonwealth Occupation Force / Japan



3889



3890

- 3889

1946 (Oct 12)-1947: The complete unused set of seven values, with additional stamps (5) incl. ½ d. with "Wrong font to 6" variety, 1 d. in an unused block of four with blue-black opt. (cert. BPA, 1957), 3 d. with double surcharge variety unused with RPSV cert. (Gi J3a = £ 1'200), 1 s. grey-green with "Wrong font to 6" variety and both types of the 5 s. claret; largely fresh and fine, large part og. Gi = £ 2'200+.
- 3890

6 d. purple-brown, a fine unused block of four from base of sheet, second stamp showing "Wrong font to 6" variety, left pane, row 9, stamp 4, and lower left stamp showing 'Wrong font to 1" variety, superb og. with lower pair unmounted og. A scarce positional multiple. Cert. Ceremuga (2018) ACSC J4+J4h+J4i / Gi = £ 375+.

Gibbons		Start price in CHF	Start price approx. €
J1/J7a	田*/**	250	(€ 225)
J4+ J4a	田*/**	150	(€ 135)



3891



Australian Forces of the BCOF  
(British Commonwealth Occupation Forces)  
in 1946 in Kure, Japan on Parade

- 3891

5 s. claret on thin rough paper, a fine unused block of four from lower left of sheet with full imprint, couple of minor wrinkles, superb og. with three stamps unmounted og. Cert. Ceremuga (2018). Scarce ACSC J8za / Gi = £ 440+.

J7a	田*/**	150	(€ 135)
-----	-------	-----	---------



# NEW GUINEA

**The largest Island of the Southern Hemisphere and Oceania**

- 1828** Netherlands formally claimed the western half of the island as Netherlands New Guinea 1
- 1883** The British colony of Queensland annexed south-eastern New Guinea in the name of the British Government 2
- 1884** Germany claimed north-eastern New Guinea as German New Guinea (or Kaiser-Wilhelms-Land) 3
- 1884** The south-eastern territory became a British protectorate
- 1888** Annexed by Britain as a British Colony named British New Guinea
- 1902/06** British government transferred responsibility over south-east New Guinea to Australia re-naming the area "Territory of Papua"
- 1914** Australian Forces seized German New Guinea
- 1920** Seized German New Guinea became the Territory of New Guinea to be administered by Australia under a League of Nations mandate
- until 1942** The territories under Australian administration became collectively known as The Territories of Papua and New Guinea



*Reading the proclamation of annexation, Port Moresby, New Guinea*





## 1914, G.R.I. and Value 6 mm apart



3892



3894



3893

Gibbons

Start price  
in CHF      Start price  
approx. €

**3892** 1 d. on 3 pf. brown, Setting 12, position 5A, a fine unused example of good colour from this rare Setting, with variety "1" with straight serif: "I" for "1" in "1 d.", fresh and very fine with large part og. A rarity of which Gibbs recorded just 5 unused examples. Cert. Holcombe (1998) Gi = £ 3'500.

1d      \*      **750**      (€ 675)

**3893** 1 d. on 3 pf. brown, Setting 12, position D, a fine unused example of good colour from this rare Setting, with variety "1" with straight serif: "I" for "1" in "1 d.", tiny hinge thin at top not detracting from appearance, fresh and very fine with large part og. A rarity of which Gibbs recorded just 5 unused examples. Signed Kilian. Cert. Holcombe (1990) which has been further annotated in pencil by Hoffman Giesecke Gi = £ 3'500.

1d      \*      **500**      (€ 450)

**3894** 1 d. on 5 pf. green, Setting 1, positions 1-2/1-2, a splendid unused block of four, the two left hand stamps in the block showing the "Short 1" variety, fresh and very fine, large part og. with the lower pair unmounted og. Rare and most appealing multiple Gi = £ 870+.  
*Provenance: Collection Tim Rybak, Belgrave, Melbourne, 26 April 2008, lot 79.*

2+ 2b      田\*/\*\*      **350**      (€ 315)



3895

**3895** 1 d. on 5 pf. green, a fine used example on 1914 cover addressed to Colonel E. F. Wallack in Sydney, tied by RABAUL / NOV 14 1914 datestamp in violet (Gibbs type 3). The reverse of the cover with typed "I hereby certify that the stamp attached to this envelope is one of the original sixteen sets surcharged by the Military Government on the Occupation of German New Guinea (signed) Walter Fry, Captain, Treasurer". Fresh and fine, a scarce and attractive cover.

*Provenance: Corinphila sale 143, May 2005, lot 4750.*

2      ✉      **500**      (€ 450)



3896

Gibbons

Start price	Start price
in CHF	approx. €

- 3896** 1 d. on 5 pf. green, Setting 1, positions 5/5 repeated, a used vertical pair on registered cover addressed to Carl Weller (the German Postal Secretary in Rabaul prior to the surrender) with the 1 d. pair cancelled by RABAU / \*Oct 17 1914\* datestamp in violet (Gibbs type 2) of First Day of Issue; with, added at a later date at left, Rabaul 3 d. Registration label (Gibbs 33, Setting A, position 1) cancelled by "Rabaul" handstamp in violet (Gibbs type 5). See Gibbs page 95 for a similar philatelic cover.

*Provenance: Corinphila sale 143, May 2005, lot 4751.*

2+ 33

**200**

(€ 180)



3897

- 3897** 2 d. on 10 pf. carmine, Setting 1, positions 3-10, a fine unused horizontal strip of eight, marginal from top of sheet, with position 10 showing variety "1" for "I" in GRI, creased through perfs. in two columns and some separation but superb og. or unmounted og. A very fine reference strip and an extremely scarce multiple. Signed Kosack Gi = £ 1'000+.

*Provenance: Collection Robert M. Gibbs, Corinphila sale 78, 27 Sept 1988, lot 1754.  
Corinphila sale 137, May 2003, lot 2376.*

3+ 3a

\*/\*\*

**350**

(€ 315)



3898



German New Guinea Post Office

Gibbons

Start price  
in CHF      Start price  
approx. €

- 3898** 2½ d. on 10 pf. carmine, Setting 1, positions 8-9/8-9, a fine unused block of four, marginal from top of sheet, superb og. with left hand vertical pair unmounted og. A fine and scarce multiple Gi = £ 380+.

5 田\*/\*\*

**150** (€ 135)

3899



3900



3901

- 3899** 2½ d. on 10 pf. carmine, Setting 9, position 3, a fine used example, cancelled by late usage of 'Rabaul' cds (Gibbs type 10) in black, showing the major variety "Missing Fraction Bar in ½" which only exists on this setting. Holcombe recorded less than 10 examples of the 10 pf. Illustrated in Gibbs GRI handbook on page 66 - he records just 2 used examples known. An extremely rare and fine stamp. Cert. Holcombe (1998) Gibbs 5a/Gi = £ 3'500.  
*Provenance: Collection Robert M. Gibbs, Corinthila sale 78, Sept 1988, lot 1758.*

5a

**500** (€ 450)

- 3900** 2½ d. on 20 pf. ultramarine, Setting 12, position 1C, a fine unused example of good colour with the characteristic "I" in GRI similar to the lower case "l" found in position 10 of the Setting 1 and "Small stop after "I" in GRI", fresh and fine, large part og. Very few recorded examples exist, this stamp illustrated in Gibbs on page 40 and discussed on page 41 of the handbook. Signed Champion. Cert. Holcombe (1990) Gi = £ 110+.

6 var

\*

**200** (€ 180)

- 3901** 3 d. on 25 pf. black & red on yellow, Setting I, position 8, a fine used example cancelled on First Day of Issue by 'RABAUL / Oct 17 1914' datestamp in violet. Scarce, this describer believes the stamp to be position 8, Holcombe attributes it to position 6 or 7; nevertheless an unusual usage in superb quality. Signed Holcombe Gi = £ 450.

7

**200** (€ 180)

3902



3903

- 3902** 3 d. on 30 pf. black & orange on buff, Setting I, positions 2-3, a fine unused horizontal pair with position 2 showing "Large Stop after "I" in "GRI" and position 3 showing Beard of "G" in "GRI" broken, fresh colour and superb og. A fine positional pair Gi = £ 950+.

8

\*

**200** (€ 180)

- 3903** 3 d. on 30 pf. black & orange on buff, Setting 12, position D, a fine unused example of good colour from this rare Setting, with variety "Break at top of "G" in GRI, "R" with broken cross-bar at top", fresh and very fine with large part og. See Gibbs page 40, a rarity, especially so on this value. Signed Holcombe. Opinion Holcombe (1990) Gi = £ 475+.

8 var

\*

**300** (€ 270)





3904



3905



3906

		Gibbons		Start price in CHF	Start price approx. €
3904	4 d. on 40 pf. black & carmine, Setting 6, position 2, a fine unused example, with characteristic "R with weak base to leg and top half of "I" in GRI leaning to left", fresh and fine with large part og. A scarce Setting of five positions. Signed Holcombe $G_i = £ 475$ .	9	*	200	(€ 180)
3905	4 d. on 40 pf. black & carmine, Setting 1, position 6, a fine unused example, showing variety "Surcharge Double", both are strong impressions, fresh and very fine, merest hint of a natural gum bend, large part og. A very rare stamp with just 20 examples possible. Cert. Ceremuga (2018) $G_i = £ 4'000$ . <i>Provenance: Collection Tim Rybak, Belgrave, Melbourne, 26 April 2008, lot 87.</i>	9e	*	1'200	(€ 1'080)
3906	5 d. on 50 pf. black & purple on buff, Setting 12, position C, a fine unused example of good colour from this rare Setting, with variety "R in GRI with broken serif at lower right and distended "I" almost doubled at base", fresh and very fine with large part og. See Gibbs page 40, a rarity, especially so on this value. Cert. Holcombe (1997) $G_i = £ 850+$ .	10 var	*	500	(€ 450)



3907



3908

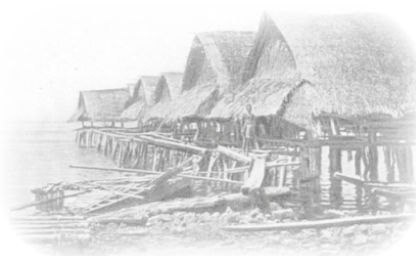
3907	8 d. on 80 pf. black & carmine-rose, 6 mm. spacing, Setting 8A, a fine unused example with good colour, well centred and small part og. A very rare Setting. Signed Holcombe, Opinion Holcombe (1995) $G_i = £ 1'000$ .	11	*	250	(€ 225)
3908	8 d. on 80 pf. black & carmine on rose, Setting 12, position B (diagonally sliced "I" in "GRI" in it's final worn State), fresh and fine unused example with superb og. A rare stamp. Signed Holcombe, Richter. Opinion Holcombe (1991) $G_i = £ 1'000+$ . <i>Note: Stamps from Setting 12 are very rare, Gibbs apportions a value of 25 times normal to this Setting.</i>	11	*	200	(€ 180)



3909

3909	8 d. on 80 pf. black & carmine on rose, 6.5 mm. spacing, rare setting 9B, a fine used (cancelled to order) example tied to small piece by BUKA / DEUTSCH NEUGUINEA datestamp (Gibbs type 13, "few known") well struck in black (16.11.14). Rare and very fine usage. Signed Jakubek. Cert. Ceremuga (2018) $G_i = £ 1'500+$ . <i>Provenance: Corinphila sale 143, May 2005, lot 4760.</i>	11	△	750	(€ 675)
------	--	----	---	-----	---------

## 1914, G.R.I. and Value 3 ½ mm - 4 mm apart



Native houses in New Guinea



3910

Gibbons

Start price  
in CHF

Start price  
approx. €

- 3910** 1 s. on 1 m. carmine, Setting 4 position types 1-2/1-2, a fine unused corner block of four from top left of the sheet of 20 subjects (sheet positions 1-2/5-6), with full margins but somewhat tropicalised and a couple of ironed bends, some reinforcement and second stamp with tiny thin not apparent on front, but with lower two stamps unmounted og. A remarkable and extremely rare multiple: only 128 of the 1 mark value (Gi 12 and Gi 27) were surcharged, consequently all multiples are very seldom encountered. Signed Holcombe. Cert. Holcombe (1991) Gi = £ 14'000.

Provenance: Harmers, London, 29 Jan 1997, lot 913.

12 田\*/\*\*

**4'000** (€ 3'600)



3911



3912

- 3911** 2 s. on 2 m. blue, Setting 3, position type 2, a fine unused example with "Stop replaced by a large round stop at the close of the print-run", a fine unused example of excellent centering and colour, minimal aging, fresh and fine, large part og. An extremely rare stamp, stamps from Setting 3 being rarities. Signed Champion, A. Diena. Cert. Holcombe (1990) Gi = £ 3'250.

Provenance: Corinphila sale 83, Sept 1991, lot 7984.

13

\*

**1'000** (€ 900)

- 3912** 2 s. on 2 m. blue, Setting 1, position type 4, a fine unused example with "Large S after 2", a fine unused example of excellent centering and colour, one blunt perf. at base, fresh and fine, large part og. An extremely rare stamp. Signed Champion, A. Diena. Cert. Holcombe (1998) Gi = £ 3'250.

13a

\*

**1'000** (€ 900)



German Imperial Post Office in Rabaul



3913

Gibbons

Start price  
in CHF      Start price  
approx. €

- 3913** 2 s. on 2 m. blue, Setting 1, position type 3, a fine used example on 1915 cover addressed to the Assistant Postmaster in Rabaul, neatly tied by RABAU / NEW BRITAIN datestamp (Jan 20, 1915) in violet (Gibbs type 13). The cover with file fold well away from the superb adhesive. Philatelic but a delightful and extremely rare cover. Signed Hoffman Giesecke. Cert. Gibbs (2002) Gi = £ 4'000 off cover.

Provenance: Corinphila sale 133. June 2002, lot 547.

13

**2'000** (€ 1'800)

3914



3915

- 3914** 3 s. on 3 m. violet-black, Setting 3, position 4 with 4 mm. spacing, a fine unused example of excellent centering and colour, fresh and fine appearance, large part og. Just 87 of the 3 mark value were surcharged (Gi 14 and 29). A rare stamp. Signed Holcombe. Cert. Ceremuga (2018) Gi = £ 5'500.

Provenance: Corinphila sale 83, Sept 1991, lot 7988.

14

\*

**1'200** (€ 1'080)

- 3915** 3 s. on 3 m. violet-black, Setting 7, position type unknown, an unused example of good colour and centering, 'clean cut' overprint corresponding to this late setting, fresh and fine but for small gum skip on top perforation, with large part og. A rare stamp with just 87 examples of the 3 mark overprinted, stamps from this Setting are extraordinarily unusual. Cert. Holcombe (1995) Gi = £ 5'500.

Provenance: Corinphila sale 91, March 1996, lot 8458.

Harmers, London, 24 July 1997, lot 207.

14

\*

**1'500** (€ 1'350)





German Headquarters after capture by the Australian Navy and Military Expeditionary Force



3916

Gibbons

Start price in CHF    Start price approx. €

**3916** 5 s. on 5 m. carmine & black, Setting 3, position type 3, a fine used example, marginal from base of sheet, paper slightly aged, cancelled by 'Stephansort' datestamp in blue (Gibbs type 6). Only 102 of the 5 mark values (Gi 15 and 30) were overprinted. A most attractive example of an exceedingly rare stamp, especially so in used condition. Cert. Holcombe Gi = £ 16'000.  
*Provenance: Corinthila sale 84, Oct 1992, lot 6324.*  
*Harmers, London, 10 March 1998, lot 1392.*

15

**5'000** (€ 4'500)

**1914, G.R.I. and Value 5 mm apart**



3917

**3917** 1 d. on 3 pf. brown, Setting 11, position 1-5, a fine unused horizontal strip of five showing all the types from this Setting, with position 1 showing "I" for "1" variety and position 5 with "1" showing straight serif at top, fresh and very fine with superb unmounted og. A rare multiple from the final State of the Setting with stops very weak and breaking up, especially on positions 1 and 2. This strip illustrated and discussed in the Gibbs handbook on page 38. Signed Holcombe Gi = £ 1'130+.

16+ 16a

\*\*

**400** (€ 360)



3918



3919

Gibbons

Start price  
in CHF      Start price  
approx. €

- 3918** 1 d. on 3 pf. brown, Setting 11, position 5, an unused example with variety "Straight serif to the top of 1" and "Double Surcharge" variety, the second inverted surcharge being Setting 10, position 1. Fresh and very fine, of excellent colour and superb og. A wonderful example of this (much under-catalogued) stamp, which is unique (Gibbs 16fc) and in superb condition. No example in the collection of Her Majesty Queen Elizabeth II. A great rarity of British Commonwealth philately. Cert. Holcombe (1990) Gi = £ 8'000.  
*Provenance: Bonhams, London, 12-13 Feb 2003, lot 1057.*

16f \* **1'500** (€ 1'350)

- 3919** 1 d. on 3 pf. brown, Setting 10, position 2, a fine unused example of good colour and centering, variety "**Surcharge Inverted**", fresh and fine with large part og. Gibbs records, on page 72 of the handbook, a maximum of just 10 examples in existence. An extremely rare stamp in excellent condition. Cert. BPA (1991) Gi = £ 6'000.  
*Provenance: Corinphila sale 84, Oct 1992, lot 6330.*

16g \* **2'000** (€ 1'800)

3920

- 3920** 1 d. on 5 pf. green, Setting 5, positions 1-5, a used horizontal strip of five, corner marginal from lower left of sheet and showing the first five positions of this Setting, cancelled by scarce KIETA datestamps in black. The multiple with some creasing of no great significance as multiples of this Setting are extremely scarce, this strip being illustrated in the Gibbs handbook on page 31. Rare and appealing.

17 **250** (€ 225)

John Crichton-Stuart,  
4th Marquess of Bute  
1881-1947



3921

- 3921** 1 d. on 5 pf. green, a used example with variety "**No Stops between the letters GRI**", tied to small piece by part 'Stephansort' cds in blue leaving the variety clear. Small surface blemish at lower right but an extremely rare variety - see Gibbs 17e on page 76 of the handbook where he records just the one unused example in the collection of Her Majesty Queen Elizabeth II and two used examples, however, it is now believed that four are known. A rarity. Cert. BPA (2017) Gi = £ 11'000.  
*Provenance: Collection Marquess of Bute, RL, April 1959.*

17ga △ **2'500** (€ 2'250)



3922

Gibbons

Start price  
in CHF      Start price  
approx. €

- 3922** 1 d. on 5 pf. green, Setting 2, position 1, a fine used example with variety **"Surcharge Double"** with the second surcharge shifted somewhat to right, tied to small piece by complete strike of oval RABAUL / NEW BRITAIN datestamp (Jan 6 1915) in violet (Gibbs type 8). A rare stamp, especially so in used condition, not recorded by Gibbs in used condition (see page 73). Rare and most unusual piece. Cert. BPA (2003) Gi = 5'000 for unused.

17i

△

**1'500** (€ 1'350)

3923

- 3923** 2 d. on 10 pf. carmine, the famous unused example with **error of surcharge ".G.R.I. / 1d."**, surcharged with wrong value and with stop before "G" and no stop after the "G", well centred, of good colour, without gum. Just 2 unused examples recorded (Gibbs 18e, see page 77), this being the Bute example. A major rarity of British Commonwealth philately. Cert. Gibbs (2002) Gi = £ 12'000.

*Provenance: Collection Marquess of Bute, RL, London, 29 April 1959, lot 97.*

18k

(\*)

**4'000** (€ 3'600)

3924



Robert Martin Gibbs

- 3924** 2 d. on 20 pf. ultramarine, Setting 11, position 4/4, the unused vertical pair, showing variety **"Surcharge Double in pair with normal"**, fresh and very fine, superb large part og. with lower stamp unmounted og. Exceptionally rare variety (Gibbs records, on page 78, that possibly 20 examples can exist) however, in pair with a normal stamp the variety is of quite exceptional rarity. Signed David Field. Cert. BPA (1983) Gi = £ 3'500+.

*Provenance: Collection Robert M. Gibbs, Corinthila sale 78, 27 Sept 1988, lot 1845.*

19+ 19h

\*

**1'500** (€ 1'350)





3925



Vessels in the Harbour off Rabaul

		Gibbons	Start price in CHF	Start price approx. €
3925	2 d. on 20 pf. ultramarine, Setting 2, positions 5-6, a horizontal pair used on small piece, creased between the stamps, showing variety "Surcharge Double, One Inverted", the inverted surcharge being Setting 2, positions 9-10, the pair neatly tied by oval RABAU / NEW BRITAIN datestamp (Jan 6 1915) in violet (Gibbs type 8). Gibbs (19e, page 79) states a possibility of 15 examples but with a question mark and records no used specimens. An exceptional and extremely rare pair in superb quality. Signed Bartels. Cert. Holcombe (1991) Gi = £ 12'000. Provenance: Corinphila sale 143, May 2005, lot 4770.	19i    △	4'000	(€ 3'600)



3926



3927



3928

3926	2 1/2 d. on 10 pf. carmine, Setting 5, position 5, a used example showing variety "1 for 'I' in G.R.I.", neatly cancelled by large part RABAU / NEW BRITAIN oval datestamp in violet (Gibbs type 8). Scarce and fine stamp. Signed Herbert Bloch Gi = £ 350+.	20	150	(€ 135)
3927	3 d. on 25 pf. black & red on yellow, 3 d. on 30 pf. black & orange on buff, 4 d. on 40 pf. black & carmine; all in unused blocks of four, fresh and fine, large part og. Scarce multiples Gi = £ 2'150+. Provenance: Corinphila sale 118, October 1999, lot 7154.	22+ 23+ 24	350	(€ 315)
3928	3 d. on 25 pf. black & red on yellow, Setting 2, position 1, an unused example showing variety "Thick '3' in 3 d.", fresh and very fine, large part og. Just 20 examples can exist. A very scarce, somewhat under-catalogued stamp in superb quality. Signed Holcombe Gi = £ 600. Provenance: Collection Robert M. Gibbs, Corinphila sale 78, 27 Sept 1988, lot 1856.	22e    *	250	(€ 225)



Robert Martin Gibbs



3929

John Crichton-Stuart,  
4th Marquess of Bute  
1881-1947

Gibbons

Start price  
in CHF      Start price  
approx. €

- 3929** 3 d. on 30 pf. black & orange on buff, Setting 11, positions 4-5, the remarkable unused strip of three from lower right corner of the sheet with 'New-Guinea' imprint in margin, the first stamp from pos. 4, the second from pos. 5 and the third stamp with **"Missing Surcharge"** error, heavily reinforced on reverse but with part og., this of no great significance as this is the strip illustrated in the Gibbs handbook on page 84 and is unique. A spectacular rarity. Signed Hoffman Giesecke. Cert. BPA (2017) Gi = £ 13'000.

*Provenance:* Collection Marquess of Bute, RL, London, 29 April 1959, lot 130

Collection Lt. Col. J. R. Danson MC., RL, London, 7 Oct 1959, lot 254;

Collection Robert M. Gibbs, Corinphila sale 78, 27 Sept 1988, lot 1861;

Collection Tim Rybak, Prestige, Belgrave, April 2008, lot 107.

22h \* **1'200** (€ 1'080)



3930

- 3930** 3 d. on 30 pf. black & orange-buff, Setting 2, positions 9-10, an unused single example marginal from right of sheet, showing position 9 on the stamp and position 10 overprint on the margin at right; fresh and fine, large part og. Superb appearance and most unusual.

23 \* **250** (€ 225)



3931

- 3931** 3 d. on 30 pf. black & orange on buff, Setting 2, position 5, an unused example of good colour and centering showing variety **"No Stop After 3d."**, one blunted perf. at right otherwise fresh and very fine, large part og. A rare stamp. Cert. Gibbs (2004) Gi = £ 800.

23e \* **250** (€ 225)



3932

Gibbons

Start price  
in CHF      Start price  
approx. €

- 3932** 3 d. on 30 pf. black & orange on buff, Setting 11, position 1, an unused example showing variety "**Surcharge Inverted**", of good colour and centering, fresh and very fine, natural gum bend of no importance, superb large part og. Gibbs records (page 82) just four unused examples with no used known to exist. An exceedingly rare stamp. Cert. BPA (1991) Gi = £ 10'000.

23j

\*

**3'000** (€ 2'700)



3934

- 3933** 4 d. on 40 pf. black & carmine, Setting 11, position 4, an unused example with **error of surcharge "1 d." instead of "4 d."**, well centred example of this rare variety, fresh and fine, large part og. Gibbs records, on page 86 that 10 unused examples are believed to exist. Rare and very fine stamp. Signed David Field. Cert. BPA (1985) Gi = £ 9'000.

24i

\*

**2'500** (€ 2'250)



3933

- 3934** 4 d. on 40 pf. black & carmine, Setting 10, position 5, an unused example with **error of value "1 d." instead of "4 d."** and "**Surcharge Inverted**", a fine appearing example of good colour, with large part og. Slight thin at top of no great significance as this is the sole example of this error recorded (Gibbs #24gd, see page 87 in the handbook). A great rarity for the connoisseur. Unique. Cert. BPA (1991) Gi = £ 19'000.

24ia

\*

**5'000** (€ 4'500)





3936



3935



3937

- 3935** 5 d. on 50 pf. black & purple on buff, Setting 2, position 7, a used example of excellent colour and centering, variety "**Thin 5 in 5 d.**", the "5" being from a different font with straight top, tied to piece by oval RABAUL / NEW BRITAIN datestamp (9 Jan 1915) in violet (Gibbs type 8), leaving the variety clear. Holcombe in his certificate records five examples, Gibbs states, on page 89 of the handbook, that just three examples are recorded in used condition and thus the stamp could be deemed a tad under-catalogued. Extremely rare and most attractive. Signed David Field. Cert. Holcombe (1989) Gi = £ 2'500.  
*Provenance: Collection Marquess of Bute, RL, London, 29 April 1959, lot 138.*  
*Corinthila sale 80, March 1990, lot 6712.*

- 3936** 5 d. on 50 pf. black & purple on buff, Setting 11, position 4, an unused example, variety "**Surcharge Double**", of good colour and centering, fresh and very fine, large part og. A very scarce stamp, Gibbs records, on page 88, a possible 20 unused examples from three different settings. Signed Herbert Bloch. Cert. BPA (1976) Gi = £ 4'500.

- 3937** 8 d. on 80 pf. black & carmine on rose, 5mm. spacing, a fine unused example of fresh colour, overprint with apparent 'small triangle' at base of 'd' of '8 d.'. Fresh and fine, superb og. An unusual stamp. Gibbs 26 var. Gi = £ 425.

Gibbons

Start price  
in CHF      Start price  
approx. €

25e      △      **1'000**      (€ 900)

25f      \*      **1'200**      (€ 1'080)

26      \*      **150**      (€ 135)



3938



3939



John Crichton-Stuart,  
4th Marquess of Bute  
1881-1947

- 3938** 8 d. on 80 pf. black & carmine on rose, Setting 6, position 3, an unused example, variety "**Surcharge Double**", of good colour and centred slightly to top, fresh and very fine, large part og. A very scarce stamp, Gibbs records, on page 89, a possible 15 unused examples from two different settings. Signed Bothe. Cert. BPA (1987) Gi = £ 7'000.

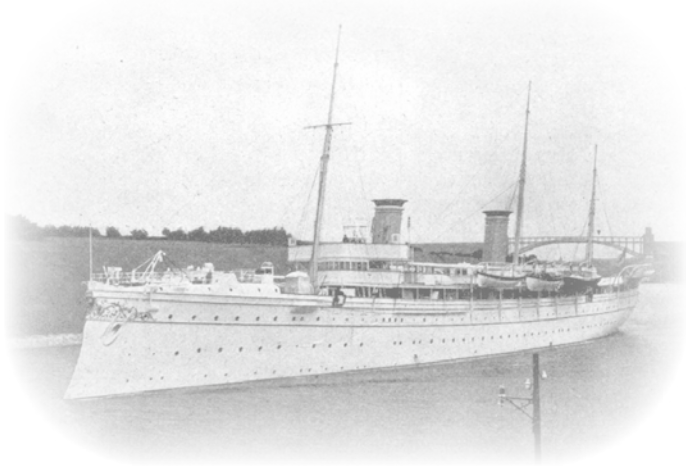
- 3939** 8 d. on 80 pf. black & carmine on rose, Setting 10, position 2, an unused example, marginal from top of sheet, variety "**Surcharge Triple**", of good colour and reasonable centering, all three surcharges being the same setting and position, fresh and fine, superb og. An extremely scarce stamp especially so with the sheet margin, Gibbs records, on page 89, a possible 15 unused examples from two different settings. Signed Herbert Bloch. Cert. Holcombe (1989) Gi = £ 9'500.

*Provenance: Collection Marquess of Bute, RL, London, 29 April 1959, lot 139 (right hand stamp of the corner pair).*

26e      \*      **2'000**      (€ 1'800)

26g      **3'000**      (€ 2'700)

1914, High Values



SMS 'Hohenzollern'



3940



3941

			Gibbons	Start price in CHF	Start price approx. €
3940	1 s. on 1 m. carmine, Setting 2, position 1, an unused example, centred to lower right, of rich colour and fine, large part og., tiny hinge thin at top not detracting from appearance. Just 128 examples of both 1 mark stamps (Gi 12 and 27) were surcharged. A rare stamp. Cert. BPA (1980) Gi = £ 5'000. Provenance: Collection Robert M. Gibbs, Corinphila sale 78, 27 Sept 1988, lot 1902.		27	*	1'500 (€ 1'350)
3941	3 s. on 3 m. violet-black, Setting 7, probably position 4, an unused example, well centred and of excellent strong colour, fresh and very fine appearance, slightest of corner gum loss on reverse, otherwise superb og. Just 87 of the 3 mark value were surcharged (Gi 14 and 29). An exceedingly rare stamp. Cert. Holcombe (1996) Gi = £ 10'000. Provenance: Corinphila sale 83, Sept 1991, lot 7989. Harmers, London, 29 Jan 1997, lot 924.		29	*	2'000 (€ 1'800)

1915, Provisional Issue



Australian Naval & Military Expeditionary Forces



3942

**3942** 1 d. on 2 d. on 10 pf. carmine, Setting 1 position 9, a fine unused example of excellent colour and centering with "**Large 1 superimposed over 2 of 2 d.**", an unrecorded example from this position of the Setting. Gibbs, page 92, recorded four examples (two unused from positions 3 and 7, positions 8 and 10 on cover, ex Bute), and it is likely that this is the final 'missing' example from the Setting and that just the five stamps were actually surcharged. Fresh and very fine with superb large part og. A great rarity in wonderful condition. Cert. RPS (1966), BPA (1996) Gi = £ 28'000.

Gibbons

Start price  
in CHF

Start price  
approx. €

31

\*

**10'000** (€ 9'000)



## 1915, Registration Labels Surcharged for Postage



3943



3945

- 3943** 'GRI / 3d.' on Rabaul label (#773), Setting E, position 3, a fine used example cancelled by 'Stephansort' cds in black (Gibbs type 6), fresh and fine with some gum intact on reverse, illustrated in Gibbs on page 56. Scarce stamp Gi = £ 325.

Gibbons

Start price  
in CHF

Start price  
approx. €

33

**120** (€ 110)



3944

- 3944** 'GRI / 3d.' on Rabaul labels (# 816/811), Setting C, positions 5/5, the fine unused vertical pair, with no hyphen in Deutsch Neuguinea, upper stamp with variety "**GRI / 3 d., Surcharge Double**", with the second 3 d. surcharge struck between both stamps, the lower label with normal surcharge; fresh and very fine with large part og. Corner bend on no real significance, an extremely rare and attractive variety. Cert. Holcombe (1992) Gi = £ 5'275+.

*Provenance: Corinphila sale 84, Oct 1992, lot 6376.*

33+ 33a

\*

**1'500** (€ 1'350)

- 3945** 'GRI / 3d.' on Rabaul label, (#848), Setting E, position 4, a fine unused example, trimmed at top, showing variety "**No bracket after Deutsch-Neuguinea**", fresh and fine with large part og. Gi = £ 1'500.

*Provenance: Corinphila sale 118, Oct 1999, lot 7157.*

33de

\*

**400** (€ 360)



3946

- 3946** 'GRI / 3d.' on Rabaul label (#162), variety "No bracket after Neuguinea", with further variety: 'GRI / 3d.' overprint in black double, an unused example with minor crease on top left corner perforation, otherwise fresh and very fine, unused without gum. An exceedingly rare stamp: just two unused examples of the "Double Overprint" variety are recorded, this stamp certainly unique with the 'missing bracket' variety. A rarity for the specialist. Cert. Ceremuga (2018) Gi = £ 16'000+.

33da/de var

(\*)

**5'000** (€ 4'500)



*Fred Hagen  
Stamp Importer and  
Philatelic Publisher in  
Sydney*

3947

Gibbons

Start price  
in CHF      Start price  
approx. €

- 3947** Registered cover to Fred Hagen in Sydney, trimmed at right, franked by January 1915 3 d. "Rabaul" registration stamp, Australia Kangaroo 2 d. grey perforated 'O.S.' and North West Pacific Islands 1 d. and 2 d. all tied by oval framed RABAU datestamps (June 8, 1915) in violet with PASSED BY CENSOR below. Central file fold just away from adhesives but a rare franking.

33



**300** (€ 270)



3948

- 3948** 'GRI / 3d.' on Friedrich-Wilhelmshafen labels (#380-379 / 375-374), Setting B, positions 1-2 / 1-2, (Deutsch Neuguinea), a fine unused block of four, without gum, very minor wrinkles but a rare and extremely fine multiple GI = £ 1'000+.

35



**350** (€ 315)



3949



3950

- 3949** 'GRI / 3d.' on Herbertshöhe label (#689), Setting A, position 2, an unused example with '(Deutsch - Neuguinea)' with hyphen, fresh and fine, unused without gum. Signed Holcombe GI = £ 500.

36e



**180** (€ 160)

- 3950** 'GRI / 3d.' on Herbertshöhe labels (#467 / 462), Setting B, positions 4/4, a fine unused vertical pair, without gum and minor diagonal crease that does not detract from appearance, both stamps with variety "No Stop 3 d.". Rare and attractive multiple. Signed Holcombe GI = £ 1'000.

36a



**350** (€ 315)



Surrender of German troops in Herbertshöhe



3951

Gibbons  
Start price in CHF    Start price approx. €

**3951** 'GRI / 3d.' on Herbertshöhe labels (#592-591), Setting HB, position 10, the famous unused horizontal pair with variety **"Surcharge Omitted in pair with Normal"**, with left hand example normal and right hand example with surcharge entirely omitted, the pair with minor corner crease at lower left of 592 and sensible reinforcement hinge and without gum. However, this is the pair mentioned in the Gibbs handbook on pages 60 and 100, and is entirely unique. A great rarity and a stunning variety. Cert. BPA (2017) Gi = £ 18'000.

36+ 36d    (\*)    **10'000**    (€ 9'000)



3952

**3952** 'GRI / 3d.' on Kawieng labels (#47-46 / 42-41) on thicker paper, Setting B, positions 4-5/4-5, a fine unused block of four with 'Deutsch Neu-Guinea', the left hand vertical pair each with surcharge variety "No Stop after d.", fresh and very fine, without gum. A scarce and most attractive multiple. Cert. BPA (1991) Gi = £ 1'750+.

37b+ 37ba    田(\*)    **500**    (€ 450)





Commonwealth Bank of Australia opened its first branch in Kāwieng mainly to serve the needs of the military administration and the Australian soldiers



3953



John Crichton-Stuart,  
4th Marquess of Bute  
1881-1947

3953 'GRI / 3d.' on Kāwieng labels (#967-966 / 962-961 / 957-956 / 952-951), Setting A, positions 5-6 repeated, an unused block of eight 'Deutsch Neu-Guinea', with the varieties "Double Surcharge - "3d." Only Doubled", on stamps 967 and 966, together with stamp 966 showing "No Hyphen between Neu and Guinea" (this being mentioned in Gibbs on page 101 as unique if located, and as yet unlisted by Stanley Gibbons), a splendid multiple, some blunting of the perforations at right, otherwise fresh and fine, unused without gum. Just five stamps with the "Double Surcharge" variety exist and label 966 is entirely unique. A splendid and very rare multiple for the connoisseur. Cert. Holcombe (1999) Gi = £ 17'950+. Provenance: Collection Marquess of Bute, RL, London, 29 April 1959, lot 256.

Gibbons		Start price in CHF	Start price approx. €
37+ 37b+	37bc+ 37 var	田(*) 10'000	(€ 9'000)



3954



3955

Gibbons

Start price  
in CHFStart price  
approx. €

- 3954** 'GRI / 3d.' on Kieta labels (#27-26 / 22-21), Setting B, positions 4-5/4-5, an unused block of four 'Deutsch - Neuguinea', left hand stamps both showing the variety **"No Stop after d."**, fresh and fine, with large part og. A rare and attractive positional multiple in the foremost quality. Signed Holcombe Gi = £ 2'600.

38+ 38b

田\*

**750**

(€ 675)

- 3955** 'GRI / 3d.' on Kieta labels (#286 / 282), Setting B, positions 4/4, an unused vertical pair 'Deutsch - Neuguinea', both stamps with variety **"No Stop after d."**, the upper stamp also showing **"Broken leg to K" of "Kieta"**, fresh and very fine unused, without gum. Scarce and fine pair. Cert. RPSL (1962) Gi = £ 1'700+.

38b var +  
38b

(\*)

**500**

(€ 450)



3956



3957

- 3956** 'GRI / 3d.' on Kieta labels (#200/195), Setting H, positions 1/6, an unused vertical pair 'Deutsch - Neuguinea', upper stamp with manuscript pen mark across the value, lower stamp with variety **"G of G.R.I. Omitted"**, and also part of the 'stop' after 'G', fresh and very fine with one pulled perf at left, a famous pair, mentioned in the Gibbs handbook on page 102, this being the sole example recorded with this error. Exceptional and of extreme importance to GRI philately. Unique. Cert. BPA (2017) Gi = £ 8'450.

*Provenance: Collection Tim Rybak, Belgrave, Melbourne, 26 April 2008, lot 129.*

38+ 38f

(\*)

**4'000**

(€ 3'600)

- 3957** 'GRI / 3d.' on Stephansort labels (#958 / 953), Setting G, positions 3/8, a used vertical pair 'Deutsch Neu-Guinea', cancelled by central strike of 'Stephansort' datestamp (Gibbs type 6) in black. Note also the dropped 'e' in 'Deutsch' on the lower stamp. Scarce and very fine multiple, just 50 labels were overprinted for postage from this setting (numbered between 951 and 1000), Gibbs stating on page 103 of the handbook, that no unused examples are recorded, this being one of just three known multiples. Cert. Holcombe (1993) Gi = £ 8'500.

*Provenance: Corinphila sale 87, Oct 1993, lot 2496.*

40

**2'500**

(€ 2'250)



3958



3959

- 3958** 'GRI / 3d.' on Friedrich Wilhelmshafen (with serifs) label (#862), Setting B, position 4, an unused example, 'Deutsch - Neuguinea', showing variety **"No stop after d."**, and further breaks under "De" of "Deutsch", perfs. somewhat blunted all round, fresh and very fine, with large part og. A scarce stamp. Opinion Holcombe (1995) Gi = £ 450.

41b

\*

**150**

(€ 135)

- 3959** 'GRI / 3d.' on Kāwieng (with serifs) label (#77), Setting B, position 4, a fine unused example showing variety **"No Stop after d."**, fresh and fine, without gum. A scarce stamp. Cert. BPA (1998) Gi = £ 475.

42a

(\*)

**200**

(€ 180)



Stamps of Marshall Islands surcharged  
1914, G.R.I. and Value 5 mm apart



3960



3961



Robert Martin Gibbs

- 3960

1 d. on 5 pf. green, a used horizontal pair on small piece, cancelled by MOROBE / 31 MRZ 1915 datestamp in brownish ink, cancellation unrecorded by Gibbs. Rare and most unusual piece.
- 3961

2 d. on 10 pf. carmine, Setting 2, position 1, an unused example showing variety "No Stop after "G" in G.R.I.", a fresh and fine example with large part og. Gibbs states, on page 115 of the handbook that this variety is 'comparatively rare' as the flaw only came about during the final stages of Setting 2. Illustrated in the handbook on page 115. A rare and most appealing stamp. Signed Holcombe  $G_i = £ 850$ .  
*Provenance: Collection Robert M. Gibbs, Corinthila sale 78, 27 Sept 1988, lot 1981.*

Gibbons		Start price in CHF	Start price approx. €
51	△	200	(€ 180)
52e	*	300	(€ 270)



3962

- 3962

2 d. on 10 pf. carmine, Setting 2, a used horizontal pair on 1915 philatelic cover addressed to Victoria, neatly tied by RABAUL / NEW BRITAIN oval datestamp (Jan 4, 1915) struck in violet (Gibbs type 8), with manuscript Censor at lower left "Passed C.W.C." in red ink. Slight closed tear in envelope at upper left and the cover probably never travelled, however a very rare issue on letter.  
*Provenance: Corinthila sale 143, May 2005, lot 4775.*



Government House in Rabaul





3963



3964



3965

Gibbons

Start price  
in CHFStart price  
approx. €

- 3963** 2 d. on 20 pf. ultramarine, Setting 2, positions 9-10, a used horizontal pair with the right hand stamp showing variety "**Surcharge Double**" running diagonally across the upper right corner, fresh and very fine, large part og. A scarce variety, Gibbs estimates that just 20 examples exist. Illustrated in Gibbs handbook on page 118. Signed Holcombe. Cert. BPA (2017) Gi = £ 4'000+.

*Provenance: Collection Robert M. Gibbs, Corinphila sale 78, 27 Sept 1988, lot 1992.*

53+ 53g

\*

**1'200**

(€ 1'080)

- 3964** 3 d. on 25 pf. black & red on yellow, Setting 2, position 2, a used example of good colour, fresh and fine, cancelled by large part RABAU / NEW BRITAIN oval datestamp (Gibbs type 8) in violet. A scarce stamp. Signed A. Diena, David Field. Cert. BPA (2018). Gi = £ 550.

*Provenance: Collection Marquess of Bute, RL, London, 29 April 1959*

*Collection Mathew Bennett, New York, 12 Nov 2004, lot 163.*

54

**150**

(€ 135)

- 3965** 3 d. on 25 pf. black & red on yellow, an unused example, well centred and of good colour, showing variety "**Surcharge Double**", fresh and fine, slight corner crease not affecting appearance, large part og. A scarce stamp, Gibbs, on page 117 of the handbook estimates that only 20 unused examples can exist. Signed Herbert Bloch, David Field. Cert. BPA (2017) Gi = £ 4'250.

*Provenance: Collection Marquess of Bute, RL, London, 29 April 1959, lot 166.*

*Spink, London, 9-10 March 2005, lot 1102.*

54g

\*

**1'000**

(€ 900)



3966



3967



3968



3969

- 3966** 3 d. on 30 pf. black & orange on buff, Setting 10, position 1, an unused example with variety "**Surcharge Inverted**", of good colour and centering, fresh and fine, large part og. Gibbs estimates, on page 119 of the handbook, that just 5 unused examples can exist. An extremely rare stamp. Cert. BPA (2017) Gi = £ 9'000.

*Provenance: Spink, London, 14 Dec 2004, lot 795.*

55g

\*

**2'500**

(€ 2'250)

- 3967** 4 d. on Marshall Islands 40 pf. black & carmine, Setting II with variety 'No Stop after "d" in 4 d.', fresh and fine unused example with full unmounted og. A scarce stamp. Gibbs 7a, Gi = £ 425.

56e

\*

**180**

(€ 160)

- 3968** 4 d. on 40 pf. black & carmine, Setting 10, position 4/4, an unused vertical pair, showing variety "**Surcharge Double**" on the upper stamp with lower stamp normal, fresh and fine, large part og. A very attractive and scarce multiple, Gibbs, on page 119 of the handbook estimates that only 10 unused examples can exist, this example illustrated in the handbook on page 118. Signed Holcombe, Kilian. Cert. BPA (2017) Gi = £ 7'000+.

*Provenance: Collection Marquess of Bute, RL, London, 29 April 1959, lot 168.*

*Collection Robert M. Gibbs, Corinphila sale 78, 27 Sept 1988, lot 2014.*

56+ 56g

\*

**2'500**

(€ 2'250)

- 3969** 5 d. on 50 pf. black & purple on buff, Setting 2, position 5, an unused example of good colour, showing variety "**d. in 5d. Omitted**", fresh and fine, superb large part og. A very rare stamp and a most appealing variety. Signed Bühler. Cert. RPSL (1976) Gi = £ 2'000.

*Provenance: Spink, London, 6 June 2003, lot 220.*

57f

\*

**750**

(€ 675)



3970



3971

Gibbons

Start price  
in CHF      Start price  
approx. €

**3970** 5 d. on 50 pf. black & purple on buff, Setting 10, position 4, an unused example with variety "**Surcharge Double**", both surcharges from the same position, of good colour and centering, light natural gum bend, fresh and fine, large part og. Gibbs records, on page 120 of the handbook, just 3 unused examples. An extremely rare stamp. Cert. BPA (2017) Gi = £ 10'000.

*Provenance: Harmers, London, 24 Aug 1998, lot 3371.*

57g

\*

**3'000** (€ 2'700)

**3971** 8 d. on 80 pf. black & carmine on rose, Setting 11, position 5, an unused example with variety "**Surcharge Inverted**", of good colour and centering, fresh and fine, large part og. Gibbs records, on page 120 of the handbook, just 4 unused examples. An immensely rare stamp. Cert. BPA (2017) Gi = £ 11'000.

*Provenance: Spink, London, 14 Dec 2004, lot 802.*

58h

\*

**3'000** (€ 2'700)

### 1914, High Values G.R.I. and Value 3½ - 4mm apart



3972



Robert Martin Gibbs



3973

**3972** 1 s. on 1 m. carmine, Setting 3, position 2, a fine used example, well centred, on small piece, tied by RABAU / NEW BRITAIN datestamp (Jan 4, 1915) in violet (Gibbs type 8). The stamp of fresh colour and superb. Only 133 stamps were surcharged. Illustrated in the Gibbs handbook on page 121. A wonderful example of a very rare stamp. Signed Holcombe. Cert. BPA (2017) Gi = £ 5'000.

*Provenance: Collection Robert M. Gibbs, Corinthila, sale 78, 27 Sept 1988, lot 2032.*

*Harmers, London, 21 Sept 1994, lot 1598.*

59

△

**1'000** (€ 900)

**3973** 2 s. on 2 m. blue, Setting 3, position 3, a fine used example, well centred and of good rich colour, tied to small piece by complete strike of RABAU / NEW BRITAIN datestamp (Jan 1, 1915) struck in violet (Gibbs type 8). A scarce stamp, just 245 of this value were surcharged and much rarer used than unused. Signed Holcombe Gi = £ 4'000.

*Provenance: Collection Robert M. Gibbs, Corinthila, sale 78, 27 Sept 1988, lot 2035.*

*Harmers, London, 28 Jan 1998, lot 1535.*

60

△

**1'200** (€ 1'080)



3974



3975

- 3974** 2 s. on 2 m. blue, Setting 3, positions 1-2, an unused horizontal pair, marginal from the lower left corner of the sheet, diagonal crease in margin only, well centred and of vibrant rich colour, fresh and very fine with large part og. Second stamp showing variety "**No Stop after 'I' in G.R.I.**". Just 245 stamps surcharged, a wonderful and extremely scarce multiple. Cert. Holcombe (1991) Gi = £ 5'400+.

*Provenance: Corinphila sale 84, Oct 1992, lot 6412.*

- 3975** 3 s. on 3 m. violet-black, Setting 3, position 1, an unused example centred to left, of good rich colour, without gum. A very rare stamp with only 87 examples surcharged. Signed Brun, Champion, Holcombe Gi = £ 6'500.

*Provenance: Corinphila sale 83, Sept 1991, lot 8055.*

Gibbons

Start price  
in CHF      Start price  
approx. €

60+ 60b      \*      **2'000**      (€ 1'800)

61      (\*)      **1'000**      (€ 900)



3976

- 3976** 5 s. on 5 m. carmine & black, Setting 3, position 2, a fine unused example of good strong colour, centred to lower right with variety "**No Stop after 'I' in G.R.I. Replaced**", fine large part og. Just 72 stamps were surcharged and the 'Replaced Stop' presumably can be found on only 18 examples. Rare and most unusual stamp. Certs. BPA (1935 and 1958), Holcombe (1997) Gi = £ 14'000.

62 var      \*      **4'000**      (€ 3'600)



3977

- 3977** 5 s. on 5 m. carmine & black, Setting 3, position 1, a fine used example of good strong colour, well centred, used on small part piece and cancelled by complete RABAU / NEW BRITAIN datestamp (Jan 22, 1915) in violet (Gibbs type 8). Fine and attractive usage of this exceedingly rare stamp. Cert. BPA (2017) Gi = £ 15'000.

62      △      **4'000**      (€ 3'600)



## 1915, Provisional Issue G.R.I. and Value 5 - 6 mm apart



3978



3979



3980



Robert Martin Gibbs

Gibbons

Start price  
in CHFStart price  
approx. €

- 3978** 1 d. on 2 d. on 20 pf. ultramarine, Setting 2, position 1, a fine unused example with sheet margin at left, slightest of diagonal bends at top and the sheet margin reinforced with hinge, a fine og. example of an extremely rare stamp. Signed Herbert Bloch. Cert. BPA (2017) Gi = £ 4'000.

64

\*

**800**

(€ 720)

- 3979** 1 d. on 3 pf. brown, Setting 7, position 4, a fine unused example but for slight surface scuff on 'M' of 'Marshall', fresh and fine, large part og. A very rare Setting and stamp: supplies of the 3 pf. ran out during the printing of the last Provisional issue. Signed Holcombe. Cert. BPA (2017) Gi = £ 3'500.

*Provenance: Collection Robert M. Gibbs, Corinthia sale 78, 27 Sept 1988, lot 2057.*

64c

\*

**1'000**

(€ 900)

- 3980** 1 d. on 5 pf. green, Setting 12, position E, a fine used example showing **variety "I" for "1" in value**, cancelled by oval RABAU / NEW BRITAIN datestamp in violet (Gibbs type 8). An extremely rare stamp. Cert. BPA (1960) Gi = £ 4'250.

*Provenance: Collection Marquess of Bute, RL, London, 29 April 1959.*

*Collection Robert M. Gibbs, Corinthia sale 78, 27 Sept 1988, lot 2061.*

64dd

**1'000**

(€ 900)



3981

- 3981** 2 d. on 10 pf. carmine, Setting 12, position E, an unused example of good colour, centred to lower right, with surcharge error **"G.R.I. / 2 d. struck Sideways and Reading up"**, fresh and very fine with large part og. An extremely scarce stamp with very few known examples. Cert. BPA (2017) Gi = £ 16'000.

*Provenance: Spink, London, 12 Dec 2004, lot 806.*

64ea

\*

**5'000**

(€ 4'500)



John Crichton-Stuart,  
4th Marquess of Bute  
1881-1947



3982



3983

- 3982** 2 d. on 20 pf. ultramarine, Setting 12, position E (with defective "I" in G.R.I.), a fine unused example of excellent colour and centering, fresh and fine appearance, one light tone spot on large part og. A rare stamp, Gibbs states 'a few copies have been recorded'. Signed David Field, Holcombe. Cert. BPA (2017) Gi = £ 4'000.

*Provenance: Collection Marquess of Bute, RL, London, 29 April 1959.*

*Corinthia sale 118, Oct 1999, lot 7204.*

64f

\*

**1'000**

(€ 900)

- 3983** 8 d. on 80 pf. black & carmine, a fresh unused example of excellent colour and centering from a late setting, superb large part og. An extremely rare stamp. Ex Holcombe. Cert. Ceremuga (2018) Gi = £ 7'500.

64m

\*

**2'000**

(€ 1'800)



Post Office in Jaluit



3984



Robert Martin Gibbs

Gibbons  
Start price in CHF  
Start price approx. €

**3984** 1 s. on 1 m. carmine, Setting 5B, a fine unused example centred slightly to left, of excellent fresh colour and large part og. Illustrated in the Gibbs handbook on page 126. A superb example of this extremely rare stamp in the foremost quality. Signed Holcombe. Cert. BPA (2017) Gi = £ 17'000.  
*Provenance: Collection Robert M. Gibbs, Corinphila sale 78, 27 Sept 1988, lot 2078.*

64n \* **7'500** (€ 6'750)



3985

**3985** 2 s. on 2 m. blue, Setting 5B, a fine unused example with variety "Large "S" in 5 s.", the "S" from a different font, centred slightly to right, of superb appearance with vivid colour and superb large part og. A wonderfully fresh example of this great rarity: Gibbs states, on page 127 of the 1987 handbook "the Large "S" variety may exist but it has not been recorded to date". This being the first and only example recorded. Unique. Cert. BPA (2000) Gi = £ 19'000.

64oa \* **7'500** (€ 6'750)



*John Chrichton-Stuart  
(1881-1947)  
4th Marquis of Bute*



3986

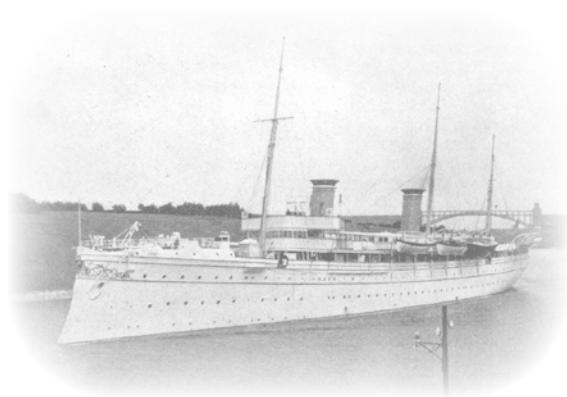
Gibbons

Start price  
in CHF      Start price  
approx. €

**3986** 3 s. on 3 m. violet-black, clearly from Setting 7 as this is a very clean-cut surcharge, a fine unused example showing variety "**Surcharge Inverted**", centred to left and with excellent colour, minor natural aging and gum bend with large part og. A magnificent stamp, illustrated in Gibbons on page 125 who states '*One unused example has been recorded to date, it is ex Bute*'. A splendid and unique variety. Signed David Field. Cert. BPA (2017) Gi = £ 65'000.  
*Provenance: Collection Marquess of Bute, RL, London, 29 April 1959, lot 229.  
Collection Tim Rybak, Belgrave, Melbourne, 26 April 2008, lot 170.*

64pe      \*      **25'000** (€ 22'500)





SMS 'Hohenzollern'



3987

**3987** 5 s. on 5 m. carmine & black, Setting 5B, a fine unused example of good centering and fresh colour, paper perhaps a tad aged, large part somewhat browned og. Illustrated in Gibbs on page 126. A magnificent example of this rare stamp, just 30 examples surcharged. Signed Herbert Bloch, A. Diena, Holcombe, Kilian. Cert. BPA (2017) Gi = £ 38'000.  
*Provenance: Collection Robert M. Gibbs, Corinphila sale 78, 27 Sept 1988, lot 2081. Harmers, London, 24 July 1997, lot 225.*

Gibbons	Start price in CHF	Start price approx. €
64q	* <b>10'000</b>	(€ 9'000)

1915, Official Issue G.R.I. and Value 3½ mm apart



3988

**3988** 'O.S. / GRI' 1 d. on 3 pf. brown, Setting 3, a fine unused block of six (3 x 2) from upper right corner of the sheet, positions 8-10/18-20, showing variety "1 and "d." spaced" on the left hand vertical pair, fresh and fine, trivial gum bend on first stamp and slightest of aging on unmounted og. A fine and scarce positional multiple Gi = £ 300+.

Gibbons		Start price in CHF	Start price approx. €
O1+ O1a	田**	150	(€ 135)



3989

**3989** 'O.S. / GRI' 1 d. on 3 pf. brown, Setting 3, the famous vertical pair, marginal from base of sheet with "Guinea" imprint, upper stamp with variety "**Surcharge Double**", lower stamp normal, fresh and very fine with superb og. Gibbs states that the double surcharges were all found on the same sheet in vertical pairs from horizontal row 9 (page 106-107 in the handbook) and traces 9 existing examples. Illustrated in Gibbs on page 106. A wonderful and rare pair, in the foremost quality. Signed Herbert Bloch, Hermann-Giesecke. Cert. BPA (1981) Gi = £ 5'500+.  
*Provenance: Collection Colonel E. H. R. Green, Harmer Rooke, New York, 25-29 March 1946, lot 869.  
Corinthila sale 80, March 1990, lot 6731.*



Col. E. H. R. Green

O1+ O1b	*	2'000	(€ 1'800)
---------	---	-------	-----------



3990



3991

- 3990** 'O.S. / GRI' 1 d. on 3 pf. brown and 1 d. on 5 pf. green, each in unused horizontal pairs, fresh and fine og., together with 1 d. on 3 pf. used on piece tied by 'Rabaul / New Britain' datestamp in violet, and 1 d. on 5 pf. green tied to small piece by 'Rabaul' cds in black Gi = £ 475+.
- 3991** 'O.S. / GRI' 1 d. on 5 pf. green, Setting 3, an unused strip of five from top right corner of the sheet positions 6-10, showing on position 8 the variety "1 and "d." spaced", fresh and fine but for splitting between second and third stamp, unmounted og. Scarce positional multiple Gi = £ 600.

Gibbons		Start price in CHF	Start price approx. €
O1+ O2	△*	100	(€ 90)
O2+ O2a	**	200	(€ 180)



Mess Hall in Rabaul



3992

- 3992** 'O.S. / GRI' 1 d. on 3 pf. brown, Setting 3, position 6 (with surcharge shifted to left), used on local envelope written by Captain Fry and mailed within Rabaul, tied by RABAU / NEW BRITAIN datestamp (17 Oct 1915) in violet (Gibbs type 8). Straight line CENSORED at left also in violet. An extremely scarce issue on letter. Signed Holcombe. Cert. BPA (1980).
- 3993** The collection with October 1914 1 d. on 3 pf. to 8 d. on 80 pf. unused, 2 d. on 20 pf. pair on small piece used on first day of issue in Rabaul, December 1914 1 d. on 3 pf. unused (one with Holcombe opinion), 1 d. on 5 pf. green unused (5), 2 d. on 10 pf. carmine unused, 2½ d. on 10 pf. carmine unused (4) and used (2); overprinted on Marshall Islands Dec 1914 set of nine values from 1 d. on 3 pf. to 8 d. on 80 pf. (ex Harmers, November 1994) fine unused, 1 d. on 5 pf. green with unused (4, one with BPA cert.) and used, 2 d. on 20 pf. ultramarine unused (Opinion Holcombe), 3 d. on 25 pf. used (signed Kilian), provisional Jan 1915 1 d. on 2 d. on 10 pf. carmine unused and used. Generally fine, a scarce assembly (48 items).

O1	✉	500	(€ 450)
1-63		750	(€ 675)



PAPUA NEW GUINEA

Lakatoi - Essays & Proofs



Lakatoi of Papua New Guinea

3994

Gibbons

Start price  
in CHF

Start price  
approx. €

**3994** 1901: De La Rue working Die Proof in deep black of the vignette only inset on surfaced paper (63 x 61 mm.), with manuscript at top "*British New Guinea*", dated on the Proof "*11 - 21 Jan 1901*" and again dated at base "*19 Jan*" in pencil, with small blue crayon tick of approval at right in blue crayon. Cleaned from necessity at lower right but a beautiful and extremely rare Proof for the connoisseur of the issue.  
*Provenance: Collection Tom Belknap (1987);*  
*Collection Peter Troy, Prestige, Belgrave, 28 July 2009, lot 2034.*

1 Proof

(\*)

1'500 (€ 1'350)



3995

**3995** 1900/05: De La Rue engraved Plate Proofs (7), imperforate on ungummed unwatermarked paper without value tablet, with completed central Lakatoi vignette in black on each, the near complete set of seven in the adopted colours of yellow-green (½ d.), violet (2 d.), ultramarine (2½ d.), sepia (4 d.), myrtle-green (6 d.), orange (1 s.) and brown (2 s. 6 d.); largely fresh and very fine, a scarce and attractive assembly of great scarcity.

1/8 Proofs

(\*)

3'000 (€ 2'700)

## Lakatoi - Issued Stamps



3996



Gibbons

Start price  
in CHFStart price  
approx. €

- 3996** 1901/05: Lakatoi first issue, the complete set of eight values in unused blocks of four, all except the 2 s. 6 d. value in matching top right hand corner blocks, slight scuff on the 1 s. block but largely fresh and fine, large part or unmounted og. A scarce set Gi = £ 3'400+.

1/8 田\*/\*\*

**750**

(€ 675)



3997

- 3997** Lakatoi 2½ d. black & dull blue, wmk. horizontal, thick paper, line perf. 14, a fine unused example of this rare shade, well centred, large part og. Gi = £ 900.  
*Provenance: Collection 'Dr. Gyp' (Ettore Pedrazzo), Adriano Landini, Milan, 14 Feb 1992, lot 2411.*

4ab

\*

**200**

(€ 180)



3998

- 3998** 1902: Registered cover to USA franked by 1901 ½ d. black & yellow-green (2), 1 d. black & carmine (2), 2 d. black & violet and 2½ d. black & ultramarine cancelled by "BNG" obliterations and by 'Port Moresby' cds (July 31). Reverse with Cooktown cds, Brisbane (Aug 12) transit, and re-addressed on arrival from Tacoma to Boston via Springfield (Sept 11). A rare and attractive first issue cover, together with a 1933 registered Iremonger cover with 1932 OS Official 9 d. lilac and violet (Gi 032) cancelled at Buna Bay.

✉

**250**

(€ 225)



3999



4000



4001

Gibbons

Start price  
in CHFStart price  
approx. €

- 3999** 1901/05: Lakatoi 4 d. black & sepia, wmk. vertical, thick paper, a fine unused example of excellent centering and colour, showing variety **"Deformed d" at left**, from position 18 on the sheet, pencil annotations on large part og. A scarce stamp Gi = £ 600.
- 4000** Lakatoi 4 d. black & sepia, wmk. vertical on thin paper, comb perf., an unused example with variety **"Deformed d" at left**, fresh and very fine with superb og. A rare stamp Gi = £ 3'250.
- 4001** Lakatoi 2 s. 6 d. black & brown on thin paper with vertical wmk., comb perf. 14, a fine unused example with large part og. A scarce stamp. Signed A. Diena.

13a	*	<b>120</b>	(€ 110)
13ba	*	<b>750</b>	(€ 675)
16a	*	<b>200</b>	(€ 180)



4002



4003



4005

- 4002** 1907: Lakatoi 1/2 d. black & yellow-green, overprinted small **"Papua"** in black, wmk. vertical, comb perf. 14 on thin paper, a fine unused example showing variety **"Overprint Double"**. Overprints close together but clearly doubled, fresh and very fine, large part og. Cert. G. Bühler (1986) Gi = £ 3'500.
- 4003** Lakatoi 1 d. black & carmine, overprinted small **"Papua"** in black, wmk. vertical, comb perf. 14 on thin paper, a used example with sheet margin at right showing the variety **"Overprint Reading Upwards"**, neatly cancelled by Port Moresby datestamp in black. A rare and most appealing stamp. Cert. BPA (1998) Gi = £ 4'500.
- 4004** No Lot
- 4005** 1907/10: 2 d. black & purple, Jan 1910 printing, perf. compound 11 and 12 1/2, a fine unused example, marginal from left of sheet, position 11 with Retouch on top of Hill at right, fresh and very fine, large part og. A superb example of this very scarce stamp Gi = £ 1'700+.  
*Provenance: Collection 'Dr. Gyp' (Ettore Pedrazzo), Adriano Landini, Milan, 14 November 1992, lot 2452.*
- 4006** 1901/39: Unused collection with vertical watermark values to 1 s., 1906 values (Gi 17/26) fine unused including duplication and 'White Leaves' varieties, 1907 issue with line perf. 2 s. 6 d. pair with one stamp showing inverted 'd' for 'p' in 'Papua' opt., 1907/10 with 2 s. 6 d. (4), perf. 11 with values to 12 s. incl. varieties with some ex Dr. Gyp (Pedrazzo) collection; perf. 12 1/2 set of four incl. 4 d. with Deformed "d" variety; 1909/10 perf. 11 complete set with additional varieties, 1909/10 perf. 12 1/2 complete set with additional varieties incl. 2 1/2 d. with thin 'd'; 1910 large Papua set of nine complete and additional varieties (most ex 'Gyp'); 1911/15 set complete and additional shades and varieties; 1916/31 extensive selection with many multiples and varieties including a sheet of 40 of the 1 d. grey-black & red, 3 d. error of colour but with toned perf. at right, 6 d. in marginal block with one stamp showing POSTAGE variety, further imprint strips etc.; 1931/32 Official set complete etc. Generally fine to very fine, an exceptional collection.
- 4007** 1916/31: 4 d. light brown & orange, a complete sheet of 40 subjects (5 x 8), with full JOHN ASH imprint perforated through at base, position 2 with 'rift in sky' flaw, fresh and fine, large part or unmounted og. Gi = £ 800+.
- 4008** No Lot

38a	*	<b>750</b>	(€ 675)
39a		<b>1'000</b>	(€ 900)
73	*	<b>300</b>	(€ 270)
9-167	田*/**	<b>2'000</b>	(€ 1'800)
99a	*/**	<b>180</b>	(€ 160)



Later Issues



4009

Gibbons

Start price in CHF      Start price approx. €

**4009→** 1929/30: Ash Airmail 3 d. black & blue-green on white paper, an unused horizontal pair with large part JOHN ASH imprint, showing variety: "Air Mail overprint Omitted in Horizontal Pair with Normal". Diagonal pre-printing paper fold which probably caused the variety, fresh and fine, large part og. A very rare pair. Cert. BPA (1998) Gi = £ 8'000.

114a

**2'000** (€ 1'800)



4010

**4010→** Ash Airmail 3 d. black & blue-green on white paper, an unused block of four with lower pair showing variety: "Air Mail overprint Omitted in Vertical Pair with Normal", positions 9-10/14-15 on the sheet of 30 subjects. Fresh and very fine, with superb large part og. A remarkable and extremely rare multiple. Cert. Ceremuga (2018) Gi = £ 15'000+.

114b

田\*

**4'000** (€ 3'600)



4011

- 4011→** 1930: Harrison printing 3 d. sepia-black & bright blue-green on yellowish paper, overprinted 'Plane & Air Mail' in carmine, an unused sheet marginal block of four from the J. G. Spychiger sheet, positions 21-22/26-27, one light age spot in margin, fresh and fine somewhat browned gum, with lower pair unmounted og. Extremely rare and attractive multiple. Cert. Ceremuga (2018) Gi = £ 15'000+.
- 4012→** Airmail 6 d. dull & pale purple optd. in carmine, a fine unused sheet of 40 subjects, with full T. S. HARRISON imprint at base, showing position 32 with POSTAGE for POSTAGE error, position 38 showing 'Dot in first 'P' of Papua', fresh and fine, large part or unmounted og.

Gibbons

Start price  
in CHF      Start price  
approx. €

115      田\*/\*\*

**4'000**      (€ 3'600)

116+ 116a      田\*/\*\*

**150**      (€ 135)



4013

- 4013→** Airmail 1 s. sepia & olive, overprint in carmine, a fine unused example, variety "**Overprint Inverted**", fresh and very fine colour, superb large part og. A superb example of an extremely rare stamp. Signed Kessler, Sanabria. Cert. Ceremuga (2018) Gi = £ 15'000.

117a

\*

**5'000**      (€ 4'500)