

TASMANIA

- 1804** Governor Collins arrived with over 400 convicts from Port Phillip (Victoria).
- 1824** Van Diemen's Land was proclaimed independant of New South Wales.
- Prior to 1825** Tasmanian postal arrangements were under the authority of the Chief Postmaster in Sydney, NSW
- 1828** Errection of General Post Office in Hobart. Appointment of General Postmaster. First legislative Postal Act fixing letter rates.
- 1842** Distance-weight sliding scale abolished. Letters per ½ ounce weight in Hobart and Launceston 2d., Inland letters 4d.
- 1853** Van Diemen's Land was renamed Tasmania in August 1853. First adhesive postage stamps issued and use of adhesive stamps on letter mail made compulsory: 1d. per ½ ounce on town letters, 4d. per ½ ounce on inland and ship letters The first stamps printed from steel plates engraved by Perkins Bacon in London. Steel plates were then delivered to the Colony.

Corresponding 1d. and 4d. adhesive stamps locally engraved in steel plates by C.W.Coard, printed by H. and C. Best at the 'Courier' Newspaper Office.
- 1855** New stamp issue printed from steel plates engraved by Perkins Bacon in London. Steel plates were then delivered to the Colony for further printings.
- 1856** Tasmania was granted self-government.
- 1870** First Surface printing plates by De La Rue, typographed in the Colony.
- 1882** Fiscal stamps authorised for postal use.



*Colonel David Collins
1st Lt. Governor of Van Diemen's Land*



Southwest view of Hobart Town

Stampless Mail



View of Launceston



3377

Gibbons

Start price
in CHF

Start price
approx. €

- 3377** 1850: Entire letter from Launceston to London, struck with LAUNCESTON despatch cds (Jan 21) in black and rated '4' (pence) prepaid in red manuscript. Reverse with step-type FALMOUTH / *SHIP LETTER* in blue and charged '8' (pence) for this service.



100

(€ 90)

- 3378** No Lot

1853 (Nov.), First Issue on medium soft yellowish paper



3379

- 3379** 1 d. blue, a used horizontal pair, good even margins on left hand stamp, close but clear at upper right, slight marginal thin at top, lightly cancelled in black. An attractive pair $G_i = \pounds 3'000$.

2

750

(€ 675)

1853 (Nov.), First Issue on hard white paper



Downtown Launceston



3380

Gibbons

Start price
in CHF Start price
approx. €

- 3380** 1 d. pale blue, a very fine used example of good colour, ample to large margins all round, used on small 1855 envelope addressed locally, tied by "60" numeral obliterator of Launceston in black. Circular 'PRE-PAID / 10 O'CLOCK' datestamp in red at left (June 21, with year date showing '55' inverted). Seal removed from reverse and a couple of minor spike holes (addressed to the Australasian Bank) but a fine and very rare Town Post cover. Signed H. Köhler, Friedl.

3



3'500 (€ 3'150)

1853, Four Pence, plate I



3381

Gibbons

Start price
in CHFStart price
approx. €

- 3381** **Fine Engraving:** 4 d. bright red-orange, Plate 1, position 7, early-intermediate impression, imperforate on medium hard wove paper, a brilliant unused example with ample to large even margins all round, of exceptionally bright colour, light horizontal bend of no significance and not affecting the lovely appearance in any way. A delightful and very rare stamp. Cert. Ceremuga (2018) Gi = £ 8'500.

5

(*)

3'500 (€ 3'150)

3382



3383



3384

- 3382** 4 d. bright red-orange, Plate 1, imperforate on wove paper, a very fine used example with large margins all round, of superb bright colour, neatly cancelled by "62" numeral obliterator of Hobart in black. A delightful stamp Gi = £ 1'000.

5

350 (€ 315)

- 3383** **Second State of the Plate** 4 d. red-orange, a superb used pair with fine to huge margins on all sides, of excellent colour, minute thin spot between the stamps, beautifully cancelled by bold strike of "18" numeral obliterator of Campbell Town. Exceptional and most appealing multiple. Signed Holcombe Gi = £ 950+.

Provenance: Corinthila sale 72, September 1985, lot 7364.

7

350 (€ 315)

- 3384** 4 d. pale orange, a fine used example with large margins on all sides, of fine delicate colour, superbly cancelled by bold strike of "18" numeral obliterator of Campbell Town Gi = £ 450.

Provenance: Corinthila sale 72, September 1985, lot 7365.

9

150 (€ 135)

1853 (Nov.), Four Pence, plate II



3385



3386



3387

- 3385** **Coarse Engraving** 4 d. dull orange, Plate II, lines of background blurred, a used example with large margins all round, cancelled "Torquay 28/7/55" in manuscript ink. Rare and fine Gi = £ 425.

10

150 (€ 135)

- 3386** 4 d. orange, Plate II, lines of background blurred, an exceptional used example with good to large margins all round, minor corner bend of no importance as showing full imprint from position 24 at lower right of sheet "C. W. Coard Sc.", cancelled by fine "60" numeral obliterator of Launceston. A wonderful and very rare stamp Gi = £ 425+.

Provenance: Collection Louise Boyd Dale & Alfred Lichtenstein, Harmers, London 14 May 1990, lot 177.

10

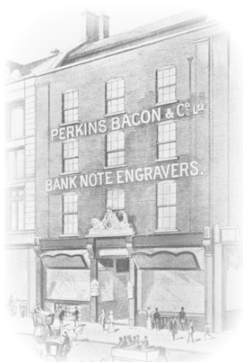
750 (€ 675)

- 3387** 4 d. dull orange, Plate II, lines of background blurred, a used example with even margins all round, cancelled by "59" numeral obliterator of Launceston in black Gi = £ 375.

11

150 (€ 135)

1855, Chalon Heads, London Printing



Office of Perkins, Bacon & Co.



3388



3389

- 3388** 1854: Perkins Bacon Humphrys head-plate Die, reprinted impressions (4) of the head-plate only, inset on wove paper, in brown on cream, carmine on yellowish, green on white and orange on white. A charming group.
- 3389** Perkins Bacon Die Proof for the rejected / unfinished Transfer 1 d. Die, printed in steel-blue on soft surfaced white card, 46 x 88 mm., without 'Van Diemens Land' at top. For similar examples in black and vermillion see Sebastian Earl lots 2086 and 2087. A rare and beautiful Proof.

Gibbons

Start price
in CHF

Start price
approx. €

14 Proofs

(*)

200

(€ 180)

14 Proof

(*)

500

(€ 450)



3390



3391

- 3390** 1855 1 d. carmine, wmk. Large Star, imperforate, an unused example of outstanding fresh colour, good even margins all round, unused without gum. Superb and rare. Signed Holcombe. Cert. RPSL (1972) Gi = £ 10'000.
- 3391** 1854: Perkins Bacon 2 d. value, the Master Die Proof in black on India on thick card, 30 x 34 mm., superb Proof of gorgeous execution and extremely rare.
Provenance: Spink, 9 Nov 2006, lot 2206.

14

(*)

3'000

(€ 2'700)

15 Proof

(*)

2'500

(€ 2'250)



		Gibbons		Start price in CHF	Start price approx. €
3392	Perkins Bacon Plate Proofs for the 2 d. value, imperforate horizontal pairs (3), printed in black on poor quality medium wove paper, one with vertical pre-printing paper-fold, another with prominent re-entry on TWO PENCE. A fine group.	15 Proofs	(*)	150	(€ 135)
3393	Perkins Bacon Plate Proof for the 2 d. value, imperforate block of four, printed in black on poor quality medium wove paper.	15 Proof	田(*)	150	(€ 135)



3394

3394	Perkins Bacon Plate Proofs for the 2 d. value, imperforate block of sixteen, marginal from right of sheet, printed in black on poor quality medium wove paper. Fresh and fine, a delightful multiple.	15 Proof	田(*)	350	(€ 315)
3395	No Lot				



3396



3397

Gibbons

Start price
in CHF Start price
approx. €

- 3396** 1855 2 d. green, wmk. Large Star, imperforate, a fine used example of excellent appearance with good to large margins all round, corner crease unapparent on face, cancelled by "52" numeral obliterator of Ross in black Gi = £ 450.

16

150 (€ 135)

- 3397** 4 d. deep blue, wmk. Large Star, imperforate, a very fine used example with large margins on all sides and portion of adjoining stamp at right, neatly tied to small piece by "60" numeral obliterator of Launceston and by diamond 'Pre-Paid' datestamp in red. Slight hole in piece but a delightful stamp Gi = £ 130.

17

△

120 (€ 110)

3398



Launceston Post Office

- 3398** 4 d. blue, wmk. Large Star, imperforate, an attractive horizontal strip of three used on 1856 cover to London at double rate endorsed '*pr. Sardinian*', the adhesives with margins touched to huge, tied by "60" numeral obliterations of Hobart in black, and by diamond POST-OFFICE / LAUNCESTON / Crown datestamp (June 21) in red and London arrival cds (Oct 14). A fine and most attractive cover.

18

✉

750 (€ 675)

1856/57, Chalon Heads, Local Printing by H. C. Best without watermarks



3399

- 3399** 1 d. pale brick-red, no wmk., imperforate, a superb used example with large margins all round, of fine delicate colour, lightly cancelled by "64" numeral obliterator of Hobart in black. A rare and fine stamp. Signed Roumet Gi = £ 650.

19

200 (€ 180)



3400

Gibbons

Start price
in CHF

Start price
approx. €

- 3400** Perkins Bacon Die Proof, reprinted from the rejected Die of the 6 d. value without inscriptions, the background to the head-plate differs from that of the issued Die, the central oval being carefully inserted but the gaps to the eight sided frame have not been completed. Rare and beautiful Proof.

Provenance: Collection Sebastian Earl, RL, Geneva, 25 April 1980, lot 2212.

25 Proof (*) **750** (€ 675)



3401



3402

- 3401** Perkins Bacon 6 d. dull lilac, wmk. Large Star, prepared for use but not issued, a fine unused example with clear to large margins all round, of rich colour for this stamp (of which just the one sheet was found and split up), tone spot and diagonal crease as usual Gi = £ 750.

(*) **150** (€ 135)

- 3402** 4 d. deep blue, no wmk., a superb used horizontal strip of five, with just clear to large margins all round with portions of adjoining stamps at top, in a fine deep shade, lightly cancelled by "61" numeral obliterations of Hobart in black. Diagonal crease and slight stain at upper right not detracting from the fine appearance of a rare multiple Gi = £ 650+.

Provenance: Collection Sebastian Earl, RL, Geneva, 25 April 1980, lot 2141.

Collection Professor Enrico Bombieri, Spink, Melbourne, 28 March 1999, lot 1071.

21 **750** (€ 675)

1857/67, Chalon Heads, Local Printing by H. C. Best with watermark 'Numerals'



3403



3404

- 3403** 1 d. brick-red, wmk. '1' upright, an unused example from left of sheet, verging on the vermillion shade, large margins all round, fresh and fine, large part og. Gi = £ 425.

26 * **150** (€ 135)

- 3404** 1 d. brick-red, wmk. '1' upright, a fine unused example with large margins all round, marginal from right of sheet, of good delicate colour and large part og. Rare Gi = £ 425.

26 * **200** (€ 180)



3405



Old Government House in Hobart

- 3405** 1 d. brick-red, wmk. '1' upright, a fine used example showing clear "Double Impression", tied to local 1864 cover to Government House by mute obliterator in black with framed FEE PAID datestamp (Sept 10) in red alongside. Cover cleaned and with slight staining but a rare example of a double print on letter.

Gibbons

Start price
in CHFStart price
approx. €

26

**200**

(€ 180)



3406

- 3406** 1 d. carmine, wmk. '1' upright, a fine unused example, large margins all round with marginal wmk. from left of sheet, variety "Double Impression", fresh and fine without gum, a most interesting major shift, most prominent on the value tablet Gi = £ 350+.

29 var

(*)

150

(€ 135)



3407

- 3407** 2 d. pale green, wmk. '2' upright, a used horizontal strip of four with large to huge margins all round (rare in a multiple of this size), cancelled by "103" numeral obliterations in black. Minor wrinkling not detracting from the appearance of a lovely strip.

31

200

(€ 180)



3408



3409



3410

- 3408** 2 d. yellow-green, wmk. '2' upright, a fine used horizontal pair in a pale shade with huge margins all round, lightly cancelled by "6" numeral obliterator of Bothwell. Corner crease at upper right but a charming multiple and most attractive. Cert. BPA (2018) Gi = £ 220+.
- 3409** 2 d. slate-green, wmk. '2' upright, a superb unused horizontal pair, large margins all round and in a deep shade, left hand stamp with "Hair on the Plate" flaw at top running through 'EN' of DIEMENS, fresh and very fine, superb og. Rare and splendid multiple Gi = £ 800+.
- Provenance: Collection Maurice Burrus, RL, London, 28 Nov 1962, ex lot 519.*
- 3410** 4 d. pale blue, wmk. '4' upright, an unused example from a 'dry' print, large margins all round, somewhat cracked large part og. Gi = £ 450.

32

100

(€ 90)

34

*

400

(€ 360)

36

*

150

(€ 135)



3411

- 3411** Perkins Bacon Die Proof for the completed 6 d. value in black on thick card, 40 x 42 mm., trivial aging mentioned for accuracy, a fresh and very fine example of the printer's art. Extremely rare.
Provenance: Collection Professor Enrico Bombieri, Christie's, Melbourne, 28 March 1999, lot 1043.

Gibbons			Start price in CHF	<i>Start price</i> approx. €
40 Proof	(*)	1'000		(€ 900)



3412

- 3412** Perkins Bacon Plate Proofs in black for the 6 d. and 1 s. values, each in fresh and fine blocks of four on white wove paper, the 6 d. a tad close at right but the 1 s. block with large margin at left. Scarce and attractive.

40+ 41 Proofs	田(*)	200	(€ 180)
------------------	------	------------	---------



3413



3414

- 3413** Perkins Bacon Trial Colour Plate Proof for the 1 s. value in deep vermillion on thick card paper, fresh and very fine.
- 3414** 1 s. vermillion, wmk '12' upright, a wonderful unused horizontal pair in a phenomenally bright shade, large even margins all round, folded between but barely affecting the appearance, superb with large part og. A magnificent multiple. Cert. BPA (1983) Gi = £ 1'600+.
Provenance: Collection Maurice Burrus, RL, London, 28 Nov 1962, lot 467.
Collection P. V. Robinson, SG, London, 17 May 1984, lot 92.
Collection Professor Enrico Bombieri, Christies, Melbourne, 28 March 1999, lot 1095.



Maurice Burrus

41 Proof	(*)	150	(€ 135)
41	*	1'000	(€ 900)



3415



3416



3417

Gibbons

Start price
in CHF Start price
approx. €

- 3415** 1 s. vermillion, wmk '12' upright, a wonderful used horizontal strip of four, large margins all round and imperceptibly touched at top on first two stamps, of good colour and cancelled by "59" numeral obliterations of Launceston. First stamp with minor vertical crease but a charming and extremely scarce multiple.

Provenance: Collection Sebastian Earl, RL, Geneva, 25 April 1980, lot 2223.

Collection Professor Enrico Bombieri, Christie's, Melbourne, 28 March 1999, lot 1098.

- 3416** 1 s. vermillion, wmk '12' upright, a fine used example with good margins all round, tied to small piece by circular barred obliterator in blue. Most unusual.

- 3417** 6 d. dull slate-grey, wmk. '6', a fine unused example with close to good margins all round, of excellent rich colour, fresh and fine, unused without gum. A very scarce stamp Gi = £ 850.

Provenance: Collection Maurice Burrus, RL, London, 28 Nov 1962, lot 524.

41

400 (€ 360)

41

△

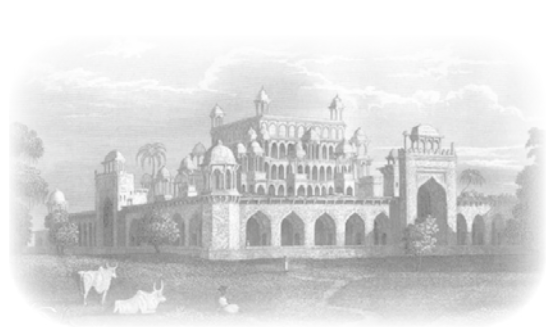
100 (€ 90)

44

(*)

200 (€ 180)

3418



Mausoleum by Secunderabad

- 3418** 6 d. dull slate-grey, wmk. '6', a fine example with large margins all round, used on 1864 cover to Secunderabad, India via Bombay, tied by mute obliterator in black. Circular 'General Post Office / Hobart Town / Crown' datestamp in red below (Feb 20) in red and reverse with Bombay transit cds (March 22) in black with framed '2 annas' due marking on front and Secunderabad arrival cds. Slight file fold at top not affecting the fine appearance of a rare cover.

Note: P&O Second Contract. From Melbourne to Galle per "Madras" Steamer; thence on the "Emeu" to Bombay.

Provenance: Collection Trevor Davis.

44

✉

500 (€ 450)

3419

- 3419** 6 d. grey-violet, wmk. '6', a fine used horizontal strip of three, large margins all round with portions of adjoining stamps at base, cancelled 'Port Arthur 9/..' in manuscript ink. Couple of light tone spots but a scarce strip.

46

150 (€ 135)



3420

Gibbons

Start price	Start price
in CHF	approx. €

- 3420** 6 d. reddish-mauve, wmk. '6', a fine used horizontal strip of three in a fresh shade, portions of adjoining three stamps at base and also at left, cancelled by "75" numeral obliterations of Hobart in black. Corner crease not detracting from the marvellous appearance of a delightful and very rare multiple Gi = £ 540+.

Provenance: Collection Sebastian Earl, RL, Geneva, 25 April 1980, lot 2240.

Collection Professor Enrico Bombieri, Christie's, Melbourne, 28 March 1999, lot 1101.

49

500 (€ 450)

3421

- 3421** 6 d. slate-violet, wmk. '6', a fine used example with good margins all round, used on 1869 cover to Melbourne tied by barred obliterator in black. Reverse with Melbourne arrival cds (June 24). A fine cover.

48

**100** (€ 90)

1863/71, Chalon Heads, unofficial roulettes and perforations



3422



3423

- 3422** 2 d. yellow-green and 4 d. blue, perforated 10 by J. Walch & Sons of Hobart, used on 1866 cover to Coventry tied by mute obliterator handstamp in black. Circular 'General Post Office / Hobart Town / Crown' despatch datestamp in red at left (Aug 22) with Coventry arrival cds on reverse (Oct 21) in black. Imperfections and top flap missing but a very rare issue on cover.
- 3423** 4 d. blue and 6 d. grey-violet / cobalt, perforated 10 by J. Walch & Sons of Hobart, used on 1865 cover to London endorsed 'via Marseilles', each tied by mute obliterator handstamps in black. Circular 'General Post Office / Hobart Town / Crown' datestamp in red below (Nov 23) with London arrival cds at left (Jan 12, 1866). Small part of flap missing but a very fine and rare cover.

60+ 63

**400** (€ 360)

63+ 65

**400** (€ 360)



3424



3426

- 3424** 1 d. carmine, wmk. '1', perf. 12 by J. Walch & Sons of Hobart, a fine unused block of four of excellent colour, some sensible reinforcement and superb large part og. A rare and most attractive multiple Gi = £ 440+.

Gibbons

Start price
in CHF

Start price
approx. €

70

田*

200

(€ 180)



3425

- 3425** 4 d. blue, perforated 12 x 12 by J. Walch & Sons under Contract, a fine example used on 1870 cover tied by 'Hobart Town / Tasmania' duplex (July 22) in black. Reverse with framed 'Pre-Paid' datestamp (July 23) in red. A fresh and fine cover.

73

田

150

(€ 135)

- 3426** 1 s. vermillion, perf. 12, a fine unused example of good colour, well centred, large part og. Scarce so fine. Gi = £ 450.

77

*

120

(€ 110)



3427



Walch business premises in Hobart

- 3427** 1 d. deep carmine, wmk. '1', perforated by J. Walch & Sons of Hobart, an unused block of four, upper pair perforated 12 x 12 x 10 x 12 compound, lower pair perf. 12 all round, of fresh colour with minor double impression and fine, large part og. An extraordinarily rare multiple. Cert BPA (1983) Gi = £ 6'000+.

78

田*

2'500

(€ 2'250)



3428



St. Paul's Church in Oatlands

Gibbons

Start price
in CHF Start price
approx. €

- 3428** 4 d. blue, wmk. '4', imperforate at top and at base x oblique roulette 11½ vertically, a fine example used on 1866 cover (with complete and lengthy contents) to Brighton, tied by "64" numeral obliterator with corresponding OATLANDS datestamp alongside (April 23) in black. A wonderful and extraordinarily rare cover.

91 ✉ **1'000** (€ 900)



3429

- 3429** Provisional 6d. grey-violet, pin-perf./rouletted 5½-9½ at Longford, used example on 1868 cover to South Yarra, Victoria tied by "54" numeral despatch cds of LONGFORD adjacent (Nov 7). Reverse with Launceston datestamp in red, Melbourne cds in blue (Nov 9) and South Yarra arrival. Slight cover crease well away from the rare adhesive, a fine 'confirming' cover.

107 ✉ **750** (€ 675)



3430

- 3430** 1 d. carmine, wmk. '1', serrated perf. 19 in Hobart, a superb used horizontal pair with the serrated roulette applied on all four sides, centred to top and lightly cancelled by 'Tasmania' obliterator in black. A rare and appealing multiple Gi = £ 450+.

118 **180** (€ 160)

1870/71, Surface Printings from plates made by De La Rue



3431

Gibbons

Start price
in CHFStart price
approx. €

- 3431** De La Rue Die Proof for 1 d. value in black on glazed white card, inset into card surround, 92 x 60 mm., and covered with mica screen. Fine and very scarce Proof.
Provenance: Collection A. Ron Butler RDP, Spink, London, 25 July 2007, lot 654.

127 Proof

(*)

200

(€ 180)



3432

- 3432** De La Rue Colour Trial Proof for 2 d. green, imperforate on wmk. Crown CC paper, a superb corner block of eight (4 x 2) with Serial Number "42" from upper left corner of the sheet, fresh and fine, mounted in margin only, stamps unmounted og. Scarce and most attractive.

Provenance: Collection A. Ron Butler RDP, Spink, London, 25 July 2007, lot 673.

129 Proof

田*/**

200

(€ 180)



3433

- 3433** 2 d. blue-green, wmk. '2', perf. 12 by J. Walch & Sons of Hobart, six examples in two strips of three used on 1871 cover to Newcastle On Tyne all cancelled by "10" numeral obliterations with 'Torquay' despatch datestamp (May 17) at lower left. Reverse with diamond 'POST OFFICE / LAUNCESTON / Crown' datestamp in red (May 18) and Newcastle arrival cds (July 17) in black. File folds but a scarce and attractive franking.

Provenance: Collection A. Ron Butler RDP, Spink, London, 25 July 2007, lot 957.

129a

✉

150

(€ 135)



3434



3435

Gibbons

Start price in CHF	Start price approx. €
-----------------------	--------------------------

- 3434** De La Rue Die Proof for 10 d. value in black on glazed white card, struck with BEFORE HARDENING and dated 'Apr. 1, 1870' at top. Small stain at right otherwise superb and rare.
- 3435** De La Rue Colour Trial Proof for 10 d. value in violet, imperforate on wmk. Crown CC paper, a superb corner marginal block of four, fresh and very fine, superb og.

131 Proof

(*)

200

(€ 180)

131 Proof

田*

100

(€ 90)



3436

- 3436** 10 d. black, wmk. '10', perf. 12 by J. Walch & Sons of Hobart, a fine unused horizontal strip of four, marginal from base of sheet with 'Postage' watermark, fresh and fine, superb og., also a block of four 10 d. black all overprinted SPECIMEN in black (Type 2), one pair creased otherwise fresh and fine unused, large part og. A fine pairing.

131+ 131s

*

150

(€ 135)



3437

- 3437** 10 d. black, wmk. '10', a fine unused horizontal strip of six, variety "Imperforate", corner marginal from top left of sheet with Serial Number "44" at top, fourth stamp with Plate Flaw on position 4 on 'T' of TASMANIA, and watermark showing at top 'NEW SOUTH WA(LES)'. Fresh and very fine multiple with large part og. and five stamps unmounted og. A delightful strip of great scarcity Gi = £ 2'100.
Provenance: Tommy Allen.

131a

*/**

750

(€ 675)



3438



3439

		Gibbons		Start price in CHF	Start price approx. €
3438	6 d. deep slate-lilac, wmk. '6', perf. 11½, a fine used block of six (2 x 3), of good colour, all cancelled "97" numeral obliterations of Constitution Hill. A fine and most attractive multiple.	137	田	150	(€ 135)

1871/91, Chalon Heads perforated by the Post Office

3439	1 s. orange-red, wmk. '12', perf. 11½, a fine unused block of six (2 x 3), of good fresh colour, well centred and large part og. A scarce and very fine multiple in choice quality. Cert. RPSL (1991) Gi = £ 1'300+. <i>Provenance: Dale Forster.</i> <i>Professor Enrico Bombierio, Christie's, Melbourne, 28 March, 1999, lot 1109.</i>	141	田*	400	(€ 360)
------	---	-----	----	-----	---------

1871/91, Surface Printings from plates made by De La Rue, watermark 'TAS'



3440

3440	1 d. vermilion, wmk. TAS, perf. 11½, a fine unused block of four in this rare shade, of excellent definitive colour with large part og., matched with a block of the 1 d. rose for comparison, also fresh and fine with large part og. Scarce pairing Gi = £ 1'100+.	144e+ 144	田*	300	(€ 270)
------	--	-----------	----	-----	---------



3441



3442

Gibbons

Start price in CHF	Start price approx. €
200	(€ 180)
200	(€ 180)

3441 De La Rue Die Proof for 2 d. value in black on glazed white card, dated 'July 4 1878' at top in black. Fresh and fine, a scarce Proof.

157 Proof (*)

200 (€ 180)

3442 De La Die Proof for 2 d. value (Plate II) in black on glazed white card, struck with BEFORE HARDENING and dated 'July 5, 1878' at top. Manuscript below "and Recutting" in ink. Scarce and very fine.

157 Proof (*)

200 (€ 180)



3443

3443 De La Rue Die Proof for 8 d. value in black on glazed white card, dated 'July 4 1878' at top in black. Fresh and fine, a scarce Proof.

158 Proof (*)

200 (€ 180)



3444



3445

3444 De La Rue 8 d. dull purple-brown, wmk. TAS, perf. 14, a fine unused block of six (2 x 3), of excellent fresh colour, all overprinted SPECIMEN in black (Type 2). Minor wrinkles, unmounted og. Rare.

158 spec 田**

120 (€ 110)

3445 3 d. red-brown, wmk. TAS, a fine unused horizontal pair, marginal at left, variety "Imperforate", fresh and fine, large part og. Scarce Gi = £ 450.

161a

*

150 (€ 135)



3446

- 3446** 1 d. dull rosine, wmk. TAS, a fine unused corner block of 30 from upper left corner of the sheet, variety "Imperforate", with Plate Number "3" in top margin, crease in margin at top and across the third horizontal row, otherwise fresh and fine, large part or unmounted og. Extremely rare and attractive, almost certainly the largest multiple of this scarce error now extant Gi = £ 5'625.

Gibbons

Start price
in CHF Start price
approx. €

164ca 田** **1'500** (€ 1'350)

1889/99, Later Issues

- 3447** 1891: ½ d. on 1 d. scarlet, locally surcharged 'Halfpenny' in black, a superb unused complete sheet of 120 subjects in two panes from Plate 3, showing Plate varieties "Broken 'P' and 'Y' in Halfpenny" (Row 5, stamp 1), and "Broken 'P' in Halfpenny" (Row 5, stamp 3). Folded down interpanneau margin, a remarkable surviving sheet, fresh and very fine, superb og. or unmounted og. Gi = £ 1'200+.

Provenance: Collection A. Ron Butler RDP.

167+ 167

var

田**/**

250 (€ 225)

- 3448** Provisional 2½ d. on 9 d. deep blue, perf. 11½, surcharged locally in black, a complete sheet of 120 subjects (1st Setting, 1st Printing), fresh and fine unused with Serial Number "50" in top margin and Plate Number "7" at top and at base. Folded between panes down interpanneau margin, probably the sole remaining complete sheet showing the surcharge comprised one setting of 120 subjects, fresh and very fine, large part or unmounted og. Gi = £ 1'400+.

Provenance: Collection A. Ron Butler RDP, Spink, London, 22 Sept 2004, lot 1559.

168b

田**/**

250 (€ 225)

- 3449** Provisional 2½ d. on 9 d. pale blue, perf. 12, surcharged locally in black, Second Setting, Third Printing, a complete pane of 60 subjects from left of sheet with Serial Number "50" at top and Plate Number "7" at base, fresh and fine, large part or unmounted og. Scarce and most attractive Gi = £ 300+.

Provenance: Collection A. Ron Butler RDP, Spink, London, 22 Sept 2004, lot 1559.

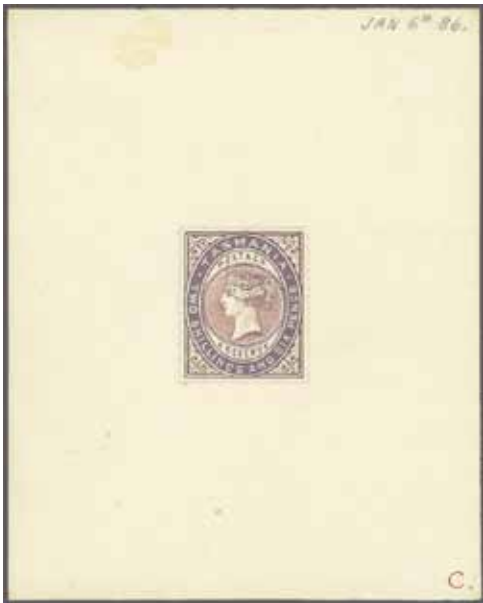
169

田**/**

100 (€ 90)



3451



3450



3452

- 3450** 1886: De La Rue hand-painted Essay for proposed 2 s. 6 d. design, marked 'C' at lower right and dated 'Jan 6th 86' at top, stamp size on thick card, 74 x 92 mm., with the Essay drawn in violet including POSTAGE & REVENUE and the head-plate in this colour, the central oval, TASMANIA and TWO SHILLINGS AND SIX PENCE being picked out in Chinese white with perforations in pencil. See the 'De La Rue Collection' edited by Frank Walton RDP, plate 7906. Rare and beautiful, unique.
- 3451** De La Rue hand-painted Essay for proposed 2 s. 6 d. design, marked 'L' at upper left, stamp size on tracing paper, 39 x 43 mm., with the Essay drawn in violet including the value and head-plate in this colour, the central circle, TASMANIA and POSTAGE & REVENUE being picked out in Chinese white and the perforations in pencil. See the 'De La Rue Collection' edited by Frank Walton RDP, plate 7905. Rare and beautiful, unique.
- 3452** De La Rue hand-painted Essay for proposed 10 s. design, marked 'G' at upper left, stamp size on tracing paper, 43 X 44 mm., with the Essay drawn in green including the head-plate in this colour, the central circle, TASMANIA and TEN SHILLINGS and POSTAGE & REVENUE being picked out in Chinese white with perforations in pencil. See the 'De La Rue Collection' edited by Frank Walton RDP, plate 7905. Rare and beautiful, unique.

Gibbons		Start price in CHF	Start price approx. €
Essay	(*)	1'000	(€ 900)
Essay	(*)	750	(€ 675)
Essay	(*)	750	(€ 675)



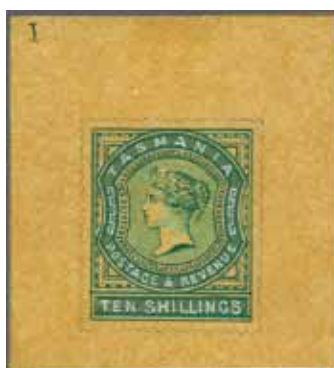
3453

- 3453** De La Rue hand-painted Essays for proposed 10 s. value, marked 'F' and 'M' at lower right and each dated "Jan 6th, 1886" at top; stamp size on thick cards, with the Essays each drawn in green, pale green and Chinese white with the perforations drawn around in pencil. See 'The De La Rue Collection' edited by Frank Walton RDP, plate 7906. Beautiful and unique unadopted Essays for the connoisseur.

(*)	1'000	(€ 900)
-----	-------	---------



3454



3455



3456

3454 De La Rue hand-painted Essay for proposed 10 s. design, marked 'I' at upper left and dated 'Jan 6th 86' at top, larger size on thick card, 73 x 92 mm., with the Essay drawn in green including the head plate, TASMANIA, POSTAGE & REVENUE, TEN SHILLINGS and Greek embellishments in inner frame being picked out in Chinese white and the perforations in pencil. See the 'De La Rue Collection' edited by Frank Walton RDP, plate 7907. Rare and beautiful, unique.

3455 De La Rue hand-painted Essay for proposed 10 s. design, marked 'I' at upper left, larger size on tracing paper, 51 x 55 mm., with the Essay drawn in green, TASMANIA, POSTAGE & REVENUE, TEN SHILLINGS and Greek embellishments in inner frame being picked out in Chinese white and the perforations in pencil. See the 'De La Rue Collection' edited by Frank Walton RDP, plate 7905. Rare and beautiful, unique.

3456 1891: De La Rue hand-painted Essay for the proposed 2½ d. design in carmine-rose on tracing paper, 57 x 73 mm., dated '28 May 91' at top, with TASMANIA and value "2½d." picked out in Chinese white, with De La Rue dummy stamp affixed for the proposed purple colour. Both the design and the colour were accepted. This Essay is illustrated in the 'De La Rue Collection' edited by Frank Walton RDP on plate 7909. A charming and very rare Essay, unique.

Gibbons

Start price
in CHFStart price
approx. €Essay (*) **1'000** (€ 900)Essay (*) **750** (€ 675)217 Essay (*) **750** (€ 675)

3457



3458

3457 De La Rue Master Die Proof in black on glazed white card for the 2½ d. value, dated at top '1 Oct 91' and annotated "B" in manuscript. Fresh and fine, illustrated in the 'De La Rue Collection' edited by Frank Walton RDP on plate 7911. Rare.

3458 De La Rue Die Proof in black on glazed white card for the 2½ d. value, dated at top '25 Sep 91' and struck with BEFORE / HARDENING at right. Fresh and fine.

217 Proof (*) **250** (€ 225)217 Proof (*) **200** (€ 180)



3459



3460



3461

3459 De La Rue hand-painted Essay for the proposed 5 d. design in carmine-rose on tracing paper, 65 x 72 mm., dated '28 May 91' at top, with TASMANIA and value "5d." and border at base picked out in Chinese white, with De La Rue dummy stamp affixed for the proposed dull green colour. The design was accepted but not the colour. This Essay is illustrated in the 'De La Rue Collection' edited by Frank Walton RDP on plate 7909. A charming and very rare Essay, unique.

3460 1892: De La Rue Colour imperforate Colour Trial in close to issued colour, printed in deep blue and chestnut red-brown (issued in pale blue & brown), adhered to part album page. Scarce and attractive.

3461 1892/99: The bicoloured definitive set of ten values to the £ 1 green & yellow, in blocks of four, of excellent freshness, superb unmounted og. A beautiful set in the foremost quality Gibbons = £ 3'000+.

Gibbons

Start price
in CHF Start price
approx. €

218 Essay (*) **750** (€ 675)

218 Proof (*) **200** (€ 180)

216/225 田** **1'000** (€ 900)



3462



3463



3464

3462 1907: 1 s. rose & green, perf. 12½, an unused top marginal block of four, value tablet shifted to left and the block with an additional horizontal row of perforations between stamp and margin, fresh and fine but for one stamp with natural gum fault, large part og.

3463 1896: 9 d. plae blue, wmk. TAS, perf. 12, a fresh unused corner block of four with Plate Number "7" at top, matched with top marginal block of four with each stamp overprinted SPECIMEN in black (Type 2), both fresh and fine with large part og.

3464 1899/1900: Imperforate Colour Trials on unwatermarked wove paper for ½ d. value in deep green, 1 d. deep carmine, 2 d. deep violet, 4 d. deep orange-buff and 5 d. in bright blue, fresh and fine, one or two with gum remnants. Scarce.

Provenance: Robson Lowe, July 28, 1981, lot 1368.

Colour
Trials

(*) **250** (€ 225)

257 var 田* **100** (€ 90)

227+ 227
spec 田* **150** (€ 135)

1899/1900, Pictorial Issues and Sideface



3465



J. R. W. Purves

Gibbons

Start price
in CHF Start price
approx. €

- 3465** **Pictorial Issue** Mount Wellington 1 d. value, Imperforate Colour Trials (5), printed in carmine, yellow green, deep blue, myrtle green and pale blue, fresh and very fine. A rare group.

Provenance: Collection J. R. W. Purves, RL, London, 28 July 1981, lot 1369.

230 Proofs

*

350 (€ 315)

3466

- 3466** The complete set of eight values, all in fine unused blocks of four, fresh and very fine superb large part og. A fine and popular set Gi = £ 600.

229/236 田*/**

200 (€ 180)

3467

- 3467** Hobart 2 d. deep violet, two matching blocks of eight (each 4 x 2), each from the lower left corner of the sheet, Plate 1 and Plate 2, fresh and fine, minor splitting on one, large part or unmounted og., also a corner marginal single from Plate 4. A scarce group Gi = £ 275+.

231 田*/**

100 (€ 90)



General Hospital, Launceston

3468

3468 2½ d. indigo (2) and single 1892 ½ d. orange & mauve used on registered 1904 cover from the General Hospital, Launceston to London, all three values each perforated "T" and tied by both Launceston (Feb 19) and London datestamps (March 26). A fine and scarce usage.

Gibbons

Start price in CHF Start price approx. €

232+ 216



200 (€ 180)



3469

3469 Dilston Falls 6 d. value, engraved working De La Rue Plate Proof, Imperforate in black, a sheet marginal vertical strip of three with centre line '1' in margin at left, affixed to large card, 141 x 175 mm., with five pinholes well away from the Plate Proofs. Some age stains but a very rare and most unusual Proof.

236 Proof

(*)

350 (€ 315)



3470

Gibbons

Start price
in CHF Start price
approx. €

- 3470** 2 d. deep purple, a fine unused vertical pair, compound perf. 11 x 12 at right, fresh and very fine with good centering and colour, large part slightly browned og. Scarce. Cert. RPSV (1989) Gi = £ 700.

245d

*

200 (€ 180)



3471

- 3471** Spring River 3 d. brown, litho from DLR plate, perf. 12½, a fine unused block of twenty four (6 x 4), sheet margins at either side, some splitting but believed to be the largest recorded multiple, fresh and very fine, large part or unmounted og. Scarce Gi = £ 280+.
Provenance: Collection J. R. W. Purves, RL, London, 28 July 1981, lot 1390.

246 田*/**

150 (€ 135)



J. R. W. Purves



3472

- 3472** Russell Falls 4 d. orange-buff, perf. compound 12½ x 11, a superb unused block of four, of good colour and centering, fresh and very fine, large part og. An outstanding and very rare multiple Gi = £ 1'900+.
Provenance: Collection J. R. W. Purves, RL, London, 28 July 1981, lot 1395.

247bb

田*

750 (€ 675)



3473

3473 1 d. rose-red, typo, wmk. Crown over A upright, a fine unused corner pair from lower left of sheet, compound perf. 12 x 11, for the left hand stamp, fresh and fine, large part og. Scarce
Gi = £ 200+.

Gibbons

Start price in CHF Start price approx. €

250d * **100** (€ 90)



3474



J. R. W. Purves



3475

3474 Dilston Falls 6 d. lake, litho, perf. 12½, the famous block of 37 containing the lower six horizontal rows of six and position 24 above, of excellent colour and centering, full margins all round and superb large part or unmounted og. Believed to be the largest known multiple.
Rare Gi = £ 2'960+.
Provenance: Collection J. R. W. Purves, RL, London, 28 July 1981, lot 1396.

248 田*/** **750** (€ 675)

3475 2 d. plum, a fine unused corner marginal block of thirty (6 x 5) being the lower half of the sheet, compound perf. 11 x 12½, fresh and very fine, annotated in pencil in margins, full unmounted og., a very rare large multiple Gi = £ 1'250+.

251c 田** **350** (€ 315)



3476



3477

- 3476** Dilston Falls 6 d. carmine-lake, typo, wmk. Crown over A sideways, a fine unused block of four, compound perf. 11 x 12½, fresh and very fine, superb og. A very scarce block Gi = £ 900+.
- 3477** **Sideface Issue** 9 d. blue, a fine unused example, corner marginal from the lower right corner of the sheet, compound perf. 11 x 12, superb and fresh, large part og. A rare stamp Gi = £ 500.

Gibbons

Start price
in CHF

Start price
approx. €

254b 田*/**

250 (€ 225)

256d *

180 (€ 160)

3478



3480

- 3478** 1 s. rose & green, a fine unused block of four, wmk. inverted, the right hand vertical pair with compound perf. 12½ x 12, fresh and most attractive, superb og. with lower pair unmounted og. Gi = £ 500+.

257c 田*/**

180 (€ 160)

3479

- 3479** 10 s. mauve & brown, a fine unused example, compound perf. 12½ x 12, fresh and very fine, large part og. A superb example of a very elusive stamp Gi = £ 800.
- 3480** **Pictorial Issue** 2 d. bright violet, a fine unused vertical marginal pair, compound perf. 11 x 12½, with 'JBC' monogram, fresh and very fine, unmounted og. Scarce Gi = £ 260+.

258b *

220 (€ 200)

259c **

120 (€ 110)



3481

3481 Spring River 3 d. brown, a fine unused corner marginal block of twenty eight (6 x 4 plus positions 27-30), being most of the top half of the sheet, perf. 12½, largely fresh and fine, some perfs. strengthened by hinges but majority fine large part or unmounted white og., a rare large multiple Gi = £ 1'950+.

Gibbons		Start price in CHF	Start price approx. €
262	田*/**	400	(€ 360)

Postal Fiscals



3482

3482 1877: De La Rue Die Proof for 'Duck-billed Platypus' vignette only in black, dated 'May 18, 1877' at top in black. Rare and fine.

F26 Proof	(*)	200	(€ 180)
-----------	-----	------------	---------



3483



3484

Gibbons

Start price
in CHFStart price
approx. €

- 3483** 1900: 2 s. 6 d. lake, perf. 12, overprinted REVENUE in black with left hand stamp showing variety REVENUE, a fine unused pair, slight age spot on reverse of large part og. Very rare
Gi = £ 1'300.

Provenance: Christie's, Melbourne, 10 May 1991, lot 387.

F32+ F32a

*

400

(€ 360)

- 3484** 2 s. 6 d. lake, perf. 12, overprinted REVENUE in black, variety "Overprint Inverted", fresh and fine example of this rarity with large part og. Exceptional Gi = £ 1'600.

Provenance: Christie's, Melbourne, 10 May 1991, lot 388.

F32b

*

400

(€ 360)



Rodney A. Perry



3485

- 3485** 10 s. salmon, overprinted REVENUE in black, a fine used marginal example, cancelled to order eleven days after issue and four days before Fiscal usages were invalidated for postage with 'Hobart' cds (Nov 26, 1900) in black. A fine and scarce stamp Gi = £ 750.

Provenance: Rod Perry auction, 30 May 1991, lot 468.

F33

200

(€ 180)



3486



3487

- 3486** Duck-billed Platypus 1 d. blue overprinted REVENUE in black, a fine horizontal strip of three, marginal from right of sheet with Serial Number "8" in margin, variety "Imperforate Vertically Between" applying to both the stamps and the margin, fresh and very fine, superb large part og. A rare and particularly lovely strip. Cert. Brandon (1998) Gi = £ 1'100+.

F36b

*

350

(€ 315)

- 3487** Duck-billed Platypus 1 d. blue overprinted REVENUE in black, variety "Revenue Overprint Inverted" on each, fresh and fine, large part og. Scarce Gi = £ 400+.

Provenance: Rod Perry auction, 30 April 1991, lot 469.

F36c

*

150

(€ 135)



Ron Butler



3488

- 3488** Duck-billed Platypus 6 d. mauve overprinted REVENUE in black, a fine unused block of four with Serial Number "8" in sheet margin at left, fresh and fine delicate colour, superb typically cracked unmounted og. Scarce multiple Gi = £ 480+.

Provenance: Collection A. Ron Butler RDP, Spink, London, 22 Sept 2004, lot 1622.

F37

田**

200

(€ 180)

Collections

		Gibbons		Start price in CHF	Start price approx. €
3489	1855/67: Collection on leaves with 1854/55 Plate Proofs (7) for 1 d. in red-brown (5 incl. two pairs), 6 d and 1 s. in black; 1936 Perkins Bacon engine turning sample in green, the 1936 reprint; 1855 2 d. Plate Proof block of nine from top of sheet and 4 d. blue on a cover; 1857/69 2 d. green unused and used single examples and an unused block of four, 4 d. blue (shades) with a range of used examples (28, incl., a strip of three); 1858 1 s. vermilion used (4); 1860 6 d. grey-mauve (shades) with eight fine used examples. Generally fine, an interesting group.	14-49	✉	500	(€ 450)
3490	1864/91: Chalon Head collection of perforated issues with 1864 perf. 10 1 d. red (shades) perf. 10 unused (4), 2 d. green unused and used, 4 d. blue unused (2), 6 d. unused both shades, 1 s. vermilion unused (2), 1865/71 perf. 12 1 d. (shades) unused (two pairs), 4 d. pair unused, 6 d. mauve unused (4), 1 s. vermilion unused (2), perf 12½ 1 d. unused (2), 2 d. green (shades) with five unused examples, 6 d. unused (3), 1 s. unused; 1871/91 with 6 d. unused pair and covers (3). A generally fine group with some very rare stamps noted (51 items).		✉	500	(€ 450)
3491	1870/91: 'Sideface' Collection with cut down Die Proof in black on glazed for 2 d. value, 1870 10 d. black unused (2) and a block of four unused, 1871/78 perf. 11½ with good range unused and used incl. 1 d. strip with serial '41' in margin, 4 d. strip with '43' in margin, 9 d. blue unused block of four, 5 s. mauve unused (signed A. Diena); 1878 1 d. in an unused block of 30, 8 d. purple-brown unused (10) with block of four, 1880/91 with ½ d. and 1 d. in large blocks, 1 d. dull rosine in block of six with 'Wedge' flaw, 4 d. yellow unused (7) and a block of four 4 d. buff, perf. 12 3 d. red-brown imperf. (4), unused (14) and Line Through 'Three and PE' variety, 1891 ½ d. orange unused block of four and imperf. pair, 4 d. block of four etc. A fine and appealing selection.		田	500	(€ 450)
3492	1899/1911: Pictorial Issue, the predominantly unused specialised collection with 1899/1900 original issue unused, 1899 1 d. in Plate Number 1, 2, 3, in corner blocks of six, Plate 4 in corner block of four, Plate 7 and 8 in corner pairs; 1900 4 d. in block of four and left marginal strip of six; 6 d. lake in a "Specimen" vertical pair; 1902 1 d. with watermark varieties and an unused block of 15; 1905 2 d., 4 d. and 6 d. with perf. varieties, 1905/11 ½ d. perf. 11 x 12½ compound perf. block of four, many further multiples from this issue with various wmk. and compound perf. varieties, 1911 2 d. bright violet in a compound perf. corner block of six, the majority very fine to superb throughout; also a few sideface issues including 1906/13 9 d. blue with perf. compound 12½ x 12 unused (cert. RPSL), 1906 10 s. mauve & brown unused etc. A delightful lot (150+ items with 30 blocks of four or larger).	229-262	田*/**	1'000	(€ 900)

Images of our collections you will find on our webpage: www.corinphila.ch