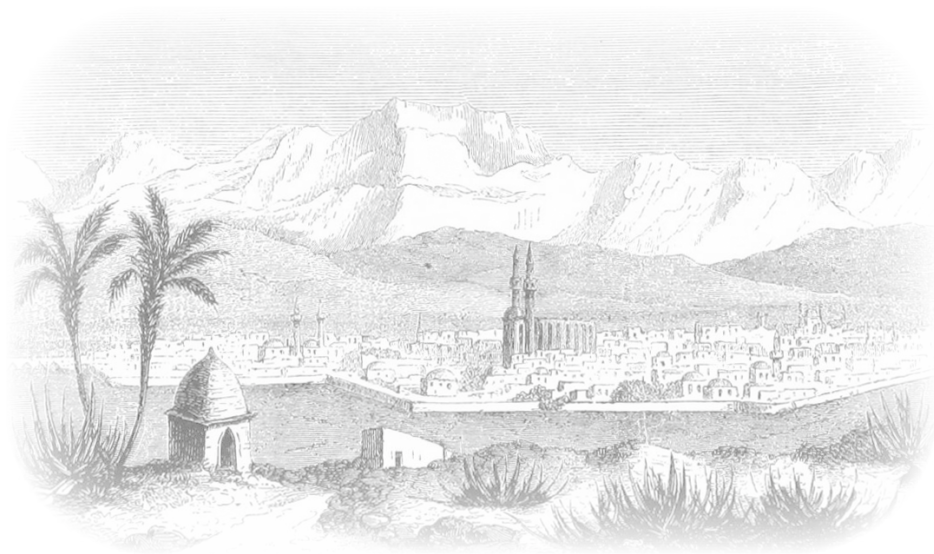


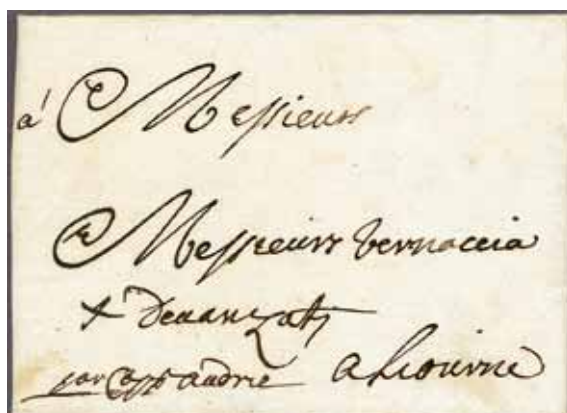
Cyprus

The Specialised Collection



Nicosia, the capitol of Cyprus, ca. 1875

Pre-Philately and Stampless Mail



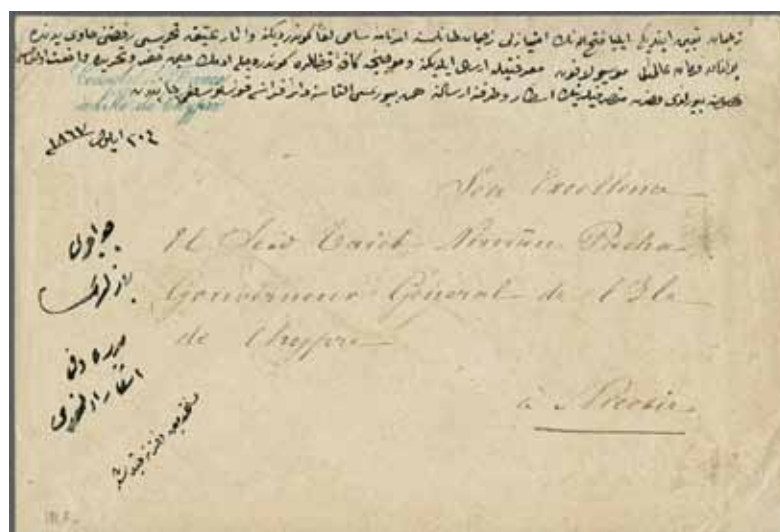
319

Gibbons

Start price
in CHF Start price
approx. €

- 319 Ottoman Rule 1702 (Sept 13): Entire letter from Larnaca to Livorno, ex the Vernaccia archive, endorsed 'par Cap. Andre', the entire opening well for display with clear "Cipro" on flap, a fine and early usage from Cyprus.

✉ 200 (€ 180)



320

- 320 Ottoman Rule 1867: Stampless cover with "Consulat de France / à l'Ile de Chypre" italic two line handstamp in blue, directed to Nimün Pacha, the 'Gouverneur Général de l'île de Chypre' in Nicosia, reverse with circular Eagle handstamp CONSULAT DE FRANCE A LARNACA in blue.

✉ 250 (€ 225)



321

- 321 Ottoman Rule 1871ca: Stampless lettersheet with circular handstamp of the Greek Consul in Cyprus on reverse, sent to Limassol.

✉ 150 (€ 135)

Great Britain used in Cyprus



322

		Gibbons	Start price in CHF	Start price approx. €
322	1858/79: Great Britain 2 d. blue, plate 15, lettered SA, a fine used example cancelled by near complete "974" numeral obliterator of Kyrenia in black. Rare Gi = £ 1'200.	Z10	350	(€ 315)

Austrian P.O.'s



Town of Larnaca



323

323	1867/74: 10 s. blue used on 1878 mourning envelope to Ugnano Della Teverina, Italy tied by LARNACCA DI CIPRO circular datestamp (Feb 21) struck in black (Tchilinghirian fig. 3) with small cartridge framed PIROSCAFI / POSTALI / ITALIANI alongside. Reverse with array of transits with fine SPED. POST: PRESSO LLOYD / SMIRNE cds (Feb 24) in black (Tchilinghirian fig. 12), Brindisi cds, Terni cds (March 5) and arrival. Envelope imperfections with flap tears sealed down, but a very scarce cover.	4	✉	350	(€ 315)
-----	---	---	---	-----	---------

Issued Stamps



324

Gibbons

Start price in CHF Start price approx. €

324 1880 (April 1): Bantam ½ d. rose, plate 12, lettered PQ and plate 15, lettered BQ, unused examples of good colour, fresh and fine, large part og. Gi = £ 345.

1 * 100 (€ 90)



325

325 Bantam ½ d. rose, plate 15, lettered AA-AF / JA-JF, an unused block of sixty (6 x 10), of wondrous fresh colour, fresh and very fine, typical minor gum wrinkles as to be expected, superb large part og. with most unmounted og. A lovely multiple Gi = £ 7'200+.
Provenance: Stanley Gibbons, London, 2-3 Feb 1978.

1 田*/** 2'000 (€ 1'800)



Town of Limassol



326

Gibbons

Start price in CHF Start price approx. €

326 Bantam ½ d. rose, plate 15, lettered HA, the famous used example with variety: "Overprint Double" with additional "CY" of CYPRUS at right, neatly cancelled by part 'Limassol' circular datestamp in black. A magnificent and extremely rare stamp, without doubt the finest known, for the connoisseur of Cyprus philately Gi = £ 45'000.
Note: "The stamps were printed in sheets of 480 (24 x 20), the overprint was made from a plate of 120 subjects therefore there were four applications of the overprint. On one sheet, issued at Limassol, the initial operation was out of alignment and this resulted in one vertical row having the overprint partially double and several vertical rows showing the overprint misplaced to varying degrees" from M.A. Warwick in W.T.F. Castle's 'Cyprus'.

1a

20'000 (€ 18'000)



327



328

		Gibbons		Start price in CHF	Start price approx. €
327	1 d. red, plate 174, lettered ME, an unused example from this scarce plate, minor horizontal bend not affecting appearance, part og. Rare. Signed Thier Gi = £ 1'400.	2	*	300	(€ 270)
328	1 d. red, plate 218, lettered QA, an unused example showing variety: "Overprint Double", fresh and fine for this rarity, large part og. Gi = £ 4'250. Provenance: Collection W.L.E. Miller, RL, Basel VI, 28 Oct 1977, lot 2289.	2aa	*	1'500	(€ 1'350)



329



Queen Victoria

329	1 d. red, plate 208, lettered AG / BG, an unused vertical pair, variety "Upper Stamp Overprint Omitted", fresh and fine in a rosy shade, typical slight gum cracks, large part og. A splendid example of this great rarity - just 12 pairs are possible - a gem of British European philately Gi = £ 27'000. Provenance: Collection W.L.E. Miller, RL, Basel VI, 28 Oct 1977, lot 2281.	2b	*	10'000	(€ 9'000)
-----	--	----	---	--------	-----------



330

Gibbons

Start price
in CHF

Start price
approx. €

- 330** 1 d. red, plate 193, lettered AK-AL / BK-BL, an unused block of four, marginal from top right corner of sheet with part imprint "(ca)reful not to remove the Cement" and full Plate Number. Typical light gum wrinkles, fresh and fine, large part og. A very rare and most attractive multiple Gi = £ 3'200+.

Note: Plate 193 does not exist used. The sheet from this Plate was sold intact to Stanley Gibbons.

Provenance: Collection W.L.E. Miller; RL, Basel VI, 28 Oct 1977, ex lot 2273.

2 田* **1'000** (€ 900)



331



332

- 331** 1 d. red, plate 205, lettered KA-KB / LA-LB, an unused block of four, marginal from top left of sheet with part imprint "the Labels ABOVE the Address and" with part marginal Ornament at top. Typical light gum wrinkles, part og. A most attractive multiple Gi = £ 360+.
- Provenance: DF, Geneva, 28 April 2009, lot 30236.*

2 田* **120** (€ 110)

- 332** 1 d. red, plate 220, lettered QH-QJ / RH-RJ, an unused block of six, fresh and very fine, large part or unmounted og. A rare and most attractive multiple Gi = £ 2'100+.
- Provenance: Spink, London, 8 Nov 2006, lot 1259.*

2 田*/** **500** (€ 450)



333



334

Gibbons

Start price
in CHF Start price
approx. €

- 333** 1 d. red, plate 220, lettered BA, a used example from this scarce plate, cancelled by "942" obliterator of Larnaca Gi = £ 350.

2

100 (€ 90)

- 334** 1 d. red, plate 217, lettered EI-EL, a used horizontal strip of four sharing two complete strikes of the Larnaca "942" obliterator in black. Scarce and most attractive Gi = £ 260+.
Provenance: Collection 'Aphrodite', Spink, London, 24 Feb 2009, lot 45.

2

120 (€ 110)

335

- 335** 2½ d. rosy mauve, plate 14, lettered LA-LF, an unused horizontal strip of six of fine colour, all overprinted SPECIMEN (Type GB9) in black. One slight bend and one or two minor blunted perfs. of no significance, fresh and fine, unmounted og. A rare and attractive multiple.
Provenance: Collection 'Aphrodite', Spink, London, 24 Feb 2009, lot 11.

3 spec

**

350 (€ 315)

Harbour of Famagusta



336

- 336** 2½ d. rosy mauve, plate 14, lettered OG-OJ / PG-PJ, a used block of eight of delightful appearance, neatly cancelled by four strikes of "982" obliterator of Famagusta. Scarce and most attractive multiple Gi = £ 140+.
Provenance: Collection 'Aphrodite', Spink, London, 24 Feb 2009, lot 53.

3

田

200 (€ 180)



337



338

- 337** 4 d. sage-green, plate 16, lettered IA-ID / JA-JD, an unused block of eight (4 x 2) of fresh colour, with 'POSTAGE FOUR' imprint in margin, superb unmounted og. A rare and most attractive multiple *Gi* = £ 1'100+.
- Provenance: Grosvenor, London, 25 May 2004, lot 825.*
- 338** 4 d. sage-green, plate 16, lettered IH, a used example of good colour, cancelled by "975" obliterator of Limassol in black *Gi* = £ 225.

Gibbons		Start price in CHF	Start price approx. €
4	田**	500	(€ 450)
4		75	(€ 70)



339



341



340

- 339** 6 d. grey, plate 16, lettered PA-PB / QA-QB, an unused block of four, marginal from left of sheet, of fine appearance but with two diagonal creases not affecting the appearance, fresh colour and large part og. A rare multiple.
- Provenance: Collection 'Aphrodite', Spink, London, 24 Feb 2009, lot 14.*
- 340** 1 s. green, plate 13, lettered NK, an unused example in a rich shade, slight horizontal crease not affecting the fine appearance, large part og. Signed A. Diena *Gi* = £ 850.
- 341** 1 s. green, plate 13, lettered KK-KL / LK-LL, a used block of four of good colour cancelled by "942" obliterator of Larnaca in black. A very scarce stamp in a multiple, unused or used *Gi* = £ 1'900.

5 spec	田*	500	(€ 450)
6	*	150	(€ 135)
6	田	600	(€ 540)



342



343



347



348

Gibbons

Start price
in CHFStart price
approx. €

- 342 HALF-PENNY Surcharge (18 mm.)** 1881 (Feb-June): ½ d. on 1 d. red, plate 215, lettered NG, an unused example of fine colour, fresh and fine, large part og. A rare plate Gi = £ 800.
Provenance: Collection W.L.E. Miller, RL, Basel VI, 28 Oct 1977, 2321.

7 * **250** (€ 225)

- 343** ½ d. on 1 d. red, plate 218, lettered AH, an unused example showing "Misplaced Surcharge" with lettering and 'One Penny' at base showing, in a rosy shade, fine, large part og. Unusual Gi = £ 500+.

7 * **200** (€ 180)

344



345

- 344** ½ d. on 1 d. red, plate 181, lettered GI-GL / HI-HL, an unused block of eight, of good rosy colour, typical gum wrinkles on large part og. A very scarce and attractive multiple Gi = £ 1'800+.

7 田*/** **500** (€ 450)

- 345** ½ d. on 1 d. red, plate 218, lettered EI-EJ / FI-FJ, an unused block of four, well centred and of rich colour, superb large part og. A magnificent and very rare multiple Gi = £ 2'000+.
Provenance: Collection W.L.E. Miller, RL, Basel VI, 28 Oct 1977, lot 2328.

7 田* **1'000** (€ 900)

346



ex 349

- 346** ½ d. on 1 d. red, plate 205, lettered HH-HL, a used horizontal strip of five, tied to small piece by neat strikes of the "Larnaca / Cyprus" cds (April 23, 1881) in black. A charming and scarce piece Gi = £ 450+.
Provenance: Collection J.C. North, RL, London, 2 May 1956.

7 △ **150** (€ 135)

- 347** ½ d. on 1 d. red, plate 174, lettered BG, a used example showing variety HALF-PENN for HALF-PENNY in surcharge, fresh and very fine. A very scarce stamp Gi = £ 2'750.

7a **850** (€ 765)

- 348** ½ d. on 1 d. red, plate 205, lettered BG-BH, an unused horizontal pair in a deep shade, left hand stamp (BG) showing variety HALF-PENN for HALF-PENNY in surcharge, fresh and very fine, superb large part og. A rare multiple Gi = £ 3'000+.

7a+ 7 * **1'200** (€ 1'080)

- 349** **HALF-PENNY Surcharge (16½ mm.)** 1881 (Feb-June): ½ d. on 1 d. red, plates 201 and 216, unused examples from each plate, plate 201 lettered TI and plate 216 lettered SC, each fresh and fine with large part og. Gi = £ 480.

8 * **150** (€ 135)



Limassol Harbour



350

Gibbons

Start price in CHF Start price approx. €

350 ½ d. on 1 d. red, plate 218, lettered SH, a magnificent used example from this enormously rare Plate, neatly cancelled by fine strike of the "975" obliterator of Limassol. One of the finest, if not the finest of the few recorded genuine examples of this exceedingly rare stamp
Gi = £ 15'000.

8

5'000 (€ 4'500)



351

351 **HALF-PENNY Surcharge (13 mm.)** 1881 (June 1): ½ d. on 1 d. red, plate 215, lettered DC / GC, an unused vertical strip of four of fine centering and fresh colour, showing missing perforation pin at lower left of each stamp below corner letter, large part og. An attractive multiple Gi = £ 200+.

9

**

100 (€ 90)



353



352



ex 354

- 352** ½ d. on 1 d. red, plate 218, lettered KA-KB / LA-LB, an unused block of four of good colour, fresh and fine, large part og., one stamp with old paper hinge. A scarce and attractive multiple *Gi* = £ 360+.

Provenance: RL, London, 26 April 1979, lot 33.

- 353** ½ d. on 1 d. red, plate 205, lettered PH, an unused example with variety: "Surcharge Double", fresh and fine, typical wrinkles on large part og. A scarce stamp *Gi* = £ 800.

- 354** ½ d. on 1 d. red, plate 215, lettered SE, an unused example with variety: "Surcharge Double" but horizontally gum creased, together with two single normal examples from the same Plate lettered RJ and MI, both fresh and fine, large part og. *Gi* = £ 550.

Gibbons

Start price
in CHFStart price
approx. €9 田* **150** (€ 135)9a * **250** (€ 225)9+ 9ab * **150** (€ 135)

355



357



ex 356

- 355** ½ d. on 1 d. red, plate 218, lettered KI, an unused example variety "Surcharge Treble", fresh and very fine, large part og. An extremely rare stamp *Gi* = £ 4'500.

Provenance: Collection W.L.E. Miller, RL, Basel VI, 28 Oct 1977, lot 2345.

- 356** 1881 (June): 30 pa. on 1 d. red, plates 217, lettered JE and 220, lettered CB, unused examples in differing shades, each with large part og. *Gi* = £ 370.

- 357** 30 pa. on 1 d. red, plate 216, lettered FH-FJ / HH-HJ, an unused block of nine, of fresh colour, slight corner crease on one stamp not affecting the appearance, stamp GI showing the "80" for "30" variety clearly, fine large part og. A scarce and attractive multiple *Gi* = £ 1'350.

Provenance: Collection W.L.E. Miller, RL, Basel VI, 28 Oct 1977, lot 2348.

9bc * **1'200** (€ 1'080)10 * **100** (€ 90)10 田* **350** (€ 315)



358



360



ex 359

- 358** 30 pa. on 1 d. red, plate 220, lettered MF, a used example showing variety "Surcharge Double, One Inverted", cancelled by part 'Cyprus' datestamp (1882) in black. A fresh and fine example of a very scarce stamp *Gi* = £ 1'400.
- 359** 30 pa. on 1 d. red, plates 216, 217 and 220, used examples from each plate, respectively cancelled by "D47" obliterator of Polymedia Camp, Limassol; "942" of Larnaca and "975" of Limassol; somewhat heavily cancelled group but scarce *Gi* = £ 470.
- 360** 30 pa. on 1 d. red, plate 201, lettered AI-AJ / BI-BJ, a used block of four, in a rusty pale red shade, cancelled by "Larnaca" squared circle datestamps (May 22, 1882) in black. Scarce and attractive *Gi* = £ 440+.

Gibbons	Start price in CHF	Start price approx. €
10aa	400	(€ 360)
10	120	(€ 110)
10 田	150	(€ 135)



361



362

- 361** 1881: De La Rue Imperforate Proof in issued colour for ½ pi. in pale emerald-green, Die I on watermarked CC paper, minor gum bend on superb large part og. Rare.
Provenance: Collection 'Aphrodite', Spink, London, 14 Feb 2009, lot 125.
- 362** 1881 (July 1): ½ pi. emerald-green, Die I, wmk. Crown CC, an unused block of eight (4 x 2), corner marginal from lower left of sheet showing Plate Number "1" in margin, some peripheral aging at top on reverse, fourth stamp with slight stain spot, otherwise fresh and fine with large part og. with lower four stamps unmounted og. Illustrated in 'Cyprus' by Wilfred Castle. An exceedingly rare multiple *Gi* = £ 1'400+.
Provenance: Collection Lt.-Colonel J.R. Danson, RL, London, 30 June 1971, lot 1056.

11 Proof *	500	(€ 450)
11 田*/**	600	(€ 540)



363



364

- 363** 1 pi. rose, Die I, wmk. Crown CC, an unused block of four of good centering and colour, marginal from base of sheet showing Plate Number "1", smallest of age spots on five perfs. on reverse at top only, otherwise fresh and fine, large part og. with superb lower pair unmounted og. Very rare Gi = £ 1'500+.

Provenance: Collection 'Aphrodite', Spink, London, 14 Feb 2009, lot 133.

- 364** 1 pi. rose, Die I, wmk. Crown CC, a used block of four of good centering and colour, neatly cancelled by "Limassol / Cyprus" squared circle datestamps (Oct 17, 1882) in black. A scarce and attractive multiple Gi = £ 125+.

Gibbons

Start price
in CHF Start price
approx. €

12 田* **850** (€ 765)

12 田 **100** (€ 90)



365

- 365** 1881: De La Rue Imperforate Proof in issued colour for 2 pi. in bright blue, Die I on watermarked CC paper, unused without gum. Rare.

13 Proof (*) **350** (€ 315)



366

- 366** 1881 (July 1): 4 pi. pale olive-green, Die I, wmk. Crown CC, a used block of ten (5 x 2) of good centering and colour, first stamp with one pulled perf. at left, cancelled by "Larnaca / Cyprus" squared circle datestamps (Aug 21, 1882) in black. Minor bend of no significance, an extraordinary and extremely rare multiple Gi = £ 2'750+.

Provenance: Collection 'Aphrodite', Spink, London, 14 Feb 2009, lot 134.

14 田 **750** (€ 675)



367

- 367** 1881: De La Rue Imperforate Proof in issued colour for 6 pi. in olive-grey, Die I on watermarked CC paper, minor corner bend not affecting appearance, large part og. Rare.

Gibbons

Start price
in CHF

Start price
approx. €

15 Proof

*

750

(€ 675)



368



369

- 368** 1882 (May): ½ pi. emerald-green, Die I, wmk. Crown CA, a fine used example cancelled by superb bold strike of "969" obliterator of Nicosia in black. A rare stamp so fine. Signed Thier $G_i = £ 500$.

16

200

(€ 180)

- 369** ½ pi. emerald-green, Die I, wmk. Crown CA, a used example of this scarce stamp, two perforations embellished at right, lightly cancelled by part "Larnaca / Cyprus" squared circle datestamp (May 1882) in black. Fine appearance, a scarce stamp $G_i = £ 500$.

16

100

(€ 90)



370



371

- 370** 1883 (April): ½ pi. dull green, Die I, an unused example from the De La Rue archive, overprinted CANCELLED (Type D4) in black. Fresh and very fine, illustrated in the 'De La Rue Collection' edited by Frank Walton RDP on page 2640. Extremely rare.

16a Proof

(*)

500

(€ 450)

- 371** 1883: De La Rue Imperforate Plate Proof for ½ pi. dull green, Die I, on watermarked Crown CA paper, large margins all round, slight wrinkle, unused without gum. Rare. *Provenance: Collection Chris Cruttwell.*

16a Proof

(*)

250

(€ 225)



ex 372

- 372** 1882/86: Definitive set of seven values, Die I, wmk. Crown CA, complete with additional 4 pi. deep olive-green, of fine appearance but 1 pi. with corner crease, 2 pi. toned perf. on reverse, somewhat dried or browned og. $G_i = £ 1'450$.

16a/22+ 20a

*

250

(€ 225)



373



374



375

- 373** 1883 (April): ½ pi. dull green, Die I, wmk. Crown CA, a used example showing variety "Top Left Triangle Detached", lightly cancelled leaving the variety clear Gi = £ 275.
- 374** 1883 (April): ½ pi. dull green, Die I, wmk. Crown CA, a used example showing variety "Top Left Triangle Detached", lightly cancelled leaving the variety clear, with normal for comparison Gi = £ 275.
- 375** 1882 (June 7): 30 pa. pale mauve, Die I, wmk. Crown CA, an unused example of fine colour, showing variety "Damaged US in CYPRUS", fresh appearance, superb large part og. A rare stamp Gi = £1'300.
Provenance: DF, Geneva, 28 April 2009, lot 30330.

Gibbons

Start price
in CHF Start price
approx. €

16ab

100 (€ 90)

16ab

100 (€ 90)

17b

*

350 (€ 315)

376

- 376** 1876/79: Great Britain 2½ d. rosy-mauve, plate 13, lettered HL, a used example tied to 1879 cover addressed to Algiers endorsed 'via Brindisi', tied by bold "942" numeral obliterator with corresponding "Larnaca / Cyprus" datestamp (May 7) alongside. Reverse with Brindisi transit cds (May 15) and obverse with 'Italie Amb. Lyon-Mars.' cds (May 17) in black. The envelope with flap fault on reverse and all sealed back together but a rare and attractive usage to an unusual destination.

Z18

**500** (€ 450)

377



378

- 377** 1882 (July): 6 pi. olive-grey, Die I, wmk. Crown CA, a used example of deep colour, showing variety "Top Left Triangle Detached" (Plate 2, Right Pane, Row 3, Stamp 3), slight rub on forehead but lightly cancelled leaving the variety clear. Rare Gi = £ 1'200.
Provenance: DF, Geneva, 28 April 2009, lot 30333.
- 378** 1886 (Jan): 12 pi. orange-brown, Die I, wmk. Crown CA, an unused example of good colour, overprinted SPECIMEN (Type D12) in black, unused without gum. Rare.
Provenance: Harmers, London, 8 July 2003, lot 445.

21a

300 (€ 270)

22 spec

(*)

250 (€ 225)



379



381



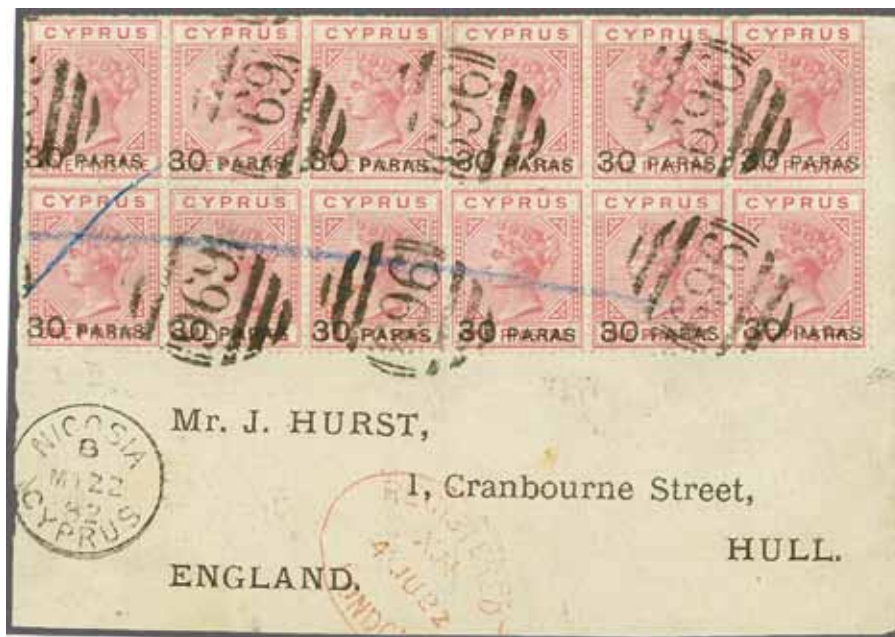
382

Gibbons

Start price	Start price
in CHF	approx. €

- 379 Nicosia Lithographic "½" Surcharges** 1882 (June): ½ on ½ pi. emerald-green, Die I, wmk. Crown CC, an unused block of four of excellent fresh colour, first stamp with variety "Spur on 1", minor gum bends of no importance and not affecting the lovely appearance, large part og. with lower pair unmounted og. A rare and attractive multiple *Gi* = £ 3'600+.
Provenance: Collection W.L.E. Miller, RL, Basel VI, 28 Oct 1977, lot 2377.

23	田*/**	1'200	(€ 1'080)
----	-------	--------------	-----------



380

- 380 Nicosia Lithographic "30 PARAS" Surcharges** 1882 (May 22): 30 pa. on 21 pi. rose, Die I, wmk. Crown CC, a used block of twelve (Types 1-6 / 1-6), all neatly cancelled by "969" numeral obliterations with "Nicosia / Cyprus" circular datestamp (May 22) of first day of issue below. 'Registered / London' datestamp in red alongside (June 4). Some slightly trimmed perfs. and central file fold but a remarkable and scarce multiple showing the complete setting.
- 381 Nicosia Lithographic "½" Surcharges** 1866 (May 22): ½ on ½ pi. emerald-green, Die I, wmk. Crown CA, an unused block of four, of fresh colour and dried large part og. Scarce and attractive multiple *Gi* = £ 680+.
- 382** ½ on ½ pi. emerald-green, Die I, wmk. Crown CA, an unused example showing variety: "Spur on 1" (position 3 in the Setting of six stamps), fresh colour, large part og. A fine and scarce stamp *Gi* = £ 325.

24	(⊗)田	500	(€ 450)
----	------	------------	---------

25	田*	200	(€ 180)
----	----	------------	---------

25c	*	120	(€ 110)
-----	---	------------	---------



Courtyard of the British Consulate at Larnaca



383

		Gibbons		Start price in CHF	Start price approx. €
383	Typographic "½" Surcharge, 6 mm. Spacing 1886 (April): ½ on ½ pi. emerald-green, Die I, wmk. Crown CC, an unused example of wonderful fresh colour and superb large part og. Most probably of Proof status (none are known used), a magnificent example of this rarity in the foremost Exhibition quality <small>Gi = £ 22'000.</small>	26	*	8'000	(€ 7'200)



384

384	½ on ½ pi. emerald-green, Die I, wmk. Crown CA, an unused example of fine colour, minor gum bends on large part g. <small>Gi = £ 300.</small>	27	*	100	(€ 90)
-----	--	----	---	------------	--------



385

Gibbons

Start price	Start price
in CHF	approx. €

- 385** **Typographed "½" Surcharge / 8 mm. Spacing** 1866 (May 27): ½ on ½ pi. emerald-green, wmk. Crown CC, an unused example of good centering and in the slightly pale dull shade normally found on this stamp, fine large part og. An extremely rare stamp in the foremost quality for this provisional issue *Gi* = £ 8'000.

Provenance: Collection W.L.E. Miller, RL, Basel VI, 28 Oct 1977, lot 2378.

28

*

3'000 (€ 2'700)

386



389

- 386** ½ on ½ pi. emerald-green, Die I, wmk. Crown CA, an unused block of four of good colour, first stamp showing variety "Large "2" at Left" (Row 2, Stamp 5, position 11), minor gum bend and lower right stamp with corner crease but the variety very fine, large part og. Rare *Gi* = 5'500+.

Provenance: Collection W.L.E. Miller, RL, Basel VI, 28 Oct 1977, lot 2392.

29+ 29c

田*

1'200 (€ 1'080)

387



388

- 387** ½ on ½ pi. emerald-green, Die I, wmk. Crown CA, a used example showing variety "Large "1" at Left" (Row 4, Stamp 4, position 22) clearly, lightly cancelled by "Larnaca / Cyprus" squared circle datestamp (July 23, 1886) in black. An attractive example of a scarce stamp *Gi* = £ 275.

29a

100 (€ 90)

- 388** ½ on ½ pi. emerald-green, Die I, wmk. Crown CA, a used example showing the variety "Small "1" at Right" (possibly Row 1, Stamp 3), "blunted 1" and damage to the "2" below; of fine appearance, cancelled by "Nikosia / Cyprus" squared circle datestamp (July 27, 1886) in black. Scarce *Gi* = £ 275.

29b

100 (€ 90)

- 389** ½ on ½ pi. emerald-green, Die I, wmk. Crown CA, an unused block of four of good colour, the upper pair each showing the variety "Small "1" at Right" (possibly Row 1, Stamp 2-3, position 2-3), the first being the Gibbons listed variety, the second stamp showing a "blunted 1" and damage to the "2" below; of fine appearance, large part og. Very rare *Gi* = 5'500+.

29b+ 29

田*

1'500 (€ 1'350)



390

Gibbons

Start price
in CHF Start price
approx. €

- 390 1/2 on 1/2 pi. emerald-green, Die I, wmk. Crown CA, an unused example of good colour showing variety "Large "2" at right" (Row 3, Stamp 4, position 16), slight gum thin at top not affecting the frontal appearance, part og. Rare Gi = £ 4'000.

29d

*

1'000 (€ 900)



391

- 391 1/2 on 1/2 pi. emerald-green, Die I, wmk. Crown CA, a used strip of four on 1886 cover to Darlington, all tied by "Nicosia / Cyprus" squared circle datestamps (July 15) in black. First stamp showing slight kiss print of the "1" at left. Reverse with transit cds and Darlington arrival (July 26). The cover has had the stamps lifted to check the watermark. Rare and not unattractive usage.

29

✉

750 (€ 675)



ex 392



393



394

- 392 1892/94: Die II, the definitive set of seven values unused, all overprinted locally with SPECIMEN diagonally reading up (Type CY1), fresh and fine, large part og. Rare.

Provenance: Harmers, London, 8 July 2003, lot 446.

31/37 spec

*

750 (€ 675)

- 393 1886: De La Rue Colour Trial for the Die I 30 paras value, printed in rose with lettering in green on unwatermarked wove paper with large part og. Fine and extremely rare Proof.

Provenance: Collection 'Aphrodite', Spink, London, 14 Feb 2009, lot 192.

32 Proof

*

500 (€ 450)

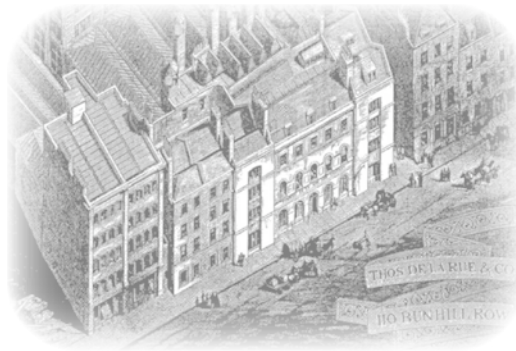
- 394 1892/94: De La Rue Imperforate Plate Proof for 1 pi. value in carmine, Die II on wmk. Crown CA paper, large margins all round with Jubilee line at right, fresh and very fine, unmounted og. Rare.

Provenance: Grosvenor, London, 20 May 2010, lot 1925.

33 Proof

**

500 (€ 450)



Thomas De La Rue Company



395



396

Gibbons

Start price
in CHF Start price
approx. €

- 395** 1893 (July 26): Essay prepared by De La Rue for proposed 5 s. value, based on Colonial standard universal key-plate as used for Gambia etc. with stamp in carmine and country name CYPRUS hand-painted in blue with pencil guide lines still apparent, the 5 s. Duty Plate being entirely hand-painted in Chinese White on pale blue lined background. The Crown Agents turned down the proposal on August 20, 1893. Illustrated in 'The De La Rue Collection' edited by Frank Walton RDP on page 2644 and in Wilfrid Castle's 'Cyprus'. A magnificent and beautiful Essay: unique.

Essay

*

1'200 (€ 1'080)

- 396** 1894/96: Bicoloured De La Rue Imperforate Proof on wove paper for the Die II ½ pi. value, printed in olive-green with lettering in deep mauve, large margins all round, wrinkles and paper adherence on part og. Very rare.

40 Proof

*

500 (€ 450)

ex 397



ex 398

- 397** Bicoloured set of 10 values, Die II, complete to 45 pi. grey-purple & blue, all overprinted SPECIMEN (Type D12) in black, fresh and very fine, large part og. Gi = £ 350.

40/49 spec

*

120 (€ 110)

- 398** Bicoloured issue, the complete unused set of ten values, all in sheet marginal or corner marginal blocks of four, all showing Plate Number "3" in margin, 9 pi. slightly suffused colour otherwise all wonderfully fresh and fine, stamps unmounted og. A marvellous set Gi = £ 1'000+.

40/49 田*/**

350 (€ 315)



399

Gibbons

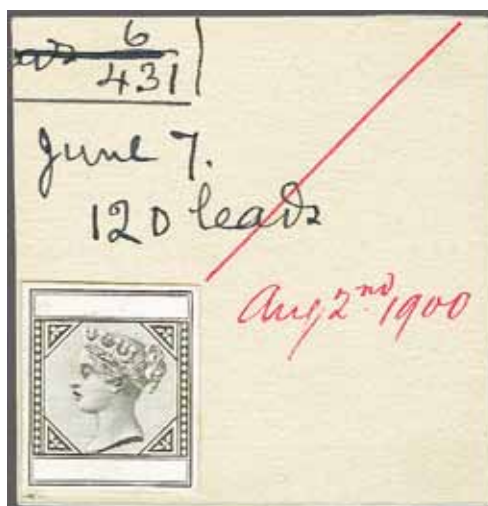
Start price
in CHF Start price
approx. €

- 399** 2 pi. blue & purple, a used example on 1898 imprinted Cyprus Wine Company envelope to Beirut, tied by fine strike of circular POLI-TIS-KHRYSOXHOU / CYPRUS datestamp (March 23 date inverted) in black. Reverse with "Paphos" transit cds, Limassol transit and hooded "Beyrout / British Post Office" arrival (March 28) in black. Corner fault to cover at lower left but a remarkable and extremely rare County Post Office cancellation.
Provenance: Collection 'Aphrodite', Spink, London, 14 Feb 2009, lot 235.

45

**750** (€ 675)

400



401

- 400** 1893 (July 26): Bicoloured De La Rue Imperforate Proof on card paper for the Die II 18 pi. value, printed in greyish with lettering hand-painted in brown ink, large margins all round, an extremely rare working Proof. The Crown Agents accepted the proposal on August 20, 1893. Illustrated in 'The De La Rue Collection' edited by Frank Walton RDP on page 2644. A magnificent and rare Essay: unique.
- 401** 1900: Bicoloured issue, De La Rue Master Die Proof without country and Duty plate, printed in black on glazed white card, a stamp size example on card ex the De La Rue day-book dated "Aug 2nd 1900" in manuscript red ink with printing instructions (dated June 7) above. Very rare and most appealing.
Provenance: DF, Geneva, 28 April 2009, lot 30357.

48 Proof

(*)

500 (€ 450)

50 Proof

(*)

750 (€ 675)



402

402 1902: De La Rue Master Die Proof without Country Name and Value, printed in black on glazed white card, dated "30 SEP 02" in blue, endorsed BEFORE / HARDENING in black. Minor rubs at top left otherwise fresh and fine, a rare Proof.

Gibbons			Start price in CHF	Start price approx. €
50 Proof	(*)	500	(€ 450)	



403

403 ½ pi. green & carmine, wmk. Crown CA, a Plate Proof in issued colour, imperforate with margin at right, fresh and very fine appearance, slight mark on gum, unmounted og. Rare: only the ½ pi. and 30 pa. are known imperforate.
Provenance: Collection 'Aphrodite', Spink, London, 24 Feb 2009, lot 240.

50 Proof	**	200	(€ 180)	
----------	----	-----	---------	--



ex 404



ex 405

404 1902/04: ½ pi. green & carmine, wmk. Crown CA, an unused block of four, variety: "Watermark Inverted", fresh and very fine, superb unmounted og., together with a single used example with the same variety. Rare $G_i = £ 770+$.

405 ½ pi. green & carmine (2), 30 pa. violet & green (2), 1pi. carmine & blue and 2 pi. blue & purple, all in used blocks of four with 'VR' or 'ER' Rural Service cancellations in black of 'Marathio Vouno', Pissouri or Tavros. An attractive and scarce group.

50w	田**	200	(€ 180)	
50/53	田	100	(€ 90)	



406

Gibbons

Start price
in CHFStart price
approx. €

- 406** 1902: 30 pa. violet & green, wmk. Crown CA, a Plate Proof in issued colour, an imperforate horizontal pair with sheet margin at left, fresh and very fine appearance, some red ink splashes on unmounted og. Rare: only the ½ pi. and 30 pa. are known imperforate.
Provenance: Collection 'Aphrodite', Spink, London, 14 Feb 2009, lot 241.

51 Proof

**

300

(€ 270)



ex 408

ex 409

ex 410

407

- 407** 1902/04: 18 pi. black & brown, wmk. Crown CA, a used horizontal pair, marginal from base of sheet and showing Plate Number '1', neatly cancelled by "Larnaca" squared circle (May 27, 1904) in black. Scarce and fine, used in first month of issue. Gi = £ 340.
- 408** Definitive set of ten values, wmk. Crown CA, largely fresh and fine with four values, including the 45 pi. sheet marginal, large part or unmounted og. Gi = £ 600.
- 409** 1904/10: Definitive set of twelve values, wmk. Multiple Crown CA, with additional shades of the 10 pa. and 30 pa., fresh and fine, superb large part og. Gi = £ 400+.
- 410** Watermark Multiple Crown CA, used examples all with variety "Broken Top Left Triangle" flaw, (Left pane, Row 7, Stamp 5), with 5 pa., 10 pa. in pair used at Troodos, ½ pi., 30 pa., 1 pi., 2 pi., 4 pi., 9 pi and 18 pi. values all showing the variety, a few with small imperfections but a scarce group Gi = £ 1'600+.

58

100

(€ 90)

50/59

*/**

200

(€ 180)

60/71+ 61b+

*

150

(€ 135)

63a

60a+ 61c+

62a+ 63b+

64a+ 65a+

66a+ 68b+ 70b

△

250

(€ 225)



ex 411

- 411** Short set from ½ pi. green & carmine to 45 pi. dull purple & ultramarine (10 values), all in Plate Number '1' corner blocks of four from corners of the sheet, with two shades of the 30 para (1904 and 1910 printings), some minor gum bends of no significance, all unmounted og. A rare assembly with just the two cheaper values missing Gi = £ 1'400+.

62/71

田**

400

(€ 360)



412

Gibbons

Start price
in CHF Start price
approx. €

- 412** 1912: De La Rue Master Die Proof, without Country Name and Value, printed in black on glazed white card, undated. Superb and very rare.

Provenance: Collection W.L.E. Miller, RL, basel VI, 28 Oct 1977, lot 2433.

Collection Chris Cruttwell, Argyll Etkin, London.

DF, Geneva, 28 May 2009, lot 30374.

74 Proof

*

500 (€ 450)



ex 413



414



415



416

- 413** 1912/15: ½ pi., 30 pa., 2 pi., 4 pi., and 6 pi. values, wmk. Multiple Crown CA, each overprinted by SPECIMEN handstamp in violet (Type CY1), somewhat heavily mounted but extremely rare, part og.

Provenance: DF, Geneva, 28 April 2009, lot 30379.

75+ 76+ 78+
79+ 80 spec

*

250 (€ 225)

- 414** 10 pa. orange & green, wmk. Multiple Crown CA, a used example with variety: "Watermark Sideways", fresh and fine, an extremely rare stamp with less than a dozen examples recorded

Gi = £ 3'500.

Provenance: Stanley Gibbons, London, 24 June 1998, lot 0026.

74a

1'000 (€ 900)

- 415** 1 pi. carmine & blue, wmk. Multiple Crown CA, an unused example from the 1915 printing, of fine colour and showing the variety: "Broken Bottom Left Triangle", large part og. *Gi = £ 325.*

77ba

*

120 (€ 110)

- 416** 12 pi. chestnut & black, wmk. Multiple Crown CA, an unused example (Row 10, stamp 6), of fine colour and showing the variety: "Broken Bottom Left Triangle", superb large part og. A scarce stamp *Gi = £ 450.*

82a

*

150 (€ 135)



417



418

- 417** 45 pi. dull purple & ultramarine, wmk. Multiple Crown CA, an unused example from lower right corner of the sheet, of fine colour and showing the variety: "Broken Bottom Left Triangle", minor bend in margin only, large part og. A rare stamp *Gi* = £ 1'800.

- 418** 45 pi. dull purple & ultramarine, wmk. Multiple Crown CA, an unused horizontal strip of three, marginal from lower right corner of the sheet, second stamp with Plate Number "1" below and third stamp showing "Broken Bottom Left Triangle" variety, slight bend between stamps otherwise superb, unmounted og. A very rare multiple *Gi* = £ 2'000+.

Gibbons

Start price
in CHFStart price
approx. €

84a

*

500

(€ 450)

84a+ 84

**

750

(€ 675)



419

- 419** 1921/23: 10 pa. orange & green, wmk. Multiple Script CA, an unused example with variety: "Watermark Inverted", fresh and very fine, superb large part og. A rarity *Gi* = £ 3'250.

85w

*

1'200

(€ 1'080)



ex 420



ex 421



422

- 420** 1912/15: Definitive set of eleven values, wmk. Multiple Crown CA, an unused set with additional shades of 10 pa. ½ pi., 1 pi. and the scarce 9 pi., together with 10 pa., ½ pi., 1 pi., 2 pi. and 6 pi. values all showing "Broken Bottom Left Triangle" flaw unused with a further ½ pi. used example also exhibiting the same flaw. A few imperfections but a scarce assembly *Gi* = £ 1'600+.

74/84+ 74b+

75a+ 77a+

78a+ 80a

*

350

(€ 315)

- 421** Definitive issue, wmk. Multiple Crown CA, the set of ten (excl. the 45 pi.) all in Plate Number "1" unused blocks of four from 10 pa. to 4 pi., 6 pi. in a separated block of four, scarce 9 pi. in a marginal Plate Number strip of three and a marginal block of four, 12 pi. in a Plate Number strip of three, 18 pi. in a Plate number pair, all with large part or unmounted og. Generally fine, a scarce group *Gi* = £ 640+.

74/83

田*/**

150

(€ 135)

- 422** 1921/23: 30 pa. violet & green, an unused example, marginal from top of sheet, showing variety: "Watermark Inverted", slight mark on face possibly from cancellation, but of fine appearance and the variety clearly showing in margin, without gum. A rare stamp mint or used *Gi* = £ 3'000.

Provenance: DF, Geneva, 28 April 2009, lot 30386.

87w

(*)

750

(€ 675)



423



ex 424

- 423** 2 pi. carmine & blue, wmk. Multiple Script CA, an unused example overprinted SPECIMEN in black with 'abnormal' Type D9 rather than the normal UPU supply overprinted Type D12, fresh and fine, unused without gum. Illustrated in Marcus Samuel 'Specimen Stamps of the Crown Colonies' on plate 14. Rare.

- 424** Definitive set of fifteen, wmk. Multiple Script CA, fresh and fine with additional (and scarce) 9 pi. yellow-brown & carmine and 30 pa. green and 1 pi. carmine & blue each showing "Broken Bottom Left Triangle" varieties, large part or unmounted og. A scarce assembly Gi = £ 1'245.

Gibbons

Start price
in CHFStart price
approx. €

93 spec

(*)

200

(€ 180)

85/99+ 87a+
89a+ 97a

*/**

350

(€ 315)



ex 425

- 425** Definitive issue, wmk. Multiple Script CA, the set of fifteen values all in multiples, all with Plate "1" in margin excl. 18 pi., with 10 pa. in both colours in blocks of four from top right of sheet with requisition numbers, 30 pa. violet & green in a block of four and of six, the former showing "Broken Bottom Left Triangle", 30 pa. green block of four and strip of three, 1 pi. carmine & blue block of four with requisition number '004' at top, 1 pi. violet & red in pair and strip of three, 1½ pi. in strip of three and block of four, 2 pi. (2) each from top right of sheet, 2¾ pi. in a strip of three and a block of four, 4 pi. in strip of three and block of four, 6 pi. with pair and block of four, 9 pi. in both shades each in lower right corner blocks of four showing "Broken Bottom Left Triangle" variety, 18 pi. in vertical pair and the rare 45 pi. in a strip of three showing "Broken Bottom Left Triangle" variety on third stamp; fresh and fine, a scarce and most appealing set Gi = £ 6'000+.

85/99+ 87a+
97b+ 99a

田*/**

1'500

(€ 1'350)



426



427

- 426** 45 pi. dull purple & ultramarine, wmk. Multiple Script CA, a superb used example of good colour cancelled by "Lefkara" squared circle datestamp (April 3, 1934) in black. A very scarce stamp fine used Gi = £ 275.

- 427** 1923: De La Rue Die Proof for the £ 1 value in black, stamp size imperforate example, printed in black on thick card paper. Extremely rare and very fine.
Provenance: Collection Chris Cruttwell.

99

田

100

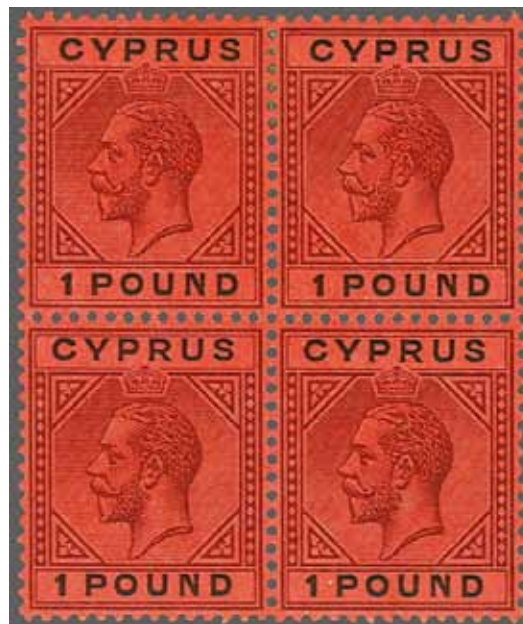
(€ 90)

101 Proof

(*)

500

(€ 450)



428

- 428 £ 1 purple & black on red, wmk. Multiple Crown CA, an unused block of four of vibrant fresh colour, perfectly centred, large part og. with one stamp unmounted og. Just 1'682 stamps were issued and all remainders were burnt (ref. W. Castle). A magnificent and extremely rare multiple Gi = £ 5'600+.

Gibbons

Start price
in CHF Start price
approx. €

101 田*/** **2'000** (€ 1'800)



"Broken Bottom
Left Triangle"



429

- 429 £ 1 purple & black on red, a used example marginal from lower right corner of the sheet showing variety: "Broken Bottom Left Triangle", neatly tied to small piece by partial "Larnaca" circular datestamp (May, 1924) in black. Superb and extremely rare Gi = £ 14'000.
Provenance: Harmers, London, 26 Aug 1999, lot 1118.

101a △ **5'000** (€ 4'500)



430

430 10 s. green & red on yellow and £ 1 purple & black on red, the set of two values, each of fine fresh colour and large part og. The £ 1 signed A. Diena and L. Miro Gi = £ 1'800.

Gibbons			Start price in CHF	Start price approx. €
101+ 102	*		600	(€ 540)



431

431 1924: £ 1 purple & black on red, wmk. Multiple Crown CA, an unused block of four from upper right of sheet with Plate Number "1" and requisition number 100 in margin, of vibrant fresh colour, perfectly centred, stamps unmounted og. A lovely multiple Gi = £ 1'200+.
Provenance: Renato Mondolfo (1986).

102	田**	400	(€ 360)
-----	-----	-----	---------



432

432 De La Rue Master Die Proof without Country name and value, printed in black on glazed white card, dated in pencil manuscript "18/3/24", endorsed BEFORE / HARDENING in black. A rare and splendid Proof.
Provenanace: DF, Geneva, 28 April 2009, lot 30390.

103 Proof	(*)	500	(€ 450)
-----------	-----	-----	---------



433



434

Gibbons

Start price	Start price
in CHF	approx. €

- 433 1924/28: Colour Trial for the 1 piastre value on wmk. Multiple Script CA paper, perf. 14, printed in chestnut brown and grey, fresh and very fine, slightest of wrinkles on superb large part og. Rare.

Provenance: Collection Chris Cruttwell.

- 434 1928: £ 5 black on yellow, an unused example of excellent centering and colour, fresh and very fine, superb large part og. A rare stamp in wonderful quality Gi = 3750.

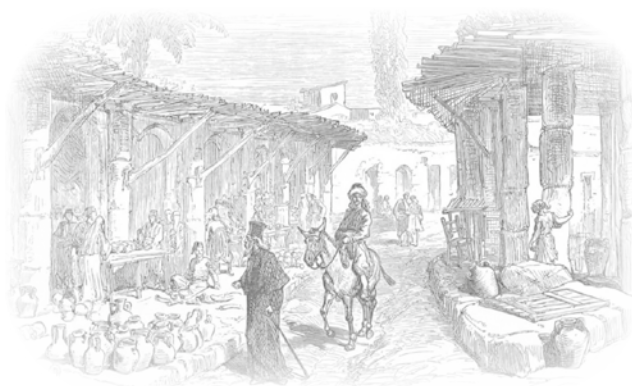
106 Trial

*

300 (€ 270)

117a

*

1'500 (€ 1'350)

Bazaar Larnaca



435

- 435 £ 5 black on yellow, a sheet marginal example used on 1928 Registered & Insured cover to Huddersfield tied by "Larnaca / Cyprus" circular datestamp (March 24) in black. Registration label at lower left and Insured label in red at left. Reverse with five removed red wax seals and sender's notation. A wonderful cover of great rarity.

117a

✉

7'500 (€ 6'750)



ex 436

Gibbons

Start price	Start price
in CHF	approx. €

- 436** 1924/28: Definitive set of 21 values from ¼ pi. grey & chestnut to £ 1 purple & black on red, all fresh and fine unused, overprinted SPECIMEN in black (in red on the ¾ pi. value), large part og. A scarce set Gi = £ 1'100.

102/122
spec

*

350 (€ 315)

ex 437

- 437** 1928 (Feb 1): 50th Anniversary of British Rule, the set of ten values to £ 1 in unused horizontal pairs, the £ 1 value with requisition number 116, fresh and very fine, large part og. One of the most lovely sets in British Colonial philately Gi = £ 600.

123/132

*

240 (€ 215)

ex 438

- 438** 50th Anniversary of British Rule, the set of ten values to £ 1 unused, fresh and very fine, large part og. One of the most lovely sets in British Colonial philately Gi = £ 300.

123/132

*

150 (€ 135)

ex 439

- 439** 1934 (Dec 1): Pictorial definitive set of 11 values, all perforated SPECIMEN diagonally, fresh and very fine, superb large part og. Scarce Gi = £ 650.

133/143
spec

*

200 (€ 180)



View of the excavations in Salamis



440



441

		Gibbons	Start price in CHF	Start price approx. €
440	Vouni Palace ¼ pi. ultramarine & orange-brown, a used vertical pair showing variety: "Imperforate Between Horizontally", lightly cancelled by "Limassol" datestamp (Jan 15, 1935) in black. Fresh and very fine. Extremely rare, this being the sole recorded used pair Gi = £ 32'000. Note: 6 pairs are recorded, five unused and one used (W.T.F. Castle).	133a	8'500	(€ 7'650)
441	Salamis ½ pi. green, an unused vertical pair showing variety: "Imperforate Between Horizontally", fresh and very fine, hinged on upper stamp only, large part og. Extremely rare - just 5 mint pairs are recorded Gi = £ 18'000. Note: 6 pairs are recorded, five unused and one used (W.T.F. Castle).	134a	* 7'500	(€ 6'750)



King George V



442

		Gibbons	Start price in CHF	Start price approx. €
442	Roman Theatre at Soli, 1 pi. black & red-brown, an unused block of four, marginal from left of sheet, variety: "Imperforate Between Horizontally", fresh and very fine, superb large part og. with left hand pair unmounted og. Extremely rare, this being the sole block of four recorded Gi = £ 50'000.	136a 田*/**	15'000	(€ 13'500)
443	1938/51: Pictorial definitive set of 19 values to £ 1, an unused complete set perforated SPECIMEN. Scarce and very fine, large part og. Gi = £ 800.	151/163 spec *	250	(€ 225)