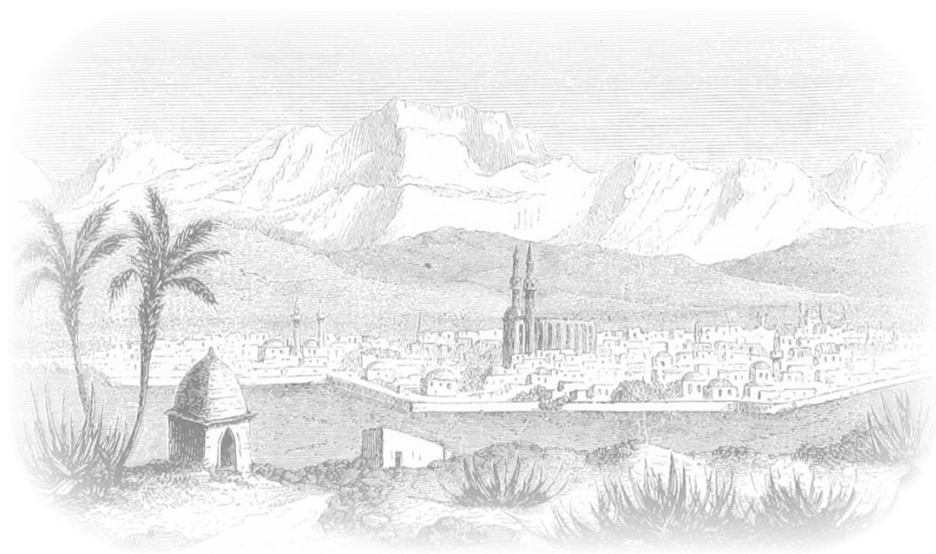


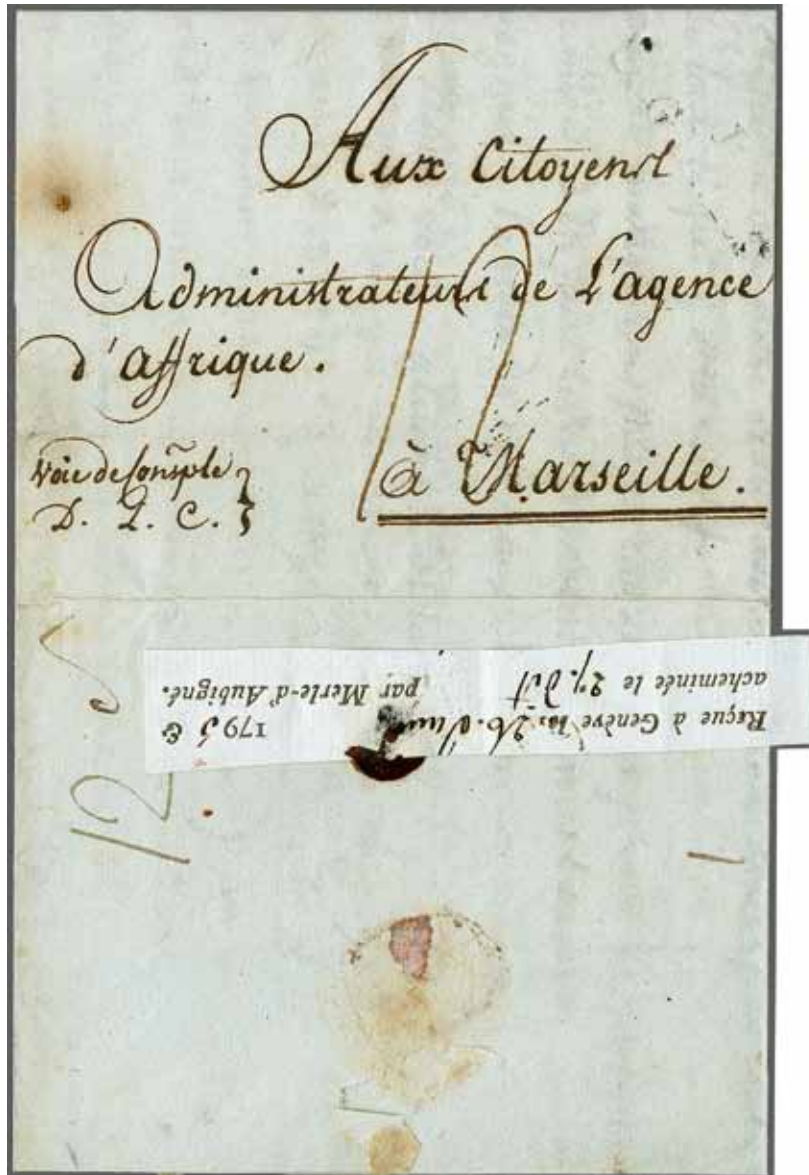
Cyprus

The Specialised Collection



Nicosia, the capitol of Cyprus, ca. 1875

Pre-Philately



1864

Gibbons

Start price in CHF Start price approx. €

- 1864** 1795: Entire letter written on 26. ventose, an 3 (March 16, 1795) in Cyprus by a grain dealer, endorsed "voie de Consple" and directed to the 'Administrateur de l'agence d'Afrique' in Marseille, reverse with etiquette of a forwarding agent (papillon d'achemenement) in Geneva "Reçue à Genève le 26 Juin 1795 & acheminée le 27 dito par Merle-d'Aubigné", on front departure handstamp "I St. GERMAIN" (St. Germain-de-Joux, dept. Ain), taxed upon arrival at '12' décimes. A rare and unusual routing, forwarded in Geneva before it became part of France in 1798.



250 (€ 225)

Issued Stamps



1865



1866

- 1865** 1880 (April 1): Bantam ½ d. rose, plate 19, lettered FW-FX / GW-GX, an unused block of four, imperforate between stamps and right margin, with part imprint "£1. Per Sheet", overprinted SPECIMEN (Type GB9) in black. Typical light gum wrinkles and age spot, fresh and fine, large part og. A rare and most attractive multiple. Cert. BPA (2019).
Provenance: Collection Dr. Conrad Latto, 1993.
Collection 'Aphrodite', Spink, London, 24 Feb 2009, lot 2.
- 1866** Bantam ½ d. rose, plate 19, lettered CJ, a superb lightly used example of good colour, neatly cancelled by part obliterator in black. Exceptional Gi = £ 700.

| Gibbons | | Start price in CHF | Start price approx. € |
|---------|----|-----------------------|--------------------------|
| 1 spec | 田* | 500 | (€ 450) |
| 1 | | 250 | (€ 225) |



1867

- 1867** 1 d. red, plate 218, lettered PA, an unused example, marginal from left of sheet, showing variety: "Overprint Double", fresh and very fine for this rarity, large part og. Cert. BPA (2019) Gi = £ 4'250.

| | | | |
|-----|---|-------|-----------|
| 2aa | * | 1'750 | (€ 1'575) |
|-----|---|-------|-----------|



1868

- 1868** 1 d. red, plate 196, lettered GG, an unused example of fresh colour, large part og. A scarce plate Gi = £ 700.
Note: Plate 196 does not exist used. The sheet from this Plate was sold intact to Stanley Gibbons.
Provenance: Collection W.L.E. Miller, RL, Basel VI, 28 Oct 1977, lot 2277.

| | | | |
|---|---|-----|---------|
| 2 | * | 220 | (€ 200) |
|---|---|-----|---------|



1869

| | | Gibbons | | Start price in CHF | Start price approx. € |
|------|---|---------|---|-----------------------|--------------------------|
| 1869 | 1 d. red, plate 208, lettered KC / LC, an unused vertical pair, variety "Upper Stamp Overpint Double" with a greater distance between the two overprints than found on plate 218 with this variety, fresh and fine in a rosy shade, typical slight gum cracks, large part og. Rare and most attractive, cert. BPA (2019) Gi = £ 27'000. Provenance: Collection J.C. North, RL, London, 2 May 1956. Collection W.L.E. Miller, RL, Basel VI, 28 Oct 1977, lot 2281. | | | | |
| | | 2a | * | 10'000 | (€ 9'000) |



1870

Gibbons

Start price
in CHF

Start price
approx. €

- 1870** 1 d. red, plate 216, lettered IJ-IL, an unused horizontal strip of three, marginal from right of sheet with part imprint "the Labels ABOVE the", overprinted SPECIMEN (Type GB9) in black. Typical light gum wrinkles, fresh and fine, large part og. A scarce and most attractive multiple.

Provenance: Collection 'Aphrodite', Spink, London, 24 Feb 2009, lot 10.

2 spec * **200** (€ 180)



1872



1871



1873

- 1871** 1 d. red, plate 196, lettered AK-AL / BK-BL, an unused block of four, marginal from top right corner of sheet with part imprint "(ca)reful not to remove the Cement" and full Plate Number. Typical light gum wrinkles, fresh and fine, large part og. A very rare and most attractive multiple. Gi = £ 2'800+.

Note: Plate 196 does not exist used. The sheet from this Plate was sold intact to Stanley Gibbons.

Provenance: Collection W.L.E. Miller, RL, Basel VI, 28 Oct 1977, ex lot 2273.

2 田* **850** (€ 765)

- 1872** 1 d. red, plate 220, lettered DE-DF / EE-EF, an unused block of four, in a fine rosy shade, fresh and very fine, large part og with lower pair unmounted og. A rare and most attractive multiple. Signed Brun Gi = £ 1'400+.

2 田*/** **350** (€ 315)

- 1873** 1 d. red, plate 208, lettered CB-CC / DB-DC, an unused block of four, the vertical pair at right showing thicker "C" in CYPRUS, fresh and very fine, large part og. A scarce multiple. Gi = £ 520+.

Provenance: Collection 'Aphrodite', Spink, London, 24 Feb 2009, lot 41.

2 田* **200** (€ 180)

We accept consignments of suitable rarities and collections or entire estates for our forthcoming auctions at any time. Please do not hesitate to contact our Philatelic Experts to discuss further details for consignments. Absolute discretion is guaranteed.



1874



1875



1876

1874 1 d. red, pl. 217, lettered SC-SG/TC-TG, an unused block of ten with full marginal imprint below "£1 per sheet. Place the labels ABOVE the address and towards the RIGHT", of one colour and superb unmounted og. Gi = £ 240+.

1875 1 d. red, plate 220, lettered SH-SL / TH-TL, an unused block of ten (5 x 2), marginal from lower right corner of sheet with part imprint "(HA)ND SIDE of the Letter. In Wetting the Back be careful not to remove the Cement" and full Plate Number with requisition number 262 below. Typical light gum wrinkles, fresh and fine, large part or unmounted og. A very rare and most attractive multiple Gi = £ 3'500+.

1876 1 d. red, plate 215, lettered AA-AD / DA-DD, an unused block of sixteen (4 x 4) marginal from top left corner of sheet with part imprint "PRICE 1d. Per Label. 1/- Per Row of 12. £1 Per Sheet. Place the L(abel)" and full Plate Number with '257' requisition number above. Typical light gum wrinkles, fresh and fine but for one rounded perf., large part og. with most unmounted og. A very rare and most attractive multiple Gi = £ 360+.

1877 1 d. red, plates 181, 201 (single and pair), 215, 216, 217, 218 (single and a block of eight) and 220; all unused and of generally fine appearance, the block of eight with minor splitting but a scarce group with large part og. Gi = £ 1'250+.

(Photo = www)

Gibbons

Start price
in CHFStart price
approx. €

2 田** 120 (€ 110)

2 田*/** 1'000 (€ 900)

2 田*/** 150 (€ 135)

2 田* 250 (€ 225)



1878



1879



1880

1878 1 d. red, plate 174, lettered HF, a used example from this scarce plate, cancelled by part obliterator in black Gi = £ 1'400.

Provenance: Collection 'Aphrodite', Spink, London, 24 Feb 2009, lot 34.

1879 1 d. red, plate 208, lettered OI, a used example of good colour, cancelled by fine strike of scarce "D47" obliterator of Polymedia Camp, Limassol.

1880 1 d. red, plate 218, lettered PK-PL, a used horizontal pair sharing a complete strike of the Larnaca "942" obliterator in black. Scarce so fine Gi = £ 140.

2 300 (€ 270)

2 75 (€ 70)

2 75 (€ 70)



The town of Larnaca



1881

Gibbons

Start price in CHF Start price approx. €

- 1881** 3 d. rosy-mauve, plate 14, lettered GL, a used example on 1880 cover to Florence, Italy tied by bold "942" obliterator with crisp strike of LARNACA / CYPRUS cds alongside (July 20, 1880) in black. Reverse with Brindisi transit cds (July 28) and Firenze arrival (July 29). Minor imperfections but a scarce stamp on letter.

3 ✉ **200** (€ 180)



1882



1883



1884

- 1882** 4 d. sage-green, plate 16, lettered BI, an unused example of excellent centering and colour, overprinted SPECIMEN (Type GB9) in black, slightest of ink splashes from overprint, tiny thin, superb large part og. A rare stamp: just one sheet was overprinted thus.
Provenance: Collection 'Aphrodite', Spink, London, 24 Feb 2009, lot 13.
- 1883** 4 d. sage-green, plate 16, lettered CC-CE, an unused horizontal strip of three, of lovely fresh colour, third stamp with dry print in the CYPRUS overprint leaving the "Y" partially printed, third stamp with minor gum bend, large part or unmounted og. Scarce Gi = £ 420+.
- 1884** 6 d. grey, plate 16, lettered QD, an unused example of fine colour, superb large part og. A rare stamp so fine Gi = £ 500.

4 spec * **250** (€ 225)

4 */** **150** (€ 135)

5 * **200** (€ 180)



1885



1886

Gibbons

Start price
in CHF Start price
approx. €

- 1885** 6 d. grey, plate 16, lettered PA-PD / TA-TD, an unused complete pane of twenty, with full imprints at top "PRICE / 6 Pence per Label / 2 Shillings per Row of 4 / 1 Pound per Sheet of 40", slight crease through imprints, and Plate Number 16 at base with 'Crown / Postage / 6d' in red at left, extra horizontal row of perforations at base through the Plate number, of wonderful colour and freshness but for some minor nibbed perfs. in wing margin at right, superb large part or unmounted og. A magnificent multiple for the connoisseur of philately
Gi = £ 10'000.

Provenance: Collection J.C. North, RL, London, 2 May 1956
Stanley Gibbons, London, 23 Nov 1973, lot 40.

5 田*/** 5'000 (€ 4'500)

- 1886** 6 d. grey, plate 16, lettered GB-GC / IB-IC, a used block of six (2 x 3), of fine colour and appearance, lightly cancelled by obliterator handstamps in black. Minor ironed crease affects one stamp but an extremely scarce and attractive multiple Gi = £ 3'900.
Provenance: Collection W.L.E. Miller, RL, Basel VI, 28 Oct 1977, lot 2305.

5 田 1'000 (€ 900)



1887



1888



1889



1890



1891

Gibbons

Start price
in CHFStart price
approx. €

- 1887** **HALF-PENNY Surcharge (18 mm.)** 1881 (Feb-June): ½ d. on 1 d. red, plate 217, lettered RF, an unused example of fine colour, fresh and fine, large part og. A rare plate Gi = £ 900.
Provenance: Collection W.L.E. Miller, RL, Basel VI, 28 Oct 1977, lot 2326.
- 1888** ½ d. on 1 d. red, plate 220, lettered AL, an unused example of good colour and large part og. Scarce Gi = £ 325.
- 1889** ½ d. on 1 d. red, plate 208, lettered QK, an unused example with variety PENXY in HALF-PENNY and broken "S" in CYPRUS, fine large part og. An unusual stamp Gi = £ 200+.
- 1890** ½ d. on 1 d. red, plate 208, lettered EI, a used example cancelled by large part strike of the Constantinople "C" obliterator in black. Rare - the Constantinople British Post Office killer is only known on this one plate Gi = £ 350+.
- 1891** ½ d. on 1 d. red, plate 208, lettered GE-GF, an unused horizontal pair in a pale rosy shade, fresh and fine, large part og. Gi = £ 400+.

| | | | |
|-------|---|------------|---------|
| 7 | * | 250 | (€ 225) |
| 7 | * | 120 | (€ 110) |
| 7 var | * | 100 | (€ 90) |
| 7 | | 120 | (€ 110) |
| 7 | * | 120 | (€ 110) |



1892



1893



1894

- 1892** ½ d. on 1 d. red, plate 201, lettered BG.BH / CG-CH, an unused block of four, first stamp BG showing the HALF-PENN for HALF-PENNY variety clearly, fresh and very fine, large part og. A magnificent and very rare positional multiple. Cert. BPA (2019) Gi = £ 3'300+.
Provenance: Collection Mrs. V.H. Richardson, RL, London, 6 July 1960.
- 1893** ½ d. on 1 d. red, plate 205, lettered LF-LJ, a used horizontal strip of five, stamp LG showing the HALF-PENN for HALF-PENNY variety clearly, tied to small piece by neat strikes of the "Lamaca / Cyprus" cds (April 23, 1881) in black. The first and fourth stamps also show the 'Small second N' in PENNY variety. A charming and rare piece. Signed A.L. Pemberton Gi = £ 3'100+.
Provenance: Collection Mrs. V.H. Richardson, RL, London, 6 July 1960.
- 1894** **HALF-PENNY Surcharge (16½ mm.)** 1881 (Feb-June): ½ d. on 1 d. red, plate 201, lettered DJ-DL / GJ-GL, an unused block of twelve, marginal from right of sheet and showing imprint "PRICE 1d. Per Label. 1/- Per Row of 12. £1...", of fresh colour and superb large part or unmounted og. A magnificent and scarce multiple Gi = £ 1'560+.
Provenance: Collection W.L.E. Miller, RL, Basel VI, 28 Oct 1977, lot 2332.

| | | | |
|-------|-------|--------------|---------|
| 7+ 7a | 田*/** | 1'000 | (€ 900) |
| 7+ 7a | △ | 1'000 | (€ 900) |
| 8 | 田*/** | 400 | (€ 360) |



"Double Surcharge"



"Double Surcharge"

1895

1895 ½ d. on 1 d. red, plate 201, lettered MD-ML / TD-TL, an unused block of seventy-two, marginal from base of sheet showing imprint "Place the Labels ABOVE the Address and towards the RIGHT HAND SIDE of the Letter. In Wetting the Back be careful not to remove the Cement" with requisition number '238' below. A multiple of extraordinary freshness showing two examples of the variety: "Double Surcharge" on stamps PL and SI and a bounce print on stamp TG. Fresh and remarkably fine for a multiple this size with large part and predominantly unmounted og. Gi = £ 16'750+.
Provenance: Stanley Gibbons, London, 18 Oct 1979, lot 65.

Gibbons Start price in CHF Start price approx. €
8+ 8a 田*/** 5'000 (€ 4'500)



1896



1897



1899

Gibbons

Start price
in CHFStart price
approx. €

- 1896** **HALF-PENNY Surcharge (13 mm.)** 1881 (June 1): ½ d. on 1 d. red, plate 215, lettered NL, an unused example with variety: "Surcharge Treble", fresh and fine with surcharge ink from the sheet beneath on large part og. A scarce and unusual stamp Gi = £ 800.

9ba

*

200

(€ 180)

- 1897** ½ d. on 1 d. red, plate 217, lettered EJ-EK / FJ-FK, an unused block of four of fine centering and fresh colour, large part og. A scarce and attractive multiple Gi = £ 640+.

Provenance: Spink, London, 8 Nov 2006, lot 1268.

9

田*

200

(€ 180)



1898

- 1898** ½ d. on 1 d. red, plate 217, lettered LH-LL, a used horizontal strip of five of fresh colour, tied to small piece by "Larnaca / Cyprus" cds's (June 1, 1881) - the First Day of Issue. Charming and scarce Gi = £ 550.

9

△

200

(€ 180)

- 1899** 1881 (June): 30 pa. on 1 d. red, plate 220, lettered QL, an unused example showing variety "Surcharge Double, One Inverted", with rounded lower right corner and blunted perfs., small part og. A presentable example of this rare stamp Gi = £ 1'900.

10aa

*

300

(€ 270)



1900



1901

- 1900** 30 pa. on 1 d. red, plate 201, lettered KE-KG / LE-LG, an unused block of six of good colour, fresh and fine appearance, typical wrinkles on large part or unmounted og. An attractive multiple Gi = £ 1'000+.

10

田*

250

(€ 225)

- 1901** 30 pa. on 1 d. red, plate 216, lettered CA-CC / EA-EC, an unused block of nine, of fresh rich colour, of fine appearance with large part or unmounted og. A scarce and most attractive multiple Gi = £ 1'350.

Provenance: Spink, London, 8 Nov 2006, lot 1269.

10

田*/**

400

(€ 360)



1902

Gibbons

Start price
in CHF Start price
approx. €

- 1902** 1881 (July 1): ½ pi. emerald-green, Die I, wmk. Crown CC, an unused block of six (3 x 2), corner marginal from upper left of sheet showing Plate Number "1" in margin which is trimmed, stamps fresh and fine with large part or unmounted og. A rare multiple Gi = £ 1'000+.
Provenance: RL, London, 26 April 1979, lot 34.

11 田*/**

350 (€ 315)

1903



1904



1905



ex 1906

- 1903** 1881: De La Rue Imperforate Proof in issued colour for 1 pi. in pale rose, Die I on watermarked CC paper, unused without gum. Rare.
- 1904** 1881 (July 1): 2 pi. blue, Die I, wmk. Crown CC, a used horizontal pair, lightly cancelled by "982" obliterator of Famagusta. Scarce and attractive Gi = £ 70+.
- 1905** 1881: De La Rue Imperforate Proof in issued colour for 4 pi. in (bright) olive-green, Die I on watermarked CC paper, frame break at lower right below value tablet, minor gum bend on large part og. Rare.
- 1906** 1881 (July 1): De La Rue set of five values, Die I, wmk. Crown CC, the unused complete set with 2 pi. blue with corner thin, 4 pi. pale olive-green and rare 6 pi. olive-grey both signed A. Diena; large part og., minor imperfections but a very scarce set Gi = £ 3'750+.

12 Proof

(*)

350 (€ 315)

13

75 (€ 70)

14 Proof

*

500 (€ 450)

11/15

*

850 (€ 765)

1907

- 1907** 6 pi. olive-grey, Die I, wmk. Crown CC, a used block of ten (5 x 2) of good centering and colour, first stamp with top perfs. blunted, cancelled lightly by "Larnaca / Cyprus" squared circle datestamps (Aug 28, 1882) in black. Minor bend of absolutely no importance, an extraordinary and extremely rare multiple Gi = £ 4'750+.

15

田

1'500 (€ 1'350)



1908



1909

| Gibbons | | Start price in CHF | Start price approx. € |
|---------|---|-----------------------|--------------------------|
| 16 | * | 1'000 | (€ 900) |
| 16 | * | 3'500 | (€ 3'150) |

- 1908

1882 (May): ½ pi. emerald-green, Die I, wmk. Crown CA, an unused example in a bright shade, of excellent fresh colour, barely noticeable gum bend, two small ink marks on large part og. A lovely example of a very rare stamp. Cert. BPA (2019) Gi = £ 5'000.
- 1909

½ pi. emerald-green, Die I, wmk. Crown CA, an unused horizontal pair of fresh colour, two blunted perfs at lower left of first stamp, of superb appearance, an immensely rare mutiple of this stamp, cert. BPA (2019) Gi = £ 10'000.
Provenance: Collection W.L.E. Miller, RL, Basel VI, 28 Oct 1977, lot 2368.



City view of Nicosia



1910

- 1910

½ pi. emerald-green, Die I, wmk. Crown CA, a fine used example on 1882 entire letter to Nicosia tied by bold strike of "Larnaca / Cyprus" squared circle datestamp (May 23) in black. Reverse with "Nicosia / Cyprus" arrival cds (May 24) in black. Central file fold well away from adhesive, a wonderful and rare entire used in first month of issue.
Provenance: RL, London, 26 April 1979, lot 42.



1911



1913



1912



1914



1918



1915



1916

| | | Gibbons | | Start price in CHF | Start price approx. € |
|-------------|--|-------------|-----|-----------------------|--------------------------|
| 1911 | 1882 (June 7): 30 pa. pale mauve, Die I, wmk. Crown CA, an unused example of fine colour, showing variety "Top Left Triangle Detached", fresh appearance, unused without gum. A rare stamp Gi = £ 2'500. <i>Provenance: DF, Geneva, 28 April 2009, lot 30329.</i> | 17a | (*) | 350 | (€ 315) |
| 1912 | 30 pa. pale mauve, Die I, wmk. Crown CA, an unused example overprinted SPECIMEN (Type D12) in black. Slightly blunted perfs. at top, disturbed large part og. Very scarce. Cert. BPA (2019). <i>Provenance: Collection Marcus Samuel.</i> | 17 spec | * | 300 | (€ 270) |
| 1913 | 30 pa. pale mauve, Die I, wmk. Crown CA, a used example showing variety "Damaged US", lightly cancelled by squared circle datestamp (May 19, 1890) leaving the variety clear. Rare Gi = £ 500. | 17b | | 150 | (€ 135) |
| 1914 | 1883 (March): 1 pi. bright rose, Die I, wmk. Crown CA, a used example showing variety "Top Left Triangle Detached", lightly cancelled by "Larnaca / Cyprus" squared circle datestamp (Sept 1891) leaving the variety clear, with normal for comparison Gi = £ 325. | 18a | | 120 | (€ 110) |
| 1915 | 1883 (April): 2 pi. blue, Die I, wmk. Crown CA, a used example showing variety "Top Left Triangle Detached", lightly cancelled by clear "Limassol / Cyprus" squared circle datestamp (Oct 3, 1887) leaving the variety clear. A most attractive stamp Gi = £ 375. | 19a | | 120 | (€ 110) |
| 1916 | 1886 (Jan): 12 pi. orange-brown, Die I, wmk. Crown CA, an unused example of good colour, overprinted SPECIMEN (Type D12) in black with variety "Broken M" in SPECIMEN, part og. Extremely rare and probably unique. | 22 spec var | * | 500 | (€ 450) |



1917

| | | | | | |
|-------------|---|---------|---|--------------|-----------|
| 1917 | Nicosia Lithographic "1/2" Surcharges 1882 (June): 1/2 on 1/2 pi. emerald-green, Die I, wmk. Crown CC, an unused horizontal strip of six, the complete Setting with position 3 showing variety "Spur on 1", of excellent fresh colour, hinged for protection, superb large part og. A magnificent and important multiple. Cert. BPA (2019) Gi = £ 5'000+. | 23+ 23c | * | 2'000 | (€ 1'800) |
| 1918 | Nicosia Lithographic "30 PARAS" Surcharges 1882 (May 22): 30 pa. on 1 pi. rose, Die I, wmk. Crown CC, an irregular used block of five (Types 1-2 / 1-2-3), all neatly cancelled by "Larnaca / Cyprus" squared circle datestamps (May 24, 1882) in black. An exceptional and rare multiple (Robson Lowe Encyclopaedia rates blocks at 8x normal), used on Third Day of Issue Gi = £ 550+. | 24 | 田 | 300 | (€ 270) |



View of Larnaca



1919

Gibbons

Start price in CHF Start price approx. €

1919 30 pa. on 1 pi. rose, Die I, wmk. Crown CC, a used horizontal strip of five (Types 1-5) on 1882 registered cover to Hull, all tied by "Larnaca / Cyprus" squared circle datestamps (June 11) in black with circular "Larnaca / Cyprus" circular datestamp at left and oval "Registered / Cyprus" (June 11) struck in red below. London transit (June 19) in red and reverse with Hull arrival cds. Some trivial cover bends and aging but a magnificent and extremely rare usage of this provisional issue on letter.

24



5'000 (€ 4'500)



1920

1920 Typographed "1/2" Surcharge / 8 mm. Spacing 1866 (May 27): 1/2 on 1/2 pi. emerald-green, wmk. Crown CC, an unused example of excellent fresh colour, variety "Small "1" at Right", part og. An exceptionally fine example of this extremely rare stamp, cert. BPA (2019) Gi = £ 16'000.

Provenance: Collection Mrs. V.H. Richardson, RL, London, 6 July 1960.
Stanley Gibbons, London, 24 June 1998, lot 0025.

28b

*

5'000 (€ 4'500)



1921



1922



1923

Gibbons

Start price
in CHF Start price
approx. €

- 1921** ½ on ½ pi. emerald-green, Die I, wmk. Crown CC, a used example, slightly faded, showing the variety "Large 1" at Left" (Row 4, Stamp 4, position 22), cancelled by "Limassol / Cyprus" squared circle datestamp (June 9, 1886) in black. A scarce stamp Gi = £ 1'900.
Provenance: DF, Geneva, 28 April 2009, lot 30344.

28a

300 (€ 270)

- 1922** ½ on ½ pi. emerald-green, Die I, wmk. Crown CA, an unused example of good colour showing variety "Large 1" at Left" (Row 4, Stamp 4, position 22), fresh and fine appearance, hinge remnant on large part og. A very rare stamp. Cert. BPA (2019) Gi = £ 4'000.

29a

*

1'000 (€ 900)

- 1923** ½ on ½ pi. emerald-green, Die I, wmk. Crown CA, a used example of good colour showing variety "Large 2" at right" (Row 3, Stamp 4, position 16), lightly cancelled by part squared circle datestamp in black. Scarce and fine Gi = £ 350.

29d

120 (€ 110)

1924

- 1924** ½ on ½ pi. emerald-green, Die I, wmk. Crown CA, an unused block of four of good colour, second stamp with variety "Large 2" at right", fourth stamp showing variety "Large 1" at Left" (Row 4, Stamp 4, position 22), minor horizontal gum bends not affecting the fine appearance, large part og. Rare. Cert. BPA (2019) Gi = £ 5'500+.

29a+ 29d+
29

田*

1'500 (€ 1'350)

1925



1926



ex 1927



ex 1928

- 1925** 1892/94: Die II, 30 pa. mauve, an unused example showing variety "Damaged US in CYPRUS" (Row 5, Stamp 5), fresh and fine, large part og. Scarce Gi = £ 350.

32a

*

120 (€ 110)

- 1926** De La Rue Imperforate Plate Proof for 2 pi. value in ultramarine, Die II on wmk. Crown CA paper, large margins all round with Jubilee line at right, fresh and very fine, unmounted og. Rare.
Provenance: Grosvenor, London, 20 May 2010, lot 1926.

34 Proof

**

500 (€ 450)

- 1927** Die II, the definitive set of seven values unused, including additional 4 pi. pale olive-green, fresh and fine, large part og. Gi = £ 450+.

31/37

*

150 (€ 135)

- 1928** 1894/96: Bicoloured set of 10 values, Die II, complete to 45 pi. grey-purple & blue, fresh and very fine, superb og. The high value signed A. Diena Gi = £ 350.

40/49

*

120 (€ 110)



View of Limassol



1929

Gibbons

Start price in CHF

Start price approx. €

- 1929
- 1/2 pi. green & carmine, 30 pa. bright mauve & green in a vertical pair, 1 pi. carmine & blue in a vertical pair, all used on 1898 registered cover addressed to Arthur William Rothschild in Bucharest, Romania, tied by "Limassol / Cyprus" squared circle datestamps (April 25) in black, with faint 'Registered / Cyprus' in red at left. Reverse with Bucharest arrival cds (May 8). Slightly trimmed at top but an attractive three colour usage.
Provenance: Collection 'Aphrodite', Spink, London, 14 Feb 2009, lot 236.

40+ 41+ 42

✉

250

(€ 225)



1930

- 1930
- 1893 (July 26): Bicoloured De La Rue Imperforate Proof on wove paper for the Die II 9 pi. value, printed in brown with lettering hand-painted in carmine ink, large margins all round, horizontal crease not affecting the appearance of an extremely rare working Proof - The Crown Agents accepted the Proof proposal on August 20, 1893. Illustrated in 'The De La Rue Collection' edited by Frank Walton RDP on page 2644. A magnificent and rare Essay: unique.
- 1931
- 1894/96: Bicoloured issue, the partial unused set of seven values, all in corner marginal blocks of four, all showing Plate Number "4" in margin, with 1/2 pi., 1 pi., 2 pi. (this in a base of pane block of twelve, some minor creasing but most attractive), 4 pi., 6 pi., 9pi. and 12 pi., wonderfully fresh and fine, large part or unmounted og. A very fine group Gi = £ 650+.

46 Proof

(*)

500

(€ 450)

40/47

田**

200

(€ 180)



1932



1935

Gibbons

Start price
in CHF Start price
approx. €

- 1932** 1902: Imperforate photographic bromide stamp size Proof put forward for acceptance (the head-plate with lined background is partially hand-drawn and was unadopted), mounted on thick card, 89 x 113 mm., endorsed at top "FEB 8, 1902" with "DUPLICATE" at lower left. Fresh and very fine, extremely rare.
Provenance: Collection Walter C. Hetherington, RL, Basel, 7 April 1978, lot 2282.

50 Proof (*) **1'000** (€ 900)



1933



1934



ex 1936



ex 1937

- 1933** 30 pa. violet & green, wmk. Crown CA, a Plate Proof in issued colour, imperforate with margin at base, fresh and very fine appearance, horizontal gum crack not affecting the fine appearance, large part og. Rare only the ½ pi. and 30 pa. are known imperforate.
- 1934** 1902/04: 30 pa. violet & green, an unused example of slightly faded colour, clearly showing the variety: "Damaged US in CYPRUS and frame break below", Row 5, Stamp 5, slight adherence on large part og. A scarce stamp Gi = £ 450.
- 1935** 45 pi. dull purple & ultramarine, wmk. CA, a superb unused block of four, marginal from base of sheet, of fresh colour and appearance, top pair with hinge remnant and lower pair unmounted og. A scarce and attractive block Gi = £ 800.
- 1936** Definitive set of ten values, wmk. Crown CA, all overprinted SPECIMEN in black, the ½ pi. suffused at base, 2 pi. with slight tone spot on perf. at top, heavily mounted part og., together with 1904/10 SPECIMEN set of two values. Imperfections but scarce Gi = £ 580.
- 1937** 1904/10: 30 p. purple & green, wmk. Multiple Crown CA, unused examples (2), one showing variety "Broken Top Left Triangle", the other with variety: "Damaged US in CYPRUS", each fresh and fine, large part og. Scarce Gi = £ 725.
- 1938** Watermark Multiple Crown CA, unused examples all showing variety "Broken Top Left Triangle" flaw, (Left pane, Row 7, Stamp 5), with 5 pa. bistre & black, 10 pa. orange & green, 1 pi. carmine & blue, 2 pi. blue & purple all showing the flaw clearly, largely fresh and fine, large part og. Scarce Gi = £ 940.

51 Proof * **150** (€ 135)

51b * **150** (€ 135)

59 田*/** **250** (€ 225)

50/59 spec + 60/61 spec * **120** (€ 110)

63b+ 63c * **250** (€ 225)

60a+ 61c+ 64a+ 65a * **200** (€ 180)

(Photo = www)



1939



De La Rue Company

Gibbons

Start price
in CHFStart price
approx. €

- 1939** 1912: De La Rue Master Die Proof, without Country Name and Value, printed in black on glazed white card, stamp size on card from the DLR archives, dated "Feb 16th, 12" in red ink with printing requirements above. Unique.

*Provenance: Collection Chris Cruttwell, Argyll Etkin, London
DF, Geneva, 28 May 2009, lot 30375.*

74 Proof

(*)

500

(€ 450)



1940



1944

- 1940** 1912/15: 4 pi. olive-green & purple, wmk. Multiple Crown CA, an unused horizontal pair, marginal from lower right corner of the sheet, first stamp with Plate Number "1" below and second stamp showing "Broken Bottom Left Triangle" variety, minor gum wrinkles on unmounted og. A scarce pair Gi = £ 190+.

79a

**

75

(€ 70)



ex 1941



1943


- 1941** Definitive set of 12 values, wmk. Multiple Crown CA, all overprinted SPECIMEN in black, the ½ pi. with a few nibbed perfs. otherwise fresh and very fine, large part og. Scarce Gi = £ 550.

74/84 spec

*

180

(€ 160)

- 1942** Definitive issue, wmk. Multiple Crown CA, six values: 10 pa. (2 examples), 30 pa. 1 pi., 2 pi., 4 pi. (a tad suffused) and 6 pi. with vertical crease, all fine used, all showing "Broken Bottom Left Triangle" flaw clearly. A scarce group Gi = £ 960. (Photo =  www)

180

(€ 160)

- 1943** 18 pi. black & brown, wmk. Multiple Crown CA, an unused example (Row 10, stamp 6), of fine colour and showing the variety: "Broken Bottom Left Triangle", superb large part og. A rare stamp Gi = £ 750.

83a

*

250

(€ 225)

- 1944** 45 pi. dull purple & ultramarine, wmk. Multiple Crown CA, an unused horizontal pair, marginal from lower right corner of the sheet, first stamp with Plate Number "1" below and second stamp showing "Broken Bottom Left Triangle" variety, first stamp with gum wrinkle otherwise superb, unmounted og. A rare pair Gi = £ 1930.

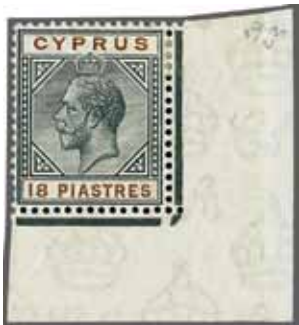
Provenance: Harmers, London, 8 July 1999, lot 893.

84a+ 84

**

600

(€ 540)



ex 1945



ex 1946

- 1945** 1921/23: Definitive issue, wmk. Multiple Script CA, ten values: 10 pa. (both colours), 30 pa. green, 1 pi. (both), 1½ pi., 2 pi. carmine & blue, 2¾ pi. 4 pi. and 18 pi. (this last corner marginal), all showing the variety: "Broken Bottom Left Triangle", the 1½ pi. with blunted perfs. otherwise largely fresh and fine, large part og. A scarce assembly Gi = £ 3'485.
- 1946** Definitive set of fifteen, wmk. Multiple Script CA, an unused complete set, all overprinted SPECIMEN in black (the 18 pi. in red), fresh and fine, unmounted og. A very scarce set Gi = £ 700.

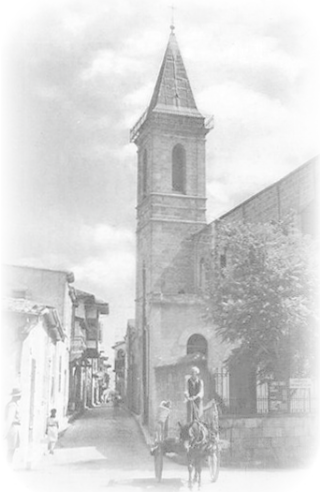
| Gibbons | Start price in CHF | Start price approx. € |
|------------|-----------------------|--------------------------|
| 85a+ 86a+ | | |
| 88a+ 89a+ | | |
| 90a+ 91a+ | | |
| 93a+ 94a+ | | |
| 95a+ 98a | * | 1'000 (€ 900) |
| 85/99 spec | ** | 250 (€ 225) |



1947

- 1947** 18 pi. black & brown, a used example tied to 1924 registered cover to London by "Nicosia" cds in black. Registration label below and reverse with 'Registered / London' arrival datestamp (April 27) in red. Scarce and fine cover.
Provenance: Harmers, London, 21 Feb 2001, lot 964.

98 ✉ **200** (€ 180)



Victoria Road in Nicosia

Your written bids will be used only as long as any personally present bidders in the auction room or any other written bids are competing against you. Lots are sold at the lowest price possible: if, for example, you bid CHF 2,200 for a certain stamp and the nearest bid (written or verbal) amounts to CHF 1,500, you will obtain the lot for CHF 1,600 (i.e. CHF 600 less than your bid, please refer to minimum charge scale published in this catalogue). We represent you exactly as if you were attending the sale.



1948



1949



1950

Gibbons

Start price
in CHF Start price
approx. €

- 1948** 1923: £ 1 purple and black on red, a used example neatly tied to small piece by complete "Larnaca / Cypus" circular datestamp (July 4, 1924) in black. Superb and very rare Gi = £ 3'500.
Provenance: Bonhams, London, 28 Jan 2009, lot 535.
- 1949** 1924: £ 1 purple & black on red, wmk. Multiple Crown CA, an unused example with Plate Number "1" in margin at top, unmounted og. A lovely stamp Gi = £ 300.
- 1950** £ 1 purple & black on red, wmk. Multiple Crown CA, an unused example from top right corner of sheet with Requisition number "102" in margin at top, superb large part og. Gi = £ 300.
Provenance: Renato Mondolfo (1986).

101

△

1'500 (€ 1'350)

102

**

120 (€ 110)

102

*

100 (€ 90)

ex 1951



ex 1952



1953

- 1951** 1923: 10 s. green & red on yellow and £ 1 purple & black on red, the set of two values, overprinted SPECIMEN in black, each of fine fresh colour and unmounted og. Scarce set Gi = £ 600.
- 1952** 1924/28: Definitive set of 21 values from ¼ pi. grey & chestnut to £ 1 purple & black on red, all fresh and fine unused, nine of the values being Plate Number marginal examples, large part og. A scarce set Gi = £ 550.
- 1953** 1928: £ 5 black on yellow, an unused example of fine fresh colour, overprinted SPECIMEN in red, large part og. Rare Gi = £ 1'000.

101+ 102
spec

*

220 (€ 200)102/117+
118/122

*

200 (€ 180)

117a spec

*

350 (€ 315)

ex 1954

- 1954** 1928 (Feb 1): 50th Anniversary of British Rule, the set of ten values to £ 1 unused, overprinted SPECIMEN in red or black, fresh and very fine, large part og. Scarce Gi = £ 700.

123/132
spec

*

250 (€ 225)



1955

| | | Gibbons | Start price in CHF | Start price approx. € |
|------|---|---------|-----------------------|--------------------------|
| 1955 | 1934 (Dec 1): Salamis ½ pi. green, a used vertical pair showing variety: "Imperforate Between Horizontally", lightly cancelled by part "Limassol" cds in black. Minor blunted perf. at base mentioned only for full accuracy, otherwise extremely fine and very rare: the sole recorded pair in used condition, cert. BPA (2019) Gi = £ 20'000. <i>Note: 6 pairs are recorded, five unused and one used (W.T.F. Castle).</i> | 134a | 7'500 | (€ 6'750) |



1956

| | | | | | |
|------|---|------|---|-------|-----------|
| 1956 | Roman Theatre at Soli, 1 pi. black & red-brown, an unused horizontal pair, variety: "Imperforate Between Vertically", fresh and very fine, superb large part og. Extremely rare, with just ten unused pairs recorded. Cert. BPA (2019) Gi = £ 21'000. | 136a | * | 7'500 | (€ 6'750) |
|------|---|------|---|-------|-----------|




1957

| | | Gibbons | Start price in CHF | Start price approx. € |
|------|--|---------|-----------------------|--------------------------|
| 1957 | Roman Theatre at Soli, 1 pi. black & red-brown, a used vertical pair, variety: "Imperforate Between Horizontally", fresh and very fine, lightly cancelled in black. The adjoining pair to the Richardson / Aphrodite / Dikaïos pair. Splendid and extremely rare. Cert. BPA (2019) Gi = £ 25'000. | 136a | 8'500 | (€ 7'650) |



1958

| | | | | | |
|------|--|---------|-------|-----|---------|
| 1958 | 1938/51: Soli Theatre 1 pi. orange, the rare April 1944 perf. 13½ x 12½, an unused example, fresh and fine, unmounted og. An extremely elusive stamp Gi = £ 550. | 154a | ** | 200 | (€ 180) |
| 1959 | 1924/1951: Small collection on leaves with marginal 1924 £ 1 purple & black on red unused, 1928 issue registered cover to London franked 4¼ pi., 1928 4 pi. on Hendrey cover, 1934 Pictorial set of 11 unused, 1935 Silver Jubilee set unused and perf. SPECIMEN, 1937 Coronation set of three perf. SPECIMEN, 1938/51 pictorial definitive set of 19 to £ 1, 1946 Victory set perf. SPECIMEN, 1948 RSW 1½ d. 'extra decoration' variety in strip of three unused and £ 1 indigo unused Gi = £ 1'500+. | 102-171 | ✉*/** | 350 | (€ 315) |

(Photo =  www)