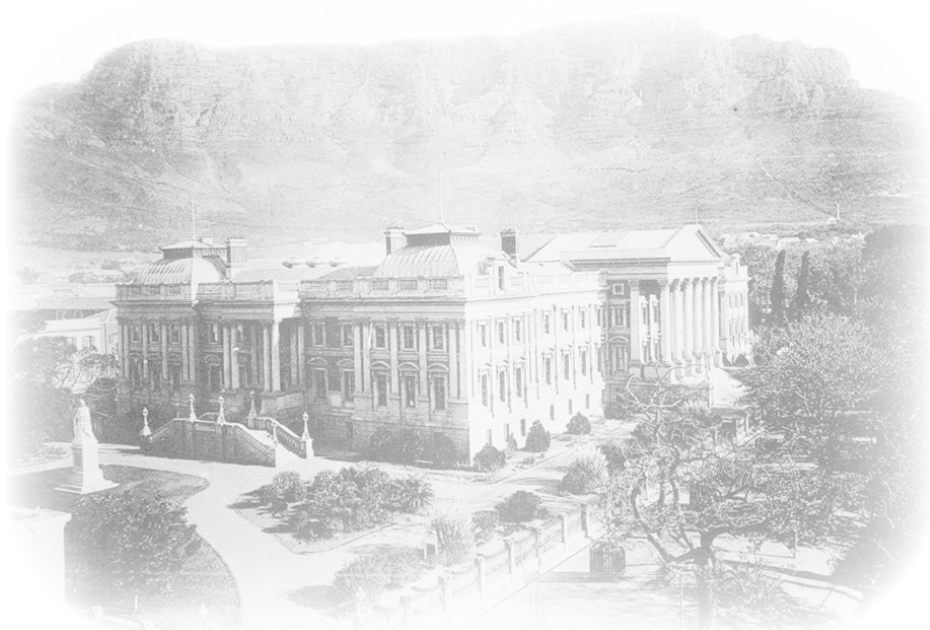


Thursday 5 December 2019, 15:30 h

PRE-UNION SOUTH AFRICA

The 'BESANÇON' Collection (part II)



Cape Town's Parliament House with Table Mountain in the background

Mafeking Siège Stamps

1900, MAFKING BESIEGED various stamps Surcharged by Townsend and Co., Mafeking



British Military Staff at Mafeking



6001

Gibbons

Start price
in CHF Start price
approx. €

- 6001** 'Mafeking Besieged' on Stamps of the Cape of Good Hope Surcharged 1 d. on Cape ½ d. green, Hope seated, a fine used block of four, first setting, neatly cancelled by second day of issue MAFKING / C.G.H. datestamp (March 24, 1900) in black. A fine and most attractive multiple Gi = £ 340+.

Provenance: Collection 'Goodyear', Robson Lowe, London, 8 June 1993, lot 4.

1 田 **180** (€ 160)



6002

- 6002** Surcharged 1 d. on Cape ½ d. green, Hope seated, two horizontal strips of four, formerly constituting a block of eight, used on roughly separated piece cancelled by seventh day of issue MAFKING / C.G.H. datestamp (March 29, 1900) in black. A fine and scarce piece Gi = £ 680+.

Provenance: 'A Scandinavian Collector', Stanley Gibbons, London, 14-17 April 1970, lot 753.
Collection 'Goodyear', Robson Lowe, London, 8 June 1993, lot 5.

1 △ **250** (€ 225)



6003

Gibbons

Start price
in CHF

Start price
approx. €

- 6003** Surcharged 1 d. on ½ d. green, 3 d. on 1 d. carmine, Hope standing and 6 d. on British Bechuanaland 3 d. lilac & black, all used on 1900 cover to Elgin, Scotland by the Southern route, tied by MAFEKING / C.G.H. datestamps (April 4) in black. Reverse with 'Elgin' arrival cds (June 24). File folds away from adhesives and a couple of closed tears in the envelope due to method of transport by native runner through the Siege lines, but an attractive and rare cover.

Provenance: Collection 'Goodyear', Robson Lowe, London, 8 June 1993, lot 76.

1+ 3+ 10



750 (€ 675)

*An armoured train manned by
British Army Soldiers*



6004

- 6004** Surcharged 1 d. on ½ d. green, Hope standing, with 3 d. on 1 d. lilac and 1 s. on 6 d. purple on red (surcharged Type 2) of Bechuanaland Protectorate on 1900 cover addressed to the Post Office at Bulawayo, tied by MAFEKING / C.G.H. datestamps (April 1) in black. Docketed correctly at '1/4d.' and initialled 'JN' (John Nevett) on the Base Train of Military Post Office in transit; reverse with 'Bulawayo / Rhodesia' arrival cds (April 6). Cover sensibly opened for exhibit display, a fine and most attractive cover.

*Provenance: Collection Maria de La Queillerie, Harmers, London, 18-19 May 1970, lot 457
Collection 'Goodyear', Robson Lowe, London, 8 June 1993, lot 85.*

2+ 7+ 14



1'200 (€ 1'080)



6005

Gibbons

Start price
in CHFStart price
approx. €

- 6005** Surcharged 3 d. on Cape 1 d. carmine, Hope standing, a fine unused example of good colour, minor gum bend not affecting delightful appearance, fresh and fine, large part og. Gi = £ 325.
Provenance: Collection "Mafeking", Guido Craveri, Lugano, 18 Feb 1994, lot 1509.

3

*

120

(€ 110)



In the trenches



6006

- 6006** Surcharged 3 d. on Cape 1 d. carmine, Hope standing, a block of four used on 1900 Northern route cover to Ireland, endorsed at top by 'W. H. Weeks, Chaplain, Bechuanaland Rifles', tied by MAFEKING / C.G.H. datestamps (April 19) in black. The envelope complete but for top flap and opened for display, showing on flap CROCODILE POOLS / SOUTH AFRICA cds (April 25) and 'Bulawayo / Rhodesia' transit cds's (April 30). Obverse with Lucan arrival (June 9) and readdressed to London. File folds but an extremely rare cover.
Provenance: Collection Maria de La Queillerie, Harmers, London, May 18-19, 1970, lot 461.
Collection Bill Hart, Cavendish, Derby, 25-26 June 1993, lot 1816.

3

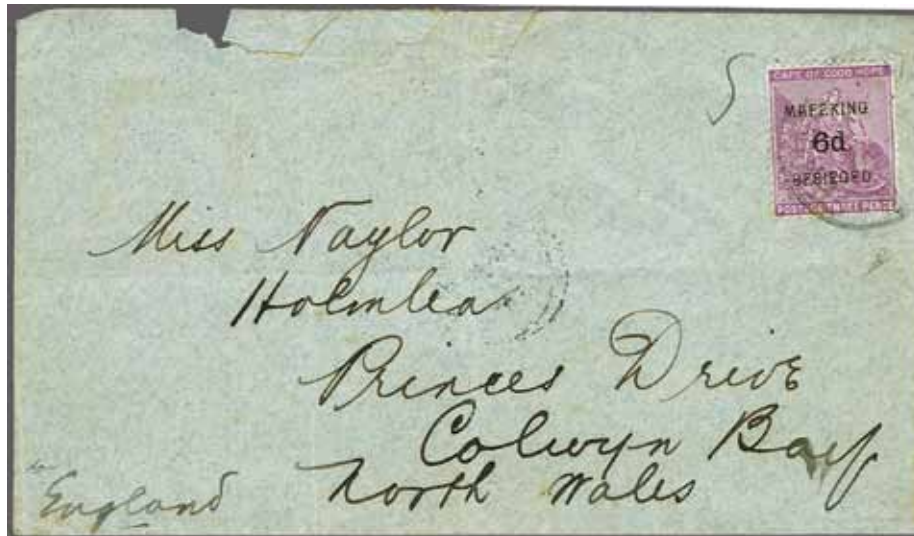
☒

1'500

(€ 1'350)



Street scene in Mafeking



6007

Gibbons

Start price in CHF Start price approx. €

- 6007** Surcharged 6 d. on Cape 3 d. magenta, used example of good colour tied to cover, with original contents dated March 23, 1900, mailed from Mafeking to Colwyn Bay, Wales tied by MAFEKING / C.G.H. datestamp in black of the First Day of Issue. The cover would have been carried out of the besieged town by Native runner, franked at 6 d. to pre-pay the Southern route via Vryburg and the Cape. Reverse with 'Barkly West' squared circle of transit (April 11) and Colwyn Bay arrival cds (May 6). The letter stating "Being privileged to send a few lines, I am happy to tell you I am safe and well. I am unable to write particulars at present, but as soon as communication is re-established I will write fully...". The adhesive with small perf. fault at base and envelope with minor opening tears at top, but of great rarity.

Provenance: Collection Bill Hart, Cavendish, Derby, 25-26 June 1993, lot 1821.

4



1'200 (€ 1'080)



6008

- 6008** Surcharged 1 d. on Cape 4 d. sage-green, Hope seated, an unused example of good colour, slight paper hinge attachment at top, fresh and very fine, part og. Just 1'440 stamps issued. An extremely rare stamp unused. Cert. BPA (1972) Gi = £ 8'000.
Provenance: Collection Howard & Torie Gibraltar, Shreves, New York, 15-16 Sept 2000, lot 1354.

5

*

2'000 (€ 1'800)

- 6009** Surcharged set of five values fine used, four used on individual pieces, all cancelled by MAFEKING / C.G.H. datestamps: 1 d. on May 12th, 1 d. standing on April 10th, 3 d. on March 26th, 6 d. on March 27th, 1 s. on March 28th. A scarce and very fine set Gi = £ 1'000+.

1/5



250 (€ 225)



6010

6010 'Mafeking Besieged' on Stamps of the Bechuanaland Protectorate Surcharged 1 d. on ½ d. vermillion, an unused example of good colour, fresh and fine, large part og. Signed A. Diena Gi = £ 325.

Gibbons			Start price in CHF	Start price approx. €
	6	*	120	(€ 110)



Mafeking town dug out used at the mint during the siege



6011

6011 Surcharged 1 d. on ½ d. vermillion, a used horizontal pair, variety "Surcharge Inverted", tied to small piece by MAFEKING / C.G.H. datestamp (March 31, 1900) in black. The top perforations close to the edge of piece, of great scarcity, especially so in a multiple of which there are but three vertical 'tête-bêche' pairs and a single 'tête-bêche' block of four recorded - this being the sole known pair with both stamps showing the variety. Cert. BPA (2019) Gi = £ 16'000.
*Note: It is believed 24 stamps would have been printed with this variety (four rows of six) with cancellation dates of March 31 and April 9. Of the surviving examples, 22 are currently recorded, at least four of which are damaged. One is housed in the Mosely collection in the British Museum, another example is in the collection of Her Majesty Queen Elizabeth II. Provenance: Robson Lowe, London, May 1984, lot 15
Robson Lowe, London, 19-20 Sept 1996, lot 30.*

6a	△	4'000	(€ 3'600)
----	---	-------	-----------



6012



6013

Gibbons

Start price
in CHF Start price
approx. €

6012 Surcharged 3 d. on 1 d. lilac, an unused example of rich colour, fresh and fine, large part og. Scarce, just 1'800 issued. Cert. Brandon (1980) Gi = £ 1'000.

Provenance: Collection 'Mafeking', Guido Craveri, Lugano, 18 Feb 1994, lot 1532.

7 * **250** (€ 225)

6013 Surcharged 6 d. on 2 d. green & carmine, an unused example of fine fresh colour, large part og. A scarce stamp with just 1'200 issued. Cert. Brandon (1985) Gi = £ 3'000.

Provenance: Collection 'Mafeking', Guido Craveri, Lugano, 18 Feb 1994, lot 1535.

8 * **800** (€ 720)



Louise Boyd Dale



Alfred Lichtenstein



6014

6014 Surcharged 6 d. on 3 d. purple on yellow, a used example showing variety: "**Surcharge Inverted**", tied to piece by complete MAFEKING / C.G.H. datestamp (First Day of Issue, March 30, 1900) in black. A perfect example of an enormously rare stamp - just 6 examples printed of which 5 have been recorded, all being used on day of issue and all being on piece. Signed David Field. Cert. BPA (1990) Gi = £ 42'000.

Reference: Known examples of SG 9a: One ex Urch Harris (Nov, 1978) and Harmers, Lugano, February 1994 (lot 1541).

One ex Harmers, London, Oct 1971, lot 326 with BPA certificate (1961).

One ex Harmers, London, April 1970, lot 610 with RPSL certificate (1933).

The example offered here which has the largest remaining part of the piece.

One is housed in the collection of Her Majesty Queen Elizabeth II.

Provenance: Collection Louise Boyd Dale & Alfred Lichtenstein, Harmers,

Washington DC, 25-29 Nov 1989, lot 648

Collection 'Samos', Ivy, Shreve & Mader, London, 19-20 June 1991, lot 277.

Collection Gian Maria Rossi, Warwick & Warwick, 8 June 2005, lot 240.

9a △ **15'000** (€ 13'500)



'G' of 'BESIEGED'
broken



6015



6016

Gibbons

Start price
in CHF Start price
approx. €

- 6015** 'Mafeking Besieged' on Stamps of the British Bechuanaland Surcharged 6 d. on 3 d. lilac & black, an unused example of good colour, Type IV with 'G' of 'BESIEGED' broken, corner crease and slight soiling on top perforations, large part og. Scarce, just 3'600 issued Gi = £ 550.

10 * **150** (€ 135)

- 6016** Surcharged 6 d. on 3 d. lilac & black, a used block of four of attractive appearance, Types II-III, tied to small piece by MAFEKING / C.G.H. datestamps (March 30) in black. The piece cut somewhat close but a fine and very rare multiple Gi = £ 380+.
*Provenance: Collection Maria de La Queillerie, Harmers, London, 18-19 May 1970, lot 482.
Collection 'Goodyear', Robson Lowe, London, 8 June 1993, lot 37.*

10 △田 **200** (€ 180)



Colonel Baden Powell's Headquarters during the Siege



6017

- 6017** Surcharged 6 d. on 3 d. lilac & black, a horizontal pair (positions 5-6) used on large cover addressed to Colonel Baden Powell, Head Quarters, Mafeking, each tied by MAFEKING / CGH datestamps in black (April 29). Vertical file folds, one of which is through the right hand stamp but a rare and most unusual cover. Cert. BPA (2019).

10 ✉ **250** (€ 225)



6018

Gibbons

Start price
in CHF

Start price
approx. €

- 6018** Surcharged 1 s. on 4 d. green & purple-brown, an unused example of good colour, trivial aging on perfs. only noticeable from the reverse otherwise fresh and fine, large part og. A rare stamp with just 2'320 issued. Cert. BPA (2019) Gi = £ 1'600.

11

*

400 (€ 360)



6019



6020

- 6019** Surcharged 1 s. on 4 d. green & purple-brown, used example on piece showing variety: "Surcharged Double with Type 1 and Type 2" clearly, cancelled by MAFEKING / C.G.H. datestamp (May 1) in black. Possibly Trial Surcharges - this stamp and variety initially discussed by H.R.Holmes in the 'London Philatelist' (Volume 81, April 1972, number 952), a copy of this article accompanies the lot. Rare and very fine with less than 20 examples recorded. Cert. BPA (1987) Gi = £ 8'000.

Provenance: Collection 'Goodyear', Robson Lowe, London, 8 June 1993, lot 45.

11ab

△

2'000 (€ 1'800)

- 6020** Surcharged 1 s. on 4 d. green & purple-brown, used example on piece showing variety: "Surcharged Double with Type 1 and Type 2" clearly, cancelled by MAFEKING / C.G.H. datestamp (May 1) in black, slightly defective at base. Possibly Trial Surcharges - this stamp and variety initially discussed by H.R.Holmes in the 'London Philatelist' (Volume 81, April 1972, number 952), a copy of this article accompanies the lot. Rare and very fine with less than 20 examples recorded. Cert. BPA (2019) Gi = £ 8'000.

11ab

△

1'500 (€ 1'350)



6021

- 6021** Surcharged 1 s. on 4 d. green & purple-brown, used example on Northern route cover smuggled out of besieged Mafeking by native runner, tied by MAFEKING / C.G.H. datestamp (April 12) in black. Mailed on to Cape Town and backstamped 'Crocodile Pools / South Africa' (April 20), 'Bulawayo / Rhodesia' (April 23) and squared circle 'G.P.O. Cape Town / CGH' arrival (May 6). Cover creased due to the method of carriage but not affecting the fine adhesive. A great rarity.

11

✉

2'000 (€ 1'800)



6022

Gibbons

Start price
in CHF Start price
approx. €

- 6022** 'Mafeking Besieged' Type 2 on Stamps of the Bechuanaland Protectorate Surcharged 3 d. on 1 d. lilac, a used block of four on piece, neatly tied by three strikes of the MAFEKING / C.G.H. datestamp (May 8) in black. Minor crease not affecting the appearance of a fine and scarce multiple, just 1'800 stamps printed $G_i = £ 400+$.

Provenance: Collection 'Goodyear', Robson Lowe, London, 8 June 1993, lot 50.

12 △田 **180** (€ 160)



6023

- 6023** Surcharged 1 s. on 6 d. purple on rose-red, an unused example of excellent colour, fresh and fine, large part og. An exceptional stamp of great rarity unused, with no example present in the C. Emerson Huston, Maria de La Queillerie or Sir Maxwell Joseph collections, just 1'440 stamps issued. Signed Herbert Bloch. Cert. Brandon (1982), BPA (2019) $G_i = £ 7500$.

Provenance: Collection 'Mafeking', Guido Craveri, Lugano, 18 Feb 1994, lot 1561

14 * **2'000** (€ 1'800)



6024

- 6024** Surcharged 1 s. on 6 d. purple on rose-red, a used block of four, of good resonant colour, cancelled by MAFEKING / C.G.H. datestamps (May 4) in black. A fine and scarce multiple with just 1'440 stamps issued $G_i = £ 520+$.

Provenance: Collection 'Goodyear', Robson Lowe, London, 8 June 1993, lot 55.

14 田 **200** (€ 180)



Mafeking's Post Office Dugout



6025

Gibbons
Start price in CHF Start price approx. €

6025	Surcharged 1 s. on 6 d. purple on rose-red, an unused example of rich colour, centred to base with minute vertical bend not affecting the appearance, otherwise very fresh and fine, large part og. Just 240 examples, one sheet, issued. Only five examples of this exceedingly rare stamp are recorded in unused condition. Cert. BPA (1975) Gi = £ 35'000. Provenance: Collection Gian Maria Rossi, Warwick & Warwick, 8 June 2005, lot 254.	15	*	10'000	(€ 9'000)
------	----------------------------------------------------------------------------------------------------------------------------------------------------------------------------------------------------------------------------------------------------------------------------------------------------------------------------------------------------------------------------------------------------------------------------------------------------	----	---	--------	-----------



Mafeking's Unit of the Town Guard



6026

Gibbons Start price Start price
in CHF approx. €

6026	Surcharged 2 s. on 1 s. green, an unused example of perfect centering and good strong colour, merest hint of vertical gum crease, fresh and very fine for this stamp, superb large part og. Without doubt one of the finest of the few examples extant. Just 570 issued and exceptionally rare in unused condition. Cert. Brandon (1989) Gi = £ 15'000. Provenance: Collection 'Mafeking', Guido Craveri, Lugano, 18 Feb 1994, lot 1574.	16	*	4'000	(€ 3'600)
------	---------------------------------------------------------------------------------------------------------------------------------------------------------------------------------------------------------------------------------------------------------------------------------------------------------------------------------------------------------------------------------------------------------------------------------------------	----	---	-------	-----------



ex 6027



ex 6028

6027	'Mafeking Besieged' on Stamps of Bechuanaland Protectorate Used selection with Surcharged 1 d. on ½ d. vermillion, on piece (April 19); 6 d. on 2 d. green & carmine (two examples) with faded example (April 21) and superb example of good colour on small piece (April 23) and 6 d. on 3 d. purple on yellow superb on small piece (April 7); and on British Bechuanaland 6 d. on 3 d. lilac & black (April 7), signed Brandon and showing large shift of surcharge to left; and 1 s. on 4 d. green & purple-brown on toned piece (April 17). A generally fine and scarce group Gi = £ 950.	6+ 8+ 9+ 10+ 11+ 12+ 13	△	200	(€ 180)
6028	'Mafeking Besieged' Type 2 on Stamps of Bechuanaland Protectorate 3 d. on 1 d. lilac, used on small piece with complete cds (May 11), 6 d. on 2 d. green & carmine of rich colour (Type IV) on small piece (April 28), 1 s. on 6 d. purple on rose-red superb used (May 4) and faded 2 s. on 1 s. green of British Bechuanaland well cancelled (May 10). A scarce group Gi = £ 980.	12+ 13+ 14+ 16	△	200	(€ 180)

1900, Cadet Sergeant Major Goodyear and General Baden-Powell



6029



6030

Gibbons

Start price
in CHF Start price
approx. €

- 6029** Goodyear 1 d. pale blue on blued horizontally laid paper, two examples used on O.H.M.S. blue piece, the piece formerly separated and now rejoined, each stamp cancelled by MAFEKING / C.G.H. datestamp (May 11) in black. Left hand stamp with corner crease, right hand stamp very fine Gi = £ 650.

17

△

200 (€ 180)

- 6030** Goodyear 1 d. pale blue on blued horizontally laid paper, a fine used example, Plate III, position 34 (10), showing the "Broken Value Tablet" with nine vertical white lines running to the margin, the MAFEKING / C.G.H. datestamp (May 11) leaving the variety mostly clear Gi = £ 325+.

17 var

200 (€ 180)

6031



6032

- 6031** Goodyear 1 d. deep blue on blued horizontally laid paper, a fine used example, position 11 on the sheet of twelve subjects, of deep colour, cancelled by near complete upright strike of MAFEKING / C.G.H. datestamp (May 5) in black. Some peripheral aging on perforations Gi = £ 325.

18

120 (€ 110)

- 6032** Goodyear 1 d. deep blue on blued horizontally laid paper, an unused top marginal example, Plate III position 27 (pos. 3 on sheet of 12), a fresh and fine example in a deep shade, variety: "Imperforate Between Stamp and Margin", large part og. An exceptional and extremely rare stamp.

Provenance: Collection 'Goodyear', Robson Lowe, London, 8 June 1993, lot 130.

18 var

*

1'200 (€ 1'080)

ex 6033

- 6033** 1900c.: Forgeries (3) of the Goodyear 1 d. all on horizontally laid paper, an unused example and two used examples one in a pale and the other in a deep shade, cancelled by forged 'Mafeking / C.G.H.' datestamps (May 11). The stamps were already in demand as soon as the Siege was lifted and the first forgeries were, allegedly, produced in time to be sold to Troops returning home to Britain on leave.

17+ 18
Forgeries

75 (€ 70)



6034



6035

- 6034** **Narrow Setting** Baden-Powell 3 d. pale blue on blued horizontally laid paper, a fine used example on small piece tied by complete strike of MAFEKING / C.G.H. datestamp (May 10) in black. Superb Gi = £ 475.
- 6035** Baden-Powell 3 d. pale blue on blued horizontally laid paper, a fine used sheet marginal example on small piece of Telegram form tied by near complete strike of MAFEKING / C.G.H. datestamp (April 7) in black. Superb and an extremely early usage of this stamp. Signed Bloch "to the best of my knowledge is the earliest known date of use". Cert. Friedl (1981) Gi = £ 475.

Gibbons

Start price
in CHFStart price
approx. €

19

△

200

(€ 180)

19

△

250

(€ 225)



6036

- 6036** Baden-Powell 3 d. pale blue on blued horizontally laid paper, a used marginal block of nine (3 x 3) being three-quarters of the sheet of twelve subjects, positions 1-3/5-7/9-11, with full sheet margins on three sides, each stamp individually cancelled by MAFEKING / C.G.H. datestamps (May 12) in black. Note the 'Drawing Pin' in margin beneath position 11. Some sensible precautionary strengthening of perforations with hinges. A magnificent and extremely rare multiple for the connoisseur. An Exhibition piece Gi = £ 4'275++.
Provenance: Collection 'Goodyear', Robson Lowe, London, 8 June 1993, lot 154.

19

⊞

2'000

(€ 1'800)



General Baden-Powell



6037

Gibbons

Start price in CHF Start price approx. €

6037 Baden-Powell 3 d. pale blue on blued horizontally laid paper, an unused example, variety **"Reversed Design"** with mirror image, minor aging as to be expected, unused and without gum. Just one sheet of twelve subjects was printed, of which ten are currently known, seven of which are in used condition. An immensely rare stamp with just the 3 unused examples recorded, one of which was in the H. P. Manus Collection (1933) as lot 113 and the other, a marginal example from top of sheet, is housed in the collection of Her Majesty Queen Elizabeth II. A magnificent rarity of Cape, Scouting and British Colonial philately. Cert. BPA (1983) Gi = £ 100'000.

19a

(*)

25'000 (€ 22'500)



6038



6039

		Gibbons		Start price in CHF	Start price approx. €
6038	Baden-Powell 3 d. deep blue on horizontally laid blue paper, narrow Setting, a fine unused example in a deep shade, corner perf. crease, somewhat dried part og. Gi = £ 1'700.	20	*	250	(€ 225)
6039	Baden-Powell 3 d. deep blue on blue horizontally laid paper, a used example in a dark shade, minor bend from previous hinge not detracting from appearance, cancelled by upright MAFEKING / C.G.H. datestamp (May 1) in black, a most attractive example Gi = £ 425.	20		150	(€ 135)



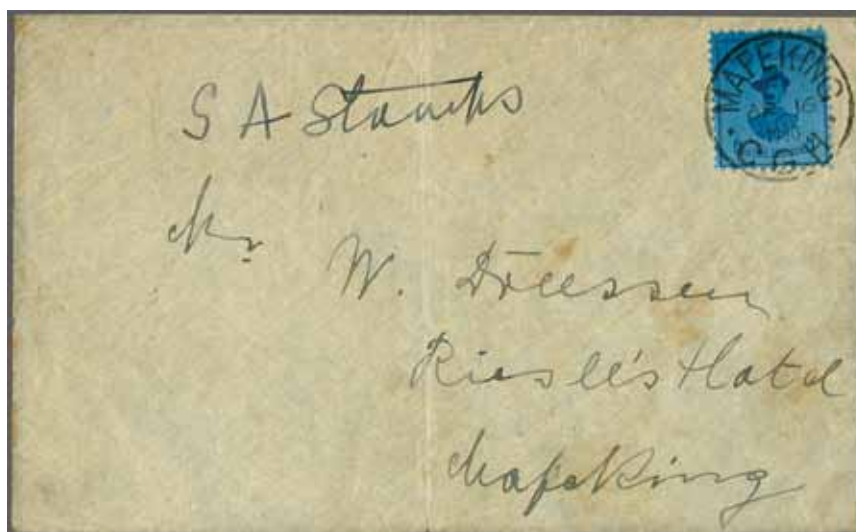
6040

6040	Baden-Powell 3 d. deep blue on blue horizontally laid paper, a used horizontal pair of good fresh colour, one or two slight surface white specks, lightly tied to piece by MAFEKING / C.G.H. datestamps (May 13) in black Gi = £ 850+.	20	△	250	(€ 225)
-------------	----------------------------------------------------------------------------------------------------------------------------------------------------------------------------------------------------------------------------------------	----	---	------------	---------



6041

6041	Baden-Powell 3 d. deep blue on blue horizontally laid paper, a used example of fine colour used on envelope mailed to 'Corporal Bailie, No. 2 Troop, B Squadron, Protectorate Regiment' tied by fine MAFEKING / C.G.H. datestamp (April 11) in black. Cover crease at left well away from the fine adhesive, a rare and attractive usage.	20	✉	2'000	(€ 1'800)
-------------	-------------------------------------------------------------------------------------------------------------------------------------------------------------------------------------------------------------------------------------------------------------------------------------------------------------------------------------------	----	---	--------------	-----------



6042

Gibbons

Start price
in CHF Start price
approx. €

- 6042** Baden-Powell 3 d. deep blue on blued horizontally laid paper, a used example on cover addressed to a civilian, 'Mr. W. Dreessen, Riesle's Hotel, Mafeking' tied by MAFEKING / C.G.H. datestamp (April 16) in black. Slight staining to envelope endorsed "S.A. Stamps" and typical vertical file fold well away from the adhesive. A scarce and most attractive cover.

20



1'500 (€ 1'350)



6043

- 6043** **Wide Setting** Baden-Powell 3 d. pale blue on blued horizontally laid paper, a used example, cancelled by MAFEKING / C.G.H. datestamp (May 12) in black. A fine stamp Gi = £ 1'200.

21

350 (€ 315)



6044

- 6044** Baden-Powell 3 d. pale blue on blued horizontally laid paper, a used example on Bechuanaland Protectorate O.H.M.S. envelope addressed to 'L.V. Guttenberg, C Troop, D Squadron, Protectorate Regiment, B.S.A. Fort', tied by MAFEKING / C.G.H. datestamp (April 13). The adhesive with some surface cracking but an extremely early usage of this adhesive on letter, typical crease in envelope due to method of carriage and partial flap fault, nevertheless attractive and very rare.

Provenance: Collection 'Goodyear', Robson Lowe, London, 8 June 1993, lot 192.

21



2'000 (€ 1'800)



General Baden-Powell sitting on sand bags watching a fight



6045



6046

		Gibbons		Start price in CHF	Start price approx. €
6045	Baden-Powell 3 d. pale blue on blued horizontally laid paper, an unused example with vertical line of marginal watermark, position 9 on the sheet of twelve subjects, showing pronounced late state of the "Cracked Plate" flaw running diagonally at the top of the stamp and "Circular Flaw" on the vignette with leaving a circular white line, perhaps caused by a moustache hair or eyelash on the glass, the flaw here touching the right ear, eye and moustache. Fresh colour and fine, large part og. An exceptional and very rare stamp. Cert. BPA (1993) Gi = £ 12'000+.				
	Provenance: Collection 'Goodyear', Robson Lowe, London, 8 June 1993, lot 179.	21 var	*	4'000	(€ 3'600)
6046	Baden-Powell 3 d. pale blue on blued horizontally laid paper, an unused example, position 9 on the sheet of twelve subjects, showing early state of the "Cracked Plate" flaw running diagonally at the top of the stamp, tiny corner bend not affecting the appearance, fresh colour and fine, large part og. A very rare stamp. Cert. A. Diena Gi = £ 12'000+.	21 var	*	4'000	(€ 3'600)



6047

Gibbons

Start price
in CHF

Start price
approx. €

- 6047** Baden-Powell 3 d. pale blue on blued horizontally laid paper, a used example, position 8 on the sheet of twelve, with diagonal "Cracked Plate" flaw running the full width of the stamp and showing the break to the outer vertical frame line clearly, cancelled by MAFEKING / C.G.H. datestamp (May 10) in black. Rare and very fine Gi = £ 1'200+.

21 var

400 (€ 360)



6048



6049

- 6048** Baden-Powell 3 d. pale blue on blued horizontally laid paper, a used example, position 7 on the sheet of twelve, with diagonal "Cracked Plate" flaw running the full width of the stamp at base and showing the break to the outer vertical frame line clearly, cancelled by MAFEKING / C.G.H. datestamp (May 11) in black. Corner bend not affecting the appearance of a rare stamp Gi = £ 1'200+.
- 6049** Baden-Powell 3 d. pale blue on blued horizontally laid paper, a used example, position 10 on the sheet of twelve, with diagonal "Cracked Plate" flaw running across the top of the stamp, cancelled by part MAFEKING / C.G.H. datestamp (May 2) leaving the flaw clear. Couple of white spots due to the photographic process but a fine stamp Gi = £ 1'200.

21 var

400 (€ 360)

21 var

300 (€ 270)



6050

- 6050** Baden-Powell 3 d. pale blue on blued horizontally laid paper, a used example, position 7 on the sheet of twelve, with diagonal "Cracked Plate" flaw running from the lower left of the stamp and showing the break to the outer vertical frame line clearly, tied to small piece cancelled by MAFEKING / C.G.H. datestamp (May 14) in black. One negligible tone spot on perforation at right, a fine stamp Gi = £ 1'200+.

21 var

△

400 (€ 360)



6051

Gibbons

Start price
in CHF Start price
approx. €

6051 Baden-Powell 3 d. pale blue on blue horizontally laid paper, a used block of six, corner marginal from left of the sheet of twelve subjects, positions 1-2 / 5-6 / 9-10, and horizontal pair, positions 7-8, with positions 9-10-7-8 showing the complete progression of the diagonal "Cracked Plate" flaw running across all four stamps, cancelled by individual MAFEKING / C.G.H. datestamps (May 12) leaving the flaw relatively clear. A magnificent and extremely rare multiple of great visual appeal $G_i = £ 9'600+$.

*Provenance: Maria de La Queillerie, Harmers, London, 18-19 May 1970, lot 529.
Collection 'Goodyear', Robson Lowe, London, 8 June 1993, lot 180.*

21+ 21 var



5'000 (€ 4'500)



6052



War Correspondent
Vere Stent

6052 Baden-Powell 3 d. deep blue on blue horizontally laid paper, a used example on cover addressed to 'Vere Stent Esq., Mafeking' tied by bold strike of MAFEKING / C.G.H. datestamp (April 14) in black. The envelope slightly trimmed at right and creased at lower right but a most interesting addressee - Vere Stent was both the Reuters & Cape Times War Correspondent and was later to become editor of the Pretoria News. An extremely rare stamp on letter.

22



3'000 (€ 2'700)

Vryburg

1899, Boer Occupation



6053

Gibbons

Start price
in CHF Start price
approx. €

- 6053** Cape 1/2 d. green surcharged 1/2 PENCE / Z.A.R. in black, an unused horizontal pair, of excellent colour, showing slight bounce doubling of the surcharge, fresh and fine, large part og. Cert. BPA (1982) Gi = £ 450+.

1

*

180 (€ 160)

6054

*"Italic Z"*

- 6054** Cape 1/2 d. green surcharged 1/2 PENCE / Z.A.R. in black, an unused block of fifteen (5 x 3), of vibrant colour and showing variety on fifth stamp "Italic Z" and on sixth stamp "Surcharge 12 1/2 mm.", some minor natural gum bends and occasional hinges to prevent splitting, one leaving inconsequential perforation stain, otherwise remarkably fresh and very fine for such a multiple (just 2'400 stamps, 10 sheets, were surcharged), large part or unmounted og. Gi = £ 7'425+.

1+ 1a+ 1b 田*/**

2'000 (€ 1'800)

6055

- 6055** Cape 1 d. rose surcharged 1 PENCE / Z.A.R. in black, a used example with variety "Italic Z", cancelled by Vryburg cds in black. A rare stamp. Cert. BPA (1976) Gi = £ 900.

2a

250 (€ 225)



Main Street Vryburg during the Boer War



6056

Gibbons

Start price in CHF Start price approx. €

6056 Cape 6 d. mauve surcharged 2 PENCE / Z.A.R. in black, an unused block of twenty (5 x 4), of brilliant colour, fifteenth stamp showing the variety "Italic Z", superb but for rounded corner perforations at top right and lower left, fresh and remarkably fine for such a multiple, tiny ink mark on reverse of one stamp otherwise superb og. with most of the stamps, including the variety, being unmounted og. Just 1'440 stamps, 6 sheets, were issued. A great rarity of South African philately in stunning condition. Cert. BPA (2019) Gi = £ 55'000+.

3+ 3a 田*/**

15'000 (€ 13'500)



6057

Gibbons

Start price in CHF Start price approx. €

6057 Cape 2½ d. blue surcharged 2½ PENCE / Z.A.R. in black, an unused example in a pale shade, minor gum bend not affecting appearance, fine, large part og. A rare stamp, with just 480 examples, 2 sheets, issued. Cert. BPA Gi = £ 1'700.

4

*

500 (€ 450)



General Post Office in Johannesburg



6058

6058 Cape surcharged "Z.A.R.", the set of four values, ½ d. green, 1 d. rose, 2 d. on 6 d. mauve and 2½ d. pale blue all used on 1899 cover sent registered to the Postmaster in Johannesburg, each stamp tied by VRYBURG datestamps (Nov 28) in black. Schweizer-Reneke (Jan 6) and Johannesburg arrival on reverse (Jan 11, 1900). Pencil line from registration touches the 1 d. and vertical creasing to the envelope at left but a fine full set franking Gi = £ 1'100+.

1+ 2+ 3+ 4



400 (€ 360)

1900, British Re-occupation



6059

Gibbons

Start price
in CHFStart price
approx. €

- 6059** Transvaal ½ d. green handstamped "V.R. / SPECIAL / POST" reading up in black, a superb used example tied 'par complaisance' to small piece by 'VRYBURG / B.B.' cds (May 16 / 19) in black. Pencil manuscript '1900' at top. An exceptional example of a very rare stamp of which just 100 examples were issued. Cert. RPSL (2005) Gi = £ 3'500.

11

△

1'000

(€ 900)



6060

- 6060** Transvaal 1 d. rose-red & green handstamped "V.R. / SPECIAL / POST" reading up in black, a superb used example tied 'par complaisance' to small piece by 'VRYBURG / B.B.' cds (May 16 / 19) in black. Pencil manuscript '2750' at top. An exceptional example of a very rare stamp of which just 60 examples were issued. Cert. RPSL (2005) Gi = £ 6'000.

12

△

2'000

(€ 1'800)



6061

- 6061** Cape, 1 d. rose-red, used on small piece tied by VRYBURG / C.G.H. datestamp with manuscript "C.St.Q." in black ink in lieu of the date, the initials of the Military Intelligence Officer in charge of the Post Office, Clifford St. Quintin. Rare and very fine. Cert. RPSL (2005).

Note: On the re-occupation of Vryburg, from an unknown source a small number of copies of the Cape ½ d. and 1 d. were discovered. These were used to frank correspondence and are found cancelled by a VRYBURG / C.G.H. datestamp with initials placed in lieu of date. See Robson Lowe Encyclopaedia, Africa, page 127.

59

△

300

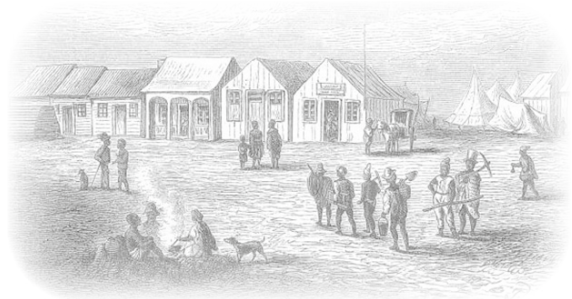
(€ 270)

Griqualand West

1877, G. W. overprints



6062



Kimberley Diamond Mines

- 6062** **Small (2½ mm.) Roman Capitals** Cape 1 d. carmine-red, wmk. CC, optd. 'G.W.' in black, a fine unused block of four, of fresh vibrant colour, marginal from base of sheet, with slight horizontal crease on upper pair and one or two faint tone spots on gum of lower pair mentioned for full accuracy, otherwise fine, with large part og. An exceedingly rare stamp in a multiple. A major exhibition item of the issue. Cert. BPA (2019) Gi = £ 3'000+. *Provenance: Robson Lowe, 19 Sept 1990, lot 1244.*

Gibbons

Start price
in CHF Start price
approx. €

2 田* **1'000** (€ 900)



6063



6064

- 6063** Cape 4 d. blue, wmk. CC, optd. 'G.W.' in red, a fine unused horizontal pair, of excellent colour, fresh and very fine, large part og. A very rare stamp in a multiple. Cert. BPA (1975) Gi = £ 800+. *Provenance: Robson Lowe, 19 Sept 1990, lot 1245.*
- 6064** Cape 4 d. blue, variety 'wmk. CC inverted', optd. 'G.W.' in red, a fine unused example centred to lower left, fresh and very fine, large part og. A very rare stamp. Cert. BPA (2009) Gi = £ 1'300.

3 * **300** (€ 270)

3w * **300** (€ 270)



Diamond Miners in Kimberley



6065

Gibbons

Start price
in CHF Start price
approx. €

6065

First Printing Overprinted "G" in 7 upright Types Cape 1 d. carmine-red optd. "G" in black, a horizontal strip of three (all Type 1a) and a block of six (Types 3-3-2 / 4-4-5, sheet positions 45-47/ 51-53) and 1 s. green optd. "G" in red (Type 6) used with March 1877 1 d. carmine-red optd. "G.W." in black in a horizontal pair and a remarkable strip of six together with single 4 d. blue optd. "G.W." in red; all tied to 1877 registered cover to Antwerp by double arc KIMBERLEY datestamps (March 13) in black. Five stamps removed with "Registered / Cape Town. Cape Colony" datestamp at right (March 19) and "Registered / London" transit on front in red and reverse with Antwerp arrival cds's (April 14). A few imperfections but a quite extraordinary and spectacular Griqualand franking - the letter almost certainly containing rough diamonds sent to Antwerp for cutting.

Note: This cover was responsible for Stanley Gibbons listing the 1877/78 issues from March 1877 rather than April (letter from the late Alan Drysdall to David Aggersburg attached). It is, therefore, the earliest known usage of the "G" overprints on cover and, as far as we are aware, the sole recorded usage of both values of the "G.W." provisionals used with the "G" overprinted issue.

2+ 3+ 5a+
5b+ 5c+ 5d+
5e+ 9f



1'500 (€ 1'350)

1877/79, 'G' overprints



Emil Burmester's shop on Adderley Street, Cape Town



6066



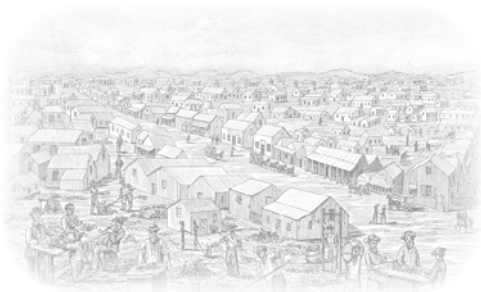
6067

- 6066** First Printing Overprinted "G" in 7 upright Types 1877: Cape 4 d. dull blue optd. "G" in red, Type 3, used on 1877 cover, with complete contents dated Dec 3, to Emil Burmester in Cape Town tied by double arc KIMBERLEY datestamp in black (Dec 10). 'Cape Town / Cape Colony' arrival cds (Dec 17) at right. Some minor edge wear but a fine and scarce cover.
- 6067** Cape 4 d. dull blue optd. "G" in red, Type 6, used on 1878 cover, with complete contents dated April 15, to Emil Burmester in Cape Town tied by double arc KIMBERLEY datestamp in black. 'Cape Town / Cape Colony' arrival cds (May 8) at alongside. Some minor aging on perforations but a scarce cover.

Gibbons		Start price in CHF	Start price approx. €
7c	✉	300	(€ 270)
7f	✉	300	(€ 270)



6068



The Town of Kimberley

- 6068** Cape 6 d. deep lilac optd. "G" in red, Type 3, a used example tied to 1880 cover to Rothwell, Leeds, England tied by double arc KIMBERLEY cds and by 'Cape Town / Cape Colony' transit cds (Oct 28). Reverse with Leeds arrival cds (Nov 24) in black. File fold above adhesive but a scarce usage.
- 6069** Collection with Cape ½ d. grey-black optd. "G" in red with Types 1a-6 represented by unused examples (4, Type 5 with cert.) and used examples (3); 1 d. carmine-red optd. "G" in black with Types 1a-6 used; 4 d. blue optd. "G" in red with Types 1a-6 used (Type 6 with cert.); 4 d. blue without frameline optd. "G" in red with Types 1a-6 used; 6 d. deep lilac optd. "G" in red with Type 2 unused and Types 1a-6 used; 1 s. green optd. "G" in red with Types 1a-6 used and additional Type 3; 5 s. orange optd. "G" in red with Types 1a-6 used. A fine group collected by a serious student of philately in much above average condition Gi = £ 4'750+.

8c	✉	300	(€ 270)
4a/4f-10a/10f		750	(€ 675)



6070

Gibbons

Start price	Start price
in CHF	approx. €

- 6070** **Second Printing Overprinted "G" in 9 upright or italic Types 1878:** Cape 1 d. carmine-red, wmk. CC, optd. italic "G" in black, an unused horizontal pair from the right pane of 60, Types 12a and 12b, positions 43-44, fresh and very fine, large part og. A rare positional piece. Cert. RPSL (1968) Gi = £ 240+.

Provenance: Collection G.H. Jonkers, Robson Lowe, London, 22 July 1986, lot 171. Robson Lowe, London, 19 Sept 1990, lot 1259.

11g

*

250 (€ 225)

6071

- 6071** Cape 4 d. dull blue optd. "G" in black, Type 12, used on 1878 cover, with complete contents dated Feb 19, to Emil Burmester in Cape Town tied by double arc KIMBERLEY datestamp in black (Feb 19). 'Cape Town / Cape Colony' arrival cds (Feb 25) at left. Reverse with sender's 'Thos. R. Hellaby / Kimberley / South Africa / Law, Commission & General Agent' cachet in violet. Some minor aging to perforations at right and edge wear but a fine and scarce cover.

12g

**300** (€ 270)

6072

- 6072** Cape 6 d. deep lilac, wmk. Crown CC, perf. 14, optd. "G" (Type 11) in black, a single example and a horizontal pair used on small piece, lightly cancelled in black. The single with a small corner crease at upper right but a scarce usage. Cert. BPA (2019) Gi = £ 450+.

13f

**150** (€ 135)

- 6073** Collection of the issue with Cape 1 d. carmine-red, optd. "G" in black with unused examples of Types 7, 8, 10 and 13 and used examples of Types 9, 11 and 12; 4 d. blue optd. in black with eight used examples (Types 6-13), 6 d. deep lilac optd. in black with eight used examples (Types 6-11 and two examples of Type 13), with Types 6 and two examples of Type 13 each with RPSL certificates. An exceptional lot from this difficult issue, collected by a serious student of classic philately Gi = £ 2'725.

11b/13g

*

750 (€ 675)



6074

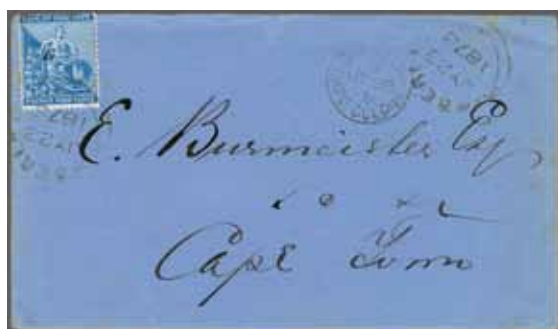
Gibbons

Start price in CHF Start price approx. €

- 6074** **Overprinted with small 'G' in 2 Types** 1878: Cape ½ d. grey-black, wmk. CC, optd. upright "G" in red, variety "Overprint Inverted", an extraordinary complete unused pane of 60 from the lower right pane, with full COLONIES watermark in margin at top, one stamp with small closed tear and lower row and margin at base with minor horizontal bends, and with printer's guide lines and Serial Number 43. The block with varieties of the overprint throughout largely caused by under-inking. Fresh and very fine, with large part og. and the majority unmounted og. A remarkable and rare surviving multiple Gi = £ 1'740+.

14a 田*/**

600 (€ 540)



6075



6076

Gibbons

Start price
in CHFStart price
approx. €

- 6075** Cape 4 d. dull blue optd. italic "G" in black, Type 16, used on 1878 cover, with complete contents dated July 22, to Emil Burmeister in Cape Town tied by KIMBERLEY datestamp in black (July 23) with further strike at right. 'Cape Town / Cape Colony' arrival cds (July 30) at right. Some minor aging on perforations and slight closed tear at top of envelope but a scarce cover.

21

**300**

(€ 270)

- 6076** Cape 4 d. dull blue optd. "G" in black, Type 15, used on 1878 cover, with complete contents dated August 21, to Emil Burmeister in Cape Town tied by KIMBERLEY datestamp in black (Aug 22). 'Cape Town / Cape Colony' arrival cds (Aug 27) at left. Some minor aging and fault on perforations but also containing the sender, Thos. Hellaby's, new business cards: one as a Law, Commission and General Agent, the other as a Debt Recovery Office, together with a flyer advertising his skills as a 'Trade Protector' for 'information as to the status of individuals' in the Goldfields. A scarce and most interesting cover.

21

**350**

(€ 315)

- 6077** Collection on leaves with ½ d. grey-black optd. "G" in red, unused and unused with opt. Inverted, ½ d. grey-black opt. Type 16 with unused example, opt. inverted used, 'Overprint Double' variety unused (2); ½ d. grey-black optd. in black unused (Gi 14d = £ 350), optd. in black inverted (Gi 14da = £ 375), optd. double in black and inverted in red unused (Gi 14db = £ 600) and same but with "G" in red Type 16 unused (Gi 14dc = £ 325); ½ d. optd. Type 16 in black used, in black inverted unused (Gi 15da = £ 170), optd. double in black and inverted in red unused (Gi = £ 325); 1 d. carmine-red with unused pair (cert.), used pairs and a block of four with mixed types, opt. inverted (6, incl. two pairs), opt double variety used, opt. double both inverted, one in red (3) unused, one with cert. (Gi 16d = £ 100 each), 1 d. carmine-red optd. Type 16 with unused (2), used pair with cert., inverted opt. varieties used (5), opt. double both inverted, one in red (3) unused - one with cert. (Gi 17d = £ 180 each), opt. double variety used (Gi 17b = £ 150) with cert., opt. double both inverted used (Gi 17c = £ 180), 4 d. with frame line (both types) used (Gi 18/19 = £ 525); 4 d. blue without frame line showing the listed varieties as above incl. opt. double both inverted used (Gi 20c = £ 450) with cert., 4 d. optd. in red used (both Types) and with inverted optd. in red (Gi 20da+21da = £ 270); 6 d. deep lilac used, both Types etc. A remarkably complete collection, condition varies but a rare group formed by a discerning collector (62 items).

14/23

**1'000**

(€ 900)



6078



6079

- 6078** **Second Printing. Overprinted with small 'G'** 1879: Cape ½ d. grey-black, optd. "G", Type 17, re-issued to Cape Post Offices after the Colonial merger, four examples used on 1882 cover from Aliwal North to Burghersdorp, tied by double arc ALI WAL NORTH datestamps in black. Reverse with 'Burghersdorp' arrival cds (Aug 21) in black. The stamps slightly off the edge of cover at top but a scarce and attractive usage. Cert. BPA (1991).

Provenance: Collection G.H. Jonkers, Robson Lowe, 22 July 1986, lot 227.

24

**300**

(€ 270)

- 6079** Cape 4 d. blue, optd. "G", Type 17, used on 1880 cover, with original contents, to Cape Town tied by double arc KIMBERLEY datestamp (Aug 12) in black, with fine 'Cape Town / Cape Colony' cds of arrival (Aug 17) alongside. Small closed tear at top and base of envelope but a fine and rare in-period franking.

26

**300**

(€ 270)



Emil Burmester (left)



6080



6081

Gibbons

Start price
in CHF Start price
approx. €

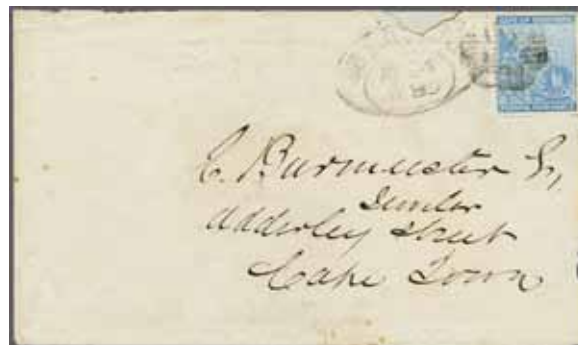
6080 Cape 4 d. dull blue optd. "G" in black, Type 17, used on 1879 cover, with complete contents in German dated November 22, to Emil Burmester in Cape Town tied by KIMBERLEY datestamp in black. 'Cape Town / Cape Colony' arrival cds (Nov 27) also tying the adhesive. Some minor aging on perforations but a scarce cover.

26 **300** (€ 270)

6081 Cape 4 d. dull blue optd. "G" in black, Type 17, used on 1880 cover, with complete contents dated March 1, to Emil Burmester in Cape Town tied by KIMBERLEY datestamp in black. 'Cape Town / Cape Colony' arrival cds (March 6) alongside. The writer states he is enclosing a draft. Some minor aging on perforations, edge wear and file fold away from adhesive but a scarce cover.

26 **250** (€ 225)

6082



6083

6082 Cape 4 d. dull blue optd. "G" in black, Type 17, used on 1880 cover, with complete contents dated April 3, to Emil Burmester in Cape Town tied by KIMBERLEY datestamp in black. 'Cape Town / Cape Colony' arrival cds (April 9) alongside. The writer states he is enclosing "second halves of banknote C7967, C7910 and C9557 each £5. I received your telegram yesterday, advert appeared this morning in the 'Advertiser' on Monday in 'Independent'. Shall telegraph when anything turns up". Some minor aging on perforations, edge wear and file fold but a scarce cover.

26 **250** (€ 225)

6083 Cape 4 d. dull blue optd. "G" in black, Type 17, used on 1880 cover from Du Toit's Span, to Emil Burmester in Cape Town tied by barred numeral obliterator (6 or 9) in black. Oval framed DU TOIT'S PAN datestamp at left (April 24) in black. 'Cape Town / Cape Colony' arrival cds (April 29) on reverse. Faults to envelope and stamp with perfs. stained at right, nevertheless a scarce cover.

26 **150** (€ 135)

6084 Collection of the six values optd. "G" in black, Type 17, with ½ d. grey-black unused, 1 d. carmine-red used, 1 d. with "Overprint Inverted" and "Overprint Double" varieties used; 4 d. blue used (10 examples) incl. a block of four and a strip of five, "Overprint Double" variety used (ex Jonkers, lot 197, cert. RPSL); 6 d. violet used (2) and "Overprint Inverted" variety used (2) and "Overprint Double" variety used; 1 s. green used (2) and "Overprint Double" variety used; 5 s. orange used. A fine collection Gi = £ 1'050+.

24/29 **200** (€ 180)

6085 **Revenue Stamps**, 1879, the engraved high values in blocks of four unused, 5 s. orange, £ 1 claret and £ 5 deep blue; all fresh and very fine, superb og. or unmounted og. (Barefoot 68, 70, 71).

120 (€ 110)

Natal

1857/61, Embossed Issues on coloured paper



6086



Arthur Hind

Gibbons

Start price	Start price
in CHF	approx. €

- 6086** 3 d. rose, the fine used vertical tête-bêche pair, of excellent impression and huge margins all round for this rare stamp, each impression cancelled lightly by numeral "1" in bars obliterator of Pietermaritzburg in black. An outstanding and famous pair, now safely removed from the original backing piece which accompanies the lot. Just four examples are known: one with heavy manuscript pen cross cancellation, another with two Crown cancels and the third a shoe-shaped defective example offered some time ago at \$ 39'000 by Argyll Etkin in Johannesburg. **One of the greatest of all British Colonial rarities in absolutely superlative condition.** Cert. RPSL (1998), BPA (2019) Scott 1a = \$ 55'000/Gi = £ 50'000.
Provenance: Collection Arthur Hind, Harmers, London, 11-14 June 1934, lot 543.

4a

25'000 (€ 22'500)



6087



6088

Gibbons

Start price in CHF	Start price approx. €
-----------------------	--------------------------

- 6087** 3 d. rose, a fine used example with large margins all round, clear impression in a bright shade for this issue, cancelled by "Crown / Natal" circular dateamp in blue (April 3). Slight unobtrusive vertical crease and backed on to paper. Rare and particularly fine. Cert. RPSL (1965) Gi = £ 400.

Provenance: Collection C. R. Reynolds. Harmers, London, 21 Sept 1994, lot 1541.

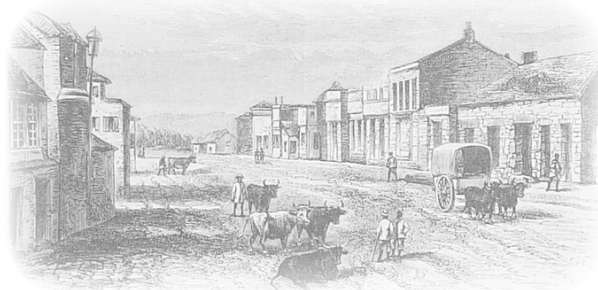
- 6088** 6 d. green, a fine used example with large even margins all round, good impression, cancelled by "Crown / Natal" circular dateamp in blue (Sept 22). A very rare stamp. Signed W. Brandes. Cert. APS (1976) Scott 2 = \$ 2'000/Gi = £ 1'100.

4

200 (€ 180)

5

350 (€ 315)



Church Street, Pietermaritzburg



6089

- 6089** 6 d. green, the magnificent used example, roughly separated, leaving top margin clear and three huge margins surrounding, tied to May 9, 1859 entire letter from Pietermaritzburg to London, addressed to the Lord Bishop of Cape Town, by oval framed POST OFFICE / P.M.BURG handstamp in black. Obverse with handstruck "6d" applied in black and London arrival cds in red (June 27), reverse with CAPE PACKET / DEVONPORT cds of landing (June 26) in black. A rare entire and a particularly attractive cover for this issue. Cert. BPA (2007).

Note: The contents read: "My Dear Lord, I have not of course, said anything to my friends at home about a Bishopric in Zululand. If anything about it should be settled before next Mail, it would be a great favour if you would direct some person to write to my brother, John Mackenzie, 5 St. Andrews Sq., Edinburgh".

5



3'500 (€ 3'150)

1859, Recess from Perkins Bacon - Die and plate proofs



6090



6091

Gibbons

Start price
in CHF Start price
approx. €

- 6090** 1859: De La Rue engraved original Master Die Proof for the 6 d. value on thick card, of outstanding appearance and of great rarity. Sold together with a later 1862 Plate Proof in rose-red on star wmk. paper, notice the difference in the depth of shading on the Queen's right eye, some of which had been lost by the Plate Proof stage of the printing for the later issue. There are believed to be have been just six of the Die Proofs in black struck - one is housed in the collection of Her Majesty Queen Elizabeth II.

9 Proof

(*)

1'500 (€ 1'350)

- 6091** 1862: De La Rue engraved original progressive Die Proof for the 3 d. value on thick card, of outstanding appearance with the corner tablets showing four dots instead of the 'circle in square' design eventually issued: the four lines forming the square yet to be added, a marvellous and extremely rare Proof.

Provenance: Stanley Gibbons, London, 5-6 March 1981, lot 490.

10 Proof

(*)

1'500 (€ 1'350)

6092



6094

- 6092** 3 d. blue, wmk. Small Star, an imperforate Proof block of four from lower left corner of the sheet, good margins all round, the impressions slightly misaligned, first stamp with inking flaw in value tablet at base, second stamp with tiny spot on Crown, light bends not detracting from the fine appearance of a most attractive multiple. De La Rue rarely used watermarked paper for Proofs and Trials.

Proof

田(*)

200 (€ 180)

6093



6095

- 6093** 1863/65: 1 d. rose, wmk. Crown CC, De La Rue imperforate Proof in a bright shade, ungummed, fresh and very fine. Scarce and most attractive.

21 Proof

(*)

250 (€ 225)

- 6094** De La Rue Imperforate Plate Proof for 6 d. value printed in black on thick card paper, a block of four with good to large margins all round, slightest of age stains on front otherwise an attractive and scarce multiple.

23/24 Proof

田(*)

250 (€ 225)

- 6095** 6 d. violet, wmk. Crown CC, De La Rue imperforate Proof in a bright shade, on lightly gummed medium paper, fresh and very fine. Scarce and most attractive.

24 Proof

(*)

250 (€ 225)

1859, Recess from Perkins Bacon - Issued Stamps



6096

Gibbons

Start price
in CHFStart price
approx. €

- 6096** 1859/60: 1 d. rose-red and 3 d. blue, no wmk. perf. 14, each in a used horizontal pair of good colour, lightly cancelled in black, fine and most attractive Gi = £ 280.

9+ 10

100

(€ 90)



6097



6098

- 6097** 3 d. blue, no wmk. perf. 14, a single example used on cover to Revd. Grout at Umsunduzi, care of George Cato in Durban, tied by oval framed POST OFFICE / P.M. BURG handstamp in black. A fine and attractive usage. George C. Cato (1814-1893), amongst many other endeavours was the Consul for Norway & Sweden in Natal.

Provenance: Collection Bill Hart, Cavendish, Derby, 25-26 June 1993, lot 112.

10

**120**

(€ 110)

- 6098** 1859: 6 d. blue, no wmk., perf. 14, horizontal pair used on 1867 cover to Cape Town endorsed 'By Golden Fleece' tied by bold strikes of "2" numeral obliterations and by DURBAN / Crown / NATAL cds (May 6) in black, with 'Cape Town / Cape Colony' arrival cds at left (May 15). File fold away from adhesives but an attractive cover.

10

**120**

(€ 110)



6099



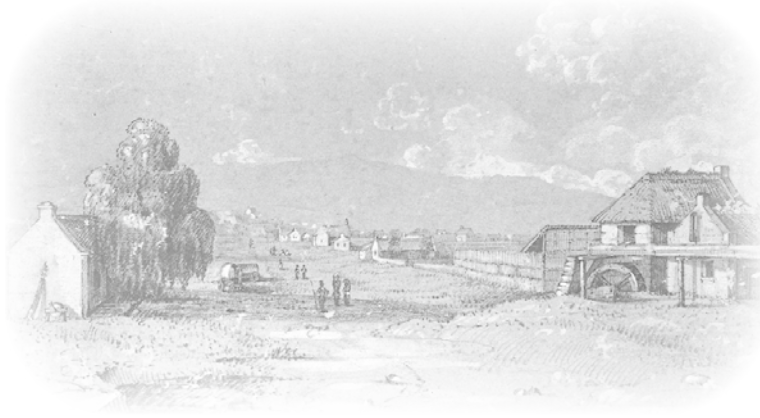
Bishop John William Colenso

- 6099** 1859/60: 3 d. blue, no wmk., perf. 14, a horizontal pair used on 1866 wrapper to Dr. Bleek in Cape Town, tied by '1' numeral obliterations in black. 'Pietermaritzburg / Natal' cds below and reverse with 'Cape Town / Cape Colony' cds (March 13) of receipt. Scarce late usage of the issue, the writing appears to be that of Bishop Colenso.

10

**150**

(€ 135)



View of Pietermaritzburg



6100

Gibbons

Start price in CHF Start price approx. €

- 6100** 3 d. blue, no wmk. perf. 14, the famous **block of four** used on 1867 cover to Birmingham, variety "**Vertically Imperforate Between**", with misalignment of the vertical perforations, tied in black with circular PIETERMARITZBURG / NATAL cds adjacent (June 5) and PAID / DEVONPORT / CAPE-PACKET of landing in red (July 23). Reverse with Birmingham arrival cds (July 24) in black. An astonishing block, see the Stanley Gibbons footnote regarding this cover which states "*No 10a is only known from a cover of 1867 franked with two such pairs*". The block is exceptional even where slightly over the edge of the envelope and the thin paper envelope with just one tiny opening tear at top. A remarkable and extremely rare cover for the connoisseur of Southern African philately. Cert. BPA (1987), BPA (2019) Gi = £ 26'000.

Note: The letters enclosed are from the addressee's brother stating that he is now farming and labouring, and residing with a Mr. Bucknall at his farm in Hartstone. The second letter is a request for £20 from Mr. Bucknall so that the two men can 'Crop Share'.

10a



7'500 (€ 6'750)



6101



6102



variety 'Double Impression'

6101 1861: 3 d. blue, no wmk. intermediate perf. 14-16, an unused vertical pair, marginal from right of sheet, of good colour, minimal trace of aging, large part og. A scarce multiple Gi = £ 700+.

Provenance: Tommy Allen.

6102 1861/62: 3 d. blue, no wmk., rough perf. 14 to 16, a used example with variety "Double Impression", clearly showing in the NATAL legend at top, lightly cancelled by "2" numeral obliterator of Durban in black. Rare and most unusual stamp. Cert. BPA (2019).

Gibbons		Start price in CHF	Start price approx. €
11	*	200	(€ 180)
12 var		250	(€ 225)



6103



6104

6103 6 d. grey, no wmk. rough perf. 14-16, an unused vertical pair, marginal from right of sheet, of good colour, large part og. A scarce multiple Gi = £ 525+.

Provenance: Tommy Allen.

6104 1862: 1 d. rose-red, wmk. Small Star, rough perf. 14-16, an unused vertical pair, marginal from right of sheet, in a delicate shade, fresh and fine, large part og. Rare in such excellent quality Gi = £ 340.

13	*	200	(€ 180)
15	*	150	(€ 135)



6105

6105 1863: 1 d. lake-red, thick paper, no wmk., perf. 13, an unused example in a deep shade, with manuscript "Specimen" in ink. Minor imperfections of no significance, very rare.

Provenance: Collection Bill Hart, Cavendish, Derby, 25-26 June 1993, lot 87.

18s	*	300	(€ 270)
-----	---	-----	---------



6106



6108

6106 1 d. carmine-red, thick paper, no wmk., perf. 13, a magnificent unused block of fifteen (3 x 5), of lovely rich colour, superb and fresh with large part or unmounted og. Whilst the provenance cannot be guaranteed, it is probable as there were three blocks exactly this size in the 'Mayfair Find' and this one was purchased via Tommy Allen. Rare *Gi* = £ 1'950+.
Provenance: 'Mayfair Find', Harmers, London, 9 Nov 1925, lots 63-65
Cornphila, sale 64, 1-6 June 1981, lot 920.

Gibbons		Start price in CHF	Start price approx. €
19	田*/**	500	(€ 450)



6107

6107 1863/65: 6 d. lilac, wmk. Crown CC, perf. 12½, a fine unused block of four, marginal from top of sheet, fresh and fine delicate colour, unobtrusive crease on upper pair, unused without gum. An attractive block *Gi* = £ 480.

6108 6 d. lilac, wmk. Crown CC, perf. 12½, a fine unused block of twelve (3 x 4), sheet marginal at left with CROWN in marginal wmk., fresh and fine and of lovely colour, large part dried og. A most attractive and scarce large multiple *Gi* = £ 1'400+.
Provenance: Tommy Allen.

23	田(*)	120	(€ 110)
23	田*	450	(€ 405)



6109

Gibbons

Start price
in CHF

Start price
approx. €

- 6109** 6 d. lilac, wmk. Crown CC, two used examples on 1865 cover to Canterbury, UK tied by "1" numeral obliterator in black with corresponding PIETER-MARITZBURG / Crown / NATAL cds of despatch at left (Oct 2) in black. Circular PAID / DEVONPORT / CAPE-PACKET cds in red also on obverse (Nov 16). Reverse with Canterbury cds (Nov 17). A fine cover.

Provenance: Collection Bill Hart, Cavendish, Derby, 25-26 June 1993, lot 566.

23



200 (€ 180)



Collins Street, Melbourne



6110

- 6110** 6 d. lilac, wmk. Crown CC, used horizontal strip of three on 1867 single rate registered cover to Melbourne, Australia endorsed 'via Mauritius' all tied by numeral "2" obliterations and by corresponding DURBAN / Crown / NATAL cds of despatch (March 21) in black with rare circular REGISTERED / Crown / NATAL handstamp at left. 'Melbourne' arrival cds in blue (May 11) on obverse. Small closed tear at base but a charming and rare cover to an unusual destination.

Provenance: Collection Bill Hart, Cavendish, Derby, 25-26 June 1993, lot 414.

23



500 (€ 450)

- 6111** 1859/65: The Chalon selection with Plate Proofs on watermarked paper for 1 d. carmine, 3 d. in blue (3) and 6 d. in rose; 1859 1 d. carmine in an unused block of four but upper pair with small perf. fault, large part og., 1861/62 rough perf. 3 d. blue unused (4, incl. a pair), 3 d. grey unused, 1863 thick paper 1 d. in both shades unused, 1863/65 6 d. violet unused (2) and two covers each bearing two 3 d. blue to Cape Town and Cradock (both ex Bill Hart, lot 114). An attractive group (17 items).

10+ 12+ 18+
19+ 22+ 24



300 (€ 270)

1867, Typographed by De La Rue



6112



De La Rue Comp

- 6112** De La Rue Die Proof for the 1 s. value, the completed design printed in black on glazed card covered by mica (slightly wrinkled) and surmounted by thick card, handstamped at top "Jan. 11, 1867" in black. Rare.

Gibbons

Start price
in CHFStart price
approx. €

25 Proof

(*)

500

(€ 450)

1869/70, Overprinted "Postage" by Keith & Co.



6113



6115

- 6113** 1869: 1 d. bright red, wmk. Crown CC, perf. 12½, an unused example optd. POSTAGE, Type 7a, fresh and very fine, large part og. Gi = £ 550.

27

*

200

(€ 180)



6114

- 6114** 6 d. violet, wmk. Crown CC, perf. 12½, optd. 'POSTAGE' Type 7a, First Setting, a horizontal pair used on 1873 cover from Pietermaritzburg to Leeds, tied by numeral "1" obliterations in black. GPO / NATAL cds below (May 16) and reverse with Leeds arrival cds (July 2). Some peripheral aging to adhesives at top right but a most attractive usage.
Provenance: Collection Bill Hart, Cavendish, Derby, 25-26 June 1993, lot 571.

30

✉

350

(€ 315)

- 6115** 1 d. bright red, wmk. Crown CC reversed, perf. 12½, optd. 'Postage.' in black, Type 7b (12¾ mm.), First Setting, an unused example of good colour and centering, part og. A scarce stamp Gi = £ 475.

33x

*

150

(€ 135)



6116

Gibbons

Start price
in CHF Start price
approx. €

- 6116** 6 d. blue, no wmk. perf. 14, optd. 'Postage.' Type 7b (12¾ mm.), Second Setting, a used example on cover front to Mrs. Windham in Grey Town tied by fair strike of oval framed POST OFFICE / P. M. BURG handstamp in black. The addressee Mrs. Windham, was the wife of Ashe (Smith) - Windham, who arrived in Natal in June 1855. In 1857 he was appointed Magistrate to the Umvoti Division in Natal and lived at Greytown. In 1864 due to a Zulu invasion scare, Windham was made commander of the Greytown Mounted Rifles
Gi = £ 700 off cover.

34 (✉) **250** (€ 225)



6117



6119

- 6117** 6 d. violet wmk. Crown CC, perf. 12½, optd. 'Postage.' in black, Type 7c (13¾ mm.), First Setting, an unused example of fresh colour, good centering for the issue and dried part og. A scarce stamp Gi = £ 650.

36 * **180** (€ 160)



6118

- 6118** 6 d. violet, wmk. Crown CC, perf. 12½, optd. 'Postage.' Type 7b, First Setting, a fine used example on 1873 cover tied by bold "11" numeral obliterator of Greytown in black. GREYTOWN / Crown / NATAL cds below (May 22) and 'Cape Town / Cape Colony' cds of arrival (June 4) alongside. A fine cover, addressed to Dr. Wilhelm H.I. Bleek (1827-1875), writer of 'Comparative Grammar of South African Languages' and coiner of the name 'Bantu' for the groups of languages spoken south of the Sahara.

36 ✉ **200** (€ 180)

- 6119** 1 d. rose, optd. 'Postage.' in black, Type 7d (14½-15½ mm.), First Setting, an unused example of good colour, gum bend on disturbed part og. but a very rare stamp. Cert. BPA (2007) Gi = £ 1'000.

Provenance: Collection W. Frazer, Spink, London, 25 March 2004.

45 * **200** (€ 180)



6120



Baron Philipp von Ferrary

Gibbons

Start price
in CHF Start price
approx. €

- 6120** 1 s. green, overprinted Type 7d (14½-15½), First Setting, the famous unused example in a deep rich shade, centred to upper left with straight edge at right, two slight gum cracks otherwise fresh and very fine, large part og. An exceptional example of an extremely rare stamp. Signed Sismondo. Cert. Brandon (1997), Peter Holcombe (1997) Gi = £ 29'000.
Provenance: Collection Baron Philipp von Ferrary, Druout, Paris, 14-16 June 1922, lot 449.
Collection W. Frazer, Spink, London, 25 March 2004, lot 551.

49

*

7'500 (€ 6'750)

6121



6122

- 6121** 3 d. blue, no wmk., perf. 14, optd. 'POSTAGE.' Type 7e, a fine unused vertical pair from the First Setting of good colour, some discolouration on lower stamp, large part og. Gi = £ 800.
- 6122** 6 d. violet, wmk. Crown CC, perf. 12½, optd. 'POSTAGE.' Type 7e, First Setting, two examples used on 1873 cover from Umhlali to Brighthampton, NY, USA cancelled by numeral obliterations in black with fair UMHLLALI / Crown / NATAL cds of despatch at right. Framed TOO LATE in black and manuscript "Insuff. Stamped 2d." at left. Reverse with Durban transit cds, London transit in red (May 23). On arrival struck with NEW YORK / 31 U.S. NOTES cds in black (June 4). A scarce Transatlantic usage.

52

*

200 (€ 180)

55

✉

300 (€ 270)



6123

Gibbons

Start price	Start price
in CHF	approx. €

- 6123** 1 s. green, wmk. Crown CC, perf. 14, optd. 'POSTAGE.' Type 7e, Second Setting, with unlisted variety "Overprint Double", cancelled by "2" numeral obliterator in black. The stamp with previous hinge thin but a rarity - unrecorded by Stanley Gibbons and, as far as we are aware, unique. Cert. BPA (1959) Gi = unpriced.

56 var

1'000 (€ 900)

- 6124** 1870: 1 s. green optd. 'Postage' in green, a fine unused example with large part og., together with a single franking on 1872 cover to Edinburgh tied by "3" numeral obliterator with VERULAM / Crown / NATAL cds at left (Oct 22). The cover ex the Bill Hart collection, a scarce pair.

59

✉*

120 (€ 110)*Shortmarket Street; Pietermaritzburg*

6125

- 6125** 1870/73: 1 d. bright red, wmk. Crown CC, perf. 12½, overprinted POSTAGE (Type 9) in black, a horizontal pair of fine colour used on 1873 cover from Murchison to Arthur Mesham at the Supreme Court in Pietermaritzburg, tied by scarce "39" numeral obliterations of Murchison on despatch. Reverse with Durban cds (Dec 4) and GPO / Natal cds in black (Dec 5). A charming and scarce cover.

Provenance: Collection Bill Hart, Cavendish, Derby, 25-26 June 1993, lot 150.

60

✉

200 (€ 180)



6126

Gibbons

Start price
in CHF Start price
approx. €

- 6126** 1870/73: 3 d. bright blue, wmk. Crown CC reversed, perf. 12½ overprinted POSTAGE (Type 9) in red, an unused block of nine, marginal from the base of sheet, of fresh colour, hinged for protection, large part og. A most attractive multiple Gi = £ 1'100+.

61x 田*/**

350 (€ 315)

6127



6128

- 6127** 1877: ½ d. on 1 d. dull rose (Type a), 1874 1 d. dull rose and 1872 3 d. bright blue optd. in red horizontal pair; all used on small cover to Germany, tied by "6" numeral obliterator in black with 'No. 6 PO / Natal' cds below (April 13) in black. London transit on front in red (May 16) and reverse with Durban cds, Ostswine cds and arrival. Opening tear at base but an unusual franking for the 7½d. rate.

61+ 66+ 85

**200** (€ 180)

- 6128** 1870/73: 3 d. bright blue optd. 'Postage' in red (2), used with 1874/78 1 d. dull rose in a strip of three, 4 d. brown and 1880 ½ d. blue-green all tied to registered 1882 cover to Halifax, Nova Scotia at 1/1½ d. rate, tied by Pietermaritzburg 'GPO / Natal' datestamps (Feb 27) in black with circular REGISTERED / NATAL in red. 'Registered / London' oval transit and reverse with 'Halifax / Canada' arrival (April 14). A charming four colour franking to an unusual destination.

Provenance: Collection Bill Hart, Cavendish, Derby, 25-26 June 1993, ex lot 418.

**150** (€ 135)

1874/99, Overprints, Watermarks, Proofs etc.



6129

Gibbons

Start price
in CHF Start price
approx. €

- 6129** 1874 (April): Locally overprinted POSTAGE in imitation of the De La Rue issue of 1873, 1 d. rose, a fine unused example of good colour and large part og. Scarce Gi = £ 375.

65

*

150 (€ 135)



6130

- 6130** 1874: 1 d. dull rose, a horizontal strip of six, used on 1887 cover to Southsea, tied by three strikes of LOWER TUGELA / NATAL datestamps (Kwa-Zulu Natal) in black (Aug 8). Backstamped 'Durban / Natal' cds (Aug 9). Readdressed on arrival in Portsmouth (Sept 7) to Portchester on the same day with Fareham cds of receipt (Sept 8).

66

✉

100 (€ 90)



6131

- 6131** 1874: De La Rue Plate Proof for 1 d. value in bright rose, a block of twelve (6 x 2) on surface glazed white paper, showing sheet margins at left and at right, each overprinted CANCELLED (13¼ x 2½ mm.) in black. Delightful and scarce.

67 Proof 田(*)

200 (€ 180)



6132

Gibbons

Start price	Start price
in CHF	approx. €

- 6132** 1874/99: 3 d. blue, wmk. Crown CC, a used example, variety perf. 14 x 12½, lightly cancelled in black. A rare and most elusive stamp. Cert. BPA (2019) Gi = £ 1'100.

68a

250 (€ 225)

6133

- 6133** 1877: De La Rue hand-painted Essay for proposed 4 d. value, imperforate on white stamp-sized paper applied to thick card, the painting in shades of mauve, reddish-violet and Chinese white painted over the original 6 d. Essay of 1874 (pictured in "The De La Rue Collection" edited by Frank Walton RDP in the centre of page 5003) previously overprinted CANCELLED in red; with changed corner ornaments and FOUR PENCE value painted over SIX PENCE. Further large scale hand-painted design for the lower left ornament in black and Chinese white below; handstamped 30 AUG 77 at upper right. One of the few examples of one Essay superimposed over another. Unique and beautiful.

Provenance: Collection Bill Hart, Cavendish, Derby, 25-26 June 1993, lot 170.

69 Essay

(*)

2'000 (€ 1'800)

6134

- 6134** 1874/78: 4 d. brown, imperforate Proof on white paper applied to card, overprinted CANCELLED (Samuel Type D7) in black. The card with manuscript 'Feb 1877' and printer's annotations. Fine and rare, ex the De La Rue archives - this example is illustrated in "The De La Rue Collection" edited by Frank Walton RDP on page 5006. Rare.

69 Proof

(*)

200 (€ 180)



6135

Gibbons

Start price in CHF Start price approx. €

6135 1873: De La Rue Die Proof for 6 d. value, printed in black on glazed white card, handstamped 'Oct. 3, 1873' and BEFORE HARDENING in black. Fine and scarce.

70 Proof (*)

200 (€ 180)



A 'Donald Currie' Steamer



6136

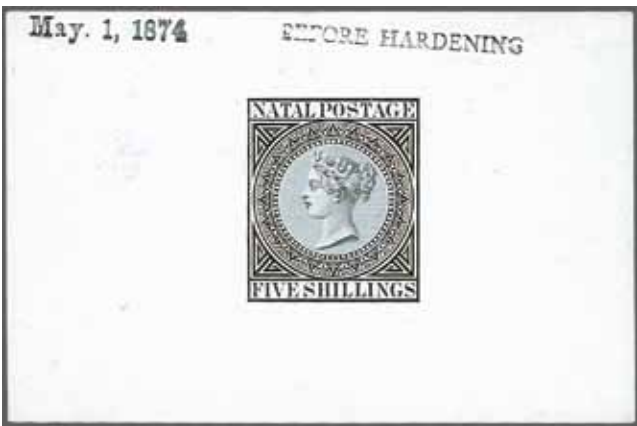
6136 1874: 6 d. reddish violet, wmk. Crown, perf. 14, a fine example used on combination cover from Pilgrim's Rest, Transvaal to London, overlapping Transvaal 1875 Celliers printing 6 d. deep blue (Gi 63), just touched at top cancelled by faint '14' numeral. Both stamps tied by numeral "1" in bars of Pietermaritzburg and by circular "London" (Dec 11) arrival cds in red. Reverse with 'G.P.O. / Natal' cds in black (Oct 24) and 'Durban / Crown / Natal' cds (Nov 1). The Natal 6 d. lifted for checking and hinged back into place. Cover #105 in the Jorgensen Transvaal census. An extremely rare combination usage from Transvaal through Natal, largely found only on this small correspondence addressed to Alcock in Holloway.

Note: The Alcock correspondence is almost the only one using the 'Natal Route' back to the UK on the 'Donald Currie' Line of Steamers. Many of the Alcock covers are damaged, for example the two in the Bill Hart collection, the one offered here is particularly fine for this correspondence.

70



2'000 (€ 1'800)



6137



6138

- 6137

1873: De La Rue Die Proof for 5 s. value, printed in black on glazed white card, handstamped 'May. 1, 1874' and BEFORE HARDENING in black. Fine and scarce.
- 6138

1874: 5 s. maroon, wmk. Crown CC sideways, perf. 15½ x 15, an unused example affixed to card optd. CANCELLED in blue (Samuel Type D7). A few nibbed perforations but very scarce, ex the De La Rue archives - a similar example is illustrated in "The De La Rue Collection" edited by Frank Walton RDP on page 5006. Rare.

Gibbons		Start price in CHF	Start price approx. €
71a Proof	(*)	200	(€ 180)
71a var	(*)	200	(€ 180)



6139

- 6139

1882/83: Pages from the De La Rue archives with initial part page with ½ d. dull green and 3 d. grey, each perforated 12 (unissued thus) and annotated alongside "Proposed Colour" and, alongside the ½ d. "being that established by the International Postal Convention for this duty", second page with "Natal Postage Stamps / Existing and proposed Schemes of Colours", dated at top Aug 28, 1883; with 1882 ½ d. and 1 d. rose, perf. 14 as issued with 1 d. annotated "Colour established by the International Postal Convention for this duty" and 3 d. bright blue imperforate; third page with "Existing Colours" 4 d. (deep) brown and 5 d. bright reddish violet and 5 s. maroon perf. 14 "these colours cannot be improved upon" and unissued 1 s. in orange, perf. 12, with "This is the colour the Colonial Secretary, in his letter of the 14th Aug. 1880, gave instructions for all future supplied of the 1/- postage stamps to be printed in". Ex the De La Rue archives - these are all illustrated in the "De La Rue Collection" edited by Frank Walton RDP on page 5008 and 5009. Rare and important group.

71+ 97/103			
Proofs	(*)	1'000	(€ 900)

1874/79, New Designs



6140

Gibbons

Start price
in CHF Start price
approx. €

- 6140** 1876: 6 d. violet, overprinted POSTAGE (Type 18, 14½ mm.) by Davis & Sons in black, an unused example of rich colour, variety "Overprint Inverted", unused without gum. A very scarce stamp. Cert. RPSL (1940) Gi = £ 750.
Provenance: Tommy Allen.

83b * **200** (€ 180)

6141



Captain Charles Pierson Cramer

- 6141** 1875/76: 6 d. violet optd. 'Postage' by Davis & Sons, used example on 1879 cover endorsed "*From Captain Cramer, on active service in Zululand*" to Ryde, Isle of Wight, tied in transit by "2" numeral obliterator in black with corresponding 'Durban / Natal' cds (June 28) in black. Ryde cds of arrival (Aug 9) alongside. Flap faults but very scarce: Captain Charles Pierson Cramer, 3rd Battalion 60th (King's Royal Rifle Corps), served with the regiment for the entire campaign including the relief of Eshowe. He was present at the battle of Gingindlovu, the advance to Port Durnford and at the second advance to Ulundi during the Zulu War.

83 ✉ **350** (€ 315)

6142

- 6142** 1876: 1 s. green, overprinted POSTAGE (Type 18, 14½ mm.) by Davis & Sons in black, an unused block of six of fresh colour, minute tone spot in margin only at upper right and lower left stamp with corner perf. detached, would make a superb block of four, large part og. with two stamps unmounted og. Signed Holcombe Gi = £ 840.

84 田* **200** (€ 180)



6143

- 6143

1877: Locally Surcharged ½ d. on 1 d. dull rose, an unused block of nine (3 x 3), with mixed surcharges, overprint Type a ('½' 4½ mm. high and straight foot to 2) on top row, Type e (small 2) on fourth stamp, Type c with '½' showing curled foot on fifth, sixth and eighth stamp, Type d ('½' 3½ mm. high and 2 with straight foot) on seventh and ninth stamps; fresh and fine, large part or unmounted og. A scarce multiple Gi = £ 860+.
- 6144

Locally Surcharged ½ d. on 1 d. dull rose, the group of nine examples with Type a unused, Type a pair showing overprint shifted to left, Type b unused, Type a/c in vertical unused pair, Type d with two unused examples together with a Type d used example; generally fine, a scarce group Gi = £ 800+.

Gibbons		Start price in CHF	Start price approx. €
85+ 87+			
88+ 90	田*/**	250	(€ 225)
85/88	*	150	(€ 135)



6145



6146

- 6145

1877/79: Locally surcharged ½ d. on 1 d. yellow, a fine unused example with variety: "Surcharge Double", fresh and fine, large part og. A scarce stamp. Cert. RPSL (1949) Gi = £ 375.
- 6146

Locally surcharged ½ d. on 1 d. yellow, a fine unused vertical strip of three with variety: "Surcharge Omitted" on third stamp, fresh colour, precautionary ancient hinges, part og. An extremely rare and most attractive strip. Cert. BPA (2019) Gi = £ 4'250.

91b	*	150	(€ 135)
91c	*	1'200	(€ 1'080)

We accept consignments of suitable rarities and collections or entire estates for our forthcoming auctions at any time.
Please do not hesitate to contact our Philatelic Experts to discuss further details for consignments. Absolute discretion is guaranteed.



6147



6148

Gibbons

Start price
in CHF Start price
approx. €

- 6147** Locally surcharged 1 d. on 6 d. rose, an unused example with variety: "Surcharge Applied Four Times", fresh colour and fine appearance, couple of light age spots on fine large part og. Cert. RPSL (2000) Gi = £ 500.

Provenance: Collection Jay Grace Walmsley.

93d * **200** (€ 180)

- 6148** Locally surcharged 1 d. on 6 d. rose, wmk. Crown CC reversed, an unused example with variety: "Surcharge Applied Four Times", fresh colour and fine appearance, couple of light age spots on fine large part og. Cert. BPA (1991) Gi = £ 500.

93dx **200** (€ 180)

- 6149** ½ d. on 1 d. yellow, unused examples (4) and an unused block of twelve, used examples (6) with varieties on most, incl. "Overprint Inverted" unused and used (2), two with certs. BPA, "Overprint Double" used (cert. RPSL) and a further example cancelled at Rorke's Drift, 'S' and 'T' of POSTAGE omitted varieties used and the latter variety also unused, the charming block of twelve with opt. shifted to left and of bright colour; 1 d. on 6 d. violet unused, 1 d. on 6 d. rose unused and a used example with variety "Overprint Double, One Inverted". Generally fine, a scarce group (15 items) Gi = £ 2'600+.

91/93 田*/** **400** (€ 360)



6150

- 6150** 1873: De La Rue Die Proof for ½ d. value, printed in black on glazed white card, handstamped '15 JUN 80' in blue and AFTER HARDENING in black, with manuscript "BS 1876/80" at left, corner clipped at upper right but scarce.

96 Proof (*) **120** (€ 110)

1882/95, Later Issues



6151

- 6151** 1885: ½ d. dull green, an unused example, affixed to small card, ex the De La Rue archives, overprinted SPECIMEN in green with red manuscript "240 set" alongside. Rare.

97a (*) **150** (€ 135)



6157



ex 6158



ex 6159

- 6157** 1887: Proof / Colour Trial of the 2 d. olive-green, Die I, on un-watermarked paper, perf. 14, fresh and very fine with large part og. Very rare.
- 6158** 1887/91: 2 d. olive-green Die I, 1888 1 s. orange optd. Postage and 1891 2½ d. on 4 d. brown and 1891 2½ d. bright blue, all fine unused with large part og., the 2 d. with SPECIMEN opt. in black, the 1 s. and both 2½ d. values handstamped SPECIMEN in violet (Type NA1). A scarce group Gi = £ 370.
- 6159** 1891 (April 22): Locally surcharged 2½ d. on 4 d. brown, with an unused example, an unused example with TWOPENCE variety and a used example centred to upper left, variety "Surcharge Inverted", this last rare. A scarce group Gi = £ 530+.

Gibbons

Start price in CHF Start price approx. €

106 Proof	*	350	(€ 315)
106s+ 108s+ 109s+ 113s	*	120	(€ 110)
109+ 109a+ 109d	*	150	(€ 135)



Emil Tamsen



6160

- 6160** 1891 (April 22): 2½ d. on 4 d. brown, three examples used on 1893 registered cover to Nylstroom, central stamp with variety "HALFPENN", lightly cancelled in blue. File fold away from adhesives and addressed to E.C. Tamsen RDP, nevertheless scarce Gi = £ 275+.

109b



100 (€ 90)



View of Antananarivo



6161

Gibbons

Start price in CHF Start price approx. €

- 6161** 1895: British Inland Mail. Covers carried on the 'Donald Currie' Line of Steamers from Vatamandry, Madagascar during the French Fleet's blockade of Tamatave. Combination covers (2) from Antananarivo to the Deutsche Bank in London, the earlier cover franked by British Inland Mail January 1895 rouletted 4 d. black on laid paper tied by BRITISH / MAIL / ANTANANARIVO cds in violet (June 12) with Natal 1891 2½ d. bright blue tied by Durban cds (July 30). Second cover, sent as a duplicate to ensure delivery, franked by March 1895 4 d. rose, perf. 12, cancelled by BRITISH / MAIL / ANTANANARIVO thimble cds in violet (July 9), with Natal 1891 2½ d. bright blue applied for onward transmission and tied by 'Durban' cds (July 30) in black. Reverse of each with London (Aug 26) arrival cds in red. Exceptional quality and a very rare matching pair: the service was only in use from January to 30 September 1895.

113+ (50+
58)



2'500 (€ 2'250)



6162

Gibbons

Start price in CHF Start price approx. €

- 6162** 1895 (March 12): ½ d. on 6 d. violet, wmk. Crown CC reversed, an unused horizontal strip of five, each stamp handstamped SPECIMEN in violet (Type NA2), fresh colour and superb large part og. A rare multiple Gi = £ 300+.
- 6163** 1895 (March 18): HALF on 1 d. deep rose, a collection on leaves with handstamped SPECIMEN in violet on single example and on a horizontal strip of three, an unused pane of 60 from Plate 3, Second Setting with five examples of 'H' with longer left limb, and the broken "A" variety (five examples), also a spectacular registered cover to Danzig with un-surcharged 1 d. rose and eleven HALF on 1 d. rose.

114s

*

120 (€ 110)

125

田*

150 (€ 135)



Ladysmith's Town Hall
showing damage to the tower during the siege



ex 6164

- 6164** **Siege of Ladysmith 1900:** Covers (3), all stampless, with Feb 15 cover addressed to the 'Times' correspondent Lionel James, struck with despatch and arrival cds of LADYSMITH / NATAL in black, Feb 26 cover with same cds and two line 'LADYSMITH SIEGE POST OFFICE / Feb 26th 1900' in blue, and third cover being an OHMS blue envelope to 'Martitzburg', Natal addressed to the Army Paymaster sent on March 1st once the Siege had been raised.



150 (€ 135)

1902/09, Edward VII



6165

Gibbons

Start price in CHF Start price approx. €

6165 1901: De La Rue unadopted Essays, imperforate on Crown CA paper, TWO SHILLINGS on 1874 5 s. printed in orange-yellow and TWO SHILLINGS AND SIXPENCE on 5 s. printed in violet, each with large part og. For an example of these and two other proposed Essays see "The De La Rue Collection" edited by Frank Walton, page 5016. The Essays were discontinued due to the death of Queen Victoria and ten days later the new duty plates with Edward VII were proposed. Rare and most attractive.
Provenance: Collection Bill Hart, Cavendish, Derby, 25-26 June 1993, lot 247.

Essays * **350** (€ 315)



6166



6167

6166 De La Rue unadopted Essays, imperforate on Crown CA paper, with THREE HALFPENCE on 1882 6 d. printed in grey, FIVE PENCE on 1882 6 d. printed in red-brown, TWO SHILLINGS on 1874 5 s. printed in orange-yellow and TWO SHILLINGS AND SIXPENCE on 5 s. printed in violet, all on Appendix sheet from the De La Rue archives dated 20 MAY 1901 in blue at top and with the original notations from the page. Illustrated in "The De La Rue Collection" edited by Frank Walton, on page 5016. The Essays were discontinued due to the death of Queen Victoria and ten days later the new duty plates with Edward VII were proposed. Rare and most attractive.

6167 1902/06: Essays from the De La Rue records, sheet headed "Appendix C" and dated "28 June 1906" at top, with Imperforate 1½ d. values (5) all in unissued colours of purple & olive-yellow, purple & green, purple & red-brown, green & olive-yellow and green & yellow-brown; and imperforate 5 s. values in sepia & mauve, olive-yellow & mauve, deep green & green and purple & dull green, this last slightly rubbed, the balance in immaculate and delightful condition, the nine Essays were produced at the request of the Natal Govt. as Essays for doubly-fugitive ink to be used in the future to prevent the stamp's re-use. Illustrated in "The De La Rue Collection" edited by Frank Walton RDP on page 5026. Unique and most attractive.
Provenance: Grosvenor, London, 15-16 May 2003, lot 1217.

Essays (*) **1'000** (€ 900)

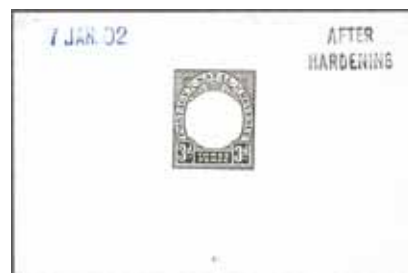
129+ 140
Essays (*) **1'500** (€ 1'350)



6168



6169



6170

6168 1902: De La Rue Die Proof for ½ d. value printed in black on glazed white card, dated '11 JAN. 02' in blue and handstamped BEFORE / HARDENING in black at right. Fine and scarce.

Gibbons

Start price
in CHFStart price
approx. €

127 Proof

(*)

150

(€ 135)

6169 De La Rue Master Die Proof for 1½ d. value, Frame only, printed in black on glazed white card, with '22 JAN. 02' in blue and handstamped AFTER / HARDENING in black at right. Slight scuff at top but fine and scarce.

129 Proof

(*)

180

(€ 160)

6170 De La Rue Master Die Proof for 3 d. value, Frame only, printed in black on glazed white card, with '7 JAN. 02' in blue and handstamped AFTER / HARDENING in black at right. Slight scuff at top but scarce.

132 Proof

(*)

180

(€ 160)



6171



6172



6173

6171 De La Rue Master Die Proof for 4 d. value, Frame only, printed in black on glazed white card, with '28 JAN. 02' in blue and handstamped BEFORE / HARDENING in black at right. Fine and scarce.

133 Proof

(*)

200

(€ 180)

6172 De La Rue Master Die Proof for 2 s. value, Frame only, printed in black on glazed white card, with '24 FEB. 02' in blue and handstamped BEFORE / HARDENING in black at right. Fine and scarce.

Provenance: Phillips, London, 2 April 1992, lot 361.

137 Proof

(*)

200

(€ 180)

6173 De La Rue Master Die Proof for 4 s. value, Frame only, printed in black on glazed white card, dated '1 MAR. 02' in blue and handstamped BEFORE / HARDENING in black at right. Couple of tiny scuffs, fine and scarce.

139 Proof

(*)

200

(€ 180)



6174



6175

6174 De La Rue Master Die Proof, Head Plate only, printed in black on glazed white card, dated '12 FEB. 02' in blue and handstamped BEFORE / HARDENING in black at right. Fine and scarce.

127/139
Proof

(*)

200

(€ 180)

6175 1901/02: De La Rue Master Die Proof for 'Postage / Revenue' issue, complete but for value tablets at base, printed in black on glazed white card, dated '3 DEC. 01' in blue and handstamped BEFORE / HARDENING in black at right. Fine and very scarce.

127/139
Proof

(*)

250

(€ 225)



6176

Gibbons	Start price in CHF	Start price approx. €
127s/139s var	(*)	150 (€ 135)

6176 1902/03: The definitive set of thirteen to 4 s. deep rose and maize, all overprinted SPECIMEN in black, further overprinted upon receipt from the UPU by a Portuguese Colony with ULTRAMAR in violet, unused without gum. Imperfections and aging due to their original storage but rare.



6177

140/145b+ 169/171 Essays	(*)	2'000 (€ 1'800)
--------------------------------	-----	-----------------

6177 1902/07: Essays from the De La Rue records, two sheets dated "27 February 1907 / Natal Reg. 89/05." at top, with Imperforate 5 s. values (7) in differing colours and annotated in manuscript alongside: 5 s. green & red (as issued in 1907 but the duty was on yellow paper), 5 s. in purple & chocolate-brown, 5 s. in grey-black & blue (as used for the 1902 £ 1), second half of the now divided sheet with 5 s. in green & violet (annotated £ 1.10 s.), 5 s. in mauve & black (annotated £ 5), 5 s. in green & orange (as used for the £ 10), 5 s. in purple & green (annotated £ 20); the seven Essays were produced at the request of the Natal Govt. as Essays for doubly-fugitive ink to be used in the future to prevent the stamp's re-use. Illustrated in "The De La Rue Collection" edited by Frank Walton RDP on page 5027. Unique and breathtakingly attractive.
Provenance: Stanley Gibbons, London, 6 March 1981, lot 494.



6178



6179



6180

- 6178** 1901/02: De La Rue Master Die Proof for 'Postage / Revenue' issue, complete but for value tablets at base, printed in black on glazed white card, dated '18 DEC.01' in blue and handstamped BEFORE / HARDENING in black at right. Fine and very scarce.
- 6179** 1902: De La Rue Master Die Proof for £ 5 value, Frame only, printed in black on glazed white card, with '1 MAY. 02' in blue and handstamped AFTER / HARDENING in black at right. Fine and scarce.
- 6180** De La Rue Master Die Proof for the £ 10 value, Frame only, printed in black on glazed white card, dated '8 MAY. 02' in blue at top and struck with BEFORE / HARDENING in black. Slight scuff at left but scarce.

Gibbons		Start price in CHF	Start price approx. €
140/145b Proof	(*)	250	(€ 225)
144 Proof	(*)	250	(€ 225)
145b Proof	(*)	250	(€ 225)



6181



6182



6183

- 6181** 1902/03: £ 10 green & orange, an unused example overprinted SPECIMEN in black, fresh and fine, superb og. Rare. Signed Raybaudi Gi = £ 450.
- 6182** £ 20 red & green, an unused example overprinted SPECIMEN in black, fresh and fine, superb og. Rare. Signed Raybaudi Gi = £ 650.
- 6183** £ 10 green & orange and £ 20 red & green, unused examples, each overprinted SPECIMEN in black and also overprinted upon receipt from the UPU by a Portuguese Colony with ULTRAMAR in violet, unused without gum. Imperfections and aging due to their original storage but rare.

145as	*	150	(€ 135)
145bs	*	200	(€ 180)
145as+ 145bs var	(*)	200	(€ 180)



6184



ex 6185



6186

- 6184** £ 10 green & orange and £ 20 red & green, unused examples, each overprinted SPECIMEN in black and also overprinted upon receipt from the UPU by a Portuguese Colony with ULTRAMAR in violet, unused without gum. Imperfections and aging due to their original storage but rare.
- 6185** 1902: 5 s dull blue & rose, 10 s. deep rose & chocolate and £ 1 black & bright blue, unused examples, slightest of rubs on £ 1 otherwise all fresh and fine, large part og. Gi = £ 545.
- 6186** Watermark CC, 5 s. dull blue & rose, 10 s. deep rose & chocolate, £ 1 black & bright blue and £ 5 mauve & black, all overprinted SPECIMEN in black, the 10 s. with few tone spots on gum, the balance fair to fine, large part og. Gi = £ 465.

145as+ 145bs var	*	200	(€ 180)
140/142	*	150	(€ 135)
140s/142s+ 144s	*	100	(€ 90)



ex 6187



6188

- 6187** 1902/03: 1902: 5 s dull blue & rose, 10 s. deep rose & chocolate, £ 1 black & bright blue, £ 1.10 s. green & violet, £ 5 mauve & black, unused examples, all overprinted SPECIMEN in black, of good appearance, the £ 1.10 s. slightly toned, fair to fine, large part og., the £ 5 signed Raybaudi *Gi* = £ 595.
- 6188** 1902: £ 1 10 s. green & violet, wmk. Crown CC, perf. 14, an unused example, well centred and of good colour, fresh and very fine, superb og. A scarce stamp *Gi* = £ 600.

Gibbons		Start price in CHF	Start price approx. €
140s/144s	*	150	(€ 135)
143	*	200	(€ 180)



King Edward VII



6189

- 6189** £ 10 green & orange, wmk. Crown CC, perf. 14, an unused example, of vivid colour, fresh and very fine, superb og. A great rarity. Cert. BPA (2019) *Gi* = £ 14'000.

145	*	5'000	(€ 4'500)
-----	---	-------	-----------



6190



ex 6191

Gibbons

Start price
in CHF

Start price
approx. €

- 6190** 1908: £ 1 10 s. brown-orange & deep purple, wmk. Multiple Crown CA, perf. 14, on chalk surfaced paper, an unused example optd. SPECIMEN in black, of good colour, fresh and fine, unmounted og. Gi = £ 375.
- 6191** 1904/08: Wmk. Multiple Crown CA, the set of eight values unused with additional 1 d. shade, together with the £ 1.10 s. brown-orange & deep purple optd. SPECIMEN; the set with large part og., the high value with aging on part og. but of fine appearance Gi = £ 625.

162s

*

120 (€ 110)146/157+
162s

*

120 (€ 110)

6192



6193

- 6192** 1908/09: 'Postage / Postage' the definitive set of seven to £ 1 purple & black on red unused, all overprinted SPECIMEN in black, the 6 d. with slightly suffused colour otherwise fresh and fine, large part og. A scarce set Gi = £ 425.
- 6193** 'Postage / Postage' £ 1 purple & black on red, an unused example, fresh and very fine, corner marginal with Plate Number 1, mounted in margin only, minor gum cracks, stamp unmounted og. A most attractive stamp Gi = 425.
Provenance: Renato Mondolfo.

165s/171s

*

150 (€ 135)

171

**

150 (€ 135)

Collection

- 6194** 1867/1909: The collection on leaves with 1867 1 s. green unused, fine range of Keith & Co overprints with large capitals 1 d. unused, in small capitals with 1 d. unused, (2), 3 d. unused (3), 6 d. lilac used, 6 d. violet unused (2), 1873 locally surcharged 1 s. purple-brown unused, 1874 5 s. rose (shades) unused (4), 1875/76 optd. 1 d. rose unused (2) and used, 1 d. yellow unused, 6 d. violet "Opt. inverted" used (cert. RPSL), 1 s. green unused and "Overprint Double" used, 1902/03 set to 4 s. unused, Natal revenue £ 1 and £ 5 unused etc. Generally fine, a good lot (59 items) Gi = £ 5'500+.

50-171

*

750 (€ 675)

Images of most of our collections you will find on our webpage: www.corinphila.ch