

# Long Island

## Surcharged on Turkish 'Fixed Fees' Revenue Stamps 1916 (May 7)



*Long Island landing place and terminus*



2277



2278

**2277** ½ d. on 20 pa. green & buff, perf. 12, typewriter surcharge 'G.R.I. / Postage' in black and '½ / Penny' in red, an unused example of perfect centering, fresh and very fine, superb og. Just one sheet, 25 stamps issued. An exceptionally rare stamp in the foremost quality: probably the finest extant. Signed Peter Holcombe. Cert. BPA (1978)  $G_i = \text{£ } 8'000$ .  
*Provenance: Corinphila sale 80, 24-31 March 1990, lot 5116.*

**2278** 2½ d. on 1 pi. violet & buff, perf. 12, typewriter surcharge 'G.R.I. / Postage' in red and value '2½ / Pence' below in red, an unused example of excellent centering and colour, minor diagonal gum bend of no significance, superb large part og. An exceptional example of this great rarity, with just 25 stamps issued. Cert. BPA (1972)  $G_i = \text{£ } 8'000$ .

*Note: Manuscript notation on the certificate, where Peter Holcombe states: "20 made (4 known used). Only 10 or so still recorded".*

*Provenance: Corinphila sale 80, 24-31 March 1990, lot 5122  
Robson Lowe, London, 22 May 1996, lot 1043. .*

Gibbons

Start price  
in CHF      Start price  
approx. €

1

\*

**3'000** (€ 2'700)

3

\*

**3'500** (€ 3'150)



Marquess of Bute



2279

Gibbons

Start price  
in CHFStart price  
approx. €

**2279** The famous Pirie-Gordon cover franked by the first issue ½ d. on 20 pa. green & buff, 1 d. on 10 pa. carmine & buff and 2½ d. on 1 pi. violet & buff; mailed by Lieutenant Commander H. Pirie-Gordon RNVR from Chustan to his wife in the Boltons, South Kensington, London cancelled by circular "S / 9 MY / 16" three times in red crayon, also cancelled on arrival by London machine cancellation (May 23) in black. Tiny opening tear in envelope at top, otherwise in immaculate condition and a philatelic rarity of the highest order. Cert. BPA (1982) Gi = £ 30'000 off cover.

*Provenance: Collection Marquess of Bute, Robson Lowe, Lowe, 20 May 1959, lot 262*

*Corinphila sale 67, 25-30 Oct 1982, lot 2661*

*Corinphila sale 80, 24-31 March 1990, lot 5125*

*Collection 'Samos', Ivy, Shreve & Mader, London, 19-20 June 1991, lot 560*

*Robson Lowe, London, 22 May 1996, lot 1044.*

1+2+3

**7'500** (€ 6'750)

**Typewriter Issue, Lined Green Paper.  
Initialed by Lieutenant Commander H. Pirie-Gordon RNVR 1916 (May 7)**



2280



2281



2282

- 2280** ½ d. black, on pale green lined paper, a fine unused example with large margins all round, marginal from top of sheet, initialed in red, unused as issued. A very scarce stamp  $G_i = \text{£} 3'000$ .
- 2281** ½ d. blue on pale green lined paper, an unused example with large margins all round, initialed in red, unused without gum as issued. A fine example of a very rare and seldom seen stamp, just 140 stamps were issued (in all colours) of the ½ d. value. Signed Peter Holcombe  $G_i = \text{£} 2'500$ .
- 2282** ½ d. mauve, on pale green lined paper, a fine unused example with large margins all round, marginal from top of sheet, initialed in red, unused as issued. A very scarce stamp. Signed W. Houtzamer. Cert. RPSL (1976)  $G_i = \text{£} 1'000$ .

Gibbons		Start price in CHF	Start price approx. €
4	(*)	<b>600</b>	(€ 540)
5	(*)	<b>500</b>	(€ 450)
6	(*)	<b>250</b>	(€ 225)

**Typewriter Issue, Thin & Laid Paper.  
Initialed by Lieutenant Commander H. Pirie-Gordon RNVR 1916 (May 7)**



2283



2284



2285

- 2283** ½ d. black, on thin horizontally laid paper, a fine unused example with good margins all round, initialed in red, unused as issued  $G_i = \text{£} 1'200$ .  
*Provenance: Spink, London, 4 Feb 2004, lot 336.*
- 2284** ½ d. blue, on thin horizontally laid paper, a fine unused example with good margins all round, initialed in red, unused as issued. An extremely rare stamp: just 237 examples in the three colours were issued  $G_i = \text{£} 1'700$ .  
*Provenance: Spink, London, 4 Feb 2004, lot 338.*
- 2285** ½ d. mauve, on thin horizontally laid paper, a fine unused example with large margins all round, initialed in red, variety '7 for &' in 'Postage & Revenue' (Row 3, Stamp 3), small rust spot next to initials, unused as issued. An extremely rare stamp  $G_i = \text{£} 3'000$ .  
*Provenance: Spink, London, 4 Feb 2004, lot 341.*

7	(*)	<b>250</b>	(€ 225)
8	(*)	<b>350</b>	(€ 315)
9b	(*)	<b>750</b>	(€ 675)



2286



2287



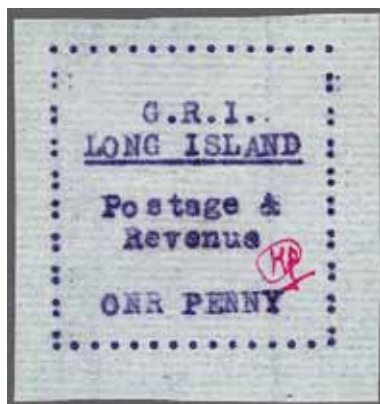
2288

- 2286 ½ d. mauve, on thin horizontally laid paper, a fine unused example with large margins all round, initialled in red, unused as issued. A very scarce stamp. Signed Peter Holcombe Gi = £ 600.
- 2287 1 d. black, on thin horizontally laid paper, a fine unused example with large margins all round, initialled in red, unused as issued. A very scarce stamp. Signed Peter Holcombe Gi = £ 450.
- 2288 1 d. blue, on thin horizontally laid paper, a fine unused example with large to huge margins all round, initialled in red, two ironed bends not detracting from appearance, unused as issued. A very scarce stamp. Signed Peter Holcombe Gi = £ 600.

	Gibbons	Start price in CHF	Start price approx. €
	9 (*)	200	(€ 180)
	10 (*)	150	(€ 135)
	11 (*)	200	(€ 180)



2289



2290



2291

- 2289 1 d. mauve, on thin horizontally laid paper, a fine unused example with large margins all round, initialled in red, variety '7 for &' in 'Postage & Revenue' (Row 3, Stamp 3), unused as issued. An extremely rare stamp Gi = £ 4'550. Provenance: Spink, London, 4 Feb 2004, lot 346.
- 2290 1 d. mauve, on thin horizontally laid paper, a fine unused example with large margins all round, initialled in red, with variety 'ONR PENNY' for ONE PENNY, fresh and very fine, unused as issued. A rare stamp. Signed Peter Holcombe Gi = £ 2'250. Provenance: Collection Marquess of Bute, Robson Lowe, London, 20 March 1959, lot 270.
- 2291 1 d. mauve, on thin horizontally laid paper, a fine unused example with large margins all round, initialled in red, unused as issued. A very scarce stamp. Signed Peter Holcombe Gi = £ 325.

	12a (*)	750	(€ 675)
	12f (*)	500	(€ 450)
	12 (*)	120	(€ 110)



2292



2293



2294



2295

		Gibbons		Start price in CHF	Start price approx. €
2292	1 d. red, on thin horizontally laid paper, a fine unused example with large margins all round, initialled in red, unused as issued. A very scarce stamp. Signed Peter Holcombe Gi = £ 375.	13	(*)	150	(€ 135)
2293	2½ d. blue, on thin horizontally laid paper, a fine unused example with good margins all round, initialled in red, unused as issued. An extremely rare stamp: just 80 examples in the three colours were issued, 20 examples (one sheet) being in blue Gi = £ 3'250. <i>Provenance: Spink, London, 4 Feb 2004, lot 350.</i>	15	(*)	400	(€ 360)
2294	6 d. mauve, on thin horizontally laid paper, a fine unused example with large to huge margins all round, initialled in red, unused as issued. A very rare stamp, just one sheet of 20 examples was printed. Signed Peter Holcombe Gi = £ 1'600.	19	(*)	400	(€ 360)
2295	1 s. black, on thin horizontally laid paper, a fine unused example with large margins all round, initialled in red, variety ISLANA for ISLAND (Row 1, Stamp 2), slight aging, unused as issued. An extremely rare stamp: just 4 examples possible Gi = £ 6'000. <i>Provenance: Harmers, London, 8 July 1999, lot 1076.</i>	20a	(*)	1'000	(€ 900)



2296



2297



2298



2299

2296	1 s. black, on thin horizontally laid paper, a fine unused example with large to huge margins all round, initialled in red, unused as issued. A scarce stamp. Signed Peter Holcombe Gi = £ 325.	20	(*)	120	(€ 110)
2297	1 s. blue, on thin horizontally laid paper, a fine unused example with large margins all round, initialled in red, unused as issued. A very scarce stamp: just 40 examples issued. Signed Peter Holcombe Gi = £ 3'250.	21	(*)	1'000	(€ 900)
2298	1 s. mauve, on thin horizontally laid paper, a fine unused example with large margins all round, initialled in red, variety ISLANA for ISLAND (Row 1, Stamp 2) unused as issued. An extremely rare stamp: just 9 examples possible Gi = £ 4'500. <i>Provenance: Collection Marquess of Bute, Robson Lowe, London, 20 May 1959, lot 280 Corinphila sale 80, 24-31 March 1990, lot 5159 Spink, London, 4 Feb 2004, lot 357.</i>	22a	(*)	750	(€ 675)
2299	1 s. mauve, on thin horizontally laid paper, a fine unused example with good to large margins all round, initialled in red, unused as issued. Ironed diagonal crease but a scarce stamp. Signed Peter Holcombe Gi = £ 325.	22	(*)	100	(€ 90)

**Typewriter Issue, Woven Paper.  
Initialed by Lieutenant Commander H. Pirie-Gordon RNVR 1916 (May 7)**



2300



2301

Gibbons

Start price in CHF Start price approx. €

**2300** ½ d. black, on thin wove paper, a fine unused example with good margins all round, initialed in violet, unused as issued. A scarce stamp, just 114 stamps in both colours issued. Cert. RPSL (1987) Gi = £ 700.

23 (\*) **150** (€ 135)

**2301** ½ d. mauve, on wove paper, a fine unused example with large margins all round, initialed in violet indelible pencil, slight thin and wrinkle, unused as issued. A very scarce stamp Gi = £ 1'900.

25 (\*) **350** (€ 315)

*Provenance: Spink, London, 4 Feb 2004, lot 359.*



2302

**2302** ½ d. black, on wove paper, a fine unused example with large margins all round, marginal from right of sheet, initialed in violet indelible pencil, scuff at top, unused as issued. A very scarce stamp Gi = £ 1'200.

26 (\*) **250** (€ 225)

*Provenance: Spink, London, 4 Feb 2004, lot 360.*



2303



2304

**2303** 1 s. black, on thin wove paper, a fine unused example with good to huge margins all round, initialed in violet indelible pencil, unused as issued. Ironed creases not apparent on face, a scarce stamp. Signed Peter Holcombe Gi = £ 550.

30 (\*) **150** (€ 135)

**2304** 2 d. mauve, on thin wove paper, a fine unused example with good margins all round, initialed in violet indelible pencil, unused as issued. A scarce stamp. Signed Peter Holcombe Gi = £ 550.

31 (\*) **180** (€ 160)



2305

Gibbons

Start price in CHF Start price approx. €

**2305** 2 d. and 1 d. mauve, the superb unused horizontal se-tenant pair on wove paper, marginal from left of sheet (Row 5, Stamps 1-2), with large margins all round, initialled in violet indelible pencil, unused as issued. A great rarity in superb quality: there are but two recorded examples of this error  $G_i = \text{£ } 14'000$ .

*Provenance: Collection Marquess of Bute, Robson Lowe, 20 May 1959, lot 285 Spink, London, 4 Feb 2004, lot 359.*

31a (\*) **3'000** (€ 2'700)



2306



2307



2308

**2306** 2½ d. black, on thin wove paper, a fine unused example with good margins all round, initialled in violet indelible pencil, unused as issued. A scarce stamp  $G_i = \text{£ } 1'100$ .

32 (\*) **300** (€ 270)

**2307** 2½ d. mauve, on thin wove paper, a fine unused example with good margins all round, initialled in violet indelible pencil, unused as issued. A very rare stamp with just 24 examples issued. Signed Peter Holcombe  $G_i = \text{£ } 3'000$ .

34 (\*) **1'000** (€ 900)

**2308** 6 d. black, on thin wove paper, a fine unused example with good to huge margins all round, initialled in violet indelible pencil, variety "Rvenne &" for "Revenue" (Row 4, Stamp 1), minor wrinkles and ironed crease in margin, unused as issued. An extremely rare stamp. Signed Peter Holcombe  $G_i = \text{£ } 6'000$ .

35a (\*) **1'200** (€ 1'080)



2309



2310

**2309** 6 d. black, on thin wove paper, a fine unused example with good margins all round, initialled in violet indelible pencil, unused as issued. Slight corner creases but a scarce stamp. Signed Peter Holcombe  $G_i = \text{£ } 550$ .

35 (\*) **180** (€ 160)

**2310** 6 d. blue, on wove paper, a fine unused example with large margins all round, initialled in violet indelible pencil, slight wrinkle, unused as issued. A very rare stamp  $G_i = \text{£ } 2'500$ . *Provenance: Spink, London, 4 Feb 2004, lot 367.*

36 (\*) **400** (€ 360)