

Tuesday 26 January 2021, 18.00 h

Ecuador 1865-1872

The 'GUAYAQUIL' Collection (part I)



Port and city of Guayaquil

ECUADOR

1865/72, Proof Printings



View of Quito



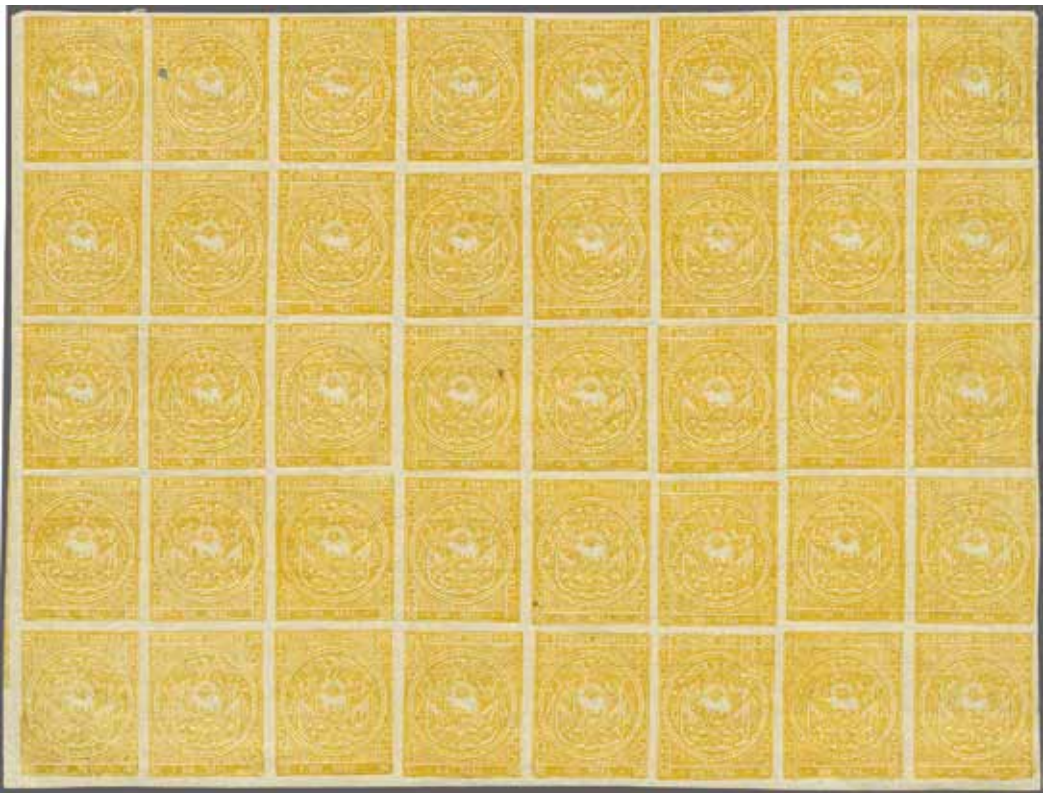
4001



4002

		Scott		Start price in CHF	Start price approx. €
4001	½ real green on greenish wove paper, a fresh and fine Plate Proof on ungummed paper with large margins all round, two minor age spots at right. A scarce and most interesting Proof in the issued colour of the 1 real. It is stated that the issue was designed by Emilia Rivadeneira who copied the Greek Large Hermes Heads for her design. This Plate Proof matched very closely the Large Hermes 5 leptas value both in colour and the shade of the paper - indeed the three original stamps are in the shades utilised for the 5, 10 and 20 leptas values.				
		(1 Proof)	(*)	250	(€ 235)
4002	½ real - a horizontal Proof pair struck in black on extremely thin, almost pelure paper, with large margins all round and already showing the misalignment between the clichés, some minor black spotting due to the weight of the gum on the thin paper. An exceptionally rare Proof. Signed Bühler.				
		(1 Proof)	*	400	(€ 370)

1872, 1 real on 'Quadrille Paper'



4003



4004

Scott	Start price in CHF	Start price approx. €
(1) 田*/**	750	(€ 700)
(1) 田	250	(€ 235)

- 4003** **Fourth Printing Group** 1 real deep yellow on thin "quadrille" paper, a fine unused block of forty (8 x 5) from the lower left corner of the sheet of 90 subjects, with part of vertical marginal frameline at left, positions 46-53/82-89, with position 50 showing "Extended "R" in Correos" flaw, position 64 with "Indented Left Vertical Frameline" flaw, position 66 with "Diagonal Scratch from Centre Circle to Base" Plate flaw and position 71 with "Line through Real" flaw. The multiple showing some deterioration to the Plate especially at the edges of the stamps, a few minor imperfections with small hole in pos. 47 and inclusion in pos. 88 but of vibrant colour and large part or unmounted og. Rare.
- 4004** 1 real yellow on quadrille paper, the irregular used block of nine, showing horizontal marginal frameline from base of sheet, positions 47/55-56/64-65/73-74/82-83, large margins all round but for two imperfections on three stamps, all neatly cancelled by "Ambato" datestamps (July 18) in black. An exceptionally rare multiple - one of the largest known of this late and elusive printing.
- Provenance: Collection 'Crown Point', Corinthila sale 131, Oct 2001, lot 6769.*



Position 71 "Line through Real"



View of Quito



4005

Scott

Start price
in CHFStart price
approx. €

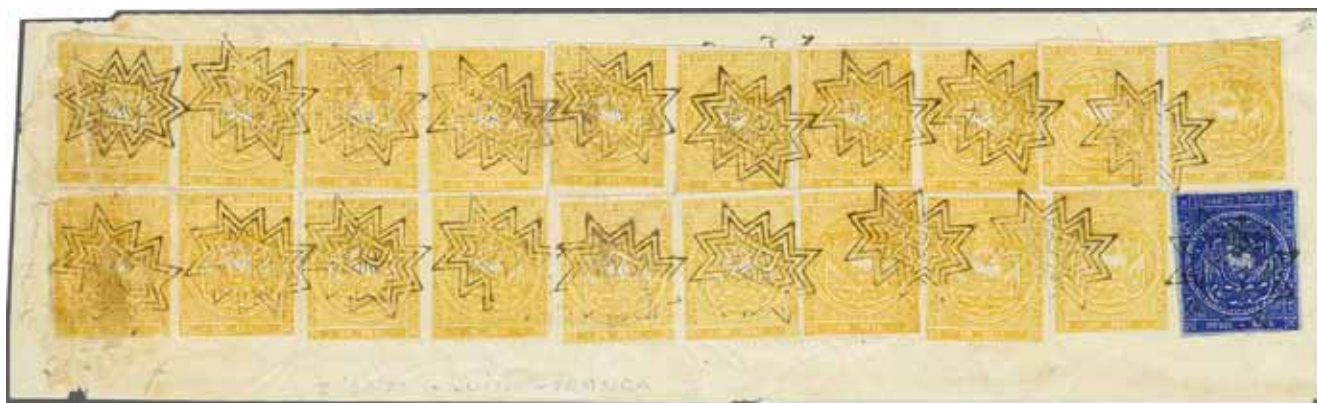
- 4005** 1 real yellow on quadrille paper, a single example (position 71 with "Line through Real") with three horizontal pairs, margins close to large, tied to 1873 piece by five complete strikes of the framed 13 point "P.I." (Porte Interno) fancy handstamps beautifully applied in red, with matching "Quito / Franca" datestamp at right (April 2). File fold at right does not detract from a piece of great charm, rarity and visual appeal.

(1)

△

600

(€ 560)



4006

- 4006** 1 real yellow on quadrille paper - seven horizontal pairs and six single examples used with 1871 ½ real deep blue on blue paper on large part 1873 legal front of to Latacunga and adhesives cancelled by 18 strikes of ornamental 'P.I.' geometric handstamps (Porte Interno) in black. Manuscript notation '2 libras 7 oz' (39 ounces) explaining the 19½ reales franking and reverse with QUITO / FRANCA datestamp (Jan 29, 1873). Left hand stamps with faults and the cover refolded for display but an extremely rare multiple franking, especially so with this elusive cancellation. Cert. Moorhouse (2014).

Provenance: Collection Dr. Hugo Goeggel, Corinthila sale 191, Nov 2014, lot 793.

(1+ 7)

(✉)

1'500

(€ 1'395)



View of Guayaquil



Louise Boyd Dale



Alfred F. Lichtenstein



4007

Scott

Start price
in CHF

Start price
approx. €

4007 1 real orange buff on quadrille paper with large margins all round and portion of adjoining stamp at base with 1 real yellow on white wove paper, close to touched margins, used on 1872 entire letter to Lima, Peru tied by bold "Guayaquil / Franca" datestamp (Oct 19) struck in blue; in combination with France 1867 laureated 30 c. brown (Yvert 30) in a horizontal pair tied by dotted Anchor lozenge in black. Carried on the French Packet "Ville de St. Nazaire" and struck with erroneously dated "GUAYAQUIL / PAQ. FR. F No. 2" datestamp (Salles fig. 1383) in black - the date the Steamer was due to arrive, see Salles Vol. IV, page 182. Internal docketing of receipt on October 14. A rare and spectacular entire. Signed Calves, Goebel, Holcombe, Roumet. Cert. Moorhouse (2010).

Reference: Salles Volume IV, page 182 and the excellent article by Percy Bargholtz and Robert D'Elia in the Collectors Club Philatelist 1995 (Issue 74) and 1996 (Issue 75).

Provenance: Collection Louise Boyd Dale & Alfred F. Lichtenstein, Harmers, New York, 6 May 1970, lot 797.

Corinphila sale 83, Sept 1991, lot 6050.

Roumet, Paris, 13 June 1995.

Collection Fiorenzo Longhi, Spink, Lugano, June 2014, ex lot 111.

(1+4)



7'500 (€ 6'975)

1865/72, ½ real on Wove paper



4008



Benjamin H. Homan Jr.

Scott

Start price
in CHFStart price
approx. €

4008 1865 (Jan 1): First Printing ½ real bright ultramarine on greyish wove paper with slight surface blueing, fine impression, the superb unused block of 42 being the right hand half of the sheet of 84 subjects, positions 7-12, 19-24, 31-36, 43-48, 55-60, 67-72, 79-84, with the sixth stamp showing a small tear, full marginal rule vertically at right and horizontally at both top and at base, minor bends between rows and some colour loss in small patches but this is of no real significance as this multiple represents the largest recorded of the First Printing where only two other large blocks (of 12 and 18) exist. A stunning multiple of great freshness with large part or unmounted original gum. One of the great gems of all South American Philately. Unique.

Provenance: Collection Benjamin H. Homan Jr., Harmers, London, 15 Dec 1993, lot 1081.

(2) 田*/**

25'000 (€ 23'250)



4009



4010



Street scene in Quito

4009 ½ real ultramarine (deep bright blue), an unused block of six (3 x 2) from top of sheet with horizontal marginal frameline at top, good to large margins all round and which probably adjoined the Dr. Goeggel half sheet illustrated on page of Edition D'Or XXXIII; slight crease only visible from the reverse on large part of. Trivial age spot and surface scuff on fourth stamp but a magnificent multiple of this extremely rare printing, the fourth largest block extant.

4010 ½ real ultramarine on slightly greyish paper, a used example with four margins, clearly cancelled "Quito / Franca" datestamp "4 / ENERO / 65" - the fourth day of proposed issue and the first day of actual issue. Ex collection Olgieser. Unique.

Note: The earliest recorded date of use for the Ecuador first issue is 4th January 1865 on this ½ real used in Quito and also on a 1 real orange-yellow. The 1st January 1865 was a Sunday and it is probable the stamps were delivered to Post Offices on the following day and actually issued on the 3rd or 4th of January; certainly this last date marked the first shipment of adhesives to Guayaquil.

Scott

Start price
in CHFStart price
approx. €

(2)

田*

1'500 (€ 1'395)

(2)

750 (€ 700)

4011

4011 ½ real ultramarine, a used example with irregular to huge margins all round, tied to 6 February 1865 cover to Guayaquil by manuscript "Babahoyo" in ink. A rare and early usage in the second month, prior to Babahoyo receiving its datestamp. Slight aging not affecting the fine adhesive, a rare cover and a unique usage.

*Provenance: Collection Dujmovic
Collection Longhi
Collection Olgieser.*

(2)

✉

1'200 (€ 1'115)




4012



Cathedral in Lima

- 4012** ½ real blue, fine clear impression, a horizontal strip of four with large margins all round the first three stamps, the fourth torn on opening the reverse of 1865 cover addressed to Valparaiso, Chile, all tied by "Guayaquil" datestamps (May 1) with two further strikes of the datestamp on obverse. Despite the opening tear, a cover of some charm and rarity - the earliest recorded Foreign Destination cover of the Ecuador First Issue. Cert. Moorhouse (2011).
Provenance: Collection Dujmovic, Collection Fiorenzo Longhi.

Scott

Start price
in CHF Start price
approx. €(2)  **3'000** (€ 2'790)

4013



Rafael Barba Jijon

- 4013** **Third Printing Group** ½ real very deep blue on white wove paper, a fine example with four large margins paying the internal rate on 1868 cover to Paris, France tied by "Quito / Franca" datestamp in black, with additional strike alongside (April 18). Reverse with GUAYAQUIL British P.O. cds in black (April 25), three line dated PANAMA / TRANSIT on obverse (April 29) in black. Thence carried by French Paquebot 'La Floride' with circular 'LIGNE A / PAQ. FR. No. 3' datestamp on reverse (May 1) and Paris arrival cds (May 24) where charged with handstruck '12' décimes due to pay. An exceptional and extremely rare cover to a Transatlantic destination. Signed Holcombe.

Note: This small correspondence of eleven covers was discovered and dispersed at the Granada Philatelic Exhibition in 1992. This cover being the earliest cover from the correspondence.

(2a)  **3'000** (€ 2'790)



Rafael Barba Jijon



4014

Scott

Start price
in CHF Start price
approx. €

- 4014** ½ real deep blue (dry print) on white wove paper, a fine example with four large margins, paying the internal rate on 1871 cover to Paris, France tied by "Quito / Franca" datestamp in red (Jan 18). Reverse with GUAYAQUIL British P.O. cds in black (Jan 26), circular dated PANAMA / TRANSIT on obverse (Feb 3) in black. Thence carried by British Packet with London transit cds (Feb 27) and "GB / 1F 90c." Anglo-French accountancy marking applied in black. Charged with handstruck '12' décimes due to pay on arrival (Paris at this date under Prussian Occupation). An exceptional and extremely rare cover to a Transatlantic destination. Signed Holcombe.

Note: This small correspondence of eleven covers was discovered and dispersed at the Granada Philatelic Exhibition in 1992. This cover being the seventh cover from the correspondence.

(2a) **3'000** (€ 2'790)

4015

- 4015** ½ real very deep blue, a single and a vertical strip of three all used on 1868 entire letter from the Bank of Ecuador to Lima, Peru, Chavez correspondence, prepaying the rate to neighbouring countries for a letter under 1 ounce, margins somewhat clipped but all cancelled by the Guayaquil FRANCA lozenge of dots with "Guayaquil" datestamp at left (Aug 12) in black. Reverse with Lima arrival (Aug 17) datestamp. A rare and most attractive entire.

(2a) **500** (€ 465)The Central Bank of
Ecuador in Quito



Cathedral of San Francisco in Azogues



4016

Scott

Start price
in CHF

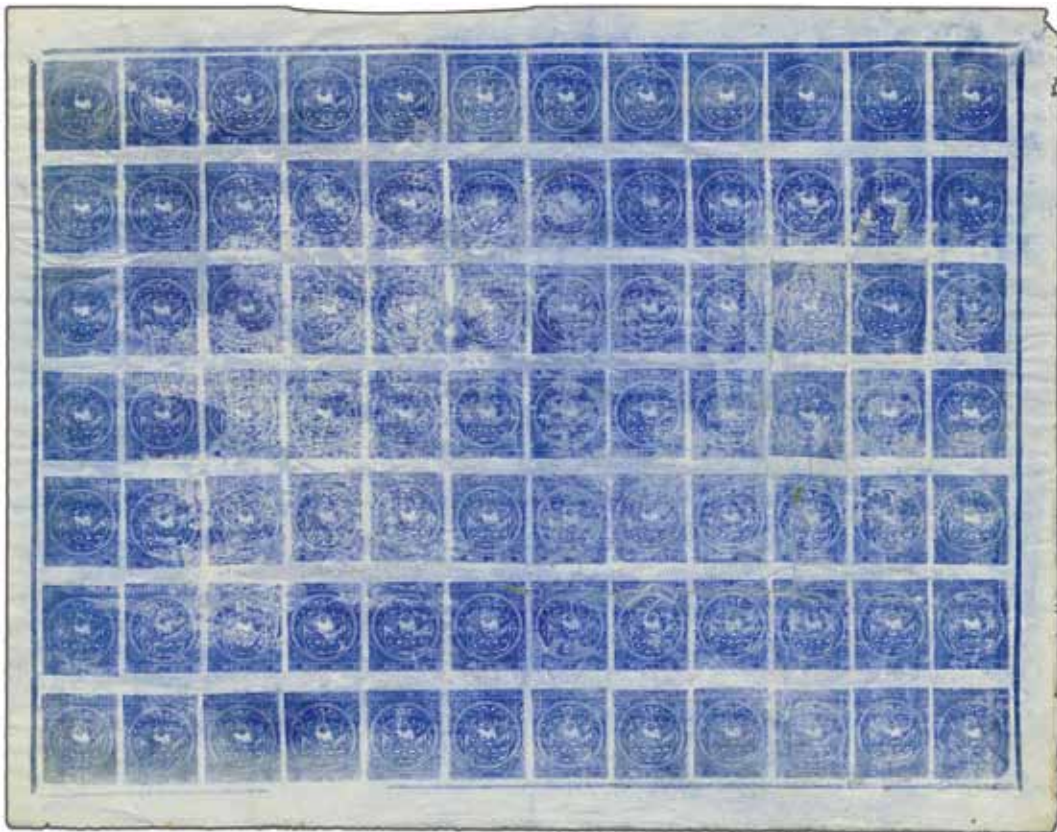
Start price
approx. €

4016 ½ real pale blue to blue, a dry print, a refolded large 1871 cover endorsed "*Civiles*" addressed to Cuenca, franked by a multiple of twenty-one examples, marginal from the top of sheet with one stamp unfortunately missing, positions 4-6/15-18/27-30/39-42/50-54/62, with positions 4-6 all showing the horizontal marginal rule; all stamps cancelled by the extremely rare AZOGUEZ / FRANCA datestamps (Jan 30) struck in red with the surround of the datestamp also struck twice. Faults to the multiple but a stunning Exhibition piece, this being the largest known used multiple of the Medio real on or off cover.

(2a)



3'000 (€ 2'790)



4017

Scott

Start price	Start price
in CHF	approx. €

- 4017 Fourth Printing Group** ½ real very deep bright ultramarine (royal blue), the unused complete sheet of 84 subjects (12 x 7) with complete surrounding framelines (Type I showing gaps at three corners) on all four sides and joined at lower right corner; the sheet with some damage with seven stamps torn and with a block of four replaced (positions 34-35/46-47), however a sheet of great scarcity and ably demonstrating not only the considerable wear to the plate but also the poor paper quality and workmanship employed during the printing. A remarkable and very rare sheet.

(2a var)	田*/**	2'000	(€ 1'860)
----------	-------	--------------	-----------



4018

- 4018** ½ real deep ultramarine on white wove paper, a fine appearing example in a rich 'wet' shade, touched at lower left, with almost definition in the printing at all, tied to cover to Riobamba endorsed "¾ oz." in manuscript by "Ambato" datestamp (Jan 29) in black and additionally dated on reverse. An unusual stamp and cover.

(2a var)	✉	300	(€ 280)
----------	---	------------	---------



4019



4020

- 4019** ½ real deep blue, a mottled 'dry' print in a royal blue shade, a used horizontal strip of four from the lower right corner of the sheet, positions 81-84, with last stamp showing the rounded SE corner Plate flaw and part of the marginal frameline, large margins all round, used on 1871 cover to Valparaiso tied by three strikes of the dotted FRANCA lozenge in black. A delightful cover to a surprisingly scarce destination for Ecuador first issue mail. *Provenance: Heinrich Köhler, sale 238, Feb 1983, lot 3775.*

Scott

Start price
in CHFStart price
approx. €

- 4020** ½ real dull greyish-blue, a dry printing alongside ½ real pale ultramarine (2) used with single 1 real olive-yellow on 15 March 1871 cover to Ambato endorsed "Civil" and weight "5 oz." in manuscript, all stamps with large margins all round and tied by 64 dot lozenge in black. The ½ real adhesives being poor impressions with a 'striated' paper appearance from the front with the ink poorly applied leaving the stamps with a watery look. A rare and unusual cover.

(2a)

**750**

(€ 700)

(2a+ 4a)

**1'000**

(€ 930)



4021



4022

- 4021** **Fifth Printing Group** ½ real deep bright blue on surface blued paper, a fine example with large margins all round used on 1873 entire letter to Guaranda tied by framed "P.I." in ten pointed star obliterator (Porte Interno) with "Guayaquil" datestamp (March 15) alongside, both in red. For a similar usage see the Bustamante collection, lot 32. A delightful and extremely rare entire of great visual appeal. *Provenance: Harmers, London, 30 April 1996, lot 6.*

(2c)

**1'000**

(€ 930)

- 4022** 1 real green and ½ real bright blue, four margined examples used on 1866 cover endorsed "2½ oz." from Ambato to Riobamba, neatly cancelled by "Ambato" circular datestamp (March 30) in black. Reverse with dated docketing of receipt, a fresh and fine cover.

(2+ 5)

**300**

(€ 280)

1865/72, 1 real buff on Wove paper



View of Quito



4023

Scott

Start price in CHF Start price approx. €

- 4023** **First Printing Group** 1 real orange-yellow on white wove paper, a used example with clear margins, boldly cancelled by "Quito / Franca" datestamp "4 / ENERO / 65" - the fourth day of proposed issue and the first day of actual issue. Ex collection Olgieser. Unique.
Note: The earliest recorded date of use for the Ecuador first issue is 4th January 1865 on this 1 real used in Quito and also on a ½ real ultramarine. The 1st January 1865 was a Sunday and it is probable the stamps were delivered to Post Offices on the the following day and actually issued on the 3rd or 4th of January; certainly this last date marked the first shipment of adhesives to Guayaquil.

1'000 (€ 930)



4024



4025

- 4024** 1 real orange-vermilion, early impression, a used example with slight thin bit cancelled by large part "Pelileo" circular star in black. Rare thus.
4025 1 real bistre-buff, a fine example with large margins all round used on large 1866 piece with 1865 ½ real bright blue, just shaved at base, tied by "Guaranda" datestamp (April 23) in black.

(3a)

120 (€ 110)

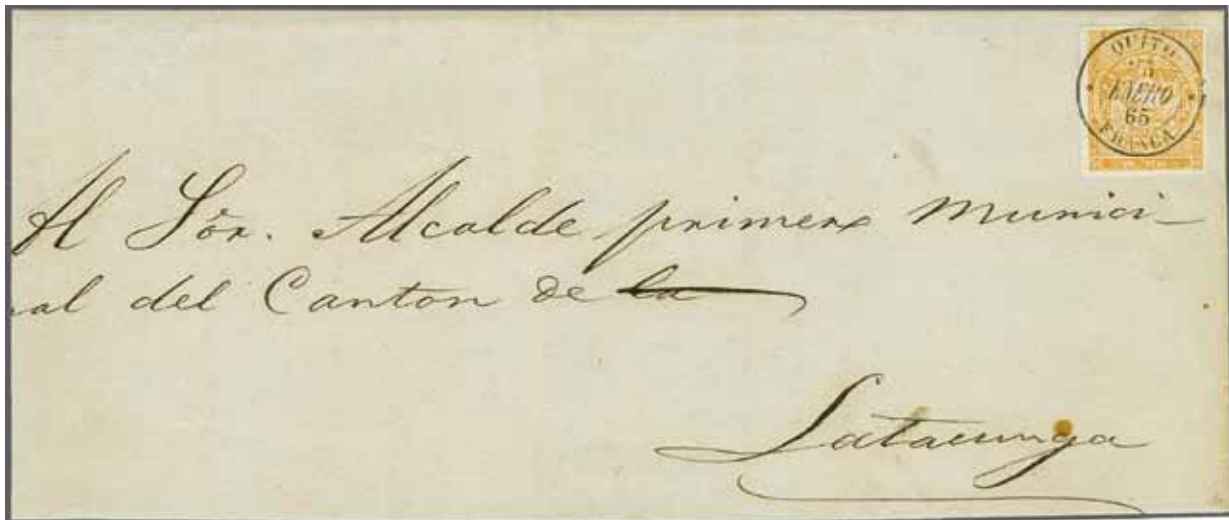
(3+ 2)

△

120 (€ 110)



View of Quito



4026

Scott

Start price
in CHFStart price
approx. €

- 4026** 1 real orange-vermilion, a beautiful clear printing with large even margins all round, position 80 on the sheet, used on 1865 cover to Latacunga superbly tied by "Quito / Franca" datestamp in black (Jan 23). An extraordinarily early usage of the First Issue in the first month of usage (the second earliest recorded cover) exhibiting one of the defining characteristic shades of colour of the earliest impressions. Rare and delightful.

(3a)

**1'000**

(€ 930)



4027

- 4027** 1 real olive-bistre, a vertical pair in this resonant shade, large margins all round and minutely grazed on the frameline at base, used on 1866 cover front to Ambato tied by "Guaranda" datestamp (March 20) in black. A fine and scarce example of this printing on cover. Provenance: Collection 'Crown Point', Corinthila sale 131, Oct 2001, lot 6734.

(3)

**300**

(€ 280)



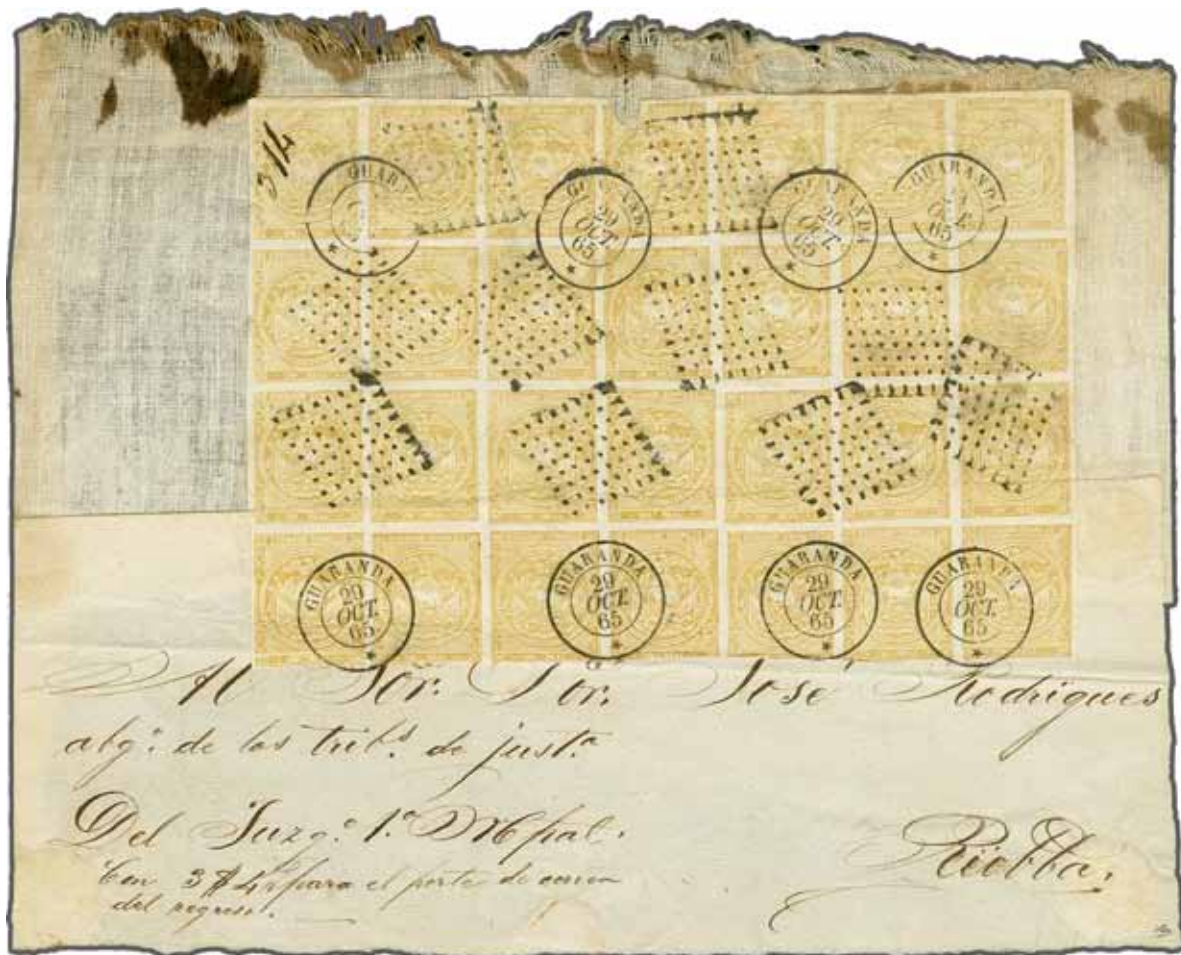
Position 43 doubling of top outer frame line



Position 43 with additional vertical line at SE corner



*Position 50 extended "R"
in "Correos" flaw*



4028

Scott

Start price in CHF	Start price approx. €
-----------------------	--------------------------

4028 1 real pale bistre, the famous block of 28 used on 1865 large part cloth cover to Riobamba, positions 19-25/28-34/37-43/46-52; with faults on three or four adhesives of no great significance, all cancelled by ten strikes of the 64 dot lozenge and eight strikes of the "Guaranda" circular datestamp (Oct 29) on despatch. Position 43 showing additional vertical line at SE corner and doubling of top outer frame line and position 50 showing the extended "R" in "Correos" flaw. A magnificent Exhibition piece, the largest and finest of the two known large blocks on cover, almost certainly the largest multiple of the fine early impression on or off cover, a famous and undeniably important item of Ecuadorean and South American philately.

Provenance: Collection 'Crown Point', Corinphila sale 131, Oct 2001, lot 6729.

(3) (✉) 15'000 (€ 13'950)



Position 35 NE square broken



4029

Scott

Start price
in CHF Start price
approx. €

- 4029** 1 real yellow-buff, fine impression, a horizontal pair, positions 35-36, position 35 with Plate flaw NE square broken, used on 1865 cover to Ambato in combination with ½ real bright blue, early impression, cancelled by two fine strikes of "Quito / Franca" datestamp (January 18) in black. Manuscript endorsement "5 oz." at upper right. A very rare and most appealing cover - the earliest recorded usage of the 1 real value on cover.

(3+ 2)

**1'500** (€ 1'395)

4030

- 4030** 1 real orange, a horizontal strip of four, positions 6-9 on the sheet and showing partial upper horizontal marginal frameline above two stamps, used on refolded 1865 cover to Latacunga with additional 1 real pale orange (position 81), damaged at right and single early impression 1865 ½ real bright blue also showing part of horizontal marginal frameline at base; all cancelled by manuscript pen line and central "Quito / Franca" datestamp (Feb 15) in black. Faults but a fine and early demonstration of the differing shades initially produced, and an extremely early usage in the second month of issue.

(3a+ 2)

**500** (€ 465)



View of Latacunga



Position 43 doubling of top outer frame line



Position 43 with additional vertical line at SE corner



4031

Scott

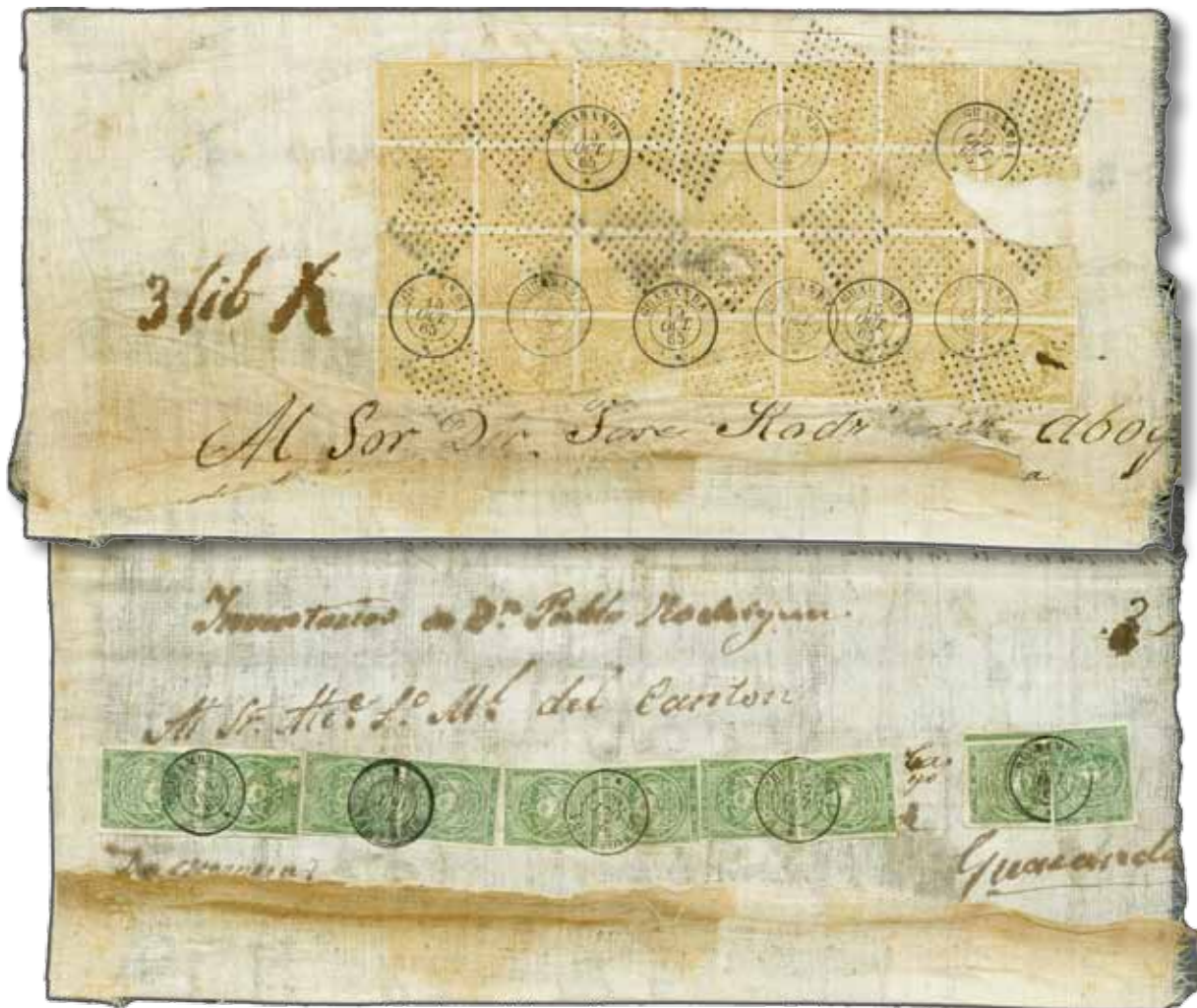
Start price
in CHF Start price
approx. €

4031 1 real bistre-buff, the extraordinary block of five (positions 34-35/43-45) with position 43 showing the additional vertical line at SE corner and doubling of the top outer frame line, and a superb block of six (positions 8-9/17-18/26-27) used in combination with single ½ real bright blue on 1866 large part cover front to Ambato; endorsed under fold "1 libras 7 oz." and prepaid corrects at 11½ reales. The adhesives all tied by seven strikes of the 64 dot lozenge with "Latacunga" datestamps (Feb 1) of despatch. Tiny contemporary scissor cuts in each multiple of no significance and not detracting from the appearance of a splendid and exotic cover for the connoisseur of the first issue.

(3+ 2) (田) **4'000** (€ 3'720)



The Chimborazo Volcano by Riobamba



4032

Scott

Start price
in CHF

Start price
approx. €

- 4032** 1 real pale ochre, clear early impression on white wove paper, the extraordinary block of 28 stamps (4 x 7) used on large 'turned' 18675 cloth cover rated at "3½ Libras" (56 ounces) in manuscript, positions 6-9/15-18/24-27/33-36/42-45/51-54/60-63; thus being most of the right hand side of the sheet, with damage to six stamps of no great significance for an astonishing franking such as this and no stamps missing, all cancelled by 64 dot lozenge and nine strikes of the "Guaranda" datestamp (Oct 15) in black. The reverse of the cover mailed back to Guaranda bearing twenty examples of the 1 real green, including strips of three and of five, all cancelled by "Riobamba" datestamps (Oct 25). An exceptional cover, see Edition D'Or, vol. XXXIII page 79; the cover represents one of the largest known first issue frankings and is thus of great philatelic importance to Ecuadorean classic philately.

(3+ 5)



7'500 (€ 6'975)



4033



4034

Scott		Start price in CHF	Start price approx. €
(3a)	田*	1'200	(€ 1'115)
(3a)		100	(€ 95)

- 4033** **Second Printing Group** 1 real orange, an unused block of four in a vibrant shade and early impression, marginal from left of sheet with the vertical frameline at left, large margins all round but for slight piece missing at top, large part og. A magnificent and extremely rare block.
- 4034** 1 real 'blood' orange, a fine vertical pair with huge margins all round, in an exceptionally vivid shade, neatly cancelled by "Ambato" datestamps (13 Oct 1867) in black.



4035

- 4035** 1 real orange-yellow, horizontal strip of seven, positions 57-63, used on 1867 cover front and part back to Guaranda, cancelled by three strikes of the 64 dot lozenge and by "Latacunga" circular datestamp (July 18) at left. The strip with four contemporary scissor cuts between stamps at top with close to large margins all round and with part of adjoining stamps at top. Manuscript "14 oz." rate in blue crayon on front panel. An exceptional and most attractive franking.

(3a)	✉	1'500	(€ 1'395)
------	---	-------	-----------




4036

Scott

Start price
in CHF Start price
approx. €

- 4036** 1 real orange, a vertical block of six in a vibrant rich shade, with left marginal vertical frameline, positions 46-47/55-56/64-65, margins just grazed in places but large on two sides, tiny contemporary scissor cut between stamps at base as is somewhat usual, on 1867 cover to Guaranda endorsed "12 oz." and further endorsed "fuera de balija" (outside the Mailbag), cancelled by two strikes of the 64 dot lozenge and superb "Latacunga" datestamp in black (May 9). Exceptional and scarce usage, a delightful multiple on letter.

(3a)  **1'500** (€ 1'395)

4037

- 4037** 1 real orange-yellow, a diagonally bisected example used on 1867 cover to Ambato boldly tied by "Latacunga" datestamp (July 31) in black. The cover refolded for Exhibit display, a very rare and splendid cover of great visual appeal.

(3c)  **1'000** (€ 930)

4038

- 4038** 1 real orange-buff, a fine example with margins all round, position 50 with "Extended "R" in Correos", used on 1866 cover front to Guaranda with weight "3 oz." in manuscript at top, in combination with 1865 ½ real blue, position 53 with "Dent in Upper Frameline above "C" of Correos", neatly tied by "Ambato" datestamps (Nov 2) in black. An unusual item showing two major Plate flaws on the same cover.

(3a+ 2a)  **175** (€ 165)

*Church in Latacunga*

4039

Scott

Start price
in CHF

Start price
approx. €

4039 1 real orange-yellow, a superb block of ten in a vivid shade, positions 59-63/68-72 with position 71 showing the "Line through Real" plate flaw clearly, the block with minor scissor cut between second and third stamps of no significance, used with ½ real blue (position 59) on large part 1866 cover tied by five strikes of the 64 dot lozenge and by two strikes of the "Latacunga" datestamp (Nov 15) in black. The largest recorded multiple on cover in this shade. A rarity.

Provenance: Harmers, London, 30 April 1996, lot 42.

Collection 'Crown Point', Corinthila sale 131, Oct 2001, lot 6748.

(3a+ 2a)



5'000 (€ 4'650)

1865/72, 1 real yellow on Wove paper



4040



Position 66 "Diagonal Scratch
from Centre Circle to Base"

- 4040** **Second Printing Group** 1 real olive-yellow, a superb unused block of twelve (4x3) from the lower left corner of the sheet, positions 64-68/73-76/82-85, showing the major Plate flaw on position 66 with "Diagonal Scratch from Centre Circle to Base", with complete impression of the oval "Republica del Ecuador" Coat of Arms embossed seal in the lower left corner, clearly showing through to the front of the block. Without gum but a fine and most impressive multiple of excellent rich colour. Rare.

Scott

Start price
in CHFStart price
approx. €

(4a+ 4e)

田(*)

300

(€ 280)



Position 4 "Double Lower Frameline at Base"



4041

- 4041** 1 real olive-ochre, clear impression, an unused block of thirty-two, positions 1-8/10-17/19-26/28-35, position 1 showing the "Republica del Ecuador" colourless Embossed oval security marking, position 4 showing the major Plate flaw "Double Lower Frameline at Base", margins good to large all round, of excellent colour and resonance, unused without gum. A very rare and most attractive multiple.

Provenance: Collection 'Crown Point', Corinthila sale 131, Oct 2001, lot 6733.

Collection Dr. Hugo Goeggel, Corinthila sale 191, Nov 2014, lot 805.

(4+ 4e)

田*/**

1'200

(€ 1'115)



4042

Scott

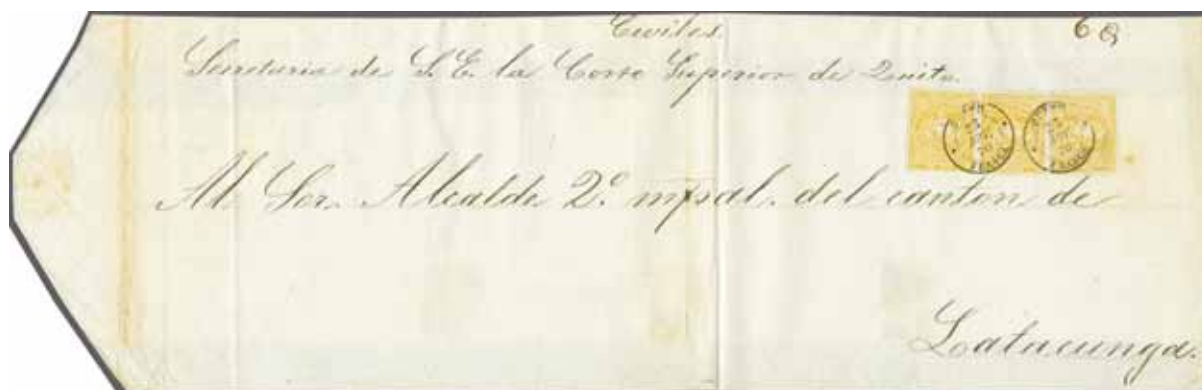
Start price
in CHFStart price
approx. €

- 4042** 1 real yellow-orange, a horizontal pair in a bright shade with large margins all round and portion of adjoining stamp at right, used on 1869 cover to Islay, Peru via Arequipa tied by "Guayaquil / Franca" datestamp (Dec 8) in blue. Fully paid at single rate to Callao with backstamp on reverse (Dec 19); taxed for remainder of journey with "10 ct." in manuscript. Arequipa cds (Dec 23) in black also on reverse of a fine and scarce cover.

(4)

**300**

(€ 280)



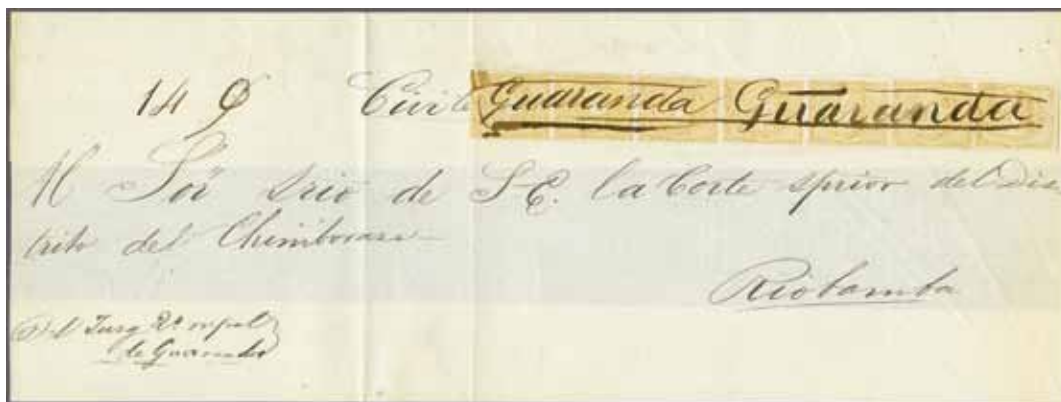
4043

- 4043** 1 real yellow, a single example and a horizontal pair, all with ample to large margins all round, clear impressions, used on 1870 folded cover to Latacunga with manuscript weight "6 oz." at top, all cancelled by fine "Quito / Franca" datestamps (Nov 23) in black. A late usage of a clear impression 1 real and a most attractive cover.

(4)

**350**

(€ 325)



4044

- 4044** 1 real in the 'sandy' bistre shade, a vertical strip of seven with large margins all round, sheet marginal at top with small portion of the horizontal frameline, positions 8/17/26/35/44/53/62, used on circa 1868 cover and large part back to Riobamba annotated "14 oz." in manuscript cancelled by "Guaranda" twice in manuscript. Some ironed creases not affecting the dramatic appearance, refolded for Exhibit display, a remarkable and rare franking. Cert. Moorhouse (2009).

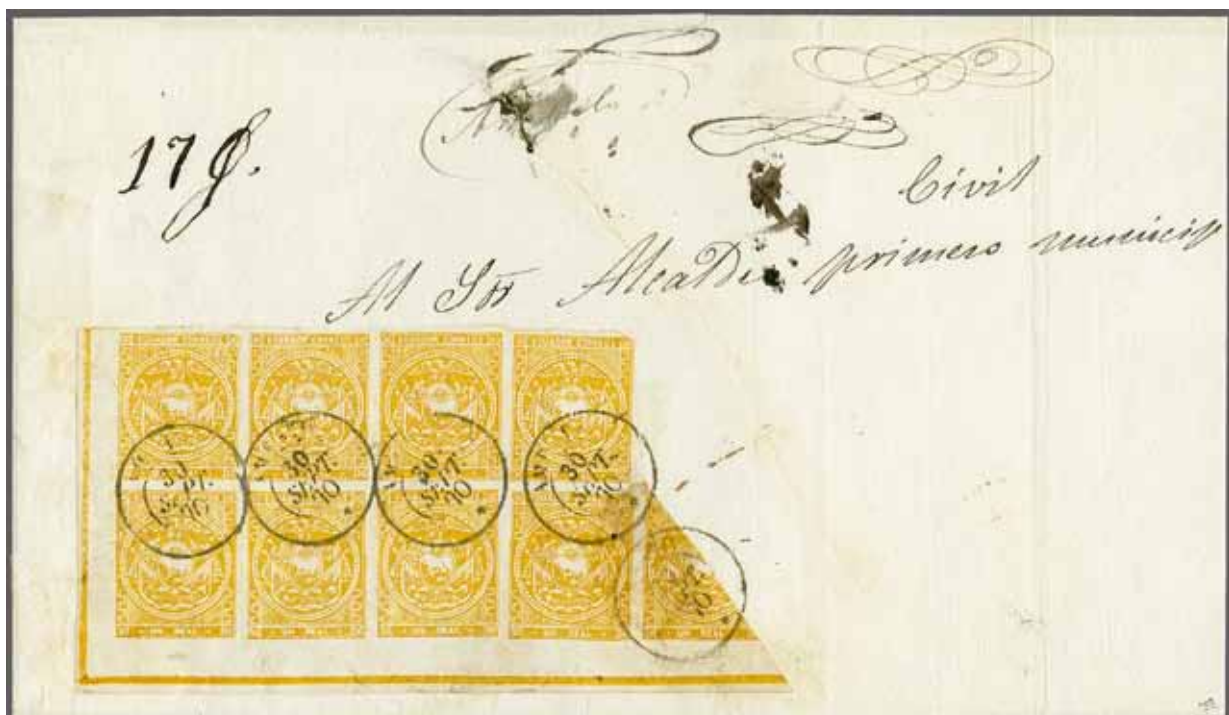
Provenance: Harmers, London, 30 April 1996, lot 98.

Collection Fiorenzo Longhi, Investiphila, 17-18 April 2010, lot 506.

(4)

**750**

(€ 700)

*View of Ambato*

4045

Scott

Start price
in CHFStart price
approx. €

4045

1 real yellow, a clear impression (slightly worn), the magnificent sheet corner marginal block of eight from the lower left corner of the sheet and the ninth stamp diagonally bisected, positions 73-76/82-86 with full marginal framelines at left and at base, used on 1870 cover to Chimbo endorsed "17 oz." at top, all cancelled by "Ambato" datestamps (Sept 30) in black. The largest recorded block with a bisect on letter and a sensational cover for the advanced collection - without doubt the finest bisected usage in Ecuadorean Classic philately.

Provenance: Collection 'Crown Point', Corinphila sale 131, Oct 2001, lot 6773.

(4+ 4c)

**7'500**

(€ 6'975)



4046

Scott		Start price in CHF	Start price approx. €
(4a)	田(*)	250	(€ 235)

4046 **Third Printing Group** 1 real olive, an unused block of four, marginal from right of sheet, positions 53-54/62-63, ample to large margins all round fresh and of very fine rich colour, unused without gum. Scarce.
Provenance: Collection 'Crown Point', Corinthila sale 131, Oct 2001, lot 6731.



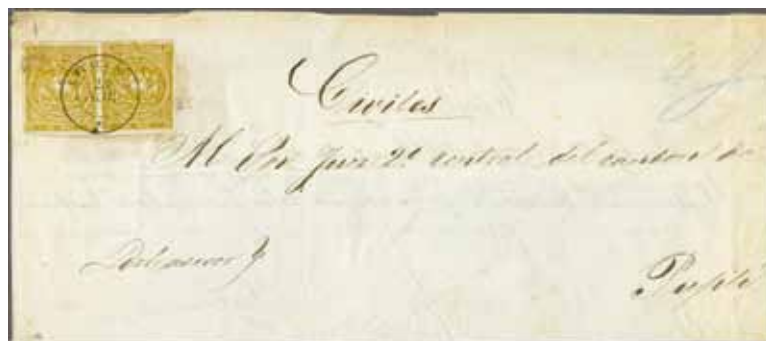
4047

4047 1 real dull yellow on white wove paper, the unused top half of the sheet (9 x 5) of the 90 subjects, with large margins all round, positions 1-9/37-45, position 4 showing the printing faults with no discerning the double frameline at base, position 35 showing the break in the NE corner square, position 45 showing the indented frame at right. Slight wrinkles and vertical crease in fourth column with minor closed tear in position 40, otherwise a fine and very rare multiple with large part or unmounted og.

(4)	田*/**	500	(€ 465)
-----	-------	-----	---------



4048



4049

4048 1 real yellow on white wove paper, a superb horizontal pair with large margins all round, used on 1870 entire letter to Chevez in Lima, Peru tied by bold strike of "Guayaquil / Franca" datestamp in blue (Jan 5). Internal docketing as received from Vapor Chile (Jan 17). Small paper hole below the pair otherwise in superb quality and a most attractive entire. Signed Holcombe.

4049 **Third Printing Group** 1871/72: 1 real deep bistre brown, a fine horizontal pair with large margins all round but some peripheral stains from gum below, used on 'turned cover' from Pujili and returned with weight "4 oz." in manuscript, tied by "Latacunga" datestamp (Nov 23) in black. Reverse showing the same franking but with two single examples, again in this scarce shade, apparently pre-cancelled with pen crosses and mailed to Latacunga. A rare and most unusual usage.

Scott

Start price
in CHFStart price
approx. €

(4)

**240**

(€ 225)

(4 var)

**400**

(€ 370)



4050



4051

4050 1 real yellow on white wove paper, a single example (position 1 on the sheet) showing the embossed Arms Seal, used with diagonally bisected example on large part cover to Ambato tied by 64 dot lozenge in black. A rare and most unusual franking

4051 1 real yellow, a single example and two vertical strips of four in a slightly worn characteristically over-inked impression, margins ample to large all round, used on circa 1869 cover and large part back to Quito rated "18 oz." in manuscript at top, tied by seven blurred strikes of "Riobamba" datestamps (Feb 18?) in red. Fresh and fine, a most attractive cover.

(4c+ 4e)

**400**

(€ 370)

(4)

**300**

(€ 280)



View of Bordeaux



Rafael Barba Jijon



4052

Scott

Start price in CHF Start price approx. €

4052 **Fourth Printing Group** 1 real yellow on white wove paper, an ill-defined coarse impression in a deep shade, paying the internal postage on 1871 mourning envelope to Bordeaux, France, tied by "3154" gros chiffres with "Quito / Franca" datestamp in red alongside (Feb 18). Reverse with British Post Office GUAYAQUIL datestamp (Feb 25) in black alongside red London transit cds (April 3). Obverse with three line dated PANAMA / TRANSIT (March 5) and framed "GB / 1F 90c." Anglo-French accountancy marking applied in London. Calais entry marking and charged "12" décimes due upon delivery. An exceptional and rare Transatlantic usage of the first issue, arriving in in France during the Commune. Signed Holcombe.

(4)



2'500 (€ 2'325)



4053



4055

- 4053** 1 real yellow on white wove paper, a single example crossed by file fold and a wonderful horizontal strip of seven showing parts of adjoining stamps at base, one stamp minor fault, used on 1872 entire letter to Lima, Peru carried at quadruple rate of 8 reales, tied by neat strikes of "Guayaquil / Franca" datestamps in red (Dec 26) with Lima arrival cds on reverse (Dec 31). The single stamp lifted for checking and is on vertically laid paper, and hinged back into original position. A remarkable franking and a most attractive cover.
Provenance: Collection Benjamin H. Homan Jnr.

Scott

Start price
in CHF Start price
approx. €

(4+ 4b)

**400**

(€ 370)



4054

- 4054** 1 real yellow-orange, a vertical strip of four in a bright shade, with "Republica del Ecuador" Coat of Arms embossed security seal on top two stamps (positions 9/18/27/36), used with single ½ real blue showing "Obscured Value Tablet" variety due to over-inking or dirt on the Plate - but a clear impression at top of stamp, all with large margins; used on folded cover front to Guaranda tied by "Riobamba" datestamps (Nov 23) in black. Corresponding manuscript weight "8½ oz." at top alongside file stitch markings. A fine and most unusual usage. Cert. Moorhouse (2003).
- 4055** 1 real yellow-orange, two horizontal pairs each with close to large margins all round, probably from different sheets with first pair from a very worn plate showing damage to the top frame and probably from the first row of the sheet, second pair in a clearer impression, tied to 1869 front of cover to Valparaíso, Chile by two strikes of "Guayaquil / Franca" datestamps (Nov 8). Faults but an unusual double rate usage. Opinion Holcombe (1995).

(4e+ 4+ 2)

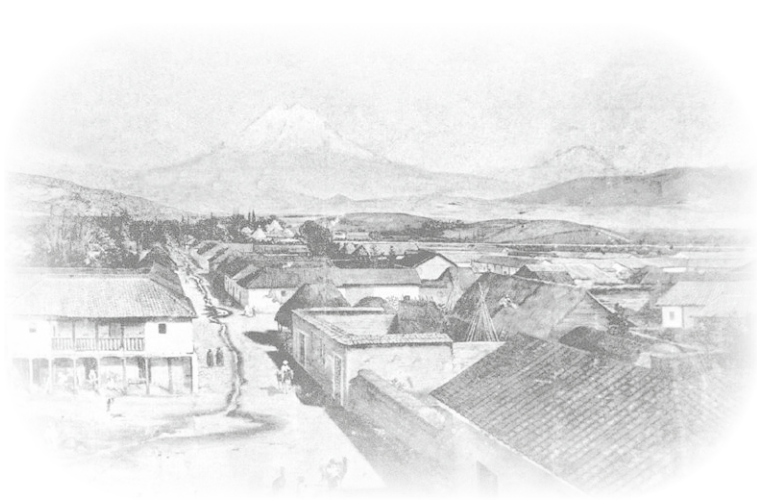
**750**

(€ 700)

(4)

**150**

(€ 140)

*View of Riobamba**Fiorenzo Longhi**Dr. Hugo Goeggel*

4056

Scott

Start price
in CHFStart price
approx. €**4056**

1 real ochre / olive yellow, two examples with touched to large margins, used on registered cover to Riobamba each stamp tied by 'Franca' dotted lozenge in black, with the 'Franca' handstamp applied at corners of the cover to denote registration and italic 'Certificacion' handstamp in black. Peripheral faults to the envelope but a great rarity, one of just two first issue registered covers recorded, and the sole example with this stamp. Cert. Moorhouse (2009).

Provenance: Collection Fiorenzo Longhi, Investphila, 25-27 Sept 2009, lot 1442.

Collection Dr. Hugo Goeggel, Corinthila sale 191, Nov 2014, lot 814.

(4a)

**5'000**

(€ 4'650)

1865/72, 1 real green on Wove paper



4057



4058



E.M. de Bustamante

4057 1 real green, a superb unused example on thin white wove paper, with part of vertical sheet margin at right, position 27 on the sheet of 90 subjects, with bulge in frameline at base to the left of "U" of "N REAL". Fresh and fine, large part og. Gi 3 = £ 275/Mi 2x = € 260/Scott = \$ 300.

4058 1 real green, fine impression on thin white wove paper, the unused block of four, positions 33-34/42-43 on the sheet of 90 subjects, position 43 showing the "Scratch outside the SE corner square", the block with large margins all round, slight hinge thin and scissor cut between the stamps, slight closed tear at base again between the stamps, but of excellent rich colour and large part og. A very rare stamp in an unused multiple.

Provenance: Collection E.M. de Bustamante, Afinsa, Madrid, May 1996, lot 34.

Scott

Start price
in CHFStart price
approx. €

(5)

*

150

(€ 140)

(5)

田*

1'500

(€ 1'395)



Position 66 "Diagonal Scratch from Centre Circle to Base"



4059

4059 1 real green, fine impression on thin white wove paper, the magnificent unused block of fourteen (7 x 2), positions 64-70/73-79 on the sheet of 90 subjects with the vertical marginal frameline at left, position 66 showing the Plate flaw "Diagonal Scratch running from the Centre Circle to Base", large margins all round and just touched on some upper stamps and the slightest of aging, otherwise faultless with excellent colour and large part or unmounted og. The largest recorded multiple of this stamp and one of the most important multiples in all South American philately.

Provenance: Collection 'Crown Point', Corinthila sale 131, Oct 2001, lot 6695.

(5)

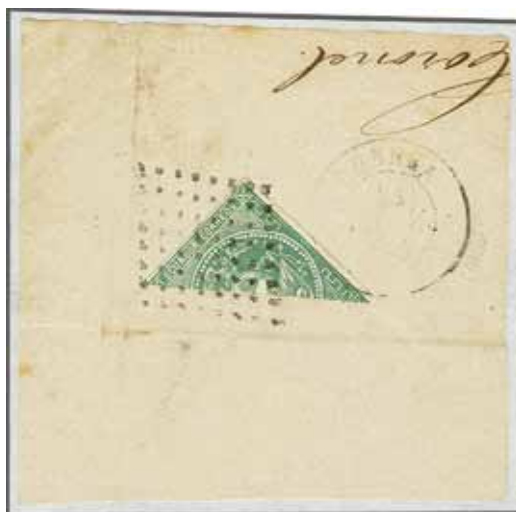
田*/**

25'000

(€ 23'250)



4060



4061

Scott

Start price
in CHF Start price
approx. €

4060 1 real grass green, a fine large margined example cancelled by the rare circular negative handstamp of OTAVALO. Exceedingly rare and a perfect impression of this wonderful handstamp.

(5)

250 (€ 235)

4061 1 real green, a diagonally bisected example used on small piece, cancelled by the 64 dot lozenge and by "Cuenca" datestamp in black. Scarce.

(5a)

△

120 (€ 110)

4062



4063

4062 1 real bright green, a superb example from right of sheet with marginal line, used on 1865 cover front to Guaranda with diagonally bisected example to pay the annotated "2 $\frac{3}{4}$ " ounce rate, both stamps neatly tied by 64 dot lozenge in black with "Ambato" datestamp below (Sept 8). Fresh and very fine, a scarce and most attractive usage.

Provenance: Harmers, London, 30 April 1996, lot 105.

Collection 'Crown Point', Corinthila sale 131 (Oct 2001), lot 6719.

(5+ 5a)

(⊠)

750 (€ 700)

4063 1 real green, **two diagonally bisected examples**, reconstituted to make the original stamp, used on 1868 cover to Quito addressed to Sra. Mercedes Jijon de Flores, the wife of the first President of Ecuador, tied by neat "Guaranda" datestamp in black (July 25). An attractive and most extraordinary usage.

(5a)

⊠

350 (€ 325)



4064

Scott

Start price
in CHFStart price
approx. €

- 4064** 1 real green, two single examples and an exceptional usage of a sheet marginal diagonal bisect on 1867 'turned' cover front to Latacunga annotated at "4 3/4 oz." in manuscript, the adhesives all tied by "Guaranda" datestamps in black (Feb 20). Reverse with exceptionally fine pair of 1 real orange-yellow tied by 64 dot lozenge cancellations in black and used back from Latacunga to Guaranda. A rare and attractive usage, we have yet to record another example of a marginal framing bisect usage on cover.

(5+ 5a+ 4)

(✉)

1'000

(€ 930)



4065



4066

- 4065** 1 real green, a fine horizontal pair in a deep shade, used on 1866 entire letter at single rate to Chavez in Lima, Peru, large margins all round and portions of adjoining stamps at top and at base, positions 40-41 on the sheet; neatly tied by "Guayaquil" datestamp (Nov 12) in black. Carried on the 'Vapor Peru' with Lima arrival cds (Nov 17) in black. A scarce and most attractive entire. Signed Holcombe.
- 4066** 1 real green, a horizontal pair, clear margins all round, used on 1868 cover to Trujillo, Peru tied by "Guayaquil / Franca" datestamp (Jan 8) in black. Fully paid at single rate to Lima with backstamp (Jan 16) on reverse; taxed for remainder of journey with manuscript "10 ¢" charge in manuscript with reverse showing dotted PAITA transit in black. Opens well for Exhibit display, some minor imperfections but very scarce. Signed G. Lamy.

(5)

(✉)

250

(€ 235)

(5)

(✉)

250

(€ 235)



4067



4068

Scott

Start price
in CHFStart price
approx. €

- 4067** 1 real green, a fine horizontal pair, positions 66-67, with position 66 showing the major Plate flaw "Diagonal Scratch from Centre Circle to Base", ample to large margins and showing portion of adjoining stamp at right, used on 19 December 1865 entire letter at single rate from Manta to Lima, Peru tied by "Guayaquil" datestamp (Dec 20) in black. Carried on the 'Vapor Chile' with Lima arrival cds (Jan 2, 1866) on reverse. A fine and rare entire - one of the earliest Foreign Destination covers of the Ecuador first issue.

Provenance: Collection Derek Bolton

Collection 'Crown Point', Corinphila sale 131, Oct 2001, lot 6698.

(5) ☒ **1'500** (€ 1'395)

- 4068** 1 real green, a horizontal pair with "Republica del Ecuador" oval Embossed Arms on left stamp, both with large margins all round, positions 89-90 with large break in right vertical frameline on the latter position and showing portion of adjoining stamp at left, used on 1866 single rate entire letter to Lima, Peru tied by "Guayaquil" datestamp (March 13) in black. Lima arrival cds (March 18). Some trivial aging due to the gum but a rare and remarkable usage with very few examples of "Arms Embossed" covers extant. Ex collections Funkhauser and Longhi.

(5b) ☒ **1'500** (€ 1'395)



4069



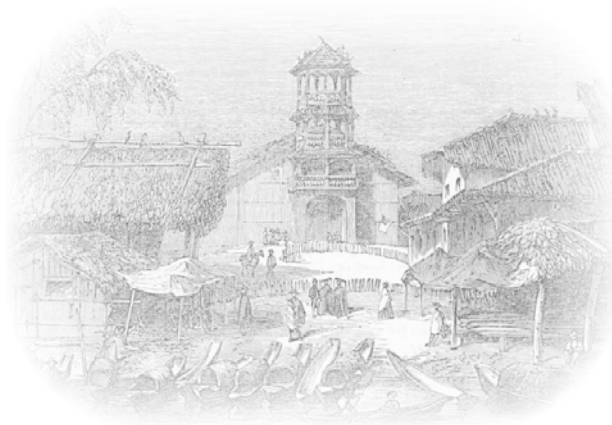
4070

- 4069** 1 real green, a vertical pair with ample to large margins all round, used on 1866 entire letter at single rate to Lima, Peru endorsed "Vapor Peruano" and cancelled by neat "Guayaquil" datestamp (April 3) in black. Reverse, slight faults, with Lima arrival cds (April 9) in black. It is unusual to find Ship endorsements on the Chavez correspondence although they are sometimes noted internally on arrival - this example is internally docketed "Vapor Santiago". An attractive entire. Signed Pfenninger.

(5) ☒ **200** (€ 185)

- 4070** 1 real green in a dry emerald shade, a horizontal strip of four used on 1865 cover to Latacunga, margins large to touched, positions 69-72 with position 71 showing the "Line through Real" Plate flaw, neatly tied by three strikes of the "Guayaquil" datestamp (June 16) in black. A most attractive cover.

(5) ☒ **300** (€ 280)



Church of Bodega in Babahoyo



Benjamin H. Homan Jr.



E.M. de Bustamante



Position 14 "Beal for Real" plate flaw



4071

Scott

Start price
in CHFStart price
approx. €

4071 1 real green, the vertical pair, positions 5/14 with the lower stamp showing "Beal for Real" plate variety, used on the famous 1866 registered cover to Quito, the stamps tied by bold BABAHoyo datestamp in black (Aug 23) and the cover with the 64 dot lozenge surrounding the address to denote registration, two strikes of italic "Certificacion" in black centrally struck and further "Babahoyo" cds at upper right. Illustrated and recorded in H.L. Lindquist article in the Collector's Club Philatelist pages 89-94. Minor cover tear at left skillfully restored and cleaned at right well away from the adhesives, but of immense rarity for the Postal Historian - the sole recorded registered cover of the Ecuador First Issue with the 1 real green - the only other registered cover bears a pair of 1 real yellow.

Reference: Illustrated in an article by H.L. Lindquist on Ecuador (copy available with the lot).

Provenance: Collection Ackerman (1937)

B.H. Homan Jr.

E. M. de Bustamante, Afinsa, Madrid, May 1996, lot 39

(5)

**20'000** (€ 18'600)



Cathedral in Ambato



4074

Scott

Start price	Start price
in CHF	approx. €

- 4074** 1 real green, the extraordinary vertical strip of nine stamps, marginal from right of sheet with portion of the vertical marginal frameline, positions 9/18/27/36/45/54/63/72/81; used with further single example of the 1 real green showing sheet margin at base, small fault, and a single early impression ½ bright blue, all tied to 1865 front of cover endorsed "21 ozs." to Latacunga by 64 dot lozenge with "Ambato" datestamps above (Nov 8). The large strip is crossed by ironed file fold otherwise in outstanding condition and strips cut this way are significantly rarer than those cut horizontally. A marvellous plating piece and a spectacular cover.

Provenance: Collection 'Crown Point', Corinthila sale 131, Oct 2001, lot 6722.

(5) (✉) **2'000** (€1'860)



4075

- 4075** 1 real green, a horizontal pair, positions 5-6 used with a wonderful strip of nine, the complete second row of the sheet, positions 10-18, all with large margins all round and neatly tied to 1865 large piece of cover to Latacunga by 64 dot lozenge in black with "Ambato" datestamp (31 Dec) alongside. Position 6 shows the "Indented Lower Frameline", position 12 shows the "Apostrophe" flaw, position 14 shows the "Beal for Real" flaw and Position shows part of the embossed "Coat of Arms" security seal. A piece in exceptional condition and of great rarity.

(5+ 5b)

△

1'200 (€1'115)



4076

Scott

Start price
in CHFStart price
approx. €

- 4076** 1 real green, a sheet marginal horizontal strip of nine stamps, positions 46-54, and a single example alongside a complete horizontal strip of eight with the first stamp only half preserved (positions 28-36) used on 1868 cloth cover from Riobamba to the High Court in Quito, all cancelled by circular "Riobamba" datestamps (Feb 8) in black. All stamps with large margins all round, position 50 showing "clubfoot" to second "R" in "Correos" flaw. An exceptional cover and a most extraordinary multiple franking.

(5)

**3'500** (€ 3'255)

4077

- 4077** 1 real green, a horizontal strip of five and a block of ten (5 x 2), with ample margins all round and first stamp on strip just touched at left, all used on 1866 somewhat toned cover to Quito endorsed "1 Libras 14 oz." at top, tied by 64 dot lozenge and by "Cuenca" datestamps (Sept 29) in black. Faults to refolded cover but an important item - *the largest block of the 1 real green recorded on letter*.

Provenance: Collection Oschmann, Heinrich Köhler, sale 363, Sept 2016, lot 1091.

(5)

**500**

(€ 465)



4078



4079

Scott

Start price
in CHFStart price
approx. €

- 4078** 1 real deep green, a block of four with large margins all round, used on 1870 legal front of wrapper to Guaranda endorsed "7½ oz." at top, the block from positions 41-42/50-51 on the sheet, with position 50 showing the "Extended R" in Correos" Plate flaw, the block with contemporary scissor cut in margin only, tied by five strikes of the "Ambato" datestamp (Nov 4) in black. An exceptional usage of a fine and very scarce multiple.

Provenance: Collection 'Crown Point', Corinthila sale 131, Oct 2001, lot 6716.

(5) (X)田

750

(€ 700)

- 4079** 1 real green, an irregular strip of three with full vertical sheet marginal frameline at right (positions 36/44-45) used with ½ real blue on greyish paper on large piece, all with large margins, centrally cancelled by 'Cartwheel' cancellation in black with corresponding "Pelileo / Franca" datestamp above (15 May, 1871) struck in red. A late usage of the 1 real green on an attractive and rare piece.

(5+ 2)

△

250

(€ 235)



View of Pillaro



4080

- 4080** 1 real green, the exceptional irregular block of seven on large 1871 legal cover to Latacunga endorsed "15 oz." in manuscript, large margins all round the upper block of six, used in combination with single 1870 ½ real grey-blue, the block being positions 10-11/19-20/28-29/37, position 20 showing breaks in the outer vertical frameline at right; all cancelled by exceptional strikes of the rare PILLARO / FRANCA datestamp (Nov 26) struck in red. Tiny scissor cut between positions 11 and 20 in margin only otherwise a remarkable and rare cover.

(5+ 2a)

田

1'500

(€ 1'395)



Position 64 "Indented Left Vertical Frameline"



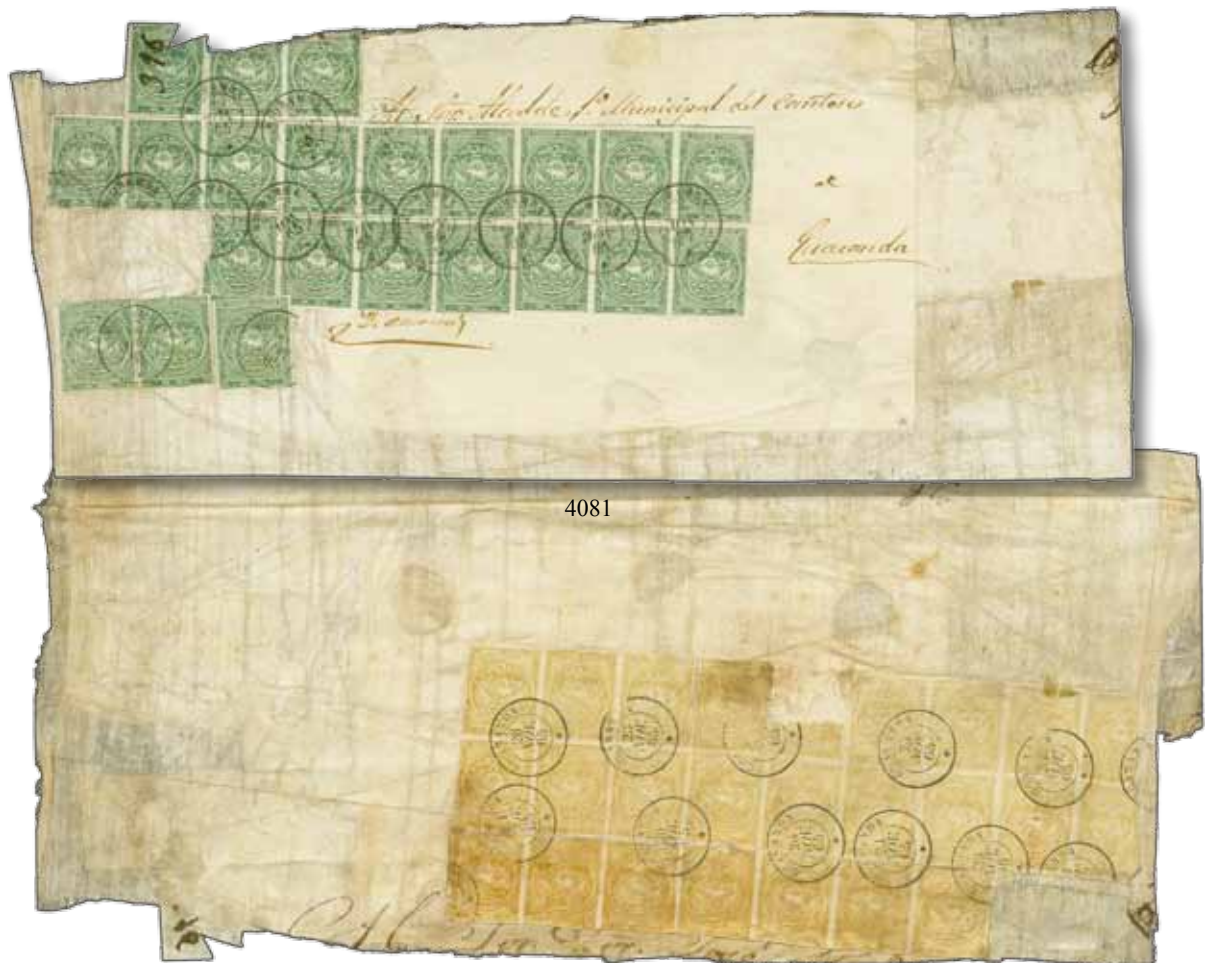
Position 6 "Diagonal Scratch from Centre Circle to Base"



Position 71 "Line through Real"



Position 81 "Break in right outer Frame"



4081

4081

Scott

Start price
in CHF

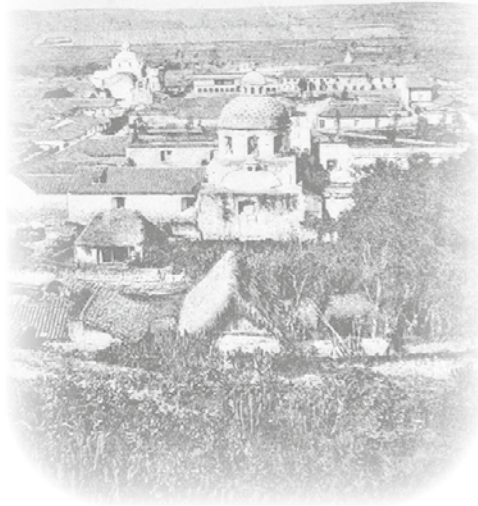
Start price
approx. €

- 4081** 1 real green, the extraordinary cover bearing the complete row of nine (positions 64-72) with position 64 with "Indented Left Vertical Frameline" flaw, position 66 with "Diagonal Scratch from Centre Circle to Base" Plate flaw and position 71 with "Line through Real" flaw, a strip of seven (positions 75-81) with position 81 showing "Break in right outer Frame", together with three further single examples and three damaged, all cancelled on large 1865 cloth cover to Guaranda by "Riobamba" datestamps in black (Nov 29). The reverse of the cover bears a block twenty-five of the 1865 1 real pale buff cancelled by "Guaranda" datestamps from the original sending (Nov 26). Despite the faults a tremendous and extraordinary usage which represents one of the largest first issue frankings and is, therefore, of great philatelic importance to Ecuadorean classic philately.

(5+3)



5'000 (€ 4'650)



View of Latacunga



4082

Scott

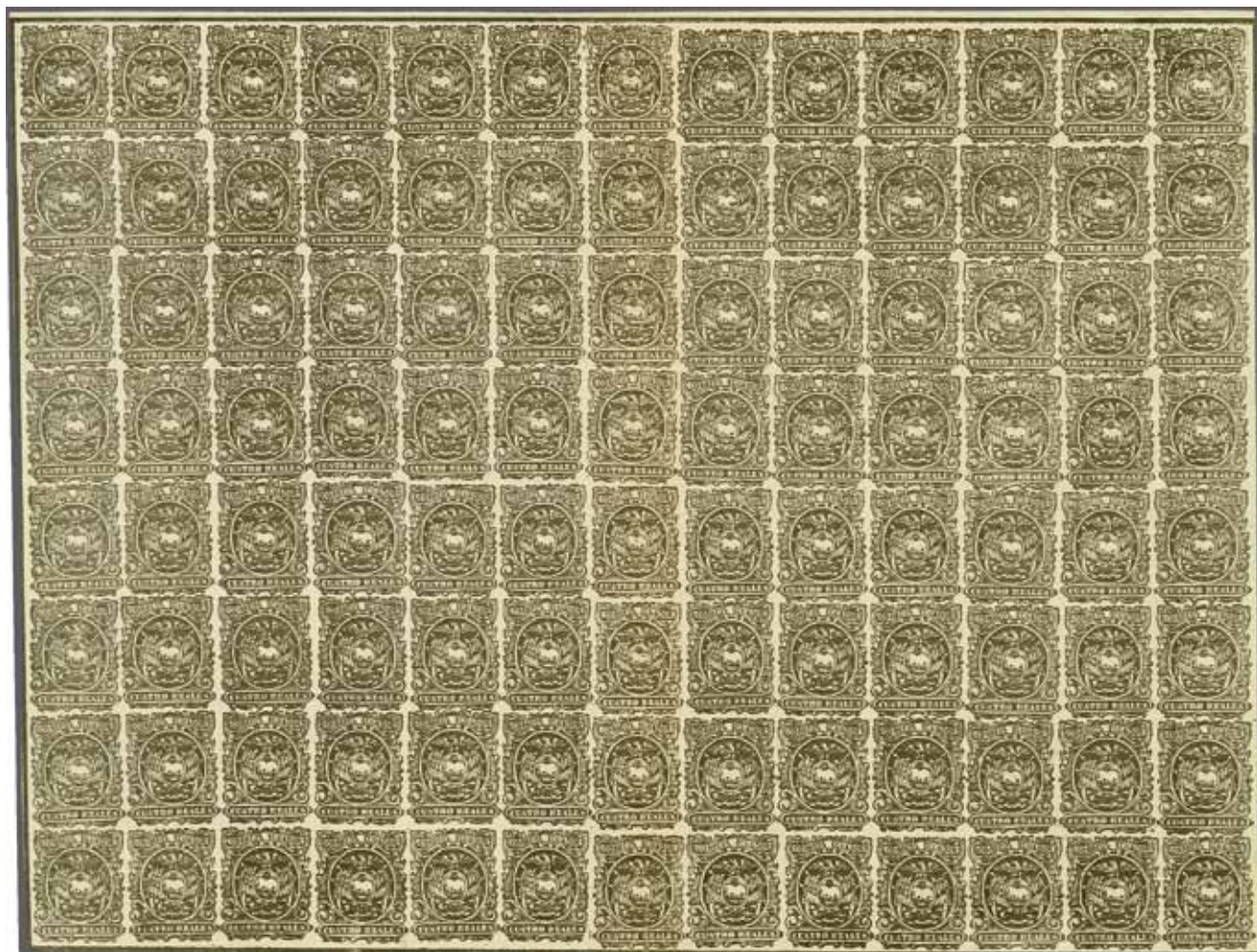
Start price
in CHFStart price
approx. €

4082 1 real green, two vertical pairs used in combination with early impression ½ real deep bright blue and 1 real buff in a corner marginal block of six from base of sheet (positions 64-65/73-74/82-83) with part of the marginal frameline at base, used on refolded wrapper to Ambato and tied by 64 dot lozenge and two strikes of "Latacunga" despatch datestamp (Oct 12) in black. A marvellous and spectacular cover proving that even towns as small as Latacunga were consigned both colours of the 1 real in the first year of issue - nevertheless this is one of but two covers recorded bearing both colours of the 1 real together and a beautiful franking.

(5+ 2+ 3)

**5'000** (€ 4'650)

1866/72, 4 reales on Wove paper



4083

Scott

Start price in CHF Start price approx. €

4083 4 reales, the complete Plate Proof sheet of 104 subjects (13 x 8), printed in dull black ink and showing the marginal horizontal and vertical framelines, exhibiting the close proximity of the stamps and the consequent difficulty in finding four margin examples. Vertical creases in the sixth and seventh rows not detracting from the frontal appearance, position 98 with closed tear at base. A major benefit to the plating of the issue and a remarkable and extremely rare sheet.

Note: From this sheet all the Plate flaws are evident: Position 10 with the "Broad Oval" - almost a circular wide frame to the vignette, this flaw repeated on positions 19 and 50; with position 96 being the narrowest stamp on the sheet. There is a similar Proof sheet illustrated in 'La Primera Emision de Sellos Postales del Ecuador' published by the Central Bank of Ecuador (1982), with plating notes, on pages 55-56.

(6 Proof) 田(*) **2'500** (€ 2'325)



4084



4085

4084 4 reales red, an unused top marginal example, position 8 on the sheet of 104 subjects, showing the marginal frameline at top, clear margins all round, fresh and fine unused without gum.

4085 4 reales red, a fine unused horizontal pair in a deep shade, positions 18-19 on the sheet of 104 subjects, with right hand stamp showing broad oval around the central vignette (occurs just 4 times on the sheet of 104 subjects), large margins for this scarce stamp, trace of hinge thin and minor diagonal bend not affecting the superb appearance, large part og. Rare Gi 4a = £ 750+/Scott = \$ 1'000+.

Note: The 4 reales red was printed in sheets of 104 stamps - 8 horizontal rows of 13 subjects. The design, with the exception of the vignette appears to have been copied from the Mexico 1856 Hidalgo issue.

Scott

Start price
in CHFStart price
approx. €

(6)

(*)

180

(€ 165)

(6)

*

400

(€ 370)



4086

4086 4 reales red, two wonderful unused blocks of four, marginal from top of sheet and originally forming a block of eight, positions 10-13 / 23-26 and thus corner marginal from top right of the sheet of 104; with marginal rule at top and each block of vibrant fresh colour, position 10 showing the broad oval around the central vignette (only found four times of the sheet of 104 subjects); each with minor gum stain and slight creasing of absolutely no significance, large part og. Illustrated in Hugo Goeggel 'Edition D'Or' XXXIII on page 107. Superb multiples in the foremost Exhibition quality.

(6)

田*

5'000

(€ 4'650)



4087



Brian Moorhouse

4087 4 reales red, a used example of rich colour, clear to large margins all round, tied to small piece by complete "Quito / Franca" datestamp (2 Junio 1866) in black; *the earliest recorded date of use*. An extremely rare and important piece.
Provenance: Brian Moorhouse.

(6)

△

2'500

(€ 2'325)



4088



4089

Scott	Start price in CHF	Start price approx. €
(6)	150	(€ 140)
(6) 田	400	(€ 370)

- 4088** 4 reales red, a fine used example in a bright shade, from right of sheet with vertical marginal frameline, position 91, cancelled by light strike of the 64 dot lozenge in black. Rare so fine.
- 4089** 4 reales red, a used irregular block of five in a rosy shade, from top of sheet showing horizontal marginal frameline, positions 7-8/20-22, cancelled by 64 dot lozenge in black. Slight scissor cut between pos. 8/21 as usual and upper left stamp with inclusion and closed tear but a rare used marginal multiple.



View of Riobamba



4090

- 4090** 4 reales red, a soft printing in a pale shade, a used block of eight (4 x 2), positions 74-77/87-90, slight inclusion at right and touched at upper right, one stamp with thin and three stamps with closed tears but of great visual appeal, cancelled by eight strikes of the "Riobamba" datestamp (Nov 9) in red (rare) and 'Cancella' in manuscript. Despite faults a stunning block, the second largest recorded used multiple of this iconic stamp.

(6)	田	2'500	(€ 2'325)
-----	---	-------	-----------



E.M. de Bustamante

4091

		Scott		Start price in CHF	Start price approx. €
4091	4 reales red, the famous used block of nine in a rose-red shade on thin white wove paper, positions 43/55-56/68-69/81-82/94-95 on the sheet of 104 subjects, scissor cut vertically between positions 55-56 and fault on position 81, all cancelled by six strikes of the 64 dot lozenge in black. Despite the imperfections, a marvellous block of great rarity, this being the largest recorded used multiple of this stamp. <i>Provenance: Collection E.M. de Bustamante, Afinsa, Madrid, May 1996, lot 98.</i>				
		(6)	田	7'500	(€ 6'975)



4092



4093

Scott

Start price
in CHFStart price
approx. €

4092 4 reales red, a used example with good margins all round, used on 1869 cover to Guaranda, neatly cancelled by "Ambato" datestamp in black (Feb 21). The stamp carefully lifted for checking and hinged back into original position, the reverse showing part manuscript '8 oz.'. A scarce and attractive cover.

(6)

**600**

(€ 560)

4093 4 reales red, a superb used example from base of sheet showing the marginal frameline and portion of adjoining stamp at top, position 95, used on 1871 entire letter at double rate from Guayaquil to Chavez in Lima, Peru tied by scarce usage of the dotted FRANCA lozenge in black. Reverse with Lima arrival cds (March 2) showing the '2' inverted. A delightful and very rare franking.

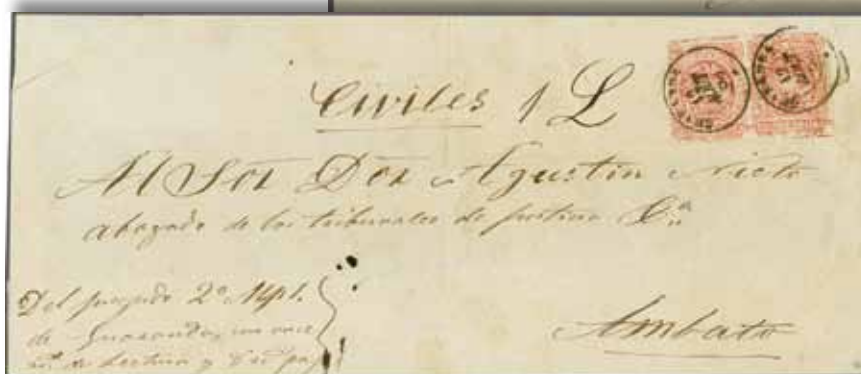
(6)

**850**

(€ 790)



4095



4094

4094 4 reales red, a soft printing in a pale shade, a superb large margined horizontal pair, used on 1868 cover and part back to Ambato, slight repair at upper left of cover for display purposes and well away from the adhesives, cover endorsed "1 L" (Libras) and thus correctly franked for 16 ounces at 8 reales; tied by neat "Guaranda" datestamps (Aug 12) in black. A scarce and most attractive franking.

(6)

**1'000**

(€ 930)

4095 4 reales red, a fine used example on archive dated 1873 cover front to Quito endorsed 'Civiles' and 'con 4\$ 5½ rs.', with weight annotation '13 oz.' at top, used with 1870/72 ½ real blue on blue paper and scarce 1870/72 1 real yellow, two examples, each on quadrille paper, neatly cancelled by "Latacunga" datestamps in black (Aug 25). Slight file fold affects one 1 real but a most attractive and rare three colour franking.

(6+ 1+ 7)

**500**

(€ 465)



4096

- 4096** 4 reales red, a soft printing in a pale shade, fine horizontal pair, positions 51-52, sharing a small piece with fine 1865 1 real orange, all tied by "Quito / Franca" datestamps (Oct 3) in black. Rare and early usage of the issue and a most appealing piece.

Scott

Start price
in CHFStart price
approx. €

(6+ 3a)

△

350

(€ 325)



Cathedral in Quito



4097

- 4097** 4 reales red, a fine single example and a horizontal strip of five used on cloth cover front to Guaranda in combination with 1865/72 1 real orange-yellow in a horizontal strip of three, all stamps with good margins for these adhesives, tied by nine strikes of the "3154" gros chiffres handstamps of Quito in black. Manuscript weight at right "3 libras 6 oz." (54 ounces) for rate of 27 reales fully paid. The 4 reales strip with the shade changing from rose to brown-red, a marvellous and rare franking for the specialist. Cert. Behr (2015), Moorhouse (2014).

Provenance: Harmers, London, 30 April 1996, lot 135.

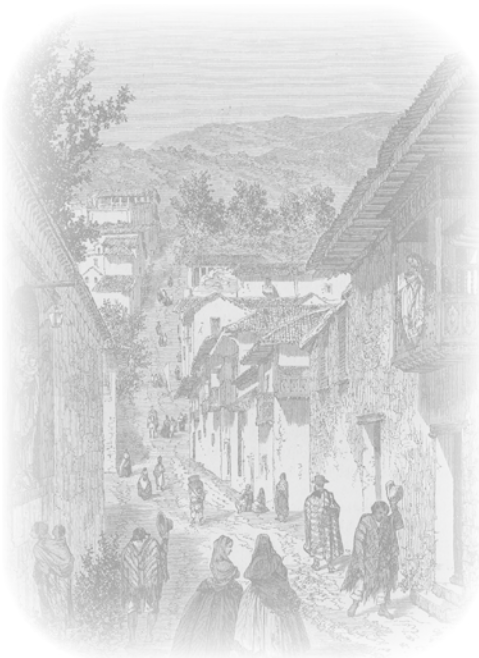
Collection Fiorenzo Longhi, Investphila, 17-18 April 2010, lot 533.

(6+ 4)

(⊠)

3'000

(€ 2'790)



Street scene of Quito



4098

Scott
Start price in CHF
Start price approx. €

4098 4 reales red, a single example and a magnificent horizontal strip of five, used with 1870/72 1 real yellow single and horizontal pair on linen judicial 1871 cover front with stitch holes at top, mailed to Guaranda endorsed "3 lb. 6 oz." (54 Oz.), all tied by "3154" gros chiffres - the first six stamps (4 reales) all cancelled in blue - the last four stamps including one 4 reales cancelled by the "3154" gros chiffres in red - with "Quito / Franca" despatch datestamp (June 7) at right in red. As far as this describer is aware, the sole recorded usage of the "3154" gros chiffres struck in blue. Some staining and creasing to the linen cover but a most attractive and spectacular 27 reales franking. Cert. Moorhouse (2009).
Provenance: Collection Fiorenzo Longhi, Investphila, 17-18 April 2010, lot 534.

(6+ 4) (⊠) **5'000** (€ 4'650)



4099

4099 4 reales red, a fine horizontal pair in a rich bright shade, used on 1872 sensibly refolded cover to Latacunga, in combination with 1 real yellow single and horizontal pair, with weight annotation "1 libras 6 oz." at right, all tied by "3154" gros chiffres cancellations (formerly of Rixheim), with "Quito / Franca" datestamp in red at right (Feb 17). A very scarce and attractive high franking.

Scott

Start price
in CHFStart price
approx. €

(6+ 4)

**1'200** (€ 1'115)

4100

4100 4 reales red, a single example and a horizontal strip of four marginal from base of sheet with part of the horizontal frameline (positions 98-101), used with 1865 1 real green and ½ real blue on cover front and part back to Guaranda annotated "43 oz." at top, cancelled by four strikes of the 64 dot lozenge in black. A magnificent and most attractive franking.

(6+ 5+ 2)

**1'500** (€ 1'395)



4101

- 4101** 4 reales red, a marginal example from base of sheet, position 96, used in small piece in combination with 1872 1 real yellow on blue paper in a horizontal pair (also marginal with part frameline at right, positions 62-63), tied by 64 dot lozenge and by "Guaranda" datestamp (Feb 25) in black. An unusual and appealing piece.

Scott

Start price
in CHF Start price
approx. €

(6+ 8)

△

175 (€ 165)

4102



4103

- 4102** 4 reales brown-red, an unused example of rich colour and large margins all round, position 94 on the sheet with horizontal marginal frameline at base, part og. Scarce so fine Gi 4 = £ 375/ Mi. 4 = e 400/Scott = \$500.

(6a)

*

175 (€ 165)

- 4103** 4 reales brown-red, a used example in a bright rich shade, position 40 on the sheet with vertical marginal frameline at left, cancelled by central "Ambato" datestamp (March 15) in black. Rare and delightful so fine.

(6a)

200 (€ 185)

4104

- 4104** 4 reales brown-red, the used block of four in a deep shade, positions 12-13/25-26 and thus from the upper right corner of the sheet, with full embossed oval Coat of Arms security seal on reverse impressed sideways, cancelled lightly by red circular datestamp and by two heavy manuscript pen lines, the upper pair with closed tears otherwise a multiple of delightful colour and of great scarcity Scott = \$ 2'200+.

(6a+ 6e)

田

1'000 (€ 930)



4105

*E.M. de Bustamante**School in Latacunga*

- 4105** 4 reales brown-red, two vertical strips of four in a bright shade, both from the left hand side of the sheet and thus the entire vertical column, positions 1/14/27/40/53/6/79/82; formerly used together and cancelled by over-inked Latacunga (?) datestamps in black, both strips extremely fine and without the usual scissor cuts between, traces of bend on one from the original parcel and cancellation shows through the somewhat thin paper. Exceptional and very rare, a marvellous pair of multiples.
Provenance: Collection E.M. de Bustamante, Afinsa, Madrid, May 1996, lot 93.

Scott

Start price
in CHFStart price
approx. €

(6a)

4'000 (€ 3'720)



4106

Scott

Start price
in CHF Start price
approx. €

- 4106** 4 reales brown-red, a fine horizontal pair on refolded 1870 cover front to Riobamba annotated "1 libras ½ oz." at right, used in combination with ½ real grey-blue tied by "Quito / Franca" datestamps (Nov 23) in black. Corner repair to cover at right for better Exhibit display and well away from the adhesives. A fine and attractive high franking.

(6a+ 2a)

**600**

(€ 560)



4107

- 4107** 4 reales brown-red, a superb marginal pair in a deep shade and showing the vertical marginal frameline at left, positions 66/79, used on large refolded 1872 cover to Cuenca in combination with 1870 ½ real blue on surface blued paper and 1 real dull yellow, positions 71-72, with position 71 showing the major Plate flaw "Line through Real"; all tied by "Loja" datestamps (Oct 5) in black. The ½ real with vertical crease but despite the small imperfections a rare and not unattractive three colour franking.

(6a+ 4+ 7)

**500**

(€ 465)



4108

- 4108** 4 reales brown-red, a horizontal strip of four in a vibrant scarlet shade with large margins all round, positions 62-65, used on 1868 large cloth cover front to Riobamba, in combination with 1865 1 real green, a single and horizontal pair (positions 86-87) all tied by "Quito / Franca" datestamps in black (April 15). Marked at upper right with weight "2 Libras 7 oz." and the cover with one medio real missing, however a dramatic and wonderful display piece with a 19 reales franking. An exhibition item of great importance for the connoisseur.

(6a+ 5)

**3'000**

(€ 2'790)



4109

Scott

Start price
in CHFStart price
approx. €

- 4109** 4 reales bright red, a diagonal bisect, lower right half, used on 1869 cover to Islay, Peru via Arequipa tied by "Guayaquil / Franca" datestamp (April 26) in red. Fully paid at single rate to Callao / Lima with reverse showing 'Arequipa' cds (May 7) and dotted YSLAI arrival, both in black. The datestamp over-inked and seemingly untaxed on arrival for internal delivery, nevertheless an attractive and rare bisected usage. Cert. Moorhouse (2004) Scott = \$ 1'600.

(6d)

**600**

(€ 560)



4110

- 4110** 4 reales brown-red, a diagonally bisected used example, lower right half, on 1869 cover to Chavez in Lima, Peru to pay the single 2 reales rate; neatly tied by "Guayaquil / Franca" datestamp (Sept 26) in blue. Reverse with Lima arrival cds (Oct 1) in black. A charming and rare entire in the foremost quality.
Note: The Bustamante collection, lot 94, shows the other half of this stamp used on the same day. The Caspary collection also housed two bisected 4 reales covers mailed on the same day.

(6d)

**1'200**

(€ 1'115)

1866, 4 reales printed on Both Sides



Printer, Manuel Rivadeneira



Reverse

4111

Scott

Start price in CHF Start price approx. €

4111 4 reales red, a fine unused block of six (3 x 2) with variety "Printed on Both Sides", the obverse of fine colour and large margins all round, positions 21-23/34-36, the reverse in the characteristic brown-red shade, fresh and very fine, large part og. A superbly attractive and rare multiple, the only other block this size is owned by the United States Postal Museum, thus this multiple is the largest in private hands. A major rarity of Ecuadorean Classic Philately. Signed Holcombe.
Provenance: Corinthila sale 90, October 1994, lot 7174.

(6c) 田* **7'500** (€ 6'975)



4112

Scott

Start price
in CHF

Start price
approx. €

- 4112** 4 reales brown-red, variety "Printed Both Sides", the famous usage on circa 1869 large part cover to Riobamba, in combination with 1865/72 1 real yellow in a horizontal strip of three, scissor cut in margin between first and second stamp, all tied by "Quito / Franca" datestamps (Jan 11) in red. Reverse of the envelope has a complete oval embossed "Republica del Ecuador / Coat of Arms" seal (as utilised on the first issue stamps). The two stamps lifted for examination and hinged back into place, a most attractive and astonishingly rare usage - *just two part covers are known bearing this variety*. A wonderful cover and one of the key pieces of Ecuadorean classic philately. Cert. Moorhouse (2016).
Reference: Illustrated in the 'Extracts from the Dr. Arthur K.M. Woo Collections' on page 42.
Provenance: Collection Dr. Arthur K. M. Woo.

(6c+ 4)



15'000 (€ 13'950)

1866, 4 reales on Greenish paper



Benjamin H. Homan Jr.



Dr. Hugo Goeggel



4113

Scott

Start price
in CHF

Start price
approx. €

4113 4 reales brown-red on greenish paper, a deep shade and the paper evidently tinted, the exceptional horizontal pair with vertical frameline at right (positions 38-39 on the sheet), tied to 1868 entire letter at quadruple rate to Lima by "Guayaquil" cds June 10) in black. Manuscript '2' (reales) due to pay upon receipt with arrival datestamp of Lima (June 19). An exceptionally rare entire and very probably unique in private hands.

Provenance: Collection Benjamin H. Homan Jr., Payton, Isleham.

Collection Dr. Hugo Goeggel, Corinthila sale 178, 27 Feb 2013, lot 4245.

(6a var)



7'500 (€ 6'975)

1871/72, ½ real and 1 real on Blue-Surface paper



4114

Scott

Start price in CHF Start price approx. €

- 4114 Fifth Printing Group** ½ real deep dull ultramarine, the unused block of twenty-five subjects, positions 21-24/32-36/45-48/57-60/69-72; in a clear rich shade (without the usual surface blueing of the wove paper), with vertical marginal rule at right, fresh and fine with **ROLLAND Watermark** covering marginal positions 24/36/48/60 and 72 at right. Some minor horizontal creasing but with large part to full original gum. Unique and beautiful multiple.

(7) 田*/**

5'000 (€ 4'650)



4115

Scott

Start price	Start price
in CHF	approx. €

- 4115** ½ real bright blue on surfaced blued paper, the remarkable unused half sheet of forty-two (6 x 7), positions 7-12/19-24/31-36/43-48/55-60/67-72/79-84; with position 70 showing large break in right frameline, some minor areas of colour loss as usual on this issue, position 55 with small closed tear, **position 84 at lower right of the multiple with embossed BATH seal of the supplier of the paper** (and ubiquitously found on many old entire letters). A late printing with many clichés now misaligned, fresh and very fine with large part or unmounted og.; margins all round and believed entirely unique. Cert. Moorhouse (2011).
*Provenance: Collection Funkhauser
 Collection Longhi.*

(7) 田*/**

1'500 (€ 1'395)



4116

Scott

Start price
in CHF Start price
approx. €

- 4116** 1 real ultramarine on blued paper, lower marginal example, used on sheet of (2 + 2 reales) Papel Sellado, boldly cancelled by circular Floral handstamp in black with PELILEO / FRANCA datestamp (15 April, 1872) in red alongside. Folded well for Exhibit display, the ½ real franking paid for up to 1 ounce of documents - the same as for Postage.
Provenance: Collection Dr. Hugo Goeggel, Corinthila sale 191, Nov 2014, lot 833.

(7) (⊠) **300** (€ 280)



4117



4118

- 4117** **Fourth Printing Group** 1 real yellow, coarse printing on greyish blued paper, a used block of six (2 x 3) from base of sheet with horizontal marginal frameline, positions 68-69/77-78/86-87, grazed to large margins all round, manuscript cancelled (probably at Guaranda) but with closed tear at base, pinhole and slight thin due to cancellation. Nevertheless a very rare multiple with few known on this paper.
- 4118** 1 real yellow on blued paper, a fine horizontal pair and a vertical pair, the latter just touched at top, used on 1872 entire letter at double rate from Guayaquil to Chaves in Lima, Peru and tied by bold strikes of dotted FRANCA lozenge in black. Manuscript "2" reales in blue crayon to denote the amount due from the recipient. Reverse with Lima arrival cds (Jan 31) in black. Mention is made in the letter of the PSNC Steamer 'Vapor Chile'. A scarce and attractive entire.

(8) ⊠ **140** (€ 130)

(8) ⊠ **400** (€ 370)



Alfred H. Caspary



4119

Scott

Start price
in CHFStart price
approx. €

4119 1 real yellow on surface blued paper, the magnificent block of six (3 x 2) on 4 December 1871 entire letter to Lima, Peru at triple rate, margins just touched to huge on two sides, tied by two strikes of dotted FRANCA lozenge in black. Slight ironed file fold at top of entire, with crayon '2' for Peruvian double rate, Lima arrival cds (Dec 11) in black on reverse. An astonishing entire, *the largest known block of the 1 real on surfaced blued paper recorded on letter*. Cert. Moorhouse (2009).

Provenance: Collection Alfred H. Caspary, Harmers, New York, 4 June 1958, lot 1021.

Collection Fiorenzo Longhi, Investphila, 17-18 April 2010, lot 512.

Collection Fiorenzo Longhi, Spink, Lugano, 7 June 2014, ex lot 111.

(8) ☒ ☒

3'500 (€ 3'255)

Unlisted - 1873, 1 real on 'Exercise Book Paper'



4120

Scott
Start price in CHF Start price approx. €

4120 **Fourth Printing Group** 1 real pale orange on "Exercise Book" paper, two unused blocks of four, rejoined to form the lower right corner block, positions 62-63/71-72 and 80-81/89-90, with the final stamp showing the rounded SE corner; vertical frameline at right with thin inner frameline alongside; the exercise paper thin blued lines are barely visible on the front or reverse, however the reverse is unusually heavily gummed for any Ecuadorean first issue adhesive and the easiest way to identify this stamp - just two sheets were formerly held in the Stanley Gibbons reference collection hence their listing (Gi. 8). Faults to the multiple with closed marginal tear on the upper block and gum; see page on face but very rare.

(Unlisted) 田* **1'000** (€ 930)