

# English Silver Boxes

## Victorian Silver Boxes



4214



4215

- 4214** 1892: Birmingham - a very fine Victorian 'D&L' marked silver box, heavily embossed throughout with attractive Sedan chair scenery on the hinged lid on top, opening for two sloped compartments, fine and rare.
- 4215** 1894: Birmingham, attractive Victorian twin compartment silver box, fluted diagonally and flanged edge to base, with hinged lid at top opening to two sloped compartments, few trivial nicks otherwise fine and scarce.

Start price  
in CHF

Start price  
approx. €

**250** (€ 230)

**200** (€ 185)



4216



4217

- 4216** 1897: Birmingham single compartment desk type box with decorated base and cover insert with glass window. Fine.
- 4217** 1897: Chester, a very fine Victorian stamp box by 'Stokes & Ireland Ltd.' marked 'SIL.D' with finely hammered finish all round, leaving monogram 'M.A.' free, the hinged lid opening to loosely inserted three gilded sloped compartments.

**180** (€ 165)

**250** (€ 230)



4218



4219

- 4218** 1899: Chester, very fine Victorian stamp box by 'Stokes & Ireland Ltd' marked 'SIL.D' with finely hammered finish all round, leaving Lion Emblem 'UTO POSSIDETIS.' (lit. 'as you possess') free, the hinged lid reveals two gilded sloped compartments. Fine and rare.
- 4219** 1899: Birmingham, two compartment box on balled feet by 'M. BROS' (Mappin Brothers) plain design with hinged lid at top with two windows (without glass), opening to two concave compartments, fine and attractive.

Start price  
in CHF

Start price  
approx. €

**250** (€ 230)

**200** (€ 185)



4220



4221

- 4220** 1889: Birmingham, twin compartment case with embossed silver plate and ivory insert, all three parts attached by single loop.
- 4221** 1899: Square single compartment stamp box standing on four balled feet, with hinged lid on top and stamp behind the glass window.

**120** (€ 110)

**120** (€ 110)



4222



4223

- 4222** 1900ca.: Combined vesta/stamp case in Sterling silver with ring attachment, top hinged to side and opens to vesta section with additional hinged 'door' on front, which opens to the stamp compartment. Fine and scarce.
- 4223** 1900ca.: Victorian Stamp and Sovereign case combined, plain pocket case opens to guided interior, with sprung loaded dispense for stamps, half-sovereigns and sovereigns, closing mechanism defective, otherwise fine and scarce.

Start price in CHF	Start price approx. €
<b>300</b>	(€ 275)
<b>300</b>	(€ 275)



4224

- 4224** 1903: Chester, novelty box in the form of a miniature coal shuttle, the hinged lid at front with a single glass window (small crack at upper left) opening to a single compartment, marked on reverse 'Rd 430769'.

<b>150</b>	(€ 140)
------------	---------

## Edwardian Stamp Boxes



4225



4226

- 4225** 1901: Birmingham - Edwardian triple sectioned casket style box on ball feet, marked 'L&S' (Levi & Salaman) with decoratively edged lid containing three glass windows displaying specimen stamps. Despite two cracked glasses, a most attractive piece.
- 4226** 1901: Birmingham, Rare solid Sterling Silver Card and Stamp combination case made by William Thorneywork stamped 'W\*T' with very fine engraved floral and curlique design on spring loaded hinged lid, opens to guilded interior with two small compartments mounted on lid, full length compartment at base.

Start price  
in CHF

Start price  
approx. €

**150** (€ 140)

**250** (€ 230)



4227



4228

- 4227** 1901 ca.: Stamp and Sovereign case combined, engraved throughout with floral and curlique scrolls, with ring attachment and push-button catch to access the spring loaded stamp and coin compartments. Fine.
- 4228** 1901 ca.: Stamp and sovereign case combined, engraved throughout with floral and curlique scrolls, with ring attachment and push-button catch to access the spring loaded stamp and coin compartments. Fine.

**300** (€ 275)

**300** (€ 275)



4229



4230

- 4229** 1902: 'A.J.' twin-compartment envelope-type stamp case with flap lid, attractive and elaborate foliate scrollwork on front with uninscribed cartouche on reverse. Fine.
- 4230** 1902 ca.: Cylindrical shape 925 Sterling silver stamp dispenser 62 mm. high, marked 'EMPEKA EB' with hinged lid with thumb piece opening, fine and scarce.

Start price  
in CHF

Start price  
approx. €

**120** (€ 110)

**200** (€ 185)



4231



4232

- 4231** 1903 Birmingham, small double sided envelope box, embossed on one side '½ D', the flap lid on reverse with '1 D', fine.
- 4232** 1904: Birmingham, silver and leather three compartment box and moistener combined marked 'CBP', the 'Bordeaux' red covered base with silver mounted hinged lid at top with three windows opening to one compartment (glass and insert missing), the front mounted with a silver collar surrounding the glass roller for moistening the stamps. Despite some wear a most unusual combination.

**150** (€ 140)

**400** (€ 370)



4233



4234

- 4233** 1904: Birmingham double sided stamp case by Gourdel Vales & Co., the hinged lids at either side neatly enamelled in green, the other in red, showing King Edward VII ½ d. and 1 d. red, with ring attachment on top. Fine and rare.
- 4234** 1904: Birmingham, small double sided envelope box stamped 'PROVPAT' and 'GV&Co.', embossed on one side '½ D' in green enamel, the flap lid on reverse with '1 D' enamelled in red, fine and scarce.

Start price  
in CHF

Start price  
approx. €

**300** (€ 275)

**120** (€ 110)



4235



4236

- 4235** 1905: Birmingham, small envelope case with ring attachment, embossed to face with laureate head of King Edward VII on reverse, some denting but scarce.
- 4236** 1905: Birmingham, stamp booklet holder, plain flat design with oval cut-out to show the Cypher on the front page of the booklet, stamped 'Rd 429424', fine.

**120** (€ 110)

**120** (€ 110)





4237



4238

- 4237** 1905 ca.: London Small 925 Sterling silver two compartment stamp box in the form of a Ladies handbag with purse type clasp and attached delicate silver chain, engraved floral design on both sides and marked 'AN'. Most unusual and scarce.
- 4238** 1905: Birmingham, silver miniature letter box with decorative letter slit on front, hinged lid engraved 'Stamps' on top, fine and scarce (45 mm. high).

Start price  
in CHF

Start price  
approx. €

**200** (€ 185)

**250** (€ 230)



4239

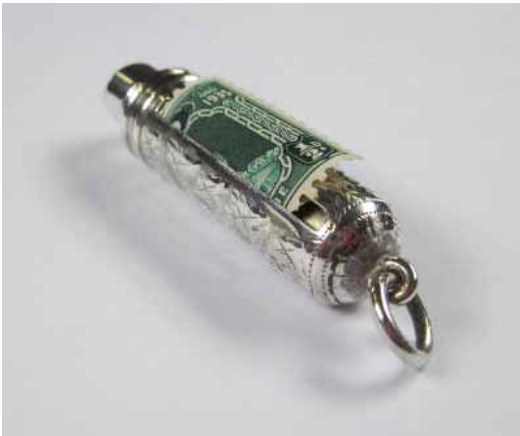


4240

- 4239** 1905 ca.: A very fine Williams (Birmingham) Ltd. silver box on ball feet with decoratively embossed sedan chair scenery on the hinged lid at top, opening to two compartments, fine and superb.
- 4240** 1905 ca.: "STERLING SILVER" patterned compact combining stamp roll dispenser, propelling pencil and ink pen nib, fine and scarce.

**350** (€ 320)

**300** (€ 275)



4241



4242

- 4241** 1905ca.: 'A.M.Co STERLING SILVER' - Novelty coil dispenser in the form of a whistle with engraved floral design, the plain body with a slot in the side for dispensing the stamps by tuning the top. Fine and most unusual.
- 4242** 1905: Patent flat case, sliding lid opens to two stamp compartments with green glass stone at floral front centre division, and uninscribed cartouche.

Start price  
in CHF

Start price  
approx. €

**200** (€ 185)

**150** (€ 140)



4243

- 4243** 1906: Birmingham, silver and glass two compartment box, ink-well and pocket watch holder combined by John Grinsell & Sons, the glass base mounted with a silver collar and lid housing a silver pocket watch at back opening to a single well, the front mounted with a silver collar and lid opening to two glass sloped compartments, with glass pen rest at front. Very fine and rare.

**1'500** (€ 1'380)





4244



4245

- 4244** 1906: Birmingham, small vesta and stamp case marked 'W.L.0 (probably William Light of Birmingham) with curlique scrolls and stamp compartment mounted on front, the lift off lid at top attached by a single loop, fine and unususal.
- 4245** 1906: Chester, a fine silver and glass two compartment stamp box and glass moistener (roller) combined, marked 'JD/WD' by James Deakin & Sons, the glass base with silver banding around the edge, opposite two silver hinge mounted lids opening separate concave stamp compartments, standing on curved silver wire skate blades. Most attractive and unusual.

Start price in CHF	Start price approx. €
150	(€ 140)
500	(€ 460)



4246

- 4246** 1906: Lantz's silver stamp dispenser by William Hornby, marked 'WH' and 'PATENT', the handle forming a water sprinkler to dampen the envelope before applying the stamp by plunging the handle. Fine and very rare.

500	(€ 460)
-----	---------



4247



4248

- 4247** 1906: Single compartment stamp case by John Rotherham (a case-maker of the watch makers Rotherham & Son), pocket watch style design with purse type clasp at top, the front inscribed 'Stamps' and with monogram on reverse, opening to a single compartment, fine and scarce.
- 4248** 1906ca.: Small 925 Sterling silver envelope-style stamp case with ring attachment, engraved by floral design on front and reverse.

Start price  
in CHF

Start price  
approx. €

**300** (€ 275)

**120** (€ 110)



4249



4250

- 4249** 1906ca.: Small 925 Sterling silver envelope-style stamp case with ring attachment with engraved floral design on front and reverse.
- 4250** 1906ca.: Small Sterling silver envelope-style stamp case with ring attachment at left.

**100** (€ 90)

**80** (€ 75)



4251



4252

- 4251** 1906ca.: Small 925 Sterling silver envelope-style stamp case with ring attachment, engraved floral design on front flap and foliate scrolls on reverse.
- 4252** 1906 ca.: Small 'STERLING 's' 0893' stamped pocket stamp case with clasp at right, front with engraved monogram (slight dents), inside with a stamp clip on either side.

Start price  
in CHF

Start price  
approx. €

**100** (€ 90)

**100** (€ 90)



4253



4254

- 4253** 1907 Chester, plain slightly curved pocket case, opens to guilDED interior, one side with spring loaded dispensers for stamps, half Sovereigns and Sovereigns, in addition to fancy sprung clip, compartment for visiting cards on opposite side, on front with engraved "CAPT. E. TEMPERLEY 6th NORTHd. FUSILIERS", a few trivial dents, otherwise fine.  
*Ex Harmers of London, 1989, lot 1037.*
- 4254** 1908: A most unusual Edwardian, Silver Capstan type Inkwell with a hinged top revealing a clear glass liner in the well and with a small pull-out stamp drawer set into edge of base, a few tiny blemishes and main hallmark worn, not detracting in any way. A lovely inkwell in great antique condition.

**300** (€ 275)

**250** (€ 230)



4255

- 4255** 1908: Sterling silver novelty box on ball feet, with wooden silver fronted drawer with two compartments, on the top surmounted with a cute silver piggy and inserted sponge for moistening the stamp. Fine and unusual.

Start price  
in CHF

Start price  
approx. €

**500** (€ 460)



4256

- 4256** 1909: Birmingham, stamp box by A. & J. Zimmerman, modelled as a chest of drawers of single layer, hinged top conceals sloped twin stamp compartment. Fine.

**300** (€ 275)



4257

**4257** 1909: Birmingham, Novelty single compartment box modelled as a 'wheelbarrow', the hinged lid with a single glass window, showing a specimen stamp, marked 'K&S' and 'RD 520190'. A fine and very rare example of the most sought after novelty desing.

Start price in CHF      Start price approx. €

**600**      (€ 550)



4258

**4258** 1909: Chester, large locket style case of plain design, opening in half to reveal a spring loaded Stamp compartment and trhee Sovereign compartments. Most attractive.

**350**      (€ 320)

**4259** 1909ca.: 'A.Bros' - Patent flat case sliding lid opens to two stamp compartments, with green glass stone at floral front with centre division and cartouche with monogram, fine.

**150**      (€ 140)



4259



George V and Later Silver Boxes



4260



4261

- 4260

1911: Purse style case with flap lid and ring attachment on top, showing embossed 'STAMPS' below the flap.
- 4261

1911: Purse style case with flap lid and ring attachment on top, showing embossed 'STAMPS' beneath the flap.

Start price in CHF	Start price approx. €
100	(€ 90)
100	(€ 90)



4262



4263

- 4262

1910: Birmingham, large envelope-type case with engraved 'C.M.M.' to flap, opens to reveal three internal compartments, two small compartments doe small stamps each side and with full length compartment for large stamps behind.
- 4263

1910ca.: 'A. Barrett & Sons, 63 & 64 Piccadilly', Novelty single compartment case in the form of an envelope with engraved address 'H.B. Debenham, Cheshunt Park, Herts', bearing on front enamelled 1 d.lilac cancelled "LONDON W. DEC 25 93" in black, the flap on reverse with swivel action and ring attachment on the side, fine and rare.

150	(€ 140)
300	(€ 275)





4264



4265

- 4264** 1910ca.: Birmingham 830 Sterling silver stamp box modelled as a book with swivel action, cover and reverse with graphic design. Fine.
- 4265** 1910 ca.: Vesta stamp case in Sterling silver (stamped 'HSB') with ring attachment and insert of three single leather compartments (somewhat dried out), little dents, otherwise fine and scarce.

Start price in CHF	Start price approx. €
120	(€ 110)
150	(€ 140)



4266

- 4266** 1911: Birmingham, stamp box modelled as a bow-fronted chest by 'A & J Zimmerman', the top drawer hinged to the first with a lid at top, each opening to two sloped compartments, fine and rare.

750	(€ 690)
-----	---------



4267

- 4267** 1911: Birmingham, Stamp and Sovereign case combined in pocket watch style design with push-button catch, the front inscribed 'Stamps' with one side opening to a single Stamp case, the other to the Sovereign case or vice-versa, fine and scarce.

Start price  
in CHF

Start price  
approx. €

**300** (€ 275)



4268

- 4268** 1913 ca.: Double sided desk type box with sloped hinged lids, one with glass window and sloped twin compartment the other with concave compartment on the opposite side. Unusual.

**250** (€ 230)



4269



4270

**4269** 1915: Birmingham 'A & LL' (Adie & Lovekin) twin-compartment envelope-type stamp case with attractive and elaborate foliate scrollwork all round and uninscribed cartouche on reverse.

Start price  
in CHF

Start price  
approx. €

**150** (€ 140)

**4270** 1915: 'ALL & Co.' (Adie & Lovekin?) twin-compartment envelope-type stamp case with ring attachment at left and attractive and elaborate foliate scrollwork all round with uninscribed cartouche on reverse.

**150** (€ 140)



4271



4272

**4271** 1916: Birmingham, small one compartment stamp box engraved throughout with rhombic patterns, with ring attachment and thumbpiece opening to reveal a spring loaded dispenser for stamps.

**100** (€ 90)

**4272** 1916: Heart shaped combined vesta/stamp case in silver, top part hinged to side and opens to vesta section, hinged 'door' to front opens the stamp compartment with 'MU' monogram. Unusual.

**400** (€ 370)



4273

**4273**

1916: London novelty cigarette case (12 x 8 cm) of 142 gr. Sterling Silver, marked 'GU/r' with engraved 1d. stamp, London cds (14 SEPT 16' and address of 'Mr. P C Turner Esq. / Abbey Lodge / Little Abington / Cambridgeshire' on top and with gilding inside, opened by push-button closure, some minimal denting, otherwise fine and attractive.

Start price  
in CHF

Start price  
approx. €

**600** (€ 550)



4274

**4274**

A circular stamp-roll dispenser with slit to side, marked 'Sterling' at base and with hinged lid surmounted with an 'upright standing poodle' on top, probably German. Fine.

**300** (€ 275)



4275



4276

- 4275** 1929: CARTIER - Cylindrical shape stamp dispenser with removable lid engraved monogram 'J.P.L.', with a slot on lid and base for pulling out stamps, marked 'STERLING 1926' and 'Cartier' on bottom side. Diameter: 48 mm. A fine and scarce item.
- 4276** 1941: Sterling Silver Stamp Case By W.E.G. of Birmingham - small flat two compartment stamp case with engine-turned cover applied on front with the lettering "STAMPS", and thumbpiece opening to reveal a plain interior. The inner case inscribed "PAT. APPLIED FOR". Wartime silver items are rare.

Start price  
in CHF

Start price  
approx. €

**300** (€ 275)

**200** (€ 185)



4277



4278

- 4277** Two similar 925 Sterling silver flat pocket cases in different designs, both with embossings on front and back, one with lid attached by single loop, the other with ring attachment.
- 4278** Two similar 925 Sterling silver flat pocket cases with purse type clasps and showing two different 'stamp' designs, both embossed, one with 'US-TWO CENTS' on front and 'U.S.MAIL.' on back, the other with Penny Black 1 d. stamp on front. A fine and appealing pair.

**150** (€ 140)

**150** (€ 140)

## Balances and Scales



4279

- 4279** 1904: Birmingham postal balance with calibration panel in ivory, as usual calibrations somewhat worn, mounted to rectangular base containing silver fronted wooden twin compartment drawer, standing on four balled feet, circular top plate with 'GJH' monogram. A fine and appealing item. *Ex Harmers of London 1986, Lot 1241.*

Start price  
in CHF

Start price  
approx. €

**650** (€ 600)



4280

- 4280** 1920's: A fine English brass postal balance on a dark oak base with beam quadrant (diameter 50 mm.) and letter plate (75 x 90 mm.) as well as three inserts for six weights of 4 dr. plus ½ oz. to 8 oz..

**300** (€ 275)



# Ivory Boxes



4281

- 4281** 1900 ca.: Large late 19th. century Sperm Whale Tooth with inserted silver stamp box by Mappin & Webb Ltd. London, hinged lid opens to one concave stamp compartment. Small split of ivory on top of tooth, right to the compartment, due to the ageing process. Length 15 cm., high 5 cm. of 348 gr. weight. Very unusual and scarce item.

Start price  
in CHF

Start price  
approx. €

**750** (€ 690)



4282

- 4282** Hand-painted three compartment box (73 x 34 x 17 mm.) with decorative floral ornaments on all four sides of base and lid, depicting a delightful pastoral scene in 18th. century style on hinged lid. Slight colour abrasion, otherwise fine and most attractive.

**400** (€ 370)

## Brass Boxes



4283



4284

**4283** A small two compartment pocket case modelled as a book with hinged lids on each sides, of which one enamelled in red opening to a sloped twin-compartment stamp box and on the opposite side to another box.

**4284** Antique Chinese Brass box with floral enamelled design on three sides, on base as well as on hinged lid on top, depicting flowers in rose, yellow and white with green leaves on a cobalt background, marked CHINA at bottom. Fine.

Start price  
in CHF

Start price  
approx. €

**150** (€ 140)

**150** (€ 140)

## Porcelain Boxes



4285



4286

**4285** Limoges Porcelain 1900 ca.: Unusual vintage Limoges Stamp Box opening to two different compartments, one for small stamps, the other for larger stamps, completely hand-painted with floral gold decoration and hinged lid with metal rim and base with decorative leaf shaped clasp. A wonderful collectable miniature box.

**4286** Limoges Porcelain: Hand Painted Gilt and floral Pink Rose two compartment box with decorative design and gold enamel finish, hinged lid with metal rim at lid and base and bow shaped clasp. A wonderful collectable miniature box. Fine and rare.

**200** (€ 185)

**200** (€ 185)

# Foreign Boxes

## American Boxes



4287



4288

- 4287** 1891: 'Gorham MFG.Co.' (Pat. June 2490 /STERLING) - Novelty single compartment case in the form of an envelope, flap with swivel action, front with enameled stamp and engraved cancel "New Haven Conn. 1 5 PM 91" and 'backstamped' "P.O. 1.21.91 REC'D" on reverse, fine and scarce.
- 4288** 1890: Novelty single compartment case with swivel action in the form of a 'United States Postcard' with embossed header addressed to 'P.O. Stage / Stamps Inc.' and 'cancelled': "NEW YORK P.O. MAY 20", on reverse with 'handwritten' message: "Dear Uncle..." (minimal text abrasion). Fine and scarce.

Start price  
in CHF

Start price  
approx. €

**200** (€ 185)

**200** (€ 185)



4289

- 4289** 1925ca.: A circular stamp-roll dispenser with slit to side, inscribed 'M.J.S.' on top and marked STERLING and TIFFANY & CO., diameter 46 mm. Fine and rare  
Provenance: Phillips, London, Sale No. 26954, Dec. 1987.

**300** (€ 275)

## Dutch Boxes



4290



4291

- 4290** 1890ca.: Small four compartment box with hinged lids on two sides, one showing embossed 'Sailing Boat' and, on opposite side, a 'Windmill', each opening to a sloped double compartment, fine and unusual.
- 4291** 1890 ca.: Small two compartment pocket case with hinged lids on opposite sides, each embossed with different rural scene and each opening to a single sloped compartment, fine.

Start price  
in CHF

Start price  
approx. €

**200** (€ 185)

**150** (€ 140)

## German Boxes



4292



4293

- 4292** Four compartment stamp box with plain silver frame on a wooden base with hinged lid engraved 'Otto', marked on the side with 'Silver 800' handstamp.
- 4293** 1910ca.: Heavy electro-plated silver-brass box with Art Nouveau floral openwork designed lid showing Sunflower, inside with engraved 'Postamt Solingen Oligs', opening to two concave stamp compartments.

**150** (€ 140)

**100** (€ 90)

# Wooden Boxes



4294



4295

**4294 Tunbridge ware stamp box** with Queen Victoria stamp in black on white on cover with cube decoration on small one compartment box. Fine.

**4295 Swiss Wooden Stamp Box** Attractive 19th. Century three compartment wooden stamp box with a hand painted view of 'Chateau Chillon' and 'Dents du Midi' at Lake Geneva on hinged lid. Slight age-related colour abrasion, otherwise a fine and attractive antique Swiss souvenir.

Start price  
in CHF

Start price  
approx. €

**100** (€ 90)

**150** (€ 140)



4296



4297

**4296 Swiss Wooden Stamp Box** Attractive 19th. Century wooden stamp box with a hand painted view of Lake Lucerne (Urnersee) presumably from Brunnen (Schwyz) in direction to Canton Uri on hinged lid, opening to three sloped compartments. Minimal age-related colour abrasion, otherwise a fine and attractive antique Swiss souvenir.

**4297 Wooden Stamp Boxes** Two carved two compartment stamp boxes with hinged lids, one from 'Lucerne', the other from 'Geneva', further a handpainted two compartment stamp box (defective hinge) with a view of 'Chateau Chillon'. Attractive early 20th century Swiss Souvenirs.

**150** (€ 140)

**75** (€ 70)