

301 Corinthila Stamp Auction
Friday 2 June 2023, 15:30 h

BRITISH WEST AFRICA

The 'BESANÇON' Collection (part II)



CORINPHILA AUKTIONEN AG

Wiesenstrasse 8 · 8032 Zurich
Schweiz / Switzerland / *Suisse*

Tel +41-(0)44-389 91 91 · Fax +41-(0)44-389 91 95
e-mail: info@corinphila.ch · web: www.corinphila.ch

INHALTSVERZEICHNIS

TABLE OF CONTENTS

Catalogue 287 British West Africa

Los Nr. / Lot No.	Friday 2 June 2023, 15:30 h	Seite / Page
5001 – 5096	Gambia	14 – 34
5097 – 5145	Gold Coast	35 – 48
5146 – 5214	Nigeria – Lagos	49 – 65
5215 – 5287	Nigeria – Oil Rivers Protectorate	66 – 84
5288 – 5318	Nigeria – Niger Coast Protectorate	85 – 92
5319 – 5324	Niger Company Territories	93 – 94
5325 – 5334	Northern Nigeria	95 – 97
5335 – 5389	Southern Nigeria	98 – 114
5390 – 5397	Nigeria	115 – 116
<i>Zahlungs- & MWST Information, Versandinformationen & Kosten</i> <i>Payment, VAT Information, Shipping Information & Costs</i>		117 – 119
<i>Versteigerungsbedingungen</i> <i>Conditions of Sale</i>		120 – 125
<i>Lageplan, Anfahrtsweg, Unterkünfte/Hotels</i> <i>Practical Information, Directions, Hotels</i>		126 – 127

BRITISH WEST AFRICA

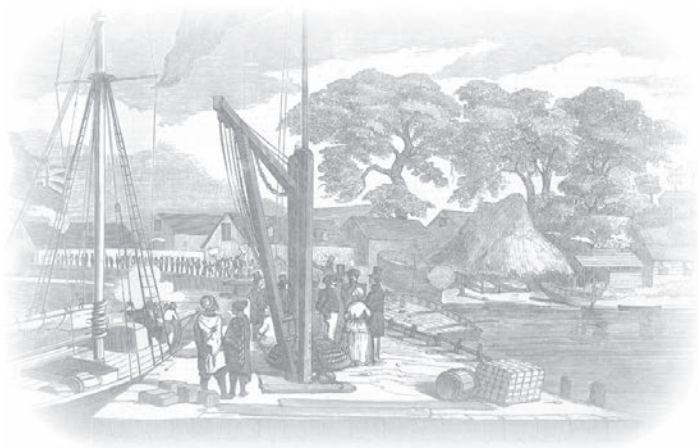
The 'BESANÇON' Collection (part II)



View of the West African Coast

Gambia

1869 (March), "Cameos" No Watermark Imperf.



View of Matabele Pier in The Gambia



5001



5002



5003



ex 5004

		Gibbons		Start price in CHF	Start price approx. €
5001	4 d. brown, no wmk., imperforate, an unused example, ample margins, overprinted SPECIMEN in black (Samuel type D5), fresh and very fine, minor wrinkles of no importance on large part og. Extremely rare. <i>Note: For a further example the illustration on Plate 6 of the Samuel handbook.</i>	1 spec	*	500	(€ 505)
5002	4 d. brown, no wmk., imperforate, an unused example with good to large margins all round, of rich deep colour, fresh and very fine, large part og. Signed A.Diena Gi = £ 600.	1	*	250	(€ 255)
5003	4 d. pale brown, no wmk., imperforate, an unused example with good to large margins all round, fresh and very fine, large part og. Signed J.Schol Gi = £ 500.	2	*	200	(€ 200)
5004	4 d. brown, no wmk., imperforate, two used examples with large margins all round, one of rich deep colour and superb but for minor corner bend, the other in a paler shade, both cancelled in red. Scarce Gi = £ 425. <i>Provenance: Collection John Rose, Grosvenor, London, 23 May 2011, ex lots 28 and 37.</i>	1+ 2		180	(€ 180)



Gibbons

Start price
in CHF Start price
approx. €

- 5005** 6 d. deep blue, no wmk., imperforate, an unused example, good even margins, overprinted SPECIMEN in black (Samuel type D5), minor wrinkle of no importance on large part og. Extremely rare.

Note: For a further example the illustration on Plate 6 of the Samuel handbook.

Provenance: Collection John Rose, Grosvenor, London, 23 May 2011, lot 40.

3 spec * **500** (€ 505)

- 5006** 6 d. blue, no wmk., imperforate, an unused example in a pale shade with good to large margins all round, part og. Signed Holcombe. Cert. BPA (2022) Gi = £ 600.

3a * **200** (€ 200)

- 5007** 6 d. blue to deep blue, no wmk., imperforate, an unused block of four in an intermediate shade, marginal from top of sheet, merest traces of dust and aging at top mentioned for accuracy, large part og. A rare multiple Gi = £ 2'200+.

Provenance: Collection John Rose, Grosvenor, London, 23 May 2011, lot 41 (as Gi. 3).

3a 田* **1'000** (€ 1'010)

1874 (August), "Cameos" Watermark Crown CC Imperf.



- 5008** 4 d. brown and 6 d. deep blue, wmk. Crown CC, each with excellent colour and large margins all round, on small piece overprinted "CANCELLED" in black (Samuel type D6); these being from the document submitted to the Chinese Imperial Maritime Customs in 18 June 1877 as specimens of embossed stamps produced by the firm. Mentioned in the Samuel handbook on page 114. Superb and of great rarity.

5+ 7 spec (*) **1'000** (€ 1'010)

- 5009** 4 d. brown, wmk. Crown CC, imperforate, an unused example in a rich deep shade with good margins all round, variety "Watermark Inverted", the embossing with slight crack at top of Queen's head, large part og. Scarce. Signed A.Diena Gi = £ 850.

5w * **200** (€ 200)

- 5010** 4 d. pale brown, wmk. Crown CC, imperforate, an unused block of four, marginal from top of sheet, large margins all round, of fine colour, large part og. with lower pair unmounted og. but with pencil annotation. A rare and most attractive multiple Gi = £ 1'700+.

6 田*/** **1'000** (€ 1'010)



5011

Gibbons

Start price
in CHF Start price
approx. €

- 5011** 4 d. pale brown, wmk. Crown CC upright, the imperforate complete sheet of fifteen subjects (5 x 3), of fine rich fresh colour, insignificant wrinkles mostly in margin, slightly dried patchy large part og. A wonderful sheet, with just two complete sheets recorded (the other sheet was ex Dale-Liechtenstein and Leonard Weldhen): this particular sheet has not been on the philatelic market for over 40 years.

*Provenance: Illustrated on the front cover of "The Gambia" by R.E.R. Dalwick (1953)
Collection R.A.G. Lee.*

6 田*/** **7'500** (€7'575)



R.A.G. Lee



5012

- 5012** 6 d. deep blue, wmk. Crown CC, imperforate, an unused block of four from the lower right corner of the sheet of fifteen subjects, of fine colour, trivial age spots just apparent on position 15 and one or two on large part og-. upper pair, positions 9-10 showing watermark double lined letters "WN C" of Crown Colony, slightest of bends but a remarkable and rare multiple and most attractive. Cert. Holcombe (1992).

*Provenance: Collection Dale Liechtenstein, Harmers, New York, 23 Oct 1990
Grosvenor, London, 2-3 Nov 2006, lot 856.*

7 田* **3'000** (€3'030)



5013

5014

5015

			Gibbons		Start price in CHF	Start price approx. €
5013	6 d. deep blue, wmk. Crown CC, imperforate, an unused example with large margins all round, variety "Watermark Reversed", fresh and very fine, large part og. A rare stamp Gi = £ 950.	7x	*		300	(€ 305)
5014	6 d. blue, wmk. Crown CC, imperforate, the unused horizontal pair, marginal at base, with large margins all round, variety "Watermark Inverted and Reversed", slight grease spot on margin otherwise of fine appearance, somewhat heavily mounted, part og. Rare Gi = £ 1'700+.	7y	*		500	(€ 505)
5015	6 d. blue, wmk. Crown CC, imperforate, the unused horizontal pair, marginal at right, with large margins all round, fresh and fine, large part og. A scarce and attractive pair Gi = £ 700+.	8	*		250	(€ 255)



5016

5016	6 d. blue, wmk. Crown CC, imperforate, the unused complete sheet of fifteen subjects, large margins all round and of excellent vibrant colour, showing 'Sloping Label' variety on positions 1 and 5, superb unmounted og. A magnificent sheet (only 334 were invoiced) in the finest possible quality. <i>Provenance: Collection Dale Liechtenstein, Harmers, New York, 23 Oct 1990, lot 51 Collection Leonard Weldhen, Bonhams, 11 Oct 2002, lot 1268.</i>	8	田**		8'500	(€ 8'585)
------	--	---	-----	--	-------	-----------



Louise Boyd Dale



Alfred F. Lichtenstein



5017

5017 6 d. blue, wmk. Crown CC, imperforate, a used horizontal strip of three, good to large if irregular margins all round, of fine colour, cancelled by "Gambia / Paid" datestamps (March 12) in red. A very rare stamp in a used multiple *Gi* = £ 750+.

Gibbons	Start price in CHF	Start price approx. €
8	500	(€ 505)

1880/81, Watermark Crown CC Perf. 14



5018



5019

5018 3 d. bright ultramarine, wmk. Crown CC sideways, perf. 14, a used example, well centred and of fine colour, cancelled by "Gambia / Paid" cds in red (Oct 7). Superb *Gi* = £ 500.

5019 4 d. brown, wmk. Crown CC sideways, perf. 14, an unused example, variety "Watermark Crown to the Left of CC", fine but for horizontal bend, large part og. A very elusive and scarce stamp *Gi* = £ 600.

Provenance: Collection William Frazer, Spink, 25 March 2004, ex lot 252.

14A	200	(€ 200)
15Aw	*	180 (€ 180)



5020

5020 4 d. brown, wmk. CC sideways, used on 1880 cover to Flurlingen, Switzerland tied by "GAMBIA / PAID" code A datestamp in red (Oct 14) with repeated strike at left. Manuscript '3' (pence) credit, "PAID / LIVERPOOL / BR. PACKET" cds (Oct 30) in red and reverse with London cds and Schaffhausen arrival cds (Nov 1). Some minor creasing to envelope but a fine and early cover to a most unusual destination.

15A	✉	750 (€ 760)
-----	---	--------------------



View of Flurlingen



5021



5022

- 5021** 1 s. green, wmk. Crown CC sideways, perf. 14, a used example, well centred and of rich colour, cancelled by "Gambia / Paid" cds in red (June 9, 1882). Superb *Gi* = £ 325.
- 5022** 1 s. deep green, wmk. Crown CC sideways, perf. 14, an unused example, well centred, of fine colour, paper hinge at top, large part og. A fine and scarce stamp *Gi* = £ 650.
Provenance: Collection William Frazer, Spink, 25 March 2004, ex lot 252.

Gibbons

Start price
in CHFStart price
approx. €

19A

120 (€ 120)

20A

*

200 (€ 200)

5023



5024

- 5023** ½ d. deep orange, wmk. Crown CC upright, perf. 14, an unused complete sheet of fifteen subjects, slight soiling in margins, corner crease in lower left margin and age spot on position 14, otherwise fine, stamps unmounted og. Scarce *Gi* = £ 300+.
Provenance: Harmers, London, 9 Jan 1979, lot 102.
- 5024** 1 d. maroon, wmk. Crown CC upright, perf. 14, an unused complete sheet of fifteen subjects, margin missing at right, soiling in margin, variety "Watermark Reversed", the stamps very fine, unmounted og. Rare *Gi* = £ 3'375+.
Provenance: Grosvenor, London, 15-16 May 2003, lot 543.

10B 田*/**

100 (€ 100)

12Bw

田**

850 (€ 860)

5025

- 5025** 3 d. pale dull ultramarine, wmk. Crown CC upright, perf. 14, a used block of six (3 x 2), tiny perf. split with hinge protection between first and second stamp, lightly cancelled by in black by "Gambia" code B datestamps. A scarce multiple *Gi* = £ 190+.

14Bc

田

100 (€ 100)



5026



5027

- 5026** 3 d. pale ultramarine, third printing, wmk. Crown CC upright, perf. 14, an unused complete sheet of fifteen subjects, variety "Watermark Inverted", of fresh colour, very fine, stamps unmounted og. An extremely rare sheet $G_i = £ 1'275+$.
Provenance: Bonhams, London, 10 Sept 2003, lot 1004.

- 5027** 4 d. brown, wmk. CC, a single example used on cover with complete original contents written from "HMS Sylvia" at Bathurst to Strathfield Saye Rectory, Hampshire tied by "GAMBIA" code B datestamp (Jan 30) in red with repeated strike below, manuscript '3' (pence) credit to the Colony in red. "PAID / LIVERPOOL / BR. PACKET" in red at left (Feb 15). Winchfield arrival cds on reverse of a fine cover from this famous correspondence.
Provenance: Harmers, London, 9 Nov 1988, lot 517.

Gibbons

Start price
in CHF Start price
approx. €

14Bcw 田** 500 (€ 505)

16 田 400 (€ 405)



5028



5029



5030

- 5028** 6 d. blue, wmk. Crown CC upright, perf. 14, a used example, position 5, showing variety "Sloping Label", cancelled by barred obliator in black leaving the variety clear $G_i = £ 150$.
- 5029** 6 d. blue, wmk. Crown CC upright, perf. 14, an unused block of four from lower right corner of the sheet, positions 9-10 / 14-15, of fine colour, closed tear in outer margin, minor thinning on part og. Scarce $G_i = £ 520+$.
Provenance: Collection R.F. Bavington-Jones, SG, London, 13 April 1983, lot 190.
- 5030** 6 d. blue, wmk. Crown CC upright, a used block of six (2 x 3), of fine colour, cancelled by "Gambia/ Paid" datestamps (Sept 12, 1884) in red. Horizontal ironed bend on top pair but a charming and scarce multiple $G_i = £ 280+$.

17Bc 80 (€ 80)

18B 田* 180 (€ 180)

18B 田 150 (€ 150)



5031

Gibbons

Start price
in CHF Start price
approx. €

- 5031** 1 s. green, wmk. Crown CC upright, perf. 14, an unused block of four, corner marginal from lower right of sheet, positions 9-10 / 14-15, tiny age spot on first stamp and on second on reverse, slightly browned gum, large part og. Despite imperfections, a scarce multiple Gi = £ 1'100+.

19B

田*

200 (€ 200)*British administrator in Gambia*

5032

- 5032** 1 s. green, first printing, wmk. Crown CC sideways, perf. 14, a used example tied to 1882 cover front to Marseille, tied by "GAMBIA / PAID" cds in red (Feb 23) - note error '3' for code B at top; with "PAID / LIVERPOOL / BR. PACKET" cds in red at left (March 9). Manuscript '3' (pence) credit to the Colony for a 1½ ounce letter, with Calais entry marking in black. Rare and most attractive. Cert. BPA (1964).
Provenance: Spink, London, 12 Nov 2009, lot 132.

19B

(⊠)

1'200 (€ 1'210)

1886/93, Watermark Crown CA, Perf 14



ex 5033



ex 5034

		Gibbons	Start price in CHF	Start price approx. €
5033	½ d. myrtle-green, 1 d. crimson, 2 d. orange and 6 d. yellowish olive-green; wmk. Crown CC, perf. 14, the unused set of four overprinted SPECIMEN in black (Samuel type D12), the ½ d. with nibbed perfs. at left, 2 d. light age spots on gum, large part og. A scarce set Gi = £ 400.	21s+ 23s+ 24s+ 32s	*	120 (€ 120)
5034	½ d. myrtle-green, 1 d. crimson, 2 d. orange, 3 d. slate-grey, 6 d. bronze-green and 1 s. deep violet; wmk. Crown CA sideways, perf. 14, unused examples all locally overprinted SPECIMEN in black (Samuel type GA1), fine appearance, large part og. Scarce. <i>Provenance: Harmers, London, 8 July 2003, lot 509.</i>	21+ 23+ 25+ 28+ 33b+ 36 spec	*	300 (€ 305)
5035	½ d. to 1 s., wmk. Crown CA sideways, the unused set showing all listed shades besides the 1 s. aniline violet, generally fine large part og (28 stamps) Gi = £ 200+. (Photo = www)	21/36	*	100 (€ 100)
5036	2 d. orange and 2 d. deep orange, wmk. Crown CA sideways, perf. 14, unused complete sheets of fifteen subjects, both with first comb perf., 2 d. orange with somewhat browned gum, 2 d. deep orange with tiny stain in margin at right, fine unmounted og. Gi = £ 290+. <i>Provenance: Harmers, London, 9 Jan 1979, lot 115.</i> (Photo = www)	24+ 25	田*/**	100 (€ 100)
5037	2½ d. ultramarine and 2½ d. deep bright blue, wmk. Crown CA sideways, perf. 14, unused complete sheets of fifteen subjects (3), 2½ d. deep bright blue with first comb perf., with minor age spots on reverse lower margin, 2½ d. ultramarine second comb. perf. (2 sheets), very fine, all with large part, mostly unmounted og. Gi = £ 575+. (Photo = www)	26+ 27	田*/**	250 (€ 255)
5038	3 d. slate-grey and 3 d. grey, wmk. Crown CA sideways, perf. 14, unused complete sheets of fifteen subjects (2), 3 d. grey with first comb perf., sheet and a replating of same using two blocks of four, a strip of three and two pairs; 3 d. pearl-grey second comb. perf. sheet, very fine, all with large part, mostly unmounted og. Gi = £ 625+. (Photo = www)	28+ 29	田*/**	250 (€ 255)



ex 5039

5039	4 d. brown and 4 d. deep brown, wmk. Crown CA sideways, perf. 14, unused complete sheets of fifteen subjects (2), both with first comb perf., with plating varieties noted, very fine, both with large part, mostly unmounted og. Gi = £ 400+. <i>Provenance: Harmers, London, 9 Jan 1979, lot 120.</i>	30+ 31	田*/**	175 (€ 175)
-------------	--	--------	-------	--------------------



Government House in Bathurst



5040

Gibbons

Start price
in CHF Start price
approx. €

5040 4 d. deep brown, wmk. Crown CA sideways, perf. 14, an unused complete sheet of fifteen subjects, variety "Watermark Upright", sheet with first comb perf., and stained in sheet margin at left and outer margin at right, creased through perforations but the stamps superb with twelve unmounted og. A major rarity - Stanley Gibbons only list this stamp in used condition - catalogued at £ 4'250 each; this sheet of the utmost rarity and entirely unique

Gi = £ 63'750 (for used).

Provenance: Harmers, London, 9 Jan 1979, lot 121.

31a ** **15'000** (€ 15'150)



5041

5041 6 d. olive-green, wmk. Crown CA sideways, an unused Plate Proof / Imperforate example with good to large margins all round, of fine colour and superb large part og. Just 15 examples printed. Extremely rare Gi = £ 2'250.

32d Proof

* **1'000** (€ 1'010)



5042

Gibbons

Start price
in CHF Start price
approx. €

- 5042** 6 d. bronze-green, wmk. Crown CA sideways, an unused complete sheet of 15 subjects, 1st. comb perf., position 5 showing "Sloping Label" variety, slightly browned large part or unmounted og. Rare *Gi* = £ 725+.
Provenance: Harmers, London, 9 Jan 1979, lot 125.

33+ 33a 田*/** **220** (€ 220)



5043

- 5043** 1 s. aniline violet, wmk. Crown CA sideways, an unused example of this elusive shade, fresh and very fine, large part og. Seldom seen. Cert. BPA (1954) *Gi* = £ 1'100.

36b * **400** (€ 405)



5044

- 5044** 1/2 d. grey-green, 1 d. pale carmine, 2 d. orange, 2 1/2 d. ultramarine, 3 d. grey and 4 d. brown (2) all used on 1893 registered cover to Dresden, Germany tied by barred obliterator handstamps in black with "Registered / Liverpool" transits (Aug 18), London transit in red and reverse with Dresden arrival cds. File fold away from the adhesives, an attractive cover.

22+ 23b+
24+ 26+
29+ 30



200 (€ 200)

1898/1902, Watermark Crown CA, Perf. 14



Premises of De La Rue

5045

Gibbons

Start price
in CHF

Start price
approx. €

5045

1897: De La Rue Appendix sheet (161 x 326 mm.) for "Colour Scheme similar to that dated Jan 9, 1894" and dated at top "Aug 24th 1897", showing 6 d. "Imperium" imperforate Keyplate Proofs, single colours for ½ d., 1 d. and 6 d.; others bicoloured as selected and annotated alongside each Proof - the proposed 3 d. in brown & dull green rejected with red manuscript pen cross and marginal reddish purple & blue attached alongside; proposed 4 d., 6 d. and 1 s. values folded underneath. Illustrated in the "De La Rue Collection" edited by Frank Walton RDP on page 3235 but without the 'additional Specimens' originally affixed at right of the sheet. Extremely rare.

Provenance: Collection Whitfield, RL, London, 24 Nov 1976, lot 47
Harmers, London, 9 Nov 1988, lot 542
Collection John Rose, Grosvenor, 23 May 2011, lot 237.

37/44 Proofs

(*)

5'000 (€5'050)



5046



5047



"Malformed "S" in POSTAGE"

Gibbons		Start price in CHF	Start price approx. €
37b	*	200	(€ 200)
40a	*	180	(€ 180)

5046 ½ d. dull green, wmk. Crown CA, an unused horizontal pair (left pane row 7, stamp 3), variety "Repaired "S" in POSTAGE" on left hand stamp, large part og. A superb example of a very scarce stamp Gi = £ 550+.

5047 2½ d. ultramarine, wmk. Crown CA, an unused example, variety "Malformed "S" in POSTAGE", large part og. A very scarce stamp Gi = £ 475.



ex 5048

5048 3 d. reddish-purple & blue and 3 d. deep purple & ultramarine, each in unused corner marginal blocks of six (3 x 2), the former from Plate 2, the deep shade from Plate 3; fresh multiples and most attractive, large part og or (Plate 2) unmounted og. Scarce Gi = £ 875+. *Provenance: Collection John Rose, Grosvenor, London, 23 May 2011, lot 263.*

41+ 41b	田*/**	350	(€ 355)
---------	-------	-----	---------



5049



5050



5051

5049 4 d. brown & blue, wmk. Crown CA, an unused example, variety "Malformed "S" in POSTAGE", large part og. A superb example of a very scarce stamp Gi = £ 550.

42a	*	200	(€ 200)
-----	---	-----	---------

5050 6 d. olive-green & carmine, wmk. Crown CA, an unused example, fresh appearance, variety "Malformed "S" in POSTAGE", tiny indentation in surface at left, part og. Scarce stamp Gi = £ 600. *Provenance: Collection John Rose, Grosvenor, London, 23 May 2011, lot 267.*

43a	*	180	(€ 180)
-----	---	-----	---------

5051 1 s. violet & green, wmk. Crown CA, an unused example, fresh colour, variety "Malformed "S" in POSTAGE", large part og. A superb example of a very scarce stamp Gi = £ 800. *Provenance: Grosvenor, London, 17 March 2011, lot 408.*

44a	*	350	(€ 355)
-----	---	-----	---------

1902/05 and Later Issues



"Dented Frame"



5052



5053



5054



ex 5055



5056



5057

Gibbons

Start price
in CHF Start price
approx. €

- 5052** 1902/05: 4 d. brown & ultramarine, wmk. Crown CA, an unused example showing variety "Dented Frame" (Row 1, stamp 6), fine, unmounted og. A very scarce stamp, just 98 examples issued *Gi* = £ 325.
Provenance: Collection John Rose, Grosvenor, London, 23 May 2011, lot 282.
- 5053** 1902/05: 2 s. deep slate & orange, wmk. Crown CA, an unused example showing variety "Dented Frame" (Row 1, stamp 6), fresh and fine, large part og. A very scarce stamp, just 50 examples issued *Gi* = £ 800.
- 5054** 1902/05: De La Rue stamp-size Die Proof for the 3 s. value, imperforate in black on glazed white card, the working Die Proof and believed to be the sole completed Die Proof known for the 3 s. Keyplate.
Note: Stated in the John Rose catalogue to be the sole recorded completed Die Proof of the Edward VII Keyplate issues, however the Robson Lowe lot contained further values (5 d., 7½ d., 10 d., 1 s. 6 d., 2 s., 2 s. 6 d.) on brown card pieces, dated and defaced with red diagonal ink lines: the date of the 3 s. value being "March 23 1905".
Provenance: RL, London, 24 Nov 1976, ex lot 67
Collection Leonard F. Weldhen, Bonhams, 11 Oct 2002, lot 1396
Collection John Rose, 23 May 2011, lot 270.
- 5055** 1904/06: Keyplate set of twelve values, wmk. Multiple Crown CA, the unused set plus additional 2½ d. bright blue & ultramarine, fine large part og., together with the 5 d., 7½ d. and 10 d. values overprinted SPECIMEN in black, large part og. *Gi* = £ 375.
- 5056** 1904/06: 2 d. orange & mauve, wmk. Multiple Crown CA, an unused example, variety "Dented Frame" (Row 1, stamp 6), fresh and fine, large part og. Scarce, just 238 examples issued *Gi* = £ 375.
Provenance: Sotheby's, London, 24 Nov 2005, lot 159.
- 5057** 1904/06: 6 d. olive-green & carmine, wmk. Multiple Crown CA, an unused example, variety "Dented Frame" (Row 1, stamp 6), fresh and fine, large part og. Very scarce, just 68 examples issued *Gi* = £ 550.
Provenance: Grosvenor, London, 9 Dec 2009, lot 905.

50a

**

120

(€ 120)

54a

*

300

(€ 305)

56 Proof

(*)

500

(€ 505)

57/68+ 60a+

63s+ 65s+

66s

*

140

(€ 140)

59a

*

120

(€ 120)

64a

*

200

(€ 200)



ex 5058

- 5058** 1904/06: 1 s. violet & green and 2 s. deep slate & orange, wmk. Multiple Crown CA, each in unused blocks of four, fresh colour, large part og. with the 2 s. unmounted og. Scarce multiples *Gi* = £ 570+.
Provenance: SG, London, 22 Jan 1981, lots 471 and 472.

67+ 68

田*/**

200

(€ 200)



5059

Gibbons

Start price in CHF Start price approx. €

5059 1906 (April 10): Provisional ½ d. on 2 s. 6 d. purple & brown on yellow, a used block of twelve (6 x 2) with interpanneau margin at left, from the third and fourth row showing the 4 mm. setting. cancelled by six strikes of the "Bathurst / Gambia" cds (April 20, 1906) in black. A scarce and most attractive multiple *Gi* = £ 750+.

69 田 **300** (€ 305)



5060

5060 1906 (April 10): Provisional ½ d. on 2 s. 6 d. purple & brown on yellow, marginal, and 1 d. on 3 s. carmine & green on yellow in a horizontal pair used with 1905 1 s. 6 d. green & carmine on yellow on registered 1906 cover to Brighton, all tied by "Registered / Gambia" datestamps (April 12). Reverse with Liverpool transit (April 28) and Brighton arrival. A rare and charming cover. *Note: The cover is from the same correspondence to Brighton as the one illustrated in "The Stamps & Postal History of the Gambia" on page 45.*

69+ 70+ 53 田 **500** (€ 505)



5061



ex 5062



5063



5064



"Split 'A' in POSTAGE"

5061 1906 (April 10): Provisional 1 d. on 3 s. carmine & green on yellow, an unused example, variety "Surcharge Double", fresh and very fine, large part og. A very rare stamp. Cert. BPA (2022) *Gi* = £ 1'800. *Provenance: Harmers, London, 6-7 June 1978, lot 87.*

70a * **750** (€ 760)

5062 **Colour Changes** 1909 (Oct 1): Keyplate definitives, wmk. Multiple Crown CA, the unused set of thirteen values from 1 d. to 3 s. overprinted SPECIMEN in black, fresh and fine, large part og. A scarce and attractive set *Gi* = £ 300.

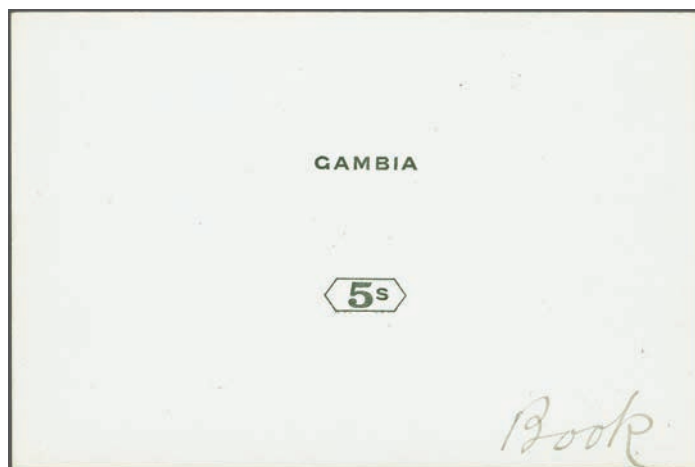
73s/85s * **120** (€ 120)

5063 **Colour Changes** 1909 (Oct 1): 10 d. pale sage-green & carmine, wmk. Multiple Crown CA, an unused example, variety "Dented Frame" (Row 1, stamp 6), fresh and very fine, large part og. Scarce, a maximum of 137 stamps issued *Gi* = £ 325.

80a * **150** (€ 150)

5064 1912/22: 2 s. purple & blue on blue, wmk. Multiple Crown CA, an unused example showing variety "Split 'A' in POSTAGE", (Row 8, stamp 3 on left pane), of fresh colour, fine large part og. A very scarce stamp *Gi* = £ 650.

99a * **200** (€ 200)



5065

Gibbons

Start price	Start price
in CHF	approx. €

- 5065** 1912/22: De La Rue Die Proof for the country legend and Duty Plate only, printed in black on glazed white card, endorsed "Book" in manuscript at lower right. Scarce and very fine. *Provenance: Collection Leonard F. Weldhen, Bonhams, London, 11 Oct 2002, lot 1432.*

102 Proof	(*)	250	(€ 255)
-----------	-----	------------	---------



ex 5066



5067

- 5066** 1921/22: George V, wmk. Multiple Script CA, the unused set of ten values and the unused set of ten overprinted SPECIMEN in black or red (on 4 s. value), generally fresh and fine, large part og. Gi = £ 325.

108/117+			
108s/117s	*	100	(€ 100)

- 5067** 1921/22: 10 d. pale sage-green & carmine, wmk. Multiple Script CA, an unused block of eight, variety "Watermark Reversed", fine colour, trivial corner bend, unmounted og. A scarce multiple Gi = £ 960+.

Provenance: Collection John Rose, Grosvenor, London, 23 May 2011, lot 381.

116x	田**	350	(€ 355)
------	-----	------------	---------

- 5068** 1922/29: Elephant & Palm, the unused set of four values, wmk. Multiple Crown CA, together with the unused set of four overprinted or handstamped (5 s.) SPECIMEN in black or red (1 s.). Minor gum wrinkles, fresh appearance, large part og. Gi = £ 300+.

118/121+			
118s/121s	*	100	(€ 100)



5069

- 5069** 1922: De La Rue Elephant & Palm Master Die Proof for the low values, head-plate and Crown only, engraved in black on white wove paper (24 x 26 mm.). Fine and rare. *Provenance: Collection John Rose, Grosvenor, London, 23 May 2011, lot 386.*

118 Proof	(*)	350	(€ 355)
-----------	-----	------------	---------



5070




ex 5071



ex 5072

- 5070** 1922: De La Rue Elephant & Palm Master Die Proof for the low values, with blank Duty Plates, printed in black & deep blue on thin surface glazed wove paper (48 x 55 mm.) showing Printer's guide lines and manuscript '0.1' reversed at base. Minor bend not affecting the appearance of an attractive and rare Proof.
Provenance: Collection Col. J.R. Danson, RL, London, 4 May 1971, lot 62.
- 5071** 1922/29: Elephant & Palm, the used set of four values, wmk. Multiple Crown CA, all in blocks of four, the rare 5 s. green on yellow cancelled by "Bathurst / Gambia" datestamps (January 27, 1926). Scarce multiples Gi = £ 1'100+.
Provenance: Harmers, London, 17 Noiv 1982, lot 867.
- 5072** 1922/29: Elephant & Palm, the unused set of twenty-one values, wmk. Multiple Crown CA, including both ½ d. shades and the rare 1928 3 s. slate-purple; generally fresh and very fine, large part og. A very scarce and attractive set Gi = £ 600+.
- 5073** 1922/29: Elephant & Palm, wmk. Multiple Script CA, the collection on leaves with used blocks of four (20) from ½ d. deep green to 10 s. sage-green, excluding the 5 d., 1 s. and 3 s. slate-purple values, but with additional blocks of 1 s. 6 d., 2 s. and 4 s. values, generally fresh and fine, a rare group Gi = £ 2'500+.
Provenance: Harmers, London, 17 Nov 1982, lot 867.

(Photo =  www)

Gibbons		Start price in CHF	Start price approx. €
118 Proof	(*)	650	(€ 655)
118/121	田	250	(€ 255)
122/142	*	220	(€ 220)
123-142	田	750	(€ 760)



5074



5075

- 5074** 1922/29: Elephant & Palm, 1½ d. bright rose-scarlet, wmk. Multiple Script CA, a used example, variety "Watermark Inverted", neatly cancelled by "Bathurst / Gambia" cds (April 14, 1925) in black; unrecorded in unused condition, a rare stamp Gi = £ 750.
Provenance: Collection John Rose, Grosvenor, London, 23 May 2011, lot 392.
- 5075** 1922/29: Elephant & Palm 3 d. bright blue, wmk. Multiple Script CA, an unused example, variety "C" of "CA" missing in watermark, well centred and of fresh colour, large part og. A very rare and most elusive stamp. Cert. BPA (2008) Gi = £ 1'100.
Provenance: Grosvenor, London, 17 March 2011, lot 464.

125w		350	(€ 355)
128a	*	500	(€ 505)



5076



5077

Gibbons

Start price
in CHF Start price
approx. €

- 5076** 1922/29: Elephant & Palm, 3 s. bright aniline violet, wmk. Multiple Script CA, a used block of four, corner marginal from lower right corner of the sheet, neatly cancelled by "Bathurst/ Gambia" cds (March 21, 1929) in black. Hinged on reverse for protection, choice and very scarce Gi = £ 380+.

Provenance: Collection John Rose, Grosvenor, London, 23 May 2011, lot 396.

138 田 **180** (€ 180)

- 5077** 1922/29: Elephant & Palm 3 s. slate-purple (c), wmk. Multiple Script CA, comb perf. 13.8 x 13.7, a fine used example cancelled by "Bathurst / Gambia" cds in black. Rare. Cert. RPSP (1990) Gi = £ 475.

Provenance: Dr. Robert Towers.

139 **250** (€ 255)



"Extra Flagstaff"



"Short Extra Flagstaff"



ex 5078



5079

- 5078** 1936 (May 6): Silver Jubilee set of four values unused, all in corner blocks of four from lower left of sheet, Plate 1, Row 9, stamp 1 (first stamp in block) showing "Extra Flagstaff" variety, fresh and fine appearance but 1½ d. and 1 s. with one or two light age spots on gum, large part og. or unmounted og. Scarce Gi = £ 1'000+.

Provenance: Bridger & Kay, London, 22-23 Sept 1980, ex lot 1041.

143a/146a 田*/** **200** (€ 200)

- 5079** 1936 (May 6): Silver Jubilee 1½ d. deep blue & scarlet, an unused corner block of four from top left of sheet, Plate 2, Row 2, stamp 1 showing "Short Extra Flagstaff" variety, fresh and fine but for gum bend on right hand pair not affecting the variety, unmounted og. Gi = £ 350+.

143b 田** **100** (€ 100)



5080

Gibbons

Start price
in CHF Start price
approx. €

- 5080** 1936 (May 6): Silver Jubilee 1½ d. deep blue & scarlet, a used corner block of four from top right of sheet, with requisition number 212 in margin, Plate 3, Row 2, stamp 5 (third stamp in block) showing "Lightning Conductor" variety clearly, cancelled by "Registered / PO Gambia" oval datestamp leaving the variety clear. Scarce Gi = £ 500+.

143c

△田

180

(€ 180)



5081

- 5081** 1936 (May 6): Silver Jubilee 1½ d. deep blue & scarlet, an unused example, Plate 5, Row 7, stamp 1 showing "Flagstaff on right-hand turret" variety clearly, large part og. A scarce stamp Gi = £ 600.

143d

*

180

(€ 180)



5082



5083

- 5082** 1936 (May 6): Silver Jubilee 1½ d. deep blue & scarlet, an unused block of four, marginal from left of sheet, Plate 6, Row 5, stamp 2 (fourth stamp in block) showing "Double Flagstaff" variety clearly, large part og. with the lower pair unmounted og. Scarce Gi = £ 600+. Provenance: Grosvenor; London, 9 Dec 2009, lot 888.

143e

田*/**

200

(€ 200)

- 5083** 1936 (May 6): Silver Jubilee 3 d. brown & deep blue, an unused corner block of four from top left of sheet, Plate 2, Row 2, stamp 1 showing "Short Extra Flagstaff" variety, fresh and fine, large part og. with three stamps, but not the variety, unmounted og. Gi = £ 275+.

144b

田*/**

100

(€ 100)



5084

Gibbons

Start price
in CHF Start price
approx. €

- 5084** 1936 (May 6): Silver Jubilee 3 d. brown & deep blue, a used corner block of four from top right of sheet, with requisition number 105 in margin, Plate 3, Row 2, stamp 5 (third stamp in block) showing "Lightning Conductor" variety clearly, cancelled by "Registered / PO Gambia" oval datestamp on civer to Liverpool, with Plymouth transit cds on reverse. Scarce
Gi = £ 375+.

144c 田 **120** (€ 120)



5085



5086

- 5085** 1936 (May 6): Silver Jubilee 6 d. light blue & olive-green in an unused corner block of four from lower left of sheet, Plate 1, Row 9, stamp 1 (first stamp in block) showing "Extra Flagstaff" variety with the variety officially erased - and fourth stamp with extraneous flaw below "MB" of GAMBIA, fresh and fine appearance, large part og. but toned on reverse and two perf. tips on obverse affected, nevertheless very scarce.
Provenance: Bridger & Kay, London, 22-23 Sept 1980, ex lot 1041.
- 5086** 1936 (May 6): Silver Jubilee 6 d. light blue & olive-green, an unused corner block of four from top left of sheet, Plate 2, Row 2, stamp 1 (third stamp in block) showing "Short Extra Flagstaff" variety, fresh and fine, large part og., the variety unmounted og. Gi = £ 350+.
Provenance: Grosvenor, London, 17 March 2011, lot 471.

145a 田* **150** (€ 150)

145b 田* **160** (€ 160)



5087

- 5087** 1936 (May 6): Silver Jubilee 6 d. light blue & olive-green, a used example, Plate 3, Row 2, stamp 5 showing "Lightning Conductor" variety, cancelled by Bathurst cds of the first day of issue leaving the variety clear Gi = £ 350.

145c **100** (€ 100)



5088



5089

Gibbons

Start price
in CHF Start price
approx. €

- 5088** 1936 (May 6): Silver Jubilee 1 s. slate & purple in an unused corner block of four from lower left of sheet, Plate 1, Row 9, stamp 1 (first stamp in block) showing "Extra Flagstaff" variety with the variety officially erased, fresh and fine appearance but aged hinge remnant on second stamp, the variety unmounted og. Very scarce.
Provenance: Bridger & Kay, London, 22-23 Sept 1980, ex lot 1041.

146a var 田** **200** (€ 200)

- 5089** 1936 (May 6): Silver Jubilee 1 s. slate & purple, an unused corner block of four from top left of sheet, Plate 2, Row 2, stamp 1 showing "Short Extra Flagstaff" variety, fresh and fine, large part og. with three stamps, including the variety, unmounted og. Gi = £ 425+.

146b 田** **150** (€ 150)



5090



ex 5092

- 5090** 1936 (May 6): Silver Jubilee 1 s. slate & purple, an unused corner block of four from top right of sheet, with requisition number 097 in margin, Plate 3, Row 2, stamp 5 (third stamp in block) showing "Lightning Conductor" variety, fresh and very fine but for minor corner bend in margin only, unmounted og. Scarce Gi = £ 425+.

146c 田** **160** (€ 160)



ex 5091

- 5091** 1938/46: Pictorial definitive set of sixteen unused, each perforated hooded SPECIMEN, fresh and very fine, large part og. A very scarce set Gi = £ 550.
- 5092** 1946 (Aug 6): Victory, the set of two values each in vertical strips of three, each perforated by hooded SPECIMEN, fresh and fine appearance, the 1½ d. with scuff on reverse of lower stamp, unmounted og. Rare in multiples Gi = £ 330+.
- 5093-96** NO LOT

150s/161s * **200** (€ 200)

162s/163s ** **120** (€ 120)

Gold Coast

1875/76, Watermark Crown CC, Perf. 12 ½



Means of transport over the River Densu
in the Gold Coast



5097

5097 1874/75: De La Rue composite Essay, stamp size on thick card, with "GOLD COAST" and "POSTAGE / ONE PENNY" all hand-painted in deep blue on Chinese white with central vignette showing the De La Rue head-plate printed in blue. Not illustrated in "The De La Rue Collection". Two small stains do not detract from the appearance of an exquisite and unique archival Proof.

Gibbons		Start price in CHF	Start price approx. €
1 Essay	(*)	750	(€ 760)

1876/84, Watermark Crown CC, Perf. 14



ex 5098



5099

5098 1879: De La Rue ½ d. olive-yellow and 6 d. green, Imperforate Proofs on watermark Crown CC paper, good to large margins all round and of fresh colours, the 2 d. with minor corner bend unapparent on face, part og. Scarce.

5099 1876/79: ½ d. yellow-olive, wmk. Crown CC, perf. 14, an unused block of four, fresh and fine, large part og. with lower pair unmounted og. Gi = £ 380+.
Provenance: RL, London, 15 Feb 1978, lot 66.

4 Proof	*	250	(€ 255)
4	田*	140	(€ 140)



View of Quittah Beach



5100

Gibbons

Start price
in CHF Start price
approx. €

- 5100** 1876/79: ½ d. olive-yellow, two horizontal pairs and a horizontal strip of four, used on 1880 cover to Altensteig, Württemberg all tied by "B27" obliterators with QUITTAH despatch cds (July 7) at right. 'Paid / Liverpool / Br. Packet' transit cds in red (Aug 6) and reverse with Altensteig arrival cds (Aug 8). A delightful and famous cover.

Provenance: Collection Colin McCaig

Collection 'Ashanti' (Robert Nelson), SG, London, 24 Jan 1991, lot 553

Collection John Sacher, Spink, London, 12 Nov 2009, lot 232.

4



2'000 (€2'020)



5101

- 5101** 1876/79: 1 d. blue in a horizontal strip of four, used on 1879 cover to France tied by "556" obliterators with "PAID AT CAPE COAST CASTLE" datestamp at left (Oct 8) and manuscript '3' (pence) credit in red crayon below. 'Paid / Liverpool / Br. Packet' transit cds in red (Nov 12) and London cds on front, arrival on reverse. A fine and most attractive cover. Cert. BPA (1975).

Provenance: Collection Georges Lamy.

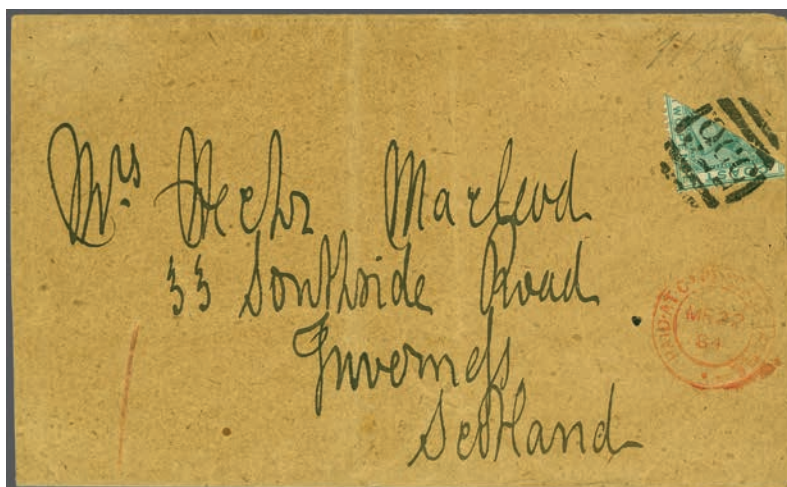
5



250 (€255)



5102



5103



5104

Gibbons

Start price
in CHF Start price
approx. €

- 5102** 1876/79: 2 d. green, wmk. Crown CC, perf. 14, an unused example on small card, overprinted CANCELLED in black (Samuel Type D4). Some slightly rough perfs. at base but very scarce and most attractive.

Provenance: Collection 'Ashanti' (Robert Nelson), SG, London, 24 Jan 1991, lot 70.

- 5103** 1876/79: 2 d. green, a diagonally bisected example, lower right half, tied to 1884 Newspaper wrapper addressed to Inverness by "556" obliterator with "PAID AT CAPE COAST CASTLE" despatch datestamp (March 22) below in red. Manuscript '1' (penny) credit in red below. A rare and most appealing usage. Cert. BPA (1975) Gi = £ 4'250.

- 5104** 1876/79: 6 d. orange, wmk. Crown CC, perf. 14, an unused block of four of fine colour, fresh appearance, regummed but nevertheless a very rare stamp in a multiple - no example in the 'Ashanti' or Castillejo collections Gi = £ 1'400+.

6 spec (*) **150** (€ 150)

6a ☒ **1'200** (€ 1'210)

8 田(*) **350** (€ 355)



5105



SS 'Sherbro'

- 5105** 1876/84: 6 d. orange, a diagonally bisected example used in combination with scarce 1883 1 d. blue wmk. Crown CA, used on 1884 cover to Bavaria endorsed 'per S.S. Sherbro' tied by "554" obliterator in black with 'Accra' code C circular datestamp (Feb 27) at left. '3' and '1' (pence) credit markings in red manuscript and 'Paid / Liverpool / Br. Packet' transit in red (April 9) and reverse with Weissenburg arrival cds (April 8, error) on reverse. Cover trimmed at base and the 1 d. adhesive lifted for checking but a very rare usage and not unattractive. Cert. BPA (1993) Gi = £ 5'000.

8a+ 10 ☒ **2'000** (€ 2'020)

1883/91, Watermark Crown CA, Perf. 14



5106



5107



ex 5108

		Gibbons	Start price in CHF	Start price approx. €
5106	1883 (Jan): ½ d. olive-yellow, wmk. Crown CA, perf. 14, a used horizontal strip of three, neatly cancelled by three strikes of the "B27" obliterator of Quittah. An attractive multiple Gi = £ 255+.	9	100	(€ 100)
5107	1883 (May): 1 d. blue, wmk. Crown CA, perf. 14, an unused block of four, marginal from right of sheet, of fine fresh colour and delightful appearance, the gum slightly disturbed at top but an outstanding multiple, large part og. Note the smaller value tablet 'ONE PENNY' slightly off-centre to the stamp. There are believed to be but three blocks known - one ex Castillejo, Soler y Llach, Feb 2008, lot 542, the other resides in the collection of His Majesty King Charles III. A rarity Gi = £ 3'600+. <i>Provenance: Collection George H. Boucher.</i>	10	2'500	(€ 2'525)
5108	1884: De La Rue Imperforate Colour Trials on wmk. Crown CA paper, ½ d. green, 1 d. rose-carmine, 3 d. olive-yellow, 4 d. deep mauve and 2 s. deep brown, four values being marginal, all fresh and very fine, large part og. Rare. <i>Provenance: ½ d. - 4 d. values ex collection E.K. Lickfold.</i>	11+ 12+ 15+ 16+ 19a Proofs	*	750 (€ 760)
5109	1884/91: Definitive set, wmk. Crown CA, perf. 14, the complete unused set of nine values incl. most of the 'a' number shades, all largely fresh and fine, large part or unmounted og. Gi = £ 400+.	11/19a	*/**	120 (€ 120)



5110

5110	1884/91: ½ d. green, 1 d. carmine and marginal pair of 4 d. deep mauve used on 1894 registered triple rate cover to Trieste, all tied by "AKUSE" code C circular datestamps in blue (June 2) with "Accra" transit on reverse. 'Registered / Liverpool' and London transits (June 25) and reverse with Trieste arrival cds (June 28). Minor scuffs at top but a charming and scarce franking. <i>Provenance: Collection John Sacher, Spink, London, 12 Nov 2009, lot 189.</i>	11a+ 12a+ 16	✉	250 (€ 255)
------	---	-----------------	---	----------------



View of the lagoon and landing beach at Berraku



5111

Gibbons

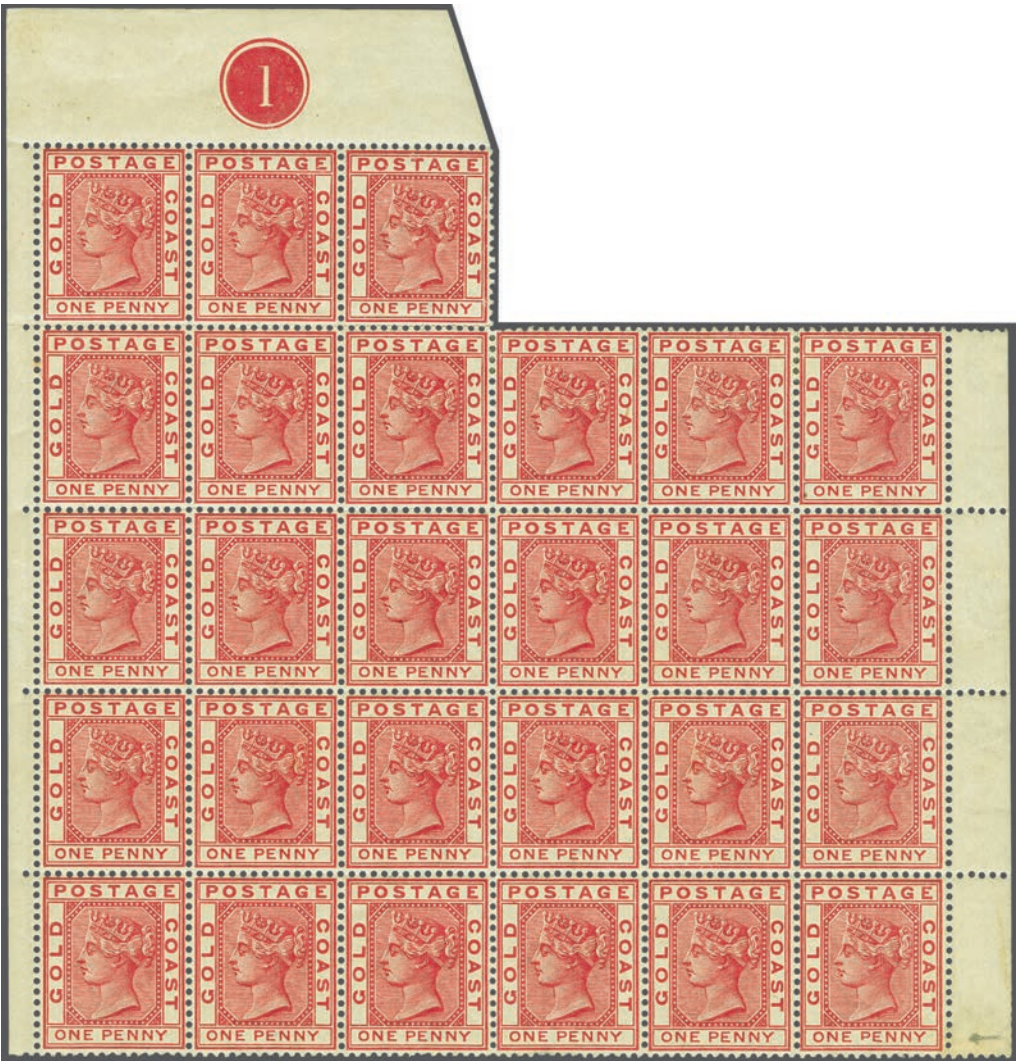
Start price in CHF Start price approx. €

- 5111** 1884/91: 1 d. carmine in a horizontal pair, used with diagonally bisected example on 1894 cover to Stuttgart, Germany tied by scarce "BERRAKU" circular datestamps without code letter (July 14, day inverted) in black. Reverse with "Accra" cds (July 16), 'Liverpool / Br. Packet' cds (Aug 20) in black and Stuttgart arrival. Short paid by 1½ d. and struck with circular "T" in black and FORWARD with two strikes of 'Porto' in black. Charged '10' pfennig due upon arrival in blue manuscript. A rare and spectacular cover. Cert. BPA (1985)
Gi = £ 5'000.

12b+ 12



2'000 (€ 2'020)



5112

Gibbons

Start price in CHF Start price approx. €

5112 1884/91: 1 d. carmine, wmk. Crown CA, perf. 14, an unused irregular block of twenty-seven with Plate number '1' at top, last stamp (Row 5, stamp 6) showing variety "Short "P" and distorted "E" in PENNY", fresh colour and fine, large part or unmounted og. A most attractive multiple Gi = £ 480+.

12c+ 12 田*/** 150 (€ 150)

1889 (March), Provisional Surcharge



5113

5113 1889 (March): Provisional 1 d. surcharge on 6 d. orange, a fine unused example with 7 mm. spacing, of brilliant fresh colour, unmounted og. and rare thus Gi = £ 150.

20 ** 80 (€ 80)

1889/1902, Watermark Crown CA



5114

Gibbons

Start price in CHF Start price approx. €

- 5114** 1900: "Appendix A" sheet from the De La Rue records, dated "Jan 13th 1900 / Northern Nigeria / Req. 87 / 1899" in manuscript at top; showing four rows with Gold Coast perforated adhesive stamps as issued between 1894 and 1900: ½ d., 1 d., 2½ d., 3 d., 6 d., 1 s., 5 s., 10 s., and 20 s. (£1); arranged alongside proposed Northern Nigeria issue of 1900 - these being shown by IMPERIUM Imperforate universal Keyplate designs (9) in the same colours. Interestingly, eight of the Northern Nigeria issue are marked in pencil with a tick as selected, the 10 s. value is marked with a pencil cross but was indeed selected in these two colours (green and brown). Slight aging and a few scuffs, but immensely rare and one of the few Appendix sheets arranged thus, illustrated in "The De La Rue Collection", edited by Frank Walton RDP on page 5168 and in the "Postal Services of the British Nigeria Region" by Jack Ince and John Sacher on Plate XIII. Unique and splendid.
 Provenance: Grosvenor, London, 27-28 Nov 2002, lot 259.

1/9+ (26/34)

(*)

3'500 (€3'535)



5115

Gibbons

Start price
in CHF

Start price
approx. €

5115 1897: "Appendix A" sheet from the De La Rue records, manuscript dated "March 19th 1897" at top, with proposals for the colour scheme for the issue using the De La Rue IMPERIUM imperforate 6 d. universal keyplate, with sixteen imperforate examples from 1/2 d. to 10 s. with the 1/2 d., 1 d., 2 1/2 d., 3 d., 6 d., 1 s., 2 s., 5 s. and 10 s. being ticked as accepted in pencil; together with unaccepted 2 d., 4 d., 5 d., 2 s. 6 d., 4 s., £ 1 and £ 5 values. A stunning Appendix sheet, folded below the proposed 4 d. and 10 s. and the proposed 5 d. and with closed tear at top, otherwise delightful. Illustrated in "The De La Rue Collection" edited by Frank Walton RDP on page 3305. Unique.

*Provenance: Collection Whitfield, RL, London, 24 Nov 1976, lot 200
Grosvenor, London, 27-28 Nov 2002, lot 252.*

(22/34
Essays)

(*)

4'000 (€ 4'040)



ex 5116



5117



5118

Gibbons

Start price
in CHF Start price
approx. €

- 5116** 1889/94: The Keyplate set of four values: 5 s., 10 s., 20 s. (2), overprinted SPECIMEN in black, fresh and very fine, large part og. Scarce and attractive set $G_i = £ 450$. 22s/25s spec * **180** (€ 180)
- 5117** 1889/94: 10 s. dull mauve & blue, a perforated Proof on card from the De La Rue archives, the dull mauve keyplate design printed, the "GOLD COAST" legend and "5s." value tablet painted in red and in Chinese white on pink respectively. Illustrated in "The De La Rue Collection" edited by Frank Walton RDP on page 3303. Superb and unique. Cert. BPA (1977). *Provenance: Collection E.K. Lickfold.* 23 Proof (*) **500** (€ 505)
- 5118** 1889: 10 s. dull mauve & carmine, an unused example of this elusive shade variety, fresh and fine appearance, large part og. Rare. Cert. BPA (2003) $G_i = £ 1'100$. 23a * **400** (€ 405)



5119



5120



ex 5121

- 5119** 1894: 20 s. dull mauve & black on red, wmk. Crown CA, a fine unused example overprinted SPECIMEN in black, variety "Short 'N' in SPECIMEN", fresh and very fine, large part og. Rare, with just six, perhaps seven, examples possible. 25s var * **150** (€ 150)
- 5120** 1894: 20 s. dull mauve & black on red, wmk. Crown CA, a fine unused example, variety "Watermark Inverted", fresh and very fine, superb large part og. A scarce stamp $G_i = £ 650$. 25w * **250** (€ 255)
- 5121** 1898/1902: Bicoloured definitive set of ten values to 10 s., wmk. Crown CA, overprinted SPECIMEN in black, fresh and fine, large part og. $G_i = £ 325$. 26s/34s spec * **140** (€ 140)



5122

- 5122** 1898/1902: 2 s. green & carmine, an unused block of eighteen (6 x 3), marginal from top left of sheet, beautifully fresh and fine but for slight vertical bend on interpanneau margin at right, large part og. with most unmounted og. A scarce and most attractive multiple $G_i = £ 720+$. 32 田/** * **250** (€ 255)



5123



ex 5124

- 5123** 1899: De La Rue Die Proof for the proposed but unissued £ 5 value, with GOLD COAST and £5 Duty Plate only, printed in black on glazed white card, dated "2 MAR 99" at left in blue. Fresh, fine and rare.

- 5124** 1901 (Oct 6): 1 d. surcharged on 6 d. dull mauve & violet, an unused block of four, variety "ONE Omitted" and lower stamps showing damage to "PE" of "PENNY", fresh and fine, large part og. with lower pair unmounted og. Normal stamp for comparison, a rare multiple Gi = £ 1'100+.
Note: The surcharge was set up in a forme of 60 (6 x 10), each sheet therefore passed twice through the Press.

Gibbons		Start price in CHF	Start price approx. €
Unissued Proof	(*)	250	(€ 255)
36a	田*	350	(€ 355)

1902 and Later Issues



ex 5125




ex 5126



ex 5127

- 5125** 1902: Definitive set of eleven values to £ 1 unused, wmk. Crown CA, overprinted SPECIMEN in black, large part og. Gi = £ 300.
- 5126** 1902: 2½ d. dull purple & blue, 6 d. dull purple & violet, 1 s. green & black and 10 s. green & brown, unused examples overprinted SPECIMEN in black, all four with variety "Broken "M" in SPECIMEN", fresh and fine, large part og. A rare assembly with just seven possible of each value.
- 5127** 1904/06: Definitive set of seven, wmk. Multiple Crown CA, complete unused, together with 2 s. 6 d. green & yellow overprinted SPECIMEN in black; and 2½ d. dull purple & ultramarine in a upper left corner marginal block of four from Plate 1 and 6 d. dull mauve & violet on chalky paper in a lower left corner marginal block of four from Plate 1. Generally fresh and fine selection Gi = £ 700+.
- 5128** 1913/21: Definitive set of twelve values, wmk. Multiple Crown CA, the complete unused set and colour shades / Dies / coloured backs on leaves (30 stamps) with ½ d. (2), 1 d. (2), 2 d. (2), ½ d., 3 d. (5), 6 d., 1 s. (4), 2 s. (3), 2 s. 6 d. (2), 5 s. (3), 10 s. (3) and 20 s. with one showing Plate 6 in lower margin and the other from top right of sheet showing sheet '127' requisition number. A marvellous and scarce group Gi = £ 700+.

(Photo =  www)

38s/48s	*	120	(€ 120)
41s+ 43s+ 44s+ 47s var	*	200	(€ 200)
49/57+ 57s+ 52+ 54a	田*/**	250	(€ 255)
71/84	*/**	220	(€ 220)



ex 5129



5130



ex 5131

Gibbons

Start price
in CHF Start price
approx. €

- 5129** 1913: De La Rue Colour Trials for the 1 d. value (2) in unissued colours, Imperforate on white wove paper without watermark, printed in green without gum and in blue with large part og., each overprinted SPECIMEN in black. Scarce.

72 Proofs */(*)

200 (€ 200)

- 5130** 1913/21: £ 1 purple & black on red, an unused marginal pair from top of sheet with Plate Number '80' in margin, fresh and very fine, unmounted og. A choice multiple of a scarce stamp Gi = £ 340+.

84 **

175 (€ 175)

- 5131** 1921/24: The complete set of fourteen values (incl. Gi 100as) to £ 2 green & orange, fresh and fine, large part og. A scarce and fine set Gi = £ 585.

86s/102s+
100as ***220** (€ 220)

5132



5133

- 5132** 1921/24: Die II, 15 s. dull purple & green on chalky paper, an unused block of four of fine colour, large part og. A very scarce stamp in a multiple Gi = £ 600+.

Provenance: Phillips, London, 7 Nov 1996, lot 337.

100a 田*

200 (€ 200)

- 5133** 1921/24: Die I, £ 2 green & orange, wmk. Multiple Crown CA, an unused block of four, centred to top and of fresh colour, minimal trace of rub on one stamp not detracting from the appearance, large part og. with lower pair unmounted og. A very rare stamp in a multiple Gi = £ 2'400+.

102 田*/**

800 (€ 810)

ex 5134

- 5134** 1928 (Aug 1): Harrison's Christiansborg definitive issue, the set of ten values complete, overprinted SPECIMEN in black, the 1 d. with one short perf., otherwise fresh and fine, large part og. Gi = £ 300.

103s/112s
spec ***120** (€ 120)



5135



5136



ex 5137

Gibbons

Start price
in CHF Start price
approx. €

- 5135** 1928: Harrisons Christiansborg definitive issue, 1 d. red-brown, an imperforate Proof corner block of four from top left of sheet in issued colour on watermarked paper, each stamp overprinted SPECIMEN in black, left hand pair with vertical crease, unmounted og. Just this block of four from the original Trial block of six recorded (Johnny Johnson habitually destroyed damaged material) and thus unique.

Provenance: H.F. 'Johnny' Johnson.

104 Proof 田** **300** (€ 305)

- 5136** 1928: Harrisons Christiansborg definitive issue, 3 d. bright blue, an imperforate Proof corner block of four from top left of sheet in issued colour on watermarked paper, each stamp overprinted SPECIMEN in black, two stamps with thins, unmounted og. Just this block of four from the original Trial block of six recorded (Johnny Johnson habitually destroyed damaged material) and thus unique.

Provenance: H.F. 'Johnny' Johnson.

108 Proof 田** **300** (€ 305)

- 5137** 1928: Harrisons Christiansborg definitive issue, Colour Trial Proofs for the 6 d. value in blocks of four, one in bright purple and the other in emerald green, each with head-plate in brown, each overprinted HARRISONS / SPECIMEN in black, fresh and fine, somewhat dried unmounted og. Scarce and most attractive, these multiples possibly also saw service as Salesman's sample stamps.

109 Proofs 田** **250** (€ 255)



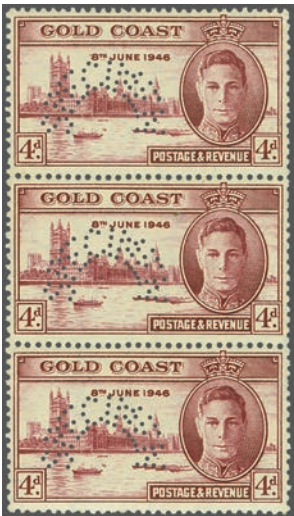
5138

- 5138** 1926: Harrisons photographic Essay for the Christiansborg definitive issue, 2 s. 6 d. value in dull grey-green & bright blue, imperforate on thick card (94 x 105 mm.) endorsed "No. 2" and "Duplicate / 15-9-26" at top in ink, manuscript in pencil at base "2 colours plate ptg.". Slight aging at edges of the card not detracting from a remarkable and rare Essay.

111 Essay (*) **750** (€ 760)



ex 5139



ex 5140

Gibbons

Start price
in CHF Start price
approx. €

- 5139** 1935 (May 6): Silver Jubilee, the set of four values in lower left corner blocks of four, first stamp in each block showing variety "Extra Flagstaff", tiny fault at top of second stamp in 1 d. block otherwise very fresh and fine, large part og. with lower stamps unmounted og. Scarce Gi = £ 750+. 113a/116a 田*/** **220** (€ 220)
- 5140** 1946 (Oct 14): Victory, the set of two values, 2 d. slate violet perf. 13½ x 14, 4 d. claret perf. 13½, each in vertical unused strips of three, perforated SPECIMEN, fresh and very fine, 133s+ 134as unmounted og. As despatched by the UPU, scarce in multiples Gi = £ 330+. spec ** **150** (€ 150)



ex 5141

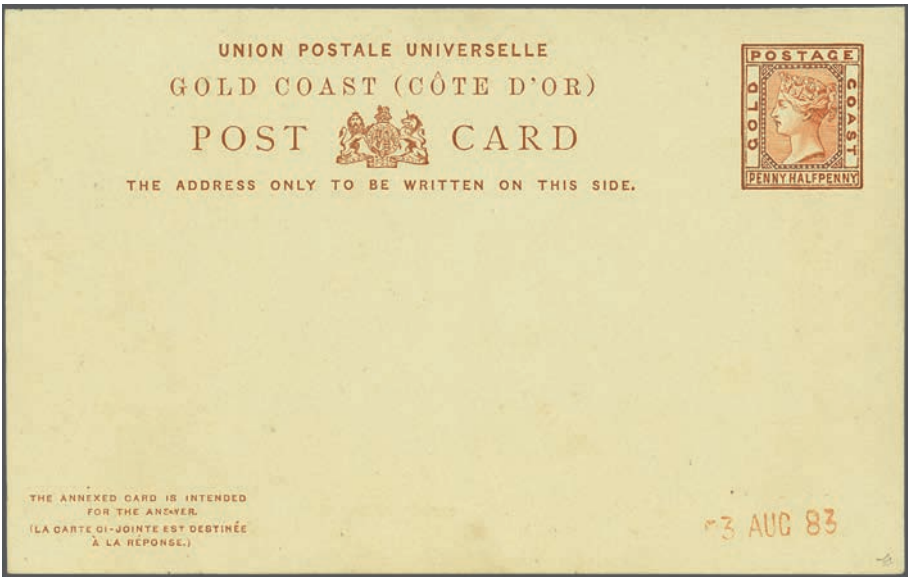
- 5141** 1948 (July 1): Pictorial definitive issue, the complete set of twelve to 10 s., perforated SPECIMEN, fresh and very fine, large part og. Scarce Gi = £ 475. 135s/146s * **200** (€ 200)

Postal Stationery



5142

- 5142** 1883: De La Rue Die Proof for the 1½ d. postal stationery card, printed in black on white glazed card. Scarce and most attractive. (*) **250** (€ 255)



ex 5143

Gibbons
Start price in CHF Start price approx. €

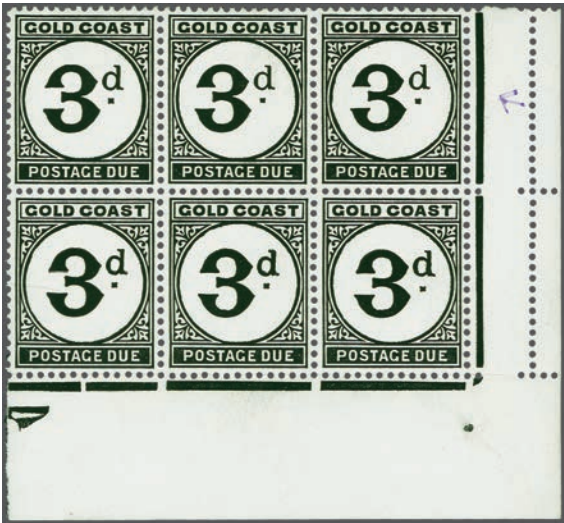
- 5143 1883: Essay for the 1½ + 1½ d. postal stationery reply cards, two separated cards split for display, each card with printed UPU / Gold Coast legend, the stamp area entirely hand-painted on each in deep red-brown or pale red-brown (vignette), the despatch card handstamped "3 AUG 83" in red. The reply card with top perfs. removed but rare and splendid Proofs.
Provenance: Collection Colin McCaig
Collection 'Ashanti' (Robert Nelson), SG, London 24 Jan 1991, lot 710.

✉ 1'200 (€ 1'210)

Postage Due



5144



5145

- 5144 1951/52: Postage Due 2 d. black, wmk. Multiple Script CA, an unused block of six, corner marginal from upper right of sheet, showing error "St. Edward's Crown Watermark", fresh and fine, violet arrow in margin, unmounted og. Rare Gi = £ 750+.
- 5145 1951/52: Postage Due 3 d. black, wmk. Multiple Script CA, an unused block of six, corner marginal from lower right of sheet, showing error "St. Edward's Crown Watermark", fresh and fine, violet arrow in margin, one stamp with hinge remnant, five unmounted og. Rare Gi = £ 700+.

D5b+ D5 田** 200 (€ 200)

D6a+ D6 田*/** 200 (€ 200)

Nigeria – Lagos

Stampless Covers



View of Juju Rock by Jebba



5146



Captain John Ford Elkington

Gibbons

Start price
in CHF

Start price
approx. €

- 5146** 1899: Double rate cover from Jebba to Reading, Berkshire sent stampless and endorsed "No stamps available, J. Elkington, Commanding 1st W.A.F.F." (West African Frontier Force) and "Jebba 29.5.99" at top right. Reverse with transit of boxed "THE ROYAL NIGER COMPANY / CHARTERED & LIMITED / 23 JUN. 1899 / POST OFFICE / BURUTU" in violet (Gi. Type 6). Taxed on arrival at "4d." in blue manuscript, altered to 2 d. with "2d. / 620" charge at Reading (July 10) on arrival. File fold but very scarce.

Note: Sent by Captain J. Elkington, Commanding Officer of the W.A.F.F. which was formed by Battalions from Lagos, Niger Coast and Sierra Leone detachments. Elkington served with the Royal Warwickshire Regiment and was with the W.A.F.F. from 11 March 1899 until 23 May 1900. He was promoted to Major on 10 April 1901. His First World War experiences were extraordinary, cashiered (wrongly) for cowardice from the British Army, he fought instead for the French forces and was awarded the Croix du Guerre and Palm and the Médaille Militaire.



250 (€ 255)

1874/75, Watermark Crown CC, Perf. 12 ½



Premises of De La Rue



5147

Gibbons

Start price
in CHF Start price
approx. €

5147

De La Rue Master Die Proof on glazed white card with the head-plate printed in violet, with hand-painted Duty Plate ONE PENNY in red, the ornamental surround hand-painted in violet with LAGOS / POSTAGE in grey. Handstamped "16 JAN 74" in black and signed off in manuscript "Approved M.S.". Illustrated in Ince & Sacher "The Postal Services of the British Nigeria Region" on page 66. A spectacular and unique Essay.

Note: An order was received by De La Rue from the Crown Agents on 6 January 1874 for a Die, a Keyplate of 60 and four Duty Plates. It was stated that the stamps should be "of a similar design as those supplied to Sierra Leone in 1871". De La Rue acknowledged this order on 16 January and submitted this Essay which was approved on the same day.

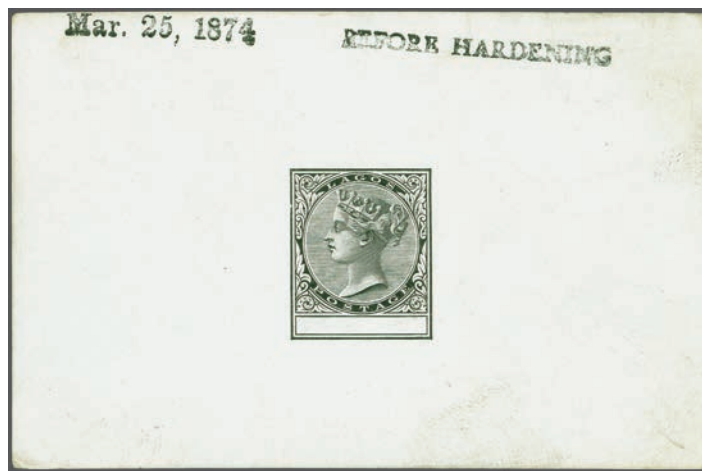
Provenance: Collection H.G. Porter

Collection Col. J.R. Danson, RL, London, 10 March 1971, lot 1507.

1 Essay

(*)

3'500 (€3'535)



5148



5149

Gibbons

Start price
in CHF

Start price
approx. €

- 5148** De La Rue Master Die Proof with blank Duty Plate, printed in black on glazed white card (92 x 60 mm.) and struck with "BEFORE HARDENING" and dated "Mar. 25, 1874" in black. Illustrated in Ince & Sacher "The Postal Services of the British Nigeria Region" on page 66. Slight soiling but extremely rare.

Note: The Colonel Danson collection contained a (faulty) Die Proof dated on the same day endorsed "Penny Halfpenny" in pencil manuscript, Ince & Sacher believed this to be an erroneous date. According to Ince & Sacher just two dated Die Proofs are known.

Provenance: Collection H.G. Porter.

1 Proof (*) **1'000** (€ 1'010)

- 5149** De La Rue Master Die Proof without Duty Plate, printed in lilac-mauve (issued colour of the 1 d. value), stamp size and imperforate on white glazed paper adhered to card, overprinted SPECIMEN in black (Samuel Type D9). This Proof was used in the De La Rue Exhibition display of 1872 and thus is not illustrated in "The De La Rue Collection" edited by Frank Walton RDP. Unique.

1 Proof (*) **750** (€ 760)



ex 5150



ex 5151



ex 5152



ex 5153



ex 5154

- 5150** 1 d. lilac-mauve, 2 d. blue and 6 d. blue-green, wmk. Crown CC, perf. 12½, unused examples overprinted SPECIMEN in black (Samuel Type D11), all with large part og. Extremely rare, between 1 and 6 examples are recorded of the first issue with the 'Specimen' overprints, probably utilised as file copies by De La Rue: see "The De La Rue Collection" edited by Frank Walton RDP page 4509 for similar examples.

1+ 2+ 6 spec * **1'200** (€ 1'210)

- 5151** 3 d. red-brown and 1 s. orange (15½ mm. Duty Plate), wmk. Crown CC, perf. 12½, unused examples overprinted SPECIMEN in black (Samuel Type D11), the 1 s. with perfs. trimmed at base, both with part or large part og. Extremely rare, between 1 and 6 examples are recorded of the first issue with the 'Specimen' overprints, probably utilised as file copies by De La Rue: see "The De La Rue Collection" edited by Frank Walton RDP page 4509 for similar examples.

3+ 8 spec * **750** (€ 760)

- 5152** The first issue set of six to 1 s. orange (15½ mm.) unused, wmk. Crown CC, perf. 12½, overprinted CANCELLED horizontally in black (Samuel Type D6), all of vibrant colour, generally well centred, somewhat typical erratic perforations, fresh and very fine, large part og. An exceptional and rare set.

Provenance: Spink, London, 8 Dec 2005, lot 3860.

1/8 * **1'000** (€ 1'010)

- 5153** The first issue set of six to 1 s. orange (16½ mm.) unused, wmk. Crown CC, perf. 12½, overprinted CANCELLED horizontally in black (Samuel Type D7) and the 1875 1 s. value overprinted Samuel Type D4, and applied to card from the De La Rue archives, all of good colour, some perforations trimmed, trivial aging but fine. Illustrated in "The De La Rue Collection" edited by Frank Walton RDP on page 4509. An exceptional and rare set.

1/8a (*) **750** (€ 760)

- 5154** The first issue set of six to 1 s. orange (16½ mm.) unused, wmk. Crown CC, perf. 12½, with additional 3 d. red-brown, all of good colour, generally well centred, somewhat typical erratic perforations, the 6 d. with some tone spots, the rare 1 s. orange very fine, part og. or large part og. A scarce set Gi = £ 1'000+.

1/8a * **220** (€ 220)



5155



5156



5157



5159

- 5155** 1 d. lilac-mauve, wmk. Crown CC, perf. 12½, an unused block of four of fine delicate colour, well centred, somewhat typical erratic perforations, large part og. A rare multiple Gi = £ 320+.
- 5156** 3 d. red-brown, wmk. Crown CC, perf. 12½, an unused block of four of fine colour, well centred, somewhat typical erratic perforations, large part og. A rare multiple Gi = £ 520+.
- 5157** 3 d. red-brown, wmk. Crown CC, perf. 12½, a superb used example cancelled "LAGOS" code B datestamp (Feb 25, 1875) in first week of issue: Sacher and Ince record February 17th as the earliest date of use.

Gibbons		Start price in CHF	Start price approx. €
1	田*	150	(€ 150)
3	田*	200	(€ 200)
3		100	(€ 100)



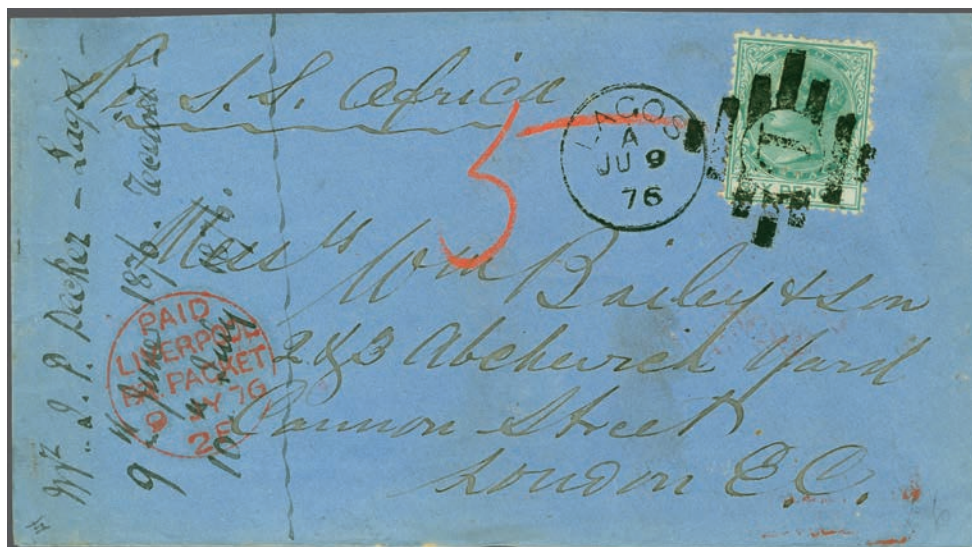
5158



Street scene in Lagos

- 5158** 4 d. carmine and 6 d. blue-green, wmk. CC, perf. 12½, used on 1874 registered cover to Wolverhampton tied by two fine strikes of "LAGOS" code B datestamps (Dec 7) in black. Manuscript credit '5 / 2 = 7d.' in red at left and obscured "PAID / LIVERPOOL / BR. PACKET" cds in red (Jan 8, 1875) and double arc "REGISTERED / LIVERPOOL" cds of the same day alongside. Reverse with Wolverhampton arrival cds (Jan 9) in black. A superbly attractive and rare cover.
*Provenance: Collection William C. Hinde
Collection R.B. Sanderson, RL, London, 17 April 1980.*
- 5159** De La Rue Imperforate Imprimatur for the 6 d. value in green on watermarked Crown CC ungummed paper, margins clear to good on thre sides, extremely rare.
*Provenance: Collection H.G. Porter
Collection Col. J.R. Danson, RL, London, 10 March 1971, lot 1509.*

5+ 6	✉	1'500	(€ 1'515)
6 Proof	(*)	500	(€ 505)



5160

Gibbons

Start price
in CHF Start price
approx. €

- 5160** 6 d. blue-green, wmk. CC, perf. 12½, a used example on 1876 cover to London endorsed "per S.S. Africa" tied by "L" in bars obliterator with "LAGOS" code A datestamp (June 9) alongside in black. Manuscript credit '5d.' in red at left and "PAID / LIVERPOOL / BR. PACKET" cds in red (July 9, 1875). London arrival cds on reverse (July 10). A most attractive and rare single franking.

Provenance: Collection R.B. Sanderson, RL, London, 17 April 1980, lot 202.

6

**1'200** (€1'210)

5161



5162



5163



5164

- 5161** 1 s. orange, wmk. Crown CC, perf. 12½, an unused example from the original February 1875 printing with ONE SHILLING measuring 15½ mm., somewhat typical erratic perforations, well centred and of fine colour, slightest gum wrinkle on large part og. Signed A. Diena Gi = £ 700.
- 5162** 1 s. orange with 16½ mm. Duty Plate, wmk. Crown CC, perf. 12½, an unused horizontal pair from top right corner of the sheet with serial number "1" in margin, of vibrant colour, fresh and very fine, large part og. Rare Gi = £ 850+.
- Provenance: Collection H.G. Porter; Collection L. Du P. Chiappini.
- 5163** 1 s. orange, wmk. Crown CC, perf. 12½, an unused block of four from the original July 1875 printing with ONE SHILLING measuring 16½ mm., well centred and of fine fresh colour, part og. A very rare stamp in a multiple Gi = £ 1'700+.
- 5164** 1 s. orange, 16½ mm. Duty Plate, wmk. Crown CC, perf. 12½, a superb used example cancelled "LAGOS" code B datestamp (July 24, 1875) in first week of issue: Sacher and Ince record July 19th as the earliest date of use.

8

*

250 (€255)

8a

*

500 (€505)

8a

**600** (€605)

8a

120 (€120)

1876/79, Watermark Crown CC, Perf. 14

- 5165** The small unused group of the issue with 1 d. lilac-mauve (2 in differing shades), 2 d. blue single and block of four, 3 d. red-brown (2) or chestnut (signed Senf), 6 d. green (2), largely fine and fresh examples, part or large part og. A scarce group Gi = £ 1'150+. (Photo = www)

10/13+ 15

**200** (€200)



5166



5167



5168

- 5166** 2 d. blue, wmk. Crown CC, perf. 14, an unused block of four, marginal from base of sheet with Plate Number "1" in margin, of fresh colour, fine large part og. with lower pair unmounted og. Scarce Gi = £ 320+.
- 5167** 6 d. green, wmk. Crown CC, perf. 14, an unused block of eight (4 x 2), marginal from top of sheet with Plate and Serial Number "1" in margin, third stamp with two slight marks on face otherwise of fine fresh colour, mounted in margin only, stamps unmounted og. A rare and most attractive multiple Gi = £ 1'200+.
- 5168** 1 s. orange, 16½ mm. Duty Plate, wmk. Crown CC, perf. 14, an unused example of outstanding freshness, minute thin spot on part og. An attractive example of an extremely rare stamp Gi = £ 950.

Gibbons

Start price
in CHFStart price
approx. €

11	田**	140	(€ 140)
15	田**	400	(€ 405)
16	*	300	(€ 305)

1882 (June), Watermark Crown CA



ex 5169



5170



ex 5171



5172

- 5169** The set of four values unused, wmk. Crown CA, perf. 14, fresh and very fine, large part og. A remarkably scarce set: just 24'540 sets can exist (the printing figure for the 3 d. value), the catalogue values unusually not reflecting the amounts printed Gi = £ 450.
- 5170** 1 d. lilac-mauve, wmk. Crown CA, perf. 14, an unused block of four, corner marginal from upper left of sheet, with Plate Number "1" in margin, fresh and very fine, large part og. with lower pair unmounted og. Scarce Gi = £ 200+.
- 5171** 3 d. chestnut, wmk. Crown CA, perf. 14, an unused example, with diagonal "Specimen" in ink manuscript (Type DMS), fresh and fine, large part og., with issued stamp for comparison.
- 5172** 3 d. chestnut, wmk. Crown CA, perf. 14, an unused block of four, corner marginal from upper left of sheet, with Plate Number "1" in margin, diagonal crease in margin only otherwise fresh and fine, stamps unmounted og. Scarce multiple Gi = £ 120+.

17/20	*	200	(€ 200)
17	田**	100	(€ 100)
19s spec	*	175	(€ 175)
19	田**	80	(€ 80)



The Post Office in Lagos



5173



5174

- 5173** 3 d. chestnut, wmk. Crown CA, perf. 14, two examples used on 1885 registered cover to Torino, Italy tied by barred oval obliterations in black with "LAGOS" code A circular datestamp alongside (Dec 29). Oval "Registered / Liverpool" in black (Feb 1, 1886) and London transit in red of same day; reverse with Torino arrivals (Feb 3) in black. A scarce and most attractive cover. Signed Sorani.
Provenance: Collection John Sacher, Spink, London, 12 Nov 2009, lot 295.
- 5174** 3 d. chestnut and 1884 1 d. carmine, used on 1886 cover endorsed 'via Liverpool' to France each tied by barred obliterations with "LAGOS" code A cds (Oct 27) in black alongside. Manuscript "3d." credit in red at lower left and "PAID / LIVERPOOL / BR. PACKET" cds in red (Nov 28) and Levallois-Perret arrival on reverse (Dec 1). The reverse also shows the return address: "Côte Occidentale d'Afrique, Kotonou, via Liverpool and Lagos". A scarce and fine cover.

Gibbons		Start price in CHF	Start price approx. €
19	✉	300	(€ 305)
19+ 22	✉	250	(€ 255)

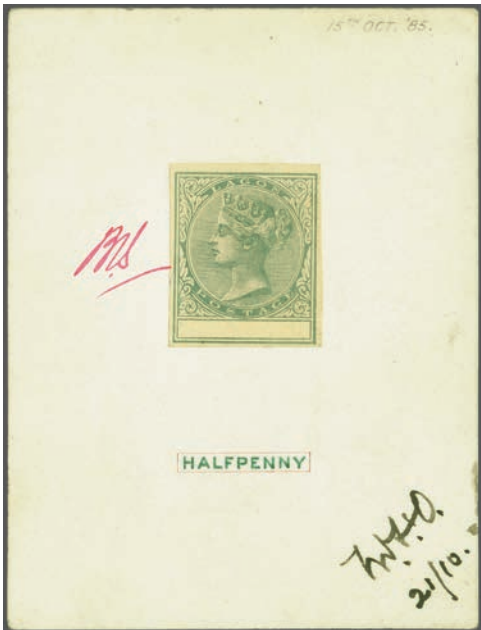


5175

- 5175** 4 d. carmine, wmk. Crown CA, perf. 14, an unused example of good colour, slight corner gum loss, large part og. A scarcer stamp than catalogue value suggests Gi = £ 225.

20	*	120	(€ 120)
----	---	-----	---------

1884/86, Watermark Crown CA



5176

Gibbons
Start price in CHF Start price approx. €

5176 De La Rue Master Proof for the ½ d. value, with Imperforate Imprimatur with blank Duty Plate printed in dull green on card (62 x 82 mm.) with "HALFPENNY" hand-painted in dull green with red surround below. Endorsed at top right "15th OCT '85", the Essay signed off as accepted in red at left and, once approved by the Crown Agents, signed again at lower right "21/10" in black manuscript. The ½ d. value was ordered (Oct 13) as a matter of urgency and De La Rue promised delivery in three weeks for an order of 60 sheets. A similar example, also dated 15 October 1884, is illustrated in "The De La Rue Collection" edited by Frank Walton RDP on page 4513. An extremely rare and wonderful Proof.
Provenance: Collection H.G. Porter
Collection Col. J.R. Danson, RL, London, 10 March 1971, lot 1534.

21 Essay (*) **2'000** (€ 2'020)



ex 5177



ex 5178

5177 ½ d. dull green and 1 d. rose-carmine, wmk. Crown CA, perf. 14, unused examples, each with diagonal "Specimen" in manuscript ink, fresh and very fine, part og. Scarce.
Provenance: Harmers, London, 8 July 2003, lot 760.

21s+ 22s * **250** (€ 255)

5178 De La Rue Colour Trial Proofs (3) for the proposed ½ d. value, all perforated 14 on medium wove unwatermarked paper, all three in green with HALFPENNY Duty Plates in brown, in pale blue-green or in blue. Extremely fine and very rare, ex the De La Rue archives and a probably unique trio.

21 Proofs (*) **600** (€ 605)



5179



5182

Gibbons

Start price
in CHF Start price
approx. €

- 5179** ½ d. dull green and pair of 1 d. rose-carmin, wmk. Crown CA, perf. 14, used on 1898 cover to Hamburg endorsed "Lagos Franco 12gr.", in combination with Germany 1890 10 pf. bright carmin pair all tied by oval "DEUTSCHE SEEPOST / LINIE / HAMBURG / WESTAFRIKA / XI" in violet (March 21), with Hamburg arrival (April 15) on reverse. A charming combination usage.

Provenance: Collection John Sacher, Spink, London, 12 Nov 2009, lot 323.

21+ 22

**200** (€200)

ex 5180



5183

- 5180** De La Rue Imperforate Imprimatur in issued colours for 2 d. grey, 4 d. pale lilac, 6 d. olive-green and 1 s. orange, all on Crown CC watermarked paper, the 6 d. with slight crease, otherwise fresh and very fine with part or large part og. An extremely rare group.

Provenance: Collection Col. J.R. Danson, RL, London, 10 March 1971, lot 1525.

23/26 Proofs

*

850 (€860)

5181

- 5181** 2 d. grey, wmk. Crown CA, perf. 14, an unused horizontal strip of six from the top left corner of the sheet with Plate and Serial Number "1" in margin, central fold in between the stamps, of fine fresh colour, superb large part og. with four stamps unmounted og. A scarce and delightful multiple Gi = £ 600+.

23

*/**

200 (€200)

- 5182** 2 d. grey, a horizontal pair used on 1887 cover to France tied by oval barred obliterations in black with "LAGOS" code A cds (Jan 27) in black alongside. Manuscript "3" in red crayon credit and "PAID / LIVERPOOL / BR. PACKET" cds in red (March 3) and reverse with Levallois-Perret arrival cds (March 4) in black. A fine cover, mailed just prior to the March 1887 issue in new colours being released.

23

**150** (€150)

- 5183** De La Rue Imprimatur, 6 d. olive-green, Imperforate on wmk. Crown CA paper, large part og. Scarce and very fine.

25 Proof

*

150 (€150)



5184

Gibbons

Start price
in CHFStart price
approx. €

- 5184** 1 s. orange, wmk. Crown CA, perf. 14, an unused block of eighteen (6 x 3), marginal from base of the sheet with Serial number "1" and Plate number "1" in margin, superbly fresh and fine, large part of unmounted og. A delightful and scarce multiple Gi = 400+.

26 田*/**

200

(€ 200)



ex 5185



ex 5186



5187



5188



5189

- 5185** High Values 2 s. 6 d. olive-black, 5 s. blue and 10 s. brown-purple, wmk. Crown CA, perf. 14, the set of three values overprinted SPECIMEN in black, fresh and very fine, large part og. Scarce Gi = £ 425.
- 5186** 2 s. 6 d. olive-black, wmk. Crown CA, perf. 14, an unused example with rounded corner perf. and fine, large part og. (just 900 issued), matched with a fine unused example overprinted SPECIMEN in black, large part og. Scarce Gi = £ 350++.
- 5187** 2 s. 6 d. olive-black, wmk. Crown CA, perf. 14, an unused example, well centred and of rich colour, trace of thin not affecting the appearance, large part og. A scarce stamp. Cert. BPA (2021) Gi = £ 350.
- 5188** 5 s. blue, wmk. Crown CA, perf. 14, an unused example, well centred and of fresh colour, superb, large part og. A very scarce stamp. Signed A. Diena. Cert. BPA (2021) Gi = £ 700.
- 5189** 5 s. blue, wmk. Crown CA, perf. 14, an unused Sperati Forgery in the characteristic Prussian Blue shade, partial gum and signed diagonally on reverse "Jean de Sperati". Scarce, a fine reference example.

27s+ 28s+
29s

*

150

(€ 150)

27+ 27s

*

150

(€ 150)

27

*

150

(€ 150)

28

*

300

(€ 305)

28 Forgery

*

100

(€ 100)



5190

Gibbons

Start price
in CHF

Start price
approx. €

- 5190** 10 s. purple-brown, wmk. Crown CA, perf. 14, an unused block of four of this famous stamp, of rich deep colour, fresh and very fine, superb large part og. A major rarity in a multiple and probably the finest now extant Gi = £ 6'400+.
Provenance: Collection L. du P. Chiappini.

29

田*

3'000 (€ 3'030)

1887/1902, Watermark Crown CA



5191

- 5191** 1886: De La Rue Appendix sheet for printing the Lagos 1887 issue in doubly fugitive inks with Duty Plates in different coloured singly fugitive inks, with ½ d. dull mauve (6) annotated for proposed values: with HALF PENNY in green (½ d.), in orange (1 d.), in blue (2 d.), in brown (3 d.), in black (4 d.), in red-brown (6 d.); and ½ d. dull green (4) annotated for proposed values: in pale green (1 s.), in red (2 s. 6 d.), in blue (5 s.) and in brown (10 s.); signed off as approved in red (although this turned out not to be the case). Reassembled from the original sheet dated August 28, 1886; illustrated in "The De La Rue Collection" edited by Frank Walton RDP on page 4514. Unique and splendid group.
Provenance: Collection L. du P. Chiappini
Collection David Springbett.

30 Proofs

(*)

1'500 (€ 1'515)



5192

Gibbons

Start price
in CHF

Start price
approx. €

- 5192** 1886/94: De La Rue Appendix sheet, showing at left the colour changes required and printing method in Doubly Fugitive inks for the 1887 issue with four stamps 4 d. pale violet, 6 d. olive-green, 1 s. orange and 2 s. 6 d. olive-black, first two endorsed "*D. fug. purple*" and the last two "*D. fug. Green*", right hand column of seven stamps showing the designs for the 1888/94 4 d. dull mauve & black (March 87), 5 d. dull mauve & green (Oct 93), 6 d. dull mauve & brownish mauve (March 87), 7½ d. dull mauve & carmine (Oct 93), 10 d. dull mauve & yellow (Oct 93), 1 s. yellow-green & black (March 87) and 2 s. 6 d. green & carmine (March 87) with the dates shown annotated alongside. Each stamp overprinted SPECIMEN in black - the 4 d. and 6 d. values showing the "Broken M" in SPECIMEN variety. Illustrated in "The De La Rue Collection" edited by Frank Walton RDP on page 4509. Exquisite and unique.

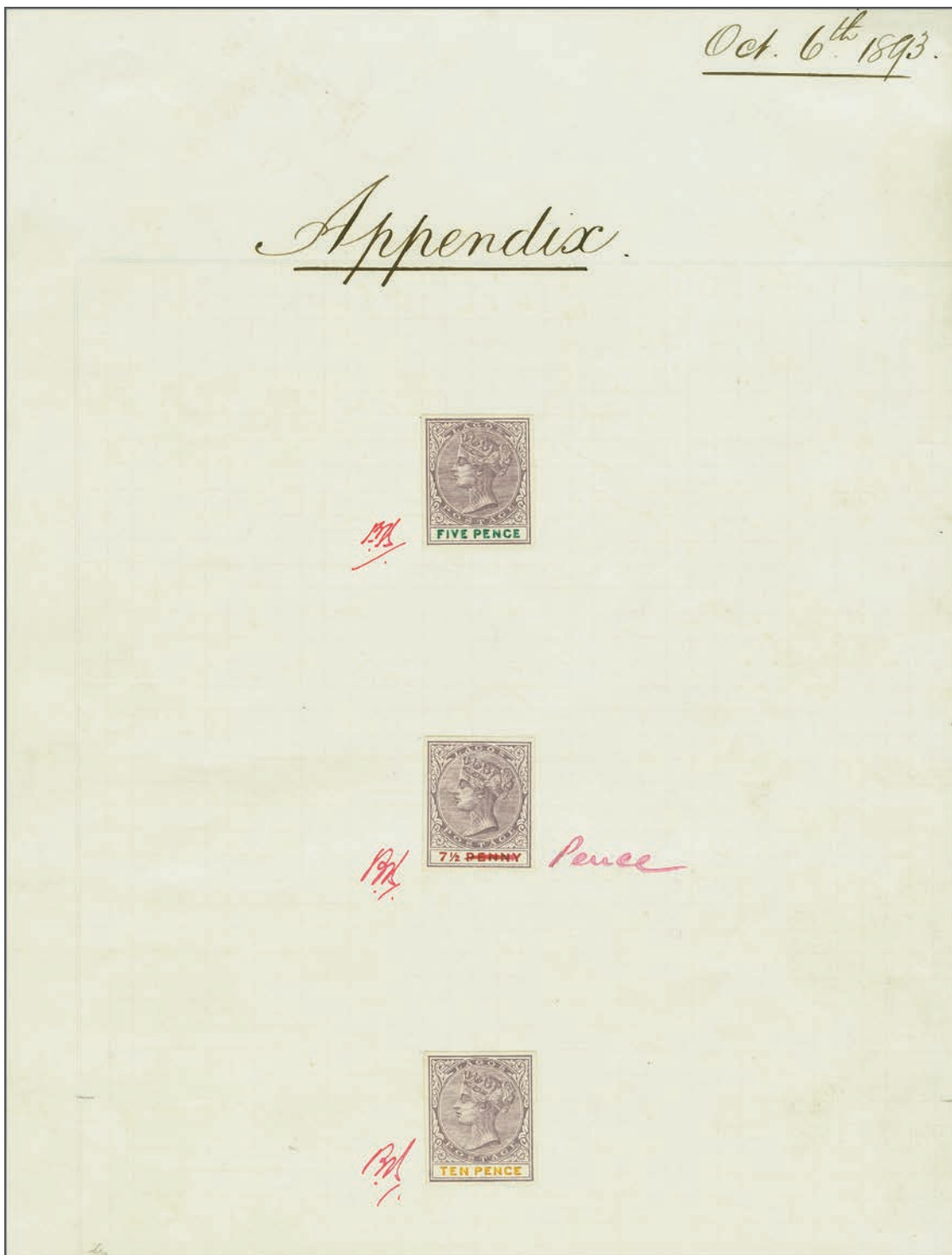
Provenance: Collection L. du P. Chiappini

Collection David Springbett, SG, London, 21 March 1997, lot 411.

30 Proofs

(*)

1'500 (€1'515)



5193

Gibbons

Start price
in CHF Start price
approx. €

- 5193** 1893: De La Rue Appendix sheet with proposals for the 1895 5 d., 7½ d. and 10 d. values, used Imperforate examples printed in dull mauve with blank Duty Plates, the 5 d. hand-painted in green, the 7½ d. hand-painted in carmine (wording to be changed from PENNY to PENCE and the 10 d. hand-painted in yellow; dated at top "Oct 6th 1893", the design and colours were accepted on October 17th. Illustrated in "The De La Rue Collection" edited by Frank Walton RDP on page 4516. Exquisite and unique.

34+ 36+ 37
Proof

(*)

1'000 (€ 1'010)



ex 5194



ex 5195



5197



5199

		Gibbons		Start price in CHF	Start price approx. €
5194	1887/1902: Definitive values (7) unused, wmk. Crown CA, perf. 14, with 2 d., 4 d., 6 d., 1 s., 2 s. 6 d., 5 s. and 10 s. all with diagonal "Specimen" in ink manuscript, a fine selection, large part og. Elusive and extremely rare. <i>Provenance: Harmers, London, 8 July 2003, lot 763 for four: 2 d. - 1 s. values.</i>	30s+ 33s+ 35s+ 38s+ 39s+ 40s+ 41s	*	850	(€ 860)
5195	1887/1902: Definitive set of twelve values unused to 10 s. green & brown, wmk. Crown CA, perf. 14, the basic set with three additional stamps: 2½ d. with larger letters, 6 d. with Duty Plate in carmine and 1 s. blue-green & black; fresh colours, generally fresh and fine, large part og. Gi = £ 250+.	30/41	*	100	(€ 100)
5196	1887/1902: Definitive set of twelve values unused, wmk. Crown CA, perf. 14, with the set to 2 s. 6 d. in singles with additional 2½ d. with large letters of value, 6 d. and 1 s. shades (Gi 31a, 35a, 38a) and the high values 5 s. green & blue and 10 s. green & brown in blocks of four - the 5 s. a Control block, fresh and fine, large part or unmounted og. (15 items) Gi = £ 700+.	30/41	田*	200	(€ 200)
5197	1887/92: 4 d. dull mauve & black unused, wmk. Crown CA, perf. 14, with diagonal "Specimen" in ink manuscript, fresh and fine, large part og. Rare.	33s spec	*	200	(€ 200)



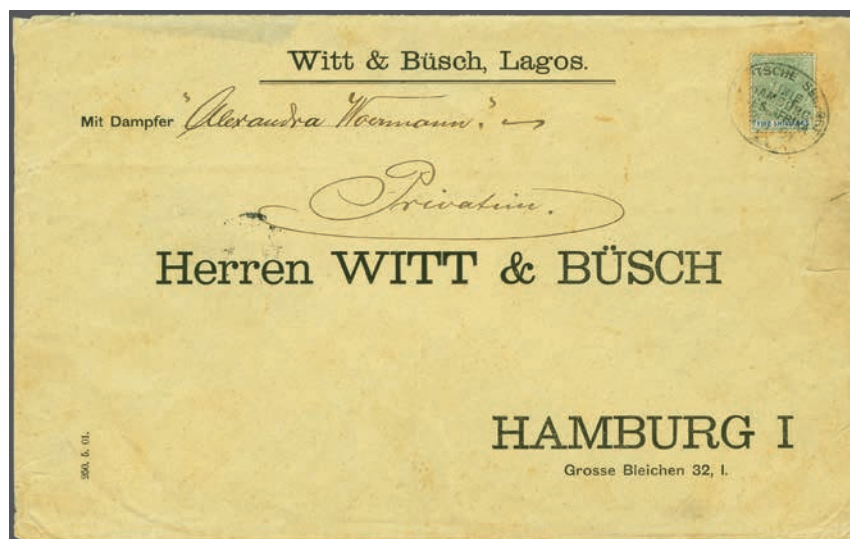
5198

- 5198** 1887/1902: 5 d. dull mauve & green, a fine used example, marginal from base of sheet showing Serial Number "1", cancelled by barred obliterator in black on 1898 registered cover to Liverpool "per S.S. Angola". Oval "R" in black and "Registered / Liverpool" at left (June 29) on obverse and "LAGOS / W. AFRICA" despatch cds (June 3) on reverse of a most attractive cover.
Provenance: Collection John Sacher, Spink, London, 12 Nov 2009, lot 309.
- 5199** 1886/87: De La Rue Colour Trial for the 1 s. value in issued colours of yellow-green & black, on gummed unwatermarked wove paper, line perf. 14, large part dried og. The describer believes this stamp was taken from the Appendix sheet as dated August 28, 1886, illustrated in "The De La Rue Collection" edited by Frank Walton RDP on page 4514. Rare and most unusual.
Provenance: Collection Colonel J.R. Danson, RL, London, 10 March 1971, ex lot 1535.

34 ✉ **200** (€ 200)38 Trial * **250** (€ 255)



SS 'Alexandra Woermann'



5200



5201

- 5200** 1884/86: 5 s. green and blue, wmk. Crown CA, perf. 14, used on 1901 cover to Hamburg endorsed "Mit Dampfer Alexandra Woermann", somewhat gum stained on application, tied by oval "DEUTSCHE SEEPOST / LINIE / HAMBURG / WESTAFRIKA / XX" in black, with Hamburg arrival (Feb 24) on reverse. Envelope with faults but an extraordinary commercial usage of this adhesive Gi = £ 160 off cover.
- 5201** 1893 (Aug 2): Provisional surcharge 1/2 d. on 4 d. dull mauve & black, an unused block of four with 16 mm. surcharge, upper stamps variety "Surcharge Double", fresh and very fine, unmounted og. Scarce thus Gi = £ 160+.
- 5202** 1893 (Aug 2): Provisional HALF PENNY on 4 d. dull mauve & black, small group with 16 mm. surcharge unused, further example on piece unused with "SPECIMEN." overprint in violet ex Natal P.O. archives, a used example and a "Double Surcharge" example used together with very scarce 16 1/2 mm. surcharge fine used. (Photo = [www](#))

Gibbons

Start price
in CHF

Start price
approx. €

40 **150** (€ 150)42a+ 42 **80** (€ 80)42+ 42a+ 42s+ 42 var * **120** (€ 120)

1904 and Later Issues



ex 5203

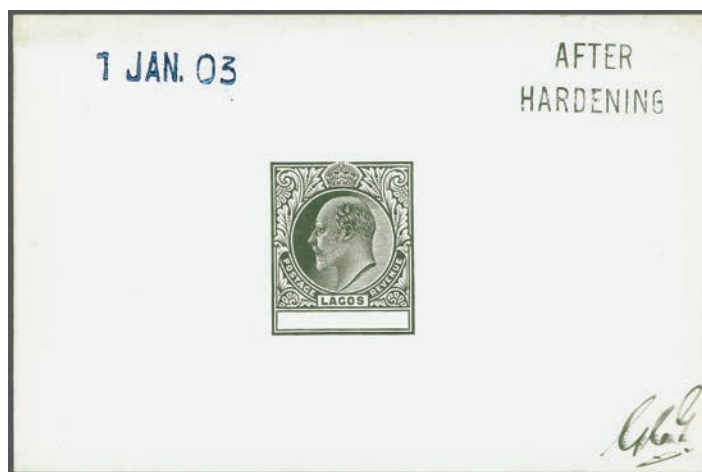


ex 5204

- 5203** 1904 (Jan-Nov): Edward VII set of ten values unused, wmk. Crown CA, overprinted SPECIMEN in black, fresh colours, fine large part og. Gi = £ 225. 44s/53s spec * **100** (€ 100)
- 5204** 1904 (Jan-Nov): Definitive set of ten values to 10 s. green & brown unused, wmk. Crown CA, with additional 2 1/2 d. with smaller lettering, 3 d. with tone spot on gum otherwise all fresh and fine, large part og. A rare set Gi = £ 650. 44/53 incl. 47b * **200** (€ 200)
- 5205** 1904 (Jan-Nov): Edward VII definitives, wmk. Crown CA, perf. 14, the unused selection with blocks of four of the 1/2 d., 1 d., 2 d., 2 1/2 d (both Duty Plate sizes), 3 d., 6 d. and 1 s. values; single 2 s. 6 d. and corner marginal example of the 5 s., and a corner Plate "1" marginal pair of the 5 s. value, fresh colours, large part og. An attractive group Gi = £ 975+. (Photo = [www](#)) 44/52 **250** (€ 255)



5206



5207

- 5206** 1902: De La Rue composite Essay for the Master Die Proof of the Edward VII issue, head-plate photographically reproduced in brown, the balance of the Essay entirely hand-painted and mounted in sunken card (65 x 81 mm.), with perforations, Crown and background and LAGOS in black, POSTAGE and REVENUE in Chinese white, with yellow wash applied over lower lettering and Duty Plate. Manuscript dated "MAY 13, 1902" at top right and signed off "Approved W.H.M." at base. The duplicate Essay is illustrated in "The De La Rue Collection" edited by Frank Walton RDP on page 4518. Minor crasing to the card but a unique and wonderful Essay.

- 5207** 1903: De La Rue Master Die Proof with blank Duty Plate, printed in black on glazed white card, handstamped "AFTER / HARDENING" in black and dated "1 JAN. 03" in blue. Signed "G.C.G." in ink at lower right. Slightest of soiling at top but rare.

*Provenance: Collection Col. J.R. Danson, RL, London, 10 March 1971, lot 1548
Collection L. Du P. Chiappini.*

Gibbons

Start price
in CHF Start price
approx. €

44 Proof (*) **1'200** (€1'210)

44 Proof (*) **350** (€355)



5208



5209



ex 5210



5211



5212

- 5208** 1903: De La Rue Imperforate Colour Trial of the 1 d. value in dull green & green, as selected for the 1904 ½ d. value, on watermarked Crown CA paper, large part og. Rare.

- 5209** 1903: De La Rue Colour Trial Imperforate with 1 d. Duty Plate, printed in proposed colours of the issued 2½ d. value in dull purple & blue on blue, fresh and very fine. Removed from the De La Rue Appendix sheet, illustrated in "The De La Rue Collection" edited by Frank Walton RDP on page 4518. Rare.

Provenance: Collection Colonel J.R. Danson, RL, London, 10 March 1971, ex lot 1551.

- 5210** 1904: 2½ d. dull purple & blue on blue, wmk. Crown CA, Smaller letters of value, unused and used examples, each with variety "Watermark Inverted", large part og., the used example with part 'Paquebot' cds (May 8, 1904) in black. Scarce Gi = £ 380.

- 5211** 1904 (Nov): 10 s. green & brown, wmk. Crown CA, an unused horizontal pair, of fresh colour, unmounted og. Scarce and fine. Cert. BPA (1969) Gi = £ 700+.

- 5212** 1904 (Nov): Edward VII definitive 10 s. green & brown, wmk. Crown CA, perf. 14, a fine used example cancelled by Lagos registered datestamp (Nov 26, 1904) in black. A very scarce stamp with just 720 examples sent Gi = £ 950.

45 Proof * **300** (€305)

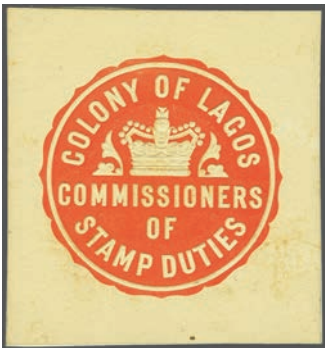
47 Proof (*) **350** (€355)

47bw * **120** (€120)

53 ** **250** (€255)

53 **300** (€305)

Fiscal Stamps



ex 5213



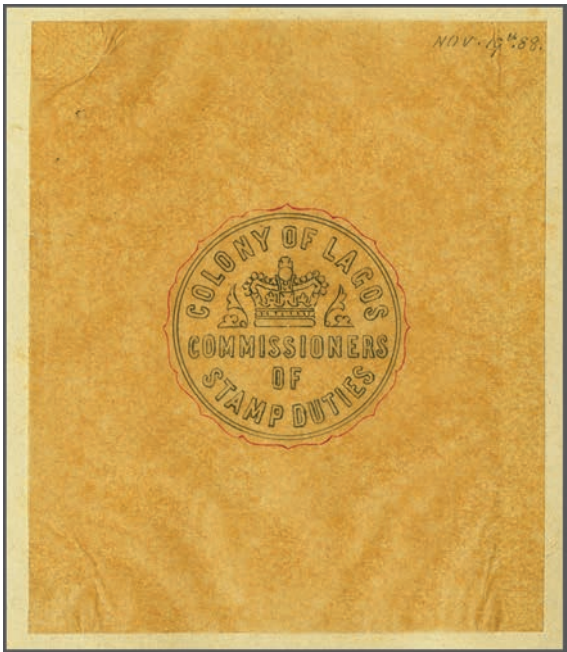
The Bank of British West Africa in Lagos

5213 **Revenues** 1888 (Nov): De La Rue Die Proofs (10) for proposed Stamp Duty Revenues, all embossed in orange vermillion with 1 d. and 6 d. values colourless, with additional "Commissioner of Stamp Duties" example and ten designs with differing outer frames for proposed values for 1 d., 6 d., 1 s., 2 s. 6 d., 5 s., 10 s., £1, £5, £10 and £20. Some minor age spots but a remarkable and unique assembly ex the DLR archives.

Gibbons

Start price in CHF Start price approx. €

(*) **400** (€ 405)



ex 5214

5214 **Revenues** 1888 (Nov): De La Rue Essays (11) all hand-drawn in black and red ink on thin brown tracing paper applied to cards (approx 65 x 77 mm.), for proposed Stamp Duty Revenues, all dated at top "Nov 19th '88", with "Commissioner of Stamp Duties" example and ten designs with differing outer frames for proposed values for 1 d., 6 d., 1 s., 2 s. 6 d., 5 s., 10 s., £1, £5, £10 and £20. Some creasing to one or two values but a remarkable and unique assembly ex the DLR archives.

Proofs

(*) **1'000** (€ 1'010)

Nigeria – Oil Rivers Protectorate

1892/99, Great Britain Used in the Oil Rivers Protectorate



Vice-Consulate on the Benue River



5215

Gibbons

Start price
in CHF

Start price
approx. €

5215 Jubilee 2½ d. purple on blue and 3 d. purple on yellow, used on 1894 registered cover (with additional 1 d. Late Fee) to Birmingham tied by bold strikes of "BENIN-RIVER" code C circular datestamps in red (Jan 1) with information strike above and large "R" for Registration. Oval framed 'Registered / Liverpool' datestamp of transit (Feb 9) in black and reverse with Birmingham arrival. Minor horizontal bend well away from the adhesives, a famous and magnificent cover *Gi* = £ 2'500 off cover.

Provenance: Collection Colonel J. R. Danson, RL, London, 10 March 1971, lot 1613
Collection John Sacher, Spink, London, 12 Nov 2009, lot 437.

Z8+ Z9



5'000 (€ 5'050)



5216



ex 5217

- 5216** Jubilee 2½ d. purple on blue and 6 d. purple on red, used on large piece of registered envelope each tied by fine strikes of "BONNY RIVER" code A circular datestamps (Sept 16, 1891) in black. Attractive and scarce Gi = £ 900+.
- 5217** Jubilee ½ d. vermilion and 1881 1 d. lilac used together with two strikes of "OLD CALABAR RIVER" code C circular datestamps (Sept 13, 1893) in black and Jubilee 2 d. green & vermilion pair cancelled "OLD CALABAR RIVER" code A circular datestamps (Nov 1893) in black. Scarce Gi = £ 1'775.

Gibbons			Start price in CHF	Start price approx. €
Z13+ Z15	△		200	(€ 200)
Z23+ Z24+ Z26			200	(€ 200)



A fishing village along the Opobo River



5218

- 5218** Jubilee 2½ d. purple on blue, single and horizontal strip of three used on 1892 Oil Rivers 2 d. blue registered postal stationery envelope (size H2) endorsed 'OHMS' and 'Opobo' in manuscript, addressed to the Chief Cashier at the Bank of England in London, all tied by "OPOBO RIVER" code C circular datestamps (Oct 15) in black. Liverpool transit (Nov 18) and London arrival (Nov 19) in red on obverse; the reverse with 'Inland Registration' blue label somewhat defaced by remains of a red wax seal. Some minor imperfections with two vertical slits (for string) at sides and minor opening fault on reverse, but a splendid and rare cover.
- Provenance: Collection John Sacher, Spink, London, 12 Nov 2009, lot 443.

Z31	✉	1'500	(€ 1'515)
-----	---	--------------	-----------


1892 (July), Great Britain Values Overprinted by De La Rue

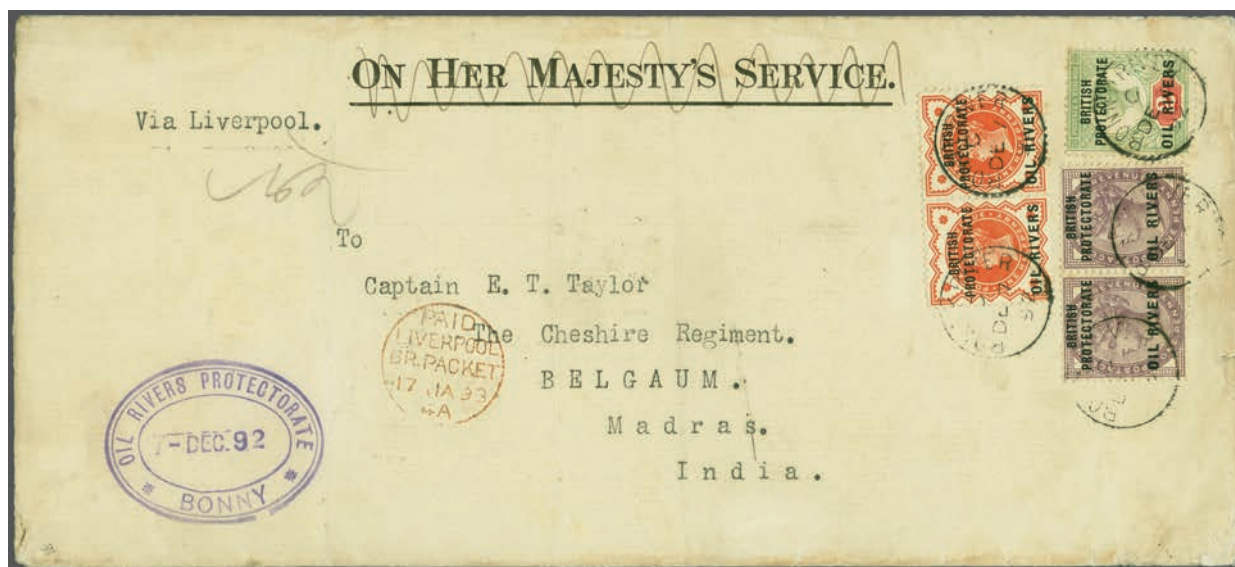


ex 5219



ex 5220

		Gibbons		Start price in CHF	Start price approx. €
5219	The complete set of six unused all handstamped "SPECIMEN" in black (GB Type 13), the 1 s. with slightly blunted perfs. at base otherwise fresh and fine, large part og. Scarce Gi = £ 300. <i>Provenance: Christies, London, 19 Nov 1986, lot 128.</i>				
		1s/6s spec	*	120	(€ 120)
5220	The complete set of six values in unused blocks of four (two are marginal), all handstamped "SPECIMEN" in black (GB Type 9), fresh and fine but for bend and tone spot on gum of 1 s., large part or unmounted og. A rare and most attractive set Gi = £ 1'200+. <i>Provenance: Christies, London, 19 Sept 1996, lot 126.</i>				
		1s/6s spec	田*/**	300	(€ 305)
5221	The set of six unused with large part og. but the 2 d. with gum showing some red ink, together with two further unused examples of the 2 d. grey-green & carmine: one showing "Broken first 'E' in PROTECTORATE" and the other with "Broken 'E' in RIVERS" part og. Scarce set Gi = £ 240+. <i>(Photo =  www)</i>				
		1/6+ 3 var	*	100	(€ 100)



5222

- 5222** Jubilee ½ d. vermilion in a horizontal pair, 1881 1 d. lilac in a horizontal pair and Jubilee 2 d. grey-green & carmine, all used on 1892 OHMS envelope (the inscription deleted in manuscript) to India, all tied by "BONNY RIVER" code C circular datestamps (Dec 7) in black. Fine oval "OIL RIVERS PROTECTORATE / BONNY" datestamp at left in violet and thence via Liverpool (Jan 17, 1893) to Madras, India. Reverse with 'Sea Post Office / A' datestamp (Feb 1) and Belgaum arrival cds. A delightful and spectacular usage.
Provenance: Collection John Sacher, Spink, London, 12 Nov 2009, lot 446.

1+ 2+ 3  **1'000** (€ 1'010)



Customs and Post Office in Old Calabar



5223

Gibbons

Start price in CHF Start price approx. €

- 5223** Jubilee ½ d. vermilion, 2½ d. purple on blue, September 1893 ½ d. in red on diagonally bisected 1 d. lilac and horizontal pair of 'HALF / PENNY' surcharge in green on 2½ d. purple on blue used on registered 1894 cover to Freetown, Sierra Leone all tied by "OLD CALABAR RIVER" code A circular datestamps in black (April 12). Large 'R' at upper left in black with Freetown arrival (April 29) also on obverse of a spectacular provisional usage. Slight file fold away from the adhesives, a most attractive correctly rated cover.
Provenance: Collection John Sacher, Spink, London, 12 Nov 2009, lot 491.

1+ 4+ 7+ 33

**1'500** (€1'515)

5224



5225

- 5224** Great Britain 1881, 1 d. lilac overprinted by De La Rue, a used horizontal strip of three, neatly cancelled by full strikes of scarce "BUGUMA" code A circular datestamps in black (Feb 6, 1894).
- 5225** Jubilee 2 d. grey-green & carmine and 1881 1 d. lilac overprinted by De La Rue, used on small piece with the 1 d. lilac diagonally bisected, tied by both "OLD CALABAR RIVER" cds (Aug 30, 1893) and the bisect also tied by 'Paid / Liverpool / Br. Packet' cds in red (Oct 2) in transit. Attractive and scarce piece.
Collection E. Ashton-Kinder, RL, London, 15 Feb 1978, lot 115.

2

75 (€75)

2b+ 3

**250** (€255)



5226



5227

5226 Jubilee 2 d. grey-green & carmine and 5 d. dull purple & blue, overprinted by De La Rue, used on 1893 registered cover to Plymouth tied by "OLD CALABAR RIVER" code A circular datestamps in black (Dec 11). Large 'R' in black at left and hooded 'Registered / London' transit (Jan 9, 1894) in red. Reverse with Plymouth arrival cds. A scarce and attractive usage.

5227 Jubilee 1 s. dull green, overprinted by De La Rue, used on 1895 registered cover to New York, USA tied by "OLD CALABAR RIVER" code B circular datestamp in black (May 6) with oval framed "REGISTERED / OLD CALABAR" datestamp below and large 'R' in black. Liverpool transit (June 14). Reverse with New York arrival (June 22) in violet. An attractive and scarce usage.

Provenance: Christies, London, 19 Nov 1996, lot 139.

Gibbons

Start price
in CHFStart price
approx. €

3+ 5

**200**

(€ 200)

6

**250**

(€ 255)

1893 (September), Issued at Old Calabar



5228



5229



Sir Claude MacDonald

5228 1/2+1/2 d. on Great Britain 1 d. lilac, surcharged in red, an unsevered pair, fresh and very fine unused, large part og. A very rare stamp: only 936 bisected examples were surcharged. Signed Herbert Bloch Gi = £ 500.

5229 1/2 d. on Great Britain 1 d. lilac diagonally bisected, a used example in combination with two unsevered pairs, all five stamps with surcharge in red, initially pre-cancelled and tied to 1894 cover to Horsham by "OLD CALABAR RIVER" code A datestamps (March 19) in black. Information strike at lower left above sender's signature of Sir Claude MacDonald, the Governor of the Protectorate. 'Paid / Liverpool / Br. Packet' in red (April 14) and reverse with Horsham arrival cds. Slightest of aging to envelope but a wonderful and rare franking. *Provenance: Harmers, London, 12-13 May 1981, lot 499.*

7a

**200**

(€ 200)

7a+ 7

**600**

(€ 605)

1893 (December), Issued at Old Calabar, Handstamped with Types 3–12



5230



5232



5233

Gibbons

Start price
in CHF

Start price
approx. €

- 5230** **Type 3** 'HALF / PENNY' in violet on Great Britain 2 d. grey-green & carmine, an unused example with handstamped surcharge, Gibbons Type 3 in violet, with characteristic defective 'F' in HALF, well centred and of fresh colour, fine large part og. Just 120 stamps issued, a rare stamp Gi = £ 550.

9

*

200 (€ 200)



Old Calabar Harbour



5231

- 5231** 'HALF / PENNY' in violet on Great Britain 2 d. grey-green & carmine, an unused horizontal strip of three with handstamped surcharge, Gibbons Type 3 in violet, two stamps with characteristic defective 'F' in HALF, first stamp variety "Surcharge Inverted", well centred and of fresh colour, fine large part og. Just 120 stamps issued of the normal, an exceedingly rare multiple in beautiful quality. Cert. RPSL (1933) Gi = £ 18'000+.

Provenance: Collection G.H. Boucher

Collection William Frazer, Spink, London, 23 March 2004, lot 589.

9c+ 9+ 9

*

3'500 (€ 3'535)

- 5232** **Type 4** 'HALF / PENNY' in green on Great Britain 2½ d. purple on blue, an unused example with Gibbons Type 4 handstamped surcharge in green, fresh colour and fine, large part og. Just 120 stamps issued, a scarce stamp. Signed A. Diena Gi = £ 300.

11

*

120 (€ 120)

- 5233** 'HALF / PENNY' in green on Great Britain 2½ d. purple on blue, a fine used example with Gibbons Type 4 handstamped surcharge in green, cancelled by central strike of "Bonny River" cds (Dec 31, 1893) in black, Just 120 stamps issued, a fine example of a scarce stamp Gi = £ 275.

Provenance: Harmers, London, 20 Dec 1994, lot 1470.

11

100 (€ 100)



5234



5235



5236



5237

- 5234** 'HALF / PENNY' in green on Great Britain 2½ d. purple on blue, an unused se-tenant vertical pair, marginal from right of sheet with Gibbons Type 4 handstamped surcharge in green, lower stamp surcharged Gibbons Type 9 in vermilion, of fresh rich colour and merest trace of speckles from red blotting paper utilised to store the stamps on large part og. Manuscript description in ink on margin but a most attractive and extremely rare multiple. Cert. RPSL (1930) Gi = £ 950++.
- Provenance: Collection George H. Boucher (1930)*
Collection A.J.P. Baumann, Harmers, London, 22 Sept 1977, lot 281.
- 5235** 'HALF / PENNY' in vermilion on Great Britain 2½ d. purple on blue, an unused example with Gibbons Type 4 handstamped surcharge in vermilion, fresh colour and appearance, large part og. Just 114 stamps issued, a very scarce stamp. Signed A. Diena. Cert. BPA (2021) Gi = £ 1'200.
- 5236** 'HALF / PENNY' in carmine on Great Britain 2½ d. purple on blue, a used example with Gibbons Type 4 handstamped surcharge in carmine, tied to small piece by "Old Calabar River" cds (March 16, 1894) in black. Just 120 stamps issued, a scarce stamp Gi = £ 475.
- Provenance: Harmers, London, 20 Dec 1994, lot 1460.*
- 5237** 'HALF / PENNY' in blue on Great Britain 2½ d. purple on blue, an unused example with Gibbons Type 4 handstamped surcharge in blue, fresh and very fine, large part og. A scarce stamp with just 120 issued. Signed A. Diena Gi = £ 450.

Gibbons		Start price in CHF	Start price approx. €
11+ 31	*	750	(€ 760)
12	*	400	(€ 405)
13	△	150	(€ 150)
14	*	150	(€ 150)



5238



Renato Mondolfo

- 5238** 'HALF / PENNY' in black on Great Britain 2½ d. purple on blue, an unused example with Gibbons Type 4 handstamped surcharge in black being the central stamp in a horizontal strip of three flanked by two examples with Gibbons Type 4 surcharge in blue, all three stamps showing the horizontal line below surcharge almost entirely omitted, fresh and exceptionally fine for this, typical speckles from the red blotting paper utilised to store the stamps on large part og. An astonishingly rare multiple, just 19 examples believed to exist with the surcharge in black and in a se-tenant multiple probably unique. Cert. BPA (1973) Gi = £ 5'000++.
- Provenance: Collection Renato Mondolfo RDP.*

14+ 15+ 14	*	3'000	(€ 3'030)
------------	---	-------	-----------



5239

5240

Gibbons

Start price
in CHFStart price
approx. €

- 5239** 'HALF / PENNY' in black on Great Britain 2½ d. purple on blue, an unused example with Gibbons Type 4 handstamped surcharge in black in a horizontal pair with right hand stamp with surcharge in carmine, of wonderful fresh appearance, typical speckles from the red blotting paper utilised to store the stamps on large part og. Just 19 stamps were printed with the black surcharge and thus a se-tenant pair of consummate quality and rarity. Signed A. Diena. Certs. Brandon (1994), BPA (2021) Gi = £ 4'700++.

Provenance: Spink, London, 6-7 Dec 2006, lot 1303.

15+ 13

*

2'500 (€2'525)

- 5240** 'HALF / PENNY' in black on Great Britain 2½ d. purple on blue, an unused example with Gibbons Type 4 handstamped surcharge in black, in horizontal pair with second stamp surcharged in blue, of fresh colour with some manuscript notations on large part og. Vertical fold along perfs. mentioned for full accuracy but an exceptional and rare se-tenant pair with just 19 stamps printed surcharged in black. Cert. BPA (2022) Gi = £ 4'700+.

Provenance: Collection E. Ashton-Kinder, RL, London, 15 Feb 1978, lot 125.

15+ 14

*

2'500 (€2'525)

5241



5242



5243

- 5241** **Type 5** 'HALF / PENNY' in vermilion on Great Britain 2½ d. purple on blue, a used example with Gibbons Type 5 handstamped surcharge in vermilion, cancelled by "Forcados River" circular datestamp (Jan 3, 1894) in black. A scarce stamp. Cert. BPA (1955) Gi = £ 225.

17

100 (€ 100)

- 5242** 'HALF / PENNY' in vermilion on Great Britain 2½ d. purple on blue, a used horizontal pair with Gibbons Type 5 handstamped surcharge in vermilion, cancelled by "Forcados River" circular datestamps (Jan 3, 1894) in black. A choice and very scarce multiple Gi = £ 450+.

17

175 (€ 175)

- 5243** 'HALF / PENNY' in vermilion on Great Britain 2½ d. purple on blue, a used example with Gibbons Type 5 handstamped surcharge in vermilion, variety "Surcharge Double", cancelled by large part "Forcados River" datestamp in black. Extremely rare. Cert. BPA (1967) Gi = £ 2'250.

17a

600 (€ 605)

5244



5245

- 5244** **Type 6** 'HALF / PENNY' in violet on Great Britain 2 d. grey-green & carmine, a used example with Gibbons Type 6 handstamped surcharge in violet, lightly cancelled by circular datestamp in black. Some speckles from the red blotting paper utilised to store the stamps on reverse. A scarce stamp with just 120 issued Gi = £ 500.

Provenance: Harmers, London, 20 Dec 1994, ex lot 1470.

18

175 (€ 175)

- 5245** 'HALF / PENNY' in violet on Great Britain 2 d. grey-green & carmine, a used example with Gibbons Type 6 handstamped surcharge in violet and showing "Raised 'Y' in PENNY", marginal from base of sheet, cancelled by complete strike of "Old Calabar River" circular datestamp (21 March, 1894) struck in black. Just 120 stamps issued, scarce. Cert. Brandon (1986) Gi = £ 500.

18

200 (€ 200)



5246

Gibbons
Start price in CHF Start price approx. €

5246 'HALF / PENNY' in vermilion on Great Britain 2½ d. purple on blue, an unused horizontal pair with Gibbons Type 6 handstamped surcharge in vermilion, second stamp with variety "Surcharge Diagonal Inverted Reading Up", of lovely rich colour, fresh and very fine, large part og. A wonderful pair of great rarity. Signed Stanley Gibbons. Cert. RPSL (1931) Gi = £ 8'000++.
Provenance: Collection Alfred W. Bates (1931).

19+ 19f * 3'000 (€ 3'030)



5247



Renato Mondolfo

5247 'HALF / PENNY' in vermilion on Great Britain 2½ d. purple on blue, an unused se-tenant block of twelve (3 x 4), with italic Gibbons Type 7 handstamped surcharge in vermilion on eight stamps (positions 1, 2, 4-6, 10-12 on the multiple), third stamp with Gibbons Type 6 handstamped surcharge in vermilion each with variety "Surcharge Diagonal Inverted, Reading Up", seventh stamp with variety "Surcharge Diagonal Inverted, Reading Down" and position 8 with variety "Surcharge Diagonal, Reading Down" and position 9 with "Surcharge Diagonal, Reading Up", fresh colour and very fine, typical speckles from red blotting paper utilised to store the stamps on large part or unmounted og. Probably the largest multiple extant of any of the December 1893 provisionals and a great rarity of the issue. Magnificent. Cert. BPA (1973) Gi = £ 27'200++.
Provenance: Collection Renato Mondolfo RDP.

19c+ 19f+
21 田*/** 10'000 (€ 10'100)



5248

Gibbons

Start price
in CHF Start price
approx. €

- 5248** 'HALF / PENNY' in vermilion on Great Britain 2½ d. purple on blue, an unused horizontal pair with Gibbons Type 6 handstamped surcharge in vermilion, first stamp with variety "Surcharge Diagonal Reading Down", second stamp with Gibbons Type 7 'Half / Penny' handstamped surcharge in vermilion, fresh and very fine, large part og. Extremely rare. Cert. BPA (1958) Gi = £ 5'000++.

Provenance: Collection William Frazer, Spink, London, 25 March 2004, lot 600.

19c+ 21

*

1'500 (€ 1'515)

A view of Old Calabar



5249

- 5249** 'HALF / PENNY' in vermilion on Great Britain 2½ d. purple on blue, an unused se-tenant horizontal pair, marginal from right of sheet, with Gibbons Type 6 handstamped surcharge in vermilion on first stamp with variety "Surcharge Vertical Reading Up", right hand stamp with Gibbons Type 7 handstamped surcharge 'Half / Penny' in vermilion, fresh and very fine, superb large part og. An exceptionally rare multiple in the foremost quality Gi = £ 13'400++.

Provenance: Collection Colonel E.H.R. Green, Harmer Rooke, New York, 13-18 Nov 1944, lot 1090.

19c+ 21

*

5'000 (€ 5'050)

5250



5251

- 5250** Type 7 'Half / Penny' in violet on Great Britain 2 d. grey-green & carmine, a used example with Gibbons Type 7 handstamped surcharge in violet, of good colour, cancelled by "Old Calabar River" circular datestamp (March 22, 1894) in black. Just 120 stamps issued Gi = £ 275.
- 5251** 'Half / Penny' in violet on Great Britain 2 d. grey-green & carmine, a used example with Gibbons Type 7 handstamped surcharge in violet, on small piece with July 1892 2 d. grey-green & carmine, each cancelled by "Old Calabar" squared circle datestamps (Nov 28, 1894) in black. Unusual and scarce. Signed Heinrich Köhler Gi = £ 275+.

20

100 (€ 100)

20+ 3

△

120 (€ 120)



- | | | Gibbons | Start price
in CHF | Start price
approx. € |
|-------------|---|-----------|-----------------------|--------------------------|
| 5252 | 'HALF / PENNY' in violet on Great Britain 2 d. grey-green & carmine, an unused horizontal pair with first stamp showing Gibbons Type 7 handstamped surcharge in violet and second stamp surcharged Gibbons Type 3 in violet, variety "Surcharge Vertical Reading Up", large part og. with typical speckles from red blotting paper utilised to store the adhesives. One short perf. on right hand stamp (not mentioned on certificate) but an immensely rare set-tenant pair. Certs. Brandon (1987), RPSL (2021) Gi = £ 9'500+. | 20+ 9c * | 2'000 | (€ 2'020) |
| 5253 | 'Half / Penny' in violet on Great Britain 2 d. grey-green & carmine, a used vertical pair with Gibbons Type 7 handstamped surcharge in violet, of fine fresh colour, lower stamp variety "Surcharge Double", lightly cancelled by "Old Calabar River" circular datestamps (probably March 21, 1894) in black leaving the variety clear. Just 120 stamps printed, the only other pair extant being the horizontal pair ex the Colonel Danson collection (lot 1696) which probably adjoined this (see photo with lot). An exceptional and extremely rare pair in the foremost quality. Cert. BPA (2003) Gi = £ 6'750++. | 20+ 20a | 2'000 | (€ 2'020) |
| 5254 | 'Half / Penny' in violet on Great Britain 2 d. grey-green & carmine, an unused horizontal pair with Gibbons Type 7 handstamped surcharge in violet, first stamp showing variety "Surcharge Vertical Reading Down", both with lower bars omitted, typical speckles from red blotting paper utilised to store the stamps on large part og. Just 120 stamps printed, a wonderful and extremely rare multiple. Cert. BPA (1985) Gi = £ 8'000++.
<i>Provenance: Collection Rossi, Warwick & Warwick, Coventry, 8 June 2005, lot 426.</i> | 20b+ 20 * | 3'500 | (€ 3'535) |



- | | | | | |
|-------------|---|------|------------|---------|
| 5255 | 'Half / Penny' in vermilion on Great Britain 2½ d. purple on blue, an unused example with Gibbons Type 7 handstamped surcharge in vermilion, fresh and fine, typical speckles from red blotting paper utilised to store the stamps on large part og. Just 180 stamps issued. Signed Brun, A. Diena Gi = £ 400. | 21 * | 150 | (€ 150) |
| 5256 | 'Half / Penny' in vermilion on Great Britain 2½ d. purple on blue, a used example with Gibbons Type 7 handstamped surcharge in vermilion, cancelled by "Forcados River" circular datestamp (partial Jan 3, 1894) with Code C reversed in black. Fine and scarce, just 180 stamps issued. Cert. BPA (1980) Gi = £ 200. | 21 | 100 | (€ 100) |
| 5257 | 'Half / Penny' in vermilion on Great Britain 2½ d. purple on blue, a used horizontal pair with Gibbons Type 7 handstamped surcharge in vermilion, cancelled by complete "Old Calabar River" circular datestamp (Feb 17, 1894) in black. Fine and scarce multiple with just 180 stamps issued Gi = £ 400. | 21 | 200 | (€ 200) |



5258



Louise Boyd Dale



5259



Alfred F. Lichtenstein



5260

		Gibbons		Start price in CHF	Start price approx. €
5258	'Half / Penny' in vermillion on Great Britain 2½ d. purple on blue, an unused horizontal se-tenant pair, with upper stamp Gibbons Type 7 handstamped surcharge in vermillion and lower stamp with Gibbons Type 6 handstamped surcharge in vermillion, fresh and very fine with merest trace of speckles from red blotting paper utilised to store the stamps on large part og. An extremely rare and attractive multiple Gi = £ 1'000++. <i>Provenance: Harmers, London, 28 Aug 1997, lot 1235.</i>	21+ 19	*	750	(€ 760)
5259	'Half / Penny' in vermillion on Great Britain 2½ d. purple on blue, an unused vertical se-tenant pair, with upper stamp Gibbons Type 7 handstamped surcharge in vermillion, variety "Surcharge Vertical Reading Up", lower stamp with Gibbons Type 6 handstamped surcharge in vermillion, fresh and very fine with merest trace of speckles from red blotting paper utilised to store the stamps on large part og. Wonderful and of great rarity. Cert. BPA (2021) Gi = £ 8'650++. <i>Provenance: Collection Preston Collection Dale-Lichtenstein, Harmers, New York, 14 March 1991, lot 184.</i>	21b+ 19	*	2'500	(€ 2'525)
5260	'Half / Penny' in violet on Great Britain 2½ d. purple on blue, an unused example with Gibbons Type 7 handstamped surcharge in violet, minor bend of no significance, fresh and very fine with merest trace of speckles from red blotting paper utilised to store the stamps on large part og. A very rare stamp with <i>just 9 examples printed</i> , in the foremost quality. Cert. BPA (2022) Gi = £ 13'000. <i>Provenance: Collection E. Ashton-Kinder, RL, London, 15 Feb 1978, lot 139.</i>	24	*	5'000	(€ 5'050)



5261



5262

5261	Type 8 'Half / Penny' in vermillion on Great Britain 2½ d. purple on blue, an unused example with Gibbons Type 8 handstamped surcharge in vermillion, fresh and very fine with merest trace of speckles from red blotting paper utilised to store the stamps on part og. and tiny corner perf. imperfection at lower right; nevertheless a very rare stamp Gi = £ 550. <i>Provenance: Collection William Frazer, Spink, London, 25 March 2004, lot 605.</i>	25	*	200	(€ 200)
5262	'Half / Penny' in green on Great Britain 2½ d. purple on blue, an unused example with Gibbons Type 8 handstamped surcharge in green, centred to right otherwise fresh and very fine with large part og. A very scarce stamp. Signed A. Diena Gi = £ 550.	27	*	175	(€ 175)



5263



5264



5265



5266

Gibbons

Start price
in CHFStart price
approx. €

- 5263** Type 9 'HALF / PENNY' in violet on Great Britain 2 d. grey-green & carmine, a used example with Gibbons Type 9 handstamped surcharge in violet, cancelled by "Old Calabar River" circular datestamp (July 19, 1895) in black. A fine example of a scarce stamp with just 120 stamps issued Gi = £ 400.

Provenance: Harmers, London, 20 Dec 1994, lot 1464.

29

150

(€ 150)

- 5264** 'HALF / PENNY.' in violet on Great Britain 2 d. grey-green & carmine, an unused horizontal pair with left hand stamp Gibbons Type 9 handstamped surcharge in violet, second stamp with 'Half / Penny' handstamped surcharge (Gibbons Type 7) in violet, typical speckles from red blotting paper utilised to store the stamps on large part og. Just 120 stamps issued, a wonderful and extremely rare multiple. Signed A. Diena. Cert. BPA (1964) Gi = £ 1'000++.

Provenance: Harmers, London, 28 Aug 1997, lot 1236.

29+ 20

*

600

(€ 605)

- 5265** 'HALF / PENNY' in blue on Great Britain 2 d. grey-green & carmine, an unused example with Gibbons Type 9 handstamped surcharge in blue, centred to lower left with typical speckles from red blotting paper utilised to store the stamps on large part og. Just 60 stamps issued. A fine example of this very scarce stamp. Cert. BPA (2021) Gi = £ 2'000.

Provenance: Collection E. Ashton-Kinder, RL, London, 15 Feb 1978, lot 145.

30

*

500

(€ 505)

- 5266** 'HALF / PENNY' in blue on Great Britain 2 d. grey-green & carmine, a used example with Gibbons Type 9 handstamped surcharge in blue, cancelled by "Old Calabar River" circular datestamp (April 22, 1894) in black. Just 60 stamps issued. A fine example of this very scarce stamp Gi = £ 800.

Provenance: Harmers, London, 20 Dec 1994, lot 1465.

30

250

(€ 255)



5267



5268



5269

- 5267** 'HALF / PENNY' in vermilion on Great Britain 2½ d. purple on blue, an unused horizontal pair, first stamp with Gibbons Type 9 handstamped surcharge in vermilion and right hand stamp with Type 9 surcharge in green, slightest trace of age on superb large part og. Just 60 stamps issued with the vermilion surcharge. An attractive and very rare multiple. Cert. RPSL (1960) Gi = £ 1'100++.

Provenance: Harmers, London, 28 Aug 1997, lot 1243.

31+ 33

*

600

(€ 605)

- 5268** 'HALF / PENNY' in blue on Great Britain 2½ d. purple on blue, an unused example with Gibbons Type 9 handstamped surcharge in blue, centred to right but of good colour and merest trace of speckles from red blotting paper utilised to store the stamps on large part og. Just 120 stamps issued, a scarce stamp. Signed A. Diena Gi = £ 425.

32

*

175

(€ 175)

- 5269** 'HALF / PENNY' in blue on Great Britain 2½ d. purple on blue, an unused se-tenant horizontal pair with first stamp with Gibbons Type 9 handstamped surcharge in blue and right hand stamp surcharged Type 8 in vermilion, fresh colour and very fine with merest trace of speckles from red blotting paper utilised to store the stamps on large part og. Just 120 stamps issued with surcharge in blue. A splendid and rare pair. Ex Tommy Allen. Cert. BPA (1931) Gi = £ 975++.

Provenance: Collection Alfred W. Bates (1931).

32+ 25

*

500

(€ 505)



5270

Gibbons

Start price
in CHF

Start price
approx. €

- 5270** 'HALF / PENNY' in blue on Great Britain 2½ d. purple on blue, an unused se-tenant horizontal strip of three, with first and third stamps Gibbons Type 9 handstamped surcharge in blue and central stamp surcharged Type 8 in vermillion, fresh vibrant colour and very fine, with merest trace of speckles from red blotting paper utilised to store the stamps on large part og. Just 120 stamps issued with the surcharge struck in blue. A magnificent and extremely rare multiple. Cert. RPSL (1968) Gi = £ 1'400++.
- Provenance: Bridger & Kay, London, 25-26 April 1979, lot 1484.*

32+ 25+ 32

*

1'000 (€ 1'010)



5271



5272

- 5271** 'HALF / PENNY' in green on Great Britain 2½ d. purple on blue, an unused example with Gibbons Type 9 handstamped surcharge in green, centred to right but of fine fresh colour and merest trace of speckles from red blotting paper utilised to store the stamps on most part og. Scarce, just 120 stamps issued. Signed A. Diena and T.H. Lemaire Gi = £ 450.
- 5272** 'HALF / PENNY' in green on Great Britain 2½ d. purple on blue, a used example with Gibbons Type 9 handstamped surcharge in green, neatly cancelled by "Bonny River" circular datestamp (May 1894) in black. Scarce, just 120 stamps issued Gi = £ 500.
- Provenance: Harmers, London, 20 Dec 1994, lot 1468.*

33

*

120 (€ 120)

33

180 (€ 180)



5273

- 5273** 'HALF / PENNY' in green on Great Britain 2½ d. purple on blue, an unused se-tenant horizontal strip of three, with first and third stamps Gibbons Type 9 handstamped surcharge in green and central stamp surcharged Type 9 in vermillion, of fresh vibrant colour and extremely fine, with merest trace of speckles from red blotting paper utilised to store the stamps on large part og. Just 120 stamps of the green and 60 stamps of the vermillion surcharge issued. Exceptional and very rare multiple. Cert. RPSL (1995) Gi = £ 1'550++.
- Provenance: Collection Colonel J.R. Danson, RL, London, 10 March 1971, lot 1714*
Collection David Springbett
Collection Howard & Torie Gibraltar, Shreves, New York, 14-15 Sept 2000, lot 1906.

33+ 31+ 33

*

1'000 (€ 1'010)



Filling Palm Oil Barrels



5274

Gibbons

Start price	Start price
in CHF	approx. €

- 5274** 'HALF / PENNY' in violet on Great Britain 2½ d. purple on blue, an unused horizontal se-tenant pair with first stamp Gibbons Type 9 handstamped surcharge in violet (9 printed), second stamp with italic Gibbons Type 7 handstamped surcharge in violet (22 examples printed), fresh and very fine, superb large part og. Believed unique. Signed Tommy Allen, Peter Holcombe, William H. Peckitt. Cert. Holcombe (1985) Gi = £ 19'000++.

Provenance: Harmers, London, 28 Jan 1998, lot 1578.

34+ 24

*

7'500 (€ 7'575)

5275



5276



5277

- 5275** **Type 10** 'HALF / PENNY' in green on Great Britain 2½ d. purple on blue, an unused example, marginal from top of sheet with Gibbons Type 10 handstamped surcharge in green, a fine used example tied to small piece by complete strike of "Old Calabar River" circular datestamp (April 20, 1894) in black. Scarce with just 120 stamps issued. Signed Turpin / London Gi = £ 450.

35

△

150 (€ 150)

- 5276** **Type 11** 'One / Shilling' in violet on Great Britain 2 d. grey-green & carmine, an unused example with Gibbons Type 11 handstamped surcharge Type A from the Trial Sheet, fresh and very fine, superb large part og. Scarce, with just 120 stamps issued Gi = £ 475.

Provenance: Collection William Frazer, Spink, London, 25 March 2004, lot 616.

37

*

350 (€ 355)

- 5277** 'One / Shilling' in violet on Great Britain 2 d. grey-green & carmine, a used example with Gibbons Type 11 handstamped surcharge Type A, marginal from top of sheet tied to small piece by complete strike of "Old Calabar River" circular datestamp (April 11, 1895) in black. Extremely rare - just two used examples are recorded from the Trail Sheet (reference John Sacher page 37). A rarity of the issue Gi = £ 400+.

Provenance: Collection Colonel J.S. Danson, RL, 10 March 1971, lot 1722.

37

△

400 (€ 405)



5278



5279

Gibbons

Start price
in CHF Start price
approx. €

- 5278** 'One / Shilling' in violet on Great Britain 2 d. grey-green & carmine, an unused horizontal pair with Gibbons Type 11 handstamped surcharge Type A, the first stamp with variety "Surcharge Diagonal Reading Up" and the right hand stamp with variety "Surcharge Vertical Reading Down", of fresh colour and very fine, superb large part og. Exceedingly rare multiple for the connoisseur. Cert. BPA (1956) Gi = £ 16'000+.

Provenance: Collection E. Ashton-Kinder, RL, London, 15 Feb 1978, lot 155.

37c+ 37b * **5'000** (€ 5'050)

- 5279** 'One / Shilling' in violet on Great Britain 2 d. grey-green & carmine, an unused horizontal pair with Gibbons Type 11 handstamped surcharge Type A from the Trial Sheet, first stamp with variety "Surcharge Diagonal Reading Up" and the right hand stamp with variety "Surcharge Diagonal Inverted Reading Down", centred to left, of fresh colour and fine, large part og. A wonderful multiple and a great rarity of the issue. Cert. RPSL (1932) Gi = £ 21'000+.

Provenance: Collection George H. Boucher (1932)

Collection E. Ashton-Kinder, RL, London, 15 Feb 1978, lot 156.

37c+ 37d * **5'000** (€ 5'050)



5280



5281

- 5280** 'One / Shilling' in violet on Great Britain 2 d. grey-green & carmine, an unused horizontal se-tenant strip of three marginal from right of sheet with Gibbons Type 11 handstamped surcharge Type A from the Trial Sheet, first and third stamps surcharged in violet and central stamp surcharged in vermillion with variety "Surcharge Diagonal Reading Down", fresh vibrant colour and superb large part og. A magnificent and rare multiple (just one other strip known, ex Danson lot 1728) in wonderful quality. Cert. BPA (1956) Gi = £ 10'000++.

37+ 38b+ 37 * **5'000** (€ 5'050)

- 5281** 'One / Shilling' in vermillion on Great Britain 2 d. grey-green & carmine, an unused vertical pair with Gibbons Type 11 handstamped surcharge Type A, from the Trial Sheet, upper stamp surcharged in vermillion, lower stamp surcharged in violet; fresh and extremely fine, superb large part og. A magnificent multiple in the foremost quality. Cert. BPA (1973) Gi = £ 1'275++.

Provenance: Collection Renato Mondolfo RDP.

38+ 37 * **1'000** (€ 1'010)



Processing the Palm Oils



5282

Gibbons

Start price in CHF Start price approx. €

5282 'One / Shilling' in vermillion on Great Britain 2 d. grey-green & carmine, an unused example with Gibbons Type 11 handstamped surcharge Type A, from the Trial Sheet, variety "Surcharge Inverted", one slight blunted perf. at left with minor corner crease unapparent on face, of fresh colour and fine large part og. An exceptionally rare stamp. Cert. BPA (1991) Gi = £ 18'000.
Provenance: Collection Dale-Lichtensten, Harmers, New York, 214 March 1991, lot 191
Harmers, London, 23 March 1994, lot 1626.

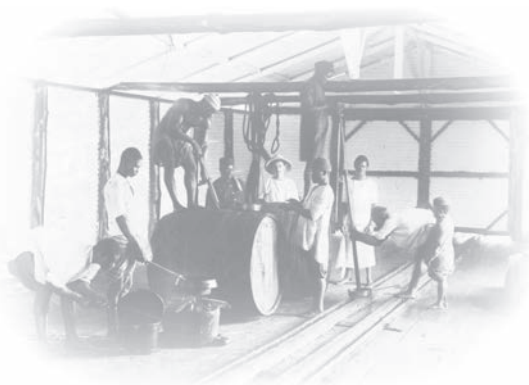
38a * 5'000 (€ 5'050)



5283

5283 'One / Shilling' in black on Great Britain 2 d. grey-green & carmine, an unused example with Gibbons Type 11 handstamped surcharge Type B, fresh colour and very fine appearance with surcharge strongly applied, top perfs. with slight traces of the red blotting paper used for storing the stamps, large part og. An immensely rare stamp. Signed A. Diena, Houtzamer. Cert. BPA (1986) Gi = £ 6'000.

39 * 2'500 (€ 2'525)



Palm Oil Factory



5284

Gibbons

Start price
in CHF Start price
approx. €

- 5284** 'One / Shilling' in black on Great Britain 2 d. grey-green & carmine, an unused example with Gibbons Type 11 handstamped surcharge Type A, variety "Surcharge Diagonal Reading Up", fresh colour, slightest of aging on gum at top of stamp not affecting the very fine appearance and mentioned for full accuracy (not on certificate), large part og. A major rarity of British Colonial philately. Cert. BPA (1991) Gi = £ 15'000.
*Provenance: Collection Colonel E.H.R. Green, Harmer Rooke, New York, 13-18 Nov 1944, lot 1098
 Collection Dale-Lichtenstein, Harmers, New York, 14 March 1991, lot 193
 Christies, London, 19 Nov 1996, lot 202.*

39c

*

7'500 (€ 7'575)

5285

- 5285** **Type 12** '5/-' in violet on Great Britain 2 d. grey-green & carmine, an unused example with Gibbons Type 12 handstamped surcharge, variety "Surcharge Vertical Reading Down", of fine colour and appearance, large part og. An immensely rare stamp with *just 4 stamps recorded*, one housed in the collection of His Majesty King Charles III. One of the most elusive of all British Colonial stamps. Cert. BPA (1954) Gi = £ 45'000.
*Provenance: Collection Colonel J.R. Danson, RL, London, 10 March 1971, lot 1746
 Collection Rossi, Warwick & Warwick, Coventry, 8 June 2005, lot 477.*

40b

*

20'000 (€ 20'200)



5286



Selling the Palm Oil

Gibbons

Start price
in CHF Start price
approx. €

- 5286** '5/-' in violet on Great Britain 2 d. grey-green & carmine, an unused example with Gibbons Type 12 handstamped surcharge in violet, variety "Surcharge Diagonal Reading Down", of fine colour and appearance, horizontal crease not affecting the frontal appearance, tiny piece of paper hinge remnant and speckles from red blotting paper on large part og. An extremely rare stamp with very few examples recorded. Cert. BPA (2022) Gi = £ 40'000.
Provenance: Collection E. Ashton-Kinder, RL, London, 15 Feb 1978, lot 160.

40c * **15'000** (€ 15'150)



5287



Philippe von Ferrary

- 5287** '10/-' in vermillion on Great Britain 5 d. dull purple & blue, an unused horizontal pair with Gibbons Type 12 handstamped surcharge, first stamp with variety "Surcharge Vertical Reading Up" and the right hand stamp normal, of fresh colour but right hand perforations somewhat blunted, typical speckles from red blotting paper utilised to store the stamps on part og. Despite the minor imperfection an enormously rare multiple (just 32 stamps were issued) with the only other pair being ex Dale-Lichtenstein with the overprint variety reading down. A great rarity. Cert. BPA (1964) Gi = £ 51'500+.
Provenance: Collection Philippe Ferrary de la Renotière, Druout, Paris, sale 5, 15-17 Nov 1922, lot 126
Harmers, London, 13 Feb 1995, lot 1370.

41b+ 41 * **15'000** (€ 15'150)

Nigeria – Niger Coast Protectorate

1894 (January), 'Niger Coast' in Top Margin



ex 5288

Gibbons

Start price
in CHF Start price
approx. €

- 5288** **Niger Coast** 1893: Colour Trials (6), Imperforate set of six in unissued colours with ½ d. in deep violet, 1 d. in lake, 2 d. in dull blue, 2½ d. in orange, 5 d. in claret and 1 s. in emerald green; the ½ d. with some age spots otherwise a fresh and very fine set. Rare and attractive. *Provenance: Harmers, London, 14 Feb 1995, lot 1371.*

45/50 Proofs (*) **500** (€ 505)



5289

- 5289** 1894 (Jan 1): Oil Rivers obliterated, the complete set of six from ½ d. vermilion to 1 s. black, all used on 2 d. blue postal stationery registration envelope (235 x 100 mm.) all tied by "Old Calabar River" datestamps (Feb 28, 1894) in black. 'Registered / Liverpool' transit on front (April 5) and London arrival on reverse of an attractive cover.

45/50 ✉ **150** (€ 150)



5290

- 5290** 1894 (Jan 1): Oil Rivers obliterated ½ d. vermilion, 1 d. pale blue pair, 2 d. green used with July 1892 2½ d. purple on blue and rare December 1893 'Half / Penny' in violet on 2 d. grey-green & carmine (handstamped surcharge Type 7) all tied to large piece of registered stationery envelope by "Bonny River" datestamps (April 19, 1894) in black. A most unusual franking. *Provenance: Harmers, London, 20 Dec 1894, lot 1470.*

45/47+
20+ 4 △ **200** (€ 200)



5291



5292

- 5291** 1894 (Jan 1): 1 d. dull blue, two examples used on 1894 cover to London in combination with provisional Oil Rivers Sept 1893 ½ in red on half of 1 d. lilac, all tied by fine strikes of the "Bonny" squared circle datestamp (April 19) in black. "Paid / Liverpool / Br. Packet" cds in red on front (May 15) and Paddington arrival on reverse of a most attractive and scarce correctly rated cover.
- 5292** **Bonny River Provisional Bisects** 1894 (Jan 1): 1 d. dull blue, a diagonally bisected example used in combination with July 1892 Oil Rivers 2 d. grey-green & carmine each tied to 2 d. blue registered postal stationery envelope to Liverpool tied by "Bonny" squared circle datestamps (Sept 11, 1894) in black. Oval 'Registered / Liverpool' arrival (Oct 25) also on obverse. Slight trim to envelope at right but a correctly rate and scarce cover Gi = £ 650.

Gibbons

Start price
in CHF

Start price
approx. €

46+ 7 ☒ **250** (€ 255)46ba+ 3 ☒ **250** (€ 255)

5293

- 5293** **Oil Rivers** 1893: Waterlow Essay / Die Proof prior to 'Oil Rivers' being obliterated, 2 d. in myrtle green, imperforate on medium wove paper (26.5 x 32 mm.), with some retouching in pale bluish green ink below the value tablets at top and below the shells, slightest of tone spots otherwise fine. Rare.

47 Proof (*) **250** (€ 255)

5294

- 5294** 1894 (Jan 1): 2 d. green, the used horizontal pair, variety "Imperforate Between Vertically", of vibrant fresh colour, neatly cancelled by "Forcados River" circular datestamps (March 8, 1894) in black. Two small bends unapparent on face, a famous and extremely rare variety. Signed A. Diena. Certs. A. Diena (1957), BPA (2003) Gi = £ 17'000.
Provenance: Collection H. Gilbert, Spink in association with Harmers of New York, London, 15-16 June 2005, lot 1006.

47a

7'500 (€ 7'575)



5295



A trading Hulk along the Bonny River

Gibbons

Start price
in CHF

Start price
approx. €

- 5295 Bonny River Provisional Bisepts** 1894 (Jan): 2 d. green vertically bisected, 1 d. dull blue diagonally bisected and Oil Rivers 1892 2 d. grey-green & carmine vertically bisected, all used on 1894 cover to Everton, Liverpool, tied by bold strikes of "Bonny" squared circle datestamps (Sept 11) in black. 'Paid / Liverpool / Br. Packet' cds in red at left (Oct 25). Minor corner bends to envelope well away from the adhesives, but correctly rated and a rare 47b+ 46ba+ franking Gi = £ 2000+.

3a



750 (€ 760)



5296



5297



5298

- 5296 Oil Rivers** 1893: Waterlow Essay / Die Proof prior to 'Oil Rivers' being obliterated, stamp size imperforate Essay for the proposed 2½ d. value, printed in yellow-brown on medium wove paper, fresh and very fine. Rare and most attractive.
- 5297 Oil Rivers** 1893: Waterlow Essay / Die Proof prior to 'Oil Rivers' being obliterated, stamp size imperforate Essay for the proposed 5 d. value, printed in lilac on medium wove paper, fresh and very fine. Rare and most attractive.
- 5298** 1894 (Jan 1): 1 s. black, perf. 14½ x 15, an unused complete pane of thirty (6 x 5), margins all round with slight trim at upper right, fresh and fine but for some minor separation, large part og. or unmounted og. Scarce and most attractive Gi = £ 420+.

48 Essay (*) **250** (€ 255)

49 Essay (*) **250** (€ 255)

50 田*/** **150** (€ 150)

1894 (May), Modified Design, No Watermark



5299

Gibbons

Start price
in CHFStart price
approx. €

- 5299** 1894 (May): The complete set of six values, ½ d. yellow-green to 1 s. black, each handstamped by seriffed "SPECIMEN" by receiving administration upon receipt from the UPU, aged and with small imperfections including occasional bends, part og., nevertheless a very rare set.
Provenance: Grosvenor, London, 15-16 May 2003, lot 1031.

51s/56s spec

*

300

(€ 305)



5300



5301

- 5300** 1894 (May): The set of six values complete on 1894 registered cover to Bournemouth, all neatly cancelled by oval "Registered / Old Calabar" in black (July 5) and by "Registered / Liverpool" arrival (Aug 8) with arrival on reverse of an attractive cover.
Provenance: Harmers, London, 6-7 June 1978, lot 341.

51/56

✉

100

(€ 100)

- 5301** **Bonny River Provisional Bisects** 1894 (May): 1 d. vermillion diagonal bisect, July 1892 Oil Rivers 2 d. grey-green & carmine, Jan 1894 1 d. pale blue and 2 d. green vertically bisected all used on 1894 registered cover to Luton, tied by "Bonny" squared circle datestamps (Sept 11) in black. "Registered / Liverpool" transit on obverse (Oct 25) and Luton arrival on reverse. Minor age spt on the 2 d., otherwise a fine correctly rated cover Gi = £ 800+.
Provenance: Cavendish, Derby, 11-12 March 1994, lot 94.

52b+ 3+ 46+
47b

✉

300

(€ 305)



5302

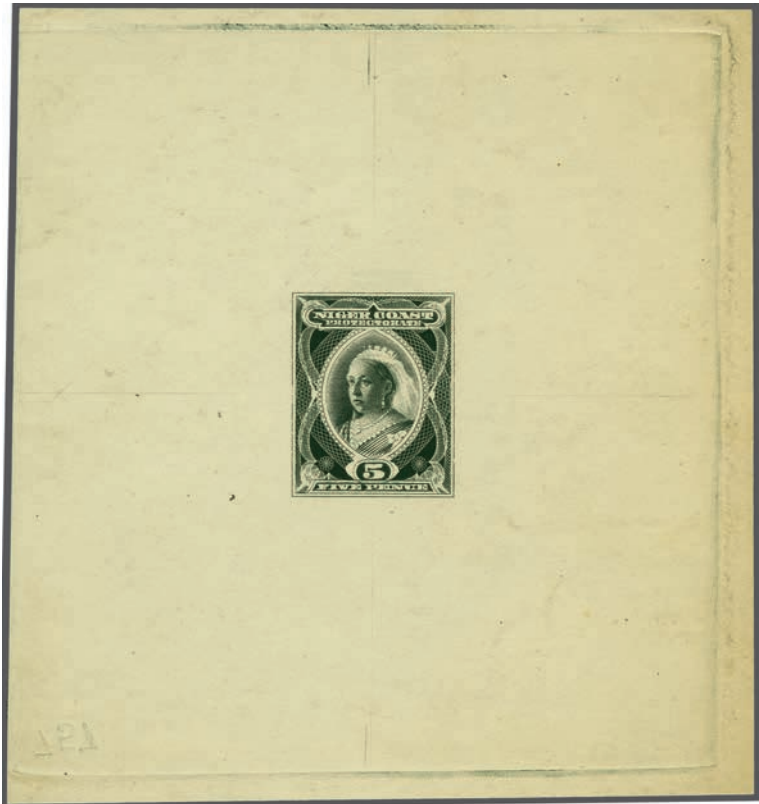
- 5302** 1894 (May): 2½ d. blue, a used example on 1895 cover to Bournemouth tied by italic **PAQUEBOT** in black with 'Paid / Liverpool / Br. Packet' cds in red at left (May 2). Reverse with Bournemouth arrival cds. Some wear and wrinkles but a scarce commercial usage.

54

✉

100

(€ 100)



5303

5303 1894: Waterlow 5 d. Essay printed in black, centrally placed on cream surfaced wove paper (97 x 105 mm.), the legend "Niger Coast / Protectorate" and Duty Plate "5 / Five Pence" beautifully hand-painted in Chinese white. Numbered at base '757' reversed. A wonderful example of both the artist's and the printer's art, unique.
Provenance: Grosvenor, London, 15-16 May 2003, lot 1029.

Gibbons			
		Start price in CHF	Start price approx. €
55 Essay	(*)	1'000	(€ 1'010)

1894, OPOBO Provisionals



5304

5304 1894 (May): '1/2' in red on left half of 1 d. pale blue, a used example, tied to small piece by "Opobo River" circular datestamp (Aug 22, 1894) in black. Pers. somewhat blunted at base but scarce with just one sheet of 60 = 120 stamps issued Gi = £ 375.

58	△	120	(€ 120)
----	---	-----	---------



5305

Gibbons
Start price in CHF Start price approx. €

5305 1894 (June): Large 12 mm. surcharge '1' in vermillion on left half of 1892 2 d. grey-green & carmine, variety "Surcharge Double", an unused example from top left corner of the sheet, of fine fresh colour, without gum. An extremely rare stamp. Cert. BPA (1990) Gi = £ 6'500.
Provenance: Collection Rossi, Warwick & Warwick, Coventry, 8 June 2005, lot 483.

59a (*) **2'000** (€ 2'020)



5306



5307



5308

5306 1894 (August): '½' in violet on left half of 1894 1 d. orange-vermilion, a used example cancelled by large part "Opobo River" circular datestamp (Oct) in black. Minor imperfections on perfs. but very scarce with less than 80 stamps possible. Cert. RPSL (1950) Gi = £ 700.
Provenance: Collection Joseph Silkin.

63 **250** (€ 255)

5307 1894 (August): '½' in blue on left half of 1894 1 d. orange-vermilion, a used example cancelled by large part "Opobo River" circular datestamp in black. Minor imperfections on perfs. but very scarce with circa 80 stamps possible. Cert. BPA (2021) Gi = £ 550.

64 **200** (€ 200)

5308 1894 (August): '½' in blue on right half of 1894 1 d. orange-vermilion, a used example tied to small piece by "Opobo River" circular datestamp (Sept 29, 1894) in black. Very scarce with circa 80 stamps possible. Signed A. Diena. Cert. BPA (2021) Gi = £ 550.

64 △ **200** (€ 200)

1894 (August): Issued at Old Calabar



5309

5309 Provisional surcharge ½ d. on 2½ d. blue, an unused example of fine fresh colour, large part og. Scarce, just 960 stamps issued Gi = £ 425.

65 * **180** (€ 180)



5310



5311

5310 Provisional surcharge ½ d. on 2½ d. blue, variety "Surcharge Double", a used example on 1894 cover front to Old Calabar tied by "Old Calabar River" circular datestamp (Sept 15) in black, with information strike alongside. Minor bends at left well away from the adhesive but of great scarcity Gi = £ 2'000+.

*Provenance: Collections Bates and Pilkington (1954)
Spink, London, 6-7 Dec 2006, lot 1351.*

5311 Provisional surcharge ½ d. on 2½ d. blue, a used example, variety "OIE for ONE", position 8 in the Setting, tied to small piece by "Obopo River" circular datestamp (Christmas Day, 1896) in a rusty black shade. A very fine and scarce stamp Gi = £ 1'200.

Gibbons

Start price
in CHF Start price
approx. €

65a (⊠) **750** (€ 760)

65b △ **400** (€ 405)



5312



variety
"OIE for ONE"

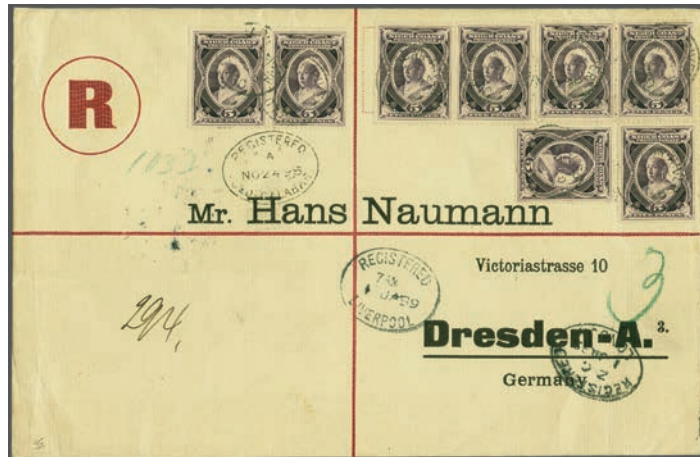
5312 Provisional surcharge ½ d. on 2½ d. blue, a used example, variety "OIE for ONE", on 1894 registered cover to London in combination with 1894 2 d. lake pair and single 2½ d. blue all tied by "Old Calabar" squared circle datestamps in black (Nov 19). Large 'R' below and oval framed 'Registered / Old Calabar' datestamp at base. Reverse with Liverpool transit and London arrival (Dec 25). A fine and rare cover Gi = £ 1'200+.

65b+ 53+ 54



500 (€ 505)

1897/98, Waterlow Design, Watermark Crown CA



5313



Interior of Palm Oil Factory at Old Calabar

5313 5 d. reddish-violet, eight examples used on registered cover to Dresden, Germany all lightly cancelled by "Old Calabar" circular datestamps (Nov 24) with oval 'Registered / Old Calabar' datestamp alongside. Registered Liverpool and London transits also on front and reverse with Dresden arrival (Jan 3, 1899). A charming and rare franking.

5314 1 s. black in a complete unused sheet of thirty (6 x 5) with sheet requisition number 268 in red at upper right, 2 s 6 d. olive-bistre in an unused block of twelve (3 x 4) from upper left of sheet and 10 s. violet in an unused block of four from upper left corner of the sheet, all generally fresh and fine, large part or unmounted og. An attractive group Gi = £ 1'200+. (Photo = www)

Gibbons

Start price
in CHFStart price
approx. €

70

✉

350

(€ 355)

72+ 73+ 74

田*/**

350

(€ 355)



5315



5316



5317

5315 Waterlow Die Proof for the 10 s. value, Imperforate, printed in black on medium cream wove paper (30 x 37 mm.) with file number '2549' in manuscript ink at top. Superb and very rare. Provenance: Grosvenor, London, 15-16 May 2003, lot 1034.

5316 10 s. deep violet, wmk. Crown CA, perf. 14, an unused block of four of fine fresh colour, large part og. Gi = £ 720+.

5317 10 s. bright violet, wmk. Crown CA, perf. 14, an unused corner marginal horizontal pair from top right corner of the sheet with sheet requisition number 229 in red, variety "Watermark Reversed", of fine fresh colour, typical minor wrinkles on large part og. Scarce and most attractive Gi = £ 1'200.

5318 The cancellation study on leaves with large range of used incl. 10 s. value (9) and a provisional 1894 ½ d. on 2½ d. blue (cert. RPSL), much duplication and some fine multiples, with cancellations of Benin River, Bonny River, Brass River, "Brass / Southern Nigeria" on 10 s. pair, Focados River, Old Calabar River, Opobo River, Qua Iboe River, Sapele, Sombreiro River, Warri, Asaba, Akassa, Burutu etc. A charming lot in generally fine quality (153 items) Gi = £ 4'000+. (Photo = www)

74 Proof

(*)

750

(€ 760)

74

田*

200

(€ 200)

74bx

*

400

(€ 405)

65/74

△田

1'000

(€ 1'010)

Niger Company Territories



5319



Sir James Marshall

Gibbons

Start price
in CHF Start price
approx. €

5319 Akassa 1899: Great Britain 1887 Jubilee 6 d. deep purple on red, a vertical pair used on 1889 cover addressed to Sir James Marshall (the former Chief Judge of the Gold Coast) in London, tied by oval framed "+ THE ROYAL NIGER COMPANY CHARTERED LIMITED + / AKASSA" in violet (Sacher Type 1) and manuscript dated '2/6/89'. Circular 'Paid / Liverpool / Br. Packet' cds (July 12) in red and the adhesives further cancelled on arrival in Liverpool with '466' obliterations in black. The sole recorded usage of this marking with manuscript date cancelling adhesives on letter. An exceptional and famous cover.

Provenance: Collection Colonel J.R. Danson, RL, London, 10 March 1971, lot 1557

Collection John Sacher, Spink, London, 12 Nov 2009, lot 353.

Z7 1'500 (€1'515)



5320



Employees of the Royal Niger Company

5320 Akassa 1896: Great Britain 1881 1 d. lilac in a horizontal pair and single 1887 Jubilee ½ d. vermillion used on 1896 cover to Edinburgh, tied by superb strike of double framed "THE ROYAL NIGER COMPANY / CHARTERED & LIMITED / POST OFFICE / AKASSA" despatch (Sacher Type 6, SG Type 4) in violet (June 18) with further information strike at lower left. "PAID / LIVERPOOL / BR. PACKET" datestamp (July 30) in red at left. Reverse with 'Edinb.-Carlisle / Sorting Tender' cds (July 31) in black and manuscript notation "For Johnnie, African stamps from the Niger". Central file fold well away from the adhesives, a fine and very scarce cover.

Provenance: Collection R.B. Sanderson (1980)

Collection John Sacher, Spink, London, 12 Nov 2009, lot 379.

Z17+ Z18 400 (€405)



5321



5322

- 5321** **Burutu** 1897: Great Britain 1887 Jubilee 2½ d. purple on blue (3) and 10 d. dull purple & carmine used on 1897 linen cover to the Royal Niger Company in London endorsed "pr. S.S. Biafra", tied by double framed "THE ROYAL NIGER COMPANY / CHARTERED & LIMITED / POST OFFICE / BURUTU" despatch (SG Type 6) in violet (Sept 15); with "Paid / Liverpool / Br. Packet" cds in red (Oct 17) at left and London arrival on reverse. A fine and scarce cover.

Provenance: Christies, London, 19 Nov 1996, lot 214.

Gibbons

Start price
in CHF Start price
approx. €

Z53+ Z47



250 (€ 255)

- 5322** **Burutu** 1899: Great Britain 1887 Jubilee 2½ d. purple on blue used on 1899 double rate cover to Birmingham, tied by double framed "THE ROYAL NIGER COMPANY / CHARTERED & LIMITED / POST OFFICE / BURUTU" despatch (SG Type 4, seriffed) in violet (Dec 8); and by "Paid / Liverpool / Br. Packet" cds in red (Dec 31). Reverse with Birmingham arrival cds. A fine and attractive cover.

Z59



150 (€ 150)



5323



5324

- 5323** **Lokoja** 1900: Great Britain 1881 1 d. lilac, a single example used on 1900 cover to London, tied by superb oval "LOKOJA / POST OFFICE" despatch (Sacher Type 13, SG Type 8) in violet (April 3); with "Forcados River" transit cds (April 16) and London arrival (May 11) on reverse. A rare late usage of British stamps in the Niger Company Territories with the latest date recorded being April 2, 1900; this cover being dated one day later. Attractive and scarce.

Z72



250 (€ 255)

- 5324** **Lokoja** 1899: Great Britain 1883/84 2 s. 6 d. deep lilac on white paper, tied to small piece by complete strike of oval "LOKOJA / POST OFFICE" datestamp (Sacher Type 13, SG Type 8) in violet (Oct 8, 1899). A gem Gi = £ 1'200.

Provenance: Collection H.G. Porter (1956).

Z76



500 (€ 505)

Northern Nigeria



5325

Gibbons

Start price in CHF Start price approx. €

- 5325** 1899: De La Rue *Appendix Sheet 'A'*, dated at top "*Sept 15th 1899*" in manuscript, with Northern Nigeria ½ d. dull mauve & green Essay with "NORTHERN NIGERIA" hand-painted in green and Duty Plate "½ d." hand-painted in Chinese white over the background to the Duty Plate painted in green; with eight IMPERIUM 6 d. values in doubly-fugitive inks in various colours with indications of values in manuscript, four in issued colours and the higher values, 6 d. to 10 s., in unissued combinations of colours. Illustrated in "*The De La Rue Collection*" edited by Frank Walton RDP., on page 5167 and illustrated in "*The Postal Services of the British Nigeria Region*" by Jack Ince and John Sacher on Plate XIV. A couple of minor age stains at top but magnificent and unique.

1/9 Essay

(*)

3'000 (€ 3'030)



5326



A main street in Bida

- 5326** 1900 (April): ½ d. dull mauve & green, a horizontal pair used on cover to Halifax, Nova Scotia endorsed 'via England' cancelled by "Bida 17/7/01" in ink manuscript, reverse with oval framed "LOKOJA / POST OFFICE" transit datestamp (SG Type 8) struck in violet (July 22) and 'Halifax N.S. / Canada' arrival cds in black (Aug 24). Central file fold but a very rare cover.

Gibbons

Start price
in CHF Start price
approx. €

1



250 (€ 255)



5327



5328



5329

- 5327** 1900 (April): 2 s. 6 d. green & ultramarine, a used block of four, the first stamp with slightest of fading and the fourth with one short perf. at base, neatly cancelled by 'Northern Nigeria' cds's in black (Oct 3, 1902). An exceptionally scarce stamp in a multiple Gi = £ 3'400.
- 5328** 1900 (April): 10 s. green & brown, a fine used example neatly cancelled by 'Northern Nigeria' cds (March 22, 1902) in black. An extremely scarce stamp in used condition. Cert RPSL (1973) Gi = £ 950.
- 5329** 1902 (July 1): 1 s. green & black, wm. Crown CA, an unused Imprimatur / Colour Trial Imperforate horizontal pair, touched into frame at right and with slight grease spots, large part og. Despite imperfections, a scarce pair.

8



850 (€ 860)

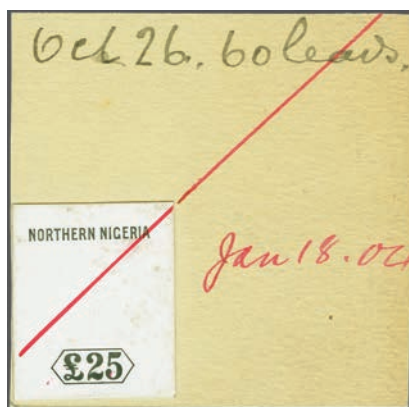
9

350 (€ 355)

16 Proof



120 (€ 120)



5330

Gibbons

Start price
in CHFStart price
approx. €

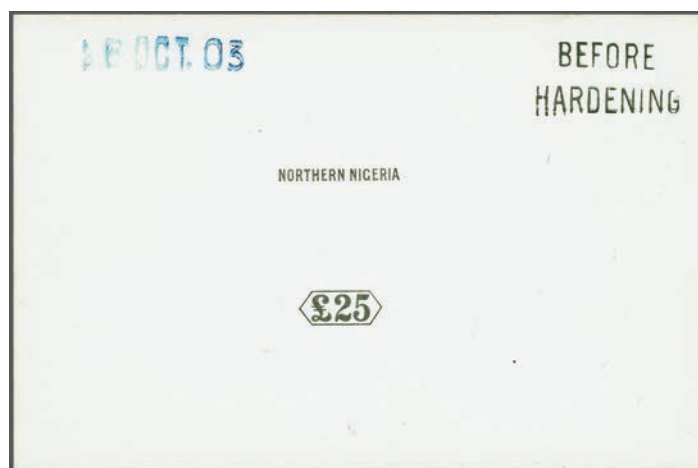
- 5330** 1903: De La Rue Die Proof for £ 25 value, with 'Northern Nigeria' and Duty Plate printed in black on glazed white card, on card from the printer's Day Book, with manuscript "Oct 26. 60 leads" at top; crossed through and dated "Jan 18 04" in red ink. Superb and very rare.

19 Proof

(*)

250

(€ 255)



5331

- 5331** 1903: De La Rue Die Proof for £ 25 value, with 'Northern Nigeria' and Duty Plate printed in black on glazed white card, handstamped BEFORE / HARDENING in black and dated '16 OCT. 03' in blue. Scarce and fine.

19 Proof

(*)

250

(€ 255)



5332



ex 5333

- 5332** 1904 (April): De La Rue Imperforate Colour Trial for the famous £ 25 value, on watermarked Multiple Crown CA paper, printed in green & chestnut, fresh and fine, large part og.

19 Proof

*

200

(€ 200)

- 5333** 1910/11: Definitive set of eleven complete, wmk. Multiple Crown CA, all overprinted SPECIMEN in black, the 2½ d. with slight rub and the 2 s. 6 d. with one toned perf., otherwise fresh and fine, large part og. Gi = £ 350.

28s/39s spec

*

120

(€ 120)

- 5334** 1900/1912: Collection on leaves with first issue set of nine unused, 1900 10 s. green & brown in an unused block of four, 1890 2 d. used on cover tied by oval "Lokoja / Post Office" in violet, 1902 definitive set unused, 1905/07 definitive set unused and additional 2 s. 6 d. in an unused block of four, 1910/11 definitive set of eleven unused and additional 5 s. in a block of four, 1912 set of thirteen unused etc. A generally fine lot (58 items) Gi = £ 2'800+.

(Photo = www)

1-52

600

(€ 605)

Southern Nigeria

Stampless Covers



5335



5336

Gibbons

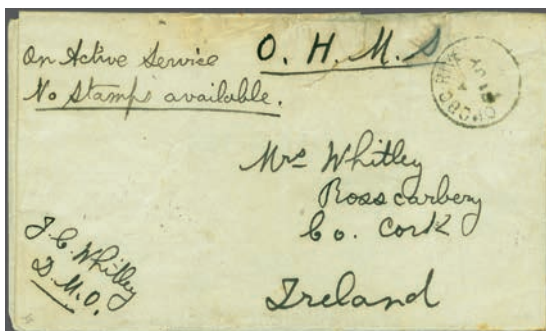
Start price
in CHF Start price
approx. €

- 5335** 1900: Cover mailed prior to issue of Southern Nigeria adhesives, prepaid in cash with "Paid 1d. C.F." in red manuscript, struck with "BONNY RIVER" code A cds (April 6) in black. Reverse with Manchester arrival cds (April 26). Creased, some wear at edges but rare. Provenance: Collection W.C. Hinde; Collection Col. J.R. Danson, RL, London, 10 March 1971, ex lot 1830.

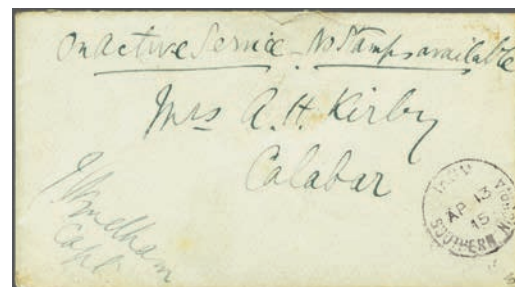
✉ **200** (€ 200)

- 5336** 1902: **Aro Field Force**, a stampless envelope to Dunnville, Canada endorsed "On Active Service, with Aro Field Force, Southern Nigeria, W. Africa" and "No Stamps available, Lt. A. Rastrick", struck with "OPOBO RIVER" cds (Feb 28) in black. Reverse with Dunnville duplex of arrival (April 9). A fine and scarce cover to an unusual destination - the Aro Campaign lasted from 15 November 1901 until 23 March 1902.

✉ **300** (€ 305)



5337



5338

- 5337** 1902: Stampless Campaign cover to Rosscarbery, Co. Cork, Ireland endorsed "O.H.M.S." and "On Active Service, No Stamps available", and endorsed "J.C. Whitley / D.M.O." (District Medical Officer) struck with "OPOBO RIVER" code A cds (July 21) in black. Reverse with Rosscarbery cds of arrival (Aug 18). Probably from a member of the Field Hospital remaining after the Aro Campaign. Closed tears at top and on flap but scarce.

✉ **200** (€ 200)

- 5338** 1915: Stampless cover to Calabar headed "On Active Service, No Stamps Available" and correctly counter-signed at lower left by a Captain J. Wyndham, struck with "IKOM / SOUTHERN NIGERIA" cds (April 13) in black. Reverse with "Calabar / Southern Nigeria" arrival cds (April 19). Scarce.

✉ **200** (€ 200)

1901/02, Watermark Crown CA, Perf. 14



5339



5340

		Gibbons		Start price in CHF	Start price approx. €
5339	1900: De La Rue Die Proof for the vignette / head-plate with uncleared surround and horizontal notch marks at sides, printed in black on surface glazed white card, dated "21 JUL 00" in blue and struck with "BEFORE / HARDENING" in black. Superb and very rare.	1 Proof	(*)	400	(€ 405)
5340	1900 (Oct 8): De La Rue Master Die Proof for the vignette only, printed in black on glazed white card, dated "11 OCT. 00" in blue and "AFTER STRIKING" in black, signed "H.G." below the design. Minor dust but rare and very fine. <i>Provenance: Collection Whitfield.</i>	Proof	(*)	350	(€ 355)



5341



5343



5342

5341	1900: De La Rue Die Proof for the vignette / head-plate with uncleared surround, printed on thick surface glazed white gummed paper (53 x 58 mm.), struck in deep green with notch mark at left of frame and partially so at right, with Printer's vertical flaw behind the Queen's head. A rare and most attractive Proof. <i>Provenance: Collection W.C. Hinde.</i>	1 Proof	(*)	400	(€ 405)
5342	1900: De La Rue Die Proof for the vignette / head-plate with uncleared surround, printed on thick surface glazed white gummed paper (53 x 58 mm.), struck in black with notch mark at left of frame and partially so at right. A rare and most attractive Proof. <i>Provenance: Collection Col. J.R. Danson, RL, London, 10 March 1971, ex lot 1836.</i>	1 Proof	(*)	400	(€ 405)
5343	1900: De La Rue Die Proof for the vignette / head-plate with uncleared surround, printed on thick surface glazed white paper with gum (54 x 63 mm.), struck in mauve. Extremely rare: believed unique in this colour. <i>Provenance: Collection W.C. Hinde Collection Col. J.R. Danson, RL, London, 10 March 1971, ex lot 1836.</i>	1 Proof	(*)	750	(€ 760)



ex 5344

Gibbons

Start price in CHF Start price approx. €

5344 1900 (Oct 8): De La Rue Die Proofs for the frame only - the complete set of nine - all printed in black on glazed white card, dated "12 OCT. 00" in blue (½ d. and 1 d.), "20 OCT 00" (2 d. and 4 d.), "30 OCT 00" (6 d. and 1 s.), 13 NOV 00" (2 s. 6 d, 5 s and 10 s.) and all struck with "BEFORE / HARDENING" in black at right. A rare and remarkable set.

1/9 Proofs (*) **1'750** (€ 1'770)



ex 5345

ex 5346

5345 1901 (March): The first definitive set of nine values, wmk. Crown CA, all overprinted SPECIMEN in black, 1 s. without gum, otherwise fresh and fine, large part og. Gi = £ 250.

1s/9s * **100** (€ 100)

5346 1901/02: First Issue, the set of nine values from ½ d. to 10 s. black & purple on yellow, incl. a 1902 ½ d. sepia & green block, all in unused blocks of four, fresh colours and fine, large part og. or mostly unmounted og. Robson Lowe's Encyclpaedia rates blocks at 5-6 times normal, a scarce and charming set Gi = £ 1'000+.

1/9 田*/** **400** (€ 405)



5347



Heinrich von Angeli

Gibbons

Start price in CHF Start price approx. €

5347 1900 (April 3): De La Rue photographic Essay for proposed 10 shilling value, using the von Angeli Victoria head-plate, imperforate on card (89 x 114 mm.) marked "C" at upper left, dated in manuscript "April 3rd, 1900" with "Dupl." at base; the design without "Postage" or "Revenue". Illustrated in the "De La Rue Collection" edited by Frank Walton RDP on page 6067, this example showing hand-painted additions in black. The sole recorded example although two should exist, the other would have been sent to the Crown Agents. De La Rue replied to the Crown Agents on July 10, 1900 that, in order to save the Colony expense, they would introduce an impression from a head-plate Die which they would be happy to use free of charge.

Essay (*) **750** (€ 760)



5348

5348 1900 (April 3): De La Rue photographic Essay for proposed 10 shilling value, using the von Angeli Victoria head-plate, imperforate on card (89 x 114 mm.) marked "A" at upper left, dated in manuscript "April 3rd, 1900" with "Dupl." at base; the design without "Postage" or "Revenue". Illustrated in the "De La Rue Collection" edited by Frank Walton RDP on page 6067. The sole recorded example although two should exist, the other would have been sent to the Crown Agents.

Essay (*) **750** (€ 760)



Sir Ralph Denham Rayment Moor



5349

Gibbons

Start price in CHF Start price approx. €

5349 1900 (July 30): De La Rue composite Essay for the 10 s. value, with green head-plate inserted within blue & pale blue imperforate frame showing country legend, Duty Plate and "Postage" and "Revenue", with tracing paper swatch showing proposed designs for the 2 s. 6 d. Duty Plate with three different versions hand-painted in Chinese white on brown background. Dated at top right "July 10th 1900" with "Dupl. copies submitted: Head: Green (and) Black, Border: Red Brown (and) Blue marked C and D" respectively. Illustrated in the "De La Rue Collection" on page 6068. Magnificent and unique.
Note: Sir Ralph Denham R. Moor (1860-1909) was the first High Commissioner for Southern Nigeria and was in England when this Essay was first proposed. De La Rue wrote on July 30, "He (Moor) has agreed to adopt stamps of the ordinary postage size and has asked to see designs with either the borders or the centres following as nearly as possible the colours of the present Niger Coast Protectorate stamps. It would be well to enable him to judge of the effect, to print some Specimens on red or blue paper...and to make them bolder than designs C and D of the 10th instant".

9 Essay (*) 2'000 (€ 2'020)



- 5350** 1900 (Aug 11): De La Rue composite Essay for the 10 s. value, with green head-plate inserted within emerald & pale green imperforate frame showing country legend, Duty Plate and "Postage" and "Revenue", the Essay marked "E" at top left and dated at top right "Aug 11th 1900" with "Dupl." at base. Illustrated in the "De La Rue Collection" on page 6069 - the Crown Agent's letter to DLR stated "it will be necessary to have in all cases the centre, or the border, in doubly fugitive ink...". Slight surface scuff at lower right but rare and most attractive.
- 5351** 1900 (Aug 11): De La Rue composite Essay for the 10 s. value, with grey head-plate inserted within vermillion imperforate frame showing country legend, Duty Plate and "Postage" and "Revenue", the Essay marked "F" at top left and dated at top right "Aug 11th 1900" with "Dupl." at base. Illustrated in the "De La Rue Collection" on page 6069 - the Crown Agent's letter to DLR stated "it will be necessary to have in all cases the centre, or the border, in doubly fugitive ink...". Slight surface scuff at lower left but rare and most attractive.
- 5352** 1900 (Aug 11): De La Rue composite Essay for the 10 s. value, with greenish-black head-plate inserted within deep blue & blue imperforate frame showing country legend, Duty Plates now in both lower corners and "Postage" and "Revenue" moved to base, the Essay marked "G" at top left and dated at top right "Aug 11th 1900" with "Dupl." at base. Illustrated in the "De La Rue Collection" on page 6069. This was the last 'new' issue to be specifically designed for Queen Victoria. Rare and most attractive.

Gibbons		Start price in CHF	Start price approx. €
9 Essay	(*)	1'000	(€ 1'010)
9 Essay	(*)	1'000	(€ 1'010)
9 Essay	(*)	1'000	(€ 1'010)



5353

Gibbons

Start price
in CHFStart price
approx. €

- 5353** 1900 (Aug 11): De La Rue composite Essays (3) for the 10 s. value in three different combinations of colours (as per the previously offered Essays FA, G and H), the black & red and greenish-black and blue examples illustrated in the "De La Rue Collection" on page 6069, the mauve & purple example appeared in an auction in 1968 prior to the major dispersal of the De La Rue archives. A rare and most attractive group.

9 Essays

(*)

750

(€ 760)



ex 5354

- 5354** 1901/02: De La Rue Colour Trials for the 10 s. value (3), all imperforate on gummed watermarked paper, with first in grey & violet, another in dull green & bright violet and the third example in grey & pale blue-green; none of the combinations of colours were utilised in the issue, fresh and very fine, large part og. A rare group.

Note: For similar imperforate Colour Trials see "The De La Rue Collection" edited by Frank Walton RDP., page 6074.

9 Proofs

*

350

(€ 355)



5355

- 5355** 1901/02: 10 s. black & purple on yellow, a single example used on 1902 registered cover to Germany tied by oval framed "Registered / Old Calabar" datestamp (July 10) with repeated information strike at left, London transit in red (Aug 3) on front and Buchholz arrival (Aug 5) on reverse; file fold well away from the fine and scarce adhesive Gi = £ 300 off cover.

9

✉

175

(€ 175)

- 5356** 1901/02: The unused first issue collection on leaves with the set of nine in blocks of four, additional ½ d., 1 d., 6 d. and 5 s. blocks in differing shades; and a further single set; well written up on leaves, a fresh and fine group Gi = £ 1'500+.

(Photo = www)

1/9 田*/**

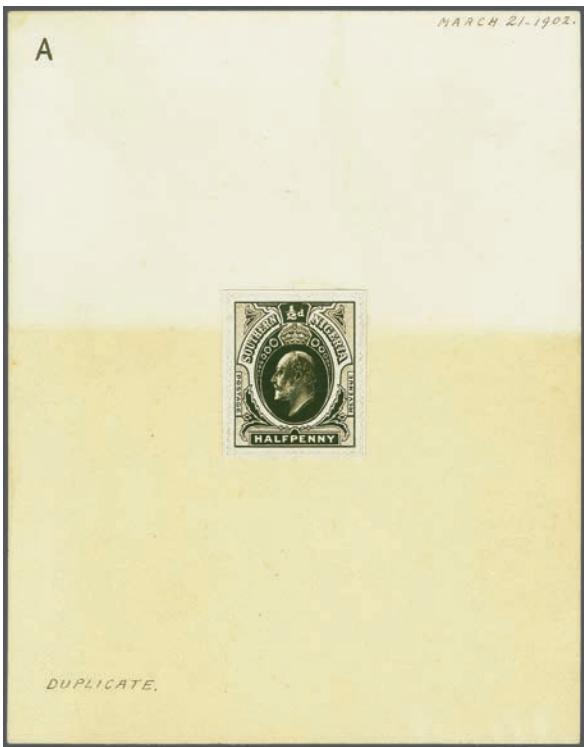
500

(€ 505)

1903/04 and Later Issues



5357



5359

5357 1902: De La Rue Die Proof for the Edward VII vignette only, printed in black on glazed white card, dated "10 JUN. 02" in blue and struck with "BEFORE / HARDENING" in black. Fresh and very fine.

Gibbons		Start price in CHF	Start price approx. €
Proof	(*)	250	(€ 255)



ex 5358



ex 5360

5358 1903 (March): Definitive set of eleven values, wml. Crown CA, all overprinted SPECIMEN in black, 2½ d. with gum bend and 5 s. slight stain on gum, otherwise fine and of fresh colour, large part og. Scarce set Gi = £ 350.

5359 1902: De La Rue photographic Essay for Edward VII ½ d. value, as per the previous lot (with head-plate in brownish-black and frame taken from a Die Proof in black on glazed card with 'perforations' drawn in pencil), imperforate on display card marked "A" at top left and dated "March 21-1902" at top right, "DUPLICATE" at lower left. This Essay was retained for De La Rue's records and is illustrated in the "De La Rue Collection" edited by Frank Walton RDP on page 6073; some minor aging in lower half does not detract.

5360 1903/04: Printed by De La Rue, wmk. Crown CA, the unused set of eleven values from ½ d. to £ 1 green & violet, fresh and very fine colours, some minor unobtrusive age spots on gum but the two high values very fine, large part og. or unmounted og. A very scarce set Gi = £ 650.

5361 1903/04: Fine page with ½ d., 1 d., 2 d., 2½ d., 4 d., 6 d. and 2 s. 6 d. values in unused blocks of four; single 2 s. 6 d. with Plate Number '1' in margin, 10 s. unused (2) and £ 1 green & violet unused, all with fresh colours, generally fine, large part og. Gi = £ 950 (Photo = www)

10s/20s	*	150	(€ 150)
10 Essay	(*)	500	(€ 505)
10/20	*	180	(€ 180)
10/15+ 17+ 19/20	* 田*/**	200	(€ 200)



5362



5365

5362 1902: De La Rue Die Proof for the 2½ d. value, frame only, printed in black on glazed white card, dated "23 NOV. 03" in blue and struck with "AFTER / HARDENING" in black. Fresh and fine, only the newly added values, the 2½ d. and £ 1, needed to have frame only Proofs struck for this issue.

Gibbons		Start price in CHF	Start price approx. €
13 Proof	(*)	250	(€ 255)



5363

5364

5366

5363 1903 (Dec 14): De La Rue Colour Trial for the 2½ d. value, Imperforate on wmk. Crown CA paper, printed in deep green & ultramarine, fresh and fine, large part og. Rare, probably emanated from the duplicate Appendix sheet.

13 Proof	*	200	(€ 200)
----------	---	-----	---------

5364 1903/04: 10 s. grey-black & purple on yellow, wmk. Crown CA, an unused example, marginal from base of sheet showing Plate Number '1' in margin, with large Printer's Flaw to left of King's head, large part og. Most unusual.

19 var	*	120	(€ 120)
--------	---	-----	---------

5365 1902: De La Rue Die Proof for the £ 1 value, frame only, printed in black on glazed white card, fresh and fine, only the newly added values, the 2½ d. and £ 1 needed to have frame only Proofs struck for this issue.

20 Proof	(*)	250	(€ 255)
----------	-----	-----	---------

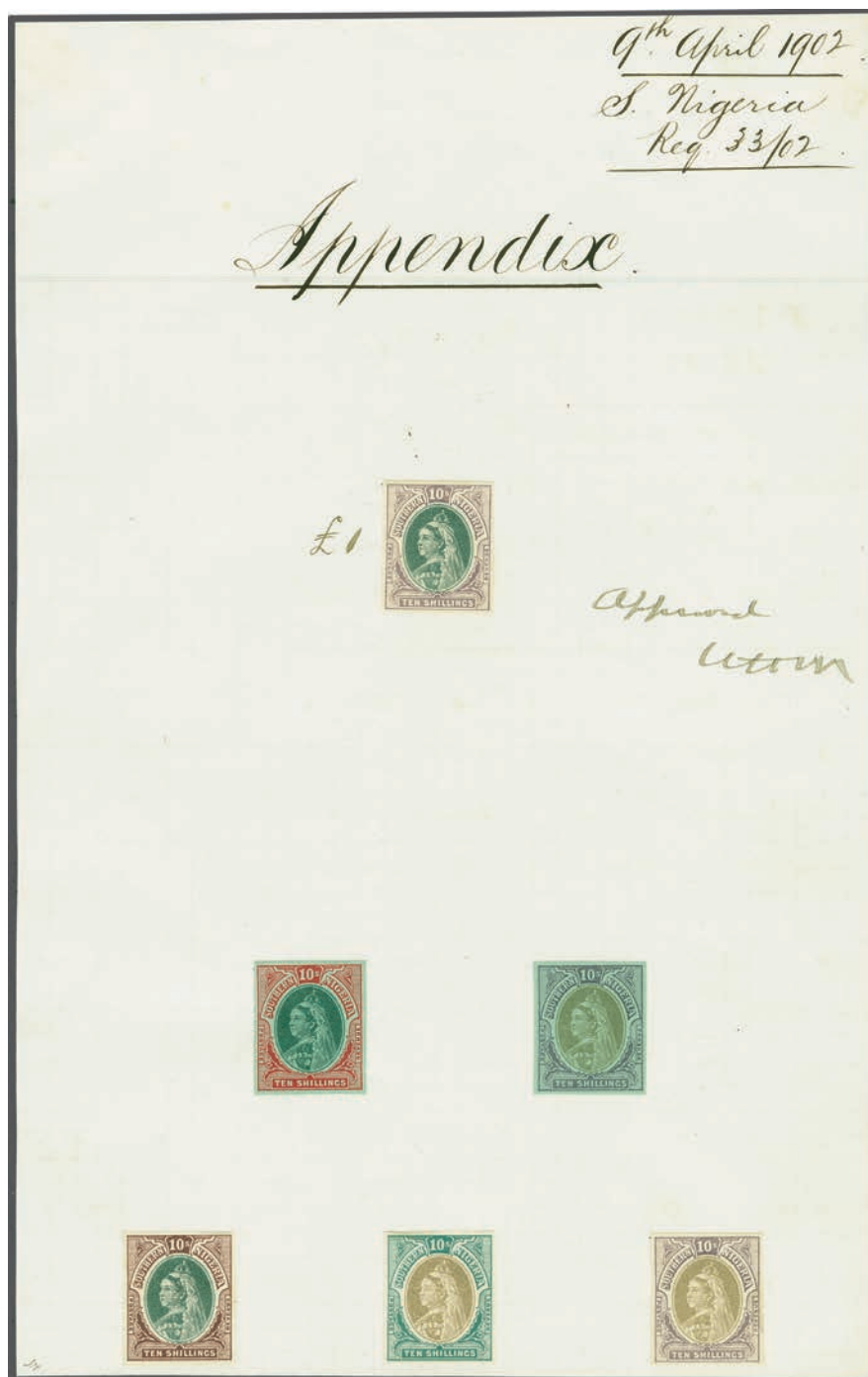
5366 1902 (April 9): De La Rue Colour Trials for the Edward VII 1903 issue but utilising Queen Victoria 10 s. designs, prepared for the proposed £1 value, two examples, imperforate on thick card: printed in green & purple-brown and in grey & green; fresh and fine.

Note: The Queen Victoria 1901 set did not contain a £1 value thus the need for the above Trials, the Colour Trials executed for the Victorian issue utilised the ½d. value.

Provenance: First ex collections Porter and Whitfield

Second ex collection Col. J.R. Danson, RL, London, 10 March 1971, lot 1843.

20 Proofs	(*)	250	(€ 255)
-----------	-----	-----	---------



5367

Gibbons

Start price Start price
in CHF approx. €

- 5367** 1902 (April 9): De La Rue Appendix sheet for the Edward VII 1903 issue but utilising Queen Victoria designs, dated at top "9th April 1902" in manuscript; showing imperforate Colour Trials of the 10 s. value (6), with top example in green & violet chosen for the "£1" value indicated in manuscript and signed as "Approved" by Sir William Mercer; with further examples at base all in colours not used for the issue. Illustrated in the "De La Rue Collection" edited by Frank Walton RDP on page 6074. Historic, delightful and rare.
Note: The Queen Victoria 1901 set did not contain a £1 value thus the need for the above Trials, the Colour Trials executed for the Victorian issue utilised the 1/2d. value.
Provenance: Two ex collection Col. J.R. Danson, RL, London, 10 March 1971, lots 1840 and 1842.

20 Proofs

(*)

1'500 (€1'515)



5368



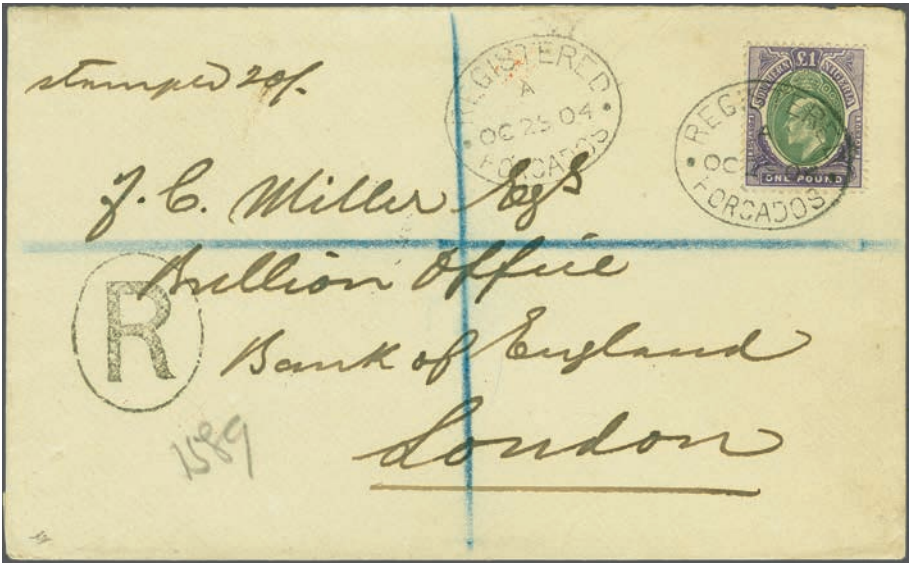
5369

- 5368** 1903/04: Second Issue, £ 1 green & violet, a horizontal strip of four, all overprinted SPECIMEN in black horizontally at base, fresh colour and slightly aged large part og. with two unmounted og. A rare multiple.
- 5369** 1903/04: £ 1 green & violet, wmk. Crown CA, an unused block of four, centred to right, of fine fresh colour, large part og., lower pair unmounted og. A very rare multiple, just 1'080 stamps issued Gi = £ 1'900+.

Gibbons		Start price in CHF	Start price approx. €
20 spec	*/**	150	(€ 150)
20	田*/**	600	(€ 605)



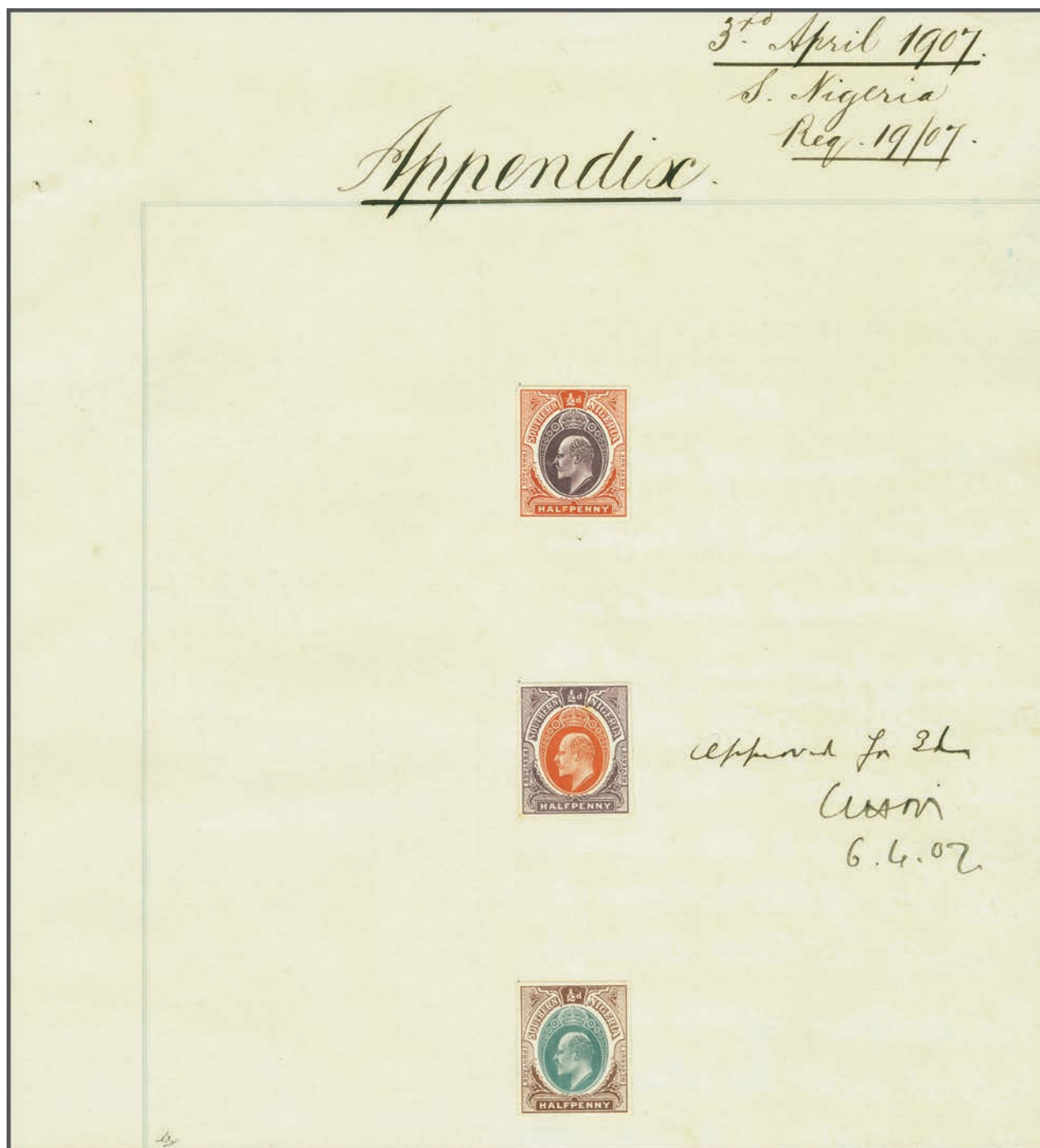
The Bullion Office in London



5370

- 5370** 1903/04: £ 1 green & violet, wmk. Crown CA, a superb used example on 1904 registered cover to the Bullion Office in London, tied by oval "Registered / Forcados" datestamp (Oct 29) in black. Reverse with Plymouth transit and London (Nov 16) arrival datestamps. An extremely rare stamp in used condition (Gi = £ 1'000) and an outstanding and rare cover.

20	✉	500	(€ 505)
----	---	-----	---------



5371

Gibbons

Start price
in CHF Start price
approx. €

- 5371** 1907 (April 3): De La Rue Appendix sheet dated "3rd April 1907" at top with imperforate ½ d. Colour Trials (3) for the choice of colours for the proposed new 3 d. value, with ½ d. brownish-violet & brown, ½ d. orange-brown & bright purple with manuscript "Approved for 3 d. 6.4.07" and signed by Sir William Mercer and the third examples in dull green & brown. Illustrated in the "De La Rue Collection" edited by Frank Walton RDP on page 6075. Rare and most attractive sheet.

21 Proofs

(*)

1'200 (€ 1'210)



5372

Gibbons

Start price
in CHF Start price
approx. €

- 5372** 1904/09: 1 d. grey-black & carmine, 1905 printing on chalk surfaced paper, a complete unused pane of sixty (6 x 10) showing four circular Plate 1 numerals at top and at base, handstamped requisition number '1168' at upper right, generally fresh and fine, large part og. or mostly unmounted og. A rare multiple Gi = £ 720+.

22a 田*/**

200 (€ 200)

- 5373** 1904/08: The part set of ten values, wmk. Multiple Crown CA, from 2 d. - £ 1 green & violet, together with 1907/11 ½ d. and 1 d., all handstamped "SPECIMEN" diagonally in violet, probably for presentation purposes. Fresh and fine, large part og. Rare.

Provenance: Collections Porter and W.C. Hinde.

(Photo = www)

23s/32s+
33s/34s

*

300 (€ 305)



5374



5375

- 5374** 1904/08: 2½ d. grey-black & bright blue, two vertical pairs used on 1910 cover to Obuasi, Ashanti, Gold Coast tied by neat strikes of "BURUTU / SOUTHERN-NIGERIA" cds's (April 17) in black. Reverse with Forcados cds, Sekondi (April 21) transit cds's and "Obuasi / Gold Coast" arrival (April 22). A most attractive and unusual cover.
- 5375** 1904/09: £ 1 green & violet, wmk. Multiple Crown CA, on ordinary peper, an unused block of four, marginal from top of sheet showing Plate Number '1' in margin, stamps unmounted og. A rare multiple, just 1'200 stamps printed on ordinary paper Gi = £ 1'400+.
Provenance: Collection Porter.
- 5376** 1904/08: The unused collection of the issue with all ordinary and chalky papers noted, all Dies A and B indicated, complete including some additional blocks of four 1 d. (Die A), 1 s. on chalky (Die B), 5 s. (Die A) and 10 s. (Die B); the single stamps including two 10 s. and four £ 1 green & violet including a requisition number (54) corner example. A delightful reference collection in excellent quality (38 items) Gi = £ 3'000+.

Gibbons		Start price in CHF	Start price approx. €
24	✉	100	(€ 100)
32	田**	600	(€ 605)
21/32ab	田*/**	1'000	(€ 1'010)



5377

- 5377** 1909: De La Rue Die Proof for the 1 d. value, completed design with Head Die A, printed in black on glazed white card dated "30 AUG. 09" in blue and struck with "BEFORE / HARDENING" in black. Fresh and very fine.

34 Proof	(*)	250	(€ 255)
----------	-----	-----	---------



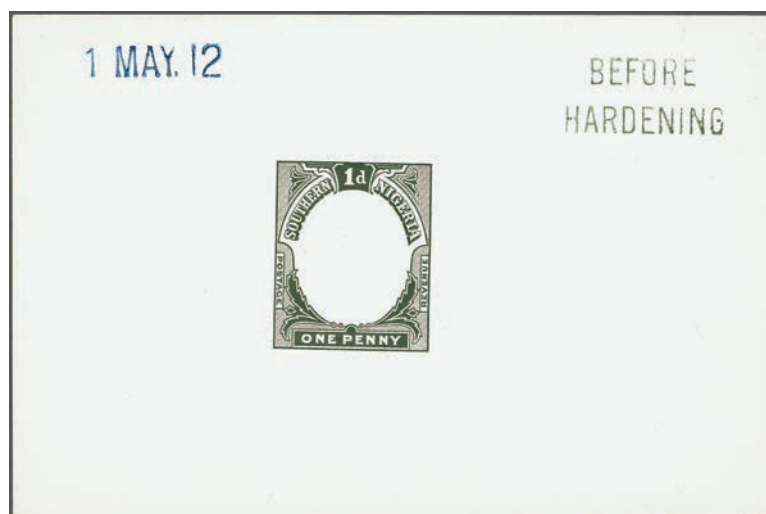
ex 5378

5380

ex 5381

ex 5383

		Gibbons		Start price in CHF	Start price approx. €
5378	1907/11: Definitive set of twelve values, Die B, wmk. Multiple Crown CA, ½ d. green to £ 1 purple & black on red, incl. Die A ½ d. and 1 d. values, Die II 1 d. and both shades of the 6 d. (16 stamps), all fresh and fine and of good colour, large part og. Gi = £ 450+.	33/44	*	180	(€ 180)
5379	1907/11: Colours Changed, the set of twelve values to £ 1 including duplication with differing Dies and shades (35 items), with twenty-five stamps from ½ d. to £ 1 complet all showing matching top marginal examples exhibiting Plate Number '1' in margin, incl. six blocks of four incl. 2 s. 6 d., fresh and very fine, large part or unmounted og. A charming group Gi = £ 650+.	33/44	田*/**	200	(€ 200)
5380	1907/11: Head Die B, £ 1 purple & black on red chalky paper, wmk. Multiple Crown CA, an unused example with Plate Number 1 in margin above, large part og. Gi = £ 250. <i>Provenance: Renato Mondolfo.</i>	44	*	120	(€ 120)
5381	1912: Definitive set of twelve values, wmk. Multiple Crown CA, ½ d. green to £ 1 purple & black on red, all overprinted SPECIMEN horizontally in black (or red on 4 d., 1 s. and 2 s. 6 d. values). Fresh colours, very fine, large part og. or unmounted og. A scarce set Gi = £ 275.	45/56 spec	*/**	140	(€ 140)
5382	1912: George V set of twelve unused, wmk. Multiple Crown CA, incl. shades of nearly all values, block of four 5 s., and the set of twelve overprinted SPECIMEN, large part og. Gi = £ 550+.	45/56+	田*	180	(€ 180)
5383	1912: Definitive set of twelve values, wmk. Multiple Crown CA, ½ d. green to £ 1 purple & black on red, fresh colours and fine, large part og. A choice set Gi = £ 250.	45/56	*	120	(€ 120)



5384


- 5384** 1912: De La Rue Die Proof for the 1 d. value, frame only, printed in black on glazed white card, dated "1 MAY. 12" in blue and struck with "BEFORE / HARDENING" in black. A fine and scarce Proof.
Provenance: Collection W.C. Hinde.

46 Proof (*) **250** (€ 255)

Gibbons

Start price
in CHF

Start price
approx. €

- 5385** 1902/12: The Cancellations and Used Collection (158 stamps or pieces and 14 covers/cards), showing Paquebot usages, 1901/02 set of nine used, 1903 piece with ½ d. pair tied by superb "NIGER TRAVELLING POST OFFICE" cds's, 1903 £ 1 green & violet used, 1904/08 6 d. on OHMS registered cover to Hull, 1907 2½ d. rate cover from Calabar to Manila, Philippines; 1 d. single frankings on covers from Sapele and Bende and on 1908 card from Onitsha; 1904/08 £ 1 green & violet used (2), scarce towns noted throughout incl. Abeokuta, Asaba, Egwannga, Onitsha, Sapele, Uyo, Warri, 1907 cover with rare usage of Lagos 1 d. cancelled by "Bonny" cds, page with Lagos issues used in Southern Nigeria (11 items), combination usages on pieces from Abeokuta, Akassa, Benin, Degema, Ibadan, Idah, Ifon, Jebu Ode, Opobo, and Warri; 1907/11 with 10 s. and £ 1 used, 1910 1 d. on cover tied Olokemeji Lagos, 1912 10 s. used (4) and £ 1 used etc. (Photo =  www)

1-56   **1'500** (€ 1'515)

5386

- 5386** 1912: Booklet sold at 2 s. with black on red covers, bearing three panes of six of the ½ d. green and two panes of six 1 d. red, complete, reverse with printed rates for the cost of Postal Orders, central crease in cover but of immense rarity Gi = £ 2'000.

SB5  ****750** (€ 760)

Postal Stationery

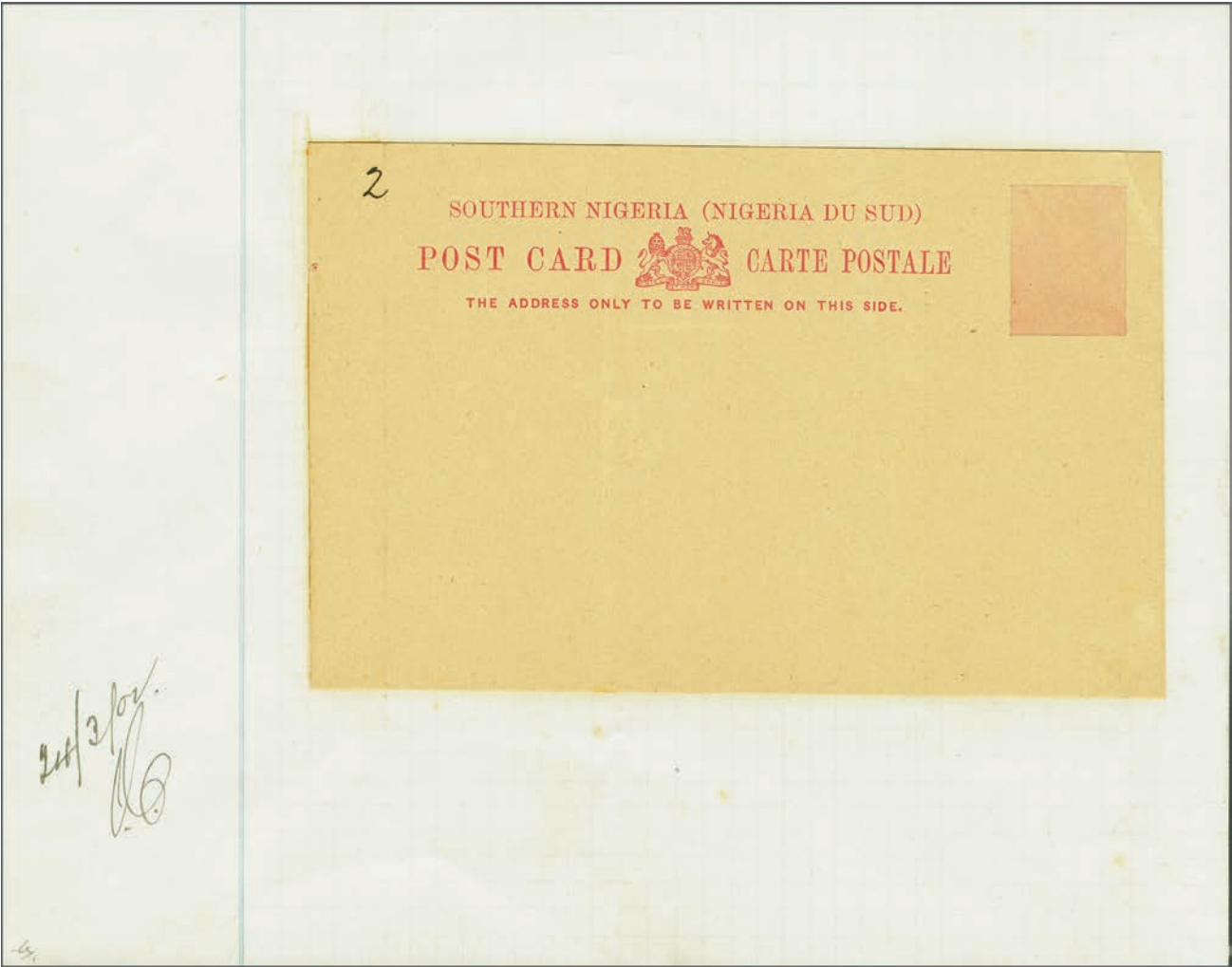


5387


- 5387** 1902: De La Rue Proof for the proposed 1 d. postal stationery envelope, embossed in vermilion oval with "★ / ONE PENNY / SOUTHERN NIGERIA POSTAGE" printed on cream thick horizontally laid paper (54 x 61 mm.). Two pinholes well away from design at upper left, unadopted and rare.
Provenance: Collection Col. J.R. Danson.

Essay (*)

400 (€ 405)



5388

		Gibbons		Start price in CHF	Start price approx. €
5388	1902: De La Rue Proof for the proposed 1 d. postal stationery card attached to lower half of DLR Appendix sheet with file date "24 March 1902" (three days after the adhesive stamps were approved) in manuscript at left, with legend "SOUTHERN NIGERIA (NIGERIE DU SUD) / POST CARD CARTE POSTALE" with coloured pink wash where the 1 d. indicia would be situated and marked '2' in manuscript ink. Unadopted, slight vertical crease but exceptional and unique.	(H&G 2) Proof	✉	850	(€ 860)
5389	1901/12: The postal stationery collection with 1901 2 d. registered envelope optd. SPECIMEN (H&G C1), 1903 1 d. red stationery cards used from "Sapele" and superb example from "Burutu" to Germany (H&G 2), 1902 2 d. registered stationery envelopes (H&G C2) each up-rated used from Lagos, 1908 ½ d. on 1 d. red cards unused and used ex Warri (H&G 4), 1912 ½ d. green card optd. SPECIMEN (H&G 5), and 1912 large 2 d. registration envelope optd. SPECIMEN (H&G C3a). (Photo =  www)		✉	120	(€ 120)

Images of most of our collections you will find on our webpage: www.corinphila.ch

Nigeria



ex 5390



5391



5392

Gibbons

Start price
in CHFStart price
approx. €

- 5390** 1914/29: Definitive set of twelve, wmk. Multiple Crown CA, all in unused blocks of four, including scarce 3 d. and 4 d. values with yellow back on thick paper (Gi. 5b and 6b), 10s. with blue-green back (Gi. 11a) and fine £ 1 deep purple and black on red; fresh and fine, large part or unmounted og. Gi = £ 1'100++.
- 5391** 1917: 10 s. green & red on blue-green with pale olive back, wmk. Multiple Crown CA, an unused block of four, corner marginal from upper right corner of the sheet, showing Plate number '5' in margin and sheet requisition number '088' in black. Choice and superb multiple, unmounted og. Rare. Cert. BPA (1968) Gi = £ 4'400+.
- 5392** 1917: Die I, £ 1 deep purple and black on red, wmk. Multiple Crown CA, an unused example, corner marginal from upper right of sheet with sheet requisition number '067' in top margin, fresh and very fine, stamp unmounted og. Signed Ferchenbauer Gi = £ 190+.

1/12 田*/**

350 (€ 355)

11b 田**

1'500 (€ 1'515)

12 **

100 (€ 100)

ex 5393



ex 5394



5395

- 5393** 1917: Die II, £ 1 deep purple and black on red, wmk. Multiple Crown CA, unused examples (2), each marginal from base of sheet, with Plate number '16' and '17' respectively in margin, fresh and fine, large part og. Scarce Gi = £ 525+.
- 5394** 1931: Die II, 1½ d. orange and 3 d. bright blue, De La Rue Imperforate Colour Trials in issued colours, fresh and fine, unmounted og. Scarce.
- 5395** 1932: Die I, 10 s. green & red on green, wmk. Multiple Script CA, an unused horizontal pair marginal from top of sheet, first stamp with Plate number '23' and second with sheet requisition number '236' in black, trace of aging but of fresh and fine appearance, one stamp unmounted og. Scarce Gi = £ 260+.

12b *

180 (€ 180)

17+ 23

Proofs **

200 (€ 200)

29a */**

100 (€ 100)



5396

5396 1936: Pictorial 3 d. blue, perf. 12½ x 13½, an unused block of four from upper right corner of the sheet showing sheet requisition number '0397' in margin, fresh and very fine, unmounted og. Scarce and most attractive Gi = £ 600+.

Gibbons	Start price in CHF	Start price approx. €
38a	田**	200 (€ 200)



ex 5397

5397 1938/51: Definitive set of fifteen values complete, an unused set all perforated by hooded SPECIMEN, fresh and fine, large part og. The 2½ d. orange was never sent to the UPU due to Wartime conditions. A scarce and attractive set Gi = £ 450.

49/59s spec	*	180 (€ 180)
-------------	---	--------------------

We accept consignments of suitable rarities and collections or entire estates for our forthcoming auctions at any time.
Please do not hesitate to contact our Philatelic Experts to discuss further details for consignments. Absolute discretion is guaranteed.