

GREAT BRITAIN

The 'KOOYONG' Collection (part II)



London General Post Office

1840/41, 1 d. black & 2 d. blue



Rowland Hill



5001

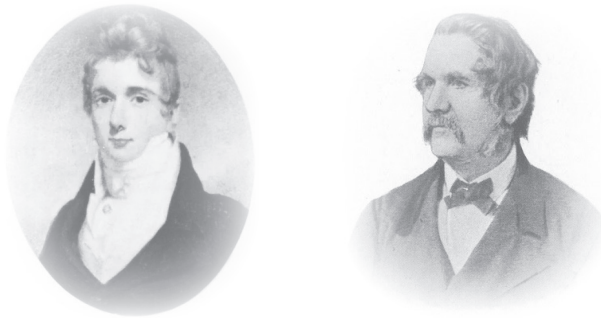


5002



5003

		Gibbons	Start price in CHF
5001	1840: 1 d. intense black, plate 5, lettered TE, unused (regummed), four good to large margins all around, lower right corner crease, of fine appearance and scarce. Cert. PTS Expertising Ltd (2015) <i>Gi AS24 = £ 18'000.</i> <i>Provenance: Christies, London, 17 September 1991, lot 621.</i>	1 (*)	1'200
5002	1840: 1 d. black, plate 1b, lettered MI, unused, with toned crackled original gum, four good to large margins all round, displaying non-coincident re-entry consistent with this position, prominent in the "OST" of "POSTAGE", some light gum staining in upper margin, trace of light thin, otherwise attractive and fine <i>Gi AS5b = £ 13'500.</i> <i>Provenance: Christies, 3 June 1994, lot 3138.</i>	2bb *	1'000
5003	1840: 1 d. grey-black, plate 3, lettered LK, unused, with part original gum, four mostly ample margins, light tone spots in places and vertical crease, but of fine appearance. Cert. Philatelic Expertising (Great Britain) Ltd (1994) <i>Gi AS21 = £ 20'000.</i> <i>Provenance: Christies, London, 3 March 1992, lot 316.</i>	3 *	750



Charles Heath and his son Frederick engraved the portrait of Queen Victoria



5004

Gibbons

Start price
in CHF

- 5004** 1840: 2 d. deep full blue, plate 1, lettered CD, unused, regummed, clear to ample margins, showing the double "D" variety, some light toning, a rare stamp unused. Cert. RPSL (2013) stating "unused" not mentioning the gum. Gi DS1j = £ 45'000.
Provenance: Grosvenor Auctions, 18 May 2006, lot 440
Grosvenor Auctions, 30/31 October 2013, lot 369

4a

*

1'500



5005



5006

- 5005** 1840: 2 d. blue, plate 1, lettered RH, unused, with part original gum, good balanced margins all around, pleasing bright shade, some light toning and central thin, but a scarce unused example of otherwise fine appearance Gi DSS = £ 38'000.
Provenance: Collection Ernest Dale, Stanley Gibbons, 10-11 June 1969, lot 68.
- 5006** 1840: 2 d. pale blue, plate 1, lettered RK, unused (regummed), mostly clear to good margins, barely touched at lower right, delicate shade, traces of toning mostly confined to upper and right margins, a challenging stamp unused Gi DS6 = £ 45'000.

5

*

1'500

6

(*)


1'500

1841, 1 d. red



5007

5007 1841: 1 d. red brown, plate 8, lettered CG, printed from the "black" plates, unused, with part original gum, four mostly ample margins all around, fresh rich colour, small corner flaw confined to upper left margin, otherwise fine and scarce Gi AS51 = £ 11'000.

5008 1841: 1 d. red, group of four singles, positions OC, HE, EC, and GH, mostly four good or better margins and with part original gum, illustrating various shades including examples from the red-brown, red-brown on very blued paper, pale red-brown, and deep red-brown groupings, position EC being from the worn plate (cert. Brandon, 2002) and showing Ivory Head impression, the odd small flaw, chiefly fine Gi = £ 2'875. (Photo =  www)

Gibbons		Start price in CHF
7	*	1'000
8/10	*	400

1841/52, 2 d. blue



5009



5010

5009 1841/51: 2 d. pale blue, lettered PK, unused, with part original gum, mostly large margins all around, pleasing bright colour, trivial tone spot at upper right corner noted for strict accuracy, otherwise fine Gi = £ 7'500.

5010 1841/51: 2d. blue, lettered RG, unused, with part original gum that has been somewhat toned, chiefly ample to good margins, good colour, fine Gi = £ 5'000.

13	*	800
14	*	500



5011

5011 1841/51: 2d. deep full blue, lettered SJ, unused, with part original gum, margins generally close to touching in places, large at top, striking deep shade, very good Gi ES12 = £ 6'500.

Provenance: Collection "Continental Philatelist", Stanley Gibbons, 16/17 November, 1972, lot 456, as a reconstituted strip of four, from which this stamp was the right-most example Spink London, 11 June, 1997, lot 132, also as a reconstituted strip Grosvenor, 11-12 November, 2010, lot 480, as a single stamp.

15	*	500
----	---	-----



The printing presses used by Perkins Bacon



5012

Gibbons

Start price
in CHF

5012 1851: 2 d. violet blue, plate 4, lettered EH, the early stages of the shade with slight sign of lavender tint, unused, with part original gum, good to large margins on all sides, vivid colour and fresh appearance, a fine and most attractive example of this great rarity. Cert Brandon (2007) Gi Spec. ES16 = £ 9'000.

Provenance: Harmers Rarity Auction, December 15, 1993, lot 1115, as a horizontal pair EH-EI Harmers, May 9, 1995, lot 154, as a horizontal pair with Philatelic Expertising Cert. (1994)

"Wellington", Galerie Dreyfus, Basel, 6-19 June, 2011, lot 3599, as a single stamp.

15aa

*

1'200

1841, 1 d. red



5013

5013 1841 (April): 1 d. red brown, plate 11, on Dickinson silk thread paper, unused, four clear to ample margins, rich colour, trivial thin spot in corner, an otherwise fine example of this unissued trial printing and of considerable rarity in this quality. Cert RPSL (2010) Gi = £ 4'750.

Remark: All recorded copies originate from one un gummed part sheet AA-QL. This sheet was found in 1881 in the Estate of Rowland Hill, was exhibited in London in 1881 and shortly afterwards split up.


16

(*)

2'000

1854/57, 1 d. red and 2d. blue perforated 14/16

5014 1854/57: 1d. red-brown, wmk. Small Crown, perf. 16, two unused singles, Die I with part original gum, Die II without gum, each of good colour, with 1d. yellow-brown, Die I, with part original gum, fine Gi = £ 1'325.

(Photo =  www)

17+18+21

*/(**)

180




5015



5016



5017

		Gibbons	Start price in CHF
5015	1854: 2 d. deep blue, Plate 4, lettered FC, perf. 16, unused, with somewhat sweated gum, fresh colour, lower left corner crease, else fine and scarce $G_i = \text{£ } 4700$.	19	* 500
5016	1854 (March 1): 2d. pale blue, Plate 4, lettered QJ, perf. 16, unused, pleasing light shade showing signs of plate wear, well centred for this difficult issue, trivial gum stain shows through slightly at right, fine appearance. Cert. RPSL (2025) $G_i F1(2) = \text{£ } 5'500$.	20	(*) 750
5017	1855 (Aug 18): 2 d. blue, Plate 5, lettered DI, perf. 16, unused, vibrant colour, repaired perf. at lower right and small surface indentation at top right, otherwise of fine appearance - a very rare stamp unused. Cert. RPSL (2025) $G_i F4 = \text{£ } 10'000$. <i>Provenance: E. Mohrmann Auction, Hamburg, 13/15 Dec 1956, lot 846.</i>	20a	(*) 1'000
5018	1854/57: 1 d. red-brown, Die I, wmk. Small Crown, perf. 14, lettered CH, on blued paper unused; 1 d. red-brown, Die II, lettered BH from plate 15 unused (cert. RPSL, 2008); and 1 d. deep red-brown on blued, Die II, lettered PD from plate 18 (cert. RPSL, 2008), unused; all of good colour and fresh appearance; regummed or part og. Scarce $G_i = \text{£ } 2'750$. <i>(Photo =  www)</i>	22+24+24a	*/(*) 500



5019



5020

5019	1855: 2 d. blue, plate 4, wmk. Small Crown, lettered CA, unused, centred to the lower left, a scarce stamp, fine $G_i = \text{£ } 13'000$.	23	(*) 1'200
5020	1855 (Feb 22): 2 d. blue, plate 4, wmk. Small Crown, lettered QK, perf. 14, unused, regummed, well centred for this issue, discoloured perfs., but a very scarce stamp unused. Cert. RPSL (2025) $G_i F2(1) = \text{£ } 13'000$.	23	(*) 600



5021

5021	1855 (July 24): 1 d. red brown, Die II, lettered JB, wmk. Large Crown, perf. 16, unused, regummed, centred to the upper left, good colour, some stained perfs., otherwise fine, a scarce stamp unused. Cert. RPSL (2025) $G_i C5(1) = \text{£ } 2'500$.	26	(*) 300
-------------	--	----	----------------



5022

Gibbons

Start price
in CHF

- 5022** 1855: 2 d. blue, plate 5, Die I, lettered CE, wmk. Large Crown, perf. 16, unused without gum, quite well centred for this issue and of overall good colour, some perforations lightly discoloured, a most appealing example of this scarce stamp. Cert. RPSL (2011) $G_i = \text{£ } 18'500$.

Provenance: Collection H.C.V. Adams, Robson Lowe, Feb 1956, lot 368

Collection Ernest Dale, Stanley Gibbons, June 10-11, 1969, lot 140.

- 5023** 1854/57: 1 d. selection of four singles, lettered FE, CK, OA, and OG, wmk. Large Crown, perf. 14, unused, some with part original gum, noted examples of the red-brown, brick-red, brown-rose, and orange-brown shades, a fine group for the specialist $G_i = \text{£ } 1'715$. (Photo = www)

27 (*)

1'500

29+30

+32+33 */(*)

250

5024



5025

- 5024** 1855: 2 d deep blue, plate 6, lettered JG, wmk. Large Crown, perf. 14, unused, with part disturbed original gum, centred to the left, traces of light soiling at right, a challenging stamp, fine. Cert RPSL (1984) $G_i = \text{£ } 2'800$.

35

*

350

- 5025** 1857: 1 d. rose red, Die II, lettered OF, wmk. Large Crown, perf. 16, unused with vivid fresh colour, the odd lightly toned perf at top, centred to base, fine $G_i = \text{£ } 2'800$.

36

(*)

400

5026



5030

- 5026** 1858: 2 d. blue, plate 6, lettered MK, wmk. Large Crown, perf. 16, unused, with part original gum, centred to the lower left, striking deep shade, a scarce stamp, fresh and fine $G_i = \text{£ } 14'500$.

Provenance: Ross-Hurst Collection, R. Lowe (6 July 1955), lot 341

R. Lowe (10 May 1966), lot 268

36a

*

1'500

1858/79, 1 d., 1½d. and 2d. with plate numbers

- 5027** 1856/61: 1 d. red shades, six singles, wmk. Large Crown, perf. 14, unused, most part original gum, with examples in red brown, pale red, pale rose red, rose red, and deep rose red, the last with colour somewhat affected by storage, as well as 1861 Die II, Alphabet IV, 1d. rose red, chiefly fine $G_i = \text{£ } 3'665$. (Photo = www)

37/42 */(*)

400

- 5028** 1858/79: 1 d. and 2 d., letters in all four corners, wmk. Large Crown, perf. 14, with 1 d. rose red and lake red (pl. 209) and 2 d. blue thick lines (pl. 9) and thin lines, and deep blue, thin lines (pl. 13), all unused, most with part original gum and of fresh colour, the odd typical small flaw, chiefly fine $G_i = \text{£ } 1'154$. (Photo = www)

43/47

*

150

- 5029** 1870/79: ½ d. rose-red (plate 15) and rose (plate 10), wmk. "half penny", perf. 14, with 1½ d. rose-red and lake-red (plate 3), watermark Large Crown, unused, the lake-red without gum, very good to fine $G_i = \text{£ } 1'320$. (Photo = www)

48-52

*

175

- 5030** 1870/74: 1½ d. rose-red, plate 1, OP-PC error of lettering, wmk. Large Crown, perf. 14, unused (regummed), centred to left, lightly toned and with small imperfections, but a fine appearing example of this rare and desirable error $G_i = \text{£ } 20'000$.

Provenance: Harmers, January 18-19, 1965, lot 63

Phillips, June 9, 1994, lot 425

Collection "Golden", Grosvenor, November 9, 2015, lot 138.

53

(*)

1'800

1847/54, Embossed issues



5031



John Dickinson inventor of a continuous mechanised papermaking process

		Gibbons	Start price in CHF
5031	1847: Embossed 1 s. pale green, Die II, cut square, with good to large margins all around, unused, with large part original gum, quite fresh, a rare stamp, particularly with such margins, fine. Cert. Brandon (1993) Gi = £ 24'000. Provenance: Stanley Gibbons (26/27 March 1998), lot 599	54 *	4'000



5032



5033

5032	1847: Embossed 1s. green, Die I, cut square, margins close to touched in places, unused, with part original gum, repaired at right with green slightly repainted, yet a scarce stamp of overall fine appearance. Cert. Raybaudi (2004) Gi = £ 24'000.	55 *	1'000
5033	1847/54: Embossed 6 d. dull lilac unused, no gum, showing portion of "V" of VR watermark reversed, cut square, margins touched on two sides, clear at base and at left, of fresh colour, nevertheless a very fine example of this rare stamp. Cert. RPSL (2025) Gi H3(2)=£ 19'500.	59 (*)	1'000

1855/1900, Surface Printed



5034



5035

		Gibbons		Start price in CHF
5034	1855/57: 4 d. deep carmine, no corner letters, wmk. Small Garter, on deeply blued paper, unused, with large part original gum, centred to base, good colour, a pleasing example of this difficult stamp, fine Gi = £ 8'500.	62	*	600
5035	1856: 4 d. carmine, no corner letters, wmk. Medium Garter, on thick blued glazed paper, unused, with large part original gum, centred to right, small internal creases and other imperfections, but of very good appearance, a scarce stamp Gi = £ 14'000.	63	*	1'200



5036



5037

5036	1856: 4 d. pale carmine, no corner letters, wmk. Medium Garter, on thin white paper, unused, centred to lower left, delicate shade but somewhat toned and soiled with minute thin spot at top, good to fine, a scarce stamp unused. Cert. RPSL (2025) Gi = £ 13'000.	64	(*)	1'000
5037	1856 (Nov 1): 4 d. rose, no corner letters, wmk. Medium Garter, on ordinary white paper, printed with specially prepared ink, unused, centred to upper left, minor surface soiling and a few stained perfs. at base but a rare unused example of good appearance. Cert. RPSL (2025) Gi J50(1) = £ 13'000.	65	(*)	1'000





5038

5038	1857: 4 d. rose carmine, no corner letters, wmk. Large Garter, on ordinary white paper, unused with part original gum, centred to lower left, fresh colour, very good to fine Gi = £ 2'100.	66	*	300
5039	1856: 6 d. deep lilac and pale lilac, wmk. Emblems, unused (one regummed, the other crudely rebacked), the deep lilac with superior centering to what is often found for these difficult issues, a useful reference Gi = £ 2'700. (Photo = www)	69+70	(*)	350
5040	1856/57: 1 s. green shades, three singles, wmk. Emblems, unused, examples in deep green, green, and pale green, typical centering and of mostly fine colour, small flaws, but a useful and scarce trio showing the three Gibbons listed shades Gi = £ 12'250. (Photo = www)	71+72+73	*/(*)	850
5041	1862/64: 3 d. shades, unused group of three, small uncoloured corner letters, wmk. Emblems, with JC in deep carmine-rose, FG in bright carmine-rose, and SC in pale carmine-rose, some questionable gum and the odd small flaw, but a fine-appearing group, scarce unused Gi = £ 10'200. (Photo = www)	75+76+77	*/(*)	600



5042

		Gibbons	Start price in CHF
5042	1862: 3 d. rose, wmk. Emblems, plate 3 with white dots, lettered CA, unofficial line perforated 14, unused, with large part original gum which has been somewhat disturbed, vertical bend and some shorter perforations as often found, of little importance given the rarity of this otherwise fine stamp, one of thirty eight recorded examples. Certs BPA (1902), (2011) $G_i = \text{£ } 35'000$ <i>Provenance: Collection Ernest Dale, Stanley Gibbons, June 10-11, 1969, lot 245 Phillips, September 2, 1993, lot 334a.</i>	78 *	3'000
5043	1862/64: 4 d. shades, small uncoloured letters, KK, DB, OD, and GA, wmk. Large Garter, unused, with bright red and pale red examples, both with and without hairlines, the odd small flaw, but a useful quartet of chiefly fine appearance $G_i = \text{£ } 8'600$. (Photo =  www)	78/82 */(*)	800
5044	1862/64: 6 d. lilac and deep lilac, three unused singles, wmk. Emblems, showing both shades as well as a second 6 d. lilac plate 4 example showing hairlines, colours overall quite fresh, a couple small flaws, otherwise a fine group, uncommonly found unused. Cert. RPSL (S.G. 85) $G_i = \text{£ } 8'050$. (Photo =  www)	83/85 (*)	850



5045



5046

5045	1862: 9 d. bistre, plate 2, wmk. Emblems, lettered LA, unused without gum, centred to the lower left, fresh colour and overall pleasing appearance, fine $G_i = \text{£ } 5'800$.	86 (*)	500
5046	1862/64: 9 d. straw, lettered LF, wmk. Emblems, unused, with redistributed gum, centred to the top, pleasing fresh colour, a fine and scarce stamp $G_i = \text{£ } 4'000$.	87 (*)	400



Major K. M. Beaumont



Dr. Douglas Latto



5047

Gibbons

Start price
in CHF

5047 1862: 9 d. bistre, plate 3, with hairlines, lettered EJ, wmk. Emblems, unused, with sweated gum, centred to the upper right, various imperfections including a repaired pinhole and light soiling, but of great rarity, believed one of approximately a dozen examples recorded; a stamp that has graced many famed collections of the past. Cert PTS Expertising Ltd (2015) Gi = £ 32'000.
Provenance: Harmer Rooke, December 5/6, 1930, lot 134
Robson Lowe, December 5, 1951, lot 313
Collection Beaumont, Robson Lowe, December 7/8, 1965, lot 257
Collection Sugden, Harmers of London, May 21-3, 1951, lot 726
Collection Dr. Latto, Phillips, October 1992, lot 72.

88 * **4'000**



5048



5049

5048 1862: 1 s. deep green, lettered JK, wmk. Emblems, unused, adhesions on reverse, various perf imperfections and small mark near "ONE", fresh colour, a presentable example of this scarce stamp Gi = £ 4'800.

5049 1862: 1 s. green, lettered IA, wmk. Emblems, unused, large part original gum, pleasing deep shade and well centred for this issue, scarce and fine. Cert. Brandon (1992) Gi = £ 3'200.
Provenance: Collection Dauer, Spink, London, 14 April 2014.

89 (*) **300**

90 * **500**



Perforating the stamps



5050

Gibbons

Start price
in CHF

- | | | | | |
|-------------|--|-------|-------|---------------|
| 5050 | 1862: 1 s. deep green, "Abnormal" plate 2 (= 3), lettered EA, wmk. Emblems, unofficially line perforated 14, unused, with small part original gum, a fine example of this difficult stamp, the history and origins of which continue to be a subject of much debate among specialists, one of seven such examples recorded by Galland/Louis. Cert. RPSL (2015) as a genuine S.G. Spec J102 <small>Gi = £35'000.</small>
<i>Note: The 1s. deep green offered here displays similar line perforations to that of the 1862 3 d. rose, which is believed to have been perforated in the 1890's by an official at Somerset House. Accordingly, the status of this stamp is the matter of some conjecture, though the recording of only seven examples by Galland and Louis attest to its scarcity. One example, lettered AA, is in the Royal Collection.</i> | 91 | * | 15'000 |
| 5051 | 1865/67: 3 d. through 6 d. selection of six singles, wmk. Large Garter (4 d.) or wmk. Emblems, unused, some part original gum, includes 3 d. rose plate 4, 4 d. dull vermilion, 4 d. vermilion and 4 d. deep vermilion, 6 d. deep lilac, and 6 d. lilac with hyphen, the odd small imperfection, but chiefly of good colour and fresh appearance, fine <small>Gi = £ 7'475.</small>
<i>(Photo = www)</i> | 92-97 | */(*) | 1'000 |



5052

- | | | | | |
|-------------|---|----|---|------------|
| 5052 | 1865: 9 d. straw, plate 4, lettered QA, wmk. Emblems, unused, with part original gum, centred to the upper left, deep colour, a few shorter perfs at upper right, otherwise fine <small>Gi = £ 4'800.</small> | 98 | * | 600 |
|-------------|---|----|---|------------|

The 10d., plate 1, ERROR OF WATERMARK

The first 10d Error of Watermark was discovered in 1892 by the German collector J.H. Anhiesser from Düsseldorf. It can be assumed, that only one sheet was printed on the wrong watermark "Emblems" paper. The distribution to the Post Offices were in panes of 20 (not in sheets of 240). All recorded letterings from the left half of the sheet were used in London. All recorded letterings from the right half of the sheet were used in Constantinople.



George H. Worthington



5053



Gibbons

Start price
in CHF

- 5053** 1867 (Nov 11): 10 d. red brown, plate 1, lettered LJ, **Error of Watermark:** wmk. Emblems rather than Spray of Rose, struck with "C" in oval grid cancellation of Constantinople, rich colour, an exceptional rarity, one of only fourteen examples recorded, all of which are used. Cert. Brandon (1987) Gi = £ 55'000.
Remark: The stamp LJ was discovered by I.J. Bernstein in 1909. It was soon acquired by George H. Worthington for a price unknown.
Provenance: Collection Calvert, July 1920, lot 520
Collection "Isleham", Christies Robson Lowe, New York, 11 March 1987, lot 2022
Grosvenor Auctions, 15-16 November 2018, lot 690.

99

18'000



5054

		Gibbons	Start price in CHF
5054	1865: 1 s. green, plate 4, wmk. Emblems, lettered HK, unused, centred to lower left, some soiled perforations but of bright colour. Cert. RPSL (2025) Gi J103 = £ 2'850.	101 (*)	200
5055	1867: 3 d. deep rose plate 6, and 3 d. rose, plate 5, lettered PF and CB respectively, wmk. Spray of Rose, unused, PF small part og., CB regummed, however a fine appearing duo Gi = £ 1'325. (Photo = www)	102+103 */(*)	150
5056	1867/68: 6 d. shades, group of six, with hyphen, plate 6, lettered LK (2), FA, and BH, and without hyphen lettered IB and PK, plate 8, wmk. Spray of Rose, unused, showing the listed shades of lilac, deep lilac, purple, bright violet, dull violet, and mauve, typical centering, some with questionable gum, the lilac shade somewhat discoloured, the bright violet and mauve with small repairs, however a useful reference Gi = £ 9'700. (Photo = www)	104/109 */(*)	1'000



5057



5058

5057	1867: 9 d. straw, plate 4, lettered PK, unused, with part original gum, good colour and well centred for this issue, fine Gi = £ 2'400.	110 *	250
5058	1867: 9 d. pale straw, plate 4, lettered GA, unused, part original gum, true light shade, fresh and fine Gi = £ 2'400.	111 *	300



5059

5059	1867: 10 d. red brown, pale red brown, and deep red brown, plate 1, lettered EE, KJ, and OK, wmk. Spray of Rose, unused, most part original gum, a few small imperfections, EE reperfornated, else a very good trio displaying the three listed shades of this denomination Gi = £ 12'200.	112+ 113+114 */(*)	1'000
-------------	--	-----------------------	--------------



ex 5060

5060	1867/71: 1 s. deep green and green, plate 5, lettered OL and OF, wmk. Spray of Rose, unused, part original gum, each of fresh colour, typical centering, very good Gi = £ 2'100.	115+117 *	250
-------------	--	-----------	------------



5061



5062



5063

Gibbons

Start price
in CHF

- 5061** 1867 (July 1): 2 s. dull blue, lettered GL, wmk. Spray of Rose, part original gum, fresh colour, the odd shorter perf at foot mentioned for strict accuracy, an otherwise fine example of this scarce stamp
Gi = £ 4'500.
- 5062** 1867 (July 1): 2 s. deep blue, lettered NG, wmk. Spray of Rose, unused, large part original gum, centred to the right, fine, a scarce unused example Gi = £ 5'000
- 5063** 1867 (July 1): 2 s. pale blue, lettered FD, wmk. Spray of Rose, unused, with unmounted original gum, pleasing pastel shade, reperf at right, otherwise fine Gi = £ 5'000.

118

*

500

119

*

600

120

**

600

5064



- 5064** 1867 (July 1): 2 s. Cobalt, lettered QC, wmk. Spray of Rose, unused, with part original gum, centred to the upper right, with a few shorter perfs at top, an otherwise fine example of this elusive shade, one of the key stamps of the Surface Printed issues. Cert RPSL (1950) Gi = £ 30'000.
Provenance: Collection Phillips, 2 Nov. 1989, lot 140
"Golden", Grosvenor, 9 Nov 2015, lot 269.

120a

*

4'000

5065

*Dr. Douglas Latta*

- 5065** 1867 (July 1): 2s. milky blue, lettered OA, wmk. Spray of Rose, unused, with part original gum, bright delicate colour, a fine and attractive example of this rare shade. Cert. RPSL (1959). Gi = £ 24'000.
Provenance: Collection Dr. Latta, Phillips, October 1992, lot 24
Harmers Rarity sale, 15 Dec 1993, lot 1126
Collection Dauer, Spink London, 14 April 2014, lot 24.

120b

*

3'500



ex 5066



5067

- 5066** 1872 (April 12): 6 d. deep chestnut, 6 d. chestnut, plate 11 and 6 d. pale buff, plate 12, lettered LJ, TF, and BF respectively, wmk. Spray of Rose, unused, each of good colour, some with sweated gum, an ideal shade reference, chiefly fine $G_i = \text{£ } 5'500$.
- 5067** 1873 (April 24): 6 d. grey, plate 12, wmk. Spray of Rose, lettered JL, an unused example, centred to lower left, somewhat heavily mounted original gum, fine $G_i = \text{£ } 1'900$.

Gibbons		Start price in CHF
122+		
122a+123	*	500
125	*	300



5068



5069

- 5068** 1867 (July 1): 5 s. rose, plate 2, lettered BC, wmk. Maltese Cross, perforated $15\frac{1}{2} \times 15$, unused, centred slightly to the left, of good colour and fine. Cert. RPSL (2025) $G_i = \text{£ } 9'500$.
- 5069** 1867 (July 1): 5 s. pale rose, plate 1, lettered DF, wmk. Maltese Cross, perforated $15\frac{1}{2} \times 15$, unused, with part sweated original gum, well centred, some light overall paper toning and slight surface rub, otherwise fine $G_i = \text{£ } 9'500$.

126	(*)	900
127	*	850



5070

- 5070** 1868 (September 26): 10s. greenish grey, plate 1, lettered CG, wmk. Maltese Cross, perforated $15\frac{1}{2} \times 15$, unused (carefully regummed), centred to foot, fine colour and appearance, extremely rare $G_i = \text{£ } 50'000$.
*Provenance: Harmers, 27 March 1996, lot 768
 Christies, 3 June 1994, lot 3278.*

128	(*)	5'000
-----	-----	--------------



5071

Gibbons

Start price
in CHF

5071 1878 (September 26): £ 1 brown lilac, plate 1, lettered GE, wmk. Maltese Cross and marginal line, perforated 15½ x 15, part original gum, centred to the left, patches of toning, two horizontal bends, not noted on accompanying certificate, and other small imperfections, but a stamp of great rarity. Cert BPA (2000) Gi = £ 75'000
Provenance: Grosvenor Auctions, 9 Feb 2000, lot 202.

129

*

10'000



5072

Gibbons

Start price
in CHF

5072 1882 (December): £ 1 brown-lilac on blued paper, plate 1, lettered DE, wmk. Large Anchor, perforated 14, unused, without gum, nicely centred, a few small spots of toning, with colour somewhat faded due to treatment to reduce staining and horizontal crease, of fine appearance, and of remarkable rarity. Cert. PTS Expertising Ltd. (2014) *Gi* = £ 140'000.

Provenance: Collection Per Gjerding, Harmers, 16-17 Jan 1956, lot 228

Stanley Gibbons, 7-9 June 1972, lot 781

Collection Chartwell, Spink, London, 4 June 2012, lot 525.

132

(*)

18'000

5073

5073 1882 (November 25): 5 s. rose on white paper, plate 4, lettered BG, wmk. Large Anchor, perforated 14, unused, some uniform toning and light spots of soiling, otherwise a well centred and fine example of this stamp: very rare unused. Certs. RPSL (1998, 2025) *Gi* J123a = £ 28'000.

134

(*)

2'750



5074

Gibbons

Start price
in CHF

- 5074** 1883 (February): 10 s. greenish-grey on white paper, lettered BB, wm. Large Anchor, perforated 14, unused, superior centering and vivid fresh colour, light bend noted for strict accuracy, with redistributed original gum and some unapparent soiling to perfs. An attractive example of this world rarity, with only a very small number of unused examples recorded - one of the key stamps of Great Britain. Cert Raybaudi (1993) and Brandon (2004), RPSL (2025) Gi = £ 130'000.
*Provenance: Collection J. de R. Phillip of Rugby, Robson Lowe, 4 Nov 1959, lot 242
 Robson Lowe Diamond Jubilee Auction, 8 May 1980, lot 22
 Phillips, 3 Dec 1987, lot 360; David Feldman, 1-6 Nov 1993, lot 10059.*

135

*

25'000



5075

		Gibbons		Start price in CHF
5075	1882 (March 21): £ 5 orange on white paper, plate 1, wmk. Large Anchor, lettered AE, an unused example with very lightly mounted original gum, centred to foot, vivid colour, a pleasing example of this scarce stamp. Cert. Philatelic Foundation (1977) Gi = £ 10'000.	137	*	2'400
5076	1873/80: 2½ d. to 1 s. selection of ten, large coloured corner letters, most with part original gum, wmk. Anchor with 2½ d. in rosy mauve on blued paper and white paper, wmk. Orb with 2½ d. rosy mauve and blue, wmk. Spray of Rose in rose and pale rose, both wing margin examples, as well as 6 d. deep grey and grey and 1 s. deep green and green, the odd small flaw or toned perf, mostly fine Gi = £ 6'425.	138/150	*	800

The 1875, 2 ½d., LH-FL Error of Lettering

Great Britain.—It is not often that Messrs. De La Rue & Co. make a mistake, and, when they do trip, it may be years before the error is discovered, in spite of the many pairs of sharp eyes (naked or otherwise) that are studying plate numbers, corner letters, &c. Plate 2 of our 2½d. was registered so long ago as March, 1875, and it is only in 1894 that an error of lettering has been discovered, and the discovery was made on the other side of the Atlantic. We were told of this variety a few weeks ago, and hoped, for the credit of our country, that it might turn out to be a "fake"; but, alas! examination of the registered sheet at Somerset House has revealed the fact that a stamp does exist upon it with the letters "L.H." in the upper corners and "F.L." in the lower! To err is human, and even our great stamp providers are not superior to the weaknesses of human nature.

Extract from "Stanley Gibbons Monthly Journal" 30 November 1894, page 67



5077

5077	1873-89: 2½ d. rosy mauve on white paper, Error of Lettering LH-FL for LH-HL, plate 2, wmk. Small Anchor, unused, without gum, centred to the lower right, as with most examples which are typically found off centre, extremely rare and desirable, and one of the most recognizable errors of this period The Karl Louis Card Index has recorded only five unused "Error of Lettering". Gi = £ 28'000. Provenance: R. Lowe, 26 Febr. 1969, lot 1222 Dr. Douglas Latto Collection, Phillips, Oct. 1992, lot 368	140	(*)	4'500
------	--	-----	-----	-------

The "Abnormal" 1873, 6d. pale buff, plate 13

LE VIEUX-NEUF.—This was the title of a column in *Le Timbrophile*, in which M. Mahé was wont to describe discoveries of obsolete stamps, and their varieties. Our contemporary, *The London Philatelist*, has evidently, in its number for January, imagined that it was doing a similar thing in announcing under the head of Great Britain (page 18), a copy of plate 13 of the 6d. (see also *L. P.*, vol. ii. p. 99), printed in light buff, and giving the credit of the discovery to Mr. H. Hilckes, who, by the way, at p. 57 of his own Catalogue, records it as having been already discovered. But a slight mistake has been made here, which, as the history belongs to a period anterior to the birth of the *L. P.* we will endeavour to explain.

This variety was first disinterred by the late Mr. Firth, who sent the specimen to Mr. A. H. Wilson, for examination. It was duly perforated and post marked, and bore the letters $\begin{matrix} A-F \\ F-A \end{matrix}$, being printed in light buff, similar to that in which plate 12 was printed, till the colour of the impression was altered to olive-grey. Mr. W. E. Jeff shewed the specimen at the exhibition of the London Philatelic Society, in 1890, to many who were present; and it was described by him in *Stanley Gibbons' Monthly Journal* for September, 1890, and was also chronicled in the *Philatelic Record* for June of that year. On enquiry, it was clear that the specimen must have come from one of the surplus sheets struck in buff for the registration of the plate, 21.12.72; but which was not put to press for general use till December, 1873, before which time the colour of the sixpence had been altered to olive-grey. Besides Mr. Firth's copy another has been since reported, and now a third is reported as a *discovery!* We should not have referred to this had we not received letters on the subject from more than one philatelist, expressing astonishment that the announcement should have been made of a discovery in 1895 of a stamp the history of which dates from 1890.

"*The Philatelic Record*", February 1895, page 56



5078

Gibbons

Start price
in CHF

- 5078** 1873 (March 15): 6 d. pale buff, plate 13, "Abnormal", lettered TJ, wmk. Spray of Rose, cancelled with "447" obliterator of Leeds in black, as are the vast majority recorded, typical centering, repaired, but a presentable example and rare, with just forty nine examples recorded, most of which are used in Leeds Gi = £ 25'000.

Provenance: Collection H. Reck, Phillips, 2 Feb 1993.

145

3'500



5079

		Gibbons	Start price in CHF
5079	1880 (October 14): 1 s. orange-brown, plate 13, lettered PH, wmk. Spray of Rose, wing-margin, unused, with part original gum, repaired thin at upper right, nicely centred and fresh appearance, a pleasing stamp with tremendous visual appeal <i>Gi</i> = £ 4750.	151	* 800



5080



5081



5082



ex 5083

5080	1877 (March 12): 4 d. sage green, plate 16, wmk. Large Garter, lettered EE an unused example, with part original gum, particularly well centred for this issue, vibrant colour, fresh and fine <i>Gi</i> = £ 1'400.	153	* 250
5081	1880 (August 15): 4 d. grey-brown, plate 17, lettered BA, wmk. Large Garter, unused, with part original gum, centred to left, fine <i>Gi</i> = £ 2'800.	154	* 350
5082	1876 (Sept 11): 8 d. orange, plate 1, wmk. Large Garter, unused, with part original gum, centred to the lower right, fine <i>Gi</i> = £ 1'850.	156	* 250
5083	1880/3: 2½ d. blue to 1 s. orange-brown, wmk. Imperial Crown, unused, with part original gum, chiefly fresh colours, the 1 s. particularly well centred, the odd small flaw, but an overall fine group <i>Gi</i> = £ 2'550.	157+ 158+160+ 161+163	* 300



ex 5084

5084	1883 (Jan 1): 3 d. on 3 d. and 6 d. on 6 d. lilac surcharges, wmk. Imperial Crown, unused, part original gum, good colour and nicely centred, fine <i>Gi</i> = £ 1'325.	159+162	* 180
5085	1880/81: ½ d. to 5 d., group of seven, wmk. Imperial Crown, unused, mostly part original gum, including the 2 d. deep rose shade, overall fresh and fine <i>Gi</i> = £ 1'845. (Photo = www)	164/169	* 250
5086	1881: 1 d. group of six, unused, part to large part original gum, with Die I 1 d. lilac and pale lilac, and Die II lilac, bluish lilac (this with photocopy of BPA certificate for the block of twelve from which it originates), deep purple, and mauve, all bright colours, fine <i>Gi</i> = £ 933. (Photo = www)	170/174	* 120



5087



5088



J.B. Seymour



Dr. Douglas Latto

Gibbons

Start price
in CHF

- 5087** 1883 (July 2): 2 s. 6 d. lilac on blued paper, lettered GC, wmk. Large Anchor, unused, with part original gum, well centred, light vertical crease and bend, otherwise of fine appearance Gi = £ 6'000.
Provenance: Charles Nissen stock, Stanley Gibbons, 28-29 Sept 1978, lot 416
Phillips, 13-14 June 1979, lot 341.

175

*

700

- 5088** 1884 (April 1): 5 s. rose on blued paper, lettered NG, wmk. Large Anchor, unused with large part original gum, centred slightly to the left, good perforations and of fresh colour, a very fine example of this rare stamp, which has graced many noteworthy collections. Cert BPA (1970) Gi = £ 12'500.
Provenance: Collection Seymour; Robson Lowe, 29 Oct 1952, lot 477
Collection Laycock, Robson Lowe, 18 March 1953, lot 537
Harmer Rooke, 19-20 Feb 1959, lot 269
Collection Dr. Latto, Phillips, Oct 1992, lot 565
Collection Dauer, Spink, London, 14 April 2014, lot 48.

176

*

3'000

5089

- 5089** 1884 (April 1): 10 s. ultramarine on blued paper, lettered MB, wmk. Large Anchor, unused, with lightly mounted original gum, brilliant colour, a rare stamp. Cert RPSL (1963) Gi = £ 40'000.
Provenance: Stanley Gibbons, 1 March 1991, lot 257
Collection Layton, Stanley Gibbons, 9 March 1995, lot 1384
Collection Bill Gross, Shreves Philatelic Galleries, 11 June 2007, lot 166.

177

*

10'000



Inside the General Post Office in London



5090

Gibbons

Start price
in CHF


5090 1884 (May): 10 s. ultramarine on blued paper, lettered FB, wmk. Large Anchor, unused with part sweated original gum, delicate shade, negligible mark in left margin and toned gum, of little importance given the tremendous rarity of this key stamp, which was missing from many noteworthy collections of the past. Certs. Brandon (2018 - as cobalt), RPSL (2025 - as ultramarine) Gi K13(1) = £ 40'000.

177a

*

10'000

5091 1883/84: 2 s. 6 d. lilac and 2 s. 6 d. deep lilac on white paper, lettered HB and BB respectively, wmk. Large Anchor, unused, part original gum, HB particularly lightly mounted, BB centred slightly to the right, a fine duo Gi = £ 1'425.

(Photo =  www)

178+179

*

200



ex 5092

Gibbons		Start price in CHF
	180-81	* 350

5092 1883/84: 5 s. rose and 5 s. crimson on white paper, lettered AE and IA respectively, wmk. Large Anchor, unused, part to large part original gum, both nicely centred examples with vivid colours, IA with trivial thinned perf at top, otherwise fresh and fine Gi = £ 2075.



5093

5093 1883/84: 10 s. cobalt on white paper, lettered DF, wmk. Large Anchor, unused, well centred and of pleasing fresh colour, a most attractive example of this rare stamp. Certs. RPSL (1940) and RPSL (2025) Gi = £ 35'000.
Provenance: H.R. Harmer, London, 3 March 1941, lot 260
Collection Lord Vestey, Spink, London 25 Sept 2014, lot 21.

182	(*)	4'500
-----	-----	--------------



5094



5095

5094 1883/84: 10 s. ultramarine on white paper, lettered GB, wmk. Large Anchor, unused, with part original gum, centred slightly to the right, pleasing fresh shade, light diagonal crease, otherwise fine Gi = £ 2250.

183	*	350
-----	---	------------

5095 1883/84: 10 s. pale ultramarine, lettered HD, wmk. Large Anchor, unused, superbly centred and in a delicate pastel shade, 'short central crease' mentioned on cert. unapparent, fine and most attractive. Cert. RPSL (2025) Gi = £ 2'500.

183a	(*)	350
------	-----	------------



Baron de Worms



5096

Gibbons

Start price
in CHF

5096

1884 (April 1): £ 1 brown-lilac, lettered JA, wmk. Three Imperial Crowns, unused, part original gum, centred a tad to foot, good colour, vertical gum bend at right noted for strict accuracy and not mentioned on the accompanying certificate, an otherwise fine and rare stamp. Cert. Brandon (2001)
Gi = £ 28'000.

*Provenance: Collection Baron de Worms, Harmers, 9 May 1938, lot 196
Collection G.H. Boucher, Robson Lowe, 11 Sept 1949, lot 299.*

185

*

6'000



5097

5097

1888 (Feb): £ 1 brown-lilac, lettered DC, wmk. Three Orbs, unused, ironed creases and slight uniform toning, but a presentable example of this extremely rare stamp, one of the rarities of the Surface Printed issues. Certs. Brandon (2001), RPSL (2025) Gi K16 = £ 60'000.

186

(*)

8'000

5098

1883/84: ½ d. slate blue through 1 s. dull green, wmk. Imperial Crown, unused, the complete set of ten, the 2 d. and 1 s. values with the odd toned perf., overall fresh and fine throughout, part or large part og. A difficult set to assemble Gi = £ 5'550.

(Photo = www)

187/196

*

600

5099

1887/92: Jubilee Issue group of unmounted, twenty singles, including a range of shades, from ½ d. to 1 s. values, noting the scarce 2 d. green and scarlet, 9 d. dull purple and blue, 10 d. dull purple and carmine and dull purple and deep dull carmine, 1 s. dull green and 1 s. green and carmine, etc., well centred overall and a fresh group, scarce in this quality Gi = £ 1'900+.

(Photo = www)

197-214

**

400



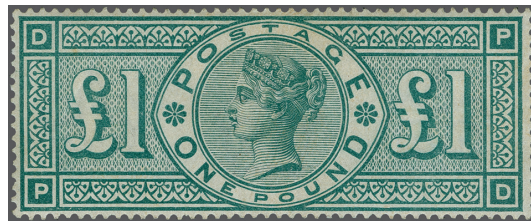
5100



5101

- 5100** 1890: 3 d. purple on orange, wmk. Imperial Crown, unused, unmounted original gum, nicely centred and of vivid colour, a fine example of this scarce shade. Cert. Hendon (2011) $G_i = \text{£ } 1'300$.
- 5101** 1887 (Jan 1): 5 d. dull purple and blue, Die I, wmk. Imperial Crown, unused, unmounted original gum, fresh and fine $G_i = \text{£ } 1'100$.

Gibbons		Start price in CHF
204	**	250
207	**	250



5102

- 5102** 1891 (Jan 28): £ 1 green, lettered PD, wmk. Three Crowns, unused example with unmounted original gum, two light gum bends, a fresh and scarce example of this key value. Signed Senf $G_i = \text{£ } 5'000$.

212	**	1'500
-----	----	--------------

Queen Victoria, Official Stamps



5103

- 5103** 1840: 1 d. black, "V R" Official, lettered GD, unused, without gum, ample to large margins all around, experimental cancellation removed, a most attractive example of this rare stamp. Cert. Brandon (2006) $G_i = \text{£ } 20'000$.
- 5104** **I.R. Official** 1882/88: selection of seven unused, most part original gum, with ½ d. pale green, 1d. lilac, Die II, overprinted in black (unmounted) and the scarce blue-black, 6 d. grey, ½ d., slate blue, 2½ d. lilac, and 1 s. dull green, the last crudely rebacked, otherwise a chiefly fine group $G_i = \text{£ } 7'610$.

(Photo = www)

V1	(*)	4'500
O2/07	*/(*)/**	750



Somerset House



5105

Gibbons

Start price
in CHF

5105	<p>I.R. Official 1885 (March 12): 5 s. rose on blued paper, lettered GG, wmk. Anchor, unused, with part original gum, well centred and of fresh colour, the odd trivial toned perf. mentioned for strict accuracy, an attractive example of this rare Official. Cert BPA (1960) <small>Gi = £ 17'500</small> <i>Provenance: L. Praportchetovitch Collection, Plumridge 956th sale, 23/24 Febr. 1933, lot 100</i></p>	O8	*	4'000
-------------	---	----	---	--------------



5106



5107

5106	<p>I.R. Official 1890 (March): 5 s. rose, wmk. Anchor on white paper, lettered LA, overprint in blue-black ink, an unused example with some staining on reverse, well centred, some gum soaked perforations, otherwise fine, sweated part og. Cert. RPSL (2025) <small>Gi L7(2)b= £ 14'000.</small></p>	O9b	*	1'000
5107	<p>I.R. Official 1884: 5 s. rose, lettered KE, wmk. Anchor, variety overprinted in blue-black, unused, some light uniform soiling, but a difficult stamp unused. Cert RPSL (1990) <small>Gi = £ 12'000</small> <i>Provenance: Collection Golden, Grosvenor, 9 Nov 2015, lot 415.</i></p>	O9b	(*)	1'200



5108

Gibbons

Start price
in CHF

- 5108** I.R. Official 1890 (March): 10 s. cobalt on white paper, lettered EE, wmk. Anchor, unused, well centred and of vivid colour, closed pinhole below "A" of "Postage", large part og. A very rare stamp of exceptional appearance. Cert. RPSL (2025) Gi = £ 22'000.
Provenance: Collection Drs. Joanne & Edward Dauer, Spink, London, 14 April 2014, lot 90.

O9cb

*

2'500

5109

- 5109** I.R. Official 1890 (March): 10 s. ultramarine on white paper, lettered FA, wmk. Anchor, unused, with part original gum, centered slightly to the right, toned in top and bottom margin and light gum bends, but a scarce stamp unused. Cert RPS (1969) Gi = £ 11'500
Provenance: Collection J. Silkin, Stanley Gibbons, London, 5 Oct 1978, lot 201
Cavendish, 13 March 1998, lot 357
Grosvenor, 8-9 April 2010, lot 976.

O10

*

1'400

5110

- 5110** I.R. Official 1890 (March): 10 s. ultramarine on white paper, lettered NG, overprint in blue-black, wmk. Anchor, unused, with part original gum, centered to the left, trivial gum bend and dealer's handstamp on reverse bleeds through slightly to lower margin, otherwise fine, an attractive stamp of brilliant colour. Cert BPA (1990) Gi = £ 12'500
Provenance: Collection Drs. Joanne & Edward Dauer, Spink, 14 April 2014, lot 91.

O10b

*

3'000



Philipp von Ferrary



5111

Gibbons

Start price
in CHF

- 5111** I.R. Official 1885 (March 12): £ 1 brown-lilac, lettered EB, wmk. Three Crowns, unused, with large part original gum, exceptional centering and fresh colour, a fine and most appealing example of this Commonwealth rarity. Cert RPS (1974) and BPA (1996). Gi = £ 60'000
*Provenance: Collection Phillippe La Renotiere von Ferrari, Gilbert 10 April 1924, lot 233
 Harmer 17/18 April 1939, lot 223 ("A Brilliant mint copy")
 R. Lowe 24 Sept. 1974, lot 1588; Collection Howard Gibraltar, Shreves Philatelic Galleries, 23 February 1996
 Collection Drs. Joanne & Edward Dauer, Spink, 14 April 2014, lot 92.*

O11 * **18'000**



5112

Gibbons

Start price
in CHF

5112 I.R. Official 1890 (March): £ 1 brown-lilac, lettered TC, wmk. Three Orbs, unused, with part original gum, nicely centred for this challenging issue, fresh colour, two light vertical gum creases, an otherwise fine example of this key stamp, one of the exceptional rarities of Great Britain. Cert. Brandon (2007) Gi = £ 85'000.

*Provenance: Stanley Gibbons New York, 18 Feb 1981, lot 80
Collection Rhone, David Feldman, September 1981, lot 1654.*

O12 * **20'000**

5113 I.R. Official 1887/1900: group of five, comprising ½ d. vermilion, 2½ d. purple on blue, 1 s. dull green, ½ d. blue-green, and 6 d. purple on rose-red, all unused, with part or large part original gum, the ½ d. vermilion with wrinkle at upper left, the 1 s. some gum-soaked perfs, a useful group, mostly fine. Gi = £ 1'835.

(Photo = www)

O13-O18 * **250**



5114

Gibbons Start price
in CHF

- 5114** I.R. Official 1892 (June): £ 1 green, lettered ND, wmk. Three Crowns, unused with part original gum, redistributed over thin spots, the accompanying certificate noting "regummed over two thinned spots", which we feel is harsh, else a fresh and scarce example. Cert BPA (2007). Gi = £ 12'500.
Provenance: Red Cross & St. Johns Fund auction, Christies M. & W., 30 December, 1941-1 Jan. 1942, lot 812
Collection "Vestey", Spink, 25 Sept. 2014, lot 224

O16 (*) **2'500**

- 5115** O.W. Official 1896/1902: group of four, comprising ½ d. vermilion, ½ d. blue green, 1 d. violet, and 10 d. dull purple & carmine, unused, with part or large part original gum, a few trivial flaws, overprint on the 10 d. likely spurious and omitted from the catalogue value, mostly fine Gi = £ 1'325.

O31-O35 * **200**

5116



5118

- 5116** O.W. Official 1902 (April 29): 5 d. dull purple & blue, Die II, wmk. Imperial Crown, unused with large part original gum, well centred and of good colour, scarce and fine. Cert. Philatelic Foundation (1984) Gi = £ 4'000.
Provenance: Collection Howard Gibraltar, 1996
Collection Drs. Joanne & Edward Dauer, Spink, 14 April 2014, lot 98.

O34 * **800**

- 5117** Army Official 1896/1901: ½ d. vermilion to 6 d. purple on rose red, set of five, part to large part original gum, both the ½ d. and 1 d. also with examples of the Type II "OFFICIAL" overprint, a fresh and nicely centred group, fine. Gi = £ 728.

O41/45 * **150**

- 5118** Government Parcels 1886 (May 1): 1½ d. lilac, lettered HK, wmk. Imperial Crown, lightly hinged original gum, fresh and fine. Gi = £ 400.

O61 * **100**

5119

- 5119** Government Parcels 1886 (May 1): 6 d. dull green, lettered BN, wmk. Imperial Crown, unused, with part original gum, centred a tad to the lower left, a fine and scarce example of this key value. Cert. BPA (1989) Gi = £ 3'500.

O62 * **600**

- 5120** Government Parcels 1883/1900: group of nine singles, comprising 1883/6 9 d. and 1 s. 1887-90 1 1½ d., 6 d., and 1 s., and 1891-1900 1 d. to 1 s., each unused, with part original gum, generally well centred, a few suspect overprints noted, careful inspection warranted thus, chiefly fine.

(Photo = www) O63-O72 * **500**



5121

Gibbons

Start price
in CHF

- 5121** Government Parcels 1888 (August 21): 9 d. dull purple & blue, wmk. Imperial Crown, unused, with lightly hinged original gum, bright colour and choice centering, very fine. Cert. RPSL (2010)
Gi = £ 425.

O67

*

120



5122



Headquarters of the London School Board on Victoria Embankment

- 5122** Board of Education 1902 (February 19): 1 s. green & carmine, wmk. Imperial Crown, unused, with lightly hinged original gum, corner crease at lower left and colour slightly suffused, else a fine and nicely centred example of this scarce stamp, expert signed in pencil and ink on reverse. Cert. BPA (2014). Gi = £ 12'000.

O82

*

2'000

1902/11, King Edward VII

- 5123** 1902/10: ½ d. to 2 s. 6 d. De La Rue printings on ordinary paper, wmk. Imperial Crown or Large Anchor, perf. 14, unused, original gum, all unmounted save for a 9 d. and a couple lower-denomination issues, the odd trivial toned perf or small imperfection, the 4 d. brown-orange with certificate for the block from which it originated, a useful holding of the many shades of this printing, overall fresh and fine (29 stamps). Cert Hendon (1996) for Gi. M25(1) Gi = £ 3'200+ (Photo = www)
- 5124** 1905/10: 1½ d. to 2 s. 6 d., De La Rue printings on chalk-surfaced paper, wmk. Imperial Crown or Large Anchor, perf. 14, unused, original gum, most unmounted og., the odd lightly mounted example including the two 2 s. 6 d. values, a few with small imperfections, a chiefly fine group, difficult to assemble (24 stamps) Gi = £ 4'500+. (Photo = www)

215/260

*/**

600

223/262

*/**

1'000



5125



5126

- 5125** 1902 (May 5): 5 s. bright carmine, De La Rue printing, wmk. Large Anchor, unmounted original gum, superbly well centred, very fine $G_i = \text{£} 850$.
- 5126** 1902 5 s. deep dark carmine, De La Rue printing, wmk. Large Anchor, perf. 14, unused, with full unmounted original gum, well centred, small spot near King's chin, otherwise very fine $G_i = \text{£} 900$.

Gibbons		Start price in CHF
263	**	200
264	**	150



5127

- 5127** 1902 (April 5): 10 s. ultramarine, wmk. Large Anchor, perf. 14, unused, with lightly mounted original gum, good centering and bright shade, a pleasing example of this difficult stamp, very fine $G_i = \text{£} 1'000$.

265	*	250
-----	---	------------



5128

- 5128** 1902 (June 16): £1 dull blue green, wmk. Three Crowns, perf. 14, unused, with full unmounted original gum, well centred with perforations clear on all sides, good colour, a few trivial gum wrinkles noted for strict accuracy, a fresh and very fine example of this key value $G_i = \text{£} 3'000$.
- 5129** 1911, ½ d. to 4 d. Harrison & Sons printings on ordinary paper, wmk. Imperial Crown, unmounted original gum, perf. 14 and 15x14 examples, complete per the Gibbons listed shades save for the 1 d. aniline pink and aniline-rose and the two rare 3 d. grey on lemon, lovely fresh colours, the odd trivial flaw, fine lot (20 stamps) $G_i = \text{£} 2'100+$.

266	**	600
267-286	**	400

(Photo =  www)



ex 5130

- 5130** 1911 (May): 1 d. aniline pink and 1 d. aniline rose, Harrison & Sons printing on ordinary paper, wmk. Imperial Crown, perf. 14, unmounted original gum, distinctive vibrant shades, fine. Cert RPSL (1971) and Hendon (2009) for the blocks from which these originated $G_i = \text{£} 1'550$.

275+275a	**	400
----------	----	------------



5131



5132

- 5131 1911: 3 d. grey on lemon, Harrison & Sons printing, wmk. Imperial Crown, perf. 14, unused, with full unmounted original gum, centred to the upper left, bright fresh colour, pencil notation on gum, a fine example of this rare and sought after printing. Cert. RPSL (1998) Gi M21(3) = £ 7'000.
- 5132 1911: 3 d. grey on lemon, Harrison & Sons printing, wmk. Imperial Crown, perf. 15 x 14, unused, with unblemished full original gum, lovely bright colour, scarce and fine. Cert. RPSL (1988) for a pair from which this stamp originates Gi M22(3) = £ 4'250.
Provenance: Collection Lou Manzi, May, 1977
Collection Howard Gibraltar, February, 1996
Collection Drs. Joanne & Edward Dauer, Spink London, April 14, 2014, lot 66.
- 5133 1911-13, 1½ d. to 1 s. Somerset House printings on ordinary paper, wmk. Imperial Crown or Large Anchor, unmounted original gum, perf. 14, with the scarce 1911 grey dullish purple shade well centred, but with trace of disturbed gum and included in catalogue value as hinged thus, missing only the rare 6 d. bright magenta, uniformly fresh colours, a useful holding of this difficult printing, fine (27 stamps) Gi = £ 3'000+.

Gibbons	Start price in CHF
277a **	2'500
285a **	1'500
287/314 **	1'000



Somerset House



5134

- 5134 1911 (October 31): 6 d. bright magenta, Somerset House printing, wmk. Imperial Crown, perf. 14, original gum, with hinge remnant, well centred and of bright fresh colour, a fine example of this elusive shade, one of the key stamps of the Edward VII era. Cert. RPSL (2011) Gi = £ 10'000.

296	*	4'000
-----	---	--------------



5135

- 5135** 1911 (Sept 15): Somerset House 2 s. 6 d. dull greyish-purple, an unused example in this rare shade, fresh and very fine, large part og. Gi M50(1) = £ 950.

Gibbons		Start price in CHF
315	*	200



5136



5137

- 5136** 1911 (Sept 15): Somerset House 2 s. 6 d. dull reddish-purple, an unused example, fresh and very fine but for slight rub at top, unmounted og. Gi M50(2) = £ 625.
- 5137** 1911 (Sept 15): Somerset House 2 s. 6 d. dark purple, an unused example, fresh and very fine but for slightest blunt perf. at base, unmounted og. Gi M50(3) = £ 675.

316	**	180
317	**	250



5138



5139

- 5138** 1912 (February 29): 5 s. carmine, Somerset House printing, wmk. Large Anchor, perf. 14, unused, with full unmounted original gum, fresh and very fine Gi = £ 875.
- 5139** 1912 (January 14): 10 s. blue, Somerset House printing, wmk. Large Anchor, perf. 14, unused, unmounted original gum, pleasing bright colour, fine Gi = £ 2'100.

318	**	300
319	**	500



5140

- 5140** 1911 (Sept 3): £1 deep green, Somerset House printing, wmk. Three Crowns, perf. 14, unused, unmounted original gum, typical light gum wrinkles in places noted for strict accuracy, a fresh and attractive example, fine Gi = £ 3'000.

320	**	800
-----	----	-----

King Edward VII, Official Stamps



ex 5141

- 5141** I.R. Official 1902-4: ½ d. to 6 d., wmk. Imperial Crown, unmounted original gum, the 2½ d. with horizontal crease, the 6 d. with fake overprint and thus not counted, fine $G_i = £ 1'055$.

Gibbons

Start price
in CHF

O20/O22

**

120

5142



King Edward VII

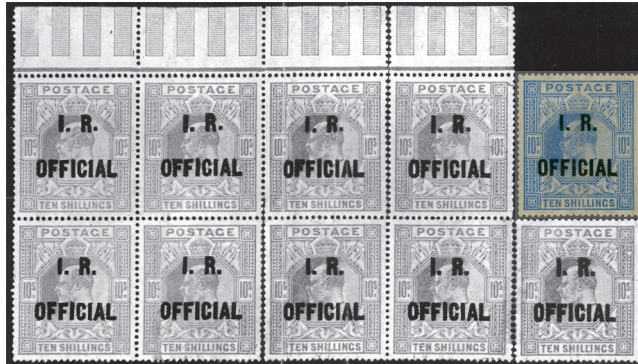
- 5142** I.R. Official 1902 (April 29): 5 s. bright carmine, wmk. Anchor, perf. 14, unused, with part original gum, some coiled perfs, light horizontal crease and smaller gum creases, an otherwise fine example of this official rarity, with only a small number of unused examples extant. Certs. BPA (1934 and 2007). $G_i = £ 38'000$.

Provenance: Collection Vestey, Spink London, September 25, 2014, lot 228

O25

*

5'000



5143

Gibbons

Start price
in CHF

5143 I.R. Official 1902 (April 29): 10 s. ultramarine, wmk. Anchor, perf. 14, unused, without gum, colour somewhat faded, but a well centred example of this great rarity; one of the key stamps of Great Britain. Cert. RPSL (1955) $G_i = \pounds 85'000$.

Note: The stamp offered here originated from the famous block of nine found in a small leather jewel box in 1947, and illustrated in the 'The British Philatelist' in June 1947 - a photocopy of the article and the block accompany this lot. The Karl Louis Index records a total of 32 examples of this Official, of which a pair is in the Royal Collection, a block of four in the National Collection of Ireland, and a single in the Evans collection at the City Museum & Art Gallery in Birmingham. Provenance: Corinphila sale 45 (April 1958), lot 3842

London 2015 Europhilex Rarities Auction, Corinphila, May 16, 2015, lot 25;

O26

(*)

17'500



Houses of Parliament in London



5144

Gibbons

Start price
in CHF

5144 I.R. Official 1902 (April 29): £ 1 dull blue-green, wmk. Three Crowns, perf. 14, unused, with large part original gum, small hinge remnant, nicely centred and of good colour, a fresh and fine example of this most elusive stamp, particularly rare in such quality. Cert BPA (1980), Ferchenbauer (1985)
Gi = £85'000.

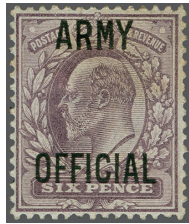
027

*

20'000



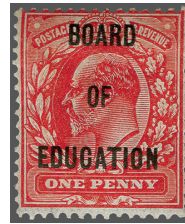
ex 5145



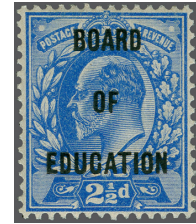
ex 5146



ex 5147



ex 5148



5149

		Gibbons	Start price in CHF
5145	O.W. Official 1902-3: ½ d. to 10 d., wmk. Imperial Crown, perf. 14, unused, with part original gum, a well centred group, the 2½ d. and 10 d. values with suspect overprints and excluded from the catalogue value, a scarce group, fine. Cert BPA (2013) for Gi O38 Gi = £ 3'150.	O36-040 *	800
5146	Army Official 1902-3: ½ d. blue-green to 6 d. pale dull purple, wmk. Imperial Crown, perf. 14, unused, with part original gum, the 6 d. showing both overprint types, the Type O6 example with single short perf at foot, the rare September 2003 example generally very fine, a scarce set: all with certs. RPSL (2025) Gi MO19/MO22 = £2'987.	O48/52 *	500
5147	Government Parcels 1902: 1 d. scarlet to 1 s. dull green & carmine, wmk. Imperial Crown, perf. 14, unused, with part original gum, several with hinge remnants, of good colour and well centred, the 1s. value with various pencil signatures on reverse, a difficult set, fine Gi = £ 2'575.	O74/O78 *	600
5148	Board of Education 1902-4: ½ d. blue-green & 1 d. scarlet, wmk. Imperial Crown, perf. 14, unused, with part original gum, hinge remnants, a fine duo Gi = £ 360.	O83+084 *	100
5149	Board of Education 1902: 2½ d. ultramarine, wmk. Imperial Crown, perf. 14, unused example of fresh bright colour, rare and very fine, large part original gum. Signed Herbert Bloch Gi = £ 5'000. <i>Provenance: Collection Dauer; Spink, London, 14 April 2014, lot 112.</i>	O85 *	1'000



5150

*London School Board in Session*

5150	Board of Education 1904 (February 6): 5 d. dull purple & ultramarine, wmk. Imperial Crown, perf. 14, well centred and fresh, a lovely example of this elusive Official, extremely fine with large part og. A rarity. Signed Richter, Engel, W.H. Colson. Cert. RPSL (1976) Gi = £ 30'000.	O86 *	12'000
------	--	-------	--------



In the classroom



5151

Gibbons

Start price
in CHF

5151 Board of Education 1902 (Dec 23): 1 s. dull green & carmine, wmk. Imperial Crown, perf. 14, unused, with large part original gum, small hinge remnant, bright colour on fresh paper, a desirable example of this exceptional rarity of Great Britain philately. Cert. BPA (2002), Fulpius (1942) with his backstamp Gi = £ 160'000.

087

*

70'000



ex 5152

- 5152** **Royal Household 1902:** ½ d. blue-green & 1 d. scarlet, wmk. Imperial Crown, perf. 14, unused, the ½ d. with small hinge remnant, the 1 d. unmounted og., fine and scarce Gi = £ 700.

Gibbons		Start price in CHF
O91+O92	*/**	150



ex 5153



5154



5155

- 5153** **Admiralty Official 1903/4:** ½ d. blue-green to 3 d. purple on yellow, set of six with overprint Type O10, wmk. Imperial Crown, perf. 14, unused, part to large part original gum, the 2 d. with light corner bend, offered with ½ d. blue-green & 1 d. scarlet, overprint Type O11, unmounted original gum, fine Gi = £ 1,745.

O101/108	*/**	400
----------	------	------------

- 5154** **Admiralty Official 1903 (April 2):** 1½ d. dull purple & green, overprint Type O11, wmk. Imperial Crown, perf. 14, unused, with full original gum, almost imperceptibly hinged, light diagonal crease, but a scarce stamp of fine appearance Gi = £ 1'900.

O109	*	300
------	---	------------

- 5155** **Admiralty Official 1903 (April 3):** 2 d. yellowish green & carmine, overprint Type O11, wmk. Imperial Crown, perf. 14, unused, with large part original gum, light vertical crease, yet a scarce stamp of otherwise fine appearance. Cert BPA (1989) Gi = £ 2'700.

O110	*	400
------	---	------------



5156



5157

- 5156** **Admiralty Official 1903 (April 3):** 2½ d. ultramarine, overprint Type O11, wmk. Imperial Crown, perf. 14, unused, pleasing fresh colour, fine, part original gum with small hinge remnant Gi = £ 2'900.
Provenance: Collection Lord Vestey, Spink London, September 25, 2014, lot 256.

O111	*	800
------	---	------------

- 5157** **Admiralty Official 1903 (Dec):** 3 d. dull purple & orange on yellow, overprint Type O11, wmk. Imperial Crown, perf. 14, an unused example of bright colour, fresh and fine, one iron spot on perf. and hinge remnant on large part original gum. Certs. Philatelic Expertising (Great Britain) Ltd. (1998), RPSL (2025) Gi MO112 = £ 2'600.

O112	*	600
------	---	------------

King George V and Later Issues

- 5158** **Downey Heads 1911/12:** comprehensive range of unmounted mint, comprising Type I ½ d. values, Dies A and B, each in the three Gibbons-listed shades, the 1 d. with all seven listed examples of both the Die A (2) and B (5), 1912 booklet stamps with both shades of the ½ d. and 1 d., the 1912 Type II, wmk. Imperial Crown, with the three each of the ½ d. and 1 d., wmk. "Simple" Royal Cypher ½ d. and 1 d., and wmk. "Multiple" Royal Cypher with ½ d. (3) and 1 d. (2), three certificates accompany, two being photocopies for the blocks from which the single stamps offered here originated, the odd value with light bend other small imperfection, the key values all sound, an overall fine and fresh collection (30 items). Certs RPSL (Gi 323, 2013), Brandon (Gi 331, 1979), Hendon (Gi 333, 2012) Gi = £ 2'200+.

321/350	**	600
---------	----	------------

- 5159** **1912/24:** ½ d. to 1 s. Royal Cypher issues, a comprehensive holding of fifty-one stamps, including the two 1913 Multiple Cypher issues, on Lighthouse hingeless pages, complete for the available spaces save for the the three rarest shades, offered separately, uniformly fresh colours, unmounted original gum, one ½ d. with pencil notation on gum and a few with light bends, a fine and most attractive collection, and an ideal reference. Certs. RPSL (2011, photocopy, for 371a, and 1994, for 393) Gi = £ 2,300+ (Photo = www)

351/398	**	600
---------	----	------------



5160

Gibbons

Start price
in CHF

5160 1914: 1/2 d. Cyprus Green, wmk. Royal Cypher, perf. 15 x 14, unmounted original gum, in the true distinctive shade, a fresh and fine example of this much sought after shade, one of the key stamps of the reign of King George V. Cert BPA (1961) and Hendon (2013) Gi N14(10) = £ 11'000+

355

**

3'000



5161



5162

5161 1920: 2 1/2 d. indigo, wmk. Royal Cypher, perf. 15x14, unused, unmounted og., but with pencil notation 'SG 373' on gum, catalogued as mounted thus, distinctive fresh colour, noted on the accompanying certificate as "pale" shade, well centred, a desirable example of this scarce shade, fine. Cert. RPSL (1975) Gi = £ 4'500.

373

**

1'000

5162 1920 (December 20): 2 1/2 d. dull Prussian blue, wmk. Royal Cypher, perf. 15 x 14, unmounted original gum, with sheet margin selvedge at foot, true fresh colour, a fine example of this challenging shade. Cert Hendon (2013) Gi = £ 1'500+

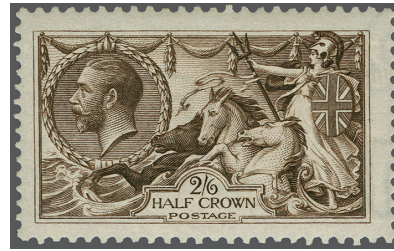
373a

**

400



5163



5164

- 5163** 1913 (June 30): Waterlow Seahorse, 2 s.6 d. deep sepia brown, unused, well centred and of striking deep colour, a few shorter perfs. at right, with slightly toned unmounted original gum $G_i = \text{£ } 850$
- 5164** 1913 (June 30): Waterlow Seahorse, 2 s. 6 d. sepia brown, unused, with full unmounted original gum, rich deep colour, fine $G_i = \text{£ } 600$

Gibbons		Start price in CHF
399	**	120
400	**	150



5165



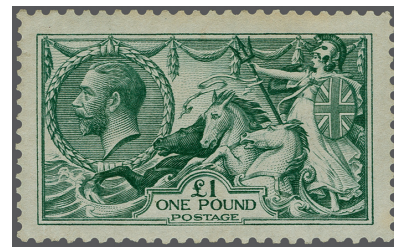
5166

- 5165** 1913 (June 30): Waterlow Seahorse, 5 s. rose-carmine, unmounted original gum, nicely centred amidst large margins, very fine $G_i = \text{£ } 1'100$.
- 5166** 1913 (June 30): Waterlow Seahorse, 10 s. indigo blue, unused, superbly well centred and of vibrant colour, pressed vertical crease, but an attractive stamp of fine appearance $G_i = \text{£ } 1'500$.


401	**	300
402	(*)	250



5167



5168

- 5167** 1913 (June 30): Waterlow Seahorse, £ 1 green, unmounted original gum, nicely centred and of good colour, a fine example of this scarce and desirable stamp $G_i = \text{£ } 3'750$.
- 5168** 1913 (August 1): Waterlow Seahorse, £ 1 dull blue-green, large part original gum, well centred, fresh colour, light bends in places, a fine appearing example of this challenging stamp. Cert. RPSL (1986) $G_i = \text{£ } 2'800$.
- 5169** 1915: 2 s. 6 d. De La Rue Seahorses, four shades, unused, unmounted original gum, somewhat toned in places, the pale brown shade showing distinctive plate wear, one example with a few shorter perfs, else a fine and useful reference group $G_i = \text{£ } 2'480$.
(Photo =  www)

403	**	1'200
404	*	700
405/8	**	600



5170



5171

- 5170** 1915: De La Rue Seahorse, 5 s. bright carmine, unused, unmounted but toned original gum, nicely centred and of good colour, fine $G_i = \text{£ } 1'100$.
- 5171** 1915: De La Rue Seahorse, 5 s. pale carmine, showing the distinctive worn impression, unmounted original gum, fine $G_i = \text{£ } 1'400$.

409	**	250
410	**	300



5172



5173

- 5172** 1915: De La Rue Seahorse, 10 s. deep blue, unused, well centred, a scarce stamp, fine. Cert. RPSL (2025) $G_i = \text{£ } 3'250$.
- 5173** 1915: De La Rue Seahorse, 10 s. blue, unused example of fine centering, of fresh colour, large part og. A scarce stamp. Cert. RPSL (2025) $G_i N70(1) = \text{£ } 2'500$.

Gibbons		Start price in CHF
411	(*)	800
412	*	600



5174



Premises of De La Rue

- 5174** 1915: De La Rue Seahorse, 10 s. pale blue, unused, with unmounted original gum, pleasing delicate shade, scarce and very fine $G_i = \text{£ } 3'500$.
- 5175** 1918-19: Bradbury Wilkinson Seahorse, 2 s. 6 d. group of four shades, in olive-brown, chocolate-brown, reddish-brown, and pale brown, each with unmounted original gum, the chocolate-brown with a few shorter perfs, the reddish brown with traces of ink offset on gum, else a fine quartet $G_i = \text{£ } 1'340$.

413	**	1'000
413a/415a	**	300



5176



5177

- 5176** 1919 (January): Bradbury Wilkinson Seahorse, 5 s. rose red, unused, full original gum, with spot of light disturbance, well centred, fine $G_i = \text{£ } 325$.
- 5177** 1919 (January): Bradbury Wilkinson Seahorse, 10 s. dull grey-blue, full original gum with trivial disturbance at right, good colour and impression, fine $G_i = \text{£ } 475$.
- 5178** 1924/26: ½ d. to 10 d. Block Cypher issues, set of twelve, the 6 d. on both chalk-surfaced and ordinary paper, with ½ d. to 2 d. watermark sideways, ½ d. to 6 d. watermark inverted, all fine and fresh, unmounted original gum, a challenge to assemble, fine lot (27 stamps) $G_i = \text{£ } 1'856$.

416	*	100
417	*	150
418/429	**	500



5179

- 5179** 1924 (July): 2 d. orange, Die II, variety "No Watermark", full unmounted original gum, with sheet margin at right, bright shade, light vertical bend, fine Gi = £ 1'750.

Gibbons		Start price in CHF
421a	**	400



5180



5181

- 5180** 1924 (October 10): 2½ d. blue, variety "No watermark", unused, unmounted original gum, a well centred single in a pleasing light shade, one of the rarities of this issue, very fine Gi = £ 3'250.
- 5181** 1914 (November 28): 10 d. turquoise blue, watermark Block Cypher, inverted, unmounted original gum, fresh colour on bright paper, a scarce variety, very fine Gi = £ 3'250.

422a	**	1'200
428wi	**	1'000



5182

- 5182** 1914 (October 24): 1 s. buff-brown, watermark Block Cypher, variety "Watermark Inverted", scarce shade, fine unmounted original gum. Cert. (2025) Gi N45(2) = £ 600+.
- 5183** 1924/1936: King George V & King Edward VIII balance, neatly-mounted on hingeless pages, comprising 1924/5 British Empire Exhibition set of "1924" and "1925" dates, 1934/6 ½ d. to 1 s. definitives, the ½ d. to 1½ d. also with watermark inverted, and ½ d. to 2 d. with watermark sideways, 1935 Silver Jubilee set, the ½ d. to 2½ d. blue, three also with watermark inverted, and 1936 King Edward VIII set of four, and ½ d. to 1½ d. set with inverted watermarks, unmounted original gum, fresh and fine Gi = £ 580+
(Photo = www)
- 5184** 1929: Postal Union Congress, group of ten, with ½ d. through 2½ d., upright watermark, ½ d. to 1½ d., with sideways watermark, and ½ d. to 1½ d. with inverted watermark, unmounted original gum, fresh and fine. Gi = £ 432
(Photo = www)

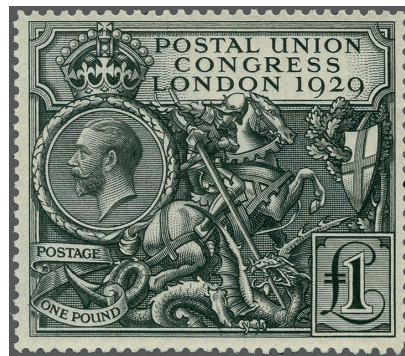
429wi	**	180
430/433 +439 /460+vars	**	150
434/437 + vars	**	120



5185

- 5185** 1929 (May 10): 2½ d. blue, watermark Block Cypher, unused, unmounted original gum, somewhat toned in places, an otherwise fresh and well centred example of this rare watermark variety, fine Gi = £ 3'250.

437wi	**	1'000
-------	----	-------

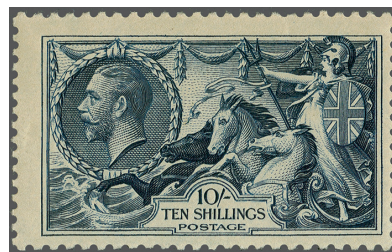


5186





View of London


		Gibbons		Start price in CHF
5186	1929: Postal Union Congress £ 1 black, unused, with unblemished full original gum, nicely centred, fresh and very fine $G_i = \text{£ } 1'100$.	438	**	300



ex 5187

5187	1934 (October 16): Seahorses, Re-engraved, 2 s. 6d. to 10 s., set of three, watermark Single Cypher, unmounted original gum, the 10 s. centred to the lower right, the others well centred amidst balanced margins, good colour and impressions, fine. $G_i = \text{£ } 1000$	450/452	**	300
5188	1937/51: King George VI, comprehensive unmounted collection, neatly presented on hingeless pages, complete for the available spaces, note 1937/47 definitives, including the ½ d. through 2½ d. in both watermark sideways and watermark inverted varieties, 1939/48 2s.6d. through £1 complete, 1941/2 and 1950/1 issues complete including examples showing the watermark sideways and watermark inverted varieties, 1951 Festival issues complete, etc, overall fresh and very fine $G_i = \text{£ } 1'100+$. (Photo =  www)	461/514	**	300
5189	1953/2012, Queen Elizabeth II unmounted collection in five Lighthouse hingeless albums, complete for the available spaces, with single stamps complemented throughout by souvenir sheets, booklets, miniature sheets, etc, including many varieties note 1952/67 Wilding definitive printings including phosphor and phosphor-graphite issues, including watermark sideways and inverted varieties, 1955/8 Waterlow and De La Rue, 1959 De La Rue & Bradbury, Wilkinson, and 1968 Bradbury, Wilkinson "Castles", later issues including commemoratives, self-adhesives, postage dues, etc, as well as a complete 1970/2012 album of Machin definitives, including Regional Issues, uniformly bright and fresh colours, a very fine and most attractive collection $G_i = \text{£ } 10'500+$. (Photo =  www)	515/	**	2'000

Postage Due

5190	1914/52: Postage Dues, a comprehensive unmounted collection, presented on hingeless pages, complete for the available spaces, which do not include inverted or sideways watermarks, noting 1923/23 watermark Simple Cypher set of eight, with additional shades of the 1 d., 3 d., and 1 s., 1924/31 watermark Block Cypher set of nine, 1936/7 watermark E&R set of eight, with additional shade of the 5 d., 1937/8 watermark G VI R set of eight, and 1951/4 set of five, fresh and very fine $G_i = \text{£ } 2'000+$ (Photo =  www)	D1/D39	**	400
-------------	--	--------	----	------------