

359 Corinphila Stamp Auction
25 November 2025, 9:00 h

THE TRIANGULAR STAMPS OF CAPE OF GOOD HOPE

The Richard Debney Collection



CORINPHILA AUKTIONEN AG

Wiesenstrasse 8 · 8032 Zurich
Schweiz / Switzerland / *Suisse*

Tel +41-(0)44-389 91 91 · Fax +41-(0)44-389 91 95
e-mail: info@corinphila.ch · web: www.corinphila.ch

WE ARE THE CORPORATION INTERNATIONALE DE PHILATÉLIE

Corinphila is an abbreviation of Corporation Internationale de Philatelie. From our offices in the business quarters of Zürich, in the Seefeld area at Wiesenstrasse 8, our sales are made with traditional formats such as the auction room for physical bidding, book bids, as well as live phone bidding. Our digital platform for online live bidding connects the largest community in the world with bidders and buyers. Implicitly this means that no other company has more underbidders and buyers.

We connect the largest community in the world with bidders and buyers.

WHO WE ARE AT CORINPHILA!



Antoine Clavel,
Managing Director



Nora Blattner,
Chief Financial Officer



Alexandra Ferenczy,
Senior Office & Customer
Support Manager



Greg Todd,
Senior Philatelist



Tim Foster,
Philatelist



Devlan Kruck,
Senior Philatelist



Chris Green,
Senior Philatelist

WE PRESERVE TRADITIONS OF SUCCESS

As the oldest stamp auction house in Switzerland (founded in 1919), we at Corinthila Auctions know the market. Senior philatelic knowledge, fastidious presentations, and an international customer base guarantee the highest prices. Single-Owner Sales, and Catalogues, are our speciality being in operation for 105 years, of which 100 years with auctions (1925–2025).



CONTACT US NOW

We are open to discuss important holdings in a meeting with you, possibly in your home. Selling or buying – the next Corinthila Auction Event is never more than 6 months ahead. Reach us always at www.corinthila.ch. Contact us by phone at + 41 44 389 91 91 or by e-mail at info@corinthila.ch.



Walter Brühlmann,
Senior Philatelist



Thomas Berger,
Senior Philatelist



Andrzej Zbojnowicz,
Senior Philatelist



Volodymyr Svystun,
Philately & Logistics



Lodrup Emchi,
Apprentice



Jonas Hällström RDP,
Managing Director

TABLE OF CONTENTS

INHALTSVERZEICHNIS

Katalog / Catalogue 359

The Triangular Stamps of Cape of Good Hope

Los Nr. / Lot No.	Tuesday, 25 November 2025, 9:00 h	Seite / Page
4001–4041	1853 (July), 1d. and 4d. printed by Perkins Bacon on deeply blued paper	8–22
4042–4053	1853 (July), 1d. and 4d. printed by Perkins Bacon on slightly blued paper	23–25
4054–4153	1855/63, printed by Perkins Bacon on cream toned to white paper	26–57
4154–4164	1861 (Feb.-April), printed by Saul Solomon, Local Provisional Issue "Woodblock" 1d. red	58–60
4165–4165	1861, "Woodblock" Error of Colour 1d. blue	61–61
4166–4191	1861 (Feb.-April), printed by Saul Solomon, Local Provisional Issue "Woodblock" 4d. blue	62–70
4192	1861, "Woodblock" Error of Colour 4d. vermillion	70
4193	Woodblocks Government & Official Reprints	71
4194–4253	1863/64, printed by De La Rue from Perkins Bacon plates	71 - 85
4254–4255	Collections	85–86

CAPE OF GOOD HOPE

THE RICHARD DEBNEY COLLECTION

This collection has been almost 60 years in the making. It was begun in March 1969 when Richard informed his father, Dr. Thomas, that his great classic collection was going to be Cape of Good Hope Triangulars, similar to Dad's Western Australia. His dad immediately told him that he was crazy and that he would only get a „dozen triangulars“ and that „practically all would be the blue one.“ When the exhibit was awarded a gold medal (93 points) in Cape Town in 2022, it contained over 810 triangulars. His dad got right about the predominance of the blue one. The first triangular acquired came from the famed London dealer Ritchie Bodily at Stampex 1969.

After some success in regional competitions including winning the Sidebottom Trophy at the Yorkshire Philatelic Association Convention in the late 1980s, U.S. National exhibitions were entered. The first success, a gold with felicitations, came at NOJEX 2013.



The Collector Richard Debney (photo Stampboards Din).



This was the first Cape Triangular purchased by Richard Debney for this collection, bought from Ritchie Bodily at Stampex in March 1969.

With the recent surge in a more academic style of exhibiting, this collection has fared well, obtaining a gold in six frames at STOCKHOLMIA 2019. This and the Cape Town exhibit were the only multi-frame Cape of Good Hope exhibits in history where every 4d engraved triangular shown had been plated. Additionally, where possible, the stereotyped 1861 Woodblock provisionals have also been plated to the current state of the plates, formerly on display at the South African Cultural History Museum, Cape Town. Also, in what Richard playfully describes as „ship-naming,“ all vessels conveying covers overseas have been identified and in some cases the masters or captains in addition.

At one stage Richard had planned to retain the collection until his death. However, in December 2024, he had a heart attack whilst in his doctor's office which led to cardiac surgery later in the same day at a Manhattan hospital. An additional surgery took place in February 2025. This led to the decision to sell, to allow other collectors the opportunity to own items, some of which have great provenance, and which were the source of great pleasure to him. The decision to choose Corinthila was an easy one, Richard Debney says.

Antoine Clavel
Managing Director

Jonas Hällström RDP
Managing Director

Greg Todd
Senior Philatelist

The Triangular Stamps of Cape of Good Hope

The Richard Debney Collection



View of Cape Town

1853 (July), 1d. and 4d. printed by Perkins Bacon on deeply blued paper

Postage Stamps were ordered by the Cape Government on September 6, 1852. The Engraving records of Perkins, Bacon & Co. show that the Dies were not completed until February 16, 1853.



Louise Boyd Dale



Alfred F. Lichtenstein



4001

Gibbons

Start price
in CHF

4001 1853 (Feb): Die Proof for the 1 d. value, engraved by William Humphrys in black directly on thick cream card (70 x 70 mm.), the design showing the engraver's guidelines surrounding the stamp on all three sides, prior to burnishing. A superb and extremely rare Die Proof of the greatest significance both in Cape of Good Hope and in British Commonwealth philately.

Note: The work was that of the master engraver William Humphrys who was also responsible for the USA New York 1845 Postmaster Provisional when he was employed by Rawden, Wright & Hatch; and further famous designs for Perkins, Bacon such as the Western Australia 1854 1 d. Swan and the 1855 New Zealand Chalon Heads.

*Provenance: Collection Louise Boyd-Dale & Alfred F. Lichtenstein, Harmers, Washington DC, 25-26 Nov 1989, lot 11
Collection "Lady Hope", DF, Geneva, 19 Nov 1989, lot 20070.*

1 Die Proof

(*)

7'500



4002



4003

Gibbons

Start price
in CHF

- 4002** Plate Proof for the 1 d. value printed in black, Type A, on thin cream wove paper, large margins all round, very fine.

Provenance: Collection John H. Hall Jnr., Siegel, New York, 15 Sept 2000, ex lot 2269.

1 Plate Proof (*)

150

- 4003** Plate Proof for the 1 d. value printed in black, Type A, on thin cream wove paper, large margins all round, very fine. Cert. RPSL (1989).

1 Plate Proof (*)

150

4004

- 4004** Plate Proof for the 1 d. value printed in black, a pair with good to large margins all round, slightest hint of age spot not affecting the appearance, otherwise very fine.

1 Plate Proof (*)

200

4005

- 4005** Plate Proof for the 1 d. value printed in black, a block of eight with large margins all round, the top Proof of each pair being Die A, slightest hint of typical age spots not affecting the appearance, slightest bend on one corner otherwise very fine. A splendid and extremely rare large multiple.

Provenance: Collection "Maria de la Queillerie", Harmers, London, 18-19 May 1970, lot 2 (as a block of twelve)

Collection "Salisbury", Christie's, London, 20 Sept 1995, lot 1002

Collection Mrs. Ad. Indhusophon, Spink, London, 26 May 1999, lot 16

Collection "Besançon", Corinthila sale 231, Zurich, 30 Nov 2018, lot 6005.

1 Plate Proof 田(*)

1'500

Mrs. Ad Indhusophon



4006

Gibbons

Start price
in CHF

- 4006** Plate Proof for the 1 d. value printed in dull rose on ungummed wove paper, a pair with good to large margins all round and showing watermark Anchor Sideways (reversed) and lines from the sheet marginal watermark, fresh and very fine.

Provenance: Collection "Bonaventure", Christie's, London, 9 Sept 1993, lot 15.

1 Plate Proof

(*)

200

Louise Boyd Dale



4007



Alfred F. Lichtenstein

- 4007** Plate Proof for the 1 d. value printed in dull rose, a block of eight on white wove paper with watermark Sideways (reversed), large margins on three sides with one Proof just shaved at base, the top Proof of each pair being Die A. Delightful and extremely rare large multiple. Signed Holcombe. Cert. Holcombe (1992).

Provenance: Collection Louise Boyd Dale & Alfred F. Lichtenstein, Harmers, Washington DC, 25-26 Nov 1989, lot 35;

Collection "Franschhoek", Spink, London, June 2012, lot 6

Collection "Besançon", Corinthila sale 238, Zurich, 12 June 2019, lot 4032.

1 Plate Proof

田(*)

1'500

The First Issue. Stamps are frequently differentiated into deeply and slightly blued paper varieties. The blueing was caused by the addition of potassium prussiate (cyanide) into the printing ink or paper to prevent cancellation removal, possible fraud being an obsession with the British Post Office at the time. The printing process involved the dampening of the sheets prior to printing, the wetter sheets becoming more deeply blued than the drier ones. Whilst we follow the catalogue terminology of "paper deeply blued" or "paper slightly blued", it would be more correct to use the term "paper more or less blued", a practice long established by collectors of Great Britain.



John H. Hall



4008



4009

Gibbons

Start price
in CHF

- 4008** 1853 (Sept 1): 1 d. pale brick-red on blued paper, a used example with good to large margins all round, very lightly cancelled by CGH obliterator in black, reverse showing "Frame Variety". Scarce
Gi = £ 450.

Provenance: Collection John H. Hall Jnr.

1

120

- 4009** 1 d. brick-red on blued paper, a used example with good margins all round, very lightly cancelled by CGH obliterator in black. Shade classified by the late John Michael Gi = £ 450.

Provenance: Collection "Saldanha", Sotheby's, London, 29 Nov 1984.

1 var

120

4010

- 4010** 1 d. pale brick-red on blued paper, a used example with huge margins all round showing large portion of the adjoining stamp at base, very lightly cancelled by CGH obliterator in black. Superb Gi = £ 450.

1

160

4011



4012

- 4011** 1 d. pale brick-red on blued paper, a used pair with large margins all round, neatly cancelled by near complete strike of the CGH obliterator in black. Scarce so fine Gi = £ 900.

1

200

- 4012** 1 d. pale brick-red on blued paper, a used pair with good to large margins all round, very lightly cancelled by the CGH obliterator in black. Exceptionally fine and scarce thus Gi = £ 900.

1

220



View of Fort Beaufort



4013

Gibbons

Start price
in CHF

4013

1 d. pale brick-red on deeply blued paper, a used example with ample to large margins all round, on 1856 Soldier's Concessionary rate cover to Sevenoaks, Kent tied by CGH obliterator in black. The cover mailed endorsed from "Private Thos. Bidgood of the 45th (Nottinghamshire) Regt." at Grahamstown, countersigned by R. Miller, Capt. Commanding Detachment"; carried on the bark "Wellington" arriving at Cape Town (Feb 8, 1856) from Madras, bound for London where it arrived (April 13) with red London 'Paid' cds. Reverse with oval framed GRAHAMSTOWN datestamp (Feb 5) in red, CAPE TOWN / CAPE OF GOOD HOPE cds (Feb 9) in red and Sevenoaks cds of arrival in blue. Central file fold well away from the fine adhesive; Soldier's Letters bearing the first issue 1 d. adhesive are rarities, this being a very fine example. Cert. BPA (1989).

Note: In February 1856 the 45th Regiment's HQ was moved to Fort Beaufort and the detachments on the Buffalo River were relieved by troops of the 73rd Regiment; therefore it is likely that Pte. Bidgood was advising his correspondent of the move to Fort Beaufort. The letter could have only been carried by Private Ship as it was mailed during the period between April 1854 and September 1856 when the General Screw Shipping Co. abandoned their contract due to the Crimean War, with the Lindsay line contract starting on 9 September 1856. It is interesting to note that in the Joseph Hackmey collection (Edition D'Or XXII, published by Corinthila) there is a further Soldier's letter (illustrated on page 35) from this voyage of the "Wellington" - where the master of the ship, one W. Black, declined to charge his Captain's gratuity and the letter was, unusually, delivered without further charge.

Provenance: Collection "Franschhoek", Spink, London, 20 June 2012, lot 66.

1



3'000



Panorama of Port Elizabeth



4014

Gibbons

Start price
in CHF

- 4014** 1 d. pale brick-red on deeply blued paper, a block of four with touched to large margins and showing portions of an adjoining two stamps, used on 1855 entire letter from Port Elizabeth addressed to the shipping agents Messrs. Wm. Saxon & Co. in Cape Town tied by two strikes of the CGH obliterator in black. Reverse with oval framed PORT ELIZABETH despatch (June 13) and oval framed CAPE TOWN arrival (June 16) struck in red. The block has been lifted from the entire and replaced with small surface thinning at the base of the pair; nevertheless an entire of great rarity. Cert. Peter Holcombe (1986).

Note: Since the Mail Cart, Route Number 4, from Port Elizabeth to Cape Town generally took six days travelling via Somerset East, this entire would have been delivered by ship from Algoa Bay.

Provenance: Richard Johnson and Dr. Guy Dillaway.

1

1'200



4014A

Gibbons

Start price
in CHF

- 4014A** 1 d. deep brick-red on fairly deeply but evenly blued paper, left and hypotenuse margins good with the right margin significantly larger, cancelled by crisp CGH obliterator in black. This was the first Cape Triangular purchased by Richard Debney for this collection, bought from Ritchie Bodily at Stampex in March 1969.

1a

100

4015

- 4015** 1 d. deep brick-red on deeply blued paper, a magnificent used example showing portions of adjoining stamps on all three sides, lightly cancelled by the CGH obliterator in black. Choice and rare so fine
Gi = £ 500.

*Provenance: Collection "Soloman", Köhler, Wiesbaden, 2-5 June 1982, lot 19
Collection "Besançon", Corinphila sale 238, Zurich, 12 June 2019, lot 4008.*

1a

200

4016

- 4016** 1 d. brick-red on blued paper, a used pair in a "nut-brown" shade with clear to large margins all round, very lightly cancelled by the CGH obliterator in black Gi = £ 900.

1 var

200

4017

- 4017** 1 d. deep brick-red on blued paper, a used pair in a rich resonant shade with clear to large margins all round, crisply cancelled by the CGH obliterator in black Gi = £ 1'000.

1a

250



4018

Gibbons

Start price
in CHF

- 4018** 1 d. deep brick-red on heavily blued paper and clearly showing the "Frame Variety" on reverse (see Stevenson "The Triangular Stamps of the Cape", page 86), the pair with good to large margins all round and lightly cancelled by CGH obliterator in black. Shade classified by the late John Michael. A most attractive pair $G_i = \text{£ } 1'000$.
Note: Illustrated in D. Alan Stevenson "The Triangular Stamps of the Cape" on plate 14.
Provenance: Collection Eric C. Francis.

1a

250

4019

- 4019** 1 d. deep brick-red on heavily blued paper, a fine used pair in a resonant shade, good to huge margins all round, lightly cancelled by near complete CGH obliterator in black. Shade classified by the late John Michael. A delightful multiple $G_i = \text{£ } 1'000$.
Provenance: Collection Lord Vestey.

1a

250

4020

- 4020** 1 d. deep brick-red on blued paper, a used pair with good to large margins all round, very lightly cancelled by complete strike of the CGH obliterator in black. Superb and rare so fine $G_i = \text{£ } 1'000$.

1a

250



4021

Gibbons

Start price
in CHF

- 4021** 1 d. deep brick-red on heavily blued paper, a fine used strip of three in a resonant shade, good to large margins all round, lightly cancelled by CGH obliterator in black. Shade classified by the late Peter Holcombe. A superb strip. Signed Holcombe Gi = £ 1'500.

1a

400

Sir Maxwell Joseph



4022



R.A.G. Lee

- 4022** 1 d. pale brick-red on blued paper, a used block of four with clear to large margins all round, pronounced ivory vignettes on reverse, cancelled by two strikes of the CGH obliterator in black. A fine and attractive multiple Gi = £ 1'800.

Provenance: Collection Contini, Robson Lowe, London, 27 Jan 1960

Collection Sir Maxwell Joseph, Sotheby's, London, 28-29 Oct 1982, lot 204

Collection "Maximus", Sotheby's, London, 7 Sep 1989, lot 115.

1

⊞

500

Louise Boyd Dale



4023



Alfred F. Lichtenstein

- 4023** 1853 (Feb): Die Proof for the 4 d. value in stamp size pair with large even margins all round, engraved in black on India paper applied to thick cream card, lower stamp (Type B) lacking the "F" flaw in FOUR, and showing prominent spacing dot between impressions below "GO" of GOOD. A rare and extremely fine Proof.

Provenance: Collection Louise Boyd-Dale & Alfred F. Lichtenstein, Harmers, Washington DC,

25-26 Nov 1989, lot 13

Collection "Lady Hope", DF, Geneva, 19 Nov 1989, lot 20073.

2 Die Proof

(*)

2'500



4024



4025

Gibbons

Start price
in CHF

- 4024** 1853/63: Perkins Bacon Plate Proof for the 4 d. value in issued colour of blue, a fine pair printed on unwatermarked ungummed bleuté paper with blue showing through to back, good to large margins all round (Pos. X 7 B/A), merest hint of bend, a fine pair.

Note: Due to an extensive study by MaryAnn Bowman of these Proofs, originally believed to have been produced early in the printing process, it has been proved to show that they were made after prolonged use and repair to the 4 d. Plate. This was confirmed by the discovery of the 'Fifth Corner' horizontal block of four of these Proofs - this position was thought to exist only in the De La Rue printings.

2 Plate Proof

(*)

140

- 4025** Plate Proof for the 4 d. value in issued colour of blue, a fine pair printed on unwatermarked ungummed bleuté paper with blue showing through to the back, large margins all round and sheet marginal at right (Pos. VI 8 A/B), fresh and very fine.

Note: Due to an extensive study by MaryAnn Bowman of these Proofs, originally believed to have been produced early in the printing process, it has been proved to show that they were made after prolonged use and repair to the 4 d. Plate. This was confirmed by the discovery of the 'Fifth Corner' horizontal block of four of these Proofs - this position was thought to exist only in the De La Rue printings.

Provenance: Collection "Table Mountain", Cavendish, Derby, 20 June 2001, lot 176.

2 Plate Proof

田(*)

200



4026



4027

- 4026** Plate Proof for the 4 d. value in issued colour of blue, a pair printed on unwatermarked ungummed bleuté paper with blue showing through to the back, large even margins all round (Pos. X 1 B/A). A scarce pair. Cert. G. Oliva (1965).

Provenance: Collection "Besançon", Corinthila sale 231, Zurich, 30 Nov 2018, lot 6006.

2 Plate
Proofs

(*)

300

- 4027** Plate Proof for the 4 d. value in issued colour of blue, a fine block of four printed on unwatermarked ungummed bleuté paper with blue showing through to back, large margins all round (Pos. IX 5 B - 6 A), showing large spot of colour above "E" of PENCE of fourth stamp. Slightest ironed bend, otherwise superb.

Note: Due to an extensive study by MaryAnn Bowman of these Proofs, originally believed to have been produced early in the printing process, it has been proved to show that they were made after prolonged use and repair to the 4 d. Plate. This was confirmed by the discovery of the 'Fifth Corner' horizontal block of four of these Proofs - this position was thought to exist only in the De La Rue printings.

Provenance: Collection Sir Maxwell Joseph, Sotheby's, London, 28-29 Oct 1982, lot 138

Collection "Maximus", Sotheby's, London, 7 Sept 1989, lot 73.

2 Plate Proof

田(*)

300



4028

Gibbons

Start price
in CHF

4028 Plate Proof for the 4 d. value in issued colour of blue, a block of twelve printed on unwatermarked ungummed bleuté paper with blue showing through to back, good to very large margins all round (Pos. VII 1 A - 3B/VIII 1 A-3B). A superb and extremely rare multiple in outstanding quality with three Proofs from this block cross-referenced in the Debney 4 d. Plate reconstruction. Cert. G. Oliva (1965).

Provenance: Collection "Franschhoek", Spink, London, 20 June 2012, lot 7

"Besançon", Corinthila sale 238, Zurich, 12 June 2019, lot 4017.

2 Plate Proof ⌘(*)

2'000

The Cape of Good Hope triangular 4 d. blue was issued concurrently with the Great Britain 2 d. blue using the same inks. The London printing sheets were of 15 horizontal rows of 8 pairs, in each pair there are two slightly differing Types, known as Type A and B. The 4 d. blue has been successfully plated by the late Commander F.W. Collins AIEP of Winchester and his numbering system has been used throughout this sale: horizontal rows are represented by Roman numerals and the Vertical Rows by Arabic numbers.



4029



4030



4031

4029 1853 (Sept): 4 d. deep blue on deeply blue paper, a used pair (Pos. VI 8 A/B) with good to large margins all round, lightly cancelled by CGH obliterator in black Gi = £ 650+.

2

150

4030 4 d. deep blue on deeply blue paper, a used pair (Pos. I 6 A/B) with good to large margins all round, lightly cancelled by CGH obliterator in black. Exceptional and most attractive Gi = £ 650+.

2

180

Provenance: Collection "Cawardine".

4031 4 d. deep blue on deeply blue paper, a pair (Pos. II 7 A/B) with good to large margins all round, crisply cancelled by CGH obliterator in black. A choice and attractive pair Gi = £ 650.

2

180



4032



4033



R.A.G. Lee

Gibbons

Start price
in CHF

- 4032** 4 d. deep blue on deeply blued paper, a used pair (Pos. XI 1 B/A) with good to large margins all round and showing portion of adjoining stamp at right, lightly cancelled by CGH obliterator in black $G_i = £ 650+$.
- 4033** 4 d. deep blue on deeply blued paper, a used pair (Pos. VI 8 A/B) with good to large margins all round and showing portion of adjoining stamp at left and part of sheet marginal lined watermark at right, lightly cancelled by CGH obliterator in black $G_i = £ 650+$.

2

180

Provenance: Collection "Maximus", Sotheby's, London, 7 Sept 1989, lot 166.

2

180



4034

- 4034** 4 d. deep blue on deeply blued paper, a used block of four of fine colour (Pos. XIV 8 B - XV 8 A) and large margins all round, lightly cancelled by CGH obliterator in black $G_i = £ 1'300+$.

2

田

400



Louise Boyd Dale



4035



Alfred F. Lichtenstein

- 4035** 4 d. deep blue on deeply blued paper, a used block of four of fine colour (Pos. XI 7 B - 8 A) and large margins all round, showing the sheet marginal watermark at right, lightly cancelled by CGH obliterator in black. Superb and most attractive $G_i = £ 1'300+$.

Provenance: Collection Louise Boyd Dale & Alfred F. Lichtenstein, Harmers, Washington DC, 25-26 Nov 1989, lot 102.

2

田

400



Sir Maxwell Joseph



4036

Gibbons

Start price
in CHF

- 4036** 4 d. deep blue on deeply blued paper, a used block of six (Pos. XIII 4 B - 6 A), with ample to enormous margins all round, top left corner chamfered, cancelled by three strikes of CGH obliterator in black, a fine and most attractive multiple $G_i = £ 2'100+$.

Provenance: Collection H.E. Levitt

Collection Sir Maxwell Joseph, Sotheby's, London, lot 251

Collection John Tolbutt, Harmers, London, 11 June 2002, lot 36.

2

田

500



Louise Boyd Dale



4037



Alfred F. Lichtenstein

- 4037** 4 d. deep blue on deeply blued paper, a used block of six (Pos. I 1 A - 3 B), with ample to large margins all round, lightly cancelled by CGH oblitors in black, a fine and most attractive multiple $G_i = £ 2'100+$.

Provenance: Collection Louise Boyd Dale & Alfred F. Lichtenstein, Harmers, Washington DC, 25-26 Nov 1989, lot 103.

2

田

600



4038

- 4038** 4 d. deep blue on deeply blued paper, a single example (Pos. XIV 7 B) with good margins all round, used on 1854 cover from Cape Town to Southampton tied by CGH obliterator in black, paying the port charge of 4 d. only. Carried on the private ship "Margaret Milne" with CAPE TOWN / CAPE OF GOOD HOPE cds of despatch in red (Aug 23) and Southampton cds of receipt (Nov 12) in blue where charged "8 d." due in manuscript. A few trivial wrinkles to the thin paper envelope but a scarce usage.

Provenance: Collection "Saldanha", Sotheby's, London, 29 Nov 1984

Collection Lord Vestey.

2 or 4

✉

400



4039

Gibbons

Start price
in CHF

- 4039** 4 d. deep blue on deeply blue paper, a pair (Pos. VII 1 A/B) with generally huge margins all round, used on 1854 entire letter from Somerset East via Cape Town to Finchley, Middlesex tied by CGH obliterator in black, paying the internal single rate of 4 d. and the port charge of 4 d. Carried on the private schooner "Siren" with reverse showing oval framed CAPE TOWN datestamp (Sept 18) and Cape Town cds in red and London arrival cds in red (Nov 29) and charged "8 d." to pay in manuscript. The stamps, slight creasing, carefully lifted to check the blueing of the paper, a fine and most attractive entire.

Provenance: Collection "Bonaventure", Spink, London, 9 Sept 1993, lot 90.

2

**300**

4040

- 4040** 4 d. deep blue on deeply blue paper, a pair (Pos. V 6 A/B) with ample to large margins all round, used on 1854 single rate cover from Grahamstown to Braintree, Essex tied by CGH obliterator in black, the 8 d. franking paying the internal rate of 4 d. and the port charge of 4 d. Reverse with oval framed GRAHAMSTOWN despatch (Feb 14) in red and CAPE TOWN transit cds (Feb 18); carried on the General Screw Steam Shipping Company "R.M.S. Hydaspes" from Cape Town (Feb 20) via Plymouth with London cds on reverse (April 21) in red and charged "1/-" in manuscript to pay. Insignificant corner bend but a scarce and most attractive cover.

2

**750**



Ivory and skins for sale at market in Grahamstown



4041

Gibbons

Start price
in CHF

- 4041** 4 d. deep blue on deeply blued paper, a strip of three (Pos. VII 3 A - 4 A) with clear to large margins all round and portion of adjoining stamp at right; top stamp (Pos. VII 3 B) showing heavy scratches in "NCE" of PENCE; used on 1854 double rate cover from Grahamstown to Braintree, Essex via Cape Town, tied by CGH obliterations in black (8 d. internal postage + 4 d. port fee). Reverse with oval framed GRAHAMSTOWN despatch in red (Dec 28) and endorsed at top "By first vessel" and "P. Paid" at lower left. Carried on private bark "Serenus" arriving at Cape Town (Jan 1) and thence to London (March 2, 1855) with Braintree arrival of the following day and charged "1/4 d." due to pay in manuscript. An extremely scarce first issue franking.

Provenance: Collection Lawrence L. Shenfield, retained by the vendor; and thus not present in the 1975 auction.

2



850

1853 (July), 1d. and 4d. printed by Perkins Bacon on slightly blued paper



4042

Gibbons

Start price
in CHF

- 4042** 1 d. pale orange-brown on slightly blued paper, a fine used example of resonant colour with good to large margins all round, lightly cancelled by the Grahamstown barred roller in black; shade classified by Commander F.W. Collins. Tiny corner bend but scarce Gi = £ 350+.

3 var

150

4043



4044

- 4043** 1 d. deep brick-red on slightly blued paper, with strong Ivory figure on reverse, a used pair with good to huge margins on three sides and showing portion of adjoining stamp at left, slight ironed bend at right, lightly cancelled by CGH obliterator in black. A most attractive pair of superb appearance Gi = £ 700+.
Provenance: Collection "Maria de La Queillerie", Harmers, London, 18-19 May 1970, lot 65
Collection "Besançon", Corinthila sale 238, Zurich, 12 June 20129, lot 4011.

3 var

350

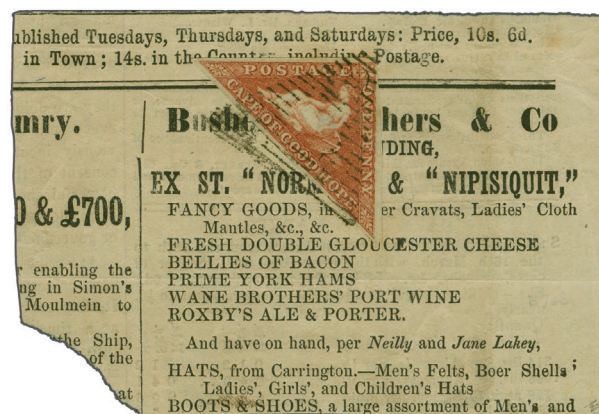
- 4044** 1 d. brick-red on slightly blued paper, a fine block of four of fresh colour with large even margins all round, lightly cancelled by superb strike of the Grahamstown roller in black. Superb Gi = £ 1'400.
Provenance: Collection Louise Boyd Dale & Alfred F. Lichtenstein, Harmers, Washington DC, 25-26 Nov 1989, lot 105
Collection "Samos", Ivy, Shreve & Mader, London, 19-20 June 1991, lot 229.

3

田

500

Louise Boyd Dale



4045



Alfred F. Lichtenstein

- 4045** 1 d. brick-red on slightly blued paper, a single example with clear to large margins all round, used on large portion of 17 March 1859 "Cape Argus" Newspaper, neatly tied by CGH obliterator in black. Sold together with a digital photograph of the front of the original Newspaper from the South African National Library in Cape Town, detailing the arrival of the mail steamer "R.M.S. Norman" and the private ship "Nipisiquit" from London - the "Norman" arrived at Cape Town on 15 March 1859 and the "Nipisiquit" on the following day. Most attractive and very rare.
Provenance: Collection Louise Boyd Dale & Alfred F. Lichtenstein, Harmers, Washington DC, 25-26 Nov 1989, lot 227
Collection Mrs. Ad. Indhusophon, Spink, London, 26 May 1999, lot 47
Collection Dr. James Foght, Spink, London, 23 Sept 2004, lot 526.

3

△

500



4046



'Earl of Hardwicke'

Gibbons

Start price
in CHF

- 4046** 1 d. brick-red on slightly blued paper, two examples, formerly a pair, one imperceptibly touched at top, used on registered 1857 singler rate cover from Alice to Dunkeld, Scotland with 1855/63 toned 4 d. deep blue (Pos IX 8 B) tied by weak CGH obliterations in black. Endorsed "Registered" at top in manuscript with corresponding "6" in manuscript denoting the registration fee was prepaid in cash; carried from Alice with oval framed despatch (Oct 2) in red, oval framed Cape Town transit (Oct 10) in red and circular datestamp of despatch (Oct 21) by private ship "Earl of Hardwicke" to London (Dec 10) where struck with fine "■ / REGISTERED" in red. The reverse with further strikes of Perth (Dec 11), Methven (Dec 12), Dunkeld (Dec 14) cds's and undated circular "Logierait" handstamp of arrival. Despite minor imperfections an exceedingly rare and early registered usage.

Provenance: R. Bodily

Collection "Lady Hope", DF, 19 Nov 2003, lot 20134

Collection Alan Holyoake, Spink, London, 6 Oct 2021, lot 196.

3+6



1'000



4047



4048

- 4047** 1 d. brown-red on slightly blued paper, a used pair with good to large margins all round, showing portion of adjoining stamp at top, lightly cancelled by near complete CGH obliterator in black. Slightest ironed bend of no importance, a most attractive pair Gi = £ 750+.

3a

200

- 4048** 1 d. brown-red on slightly blued paper, a fine used pair of delightful colour with large even margins all round, lightly cancelled by CGH obliterator in black. Superb Gi = £ 750.

Provenance: Collection Louise Boyd Dale & Alfred F. Lichtenstein, Harmers, Washington DC, 25-26 Nov 1989, lot 110

Collection "Samos", Ivy, Shreve & Mader, London, 19-20 June 1991, lot 231.

3a

250

- 4049** 1 d. pale deep brick-red on blued paper, two equally fine examples in slightly paler shades, cancelled by CGH obliterations in black; together with a further 1 d. pale brick-red on slightly blued paper, with large margins and showing portion of adjoining stamp at base; a fine group Gi = £ 1'250.

(Photo = www)

1a+1+3

350



4050

Gibbons

Start price
in CHF

- 4050** 4 d. blue on slightly blued paper, a magnificent used example (Pos. XV 8 A), sheet corner marginal from lower right of the sheet, huge margins all round and showing portion of the adjoining stamp at base, lightly cancelled by CGH obliterator in black. Superb and of great rarity $G_i = £ 180++$.
Provenance: Collection Ing. Pietro Provera, Corinthila sale 260, Zurich, 26 Jan 2021, lot 5455.

4

1'000



4051



4052



4053

- 4051** 4 d. deep blue on slightly blued paper, a pair (Pos. IX 6 B/A) with good margins all round, used on 1854 single rate cover endorsed "prepaid" to London, tied by CGH obliterator in black (4 d. internal + 4 d. port fee). Reverse with oval framed GRAHAMSTOWN despatch datestamp in red (Feb 11) and Cape Town cds (Feb 16), carried on "R.M.S. Hydaspes" of the General Screw Shipping Co. with London arrival cds (April 21) on reverse and charged "1/-" due to pay. Flap missing and slightly cleaned but an attractive cover.

Provenance: Collection R. Johnson and Dr. Guy Dillaway.

4



250

- 4052** 4 d. deep blue on slightly blued paper, a pair (Pos. I 2 A/B) with close to good margins all round, used on 1856 single rate cover endorsed "England per Devastation" to West Wittering, Sussex, tied by CGH obliterator in black (4 d. internal + 4 d. port fee). Reverse CAPE TOWN / CAPE OF GOOD HOPE cds (July 17) in red and carried on "H.M.S. Devastation" of the Royal Navy with Chichester arrival cds (Sept 3) in blue on reverse and charged "1/-" due to pay. The stamps lifted for checking and hinged back into place, a charming cover.

Note: The Lindsay Line Shipping contract was signed six days after this cover was delivered. H.M.S. Devastation, a paddle sloop launched in 1841, sailed from Simons Bay on 18 July 1856 under Captain E. Marshall.

Provenance: Collection "Besançon", Corinthila sale 238, 12 June 2019, lot 4030.

4



250

- 4053** 4 d. deep blue on slightly blued paper, a pair (Pos. III 5 A/B) with good even margins all round, used on 1854 single rate cover to Dublin, Ireland endorsed "per first mail Steamer to England", cancelled by CGH obliterator in black (4 d. internal + 4 d. port fee). Reverse with oval framed GRAHAMSTOWN despatch datestamp in red (Feb 14) and Cape Town cds (Feb 18), carried on "R.M.S. Hydaspes" of the General Screw Shipping Co. with London cds and Dublin arrival (April 22) cds in red on reverse and charged "1/-" due to pay. Slight soiling but an attractive cover.

Provenance: Collection Sir Henry Tucker; Harmers, London, 20 Nov 1979, lot 32

Collection R. Johnson and Dr. Guy Dillaway.

4



300

1855/63, printed by Perkins Bacon on cream toned to white paper



4054

Gibbons

Start price
in CHF

4054

1 d. rose, a used example with good margins all round and showing portion of adjoining stamp at base, on 1860 Soldier's Concessionary rate cover from Grahamstown to London tied by light CGH obliterator in black; the cover endorsed at top "From Pte. A. Hiscock, 2 Co. / 13th Light Infantry" (The Somerset Light Infantry - Prince Albert's), countersigned by Colonel Arthur Horse commanding Officer of the Regiment which campaigned at the Cape and surrounding territories from 1859-1863. Reverse with oval framed GRAHAMSTOWN datestamp in red (Jan 14) and CAPE TOWN / CAPE OF GOOD HOPE cds in red (Jan 19). Carried on the Union Steam Ship Co.'s "R.M.S. Celt" with 'London / Paid' arrival cds (Feb 28) in red. Small imperfections but a rare and attractive cover. Signed Holcombe. Cert. Holcombe (1985).

Provenance: Collection Dr. Guy Dillaway.

5a



1'200



4055



Sir Maxwell Joseph

4055

1 d. rose on cream toned paper, a single example together with 4 d. blue pair (Pos. VI 1 A/B), all with clear to mostly very large margins, used on 1862 cover from Cape Town to Amsterdam endorsed "Per Mail Steamer "Cambrian" via England", tied by CGH obliterations in black. Reverse with CAPE TOWN / CAPE OF GOOD HOPE cds in red (Feb 22) and carried on the Union Steam Ship Company's steamer with 'London / Paid' cds IN RED on obverse tying the 1 d. rose (March 31) and manuscript "8" pence credit to GB. Reverse with Amsterdam arrival cds (April 2) and Postman's delivery number '42' and charged "20" cents due in manuscript. A magnificent and extremely rare cover.

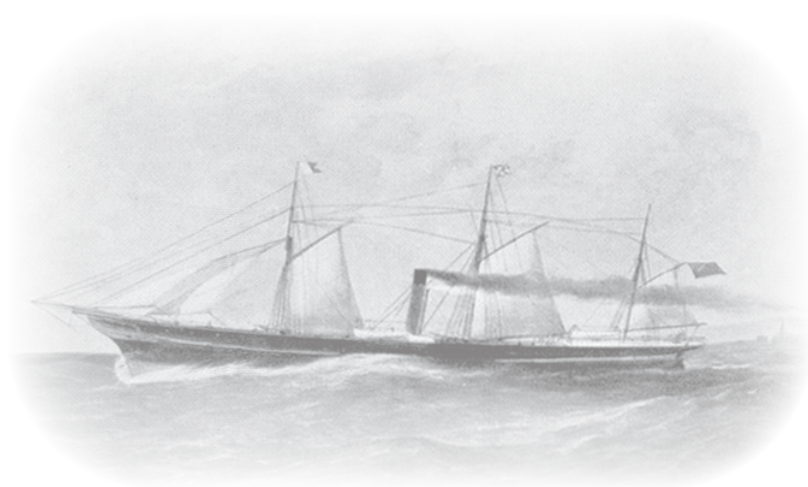
Provenance: Collection H.E. Levitt

Collection Sir Maxwell Joseph, Sotheby's, London, 28-29 Oct 1982, lot 337.

5a+6a



2'500



R.M.S. 'Athens'



4056

Gibbons

Start price
in CHF

4056 4 d. blue on white paper, a used example (Pos. XII 6 A) with clear to large margins, together with two 1 d. rose on cream paper in differing shades also with large margins all round, on 1860 cover endorsed "Per R.M.S. Athens" to Romsey, Hampshire tied by three strikes of the CGH obliterator in black and by '5' rate credit in red manuscript. Carried from the Cape Union Steam Ship Company "R.M.S. Athens" with reverse showing CAPE TOWN / CAPE OF GOOD HOPE circular datestamp (April 21) in red and Romsey arrival cds (May 26) in black. Obverse with 'London / Paid' transit cds in red (May 25). A splendid and most attractive cover.

Note: The Royal Mail Ship 'Athens' was an iron steam screw barque of 739 tons, built in 1856 by Denny of Dumbarton and operated by the Union shipping company. It was wrecked between Mouille Point and Green Point on 17 May, 1865 at night, after the boiler fires were extinguished by heavy seas during a north-west gale whilst trying to steam out of Table Bay. The wreck is still visible today.

Provenance: This correspondence of fifteen covers addressed to Francis Taylor in Romsey was first offered in RL, Bournemouth, 7 July 1972, this being lot 711

Collection "Besançon", Corinthila sale 231, Zurich, 30 Nov 2018, lot 6039.

5a+6a

**2'500**



4057



4058

Gibbons

Start price
in CHF

- 4057** 1 d. deep rose-red on cream toned paper, an unused example with large margins all round and fine fresh colour, small traces of original gum. An extremely rare stamp unused. Signed A. Diena. Cert. RPSL (1952) Gi = £ 1'300.

Provenance: Collections Irving and Israelow.

5b

*

400

- 4058** 1 d. deep rose-red on cream toned paper, an unused example in a rich shade with ample to large margins all round, some adherence on part og. A rare stamp unused Gi = £ 1'300.

5b

(*)

400

4059



4060

- 4059** 1 d. deep rose-red on cream toned paper, a used example in a rich shade with ample to large margins all round, chamfered corner at right and showing portion of adjoining stamp at base, lightly cancelled by CGH obliterator in black. A fine example of a scarce stamp Gi = £ 375.

Provenance: Collection "Bonaventure", Christie's, London, 9 Sept 1993, lot 120.

5b

120

- 4060** 1 d. deep rose-red on cream toned paper, a used example in a pinkish shade with huge margins all round, chamfered corners at base and showing portions of adjoining stamps at left and at base, lightly cancelled by CGH obliterator in black. Superb. Cert. RPSL (1973) Gi = £ 375.

5b

150

John H. Hall



4061



4062



Mrs. Ad Indhusophon

- 4061** 1 d. deep rose-red on cream toned paper, a used pair with good to large margins all round, lightly cancelled by CGH obliterator in black. Scarce Gi = £ 750+.

Provenance: Collection John H. Hall Jnr.

5b

250

- 4062** 1 d. deep rose-red on cream toned paper, a used block of four of rich colour, clear to mostly large margins all round with portion of adjoining stamp at right, cancelled by two strikes of CGH obliterator in black. A charming and scarce multiple Gi = £ 1'500+.

Provenance: Collection Louise Boyd Dale & Alfred F. Lichtenstein, Harmers, Washington DC, 25-26 Nov 1989, lot 147

Collection Mrs. Ad Indhusophon, Spink, London, 26 May 1999, lot 60.

5b

田

500



Louise Boyd Dale



4063



Alfred F. Lichtenstein

Gibbons

Start price
in CHF

- 4063** 1 d. deep rose-red on cream toned paper, a used pair, together with 6 d. deep rose-lilac in a used pair, on small part piece, each pair with large margins all round and cancelled by CGH obliterations in black, the 6 d. pair also cancelled by part red cancel. Some minor bends and minimal ageing but a rare usage.
Provenance: Collection Louise Boyd Dale & Alfred F. Lichtenstein, Harmers, Washington DC, 25-26 Nov 1989, lot 197
Collection "Franschhoelk", Spink, London, 20 June 2012, ex lot 139.

5b+7b

△

200

4064

- 4064** 4 d. deep blue on white paper, an unused pair (Pos. XII 5 B/A), with large even margins all round, of fine rich colour, large part og. Scarce and fine multiple. Cert. RPSL (1977) $G_i = £ 2'800+$.
Provenance: Corinthila sale 60, Zurich, 24-29 April 1978, lot 5400.

6

*

850

4065



C. Emerson Huston

- 4065** 4 d. deep blue on white paper, a used block of six (Pos. XV 3 B - XV 5 A), sheet marginal from base of sheet (this block would adjoin the "Fifth Corner" block of four), with good to large margins all round and sheet marginal at base showing complete "POSTAGE" watermark in margin, small thin spot and left pair with vertical crease; reverse showing Stevenson's / Collins's notations; a generally fine and rare multiple $G_i = £ 660++$.
Provenance: Collection Mrs. Ida Rothschild, Harmers, London, 15 April 1957, lot 179
thereafter part of the reconstruction made by Commander F.W. Collins from stamps supplied by C. Emerson Huston, Harmers, London 26-28 June 1961, lot 531
Collection "Medina", Spink, London, 20 March 2013, lot 76.

6

田

350



4066



Dr. Albert Louis

Gibbons

Start price
in CHF

4066

4 d. deep blue on white paper, a fine used example (Pos. 12 B) with close to good margins all round, used on 1860 cover endorsed "Per first Ship via Mauritius & Australia" tied by CGH triangular obliterator in black. Reverse with circular CAPE TOWN / CAPE OF GOOD HOPE datestamp in red (Aug 27) and obverse with circular "AUCKLAND / NEW ZEALAND" arrival datestamp (Jan 25, 1861). Carried on the "Eagle", and trans-shipped to the P&O Steamer "Bihar" at Galle, thence via Melbourne (Dec 14), Sydney (Dec 17) and thence carried by the Inter-Colonial Royal Mail Steam Packet Co. Just eight covers bearing Cape Triangulars are recorded to New Zealand. A fine and extremely scarce cover to an extremely rare destination.

Note: The addressee, Falconer Larkworthy (1833-1928), was born in Weymouth, UK and at the age of 16 joined a London firm of merchants trading with India. He was posted to Mauritius and then to Cape Town and thereafter to Victoria where he gained Banking experience with the Oriental Banking Corporation in the goldfields in North East Victoria. In 1860 he was transferred to manage the Oriental's branch in Auckland, New Zealand. Once gold discoveries were made in May 1861 in Otago, Larkworthy stayed on using the experience he had gained in Victoria to facilitate a gold export business for the Oriental Bank. He returned to London, joining the Commercial Union Assurance Co. in 1863 as a Director.

Provenance: Collection Dr. Albert Louis, Corinthila sale 222, Zurich, 28 May-1 June 2018, lot 2095.

6



2'500



4067

4067

4 d. deep blue on white paper, a used sheet marginal pair (Pos. XII 1 B/A), margins good to large, on 1858 double rate cover to Cape Town tied by CGH obliterator in black. Reverse with oval framed UITENHAGE despatch datestamp in red (March 2) and oval framed CAPE TOWN arrival datestamp (March 4) also in red. A charming and scarce cover. Signed Pfenninger.

Provenance: Corinthila sale 148, Zurich, 21-24 Feb 2007, lot 1400.

6



500



4068



Sir Maxwell Joseph

Gibbons

Start price
in CHF

- 4068** 4 d. blue on white paper, the unused block of twelve (Pos. IX 1 B - 2 A / XI 1 B - 2 A), of lovely rich colour with large margins all round, showing sheet marginal wmk. at left, tiny scissor cut in margin only at top, central block with light horizontal crease and some insignificant aging to five stamps not affecting the dramatic appearance of this splendid large multiple, fresh and very fine, with large part og. Gi = £ 13'200+.

Provenance: Collection H.E. Levitt

Collection Sir Maxwell Joseph, Sotheby's, 28-29 Oct 1982, lot 377

Collection 'Bonaventure', Spink, 9 Sept 1993, lot 130

collection "Besançon", Corinthila sale 238, Zurich, 12 June 2019, lot 4046.

6a 田*

1'750



4069



4070



4071

- 4069** 4 d. blue on white paper, an unused example (Pos. XIII 7 B) with good to large margins all round, of fine fresh colour, without gum. A scarce stamp unused Gi = £ 1'100.

Provenance: Collection John H. Hall Jnr., still with his original hinge marked "J.M.B (Bartels), 1922, \$4.70".

6a (*)

200

- 4070** 4 d. blue on white paper, a used example (Pos. XIV 6 A) with good to large margins all round, neatly cancelled solely by "PORT ELIZABETH / CAPE COLONY" cds in black. Scarce thus.

6a

100

- 4071** 4 d. blue on white paper, a used corner marginal example (Pos. I 1 A) with good to large margins all round, showing sheet marginal watermark along POSTAGE, lightly cancelled in red. Rare thus.

Provenance: Collection John H. Hall Jnr. (noted on hinge as purchased for \$11.25c. in 1925).

6a

150



4072



4073



4074

Gibbons

Start price
in CHF

- 4072** 4 d. blue on white paper, a used example (Pos. VI 1 B) with good to large margins all round, lightly cancelled in red. Rare thus.

Provenance: Collection John H. Hall Jnr. (noted on hinge as purchased for \$20 from Sefi, Pemberton & Co. in 1927).

6a

150

- 4073** 4 d. blue on white paper, a used example (Pos. I 1 B) in a pale shade, ample to large margins on two sides, neatly cancelled by large triangular CGH obliterator in red. Rare thus.

Provenance: Collection John H. Hall Jnr.

6a

150

- 4074** 4 d. blue on white paper, a used example (Pos. I 6 B) in a pale shade, good to large margins on two sides, neatly cancelled by large triangular CGH obliterator in red. Rare thus.

Provenance: Collection John H. Hall Jnr.

6a

150



4075



4076



4077

- 4075** 4 d. blue on white paper, a magnificent used example (Pos. I 1 A), sheet corner marginal from top left of the sheet, huge margins all round and showing portion of the adjoining stamp at base, lightly cancelled by CGH obliterator in black. Superb and of great rarity Gi = £ 90++.

6a

500

- 4076** 4 d. blue on white paper, a used pair (Pos. IX 1 B/A), good to large margins all round and showing the sheet marginal lines at left, lightly cancelled in black. Fresh and very fine Gi = £ 180+.

Provenance: Collection John H. Hall Jnr., still with his original hinge marked "Burger, 1925, \$13".

6a

100

- 4077** 4 d. blue on white paper, a fine used pair (Pos. II 8 A/B), with huge even margins all round and trace of adjoining stamp at left, lightly cancelled by CGH obliterator in black. Superb Gi = £ 180+.

6a

100



4078



4079

- 4078** 4 d. blue on white paper, a used block of four (Pos. III 5 A - 6 B), with large to enormous margins all round and some burr rubbing of the blue ink in margins, small age spot at upper left otherwise a delightful multiple Gi = £ 360+.

Provenance: Collection Louise Boyd Dale & Alfred F. Lichtenstein, Harmers, Washington DC, 25-26 Nov 1989, lot 151 (catalogued as deep blue).

6a

田

150

- 4079** 4 d. blue on white paper, a used block of four (Pos. I B - 2 A), with large to enormous margins all round and some burr rubbing of the blue ink in margin at base, showing the sheet marginal watermark lines at left, small age spot at upper right otherwise a delightful multiple. Signed A. Diena. Cert. BPA (1994) Gi = £ 360+.

6a

田

160



4080



4083

Gibbons

Start price
in CHF

- 4080** 4 d. blue on white paper, a block of four in vertical format (Pos. IX 8 B - X 8b A), with good to large margins all round, showing portion of adjoining stamp at base and sheet marginal watermark lines at right. A most attractive multiple. Signed A. Diena Gi = £ 360+.

Provenance: Collection "Besançon", Corinthila sale 238, Zurich, 12 June 2019, lot 4029.

6a

田

160

Alfred H. Caspary



4081



4082

- 4081** 4 d. blue on white paper, a used block of four (Pos. IV 5 A - 6 B), with large to enormous margins all round and showing portion of adjoining stamps at top and at right, some burr rubbing of the blue ink in lower margin, a delightful multiple that would adjoin the previous lot. Signed A. Diena Gi = £ 360+.

Provenance: Corinthila sale 107, Zurich, September 1998, lot 5173.

6a

田

175

- 4082** 4 d. blue on white paper, a used triangular block of four (Pos. V 6 A - 7 A) of fine fresh colour and with good to very large margins all round, showing portion of adjoining stamp at right, lightly cancelled by CGH obliterations in black. Ironed crease in margin only at lower left but a most attractive and rare multiple Gi = £ 360+.

Provenance: Collection Alfred H. Caspary, Harmers, New York, 24-28 Feb 1958, lot 269 (as an irregular block of six).

6a

田

250

- 4083** 4 d. blue on white paper, a used block of six (Pos. V 7 A - VII 7 B), with ample to large margins all round, lightly cancelled by CGH obliterations in black, two age spots on reverse but a fine and scarce vertical multiple Gi = £ 540+.

6a

田

180



4084



4085

Gibbons

Start price
in CHF

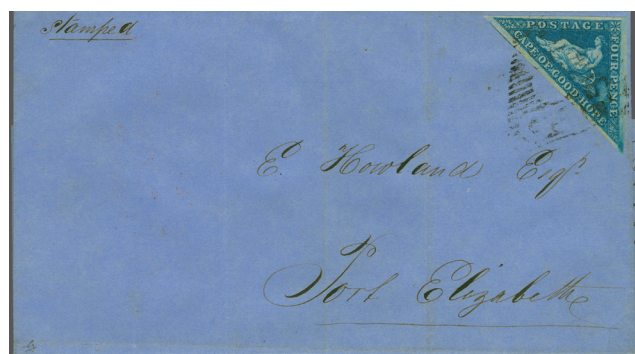
- 4084** 4 d. blue on white paper, a single example (Pos. II 5 B) with large margins all round, used on 1860 cover to Beaufort West tied by CGH obliterator in black, with reverse showing oval framed ALIWAL despatch datestamp (Feb 6) struck in red. File fold well away from the fine adhesive, an attractive cover.
Note: The 4 d. adhesive (Position II 5 B) shows scatches below the lower right corner more extensively than that shown in the Commander F.W. Collins diagram.
Provenance: Collection Lord Vestey, lot 1098.

6a

120

- 4085** 4 d. blue on white paper, a used example (Pos. XIII 7 B) with clear to large margins, on 1857 cover with embossed "From Mossel Bay" in pink at top left, mailed from Aliwal (Mossel Bay) to Revd. George Morgan (of St. Andrew's Church), Cape Town tied by CGH obliterator in black. Reverse with oval framed ALIWAL datestamp (March 5) and oval framed CAPE TOWN arrival (March 7) both struck in red. Slightest ageing but a most attractive cover.

6a

140

4086



4087

- 4086** 4 d. blue on white paper, a single example (Pos. I 4 B) with large margins all round, used on 1859 cover to Port Elizabeth endorsed "Stamped" in manuscript, tied by CGH obliterator in black; with reverse showing oval framed GRAHAMSTOWN despatch datestamp (Aug 4) and oval framed PORT ELIZABETH arrival (Aug 5), each struck in red. File folds well away from the fine adhesive, an attractive cover.
- 4087** 4 d. blue on white paper, a single example (Pos. XIV 6 B) with good to large margins all round, used on 1860 cover to Port Elizabeth tied by CGH obliterator in black, with reverse showing oval framed CRADOCK despatch datestamp (Dec 10) and oval framed PORT ELIZABETH arrival (Dec 13), each struck in red. File fold well away from the fine adhesive, an attractive cover.

6a

150

6a

150

4088

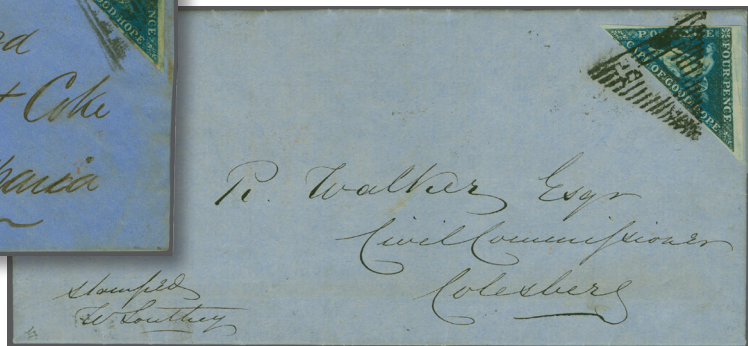
- 4088** 4 d. blue on white paper, a single example (Pos. XIV 5 A), with good margins all round, used on 1861 cover to Port Elizabeth tied by light CGH obliterator in black. Reverse with oval framed RICHMOND despatch datestamp in black (Oct 8) and oval framed PORT ELIZABETH arrival (Oct 11) in red.

6a

150



4089



4090

Gibbons

Start price
in CHF

- 4089** 4 d. blue on white paper, a single example (Pos. V 6 B), used on 1864 cover to the "Reverend Wm. Holford, Mount Coke, British Kaffaria", tied by CGH obliterator in black. Reverse with slight flap fault and oval framed GRAHAMSTOWN despatch datestamp (March 1) in red. Small closed tear at top but an unusual destination - Mount Coke was near King Williams Town in the Eastern Cape, where a Methodist Missionary building had been destroyed in the Kaffir Wars in 1839 and was later rebuilt. British Kaffaria was established as a buffer state on 17 December 1847. The area was not annexed by the Cape but was administered as a separate Crown dependency by the Governor of Cape Colony in his capacity of High Commissioner for South Africa, annexation of British Kaffaria eventually took place on 17 April 1866.

Provenance: Collection "Besançon", Corinthila sale 238, Zurich, 12 June 2018, lot 4127.

6a

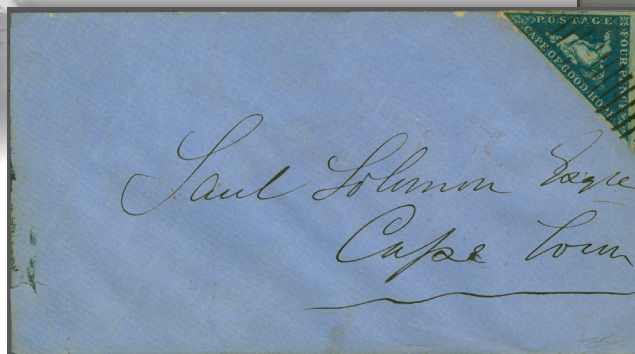
200

- 4090** 4 d. blue on white paper, a single example (Pos. IX 8 A) with good to large margins, used on 1858 folded Parliamentary Printed Circular "Some of Mr. Wm. Southey's Views and Opinions on Public Matters" from Graaff Reinets to Colesberg, tied by CGH obliterator in black. The cover endorsed at lower left "Stamped, Wm. Southey" in manuscript and reverse showing oval framed GRAAFF REINET despatch datestamp (Aug 28) in red and oval framed COLESBERG arrival datestamp in black (Aug 30). Despite the somewhat grim reading of Mr. Southey's appeal, a fine and unusual usage.

6a

200

Sir Henry Tucker



4091



4092

- 4091** 4 d. blue on white paper, a single example (Pos. III 5 B), with good to large margins all round, used on 1861 cover addressed to the printer of the "Woodblock" issue Saul Solomon in Cape Town (Soloman was also the publisher of the Cape Argus and a prominent member of the Cape Parliament), tied by rare usage of the GRAHAMSTOWN "Roller Cancellation" in black. Reverse with oval framed BEDFORD despatch datestamp ((June 16) and oval framed CAPE TOWN arrival datestamp (June 20) each struck in red. Some ageing and bleach spot but a rare and most appealing cover mailed during the "Woodblock" period of use.

Provenance: Collection Sir Henry Tucker; Harmers, London, 20 Nov 1979, lot 94.

6a

300

- 4092** 4 d. blue on white paper, a used example (Pos. I 1 B) with good margins all round, on 1855 cover to the Honourable Treasurer General in Natal, tied by fine strike of CGH obliterator in black. Reverse with 'CAPE TOWN / CAPE OF GOOD HOPE' despatch cds in red (March 29) and obverse with circular "NATAL" arrival in blue (April 6). Minor staining but a scarce and most attractive cover.

Provenance: Collection "Besançon", Corinthila sale 238, Zurich, 12 June 2019, lot 4051.

6a

350



Louise Boyd Dale



4093



Alfred F. Lichtenstein

Gibbons

Start price
in CHF

4093 4 d. blue on white paper, a single example (Pos. III 2 B), with good to large margins all round, used on 1861 cover endorsed "Stamped" to Port Elizabeth, tied by rare usage of the GRAHAMSTOWN "Roller Cancellation" in black. Reverse with oval framed GRAHAMSTOWN despatch datestamp (May 9) and oval framed PORT ELIZABETH arrival (May 10) both struck in red. Mailed during the 'Stamp Shortage' period whilst the provisional Woodblock issue was in use. An extremely rare usage of this cancellation on a letter of excellent pedigree. Cert. BPA (1990).

Provenance: Collection Louise Boyd Dale & Alfred F. Lichtenstein, Harmers, Washington DC, 25-26 Nov 1989, lot 241

Collection "Samos", Ivy, Shreve & Mader, London, 19-20 June 1991, lot 235

Collection "Besançon", Corinthila sale 231, Zurich, 30 Nov 2018, lot 6048.

6a

750

4094



Fanny Knight

4094 4 d. blue on white paper, a used example (Pos. I 4 B) with good even margins all round, applied over Great Britain 1 d. pink postal stationery envelope and mailed to Ashford, Kent tied by CGH obliterator in black. Manuscript on reverse "Cape Town, Cape of Good Hope, Sept 30th, reached this yesterday" and corresponding CAPE TOWN / CAPE OF GOOD HOPE despatch cds in red (Sept 30, 1856). Carried on the "Bahiana" from the Cape with framed "LIVERPOOL / SHIP" datestamp in black (Nov 5) and Ashford arrival (Nov 6) in blue. Readdressed on arrival to Rome with manuscript "Redirected at Ashford", and struck with scarce instructional "FIRST POSTAGE / NOT PAID" in black. Straight line VIA DI MARE in red and Rome arrival cds (Nov 15) in red, where charged 52 bajocchi due to pay in manuscript. Small part of flap missing on reverse but an extremely rare and most unusual cover: the sole recorded Cape Triangular cover to the Papal States.

Note: The addressee, Lady Knatchbull, (1793-1882), known as Fanny Knight, was the author Jane Austen's niece and the wife of Sir Edward Knatchbull MP, serving in the Sir Robert Peel Ministry from 1841-1845.

Provenance: Collection "Besançon", Corinthila sale 231, Zurich, 30 Nov 2018, lot 6052.

6a

3'000



4095



4096

Gibbons

Start price
in CHF

- 4095** 4 d. blue on white paper, a pair (Pos. XIV 6 B/A) with large margins all round and showing small portion of adjoining stamp, used on 1858 double rate cover to Cape Town tied by CGH obliterator in black, with reverse showing oval framed Uitenhage despatch datestamp (April 9) struck in red. File fold well away from the fine adhesive, an attractive cover.

Note: The right 4 d. adhesive (Position XIV 6 B) shows guidelines more extensive than indicated by Commander F.W. Collins in his diagram.

Provenance: Collection Lord Vestey, lot 1097.

- 4096** 4 d. blue on white paper, a two single examples with left stamp (Pos. XIV 7 B) and right stamp (Pos. VII 1 B) with ample to large margins all round, used on 1862 double rate cover to Port Elizabeth tied by light CGH obliterator in black. Reverse with oval framed Cradock despatch datestamp in red (July 9) and fair only oval framed Port Elizabeth arrival. File folds away from the adhesives but scarce.

6a



160

6a



175



4097



4098

- 4097** 4 d. blue on white paper, two single used examples with left (Pos. XII 2 A) and right (Pos. XII 3 A) each with touched to good margins on 1864 cover endorsed "per Eastern Province" from Port Elizabeth to London, tied by CGH obliterator in black. Carried on the Maiden return voyage of the newly established Diamond Steam Navigation Company's line. The cover was carried at the private ship double rate of 8 d. with an equal split of the Postage between the UK and the Colony. Reverse with flap fault and GRAHAMSTOWN oval framed despatch datestamp in red (June 18) with 'London / Paid' arrival cds (Aug 1) on obverse.

6a



200

- 4098** 4 d. blue on white paper, a used pair (Pos. X 2 B/A), margins touched to close, on 28 September 1855 cover with complete contents from "Lichtenburg Convict Station" to Kilmuir, Argyllshire, endorsed "per Meteor" at lower, the stamps tied by CGH obliterator in black. Reverse with oval framed Cape Town datestamp (Oct 12) struck in red and Greenock cds (Dec 26) in green, charged "8d." in manuscript for an incoming ship letter. Interesting and prophetic content from the writer to his parents: "My employment is harassing enough, yet its healthy nature reconciles me to it. I have now been nearly three years knocking about roadmaking and I cannot say that I have been 3 minutes ailing during that time...I may likewise inform you on the present reason that there a likelihood of this Station being again moved farther up the country very shortly....Everything is quiet upon the frontiers, where our new Governor, Sir George Grey, is upon his travels, en route to Natal..." A rare usage.

Note: Lichtenburg Convict Station, in the Paarl Division, operated from 24 Feb 1854 to 25 March 1856, one Thomas Middlecot, clerk and storekeeper at Berg River Convict Station was transferred in February 1854 to Lichtenburg Convict Station to operate as its Postmaster. Some 720 Convict Camps are believed to have operated during the 1850's with just 23 known to have incorporated a postal facility. The writer of the letter was correct: Lichtenburg closed some six months after this letter.

6a



200



4099



Alfred H. Caspary

Gibbons

Start price
in CHF

- 4099** 4 d. blue on white paper, a used pair (Pos. II 7 A/B), large margins all round, on second sheet of 1857 double rate entire letter endorsed "Paid" to Port Elizabeth, tied by CGH obliterator in black. Reverse with oval framed "CAPE TOWN" despatch in red (May 5) and oval framed "PORT ELIZABETH" arrival (May 8), also in red. Central file fold well away from the fine adhesives, a choice and very fine cover.

Provenance: Collection Alfred H. Caspary, Harmers, New York, 24-26 Feb 1958, lot 272.

6a

**250**

4100

- 4100** 4 d. blue on white paper, a pair (Pos. IV 5 A/B) with good margins all round, used on 1858 double rate cover from Uitenhage to Cape Town tied by light strike of CGH obliterator in black. Reverse with oval framed UITENHAGE despatch datestamp (March 12) and oval framed CAPE TOWN arrival datestamp (March 16) both struck in red. File fold well away from the fine adhesives, a scarce and attractive cover.

Provenance: Collection "Bonaventure", Christie's, London, 9 Sept 1993, lot 151.

6a

**250**

C. Emerson Huston



4101



Sir Maxwell Joseph

- 4101** 4 d. blue on white paper, a used horizontal parallelogram pair (Pos. IX 6 A, IX 7 B) with large margins all round and first stamp imperceptibly touched, on 1859 cover from Cradock via Cape Town to Pietermaritzburg, Colony of Natal, tied by CGH obliterations in black. Reverse with oval framed CRADOCK despatch datestamp (Dec 17) in black, oval framed CAPE TOWN in red (Jan 2, 1860) and circular "Cape Town / Cape of Good Hope" cds (Jan 3) in red. Obverse with circular "NATAL" arrival (Feb 1). A fine and rare cover.

Note: Overland letters to Natal through the Orange Free State were charged at 8d. per ½ ounce prepaid. These letters were to be inscribed "By the Overland Route" or they were forwarded by the first sailing vessel.

*Provenance: Collection C. Emerson Huston, Harmers, London, 26-28 June 1961, ex lot 224
Collection Sir Maxwell Joseph, Sotheby's, London, 28-29 Oct 1982, lot 445
Collection Arno Spangenthal, Rapp, 25-27 Nov 1997, lot 1673.*

6a

**750**



Schooner 'Titania'



4102

Gibbons

Start price
in CHF

- 4102 Wreck Cover** 1855/63: 4 d. blue on white paper, a used pair (Pos. VI 6 A/B), margins clear to fine, used on 1856 Larkworthy correspondence cover from Kalk Bay to Melbourne, Victoria, Australia tied by CGH obliterations in black; the reverse with oval framed "KALK BAY" datestamp of despatch (March 12) in red, CAPE TOWN oval framed datestamp in red and CAPE TOWN / CAPE OF GOOD HOPE cds both of the same day. The cover travelled on the brig "*Prairie*" which arrived at the Cape on January 22, 1856, spending time in port and undergoing a change of Captains with James R. Caithness appointed as master for the onward leg of the voyage. The "*Prairie*" sailed on March 24th for Melbourne and she ran aground in a gale off Cape Otway, Victoria approaching Port Philip Bay and was dismasted and grounded on the Coast of Northern Tasmania on May 26th. She was later re-floated and repaired with the mail picked up by the "*Titania*" arriving at Melbourne on June 16, 1856 with reverse showing "SHIP LETTER / GPO MELBOURNE cds (June 19) in red. **Rare - the sole recorded Wreck Cover bearing Cape Triangular adhesives.**

Note: The Master, James Ramsey Caithness, was an unlucky or perhaps incompetent mariner with six of the ships he was associated with coming to grief in dramatic style. In 1844 it was the schooner "Mary" in Algoa Bay, in 1848 the brig "Lady Leith" on Thunderbolt Reef, in 1851 the "Diadem" at Plettenberg Bay; in 1854 the "Sea Gull" in Table Bay and in April 1855 the tragic "Flying Dragon" was consumed by fire. There was one more disaster in 1856, not in South African waters but off Melbourne, when he was in command of the brigantine "Prairie".

6a



1'500



Harvard University campus in Cambridge



4103

Gibbons

Start price
in CHF

4103 4 d. blue on white paper, a pair (Pos. X 3 B/A) with just shaved to good margins, used on 1857 double rate entire letter from Graaff Reinet to Cambridge, Massachusetts, USA neatly tied by CGH obliterator in black. Reverse with oval framed "GRAAFF REINET" despatch datestamp in red (July 29), oval framed CAPE TOWN and CAPE TOWN / CAPE OF GOOD HOPE cds in red (Aug 3). Carried on the bark "Chieftain" which left Cape Town on August 5th, arriving in London (Oct 15) with red cds on reverse and "ART - 2" Convention marking in black (Van der Linden surprisingly omitted) referring to GB-US Treaty of 15 Dec 1848. Thence via Liverpool and carried on Cunard Line steamer "Persia" to New York with circular "NEW YORK / BR. PKT." arrival (Oct 28) in black. A delightful entire of great rarity (the Dr. Guy Dillaway census records just 10 Transatlantic Cape Triangular covers) this being one of the finest and most attractive of the few known.

Note: Rates - Cape of Good Hope 8 d. paid for internal double rate cover under 1 ounce (the port fee charge of 4 d. was abolished on 1 August 1857, just two days earlier). Manuscript "1/4 d." would have been charged (double the 8 d. ship fee) had the letter been delivered to England, thus deleted. However the "2/6 d." manuscript charge is made up of the original 1 s. 4 d. + a further 1 s. for postage to USA + 2 d. for the cover being handled twice by the British P.O. = 2/6 d. This translates as 60 cents American (crossed through) plus double the inland charge of 5 cents = 70 cents to pay upon receipt.

6a



2'500



View of Grahamstown



4104

Gibbons

Start price
in CHF

4104 4 d. blue on white paper, a block of four (Pos. XI 1 B - 2 A) with large to enormous margins all round, used on 1858 registered quadruple rate entire letter to Port Elizabeth endorsed "Pd." and "Registered" at top, tied by CGH obliterations in black. Reverse with oval framed GRAHAMSTOWN despatch datestamp (Jan 23) and oval framed PORT ELIZABETH arrival datestamp (Jan 25) both struck in red. Scissor cut in margin only between the pairs and slight scuff on face panel but a wonderful and extremely rare usage - blocks of four on covers are great rarities of the issue.

Note: Payment of postage by the use of stamps had become compulsory on 1 January 1858. The letter above would have had the registration fee of 6 d. paid in cash as the 6 d. adhesive was not issued until February 1858. Alternatively this might have been a double rate cover (up to 1 ounce) overpaid by 2 d. but this is unlikely as the business letter mentions further enclosures.

Note: Pencil notation on reverse, "Collection of H.L.C., purchased in NYC, Nov 1911 for \$ 4.20".

6a

**2'000**

4105

4105 4 d. blue on white paper, a single used example (Pos. XIII 1 B), with good margins all round, variety "Watermark Sideways", lightly cancelled by CGH obliterator in black. Scarce Gi = £ 400.

6c

140



D. Alan Stevenson



4106

Gibbons

Start price
in CHF

- 4106** 1853 (Feb): Die Proof for the 6 d. value in stamp size pair, engraved in black and applied on thick cream card (58 x 58 mm.), showing upper stamp (Type A) with short dash outside the frameline above "PE" of PENCE and further small dots on two further sides (indicated by light pencil arrows by John H. Hall Jnr.). Illustrated in D. Alan Stevenson "Triangular Stamps of the Cape" on plate 21. A superb early deep impression of the Die and of enormous rarity, this being the finer of just two such examples (the other was in Dale-Lichtenstein, lot 15) in private hands: with the two other examples in the Mosely Collection in the British Library and in the collection of the Royal Philatelic Society - no example being present in the Royal collection of King Charles III.

Provenance: Collection D. Alan Stevenson, Harpers, London, 6 Nov 1950, lot 3.

7 Die Proof (*)

7'500

4107

- 4107** 1857c.: Earl of Crawford Colour Trial for the 6 d. value printed in brown on ungummed wove paper, a pair with large margins all round and showing the Crawford characteristics: Two dashes in margin above the first "E" of PENCE in Die B. Extremely fine and very rare.

*Provenance: Collection "Bonaventure", Christie's, London, 9 Sept 1993, lot 24.
Collection Lord Vestey.*

7 Colour
Trial (*)**500**



Mrs. Ad Indhusophon



4108



4109

Gibbons

Start price
in CHF

- 4108** 1862: 6 d. pale rose-lilac on white paper, a single example with large even margins all round, of fine delicate colour, hinge remnant on part og. A rare stamp Gi = £ 1'200.

Provenance: Collection Mrs. Ad Indhusophon, Spink, London 26 May 1999, lot 86

Collection William H. Gross, Spink Shreves, New York, 3 Oct 2008, lot 36.

7 * **350**

- 4109** 6 d. pale rose-lilac, an unused example with huge even margins all round, of delightful delicate colour, slightest oil spot in lower margin, a very rare stamp unused Gi = £ 1'200.

7 (*) **350**

4110



4111



Dr. Albert Louis

- 4110** 6 d. pale rose-lilac, a single example with large even margins all round, fine delicate colour, lightly cancelled by CGH obliterator in black. Scarce so fine Gi = £ 350.

Provenance: Collection "Besançon", Corinthila sale 231, Zurich, 30 Nov 2018, lot 6059.

7 **120**

- 4111** 6 d. pale rose-lilac, a single example with large even margins all round, fine delicate colour, cancelled by "Grahamstown Roller" cancellation in black. Scarce thus Gi = £ 350+.

Provenance: Collection Dr. Albert Louis, Corinthila sale 222, Zurich, 28 May-1 June 2018, lot 2031.

7 **150**

4112



Sir Maxwell Joseph

- 4112** 6 d. pale rose-lilac, a strip of three with good to very large margins all round, top stamp with ironed corner crease, but of fine appearance and in a delightful pastel shade, lightly cancelled by CGH obliterator in black. A charming multiple Gi = £ 1'050+.

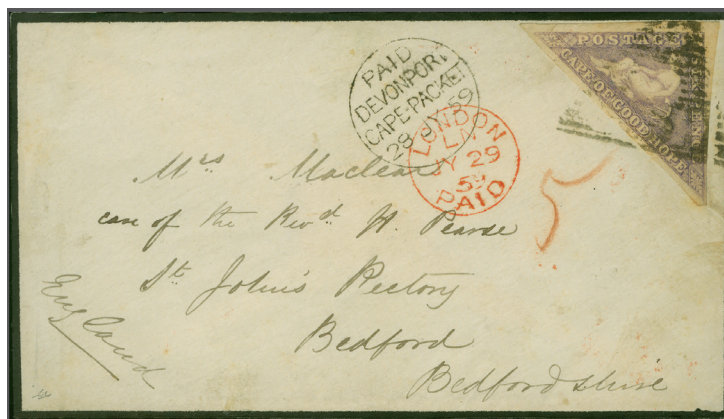
Provenance: Collection R. S. Wilkins

Collection Sir Maxwell Joseph, Sotheby's, London, 28-29 Oct 1982, lot 532

Collection "Table Mountain", Cavendish, Derby, 20 June 2001, lot 259

Collection "Besançon", Corinthila sale 231, Zurich, 30 Nov 2018, lot 6060.

7 **300**



4113



Dr. Albert Louis

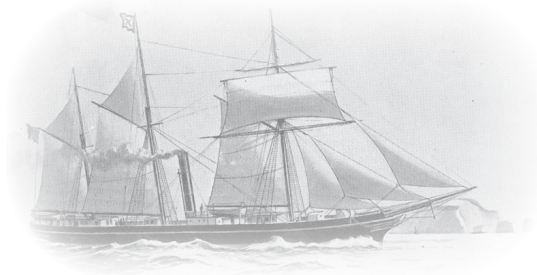
Gibbons

Start price
in CHF

- 4113** 6 d. pale rose-lilac, used example with clear to large margins all round, tied to 1859 mourning envelope to Bedford, UK (Maclear correspondence) at single rate, tied by CGH triangular handstamp in black. Carried on the "R.M.S. Athens" of the Union Steam Ship Co., which left Cape Town on 21 June. Obverse with "PAID / DEVONPORT / CAPE PACKET" datestamp (July 28) in black and London cds of the following day in red. Manuscript crayon "5" (pence) credit to UK in red manuscript. A fine and most attractive cover.

Provenance: Collection Dr. Albert Louis, Corinthila sale 222. Zurich, 28 May-1 June 2018, lot 2086.

7

350

R.M.S. Dane



4114



D. Alan Stevenson

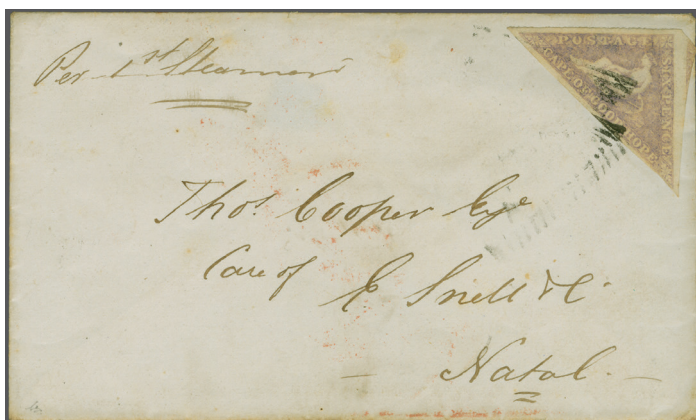
- 4114** 6 d. pale rose-lilac on white paper, a used example with large margins all round, used on 1862 cover to Dalston, London, tied by CGH obliterator in black. Reverse with oval framed GRAHAMSTOWN despatch datestamp in red (Sept 15) and "Cape Town / Cape of Good Hope" cds in red. Carried on the Union Steam Ship Co. "R.M.S. Dane" with manuscript "5d." credit to UK in red crayon and 'London / Paid' cds on obverse (Oct 30). A charming and scarce cover. Cert. BPA (1994).

Note: Delightful manuscript notation on flap reading "Last month's mail was left behind being washed away, mislaid or something like that. You will have the letter by this month's steamer I hope. Love Love Love Love".

Provenance: Collection Alan Stevenson, Harmers, London, 6-7 Nov 1950, lot 141
Collection "Medina", Spink, London, 20 March 2013, lot 122.

7

500



4115



View of Port Elizabeth

Gibbons

Start price
in CHF

- 4115** 6 d. pale rose-lilac on white paper, a used example with mostly large to just clear margins with portion of adjoining stamp at right, used on 1861 single rate cover to Natal endorsed "per 1st Steamer", tied by weak strike of CGH obliterator in black. Reverse with oval framed "PORT ELIZABETH" datestamp in red (June 21). Carried on the Rennie Steamer Service steamer "Albatross", leaving Cape Town 24 June and Algoa Bay (Port Elizabeth) on June 28. A somewhat surprisingly scarce destination for Cape mail of this period.

Note: The addressee, Thomas Cooper (1815-1913) was a botanist from Kew Gardens, London who arrived in Cape Town on "R.M.S. Dane" on 12 June 1859. At the time this letter was sent he was in Basutoland. He travelled extensively throughout Southern Africa sending many cases of shells, insects and reptiles, together with numerous plants, back to England.

Provenance: Collection Schofield, Harmers, London, 15 Jan 1951, lot 131

Collection "Besançon", Corinphila sale 231, Zurich, 30 Nov 2018, lot 6065.

7

600



4116



Dr. Albert Louis

- 4116** 6 d. pale rose-lilac, two single examples, one very fine the other imperceptibly shaved on one margin, used on 1860 double rate cover endorsed "per R.M.S. Norman" (Union Steam Ship Co. steamer) to Romsey, Hampshire, tied by CGH triangular handstamps in black. Reverse with 'Cape Town / Cape of Good Hope' despatch datestamp (Feb 21) in red. Obverse with "PAID / DEVONPORT / CAPE PACKET" datestamp (April 1) and London cds of the following day. Romsey arrival (April 2) in black on reverse with crayon "10" (pence) credit to UK in red also on obverse. From the 15 covers in this correspondence, just two were double rate frankings, a fine and very scarce cover.

Provenance: This correspondence of fifteen covers to Francis Taylor in Romsey first offered by Robson Lowe, Bournemouth, 7 July 1972, this being lot 709

Collection Dr. Albert Louis, Corinphila sale 222, Zurich, 28 May-1 June 2018, lot 2087.

7

400



Louise Boyd Dale



4117

Gibbons

Start price
in CHF

- 4117** 6 d. pale rose-lilac, a single example, minutely shaved at lower right otherwise with large margins all round, used on 1860 registered double rate cover with square pair of 6 d. blue with clear to large margins all round (Pos. XIII 2 B/A) and showing small portion of adjoining stamp at left beyond small marginal scissor cut; mailed to Cradock and all tied by CGH obliterator in black. Reverse with oval framed "BURGHERS-DORP" despatch datestamp (Feb 13) and oval framed "CRADOCK" arrival (Feb 14) in black. File folds well away from the adhesives, an exceptional and rare registered usage.

Provenance: Collection Louise Boyd Dale & Alfred F. Lichtenstein, Harmers, Washington DC, 25-26 Nov 1989, lot 270

Collection "Table Mountain", Cavendish, Derby, 20 June 2001, lot 373.

7+6a

**1'200**

4118



4119



4120

- 4118** 6 d. deep rose-lilac on white paper, a fine used example with good to very large margins, lightly cancelled by CGH obliterator in black $G_i = £ 400$.

7b

100

- 4119** 1862: 6 d. deep rose-lilac on white paper, a single example with very large margins all round, of fine fresh colour, crisply cancelled by CGH obliterator in black $G_i = £ 400$.

Provenance: Collection John Tolbutt, Harmers, London, 11 June 2002, lot 69.

7b

150

- 4120** 6 d. deep rose-lilac, a used example of fine fresh colour with good to huge margins all round, neatly cancelled by light CGH obliterator in black. A scarce stamp so fine $G_i = £ 400$.

Provenance: Collection Schofield, Harmers, London, 15 Jan 1951

Collection A. J. P. Baumann, Harmers, London, 22 Sept 1977, lot 90.

7b

180

C. Emerson Huston



Sir Maxwell Joseph



4121



R.A.G. Lee

- 4121** 6 d. deep rose-lilac, a used pair with good to large margins all round, cancelled by unclear barred oval numeral handstamp in black. A fine and most attractive pair $G_i = £ 800+$.

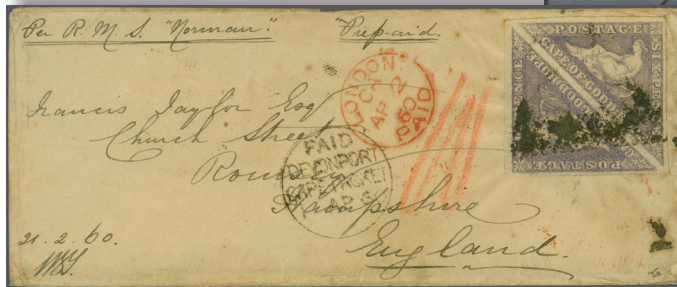
Provenance: Collection C. Emerson Huston, Harmers, London, 26-28 June 1961, lot 274

Collection Sir Maxwell Joseph, Sotheby's, London, 28-29 Oct 1982, lot 530

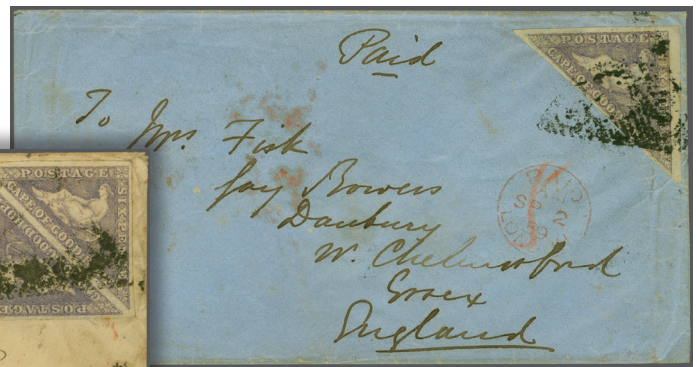
Collection "Maximus", Sotheby's, London, 7 Sept 1989, lot 296.

7b

250



4124



4122

Gibbons

Start price
in CHF

- 4122** 6 d. deep rose-lilac, a used example of fine fresh colour with large margins all round, on 1859 cover endorsed "Paid" to Chelmsford, Essex tied by CGH obliterator in black. Reverse with double arc cds of "D'URBAN" despatch cds (July 21 - a very early usage - nine months earlier than recorded by Frescura) and CAPE TOWN / CAPE OF GOOD HOPE cds in red of transit (July 21). Carried on the Union Steam Ship Co. "R.M.S. Dane" with 'Paid / London' cds (Sept 2) on obverse and "5d." in manuscript credit to UK. Some minor bends to the cover but most attractive.
Provenance: Collection Nygren.

7b

**350**

4123



Falconer Larkworthy (1833-1928)
banker and financier

- 4123** 6 d. deep rose-lilac, a single example with good even margins all round, used on 1860 Larkworthy correspondence cover from Colesberg to Melbourne, Victoria, Australia, tied by CGH obliterator in black. Reverse with oval framed "COLESBERG" despatch datestamp (Feb 18) in black, oval framed CAPE TOWN and "Cape Town / Cape of Good Hope" cds both in red (Feb 22). The cover was carried on the barque "Ellen Lewis" which departed Cape Town for New Zealand on 10 March 1860, with reverse also showing MELBOURNE cds in red (April 13) and "Beechworth / Victoria" oval datestamp in black (April 14). Flap with imprinted "Colesberg" in blue and notification of receipt underneath in manuscript. Just ten triangular covers are recorded to Australia. A fine and most attractive cover to an unusual destination. Cert. BPA (2010).
Note: The BPA certificate states 6d. pale rose-lilac, a small point with which this describer disagrees.

7b

**1'500**

- 4124** 6 d. deep rose-lilac, a used pair in a delightful shade with good to large margins all round, slight scissor cut away from design at base, used on 1860 double rate cover to Romsey, Hampshire tied by blurred CGH obliterator in black. Endorsed "Per R.M.S. Norman" and "Prepaid" at top in manuscript, with reverse showing CAPE TOWN / CAPE OF GOOD HOPE cds in red (Feb 20) and obverse with "PAID / DEVONPORT / CAPE PACKET" cds (April 1), 'London / Paid' cds in red (April 2) and Romsey arrival cds with "10" pence in red crayon for British credit. From the 15 covers in this correspondence, just two were double rate frankings. A fine and very scarce cover.
Provenance: This correspondence of fifteen covers to Francis Taylor in Romsey was first offered by Robson Lowe, Bournemouth, 7 July 1972, this being lot 708 Collection "Bonaventure", Christie's, London, 9 Sept 1993, lot 202 Collection Mrs. Ad Indhusophon, Spink, London, 26 May 1999, lot 94.

7b

**750**



Louise Boyd Dale



4125



Alfred F. Lichtenstein

Gibbons

Start price
in CHF

- 4125** 6 d. slate-lilac on blued paper, a single example with large even margins all round, of fine colour and distinct blueing on reverse, large part og. An extremely rare stamp in the foremost possible quality
Gi = £ 4'500.

Provenance: Collection Louise Boyd Dale & Alfred F. Lichtenstein, Harmers, Washington DC, 22-26 Nov 1989, lot 170.

7c

*

2'000

4126



4127



4128

- 4126** 6 d. slate-lilac on blued paper, a single example with large even margins all round, fine rich colour, cancelled by CGH obliterator in black. A scarce stamp. Signed A. Diena, Miro Gi = £ 500+.

Provenance: Collection "Besançon", Corinphila sale 231, Zurich, 30 Nov 2018, lot 6066.

7c

150

- 4127** 6 d. slate-lilac on blued paper, a single example with large margins all round, showing sheet marginal watermark lines along POSTAGE, of fine fresh colour, lightly cancelled in black Gi = £ 500.

Provenance: Collection Louise Boyd Dale & Alfred F. Lichtenstein, Harmers, Washington DC, 25-26 Nov 1989, lot 171.

7c

180

- 4128** 6 d. slate-lilac on blued paper, a single example with large margins all round, showing sheet marginal watermark lines along POSTAGE, of fine fresh colour, lightly cancelled by part barred oval numeral cancellation in black Gi = £ 500.

Provenance: Collection Louise Boyd Dale & Alfred F. Lichtenstein, Harmers, Washington DC, 25-26 Nov 1989, lot 182.

7c

180

4129

- 4129** 6 d. slate-lilac on blued paper, a used pair with large margins all round, of deep fresh colour, cancelled by barred oval number cancellation in black. A scarce and attractive pair. Signed A. Diena Gi = £ 1'000+.

Provenance: Collection "Bonaventure"; Christie's, London, 9 Sept 1993, lot 176.

7c

250



View of Leiden



Alan Holyoake



4130

Gibbons

Start price
in CHF

4130 6 d. slate-lilac on blued paper, two single examples, formerly a pair with just shaved to generally large margins all round, used with 1864 1 s. green pair on 1864 double rate registered envelope to Leyden, Netherlands with embossed "from Swellendam" in maroon at top left and manuscript "British & Foreign Rate Paid + Registered", the adhesives tied by CGH obliterations in black and the 1 s. pair additionally by "REGISTRED" in red applied in London. Reverse with oval framed "SWELLENDAM" despatch datestamp in red (Sept 18) and carried on the Union Steam Ship Co. "R.M.S. Briton" with London registered arrival datestamp (Oct 24). Manuscript "2/5d." credit to UK at right in red crayon. The 6 d. values probably lifted and replaced but a superb and extremely rare combination cover, one of the highlights of both the Bertolaja and Holyoake collections.

Note: The single rate to the Netherlands in 1864 was 1/3 d. per 1/2 ounce + 6 d. registration.

*Provenance: Collection A. Bertolaja, Spink, London, 20 June 2012, lot 170
Collection Alan Holyoake, Spink, London, 6 Oct 2021, lot 197.*

7c+26

**3'000**



4131



D. Alan Stevenson

Gibbons

Start price
in CHF

- 4131** 1853 (Feb): Die Proof for the 1 s. value in stamp size pair, engraved in black and applied on thick cream card with large even margins all round, superbly engraved and of great clarity and deep impression, Type A over B, an extremely rare Die Proof, with just one other such known (ex the Dale-Liechtenstein collection, lot 17): with the two other examples in the Mosely Collection in the British Library and in the collection of the Royal Philatelic Society - no example being present in the Royal collection of King Charles III.

Provenance: Collection D. Alan Stevenson, Harmers, London, 6 Nov 1950, lot 5.

8 Die Proof

(*)

3'500

4132

- 4132** Perkins Bacon Plate Proof for the 1 s. value printed in black on ungummed wove paper without watermark, a pair with good to large margins all round and showing the upper stamp with single line and lower stamp with two lines through first "L" of SHILLING. Rare and very fine.

Provenance: Collection "Bonaventure", Christie's, London, 9 Sept 1993, lot 20.

8 Plate Proof

(*)

250

Louise Boyd Dale



4133



Alfred F. Lichtenstein

- 4133** 1857c.: Earle of Crawford Colour Trial for the 1 s. value printed in yellow-green on ungummed wove paper, a pair with large margins all round and showing the Crawford characteristics: Dot under the "C" of CAPE in Die A. Extremely fine and very rare.

Provenance: Collection Louise Boyd Dale & Alfred F. Lichtenstein, Harmers, Washington DC, 25-26 Nov 1989, lot 39C.

8 Colour
Trial

(*)

500



Louise Boyd Dale



4134



Alfred F. Lichtenstein

Gibbons

Start price
in CHF

- 4134** 1855/63: 1 s. bright yellow-green, an unused example of wondrous fresh colour, with ample margin at base and large at right and sheet marginal at left showing the marginal lines of watermark, fine large part og. A magnificent example of this rare stamp and possibly the finest single example recorded. Cert. BPA (1990) Gi = £ 3'750.
Provenance: Collection Louise Boyd Dale & Alfred F. Lichtenstein, Harmers, Washington DC, 25-26 Nov 1989, lot 200
Collection Lord Vestey
Collection "Besançon", Corinphila sale 238, Zurich, 12 June 2019, lot 4072.

8 * 1'500



4135



4136

- 4135** 1 s. bright yellow-green, a fine used example with good margins all round, extremely lightly cancelled in black, leaving Hope clear. Scarce thus. Cert. RPSL (1960) Gi = £ 325.
4136 1 s. bright yellow-green, a used example of rich colour with large even margins all round, cancelled by large part "CAPE TOWN / CAPE OF GOOD HOPE" unlined circular datestamp in red. Extremely rare usage and an exquisite stamp Gi = £ 325+.
Provenance: Collection Louise Boyd Dale & Alfred F. Lichtenstein, Harmers, Washington DC, 25-26 Nov 1989, lot 203
Collection "Franschhoek", Spink, London, 20 June 2012, lot 161.

8 100

8 400



R.A.G. Lee



4137



4138

- 4137** 1 s. bright yellow-green, a used pair of fine fresh colour, with good to large margins all round, extremely lightly cancelled in black. Superb Gi = £ 650+.
Provenance: Collection Charles Lathrop Pack, Harmer Rooke, New York, Sale 1, 6-8 Dec 1944, lot 349
Collection H.E. Levitt; collection Sir Maxwell Joseph, Sotheby's, London, 28-29 Oct 1982, lot 576
Collection "Maximus", Sotheby's, London, 7 Sept 1989, lot 320.
4138 1 s. bright yellow-green, a used block of four of fresh colour, with ample to mostly large margins all round with small portion of adjoining stamp at top, neatly cancelled by CGH obliterations in black. A scarce multiple. Signed A. Bolaffi, Pfenninger Gi = £ 1'300+.
Provenance: Collection "Soloman", Köhler, Wiesbaden, 2-5 June 1982, lot 164
Collection Mrs. Ad Indhusophon, Spink, London, 26 May 1999, lot 102.

8 250

8 400



4139

Gibbons

Start price
in CHF

4139

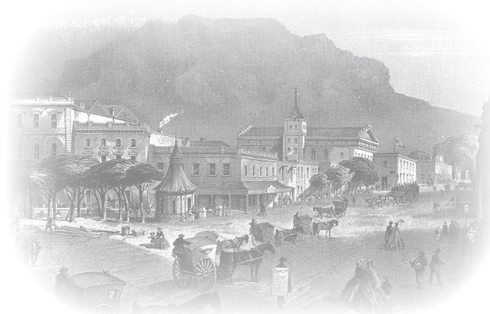
1 s. bright yellow-green, a used example of vibrant colour with ample to large margins, used on 1859 registered cover to Cape Town, tied by CGH obliterator in black. Reverse with oval framed "CALEDON" despatch datestamp (Nov 9) in black and obverse with oval framed CAPE TOWN arrival (Nov 10) in red. A rare usage - the cover is overpaid 2 d. for the single ½ ounce rate plus registration; most likely caused either by haste or the stamp shortage that led to the "Woodblock" temporary issues. A rare and most attractive cover. Cert. Philatelic Foundation (1968).

Note: Shipment of Stamps from London. Prior to this letter being mailed the last shipment of 1 d. and 4 d. adhesives were received in Cape Town on 14 April 1858 delivered by the R.M.S. Celt. 500'000 of each denomination were sent. The next shipment of 1'200'200 of the 1 d. and 1'440'000 of the 4 d. was dispatched on the "R.M.S. Norman" which arrived in Cape Town on 15 June 1860 but was misplaced in the Queen's warehouse at Cape Town Docks. The next shipment, also delivered on the "Norman" was accepted at Cape Town on 14 May 1861.

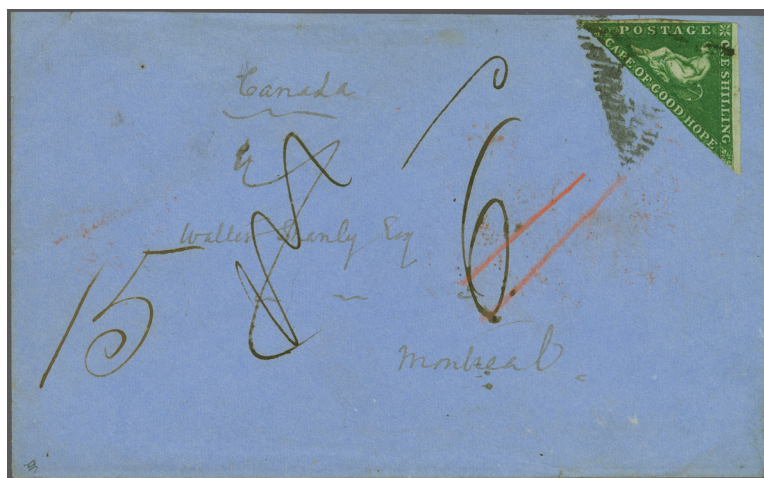
8



750



View of Cape Town



4140

4140

1 s. bright yellow-green on white paper, a used example with good to large margins and just shaved at base, on 1864 cover from British Kaffaria to Montreal, Canada tied by CGH obliterator in black. Reverse with flap missing but complete strike of oval framed "KING WILLIAMS TOWN" despatch datestamp (June 13) in red and thence by Mail Cart with "Cape Town / Cape of Good Hope" cds in red (June 20). Carried on "R.M.S. Saxon" of the Union Steam Ship Co. with 'London' cds in red (July 22) and from Liverpool on steamer "St. David" of the Montreal Ocean Steam Co. (Allan Line) on the same day to Quebec (Aug 4) and to Montreal with (Aug 7) arrival cds in black. Slight evidence of cleaning but a rare and most unusual destination cover.

Note: rates: 1 s. prepaid from Cape to Great Britain; 11 d. in red crayon being the British share of the postage. Noted with "6 d." in ink manuscript being the amount unpaid, "1 d." in black manuscript = credit due for Canada, deleted "7 d." in ink was replaced by the British 6 d. and the "15" cents in manuscript denoted the unpaid postage + penalty due from the recipient.

Note: Illustrated in "Prize Selections from Rocpex, Taipei 1981" exhibition catalogue on page 349.

*Provenance: Collection Vincent C. Greene
Collection Dr. Guy Dillaway.*

8



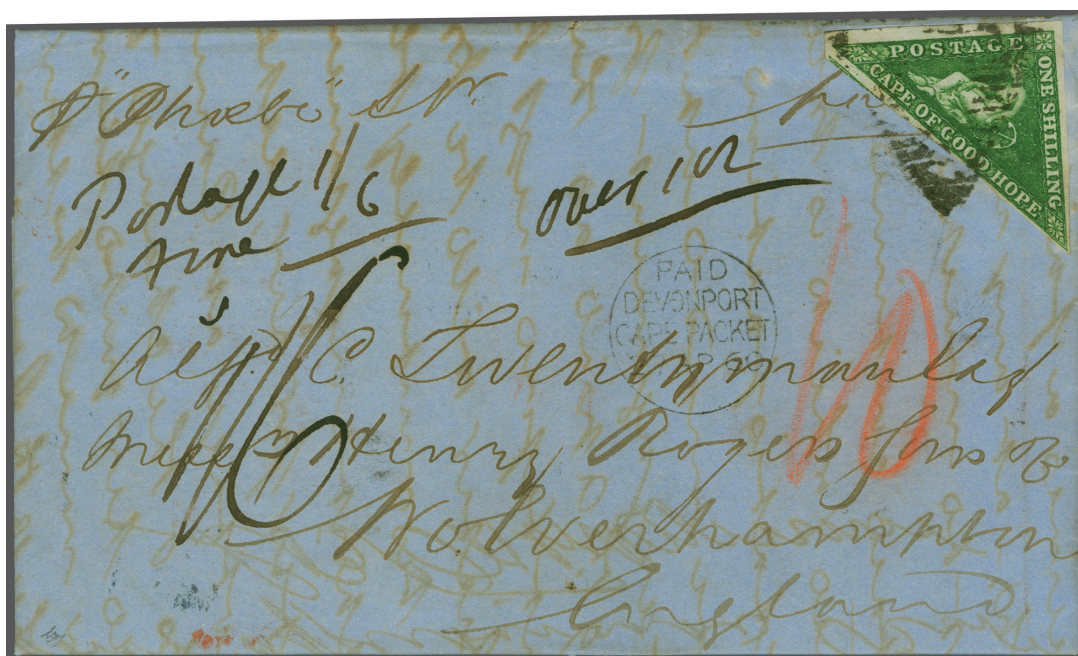
1'200



View of Montreal



R.M.S. 'Phoebe'



4141

Gibbons

Start price
in CHF

- 4141** 1 s. bright yellow-green, a single example of fresh colour with good to large margins all round and showing portion of adjoining stamp at base, on 1860 entire letter to Wolverhampton endorsed "p. Phoebe Str.", cancelled by CGH obliterations in black. Reverse with "Cape Town / Cape of Good Hope" despatch cds in red (March 23) and carried on the Union Steam Ship Co's "Phoebe" with "PAID / DEVONPORT / CAPE PACKET" cds in black on obverse (April 27). Annotated with "10d." British credit in red crayon and the letter weighed and found to be over 1 ounce and manuscript "Over 1 oz." on obverse with "Postage 1/-, Fine 6 d." at left with total charge "1/6d." below. A magnificent and important entire.

Note: This is the earliest "penalized" cover recorded, the practice of charging the deficiency plus 6 d. fine was only instituted on 1 March 1860. Prior to this date, from 1 June 1857, only the deficiency was charged.

Provenance: Collection Dr. Harry Gottschalk

Collection "Bonaventure", Christie's, London, 9 Sept 1993, lot 223

Collection "Table Mountain", Cavendish, Derby, 20 June 2001, lot 307.

8



1'500



View of Bloemfontein



R.A.G. Lee



4142

Gibbons

Start price
in CHF

4142

1 s. bright yellow-green on white paper, a used example with good to large margins all round and small portion of adjoining stamp at base, used on 1863 cover to Liverpool endorsed "Bloemfontein, 9 June 1863" at left and "Per Cape Mail Paid" at top, tied by CGH obliterator in black. Carried on the Union Steam Ship Co. steamer "R.M.S. Roman" with obverse showing manuscript "6" in red denoting the pre-payment from the Orange Free State and 'London / Paid' transit cds (July 22). Manuscript "11" pence British credit in red crayon at right. Reverse with CAPE TOWN / CAPE OF GOOD HOPE circular datestamp of transit in red (June 18) and Liverpool cds in black (July 22). A very rare and attractive cover, especially so from the Orange Free State.

Provenance: Collection 'Maximus', Sothebys, London, 7 Sept 1989, lot 326

Collection 'Franschoek', Spink, London, 20 June 2012, lot 184

Collection "Besançon", Corinthila sale 231, Zurich, 30 Nov 2018, lot 6071.

8



2'500



Panorama of Cape Town



Mrs. Ad Indhusophon



4143

Gibbons

Start price
in CHF

4143 1 s. bright yellow-green, a used pair of lovely delicate fresh colour, with huge margins all round, on 1859 entire letter at quadruple rate from Cape Town to Wolverhampton endorsed "p. Phoebe Str: 22 Oct 1859" lightly cancelled by CGH obliterations in black. Reverse with "Cape Town / Cape of Good Hope" cds in red (Oct 22) with 'London / Paid' cds on obverse (Nov 26) and Wolverhampton arrival cds in black of the same day on reverse. Carried on the Union Steam Ship Co.'s "Phoebe", the 2 shilling franking pays the under 2 ounce rate, with the adhesives additionally tied by "1/8d." British credit in red crayon. A fine and rare entire in the foremost quality.

Provenance: Collection "Soloman", Köhler; Wiesbaden, 2-5 June 1982, lot 165; Harmers, London, 8 Nov 1983, lot 575

Collection Mrs. Ad Indhusophon, Spink, London, 26 May 1999, lot 106

Collection "Besançon", Corinthila sale 231, Zurich, 30 Nov 2018, lot 6072.

8

**3'500**



4144

Gibbons

Start price
in CHF

- 4144** 1 s. yellow-green on white paper, a used example with good even margins all round in combination with 6 d. deep blue (Pos. III 1 B), equally fine, on 1860 quadruple rate cover from Beaufort to Cape Town tied by crisp strike of CGH obliterator in black. Reverse with oval framed "BEAUFORT" despatch datestamp in black (June 16) and oval CAPE TOWN arrival in red (June 20). Tiny tear at top of front panel and minor acid ink in address but a charming and rare franking that opens well for Exhibit display. Cert. BPA (2018).

Provenance: Collection "Besançon", Corinthila sale 238, Zurich, 12 June 2019, lot 4076.

8+6

**1'000**

4145



4146

- 4145** 1 s. deep dark green on white paper, an unused example of fine colour, large even margins all round, large part og. Scarce Gi = £ 500.

8b

*

160

- 4146** 1 s. deep dark green on white paper, an unused example of fine colour, large even margins all round, large part og. Scarce Gi = £ 500.

8b

*

160

4147



4148



4149

- 4147** 1 s. deep dark green, an unused pair with good to large margins all round, of delightful fresh colour, superb large part og. Gi = £ 1'000+.

8b

*

300

- 4148** 1 s. deep dark green on white paper, an unused pair with large even margins all round, of fine fresh colour, superb large part og. Rare and fine pair Gi = £ 1'000+.

8b

*

320

- 4149** 1 s. deep dark green on white paper, an unused pair with large even margins all round, of fine fresh colour, superb large part og. Rare and fine pair Gi = £ 1'000+.

8b

*

350



4152



4150



4153

Gibbons

Start price
in CHF

- 4150** 1 s. deep dark green on white paper, an unused block of four from the corner of the sheet showing the marginal lined watermark, large even margins on the other two sides, of wonderful fresh colour, minor wrinkle on superb large part og. Rare and superbly attractive multiple Gi = £ 2'000+.
Provenance: Collection John H. Hall Jnr., who stated that the block was purchased from Stanley Gibbons in 1924 and thus most probably came from the Stanley Gibbons' purchase of the J.C. Smuts collection in 1920.

8b

田*

750

Louise Boyd Dale



4151



Alfred F. Lichtenstein

- 4151** 1 s. deep dark green on white paper, an unused block of eight marginal from the side of the sheet showing the marginal lined watermark, large even margins on the other three sides, of wonderful fresh colour, large part og. A rare and most attractive multiple. Cert. BPA (1990) Gi = £ 4'000+.
Provenance: Collection Louise Boyd Dale & Alfred F. Lichtenstein, Harmers, Washington DC, 25-26 Nov 1989, lot 213.
- 4152** 1 s. deep dark green on white paper, a used example with large margins all round, clearly showing "Re-entry in "ON" of ONE" and doubling of the design through the POSTAGE tablet, lightly cancelled in black leaving the re-entries clear. Rare Gi = £ 500+.
- 4153** 1 s. deep dark green on white paper, a used pair in a rich shade with large margins all round, neatly cancelled by fine strike of CGH obliterator in black. A superb choice multiple and rare. Cert. RPSL (1974) Gi = £ 1'200+.

8b

田*

1'500

8b

200

8b

400

1861 (Feb.-April), printed by Saul Solomon, Local Provisional Issue "Woodblock" 1d. red

Woodblock Issue. Due to a stamp shortage caused by a consignment of stamps from London lost at Cape Town Docks, the so-called "Woodblocks", copied from the original Perkins Bacon issue were engraved on steel by C.J. Roberts and printed from stereotyped plates by Saul Solomon & Co., in Cape Town on laid thin white paper. The 1d. value was produced in sheets of 128 or 120 consisting of two panes of 64 or 60 stamps (smaller panes for the April printing), a total of 125'012 were printed. The 4d. value was initially printed in sheets of 24 between the 23 and 26 February, in sheets of 128 during between 9 and 14 March and in sheets of 120 on 12 April. The plate positions noted are taken from the existing arrangement of clichés, formerly exhibited at the South African Cultural History Museum in Cape Town.



4154



4155



4156

Gibbons

Start price
in CHF

- 4154** 1 d. vermillion on laid paper, a used example (Row 2, Stamp 1 showing lower left corner void at base and abrasion below "OS" of POSTAGE) with close to good margins, crease and minor thin spots, lightly cancelled by CGH obliterator in black Gi = £ 3'250.

Provenance: Collection Geoffrey Whitehead.

13

750

- 4155** 1 d. vermillion on laid paper, a very fine used example (Row 4, Stamp 2 showing lower left corner of design missing) with good to large margins, two slight ironed creases not affecting appearance, cancelled in black leaving the lower left corner clear. A rare stamp Gi = £ 3'250.

13

750

- 4156** 1 d. vermillion on laid paper, a very fine used example (Row 4, Stamp 3 showing plate flaw under "CA" of CAPE and uneven hypotenuse margin) with large even margins all round, cancelled by wide bars obliterator in black. A fine and rare stamp. Cert. BPA (1982) Gi = £ 3'250.

Provenance: Collection H.E. Levitt

Collection Sir Maxwell Joseph, Sotheby's, London, 28-29 Oct 1982, lot 669.

13

1'000

4157



4158



4159

- 4157** 1 d. vermillion on laid paper, a very fine used example with good to large margins and showing portion of adjoining stamp at base, lightly cancelled by crisp strike of CGH obliterator in black. A superb example of this rare stamp. Cert. RPSL (1994) Gi = £ 3'250.

Provenance: Collection D. Alan Stevenson, Harpers, London, 6-7 Nov 1950, lot 180.

13

1'200

- 4158** 1 d. vermillion on laid paper, a very fine used example with ample to large margins all round, of lovely fresh colour, lightly cancelled by part CGH triangular obliterator in black. Illustrated in Alan Stevenson "The Triangular Stamps of the Cape of Good Hope" in colour on plate 16. A superb and exquisite example of this rare stamp. Signed Joe Saatchi Gi = £ 3'250.

Provenance: Collection D. Alan Stevenson, Harpers, London, 6-7 Nov 1950, lot 181

Collection "Salisbury", Christie's, London, 20 Dec 1995, lot 1026.

13

1'500

- 4159** 1 d. vermillion on laid paper, a very fine used example (Row 1, Stamp 6 showing lower right corner of design missing) with large to huge margins all round and showing portion of adjoining stamp at right, of lovely fresh colour, crisply cancelled by part CGH triangular obliterator in black. A rare and splendid example of this rare stamp Gi = £ 3'250.

Provenance: Collection Charles Lathrop Pack, Harmer Rooke, New York, 6-8 Dec 1944, lot 362

Collection John H. Hall Jnr.

13

1'500



Consul Alfred Weinberger



Mrs. Ad Indhusophon



4160



Saul Solomon

Gibbons

Start price
in CHF

- 4160** 1 d. vermillion on laid paper, hint of carmine shade, a very fine used pair (Row 4, Stamps 1-2, stamp 2 showing lower left corner of design missing) with good to large margins, beautifully cancelled by complete strike of the CGH obliterator in black. A magnificent and extremely rare multiple of this iconic stamp, indisputably one of the finest known pairs Gi = £ 6'500+.

Note: Shade classified by the late John Michael.

Provenance: Collection Consul Alfred Weinberger, Harmers, London, 10 Dec 1974, lot 327

Collection "Salisbury", Christie's, London, 20 Sept 1995, lot 1028

Collection Mrs. Ad Indhusophon, Spink, London, 26 May 1999, lot 131

Collection "Cape Town", Spink, London, 7 July 2005, lot 17.

13

4'000

4161



4162

- 4161** 1 d. carmine on laid paper, a very fine used example with good to large margins in a resonant shade, cancelled by CGH obliterator in black leaving much of Hope clear, tiny thin spot or natural paper flaw in margin only at base, fresh and very fine. A rare stamp. Cert. Brandon (1995) Gi = £ 4'000.

Provenance: Collection Mrs. Evelyn Pavitt, 1955

Raymond Wilson, Harmers, London, 20 May 1968, lot 109

Collection "Salisbury", Christie's, London, 20 Sept 1995, lot 1036.

13a

1'000

- 4162** 1 d. carmine on laid paper, a very fine used example in a deep rich shade (Row 2, Stamp 9 showing right corner rounded and stamp below with small dents under right corner frame) with large to huge margins and large portion of adjoining stamp at base, tiny natural paper indentation of no significance, cancelled by in black. An exceptional example of a very rare stamp. Signed Brun, A. Diena. Certs. BPA (1951), Brandon (2003) Gi = £ 4'000.

13a

1'500



D. Alan Stevenson



Col. W. D'Arcy Hall



Sir Maxwell Joseph



R.A.G. Lee



Mrs. Ad Indhusophon



4163

Gibbons

Start price
in CHF

4163 1 d. carmine on laid paper, the famous block of four, very fine used on piece (Row 2, Stamps 13-14-15-16) with margins nearly all round: one stamp just touched at corner, large to enormous margins on three sides, slight ironed crease on the left hand pair and in the margin between the pairs, neither affecting the appearance, cancelled by light strikes of the CGH obliterator in black. Illustrated in "The Triangular Stamps of the Cape of Good Hope" by D. Alan Stevenson on plate 16 and in the London 1970 'Philympia' Exhibition catalogue. A rare and extraordinary multiple, just two blocks are recorded, these being the largest recorded multiples Gi = £ 16'000++.

Note: Certified as genuine by RPSL in 1948 # 32,217, the certificate is not present with the lot.

Provenance: Collection D. Alan Stevenson, Harmers, London, 6-7 Nov 1950, lot 188

Collection Col. W. D'Arcy Hall, Harmers, London, 5 Nov 1962, lot 133

Collection H.E. Levitt

Collection Sir Maxwell Joseph, Sotheby's, London, 28-29 Oct 1982, lot 715

Collection "Maximus", Sotheby's, London, 7 Sept 1989, lot 369

Collection "Bonaventure", Christie's, London, 9 Sept 1993, lot 265

Collection Mrs. Ad Indhusophon, Spink, London, 26 May 1999, lot 150.

13a

△田

12'500

4164

4164 1 d. brick-red on laid paper, a used example with good to large margins, slightest repair in margin under "E" of CAPE not affecting the appearance, cancelled by somewhat heavy strike of the CGH obliterator in black; nevertheless a presentable example of a very rare stamp. Cert. BPA (1948)

Gi = £ 5'000.

13b

500

1861, "Woodblock" Error of Colour 1d. blue



D. Alan Stevenson



Col. W. D'Arcy Hall



Sir Maxwell Joseph



Mrs. Ad Indhusophon



4165

Gibbons

Start price
in CHF

4165 1861 (Feb): **Error of Colour 1 d. printed in pale milky-blue instead of vermillion**, a wonderful used example with huge margins on two sides and imperceptibly shaved at left at base and showing portion of adjoining stamp below, lightly tied to small piece by triangular CGH obliterator in black leaving the the error "ONE PENNY" panel clear. An exceptional example of this major rarity Gi = £ 30'000.

Note: Just 1'094 stamps were prouced of the 4 d. error of colour and 1'568 of the 4 d. in vermillion. The 1 d. in pale milky-blue has survived in larger numbers due to their use on letters (as a 4 d. value) whilst the 4 d. in vermillion would have been used (as a 1 d. value) on Newspapers which were often thrown away.

Note: Formerly had RPSL certificate (1936) #19,297 and BPA certificate (1982).

Provenance: Collection D. Alan Stevenson, Harmers, London, 6-7 Nov 1950, lot 230

Collection W. D'Arcy Hall, Harmers, London, 5 Nov 1962, lot 161

Collection Wilkins

Collection Sir Maxwell Joseph, Sotheby's, London, 28-29 Oct 1982, lot 739

Collection "Salisbury", Robson Lowe, 20 Sept 1995, lot 1042

Collection Mrs. Ad Indhusophon, Spink, 26 May 1999, lot 161.

13c

△

7'500

1861 (Feb.-April), printed by Saul Solomon, Local Provisional Issue "Woodblock" 4d. blue



4166

Gibbons

Start price
in CHF

- 4166** 4 d. pale milky blue on thin laid paper, Type Ia, a used example with good margins and enormous margin at right, of fine fresh colour, lightly cancelled by CGH obliterator in black. A fine example of a scarce stamp. Signed Holcombe. Cert. Holcombe (1986) Gi = £ 2'750.
Provenance: Collection David Melat.

14

500

4167

*Sir Maxwell Joseph*

- 4167** 4 d. pale milky blue on laid paper, Type II, a used example (Row 4, Stamp 4 with bulge between "OF" and "GOOD" and dot after "A" of CAPE and rounded apex), with good to large margins all round and showing trace of adjoining stamp at base, lightly cancelled by CGH obliterator leaving Hope largely clear. Cert. BPA (1982) Gi = £ 2'750.
Provenance: Collection Wilkins

Collection Sir Maxwell Joseph, Sotheby's, London, 28-29 Oct 1982, lot 758.

14

500

4168

- 4168** 4 d. pale milky blue on laid paper, Type Ia, a used example (Row 2, Stamp 10 with rounded tip to apex and indent at left corner at base), with large margins all round and showing portion of adjoining stamp at base, some ironed creasing, lightly cancelled by CGH obliterator leaving Hope largely clear. Cert. BPA (2018) Gi = £ 2'750.

Provenance: Collection "Besançon", Corinphila sale 238, Zurich, 12 June 2019, lot 4095.

14

500

4169

*Consul Alfred Weinberger*

- 4169** 4 d. pale grey-blue on laid paper, Type Ia, a used example with large even margins all round, fine colour, cancelled by part CGH obliterator in black. Scarce and fine. Cert. BPA (1975) Gi = £ 3'000.
Provenance: Collection Consul Alfred Weinberger, Harmers, London, 10 Dec 1974, lot 330.

14

600



4170



John H. Hall

Gibbons

Start price
in CHF

- 4170** 4 d. pale grey-blue on laid paper, Type Ia, a used example with large margins all round, crisply cancelled by CGH obliterator in black. A very fine and attractive example of a scarce stamp.
Provenance: Collection John H. Hall Jnr.

14

750



Louise Boyd Dale



4171



Alfred F. Lichtenstein

- 4171** 4 d. pale grey-blue on laid paper, Type Ia, a used example with large even margins all round, fine intense impression with Hope appearing only as an outline, lightly cancelled by both CGH obliterator in black and by part red cds at lower right. Minor wrinkle but a most impressive and unusual example of this scarce stamp *Gi = £ 2'750.*

Provenance: Collection Louise Boyd Dale & Alfred F. Lichtenstein, Harmers, Washington DC, 25-26 Nov 1989, lot 373.

14

750



C. Emerson Huston



Sir Maxwell Joseph



4172



Mrs. Ad Indhusophon

- 4172** 4 d. pale milky blue on laid paper, Type Ia, a used example in a very pale shade, close at left but otherwise with huge margins, lightly cancelled by CGH obliterator in black. An exceptional example of this stamp. Signed Brun, Herbert Bloch. Cert. BPA (1982) *Gi = £ 2'750.*

Provenance: Collection C. Emerson Huston, Harmers, London, 26-28 June 1961, lot 334 ("a glorious copy")

Collection Sir Maxwell Joseph, Sotheby's, London, 28-29 Oct 1982, lot 747

Collection "Salisbury"; Robson Lowe, London, 20 Sept 1995 lot 1047

Collection Mrs. Ad Indhusophon, Spink, 26 May 1999, lot 167.

14

850



4173

Gibbons

Start price
in CHF

- 4173** 4 d. pale grey-blue on laid paper, Type II / Ia, a used pair with fine to generally huge margins all round, Row 3, Stamp 7- 8, tied to small piece by part CGH obliterator in black; the huge margin at right with minute bend prior to affixing otherwise a pair of wonderful quality and appearance. Exceptional and of great rarity $G_i = \pounds 5'500+$.

Provenance: Collection "Salisbury", Robson Lowe, London, 20 Sept 1995, lot 1061

Collection William H. Gross, Spink Shreves, New York, 3 Oct 2008, lot 49.

14

**4'000**

D. Alan Stevenson



4174



Sir Maxwell Joseph

- 4174** 4 d. pale grey-blue on laid paper, Type Ia, a used example with good to very large margins all round, in a rich shade, cancelled by CGH obliterator in black. Scarce and fine. Cert. BPA (1982) $G_i = \pounds 3'000$.

Provenance: Collection D. Alan Stevenson, Harmers, London, 6-7 Nov 1950, lot 212

Collection Sir Maxwell Joseph, Sotheby's, London, 28-29 Oct 1982, lot 787

Collection "Bonaventure", Christie's, London, 9 Sept 1993, lot 290.

14a

750

4175

- 4175** 4 d. pale grey blue on laid paper, Type Ia, a used example from the fourth printing with good to just touched margins, on 29 March 1861 entire letter to McMaster & Crump, Grahamstown, Eastern Province, tied by CGH obliterator in black. reverse with oval framed "PORT ELIZABETH" dispatch datestamp in red (March 29). File fold well away from the adhesive, a very rare stamp on letter.

Provenance: Collection "Table Mountain", Cavendish, Derby, 20 June 2001, lot 326.

14a

**1'500**



4176



4177



4178

Gibbons

Start price
in CHF

- 4176** 4 d. pale bright blue on laid paper, rare Type IB, a used example with shaved margin at left, large at right and showing portion of adjoining stamp at base, slight thinning and small faults, nevertheless a good example of an extremely rare stamp. Cert. Brandon (1982) $G_i = £ 3'250$.

Provenance: Collection A.J. Stevens, Harmers, London, 23 Nov 1959, lot 221

Collection Wilkins

Collection Sir Maxwell Joseph; Sotheby's, London, 28-29 Oct 1982, lot 824.

14b

350

- 4177** 4 d. pale bright blue on laid paper, Type II, a very fine used example with large even margins all round, lightly cancelled by CGH obliterator in black. A fine and scarce stamp. Cert. RPSL (1960) $G_i = £ 3'250$.

Provenance: Collection J.L. Van Dieten.

14b

500

- 4178** 4 d. pale bright blue on laid paper, Type II, a used example in a slightly deeper shade, with good to large margins all round, neatly cancelled by CGH obliterator in black. Signed Holcombe. Cert. Holcombe (1984) $G_i = £ 3'250$.

14b

750

4179



4180



4181

- 4179** 4 d. pale bright blue on laid paper, Type Ia, a very fine used example with large even margins all round, lightly cancelled by CGH obliterator in black. A very fine and scarce stamp. Signed Holcombe. Cert. Holcombe (1992) $G_i = £ 3'250$.

Provenance: Corinphila sale 84, Zurich, Oct 1992, lot 2124.

14b

750

- 4180** 4 d. pale bright blue on laid paper, Type II, a very fine used example (Row 1, Stamp 7, showing right corner of design missing), with good to enormous margins with portion of adjoining stamp at left - and sheet marginal at right, unapparent ironed bend, lightly cancelled by CGH obliterator in black. A superb example of this scarce stamp. Cert. Brandon (1998) $G_i = £ 3'250$.

Provenance: Collection Col. L. Praportichetovich, Plumridge, London, 29 June 1933, lot 29

Collection Schofield, Harmers, London, 15 Jan 1951

Collection C. Emerson Huston, Harmers, London, 26-28 June 1961, lot 343

Collection Sir Maxwell Joseph, Sotheby's, London, 28-29 Oct 1982, lot 827

Collection "Bonaventure", Christie's, London, 9 Sept 1993, lot 296.

14b

1'000

- 4181** 4 d. pale bright blue on laid paper, Type II, a used example in a slightly deeper shade, with clear to large margins on two sides, cancelled by Grahamstown roller cancellation in black. Trace of crease at left not detracting from the delightful appearance of a scarce stamp. Cert. BPA (1982) $G_i = £ 3'250$.

Provenance: Collection H.E. Levitt, collection Sir Maxwell Joseph, Sotheby's, London, 28-29 Oct 1982, lot 826

Collection "Salisbury", Christie's, London, 20 Sept 1995, lot 1068

Collection "Cape Town", Spink, London, 7 July 2005, lot 41.

14b

△

750

4182

- 4182** 4 d. pale milky blue on laid paper, rare Type IB, a used example with good even margin at left, shaved on the other two sides, variety "Retouch to Lower Right Corner", cancelled by crisp strike of CGH triangular obliterator well away from the Retouch. An extremely rare stamp. Cert. APS (1981) $G_i = £ 9'000$.

14ba

2'000



4183



Sir Maxwell Joseph

Gibbons

Start price
in CHF

4183 4 d. pale bright blue on laid paper, a used pair, **both the rare Type IB**, with good margins all round, cancelled by CGH obliterator in black. This pair constitutes a rarity of the Woodblock issue - a pair containing the scarce retouch to the right corner (Gi 14ba) is actually much more common than an example *without the retouch in pair with another Type IB*. Small corner imperfections not into the design, horizontal crease at top, otherwise fine and of great rarity. Cert. BPA (1982) Gi = £ 6'500++.

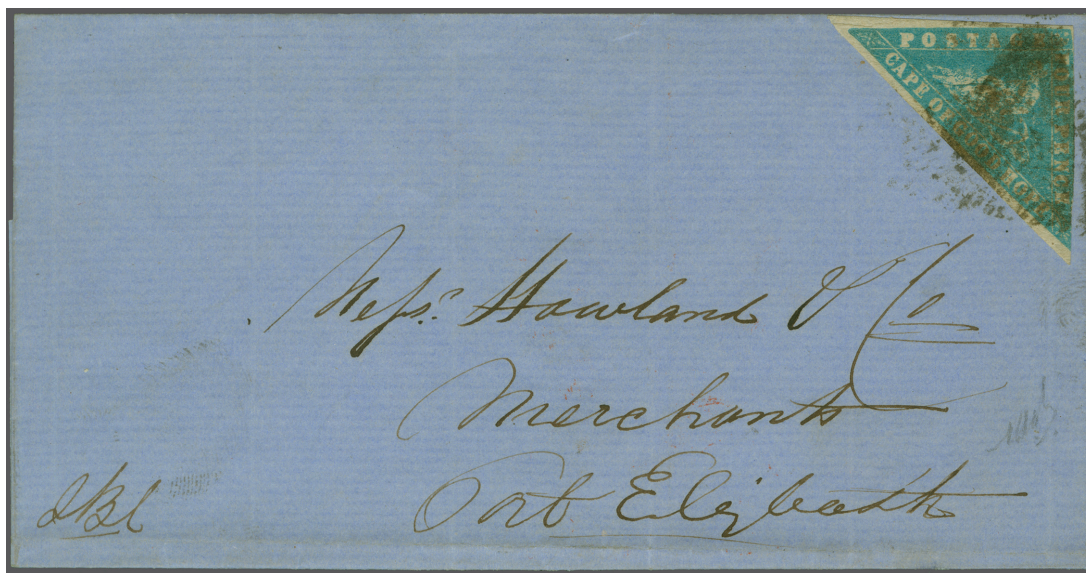
Provenance: Collection H.E. Levitt

Collection Sir Maxwell Joseph, Sotheby's, London, 28-29 Oct 1982, lot 835.

14b var

2'000

View of Port Elizabeth



4184

4184 4 d. pale grey blue on laid paper, Type Ia, a used example with two good to large margins and shaved at right, on 1861 cover to Messrs. Howland & Co. in Port Elizabeth, tied by somewhat blurred CGH obliterator in black. Reverse with oval framed "PORT ELIZABETH" datestamp of arrival (May 3) in red. A rare stamp on letter. Signed Herbert Bloch.

14b

**1'000**



Checking the quality of wool



4185

Gibbons

Start price
in CHF

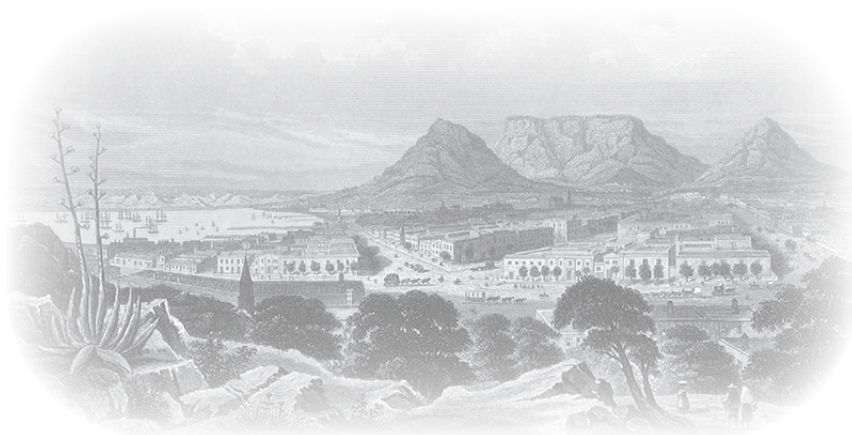
4185 4 d. pale milky blue on laid paper, rare Type Ia, of vibrant colour, imperceptibly shaved margin at top left, lower margin ample and right margin large, used on 19 March 1861 entire letter at single rate to McMaster & Crump in Grahamstown, tied by CGH obliterator in black. Reverse with oval framed "PORT ELIZABETH" despatch datestamp in red (March 19). A most attractive entire and extremely rare entire.

Note: The stamp on this cover could only come from the first three early printings of the 4 d. Woodblock, since stamps from the fourth and largest printing were produced on 14 March 1861 and could not have reached Port Elizabeth in time to have been used on this entire; 14 March was a Thursday and the first mail from Cape Town to Port Elizabeth was dispatch on Saturday, 16 March arriving late on Tuesday 19 March. The addressee's McMaster & Crump were involved in the woollen industry in Grahamstown in the 1860's and is the source of many of the known Woodblock covers today; its correspondence was first discovered in the 1890's.

14b



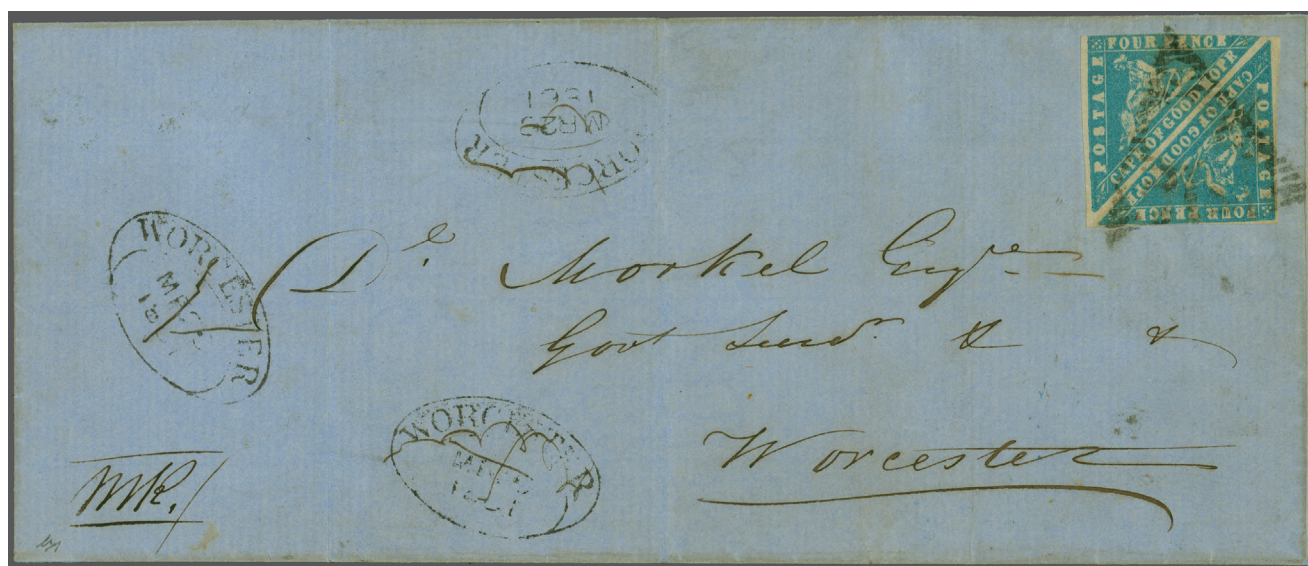
2'000



View of Cape Town



Charles Lathrop Pack



4186

Gibbons

Start price
in CHF

- 4186** 4 d. pale grey blue on laid paper, a pair, both Type Ia, with clear to large margins on three sides and just shaved at top (Row 1, Stamps 16 and 15, with 16 uppermost), used on 1861 double rate cover from Cape Town to "Dr. Morkel, Government Landrost" in Worcester, tied by CGH obliterator in black. Reverse with oval framed CAPE TOWN despatch datestamp in red (March 12) and thus the stamps from one of the first three printings made prior to the fourth on 14 March; the cover received and struck with oval framed arrival (March 13) in black together with four further strikes of the datestamp - all showing the erroneous date of 26 March and these deleted in manuscript ink. No example of an internal double rate Woodblock cover was present in the Smuts, Stevenson or R.A.G. Lee Grand Prix collections. A rare and most appealing cover. Signed Bühler. Certs. Georg Bühler (1979), Friedl (1980).

Note: There are only two pairs, both Types Ia (pairs 8 and 31), possible in the existing arrangement of the clichés.

*Provenance: Collection Charles Lathrop Pack, Harmer Rooke, New York, 10-13 April 1945, lot 566
Collection "Franschhoek", Spink, London, 20 June 2012, lot 251.*

14b



5'000



4187



4188



Mrs. Ad Indhusophon

Gibbons

Start price
in CHF

- 4187** 4 d. deep bright blue, a used example, Type Ia, with good to very large margin at base, Row 4, Stamp 14 showing base near lower left corner ornament uneven, cancelled by CGH obliterator in black. Very fine quality, a rare stamp. Signed Herbert Bloch $G_i = £ 5'500$.

Note: Formerly had BPA certificate (1993).

Provenance: Collection "Bonaventure", Christies, London, 9 Sept 1993, lot 310.

14c

1'200

- 4188** 4 d. deep bright blue, a used example, Type Ia, with good to huge margins, Row 4, Stamp 9 showing white full stop after "S" of POSTAGE, lightly cancelled in black. Trivial ironed corner crease not detracting from a very fine and attractive example of this rare stamp $G_i = £ 5'500$.

Note: Formerly had an RPSL certificate (1968).

Provenance: Collection Raymond Wilson, Harmers, London, 20-21 May 1968, lot 113

Collection "Maria de La Queillerie", Harmers, London, 18-19 May 1970, lot 271;

Collection "Salisbury", Christie's, London, 20 June 1995, lot 1075

Collection Mrs. Ad Indhusophon, Spink, London, 26 May 1999, lot 203.

14c

1'750

4189



Sir Maxwell Joseph

- 4189** 4 d. deep bright blue, a used example, Type II, with huge to enormous margins, Row 3, Stamp 15 showing white speck in background at extreme right of Hope's seat, lightly cancelled by CGH obliterator in black. Faint corner crease in margin only and inconspicuous vertical bend, cancelled by the Grahamstown roller handstamp in black. A most appealing example of this extremely rare stamp. Cert. BPA (1982) $G_i = £ 5'500$.

Provenance: Collection Sir Maxwell Joseph, Sotheby's, London, 28-29 Oct 1982, lot 868

Collection "Besançon", Corinphila sale 231, Zurich, 30 Nov 2018, lot 6097.

14c

2'000

D. Alan Stevenson



4190



Lars T. Amundsen



Sir Maxwell Joseph

- 4190** 4 d. deep bright blue, a used example, Type Ia, with large to very large margins and of rich vibrant colour, Row 2, Stamp 10 showing dent below lower left corner in margin, lightly cancelled by CGH obliterator in black leaving Hope largely clear. Illustrated in D. Alan Stevenson "Triangular Stamps of the Cape" on plate 16. A remarkably lovely example of this extremely rare stamp in outstanding quality $G_i = £ 5'500$.

Note: This stamp had a 1937 certificate from the RPSL which no longer accompanies the lot.

Provenance: Collection Michael Stephens, Harmers, London, 8 Jan 1937, lot 302

Collection D.A. Stevenson, Harmers, London, 6-7 Nov 1950, lot 222

Collection Lars Amundsen, SG, London, 6-8 Dec 1967, lot 156

Collection H.E. Levitt

Collection Sir Maxwell Joseph, Sotheby's, London, 28-29 Oct 1982, lot 856

Collection "Salisbury", Christie's, London, 20 Sept 1995

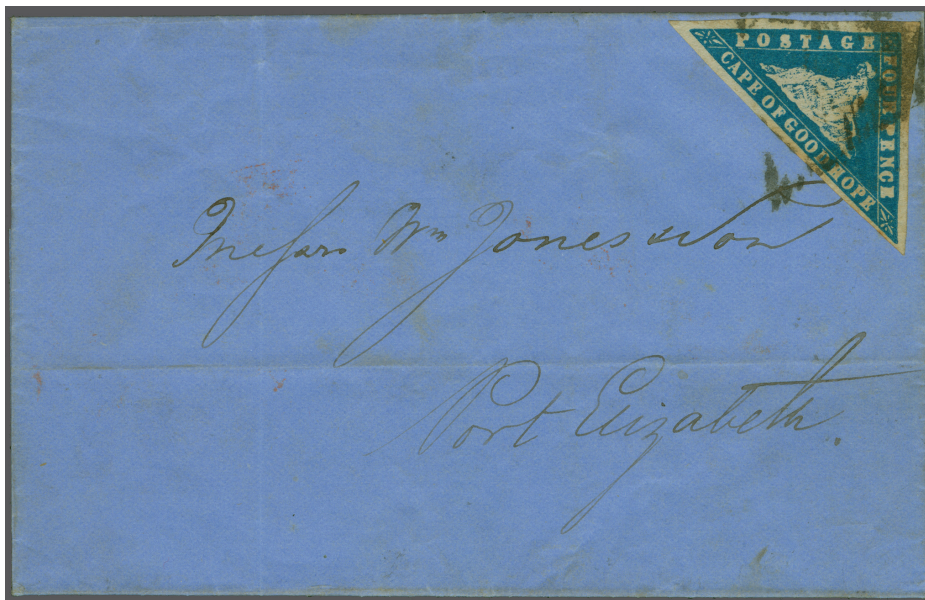
Collection William H. Gross, Spink Shreves, New York, 3 Oct 2008, lot 52.

14c

2'000



View of Port Elizabeth



4191

Gibbons

Start price
in CHF

- 4191** 4 d. deep bright blue, a used example, Type II, with good to very large margins all round, Row 1 Stamp 4 showing distinctive slope to frameline above "TA" and "GE" of POSTAGE, on 1861 single rate cover to Port Elizabeth tied by CGH obliterator in black. Reverse with oval framed "CAPE TOWN" despatch datestamp (Nov 2) and oval framed "PORT ELIZABETH" arrival (Nov 5) both struck in red. The stamp removed for checking and replaced, some minor cover creases not affecting the fine adhesive; an extremely rare stamp on letter. Cert. RPSL (1955).

Note: Approximately 20 covers are known bearing this stamp - the rarest shade of the 4 d. Woodblock, from the fifth and final printing.

14c

**2'500**

1861, "Woodblock" Error of Colour 4d. vermillion



4192

- 4192** **Error of Colour** 4 d. printed in vermillion instead of pale milky-blue, a used example with margins close or shaved all round the design, relatively lightly cancelled in black, the stamp creased and re-backed and slightly painted in at top left but the "FOUR PENCE" value tablet remaining clear. Despite imperfections a not unappealing example of an exceedingly scarce stamp. Cert. APS (1983)

Gi = £ 40'000.

Note: Illustrated in "Prize Selections from Rocpex, Taipei 1981" exhibition catalogue on page 348. Provenance: Collection Richard Green.


14c

1'500

"Woodblocks" Government & Official Reprints

Gibbons

Start price
in CHF

- 4193** 1883 (March): Government reprints with 1 d. deep red single examples (4) and two pairs (all are plated) and relatively rare with just 12'090 stamps printed thus; 4 d. in deep indigo-blue with single examples (7) and two pairs (again all are plated) and scarce with just 12'285 printed; together with 1941 official reprints with 1 d. and 4 d. reprints in black on buff paper (each signed A. Jurgens); three reprints of 1 d. (2) and 4 d. in deep shades of carmine and blue respectively on card signed A. Jurgens and dated 26 Nov 1940 - just 50 of these cards prepared, this being number 7; two further cards showing pairs of each value in black or in colour, again each signed A. Jurgens. A splendid and scarce group (20 items).
(Photo =  www)

Reprints
13/14

(*)

250

1863/64, printed by De La Rue from Perkins Bacon plates



4194

- 4194** 1 d. deep carmine-red, an unused example of fresh colour, large margins all round, fine large part og. Superb Gi = £ 375.
*Provenance: Collection H.E. Levitt
Collection Sir Maxwell Joseph, Sotheby's, London, 28-29 Oct 1982, lot 901.*

18

*

120

4195



4196

- 4195** 1 d. deep carmine-red, an unused pair with large margins all round in a fresh shade, slight horizontal crease not affecting the appearance, large part og. Gi = £ 750+.
- 4196** 1 d. deep carmine-red, an unused sheet marginal pair with large margins all round in a fresh shade, showing marginal lined watermark, minor gum wrinkling, large part og. An attractive multiple Gi = £ 750+.

18

*

180

18

*

200

4197



4198

- 4197** 1 d. deep carmine-red, an unused pair with good to large margins all round, fine rich colour, large part og. Scarce Gi = £ 750+.
- 4198** 1 d. deep carmine-red, an unused sheet marginal pair with large margins all round in a fresh shade, showing 'POST' marginal watermark (this appeared twice on sheet), large part og. A superb and most attractive multiple Gi = £ 750+.
Provenance: Collection Nygren.

18

*

200

18

*

250



4199

Gibbons

Start price
in CHF

- 4199** 1 d. deep carmine-red, an unused sheet marginal block of eight, with large margins all round and showing marginal lines of watermark, fresh vibrant colour, superb large part og. A scarce and delightful multiple $G_i = £ 2'600+$.

Provenance: Collection Mrs. Ad Indhusophon, Spink, London, 26 May 1999, lot 216.

18 田*

850

4200

- 4200** 1 d. deep carmine-red, an unused sheet marginal block of twelve, with large margins all round and showing marginal lines of watermark, fresh vibrant colour, superb large part og. A scarce and delightful multiple $G_i = £ 4'500+$.

Provenance: Collection Isleham, Christie's, New York, 11 March 1987, lot 2078.

18 田*

1'500

4201



4202



R.A.G. Lee

- 4201** 1 d. deep carmine-red, a used example of fresh rich colour, large margins all round and showing small portion of adjoining stamp at base, lightly cancelled by part CGH obliterator leaving Hope clear. Note that the inking has spread over the edge of the design above "ONE". Superb $G_i = £ 325$.

Provenance: Collection "Cawardine".

18

100

- 4202** 1 d. deep carmine-red, a used example of fine colour, large margins all round, cancelled by part barred oval numeral "2" of Port Elizabeth in black. A very fine stamp $G_i = £ 325$.

Provenance: Collection "Maximus", Sotheby's, London, 7 Sept 1989, lot 427.

18

100



4203



4204



4206



4207

Gibbons

Start price
in CHF

- 4203** 1 d. deep carmine-red, a used pair of fine colour, good to large margins all round, lightly cancelled by complete strike of the CGH obliterator in black. Attractive Gi = £ 650+.
Provenance: Collection Dan Franklin.

18

180

- 4204** 1 d. deep carmine-red, a used pair of rich colour, large margins all round and showing large portion of adjoining stamp at base, lightly cancelled by CGH obliterator in black. A choice and most attractive multiple Gi = £ 650+.
Provenance: Collection Louise Boyd Dale & Alfred F. Lichtenstein, Harmer, Washington DC, 25-26 Nov 1989, lot 412.

18

250

4205



Dr. Albert Louis

- 4205** 1 d. deep carmine-red, a used example with two good margins and touched at left, tied to local 1864 cover addressed to Miss Maclear, tied by oval barred '1' numeral obliterator with CAPE TOWN / CAPE COLONY datestamp (Sept 13) alongside. Miss Maclear was the daughter of Sir Thomas Maclear (1874-1879) who ran the Astronomical Royal Observatory at the Cape. The reverse of the envelope bears the embossed seal of the "2nd Battalion of the 10th North Lincolnshire Regiment, Egypt". A most attractive and rare cover carried at the newly introduced (February 1, 1864) expanded local rate of 1 d. serving the suburbs of Cape Town: Claremont, Diep River (Rathfelders), Green Point, Mowbray, Plumstead, Papendorp (Woodstock), Wynberg, Montagu Bridge (Maitland) and Robben Island.
Provenance: Collection Dr. Albert Louis, Corinthila sale 222, Zurich, 28 May-1 June 2018.

18

**750**

- 4206** 1 d. deep carmine-red, a used example of fine colour, large margins all round, variety "Watermark Sideways" (reversed), cancelled by part barred oval numeral "2" of Port Elizabeth in black. A very fine example of an elusive stamp Gi = £ 600.
Provenance: Collection John H. Hall Jnr.

18a

180

- 4207** 1 d. deep brownish-red, a used pair of light impression in a rich shade, margins good to very fine, cancelled by near complete triangular CGH obliterator in black. Scarce and fine Gi = £ 750+.
Provenance: Collection "Bonaventure", Christie's, London, 9 Sept 1993, lot 344.

18b

200



View of Sir Lowry's Pass



4208

Gibbons

Start price
in CHF

4208

1 d. deep brown-red, a block of four with clear to large margins all round, tiny age spot in margin, used on 1865 quadruple rate entire letter from Sir Lowry's Pass Station to Stellenbosch, cancelled by two fine strikes of the CGH obliterator in black. 'Cape Town / Cape Colony' circular datestamp at right (July 1) and reverse with oval framed "SIR LOWRY'S-PASS" despatch in black (June 31, sic) and "STELLENBOSCH" arrival in black. A fine and rare cover, the contents are a monthly report, referring to the hire of a fellow road-worker and stating that over 400 yards of road at the Pass had been recoated that month. A delightful and very rare entire.

Note: A 1 d. De La Rue block of four on cover was not present in the Smuts, Stevenson, Dale-Lichtenstein and Indhusophon Grand Prix collections.

Provenance: Collection "Maximus", Sotheby's, Sept 1989, lot 444

Collection "Lady Hope", DF, Nov 2003, lot 20344

Collection "Franschoek", Spink, 20 June 2012, lot 315

Collection "Besançon", Corinthila sale 238, Zurich, 12 June 2019, lot 4115.

18b



5'000



Louise Boyd Dale



4209



Alfred F. Lichtenstein

Gibbons

Start price
in CHF

- 4209** 1 d. deep brown-red, a pair and single 1855/63 4 d. blue (Pos. XII 8 B), each with close to large margins all round, used on 1864 cover from Cape Town to Newcastle, Natal paying the 6 d. rate, tied by barred oval numeral "1" cancels on Cape Town in black. "CAPE TOWN / CAPE COLONY" circular datestamp (Dec 17) at right. Carried on the "R.M.S. Anglian" which left Cape Town on 18 December arriving at Algoa Bay on 20 December and Durban on 24 December. Side flaps missing from the cover and with envelope restored at upper right, however it is interesting to note that this was the sole Triangular Perkins Bacon combination cover in the Dale-Lichtenstein collection. Cert. BPA (1998).
Provenance: Collection Bainbridge, Oct 1930
Collection Louise Boyd Dale & Alfred F. Lichtenstein, Harmers, Washington DC, 28-29 Nov 1989, lot 502
Collection Keith Klugman.

18b+6a

**1'500**

4210

- 4210** 1 d. brownish-red, an unused pair with ample to large margins all round in an almost chocolate shade, variety "Watermark Inverted" (reversed), large part og. A scarce pair. Cert. BPA (1999) Gi = £ 1'700+.
Provenance: Collection Dr. James Foght, Spink, London, 23 Sept 2004, lot 640
Collection Lord Vestey.

18ca

*

400

4211



4212



4213

- 4211** 1 d. brownish-red, a used example with generally large margins all round in a deep shade, cancelled by barred oval numeral "1" of Cape Town in black. Scarce Gi = £350.
Provenance: Collection Dr. James Foght, Spink, London, 23 Sept 2004, lot 652.
- 4212** 1 d. brownish-red, an unused example with good even margins all round in a deep chestnut shade, large part og. Scarce stamp Gi = £ 700.
- 4213** 1 d. brownish-red, a used example with good margins all round, neatly cancelled by unlined "CAPE TOWN / CAPE OF GOOD HOPE" circular datestamp in black. Exceptional and very scarce thus Gi = £ 350.
Provenance: Collection "Cawardine".

18c

100

18c

*

220

18c

250



Louise Boyd Dale



4214



Alfred F. Lichtenstein

Gibbons

Start price
in CHF

- 4214** 1 d. brownish-red, a used example block of four (Pos. IX 1 B/A - 2 A/B) in a fine fresh shade with large margins all round, showing the horizontal Die Inversion (A/B rather than the normal B/A on the second pair of the row) which affects the second pair from each of the ninth, tenth and eleventh rows of the sheet, lightly cancelled by two strikes of the CGH obliterator in black. An exceptional and scarce multiple $G_i = \text{£ } 1'400+$.

Provenance: Collection Louise Boyd Dale & Alfred F. Lichtenstein, Harmers, Washington DC, 28-29 Nov 1989, lot 431.

18c

田

500

4215



4216



Sir Maxwell Joseph

- 4215** 4 d. deep blue, an unused example (Pos. XIV 1 A), with good to very large margins, fine fresh colour, large part og. Scarce $G_i = \text{£ } 350$.

19

*

120

- 4216** 4 d. deep blue, an unused example (Pos. IV 1 B), with good to very large margins, showing clear re-entries on "U", "E" and "C" of "FOUR PENCE" and two dots in margin under "OO" of GOOD (Stevenson Ib), rich deep shade, part og. Scarce $G_i = \text{£ } 350+$.

Provenance: Collection Sir Maxwell Joseph, Sotheby's, London, 28-29 Oct 1982, lot 975.

19 var

*

150

4217



4218

- 4217** 4 d. deep blue, an unused pair (Pos. III 1 A/B), with good to large margins all round, of fine fresh colour, large part og. Scarce $G_i = \text{£ } 700+$.

19

*

200

- 4218** 4 d. deep blue, an unused block of four (Pos. XII 1 B - 2 A), sheet marginal at left with good to large margins all round, showing part of POST of POSTAGE watermark (possibly only twice on the sheet), of fresh deep colour, some minor horizontal gum bends but of delightful appearance, large part og. Signed A. Diena $G_i = \text{£ } 1'400+$.

Provenance: Collection "Besançon", Corinthila sale 238, Zurich, 12 June 2018, lot 4122.

19

田*

350



4219



4222

Gibbons

Start price
in CHF

- 4219** 4 d. deep blue, an unused block of eight (Pos. VI 3 A - 4B / VII 3 A - 4B), with good to very large margins, fine colour, slight oil spot in margin only at top and horizontal gum crease on lower block, otherwise fresh and fine, with large part og. Scarce multiple Gi = £ 2'800+.
Provenance: Collection "Maximus", Sotheby's, London, 7 Sept 1989, lot 466.

19 田*

850

4220

- 4220** 4 d. blue, an unused pair (Pos. IX 1 B/A), sheet marginal with good to large margins all round and showing the watermark lines, fresh and very fine, large part og. A most attractive pair Gi = £ 700+.

19a *

220

4221

- 4221** 4 d. blue, an unused block of six (Pos. III 5 A / III 7 (2) B), Second State, with large even margins all round and of fine fresh colour, the right hand pair showing the second state of the Dies with Pos. III 7 (2) A (upper stamp) with diagonal strokes running from "APE" of CAPE into the margin, the lower stamp with "NC" of PENCE joined and dot between "OO" of GOOD amongst other features - all only occur on the De La Rue printing; large part og, a superb and important multiple Gi = £ 2'100+.
Provenance: Collection Maurice Burrus, Robson Lowe, London, 27 Nov 1962, lot 159.

19a 田*

750

- 4222** 4 d. blue, an unused block of eight in a paler shade (Pos. V 1 A - 2 B / VI 1 A - 2 B), sheet marginal with large margins all round and showing the watermark lines, trace of ageing in margin only at base, otherwise fresh and very fine, large part og. A delightful multiple Gi = £ 2'800+.
Provenance: Collection Louise Boyd Dale & Alfred F. Lichtenstein, Harmers, Washington DC, 25-26 Nov 1989, lot 447.

19a 田*

1'000

Maurice Burrus



4223

Gibbons

Start price
in CHF

- 4223 4 d. blue, an unused block of eight (Pos. III 1 A - III 2 B / IV 1 A - IV 2 B), marginal from left of the sheet and showing "AGE" of POSTAGE in margin, with good to very large margins all round and of fine fresh colour, typical minor gum bends not detracting the delightful appearance, large part og. A most attractive and rare multiple Gi = £ 2'800+.

19a

田*

1'000



Type A showing Re-entry (Stevenson IIa) "mark in centre of "N" of PENCE diagonal"



4224



C. Emerson Huston

- 4224 4 d. blue, an unused block of eight (Pos. XIV 1 B - XIV 2 A / XV 1 A - 2 A) in a pale shade, from the lower left corner of the sheet with large margins all round and showing the re-entries on both the corner stamps from the second State: Type A showing Re-entry (Stevenson IIa) "mark in centre of "N" of PENCE diagonal" and Type B showing Re-entry (Stevenson IIb) "perpendicular line below right corner"; and clearly showing, in the sheet margin the so-called "Fifth Corner" at lower left. Fresh and very fine, the extraordinary Discovery Block, illustrated in D. Alan Stevenson "The Triangular Stamps of the Cape of Good Hope" on plate 7. The reverse of the multiple with Stevenson's pencil notations noting the re-entries and Dies being reversed "Die A being on top instead of on bottom as in the last state". Large part slightly dried og., a marvellous and important multiple for the specialist and the connoisseur Gi = £ 2'800++.

Provenance: Collection Stevenson; part of the reconstruction made by Commander F.W. Collins from stamps supplied by C. Emerson Huston, Harmers, London 26-28 June 1961, lot 531 Collection "Lady Hope", DF, Geneva, 19 Nov 2003, lot 20367.

19a var

田*

2'000



4225



R.A.G. Lee



4226

Gibbons

Start price
in CHF

- 4225** 4 d. blue, an unused block of twelve (Pos. VIII 7 A - VIII 8 B / X 7 B - X 8 A), sheet marginal from right of sheet showing the watermark lines and the "Die Shift Line" between the 8th and 9th horizontal rows on the plate and showing the reversal of the roller between the rows (Dies A/B on row VIII to B/A of row IX), good to huge margins, some minor gum creasing of no significance on large part og. A delightful multiple Gi = £ 4'200+.
- 4226** 4 d. blue, a used pair (Pos. VII 4 A/B), with good to large margins all round, neatly cancelled by barred oval numeral cancel "2" of Port Elizabeth in black. Most attractive and scarce thus Gi = £ 280+.

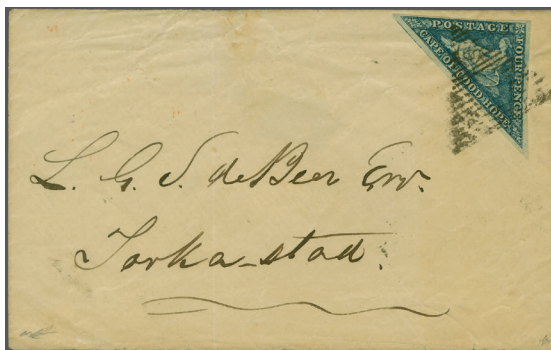
19a

田*

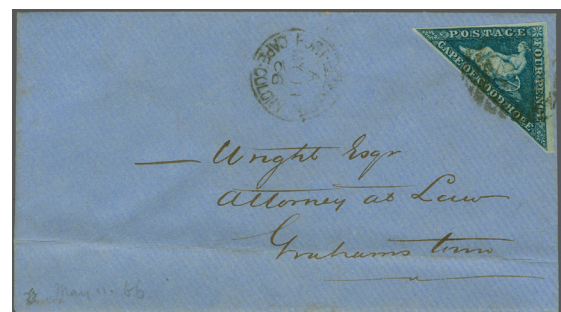
1'200

19a

120



4227



4228

- 4227** 4 d. blue, a single example (Pos. XIV 6 A), with good to large margins all round with portion of adjoining stamp at base, used on 1865 cover from Cradock to Tarkastad tied by CGH obliterator in black. Reverse with oval framed "CRADOCK" despatch datestamp (Oct 16) struck in red. Small flap fault and file fold well away from adhesive, an attractive cover.
- Note: The addressee, L.G.S. de Beer was the village of Tarkstad's first Postmaster, appointed on 2 August 1865 and serving until 31 August 1867.*
- Provenance: Collection Dr. Guy Dillaway.*
- 4228** 4 d. blue, a single example (Pos. XI 1 A), with good to large margins all round, used on 1866 single rate cover from Port Elizabeth to Grahamstown tied by barred oval numeral cancellation "2" in black, with PORT ELIZABETH / CAPE COLONY cds in black of despatch (May 11) and reverse with Grahamstown arrival cds (May 12). File fold well away from the fine adhesive, an attractive cover.
- Provenance: Collection Lousie Boyd Dale & Alfred F. Lichtenstein, Harmers, Washington DC, 28-29 Nov 1989, lot 494.*

19a

✉

220

19a

✉

250



4229



4230

Gibbons

Start price
in CHF

- 4229 4 d. blue, a single example (Pos. XII 5 A), with clear to large margins all round, used on 1865 single rate cover from Port Elizabeth to Graaff Reinet tied by both the triangular CGH obliterator and the barred oval numeral cancellation No. 2 of Port Elizabeth, with PORT ELIZABETH / CAPE COLONY cds in black (Sept 19) of despatch and oval framed "GRAAFF REINET" arrival datestamp (Sept 21) in red adjacent. An attractive and unusual cover.

19a

250

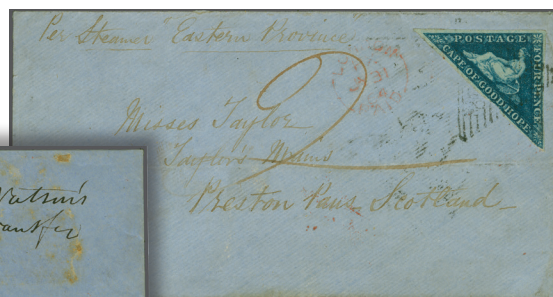
- 4230 4 d. blue, a single example (Pos. VII 1 B), with clear to large margins all round and showing portions of two adjoining stamps, used on 1864 cover to Lynn Regis, Norfolk endorsed "Per Steamer Eastern Province", tied by barred oval numeral cancel "1" of Cape Town in black with CAPE TOWN / CAPE COLONY despatch cds (Oct 24) at left. Reverse with "SHIP LETTER / LONDON" cds in red and Lynn arrival (Nov 29). Manuscript "2d." credit to Cape of Good Hope in red crayon. An extremely scarce cover - this being just the **2nd Return Voyage** of the Diamond Line Shipping Company.

19a

300



4232



4231

- 4231 4 d. blue, a single example (Pos. V 7 A), with good to large margins all round, used on 1864 cover to Preston Pans, Scotland endorsed "Per Steamer Eastern Province", tied by triangular CGH obliterator in black. Reverse with oval framed "SOMERSET EAST" despatch (June 18) in black, CAPE TOWN transit in red (June 19), and 'London / Paid' cds in red (July 31), Edinburgh cds and Preston Pans arrival (Aug 2). manuscript "2d." credit to Cape of Good Hope in red ink. An extremely rare cover - this being the **Maiden Return Voyage** of the Diamond Line Shipping Company.

Note: The Diamond Line Shipping Co. submitted a tender for the Cape Mail service in December of 1862. Whilst their bid of £ 9'000 per annum was cheaper than that of the Union Line Steam Shipping Co., it was turned down as the ships had yet to be constructed and a seven year contract was awarded to the Union Line. On 25 May 1864, the "Eastern Province" arrived in Algoa Bay after a journey of 32½ days, some 2½ days faster than a Union line vessel. As terms were not agreed with the Cape Legislative Assembly, Diamond Line Mail was carried at the private ship rate of 4d. per ½ ounce prepaid with the Cape credited 2d.

19a

400

- 4232 4 d. blue, two examples (Pos. V 4 B / V 3 B), with ample to large margins all round, and lower stamp with portion of adjoining adhesive, used on 1864 double rate cover from Port Elizabeth to Graaff Reinet tied by triangular CGH obliterator in black. Oval framed "GRAAFF REINET" arrival datestamp (May 5) in red at right and reverse with oval framed PORT ELIZABETH despatch in red (May 3). Some docketing including notation of receipt, file fold away from the adhesives but a rare double rate usage. It is interesting to note that the Dale-Lichtenstein collection possessed no De La Rue internal double rate cover.

19a

400



John H. Hall



4233



4234



4235

Gibbons

Start price
in CHF

- 4233** 4 d. steel-blue, a used example (Pos. IX 4 A), with good to large margins all round, lightly cancelled in black. A rare and elusive shade. Cert. RPSL (1966) Gi = £ 325.

Provenance: Commander F.W. Collins.

19c

140

- 4234** 4 d. blue, a used example (Pos. XII 4 A), with good to large margins all round, variety "Watermark Sideways" (reversed), cancelled by barred oval numeral cancel "1" of Cape Town in black. Scarce Gi = £ 400.

19d

160

- 4235** 4 d. slate-blue, a used example (Pos. IX 8 B), with large margins all round, lightly cancelled by barred oval numeral obliterator in black. A rare and elusive shade Gi = £ 500.

Provenance: Collection John H. Hall Jnr.

19d

180

4236



4237



4238

- 4236** De La Rue 6 d. bright mauve, an unused example of fine fresh colour and large part og., small black surface mark in margin only at left Gi = £ 450.

20

*

100

- 4237** 6 d. bright mauve, an unused example in a deep shade, large margins all round, light bend, superb large part og. Scarce Gi = £ 450.

20

*

150

- 4238** 6 d. bright mauve, an unused example with ample to good margins all round, showing Re-entry (Stevenson I, second state) showing stroke in the right ornament and line across top of "NCE" in PENCE, fresh and fine, large part og. Gi = £ 450+.

Provenance: Collection Besançon, Corinthila sale 231, Zurich, 30 Nov 2018, lot 6122.

20 var

*

220

4239



4240

- 4239** 6 d. bright mauve, an unused pair in a pastel shade, slight natural paper flaw in one margin, large margins all round, superb large part og. Scarce Gi = £ 900+.

20

*

220

- 4240** 6 d. bright mauve, an unused block of four with large even margins all round, of fine fresh colour, superb large part og. A most attractive pair. Cert. RPSL (1945) Gi = £ 900+.

20

*

250



4241

- 4241** 6 d. bright mauve, an unused block of four in triangular format, large even margins all round, fresh colour and very fine, large part og. A delightful multiple Gi = £ 1'800+.

Gibbons

Start price
in CHF

20

田*

600

4242



4243



4244

- 4242** 6 d. bright mauve, a used example with large margins all round, lightly cancelled by barred oval numeral cancel in black Gi = £ 550.

Provenance: Collection "Maximus", Sotheby's, London, 7 Sept 1989, lot 526.

20

180

- 4243** 6 d. bright mauve, a used example with good to large margins all round, of fine colour, showing Re-entry (Stevenson III, Die A) showing the curve through the top of letters in PENCE, and re-entry lines in "P", "O" and "G" of POSTAGE; fresh and fine leaving the re-entries clear. Cert. BPA (1989) Gi = £ 500+.

Provenance: Collection Besançon, Corinthila sale 238, Zurich, 12 June 2019, lot 4136.

20 var

200

- 4244** 6 d. bright mauve, a used example, ample to huge margins on two sides, on small piece cancelled by the first oval "REGISTERED / CAPE TOWN CAPE OF GOOD HOPE" framed datestamp (May 13) in black and by part cds in red at lower right corner. Rare thus. Cert. RPSL Gi = £ 550+.

Provenance: Collection Louise Boyd Dale & Alfred F. Lichtenstein, Harpers, Washington DC, 25-26 Nov 1989, lot 472.

20

△

200

4245

- 4245** 6 d. bright mauve, a used pair with close to large margins all round, showing sheet watermark marginal lines at top, slight ironed crease, lightly cancelled by triangular CGH obliterator in black, a most attractive multiple Gi = £ 1'100+.

Provenance: Collection "Bonaventure", Christie's, London, 9 Sept 1993, lot 397.

20

250



4246



4247



John H. Hall

Gibbons

Start price
in CHF

- 4246** 1 s. bright emerald-green, an unused pair with good to large margins all round, sharp impression for this stamp, fresh and fine, large part og. Rare Gi = £ 1'300+.

Note: For the 1 s. value, 158 sheets (37'920 stamps) were printed in one delivery by De La Rue, arriving via the "R.M.S. Briton" at Cape Town on 14 March 1863. The numbers printed makes them scarcer than the 4d. "Woodblock" provisionals by a factor of two thirds.

21 * **400**

- 4247** 1 s. bright emerald-green, an unused sheet marginal pair with large margins all round, in a somewhat cloudy impression, sheet margin with the watermark lines, slightest age spot on reverse, large part og. A most attractive multiple Gi = £ 1'300+.

Provenance: Collection John H. Hall Jnr.

21 * **500**

4248



4249

- 4248** 1 s. bright emerald-green, an unused block of four, sheet marginal and showing the watermark lines clearly, large margins all round and of fine fresh colour, two natural paper spots not impacting the fine appearance, large part og. An extremely rare stamp in a multiple Gi = £ 2'600+.

21 田* **750**

- 4249** 1 s. bright emerald-green, a used example in a rich vivid shade, large margins all round and showing portion of adjoining stamp at base, champfered corner at right, lightly cancelled in black. A scarce stamp used Gi = £ 750.

21 **250**

4250

- 4250** 1 s. bright emerald-green, a used pair with enormous margins all round, lightly tied to piece by triangular CGH obliterator in black. A marvellous pair in the finest possible quality, an extremely rare stamp in a used multiple - this being exceptional. Cert. BPA (1993) Gi = £ 1'500+.

*Provenance: Collection Ms. Eliza Blum
Collection Goldblatt.*

21 △ **750**



Main Street in Port Elizabeth



T. Kuyas



4251

Gibbons

Start price
in CHF

4251

1 s. bright emerald-green, a used example with huge margin at left and showing large portion of the adjoining stamp, right hand margin just shaved and margin at base otherwise very fine, on 1863 cover from Port Elizabeth to Stirling, Scotland endorsed "*per R.M. Steamer*", tied by CGH obliterator in black and carried on the Union Steam Ship Company "*R.M.S Roman*". Reverse with oval framed "*PORT ELIZABETH*" despatch datestamp (July 15) in red, Cape Town transit cds in red (July 19) and Stirling arrival cds (Aug 26) in black; obverse with Circular "*PAID / DEVONPORT / CAPE PACKET*" in red (Aug 25) and "*11d.*" in manuscript British credit. A most attractive and rare cover.

Provenance: Collection T. Kuyas, SG, London, 1 July 1966

Collection "*Bonaventure*", Christie's, London, 9 Sept 1993, lot 411

Collection Dr. Guy Dillaway.

21



1'500



R.M.S. 'Roman'



4252

Gibbons

Start price
in CHF

- 4252** 1 s. bright emerald-green, a used example with large margins on two sides and showing portion of adjoining stamp at left, imperceptibly shaved at base, used on 1863 small mourning envelope to London endorsed "*per First Mail*", tied by CGH obliterator in black. Reverse with oval framed "*WORCESTER*" despatch datestamp (June 19) in black, Cape Town transit cds in red and obverse with "*London / Paid*" cds of receipt (July 12) in red. Carried on the Union Steam Ship Company "*R.M.S. Roman*" at the new 1 shilling rate for under ½ an ounce introduced on 1 April 1863, showing the British share of "*11d.*" in red crayon manuscript (previously 5 d. ou of 6 d. charge). A most attractive and rare cover. Cert. RPSL (1969).

Provenance: Collection Arno Spangenthal, Rapp, Wil, 25-27 Nov 1997, lot 1688.

21

**1'500**

4253

- 4253** 1863/64: 1 s. pale emerald-green, an unused example, with large to huge margins all round, tiny spot in lower margin, large part og. An extremely scarce stamp Gi = £ 1'400.

21a

*

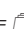
400

Collections

- 4254** 1853/63: **Grahamstown Roller Cancellations**, the album page with 1853 4 d. deep blue on blued paper (Pos. III 2 B), 1 d. brown-red on slightly blued single and a pair, 4 d. blue on slightly blued paper (Pos. IV 6 B), 1855/63 4 d. blue on white paper (Pos. IX 2 A), very fine 6 d. rose-lilac and 1 s. bright yellow-green, all with good to large margins and clearly showing the scarce Roller Cancellations struck in black. Some small imperfections but a charming page Gi = £ 2'400+.

Provenance: Collection Johnson and Dr. Guy Dillaway.

2 +3a +4 +6

(Photo =  www)

+7 +8

600

